



Full wwPDB X-ray Structure Validation Report ⓘ

Jan 3, 2017 – 08:59 PM EST

PDB ID : 5T2Z
Title : Crystal Structure of Multi-drug Resistant HIV-1 Protease PR-S17 in Complex with Darunavir
Authors : Agniswamy, J.; Weber, I.T.
Deposited on : 2016-08-24
Resolution : 1.50 Å(reported)

This is a Full wwPDB X-ray Structure Validation Report for a publicly released PDB entry.

We welcome your comments at validation@mail.wwpdb.org

A user guide is available at

<http://wwpdb.org/validation/2016/XrayValidationReportHelp>

with specific help available everywhere you see the ⓘ symbol.

The following versions of software and data (see [references ⓘ](#)) were used in the production of this report:

MolProbity : 4.02b-467
Mogul : 1.7.1 (RC1), CSD as537be (2016)
Xtriage (Phenix) : 1.9-1692
EDS : rb-20028442
Percentile statistics : 20151230.v01 (using entries in the PDB archive December 30th 2015)
Refmac : 5.8.0135
CCP4 : 6.5.0
Ideal geometry (proteins) : Engh & Huber (2001)
Ideal geometry (DNA, RNA) : Parkinson et al. (1996)
Validation Pipeline (wwPDB-VP) : rb-20028442

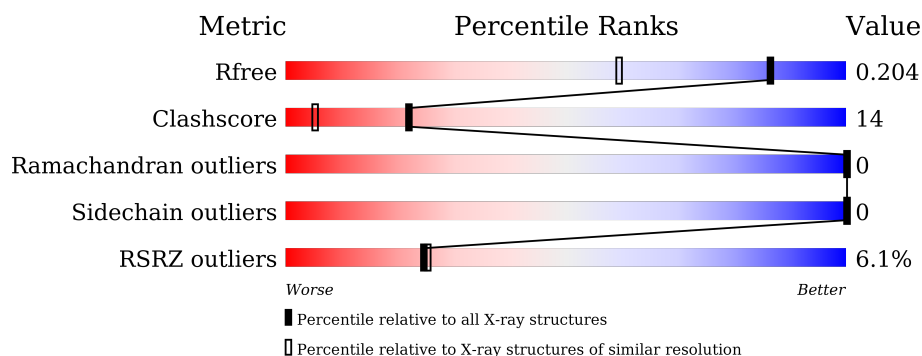
1 Overall quality at a glance

The following experimental techniques were used to determine the structure:

X-RAY DIFFRACTION

The reported resolution of this entry is 1.50 Å.

Percentile scores (ranging between 0-100) for global validation metrics of the entry are shown in the following graphic. The table shows the number of entries on which the scores are based.



Metric	Whole archive (#Entries)	Similar resolution (#Entries, resolution range(Å))
R_{free}	91344	2072 (1.50-1.50)
Clashscore	102246	2274 (1.50-1.50)
Ramachandran outliers	100387	2218 (1.50-1.50)
Sidechain outliers	100360	2216 (1.50-1.50)
RSRZ outliers	91569	2075 (1.50-1.50)

The table below summarises the geometric issues observed across the polymeric chains and their fit to the electron density. The red, orange, yellow and green segments on the lower bar indicate the fraction of residues that contain outliers for ≥ 3 , 2, 1 and 0 types of geometric quality criteria. A grey segment represents the fraction of residues that are not modelled. The numeric value for each fraction is indicated below the corresponding segment, with a dot representing fractions $\leq 5\%$. The upper red bar (where present) indicates the fraction of residues that have poor fit to the electron density. The numeric value is given above the bar.

Mol	Chain	Length	Quality of chain
1	A	99	 6% 73% 24% •
1	B	99	 6% 79% 19% •

2 Entry composition

There are 3 unique types of molecules in this entry. The entry contains 1870 atoms, of which 0 are hydrogens and 0 are deuteriums.

In the tables below, the ZeroOcc column contains the number of atoms modelled with zero occupancy, the AltConf column contains the number of residues with at least one atom in alternate conformation and the Trace column contains the number of residues modelled with at most 2 atoms.

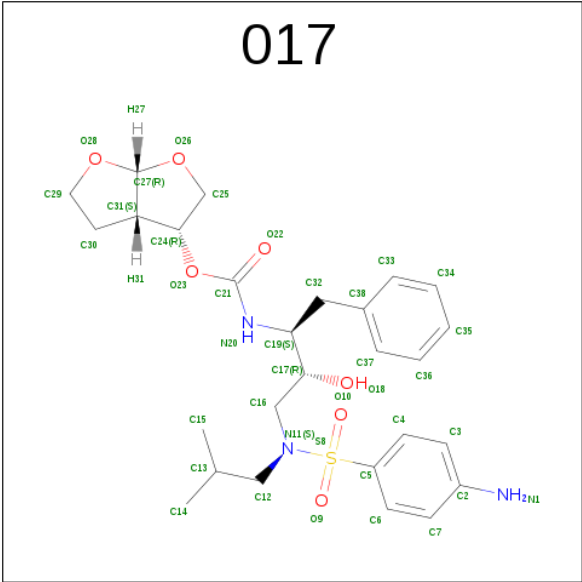
- Molecule 1 is a protein called Protease.

Mol	Chain	Residues	Atoms					ZeroOcc	AltConf	Trace
1	A	99	Total	C	N	O	S	0	15	0
			876	565	153	157	1			
1	B	99	Total	C	N	O	S	0	8	0
			828	536	142	148	2			

There are 14 discrepancies between the modelled and reference sequences:

Chain	Residue	Modelled	Actual	Comment	Reference
A	46	LEU	MET	engineered mutation	UNP I7BFC3
A	48	VAL	GLY	engineered mutation	UNP I7BFC3
A	67	ALA	CYS	engineered mutation	UNP I7BFC3
A	77	ILE	VAL	engineered mutation	UNP I7BFC3
A	82	SER	ALA	engineered mutation	UNP I7BFC3
A	93	LEU	ILE	engineered mutation	UNP I7BFC3
A	95	ALA	CYS	engineered mutation	UNP I7BFC3
B	46	LEU	MET	engineered mutation	UNP I7BFC3
B	48	VAL	GLY	engineered mutation	UNP I7BFC3
B	67	ALA	CYS	engineered mutation	UNP I7BFC3
B	77	ILE	VAL	engineered mutation	UNP I7BFC3
B	82	SER	ALA	engineered mutation	UNP I7BFC3
B	93	LEU	ILE	engineered mutation	UNP I7BFC3
B	95	ALA	CYS	engineered mutation	UNP I7BFC3

- Molecule 2 is (3R,3AS,6AR)-HEXAHYDROFURO[2,3-B]FURAN-3-YL(1S,2R)-3-[[[4-AMINOPHENYL)SULFONYL](ISOBUTYL)AMINO]-1-BENZYL-2-HYDROXYPROPYLCARBAMATE (three-letter code: 017) (formula: C₂₇H₃₇N₃O₇S).



Mol	Chain	Residues	Atoms					ZeroOcc	AltConf
2	B	1	Total	C	N	O	S	0	1
			76	54	6	14	2		

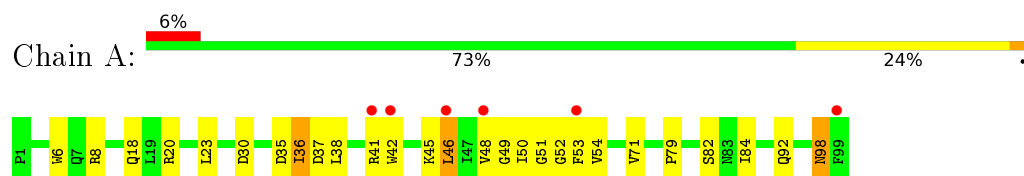
- Molecule 3 is water.

Mol	Chain	Residues	Atoms		ZeroOcc	AltConf
3	A	45	Total	O	0	0
			45	45		
3	B	45	Total	O	0	0
			45	45		

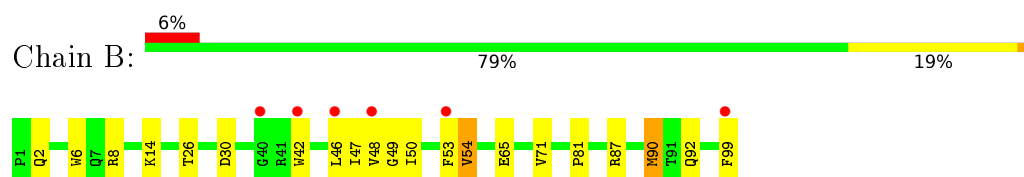
3 Residue-property plots [i](#)

These plots are drawn for all protein, RNA and DNA chains in the entry. The first graphic for a chain summarises the proportions of errors displayed in the second graphic. The second graphic shows the sequence view annotated by issues in geometry and electron density. Residues are color-coded according to the number of geometric quality criteria for which they contain at least one outlier: green = 0, yellow = 1, orange = 2 and red = 3 or more. A red dot above a residue indicates a poor fit to the electron density ($\text{RSRZ} > 2$). Stretches of 2 or more consecutive residues without any outlier are shown as a green connector. Residues present in the sample, but not in the model, are shown in grey.

• Molecule 1: Protease



• Molecule 1: Protease



4 Data and refinement statistics

Property	Value	Source
Space group	P 61	Depositor
Cell constants a, b, c, α , β , γ	62.85Å 62.85Å 82.96Å 90.00° 90.00° 120.00°	Depositor
Resolution (Å)	32.99 – 1.50 32.99 – 1.50	Depositor EDS
% Data completeness (in resolution range)	99.0 (32.99-1.50) 99.0 (32.99-1.50)	Depositor EDS
R_{merge}	0.06	Depositor
R_{sym}	(Not available)	Depositor
$\langle I/\sigma(I) \rangle$ ¹	3.03 (at 1.50Å)	Xtriage
Refinement program	REFMAC 5.8.0123	Depositor
R, R_{free}	0.142 , 0.195 0.152 , 0.204	Depositor DCC
R_{free} test set	1486 reflections (5.32%)	DCC
Wilson B-factor (Å ²)	24.3	Xtriage
Anisotropy	0.089	Xtriage
Bulk solvent k_{sol} (e/Å ³), B_{sol} (Å ²)	0.37 , 35.9	EDS
L-test for twinning ²	$\langle L \rangle = 0.51$, $\langle L^2 \rangle = 0.34$	Xtriage
Estimated twinning fraction	0.487 for h,-h-k,-l	Xtriage
F_o, F_c correlation	0.98	EDS
Total number of atoms	1870	wwPDB-VP
Average B, all atoms (Å ²)	35.0	wwPDB-VP

Xtriage's analysis on translational NCS is as follows: *The largest off-origin peak in the Patterson function is 6.19% of the height of the origin peak. No significant pseudotranslation is detected.*

¹Intensities estimated from amplitudes.

²Theoretical values of $\langle |L| \rangle$, $\langle L^2 \rangle$ for acentric reflections are 0.5, 0.333 respectively for untwinned datasets, and 0.375, 0.2 for perfectly twinned datasets.

5 Model quality [i](#)

5.1 Standard geometry [i](#)

Bond lengths and bond angles in the following residue types are not validated in this section:
017

The Z score for a bond length (or angle) is the number of standard deviations the observed value is removed from the expected value. A bond length (or angle) with $|Z| > 5$ is considered an outlier worth inspection. RMSZ is the root-mean-square of all Z scores of the bond lengths (or angles).

Mol	Chain	Bond lengths		Bond angles	
		RMSZ	$\# Z > 5$	RMSZ	$\# Z > 5$
1	A	1.44	3/891 (0.3%)	1.33	8/1207 (0.7%)
1	B	1.51	6/843 (0.7%)	1.40	7/1144 (0.6%)
All	All	1.47	9/1734 (0.5%)	1.36	15/2351 (0.6%)

All (9) bond length outliers are listed below:

Mol	Chain	Res	Type	Atoms	Z	Observed(Å)	Ideal(Å)
1	B	65	GLU	CD-OE2	9.28	1.35	1.25
1	A	42	TRP	CG-CD1	8.31	1.48	1.36
1	A	98	ASN	CG-ND2	-6.40	1.16	1.32
1	B	42	TRP	CG-CD1	5.82	1.45	1.36
1	A	6	TRP	CZ3-CH2	-5.55	1.31	1.40
1	B	47	ILE	C-N	-5.25	1.22	1.34
1	B	99	PHE	CG-CD2	5.25	1.46	1.38
1	B	6	TRP	CZ3-CH2	-5.19	1.31	1.40
1	B	6	TRP	CG-CD1	-5.00	1.29	1.36

All (15) bond angle outliers are listed below:

Mol	Chain	Res	Type	Atoms	Z	Observed(°)	Ideal(°)
1	B	90[A]	MET	CG-SD-CE	12.40	120.04	100.20
1	B	90[B]	MET	CG-SD-CE	12.40	120.04	100.20
1	A	30	ASP	CB-CG-OD1	-7.75	111.33	118.30
1	B	14	LYS	CD-CE-NZ	7.04	127.89	111.70
1	A	46	LEU	CB-CG-CD1	6.57	122.17	111.00
1	A	8	ARG	NE-CZ-NH2	-5.74	117.43	120.30
1	B	8	ARG	NE-CZ-NH2	-5.43	117.58	120.30
1	B	54	VAL	CB-CA-C	-5.42	101.11	111.40
1	A	37	ASP	CB-CG-OD1	-5.32	113.51	118.30
1	B	30	ASP	CB-CG-OD1	-5.31	113.52	118.30

Continued on next page...

Continued from previous page...

Mol	Chain	Res	Type	Atoms	Z	Observed(°)	Ideal(°)
1	A	38	LEU	CB-CG-CD1	-5.16	102.23	111.00
1	B	87	ARG	NE-CZ-NH2	-5.14	117.73	120.30
1	A	35	ASP	CB-CG-OD2	5.13	122.91	118.30
1	A	36	ILE	CB-CA-C	-5.06	101.48	111.60
1	A	45	LYS	O-C-N	-5.01	114.68	122.70

There are no chirality outliers.

There are no planarity outliers.

5.2 Too-close contacts ⓘ

In the following table, the Non-H and H(model) columns list the number of non-hydrogen atoms and hydrogen atoms in the chain respectively. The H(added) column lists the number of hydrogen atoms added and optimized by MolProbity. The Clashes column lists the number of clashes within the asymmetric unit, whereas Symm-Clashes lists symmetry related clashes.

Mol	Chain	Non-H	H(model)	H(added)	Clashes	Symm-Clashes
1	A	876	0	919	39	0
1	B	828	0	869	27	0
2	B	76	0	74	9	0
3	A	45	0	0	1	0
3	B	45	0	0	7	0
All	All	1870	0	1862	51	0

The all-atom clashscore is defined as the number of clashes found per 1000 atoms (including hydrogen atoms). The all-atom clashscore for this structure is 14.

All (51) close contacts within the same asymmetric unit are listed below, sorted by their clash magnitude.

Atom-1	Atom-2	Interatomic distance (Å)	Clash overlap (Å)
1:A:18[A]:GLN:OE1	3:A:101:HOH:O	1.66	1.13
2:B:201[B]:017:O10	3:B:303:HOH:O	1.77	1.01
2:B:201[A]:017:O10	3:B:304:HOH:O	1.82	0.97
1:A:49[A]:GLY:HA3	1:B:50:ILE:HG22	1.53	0.90
1:A:50[A]:ILE:HG12	3:B:303:HOH:O	1.76	0.86
2:B:201[A]:017:S8	3:B:304:HOH:O	2.35	0.85
2:B:201[B]:017:S8	3:B:303:HOH:O	2.37	0.81
1:A:20:ARG:HG3	1:A:36:ILE:HD11	1.64	0.79
1:A:50[B]:ILE:HG23	1:B:54:VAL:HG21	1.63	0.78
1:A:50[B]:ILE:HG23	1:B:54:VAL:CG2	2.15	0.76

Continued on next page...

Continued from previous page...

Atom-1	Atom-2	Interatomic distance (Å)	Clash overlap (Å)
1:A:51[B]:GLY:HA2	1:B:53[B]:PHE:O	1.86	0.74
1:A:98:ASN:HD21	1:B:2:GLN:HG3	1.59	0.68
1:A:98:ASN:ND2	1:B:2:GLN:HG3	2.11	0.66
1:A:53[B]:PHE:O	1:A:53[B]:PHE:HD1	1.79	0.65
1:A:49[A]:GLY:HA3	1:B:50:ILE:CG2	2.29	0.62
1:A:49[B]:GLY:HA2	2:B:201[B]:017:H36	1.82	0.62
1:B:48:VAL:HG22	1:B:49:GLY:H	1.66	0.61
1:A:53[B]:PHE:CD1	1:A:53[B]:PHE:O	2.54	0.60
1:B:81:PRO:HG2	2:B:201[B]:017:C36	2.31	0.60
1:A:53[B]:PHE:CD1	1:A:53[B]:PHE:C	2.75	0.60
1:A:53[B]:PHE:HD1	1:A:53[B]:PHE:C	2.08	0.57
1:A:50[A]:ILE:HD11	1:B:48:VAL:O	2.04	0.56
1:A:46:LEU:HD11	1:A:53[A]:PHE:HB3	1.87	0.56
1:B:46:LEU:HB3	1:B:53[B]:PHE:CD1	2.41	0.56
1:A:48[A]:VAL:HG23	1:A:52[A]:GLY:O	2.06	0.56
1:A:49[B]:GLY:HA3	1:B:50:ILE:HG22	1.88	0.54
1:B:81:PRO:HG2	2:B:201[B]:017:C35	2.38	0.54
1:A:50[A]:ILE:HD11	1:B:49:GLY:HA3	1.90	0.52
1:A:50[B]:ILE:HG23	1:B:54:VAL:HG23	1.93	0.50
1:A:50[A]:ILE:CD1	1:B:49:GLY:HA3	2.43	0.48
1:A:50[A]:ILE:HD11	1:B:49:GLY:CA	2.43	0.48
1:A:49[B]:GLY:HA2	2:B:201[B]:017:C36	2.46	0.46
1:B:26:THR:HA	1:B:90[B]:MET:HE1	1.97	0.46
1:B:50:ILE:HB	3:B:304:HOH:O	2.14	0.46
1:A:23[A]:LEU:HD23	1:A:84[A]:ILE:CD1	2.46	0.46
1:A:50[A]:ILE:HG13	1:B:49:GLY:HA3	1.98	0.46
1:A:50[A]:ILE:CG1	1:B:49:GLY:HA3	2.46	0.45
1:A:54:VAL:HG21	1:A:79:PRO:O	2.16	0.45
1:A:82[A]:SER:O	1:A:84[A]:ILE:HG12	2.16	0.45
1:A:50[A]:ILE:HA	1:B:81:PRO:HD2	1.99	0.44
1:A:54:VAL:HG23	1:A:79:PRO:HG2	2.00	0.44
1:A:50[B]:ILE:CG2	1:B:54:VAL:HG23	2.49	0.43
1:A:50[B]:ILE:HD13	1:A:50[B]:ILE:HG21	1.72	0.43
1:A:71:VAL:HB	1:A:92[B]:GLN:OE1	2.19	0.43
1:A:98:ASN:HD21	1:B:2:GLN:CG	2.28	0.42
1:A:49[A]:GLY:O	1:A:50[A]:ILE:C	2.57	0.42
1:A:51[B]:GLY:CA	1:B:53[B]:PHE:O	2.62	0.42
1:B:81:PRO:CG	2:B:201[B]:017:H36	2.49	0.42
1:A:41[B]:ARG:HD2	1:A:41[B]:ARG:HA	1.22	0.40
1:B:71:VAL:HB	1:B:92[B]:GLN:OE1	2.20	0.40
1:A:50[B]:ILE:HB	3:B:303:HOH:O	2.21	0.40

There are no symmetry-related clashes.

5.3 Torsion angles

5.3.1 Protein backbone

In the following table, the Percentiles column shows the percent Ramachandran outliers of the chain as a percentile score with respect to all X-ray entries followed by that with respect to entries of similar resolution.

The Analysed column shows the number of residues for which the backbone conformation was analysed, and the total number of residues.

Mol	Chain	Analysed	Favoured	Allowed	Outliers	Percentiles	
1	A	112/99 (113%)	111 (99%)	1 (1%)	0	100	100
1	B	105/99 (106%)	103 (98%)	2 (2%)	0	100	100
All	All	217/198 (110%)	214 (99%)	3 (1%)	0	100	100

There are no Ramachandran outliers to report.

5.3.2 Protein sidechains

In the following table, the Percentiles column shows the percent sidechain outliers of the chain as a percentile score with respect to all X-ray entries followed by that with respect to entries of similar resolution.

The Analysed column shows the number of residues for which the sidechain conformation was analysed, and the total number of residues.

Mol	Chain	Analysed	Rotameric	Outliers	Percentiles	
1	A	95/83 (114%)	95 (100%)	0	100	100
1	B	91/83 (110%)	91 (100%)	0	100	100
All	All	186/166 (112%)	186 (100%)	0	100	100

There are no protein residues with a non-rotameric sidechain to report.

Some sidechains can be flipped to improve hydrogen bonding and reduce clashes. All (4) such sidechains are listed below:

Mol	Chain	Res	Type
1	A	2	GLN
1	A	98	ASN
1	B	2	GLN

Continued on next page...

Continued from previous page...

Mol	Chain	Res	Type
1	B	98	ASN

5.3.3 RNA [i](#)

There are no RNA molecules in this entry.

5.4 Non-standard residues in protein, DNA, RNA chains [i](#)

There are no non-standard protein/DNA/RNA residues in this entry.

5.5 Carbohydrates [i](#)

There are no carbohydrates in this entry.

5.6 Ligand geometry [i](#)

2 ligands are modelled in this entry.

In the following table, the Counts columns list the number of bonds (or angles) for which Mogul statistics could be retrieved, the number of bonds (or angles) that are observed in the model and the number of bonds (or angles) that are defined in the chemical component dictionary. The Link column lists molecule types, if any, to which the group is linked. The Z score for a bond length (or angle) is the number of standard deviations the observed value is removed from the expected value. A bond length (or angle) with $|Z| > 2$ is considered an outlier worth inspection. RMSZ is the root-mean-square of all Z scores of the bond lengths (or angles).

Mol	Type	Chain	Res	Link	Bond lengths			Bond angles		
					Counts	RMSZ	$\# Z > 2$	Counts	RMSZ	$\# Z > 2$
2	017	B	201[A]	-	41,41,41	1.75	5 (12%)	52,58,58	1.69	11 (21%)
2	017	B	201[B]	-	41,41,41	2.03	7 (17%)	52,58,58	1.69	11 (21%)

In the following table, the Chirals column lists the number of chiral outliers, the number of chiral centers analysed, the number of these observed in the model and the number defined in the chemical component dictionary. Similar counts are reported in the Torsion and Rings columns. '-' means no outliers of that kind were identified.

Mol	Type	Chain	Res	Link	Chirals	Torsions	Rings
2	017	B	201[A]	-	-	0/36/55/55	0/4/4/4
2	017	B	201[B]	-	-	0/36/55/55	0/4/4/4

All (12) bond length outliers are listed below:

Mol	Chain	Res	Type	Atoms	Z	Observed(Å)	Ideal(Å)
2	B	201[B]	017	C5-S8	-8.80	1.63	1.76
2	B	201[A]	017	C5-S8	-8.08	1.64	1.76
2	B	201[B]	017	S8-N11	-3.73	1.58	1.63
2	B	201[B]	017	O10-S8	-2.96	1.39	1.43
2	B	201[A]	017	S8-N11	-2.89	1.59	1.63
2	B	201[B]	017	O28-C27	2.01	1.45	1.41
2	B	201[A]	017	C35-C34	2.06	1.43	1.38
2	B	201[B]	017	O23-C21	2.61	1.39	1.35
2	B	201[B]	017	C35-C34	2.87	1.45	1.38
2	B	201[A]	017	O23-C21	3.02	1.40	1.35
2	B	201[A]	017	O26-C27	3.97	1.48	1.41
2	B	201[B]	017	O26-C27	4.41	1.49	1.41

All (22) bond angle outliers are listed below:

Mol	Chain	Res	Type	Atoms	Z	Observed(°)	Ideal(°)
2	B	201[A]	017	C38-C32-C19	-5.35	104.83	113.40
2	B	201[B]	017	C38-C32-C19	-5.09	105.24	113.40
2	B	201[A]	017	C32-C19-N20	-3.30	106.52	110.17
2	B	201[A]	017	O10-S8-N11	-3.18	103.55	106.69
2	B	201[B]	017	C17-C19-N20	-2.95	105.14	109.74
2	B	201[B]	017	O23-C21-O22	-2.94	120.14	124.54
2	B	201[A]	017	O23-C24-C25	-2.72	102.22	108.73
2	B	201[A]	017	C17-C19-N20	-2.69	105.54	109.74
2	B	201[A]	017	C5-S8-N11	-2.67	103.97	107.31
2	B	201[B]	017	C15-C13-C12	-2.39	100.95	111.03
2	B	201[B]	017	O28-C27-O26	-2.34	106.26	110.67
2	B	201[B]	017	C5-S8-N11	-2.31	104.42	107.31
2	B	201[B]	017	O23-C24-C25	-2.23	103.37	108.73
2	B	201[B]	017	C29-C30-C31	-2.21	100.37	103.51
2	B	201[B]	017	C3-C2-N1	-2.20	116.36	120.88
2	B	201[A]	017	O23-C24-C31	2.04	115.74	108.77
2	B	201[A]	017	C7-C2-C3	2.05	121.65	118.21
2	B	201[A]	017	C3-C4-C5	2.18	121.81	119.49
2	B	201[A]	017	O9-S8-N11	2.53	109.18	106.69
2	B	201[A]	017	C30-C31-C27	3.20	105.98	102.15
2	B	201[B]	017	C30-C31-C27	3.39	106.20	102.15
2	B	201[B]	017	O9-S8-N11	5.19	111.80	106.69

There are no chirality outliers.

There are no torsion outliers.

There are no ring outliers.

2 monomers are involved in 9 short contacts:

Mol	Chain	Res	Type	Clashes	Symm-Clashes
2	B	201[A]	017	2	0
2	B	201[B]	017	7	0

5.7 Other polymers [i](#)

There are no such residues in this entry.

5.8 Polymer linkage issues [i](#)

There are no chain breaks in this entry.

6 Fit of model and data [i](#)

6.1 Protein, DNA and RNA chains [i](#)

In the following table, the column labelled ‘#RSRZ> 2’ contains the number (and percentage) of RSRZ outliers, followed by percent RSRZ outliers for the chain as percentile scores relative to all X-ray entries and entries of similar resolution. The OWAB column contains the minimum, median, 95th percentile and maximum values of the occupancy-weighted average B-factor per residue. The column labelled ‘Q< 0.9’ lists the number of (and percentage) of residues with an average occupancy less than 0.9.

Mol	Chain	Analysed	<RSRZ>	#RSRZ>2	OWAB(Å ²)	Q<0.9
1	A	99/99 (100%)	0.01	6 (6%) 25 25	18, 31, 53, 74	0
1	B	99/99 (100%)	-0.01	6 (6%) 25 25	18, 31, 60, 79	0
All	All	198/198 (100%)	0.00	12 (6%) 25 25	18, 31, 59, 79	0

All (12) RSRZ outliers are listed below:

Mol	Chain	Res	Type	RSRZ
1	A	53[A]	PHE	2.8
1	B	48	VAL	2.8
1	A	99	PHE	2.8
1	B	53[A]	PHE	2.5
1	B	42	TRP	2.3
1	B	99	PHE	2.3
1	A	46	LEU	2.3
1	A	48[A]	VAL	2.3
1	B	40	GLY	2.2
1	A	41[A]	ARG	2.2
1	B	46	LEU	2.1
1	A	42	TRP	2.0

6.2 Non-standard residues in protein, DNA, RNA chains [i](#)

There are no non-standard protein/DNA/RNA residues in this entry.

6.3 Carbohydrates [i](#)

There are no carbohydrates in this entry.

6.4 Ligands [i](#)

In the following table, the Atoms column lists the number of modelled atoms in the group and the number defined in the chemical component dictionary. LLDF column lists the quality of electron density of the group with respect to its neighbouring residues in protein, DNA or RNA chains. The B-factors column lists the minimum, median, 95th percentile and maximum values of B factors of atoms in the group. The column labelled 'Q< 0.9' lists the number of atoms with occupancy less than 0.9.

Mol	Type	Chain	Res	Atoms	RSCC	RSR	LLDF	B-factors(Å ²)	Q<0.9
2	017	B	201[A]	38/38	0.98	0.08	-0.29	20,23,29,30	38
2	017	B	201[B]	38/38	0.98	0.08	-0.31	20,23,28,31	38

6.5 Other polymers [i](#)

There are no such residues in this entry.