



Full wwPDB X-ray Structure Validation Report ⓘ

Oct 18, 2016 – 12:56 AM EDT

PDB ID : 5T4H
Title : Human DPP4 in complex with ligand 34n
Authors : Scapin, G.
Deposited on : 2016-08-29
Resolution : 2.61 Å(reported)

This is a Full wwPDB X-ray Structure Validation Report for a publicly released PDB entry.

We welcome your comments at validation@mail.wwpdb.org

A user guide is available at

<http://wwpdb.org/validation/2016/XrayValidationReportHelp>

with specific help available everywhere you see the ⓘ symbol.

The following versions of software and data (see [references ⓘ](#)) were used in the production of this report:

MolProbity : 4.02b-467
Mogul : 1.7.1 (RC1), CSD as537be (2016)
Xtriage (Phenix) : 1.9-1692
EDS : rb-20027939
Percentile statistics : 20151230.v01 (using entries in the PDB archive December 30th 2015)
Refmac : 5.8.0135
CCP4 : 6.5.0
Ideal geometry (proteins) : Engh & Huber (2001)
Ideal geometry (DNA, RNA) : Parkinson et al. (1996)
Validation Pipeline (wwPDB-VP) : rb-20027939

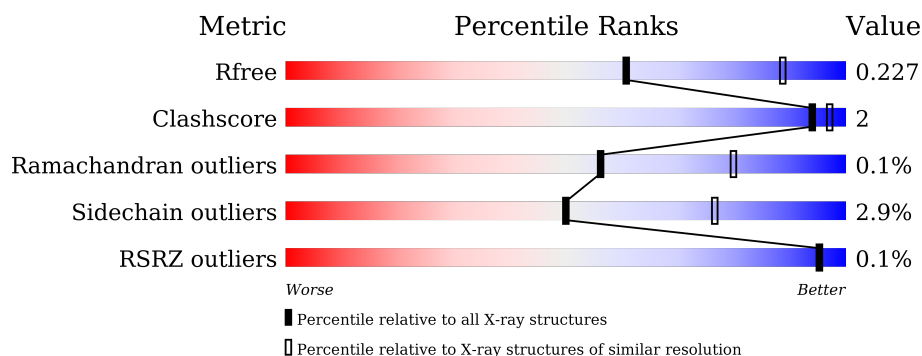
1 Overall quality at a glance

The following experimental techniques were used to determine the structure:

X-RAY DIFFRACTION


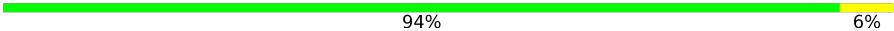
The reported resolution of this entry is 2.61 Å.

Percentile scores (ranging between 0-100) for global validation metrics of the entry are shown in the following graphic. The table shows the number of entries on which the scores are based.



Metric	Whole archive (#Entries)	Similar resolution (#Entries, resolution range(Å))
R_{free}	91344	2700 (2.64-2.60)
Clashscore	102246	3065 (2.64-2.60)
Ramachandran outliers	100387	3015 (2.64-2.60)
Sidechain outliers	100360	3015 (2.64-2.60)
RSRZ outliers	91569	2706 (2.64-2.60)

The table below summarises the geometric issues observed across the polymeric chains and their fit to the electron density. The red, orange, yellow and green segments on the lower bar indicate the fraction of residues that contain outliers for ≥ 3 , 2, 1 and 0 types of geometric quality criteria. A grey segment represents the fraction of residues that are not modelled. The numeric value for each fraction is indicated below the corresponding segment, with a dot representing fractions $\leq 5\%$. The upper red bar (where present) indicates the fraction of residues that have poor fit to the electron density. The numeric value is given above the bar.

Mol	Chain	Length	Quality of chain
1	A	728	
1	B	728	

The following table lists non-polymeric compounds, carbohydrate monomers and non-standard residues in protein, DNA, RNA chains that are outliers for geometric or electron-density-fit criteria:

Mol	Type	Chain	Res	Chirality	Geometry	Clashes	Electron density
2	NAG	A	804	-	-	-	X
2	NAG	A	806	-	-	-	X
2	NAG	A	808	-	-	-	X
2	NAG	B	810	-	-	-	X

2 Entry composition [i](#)

There are 5 unique types of molecules in this entry. The entry contains 13686 atoms, of which 0 are hydrogens and 0 are deuteriums.

In the tables below, the ZeroOcc column contains the number of atoms modelled with zero occupancy, the AltConf column contains the number of residues with at least one atom in alternate conformation and the Trace column contains the number of residues modelled with at most 2 atoms.

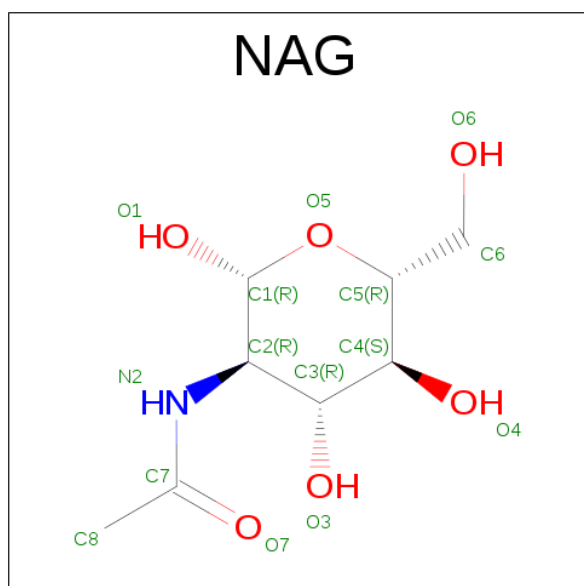
- Molecule 1 is a protein called Dipeptidyl peptidase 4.

Mol	Chain	Residues	Atoms					ZeroOcc	AltConf	Trace
1	A	728	Total	C	N	O	S	0	6	0
			5994	3845	988	1135	26			
1	B	728	Total	C	N	O	S	0	2	0
			5972	3833	982	1130	27			

There are 2 discrepancies between the modelled and reference sequences:

Chain	Residue	Modelled	Actual	Comment	Reference
A	39	THR	-	expression tag	UNP P27487
B	39	THR	-	expression tag	UNP P27487

- Molecule 2 is N-ACETYL-D-GLUCOSAMINE (three-letter code: NAG) (formula: $C_8H_{15}NO_6$).



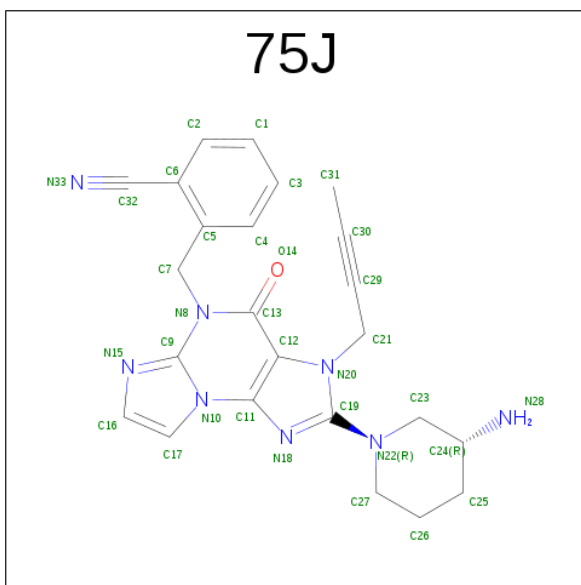
Mol	Chain	Residues	Atoms				ZeroOcc	AltConf
2	A	1	Total	C	N	O	0	0
			14	8	1	5		

Continued on next page...

Continued from previous page...

Mol	Chain	Residues	Atoms				ZeroOcc	AltConf
2	A	1	Total	C	N	O	0	0
			14	8	1	5		
2	A	1	Total	C	N	O	0	0
			14	8	1	5		
2	A	1	Total	C	N	O	0	0
			14	8	1	5		
2	A	1	Total	C	N	O	0	0
			14	8	1	5		
2	A	1	Total	C	N	O	0	0
			14	8	1	5		
2	A	1	Total	C	N	O	0	0
			14	8	1	5		
2	B	1	Total	C	N	O	0	0
			14	8	1	5		
2	B	1	Total	C	N	O	0	0
			14	8	1	5		
2	B	1	Total	C	N	O	0	0
			14	8	1	5		
2	B	1	Total	C	N	O	0	0
			14	8	1	5		
2	B	1	Total	C	N	O	0	0
			14	8	1	5		
2	B	1	Total	C	N	O	0	0
			14	8	1	5		
2	B	1	Total	C	N	O	0	0
			14	8	1	5		
2	B	1	Total	C	N	O	0	0
			14	8	1	5		

- Molecule 3 is 2-({2-[(3R)-3-aminopiperidin-1-yl]-3-(but-2-yn-1-yl)-4-oxo-3,4-dihydro-5H-imidazo[2,1-b]purin-5-yl}methyl)benzonitrile (three-letter code: 75J) (formula: C₂₄H₂₄N₈O).



Mol	Chain	Residues	Atoms				ZeroOcc	AltConf
3	A	1	Total	C	N	O	0	0
			33	24	8	1		
3	B	1	Total	C	N	O	0	0
			33	24	8	1		

- Molecule 4 is SODIUM ION (three-letter code: NA) (formula: Na).

Mol	Chain	Residues	Atoms		ZeroOcc	AltConf
4	A	1	Total	Na	0	0
			1	1		

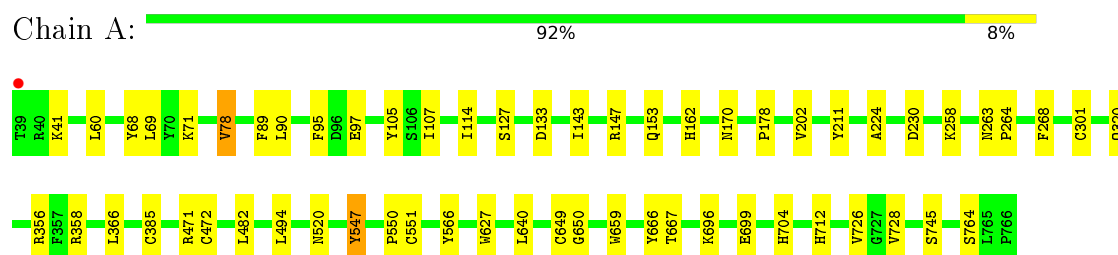
- Molecule 5 is water.

Mol	Chain	Residues	Atoms		ZeroOcc	AltConf
5	A	715	Total	O	0	0
			715	715		
5	B	672	Total	O	0	0
			672	672		

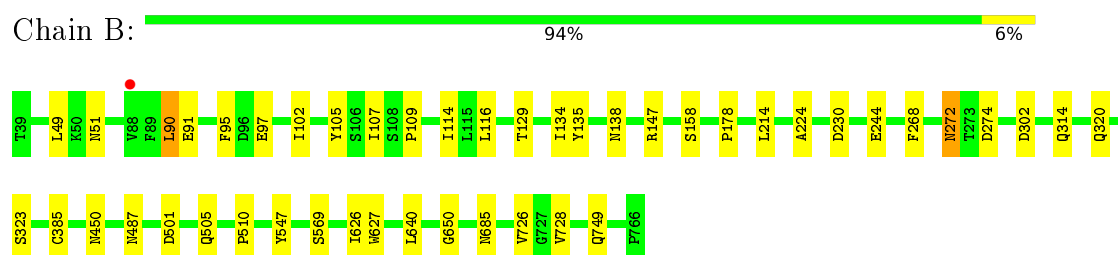
3 Residue-property plots

These plots are drawn for all protein, RNA and DNA chains in the entry. The first graphic for a chain summarises the proportions of errors displayed in the second graphic. The second graphic shows the sequence view annotated by issues in geometry and electron density. Residues are color-coded according to the number of geometric quality criteria for which they contain at least one outlier: green = 0, yellow = 1, orange = 2 and red = 3 or more. A red dot above a residue indicates a poor fit to the electron density ($RSRZ > 2$). Stretches of 2 or more consecutive residues without any outlier are shown as a green connector. Residues present in the sample, but not in the model, are shown in grey.

- Molecule 1: Dipeptidyl peptidase 4



- Molecule 1: Dipeptidyl peptidase 4



4 Data and refinement statistics

Property	Value	Source
Space group	P 21 21 21	Depositor
Cell constants a, b, c, α , β , γ	118.12Å 126.01Å 137.55Å 90.00° 90.00° 90.00°	Depositor
Resolution (Å)	92.91 – 2.61 89.61 – 2.61	Depositor EDS
% Data completeness (in resolution range)	99.8 (92.91-2.61) 99.8 (89.61-2.61)	Depositor EDS
R_{merge}	(Not available)	Depositor
R_{sym}	0.12	Depositor
$\langle I/\sigma(I) \rangle$ ¹	2.99 (at 2.62Å)	Xtriage
Refinement program	BUSTER 2.9.4	Depositor
R, R_{free}	0.148 , 0.226 0.151 , 0.227	Depositor DCC
R_{free} test set	3168 reflections (5.30%)	DCC
Wilson B-factor (Å ²)	27.1	Xtriage
Anisotropy	0.479	Xtriage
Bulk solvent k_{sol} (e/Å ³), B_{sol} (Å ²)	0.31 , 61.8	EDS
L-test for twinning ²	$\langle L \rangle = 0.48$, $\langle L^2 \rangle = 0.31$	Xtriage
Estimated twinning fraction	No twinning to report.	Xtriage
F_o, F_c correlation	0.95	EDS
Total number of atoms	13686	wwPDB-VP
Average B, all atoms (Å ²)	28.0	wwPDB-VP

Xtriage's analysis on translational NCS is as follows: *The largest off-origin peak in the Patterson function is 2.78% of the height of the origin peak. No significant pseudotranslation is detected.*

¹Intensities estimated from amplitudes.

²Theoretical values of $\langle |L| \rangle$, $\langle L^2 \rangle$ for acentric reflections are 0.5, 0.333 respectively for untwinned datasets, and 0.375, 0.2 for perfectly twinned datasets.

5 Model quality

5.1 Standard geometry

Bond lengths and bond angles in the following residue types are not validated in this section: NA, NAG, 75J

The Z score for a bond length (or angle) is the number of standard deviations the observed value is removed from the expected value. A bond length (or angle) with $|Z| > 5$ is considered an outlier worth inspection. RMSZ is the root-mean-square of all Z scores of the bond lengths (or angles).

Mol	Chain	Bond lengths		Bond angles	
		RMSZ	# Z >5	RMSZ	# Z >5
1	A	0.51	0/6191	0.72	0/8419
1	B	0.51	0/6152	0.72	0/8366
All	All	0.51	0/12343	0.72	0/16785

There are no bond length outliers.

There are no bond angle outliers.

There are no chirality outliers.

There are no planarity outliers.

5.2 Too-close contacts

In the following table, the Non-H and H(model) columns list the number of non-hydrogen atoms and hydrogen atoms in the chain respectively. The H(added) column lists the number of hydrogen atoms added and optimized by MolProbity. The Clashes column lists the number of clashes within the asymmetric unit, whereas Symm-Clashes lists symmetry related clashes.

Mol	Chain	Non-H	H(model)	H(added)	Clashes	Symm-Clashes
1	A	5994	0	5700	23	0
1	B	5972	0	5689	16	0
2	A	126	0	114	2	0
2	B	140	0	126	2	0
3	A	33	0	0	0	0
3	B	33	0	0	0	0
4	A	1	0	0	0	0
5	A	715	0	0	1	0
5	B	672	0	0	0	0
All	All	13686	0	11629	42	0

The all-atom clashscore is defined as the number of clashes found per 1000 atoms (including

hydrogen atoms). The all-atom clashscore for this structure is 2.

All (42) close contacts within the same asymmetric unit are listed below, sorted by their clash magnitude.

Atom-1	Atom-2	Interatomic distance (Å)	Clash overlap (Å)
1:A:258:LYS:HZ1	1:A:712:HIS:HD2	1.41	0.69
1:A:258:LYS:NZ	1:A:712:HIS:HD2	1.93	0.65
1:A:78:VAL:HG22	1:A:89:PHE:HB2	1.79	0.65
1:A:143:ILE:HD13	1:A:178:PRO:HB2	1.82	0.62
1:B:640:LEU:HD11	1:B:650:GLY:HA3	1.80	0.61
1:B:302:ASP:HB3	1:B:314:GLN:HB2	1.83	0.60
1:B:726:VAL:HG23	1:B:728:VAL:HG23	1.84	0.59
1:B:224:ALA:HB1	1:B:268:PHE:CZ	2.41	0.56
1:B:114:ILE:HG23	1:B:135:TYR:HB3	1.88	0.56
2:A:809:NAG:H62	5:A:1399:HOH:O	2.08	0.54
2:B:801:NAG:O3	2:B:802:NAG:H2	2.09	0.52
1:A:640:LEU:HD11	1:A:650:GLY:HA3	1.91	0.52
1:B:501:ASP:O	1:B:505:GLN:HG2	2.09	0.51
1:A:153:GLN:HE22	1:A:170:ASN:ND2	2.08	0.51
1:B:134:ILE:HD13	1:B:178:PRO:HB3	1.92	0.51
1:B:102:ILE:HD13	1:B:116:LEU:HD22	1.94	0.48
1:A:356:ARG:HD3	1:A:551:CYS:SG	2.54	0.48
1:B:49:LEU:HB3	1:B:749:GLN:HG2	1.96	0.48
1:A:69:LEU:HD13	1:A:107:ILE:HD13	1.95	0.47
1:A:301:CYS:O	1:A:358:ARG:NH1	2.48	0.47
1:A:230:ASP:OD1	1:A:264:PRO:HB3	2.15	0.47
1:B:105:TYR:HB2	1:B:114:ILE:HD11	1.96	0.47
1:B:272:ASN:HD21	1:B:274:ASP:HB2	1.80	0.46
1:B:626:ILE:O	1:B:650:GLY:HA2	2.16	0.45
1:B:109:PRO:HG2	1:B:158:SER:O	2.17	0.45
1:A:60:LEU:HB2	1:A:68:TYR:CD1	2.52	0.44
2:A:802:NAG:H4	2:A:803:NAG:H2	1.63	0.44
1:B:510:PRO:HD3	1:B:569:SER:HB2	2.00	0.43
1:B:90:LEU:HD21	1:B:95:PHE:HE2	1.84	0.42
1:A:162:HIS:HD2	1:A:178:PRO:HD3	1.84	0.42
1:A:90:LEU:HD21	1:A:95:PHE:HE2	1.83	0.42
1:A:224:ALA:HB1	1:A:268:PHE:CZ	2.55	0.42
1:A:105:TYR:HB2	1:A:114:ILE:HD11	2.02	0.42
1:A:550:PRO:HD2	1:A:666:TYR:OH	2.20	0.41
1:A:659:TRP:HB3	1:A:667:THR:CG2	2.51	0.41
1:A:107:ILE:HG13	1:A:114:ILE:HD12	2.03	0.41
1:A:726:VAL:HG23	1:A:728:VAL:HG23	2.02	0.41
1:A:547:TYR:C	1:A:547:TYR:CD1	2.94	0.41

Continued on next page...

Continued from previous page...

Atom-1	Atom-2	Interatomic distance (Å)	Clash overlap (Å)
1:A:649:CYS:HA	1:A:699:GLU:O	2.21	0.41
1:B:147:ARG:HE	2:B:803:NAG:H83	1.85	0.41
1:A:127:SER:HB3	1:A:211:TYR:CD1	2.56	0.41
1:A:482:LEU:HB2	1:A:494:LEU:HD11	2.03	0.41

There are no symmetry-related clashes.

5.3 Torsion angles [i](#)

5.3.1 Protein backbone [i](#)

In the following table, the Percentiles column shows the percent Ramachandran outliers of the chain as a percentile score with respect to all X-ray entries followed by that with respect to entries of similar resolution.

The Analysed column shows the number of residues for which the backbone conformation was analysed, and the total number of residues.

Mol	Chain	Analysed	Favoured	Allowed	Outliers	Percentiles	
1	A	732/728 (100%)	703 (96%)	28 (4%)	1 (0%)	56	80
1	B	728/728 (100%)	696 (96%)	31 (4%)	1 (0%)	56	80
All	All	1460/1456 (100%)	1399 (96%)	59 (4%)	2 (0%)	56	80

All (2) Ramachandran outliers are listed below:

Mol	Chain	Res	Type
1	B	320	GLN
1	A	320	GLN

5.3.2 Protein sidechains [i](#)

In the following table, the Percentiles column shows the percent sidechain outliers of the chain as a percentile score with respect to all X-ray entries followed by that with respect to entries of similar resolution.

The Analysed column shows the number of residues for which the sidechain conformation was analysed, and the total number of residues.

Continued on next page...

Continued from previous page...

Mol	Chain	Analysed	Rotameric	Outliers	Percentiles
1	A	659/653 (101%)	638 (97%)	21 (3%)	46 74
1	B	655/653 (100%)	637 (97%)	18 (3%)	52 78
All	All	1314/1306 (101%)	1275 (97%)	39 (3%)	50 75

All (39) residues with a non-rotameric sidechain are listed below:

Mol	Chain	Res	Type
1	A	41	LYS
1	A	71	LYS
1	A	78	VAL
1	A	97	GLU
1	A	133	ASP
1	A	147	ARG
1	A	202	VAL
1	A	263	ASN
1	A	366	LEU
1	A	385	CYS
1	A	471[A]	ARG
1	A	471[B]	ARG
1	A	472	CYS
1	A	520	ASN
1	A	547	TYR
1	A	566	TYR
1	A	627	TRP
1	A	696	LYS
1	A	704	HIS
1	A	745	SER
1	A	764	SER
1	B	51	ASN
1	B	90	LEU
1	B	91	GLU
1	B	97	GLU
1	B	107	ILE
1	B	129	THR
1	B	138	ASN
1	B	214	LEU
1	B	230	ASP
1	B	244	GLU
1	B	272	ASN

Continued on next page...

Continued from previous page...

Mol	Chain	Res	Type
1	B	323	SER
1	B	385	CYS
1	B	450	ASN
1	B	487	ASN
1	B	547	TYR
1	B	627	TRP
1	B	685	ASN

Some sidechains can be flipped to improve hydrogen bonding and reduce clashes. All (14) such sidechains are listed below:

Mol	Chain	Res	Type
1	A	123	GLN
1	A	169	ASN
1	A	170	ASN
1	A	263	ASN
1	A	572	ASN
1	A	712	HIS
1	A	731	GLN
1	B	169	ASN
1	B	272	ASN
1	B	345	HIS
1	B	487	ASN
1	B	533	HIS
1	B	572	ASN
1	B	712	HIS

5.3.3 RNA ⓘ

There are no RNA molecules in this entry.

5.4 Non-standard residues in protein, DNA, RNA chains ⓘ

There are no non-standard protein/DNA/RNA residues in this entry.

5.5 Carbohydrates ⓘ

There are no carbohydrates in this entry.

5.6 Ligand geometry

Of 22 ligands modelled in this entry, 1 is monoatomic - leaving 21 for Mogul analysis.

In the following table, the Counts columns list the number of bonds (or angles) for which Mogul statistics could be retrieved, the number of bonds (or angles) that are observed in the model and the number of bonds (or angles) that are defined in the chemical component dictionary. The Link column lists molecule types, if any, to which the group is linked. The Z score for a bond length (or angle) is the number of standard deviations the observed value is removed from the expected value. A bond length (or angle) with $|Z| > 2$ is considered an outlier worth inspection. RMSZ is the root-mean-square of all Z scores of the bond lengths (or angles).

Mol	Type	Chain	Res	Link	Bond lengths			Bond angles		
					Counts	RMSZ	# $ Z > 2$	Counts	RMSZ	# $ Z > 2$
2	NAG	A	801	1	14,14,15	1.20	1 (7%)	15,19,21	2.18	5 (33%)
2	NAG	A	802	1,2	14,14,15	1.19	1 (7%)	15,19,21	2.11	6 (40%)
2	NAG	A	803	2	14,14,15	1.81	3 (21%)	15,19,21	2.44	5 (33%)
2	NAG	A	804	1,2	14,14,15	1.36	3 (21%)	15,19,21	1.96	4 (26%)
2	NAG	A	805	2	14,14,15	1.62	2 (14%)	15,19,21	2.17	7 (46%)
2	NAG	A	806	1	14,14,15	0.99	0	15,19,21	1.37	3 (20%)
2	NAG	A	807	1	14,14,15	2.22	4 (28%)	15,19,21	2.09	5 (33%)
2	NAG	A	808	1,2	14,14,15	1.52	2 (14%)	15,19,21	1.92	3 (20%)
2	NAG	A	809	2	14,14,15	1.63	2 (14%)	15,19,21	2.14	4 (26%)
3	75J	A	810	-	27,37,37	1.89	6 (22%)	28,53,53	2.63	9 (32%)
2	NAG	B	801	1,2	14,14,15	1.07	1 (7%)	15,19,21	1.72	3 (20%)
2	NAG	B	802	2	14,14,15	2.41	4 (28%)	15,19,21	2.76	5 (33%)
2	NAG	B	803	1	14,14,15	1.86	3 (21%)	15,19,21	1.90	4 (26%)
2	NAG	B	804	1,2	14,14,15	1.65	1 (7%)	15,19,21	1.36	3 (20%)
2	NAG	B	805	2	14,14,15	1.76	5 (35%)	15,19,21	1.63	4 (26%)
2	NAG	B	806	1,2	14,14,15	1.37	1 (7%)	15,19,21	1.81	3 (20%)
2	NAG	B	807	2	14,14,15	1.49	2 (14%)	15,19,21	1.56	3 (20%)
2	NAG	B	808	1,2	14,14,15	1.91	4 (28%)	15,19,21	2.10	6 (40%)
2	NAG	B	809	2	14,14,15	2.00	7 (50%)	15,19,21	1.74	3 (20%)
2	NAG	B	810	1	14,14,15	1.82	4 (28%)	15,19,21	1.87	5 (33%)
3	75J	B	811	-	27,37,37	1.93	8 (29%)	28,53,53	3.60	11 (39%)

In the following table, the Chirals column lists the number of chiral outliers, the number of chiral centers analysed, the number of these observed in the model and the number defined in the chemical component dictionary. Similar counts are reported in the Torsion and Rings columns. '-' means no outliers of that kind were identified.

Mol	Type	Chain	Res	Link	Chirals	Torsions	Rings
2	NAG	A	801	1	-	0/6/23/26	0/1/1/1
2	NAG	A	802	1,2	-	0/6/23/26	0/1/1/1
2	NAG	A	803	2	-	0/6/23/26	0/1/1/1
2	NAG	A	804	1,2	-	0/6/23/26	0/1/1/1
2	NAG	A	805	2	-	0/6/23/26	0/1/1/1
2	NAG	A	806	1	-	0/6/23/26	0/1/1/1
2	NAG	A	807	1	-	0/6/23/26	0/1/1/1
2	NAG	A	808	1,2	-	0/6/23/26	0/1/1/1
2	NAG	A	809	2	-	0/6/23/26	0/1/1/1
3	75J	A	810	-	-	0/8/24/24	0/5/5/5
2	NAG	B	801	1,2	-	0/6/23/26	0/1/1/1
2	NAG	B	802	2	-	0/6/23/26	0/1/1/1
2	NAG	B	803	1	-	0/6/23/26	0/1/1/1
2	NAG	B	804	1,2	-	0/6/23/26	0/1/1/1
2	NAG	B	805	2	-	0/6/23/26	0/1/1/1
2	NAG	B	806	1,2	-	0/6/23/26	0/1/1/1
2	NAG	B	807	2	-	0/6/23/26	0/1/1/1
2	NAG	B	808	1,2	-	0/6/23/26	0/1/1/1
2	NAG	B	809	2	-	0/6/23/26	0/1/1/1
2	NAG	B	810	1	-	0/6/23/26	0/1/1/1
3	75J	B	811	-	-	0/8/24/24	0/5/5/5

All (64) bond length outliers are listed below:

Mol	Chain	Res	Type	Atoms	Z	Observed(Å)	Ideal(Å)
3	B	811	75J	C19-N18	-4.38	1.28	1.33
3	B	811	75J	C11-N18	-2.26	1.31	1.33
3	B	811	75J	C7-N8	-2.11	1.45	1.49
2	A	808	NAG	C4-C3	2.02	1.57	1.52
2	B	809	NAG	C2-N2	2.03	1.50	1.46
3	B	811	75J	C23-N22	2.04	1.51	1.46
2	B	809	NAG	C6-C5	2.05	1.59	1.51
2	A	807	NAG	O4-C4	2.06	1.47	1.43
3	A	810	75J	C23-C24	2.07	1.55	1.52
2	A	804	NAG	C1-C2	2.11	1.55	1.52
2	A	804	NAG	C4-C3	2.13	1.58	1.52
2	B	803	NAG	C4-C5	2.13	1.57	1.53
2	B	801	NAG	C1-C2	2.15	1.55	1.52
2	B	808	NAG	C6-C5	2.16	1.59	1.51
2	B	808	NAG	C4-C3	2.18	1.58	1.52
2	A	803	NAG	C4-C5	2.22	1.57	1.53
2	B	809	NAG	O5-C5	2.23	1.48	1.43
2	B	805	NAG	C1-C2	2.24	1.55	1.52

Continued on next page...

Continued from previous page...

Mol	Chain	Res	Type	Atoms	Z	Observed(Å)	Ideal(Å)
2	B	805	NAG	C3-C2	2.26	1.57	1.52
2	B	805	NAG	O4-C4	2.32	1.48	1.43
2	A	803	NAG	C2-N2	2.38	1.50	1.46
2	A	807	NAG	C4-C5	2.41	1.58	1.53
2	B	810	NAG	C1-C2	2.42	1.55	1.52
2	B	807	NAG	C3-C2	2.45	1.58	1.52
3	A	810	75J	C1-C3	2.49	1.44	1.38
2	B	802	NAG	C4-C3	2.51	1.59	1.52
2	A	807	NAG	O5-C1	2.54	1.47	1.43
3	A	810	75J	C6-C5	2.61	1.44	1.40
2	B	809	NAG	C3-C2	2.66	1.58	1.52
2	B	810	NAG	C3-C2	2.68	1.58	1.52
2	B	809	NAG	C4-C5	2.70	1.59	1.53
2	A	804	NAG	O7-C7	2.74	1.29	1.23
2	B	809	NAG	C1-C2	2.74	1.56	1.52
2	A	802	NAG	C1-C2	2.86	1.56	1.52
3	B	811	75J	C9-N15	2.89	1.39	1.35
2	A	805	NAG	C1-C2	2.92	1.56	1.52
2	B	803	NAG	C3-C2	2.97	1.59	1.52
2	A	805	NAG	C3-C2	3.03	1.59	1.52
2	A	801	NAG	C1-C2	3.04	1.56	1.52
2	B	805	NAG	C4-C5	3.04	1.59	1.53
2	B	810	NAG	O4-C4	3.10	1.50	1.43
2	A	809	NAG	C4-C5	3.17	1.60	1.53
3	B	811	75J	C13-C12	3.17	1.47	1.40
2	B	808	NAG	O3-C3	3.21	1.50	1.43
3	A	810	75J	C13-C12	3.28	1.47	1.40
2	B	805	NAG	C4-C3	3.29	1.61	1.52
2	B	809	NAG	C4-C3	3.52	1.61	1.52
2	B	802	NAG	C3-C2	3.57	1.60	1.52
2	B	806	NAG	C1-C2	3.65	1.57	1.52
2	A	808	NAG	C1-C2	3.65	1.57	1.52
2	B	807	NAG	C1-C2	3.66	1.57	1.52
3	A	810	75J	C17-C16	3.66	1.50	1.36
2	B	810	NAG	C4-C5	3.70	1.61	1.53
2	B	803	NAG	C1-C2	3.92	1.58	1.52
2	A	809	NAG	C1-C2	3.94	1.58	1.52
3	B	811	75J	C17-C16	3.95	1.51	1.36
2	B	808	NAG	C1-C2	4.05	1.58	1.52
2	B	802	NAG	C2-N2	4.25	1.53	1.46
3	B	811	75J	C13-N8	4.49	1.45	1.38
2	A	803	NAG	C1-C2	4.85	1.59	1.52

Continued on next page...

Continued from previous page...

Mol	Chain	Res	Type	Atoms	Z	Observed(Å)	Ideal(Å)
2	B	804	NAG	C1-C2	5.09	1.59	1.52
2	B	802	NAG	C1-C2	5.49	1.60	1.52
2	A	807	NAG	C1-C2	5.89	1.60	1.52
3	A	810	75J	C13-N8	6.04	1.47	1.38

All (101) bond angle outliers are listed below:

Mol	Chain	Res	Type	Atoms	Z	Observed(°)	Ideal(°)
3	B	811	75J	C12-C13-N8	-14.65	109.87	120.52
3	A	810	75J	C12-C13-N8	-9.37	113.72	120.52
2	A	804	NAG	O3-C3-C2	-4.90	98.90	109.37
3	B	811	75J	C23-N22-C19	-4.56	114.37	121.76
3	A	810	75J	C16-C17-N10	-4.27	103.58	107.02
2	A	801	NAG	C4-C3-C2	-4.10	104.97	111.34
3	B	811	75J	C16-C17-N10	-4.06	103.75	107.02
3	B	811	75J	C27-N22-C19	-3.65	115.87	121.76
2	B	801	NAG	O3-C3-C2	-3.60	101.66	109.37
3	B	811	75J	C25-C26-C27	-3.59	106.05	110.94
3	A	810	75J	C23-N22-C19	-3.48	116.11	121.76
2	B	807	NAG	O3-C3-C4	-3.39	102.71	110.36
2	B	804	NAG	C8-C7-N2	-3.07	110.20	116.10
2	B	808	NAG	C4-C3-C2	-3.07	106.57	111.34
2	B	806	NAG	C8-C7-N2	-2.98	110.38	116.10
2	A	802	NAG	O4-C4-C3	-2.97	103.66	110.36
2	A	802	NAG	C8-C7-N2	-2.74	110.85	116.10
2	B	805	NAG	C2-N2-C7	-2.72	119.56	123.11
2	A	801	NAG	C8-C7-N2	-2.72	110.89	116.10
2	A	807	NAG	C8-C7-N2	-2.70	110.92	116.10
3	A	810	75J	C5-C6-C32	-2.60	117.83	120.14
2	B	810	NAG	C8-C7-N2	-2.57	111.17	116.10
3	A	810	75J	C27-N22-C19	-2.55	117.63	121.76
2	A	809	NAG	O4-C4-C3	-2.52	104.67	110.36
2	A	804	NAG	C8-C7-N2	-2.50	111.30	116.10
2	A	804	NAG	C2-N2-C7	-2.49	119.87	123.11
2	B	808	NAG	O5-C5-C4	-2.31	106.31	110.13
2	B	802	NAG	C8-C7-N2	-2.24	111.81	116.10
2	A	805	NAG	C8-C7-N2	-2.20	111.89	116.10
2	B	804	NAG	O4-C4-C3	-2.17	105.47	110.36
2	A	806	NAG	O4-C4-C3	-2.16	105.49	110.36
3	A	810	75J	C1-C2-C6	-2.14	117.36	120.34
2	A	805	NAG	O5-C5-C6	-2.13	102.78	107.34
2	A	806	NAG	O5-C5-C4	-2.11	106.64	110.13

Continued on next page...

Continued from previous page...

Mol	Chain	Res	Type	Atoms	Z	Observed(°)	Ideal(°)
2	B	810	NAG	O5-C5-C6	-2.07	102.90	107.34
3	B	811	75J	C25-C24-N28	-2.01	104.86	110.97
3	A	810	75J	C12-C11-N18	2.11	115.25	111.39
3	B	811	75J	C12-C11-N18	2.12	115.26	111.39
2	B	807	NAG	C1-O5-C5	2.13	115.27	112.14
2	B	805	NAG	O3-C3-C4	2.13	115.15	110.36
2	B	804	NAG	O7-C7-N2	2.16	126.26	121.84
2	B	805	NAG	C3-C4-C5	2.18	114.12	110.23
2	B	807	NAG	C4-C3-C2	2.24	114.82	111.34
2	A	805	NAG	O5-C5-C4	2.25	113.86	110.13
2	A	807	NAG	O5-C5-C6	2.28	112.22	107.34
2	A	802	NAG	O5-C5-C4	2.30	113.95	110.13
2	A	803	NAG	C1-O5-C5	2.31	115.53	112.14
2	A	802	NAG	O3-C3-C2	2.33	114.35	109.37
2	A	803	NAG	O7-C7-N2	2.33	126.60	121.84
3	B	811	75J	C21-N20-C19	2.34	128.40	125.28
2	A	805	NAG	O7-C7-N2	2.34	126.62	121.84
2	B	809	NAG	O4-C4-C3	2.35	115.66	110.36
3	B	811	75J	C3-C1-C2	2.37	123.49	120.20
2	B	803	NAG	O5-C5-C4	2.38	114.08	110.13
2	B	808	NAG	C1-O5-C5	2.39	115.66	112.14
2	A	801	NAG	C1-O5-C5	2.42	115.70	112.14
2	B	803	NAG	C4-C3-C2	2.47	115.17	111.34
2	A	805	NAG	O3-C3-C2	2.56	114.85	109.37
2	B	810	NAG	O5-C5-C4	2.56	114.38	110.13
2	A	805	NAG	C2-N2-C7	2.63	126.52	123.11
2	A	803	NAG	C3-C4-C5	2.64	114.94	110.23
2	B	803	NAG	C2-N2-C7	2.66	126.56	123.11
3	B	811	75J	C25-C24-C23	2.70	113.36	109.71
2	A	802	NAG	C4-C3-C2	2.72	115.55	111.34
2	B	806	NAG	C4-C3-C2	2.73	115.58	111.34
2	A	808	NAG	O5-C5-C4	2.82	114.81	110.13
2	A	806	NAG	O4-C4-C5	2.88	116.82	109.23
2	B	808	NAG	O3-C3-C2	3.00	115.79	109.37
2	A	807	NAG	O7-C7-N2	3.05	128.06	121.84
2	B	801	NAG	C1-O5-C5	3.08	116.67	112.14
2	B	802	NAG	C1-O5-C5	3.11	116.72	112.14
2	B	802	NAG	O7-C7-N2	3.13	128.22	121.84
2	B	809	NAG	C2-N2-C7	3.22	127.30	123.11
2	A	804	NAG	C4-C3-C2	3.27	116.42	111.34
2	B	808	NAG	O6-C6-C5	3.36	122.52	111.30
2	B	801	NAG	C4-C3-C2	3.45	116.70	111.34

Continued on next page...

Continued from previous page...

Mol	Chain	Res	Type	Atoms	Z	Observed(°)	Ideal(°)
2	B	810	NAG	O4-C4-C5	3.49	118.41	109.23
2	A	809	NAG	C1-O5-C5	3.49	117.28	112.14
2	A	801	NAG	O4-C4-C3	3.56	118.40	110.36
2	B	805	NAG	C4-C3-C2	3.57	116.87	111.34
2	A	808	NAG	C4-C3-C2	3.60	116.93	111.34
2	A	807	NAG	O4-C4-C5	3.64	118.82	109.23
2	B	808	NAG	O3-C3-C4	3.74	118.78	110.36
2	A	801	NAG	O3-C3-C4	3.76	118.84	110.36
2	B	810	NAG	C1-O5-C5	3.80	117.72	112.14
2	B	809	NAG	C3-C4-C5	3.84	117.08	110.23
3	A	810	75J	C25-C26-C27	3.84	116.18	110.94
2	A	807	NAG	C1-O5-C5	3.90	117.87	112.14
2	A	808	NAG	C3-C4-C5	4.15	117.62	110.23
2	B	802	NAG	C4-C3-C2	4.18	117.83	111.34
2	B	803	NAG	C1-O5-C5	4.20	118.31	112.14
2	A	802	NAG	C1-O5-C5	4.30	118.46	112.14
2	A	809	NAG	O5-C5-C4	4.34	117.32	110.13
2	B	806	NAG	C2-N2-C7	4.53	129.00	123.11
2	A	809	NAG	C2-N2-C7	4.75	129.29	123.11
2	A	803	NAG	C4-C3-C2	4.76	118.73	111.34
3	A	810	75J	C13-C12-C11	4.88	123.41	119.93
2	A	805	NAG	C1-O5-C5	5.51	120.25	112.14
2	A	803	NAG	C2-N2-C7	5.96	130.86	123.11
3	B	811	75J	C13-C12-C11	6.56	124.61	119.93
2	B	802	NAG	C2-N2-C7	8.25	133.84	123.11

There are no chirality outliers.

There are no torsion outliers.

There are no ring outliers.

6 monomers are involved in 4 short contacts:

Mol	Chain	Res	Type	Clashes	Symm-Clashes
2	A	802	NAG	1	0
2	A	803	NAG	1	0
2	A	809	NAG	1	0
2	B	801	NAG	1	0
2	B	802	NAG	1	0
2	B	803	NAG	1	0

5.7 Other polymers [i](#)

There are no such residues in this entry.

5.8 Polymer linkage issues [i](#)

There are no chain breaks in this entry.

6 Fit of model and data [i](#)

6.1 Protein, DNA and RNA chains [i](#)

In the following table, the column labelled ‘#RSRZ> 2’ contains the number (and percentage) of RSRZ outliers, followed by percent RSRZ outliers for the chain as percentile scores relative to all X-ray entries and entries of similar resolution. The OWAB column contains the minimum, median, 95th percentile and maximum values of the occupancy-weighted average B-factor per residue. The column labelled ‘Q< 0.9’ lists the number of (and percentage) of residues with an average occupancy less than 0.9.

Mol	Chain	Analysed	<RSRZ>	#RSRZ>2	OWAB(Å ²)	Q<0.9
1	A	728/728 (100%)	-0.72	1 (0%) 95 95	13, 24, 49, 73	0
1	B	728/728 (100%)	-0.71	1 (0%) 95 95	13, 24, 50, 80	0
All	All	1456/1456 (100%)	-0.72	2 (0%) 95 95	13, 24, 50, 80	0

All (2) RSRZ outliers are listed below:

Mol	Chain	Res	Type	RSRZ
1	B	88	VAL	2.1
1	A	39	THR	2.0

6.2 Non-standard residues in protein, DNA, RNA chains [i](#)

There are no non-standard protein/DNA/RNA residues in this entry.

6.3 Carbohydrates [i](#)

There are no carbohydrates in this entry.

6.4 Ligands [i](#)

In the following table, the Atoms column lists the number of modelled atoms in the group and the number defined in the chemical component dictionary. LLDF column lists the quality of electron density of the group with respect to its neighbouring residues in protein, DNA or RNA chains. The B-factors column lists the minimum, median, 95th percentile and maximum values of B factors of atoms in the group. The column labelled ‘Q< 0.9’ lists the number of atoms with occupancy less than 0.9.

Mol	Type	Chain	Res	Atoms	RSCC	RSR	LLDF	B-factors(Å ²)	Q<0.9
2	NAG	A	808	14/15	0.89	0.24	8.15	60,64,66,66	0

Continued on next page...

Continued from previous page...

Mol	Type	Chain	Res	Atoms	RSCC	RSR	LLDF	B-factors(\AA^2)	Q<0.9
2	NAG	B	810	14/15	0.89	0.20	5.00	44,48,50,50	0
2	NAG	A	804	14/15	0.92	0.16	3.67	39,43,45,46	0
2	NAG	A	806	14/15	0.88	0.16	2.96	35,39,42,42	0
2	NAG	B	805	14/15	0.88	0.15	1.68	45,49,52,52	0
4	NA	A	811	1/1	0.93	0.14	1.54	34,34,34,34	0
3	75J	B	811	33/33	0.98	0.14	1.54	16,23,28,31	0
2	NAG	B	808	14/15	0.94	0.16	1.43	23,27,30,31	0
2	NAG	A	801	14/15	0.85	0.17	1.11	50,54,57,58	0
2	NAG	A	805	14/15	0.88	0.15	1.01	55,59,61,62	0
2	NAG	B	804	14/15	0.95	0.12	0.79	38,41,44,44	0
3	75J	A	810	33/33	0.98	0.12	0.27	6,13,18,19	0
2	NAG	B	801	14/15	0.89	0.11	-0.73	60,63,66,66	0
2	NAG	B	806	14/15	0.98	0.10	-1.28	28,32,34,35	0
2	NAG	B	809	14/15	0.85	0.20	-	47,51,53,54	0
2	NAG	A	809	14/15	0.57	0.36	-	85,89,92,92	0
2	NAG	B	807	14/15	0.94	0.19	-	50,54,56,56	0
2	NAG	B	802	14/15	0.57	0.25	-	82,86,88,88	0
2	NAG	A	802	14/15	0.90	0.18	-	59,63,66,66	0
2	NAG	A	803	14/15	0.78	0.20	-	74,78,81,81	0
2	NAG	A	807	14/15	0.90	0.15	-	45,49,51,51	0
2	NAG	B	803	14/15	0.76	0.21	-	74,77,80,80	0

6.5 Other polymers [i](#)

There are no such residues in this entry.