



Full wwPDB X-ray Structure Validation Report ⓘ

Nov 1, 2016 – 02:03 PM EDT

PDB ID : 5TD4
Title : Starch binding sites on the Human pancreatic alpha amylase D300N variant complexed with an octaose substrate.
Authors : Caner, S.; Brayer, G.D.
Deposited on : 2016-09-16
Resolution : 2.30 Å(reported)

This is a Full wwPDB X-ray Structure Validation Report for a publicly released PDB entry.

We welcome your comments at validation@mail.wwpdb.org

A user guide is available at

<http://wwpdb.org/validation/2016/XrayValidationReportHelp>

with specific help available everywhere you see the ⓘ symbol.

The following versions of software and data (see [references ⓘ](#)) were used in the production of this report:

MolProbity : 4.02b-467
Mogul : 1.7.1 (RC1), CSD as537be (2016)
Xtriage (Phenix) : 1.9-1692
EDS : rb-20028320
Percentile statistics : 20151230.v01 (using entries in the PDB archive December 30th 2015)
Refmac : 5.8.0135
CCP4 : 6.5.0
Ideal geometry (proteins) : Engh & Huber (2001)
Ideal geometry (DNA, RNA) : Parkinson et al. (1996)
Validation Pipeline (wwPDB-VP) : rb-20028320

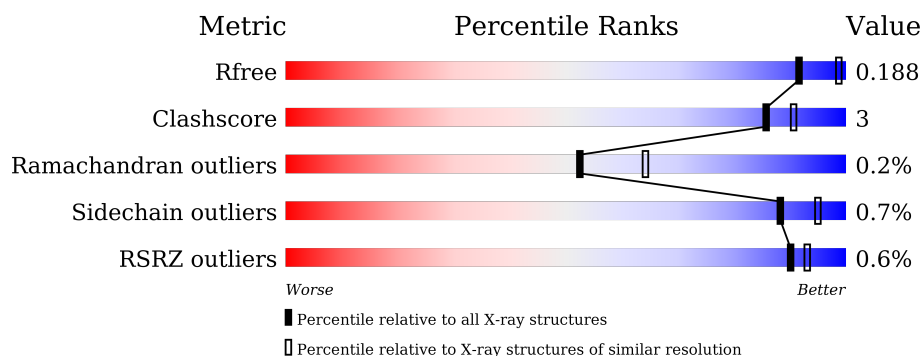
1 Overall quality at a glance

The following experimental techniques were used to determine the structure:

X-RAY DIFFRACTION

The reported resolution of this entry is 2.30 Å.

Percentile scores (ranging between 0-100) for global validation metrics of the entry are shown in the following graphic. The table shows the number of entries on which the scores are based.



Metric	Whole archive (#Entries)	Similar resolution (#Entries, resolution range(Å))
R_{free}	91344	3852 (2.30-2.30)
Clashscore	102246	4452 (2.30-2.30)
Ramachandran outliers	100387	4410 (2.30-2.30)
Sidechain outliers	100360	4409 (2.30-2.30)
RSRZ outliers	91569	3857 (2.30-2.30)

The table below summarises the geometric issues observed across the polymeric chains and their fit to the electron density. The red, orange, yellow and green segments on the lower bar indicate the fraction of residues that contain outliers for ≥ 3 , 2, 1 and 0 types of geometric quality criteria. A grey segment represents the fraction of residues that are not modelled. The numeric value for each fraction is indicated below the corresponding segment, with a dot representing fractions $\leq 5\%$. The upper red bar (where present) indicates the fraction of residues that have poor fit to the electron density. The numeric value is given above the bar.

Mol	Chain	Length	Quality of chain
1	A	496	<div> <div></div> <div>92%</div> <div>7%</div> </div>

The following table lists non-polymeric compounds, carbohydrate monomers and non-standard residues in protein, DNA, RNA chains that are outliers for geometric or electron-density-fit criteria:

Mol	Type	Chain	Res	Chirality	Geometry	Clashes	Electron density
2	CL	A	501	-	-	-	X
3	MTT	A	502	-	-	-	X

Continued on next page...

Continued from previous page...

Mol	Type	Chain	Res	Chirality	Geometry	Clashes	Electron density
3	MTT	A	503	-	-	-	X
4	CEY	A	505	-	-	-	X
5	MAL	A	506	-	-	-	X

2 Entry composition [i](#)

There are 7 unique types of molecules in this entry. The entry contains 4352 atoms, of which 0 are hydrogens and 0 are deuteriums.

In the tables below, the ZeroOcc column contains the number of atoms modelled with zero occupancy, the AltConf column contains the number of residues with at least one atom in alternate conformation and the Trace column contains the number of residues modelled with at most 2 atoms.

- Molecule 1 is a protein called Pancreatic alpha-amylase.

Mol	Chain	Residues	Atoms					ZeroOcc	AltConf	Trace
			Total	C	N	O	S			
1	A	496	3946	2497	697	732	20	0	0	0

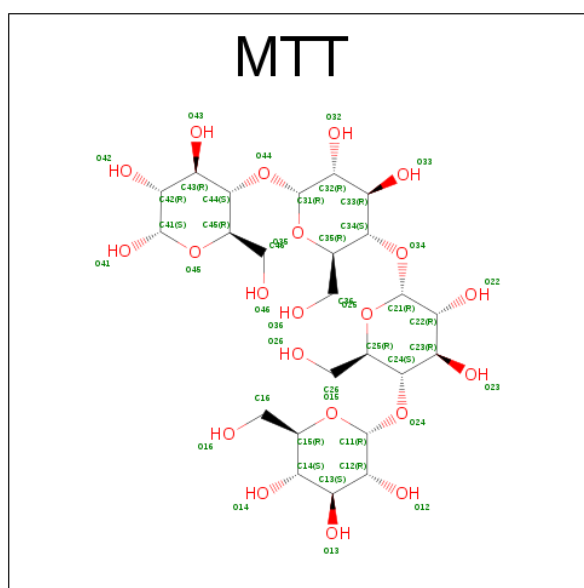
There is a discrepancy between the modelled and reference sequences:

Chain	Residue	Modelled	Actual	Comment	Reference
A	300	ASN	ASP	engineered mutation	UNP P04746

- Molecule 2 is CHLORIDE ION (three-letter code: CL) (formula: Cl).

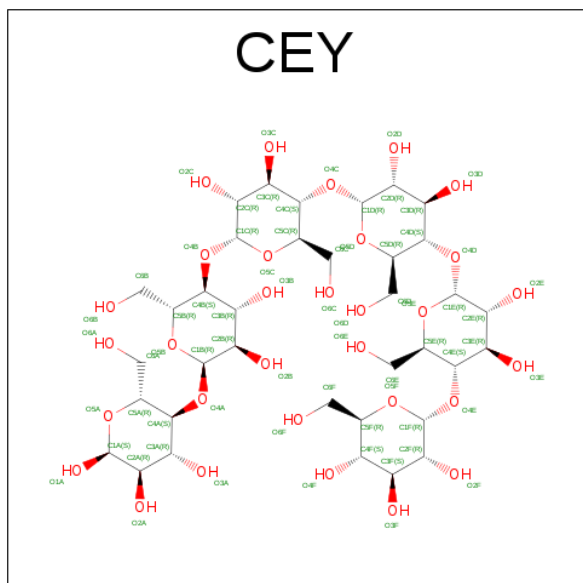
Mol	Chain	Residues	Atoms	ZeroOcc	AltConf
2	A	1	Total Cl 1 1	0	0

- Molecule 3 is MALTOTETRAOSE (three-letter code: MTT) (formula: C₂₄H₄₂O₂₁).



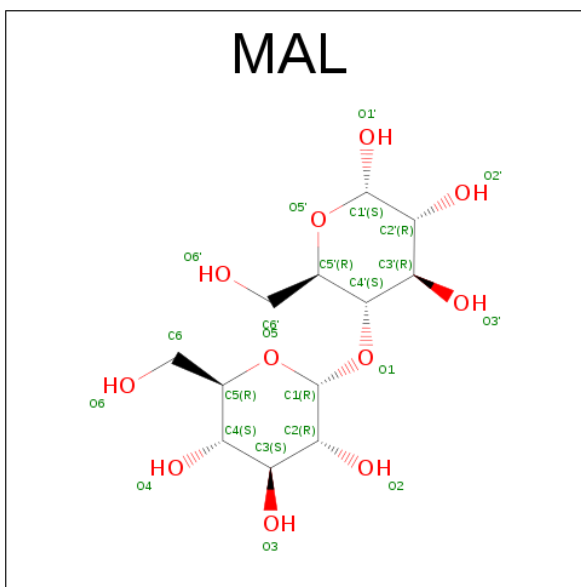
Mol	Chain	Residues	Atoms			ZeroOcc	AltConf
3	A	1	Total	C	O	0	0
			45	24	21		
3	A	1	Total	C	O	0	0
			45	24	21		

- Molecule 4 is alpha-D-glucopyranosyl-(1->4)-alpha-D-glucopyranosyl-(1->4)-alpha-D-glucopyranosyl-(1->4)-alpha-D-glucopyranosyl-(1->4)-alpha-D-glucopyranosyl-(1->4)-alpha-D-glucopyranose (three-letter code: CEY) (formula: C₃₆H₆₂O₃₁).



Mol	Chain	Residues	Atoms			ZeroOcc	AltConf
4	A	1	Total	C	O	0	0
			67	36	31		
4	A	1	Total	C	O	0	0
			67	36	31		

- Molecule 5 is MALTULOSE (three-letter code: MAL) (formula: C₁₂H₂₂O₁₁).



Mol	Chain	Residues	Atoms			ZeroOcc	AltConf
5	A	1	Total	C	O	0	0
			23	12	11		

- Molecule 6 is CALCIUM ION (three-letter code: CA) (formula: Ca).

Mol	Chain	Residues	Atoms		ZeroOcc	AltConf
6	A	1	Total	Ca	0	0
			1	1		

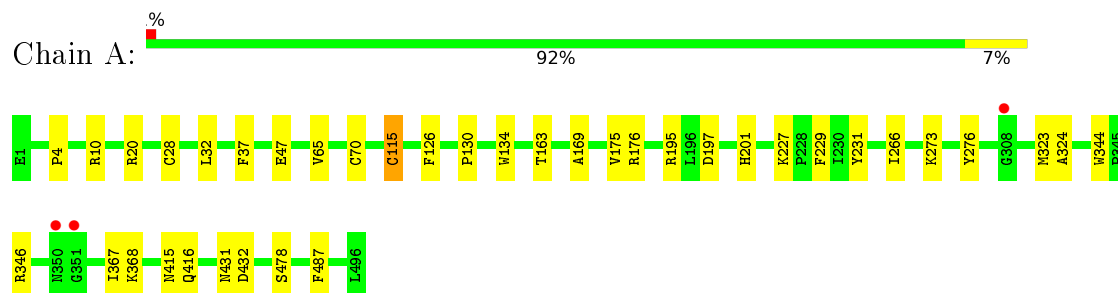
- Molecule 7 is water.

Mol	Chain	Residues	Atoms		ZeroOcc	AltConf
7	A	157	Total	O	0	0
			157	157		

3 Residue-property plots

These plots are drawn for all protein, RNA and DNA chains in the entry. The first graphic for a chain summarises the proportions of errors displayed in the second graphic. The second graphic shows the sequence view annotated by issues in geometry and electron density. Residues are color-coded according to the number of geometric quality criteria for which they contain at least one outlier: green = 0, yellow = 1, orange = 2 and red = 3 or more. A red dot above a residue indicates a poor fit to the electron density ($RSRZ > 2$). Stretches of 2 or more consecutive residues without any outlier are shown as a green connector. Residues present in the sample, but not in the model, are shown in grey.

- Molecule 1: Pancreatic alpha-amylase



4 Data and refinement statistics

Property	Value	Source
Space group	P 21 21 21	Depositor
Cell constants a, b, c, α , β , γ	52.21Å 73.64Å 135.38Å 90.00° 90.00° 90.00°	Depositor
Resolution (Å)	38.48 – 2.30 38.48 – 2.30	Depositor EDS
% Data completeness (in resolution range)	88.8 (38.48-2.30) 88.8 (38.48-2.30)	Depositor EDS
R_{merge}	0.05	Depositor
R_{sym}	(Not available)	Depositor
$\langle I/\sigma(I) \rangle$ ¹	6.52 (at 2.29Å)	Xtriage
Refinement program	PHENIX (1.10.1 _2155: ???)	Depositor
R, R_{free}	0.151 , 0.189 0.150 , 0.188	Depositor DCC
R_{free} test set	1061 reflections (5.00%)	DCC
Wilson B-factor (Å ²)	24.8	Xtriage
Anisotropy	0.443	Xtriage
Bulk solvent k_{sol} (e/Å ³), B_{sol} (Å ²)	0.35 , 43.9	EDS
L-test for twinning ²	$\langle L \rangle = 0.46$, $\langle L^2 \rangle = 0.29$	Xtriage
Estimated twinning fraction	No twinning to report.	Xtriage
F_o, F_c correlation	0.96	EDS
Total number of atoms	4352	wwPDB-VP
Average B, all atoms (Å ²)	23.0	wwPDB-VP

Xtriage's analysis on translational NCS is as follows: *The largest off-origin peak in the Patterson function is 4.12% of the height of the origin peak. No significant pseudotranslation is detected.*

¹Intensities estimated from amplitudes.

²Theoretical values of $\langle |L| \rangle$, $\langle L^2 \rangle$ for acentric reflections are 0.5, 0.333 respectively for untwinned datasets, and 0.375, 0.2 for perfectly twinned datasets.

5 Model quality

5.1 Standard geometry

Bond lengths and bond angles in the following residue types are not validated in this section: CL, CA, MTT, PCA, MAL, CEY

The Z score for a bond length (or angle) is the number of standard deviations the observed value is removed from the expected value. A bond length (or angle) with $|Z| > 5$ is considered an outlier worth inspection. RMSZ is the root-mean-square of all Z scores of the bond lengths (or angles).

Mol	Chain	Bond lengths		Bond angles	
		RMSZ	$\# Z > 5$	RMSZ	$\# Z > 5$
1	A	0.44	0/4053	0.58	0/5506

There are no bond length outliers.

There are no bond angle outliers.

There are no chirality outliers.

There are no planarity outliers.

5.2 Too-close contacts

In the following table, the Non-H and H(model) columns list the number of non-hydrogen atoms and hydrogen atoms in the chain respectively. The H(added) column lists the number of hydrogen atoms added and optimized by MolProbity. The Clashes column lists the number of clashes within the asymmetric unit, whereas Symm-Clashes lists symmetry related clashes.

Mol	Chain	Non-H	H(model)	H(added)	Clashes	Symm-Clashes
1	A	3946	0	3720	20	0
2	A	1	0	0	0	0
3	A	90	0	84	1	0
4	A	134	0	124	3	0
5	A	23	0	22	0	0
6	A	1	0	0	0	0
7	A	157	0	0	1	0
All	All	4352	0	3950	22	0

The all-atom clashscore is defined as the number of clashes found per 1000 atoms (including hydrogen atoms). The all-atom clashscore for this structure is 3.

All (22) close contacts within the same asymmetric unit are listed below, sorted by their clash magnitude.

Atom-1	Atom-2	Interatomic distance (Å)	Clash overlap (Å)
1:A:169:ALA:O	1:A:175:VAL:HG21	1.89	0.72
4:A:504:CEY:H5F	4:A:504:CEY:H6E	1.83	0.61
4:A:505:CEY:H6E	4:A:505:CEY:H5F	1.84	0.59
1:A:273:LYS:HE2	1:A:276:TYR:CZ	2.43	0.54
1:A:368:LYS:HA	3:A:503:MTT:H411	1.91	0.53
1:A:10:ARG:HD3	1:A:37:PHE:O	2.12	0.49
1:A:70:CYS:SG	1:A:115:CYS:CB	3.01	0.49
1:A:4:PRO:HA	1:A:229:PHE:CG	2.49	0.47
1:A:47:GLU:HG2	1:A:65:VAL:HB	1.97	0.46
1:A:197:ASP:OD1	4:A:504:CEY:H2C	2.16	0.45
1:A:227:LYS:HB2	1:A:227:LYS:HE3	1.71	0.45
1:A:126:PHE:O	1:A:130:PRO:HA	2.17	0.45
1:A:175:VAL:HG23	1:A:176:ARG:N	2.31	0.44
1:A:344:TRP:O	1:A:346:ARG:N	2.51	0.44
1:A:416:GLN:HG3	1:A:432:ASP:OD2	2.17	0.43
1:A:323:MET:HG2	1:A:487:PHE:CD1	2.53	0.43
1:A:415:ASN:HB3	1:A:431:ASN:HB3	1.99	0.43
1:A:195:ARG:HB2	1:A:231:TYR:CE2	2.54	0.42
1:A:20:ARG:HD2	1:A:367:ILE:HG22	2.01	0.42
1:A:28:CYS:HA	1:A:32:LEU:HB2	2.02	0.41
1:A:201:HIS:HB3	7:A:617:HOH:O	2.21	0.41
1:A:266:ILE:HD12	1:A:324:ALA:HB2	2.04	0.40

There are no symmetry-related clashes.

5.3 Torsion angles ⓘ

5.3.1 Protein backbone ⓘ

In the following table, the Percentiles column shows the percent Ramachandran outliers of the chain as a percentile score with respect to all X-ray entries followed by that with respect to entries of similar resolution.

The Analysed column shows the number of residues for which the backbone conformation was analysed, and the total number of residues.

Mol	Chain	Analysed	Favoured	Allowed	Outliers	Percentiles	
1	A	494/496 (100%)	477 (97%)	16 (3%)	1 (0%)	52	64

All (1) Ramachandran outliers are listed below:

Mol	Chain	Res	Type
1	A	163	THR

5.3.2 Protein sidechains [i](#)

In the following table, the Percentiles column shows the percent sidechain outliers of the chain as a percentile score with respect to all X-ray entries followed by that with respect to entries of similar resolution.

The Analysed column shows the number of residues for which the sidechain conformation was analysed, and the total number of residues.

Mol	Chain	Analysed	Rotameric	Outliers	Percentiles
1	A	418/418 (100%)	415 (99%)	3 (1%)	88 95

All (3) residues with a non-rotameric sidechain are listed below:

Mol	Chain	Res	Type
1	A	115	CYS
1	A	134	TRP
1	A	478	SER

Some sidechains can be flipped to improve hydrogen bonding and reduce clashes. All (1) such sidechains are listed below:

Mol	Chain	Res	Type
1	A	220	ASN

5.3.3 RNA [i](#)

There are no RNA molecules in this entry.

5.4 Non-standard residues in protein, DNA, RNA chains [i](#)

1 non-standard protein/DNA/RNA residue is modelled in this entry.

In the following table, the Counts columns list the number of bonds (or angles) for which Mogul statistics could be retrieved, the number of bonds (or angles) that are observed in the model and the number of bonds (or angles) that are defined in the chemical component dictionary. The Link column lists molecule types, if any, to which the group is linked. The Z score for a bond length (or angle) is the number of standard deviations the observed value is removed from the expected value. A bond length (or angle) with $|Z| > 2$ is considered an outlier worth inspection. RMSZ is the root-mean-square of all Z scores of the bond lengths (or angles).

Mol	Type	Chain	Res	Link	Bond lengths			Bond angles		
					Counts	RMSZ	# Z > 2	Counts	RMSZ	# Z > 2
1	PCA	A	1	1	7,8,9	1.64	1 (14%)	9,10,12	2.19	6 (66%)

In the following table, the Chirals column lists the number of chiral outliers, the number of chiral centers analysed, the number of these observed in the model and the number defined in the chemical component dictionary. Similar counts are reported in the Torsion and Rings columns. '-' means no outliers of that kind were identified.

Mol	Type	Chain	Res	Link	Chirals	Torsions	Rings
1	PCA	A	1	1	-	0/0/11/13	0/1/1/1

All (1) bond length outliers are listed below:

Mol	Chain	Res	Type	Atoms	Z	Observed(Å)	Ideal(Å)
1	A	1	PCA	CD-N	4.27	1.46	1.33

All (6) bond angle outliers are listed below:

Mol	Chain	Res	Type	Atoms	Z	Observed(°)	Ideal(°)
1	A	1	PCA	CB-CA-C	-3.53	107.56	112.80
1	A	1	PCA	CA-N-CD	-2.73	103.80	113.53
1	A	1	PCA	OE-CD-CG	-2.56	121.78	126.85
1	A	1	PCA	O-C-CA	-2.08	119.99	125.69
1	A	1	PCA	CG-CD-N	2.12	114.71	108.28
1	A	1	PCA	CB-CA-N	2.28	110.26	103.34

There are no chirality outliers.

There are no torsion outliers.

There are no ring outliers.

No monomer is involved in short contacts.

5.5 Carbohydrates [i](#)

There are no carbohydrates in this entry.

5.6 Ligand geometry [i](#)

Of 7 ligands modelled in this entry, 2 are monoatomic - leaving 5 for Mogul analysis.

In the following table, the Counts columns list the number of bonds (or angles) for which Mogul statistics could be retrieved, the number of bonds (or angles) that are observed in the model and the number of bonds (or angles) that are defined in the chemical component dictionary. The Link column lists molecule types, if any, to which the group is linked. The Z score for a bond length (or angle) is the number of standard deviations the observed value is removed from the expected value. A bond length (or angle) with $|Z| > 2$ is considered an outlier worth inspection. RMSZ is the root-mean-square of all Z scores of the bond lengths (or angles).

Mol	Type	Chain	Res	Link	Bond lengths			Bond angles		
					Counts	RMSZ	$\# Z > 2$	Counts	RMSZ	$\# Z > 2$
3	MTT	A	502	-	48,48,48	2.11	19 (39%)	71,71,71	1.18	7 (9%)
3	MTT	A	503	-	48,48,48	2.06	14 (29%)	71,71,71	1.50	10 (14%)
4	CEY	A	504	-	72,72,72	1.93	22 (30%)	107,107,107	1.30	11 (10%)
4	CEY	A	505	-	72,72,72	1.96	30 (41%)	107,107,107	1.23	11 (10%)
5	MAL	A	506	-	24,24,24	1.50	7 (29%)	35,35,35	1.50	5 (14%)

In the following table, the Chirals column lists the number of chiral outliers, the number of chiral centers analysed, the number of these observed in the model and the number defined in the chemical component dictionary. Similar counts are reported in the Torsion and Rings columns. '-' means no outliers of that kind were identified.

Mol	Type	Chain	Res	Link	Chirals	Torsions	Rings
3	MTT	A	502	-	-	0/20/100/100	0/4/4/4
3	MTT	A	503	-	-	0/20/100/100	0/4/4/4
4	CEY	A	504	-	-	0/32/152/152	0/6/6/6
4	CEY	A	505	-	-	0/32/152/152	0/6/6/6
5	MAL	A	506	-	-	0/8/48/48	0/2/2/2

All (92) bond length outliers are listed below:

Mol	Chain	Res	Type	Atoms	Z	Observed(Å)	Ideal(Å)
3	A	502	MTT	C26-C25	-3.24	1.40	1.51
3	A	503	MTT	C26-C25	-3.02	1.41	1.51
3	A	503	MTT	C46-C45	-2.96	1.41	1.51
3	A	502	MTT	C46-C45	-2.95	1.41	1.51
3	A	503	MTT	C16-C15	-2.87	1.41	1.51
3	A	503	MTT	C36-C35	-2.85	1.41	1.51
4	A	505	CEY	C6B-C5B	-2.73	1.42	1.51
3	A	502	MTT	C36-C35	-2.67	1.42	1.51
4	A	505	CEY	C6E-C5E	-2.59	1.42	1.51
3	A	502	MTT	C16-C15	-2.53	1.43	1.51
4	A	504	CEY	C3F-C2F	-2.50	1.45	1.52
4	A	505	CEY	C3D-C2D	-2.46	1.45	1.52

Continued on next page...

Continued from previous page...

Mol	Chain	Res	Type	Atoms	Z	Observed(Å)	Ideal(Å)
4	A	505	CEY	C6C-C5C	-2.44	1.43	1.51
4	A	504	CEY	C6C-C5C	-2.40	1.43	1.51
4	A	505	CEY	C6D-C5D	-2.36	1.43	1.51
5	A	506	MAL	O2-C2	-2.33	1.37	1.43
5	A	506	MAL	O4-C4	-2.29	1.37	1.43
4	A	504	CEY	C6B-C5B	-2.28	1.43	1.51
4	A	504	CEY	C6F-C5F	-2.25	1.44	1.51
4	A	505	CEY	C3F-C2F	-2.24	1.46	1.52
5	A	506	MAL	O3'-C3'	-2.23	1.37	1.43
4	A	504	CEY	C6E-C5E	-2.22	1.44	1.51
4	A	505	CEY	C6F-C5F	-2.20	1.44	1.51
5	A	506	MAL	O3-C3	-2.18	1.37	1.43
4	A	504	CEY	C3D-C2D	-2.16	1.46	1.52
4	A	505	CEY	C3E-C2E	-2.10	1.46	1.52
4	A	505	CEY	O2B-C2B	2.00	1.47	1.43
4	A	504	CEY	O2B-C2B	2.01	1.47	1.43
3	A	502	MTT	O23-C23	2.02	1.47	1.43
4	A	505	CEY	O3D-C3D	2.02	1.47	1.43
4	A	505	CEY	O5B-C1B	2.04	1.47	1.41
3	A	502	MTT	O43-C43	2.04	1.47	1.43
4	A	505	CEY	O3A-C3A	2.05	1.47	1.43
5	A	506	MAL	C4'-C5'	2.08	1.58	1.52
3	A	502	MTT	C14-C15	2.09	1.57	1.53
5	A	506	MAL	C1-C2	2.12	1.58	1.52
4	A	505	CEY	O5E-C1E	2.15	1.47	1.41
3	A	503	MTT	C14-C15	2.16	1.57	1.53
3	A	502	MTT	O35-C31	2.18	1.47	1.41
3	A	502	MTT	O22-C22	2.19	1.48	1.43
4	A	504	CEY	O5C-C1C	2.20	1.47	1.41
3	A	503	MTT	O13-C13	2.20	1.48	1.43
3	A	503	MTT	O12-C12	2.21	1.48	1.43
4	A	504	CEY	O2E-C2E	2.24	1.48	1.43
3	A	502	MTT	O25-C21	2.24	1.47	1.41
4	A	505	CEY	O3C-C3C	2.26	1.48	1.43
4	A	504	CEY	O5D-C1D	2.26	1.47	1.41
4	A	504	CEY	O2D-C2D	2.29	1.48	1.43
4	A	505	CEY	O5A-C5A	2.32	1.50	1.44
4	A	505	CEY	O5A-C1A	2.34	1.47	1.43
4	A	505	CEY	O2F-C2F	2.36	1.48	1.43
4	A	505	CEY	O5F-C1F	2.37	1.47	1.41
4	A	505	CEY	O3B-C3B	2.38	1.48	1.43
3	A	503	MTT	O43-C43	2.40	1.48	1.43

Continued on next page...

Continued from previous page...

Mol	Chain	Res	Type	Atoms	Z	Observed(Å)	Ideal(Å)
4	A	504	CEY	O5F-C1F	2.42	1.48	1.41
4	A	504	CEY	O5B-C1B	2.46	1.48	1.41
3	A	502	MTT	O12-C12	2.47	1.48	1.43
4	A	505	CEY	O4A-C4A	2.50	1.50	1.43
5	A	506	MAL	C3'-C4'	2.57	1.59	1.52
4	A	505	CEY	O2D-C2D	2.57	1.49	1.43
3	A	503	MTT	O15-C11	2.58	1.48	1.41
3	A	502	MTT	O33-C33	2.59	1.49	1.43
4	A	505	CEY	O5C-C1C	2.62	1.48	1.41
3	A	502	MTT	O45-C41	2.63	1.48	1.43
3	A	502	MTT	O15-C11	2.70	1.48	1.41
4	A	504	CEY	O2C-C2C	2.75	1.49	1.43
4	A	505	CEY	O2C-C2C	2.75	1.49	1.43
3	A	502	MTT	O42-C42	2.77	1.49	1.43
4	A	504	CEY	O5E-C1E	2.89	1.49	1.41
3	A	503	MTT	O42-C42	2.90	1.49	1.43
4	A	505	CEY	O5D-C1D	2.97	1.49	1.41
4	A	504	CEY	O3F-C3F	3.09	1.50	1.43
4	A	505	CEY	O3F-C3F	3.23	1.50	1.43
4	A	504	CEY	O3C-C3C	3.25	1.50	1.43
4	A	505	CEY	O5F-C5F	3.64	1.53	1.44
4	A	505	CEY	O5E-C5E	3.81	1.53	1.44
4	A	504	CEY	O5F-C5F	3.94	1.54	1.44
3	A	503	MTT	O45-C45	3.96	1.54	1.44
4	A	505	CEY	O5B-C5B	4.08	1.54	1.44
3	A	503	MTT	O35-C35	4.08	1.54	1.44
4	A	504	CEY	O5B-C5B	4.24	1.55	1.44
4	A	504	CEY	O5D-C5D	4.28	1.55	1.44
4	A	505	CEY	O5D-C5D	4.37	1.55	1.44
3	A	502	MTT	O45-C45	4.39	1.55	1.44
3	A	502	MTT	O25-C25	4.50	1.55	1.44
4	A	504	CEY	O5E-C5E	4.51	1.55	1.44
3	A	503	MTT	O15-C15	4.52	1.55	1.44
3	A	502	MTT	O15-C15	4.68	1.56	1.44
4	A	504	CEY	O5C-C5C	4.76	1.56	1.44
3	A	502	MTT	O35-C35	4.80	1.56	1.44
4	A	505	CEY	O5C-C5C	4.83	1.56	1.44
3	A	503	MTT	O25-C25	5.21	1.57	1.44

All (44) bond angle outliers are listed below:

Continued on next page...

Continued from previous page...

Mol	Chain	Res	Type	Atoms	Z	Observed(°)	Ideal(°)
-----	-------	-----	------	-------	---	-------------	----------

Mol	Chain	Res	Type	Atoms	Z	Observed(°)	Ideal(°)
5	A	506	MAL	C1'-C2'-C3'	-3.77	104.50	110.68
3	A	502	MTT	C11-O24-C24	-3.60	108.43	118.00
4	A	504	CEY	C1D-O4C-C4C	-3.21	109.45	118.00
3	A	503	MTT	C11-O15-C15	-3.07	107.72	113.74
4	A	504	CEY	C1B-O4A-C4A	-3.05	109.88	118.00
4	A	504	CEY	O2F-C2F-C3F	-3.03	103.52	110.36
3	A	503	MTT	C21-O34-C34	-2.92	110.24	118.00
4	A	505	CEY	C1D-O4C-C4C	-2.90	110.28	118.00
4	A	505	CEY	C1E-O4D-C4D	-2.90	110.28	118.00
4	A	505	CEY	C1E-O5E-C5E	-2.83	108.19	113.74
4	A	504	CEY	C1C-O4B-C4B	-2.83	110.48	118.00
3	A	503	MTT	O15-C11-C12	-2.73	104.61	110.28
5	A	506	MAL	O2-C2-C3	-2.36	105.03	110.36
4	A	504	CEY	C3F-C4F-C5F	-2.36	106.02	110.23
3	A	502	MTT	C31-O44-C44	-2.32	111.85	118.00
4	A	505	CEY	O6B-C6B-C5B	-2.19	103.98	111.30
4	A	505	CEY	O4D-C1E-O5E	-2.19	104.99	110.69
3	A	502	MTT	C21-O34-C34	-2.05	112.55	118.00
4	A	505	CEY	C1B-C2B-C3B	2.00	113.95	109.98
4	A	504	CEY	O5E-C5E-C6E	2.01	111.60	106.38
4	A	504	CEY	C1B-C2B-C3B	2.12	114.19	109.98
3	A	502	MTT	O24-C24-C23	2.16	112.82	107.18
5	A	506	MAL	O5-C5-C6	2.34	112.45	106.38
4	A	505	CEY	C2B-C3B-C4B	2.39	114.91	109.63
3	A	503	MTT	O44-C44-C43	2.41	113.46	107.18
3	A	502	MTT	O12-C12-C13	2.42	115.81	110.36
4	A	504	CEY	C1F-C2F-C3F	2.42	114.78	109.98
4	A	505	CEY	O5A-C1A-C2A	2.56	114.48	110.00
3	A	503	MTT	C22-C23-C24	2.56	115.28	109.63
5	A	506	MAL	O2'-C2'-C1'	2.69	115.63	109.74
4	A	505	CEY	C2A-C3A-C4A	2.74	115.67	109.63
4	A	504	CEY	O5F-C5F-C6F	2.75	113.51	106.38
3	A	503	MTT	C41-C42-C43	2.85	115.36	110.68
3	A	502	MTT	C11-O15-C15	2.94	119.52	113.74
4	A	505	CEY	O5A-C5A-C4A	2.95	116.06	109.78
3	A	503	MTT	C41-O45-C45	3.01	119.30	113.54
4	A	504	CEY	O5C-C5C-C4C	3.11	116.41	109.78
5	A	506	MAL	C1'-O5'-C5'	3.20	119.66	113.54
3	A	502	MTT	O24-C11-C12	3.32	116.37	108.12
4	A	505	CEY	C1A-C2A-C3A	3.45	116.34	110.68
4	A	504	CEY	C3C-C4C-C5C	3.59	119.06	110.85

Continued on next page...

Continued from previous page...

Mol	Chain	Res	Type	Atoms	Z	Observed(°)	Ideal(°)
3	A	503	MTT	O24-C11-C12	3.66	117.22	108.12
3	A	503	MTT	O45-C41-C42	3.80	116.66	110.00
3	A	503	MTT	C13-C14-C15	4.04	117.43	110.23

There are no chirality outliers.

There are no torsion outliers.

There are no ring outliers.

3 monomers are involved in 4 short contacts:

Mol	Chain	Res	Type	Clashes	Symm-Clashes
3	A	503	MTT	1	0
4	A	504	CEY	2	0
4	A	505	CEY	1	0

5.7 Other polymers [i](#)

There are no such residues in this entry.

5.8 Polymer linkage issues [i](#)

There are no chain breaks in this entry.

6 Fit of model and data [i](#)

6.1 Protein, DNA and RNA chains [i](#)

In the following table, the column labelled ‘#RSRZ> 2’ contains the number (and percentage) of RSRZ outliers, followed by percent RSRZ outliers for the chain as percentile scores relative to all X-ray entries and entries of similar resolution. The OWAB column contains the minimum, median, 95th percentile and maximum values of the occupancy-weighted average B-factor per residue. The column labelled ‘Q< 0.9’ lists the number of (and percentage) of residues with an average occupancy less than 0.9.

Mol	Chain	Analysed	<RSRZ>	#RSRZ>2	OWAB(Å ²)	Q<0.9
1	A	495/496 (99%)	-0.64	3 (0%) 90 93	13, 21, 38, 59	0

All (3) RSRZ outliers are listed below:

Mol	Chain	Res	Type	RSRZ
1	A	350	ASN	3.4
1	A	308	GLY	3.1
1	A	351	GLY	2.4

6.2 Non-standard residues in protein, DNA, RNA chains [i](#)

In the following table, the Atoms column lists the number of modelled atoms in the group and the number defined in the chemical component dictionary. LLDF column lists the quality of electron density of the group with respect to its neighbouring residues in protein, DNA or RNA chains. The B-factors column lists the minimum, median, 95th percentile and maximum values of B factors of atoms in the group. The column labelled ‘Q< 0.9’ lists the number of atoms with occupancy less than 0.9.

Mol	Type	Chain	Res	Atoms	RSCC	RSR	LLDF	B-factors(Å ²)	Q<0.9
1	PCA	A	1	8/9	0.98	0.11	-	17,19,23,23	0

6.3 Carbohydrates [i](#)

There are no carbohydrates in this entry.

6.4 Ligands [i](#)

In the following table, the Atoms column lists the number of modelled atoms in the group and the number defined in the chemical component dictionary. LLDF column lists the quality of electron density of the group with respect to its neighbouring residues in protein, DNA or RNA chains.

The B-factors column lists the minimum, median, 95th percentile and maximum values of B factors of atoms in the group. The column labelled 'Q< 0.9' lists the number of atoms with occupancy less than 0.9.

Mol	Type	Chain	Res	Atoms	RSCC	RSR	LLDF	B-factors(Å ²)	Q<0.9
3	MTT	A	502	45/45	0.90	0.17	5.88	18,28,58,61	45
5	MAL	A	506	23/23	0.84	0.30	3.19	36,41,65,70	0
4	CEY	A	505	67/67	0.78	0.25	2.75	31,56,72,80	0
3	MTT	A	503	45/45	0.94	0.13	2.74	17,24,59,70	0
2	CL	A	501	1/1	1.00	0.15	2.61	19,19,19,19	0
4	CEY	A	504	67/67	0.93	0.12	0.27	16,30,42,49	0
6	CA	A	507	1/1	0.99	0.03	-2.91	19,19,19,19	0

6.5 Other polymers [i](#)

There are no such residues in this entry.