



# Full wwPDB X-ray Structure Validation Report ⓘ

Dec 19, 2016 – 07:24 PM EST

PDB ID : 5TF9  
Title : Crystal structure of WNK1 in complex with Mn2+AMPPNP and WNK476  
Authors : Xie, X.; Gunawan, J.  
Deposited on : 2016-09-24  
Resolution : 2.50 Å(reported)

This is a Full wwPDB X-ray Structure Validation Report for a publicly released PDB entry.

We welcome your comments at [validation@mail.wwpdb.org](mailto:validation@mail.wwpdb.org)

A user guide is available at

<http://wwpdb.org/validation/2016/XrayValidationReportHelp>

with specific help available everywhere you see the ⓘ symbol.

---

The following versions of software and data (see [references ⓘ](#)) were used in the production of this report:

MolProbity : 4.02b-467  
Mogul : 1.7.1 (RC1), CSD as537be (2016)  
Xtriage (Phenix) : 1.9-1692  
EDS : rb-20028442  
Percentile statistics : 20151230.v01 (using entries in the PDB archive December 30th 2015)  
Refmac : 5.8.0135  
CCP4 : 6.5.0  
Ideal geometry (proteins) : Engh & Huber (2001)  
Ideal geometry (DNA, RNA) : Parkinson et al. (1996)  
Validation Pipeline (wwPDB-VP) : rb-20028442

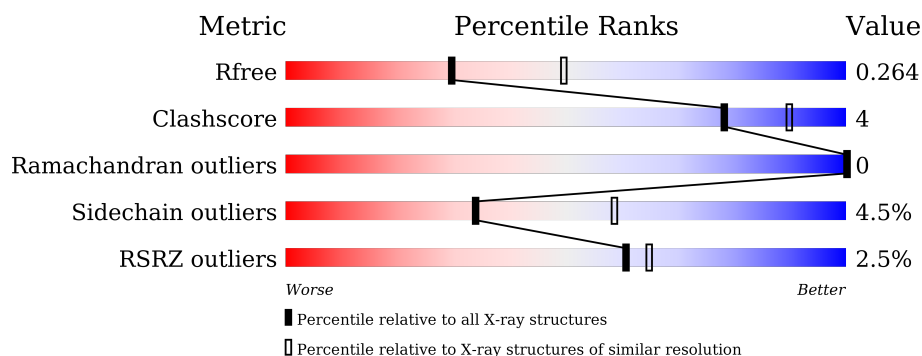
# 1 Overall quality at a glance

The following experimental techniques were used to determine the structure:

*X-RAY DIFFRACTION*

The reported resolution of this entry is 2.50 Å.

Percentile scores (ranging between 0-100) for global validation metrics of the entry are shown in the following graphic. The table shows the number of entries on which the scores are based.



Metric	Whole archive (#Entries)	Similar resolution (#Entries, resolution range(Å))
$R_{free}$	91344	3553 (2.50-2.50)
Clashscore	102246	4242 (2.50-2.50)
Ramachandran outliers	100387	4156 (2.50-2.50)
Sidechain outliers	100360	4158 (2.50-2.50)
RSRZ outliers	91569	3562 (2.50-2.50)

The table below summarises the geometric issues observed across the polymeric chains and their fit to the electron density. The red, orange, yellow and green segments on the lower bar indicate the fraction of residues that contain outliers for  $\geq 3$ , 2, 1 and 0 types of geometric quality criteria. A grey segment represents the fraction of residues that are not modelled. The numeric value for each fraction is indicated below the corresponding segment, with a dot representing fractions  $\leq 5\%$ . The upper red bar (where present) indicates the fraction of residues that have poor fit to the electron density. The numeric value is given above the bar.

Mol	Chain	Length	Quality of chain
1	A	279	<div> <div>3%</div> <div> <div></div> <div>82%</div> <div>10%</div> <div>• 6%</div> </div> </div>
1	B	279	<div> <div>%</div> <div> <div></div> <div>84%</div> <div>10%</div> <div>• 5%</div> </div> </div>

## 2 Entry composition

There are 6 unique types of molecules in this entry. The entry contains 4459 atoms, of which 0 are hydrogens and 0 are deuteriums.

In the tables below, the ZeroOcc column contains the number of atoms modelled with zero occupancy, the AltConf column contains the number of residues with at least one atom in alternate conformation and the Trace column contains the number of residues modelled with at most 2 atoms.

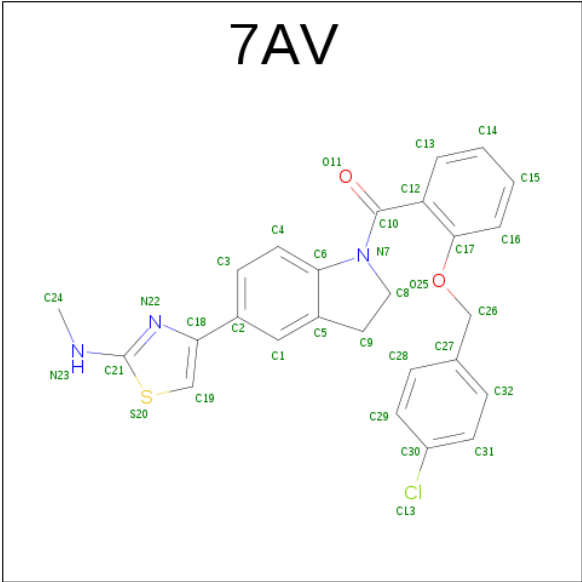
- Molecule 1 is a protein called Serine/threonine-protein kinase WNK1.

Mol	Chain	Residues	Atoms					ZeroOcc	AltConf	Trace
1	A	262	Total	C	N	O	S	0	0	0
			2104	1342	356	390	16			
1	B	266	Total	C	N	O	S	0	0	0
			2134	1362	362	394	16			

There are 10 discrepancies between the modelled and reference sequences:

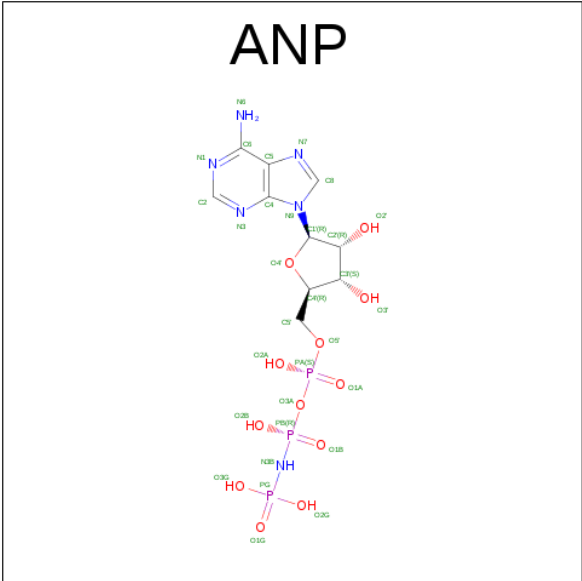
Chain	Residue	Modelled	Actual	Comment	Reference
A	205	GLY	-	expression tag	UNP Q9H4A3
A	378	ASP	SER	conflict	UNP Q9H4A3
A	396	ALA	GLU	conflict	UNP Q9H4A3
A	397	ALA	GLU	conflict	UNP Q9H4A3
A	398	ALA	LYS	conflict	UNP Q9H4A3
B	205	GLY	-	expression tag	UNP Q9H4A3
B	378	ASP	SER	conflict	UNP Q9H4A3
B	396	ALA	GLU	conflict	UNP Q9H4A3
B	397	ALA	GLU	conflict	UNP Q9H4A3
B	398	ALA	LYS	conflict	UNP Q9H4A3

- Molecule 2 is {2-[(4-chlorophenyl)methoxy]phenyl}{5-[2-(methylamino)-1,3-thiazol-4-yl]-2,3-dihydro-1H-indol-1-yl}methanone (three-letter code: 7AV) (formula: C<sub>26</sub>H<sub>22</sub>ClN<sub>3</sub>O<sub>2</sub>S).



Mol	Chain	Residues	Atoms						ZeroOcc	AltConf
2	A	1	Total	C	Cl	N	O	S	0	0
			33	26	1	3	2	1		
2	B	1	Total	C	Cl	N	O	S	0	0
			33	26	1	3	2	1		

- Molecule 3 is PHOSPHOAMINOPHOSPHONIC ACID-ADENYLATE ESTER (three-letter code: ANP) (formula: C<sub>10</sub>H<sub>17</sub>N<sub>6</sub>O<sub>12</sub>P<sub>3</sub>).



Mol	Chain	Residues	Atoms					ZeroOcc	AltConf
3	A	1	Total	C	N	O	P	0	0
			31	10	6	12	3		

Continued on next page...

*Continued from previous page...*

Mol	Chain	Residues	Atoms					ZeroOcc	AltConf
3	B	1	Total	C	N	O	P	0	0
			31	10	6	12	3		

- Molecule 4 is MANGANESE (II) ION (three-letter code: MN) (formula: Mn).

Mol	Chain	Residues	Atoms		ZeroOcc	AltConf
4	B	1	Total	Mn	0	0
			1	1		
4	A	1	Total	Mn	0	0
			1	1		

- Molecule 5 is CALCIUM ION (three-letter code: CA) (formula: Ca).

Mol	Chain	Residues	Atoms		ZeroOcc	AltConf
5	A	1	Total	Ca	0	0
			1	1		

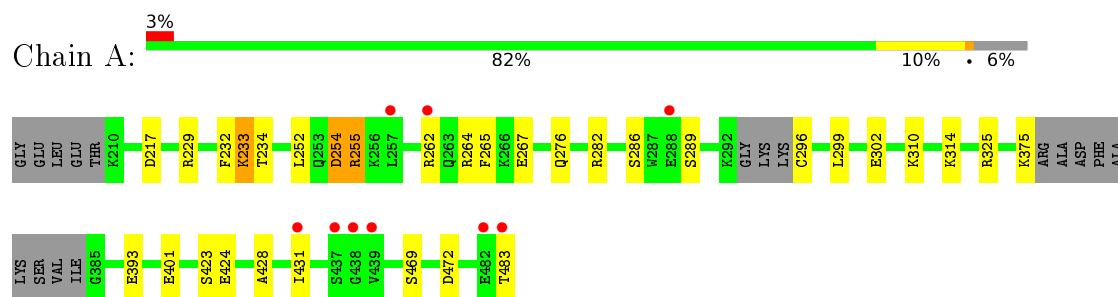
- Molecule 6 is water.

Mol	Chain	Residues	Atoms		ZeroOcc	AltConf
6	A	41	Total	O	0	0
			41	41		
6	B	49	Total	O	0	0
			49	49		

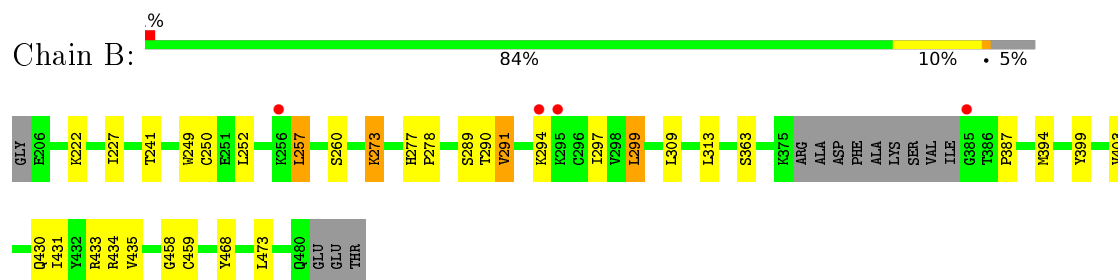
### 3 Residue-property plots [i](#)

These plots are drawn for all protein, RNA and DNA chains in the entry. The first graphic for a chain summarises the proportions of errors displayed in the second graphic. The second graphic shows the sequence view annotated by issues in geometry and electron density. Residues are color-coded according to the number of geometric quality criteria for which they contain at least one outlier: green = 0, yellow = 1, orange = 2 and red = 3 or more. A red dot above a residue indicates a poor fit to the electron density ( $RSRZ > 2$ ). Stretches of 2 or more consecutive residues without any outlier are shown as a green connector. Residues present in the sample, but not in the model, are shown in grey.

- Molecule 1: Serine/threonine-protein kinase WNK1



- Molecule 1: Serine/threonine-protein kinase WNK1



## 4 Data and refinement statistics

Property	Value	Source
Space group	C 1 2 1	Depositor
Cell constants a, b, c, $\alpha$ , $\beta$ , $\gamma$	83.06 Å   104.48 Å   69.60 Å 90.00°   116.50°   90.00°	Depositor
Resolution (Å)	40.03 – 2.50 40.96 – 2.48	Depositor EDS
% Data completeness (in resolution range)	99.9 (40.03-2.50) 99.4 (40.96-2.48)	Depositor EDS
$R_{merge}$	0.09	Depositor
$R_{sym}$	(Not available)	Depositor
$\langle I/\sigma(I) \rangle$ <sup>1</sup>	2.44 (at 2.48 Å)	Xtriage
Refinement program	PHENIX	Depositor
R, $R_{free}$	0.195   ,   0.266 0.194   ,   0.264	Depositor DCC
$R_{free}$ test set	872 reflections (4.73%)	DCC
Wilson B-factor (Å <sup>2</sup> )	43.1	Xtriage
Anisotropy	0.299	Xtriage
Bulk solvent $k_{sol}$ (e/Å <sup>3</sup> ), $B_{sol}$ (Å <sup>2</sup> )	0.32 , 40.8	EDS
L-test for twinning <sup>2</sup>	$\langle  L  \rangle = 0.50$ , $\langle L^2 \rangle = 0.33$	Xtriage
Estimated twinning fraction	0.012 for -1/2*h+1/2*k-l, 1/2*h-1/2*k-l, -1/2*h-1/2*k 0.000 for -1/2*h-1/2*k-l, -1/2*h-1/2*k+l, -1/2*h+1/2*k	Xtriage
$F_o, F_c$ correlation	0.95	EDS
Total number of atoms	4459	wwPDB-VP
Average B, all atoms (Å <sup>2</sup> )	46.0	wwPDB-VP

Xtriage's analysis on translational NCS is as follows: *The analyses of the Patterson function reveals a significant off-origin peak that is 38.99 % of the origin peak, indicating pseudo translational symmetry. The chance of finding a peak of this or larger height randomly in a structure without pseudo translational symmetry is equal to 3.3930e-04. The detected translational NCS is most likely also responsible for the elevated intensity ratio.*

<sup>1</sup> Intensities estimated from amplitudes.

<sup>2</sup> Theoretical values of  $\langle |L| \rangle$ ,  $\langle L^2 \rangle$  for acentric reflections are 0.5, 0.333 respectively for untwinned datasets, and 0.375, 0.2 for perfectly twinned datasets.

## 5 Model quality

### 5.1 Standard geometry

Bond lengths and bond angles in the following residue types are not validated in this section: 7AV, CA, MN, ANP

The Z score for a bond length (or angle) is the number of standard deviations the observed value is removed from the expected value. A bond length (or angle) with  $|Z| > 5$  is considered an outlier worth inspection. RMSZ is the root-mean-square of all Z scores of the bond lengths (or angles).

Mol	Chain	Bond lengths		Bond angles	
		RMSZ	$\# Z  > 5$	RMSZ	$\# Z  > 5$
1	A	0.41	1/2143 (0.0%)	0.55	0/2881
1	B	0.48	0/2174	0.63	2/2922 (0.1%)
All	All	0.44	1/4317 (0.0%)	0.59	2/5803 (0.0%)

Chiral center outliers are detected by calculating the chiral volume of a chiral center and verifying if the center is modelled as a planar moiety or with the opposite hand. A planarity outlier is detected by checking planarity of atoms in a peptide group, atoms in a mainchain group or atoms of a sidechain that are expected to be planar.

Mol	Chain	#Chirality outliers	#Planarity outliers
1	B	0	1

All (1) bond length outliers are listed below:

Mol	Chain	Res	Type	Atoms	Z	Observed(Å)	Ideal(Å)
1	A	262	ARG	CD-NE	5.31	1.55	1.46

All (2) bond angle outliers are listed below:

Mol	Chain	Res	Type	Atoms	Z	Observed(°)	Ideal(°)
1	B	257	LEU	CB-CG-CD2	-12.76	89.31	111.00
1	B	257	LEU	CB-CG-CD1	5.14	119.74	111.00

There are no chirality outliers.

All (1) planarity outliers are listed below:

Mol	Chain	Res	Type	Group
1	B	291	VAL	Peptide



## 5.2 Too-close contacts ⓘ

In the following table, the Non-H and H(model) columns list the number of non-hydrogen atoms and hydrogen atoms in the chain respectively. The H(added) column lists the number of hydrogen atoms added and optimized by MolProbity. The Clashes column lists the number of clashes within the asymmetric unit, whereas Symm-Clashes lists symmetry related clashes.

Mol	Chain	Non-H	H(model)	H(added)	Clashes	Symm-Clashes
1	A	2104	0	2124	17	0
1	B	2134	0	2165	17	0
2	A	33	0	0	1	0
2	B	33	0	0	0	0
3	A	31	0	13	1	0
3	B	31	0	13	0	0
4	A	1	0	0	0	0
4	B	1	0	0	0	0
5	A	1	0	0	0	0
6	A	41	0	0	0	0
6	B	49	0	0	0	0
All	All	4459	0	4315	31	0

The all-atom clashscore is defined as the number of clashes found per 1000 atoms (including hydrogen atoms). The all-atom clashscore for this structure is 4.

All (31) close contacts within the same asymmetric unit are listed below, sorted by their clash magnitude.

Atom-1	Atom-2	Interatomic distance (Å)	Clash overlap (Å)
1:B:252:LEU:HB2	1:B:297:ILE:HG13	1.81	0.62
1:A:393:GLU:HG3	1:B:399:TYR:HB3	1.82	0.60
1:A:469:SER:HB3	1:A:472:ASP:OD1	2.02	0.59
1:A:424:GLU:N	1:A:424:GLU:OE2	2.39	0.52
1:A:232:PHE:CD1	1:A:232:PHE:N	2.77	0.52
1:B:459:CYS:SG	1:B:473:LEU:HD11	2.50	0.52
1:A:267:GLU:OE1	1:B:260:SER:OG	2.19	0.51
1:A:325:ARG:NH2	1:A:483:THR:OG1	2.44	0.51
1:A:254:ASP:OD1	1:A:254:ASP:N	2.33	0.50
1:A:282:ARG:HB3	1:A:302:GLU:HB2	1.93	0.50
1:B:431:ILE:O	1:B:435:VAL:HG23	2.12	0.49
1:B:222:LYS:HB2	1:B:249:TRP:CD2	2.48	0.48
1:A:393:GLU:HG3	1:B:399:TYR:CB	2.44	0.48
1:B:250:CYS:HB2	1:B:299:LEU:HG	1.95	0.48
1:B:257:LEU:HD23	1:B:257:LEU:HA	1.61	0.47
1:B:273:LYS:O	1:B:273:LYS:HG2	2.14	0.46

*Continued on next page...*

Continued from previous page...

Atom-1	Atom-2	Interatomic distance (Å)	Clash overlap (Å)
1:B:458:GLY:HA3	1:B:468:TYR:CE2	2.51	0.45
1:A:310:LYS:O	1:A:314:LYS:HG3	2.18	0.43
1:A:286:SER:OG	1:A:299:LEU:HD12	2.19	0.43
1:A:233:LYS:HD2	3:A:502:ANP:O2A	2.19	0.43
1:A:428:ALA:HA	1:A:431:ILE:HD12	2.01	0.43
1:B:277:HIS:CG	1:B:278:PRO:HD2	2.53	0.43
1:B:222:LYS:HD2	1:B:249:TRP:NE1	2.35	0.42
1:A:252:LEU:HD21	2:A:501:7AV:C8	2.50	0.42
1:B:309:LEU:O	1:B:313:LEU:HG	2.20	0.42
1:A:264:ARG:O	1:A:267:GLU:HG2	2.20	0.41
1:A:252:LEU:HD23	1:A:255:ARG:NH2	2.35	0.41
1:B:289:SER:OG	1:B:290:THR:N	2.54	0.41
1:A:252:LEU:O	1:A:296:CYS:HB2	2.21	0.41
1:B:430:GLN:O	1:B:434:ARG:HG3	2.20	0.41
1:B:387:PRO:HG2	1:B:394:MET:HE1	2.03	0.40

There are no symmetry-related clashes.

## 5.3 Torsion angles [i](#)

### 5.3.1 Protein backbone [i](#)

In the following table, the Percentiles column shows the percent Ramachandran outliers of the chain as a percentile score with respect to all X-ray entries followed by that with respect to entries of similar resolution.

The Analysed column shows the number of residues for which the backbone conformation was analysed, and the total number of residues.

Mol	Chain	Analysed	Favoured	Allowed	Outliers	Percentiles	
1	A	256/279 (92%)	249 (97%)	7 (3%)	0	100	100
1	B	262/279 (94%)	249 (95%)	13 (5%)	0	100	100
All	All	518/558 (93%)	498 (96%)	20 (4%)	0	100	100

There are no Ramachandran outliers to report.

### 5.3.2 Protein sidechains [i](#)

In the following table, the Percentiles column shows the percent sidechain outliers of the chain as a percentile score with respect to all X-ray entries followed by that with respect to entries of similar

resolution.

The Analysed column shows the number of residues for which the sidechain conformation was analysed, and the total number of residues.

Mol	Chain	Analysed	Rotameric	Outliers	Percentiles	
1	A	231/244 (95%)	219 (95%)	12 (5%)	29	51
1	B	234/244 (96%)	225 (96%)	9 (4%)	40	67
All	All	465/488 (95%)	444 (96%)	21 (4%)	34	59

All (21) residues with a non-rotameric sidechain are listed below:

Mol	Chain	Res	Type
1	A	217	ASP
1	A	229	ARG
1	A	233	LYS
1	A	234	THR
1	A	254	ASP
1	A	255	ARG
1	A	265	PHE
1	A	276	GLN
1	A	289	SER
1	A	375	LYS
1	A	401	GLU
1	A	423	SER
1	B	227	ILE
1	B	241	THR
1	B	273	LYS
1	B	291	VAL
1	B	294	LYS
1	B	299	LEU
1	B	363	SER
1	B	403	VAL
1	B	433	ARG

Some sidechains can be flipped to improve hydrogen bonding and reduce clashes. There are no such sidechains identified.

### 5.3.3 RNA ⓘ

There are no RNA molecules in this entry.

## 5.4 Non-standard residues in protein, DNA, RNA chains ⓘ

There are no non-standard protein/DNA/RNA residues in this entry.

## 5.5 Carbohydrates ⓘ

There are no carbohydrates in this entry.

## 5.6 Ligand geometry ⓘ

Of 7 ligands modelled in this entry, 3 are monoatomic - leaving 4 for Mogul analysis.

In the following table, the Counts columns list the number of bonds (or angles) for which Mogul statistics could be retrieved, the number of bonds (or angles) that are observed in the model and the number of bonds (or angles) that are defined in the chemical component dictionary. The Link column lists molecule types, if any, to which the group is linked. The Z score for a bond length (or angle) is the number of standard deviations the observed value is removed from the expected value. A bond length (or angle) with  $|Z| > 2$  is considered an outlier worth inspection. RMSZ is the root-mean-square of all Z scores of the bond lengths (or angles).

Mol	Type	Chain	Res	Link	Bond lengths			Bond angles		
					Counts	RMSZ	# $ Z  > 2$	Counts	RMSZ	# $ Z  > 2$
2	7AV	A	501	-	34,37,37	1.22	4 (11%)	41,52,52	1.54	9 (21%)
3	ANP	A	502	4	29,33,33	1.33	4 (13%)	26,52,52	0.89	1 (3%)
2	7AV	B	501	-	34,37,37	1.19	4 (11%)	41,52,52	1.54	8 (19%)
3	ANP	B	502	4	29,33,33	2.13	5 (17%)	26,52,52	0.90	1 (3%)

In the following table, the Chirals column lists the number of chiral outliers, the number of chiral centers analysed, the number of these observed in the model and the number defined in the chemical component dictionary. Similar counts are reported in the Torsion and Rings columns. '-' means no outliers of that kind were identified.

Mol	Type	Chain	Res	Link	Chirals	Torsions	Rings
2	7AV	A	501	-	-	0/17/28/28	0/5/5/5
3	ANP	A	502	4	-	0/13/38/38	0/3/3/3
2	7AV	B	501	-	-	0/17/28/28	0/5/5/5
3	ANP	B	502	4	-	0/13/38/38	0/3/3/3

All (17) bond length outliers are listed below:

Mol	Chain	Res	Type	Atoms	Z	Observed(Å)	Ideal(Å)
3	B	502	ANP	PB-O2B	-2.53	1.49	1.56
2	B	501	7AV	C21-N23	-2.48	1.31	1.35

*Continued on next page...*

*Continued from previous page...*

Mol	Chain	Res	Type	Atoms	Z	Observed(Å)	Ideal(Å)
2	A	501	7AV	C21-N23	-2.28	1.31	1.35
3	B	502	ANP	PB-N3B	2.07	1.68	1.63
3	A	502	ANP	PB-N3B	2.11	1.69	1.63
2	B	501	7AV	C18-N22	2.27	1.44	1.37
2	A	501	7AV	C8-C9	2.29	1.57	1.53
2	A	501	7AV	C18-N22	2.39	1.45	1.37
2	B	501	7AV	C8-C9	2.47	1.57	1.53
3	B	502	ANP	PG-N3B	2.74	1.70	1.63
3	A	502	ANP	PG-N3B	2.75	1.70	1.63
2	B	501	7AV	C19-S20	2.98	1.75	1.70
2	A	501	7AV	C19-S20	3.06	1.75	1.70
3	A	502	ANP	PB-O1B	3.69	1.50	1.46
3	A	502	ANP	PG-O1G	3.77	1.50	1.46
3	B	502	ANP	PG-O1G	3.91	1.50	1.46
3	B	502	ANP	PB-O1B	9.28	1.56	1.46

All (19) bond angle outliers are listed below:

Mol	Chain	Res	Type	Atoms	Z	Observed(°)	Ideal(°)
2	B	501	7AV	C9-C8-N7	-4.01	101.12	104.87
2	A	501	7AV	C9-C8-N7	-3.13	101.94	104.87
2	B	501	7AV	C8-N7-C6	-2.87	107.54	109.40
2	B	501	7AV	O11-C10-C12	-2.82	114.40	120.13
2	B	501	7AV	C9-C5-C6	-2.77	107.14	109.74
2	B	501	7AV	C2-C1-C5	-2.52	118.06	121.92
2	A	501	7AV	O11-C10-C12	-2.50	115.05	120.13
2	A	501	7AV	C9-C5-C6	-2.49	107.41	109.74
2	A	501	7AV	C8-N7-C6	-2.34	107.89	109.40
2	A	501	7AV	C2-C1-C5	-2.30	118.39	121.92
2	A	501	7AV	C26-O25-C17	2.02	121.53	117.83
2	A	501	7AV	C2-C18-N22	2.17	123.54	120.58
3	A	502	ANP	O3A-PB-N3B	2.29	112.38	106.07
3	B	502	ANP	O3A-PB-N3B	2.47	112.86	106.07
2	B	501	7AV	C26-O25-C17	2.53	122.48	117.83
2	B	501	7AV	C5-C6-N7	2.71	111.07	109.48
2	A	501	7AV	C5-C6-N7	2.90	111.18	109.48
2	B	501	7AV	C1-C5-C6	3.93	121.83	120.48
2	A	501	7AV	C1-C5-C6	4.72	122.10	120.48

There are no chirality outliers.

There are no torsion outliers.

There are no ring outliers.

2 monomers are involved in 2 short contacts:

Mol	Chain	Res	Type	Clashes	Symm-Clashes
2	A	501	7AV	1	0
3	A	502	ANP	1	0

## 5.7 Other polymers [i](#)

There are no such residues in this entry.

## 5.8 Polymer linkage issues [i](#)

There are no chain breaks in this entry.

## 6 Fit of model and data [i](#)

### 6.1 Protein, DNA and RNA chains [i](#)

In the following table, the column labelled ‘#RSRZ> 2’ contains the number (and percentage) of RSRZ outliers, followed by percent RSRZ outliers for the chain as percentile scores relative to all X-ray entries and entries of similar resolution. The OWAB column contains the minimum, median, 95<sup>th</sup> percentile and maximum values of the occupancy-weighted average B-factor per residue. The column labelled ‘Q< 0.9’ lists the number of (and percentage) of residues with an average occupancy less than 0.9.

Mol	Chain	Analysed	<RSRZ>	#RSRZ>2	OWAB(Å <sup>2</sup> )	Q<0.9
1	A	262/279 (93%)	-0.11	9 (3%) 49 54	26, 44, 73, 94	0
1	B	266/279 (95%)	-0.24	4 (1%) 76 79	25, 42, 71, 94	0
All	All	528/558 (94%)	-0.17	13 (2%) 61 65	25, 43, 72, 94	0

All (13) RSRZ outliers are listed below:

Mol	Chain	Res	Type	RSRZ
1	A	437	SER	7.2
1	A	262	ARG	5.4
1	A	257	LEU	4.7
1	A	438	GLY	3.8
1	A	288	GLU	3.6
1	A	439	VAL	2.8
1	B	295	LYS	2.7
1	B	385	GLY	2.6
1	B	256	LYS	2.6
1	A	431	ILE	2.4
1	A	483	THR	2.2
1	A	482	GLU	2.1
1	B	294	LYS	2.0

### 6.2 Non-standard residues in protein, DNA, RNA chains [i](#)

There are no non-standard protein/DNA/RNA residues in this entry.

### 6.3 Carbohydrates [i](#)

There are no carbohydrates in this entry.

## 6.4 Ligands [i](#)

In the following table, the Atoms column lists the number of modelled atoms in the group and the number defined in the chemical component dictionary. LLDF column lists the quality of electron density of the group with respect to its neighbouring residues in protein, DNA or RNA chains. The B-factors column lists the minimum, median, 95<sup>th</sup> percentile and maximum values of B factors of atoms in the group. The column labelled 'Q< 0.9' lists the number of atoms with occupancy less than 0.9.

Mol	Type	Chain	Res	Atoms	RSCC	RSR	LLDF	B-factors(Å <sup>2</sup> )	Q<0.9
2	7AV	A	501	33/33	0.97	0.14	-0.36	32,37,41,45	0
3	ANP	A	502	31/31	0.92	0.12	-0.45	37,59,85,88	0
2	7AV	B	501	33/33	0.97	0.12	-0.94	27,32,35,53	0
3	ANP	B	502	31/31	0.94	0.12	-1.09	51,71,80,84	0
4	MN	B	503	1/1	0.97	0.05	-	73,73,73,73	0
4	MN	A	503	1/1	0.89	0.09	-	70,70,70,70	0
5	CA	A	504	1/1	0.86	0.10	-	75,75,75,75	0

## 6.5 Other polymers [i](#)

There are no such residues in this entry.