



Full wwPDB X-ray Structure Validation Report ⓘ

Oct 5, 2016 – 11:45 AM EDT

PDB ID : 5TFR
Title : Crystal structure of Zika Virus NS5 protein
Authors : Longenecker, K.L.; Upadhyay, A.K.
Deposited on : 2016-09-26
Resolution : 3.05 Å(reported)

This is a Full wwPDB X-ray Structure Validation Report for a publicly released PDB entry.

We welcome your comments at validation@mail.wwpdb.org

A user guide is available at

<http://wwpdb.org/validation/2016/XrayValidationReportHelp>

with specific help available everywhere you see the ⓘ symbol.

The following versions of software and data (see [references ⓘ](#)) were used in the production of this report:

MolProbity : 4.02b-467
Mogul : 1.7.1 (RC1), CSD as537be (2016)
Xtriage (Phenix) : 1.9-1692
EDS : rb-20027939
Percentile statistics : 20151230.v01 (using entries in the PDB archive December 30th 2015)
Refmac : 5.8.0135
CCP4 : 6.5.0
Ideal geometry (proteins) : Engh & Huber (2001)
Ideal geometry (DNA, RNA) : Parkinson et al. (1996)
Validation Pipeline (wwPDB-VP) : rb-20027939

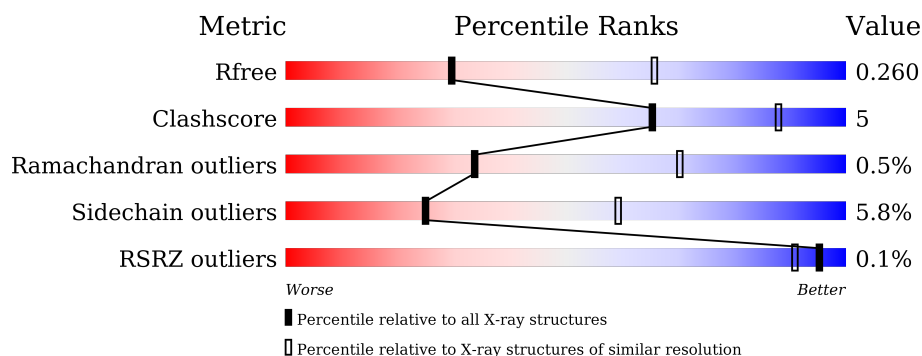
1 Overall quality at a glance

The following experimental techniques were used to determine the structure:

X-RAY DIFFRACTION

The reported resolution of this entry is 3.05 Å.

Percentile scores (ranging between 0-100) for global validation metrics of the entry are shown in the following graphic. The table shows the number of entries on which the scores are based.



Metric	Whole archive (#Entries)	Similar resolution (#Entries, resolution range(Å))
R_{free}	91344	1191 (3.10-3.02)
Clashscore	102246	1303 (3.10-3.02)
Ramachandran outliers	100387	1254 (3.10-3.02)
Sidechain outliers	100360	1254 (3.10-3.02)
RSRZ outliers	91569	1197 (3.10-3.02)

The table below summarises the geometric issues observed across the polymeric chains and their fit to the electron density. The red, orange, yellow and green segments on the lower bar indicate the fraction of residues that contain outliers for ≥ 3 , 2, 1 and 0 types of geometric quality criteria. A grey segment represents the fraction of residues that are not modelled. The numeric value for each fraction is indicated below the corresponding segment, with a dot representing fractions $\leq 5\%$. The upper red bar (where present) indicates the fraction of residues that have poor fit to the electron density. The numeric value is given above the bar.

Mol	Chain	Length	Quality of chain
1	A	907	
1	B	907	

2 Entry composition

There are 4 unique types of molecules in this entry. The entry contains 14473 atoms, of which 0 are hydrogens and 0 are deuteriums.

In the tables below, the ZeroOcc column contains the number of atoms modelled with zero occupancy, the AltConf column contains the number of residues with at least one atom in alternate conformation and the Trace column contains the number of residues modelled with at most 2 atoms.

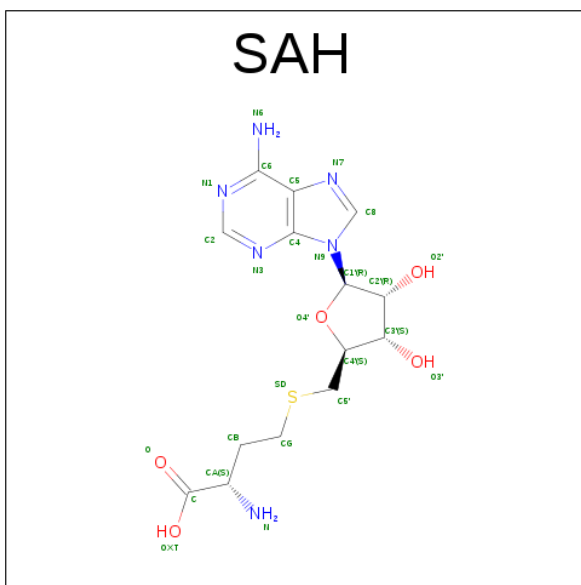
- Molecule 1 is a protein called Genome polyprotein.

Mol	Chain	Residues	Atoms					ZeroOcc	AltConf	Trace
1	A	882	Total	C	N	O	S	0	0	0
			7094	4457	1289	1299	49			
1	B	882	Total	C	N	O	S	0	0	0
			7094	4457	1289	1299	49			

There are 8 discrepancies between the modelled and reference sequences:

Chain	Residue	Modelled	Actual	Comment	Reference
A	-3	GLY	-	expression tag	UNP Q32ZE1
A	-2	SER	-	expression tag	UNP Q32ZE1
A	-1	HIS	-	expression tag	UNP Q32ZE1
A	0	MET	-	expression tag	UNP Q32ZE1
B	-3	GLY	-	expression tag	UNP Q32ZE1
B	-2	SER	-	expression tag	UNP Q32ZE1
B	-1	HIS	-	expression tag	UNP Q32ZE1
B	0	MET	-	expression tag	UNP Q32ZE1

- Molecule 2 is S-ADENOSYL-L-HOMOCYSTEINE (three-letter code: SAH) (formula: C₁₄H₂₀N₆O₅S).



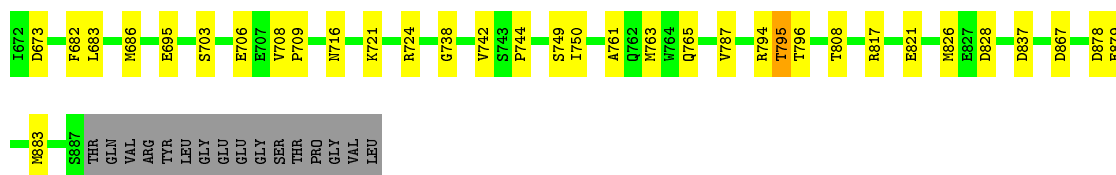
Mol	Chain	Residues	Atoms					ZeroOcc	AltConf
2	A	1	Total	C	N	O	S	0	0
			26	14	6	5	1		
2	B	1	Total	C	N	O	S	0	0
			26	14	6	5	1		

- Molecule 3 is ZINC ION (three-letter code: ZN) (formula: Zn).

Mol	Chain	Residues	Atoms		ZeroOcc	AltConf
3	B	2	Total	Zn	0	0
			2	2		
3	A	2	Total	Zn	0	0
			2	2		

- Molecule 4 is water.

Mol	Chain	Residues	Atoms		ZeroOcc	AltConf
4	A	140	Total	O	0	0
			140	140		
4	B	89	Total	O	0	0
			89	89		



4 Data and refinement statistics

Property	Value	Source
Space group	P 2 ₁ 2 ₁ 2	Depositor
Cell constants a, b, c, α , β , γ	136.01Å 196.41Å 94.98Å 90.00° 90.00° 90.00°	Depositor
Resolution (Å)	44.66 – 3.05 111.82 – 3.05	Depositor EDS
% Data completeness (in resolution range)	99.9 (44.66-3.05) 99.9 (111.82-3.05)	Depositor EDS
R_{merge}	(Not available)	Depositor
R_{sym}	(Not available)	Depositor
$\langle I/\sigma(I) \rangle$ ¹	2.41 (at 3.07Å)	Xtriage
Refinement program	BUSTER-TNT	Depositor
R, R_{free}	0.188 , 0.237 0.211 , 0.260	Depositor DCC
R_{free} test set	2463 reflections (5.02%)	DCC
Wilson B-factor (Å ²)	50.9	Xtriage
Anisotropy	1.100	Xtriage
Bulk solvent k_{sol} (e/Å ³), B_{sol} (Å ²)	0.34 , 74.4	EDS
L-test for twinning ²	$\langle L \rangle = 0.42$, $\langle L^2 \rangle = 0.25$	Xtriage
Estimated twinning fraction	No twinning to report.	Xtriage
F_o, F_c correlation	0.95	EDS
Total number of atoms	14473	wwPDB-VP
Average B, all atoms (Å ²)	60.0	wwPDB-VP

Xtriage's analysis on translational NCS is as follows: *The analyses of the Patterson function reveals a significant off-origin peak that is 48.01 % of the origin peak, indicating pseudo translational symmetry. The chance of finding a peak of this or larger height randomly in a structure without pseudo translational symmetry is equal to 9.1384e-05. The detected translational NCS is most likely also responsible for the elevated intensity ratio.*

¹ Intensities estimated from amplitudes.

² Theoretical values of $\langle |L| \rangle$, $\langle L^2 \rangle$ for acentric reflections are 0.5, 0.333 respectively for untwinned datasets, and 0.375, 0.2 for perfectly twinned datasets.

5 Model quality

5.1 Standard geometry

Bond lengths and bond angles in the following residue types are not validated in this section: ZN, SAH

The Z score for a bond length (or angle) is the number of standard deviations the observed value is removed from the expected value. A bond length (or angle) with $|Z| > 5$ is considered an outlier worth inspection. RMSZ is the root-mean-square of all Z scores of the bond lengths (or angles).

Mol	Chain	Bond lengths		Bond angles	
		RMSZ	# Z >5	RMSZ	# Z >5
1	A	0.52	0/7259	0.73	0/9807
1	B	0.52	0/7259	0.73	0/9807
All	All	0.52	0/14518	0.73	0/19614

There are no bond length outliers.

There are no bond angle outliers.

There are no chirality outliers.

There are no planarity outliers.

5.2 Too-close contacts

In the following table, the Non-H and H(model) columns list the number of non-hydrogen atoms and hydrogen atoms in the chain respectively. The H(added) column lists the number of hydrogen atoms added and optimized by MolProbity. The Clashes column lists the number of clashes within the asymmetric unit, whereas Symm-Clashes lists symmetry related clashes.

Mol	Chain	Non-H	H(model)	H(added)	Clashes	Symm-Clashes
1	A	7094	0	6989	66	0
1	B	7094	0	6989	76	0
2	A	26	0	19	2	0
2	B	26	0	19	1	0
3	A	2	0	0	0	0
3	B	2	0	0	0	0
4	A	140	0	0	1	0
4	B	89	0	0	1	0
All	All	14473	0	14016	142	0

The all-atom clashscore is defined as the number of clashes found per 1000 atoms (including hydrogen atoms). The all-atom clashscore for this structure is 5.

All (142) close contacts within the same asymmetric unit are listed below, sorted by their clash magnitude.

Atom-1	Atom-2	Interatomic distance (Å)	Clash overlap (Å)
1:B:120:GLY:HA2	1:B:264:ARG:HB2	1.64	0.79
1:B:50:THR:HG21	1:B:588:GLY:HA2	1.68	0.74
1:A:50:THR:HG21	1:A:588:GLY:HA2	1.68	0.74
1:A:63:ARG:O	1:A:67:GLU:HG2	1.90	0.71
1:B:63:ARG:O	1:B:67:GLU:HG3	1.95	0.67
1:A:120:GLY:HA2	1:A:264:ARG:HB2	1.78	0.64
1:A:552:ALA:O	1:A:555:THR:HB	1.98	0.64
1:B:552:ALA:O	1:B:555:THR:HB	2.00	0.62
1:A:13:LYS:HG2	1:A:154:PRO:HG3	1.83	0.60
1:A:12:TRP:CD1	1:A:240:LEU:HB3	2.37	0.60
1:A:405:ARG:HD2	1:A:407:ASN:HD21	1.67	0.59
1:B:405:ARG:HD2	1:B:407:ASN:HD21	1.68	0.58
1:A:542:ARG:HD2	1:A:687:GLY:O	2.04	0.58
1:A:720:LEU:HD12	1:A:724:ARG:HB2	1.86	0.57
1:A:396:THR:OG1	1:A:399:GLU:HG3	2.05	0.56
1:B:396:THR:OG1	1:B:399:GLU:HG3	2.05	0.56
1:B:641:LYS:O	1:B:644:LYS:HG2	2.06	0.56
1:A:569:VAL:O	1:A:573:THR:HB	2.06	0.55
1:B:153:SER:HB3	1:B:156:VAL:HG23	1.88	0.55
1:B:569:VAL:O	1:B:573:THR:HB	2.07	0.55
1:A:641:LYS:O	1:A:644:LYS:HG2	2.07	0.55
1:A:195:MET:CE	1:A:206:LEU:HD11	2.37	0.55
1:B:28:LYS:HD2	1:B:213:ARG:HH11	1.72	0.54
1:A:511:LEU:HD22	1:A:519:ILE:HD11	1.89	0.54
1:A:153:SER:HB3	1:A:156:VAL:HG23	1.90	0.54
1:B:511:LEU:HD22	1:B:519:ILE:HD11	1.90	0.54
1:A:195:MET:HE1	1:A:206:LEU:HD11	1.90	0.54
1:B:617:LEU:HG	1:B:662:VAL:HG11	1.90	0.53
1:A:78:VAL:HG12	1:A:80:LEU:HD13	1.91	0.52
1:A:571:LYS:HA	1:A:575:GLN:HG3	1.92	0.52
1:B:146:ASP:HB3	2:B:1001:SAH:HG1	1.92	0.52
1:B:304:TRP:CE3	1:B:595:ILE:HD12	2.44	0.52
1:B:571:LYS:HA	1:B:575:GLN:HG3	1.92	0.52
1:A:878:ASP:O	1:A:879:GLU:HB2	2.09	0.51
1:A:455:MET:HB3	1:A:581:VAL:HG13	1.92	0.51
1:B:12:TRP:CD1	1:B:240:LEU:HB3	2.46	0.51
1:A:146:ASP:HB3	2:A:1001:SAH:HG1	1.93	0.51
1:B:8:LEU:HD13	1:B:238:GLN:HG3	1.93	0.51
1:A:721:LYS:HD3	1:A:837:ASP:HA	1.92	0.50
1:B:721:LYS:HD3	1:B:837:ASP:HA	1.93	0.50

Continued on next page...

Continued from previous page...

Atom-1	Atom-2	Interatomic distance (Å)	Clash overlap (Å)
1:B:493:LEU:HD12	1:B:607:VAL:HG11	1.93	0.50
1:B:101:ARG:HD3	1:B:125:ARG:HB3	1.94	0.50
1:B:310:TYR:HE1	1:B:594:ILE:HD11	1.77	0.50
1:A:304:TRP:CE3	1:A:595:ILE:HD12	2.46	0.49
1:B:617:LEU:CD2	1:B:662:VAL:HG11	2.43	0.49
1:B:62:ILE:HG23	1:B:90:TYR:CD2	2.47	0.49
1:A:307:HIS:HB2	1:A:594:ILE:HG22	1.93	0.49
1:A:62:ILE:HG23	1:A:90:TYR:CD2	2.48	0.49
1:B:196:GLU:HG3	1:B:229:ILE:HG12	1.95	0.49
1:A:787:VAL:HG11	1:A:883:MET:HB2	1.95	0.48
1:B:78:VAL:HG13	1:B:143:LEU:HD12	1.95	0.48
1:A:640:ARG:HB2	4:A:1238:HOH:O	2.13	0.48
1:A:518:TYR:OH	1:A:726:ILE:HA	2.13	0.48
1:B:158:GLU:HG3	1:B:191:MET:HG2	1.95	0.48
1:B:396:THR:HA	4:B:1173:HOH:O	2.13	0.48
1:A:196:GLU:HG3	1:A:229:ILE:HG12	1.96	0.48
1:B:192:MET:HA	1:B:229:ILE:HD11	1.95	0.48
1:B:41:ARG:HH22	1:B:57:ARG:HH21	1.62	0.48
1:B:74:TYR:CE1	1:B:141:ASP:HB3	2.49	0.47
1:B:878:ASP:O	1:B:879:GLU:HB2	2.13	0.47
1:A:269:CYS:SG	1:A:303:THR:HG22	2.54	0.47
1:B:74:TYR:OH	1:B:177:GLY:HA3	2.13	0.47
1:B:243:ARG:HE	1:B:249:ARG:HH21	1.62	0.47
1:B:613:THR:HG23	1:B:662:VAL:HG13	1.97	0.47
1:A:74:TYR:CE1	1:A:141:ASP:HB3	2.50	0.47
1:A:192:MET:HA	1:A:229:ILE:HD11	1.96	0.47
1:B:706:GLU:HG2	1:B:716:ASN:HA	1.95	0.47
1:A:724:ARG:HD3	1:A:828:ASP:HB3	1.96	0.47
1:A:158:GLU:HG3	1:A:191:MET:HG2	1.97	0.47
1:A:74:TYR:OH	1:A:177:GLY:HA3	2.14	0.47
1:B:787:VAL:HG11	1:B:883:MET:HB2	1.97	0.47
1:A:201:ARG:HD2	1:A:202:HIS:CE1	2.50	0.47
1:A:41:ARG:HH22	1:A:57:ARG:HH21	1.63	0.47
1:B:761:ALA:O	1:B:765:GLN:HG3	2.15	0.47
1:A:9:GLY:HA3	1:A:187:TYR:HB2	1.97	0.46
1:A:761:ALA:O	1:A:765:GLN:HG3	2.15	0.46
1:B:143:LEU:O	1:B:179:PHE:HA	2.15	0.46
1:B:617:LEU:HD21	1:B:662:VAL:HG11	1.96	0.46
1:A:763:MET:SD	1:A:795:THR:HB	2.55	0.46
1:A:143:LEU:O	1:A:179:PHE:HA	2.15	0.46
1:B:142:THR:HA	1:B:178:ALA:O	2.16	0.46

Continued on next page...

Continued from previous page...

Atom-1	Atom-2	Interatomic distance (Å)	Clash overlap (Å)
1:B:33:THR:HB	1:B:211:LEU:HD12	1.97	0.46
1:B:269:CYS:SG	1:B:303:THR:HG22	2.56	0.46
1:A:347:THR:HG21	1:A:459:ARG:HG2	1.98	0.45
1:B:293:TRP:HA	1:B:309:SER:O	2.16	0.45
1:B:347:THR:HG21	1:B:459:ARG:HG2	1.97	0.45
1:B:617:LEU:CG	1:B:662:VAL:HG11	2.47	0.45
1:B:763:MET:SD	1:B:795:THR:HB	2.57	0.45
1:B:293:TRP:CZ2	1:B:308:GLY:HA3	2.52	0.45
1:A:187:TYR:HA	1:A:233:VAL:HG11	1.99	0.44
1:B:78:VAL:HG22	1:B:80:LEU:HD13	1.98	0.44
1:A:530:LYS:O	1:A:671:PRO:HD2	2.17	0.44
1:A:724:ARG:HB3	1:A:826:MET:HE1	1.99	0.44
1:B:623:ARG:HD2	1:B:683:LEU:HD13	1.99	0.44
1:B:724:ARG:HB3	1:B:826:MET:HE1	1.99	0.44
1:B:724:ARG:HD3	1:B:828:ASP:HB3	1.98	0.44
1:A:440:ARG:HD3	1:A:488:GLU:OE2	2.18	0.44
1:B:530:LYS:O	1:B:671:PRO:HD2	2.18	0.44
1:B:440:ARG:HD3	1:B:488:GLU:OE2	2.18	0.44
1:B:187:TYR:HA	1:B:233:VAL:HG11	2.00	0.44
1:B:336:VAL:HB	1:B:339:VAL:HG13	1.99	0.44
1:B:284:ARG:HB3	1:B:414:PHE:CE1	2.53	0.44
1:A:146:ASP:OD2	1:A:182:LYS:HD3	2.18	0.43
1:B:489:ALA:HB1	1:B:566:ALA:HA	2.00	0.43
1:A:336:VAL:HB	1:A:339:VAL:HG13	2.00	0.43
1:A:78:VAL:CG1	1:A:80:LEU:HD13	2.48	0.43
1:A:132:VAL:HG22	2:A:1001:SAH:N1	2.33	0.43
1:B:146:ASP:OD2	1:B:182:LYS:HD3	2.18	0.43
1:A:142:THR:HA	1:A:178:ALA:O	2.19	0.43
1:B:91:ALA:HA	1:B:94:ILE:HD12	2.01	0.43
1:A:489:ALA:HB1	1:A:566:ALA:HA	2.01	0.42
1:A:630:VAL:HG21	1:A:648:TRP:CD1	2.54	0.42
1:B:157:GLU:HB3	1:B:185:CYS:HB2	2.00	0.42
1:B:708:VAL:HA	1:B:709:PRO:HD3	1.91	0.42
1:A:157:GLU:HB3	1:A:185:CYS:HB2	2.00	0.42
1:B:573:THR:HG22	1:B:574:TYR:CD1	2.55	0.42
1:B:183:VAL:HG21	1:B:206:LEU:HD21	2.01	0.42
1:B:516:LEU:HA	1:B:519:ILE:HD12	2.01	0.42
1:B:82:CYS:SG	1:B:104:THR:HB	2.60	0.42
1:A:643:GLU:O	1:A:647:ARG:HG3	2.20	0.42
1:A:738:GLY:O	1:A:742:VAL:HG23	2.20	0.42
1:B:630:VAL:HG21	1:B:648:TRP:CD1	2.55	0.42

Continued on next page...

Continued from previous page...

Atom-1	Atom-2	Interatomic distance (Å)	Clash overlap (Å)
1:A:573:THR:HG22	1:A:574:TYR:CD1	2.55	0.41
1:A:91:ALA:HA	1:A:94:ILE:HD12	2.02	0.41
1:A:77:VAL:HG22	1:A:142:THR:HB	2.02	0.41
1:B:643:GLU:O	1:B:647:ARG:HG3	2.20	0.41
1:B:682:PHE:O	1:B:686:MET:HG3	2.21	0.41
1:A:280:ARG:HA	1:A:283:GLU:HG2	2.03	0.41
1:A:563:ARG:O	1:A:567:LEU:HB2	2.21	0.41
1:B:292:THR:HB	1:B:311:GLU:H	1.85	0.41
1:A:82:CYS:SG	1:A:104:THR:HB	2.61	0.41
1:B:293:TRP:CZ3	1:B:594:ILE:HD13	2.56	0.41
1:B:9:GLY:HA3	1:B:187:TYR:HB2	2.02	0.41
1:B:738:GLY:O	1:B:742:VAL:HG23	2.20	0.41
1:A:516:LEU:HA	1:A:519:ILE:HD12	2.02	0.41
1:A:511:LEU:CD2	1:A:519:ILE:HD11	2.51	0.41
1:A:817:ARG:HA	1:A:821:GLU:HB3	2.03	0.41
1:B:817:ARG:HA	1:B:821:GLU:HB3	2.03	0.41
1:B:563:ARG:O	1:B:567:LEU:HB2	2.21	0.41
1:B:511:LEU:CD2	1:B:519:ILE:HD11	2.51	0.40
1:B:435:LEU:HD23	1:B:438:ARG:HH21	1.86	0.40
1:A:309:SER:HA	1:A:592:MET:O	2.22	0.40

There are no symmetry-related clashes.

5.3 Torsion angles [i](#)

5.3.1 Protein backbone [i](#)

In the following table, the Percentiles column shows the percent Ramachandran outliers of the chain as a percentile score with respect to all X-ray entries followed by that with respect to entries of similar resolution.

The Analysed column shows the number of residues for which the backbone conformation was analysed, and the total number of residues.

Mol	Chain	Analysed	Favoured	Allowed	Outliers	Percentiles	
1	A	880/907 (97%)	843 (96%)	34 (4%)	3 (0%)	46	78
1	B	880/907 (97%)	844 (96%)	31 (4%)	5 (1%)	30	66
All	All	1760/1814 (97%)	1687 (96%)	65 (4%)	8 (0%)	34	70

All (8) Ramachandran outliers are listed below:

Mol	Chain	Res	Type
1	A	744	PRO
1	B	744	PRO
1	A	695	GLU
1	B	695	GLU
1	B	58	GLY
1	B	300	PRO
1	A	148	GLY
1	B	148	GLY

5.3.2 Protein sidechains ⓘ

In the following table, the Percentiles column shows the percent sidechain outliers of the chain as a percentile score with respect to all X-ray entries followed by that with respect to entries of similar resolution.

The Analysed column shows the number of residues for which the sidechain conformation was analysed, and the total number of residues.

Mol	Chain	Analysed	Rotameric	Outliers	Percentiles	
1	A	753/770 (98%)	704 (94%)	49 (6%)	21	54
1	B	753/770 (98%)	714 (95%)	39 (5%)	29	64
All	All	1506/1540 (98%)	1418 (94%)	88 (6%)	25	59

All (88) residues with a non-rotameric sidechain are listed below:

Mol	Chain	Res	Type
1	A	28	LYS
1	A	45	LYS
1	A	61	LYS
1	A	63	ARG
1	A	66	GLU
1	A	67	GLU
1	A	80	LEU
1	A	88	SER
1	A	97	VAL
1	A	118	SER
1	A	127	LYS
1	A	128	SER
1	A	175	ARG
1	A	206	LEU
1	A	209	VAL
1	A	215	SER

Continued on next page...

Continued from previous page...

Mol	Chain	Res	Type
1	A	216	THR
1	A	229	ILE
1	A	240	LEU
1	A	268	SER
1	A	280	ARG
1	A	314	THR
1	A	352	GLN
1	A	389	ARG
1	A	410	LEU
1	A	473	ARG
1	A	476	TRP
1	A	479	TRP
1	A	514	GLN
1	A	555	THR
1	A	567	LEU
1	A	575	GLN
1	A	581	VAL
1	A	608	THR
1	A	638	LEU
1	A	643	GLU
1	A	656	ARG
1	A	662	VAL
1	A	666	ASP
1	A	673	ASP
1	A	703	SER
1	A	749	SER
1	A	750	ILE
1	A	753	THR
1	A	794	ARG
1	A	795	THR
1	A	796	THR
1	A	808	THR
1	A	867	ASP
1	B	45	LYS
1	B	66	GLU
1	B	80	LEU
1	B	88	SER
1	B	97	VAL
1	B	123	ILE
1	B	128	SER
1	B	198	LEU
1	B	201	ARG

Continued on next page...

Continued from previous page...

Mol	Chain	Res	Type
1	B	211	LEU
1	B	213	ARG
1	B	229	ILE
1	B	268	SER
1	B	280	ARG
1	B	314	THR
1	B	352	GLN
1	B	389	ARG
1	B	473	ARG
1	B	476	TRP
1	B	479	TRP
1	B	514	GLN
1	B	555	THR
1	B	567	LEU
1	B	575	GLN
1	B	601	ARG
1	B	607	VAL
1	B	638	LEU
1	B	643	GLU
1	B	652	ASN
1	B	656	ARG
1	B	673	ASP
1	B	703	SER
1	B	749	SER
1	B	750	ILE
1	B	794	ARG
1	B	795	THR
1	B	796	THR
1	B	808	THR
1	B	867	ASP

Some sidechains can be flipped to improve hydrogen bonding and reduce clashes. All (3) such sidechains are listed below:

Mol	Chain	Res	Type
1	A	202	HIS
1	A	407	ASN
1	B	407	ASN

5.3.3 RNA ⓘ

There are no RNA molecules in this entry.

5.4 Non-standard residues in protein, DNA, RNA chains [i](#)

There are no non-standard protein/DNA/RNA residues in this entry.

5.5 Carbohydrates [i](#)

There are no carbohydrates in this entry.

5.6 Ligand geometry [i](#)

Of 6 ligands modelled in this entry, 4 are monoatomic - leaving 2 for Mogul analysis.

In the following table, the Counts columns list the number of bonds (or angles) for which Mogul statistics could be retrieved, the number of bonds (or angles) that are observed in the model and the number of bonds (or angles) that are defined in the chemical component dictionary. The Link column lists molecule types, if any, to which the group is linked. The Z score for a bond length (or angle) is the number of standard deviations the observed value is removed from the expected value. A bond length (or angle) with $|Z| > 2$ is considered an outlier worth inspection. RMSZ is the root-mean-square of all Z scores of the bond lengths (or angles).

Mol	Type	Chain	Res	Link	Bond lengths			Bond angles		
					Counts	RMSZ	$\# Z > 2$	Counts	RMSZ	$\# Z > 2$
2	SAH	A	1001	-	22,28,28	0.51	0	18,40,40	0.73	0
2	SAH	B	1001	-	22,28,28	0.50	0	18,40,40	0.75	0

In the following table, the Chirals column lists the number of chiral outliers, the number of chiral centers analysed, the number of these observed in the model and the number defined in the chemical component dictionary. Similar counts are reported in the Torsion and Rings columns. '-' means no outliers of that kind were identified.

Mol	Type	Chain	Res	Link	Chirals	Torsions	Rings
2	SAH	A	1001	-	-	0/7/31/31	0/3/3/3
2	SAH	B	1001	-	-	0/7/31/31	0/3/3/3

There are no bond length outliers.

There are no bond angle outliers.

There are no chirality outliers.

There are no torsion outliers.

There are no ring outliers.

2 monomers are involved in 3 short contacts:

Mol	Chain	Res	Type	Clashes	Symm-Clashes
2	A	1001	SAH	2	0
2	B	1001	SAH	1	0

5.7 Other polymers [i](#)

There are no such residues in this entry.

5.8 Polymer linkage issues [i](#)

There are no chain breaks in this entry.

6 Fit of model and data [i](#)

6.1 Protein, DNA and RNA chains [i](#)

In the following table, the column labelled ‘#RSRZ> 2’ contains the number (and percentage) of RSRZ outliers, followed by percent RSRZ outliers for the chain as percentile scores relative to all X-ray entries and entries of similar resolution. The OWAB column contains the minimum, median, 95th percentile and maximum values of the occupancy-weighted average B-factor per residue. The column labelled ‘Q< 0.9’ lists the number of (and percentage) of residues with an average occupancy less than 0.9.

Mol	Chain	Analysed	<RSRZ>	#RSRZ>2	OWAB(Å ²)	Q<0.9
1	A	882/907 (97%)	0.01	1 (0%) 95 91	29, 56, 82, 111	0
1	B	882/907 (97%)	0.01	0 100 100	37, 61, 85, 117	0
All	All	1764/1814 (97%)	0.01	1 (0%) 95 91	29, 59, 84, 117	0

All (1) RSRZ outliers are listed below:

Mol	Chain	Res	Type	RSRZ
1	A	747	GLY	2.9

6.2 Non-standard residues in protein, DNA, RNA chains [i](#)

There are no non-standard protein/DNA/RNA residues in this entry.

6.3 Carbohydrates [i](#)

There are no carbohydrates in this entry.

6.4 Ligands [i](#)

In the following table, the Atoms column lists the number of modelled atoms in the group and the number defined in the chemical component dictionary. LLDF column lists the quality of electron density of the group with respect to its neighbouring residues in protein, DNA or RNA chains. The B-factors column lists the minimum, median, 95th percentile and maximum values of B factors of atoms in the group. The column labelled ‘Q< 0.9’ lists the number of atoms with occupancy less than 0.9.

Mol	Type	Chain	Res	Atoms	RSCC	RSR	LLDF	B-factors(Å ²)	Q<0.9
2	SAH	B	1001	26/26	0.95	0.23	0.17	68,69,74,75	0
2	SAH	A	1001	26/26	0.95	0.21	-0.38	63,70,71,72	0

Continued on next page...

Continued from previous page...

Mol	Type	Chain	Res	Atoms	RSCC	RSR	LLDF	B-factors(\AA^2)	Q<0.9
3	ZN	B	1002	1/1	0.98	0.17	-1.25	57,57,57,57	0
3	ZN	B	1003	1/1	0.95	0.13	-1.35	94,94,94,94	0
3	ZN	A	1003	1/1	0.98	0.12	-1.61	85,85,85,85	0
3	ZN	A	1002	1/1	0.99	0.15	-2.19	46,46,46,46	0

6.5 Other polymers [i](#)

There are no such residues in this entry.