



Full wwPDB X-ray Structure Validation Report ⓘ

Feb 14, 2017 – 11:05 PM EST

PDB ID : 3TGY
Title : Crystal structure of the complex of Bovine Lactoperoxidase with Ascorbic acid at 2.35 Å resolution
Authors : Yamini, S.; Singh, R.P.; Singh, A.K.; Pandey, N.; Sinha, M.; Kaur, P.; Sharma, S.; Singh, T.P.
Deposited on : 2011-08-18
Resolution : 2.35 Å(reported)

This is a Full wwPDB X-ray Structure Validation Report for a publicly released PDB entry.

We welcome your comments at validation@mail.wwpdb.org

A user guide is available at

<http://wwpdb.org/validation/2016/XrayValidationReportHelp>

with specific help available everywhere you see the ⓘ symbol.

The following versions of software and data (see [references ⓘ](#)) were used in the production of this report:

MolProbity : 4.02b-467
Mogul : 1.7.1 (RC1), CSD as537be (2016)
Xtriage (Phenix) : 1.9-1692
EDS : rb-20028442
Percentile statistics : 20151230.v01 (using entries in the PDB archive December 30th 2015)
Refmac : 5.8.0135
CCP4 : 6.5.0
Ideal geometry (proteins) : Engh & Huber (2001)
Ideal geometry (DNA, RNA) : Parkinson et al. (1996)
Validation Pipeline (wwPDB-VP) : rb-20028442

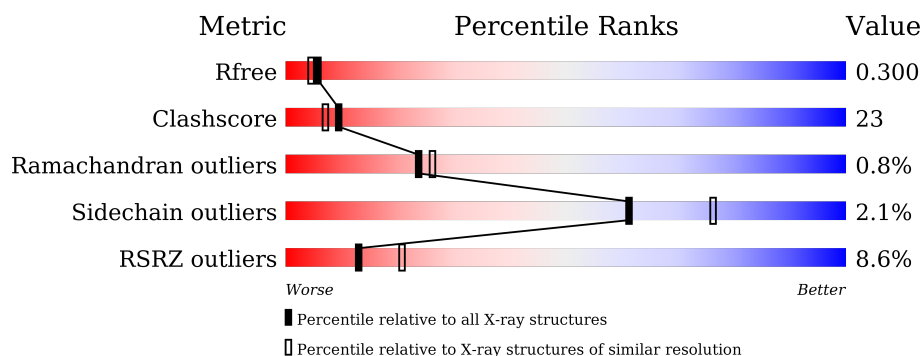
1 Overall quality at a glance

The following experimental techniques were used to determine the structure:

X-RAY DIFFRACTION

The reported resolution of this entry is 2.35 Å.

Percentile scores (ranging between 0-100) for global validation metrics of the entry are shown in the following graphic. The table shows the number of entries on which the scores are based.



Metric	Whole archive (#Entries)	Similar resolution (#Entries, resolution range(Å))
R_{free}	91344	1352 (2.38-2.34)
Clashscore	102246	1456 (2.38-2.34)
Ramachandran outliers	100387	1435 (2.38-2.34)
Sidechain outliers	100360	1436 (2.38-2.34)
RSRZ outliers	91569	1358 (2.38-2.34)

The table below summarises the geometric issues observed across the polymeric chains and their fit to the electron density. The red, orange, yellow and green segments on the lower bar indicate the fraction of residues that contain outliers for ≥ 3 , 2, 1 and 0 types of geometric quality criteria. A grey segment represents the fraction of residues that are not modelled. The numeric value for each fraction is indicated below the corresponding segment, with a dot representing fractions $\leq 5\%$. The upper red bar (where present) indicates the fraction of residues that have poor fit to the electron density. The numeric value is given above the bar.

Mol	Chain	Length	Quality of chain
1	A	595	<div> <div>9%</div> <div>63%</div> <div>34%</div> <div>.</div> </div>

The following table lists non-polymeric compounds, carbohydrate monomers and non-standard residues in protein, DNA, RNA chains that are outliers for geometric or electron-density-fit criteria:

Mol	Type	Chain	Res	Chirality	Geometry	Clashes	Electron density
11	SCN	A	615	-	-	-	X
12	ASC	A	800	-	-	X	X

Continued on next page...

Continued from previous page...

Mol	Type	Chain	Res	Chirality	Geometry	Clashes	Electron density
6	IOD	A	707	-	-	X	-
7	MPD	A	598	-	-	-	X
8	EDO	A	609	-	-	-	X
9	PEG	A	611	-	-	-	X

2 Entry composition [i](#)

There are 13 unique types of molecules in this entry. The entry contains 5328 atoms, of which 0 are hydrogens and 0 are deuteriums.

In the tables below, the ZeroOcc column contains the number of atoms modelled with zero occupancy, the AltConf column contains the number of residues with at least one atom in alternate conformation and the Trace column contains the number of residues modelled with at most 2 atoms.

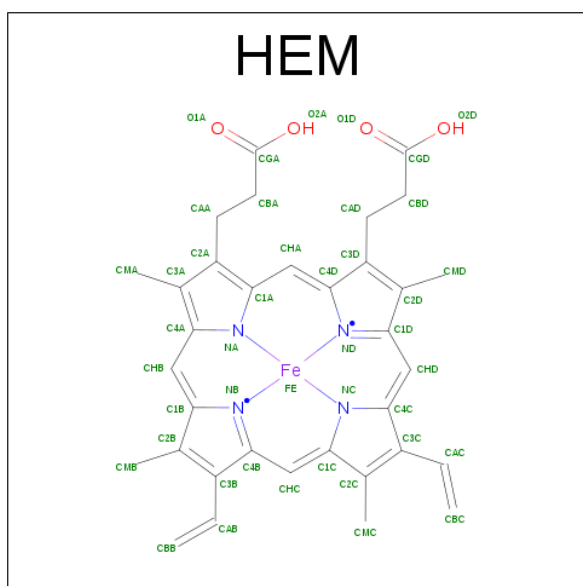
- Molecule 1 is a protein called Lactoperoxidase.

Mol	Chain	Residues	Atoms						ZeroOcc	AltConf	Trace
1	A	595	Total	C	N	O	P	S	0	0	0
			4774	3037	847	863	1	26			

- Molecule 2 is CALCIUM ION (three-letter code: CA) (formula: Ca).

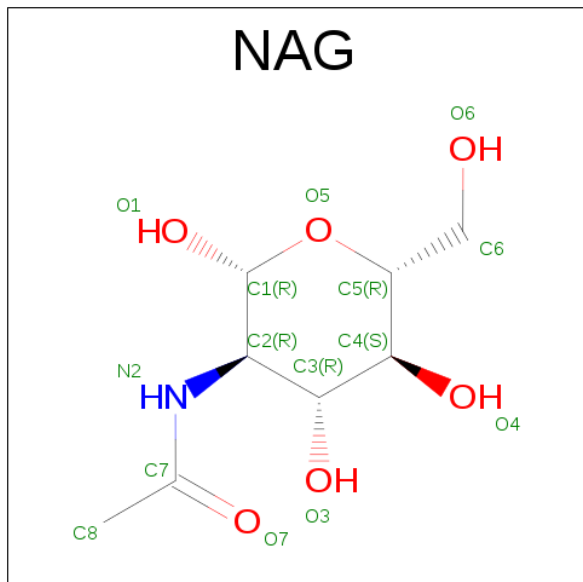
Mol	Chain	Residues	Atoms		ZeroOcc	AltConf
2	A	1	Total	Ca	0	0
			1	1		

- Molecule 3 is PROTOPORPHYRIN IX CONTAINING FE (three-letter code: HEM) (formula: $C_{34}H_{32}FeN_4O_4$).



Mol	Chain	Residues	Atoms					ZeroOcc	AltConf
3	A	1	Total	C	Fe	N	O	0	0
			43	34	1	4	4		

- Molecule 4 is SUGAR (N-ACETYL-D-GLUCOSAMINE) (three-letter code: NAG) (formula: $C_8H_{15}NO_6$).



Mol	Chain	Residues	Atoms				ZeroOcc	AltConf
4	A	1	Total	C	N	O	0	0
			14	8	1	5		
4	A	1	Total	C	N	O	0	0
			14	8	1	5		

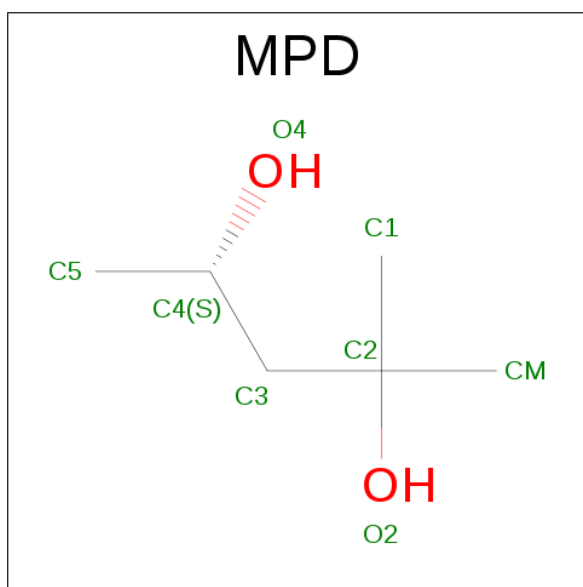
- Molecule 5 is a polymer of unknown type called SUGAR (2-MER).

Mol	Chain	Residues	Atoms				ZeroOcc	AltConf
5	A	2	Total	C	N	O	0	0
			28	16	2	10		
5	A	2	Total	C	N	O	0	0
			28	16	2	10		

- Molecule 6 is IODIDE ION (three-letter code: IOD) (formula: I).

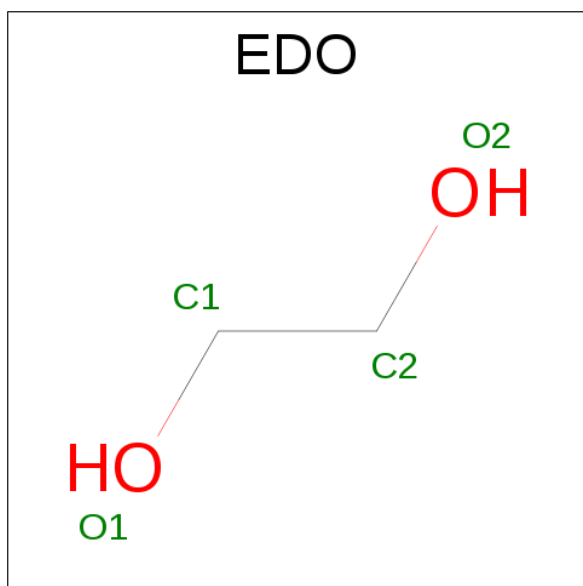
Mol	Chain	Residues	Atoms		ZeroOcc	AltConf
6	A	9	Total	I	0	0
			9	9		

- Molecule 7 is (4S)-2-METHYL-2,4-PENTANEDIOL (three-letter code: MPD) (formula: $C_6H_{14}O_2$).



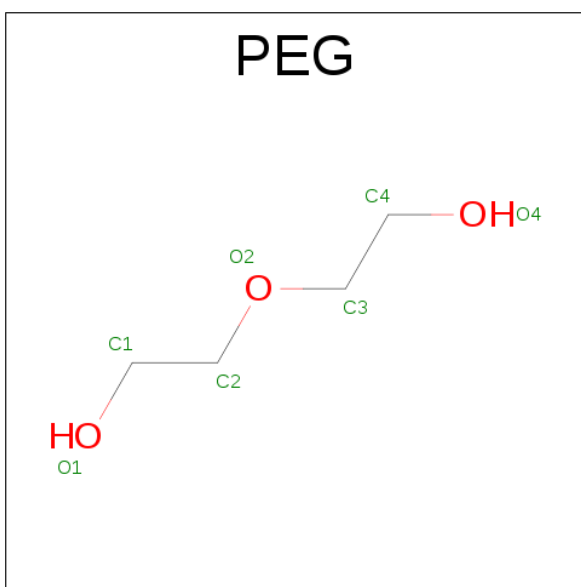
Mol	Chain	Residues	Atoms			ZeroOcc	AltConf
7	A	1	Total	C	O	0	0
			8	6	2		

- Molecule 8 is 1,2-ETHANEDIOL (three-letter code: EDO) (formula: $C_2H_6O_2$).



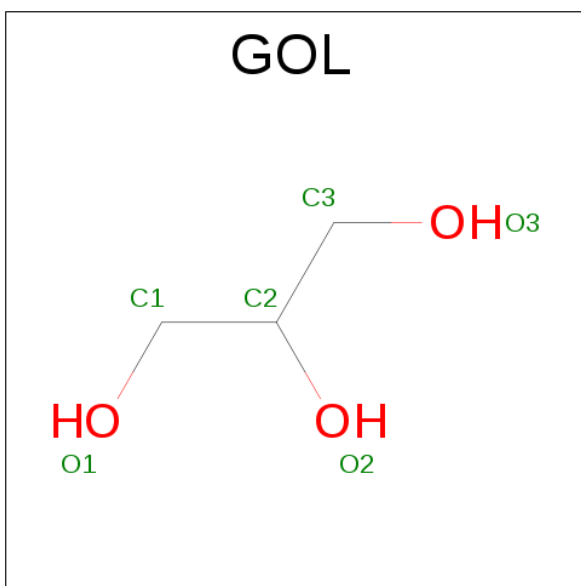
Mol	Chain	Residues	Atoms			ZeroOcc	AltConf
8	A	1	Total	C	O	0	0
			4	2	2		

- Molecule 9 is DI(HYDROXYETHYL)ETHER (three-letter code: PEG) (formula: $C_4H_{10}O_3$).



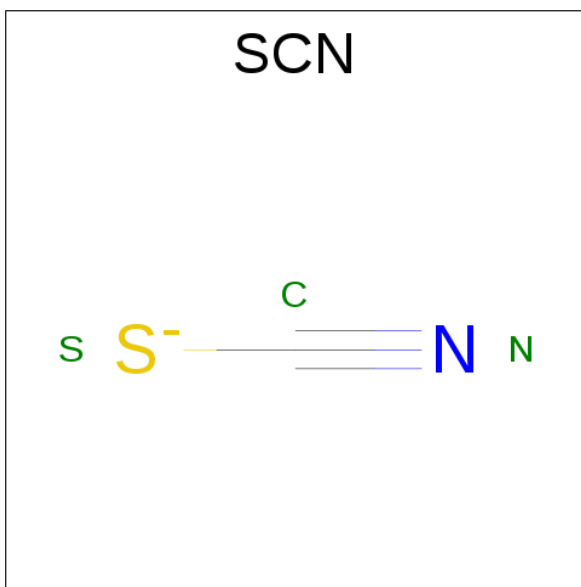
Mol	Chain	Residues	Atoms			ZeroOcc	AltConf
9	A	1	Total	C	O	0	0
			7	4	3		

- Molecule 10 is GLYCEROL (three-letter code: GOL) (formula: $C_3H_8O_3$).



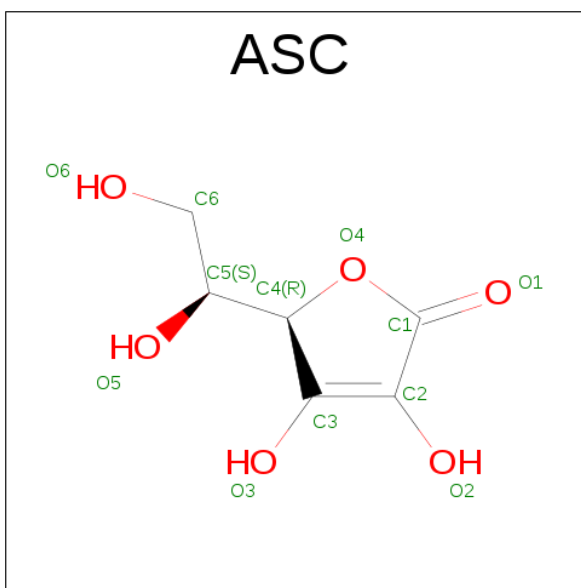
Mol	Chain	Residues	Atoms			ZeroOcc	AltConf
10	A	1	Total	C	O	0	0
			6	3	3		

- Molecule 11 is THIOCYANATE ION (three-letter code: SCN) (formula: CNS).



Mol	Chain	Residues	Atoms				ZeroOcc	AltConf
11	A	1	Total	C	N	S	0	0
			3	1	1	1		

- Molecule 12 is ASCORBIC ACID (three-letter code: ASC) (formula: $C_6H_8O_6$).



Mol	Chain	Residues	Atoms			ZeroOcc	AltConf
12	A	1	Total	C	O	0	0
			12	6	6		

- Molecule 13 is water.

Mol	Chain	Residues	Atoms		ZeroOcc	AltConf
13	A	377	Total 377	O 377	0	0

3 Residue-property plots

These plots are drawn for all protein, RNA and DNA chains in the entry. The first graphic for a chain summarises the proportions of errors displayed in the second graphic. The second graphic shows the sequence view annotated by issues in geometry and electron density. Residues are color-coded according to the number of geometric quality criteria for which they contain at least one outlier: green = 0, yellow = 1, orange = 2 and red = 3 or more. A red dot above a residue indicates a poor fit to the electron density ($\text{RSRZ} > 2$). Stretches of 2 or more consecutive residues without any outlier are shown as a green connector. Residues present in the sample, but not in the model, are shown in grey.

• Molecule 1: Lactoperoxidase



4 Data and refinement statistics

Property	Value	Source
Space group	P 1 21 1	Depositor
Cell constants a, b, c, α , β , γ	53.71Å 79.61Å 65.78Å 90.00° 93.23° 90.00°	Depositor
Resolution (Å)	50.00 – 2.35 44.47 – 2.36	Depositor EDS
% Data completeness (in resolution range)	90.7 (50.00-2.35) 90.8 (44.47-2.36)	Depositor EDS
R_{merge}	(Not available)	Depositor
R_{sym}	0.07	Depositor
$\langle I/\sigma(I) \rangle$ ¹	3.92 (at 2.37Å)	Xtriage
Refinement program	CNS 1.1	Depositor
R, R_{free}	0.226 , 0.250 0.224 , 0.300	Depositor DCC
R_{free} test set	1074 reflections (5.46%)	DCC
Wilson B-factor (Å ²)	36.8	Xtriage
Anisotropy	0.664	Xtriage
Bulk solvent k_{sol} (e/Å ³), B_{sol} (Å ²)	0.32 , 62.3	EDS
L-test for twinning ²	$\langle L \rangle = 0.50$, $\langle L^2 \rangle = 0.34$	Xtriage
Estimated twinning fraction	No twinning to report.	Xtriage
F_o, F_c correlation	0.94	EDS
Total number of atoms	5328	wwPDB-VP
Average B, all atoms (Å ²)	50.0	wwPDB-VP

Xtriage's analysis on translational NCS is as follows: *The largest off-origin peak in the Patterson function is 5.25% of the height of the origin peak. No significant pseudotranslation is detected.*

¹Intensities estimated from amplitudes.

²Theoretical values of $\langle |L| \rangle$, $\langle L^2 \rangle$ for acentric reflections are 0.5, 0.333 respectively for untwinned datasets, and 0.375, 0.2 for perfectly twinned datasets.

5 Model quality ⓘ

5.1 Standard geometry ⓘ

Bond lengths and bond angles in the following residue types are not validated in this section: GOL, MPD, SCN, NAG, SEP, CA, EDO, ASC, HEM, PEG, IOD

The Z score for a bond length (or angle) is the number of standard deviations the observed value is removed from the expected value. A bond length (or angle) with $|Z| > 5$ is considered an outlier worth inspection. RMSZ is the root-mean-square of all Z scores of the bond lengths (or angles).

Mol	Chain	Bond lengths		Bond angles	
		RMSZ	$\# Z > 5$	RMSZ	$\# Z > 5$
1	A	0.66	2/4891 (0.0%)	0.88	18/6634 (0.3%)

All (2) bond length outliers are listed below:

Mol	Chain	Res	Type	Atoms	Z	Observed(Å)	Ideal(Å)
1	A	48	PRO	N-CD	-13.07	1.29	1.47
1	A	9	PRO	N-CD	-11.58	1.31	1.47

All (18) bond angle outliers are listed below:

Mol	Chain	Res	Type	Atoms	Z	Observed(°)	Ideal(°)
1	A	109	HIS	N-CA-CB	-14.00	85.40	110.60
1	A	169	THR	C-N-CD	-9.56	99.58	120.60
1	A	2	TRP	CB-CA-C	-9.09	92.21	110.40
1	A	371	GLU	N-CA-C	-7.72	90.14	111.00
1	A	136	GLY	N-CA-C	7.29	131.32	113.10
1	A	187	LEU	N-CA-C	-7.06	91.95	111.00
1	A	109	HIS	CB-CA-C	6.70	123.81	110.40
1	A	574	HIS	N-CA-C	6.19	127.71	111.00
1	A	112	ASP	CB-CA-C	-6.17	98.07	110.40
1	A	412	MET	N-CA-C	6.03	127.28	111.00
1	A	13	VAL	N-CA-C	-5.93	94.98	111.00
1	A	125	SER	N-CA-C	-5.47	96.23	111.00
1	A	574	HIS	CB-CA-C	-5.41	99.58	110.40
1	A	473	ASN	CB-CA-C	5.25	120.91	110.40
1	A	532	ASN	N-CA-C	-5.07	97.30	111.00
1	A	504	ARG	CB-CA-C	-5.06	100.28	110.40
1	A	174	SER	CB-CA-C	-5.05	100.50	110.10
1	A	577	VAL	CB-CA-C	-5.01	101.89	111.40

There are no chirality outliers.

There are no planarity outliers.

5.2 Too-close contacts

In the following table, the Non-H and H(model) columns list the number of non-hydrogen atoms and hydrogen atoms in the chain respectively. The H(added) column lists the number of hydrogen atoms added and optimized by MolProbity. The Clashes column lists the number of clashes within the asymmetric unit, whereas Symm-Clashes lists symmetry related clashes.

Mol	Chain	Non-H	H(model)	H(added)	Clashes	Symm-Clashes
1	A	4774	0	4686	216	0
2	A	1	0	0	0	0
3	A	43	0	30	11	0
4	A	28	0	26	0	0
5	A	56	0	50	4	0
6	A	9	0	0	4	0
7	A	8	0	13	4	0
8	A	4	0	6	1	0
9	A	7	0	9	0	0
10	A	6	0	8	0	0
11	A	3	0	0	0	0
12	A	12	0	6	6	0
13	A	377	0	0	3	0
All	All	5328	0	4834	221	0

The all-atom clashscore is defined as the number of clashes found per 1000 atoms (including hydrogen atoms). The all-atom clashscore for this structure is 23.

All (221) close contacts within the same asymmetric unit are listed below, sorted by their clash magnitude.

Atom-1	Atom-2	Interatomic distance (Å)	Clash overlap (Å)
1:A:119:LEU:HD23	1:A:119:LEU:O	1.42	1.14
1:A:170:PRO:HB2	1:A:171:PRO:CD	1.77	1.13
1:A:172:TYR:HE2	1:A:177:ARG:HA	1.09	1.10
1:A:166:VAL:O	1:A:168:PRO:HD3	1.54	1.06
1:A:170:PRO:CB	1:A:171:PRO:HD3	1.84	1.05
1:A:541:ARG:HA	1:A:544:LEU:HD12	1.41	1.02
1:A:118:GLU:HB2	1:A:121:SER:HB3	1.38	1.02
1:A:172:TYR:CE2	1:A:177:ARG:HA	1.98	0.99
1:A:425:THR:HG23	1:A:426:HIS:CE1	1.98	0.99
1:A:8:ALA:HB3	1:A:9:PRO:HD3	1.44	0.96

Continued on next page...

Continued from previous page...

Atom-1	Atom-2	Interatomic distance (Å)	Clash overlap (Å)
1:A:213:MET:HG2	1:A:273:HIS:CD2	2.03	0.94
1:A:424:PRO:O	1:A:425:THR:HG22	1.69	0.90
1:A:119:LEU:HD12	1:A:170:PRO:HG3	1.55	0.88
1:A:170:PRO:HB2	1:A:171:PRO:HD3	0.90	0.88
1:A:559:ILE:HG23	6:A:711:IOD:I	2.44	0.87
1:A:425:THR:CG2	1:A:426:HIS:CE1	2.58	0.86
1:A:172:TYR:HE2	1:A:177:ARG:CA	1.90	0.85
1:A:537:THR:H	1:A:540:GLN:HE21	1.24	0.83
1:A:117:THR:CG2	1:A:164:GLY:HA2	2.09	0.82
1:A:295:GLU:O	1:A:299:ILE:HG13	1.81	0.81
1:A:121:SER:HA	1:A:126:LYS:HD3	1.63	0.80
1:A:122:ASN:H	1:A:126:LYS:HE2	1.45	0.79
1:A:258:GLU:OE2	3:A:605:HEM:HMB3	1.82	0.79
1:A:166:VAL:O	1:A:168:PRO:CD	2.30	0.79
1:A:117:THR:HG23	1:A:164:GLY:HA2	1.65	0.78
1:A:146:LYS:HD3	1:A:147:ASN:ND2	1.98	0.77
1:A:348:ARG:HH11	1:A:437:ASN:ND2	1.82	0.77
1:A:108:ASP:OD2	3:A:605:HEM:CMD	2.33	0.77
1:A:117:THR:HG23	1:A:164:GLY:CA	2.16	0.76
1:A:197:PRO:HD2	1:A:198:SEP:O2P	1.85	0.75
1:A:257:SER:O	1:A:381:PHE:HA	1.86	0.75
1:A:551:ARG:HD3	1:A:584:LYS:HA	1.67	0.75
1:A:255:ARG:HG2	12:A:800:ASC:H4	1.69	0.75
1:A:130:GLU:OE1	1:A:426:HIS:HD2	1.69	0.74
1:A:407:MET:HB3	1:A:501:MET:HE3	1.71	0.73
1:A:166:VAL:C	1:A:168:PRO:HD3	2.09	0.73
1:A:199:LEU:HD22	1:A:254:PHE:CZ	2.24	0.73
5:A:599:NAG:H62	5:A:600:NAG:C7	2.19	0.72
1:A:108:ASP:OD2	3:A:605:HEM:HMD3	1.91	0.70
1:A:529:TRP:NE1	1:A:531:GLU:HG2	2.07	0.69
1:A:167:CYS:HB2	1:A:168:PRO:HD3	1.74	0.69
1:A:119:LEU:CD1	1:A:170:PRO:HG3	2.23	0.69
1:A:537:THR:HG23	1:A:540:GLN:NE2	2.08	0.69
1:A:475:ILE:O	1:A:479:LYS:HG3	1.92	0.68
1:A:328:TYR:CD2	1:A:531:GLU:HG3	2.28	0.68
1:A:258:GLU:OE2	3:A:605:HEM:CMB	2.41	0.68
3:A:605:HEM:HMB1	3:A:605:HEM:HBB2	1.74	0.68
1:A:122:ASN:H	1:A:126:LYS:CE	2.05	0.68
1:A:349:PHE:HA	1:A:497:ASN:HD21	1.59	0.68
1:A:425:THR:HG23	1:A:426:HIS:ND1	2.08	0.68
1:A:318:GLY:CA	1:A:504:ARG:O	2.44	0.66

Continued on next page...

Continued from previous page...

Atom-1	Atom-2	Interatomic distance (Å)	Clash overlap (Å)
1:A:130:GLU:CD	1:A:426:HIS:HD2	1.98	0.66
1:A:529:TRP:HE1	1:A:531:GLU:HG2	1.60	0.64
1:A:8:ALA:CB	1:A:9:PRO:HD3	2.17	0.63
1:A:472:LYS:HD2	1:A:500:PRO:HG2	1.81	0.63
1:A:122:ASN:N	1:A:126:LYS:CE	2.61	0.63
1:A:118:GLU:CB	1:A:121:SER:HB3	2.22	0.63
1:A:229:PHE:CD1	1:A:247:PRO:HG2	2.34	0.63
1:A:425:THR:CG2	1:A:426:HIS:ND1	2.61	0.62
1:A:332:ASN:C	1:A:332:ASN:OD1	2.34	0.62
1:A:117:THR:HG21	1:A:164:GLY:HA2	1.80	0.62
5:A:599:NAG:H62	5:A:600:NAG:C8	2.30	0.62
1:A:407:MET:HB3	1:A:501:MET:CE	2.29	0.62
1:A:221:ASP:HB2	1:A:226:TYR:CZ	2.35	0.61
1:A:122:ASN:N	1:A:126:LYS:HE3	2.15	0.61
1:A:208:SER:O	1:A:210:LEU:N	2.28	0.61
1:A:267:THR:O	1:A:271:ARG:HB2	2.00	0.61
1:A:464:LEU:HD12	1:A:481:MET:HG3	1.82	0.61
1:A:123:GLU:O	1:A:126:LYS:HG2	2.01	0.61
1:A:529:TRP:CD1	1:A:531:GLU:HG2	2.35	0.61
1:A:2:TRP:HE3	1:A:3:GLU:H	1.46	0.60
5:A:599:NAG:H62	5:A:600:NAG:H82	1.83	0.60
1:A:169:THR:H	1:A:170:PRO:HD3	1.66	0.60
1:A:318:GLY:HA3	1:A:504:ARG:O	2.02	0.60
1:A:52:GLU:OE1	1:A:62:THR:HB	2.02	0.60
1:A:52:GLU:OE1	1:A:65:LYS:HB2	2.01	0.60
1:A:113:PHE:CZ	1:A:115:PRO:HB3	2.37	0.59
1:A:227:LEU:HD22	1:A:250:LEU:O	2.02	0.59
1:A:227:LEU:HD21	1:A:270:LEU:HD13	1.84	0.59
1:A:301:GLY:O	1:A:305:GLN:HG3	2.02	0.59
1:A:118:GLU:HG2	1:A:118:GLU:O	2.03	0.58
1:A:397:ARG:CG	1:A:559:ILE:HD13	2.33	0.58
1:A:169:THR:N	1:A:170:PRO:HD3	2.18	0.58
1:A:202:ARG:HD3	7:A:598:MPD:H11	1.86	0.58
1:A:119:LEU:O	1:A:119:LEU:CD2	2.35	0.58
1:A:424:PRO:O	1:A:425:THR:CG2	2.47	0.58
1:A:119:LEU:HD23	1:A:119:LEU:C	2.20	0.58
1:A:10:VAL:HG13	1:A:10:VAL:O	2.03	0.58
1:A:169:THR:N	1:A:170:PRO:CD	2.66	0.58
1:A:362:ASP:O	1:A:365:TYR:N	2.36	0.58
1:A:108:ASP:OD2	3:A:605:HEM:HMD2	2.05	0.57
1:A:99:LEU:HG	1:A:567:PHE:CE1	2.40	0.57

Continued on next page...

Continued from previous page...

Atom-1	Atom-2	Interatomic distance (Å)	Clash overlap (Å)
1:A:318:GLY:HA2	1:A:504:ARG:O	2.05	0.57
1:A:166:VAL:C	1:A:168:PRO:CD	2.72	0.57
1:A:169:THR:O	1:A:169:THR:HG22	2.05	0.57
1:A:397:ARG:HG3	1:A:559:ILE:CD1	2.35	0.56
1:A:93:ASP:O	1:A:403:LYS:HD3	2.06	0.56
1:A:537:THR:H	1:A:540:GLN:NE2	2.00	0.56
1:A:400:LEU:HD11	1:A:553:ILE:HD13	1.88	0.55
1:A:42:ALA:HB2	1:A:166:VAL:HG11	1.88	0.55
1:A:118:GLU:HB2	1:A:121:SER:CB	2.25	0.55
1:A:130:GLU:OE1	1:A:426:HIS:CD2	2.56	0.55
1:A:551:ARG:NH1	1:A:582:VAL:O	2.38	0.54
1:A:393:ASP:OD2	1:A:558:HIS:HB2	2.06	0.54
1:A:366:GLN:O	1:A:367:PRO:C	2.43	0.54
1:A:233:LYS:HA	1:A:234:PRO:C	2.28	0.54
1:A:381:PHE:HZ	12:A:800:ASC:H62	1.71	0.54
1:A:172:TYR:CE2	1:A:177:ARG:CA	2.77	0.54
1:A:428:ILE:HG13	1:A:429:HIS:H	1.72	0.54
1:A:244:ALA:HB2	5:A:601:NAG:O5	2.08	0.53
1:A:407:MET:CB	1:A:501:MET:CE	2.86	0.53
1:A:464:LEU:HD11	1:A:478:LYS:HA	1.91	0.53
1:A:312:TYR:O	1:A:316:VAL:HG23	2.09	0.53
1:A:565:HIS:HB3	6:A:720:IOD:I	2.78	0.53
1:A:344:THR:O	3:A:605:HEM:HMD1	2.08	0.52
1:A:202:ARG:HH11	7:A:598:MPD:H11	1.74	0.52
1:A:397:ARG:HG2	1:A:559:ILE:HD13	1.91	0.52
1:A:227:LEU:CD2	1:A:270:LEU:HD13	2.39	0.52
1:A:376:LEU:HA	1:A:379:LEU:HD12	1.91	0.52
1:A:546:LYS:HG3	13:A:889:HOH:O	2.09	0.51
1:A:108:ASP:CG	3:A:605:HEM:HMD3	2.30	0.51
1:A:63:GLN:HG3	1:A:71:ARG:HH12	1.74	0.51
1:A:169:THR:H	1:A:170:PRO:CD	2.22	0.51
1:A:106:ILE:HG23	1:A:191:LEU:HD11	1.93	0.50
1:A:72:VAL:O	1:A:72:VAL:HG23	2.12	0.50
1:A:20:PRO:HG2	1:A:21:TYR:CE1	2.47	0.49
1:A:70:PHE:CD1	1:A:485:LYS:HB2	2.47	0.49
1:A:352:MET:HB2	13:A:625:HOH:O	2.12	0.49
1:A:539:LYS:HB3	1:A:589:PRO:HB3	1.95	0.49
1:A:428:ILE:HG13	1:A:429:HIS:N	2.27	0.49
1:A:8:ALA:N	1:A:9:PRO:CD	2.75	0.49
1:A:146:LYS:CD	1:A:147:ASN:ND2	2.71	0.49
1:A:30:ASN:HB3	1:A:33:SER:O	2.13	0.49

Continued on next page...

Continued from previous page...

Atom-1	Atom-2	Interatomic distance (Å)	Clash overlap (Å)
1:A:442:ARG:NH2	1:A:491:ASP:OD2	2.46	0.49
1:A:474:LYS:HB3	1:A:478:LYS:NZ	2.27	0.48
1:A:328:TYR:CE2	1:A:531:GLU:HG3	2.47	0.48
1:A:378:THR:HG22	8:A:609:EDO:H21	1.96	0.48
1:A:428:ILE:CG1	1:A:429:HIS:N	2.76	0.48
1:A:184:THR:OG1	1:A:188:ASP:OD2	2.31	0.48
1:A:159:PRO:HG3	1:A:426:HIS:CD2	2.49	0.48
1:A:392:ILE:O	1:A:396:VAL:HG23	2.14	0.47
1:A:253:ASP:OD2	1:A:255:ARG:HB2	2.15	0.47
1:A:574:HIS:HD1	1:A:574:HIS:C	2.19	0.46
1:A:255:ARG:HD2	12:A:800:ASC:C2	2.45	0.46
1:A:348:ARG:C	1:A:350:GLY:N	2.69	0.46
1:A:397:ARG:HG3	1:A:559:ILE:HD13	1.96	0.46
1:A:283:LEU:O	1:A:284:ASN:ND2	2.47	0.46
1:A:108:ASP:OD1	3:A:605:HEM:HMD3	2.16	0.46
1:A:261:LEU:HD22	1:A:399:LEU:HG	1.98	0.46
1:A:267:THR:HG21	1:A:392:ILE:HD13	1.97	0.46
1:A:9:PRO:O	1:A:41:ARG:NH1	2.49	0.46
1:A:105:GLN:O	1:A:109:HIS:HB2	2.16	0.46
1:A:144:PHE:CE2	1:A:158:MET:HG3	2.50	0.46
1:A:67:ARG:NH2	1:A:448:GLY:N	2.64	0.46
1:A:476:LEU:HD21	1:A:498:ALA:HB1	1.98	0.46
1:A:199:LEU:HD13	7:A:598:MPD:H12	1.98	0.46
1:A:377:HIS:HA	1:A:380:PHE:CE2	2.51	0.46
1:A:397:ARG:HG3	1:A:559:ILE:HD11	1.96	0.46
1:A:123:GLU:H	1:A:126:LYS:HE3	1.81	0.46
1:A:239:PHE:CZ	1:A:427:LYS:HD3	2.51	0.46
1:A:213:MET:CG	1:A:273:HIS:CD2	2.90	0.45
1:A:468:GLN:O	1:A:472:LYS:N	2.49	0.45
1:A:113:PHE:HB3	1:A:183:VAL:HG13	1.98	0.45
1:A:119:LEU:HD12	1:A:170:PRO:CG	2.36	0.45
1:A:62:THR:HG22	1:A:64:ARG:HG2	1.98	0.45
1:A:172:TYR:CD2	1:A:177:ARG:HB2	2.52	0.45
1:A:229:PHE:CG	1:A:247:PRO:HG2	2.52	0.45
1:A:258:GLU:CD	3:A:605:HEM:HMB3	2.36	0.45
1:A:169:THR:O	1:A:169:THR:CG2	2.65	0.45
1:A:119:LEU:CD1	1:A:170:PRO:CG	2.94	0.45
1:A:166:VAL:HG23	1:A:172:TYR:OH	2.16	0.45
1:A:447:PRO:HG2	1:A:452:TRP:CE2	2.52	0.45
1:A:588:SER:N	1:A:589:PRO:CD	2.80	0.45
1:A:298:LYS:HE3	1:A:535:VAL:HG12	1.99	0.44

Continued on next page...

Continued from previous page...

Atom-1	Atom-2	Interatomic distance (Å)	Clash overlap (Å)
1:A:348:ARG:NH1	1:A:437:ASN:ND2	2.60	0.44
1:A:188:ASP:O	1:A:189:ALA:HB3	2.18	0.44
1:A:578:ASP:O	1:A:581:THR:OG1	2.36	0.44
1:A:126:LYS:HA	1:A:161:PHE:CZ	2.52	0.44
1:A:126:LYS:NZ	13:A:964:HOH:O	2.50	0.44
1:A:125:SER:HA	1:A:128:GLN:CB	2.49	0.43
1:A:452:TRP:HH2	6:A:707:IOD:I	2.72	0.43
1:A:518:GLN:O	1:A:522:ILE:HG12	2.19	0.43
1:A:453:ARG:NH2	1:A:459:SER:OG	2.52	0.43
1:A:538:GLU:O	1:A:539:LYS:C	2.55	0.43
1:A:240:ILE:HD11	1:A:382:ASN:HA	2.00	0.43
1:A:341:ASN:OD1	1:A:444:HIS:ND1	2.43	0.43
1:A:349:PHE:HA	1:A:497:ASN:ND2	2.31	0.43
1:A:239:PHE:CE1	1:A:427:LYS:HD3	2.53	0.43
1:A:121:SER:HA	1:A:126:LYS:CD	2.43	0.43
1:A:551:ARG:CZ	1:A:584:LYS:HG2	2.49	0.43
1:A:393:ASP:N	1:A:394:PRO:CD	2.82	0.42
1:A:166:VAL:O	1:A:167:CYS:HB2	2.19	0.42
1:A:109:HIS:HA	1:A:255:ARG:NH2	2.34	0.42
1:A:101:MET:SD	1:A:101:MET:C	2.98	0.42
1:A:522:ILE:HD13	1:A:522:ILE:HA	1.79	0.42
1:A:99:LEU:HD23	1:A:566:ALA:HB1	2.02	0.42
1:A:572:TYR:CD1	1:A:573:PRO:HA	2.55	0.42
1:A:202:ARG:HD2	7:A:598:MPD:H4	2.01	0.42
1:A:258:GLU:HG3	12:A:800:ASC:O4	2.19	0.41
1:A:468:GLN:HA	1:A:473:ASN:O	2.20	0.41
1:A:492:ILE:HD11	1:A:510:LEU:HD21	2.01	0.41
1:A:113:PHE:O	1:A:181:ASN:HA	2.21	0.41
1:A:196:GLU:HA	1:A:197:PRO:HD3	1.81	0.41
1:A:574:HIS:C	1:A:574:HIS:ND1	2.72	0.41
1:A:474:LYS:O	1:A:478:LYS:HG3	2.21	0.41
1:A:109:HIS:NE2	12:A:800:ASC:O1	2.51	0.41
1:A:170:PRO:CB	1:A:171:PRO:CD	2.60	0.41
1:A:348:ARG:HH11	1:A:437:ASN:HD22	1.64	0.41
1:A:302:ALA:O	1:A:306:ILE:HG13	2.20	0.41
3:A:605:HEM:CMB	3:A:605:HEM:HBB2	2.47	0.41
1:A:236:PRO:O	1:A:239:PHE:HB3	2.21	0.41
1:A:260:ILE:HD11	1:A:386:ILE:HG13	2.02	0.41
1:A:255:ARG:CD	12:A:800:ASC:C2	2.98	0.41
1:A:385:ARG:O	1:A:389:ASP:HB3	2.21	0.41
1:A:96:ARG:HD2	1:A:100:PHE:CG	2.56	0.41

Continued on next page...

Continued from previous page...

Atom-1	Atom-2	Interatomic distance (Å)	Clash overlap (Å)
1:A:119:LEU:C	1:A:119:LEU:CD2	2.87	0.40
1:A:148:ASP:HA	1:A:149:PRO:HD3	1.93	0.40
1:A:450:ASN:OD1	1:A:461:PRO:HD2	2.21	0.40
1:A:537:THR:N	1:A:540:GLN:HE21	2.05	0.40
1:A:271:ARG:HD3	1:A:556:ASN:O	2.21	0.40
1:A:452:TRP:CH2	6:A:707:IOD:I	3.45	0.40

There are no symmetry-related clashes.

5.3 Torsion angles [i](#)

5.3.1 Protein backbone [i](#)

In the following table, the Percentiles column shows the percent Ramachandran outliers of the chain as a percentile score with respect to all X-ray entries followed by that with respect to entries of similar resolution.

The Analysed column shows the number of residues for which the backbone conformation was analysed, and the total number of residues.

Mol	Chain	Analysed	Favoured	Allowed	Outliers	Percentiles
1	A	592/595 (100%)	558 (94%)	29 (5%)	5 (1%)	24 26

All (5) Ramachandran outliers are listed below:

Mol	Chain	Res	Type
1	A	167	CYS
1	A	168	PRO
1	A	170	PRO
1	A	136	GLY
1	A	169	THR

5.3.2 Protein sidechains [i](#)

In the following table, the Percentiles column shows the percent sidechain outliers of the chain as a percentile score with respect to all X-ray entries followed by that with respect to entries of similar resolution.

The Analysed column shows the number of residues for which the sidechain conformation was analysed, and the total number of residues.

Mol	Chain	Analysed	Rotameric	Outliers	Percentiles
1	A	517/517 (100%)	506 (98%)	11 (2%)	61 76

All (11) residues with a non-rotameric sidechain are listed below:

Mol	Chain	Res	Type
1	A	41	ARG
1	A	146	LYS
1	A	172	TYR
1	A	201	SER
1	A	206	LEU
1	A	347	PHE
1	A	360	ARG
1	A	441	CYS
1	A	503	GLU
1	A	538	GLU
1	A	578	ASP

Some sidechains can be flipped to improve hydrogen bonding and reduce clashes. All (14) such sidechains are listed below:

Mol	Chain	Res	Type
1	A	147	ASN
1	A	273	HIS
1	A	284	ASN
1	A	364	ASN
1	A	426	HIS
1	A	437	ASN
1	A	497	ASN
1	A	521	GLN
1	A	540	GLN
1	A	545	GLN
1	A	558	HIS
1	A	565	HIS
1	A	570	ASN
1	A	595	ASN

5.3.3 RNA ⓘ

There are no RNA molecules in this entry.

5.4 Non-standard residues in protein, DNA, RNA chains ⓘ

1 non-standard protein/DNA/RNA residue is modelled in this entry.

In the following table, the Counts columns list the number of bonds (or angles) for which Mogul statistics could be retrieved, the number of bonds (or angles) that are observed in the model and the number of bonds (or angles) that are defined in the chemical component dictionary. The Link column lists molecule types, if any, to which the group is linked. The Z score for a bond length (or angle) is the number of standard deviations the observed value is removed from the expected value. A bond length (or angle) with $|Z| > 2$ is considered an outlier worth inspection. RMSZ is the root-mean-square of all Z scores of the bond lengths (or angles).

Mol	Type	Chain	Res	Link	Bond lengths			Bond angles		
					Counts	RMSZ	$\# Z > 2$	Counts	RMSZ	$\# Z > 2$
1	SEP	A	198	1	7,9,10	0.90	0	8,12,14	2.68	2 (25%)

In the following table, the Chirals column lists the number of chiral outliers, the number of chiral centers analysed, the number of these observed in the model and the number defined in the chemical component dictionary. Similar counts are reported in the Torsion and Rings columns. '-' means no outliers of that kind were identified.

Mol	Type	Chain	Res	Link	Chirals	Torsions	Rings
1	SEP	A	198	1	-	0/5/8/10	0/0/0/0

There are no bond length outliers.

All (2) bond angle outliers are listed below:

Mol	Chain	Res	Type	Atoms	Z	Observed(°)	Ideal(°)
1	A	198	SEP	OG-P-O1P	2.42	113.18	107.08
1	A	198	SEP	OG-CB-CA	6.69	114.09	108.26

There are no chirality outliers.

There are no torsion outliers.

There are no ring outliers.

1 monomer is involved in 1 short contact:

Mol	Chain	Res	Type	Clashes	Symm-Clashes
1	A	198	SEP	1	0

5.5 Carbohydrates ⓘ

4 carbohydrates are modelled in this entry.

In the following table, the Counts columns list the number of bonds (or angles) for which Mogul statistics could be retrieved, the number of bonds (or angles) that are observed in the model and the number of bonds (or angles) that are defined in the chemical component dictionary. The Link column lists molecule types, if any, to which the group is linked. The Z score for a bond length (or angle) is the number of standard deviations the observed value is removed from the expected value. A bond length (or angle) with $|Z| > 2$ is considered an outlier worth inspection. RMSZ is the root-mean-square of all Z scores of the bond lengths (or angles).

Mol	Type	Chain	Res	Link	Bond lengths			Bond angles		
					Counts	RMSZ	$\# Z > 2$	Counts	RMSZ	$\# Z > 2$
5	NAG	A	599	1,5	14,14,15	0.61	0	15,19,21	1.64	3 (20%)
5	NAG	A	600	5	14,14,15	0.57	0	15,19,21	1.05	1 (6%)
5	NAG	A	601	1,5	14,14,15	0.70	0	15,19,21	1.26	1 (6%)
5	NAG	A	602	5	14,14,15	0.44	0	15,19,21	1.60	2 (13%)

In the following table, the Chirals column lists the number of chiral outliers, the number of chiral centers analysed, the number of these observed in the model and the number defined in the chemical component dictionary. Similar counts are reported in the Torsion and Rings columns. '-' means no outliers of that kind were identified.

Mol	Type	Chain	Res	Link	Chirals	Torsions	Rings
5	NAG	A	599	1,5	-	0/6/23/26	0/1/1/1
5	NAG	A	600	5	-	0/6/23/26	0/1/1/1
5	NAG	A	601	1,5	-	0/6/23/26	0/1/1/1
5	NAG	A	602	5	-	0/6/23/26	0/1/1/1

There are no bond length outliers.

All (7) bond angle outliers are listed below:

Mol	Chain	Res	Type	Atoms	Z	Observed(°)	Ideal(°)
5	A	602	NAG	O5-C5-C6	2.09	111.81	107.34
5	A	599	NAG	C1-O5-C5	2.10	115.22	112.14
5	A	600	NAG	C4-C3-C2	2.28	114.88	111.34
5	A	601	NAG	C4-C3-C2	2.55	115.30	111.34
5	A	599	NAG	C4-C3-C2	2.86	115.78	111.34
5	A	599	NAG	C3-C4-C5	4.16	117.64	110.23
5	A	602	NAG	C1-O5-C5	5.24	119.84	112.14

There are no chirality outliers.

There are no torsion outliers.

There are no ring outliers.

3 monomers are involved in 4 short contacts:

Mol	Chain	Res	Type	Clashes	Symm-Clashes
5	A	599	NAG	3	0
5	A	600	NAG	3	0
5	A	601	NAG	1	0

5.6 Ligand geometry

Of 19 ligands modelled in this entry, 10 are monoatomic - leaving 9 for Mogul analysis.

In the following table, the Counts columns list the number of bonds (or angles) for which Mogul statistics could be retrieved, the number of bonds (or angles) that are observed in the model and the number of bonds (or angles) that are defined in the chemical component dictionary. The Link column lists molecule types, if any, to which the group is linked. The Z score for a bond length (or angle) is the number of standard deviations the observed value is removed from the expected value. A bond length (or angle) with $|Z| > 2$ is considered an outlier worth inspection. RMSZ is the root-mean-square of all Z scores of the bond lengths (or angles).

Mol	Type	Chain	Res	Link	Bond lengths			Bond angles		
					Counts	RMSZ	# $ Z > 2$	Counts	RMSZ	# $ Z > 2$
4	NAG	A	596	1	14,14,15	0.62	0	15,19,21	1.25	2 (13%)
7	MPD	A	598	-	6,7,7	2.75	2 (33%)	6,10,10	1.25	0
4	NAG	A	604	1	14,14,15	0.48	0	15,19,21	1.86	4 (26%)
3	HEM	A	605	1,13	24,50,50	2.54	9 (37%)	16,82,82	2.26	7 (43%)
8	EDO	A	609	-	3,3,3	0.27	0	2,2,2	0.15	0
9	PEG	A	611	-	6,6,6	1.66	1 (16%)	5,5,5	0.92	0
10	GOL	A	612	-	5,5,5	0.72	0	5,5,5	0.90	0
11	SCN	A	615	-	2,2,2	1.74	1 (50%)	1,1,1	0.43	0
12	ASC	A	800	-	12,12,12	1.20	1 (8%)	16,17,17	3.77	8 (50%)

In the following table, the Chirals column lists the number of chiral outliers, the number of chiral centers analysed, the number of these observed in the model and the number defined in the chemical component dictionary. Similar counts are reported in the Torsion and Rings columns. '-' means no outliers of that kind were identified.

Mol	Type	Chain	Res	Link	Chirals	Torsions	Rings
4	NAG	A	596	1	-	0/6/23/26	0/1/1/1
7	MPD	A	598	-	-	0/5/5/5	0/0/0/0
4	NAG	A	604	1	-	0/6/23/26	0/1/1/1
3	HEM	A	605	1,13	-	0/6/54/54	0/0/8/8
8	EDO	A	609	-	-	0/1/1/1	0/0/0/0
9	PEG	A	611	-	-	0/4/4/4	0/0/0/0
10	GOL	A	612	-	-	0/4/4/4	0/0/0/0
11	SCN	A	615	-	-	0/0/0/0	0/0/0/0

Continued on next page...

Continued from previous page...

Mol	Type	Chain	Res	Link	Chirals	Torsions	Rings
12	ASC	A	800	-	-	0/6/22/22	0/1/1/1

All (14) bond length outliers are listed below:

Mol	Chain	Res	Type	Atoms	Z	Observed(Å)	Ideal(Å)
3	A	605	HEM	C3C-C2C	-4.98	1.34	1.40
7	A	598	MPD	C1-C2	-4.80	1.36	1.52
7	A	598	MPD	O2-C2	-4.49	1.32	1.44
9	A	611	PEG	O1-C1	-3.87	1.21	1.42
12	A	800	ASC	O4-C4	-3.48	1.39	1.45
3	A	605	HEM	C2A-C3A	-2.91	1.29	1.37
11	A	615	SCN	C-S	2.38	1.78	1.63
3	A	605	HEM	C3D-C2D	2.56	1.45	1.37
3	A	605	HEM	C1C-NC	3.11	1.40	1.36
3	A	605	HEM	CMB-C2B	3.25	1.58	1.51
3	A	605	HEM	C3C-CAC	3.37	1.54	1.47
3	A	605	HEM	CAD-C3D	4.03	1.57	1.52
3	A	605	HEM	C4C-NC	4.87	1.43	1.36
3	A	605	HEM	CMC-C2C	5.16	1.63	1.51

All (21) bond angle outliers are listed below:

Mol	Chain	Res	Type	Atoms	Z	Observed(°)	Ideal(°)
12	A	800	ASC	O1-C1-C2	-8.69	118.69	129.30
3	A	605	HEM	CBD-CAD-C3D	-5.30	103.17	112.47
12	A	800	ASC	O4-C4-C3	-3.63	101.26	104.13
3	A	605	HEM	C3C-C4C-NC	-2.60	106.03	110.94
3	A	605	HEM	CMA-C3A-C4A	-2.55	123.97	128.31
3	A	605	HEM	CMD-C2D-C3D	-2.36	120.31	125.24
4	A	596	NAG	O7-C7-C8	-2.04	118.31	122.07
12	A	800	ASC	O5-C5-C4	2.09	113.92	110.33
12	A	800	ASC	O3-C3-C4	2.27	124.00	117.91
4	A	604	NAG	C2-N2-C7	2.35	126.17	123.11
3	A	605	HEM	CAA-C2A-C3A	2.41	135.88	129.00
3	A	605	HEM	CMD-C2D-C1D	2.44	132.46	128.31
4	A	596	NAG	C1-O5-C5	2.47	115.78	112.14
4	A	604	NAG	C3-C4-C5	2.50	114.69	110.23
12	A	800	ASC	O6-C6-C5	2.78	117.24	111.07
12	A	800	ASC	O5-C5-C6	3.04	116.45	109.23
3	A	605	HEM	CMC-C2C-C3C	3.11	131.16	125.09
4	A	604	NAG	O5-C5-C4	3.20	115.44	110.13
4	A	604	NAG	C1-O5-C5	4.53	118.81	112.14

Continued on next page...

Continued from previous page...

Mol	Chain	Res	Type	Atoms	Z	Observed(°)	Ideal(°)
12	A	800	ASC	O4-C1-O1	6.02	128.10	121.27
12	A	800	ASC	O4-C4-C5	7.88	123.14	109.69

There are no chirality outliers.

There are no torsion outliers.

There are no ring outliers.

4 monomers are involved in 22 short contacts:

Mol	Chain	Res	Type	Clashes	Symm-Clashes
7	A	598	MPD	4	0
3	A	605	HEM	11	0
8	A	609	EDO	1	0
12	A	800	ASC	6	0

5.7 Other polymers [i](#)

There are no such residues in this entry.

5.8 Polymer linkage issues [i](#)

There are no chain breaks in this entry.

6 Fit of model and data ⓘ

6.1 Protein, DNA and RNA chains ⓘ

In the following table, the column labelled ‘#RSRZ> 2’ contains the number (and percentage) of RSRZ outliers, followed by percent RSRZ outliers for the chain as percentile scores relative to all X-ray entries and entries of similar resolution. The OWAB column contains the minimum, median, 95th percentile and maximum values of the occupancy-weighted average B-factor per residue. The column labelled ‘Q< 0.9’ lists the number of (and percentage) of residues with an average occupancy less than 0.9.

Mol	Chain	Analysed	<RSRZ>	#RSRZ>2	OWAB(Å ²)	Q<0.9
1	A	594/595 (99%)	0.53	51 (8%) 13 21	26, 47, 84, 100	0

All (51) RSRZ outliers are listed below:

Mol	Chain	Res	Type	RSRZ
1	A	2	TRP	12.3
1	A	122	ASN	11.3
1	A	172	TYR	9.7
1	A	119	LEU	8.1
1	A	120	GLY	7.1
1	A	173	GLN	6.9
1	A	121	SER	6.5
1	A	593	ARG	6.4
1	A	234	PRO	6.2
1	A	124	HIS	6.2
1	A	595	ASN	5.9
1	A	12	LEU	5.9
1	A	10	VAL	5.8
1	A	13	VAL	5.2
1	A	132	TYR	5.0
1	A	4	VAL	5.0
1	A	6	CYS	4.9
1	A	117	THR	4.7
1	A	587	LEU	4.4
1	A	123	GLU	4.1
1	A	1	SER	4.0
1	A	9	PRO	3.9
1	A	131	GLU	3.9
1	A	11	PRO	3.8
1	A	5	GLY	3.6
1	A	126	LYS	3.6
1	A	530	TRP	3.5

Continued on next page...

Continued from previous page...

Mol	Chain	Res	Type	RSRZ
1	A	174	SER	3.5
1	A	591	ALA	3.3
1	A	594	GLU	3.3
1	A	8	ALA	3.3
1	A	125	SER	3.1
1	A	64	ARG	2.9
1	A	17	GLU	2.9
1	A	590	TRP	2.9
1	A	425	THR	2.8
1	A	581	THR	2.8
1	A	3	GLU	2.7
1	A	118	GLU	2.7
1	A	7	GLY	2.7
1	A	585	LEU	2.5
1	A	279	GLU	2.5
1	A	127	THR	2.5
1	A	210	LEU	2.5
1	A	287	TRP	2.4
1	A	130	GLU	2.3
1	A	565	HIS	2.3
1	A	63	GLN	2.3
1	A	286	HIS	2.2
1	A	18	ASN	2.1
1	A	592	SER	2.1

6.2 Non-standard residues in protein, DNA, RNA chains [i](#)

In the following table, the Atoms column lists the number of modelled atoms in the group and the number defined in the chemical component dictionary. LLDF column lists the quality of electron density of the group with respect to its neighbouring residues in protein, DNA or RNA chains. The B-factors column lists the minimum, median, 95th percentile and maximum values of B factors of atoms in the group. The column labelled 'Q< 0.9' lists the number of atoms with occupancy less than 0.9.

Mol	Type	Chain	Res	Atoms	RSCC	RSR	LLDF	B-factors(Å ²)	Q<0.9
1	SEP	A	198	10/11	0.79	0.25	-	51,52,53,54	0

6.3 Carbohydrates [i](#)

In the following table, the Atoms column lists the number of modelled atoms in the group and the number defined in the chemical component dictionary. LLDF column lists the quality of electron density of the group with respect to its neighbouring residues in protein, DNA or RNA chains.

The B-factors column lists the minimum, median, 95th percentile and maximum values of B factors of atoms in the group. The column labelled 'Q< 0.9' lists the number of atoms with occupancy less than 0.9.

Mol	Type	Chain	Res	Atoms	RSCC	RSR	LLDF	B-factors(Å ²)	Q<0.9
5	NAG	A	601	14/15	0.87	0.15	0.23	58,60,63,67	0
5	NAG	A	599	14/15	0.85	0.18	-0.13	70,73,75,79	0
5	NAG	A	602	14/15	0.82	0.21	-	70,72,73,73	0
5	NAG	A	600	14/15	0.73	0.26	-	83,85,88,89	0

6.4 Ligands

In the following table, the Atoms column lists the number of modelled atoms in the group and the number defined in the chemical component dictionary. LLDF column lists the quality of electron density of the group with respect to its neighbouring residues in protein, DNA or RNA chains. The B-factors column lists the minimum, median, 95th percentile and maximum values of B factors of atoms in the group. The column labelled 'Q< 0.9' lists the number of atoms with occupancy less than 0.9.

Mol	Type	Chain	Res	Atoms	RSCC	RSR	LLDF	B-factors(Å ²)	Q<0.9
9	PEG	A	611	7/7	0.84	0.26	7.91	62,63,63,63	0
12	ASC	A	800	12/12	0.72	0.30	7.80	25,30,33,34	0
7	MPD	A	598	8/8	0.73	0.29	5.05	30,30,31,31	0
8	EDO	A	609	4/4	0.81	0.22	4.17	24,25,25,26	0
11	SCN	A	615	3/3	0.82	0.22	3.03	47,47,48,48	0
6	IOD	A	711	1/1	0.87	0.22	0.29	94,94,94,94	0
2	CA	A	606	1/1	0.97	0.15	0.18	33,33,33,33	0
3	HEM	A	605	43/43	0.96	0.15	0.18	24,27,29,31	0
10	GOL	A	612	6/6	0.86	0.12	-0.54	49,49,50,50	0
6	IOD	A	710	1/1	0.96	0.05	-2.14	76,76,76,76	0
6	IOD	A	707	1/1	0.91	0.06	-3.49	39,39,39,39	0
6	IOD	A	718	1/1	0.98	0.03	-4.48	66,66,66,66	0
6	IOD	A	719	1/1	0.79	0.11	-	96,96,96,96	0
6	IOD	A	709	1/1	0.97	0.07	-	96,96,96,96	0
4	NAG	A	596	14/15	0.82	0.21	-	64,68,70,71	0
6	IOD	A	720	1/1	0.89	0.27	-	95,95,95,95	0
6	IOD	A	708	1/1	0.98	0.05	-	68,68,68,68	0
4	NAG	A	604	14/15	0.83	0.24	-	64,67,68,68	0
6	IOD	A	715	1/1	0.93	0.08	-	78,78,78,78	0

6.5 Other polymers

There are no such residues in this entry.