



Full wwPDB X-ray Structure Validation Report ⓘ

Feb 1, 2016 – 11:58 PM GMT

PDB ID : 6TMN
Title : Structures of two thermolysin-inhibitor complexes that differ by a single hydrogen bond
Authors : Tronrud, D.E.; Holden, H.M.; Matthews, B.W.
Deposited on : 1987-06-29
Resolution : 1.60 Å(reported)

This is a Full wwPDB X-ray Structure Validation Report for a publicly released PDB entry.
We welcome your comments at validation@mail.wwpdb.org
A user guide is available at
<http://wwpdb.org/validation/2016/XrayValidationReportHelp>
with specific help available everywhere you see the ⓘ symbol.

The following versions of software and data (see [references ⓘ](#)) were used in the production of this report:

MolProbity : 4.02b-467
Mogul : 1.7 (RC4), CSD as536be (2015)
Xtriage (Phenix) : 1.9-1692
EDS : rb-20026688
Percentile statistics : 20151230.v01 (using entries in the PDB archive December 30th 2015)
Refmac : 5.8.0135
CCP4 : 6.5.0
Ideal geometry (proteins) : Engh & Huber (2001)
Ideal geometry (DNA, RNA) : Parkinson et al. (1996)
Validation Pipeline (wwPDB-VP) : trunk26865

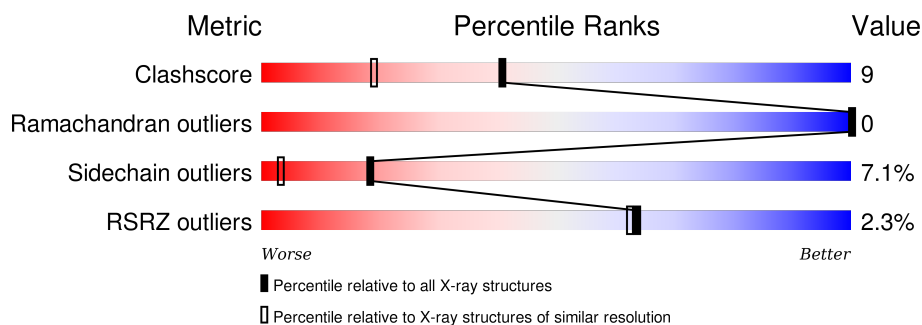
1 Overall quality at a glance

The following experimental techniques were used to determine the structure:

X-RAY DIFFRACTION

The reported resolution of this entry is 1.60 Å.

Percentile scores (ranging between 0-100) for global validation metrics of the entry are shown in the following graphic. The table shows the number of entries on which the scores are based.



Metric	Whole archive (#Entries)	Similar resolution (#Entries, resolution range(Å))
Clashscore	102246	2732 (1.60-1.60)
Ramachandran outliers	100387	2654 (1.60-1.60)
Sidechain outliers	100360	2653 (1.60-1.60)
RSRZ outliers	91569	2479 (1.60-1.60)

The table below summarises the geometric issues observed across the polymeric chains and their fit to the electron density. The red, orange, yellow and green segments on the lower bar indicate the fraction of residues that contain outliers for ≥ 3 , 2, 1 and 0 types of geometric quality criteria. A grey segment represents the fraction of residues that are not modelled. The numeric value for each fraction is indicated below the corresponding segment, with a dot representing fractions $\leq 5\%$. The upper red bar (where present) indicates the fraction of residues that have poor fit to the electron density. The numeric value is given above the bar.

Mol	Chain	Length	Quality of chain
1	E	316	

2 Entry composition [i](#)

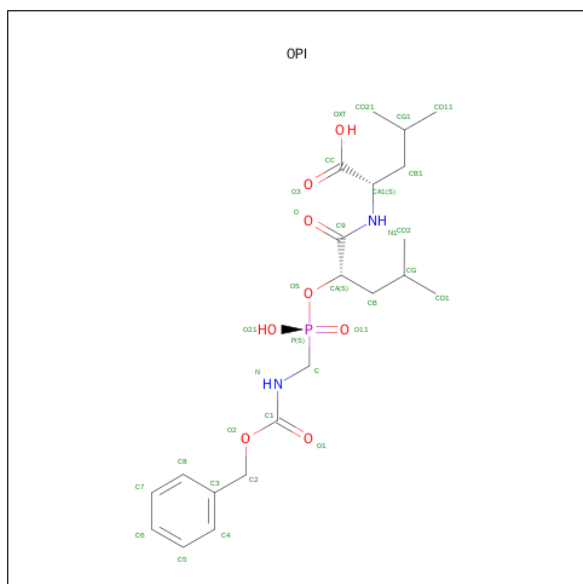
There are 5 unique types of molecules in this entry. The entry contains 2639 atoms, of which 0 are hydrogens and 0 are deuteriums.

In the tables below, the ZeroOcc column contains the number of atoms modelled with zero occupancy, the AltConf column contains the number of residues with at least one atom in alternate conformation and the Trace column contains the number of residues modelled with at most 2 atoms.

- Molecule 1 is a protein called THERMOLYSIN.

Mol	Chain	Residues	Atoms					ZeroOcc	AltConf	Trace
1	E	316	Total	C	N	O	S	0	0	0
			2432	1528	408	494	2			

- Molecule 2 is N-[(2R,4S)-4-HYDROXY-2-(2-METHYLPROPYL)-4-OXIDO-7-OXO-9-PHENYL-3,8-DIOXA-6-AZA-4-PHOSPHANONAN-1-OYL]-L-LEUCINE (three-letter code: 0PI) (formula: C₂₁H₃₃N₂O₈P).



- Molecule 4 is ZINC ION (three-letter code: ZN) (formula: Zn).

Mol	Chain	Residues	Atoms		ZeroOcc	AltConf
4	E	1	Total 1	Zn 1	0	0

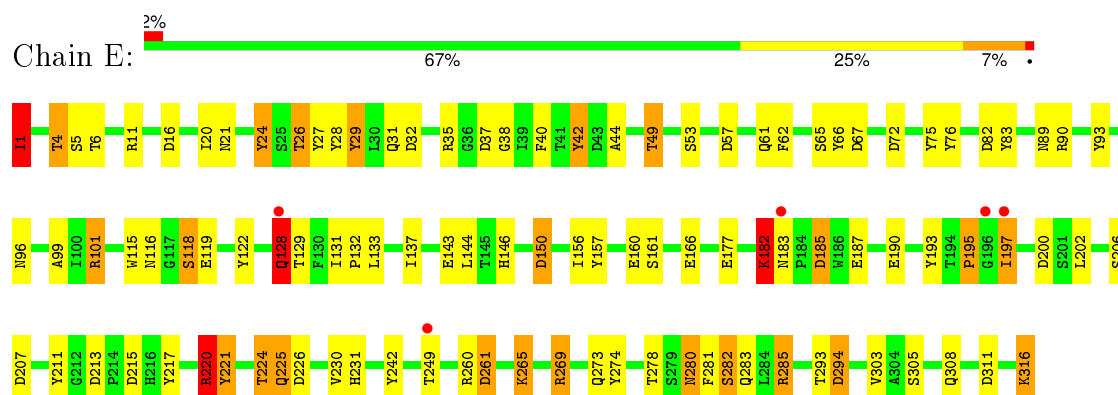
- Molecule 5 is water.

Mol	Chain	Residues	Atoms		ZeroOcc	AltConf
5	E	170	Total 170	O 170	0	0

3 Residue-property plots [i](#)

These plots are drawn for all protein, RNA and DNA chains in the entry. The first graphic for a chain summarises the proportions of errors displayed in the second graphic. The second graphic shows the sequence view annotated by issues in geometry and electron density. Residues are color-coded according to the number of geometric quality criteria for which they contain at least one outlier: green = 0, yellow = 1, orange = 2 and red = 3 or more. A red dot above a residue indicates a poor fit to the electron density ($\text{RSRZ} > 2$). Stretches of 2 or more consecutive residues without any outlier are shown as a green connector. Residues present in the sample, but not in the model, are shown in grey.

● Molecule 1: THERMOLYSIN



4 Data and refinement statistics

Property	Value	Source
Space group	P 61 2 2	Depositor
Cell constants a, b, c, α , β , γ	94.10Å 94.10Å 131.40Å 90.00° 90.00° 120.00°	Depositor
Resolution (Å)	(Not available) – 1.60 29.99 – 1.61	Depositor EDS
% Data completeness (in resolution range)	(Not available) ((Not available)-1.60) 70.9 (29.99-1.61)	Depositor EDS
R_{merge}	(Not available)	Depositor
R_{sym}	(Not available)	Depositor
$\langle I/\sigma(I) \rangle$ ¹	3.67 (at 1.61Å)	Xtriage
Refinement program	TNT	Depositor
R, R_{free}	0.171 , (Not available) 0.156 , (Not available)	Depositor DCC
R_{free} test set	No test flags present.	DCC
Wilson B-factor (Å ²)	13.1	Xtriage
Anisotropy	0.592	Xtriage
Bulk solvent k_{sol} (e/Å ³), B_{sol} (Å ²)	0.37 , 74.1	EDS
Estimated twinning fraction	No twinning to report.	Xtriage
L-test for twinning ²	$\langle L \rangle = 0.50$, $\langle L^2 \rangle = 0.33$	Xtriage
Outliers	0 of 32538 reflections	Xtriage
F_o, F_c correlation	0.97	EDS
Total number of atoms	2639	wwPDB-VP
Average B, all atoms (Å ²)	15.0	wwPDB-VP

Xtriage's analysis on translational NCS is as follows: *The largest off-origin peak in the Patterson function is 4.62% of the height of the origin peak. No significant pseudotranslation is detected.*

¹Intensities estimated from amplitudes.

²Theoretical values of $\langle |L| \rangle$, $\langle L^2 \rangle$ for acentric reflections are 0.5, 0.375 respectively for untwinned datasets, and 0.333, 0.2 for perfectly twinned datasets.

5 Model quality

5.1 Standard geometry

Bond lengths and bond angles in the following residue types are not validated in this section: ZN, CA, OPI

The Z score for a bond length (or angle) is the number of standard deviations the observed value is removed from the expected value. A bond length (or angle) with $|Z| > 5$ is considered an outlier worth inspection. RMSZ is the root-mean-square of all Z scores of the bond lengths (or angles).

Mol	Chain	Bond lengths		Bond angles	
		RMSZ	$\# Z > 5$	RMSZ	$\# Z > 5$
1	E	1.36	15/2491 (0.6%)	2.21	123/3391 (3.6%)

Chiral center outliers are detected by calculating the chiral volume of a chiral center and verifying if the center is modelled as a planar moiety or with the opposite hand. A planarity outlier is detected by checking planarity of atoms in a peptide group, atoms in a mainchain group or atoms of a sidechain that are expected to be planar.

Mol	Chain	#Chirality outliers	#Planarity outliers
1	E	0	1

All (15) bond length outliers are listed below:

Mol	Chain	Res	Type	Atoms	Z	Observed(Å)	Ideal(Å)
1	E	160	GLU	CD-OE1	-8.32	1.16	1.25
1	E	316	LYS	C-OXT	7.78	1.38	1.23
1	E	53	SER	CB-OG	-7.63	1.32	1.42
1	E	187	GLU	CD-OE2	7.32	1.33	1.25
1	E	166	GLU	CD-OE2	7.10	1.33	1.25
1	E	308	GLN	CG-CD	6.32	1.65	1.51
1	E	308	GLN	CD-OE1	6.05	1.37	1.24
1	E	190	GLU	CD-OE2	5.77	1.32	1.25
1	E	119	GLU	CD-OE2	5.75	1.31	1.25
1	E	119	GLU	CD-OE1	-5.69	1.19	1.25
1	E	118	SER	CB-OG	-5.59	1.34	1.42
1	E	150	ASP	CG-OD2	5.43	1.37	1.25
1	E	261	ASP	CG-OD2	5.40	1.37	1.25
1	E	177	GLU	CD-OE1	-5.27	1.19	1.25
1	E	206	SER	CB-OG	-5.23	1.35	1.42

All (123) bond angle outliers are listed below:

Mol	Chain	Res	Type	Atoms	Z	Observed(°)	Ideal(°)
1	E	269	ARG	NE-CZ-NH1	-14.61	113.00	120.30
1	E	260	ARG	NE-CZ-NH2	-13.93	113.34	120.30
1	E	16	ASP	CB-CG-OD2	-13.89	105.80	118.30
1	E	207	ASP	CB-CG-OD1	13.88	130.79	118.30
1	E	274	TYR	CB-CG-CD2	13.62	129.17	121.00
1	E	207	ASP	CB-CG-OD2	-12.06	107.45	118.30
1	E	269	ARG	CD-NE-CZ	-12.01	106.79	123.60
1	E	101	ARG	CG-CD-NE	-11.61	87.42	111.80
1	E	220	ARG	NE-CZ-NH2	-11.12	114.74	120.30
1	E	75	TYR	CB-CG-CD1	-11.09	114.35	121.00
1	E	29	TYR	CB-CG-CD1	-11.08	114.35	121.00
1	E	4	THR	OG1-CB-CG2	-10.81	85.14	110.00
1	E	211	TYR	CB-CG-CD2	-10.35	114.79	121.00
1	E	200	ASP	CB-CG-OD2	-10.28	109.05	118.30
1	E	285	ARG	NE-CZ-NH1	10.12	125.36	120.30
1	E	197	ILE	CA-CB-CG1	9.97	129.95	111.00
1	E	226	ASP	CB-CG-OD1	9.90	127.21	118.30
1	E	260	ARG	NE-CZ-NH1	9.75	125.17	120.30
1	E	261	ASP	CB-CG-OD2	-9.63	109.63	118.30
1	E	311	ASP	CB-CG-OD2	-9.60	109.66	118.30
1	E	316	LYS	CB-CA-C	9.40	129.21	110.40
1	E	193	TYR	CB-CG-CD1	-9.16	115.50	121.00
1	E	274	TYR	CB-CG-CD1	-8.61	115.83	121.00
1	E	66	TYR	CB-CG-CD1	8.57	126.14	121.00
1	E	311	ASP	CB-CG-OD1	8.55	126.00	118.30
1	E	101	ARG	NE-CZ-NH2	-8.46	116.07	120.30
1	E	75	TYR	CG-CD2-CE2	-8.08	114.83	121.30
1	E	6	THR	OG1-CB-CG2	-7.98	91.65	110.00
1	E	27	TYR	CB-CG-CD1	-7.81	116.32	121.00
1	E	269	ARG	NE-CZ-NH2	7.80	124.20	120.30
1	E	57	ASP	CB-CG-OD1	7.72	125.25	118.30
1	E	221	TYR	CB-CG-CD2	-7.71	116.37	121.00
1	E	294	ASP	CB-CG-OD1	7.66	125.19	118.30
1	E	101	ARG	CD-NE-CZ	7.65	134.31	123.60
1	E	215	ASP	CB-CG-OD1	7.59	125.13	118.30
1	E	278	THR	N-CA-CB	-7.59	95.88	110.30
1	E	93	TYR	CB-CG-CD2	-7.54	116.48	121.00
1	E	215	ASP	CB-CG-OD2	-7.52	111.53	118.30
1	E	156	ILE	CA-CB-CG2	7.48	125.85	110.90
1	E	72	ASP	CB-CG-OD1	7.27	124.84	118.30
1	E	28	TYR	CB-CG-CD2	-7.25	116.65	121.00
1	E	90	ARG	NE-CZ-NH2	-7.23	116.68	120.30
1	E	217	TYR	CB-CG-CD2	-7.23	116.66	121.00

Continued on next page...

Continued from previous page...

Mol	Chain	Res	Type	Atoms	Z	Observed(°)	Ideal(°)
1	E	202	LEU	CB-CG-CD1	-7.21	98.74	111.00
1	E	35	ARG	NE-CZ-NH1	7.21	123.91	120.30
1	E	61	GLN	CA-CB-CG	-7.02	97.96	113.40
1	E	161	SER	CB-CA-C	6.98	123.36	110.10
1	E	202	LEU	CB-CG-CD2	-6.93	99.21	111.00
1	E	316	LYS	CB-CG-CD	-6.90	93.65	111.60
1	E	226	ASP	CB-CG-OD2	-6.87	112.12	118.30
1	E	5	SER	N-CA-CB	6.77	120.65	110.50
1	E	122	TYR	CG-CD2-CE2	6.75	126.70	121.30
1	E	274	TYR	CG-CD2-CE2	6.72	126.67	121.30
1	E	220	ARG	CA-CB-CG	6.70	128.14	113.40
1	E	282	SER	CB-CA-C	6.66	122.75	110.10
1	E	260	ARG	CD-NE-CZ	6.63	132.89	123.60
1	E	200	ASP	CB-CG-OD1	6.59	124.23	118.30
1	E	221	TYR	CG-CD2-CE2	-6.56	116.05	121.30
1	E	76	TYR	CZ-CE2-CD2	-6.56	113.90	119.80
1	E	67	ASP	CB-CG-OD2	-6.54	112.42	118.30
1	E	308	GLN	CG-CD-OE1	6.54	134.67	121.60
1	E	182	LYS	CD-CE-NZ	6.52	126.70	111.70
1	E	76	TYR	CG-CD1-CE1	-6.38	116.19	121.30
1	E	133	LEU	CB-CG-CD2	-6.26	100.35	111.00
1	E	242	TYR	CG-CD2-CE2	-6.19	116.35	121.30
1	E	221	TYR	CD1-CG-CD2	6.13	124.65	117.90
1	E	242	TYR	CB-CG-CD2	-6.09	117.35	121.00
1	E	281	PHE	CB-CG-CD2	-6.08	116.55	120.80
1	E	11	ARG	NE-CZ-NH1	6.05	123.33	120.30
1	E	293	THR	CA-CB-CG2	-6.04	103.95	112.40
1	E	128	GLN	N-CA-CB	-6.02	99.77	110.60
1	E	274	TYR	CD1-CE1-CZ	5.90	125.11	119.80
1	E	305	SER	N-CA-CB	5.87	119.31	110.50
1	E	220	ARG	N-CA-CB	-5.87	100.04	110.60
1	E	89	ASN	CA-CB-CG	-5.85	100.53	113.40
1	E	75	TYR	CD1-CG-CD2	5.85	124.33	117.90
1	E	82	ASP	CB-CG-OD1	5.85	123.56	118.30
1	E	75	TYR	CD1-CE1-CZ	-5.84	114.55	119.80
1	E	150	ASP	CB-CG-OD1	-5.79	113.09	118.30
1	E	185	ASP	CB-CG-OD1	5.74	123.47	118.30
1	E	213	ASP	CB-CG-OD2	-5.74	113.14	118.30
1	E	11	ARG	CD-NE-CZ	-5.72	115.59	123.60
1	E	195	PRO	C-N-CA	-5.68	110.38	122.30
1	E	24	TYR	CG-CD2-CE2	-5.67	116.76	121.30
1	E	42	TYR	CZ-CE2-CD2	-5.62	114.74	119.80

Continued on next page...

Continued from previous page...

Mol	Chain	Res	Type	Atoms	Z	Observed(°)	Ideal(°)
1	E	83	TYR	CB-CG-CD2	-5.59	117.64	121.00
1	E	261	ASP	CB-CA-C	-5.58	99.23	110.40
1	E	303	VAL	CG1-CB-CG2	-5.58	101.97	110.90
1	E	182	LYS	CG-CD-CE	5.57	128.60	111.90
1	E	26	THR	N-CA-CB	5.56	120.86	110.30
1	E	273	GLN	CB-CA-C	-5.55	99.30	110.40
1	E	26	THR	CA-CB-OG1	5.53	120.61	109.00
1	E	65	SER	CB-CA-C	5.52	120.59	110.10
1	E	285	ARG	NE-CZ-NH2	-5.52	117.54	120.30
1	E	265	LYS	CA-CB-CG	-5.51	101.27	113.40
1	E	242	TYR	CD1-CG-CD2	5.51	123.97	117.90
1	E	37	ASP	CB-CG-OD1	5.51	123.26	118.30
1	E	224	THR	OG1-CB-CG2	5.49	122.64	110.00
1	E	1	ILE	O-C-N	-5.47	113.95	122.70
1	E	99	ALA	CB-CA-C	-5.43	101.95	110.10
1	E	42	TYR	CB-CG-CD1	-5.40	117.76	121.00
1	E	157	TYR	CB-CG-CD1	-5.40	117.76	121.00
1	E	1	ILE	CA-CB-CG2	5.39	121.69	110.90
1	E	76	TYR	CB-CG-CD1	-5.37	117.78	121.00
1	E	29	TYR	CG-CD2-CE2	-5.37	117.01	121.30
1	E	231	HIS	N-CA-CB	5.36	120.25	110.60
1	E	6	THR	CA-CB-CG2	-5.35	104.91	112.40
1	E	62	PHE	CB-CG-CD2	5.35	124.55	120.80
1	E	11	ARG	NE-CZ-NH2	-5.35	117.63	120.30
1	E	249	THR	CA-CB-CG2	-5.32	104.96	112.40
1	E	57	ASP	CB-CG-OD2	-5.30	113.53	118.30
1	E	260	ARG	CG-CD-NE	-5.29	100.69	111.80
1	E	67	ASP	CB-CG-OD1	5.24	123.02	118.30
1	E	101	ARG	CA-CB-CG	-5.22	101.90	113.40
1	E	44	ALA	O-C-N	-5.20	114.38	122.70
1	E	49	THR	N-CA-CB	-5.20	100.43	110.30
1	E	230	VAL	CG1-CB-CG2	5.18	119.19	110.90
1	E	16	ASP	CB-CG-OD1	5.16	122.94	118.30
1	E	160	GLU	OE1-CD-OE2	-5.11	117.17	123.30
1	E	129	THR	OG1-CB-CG2	5.06	121.64	110.00
1	E	101	ARG	CB-CA-C	-5.05	100.29	110.40
1	E	157	TYR	CZ-CE2-CD2	-5.02	115.28	119.80
1	E	76	TYR	CD1-CG-CD2	5.02	123.42	117.90

There are no chirality outliers.

All (1) planarity outliers are listed below:

Mol	Chain	Res	Type	Group
1	E	21	ASN	Sidechain

5.2 Too-close contacts ⓘ

In the following table, the Non-H and H(model) columns list the number of non-hydrogen atoms and hydrogen atoms in the chain respectively. The H(added) column lists the number of hydrogen atoms added and optimized by MolProbity. The Clashes column lists the number of clashes within the asymmetric unit, whereas Symm-Clashes lists symmetry related clashes.

Mol	Chain	Non-H	H(model)	H(added)	Clashes	Symm-Clashes
1	E	2432	0	2267	23	0
2	E	32	0	31	18	0
3	E	4	0	0	0	0
4	E	1	0	0	0	0
5	E	170	0	0	3	2
All	All	2639	0	2298	41	2

The all-atom clashscore is defined as the number of clashes found per 1000 atoms (including hydrogen atoms). The all-atom clashscore for this structure is 9.

All (41) close contacts within the same asymmetric unit are listed below, sorted by their clash magnitude.

Atom-1	Atom-2	Interatomic distance (Å)	Clash overlap (Å)
2:E:317:0PI:HD16	2:E:317:0PI:CD11	0.97	1.15
2:E:317:0PI:CD21	2:E:317:0PI:HD24	0.97	1.14
2:E:317:0PI:CD21	2:E:317:0PI:HD25	0.97	1.14
2:E:317:0PI:HD15	2:E:317:0PI:CD11	0.97	1.11
2:E:317:0PI:HD14	2:E:317:0PI:CD11	0.97	1.10
1:E:285:ARG:HD3	1:E:316:LYS:HD3	1.33	1.09
2:E:317:0PI:CD21	2:E:317:0PI:HD26	0.97	1.06
2:E:317:0PI:CG1	2:E:317:0PI:HD24	2.04	0.88
2:E:317:0PI:CG1	2:E:317:0PI:HD25	2.04	0.87
2:E:317:0PI:CG1	2:E:317:0PI:HD14	2.05	0.86
2:E:317:0PI:CG1	2:E:317:0PI:HD16	2.05	0.86
2:E:317:0PI:CG1	2:E:317:0PI:HD26	2.04	0.86
2:E:317:0PI:CG1	2:E:317:0PI:HD15	2.05	0.86
2:E:317:0PI:HD24	2:E:317:0PI:HD25	1.58	0.86
2:E:317:0PI:HD26	2:E:317:0PI:HD24	1.58	0.85
2:E:317:0PI:HD15	2:E:317:0PI:HD14	1.58	0.83
2:E:317:0PI:HD26	2:E:317:0PI:HD25	1.58	0.83
2:E:317:0PI:HD16	2:E:317:0PI:HD14	1.58	0.82

Continued on next page...

Continued from previous page...

Atom-1	Atom-2	Interatomic distance (Å)	Clash overlap (Å)
2:E:317:0PI:HD16	2:E:317:0PI:HD15	1.58	0.82
1:E:269:ARG:NH1	1:E:294:ASP:OD2	2.16	0.78
1:E:116:ASN:O	5:E:323:HOH:O	2.06	0.73
1:E:285:ARG:HD3	1:E:316:LYS:CD	2.19	0.69
1:E:4:THR:HG22	1:E:24:TYR:HB3	1.80	0.63
1:E:42:TYR:HE2	1:E:101:ARG:HG2	1.65	0.62
1:E:1:ILE:HG21	1:E:29:TYR:CD2	2.36	0.61
1:E:220:ARG:HD2	5:E:480:HOH:O	2.02	0.59
1:E:280:ASN:HD22	1:E:283:GLN:H	1.50	0.59
1:E:221:TYR:OH	1:E:225:GLN:HG3	2.03	0.59
1:E:137:ILE:HG22	1:E:182:LYS:HZ3	1.74	0.52
1:E:280:ASN:ND2	1:E:283:GLN:H	2.09	0.51
1:E:42:TYR:CE2	1:E:101:ARG:HG2	2.47	0.50
1:E:137:ILE:H	1:E:182:LYS:NZ	2.11	0.48
1:E:137:ILE:CG2	1:E:182:LYS:HD3	2.44	0.47
1:E:128:GLN:O	1:E:195:PRO:HD2	2.18	0.43
1:E:32:ASP:O	1:E:38:GLY:HA2	2.18	0.43
1:E:131:ILE:HB	1:E:132:PRO:CD	2.49	0.43
1:E:143:GLU:O	1:E:146:HIS:HB2	2.19	0.42
1:E:131:ILE:HG23	1:E:195:PRO:HG3	2.01	0.42
1:E:265:LYS:HE2	5:E:404:HOH:O	2.20	0.41
1:E:31:GLN:HG3	1:E:40:PHE:CE1	2.55	0.41
1:E:115:TRP:NE1	1:E:150:ASP:OD2	2.53	0.41

All (2) symmetry-related close contacts are listed below. The label for Atom-2 includes the symmetry operator and encoded unit-cell translations to be applied.

Atom-1	Atom-2	Interatomic distance (Å)	Clash overlap (Å)
5:E:434:HOH:O	5:E:434:HOH:O[7_555]	1.80	0.40
5:E:387:HOH:O	5:E:387:HOH:O[12_565]	2.07	0.13

5.3 Torsion angles ⓘ

5.3.1 Protein backbone ⓘ

In the following table, the Percentiles column shows the percent Ramachandran outliers of the chain as a percentile score with respect to all X-ray entries followed by that with respect to entries of similar resolution.

The Analysed column shows the number of residues for which the backbone conformation was

analysed, and the total number of residues.

Mol	Chain	Analysed	Favoured	Allowed	Outliers	Percentiles	
1	E	314/316 (99%)	301 (96%)	13 (4%)	0	100	100

There are no Ramachandran outliers to report.

5.3.2 Protein sidechains ⓘ

In the following table, the Percentiles column shows the percent sidechain outliers of the chain as a percentile score with respect to all X-ray entries followed by that with respect to entries of similar resolution.

The Analysed column shows the number of residues for which the sidechain conformation was analysed, and the total number of residues.

Mol	Chain	Analysed	Rotameric	Outliers	Percentiles	
1	E	252/252 (100%)	234 (93%)	18 (7%)	18	3

All (18) residues with a non-rotameric sidechain are listed below:

Mol	Chain	Res	Type
1	E	1	ILE
1	E	20	ILE
1	E	26	THR
1	E	49	THR
1	E	96	ASN
1	E	118	SER
1	E	128	GLN
1	E	144	LEU
1	E	182	LYS
1	E	183	ASN
1	E	185	ASP
1	E	197	ILE
1	E	220	ARG
1	E	224	THR
1	E	225	GLN
1	E	261	ASP
1	E	280	ASN
1	E	282	SER

Some sidechains can be flipped to improve hydrogen bonding and reduce clashes. All (5) such sidechains are listed below:

Mol	Chain	Res	Type
1	E	31	GLN
1	E	33	ASN
1	E	97	ASN
1	E	280	ASN
1	E	290	GLN

5.3.3 RNA [i](#)

There are no RNA molecules in this entry.

5.4 Non-standard residues in protein, DNA, RNA chains [i](#)

There are no non-standard protein/DNA/RNA residues in this entry.

5.5 Carbohydrates [i](#)

There are no carbohydrates in this entry.

5.6 Ligand geometry [i](#)

Of 6 ligands modelled in this entry, 5 are monoatomic - leaving 1 for Mogul analysis.

In the following table, the Counts columns list the number of bonds (or angles) for which Mogul statistics could be retrieved, the number of bonds (or angles) that are observed in the model and the number of bonds (or angles) that are defined in the chemical component dictionary. The Link column lists molecule types, if any, to which the group is linked. The Z score for a bond length (or angle) is the number of standard deviations the observed value is removed from the expected value. A bond length (or angle) with $|Z| > 2$ is considered an outlier worth inspection. RMSZ is the root-mean-square of all Z scores of the bond lengths (or angles).

Mol	Type	Chain	Res	Link	Bond lengths			Bond angles		
					Counts	RMSZ	$\# Z > 2$	Counts	RMSZ	$\# Z > 2$
2	0PI	E	317	4	27,32,32	2.16	5 (18%)	31,43,43	2.30	12 (38%)

In the following table, the Chirals column lists the number of chiral outliers, the number of chiral centers analysed, the number of these observed in the model and the number defined in the chemical component dictionary. Similar counts are reported in the Torsion and Rings columns. '-' means no outliers of that kind were identified.

Mol	Type	Chain	Res	Link	Chirals	Torsions	Rings
2	0PI	E	317	4	-	0/30/36/36	0/1/1/1

All (5) bond length outliers are listed below:

Mol	Chain	Res	Type	Atoms	Z	Observed(Å)	Ideal(Å)
2	E	317	0PI	C-N	-6.48	1.38	1.45
2	E	317	0PI	P-O21	-6.10	1.41	1.56
2	E	317	0PI	CB1-CA1	2.03	1.56	1.54
2	E	317	0PI	C2-C3	3.17	1.58	1.50
2	E	317	0PI	P-OS	4.17	1.62	1.57

All (12) bond angle outliers are listed below:

Mol	Chain	Res	Type	Atoms	Z	Observed(°)	Ideal(°)
2	E	317	0PI	OS-P-O11	-6.36	104.90	115.71
2	E	317	0PI	C6-C5-C4	-4.02	114.30	120.19
2	E	317	0PI	CD2-CG-CB	-2.35	102.37	111.11
2	E	317	0PI	O2-C1-O1	-2.04	120.01	124.22
2	E	317	0PI	C7-C8-C3	-2.01	117.44	120.65
2	E	317	0PI	CB1-CA1-N1	2.06	115.61	110.48
2	E	317	0PI	O-C9-CA	2.26	123.31	119.52
2	E	317	0PI	O2-C2-C3	2.30	115.15	109.36
2	E	317	0PI	OS-CA-CB	3.22	112.58	106.30
2	E	317	0PI	C5-C4-C3	3.39	126.03	120.65
2	E	317	0PI	O1-C1-N	3.89	130.98	124.97
2	E	317	0PI	C2-O2-C1	4.04	125.54	115.91

There are no chirality outliers.

There are no torsion outliers.

There are no ring outliers.

1 monomer is involved in 18 short contacts:

Mol	Chain	Res	Type	Clashes	Symm-Clashes
2	E	317	0PI	18	0

5.7 Other polymers [i](#)

There are no such residues in this entry.

5.8 Polymer linkage issues [i](#)

There are no chain breaks in this entry.

6 Fit of model and data [i](#)

6.1 Protein, DNA and RNA chains [i](#)

In the following table, the column labelled ‘#RSRZ> 2’ contains the number (and percentage) of RSRZ outliers, followed by percent RSRZ outliers for the chain as percentile scores relative to all X-ray entries and entries of similar resolution. The OWAB column contains the minimum, median, 95th percentile and maximum values of the occupancy-weighted average B-factor per residue. The column labelled ‘Q< 0.9’ lists the number of (and percentage) of residues with an average occupancy less than 0.9.

Mol	Chain	Analysed	<RSRZ>	#RSRZ>2	OWAB(Å ²)	Q<0.9
1	E	214/316 (67%)	-0.56	5 (2%) 64 62	6, 11, 26, 36	0

All (5) RSRZ outliers are listed below:

Mol	Chain	Res	Type	RSRZ
1	E	249	THR	6.7
1	E	197	ILE	3.4
1	E	183	ASN	3.4
1	E	128	GLN	2.8
1	E	196	GLY	2.4

6.2 Non-standard residues in protein, DNA, RNA chains [i](#)

There are no non-standard protein/DNA/RNA residues in this entry.

6.3 Carbohydrates [i](#)

There are no carbohydrates in this entry.

6.4 Ligands [i](#)

In the following table, the Atoms column lists the number of modelled atoms in the group and the number defined in the chemical component dictionary. LLDF column lists the quality of electron density of the group with respect to its neighbouring residues in protein, DNA or RNA chains. The B-factors column lists the minimum, median, 95th percentile and maximum values of B factors of atoms in the group. The column labelled ‘Q< 0.9’ lists the number of atoms with occupancy less than 0.9.

Mol	Type	Chain	Res	Atoms	RSCC	RSR	LLDF	B-factors(Å ²)	Q<0.9
2	OPI	E	317	32/32	0.98	0.06	0.42	5,17,29,30	0

Continued on next page...

Continued from previous page...

Mol	Type	Chain	Res	Atoms	RSCC	RSR	LLDF	B-factors(\AA^2)	Q<0.9
3	CA	E	320	1/1	1.00	0.05	-0.46	11,11,11,11	0
4	ZN	E	322	1/1	1.00	0.05	-0.56	10,10,10,10	0
3	CA	E	319	1/1	1.00	0.05	-0.61	13,13,13,13	0
3	CA	E	321	1/1	0.99	0.04	-1.57	16,16,16,16	0
3	CA	E	318	1/1	1.00	0.03	-3.03	8,8,8,8	0

6.5 Other polymers [i](#)

There are no such residues in this entry.