



Full wwPDB X-ray Structure Validation Report ⓘ

Jan 31, 2016 – 10:26 PM GMT

PDB ID : 1TN6
Title : Protein Farnesyltransferase Complexed with a Rap2a Peptide Substrate and a FPP Analog at 1.8Å Resolution
Authors : Reid, T.S.; Terry, K.L.; Casey, P.J.; Beese, L.S.
Deposited on : 2004-06-11
Resolution : 1.80 Å(reported)

This is a Full wwPDB X-ray Structure Validation Report for a publicly released PDB entry.
We welcome your comments at validation@mail.wwpdb.org
A user guide is available at
<http://wwpdb.org/validation/2016/XrayValidationReportHelp>
with specific help available everywhere you see the ⓘ symbol.

The following versions of software and data (see [references ⓘ](#)) were used in the production of this report:

MolProbity : 4.02b-467
Mogul : 1.7 (RC4), CSD as536be (2015)
Xtriage (Phenix) : 1.9-1692
EDS : rb-20026688
Percentile statistics : 20151230.v01 (using entries in the PDB archive December 30th 2015)
Refmac : 5.8.0135
CCP4 : 6.5.0
Ideal geometry (proteins) : Engh & Huber (2001)
Ideal geometry (DNA, RNA) : Parkinson et al. (1996)
Validation Pipeline (wwPDB-VP) : trunk26865

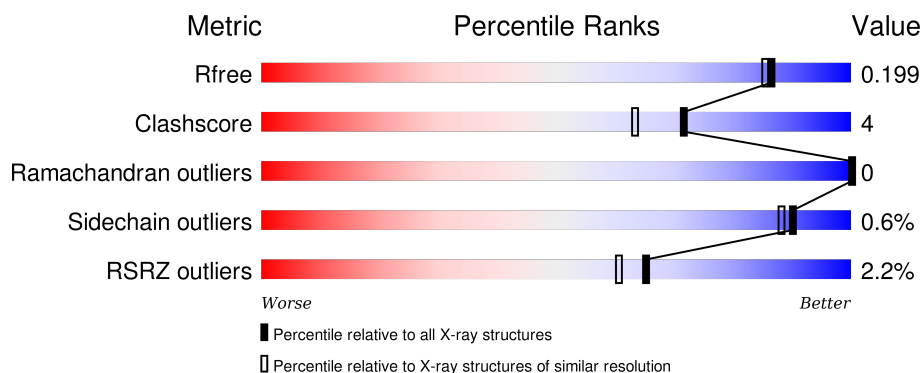
1 Overall quality at a glance

The following experimental techniques were used to determine the structure:

X-RAY DIFFRACTION

The reported resolution of this entry is 1.80 Å.

Percentile scores (ranging between 0-100) for global validation metrics of the entry are shown in the following graphic. The table shows the number of entries on which the scores are based.



Metric	Whole archive (#Entries)	Similar resolution (#Entries, resolution range(Å))
R_{free}	91344	4533 (1.80-1.80)
Clashscore	102246	5383 (1.80-1.80)
Ramachandran outliers	100387	5320 (1.80-1.80)
Sidechain outliers	100360	5319 (1.80-1.80)
RSRZ outliers	91569	4547 (1.80-1.80)

The table below summarises the geometric issues observed across the polymeric chains and their fit to the electron density. The red, orange, yellow and green segments on the lower bar indicate the fraction of residues that contain outliers for ≥ 3 , 2, 1 and 0 types of geometric quality criteria. A grey segment represents the fraction of residues that are not modelled. The numeric value for each fraction is indicated below the corresponding segment, with a dot representing fractions $\leq 5\%$. The upper red bar (where present) indicates the fraction of residues that have poor fit to the electron density. The numeric value is given above the bar.

Mol	Chain	Length	Quality of chain
1	A	382	<div> <div>2%</div> <div> <div></div> <div>75%</div> <div>7%</div> <div>18%</div> </div> </div>
2	B	437	<div> <div>%</div> <div> <div></div> <div>83%</div> <div>11%</div> <div>6%</div> </div> </div>
3	C	11	<div> <div>27%</div> <div> <div></div> <div>82%</div> <div>9%</div> <div>9%</div> </div> </div>

2 Entry composition

There are 8 unique types of molecules in this entry. The entry contains 6704 atoms, of which 0 are hydrogens and 0 are deuteriums.

In the tables below, the ZeroOcc column contains the number of atoms modelled with zero occupancy, the AltConf column contains the number of residues with at least one atom in alternate conformation and the Trace column contains the number of residues modelled with at most 2 atoms.

- Molecule 1 is a protein called Protein farnesyltransferase alpha subunit.

Mol	Chain	Residues	Atoms					ZeroOcc	AltConf	Trace
1	A	315	Total	C	N	O	S	0	0	0
			2683	1711	467	500	5			

There are 3 discrepancies between the modelled and reference sequences:

Chain	Residue	Modelled	Actual	Comment	Reference
A	380	GLU	-	INSERTION	UNP P49354
A	381	GLU	-	INSERTION	UNP P49354
A	382	PHE	-	INSERTION	UNP P49354

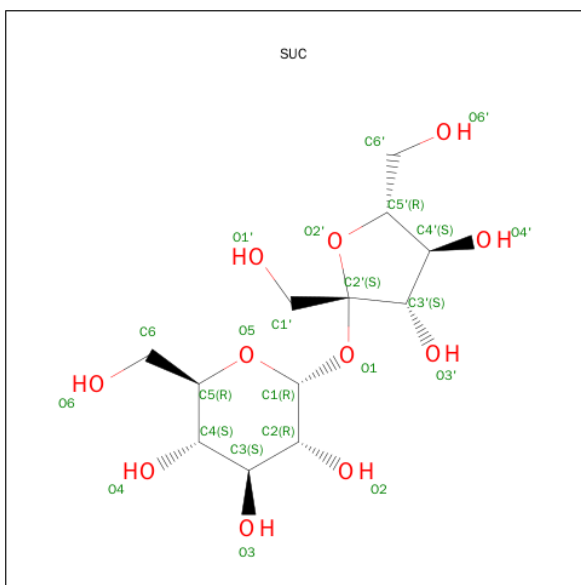
- Molecule 2 is a protein called Protein farnesyltransferase beta subunit.

Mol	Chain	Residues	Atoms					ZeroOcc	AltConf	Trace
2	B	410	Total	C	N	O	S	0	0	0
			3228	2065	552	589	22			

- Molecule 3 is a protein called peptide derived from the C-terminus of Rap2a.

Mol	Chain	Residues	Atoms					ZeroOcc	AltConf	Trace
3	C	11	Total	C	N	O	S	0	0	0
			78	44	13	20	1			

- Molecule 4 is SUGAR (SUCROSE) (three-letter code: SUC) (formula: C₁₂H₂₂O₁₁).

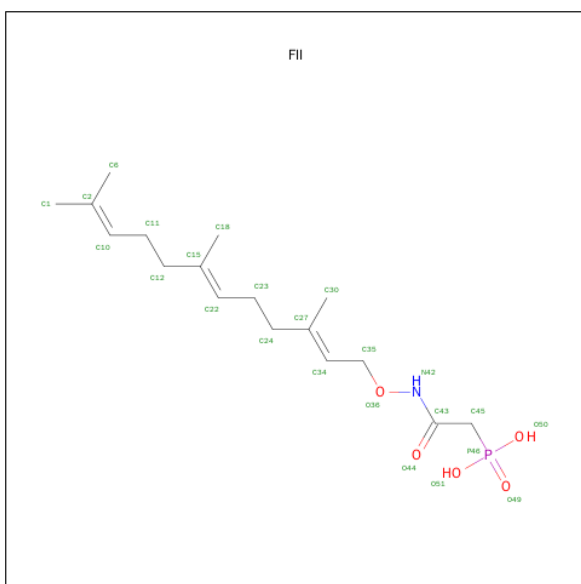


Mol	Chain	Residues	Atoms			ZeroOcc	AltConf
4	B	1	Total	C	O	0	0
			23	12	11		

- Molecule 5 is ZINC ION (three-letter code: ZN) (formula: Zn).

Mol	Chain	Residues	Atoms		ZeroOcc	AltConf
5	B	1	Total	Zn	0	0
			1	1		

- Molecule 6 is [(3,7,11-TRIMETHYL-DODECA-2,6,10-TRIENYLOXYCARBAMOYL)-METHYL]-PHOSPHONIC ACID (three-letter code: FII) (formula: C₁₇H₃₀NO₅P).



Mol	Chain	Residues	Atoms					ZeroOcc	AltConf
6	B	1	Total	C	N	O	P	0	0
			24	17	1	5	1		

- Molecule 7 is ACETIC ACID (three-letter code: ACY) (formula: C₂H₄O₂).



Mol	Chain	Residues	Atoms			ZeroOcc	AltConf
7	B	1	Total	C	O	0	0
			4	2	2		
7	A	1	Total	C	O	0	0
			4	2	2		

- Molecule 8 is water.

Mol	Chain	Residues	Atoms		ZeroOcc	AltConf
8	A	301	Total	O	0	0
			301	301		
8	B	348	Total	O	0	0
			348	348		
8	C	10	Total	O	0	0
			10	10		

4 Data and refinement statistics

Property	Value	Source
Space group	P 61	Depositor
Cell constants a, b, c, α , β , γ	178.47Å 178.47Å 64.70Å 90.00° 90.00° 120.00°	Depositor
Resolution (Å)	49.61 – 1.80 49.61 – 1.80	Depositor EDS
% Data completeness (in resolution range)	92.5 (49.61-1.80) 92.7 (49.61-1.80)	Depositor EDS
R_{merge}	(Not available)	Depositor
R_{sym}	0.05	Depositor
$\langle I/\sigma(I) \rangle$ ¹	3.23 (at 1.81Å)	Xtriage
Refinement program	CNS 1.0	Depositor
R, R_{free}	0.179 , 0.199 0.179 , 0.199	Depositor DCC
R_{free} test set	5027 reflections (5.00%)	DCC
Wilson B-factor (Å ²)	18.0	Xtriage
Anisotropy	0.039	Xtriage
Bulk solvent k_{sol} (e/Å ³), B_{sol} (Å ²)	0.40 , 51.8	EDS
Estimated twinning fraction	0.024 for h,-h-k,-l	Xtriage
L-test for twinning ²	$\langle L \rangle = 0.49$, $\langle L^2 \rangle = 0.32$	Xtriage
Outliers	0 of 100625 reflections	Xtriage
F_o, F_c correlation	0.95	EDS
Total number of atoms	6704	wwPDB-VP
Average B, all atoms (Å ²)	22.0	wwPDB-VP

Xtriage's analysis on translational NCS is as follows: *The largest off-origin peak in the Patterson function is 2.60% of the height of the origin peak. No significant pseudotranslation is detected.*

¹Intensities estimated from amplitudes.

²Theoretical values of $\langle |L| \rangle$, $\langle L^2 \rangle$ for acentric reflections are 0.5, 0.375 respectively for untwinned datasets, and 0.333, 0.2 for perfectly twinned datasets.

5 Model quality

5.1 Standard geometry

Bond lengths and bond angles in the following residue types are not validated in this section: ZN, FII, SUC, ACY

The Z score for a bond length (or angle) is the number of standard deviations the observed value is removed from the expected value. A bond length (or angle) with $|Z| > 5$ is considered an outlier worth inspection. RMSZ is the root-mean-square of all Z scores of the bond lengths (or angles).

Mol	Chain	Bond lengths		Bond angles	
		RMSZ	# Z >5	RMSZ	# Z >5
1	A	0.30	0/2750	0.52	0/3735
2	B	0.33	0/3317	0.59	0/4508
3	C	0.37	0/78	0.50	0/105
All	All	0.31	0/6145	0.56	0/8348

There are no bond length outliers.

There are no bond angle outliers.

There are no chirality outliers.

There are no planarity outliers.

5.2 Too-close contacts

In the following table, the Non-H and H(model) columns list the number of non-hydrogen atoms and hydrogen atoms in the chain respectively. The H(added) column lists the number of hydrogen atoms added and optimized by MolProbity. The Clashes column lists the number of clashes within the asymmetric unit, whereas Symm-Clashes lists symmetry related clashes.

Mol	Chain	Non-H	H(model)	H(added)	Clashes	Symm-Clashes
1	A	2683	0	2601	18	0
2	B	3228	0	3147	32	0
3	C	78	0	65	2	0
4	B	23	0	22	0	0
5	B	1	0	0	0	0
6	B	24	0	28	1	0
7	A	4	0	3	0	0
7	B	4	0	3	0	0
8	A	301	0	0	4	0
8	B	348	0	0	4	0

Continued on next page...

Continued from previous page...

Mol	Chain	Non-H	H(model)	H(added)	Clashes	Symm-Clashes
8	C	10	0	0	0	0
All	All	6704	0	5869	51	0

The all-atom clashscore is defined as the number of clashes found per 1000 atoms (including hydrogen atoms). The all-atom clashscore for this structure is 4.

All (51) close contacts within the same asymmetric unit are listed below, sorted by their clash magnitude.

Atom-1	Atom-2	Interatomic distance (Å)	Clash overlap (Å)
2:B:634:GLN:HE22	2:B:673:ASN:H	1.25	0.83
2:B:547:GLU:HG3	8:B:1969:HOH:O	1.84	0.74
2:B:918:LYS:HE3	8:B:1730:HOH:O	1.93	0.68
1:A:135:HIS:HD2	8:A:1875:HOH:O	1.76	0.67
1:A:109:ARG:HG3	8:A:1256:HOH:O	1.97	0.65
1:A:330:LYS:HE2	1:A:367:HIS:O	1.99	0.63
1:A:330:LYS:HE3	1:A:367:HIS:HB3	1.81	0.63
2:B:577:LYS:HD3	2:B:846:PRO:O	2.02	0.60
2:B:801:SER:O	2:B:805:ALA:HB3	2.02	0.59
2:B:634:GLN:NE2	2:B:673:ASN:H	1.99	0.58
1:A:316:VAL:O	1:A:320:GLU:HG3	2.03	0.57
1:A:303:GLN:N	1:A:304:PRO:HD2	2.20	0.56
1:A:335:ASN:O	1:A:339:GLU:HG3	2.06	0.56
1:A:298:GLN:O	1:A:302:LEU:HD23	2.05	0.56
2:B:771:LYS:HD2	2:B:772:SER:N	2.20	0.56
2:B:881:MET:O	2:B:882:LEU:HD12	2.06	0.55
2:B:739:ILE:HB	2:B:752:THR:HA	1.89	0.55
2:B:574:GLN:HB3	2:B:577:LYS:HD2	1.91	0.52
2:B:908:VAL:O	2:B:912:THR:HG23	2.09	0.51
2:B:701:VAL:HG12	2:B:751:TYR:CD2	2.46	0.51
2:B:753:PHE:HA	2:B:807:LEU:HD21	1.93	0.50
2:B:885:VAL:O	2:B:885:VAL:HG23	2.13	0.49
1:A:114:GLU:OE2	1:A:118:LYS:HE3	2.13	0.49
2:B:881:MET:C	2:B:882:LEU:HD12	2.32	0.48
2:B:635:SER:OG	2:B:637:GLU:HG2	2.14	0.48
2:B:516:SER:HB2	2:B:517:PRO:HD2	1.96	0.48
2:B:526:LEU:HD13	2:B:563:LYS:HB2	1.98	0.46
2:B:696:GLY:HA2	8:B:1901:HOH:O	2.15	0.46
2:B:692:LEU:HD23	2:B:699:VAL:CG2	2.46	0.45
1:A:58:LEU:HD12	1:A:125:GLU:HB3	1.99	0.45
1:A:135:HIS:CD2	8:A:1875:HOH:O	2.61	0.45
2:B:858:ARG:O	3:C:1999:ASP:HA	2.17	0.44

Continued on next page...

Continued from previous page...

Atom-1	Atom-2	Interatomic distance (Å)	Clash overlap (Å)
1:A:330:LYS:NZ	1:A:369:THR:OG1	2.48	0.43
2:B:905:PRO:HD2	8:B:1546:HOH:O	2.19	0.43
2:B:589:LEU:CD1	2:B:603:LEU:HD13	2.48	0.43
2:B:652:PRO:HD3	3:C:2009:GLN:OE1	2.18	0.43
1:A:328:ASP:O	1:A:329:ASN:HB2	2.18	0.43
2:B:551:VAL:O	2:B:555:ILE:HG12	2.19	0.43
1:A:112:ARG:HA	1:A:140:LEU:CD2	2.49	0.42
1:A:225:GLN:HG2	8:A:1286:HOH:O	2.20	0.42
2:B:852:ASP:OD1	2:B:852:ASP:C	2.58	0.41
2:B:806:GLY:O	2:B:809:PRO:HD2	2.20	0.41
2:B:808:LEU:HD13	2:B:808:LEU:HA	1.93	0.41
1:A:96:PHE:HA	1:A:126:LEU:HD13	2.03	0.41
1:A:77:PRO:HB2	1:A:101:ASP:HB3	2.03	0.41
1:A:311:LEU:HD23	1:A:311:LEU:C	2.41	0.41
6:B:1:FII:H301	6:B:1:FII:H352	1.85	0.41
2:B:701:VAL:HG12	2:B:751:TYR:HD2	1.86	0.40
2:B:651:ALA:HB3	2:B:652:PRO:CD	2.51	0.40
2:B:850:LEU:HB2	2:B:863:THR:HA	2.03	0.40
2:B:797:ASP:HB3	2:B:800:TYR:CD1	2.56	0.40

There are no symmetry-related clashes.

5.3 Torsion angles [i](#)

5.3.1 Protein backbone [i](#)

In the following table, the Percentiles column shows the percent Ramachandran outliers of the chain as a percentile score with respect to all X-ray entries followed by that with respect to entries of similar resolution.

The Analysed column shows the number of residues for which the backbone conformation was analysed, and the total number of residues.

Mol	Chain	Analysed	Favoured	Allowed	Outliers	Percentiles	
1	A	313/382 (82%)	302 (96%)	11 (4%)	0	100	100
2	B	408/437 (93%)	400 (98%)	8 (2%)	0	100	100
3	C	9/11 (82%)	8 (89%)	1 (11%)	0	100	100
All	All	730/830 (88%)	710 (97%)	20 (3%)	0	100	100

There are no Ramachandran outliers to report.

5.3.2 Protein sidechains ⓘ

In the following table, the Percentiles column shows the percent sidechain outliers of the chain as a percentile score with respect to all X-ray entries followed by that with respect to entries of similar resolution.

The Analysed column shows the number of residues for which the sidechain conformation was analysed, and the total number of residues.

Mol	Chain	Analysed	Rotameric	Outliers	Percentiles	
1	A	294/344 (86%)	293 (100%)	1 (0%)	94	94
2	B	346/370 (94%)	344 (99%)	2 (1%)	90	88
3	C	9/9 (100%)	8 (89%)	1 (11%)	8	1
All	All	649/723 (90%)	645 (99%)	4 (1%)	90	88

All (4) residues with a non-rotameric sidechain are listed below:

Mol	Chain	Res	Type
1	A	55	PHE
2	B	620	GLN
2	B	771	LYS
3	C	1999	ASP

Some sidechains can be flipped to improve hydrogen bonding and reduce clashes. All (4) such sidechains are listed below:

Mol	Chain	Res	Type
1	A	221	GLN
1	A	329	ASN
2	B	634	GLN
2	B	818	GLN

5.3.3 RNA ⓘ

There are no RNA molecules in this entry.

5.4 Non-standard residues in protein, DNA, RNA chains ⓘ

There are no non-standard protein/DNA/RNA residues in this entry.

5.5 Carbohydrates [i](#)

There are no carbohydrates in this entry.

5.6 Ligand geometry [i](#)

Of 5 ligands modelled in this entry, 1 is monoatomic - leaving 4 for Mogul analysis.

In the following table, the Counts columns list the number of bonds (or angles) for which Mogul statistics could be retrieved, the number of bonds (or angles) that are observed in the model and the number of bonds (or angles) that are defined in the chemical component dictionary. The Link column lists molecule types, if any, to which the group is linked. The Z score for a bond length (or angle) is the number of standard deviations the observed value is removed from the expected value. A bond length (or angle) with $|Z| > 2$ is considered an outlier worth inspection. RMSZ is the root-mean-square of all Z scores of the bond lengths (or angles).

Mol	Type	Chain	Res	Link	Bond lengths			Bond angles		
					Counts	RMSZ	# $ Z > 2$	Counts	RMSZ	# $ Z > 2$
7	ACY	A	3004	-	1,3,3	2.64	1 (100%)	0,3,3	0.00	-
6	FII	B	1	-	23,23,23	1.51	5 (21%)	27,29,29	1.14	2 (7%)
7	ACY	B	3001	-	1,3,3	2.45	1 (100%)	0,3,3	0.00	-
4	SUC	B	3010	-	24,24,24	1.48	3 (12%)	36,36,36	0.87	2 (5%)

In the following table, the Chirals column lists the number of chiral outliers, the number of chiral centers analysed, the number of these observed in the model and the number defined in the chemical component dictionary. Similar counts are reported in the Torsion and Rings columns. '-' means no outliers of that kind were identified.

Mol	Type	Chain	Res	Link	Chirals	Torsions	Rings
7	ACY	A	3004	-	-	0/0/0/0	0/0/0/0
6	FII	B	1	-	-	0/23/24/24	0/0/0/0
7	ACY	B	3001	-	-	0/0/0/0	0/0/0/0
4	SUC	B	3010	-	-	0/12/51/51	0/2/2/2

All (10) bond length outliers are listed below:

Mol	Chain	Res	Type	Atoms	Z	Observed(Å)	Ideal(Å)
6	B	1	FII	P46-O50	-4.15	1.44	1.54
6	B	1	FII	P46-O51	-2.95	1.47	1.54
6	B	1	FII	P46-O49	-2.03	1.45	1.50
4	B	3010	SUC	O5-C1	2.06	1.47	1.41
6	B	1	FII	P46-C45	2.19	1.83	1.79
7	B	3001	ACY	CH3-C	2.45	1.52	1.48

Continued on next page...

Continued from previous page...

Mol	Chain	Res	Type	Atoms	Z	Observed(Å)	Ideal(Å)
7	A	3004	ACY	CH3-C	2.64	1.52	1.48
6	B	1	FII	C22-C15	2.67	1.38	1.33
4	B	3010	SUC	C4-C5	2.68	1.58	1.53
4	B	3010	SUC	C3-C2	5.10	1.65	1.52

All (4) bond angle outliers are listed below:

Mol	Chain	Res	Type	Atoms	Z	Observed(°)	Ideal(°)
6	B	1	FII	C18-C15-C12	-2.18	112.08	115.41
4	B	3010	SUC	O3-C3-C2	-2.08	105.66	110.34
6	B	1	FII	O50-P46-C45	2.05	111.51	107.01
4	B	3010	SUC	C1-O5-C5	2.07	117.76	113.75

There are no chirality outliers.

There are no torsion outliers.

There are no ring outliers.

1 monomer is involved in 1 short contact:

Mol	Chain	Res	Type	Clashes	Symm-Clashes
6	B	1	FII	1	0

5.7 Other polymers [i](#)

There are no such residues in this entry.

5.8 Polymer linkage issues [i](#)

There are no chain breaks in this entry.

6 Fit of model and data [i](#)

6.1 Protein, DNA and RNA chains [i](#)

In the following table, the column labelled ‘#RSRZ> 2’ contains the number (and percentage) of RSRZ outliers, followed by percent RSRZ outliers for the chain as percentile scores relative to all X-ray entries and entries of similar resolution. The OWAB column contains the minimum, median, 95th percentile and maximum values of the occupancy-weighted average B-factor per residue. The column labelled ‘Q< 0.9’ lists the number of (and percentage) of residues with an average occupancy less than 0.9.

Mol	Chain	Analysed	<RSRZ>	#RSRZ>2	OWAB(Å ²)	Q<0.9
1	A	315/382 (82%)	-0.25	9 (2%) 55 49	14, 23, 38, 54	0
2	B	410/437 (93%)	-0.33	4 (0%) 84 82	12, 18, 30, 42	0
3	C	11/11 (100%)	1.29	3 (27%) 1 0	21, 45, 56, 57	0
All	All	736/830 (88%)	-0.27	16 (2%) 65 60	12, 20, 35, 57	0

All (16) RSRZ outliers are listed below:

Mol	Chain	Res	Type	RSRZ
1	A	55	PHE	6.9
1	A	304	PRO	5.6
2	B	515	SER	4.1
1	A	307	SER	4.0
1	A	306	HIS	3.8
1	A	302	LEU	3.5
1	A	369	THR	3.5
1	A	303	GLN	3.0
3	C	2002	THR	2.7
3	C	2003	ALA	2.6
3	C	2000	ASP	2.6
2	B	924	GLU	2.4
2	B	620	GLN	2.2
2	B	880	ALA	2.1
1	A	301	ASP	2.1
1	A	109	ARG	2.0

6.2 Non-standard residues in protein, DNA, RNA chains [i](#)

There are no non-standard protein/DNA/RNA residues in this entry.

6.3 Carbohydrates [i](#)

There are no carbohydrates in this entry.

6.4 Ligands [i](#)

In the following table, the Atoms column lists the number of modelled atoms in the group and the number defined in the chemical component dictionary. LLDF column lists the quality of electron density of the group with respect to its neighbouring residues in protein, DNA or RNA chains. The B-factors column lists the minimum, median, 95th percentile and maximum values of B factors of atoms in the group. The column labelled 'Q< 0.9' lists the number of atoms with occupancy less than 0.9.

Mol	Type	Chain	Res	Atoms	RSCC	RSR	LLDF	B-factors(\AA^2)	Q<0.9
6	FII	B	1	24/24	0.87	0.18	1.86	16,25,29,31	0
7	ACY	B	3001	4/4	0.82	0.15	1.26	37,37,38,38	0
7	ACY	A	3004	4/4	0.97	0.09	-0.40	23,23,24,24	0
4	SUC	B	3010	23/23	0.94	0.09	-0.69	21,24,26,26	0
5	ZN	B	1001	1/1	1.00	0.09	-0.93	16,16,16,16	0

6.5 Other polymers [i](#)

There are no such residues in this entry.