



Full wwPDB X-ray Structure Validation Report ⓘ

Feb 1, 2016 – 05:47 AM GMT

PDB ID : 2TOD
Title : ORNITHINE DECARBOXYLASE FROM TRYPANOSOMA BRUCEI K69A
MUTANT IN COMPLEX WITH ALPHA-DIFLUOROMETHYLORNITHIN
E
Authors : Grishin, N.V.; Osterman, A.L.; Brooks, H.B.; Phillips, M.A.; Goldsmith, E.J.
Deposited on : 1999-05-18
Resolution : 2.00 Å(reported)

This is a Full wwPDB X-ray Structure Validation Report for a publicly released PDB entry.
We welcome your comments at validation@mail.wwpdb.org
A user guide is available at
<http://wwpdb.org/validation/2016/XrayValidationReportHelp>
with specific help available everywhere you see the ⓘ symbol.

The following versions of software and data (see [references ⓘ](#)) were used in the production of this report:

MolProbity : 4.02b-467
Mogul : 1.7 (RC4), CSD as536be (2015)
Xtriage (Phenix) : **NOT EXECUTED**
EDS : **NOT EXECUTED**
Percentile statistics : 20151230.v01 (using entries in the PDB archive December 30th 2015)
Ideal geometry (proteins) : Engh & Huber (2001)
Ideal geometry (DNA, RNA) : Parkinson et al. (1996)
Validation Pipeline (wwPDB-VP) : trunk26865

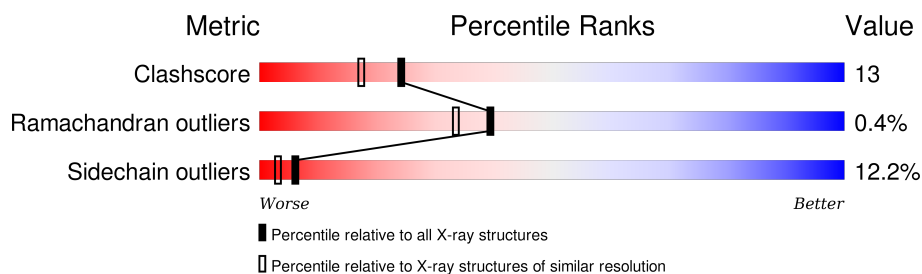
1 Overall quality at a glance

The following experimental techniques were used to determine the structure:

X-RAY DIFFRACTION

The reported resolution of this entry is 2.00 Å.

Percentile scores (ranging between 0-100) for global validation metrics of the entry are shown in the following graphic. The table shows the number of entries on which the scores are based.



Metric	Whole archive (#Entries)	Similar resolution (#Entries, resolution range(Å))
Clashscore	102246	7340 (2.00-2.00)
Ramachandran outliers	100387	7248 (2.00-2.00)
Sidechain outliers	100360	7247 (2.00-2.00)

The table below summarises the geometric issues observed across the polymeric chains and their fit to the electron density. The red, orange, yellow and green segments on the lower bar indicate the fraction of residues that contain outliers for ≥ 3 , 2, 1 and 0 types of geometric quality criteria. A grey segment represents the fraction of residues that are not modelled. The numeric value for each fraction is indicated below the corresponding segment, with a dot representing fractions $\leq 5\%$. The upper red bar (where present) indicates the fraction of residues that have poor fit to the electron density. The numeric value is given above the bar.

Note EDS was not executed.

Mol	Chain	Length	Quality of chain
1	A	425	
1	B	425	
1	C	425	
1	D	425	

2 Entry composition

There are 4 unique types of molecules in this entry. The entry contains 11966 atoms, of which 0 are hydrogens and 0 are deuteriums.

In the tables below, the ZeroOcc column contains the number of atoms modelled with zero occupancy, the AltConf column contains the number of residues with at least one atom in alternate conformation and the Trace column contains the number of residues modelled with at most 2 atoms.

- Molecule 1 is a protein called PROTEIN (ORNITHINE DECARBOXYLASE).

Mol	Chain	Residues	Atoms					ZeroOcc	AltConf	Trace
1	A	353	Total	C	N	O	S	0	0	0
			2754	1772	456	511	15			
1	B	352	Total	C	N	O	S	0	0	0
			2747	1767	455	510	15			
1	C	353	Total	C	N	O	S	0	0	0
			2754	1772	456	511	15			
1	D	353	Total	C	N	O	S	0	0	0
			2754	1772	456	511	15			

There are 8 discrepancies between the modelled and reference sequences:

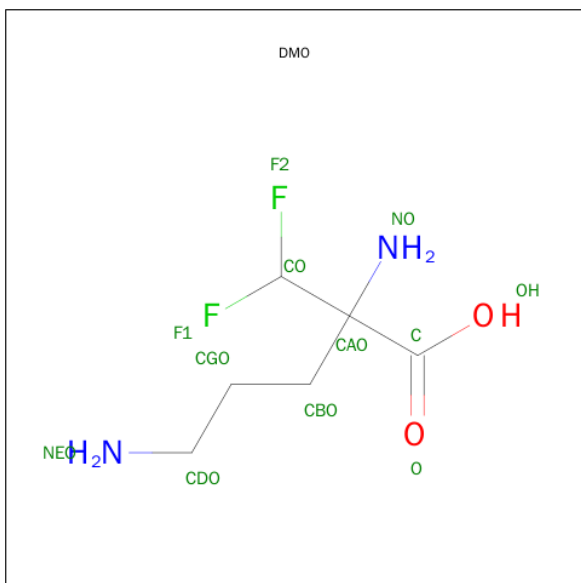
Chain	Residue	Modelled	Actual	Comment	Reference
A	1	GLY	LYS	ENGINEERED	UNP P07805
A	2	ALA	SER	ENGINEERED	UNP P07805
B	1	GLY	LYS	ENGINEERED	UNP P07805
B	2	ALA	SER	ENGINEERED	UNP P07805
C	1	GLY	LYS	ENGINEERED	UNP P07805
C	2	ALA	SER	ENGINEERED	UNP P07805
D	1	GLY	LYS	ENGINEERED	UNP P07805
D	2	ALA	SER	ENGINEERED	UNP P07805

- Molecule 2 is PYRIDOXAL-5'-PHOSPHATE (three-letter code: PLP) (formula: C₈H₁₀NO₆P).



Mol	Chain	Residues	Atoms					ZeroOcc	AltConf
2	B	1	Total	C	N	O	P	0	0
			15	8	1	5	1		
2	A	1	Total	C	N	O	P	0	0
			15	8	1	5	1		
2	D	1	Total	C	N	O	P	0	0
			15	8	1	5	1		
2	C	1	Total	C	N	O	P	0	0
			15	8	1	5	1		

- Molecule 3 is ALPHA-DIFLUOROMETHYLORNITHINE (three-letter code: DMO) (formula: $C_6H_{12}F_2N_2O_2$).



Mol	Chain	Residues	Atoms	ZeroOcc	AltConf
3	A	1	Total C N 7 5 2	0	0
3	B	1	Total C N 7 5 2	0	0
3	C	1	Total C N 7 5 2	0	0
3	D	1	Total C N 7 5 2	0	0

- Molecule 4 is water.

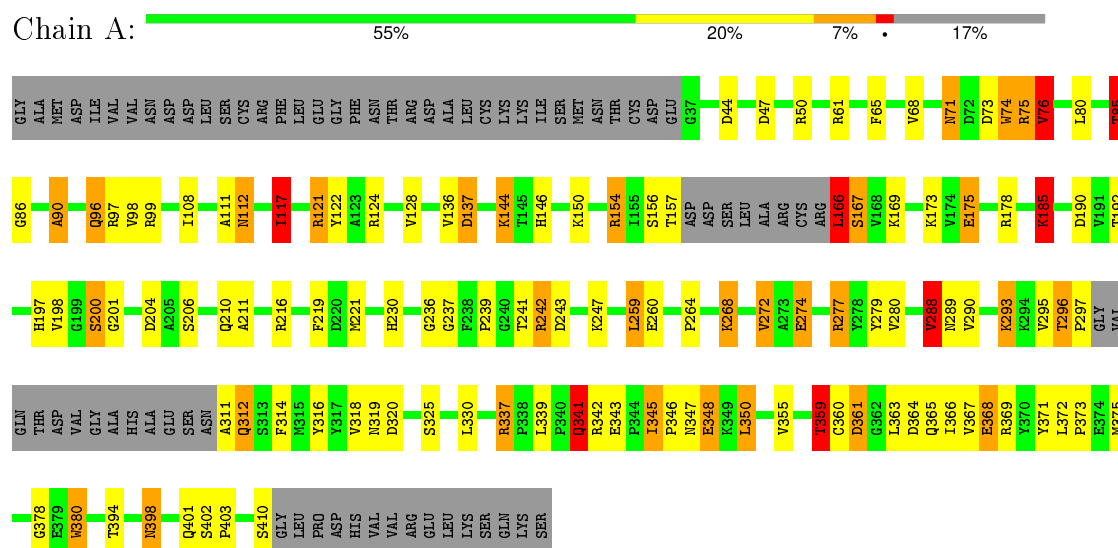
Mol	Chain	Residues	Atoms	ZeroOcc	AltConf
4	A	233	Total O 233 233	0	0
4	B	212	Total O 212 212	0	0
4	C	206	Total O 206 206	0	0
4	D	218	Total O 218 218	0	0

3 Residue-property plots

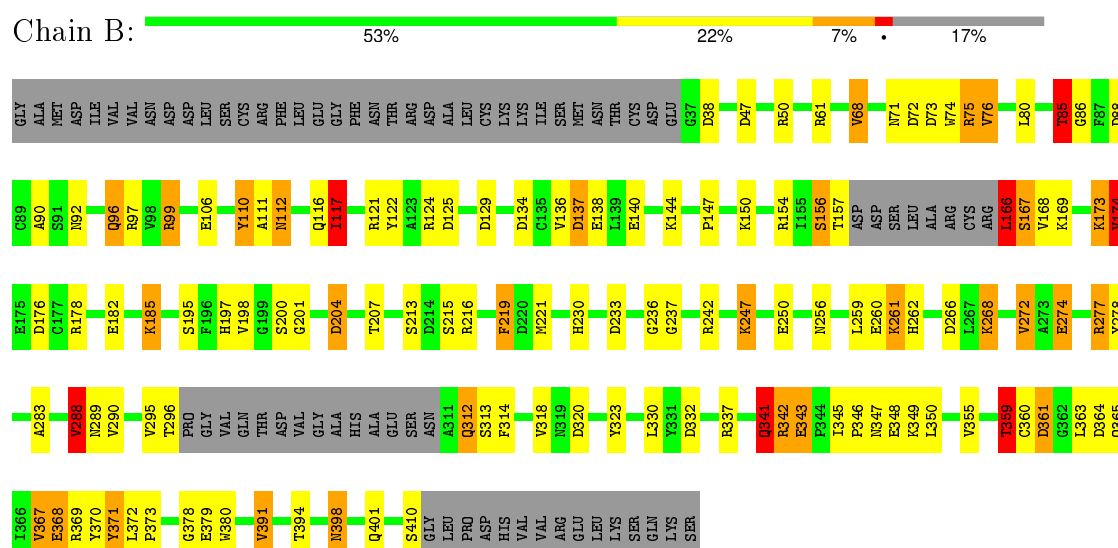
These plots are drawn for all protein, RNA and DNA chains in the entry. The first graphic for a chain summarises the proportions of errors displayed in the second graphic. The second graphic shows the sequence view annotated by issues in geometry and electron density. Residues are color-coded according to the number of geometric quality criteria for which they contain at least one outlier: green = 0, yellow = 1, orange = 2 and red = 3 or more. A red dot above a residue indicates a poor fit to the electron density ($RSRZ > 2$). Stretches of 2 or more consecutive residues without any outlier are shown as a green connector. Residues present in the sample, but not in the model, are shown in grey.

Note EDS was not executed.

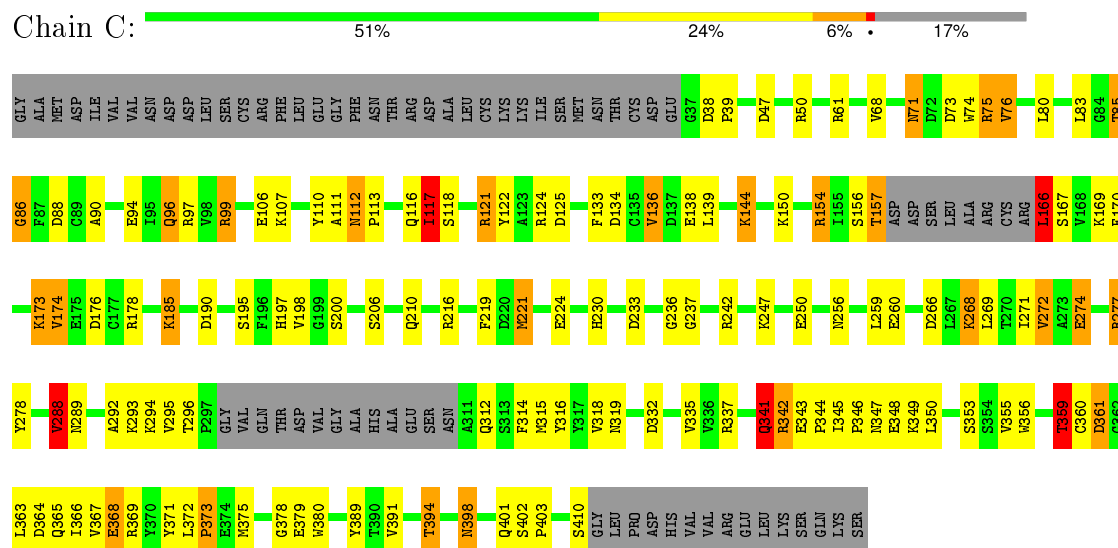
• Molecule 1: PROTEIN (ORNITHINE DECARBOXYLASE)



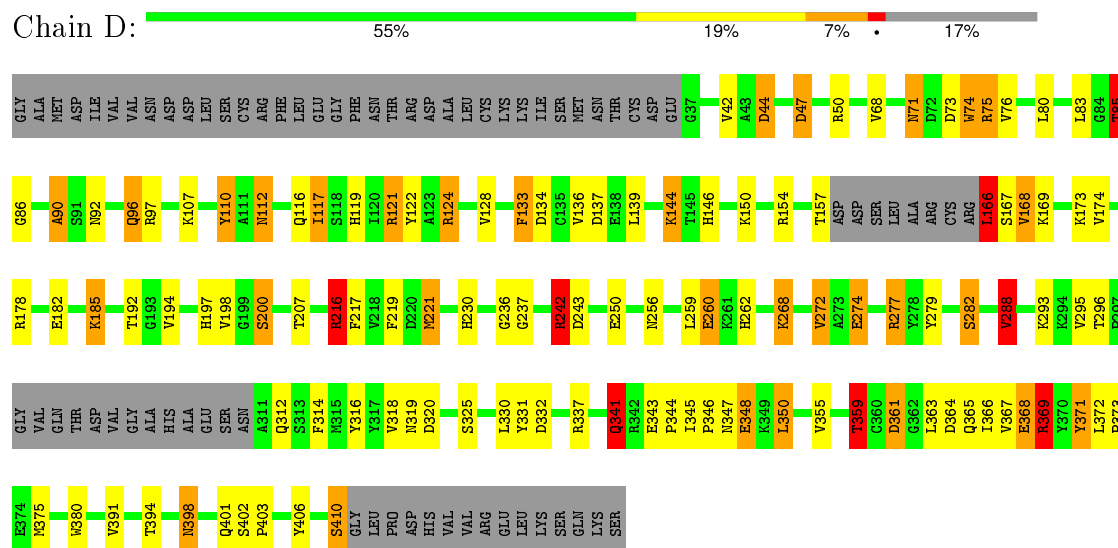
• Molecule 1: PROTEIN (ORNITHINE DECARBOXYLASE)



• Molecule 1: PROTEIN (ORNITHINE DECARBOXYLASE)



• Molecule 1: PROTEIN (ORNITHINE DECARBOXYLASE)



4 Data and refinement statistics

Xtriage (Phenix) and EDS were not executed - this section will therefore be incomplete.

Property	Value	Source
Space group	P 1 21 1	Depositor
Cell constants a, b, c, α , β , γ	66.80 Å 154.50 Å 77.10 Å 90.00° 90.58° 90.00°	Depositor
Resolution (Å)	8.00 – 2.00	Depositor
% Data completeness (in resolution range)	96.2 (8.00-2.00)	Depositor
R_{merge}	0.09	Depositor
R_{sym}	(Not available)	Depositor
Refinement program	REFMAC, X-PLOR, CNS	Depositor
R, R_{free}	0.212 , 0.270	Depositor
Estimated twinning fraction	No twinning to report.	Xtriage
Total number of atoms	11966	wwPDB-VP
Average B, all atoms (Å ²)	38.0	wwPDB-VP

5 Model quality [i](#)

5.1 Standard geometry [i](#)

Bond lengths and bond angles in the following residue types are not validated in this section: DMO, PLP

The Z score for a bond length (or angle) is the number of standard deviations the observed value is removed from the expected value. A bond length (or angle) with $|Z| > 5$ is considered an outlier worth inspection. RMSZ is the root-mean-square of all Z scores of the bond lengths (or angles).

Mol	Chain	Bond lengths		Bond angles	
		RMSZ	$\# Z > 5$	RMSZ	$\# Z > 5$
1	A	0.83	0/2823	1.77	66/3835 (1.7%)
1	B	0.81	0/2815	1.75	70/3823 (1.8%)
1	C	0.81	0/2823	1.79	61/3835 (1.6%)
1	D	0.84	1/2823 (0.0%)	1.71	51/3835 (1.3%)
All	All	0.82	1/11284 (0.0%)	1.76	248/15328 (1.6%)

Chiral center outliers are detected by calculating the chiral volume of a chiral center and verifying if the center is modelled as a planar moiety or with the opposite hand. A planarity outlier is detected by checking planarity of atoms in a peptide group, atoms in a mainchain group or atoms of a sidechain that are expected to be planar.

Mol	Chain	#Chirality outliers	#Planarity outliers
1	A	0	2
1	B	0	1
1	D	0	1
All	All	0	4

All (1) bond length outliers are listed below:

Mol	Chain	Res	Type	Atoms	Z	Observed(Å)	Ideal(Å)
1	D	282	SER	CB-OG	-5.75	1.34	1.42

All (248) bond angle outliers are listed below:

Mol	Chain	Res	Type	Atoms	Z	Observed(°)	Ideal(°)
1	B	216	ARG	NE-CZ-NH2	-18.79	110.90	120.30
1	A	216	ARG	NE-CZ-NH1	16.62	128.61	120.30
1	A	50	ARG	CD-NE-CZ	15.92	145.89	123.60
1	D	369	ARG	NE-CZ-NH1	15.44	128.02	120.30
1	C	99	ARG	NE-CZ-NH2	-15.33	112.64	120.30

Continued on next page...

Continued from previous page...

Mol	Chain	Res	Type	Atoms	Z	Observed(°)	Ideal(°)
1	A	178	ARG	NE-CZ-NH1	14.93	127.76	120.30
1	A	216	ARG	NE-CZ-NH2	-13.94	113.33	120.30
1	C	216	ARG	NE-CZ-NH2	-13.28	113.66	120.30
1	C	341	GLN	CA-CB-CG	13.15	142.34	113.40
1	B	341	GLN	CA-CB-CG	13.01	142.01	113.40
1	B	134	ASP	CB-CG-OD2	12.42	129.48	118.30
1	A	47	ASP	CB-CG-OD2	12.40	129.46	118.30
1	D	216	ARG	NE-CZ-NH1	11.92	126.26	120.30
1	C	75	ARG	NE-CZ-NH1	11.38	125.99	120.30
1	D	216	ARG	NE-CZ-NH2	-11.30	114.65	120.30
1	D	341	GLN	CA-CB-CG	11.14	137.91	113.40
1	D	369	ARG	CD-NE-CZ	10.55	138.37	123.60
1	C	221	MET	CA-CB-CG	10.54	131.21	113.30
1	D	369	ARG	NE-CZ-NH2	-10.50	115.05	120.30
1	C	110	TYR	CB-CG-CD2	-10.32	114.81	121.00
1	C	216	ARG	CD-NE-CZ	10.12	137.77	123.60
1	D	47	ASP	CB-CG-OD2	9.96	127.26	118.30
1	C	75	ARG	CD-NE-CZ	9.93	137.51	123.60
1	C	124	ARG	NE-CZ-NH1	9.92	125.26	120.30
1	D	316	TYR	CB-CG-CD1	9.90	126.94	121.00
1	C	342	ARG	NE-CZ-NH2	9.66	125.13	120.30
1	C	124	ARG	CD-NE-CZ	9.63	137.08	123.60
1	A	272	VAL	CA-CB-CG1	9.29	124.83	110.90
1	C	216	ARG	NE-CZ-NH1	9.25	124.93	120.30
1	D	124	ARG	NE-CZ-NH1	9.23	124.92	120.30
1	A	216	ARG	CD-NE-CZ	9.23	136.52	123.60
1	A	274	GLU	OE1-CD-OE2	-9.13	112.35	123.30
1	B	277	ARG	NE-CZ-NH1	9.10	124.85	120.30
1	C	134	ASP	CB-CG-OD2	9.01	126.40	118.30
1	A	221	MET	CA-CB-CG	8.98	128.57	113.30
1	C	178	ARG	NE-CZ-NH1	8.95	124.77	120.30
1	B	221	MET	CA-CB-CG	8.87	128.38	113.30
1	A	97	ARG	NE-CZ-NH2	-8.82	115.89	120.30
1	D	216	ARG	CD-NE-CZ	8.82	135.96	123.60
1	D	282	SER	CB-CA-C	-8.75	93.48	110.10
1	D	316	TYR	CB-CG-CD2	-8.70	115.78	121.00
1	B	182	GLU	OE1-CD-OE2	-8.70	112.86	123.30
1	A	277	ARG	NE-CZ-NH1	8.69	124.65	120.30
1	A	50	ARG	NE-CZ-NH1	8.65	124.62	120.30
1	A	99	ARG	NE-CZ-NH2	-8.63	115.99	120.30
1	B	47	ASP	CB-CG-OD2	8.59	126.03	118.30
1	D	97	ARG	NE-CZ-NH2	-8.55	116.03	120.30

Continued on next page...

Continued from previous page...

Mol	Chain	Res	Type	Atoms	Z	Observed(°)	Ideal(°)
1	B	361	ASP	CB-CG-OD1	8.51	125.96	118.30
1	B	166	LEU	CA-CB-CG	8.48	134.81	115.30
1	D	221	MET	CA-CB-CG	8.48	127.72	113.30
1	A	61	ARG	NE-CZ-NH1	-8.46	116.07	120.30
1	C	272	VAL	CA-CB-CG1	8.46	123.59	110.90
1	A	178	ARG	NH1-CZ-NH2	-8.45	110.11	119.40
1	D	134	ASP	CB-CG-OD2	8.39	125.85	118.30
1	D	288	VAL	N-CA-CB	-8.36	93.12	111.50
1	A	320	ASP	CB-CG-OD1	8.33	125.80	118.30
1	A	124	ARG	NE-CZ-NH1	8.31	124.45	120.30
1	B	272	VAL	CA-CB-CG1	8.30	123.34	110.90
1	D	124	ARG	NE-CZ-NH2	-8.29	116.16	120.30
1	A	316	TYR	CB-CG-CD1	8.26	125.96	121.00
1	A	341	GLN	CA-CB-CG	8.26	131.56	113.40
1	D	96	GLN	CA-CB-CG	8.25	131.56	113.40
1	C	332	ASP	CB-CG-OD2	8.21	125.69	118.30
1	A	369	ARG	NE-CZ-NH1	8.18	124.39	120.30
1	A	288	VAL	N-CA-CB	-8.16	93.55	111.50
1	B	110	TYR	CB-CG-CD2	-8.11	116.14	121.00
1	B	96	GLN	CA-CB-CG	8.10	131.22	113.40
1	C	277	ARG	NE-CZ-NH1	8.06	124.33	120.30
1	A	242	ARG	C-N-CA	8.05	141.82	121.70
1	B	124	ARG	NE-CZ-NH1	7.99	124.30	120.30
1	D	50	ARG	NE-CZ-NH2	-7.99	116.31	120.30
1	C	361	ASP	CB-CG-OD2	7.96	125.46	118.30
1	C	110	TYR	CB-CG-CD1	7.95	125.77	121.00
1	B	359	THR	N-CA-CB	-7.92	95.24	110.30
1	A	355	VAL	CA-CB-CG1	7.79	122.58	110.90
1	C	47	ASP	CB-CG-OD1	7.77	125.29	118.30
1	B	370	TYR	CB-CG-CD2	7.76	125.66	121.00
1	B	50	ARG	CD-NE-CZ	7.70	134.37	123.60
1	B	99	ARG	NE-CZ-NH2	-7.68	116.46	120.30
1	C	125	ASP	CB-CG-OD2	7.61	125.15	118.30
1	D	272	VAL	CA-CB-CG1	7.56	122.24	110.90
1	B	219	PHE	CB-CG-CD1	-7.55	115.51	120.80
1	C	359	THR	CA-CB-CG2	7.54	122.95	112.40
1	A	121	ARG	NE-CZ-NH2	-7.47	116.56	120.30
1	D	272	VAL	N-CA-CB	-7.46	95.09	111.50
1	C	94	GLU	OE1-CD-OE2	-7.45	114.36	123.30
1	A	316	TYR	CB-CG-CD2	-7.45	116.53	121.00
1	C	359	THR	N-CA-CB	-7.44	96.17	110.30
1	B	261	LYS	CB-CG-CD	-7.37	92.44	111.60

Continued on next page...

Continued from previous page...

Mol	Chain	Res	Type	Atoms	Z	Observed(°)	Ideal(°)
1	D	355	VAL	CA-CB-CG1	7.36	121.94	110.90
1	D	178	ARG	NE-CZ-NH2	7.31	123.95	120.30
1	A	166	LEU	CA-CB-CG	7.30	132.09	115.30
1	A	96	GLN	CA-CB-CG	7.28	129.41	113.40
1	B	277	ARG	NE-CZ-NH2	-7.25	116.67	120.30
1	B	75	ARG	CD-NE-CZ	7.25	133.74	123.60
1	A	154	ARG	NE-CZ-NH2	-7.22	116.69	120.30
1	C	166	LEU	CA-CB-CG	7.21	131.89	115.30
1	C	138	GLU	OE1-CD-OE2	-7.20	114.66	123.30
1	B	138	GLU	OE1-CD-OE2	-7.19	114.67	123.30
1	B	288	VAL	N-CA-CB	-7.19	95.69	111.50
1	D	359	THR	N-CA-CB	-7.11	96.79	110.30
1	A	50	ARG	NE-CZ-NH2	-7.09	116.76	120.30
1	B	360	CYS	CA-CB-SG	7.06	126.71	114.00
1	A	85	THR	N-CA-CB	-7.05	96.91	110.30
1	C	288	VAL	N-CA-CB	-7.00	96.09	111.50
1	D	274	GLU	OE1-CD-OE2	-6.98	114.92	123.30
1	B	125	ASP	CB-CG-OD2	6.97	124.58	118.30
1	A	369	ARG	NE-CZ-NH2	-6.97	116.82	120.30
1	A	359	THR	N-CA-CB	-6.96	97.07	110.30
1	B	97	ARG	NE-CZ-NH1	-6.92	116.84	120.30
1	B	320	ASP	CB-CG-OD1	6.91	124.52	118.30
1	D	242	ARG	C-N-CA	6.90	138.95	121.70
1	C	190	ASP	CB-CG-OD1	6.88	124.50	118.30
1	B	110	TYR	CB-CG-CD1	6.87	125.12	121.00
1	C	292	ALA	N-CA-CB	6.85	119.69	110.10
1	C	272	VAL	N-CA-CB	-6.82	96.49	111.50
1	A	178	ARG	CD-NE-CZ	6.73	133.02	123.60
1	D	85	THR	N-CA-CB	-6.71	97.54	110.30
1	B	290	VAL	CA-CB-CG2	6.68	120.93	110.90
1	B	370	TYR	CB-CG-CD1	-6.68	116.99	121.00
1	C	178	ARG	CD-NE-CZ	6.68	132.95	123.60
1	B	178	ARG	CD-NE-CZ	6.64	132.90	123.60
1	B	216	ARG	NH1-CZ-NH2	6.64	126.70	119.40
1	A	277	ARG	NE-CZ-NH2	-6.61	117.00	120.30
1	D	110	TYR	CB-CG-CD1	6.59	124.96	121.00
1	A	68	VAL	CA-CB-CG2	6.59	120.79	110.90
1	B	124	ARG	CD-NE-CZ	6.55	132.77	123.60
1	B	355	VAL	CA-CB-CG1	6.52	120.68	110.90
1	B	75	ARG	NE-CZ-NH1	6.52	123.56	120.30
1	B	272	VAL	N-CA-CB	-6.46	97.28	111.50
1	A	175	GLU	OE1-CD-OE2	-6.46	115.55	123.30

Continued on next page...

Continued from previous page...

Mol	Chain	Res	Type	Atoms	Z	Observed(°)	Ideal(°)
1	A	117	ILE	CA-CB-CG2	6.39	123.68	110.90
1	A	185	LYS	CD-CE-NZ	6.36	126.32	111.70
1	B	288	VAL	CG1-CB-CG2	6.29	120.97	110.90
1	C	360	CYS	CA-CB-SG	6.28	125.30	114.00
1	B	274	GLU	OE1-CD-OE2	-6.26	115.78	123.30
1	D	277	ARG	NE-CZ-NH1	6.25	123.42	120.30
1	D	68	VAL	CA-CB-CG2	6.20	120.20	110.90
1	D	182	GLU	OE1-CD-OE2	-6.20	115.86	123.30
1	D	44	ASP	CB-CG-OD2	-6.19	112.72	118.30
1	A	74	TRP	CB-CG-CD2	6.17	134.62	126.60
1	C	394	THR	CA-CB-CG2	-6.17	103.76	112.40
1	C	99	ARG	NE-CZ-NH1	6.17	123.39	120.30
1	C	124	ARG	NE-CZ-NH2	-6.16	117.22	120.30
1	D	320	ASP	CB-CG-OD1	6.16	123.84	118.30
1	C	355	VAL	CA-CB-CG2	6.14	120.12	110.90
1	B	97	ARG	NE-CZ-NH2	6.13	123.36	120.30
1	D	288	VAL	CG1-CB-CG2	6.13	120.70	110.90
1	D	90	ALA	CB-CA-C	-6.06	101.01	110.10
1	C	361	ASP	OD1-CG-OD2	-6.05	111.81	123.30
1	B	137	ASP	CB-CG-OD1	-6.04	112.87	118.30
1	A	272	VAL	N-CA-CB	-6.03	98.23	111.50
1	B	85	THR	N-CA-CB	-6.00	98.90	110.30
1	C	389	TYR	CB-CG-CD1	-5.99	117.41	121.00
1	B	176	ASP	CB-CG-OD1	5.99	123.69	118.30
1	C	68	VAL	CA-CB-CG2	5.95	119.83	110.90
1	B	391	VAL	O-C-N	-5.95	113.19	122.70
1	B	72	ASP	CB-CG-OD2	5.92	123.63	118.30
1	C	96	GLN	CA-CB-CG	5.92	126.42	113.40
1	C	274	GLU	OE1-CD-OE2	-5.91	116.21	123.30
1	B	134	ASP	OD1-CG-OD2	-5.91	112.08	123.30
1	A	279	TYR	CB-CG-CD2	-5.89	117.47	121.00
1	B	61	ARG	NE-CZ-NH2	-5.88	117.36	120.30
1	A	359	THR	CA-CB-CG2	5.87	120.61	112.40
1	B	137	ASP	CB-CG-OD2	5.85	123.56	118.30
1	B	371	TYR	CB-CG-CD2	-5.83	117.50	121.00
1	B	129	ASP	CB-CG-OD2	-5.83	113.05	118.30
1	D	121	ARG	NE-CZ-NH2	-5.80	117.40	120.30
1	B	68	VAL	CA-CB-CG2	5.79	119.58	110.90
1	D	361	ASP	CB-CG-OD1	5.78	123.50	118.30
1	A	288	VAL	CA-CB-CG1	5.76	119.55	110.90
1	C	154	ARG	NE-CZ-NH2	-5.75	117.43	120.30
1	D	166	LEU	CA-CB-CG	5.74	128.51	115.30

Continued on next page...

Continued from previous page...

Mol	Chain	Res	Type	Atoms	Z	Observed(°)	Ideal(°)
1	D	279	TYR	CB-CG-CD2	-5.74	117.55	121.00
1	C	117	ILE	CA-CB-CG2	5.69	122.27	110.90
1	A	361	ASP	CB-CG-OD1	5.63	123.36	118.30
1	A	216	ARG	CG-CD-NE	5.58	123.51	111.80
1	D	391	VAL	CG1-CB-CG2	-5.56	102.00	110.90
1	A	44	ASP	CB-CG-OD2	-5.55	113.30	118.30
1	D	74	TRP	CB-CG-CD2	5.55	133.81	126.60
1	A	137	ASP	CB-CG-OD2	5.54	123.28	118.30
1	B	283	ALA	N-CA-CB	-5.53	102.36	110.10
1	D	371	TYR	CA-CB-CG	-5.51	102.93	113.40
1	A	380	TRP	CB-CG-CD2	5.51	133.76	126.60
1	D	332	ASP	CB-CG-OD1	5.50	123.25	118.30
1	A	90	ALA	CB-CA-C	-5.45	101.92	110.10
1	B	156	SER	N-CA-CB	5.44	118.66	110.50
1	C	75	ARG	NH1-CZ-NH2	-5.44	113.42	119.40
1	C	83	LEU	O-C-N	-5.42	113.99	123.20
1	A	76	VAL	CA-CB-CG2	5.39	118.98	110.90
1	B	278	TYR	CB-CG-CD1	-5.38	117.77	121.00
1	B	266	ASP	CB-CG-OD2	-5.37	113.47	118.30
1	C	332	ASP	OD1-CG-OD2	-5.37	113.09	123.30
1	C	61	ARG	NE-CZ-NH2	5.36	122.98	120.30
1	B	178	ARG	NE-CZ-NH1	5.36	122.98	120.30
1	C	219	PHE	CB-CG-CD1	-5.36	117.05	120.80
1	A	259	LEU	CB-CG-CD1	5.34	120.09	111.00
1	B	367	VAL	CA-CB-CG1	5.34	118.91	110.90
1	D	75	ARG	NE-CZ-NH2	-5.34	117.63	120.30
1	A	75	ARG	NE-CZ-NH2	-5.33	117.64	120.30
1	A	190	ASP	CB-CG-OD1	5.32	123.09	118.30
1	B	371	TYR	CA-CB-CG	-5.32	103.29	113.40
1	C	97	ARG	CD-NE-CZ	5.32	131.05	123.60
1	C	288	VAL	CG1-CB-CG2	5.32	119.41	110.90
1	A	325	SER	N-CA-CB	-5.31	102.54	110.50
1	D	207	THR	CA-CB-CG2	-5.30	104.98	112.40
1	A	280	VAL	CG1-CB-CG2	-5.29	102.44	110.90
1	B	332	ASP	CB-CG-OD1	5.27	123.04	118.30
1	C	176	ASP	CB-CG-OD2	5.26	123.03	118.30
1	B	313	SER	CB-CA-C	-5.25	100.12	110.10
1	C	391	VAL	O-C-N	-5.25	114.31	122.70
1	D	124	ARG	CD-NE-CZ	5.24	130.94	123.60
1	A	360	CYS	CA-CB-SG	5.23	123.41	114.00
1	A	371	TYR	CA-CB-CG	-5.23	103.46	113.40
1	A	47	ASP	OD1-CG-OD2	-5.22	113.38	123.30

Continued on next page...

Continued from previous page...

Mol	Chain	Res	Type	Atoms	Z	Observed(°)	Ideal(°)
1	B	38	ASP	CB-CG-OD2	-5.22	113.61	118.30
1	B	312	GLN	N-CA-CB	-5.21	101.22	110.60
1	C	121	ARG	NE-CZ-NH1	5.21	122.90	120.30
1	A	211	ALA	O-C-N	-5.19	114.39	122.70
1	C	86	GLY	O-C-N	-5.18	114.41	122.70
1	B	343	GLU	OE1-CD-OE2	-5.17	117.09	123.30
1	B	242	ARG	NE-CZ-NH2	5.17	122.88	120.30
1	A	65	PHE	CG-CD2-CE2	-5.15	115.13	120.80
1	A	121	ARG	NH1-CZ-NH2	5.14	125.05	119.40
1	C	76	VAL	CG1-CB-CG2	5.13	119.11	110.90
1	C	278	TYR	CB-CG-CD2	-5.13	117.92	121.00
1	A	85	THR	OG1-CB-CG2	5.11	121.75	110.00
1	A	96	GLN	CB-CA-C	-5.11	100.18	110.40
1	D	325	SER	N-CA-CB	-5.10	102.84	110.50
1	B	323	TYR	CB-CG-CD1	-5.10	117.94	121.00
1	B	117	ILE	CA-CB-CG2	5.10	121.10	110.90
1	A	337	ARG	CD-NE-CZ	5.08	130.72	123.60
1	D	331	TYR	CA-CB-CG	5.08	123.05	113.40
1	C	136	VAL	CG1-CB-CG2	-5.08	102.78	110.90
1	C	190	ASP	OD1-CG-OD2	-5.06	113.69	123.30
1	C	198	VAL	CA-C-N	5.06	126.31	116.20
1	D	83	LEU	CA-C-N	5.06	126.31	116.20
1	B	76	VAL	N-CA-CB	5.05	122.61	111.50
1	B	99	ARG	O-C-N	-5.05	114.62	123.20
1	B	277	ARG	CD-NE-CZ	-5.04	116.54	123.60
1	B	174	VAL	CA-CB-CG2	5.04	118.46	110.90
1	A	279	TYR	CB-CG-CD1	5.04	124.02	121.00
1	B	342	ARG	NE-CZ-NH2	5.03	122.81	120.30
1	D	133	PHE	CB-CG-CD1	-5.02	117.28	120.80
1	C	76	VAL	N-CA-CB	5.02	122.54	111.50
1	C	335	VAL	CG1-CB-CG2	-5.01	102.88	110.90
1	A	111	ALA	O-C-N	-5.01	114.68	122.70
1	D	194	VAL	CG1-CB-CG2	-5.00	102.89	110.90

There are no chirality outliers.

All (4) planarity outliers are listed below:

Mol	Chain	Res	Type	Group
1	A	167	SER	Peptide
1	A	239	PRO	Mainchain
1	B	167	SER	Peptide
1	D	168	VAL	Mainchain

5.2 Too-close contacts ⓘ

In the following table, the Non-H and H(model) columns list the number of non-hydrogen atoms and hydrogen atoms in the chain respectively. The H(added) column lists the number of hydrogen atoms added and optimized by MolProbity. The Clashes column lists the number of clashes within the asymmetric unit, whereas Symm-Clashes lists symmetry related clashes.

Mol	Chain	Non-H	H(model)	H(added)	Clashes	Symm-Clashes
1	A	2754	0	2708	68	0
1	B	2747	0	2702	72	1
1	C	2754	0	2709	83	0
1	D	2754	0	2709	74	0
2	A	15	0	7	1	0
2	B	15	0	7	1	0
2	C	15	0	7	1	0
2	D	15	0	7	1	0
3	A	7	0	9	0	0
3	B	7	0	9	0	0
3	C	7	0	9	0	0
3	D	7	0	9	0	0
4	A	233	0	0	11	0
4	B	212	0	0	11	0
4	C	206	0	0	15	1
4	D	218	0	0	13	2
All	All	11966	0	10892	286	2

The all-atom clashscore is defined as the number of clashes found per 1000 atoms (including hydrogen atoms). The all-atom clashscore for this structure is 13.

All (286) close contacts within the same asymmetric unit are listed below, sorted by their clash magnitude.

Atom-1	Atom-2	Interatomic distance (Å)	Clash overlap (Å)
1:D:166:LEU:HD13	1:D:167:SER:H	1.29	0.96
1:C:117:ILE:HD11	1:C:121:ARG:NH2	1.88	0.89
1:B:167:SER:HB2	1:B:169:LYS:H	1.38	0.85
1:C:166:LEU:HD13	1:C:167:SER:H	1.43	0.83
1:D:406:TYR:HB2	4:D:860:HOH:O	1.76	0.83
1:D:192:THR:HG22	4:D:834:HOH:O	1.79	0.82
1:B:117:ILE:HD11	1:B:121:ARG:NH2	1.94	0.82
1:C:200:SER:HA	1:C:237:GLY:HA2	1.62	0.81
1:A:166:LEU:HD13	1:A:167:SER:H	1.45	0.81
1:D:42:VAL:HG22	4:D:860:HOH:O	1.79	0.81
1:B:166:LEU:HD13	1:B:167:SER:H	1.46	0.79

Continued on next page...

Continued from previous page...

Atom-1	Atom-2	Interatomic distance (Å)	Clash overlap (Å)
1:A:192:THR:HG22	4:A:883:HOH:O	1.83	0.79
1:A:288:VAL:HG13	1:A:318:VAL:HB	1.64	0.79
1:A:167:SER:HB2	1:A:169:LYS:H	1.48	0.78
1:C:366:ILE:HG22	1:C:367:VAL:HG23	1.65	0.78
1:A:185:LYS:O	1:A:185:LYS:HE3	1.84	0.77
1:A:157:THR:H	1:A:166:LEU:HD12	1.50	0.77
1:C:341:GLN:HG3	1:C:380:TRP:HB2	1.64	0.76
1:A:154:ARG:HH21	1:A:166:LEU:HD23	1.50	0.75
1:B:185:LYS:HE3	1:B:185:LYS:O	1.86	0.75
1:C:185:LYS:HE3	1:C:185:LYS:O	1.87	0.74
1:B:341:GLN:HG3	1:B:380:TRP:HB2	1.70	0.73
1:D:154:ARG:HH21	1:D:166:LEU:HD23	1.54	0.73
1:C:167:SER:HB2	4:C:801:HOH:O	1.89	0.73
1:C:73:ASP:HB3	1:C:76:VAL:HG13	1.71	0.73
1:D:348:GLU:HG2	1:D:350:LEU:HD13	1.68	0.73
1:C:136:VAL:HG12	4:C:830:HOH:O	1.89	0.72
1:C:288:VAL:HG13	1:C:318:VAL:HB	1.70	0.72
1:C:157:THR:H	1:C:166:LEU:HD12	1.51	0.72
1:A:394:THR:HG21	4:A:780:HOH:O	1.89	0.71
1:C:117:ILE:HD11	1:C:121:ARG:HH22	1.55	0.70
1:A:157:THR:HG21	1:A:198:VAL:HA	1.73	0.70
1:D:346:PRO:O	1:D:347:ASN:HB2	1.92	0.69
1:A:73:ASP:HB3	1:A:76:VAL:HG13	1.75	0.69
1:B:288:VAL:HG13	1:B:318:VAL:HB	1.75	0.69
1:A:204:ASP:HA	4:A:848:HOH:O	1.92	0.68
1:D:157:THR:H	1:D:166:LEU:HD12	1.59	0.68
1:D:166:LEU:HD22	1:D:167:SER:OG	1.93	0.68
1:D:85:THR:HG23	1:D:86:GLY:O	1.94	0.67
1:B:337:ARG:HG3	1:B:337:ARG:HH21	1.58	0.67
1:D:288:VAL:HG13	1:D:318:VAL:HB	1.77	0.67
1:D:394:THR:HG21	4:D:784:HOH:O	1.94	0.66
1:C:369:ARG:NH2	1:C:371:TYR:OH	2.28	0.66
1:D:136:VAL:HG11	4:D:792:HOH:O	1.96	0.65
1:B:85:THR:HG23	1:B:86:GLY:O	1.96	0.65
1:A:365:GLN:NE2	1:A:368:GLU:HG2	2.11	0.65
1:C:117:ILE:HG13	1:C:118:SER:N	2.12	0.65
1:B:341:GLN:C	1:B:341:GLN:HE21	2.00	0.65
1:C:210:GLN:HG3	4:C:855:HOH:O	1.97	0.64
1:C:356:TRP:HH2	1:D:168:VAL:HG13	1.61	0.64
1:A:341:GLN:HG3	1:A:380:TRP:HB2	1.78	0.64
1:C:394:THR:HG21	4:C:764:HOH:O	1.97	0.64

Continued on next page...

Continued from previous page...

Atom-1	Atom-2	Interatomic distance (Å)	Clash overlap (Å)
1:C:345:ILE:HG13	1:C:346:PRO:HD2	1.80	0.64
1:B:96:GLN:HG2	1:B:122:TYR:OH	1.98	0.64
1:C:289:ASN:HD21	1:C:378:GLY:HA2	1.63	0.63
1:C:197:HIS:CD2	1:C:236:GLY:H	2.17	0.63
1:A:359:THR:HG23	1:A:361:ASP:H	1.63	0.63
1:A:210:GLN:HG3	4:A:824:HOH:O	1.97	0.63
1:D:337:ARG:HG3	4:D:917:HOH:O	1.99	0.63
1:A:185:LYS:HD3	4:A:784:HOH:O	1.98	0.62
1:D:157:THR:HG21	1:D:198:VAL:HA	1.81	0.62
1:C:372:LEU:HB3	1:C:373:PRO:HD2	1.81	0.62
1:A:230:HIS:HB2	1:A:268:LYS:O	2.00	0.62
1:B:198:VAL:HG22	1:B:207:THR:HG22	1.80	0.62
1:C:346:PRO:O	1:C:347:ASN:HB2	1.99	0.62
1:B:369:ARG:NH2	1:B:371:TYR:OH	2.32	0.62
1:D:268:LYS:HE3	1:D:268:LYS:HA	1.80	0.62
1:B:346:PRO:O	1:B:347:ASN:HB2	1.98	0.62
1:A:200:SER:HA	1:A:237:GLY:HA2	1.82	0.62
1:B:167:SER:HB2	1:B:169:LYS:N	2.12	0.62
1:D:341:GLN:HG3	1:D:380:TRP:HB2	1.82	0.62
1:A:348:GLU:HG2	1:A:350:LEU:HD13	1.82	0.61
1:C:319:ASN:HD22	1:D:116:GLN:NE2	1.98	0.61
1:B:200:SER:HB3	1:B:277:ARG:HE	1.66	0.61
1:B:394:THR:HG21	4:B:804:HOH:O	2.00	0.60
1:A:337:ARG:HG3	4:A:928:HOH:O	2.00	0.60
1:D:117:ILE:HD11	1:D:121:ARG:HH22	1.67	0.60
1:A:200:SER:HB3	1:A:277:ARG:HE	1.66	0.60
1:B:73:ASP:HB3	1:B:76:VAL:HG13	1.84	0.59
1:B:99:ARG:NE	4:B:879:HOH:O	2.34	0.59
1:B:147:PRO:HB3	4:B:884:HOH:O	2.02	0.59
1:D:197:HIS:CD2	1:D:236:GLY:H	2.20	0.59
1:A:346:PRO:O	1:A:347:ASN:HB2	2.02	0.59
1:C:365:GLN:NE2	1:C:368:GLU:HG2	2.17	0.59
1:C:341:GLN:C	1:C:341:GLN:HE21	2.06	0.59
1:A:345:ILE:HG13	1:A:346:PRO:HD2	1.84	0.59
1:D:295:VAL:HG13	1:D:314:PHE:CE2	2.38	0.59
1:D:167:SER:HB2	1:D:169:LYS:H	1.69	0.58
1:D:73:ASP:HB3	1:D:76:VAL:HG13	1.86	0.58
1:C:96:GLN:HG2	1:C:122:TYR:OH	2.02	0.58
1:A:341:GLN:HE21	1:A:341:GLN:C	2.06	0.58
1:A:154:ARG:HH21	1:A:166:LEU:CD2	2.16	0.58
1:A:167:SER:HB2	1:A:169:LYS:N	2.18	0.57

Continued on next page...

Continued from previous page...

Atom-1	Atom-2	Interatomic distance (Å)	Clash overlap (Å)
1:A:85:THR:HG23	1:A:86:GLY:O	2.02	0.57
1:B:247:LYS:HD2	4:B:754:HOH:O	2.03	0.57
1:D:200:SER:HB3	1:D:277:ARG:HE	1.68	0.57
1:B:200:SER:HA	1:B:237:GLY:HA2	1.86	0.57
1:C:144:LYS:HD3	1:C:144:LYS:N	2.20	0.57
1:D:365:GLN:NE2	1:D:368:GLU:HG2	2.20	0.57
1:B:261:LYS:CE	1:B:262:HIS:CE1	2.88	0.57
1:B:197:HIS:CD2	1:B:236:GLY:H	2.22	0.57
1:D:96:GLN:HG2	1:D:122:TYR:OH	2.04	0.56
1:C:337:ARG:HH21	1:C:337:ARG:HG3	1.70	0.56
1:D:107:LYS:NZ	4:D:902:HOH:O	2.38	0.56
1:B:156:SER:OG	1:B:173:LYS:HD2	2.05	0.56
1:D:366:ILE:HG22	1:D:367:VAL:HG23	1.88	0.56
1:C:107:LYS:NZ	4:C:883:HOH:O	2.24	0.56
1:D:372:LEU:HB3	1:D:373:PRO:HD2	1.87	0.56
1:A:359:THR:CG2	1:A:361:ASP:H	2.19	0.55
1:C:90:ALA:HB3	1:D:398:ASN:ND2	2.21	0.55
1:A:342:ARG:HG3	4:A:733:HOH:O	2.05	0.55
1:D:144:LYS:HD3	1:D:144:LYS:N	2.22	0.55
1:A:166:LEU:HD22	1:A:167:SER:OG	2.07	0.55
1:A:117:ILE:HD11	1:A:121:ARG:HH22	1.71	0.55
1:B:261:LYS:HE3	1:B:262:HIS:CE1	2.42	0.54
1:B:359:THR:HB	1:B:364:ASP:OD2	2.06	0.54
1:B:289:ASN:ND2	4:B:780:HOH:O	2.41	0.54
1:A:241:THR:O	1:A:243:ASP:N	2.40	0.54
1:C:80:LEU:HB3	1:C:85:THR:HG21	1.90	0.54
1:B:157:THR:H	1:B:166:LEU:HD12	1.71	0.54
1:A:197:HIS:CD2	1:A:236:GLY:H	2.25	0.54
1:B:295:VAL:HG13	1:B:314:PHE:CE2	2.42	0.54
1:D:216:ARG:HD2	1:D:262:HIS:O	2.07	0.54
1:D:197:HIS:HD2	1:D:236:GLY:H	1.55	0.54
1:C:359:THR:HG23	1:C:361:ASP:H	1.72	0.54
1:A:80:LEU:HB3	1:A:85:THR:HG21	1.90	0.54
1:D:242:ARG:HG3	4:D:858:HOH:O	2.07	0.54
1:A:90:ALA:HB3	1:B:398:ASN:ND2	2.23	0.53
1:D:71:ASN:HD22	1:D:71:ASN:C	2.11	0.53
1:C:88:ASP:OD1	1:C:111:ALA:HB3	2.08	0.53
1:B:274:GLU:O	2:B:600:PLP:H6	2.08	0.53
1:B:204:ASP:HA	4:B:809:HOH:O	2.09	0.53
1:B:345:ILE:HG13	1:B:346:PRO:HD2	1.89	0.53
1:A:144:LYS:HD3	1:A:144:LYS:N	2.23	0.53

Continued on next page...

Continued from previous page...

Atom-1	Atom-2	Interatomic distance (Å)	Clash overlap (Å)
1:B:365:GLN:NE2	1:B:368:GLU:HG2	2.24	0.53
1:B:342:ARG:HD3	1:B:379:GLU:OE2	2.09	0.53
1:A:372:LEU:HB3	1:A:373:PRO:HD2	1.89	0.52
1:B:197:HIS:HD2	1:B:236:GLY:H	1.56	0.52
1:C:71:ASN:HD22	1:C:71:ASN:C	2.13	0.52
1:D:117:ILE:HD11	1:D:121:ARG:NH2	2.24	0.52
1:B:261:LYS:HE2	1:B:262:HIS:CE1	2.44	0.52
1:C:99:ARG:NE	4:C:829:HOH:O	2.42	0.52
1:B:88:ASP:OD1	1:B:111:ALA:HB3	2.09	0.52
1:A:166:LEU:O	1:A:167:SER:HB3	2.10	0.52
1:D:369:ARG:NH2	1:D:371:TYR:OH	2.43	0.52
1:B:136:VAL:HG12	4:B:803:HOH:O	2.08	0.52
1:A:359:THR:HB	1:A:364:ASP:OD2	2.10	0.51
1:B:289:ASN:HD21	1:B:378:GLY:HA2	1.74	0.51
1:D:256:ASN:ND2	4:D:722:HOH:O	2.44	0.51
1:C:112:ASN:ND2	4:C:884:HOH:O	2.43	0.51
1:B:200:SER:HB3	1:B:277:ARG:NE	2.25	0.51
1:D:157:THR:H	1:D:166:LEU:CD1	2.24	0.51
1:C:197:HIS:HD2	1:C:236:GLY:H	1.57	0.51
1:B:342:ARG:HG3	4:B:781:HOH:O	2.09	0.51
1:C:85:THR:HG23	1:C:86:GLY:O	2.09	0.51
1:B:198:VAL:HG13	1:B:207:THR:HG21	1.93	0.51
1:D:274:GLU:O	2:D:600:PLP:H6	2.11	0.51
1:C:356:TRP:CH2	1:D:168:VAL:HG13	2.45	0.50
1:B:154:ARG:HH21	1:B:166:LEU:CD2	2.25	0.49
1:A:295:VAL:HG13	1:A:314:PHE:CE2	2.47	0.49
1:C:337:ARG:NE	4:C:902:HOH:O	2.39	0.49
1:B:157:THR:HG21	1:B:198:VAL:HA	1.94	0.49
1:C:289:ASN:ND2	4:C:832:HOH:O	2.45	0.49
1:D:71:ASN:HD22	1:D:73:ASP:H	1.59	0.49
1:C:157:THR:N	1:C:166:LEU:HD12	2.22	0.49
1:C:221:MET:HE1	4:C:740:HOH:O	2.11	0.49
1:A:274:GLU:O	2:A:600:PLP:H6	2.13	0.49
1:B:121:ARG:HD2	4:B:882:HOH:O	2.13	0.49
1:C:121:ARG:NH1	4:C:885:HOH:O	2.35	0.48
1:C:342:ARG:NH1	1:C:379:GLU:OE1	2.46	0.48
1:B:337:ARG:HH21	1:B:337:ARG:CG	2.24	0.48
1:D:71:ASN:ND2	1:D:73:ASP:H	2.12	0.48
1:A:136:VAL:HG11	4:A:813:HOH:O	2.14	0.48
1:C:167:SER:HB2	1:C:169:LYS:H	1.79	0.48
1:C:247:LYS:HE2	1:C:250:GLU:OE2	2.14	0.48

Continued on next page...

Continued from previous page...

Atom-1	Atom-2	Interatomic distance (Å)	Clash overlap (Å)
1:B:359:THR:HG23	1:B:361:ASP:H	1.79	0.48
1:D:80:LEU:HB3	1:D:85:THR:HG21	1.96	0.48
1:A:117:ILE:HD11	1:A:121:ARG:NH2	2.28	0.48
1:C:113:PRO:HG2	1:C:170:PHE:CD2	2.49	0.47
1:D:154:ARG:HH21	1:D:166:LEU:CD2	2.24	0.47
1:D:200:SER:HA	1:D:237:GLY:HA2	1.96	0.47
1:D:343:GLU:OE2	1:D:344:PRO:HD2	2.14	0.47
1:A:296:THR:HG23	4:A:882:HOH:O	2.13	0.47
1:C:342:ARG:HG3	4:C:795:HOH:O	2.15	0.47
1:C:156:SER:OG	1:C:173:LYS:HD2	2.15	0.47
1:C:316:TYR:CE2	1:C:375:MET:HB2	2.49	0.47
1:A:366:ILE:HG22	1:A:367:VAL:HG23	1.95	0.47
1:B:166:LEU:HD22	1:B:167:SER:OG	2.15	0.47
1:A:345:ILE:CG1	1:A:346:PRO:HD2	2.44	0.47
1:C:106:GLU:CD	1:C:106:GLU:H	2.18	0.47
1:D:47:ASP:OD2	1:D:282:SER:HB2	2.15	0.47
1:A:71:ASN:HD22	1:A:73:ASP:H	1.61	0.47
1:B:391:VAL:O	1:B:394:THR:HG23	2.15	0.47
1:A:90:ALA:CB	1:B:398:ASN:ND2	2.78	0.47
1:C:294:LYS:HB2	1:C:315:MET:HB2	1.97	0.47
1:D:230:HIS:HB2	1:D:268:LYS:O	2.15	0.46
1:B:144:LYS:N	1:B:144:LYS:HD3	2.30	0.46
1:C:341:GLN:HE21	1:C:342:ARG:N	2.13	0.46
1:B:80:LEU:HB3	1:B:85:THR:HG21	1.97	0.46
1:D:268:LYS:HE3	1:D:268:LYS:CA	2.43	0.46
1:A:289:ASN:HD21	1:A:378:GLY:HA2	1.80	0.46
1:C:274:GLU:O	2:C:600:PLP:H6	2.16	0.46
1:B:337:ARG:NH2	1:B:337:ARG:CG	2.77	0.46
1:C:319:ASN:HD22	1:D:116:GLN:HE22	1.63	0.46
1:D:133:PHE:CE1	1:D:139:LEU:HD11	2.51	0.46
1:C:398:ASN:ND2	1:D:90:ALA:HB3	2.31	0.46
1:D:359:THR:HB	1:D:364:ASP:OD2	2.15	0.46
1:A:293:LYS:HE2	1:A:375:MET:O	2.16	0.46
1:C:224:GLU:HG2	1:C:224:GLU:O	2.16	0.46
1:D:359:THR:HG23	1:D:361:ASP:H	1.81	0.46
1:A:166:LEU:HD13	1:A:167:SER:N	2.23	0.45
1:A:398:ASN:ND2	1:B:90:ALA:HB3	2.32	0.45
1:D:166:LEU:HD13	1:D:167:SER:N	2.12	0.45
1:A:112:ASN:ND2	4:A:913:HOH:O	2.48	0.45
1:A:157:THR:N	1:A:166:LEU:HD12	2.25	0.45
1:B:337:ARG:HG3	1:B:337:ARG:NH2	2.29	0.45

Continued on next page...

Continued from previous page...

Atom-1	Atom-2	Interatomic distance (Å)	Clash overlap (Å)
1:D:293:LYS:HE2	1:D:375:MET:O	2.16	0.45
1:C:256:ASN:ND2	4:C:733:HOH:O	2.42	0.45
1:A:175:GLU:H	1:A:175:GLU:CD	2.19	0.45
1:A:156:SER:HA	1:A:166:LEU:HD11	1.99	0.45
1:D:345:ILE:HA	1:D:346:PRO:HD3	1.84	0.45
1:D:185:LYS:HA	1:D:185:LYS:HD2	1.88	0.45
1:D:92:ASN:OD1	1:D:92:ASN:N	2.50	0.45
1:C:166:LEU:HB2	1:C:197:HIS:O	2.17	0.45
1:A:98:VAL:CG2	1:A:108:ILE:HD11	2.47	0.45
1:B:112:ASN:C	1:B:112:ASN:HD22	2.19	0.45
1:A:128:VAL:O	1:A:146:HIS:HE1	2.00	0.45
1:C:349:LYS:HD3	1:C:350:LEU:H	1.82	0.44
1:C:269:LEU:HD21	1:C:271:ILE:HD11	1.99	0.44
1:C:173:LYS:HD2	1:C:173:LYS:HA	1.82	0.44
1:C:154:ARG:HH21	1:C:166:LEU:CD2	2.31	0.44
1:A:311:ALA:O	1:A:312:GLN:C	2.56	0.44
1:C:50:ARG:HG3	4:C:874:HOH:O	2.17	0.44
1:D:112:ASN:ND2	4:D:831:HOH:O	2.50	0.44
1:A:166:LEU:O	1:A:167:SER:CB	2.64	0.44
1:C:185:LYS:HE3	1:C:185:LYS:C	2.37	0.44
1:C:38:ASP:HB3	1:C:39:PRO:HD2	1.98	0.44
1:A:96:GLN:HG2	1:A:122:TYR:OH	2.18	0.44
1:D:260:GLU:HG3	4:D:810:HOH:O	2.18	0.44
1:A:319:ASN:HD22	1:B:116:GLN:NE2	2.15	0.44
1:C:371:TYR:HB2	4:C:774:HOH:O	2.18	0.43
1:C:359:THR:HB	1:C:364:ASP:OD2	2.18	0.43
1:C:230:HIS:HB2	1:C:268:LYS:O	2.19	0.43
1:C:295:VAL:HG13	1:C:314:PHE:CE2	2.54	0.43
1:C:116:GLN:NE2	1:D:319:ASN:HD22	2.16	0.43
1:C:343:GLU:HA	1:C:344:PRO:HD3	1.90	0.43
1:D:146:HIS:HD2	4:D:733:HOH:O	2.01	0.43
1:A:341:GLN:HE21	1:A:342:ARG:N	2.17	0.43
1:B:195:SER:HA	1:B:233:ASP:O	2.19	0.43
1:B:349:LYS:HD3	1:B:350:LEU:H	1.84	0.43
1:A:402:SER:HA	1:A:403:PRO:HD3	1.87	0.42
1:B:341:GLN:HE21	1:B:342:ARG:N	2.18	0.42
1:A:112:ASN:HD22	1:A:112:ASN:C	2.23	0.42
1:B:247:LYS:HE2	1:B:250:GLU:OE2	2.18	0.42
1:C:200:SER:HB3	1:C:277:ARG:HE	1.85	0.42
1:D:217:PHE:CD2	1:D:221:MET:HE3	2.55	0.42
1:B:92:ASN:ND2	4:B:805:HOH:O	2.51	0.42

Continued on next page...

Continued from previous page...

Atom-1	Atom-2	Interatomic distance (Å)	Clash overlap (Å)
1:A:264:PRO:HD2	4:A:840:HOH:O	2.20	0.42
1:C:166:LEU:HD22	1:C:167:SER:OG	2.18	0.42
1:C:402:SER:HA	1:C:403:PRO:HD3	1.89	0.42
1:C:185:LYS:HA	1:C:185:LYS:HD2	1.83	0.42
1:D:262:HIS:HD2	4:D:757:HOH:O	2.03	0.42
1:B:154:ARG:HH21	1:B:166:LEU:HD21	1.86	0.41
1:A:268:LYS:HA	1:A:268:LYS:HE3	2.02	0.41
1:D:128:VAL:O	1:D:146:HIS:HE1	2.03	0.41
1:B:140:GLU:O	1:B:144:LYS:HD3	2.20	0.41
1:B:256:ASN:ND2	4:B:731:HOH:O	2.49	0.41
1:D:402:SER:HA	1:D:403:PRO:HD3	1.88	0.41
1:D:121:ARG:HG3	1:D:124:ARG:NH2	2.35	0.41
1:B:372:LEU:HB3	1:B:373:PRO:HD2	2.03	0.41
1:B:215:SER:O	1:B:219:PHE:HB2	2.20	0.41
1:C:117:ILE:CD1	1:C:121:ARG:NH2	2.73	0.41
1:B:166:LEU:O	1:B:167:SER:HB3	2.21	0.41
1:C:195:SER:HB3	1:C:233:ASP:HB3	2.02	0.41
1:D:44:ASP:OD1	1:D:410:SER:HB2	2.21	0.41
1:C:144:LYS:H	1:C:144:LYS:HD3	1.82	0.41
1:D:348:GLU:HG2	1:D:350:LEU:CD1	2.46	0.41
1:C:337:ARG:HH21	1:C:337:ARG:CG	2.33	0.41
1:C:173:LYS:NZ	1:C:174:VAL:H	2.18	0.40
1:B:106:GLU:CD	1:B:106:GLU:H	2.25	0.40
1:B:230:HIS:HB2	1:B:268:LYS:O	2.20	0.40
1:C:133:PHE:CE1	1:C:139:LEU:HD11	2.56	0.40
1:D:256:ASN:HD22	1:D:256:ASN:HA	1.70	0.40
1:A:247:LYS:HB2	1:A:247:LYS:HE2	1.91	0.40
1:D:347:ASN:O	1:D:348:GLU:C	2.60	0.40
1:B:173:LYS:NZ	1:B:174:VAL:H	2.19	0.40

All (2) symmetry-related close contacts are listed below. The label for Atom-2 includes the symmetry operator and encoded unit-cell translations to be applied.

Atom-1	Atom-2	Interatomic distance (Å)	Clash overlap (Å)
4:C:862:HOH:O	4:D:849:HOH:O[2_556]	2.00	0.20
1:B:261:LYS:CD	4:D:912:HOH:O[2_545]	2.16	0.04

5.3 Torsion angles

5.3.1 Protein backbone

In the following table, the Percentiles column shows the percent Ramachandran outliers of the chain as a percentile score with respect to all X-ray entries followed by that with respect to entries of similar resolution.

The Analysed column shows the number of residues for which the backbone conformation was analysed, and the total number of residues.

Mol	Chain	Analysed	Favoured	Allowed	Outliers	Percentiles	
1	A	347/425 (82%)	328 (94%)	17 (5%)	2 (1%)	30	22
1	B	346/425 (81%)	329 (95%)	16 (5%)	1 (0%)	46	41
1	C	347/425 (82%)	330 (95%)	16 (5%)	1 (0%)	46	41
1	D	347/425 (82%)	334 (96%)	12 (4%)	1 (0%)	46	41
All	All	1387/1700 (82%)	1321 (95%)	61 (4%)	5 (0%)	39	33

All (5) Ramachandran outliers are listed below:

Mol	Chain	Res	Type
1	A	242	ARG
1	D	242	ARG
1	C	242	ARG
1	A	201	GLY
1	B	201	GLY

5.3.2 Protein sidechains

In the following table, the Percentiles column shows the percent sidechain outliers of the chain as a percentile score with respect to all X-ray entries followed by that with respect to entries of similar resolution.

The Analysed column shows the number of residues for which the sidechain conformation was analysed, and the total number of residues.

Mol	Chain	Analysed	Rotameric	Outliers	Percentiles	
1	A	299/361 (83%)	260 (87%)	39 (13%)	5	2
1	B	298/361 (82%)	262 (88%)	36 (12%)	6	3
1	C	299/361 (83%)	266 (89%)	33 (11%)	8	4
1	D	299/361 (83%)	261 (87%)	38 (13%)	5	3
All	All	1195/1444 (83%)	1049 (88%)	146 (12%)	6	3

All (146) residues with a non-rotameric sidechain are listed below:

Mol	Chain	Res	Type
1	A	71	ASN
1	A	74	TRP
1	A	75	ARG
1	A	76	VAL
1	A	85	THR
1	A	112	ASN
1	A	117	ILE
1	A	137	ASP
1	A	144	LYS
1	A	150	LYS
1	A	166	LEU
1	A	173	LYS
1	A	185	LYS
1	A	200	SER
1	A	206	SER
1	A	219	PHE
1	A	259	LEU
1	A	260	GLU
1	A	268	LYS
1	A	272	VAL
1	A	288	VAL
1	A	290	VAL
1	A	293	LYS
1	A	296	THR
1	A	297	PRO
1	A	312	GLN
1	A	330	LEU
1	A	339	LEU
1	A	341	GLN
1	A	343	GLU
1	A	345	ILE
1	A	348	GLU
1	A	350	LEU
1	A	359	THR
1	A	363	LEU
1	A	368	GLU
1	A	398	ASN
1	A	401	GLN
1	A	410	SER
1	B	68	VAL
1	B	71	ASN
1	B	74	TRP

Continued on next page...

Continued from previous page...

Mol	Chain	Res	Type
1	B	75	ARG
1	B	85	THR
1	B	110	TYR
1	B	112	ASN
1	B	117	ILE
1	B	137	ASP
1	B	150	LYS
1	B	166	LEU
1	B	168	VAL
1	B	173	LYS
1	B	174	VAL
1	B	185	LYS
1	B	204	ASP
1	B	213	SER
1	B	247	LYS
1	B	259	LEU
1	B	260	GLU
1	B	268	LYS
1	B	272	VAL
1	B	288	VAL
1	B	296	THR
1	B	312	GLN
1	B	330	LEU
1	B	341	GLN
1	B	343	GLU
1	B	348	GLU
1	B	359	THR
1	B	363	LEU
1	B	367	VAL
1	B	368	GLU
1	B	398	ASN
1	B	401	GLN
1	B	410	SER
1	C	71	ASN
1	C	74	TRP
1	C	75	ARG
1	C	85	THR
1	C	112	ASN
1	C	117	ILE
1	C	144	LYS
1	C	150	LYS
1	C	157	THR

Continued on next page...

Continued from previous page...

Mol	Chain	Res	Type
1	C	166	LEU
1	C	173	LYS
1	C	174	VAL
1	C	185	LYS
1	C	206	SER
1	C	259	LEU
1	C	260	GLU
1	C	266	ASP
1	C	268	LYS
1	C	272	VAL
1	C	288	VAL
1	C	293	LYS
1	C	296	THR
1	C	312	GLN
1	C	341	GLN
1	C	348	GLU
1	C	353	SER
1	C	359	THR
1	C	363	LEU
1	C	368	GLU
1	C	373	PRO
1	C	398	ASN
1	C	401	GLN
1	C	410	SER
1	D	71	ASN
1	D	74	TRP
1	D	75	ARG
1	D	85	THR
1	D	110	TYR
1	D	112	ASN
1	D	117	ILE
1	D	119	HIS
1	D	137	ASP
1	D	144	LYS
1	D	150	LYS
1	D	166	LEU
1	D	173	LYS
1	D	174	VAL
1	D	185	LYS
1	D	200	SER
1	D	216	ARG
1	D	219	PHE

Continued on next page...

Continued from previous page...

Mol	Chain	Res	Type
1	D	243	ASP
1	D	250	GLU
1	D	259	LEU
1	D	260	GLU
1	D	268	LYS
1	D	272	VAL
1	D	288	VAL
1	D	296	THR
1	D	312	GLN
1	D	330	LEU
1	D	341	GLN
1	D	348	GLU
1	D	350	LEU
1	D	359	THR
1	D	363	LEU
1	D	368	GLU
1	D	369	ARG
1	D	398	ASN
1	D	401	GLN
1	D	410	SER

Some sidechains can be flipped to improve hydrogen bonding and reduce clashes. All (48) such sidechains are listed below:

Mol	Chain	Res	Type
1	A	71	ASN
1	A	112	ASN
1	A	116	GLN
1	A	119	HIS
1	A	146	HIS
1	A	197	HIS
1	A	210	GLN
1	A	230	HIS
1	A	256	ASN
1	A	262	HIS
1	A	289	ASN
1	A	341	GLN
1	A	398	ASN
1	B	71	ASN
1	B	112	ASN
1	B	116	GLN
1	B	119	HIS
1	B	197	HIS

Continued on next page...

Continued from previous page...

Mol	Chain	Res	Type
1	B	210	GLN
1	B	256	ASN
1	B	262	HIS
1	B	289	ASN
1	B	341	GLN
1	B	365	GLN
1	B	398	ASN
1	B	401	GLN
1	C	71	ASN
1	C	112	ASN
1	C	116	GLN
1	C	119	HIS
1	C	146	HIS
1	C	197	HIS
1	C	210	GLN
1	C	230	HIS
1	C	256	ASN
1	C	289	ASN
1	C	341	GLN
1	C	365	GLN
1	D	71	ASN
1	D	112	ASN
1	D	116	GLN
1	D	146	HIS
1	D	197	HIS
1	D	210	GLN
1	D	256	ASN
1	D	289	ASN
1	D	341	GLN
1	D	365	GLN

5.3.3 RNA ⓘ

There are no RNA molecules in this entry.

5.4 Non-standard residues in protein, DNA, RNA chains ⓘ

There are no non-standard protein/DNA/RNA residues in this entry.

5.5 Carbohydrates [i](#)

There are no carbohydrates in this entry.

5.6 Ligand geometry [i](#)

8 ligands are modelled in this entry.

In the following table, the Counts columns list the number of bonds (or angles) for which Mogul statistics could be retrieved, the number of bonds (or angles) that are observed in the model and the number of bonds (or angles) that are defined in the chemical component dictionary. The Link column lists molecule types, if any, to which the group is linked. The Z score for a bond length (or angle) is the number of standard deviations the observed value is removed from the expected value. A bond length (or angle) with $|Z| > 2$ is considered an outlier worth inspection. RMSZ is the root-mean-square of all Z scores of the bond lengths (or angles).

Mol	Type	Chain	Res	Link	Bond lengths			Bond angles		
					Counts	RMSZ	# $ Z > 2$	Counts	RMSZ	# $ Z > 2$
2	PLP	A	600	3	15,15,16	3.09	5 (33%)	21,22,23	2.38	9 (42%)
3	DMO	A	700	1,2	6,6,11	0.50	0	6,6,15	2.89	4 (66%)
2	PLP	B	600	3	15,15,16	3.56	5 (33%)	21,22,23	2.10	9 (42%)
3	DMO	B	700	1,2	6,6,11	0.46	0	6,6,15	3.11	4 (66%)
2	PLP	C	600	3	15,15,16	3.07	5 (33%)	21,22,23	2.17	9 (42%)
3	DMO	C	700	1,2	6,6,11	0.52	0	6,6,15	3.20	4 (66%)
2	PLP	D	600	3	15,15,16	2.87	4 (26%)	21,22,23	2.58	10 (47%)
3	DMO	D	700	1,2	6,6,11	0.82	0	6,6,15	3.52	3 (50%)

In the following table, the Chirals column lists the number of chiral outliers, the number of chiral centers analysed, the number of these observed in the model and the number defined in the chemical component dictionary. Similar counts are reported in the Torsion and Rings columns. '-' means no outliers of that kind were identified.

Mol	Type	Chain	Res	Link	Chirals	Torsions	Rings
2	PLP	A	600	3	-	0/6/6/8	0/1/1/1
3	DMO	A	700	1,2	-	0/4/4/17	0/0/0/0
2	PLP	B	600	3	-	0/6/6/8	0/1/1/1
3	DMO	B	700	1,2	-	0/4/4/17	0/0/0/0
2	PLP	C	600	3	-	0/6/6/8	0/1/1/1
3	DMO	C	700	1,2	-	0/4/4/17	0/0/0/0
2	PLP	D	600	3	-	0/6/6/8	0/1/1/1
3	DMO	D	700	1,2	-	0/4/4/17	0/0/0/0

All (19) bond length outliers are listed below:

Mol	Chain	Res	Type	Atoms	Z	Observed(Å)	Ideal(Å)
2	A	600	PLP	O3-C3	2.04	1.41	1.37
2	C	600	PLP	O3-C3	2.45	1.42	1.37
2	D	600	PLP	C3-C2	2.50	1.42	1.40
2	A	600	PLP	C3-C2	2.65	1.42	1.40
2	B	600	PLP	P-O4P	2.66	1.69	1.60
2	B	600	PLP	O3-C3	2.78	1.43	1.37
2	A	600	PLP	P-O4P	2.88	1.69	1.60
2	C	600	PLP	P-O4P	3.06	1.70	1.60
2	C	600	PLP	C3-C2	3.79	1.43	1.40
2	D	600	PLP	P-O4P	3.96	1.73	1.60
2	C	600	PLP	C4A-C4	5.01	1.61	1.51
2	A	600	PLP	C4A-C4	5.25	1.62	1.51
2	D	600	PLP	C4A-C4	5.58	1.63	1.51
2	B	600	PLP	C4A-C4	5.63	1.63	1.51
2	B	600	PLP	C3-C2	5.79	1.44	1.40
2	D	600	PLP	C5-C4	7.54	1.49	1.40
2	C	600	PLP	C5-C4	8.54	1.50	1.40
2	A	600	PLP	C5-C4	8.94	1.50	1.40
2	B	600	PLP	C5-C4	9.89	1.52	1.40

All (52) bond angle outliers are listed below:

Mol	Chain	Res	Type	Atoms	Z	Observed(°)	Ideal(°)
2	D	600	PLP	C2A-C2-C3	-6.03	113.76	121.04
2	A	600	PLP	C2A-C2-C3	-5.68	114.19	121.04
2	C	600	PLP	C2A-C2-C3	-5.52	114.38	121.04
2	A	600	PLP	O4P-P-O1P	-3.79	97.49	107.14
2	D	600	PLP	O4P-P-O1P	-3.53	98.17	107.14
2	B	600	PLP	C3-C4-C5	-2.91	115.61	118.78
2	B	600	PLP	O3-C3-C2	-2.83	112.73	117.66
2	B	600	PLP	C5-C6-N1	-2.78	119.04	123.86
2	C	600	PLP	O2P-P-O4P	-2.72	98.72	106.56
2	B	600	PLP	O4P-C5A-C5	-2.66	104.60	108.99
2	D	600	PLP	C3-C4-C5	-2.64	115.89	118.78
2	B	600	PLP	C2A-C2-C3	-2.58	117.93	121.04
2	A	600	PLP	O4P-C5A-C5	-2.43	104.98	108.99
2	A	600	PLP	C3-C4-C5	-2.23	116.35	118.78
2	A	600	PLP	C5-C6-N1	-2.20	120.05	123.86
2	D	600	PLP	C5-C6-N1	-2.10	120.21	123.86
2	C	600	PLP	C5-C6-N1	-2.09	120.23	123.86
3	C	700	DMO	CO-CAO-NO	2.01	117.11	108.30
2	B	600	PLP	C2A-C2-N1	2.06	122.52	117.95
2	A	600	PLP	O3-C3-C4	2.13	124.10	118.12

Continued on next page...

Continued from previous page...

Mol	Chain	Res	Type	Atoms	Z	Observed(°)	Ideal(°)
3	B	700	DMO	CO-CAO-NO	2.17	117.79	108.30
2	C	600	PLP	O3P-P-O4P	2.38	113.41	106.56
2	C	600	PLP	O3-C3-C4	2.40	124.87	118.12
2	C	600	PLP	O3P-P-O2P	2.45	116.72	107.38
2	C	600	PLP	C6-N1-C2	2.46	124.29	119.28
3	A	700	DMO	CO-CAO-NO	2.46	119.05	108.30
2	D	600	PLP	O3P-P-O2P	2.46	116.75	107.38
2	D	600	PLP	O3-C3-C4	2.59	125.39	118.12
2	B	600	PLP	C6-N1-C2	2.63	124.64	119.28
2	C	600	PLP	C4A-C4-C5	2.67	123.67	120.88
3	B	700	DMO	CBO-CAO-NO	2.68	115.74	108.65
3	C	700	DMO	CBO-CAO-NO	2.76	115.96	108.65
2	A	600	PLP	C2A-C2-N1	3.04	124.68	117.95
2	D	600	PLP	O2P-P-O1P	3.06	120.42	110.58
3	B	700	DMO	CGO-CBO-CAO	3.21	122.59	113.56
3	C	700	DMO	CGO-CBO-CAO	3.33	122.92	113.56
3	A	700	DMO	CGO-CBO-CAO	3.33	122.93	113.56
3	A	700	DMO	CBO-CAO-NO	3.36	117.55	108.65
3	D	700	DMO	CBO-CAO-NO	3.42	117.71	108.65
2	B	600	PLP	O3-C3-C4	3.56	128.14	118.12
2	D	600	PLP	C4A-C4-C5	3.71	124.75	120.88
2	A	600	PLP	C6-C5-C4	3.72	121.30	118.15
2	D	600	PLP	C2A-C2-N1	3.75	126.27	117.95
2	D	600	PLP	C6-C5-C4	3.90	121.45	118.15
2	C	600	PLP	C2A-C2-N1	4.01	126.84	117.95
2	A	600	PLP	C4A-C4-C5	4.08	125.14	120.88
2	B	600	PLP	C6-C5-C4	4.55	122.01	118.15
3	A	700	DMO	CO-CAO-CBO	4.62	123.24	112.33
3	D	700	DMO	CGO-CBO-CAO	5.14	128.02	113.56
3	D	700	DMO	CO-CAO-CBO	5.66	125.69	112.33
3	B	700	DMO	CO-CAO-CBO	5.99	126.46	112.33
3	C	700	DMO	CO-CAO-CBO	6.15	126.84	112.33

There are no chirality outliers.

There are no torsion outliers.

There are no ring outliers.

4 monomers are involved in 4 short contacts:

Mol	Chain	Res	Type	Clashes	Symm-Clashes
2	A	600	PLP	1	0
2	B	600	PLP	1	0

Continued on next page...

Continued from previous page...

Mol	Chain	Res	Type	Clashes	Symm-Clashes
2	C	600	PLP	1	0
2	D	600	PLP	1	0

5.7 Other polymers [i](#)

There are no such residues in this entry.

5.8 Polymer linkage issues [i](#)

There are no chain breaks in this entry.

6 Fit of model and data ⓘ

6.1 Protein, DNA and RNA chains ⓘ

EDS was not executed - this section will therefore be empty.

6.2 Non-standard residues in protein, DNA, RNA chains ⓘ

EDS was not executed - this section will therefore be empty.

6.3 Carbohydrates ⓘ

EDS was not executed - this section will therefore be empty.

6.4 Ligands ⓘ

EDS was not executed - this section will therefore be empty.

6.5 Other polymers ⓘ

EDS was not executed - this section will therefore be empty.