



Full wwPDB X-ray Structure Validation Report ⓘ

Feb 1, 2016 – 08:32 PM GMT

PDB ID : 4TPM
Title : Crystal structure of 2-(3-alkoxy-1-azetidiny) quinolines as PDE10A Inhibitors
Authors : Chmait, S.
Deposited on : 2014-06-08
Resolution : 2.77 Å(reported)

This is a Full wwPDB X-ray Structure Validation Report for a publicly released PDB entry.
We welcome your comments at validation@mail.wwpdb.org
A user guide is available at
<http://wwpdb.org/validation/2016/XrayValidationReportHelp>
with specific help available everywhere you see the ⓘ symbol.

The following versions of software and data (see [references ⓘ](#)) were used in the production of this report:

MolProbity : 4.02b-467
Mogul : 1.7 (RC4), CSD as536be (2015)
Xtriage (Phenix) : 1.9-1692
EDS : rb-20026688
Percentile statistics : 20151230.v01 (using entries in the PDB archive December 30th 2015)
Refmac : 5.8.0135
CCP4 : 6.5.0
Ideal geometry (proteins) : Engh & Huber (2001)
Ideal geometry (DNA, RNA) : Parkinson et al. (1996)
Validation Pipeline (wwPDB-VP) : trunk26865

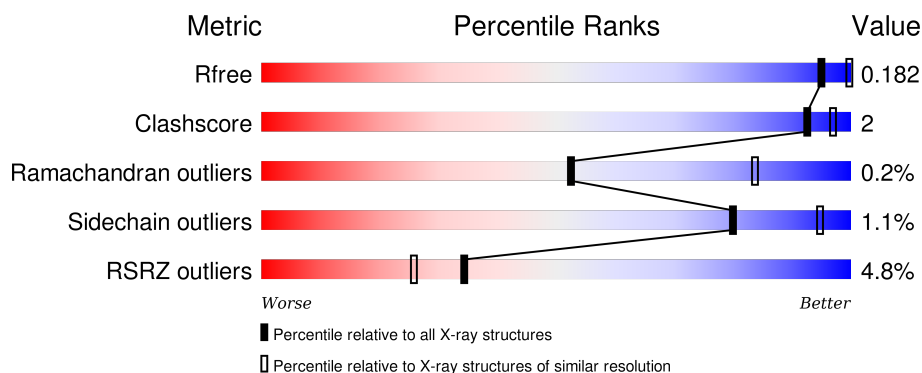
1 Overall quality at a glance

The following experimental techniques were used to determine the structure:

X-RAY DIFFRACTION

The reported resolution of this entry is 2.77 Å.

Percentile scores (ranging between 0-100) for global validation metrics of the entry are shown in the following graphic. The table shows the number of entries on which the scores are based.



Metric	Whole archive (#Entries)	Similar resolution (#Entries, resolution range(Å))
R_{free}	91344	3004 (2.80-2.76)
Clashscore	102246	3480 (2.80-2.76)
Ramachandran outliers	100387	3423 (2.80-2.76)
Sidechain outliers	100360	3425 (2.80-2.76)
RSRZ outliers	91569	3016 (2.80-2.76)

The table below summarises the geometric issues observed across the polymeric chains and their fit to the electron density. The red, orange, yellow and green segments on the lower bar indicate the fraction of residues that contain outliers for ≥ 3 , 2, 1 and 0 types of geometric quality criteria. A grey segment represents the fraction of residues that are not modelled. The numeric value for each fraction is indicated below the corresponding segment, with a dot representing fractions $\leq 5\%$. The upper red bar (where present) indicates the fraction of residues that have poor fit to the electron density. The numeric value is given above the bar.

Mol	Chain	Length	Quality of chain
1	A	351	 5% 81% 5% 14%
1	B	351	 4% 82% 5% 13%

The following table lists non-polymeric compounds, carbohydrate monomers and non-standard residues in protein, DNA, RNA chains that are outliers for geometric or electron-density-fit criteria:

Mol	Type	Chain	Res	Chirality	Geometry	Clashes	Electron density
2	SO4	A	2001	-	-	-	X
2	SO4	A	2003	-	-	-	X
2	SO4	B	2005	-	-	-	X
2	SO4	B	2007	-	-	-	X

2 Entry composition

There are 6 unique types of molecules in this entry. The entry contains 5146 atoms, of which 0 are hydrogens and 0 are deuteriums.

In the tables below, the ZeroOcc column contains the number of atoms modelled with zero occupancy, the AltConf column contains the number of residues with at least one atom in alternate conformation and the Trace column contains the number of residues modelled with at most 2 atoms.

- Molecule 1 is a protein called cAMP and cAMP-inhibited cGMP 3',5'-cyclic phosphodiesterase 10A.

Mol	Chain	Residues	Atoms					ZeroOcc	AltConf	Trace
1	A	303	Total	C	N	O	S	0	0	0
			2457	1573	418	444	22			
1	B	307	Total	C	N	O	S	0	0	0
			2488	1590	425	451	22			

There are 26 discrepancies between the modelled and reference sequences:

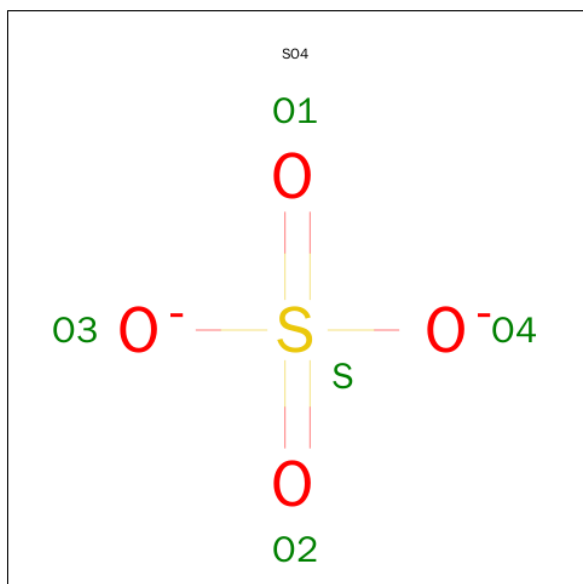
Chain	Residue	Modelled	Actual	Comment	Reference
A	429	MET	-	initiating methionine	UNP Q9Y233
A	430	LYS	-	expression tag	UNP Q9Y233
A	431	HIS	-	expression tag	UNP Q9Y233
A	432	HIS	-	expression tag	UNP Q9Y233
A	433	HIS	-	expression tag	UNP Q9Y233
A	434	HIS	-	expression tag	UNP Q9Y233
A	435	HIS	-	expression tag	UNP Q9Y233
A	436	HIS	-	expression tag	UNP Q9Y233
A	437	HIS	-	expression tag	UNP Q9Y233
A	438	ASP	-	expression tag	UNP Q9Y233
A	439	GLU	-	expression tag	UNP Q9Y233
A	440	VAL	-	expression tag	UNP Q9Y233
A	441	ASP	-	expression tag	UNP Q9Y233
B	429	MET	-	initiating methionine	UNP Q9Y233
B	430	LYS	-	expression tag	UNP Q9Y233
B	431	HIS	-	expression tag	UNP Q9Y233
B	432	HIS	-	expression tag	UNP Q9Y233
B	433	HIS	-	expression tag	UNP Q9Y233
B	434	HIS	-	expression tag	UNP Q9Y233
B	435	HIS	-	expression tag	UNP Q9Y233
B	436	HIS	-	expression tag	UNP Q9Y233
B	437	HIS	-	expression tag	UNP Q9Y233
B	438	ASP	-	expression tag	UNP Q9Y233
B	439	GLU	-	expression tag	UNP Q9Y233

Continued on next page...

Continued from previous page...

Chain	Residue	Modelled	Actual	Comment	Reference
B	440	VAL	-	expression tag	UNP Q9Y233
B	441	ASP	-	expression tag	UNP Q9Y233

- Molecule 2 is SULFATE ION (three-letter code: SO4) (formula: O₄S).



Mol	Chain	Residues	Atoms	ZeroOcc	AltConf
2	A	1	Total O S 5 4 1	0	0
2	A	1	Total O S 5 4 1	0	0
2	A	1	Total O S 5 4 1	0	0
2	A	1	Total O S 5 4 1	0	0
2	A	1	Total O S 5 4 1	0	0
2	A	1	Total O S 5 4 1	0	0
2	A	1	Total O S 5 4 1	0	0
2	B	1	Total O S 5 4 1	0	0
2	B	1	Total O S 5 4 1	0	0
2	B	1	Total O S 5 4 1	0	0

Continued on next page...

Continued from previous page...

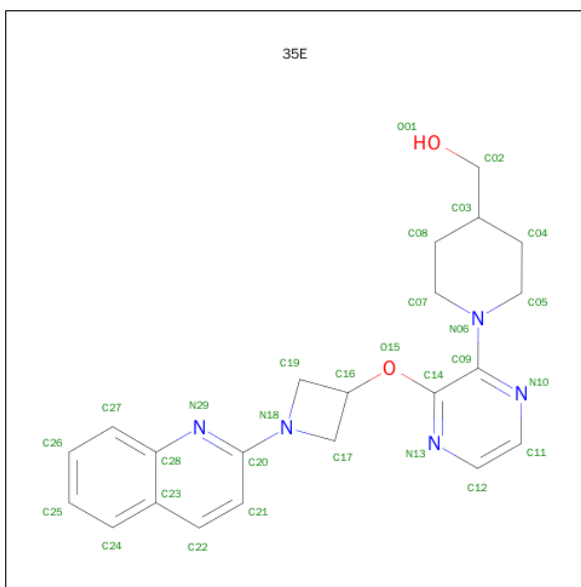
Mol	Chain	Residues	Atoms			ZeroOcc	AltConf
2	B	1	Total	O	S	0	0
			5	4	1		
2	B	1	Total	O	S	0	0
			5	4	1		
2	B	1	Total	O	S	0	0
			5	4	1		
2	B	1	Total	O	S	0	0
			5	4	1		

- Molecule 3 is GLYCEROL (three-letter code: GOL) (formula: C₃H₈O₃).



Mol	Chain	Residues	Atoms			ZeroOcc	AltConf
3	A	1	Total	C	O	0	0
			6	3	3		

- Molecule 4 is [1-(3-{[1-(quinolin-2-yl)azetidin-3-yl]oxy}pyrazin-2-yl)piperidin-4-yl]methanol (three-letter code: 35E) (formula: C₂₂H₂₅N₅O₂).



Mol	Chain	Residues	Atoms				ZeroOcc	AltConf
4	A	1	Total	C	N	O	0	0
			29	22	5	2		
4	B	1	Total	C	N	O	0	0
			29	22	5	2		

- Molecule 5 is ZINC ION (three-letter code: ZN) (formula: Zn).

Mol	Chain	Residues	Atoms		ZeroOcc	AltConf
5	B	2	Total	Zn	0	0
			2	2		
5	A	2	Total	Zn	0	0
			2	2		

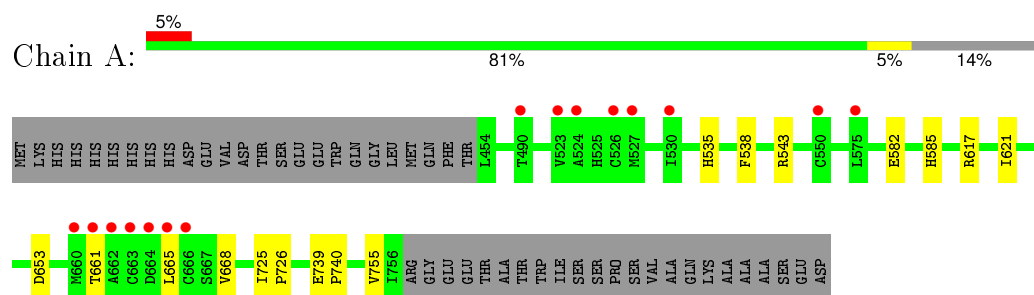
- Molecule 6 is water.

Mol	Chain	Residues	Atoms		ZeroOcc	AltConf
6	A	27	Total	O	0	0
			27	27		
6	B	36	Total	O	0	0
			36	36		

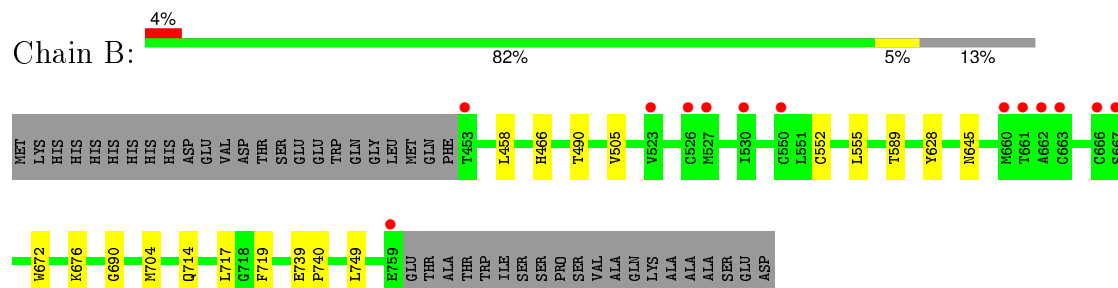
3 Residue-property plots [i](#)

These plots are drawn for all protein, RNA and DNA chains in the entry. The first graphic for a chain summarises the proportions of errors displayed in the second graphic. The second graphic shows the sequence view annotated by issues in geometry and electron density. Residues are color-coded according to the number of geometric quality criteria for which they contain at least one outlier: green = 0, yellow = 1, orange = 2 and red = 3 or more. A red dot above a residue indicates a poor fit to the electron density ($RSRZ > 2$). Stretches of 2 or more consecutive residues without any outlier are shown as a green connector. Residues present in the sample, but not in the model, are shown in grey.

- Molecule 1: cAMP and cAMP-inhibited cGMP 3',5'-cyclic phosphodiesterase 10A



- Molecule 1: cAMP and cAMP-inhibited cGMP 3',5'-cyclic phosphodiesterase 10A



4 Data and refinement statistics

Property	Value	Source
Space group	F 2 3	Depositor
Cell constants a, b, c, α , β , γ	253.88Å 253.88Å 253.88Å 90.00° 90.00° 90.00°	Depositor
Resolution (Å)	29.92 – 2.77 29.92 – 2.77	Depositor EDS
% Data completeness (in resolution range)	99.9 (29.92-2.77) 99.9 (29.92-2.77)	Depositor EDS
R_{merge}	(Not available)	Depositor
R_{sym}	(Not available)	Depositor
$\langle I/\sigma(I) \rangle$ ¹	3.22 (at 2.76Å)	Xtriage
Refinement program	REFMAC 5.8.0071	Depositor
R, R_{free}	0.151 , 0.179 0.158 , 0.182	Depositor DCC
R_{free} test set	1640 reflections (5.01%)	DCC
Wilson B-factor (Å ²)	75.5	Xtriage
Anisotropy	0.000	Xtriage
Bulk solvent k_{sol} (e/Å ³), B_{sol} (Å ²)	0.33 , 38.6	EDS
Estimated twinning fraction	0.544 for H, K, L 0.456 for L, -K, H 0.045 for k,h,l	Xtriage
Reported twinning fraction	0.544 for H, K, L 0.456 for L, -K, H	Depositor
L-test for twinning ²	$\langle L \rangle = 0.50$, $\langle L^2 \rangle = 0.33$	Xtriage
Outliers	1 of 34360 reflections (0.003%)	Xtriage
F_o, F_c correlation	0.97	EDS
Total number of atoms	5146	wwPDB-VP
Average B, all atoms (Å ²)	74.0	wwPDB-VP

Xtriage's analysis on translational NCS is as follows: *The largest off-origin peak in the Patterson function is 2.14% of the height of the origin peak. No significant pseudotranslation is detected.*

¹Intensities estimated from amplitudes.

²Theoretical values of $\langle |L| \rangle$, $\langle L^2 \rangle$ for acentric reflections are 0.5, 0.375 respectively for untwinned datasets, and 0.333, 0.2 for perfectly twinned datasets.

5 Model quality

5.1 Standard geometry

Bond lengths and bond angles in the following residue types are not validated in this section: GOL, 35E, ZN, SO4

The Z score for a bond length (or angle) is the number of standard deviations the observed value is removed from the expected value. A bond length (or angle) with $|Z| > 5$ is considered an outlier worth inspection. RMSZ is the root-mean-square of all Z scores of the bond lengths (or angles).

Mol	Chain	Bond lengths		Bond angles	
		RMSZ	$\# Z > 5$	RMSZ	$\# Z > 5$
1	A	0.34	0/2518	0.51	0/3411
1	B	0.34	0/2549	0.51	0/3452
All	All	0.34	0/5067	0.51	0/6863

There are no bond length outliers.

There are no bond angle outliers.

There are no chirality outliers.

There are no planarity outliers.

5.2 Too-close contacts

In the following table, the Non-H and H(model) columns list the number of non-hydrogen atoms and hydrogen atoms in the chain respectively. The H(added) column lists the number of hydrogen atoms added and optimized by MolProbity. The Clashes column lists the number of clashes within the asymmetric unit, whereas Symm-Clashes lists symmetry related clashes.

Mol	Chain	Non-H	H(model)	H(added)	Clashes	Symm-Clashes
1	A	2457	0	2432	9	0
1	B	2488	0	2461	9	0
2	A	35	0	0	0	0
2	B	35	0	0	0	0
3	A	6	0	8	0	0
4	A	29	0	25	2	0
4	B	29	0	25	2	0
5	A	2	0	0	0	0
5	B	2	0	0	0	0
6	A	27	0	0	0	0
6	B	36	0	0	0	0
All	All	5146	0	4951	20	0

The all-atom clashscore is defined as the number of clashes found per 1000 atoms (including hydrogen atoms). The all-atom clashscore for this structure is 2.

All (20) close contacts within the same asymmetric unit are listed below, sorted by their clash magnitude.

Atom-1	Atom-2	Interatomic distance (Å)	Clash overlap (Å)
1:B:552:CYS:SG	1:B:589:THR:HG23	2.50	0.52
4:A:2009:35E:C05	4:A:2009:35E:O15	2.58	0.52
4:A:2009:35E:H8	4:A:2009:35E:O15	2.09	0.51
4:B:2008:35E:C05	4:B:2008:35E:O15	2.60	0.50
1:A:617:ARG:O	1:A:621:ILE:HG12	2.12	0.49
1:A:725:ILE:HB	1:A:726:PRO:HD3	1.94	0.48
1:A:628:TYR:CD1	1:A:661:THR:HG21	2.48	0.48
1:B:717:LEU:HD12	1:B:749:LEU:HD11	1.96	0.46
1:B:719:PHE:CD1	4:B:2008:35E:H18	2.51	0.46
1:A:665:LEU:O	1:A:668:VAL:HG22	2.16	0.46
1:B:714:GLN:OE1	1:B:717:LEU:HD23	2.17	0.45
1:B:672:TRP:CZ2	1:B:676:LYS:HD3	2.52	0.44
1:A:538:PHE:O	1:A:543:ARG:NH1	2.51	0.43
1:B:505:VAL:HG13	1:B:555:LEU:HD21	2.00	0.43
1:B:739:GLU:N	1:B:740:PRO:CD	2.82	0.42
1:A:582:GLU:HA	1:A:585:HIS:CD2	2.54	0.42
1:A:739:GLU:N	1:A:740:PRO:CD	2.84	0.41
1:A:649:GLN:NE2	1:A:653:ASP:OD1	2.53	0.41
1:A:538:PHE:O	1:B:645:ASN:ND2	2.39	0.41
1:B:690:GLY:HA3	1:B:704:MET:O	2.20	0.40

There are no symmetry-related clashes.

5.3 Torsion angles

5.3.1 Protein backbone

In the following table, the Percentiles column shows the percent Ramachandran outliers of the chain as a percentile score with respect to all X-ray entries followed by that with respect to entries of similar resolution.

The Analysed column shows the number of residues for which the backbone conformation was analysed, and the total number of residues.

Mol	Chain	Analysed	Favoured	Allowed	Outliers	Percentiles
1	A	301/351 (86%)	288 (96%)	12 (4%)	1 (0%)	46 78

Continued on next page...

Continued from previous page...

Mol	Chain	Analysed	Favoured	Allowed	Outliers	Percentiles	
1	B	305/351 (87%)	296 (97%)	9 (3%)	0	100	100
All	All	606/702 (86%)	584 (96%)	21 (4%)	1 (0%)	52	84

All (1) Ramachandran outliers are listed below:

Mol	Chain	Res	Type
1	A	755	VAL

5.3.2 Protein sidechains ⓘ

In the following table, the Percentiles column shows the percent sidechain outliers of the chain as a percentile score with respect to all X-ray entries followed by that with respect to entries of similar resolution.

The Analysed column shows the number of residues for which the sidechain conformation was analysed, and the total number of residues.

Mol	Chain	Analysed	Rotameric	Outliers	Percentiles	
1	A	274/315 (87%)	272 (99%)	2 (1%)	88	97
1	B	277/315 (88%)	273 (99%)	4 (1%)	74	93
All	All	551/630 (88%)	545 (99%)	6 (1%)	80	95

All (6) residues with a non-rotameric sidechain are listed below:

Mol	Chain	Res	Type
1	A	535	HIS
1	A	628	TYR
1	B	458	LEU
1	B	466	HIS
1	B	490	THR
1	B	628	TYR

Some sidechains can be flipped to improve hydrogen bonding and reduce clashes. There are no such sidechains identified.

5.3.3 RNA ⓘ

There are no RNA molecules in this entry.

5.4 Non-standard residues in protein, DNA, RNA chains ⓘ

There are no non-standard protein/DNA/RNA residues in this entry.

5.5 Carbohydrates ⓘ

There are no carbohydrates in this entry.

5.6 Ligand geometry ⓘ

Of 21 ligands modelled in this entry, 4 are monoatomic - leaving 17 for Mogul analysis.

In the following table, the Counts columns list the number of bonds (or angles) for which Mogul statistics could be retrieved, the number of bonds (or angles) that are observed in the model and the number of bonds (or angles) that are defined in the chemical component dictionary. The Link column lists molecule types, if any, to which the group is linked. The Z score for a bond length (or angle) is the number of standard deviations the observed value is removed from the expected value. A bond length (or angle) with $|Z| > 2$ is considered an outlier worth inspection. RMSZ is the root-mean-square of all Z scores of the bond lengths (or angles).

Mol	Type	Chain	Res	Link	Bond lengths			Bond angles		
					Counts	RMSZ	$\# Z > 2$	Counts	RMSZ	$\# Z > 2$
2	SO4	A	2001	-	4,4,4	0.40	0	6,6,6	0.26	0
2	SO4	A	2002	-	4,4,4	0.41	0	6,6,6	0.13	0
2	SO4	A	2003	-	4,4,4	0.34	0	6,6,6	0.19	0
2	SO4	A	2004	-	4,4,4	0.37	0	6,6,6	0.29	0
2	SO4	A	2005	-	4,4,4	0.41	0	6,6,6	0.17	0
2	SO4	A	2006	-	4,4,4	0.42	0	6,6,6	0.11	0
2	SO4	A	2007	-	4,4,4	0.40	0	6,6,6	0.13	0
3	GOL	A	2008	-	5,5,5	0.28	0	5,5,5	0.28	0
4	35E	A	2009	-	29,33,33	1.90	7 (24%)	35,46,46	1.76	9 (25%)
2	SO4	B	2001	-	4,4,4	0.49	0	6,6,6	0.35	0
2	SO4	B	2002	-	4,4,4	0.43	0	6,6,6	0.23	0
2	SO4	B	2003	-	4,4,4	0.38	0	6,6,6	0.10	0
2	SO4	B	2004	-	4,4,4	0.51	0	6,6,6	0.09	0
2	SO4	B	2005	-	4,4,4	0.36	0	6,6,6	0.21	0
2	SO4	B	2006	-	4,4,4	0.41	0	6,6,6	0.09	0
2	SO4	B	2007	-	4,4,4	0.45	0	6,6,6	0.33	0
4	35E	B	2008	-	29,33,33	1.86	7 (24%)	35,46,46	1.72	10 (28%)

In the following table, the Chirals column lists the number of chiral outliers, the number of chiral centers analysed, the number of these observed in the model and the number defined in the chemical component dictionary. Similar counts are reported in the Torsion and Rings columns. '-' means no outliers of that kind were identified.

Mol	Type	Chain	Res	Link	Chirals	Torsions	Rings
2	SO4	A	2001	-	-	0/0/0/0	0/0/0/0
2	SO4	A	2002	-	-	0/0/0/0	0/0/0/0
2	SO4	A	2003	-	-	0/0/0/0	0/0/0/0
2	SO4	A	2004	-	-	0/0/0/0	0/0/0/0
2	SO4	A	2005	-	-	0/0/0/0	0/0/0/0
2	SO4	A	2006	-	-	0/0/0/0	0/0/0/0
2	SO4	A	2007	-	-	0/0/0/0	0/0/0/0
3	GOL	A	2008	-	-	0/4/4/4	0/0/0/0
4	35E	A	2009	-	-	0/10/32/32	0/5/5/5
2	SO4	B	2001	-	-	0/0/0/0	0/0/0/0
2	SO4	B	2002	-	-	0/0/0/0	0/0/0/0
2	SO4	B	2003	-	-	0/0/0/0	0/0/0/0
2	SO4	B	2004	-	-	0/0/0/0	0/0/0/0
2	SO4	B	2005	-	-	0/0/0/0	0/0/0/0
2	SO4	B	2006	-	-	0/0/0/0	0/0/0/0
2	SO4	B	2007	-	-	0/0/0/0	0/0/0/0
4	35E	B	2008	-	-	0/10/32/32	0/5/5/5

All (14) bond length outliers are listed below:

Mol	Chain	Res	Type	Atoms	Z	Observed(Å)	Ideal(Å)
4	A	2009	35E	C23-C28	-2.49	1.38	1.42
4	B	2008	35E	C04-C03	-2.07	1.46	1.52
4	B	2008	35E	C23-C28	-2.03	1.39	1.42
4	A	2009	35E	C02-C03	2.01	1.56	1.52
4	B	2008	35E	C05-N06	2.25	1.50	1.46
4	A	2009	35E	C05-N06	2.30	1.50	1.46
4	A	2009	35E	C22-C21	2.88	1.42	1.36
4	B	2008	35E	C22-C21	3.07	1.43	1.36
4	A	2009	35E	C20-N18	3.45	1.44	1.37
4	B	2008	35E	C20-N18	3.50	1.44	1.37
4	B	2008	35E	C20-N29	4.12	1.38	1.32
4	A	2009	35E	C20-N29	4.12	1.38	1.32
4	B	2008	35E	C09-N06	4.21	1.46	1.36
4	A	2009	35E	C09-N06	4.31	1.46	1.36

All (19) bond angle outliers are listed below:

Mol	Chain	Res	Type	Atoms	Z	Observed(°)	Ideal(°)
4	B	2008	35E	C19-N18-C17	-4.59	89.20	94.88
4	A	2009	35E	C19-N18-C17	-4.51	89.30	94.88
4	A	2009	35E	C12-C11-N10	-2.95	118.59	122.25
4	B	2008	35E	C12-C11-N10	-2.68	118.93	122.25

Continued on next page...

Continued from previous page...

Mol	Chain	Res	Type	Atoms	Z	Observed(°)	Ideal(°)
4	B	2008	35E	C08-C03-C02	-2.10	107.09	111.49
4	B	2008	35E	C05-N06-C07	2.05	115.89	111.59
4	B	2008	35E	O01-C02-C03	2.10	117.97	111.95
4	A	2009	35E	C05-N06-C07	2.10	116.01	111.59
4	B	2008	35E	N29-C20-N18	2.29	119.34	116.75
4	A	2009	35E	O01-C02-C03	2.30	118.56	111.95
4	B	2008	35E	C20-N29-C28	2.44	120.86	117.69
4	A	2009	35E	C20-N29-C28	2.57	121.03	117.69
4	B	2008	35E	C11-N10-C09	2.60	120.88	115.14
4	B	2008	35E	C08-C07-N06	2.61	115.98	111.01
4	A	2009	35E	C11-N10-C09	2.83	121.40	115.14
4	A	2009	35E	C04-C05-N06	2.98	116.69	111.01
4	A	2009	35E	C08-C07-N06	3.26	117.22	111.01
4	A	2009	35E	N29-C20-N18	3.55	120.77	116.75
4	B	2008	35E	C04-C05-N06	3.58	117.82	111.01

There are no chirality outliers.

There are no torsion outliers.

There are no ring outliers.

2 monomers are involved in 4 short contacts:

Mol	Chain	Res	Type	Clashes	Symm-Clashes
4	A	2009	35E	2	0
4	B	2008	35E	2	0

5.7 Other polymers [i](#)

There are no such residues in this entry.

5.8 Polymer linkage issues [i](#)

There are no chain breaks in this entry.

6 Fit of model and data ⓘ

6.1 Protein, DNA and RNA chains ⓘ

In the following table, the column labelled ‘#RSRZ> 2’ contains the number (and percentage) of RSRZ outliers, followed by percent RSRZ outliers for the chain as percentile scores relative to all X-ray entries and entries of similar resolution. The OWAB column contains the minimum, median, 95th percentile and maximum values of the occupancy-weighted average B-factor per residue. The column labelled ‘Q< 0.9’ lists the number of (and percentage) of residues with an average occupancy less than 0.9.

Mol	Chain	Analysed	<RSRZ>	#RSRZ>2	OWAB(Å ²)	Q<0.9
1	A	303/351 (86%)	0.14	16 (5%) 30 22	56, 79, 101, 111	0
1	B	307/351 (87%)	-0.04	13 (4%) 40 32	51, 66, 88, 123	0
All	All	610/702 (86%)	0.05	29 (4%) 34 26	51, 73, 95, 123	0

All (29) RSRZ outliers are listed below:

Mol	Chain	Res	Type	RSRZ
1	A	663	CYS	4.6
1	B	663	CYS	4.4
1	A	661	THR	3.3
1	B	759	GLU	3.2
1	B	526	CYS	3.1
1	A	526	CYS	3.0
1	B	550	CYS	2.9
1	B	660	MET	2.9
1	B	527	MET	2.8
1	A	523	VAL	2.7
1	A	660	MET	2.7
1	A	664	ASP	2.7
1	B	667	SER	2.7
1	B	662	ALA	2.6
1	A	666	CYS	2.6
1	A	527	MET	2.6
1	A	490	THR	2.6
1	A	550	CYS	2.5
1	A	665	LEU	2.5
1	B	661	THR	2.5
1	A	662	ALA	2.3
1	B	666	CYS	2.2
1	A	530	ILE	2.2
1	A	575	LEU	2.2

Continued on next page...

Continued from previous page...

Mol	Chain	Res	Type	RSRZ
1	A	637	GLU	2.2
1	B	453	THR	2.2
1	B	523	VAL	2.2
1	B	530	ILE	2.0
1	A	524	ALA	2.0

6.2 Non-standard residues in protein, DNA, RNA chains [i](#)

There are no non-standard protein/DNA/RNA residues in this entry.

6.3 Carbohydrates [i](#)

There are no carbohydrates in this entry.

6.4 Ligands [i](#)

In the following table, the Atoms column lists the number of modelled atoms in the group and the number defined in the chemical component dictionary. LLDF column lists the quality of electron density of the group with respect to its neighbouring residues in protein, DNA or RNA chains. The B-factors column lists the minimum, median, 95th percentile and maximum values of B factors of atoms in the group. The column labelled 'Q < 0.9' lists the number of atoms with occupancy less than 0.9.

Mol	Type	Chain	Res	Atoms	RSCC	RSR	LLDF	B-factors(Å ²)	Q<0.9
2	SO4	A	2003	5/5	0.95	0.51	7.60	69,69,74,79	5
2	SO4	B	2005	5/5	0.90	0.33	6.71	64,65,67,70	5
2	SO4	B	2007	5/5	0.98	0.34	5.31	85,91,95,99	0
2	SO4	A	2001	5/5	0.86	0.26	2.02	95,106,108,111	0
2	SO4	A	2004	5/5	0.97	0.19	1.96	74,77,79,82	5
4	35E	A	2009	29/29	0.90	0.23	0.53	67,70,79,81	0
4	35E	B	2008	29/29	0.93	0.19	0.06	58,62,70,72	0
2	SO4	B	2001	5/5	0.92	0.16	-0.15	83,91,98,101	0
5	ZN	B	2010	1/1	0.99	0.16	-0.65	73,73,73,73	0
5	ZN	A	2010	1/1	0.98	0.15	-0.82	82,82,82,82	0
5	ZN	B	2009	1/1	1.00	0.18	-1.04	68,68,68,68	0
5	ZN	A	2011	1/1	0.99	0.18	-1.26	79,79,79,79	0
2	SO4	B	2004	5/5	0.98	0.08	-1.79	78,79,84,85	0
2	SO4	A	2002	5/5	0.97	0.10	-1.87	102,105,107,109	0
2	SO4	A	2006	5/5	0.93	0.34	-	100,103,104,107	5
2	SO4	B	2002	5/5	0.92	0.26	-	105,107,112,118	0

Continued on next page...

Continued from previous page...

Mol	Type	Chain	Res	Atoms	RSCC	RSR	LLDF	B-factors(\AA^2)	Q<0.9
2	SO4	A	2005	5/5	0.93	0.35	-	66,68,70,70	5
2	SO4	B	2003	5/5	0.89	0.49	-	137,139,144,144	0
3	GOL	A	2008	6/6	0.86	0.51	-	99,101,105,105	0
2	SO4	A	2007	5/5	0.91	0.48	-	63,63,66,67	5
2	SO4	B	2006	5/5	0.91	0.37	-	118,122,123,124	0

6.5 Other polymers [i](#)

There are no such residues in this entry.