



Full wwPDB X-ray Structure Validation Report ⓘ

Feb 1, 2016 – 01:23 PM GMT

PDB ID : 3TTR
Title : Crystal structure of C-lobe of bovine lactoferrin complexed with Lidocaine at 2.27 Å resolution
Authors : Yamini, S.; Gautam, L.; Singh, A.; Sinha, M.; Kaur, P.; Sharma, S.; Singh, T.P.
Deposited on : 2011-09-15
Resolution : 2.27 Å(reported)

This is a Full wwPDB X-ray Structure Validation Report for a publicly released PDB entry.
We welcome your comments at validation@mail.wwpdb.org
A user guide is available at
<http://wwpdb.org/validation/2016/XrayValidationReportHelp>
with specific help available everywhere you see the ⓘ symbol.

The following versions of software and data (see [references ⓘ](#)) were used in the production of this report:

MolProbity : 4.02b-467
Mogul : 1.7 (RC4), CSD as536be (2015)
Xtriage (Phenix) : 1.9-1692
EDS : rb-20026688
Percentile statistics : 20151230.v01 (using entries in the PDB archive December 30th 2015)
Refmac : 5.8.0135
CCP4 : 6.5.0
Ideal geometry (proteins) : Engh & Huber (2001)
Ideal geometry (DNA, RNA) : Parkinson et al. (1996)
Validation Pipeline (wwPDB-VP) : trunk26865

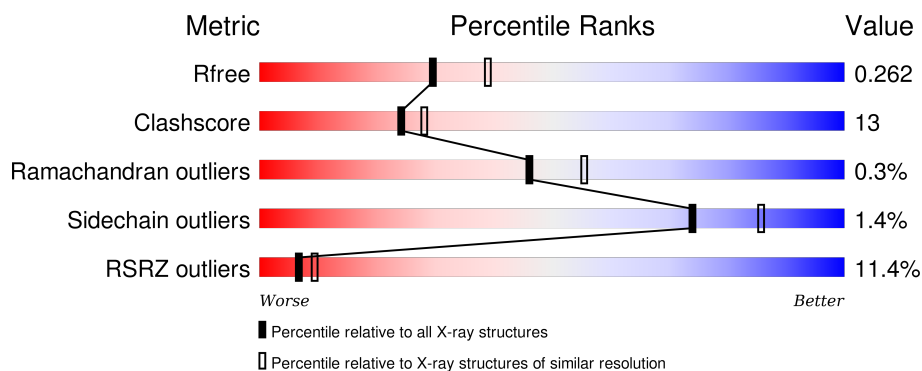
1 Overall quality at a glance

The following experimental techniques were used to determine the structure:

X-RAY DIFFRACTION

The reported resolution of this entry is 2.27 Å.

Percentile scores (ranging between 0-100) for global validation metrics of the entry are shown in the following graphic. The table shows the number of entries on which the scores are based.



Metric	Whole archive (#Entries)	Similar resolution (#Entries, resolution range(Å))
R_{free}	91344	5193 (2.30-2.26)
Clashscore	102246	5929 (2.30-2.26)
Ramachandran outliers	100387	5851 (2.30-2.26)
Sidechain outliers	100360	5850 (2.30-2.26)
RSRZ outliers	91569	5204 (2.30-2.26)

The table below summarises the geometric issues observed across the polymeric chains and their fit to the electron density. The red, orange, yellow and green segments on the lower bar indicate the fraction of residues that contain outliers for ≥ 3 , 2, 1 and 0 types of geometric quality criteria. A grey segment represents the fraction of residues that are not modelled. The numeric value for each fraction is indicated below the corresponding segment, with a dot representing fractions $\leq 5\%$. The upper red bar (where present) indicates the fraction of residues that have poor fit to the electron density. The numeric value is given above the bar.

Mol	Chain	Length	Quality of chain
1	A	345	

The following table lists non-polymeric compounds, carbohydrate monomers and non-standard residues in protein, DNA, RNA chains that are outliers for geometric or electron-density-fit criteria:

Mol	Type	Chain	Res	Chirality	Geometry	Clashes	Electron density
2	NAG	A	2	-	-	-	X

Continued on next page...

Continued from previous page...

Mol	Type	Chain	Res	Chirality	Geometry	Clashes	Electron density
8	LQZ	A	90	-	-	X	X

2 Entry composition [i](#)

There are 9 unique types of molecules in this entry. The entry contains 2982 atoms, of which 0 are hydrogens and 0 are deuteriums.

In the tables below, the ZeroOcc column contains the number of atoms modelled with zero occupancy, the AltConf column contains the number of residues with at least one atom in alternate conformation and the Trace column contains the number of residues modelled with at most 2 atoms.

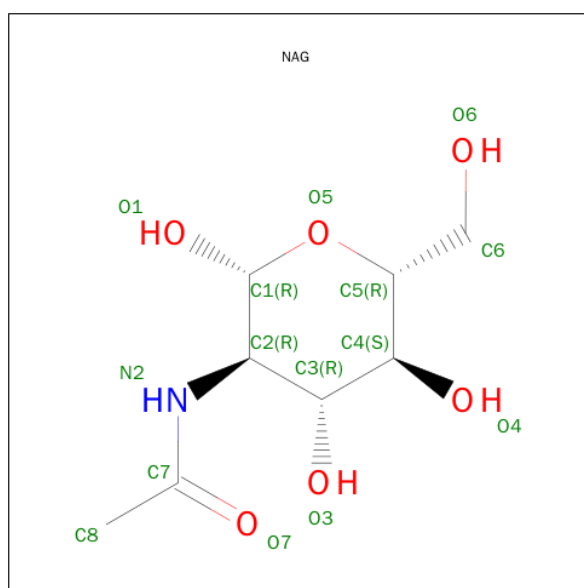
- Molecule 1 is a protein called Lactotransferrin.

Mol	Chain	Residues	Atoms					ZeroOcc	AltConf	Trace
			Total	C	N	O	S			
1	A	341	2604	1622	454	507	21	0	0	0

There are 2 discrepancies between the modelled and reference sequences:

Chain	Residue	Modelled	Actual	Comment	Reference
A	565	LYS	ASN	SEE REMARK 999	UNP P24627
A	608	GLU	LYS	SEE REMARK 999	UNP P24627

- Molecule 2 is SUGAR (N-ACETYL-D-GLUCOSAMINE) (three-letter code: NAG) (formula: $C_8H_{15}NO_6$).



Mol	Chain	Residues	Atoms				ZeroOcc	AltConf
			Total	C	N	O		
2	A	1	14	8	1	5	0	0

- Molecule 3 is a polymer of unknown type called SUGAR (2-MER).

Mol	Chain	Residues	Atoms				ZeroOcc	AltConf
3	A	2	Total	C	N	O	0	0
			28	16	2	10		
3	A	2	Total	C	N	O	0	0
			28	16	2	10		

- Molecule 4 is SULFATE ION (three-letter code: SO4) (formula: O₄S).



Mol	Chain	Residues	Atoms			ZeroOcc	AltConf
4	A	1	Total	O	S	0	0
			5	4	1		

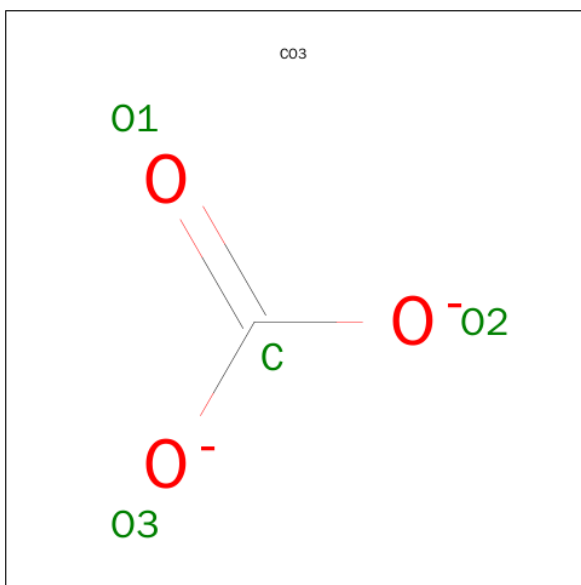
- Molecule 5 is ZINC ION (three-letter code: ZN) (formula: Zn).

Mol	Chain	Residues	Atoms		ZeroOcc	AltConf
5	A	2	Total	Zn	0	0
			2	2		

- Molecule 6 is FE (III) ION (three-letter code: FE) (formula: Fe).

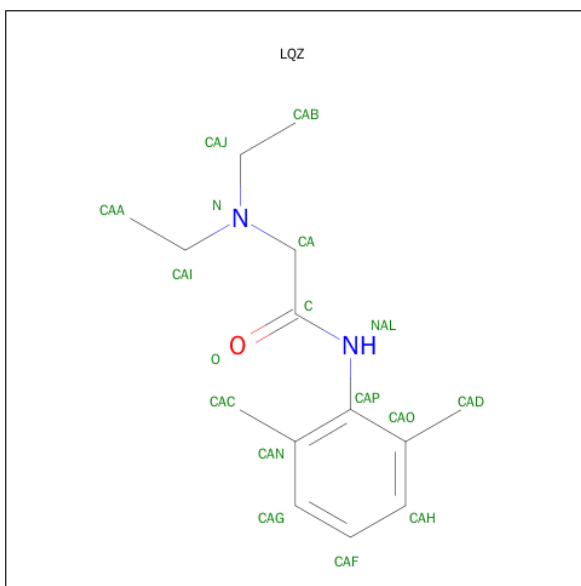
Mol	Chain	Residues	Atoms		ZeroOcc	AltConf
6	A	1	Total	Fe	0	0
			1	1		

- Molecule 7 is CARBONATE ION (three-letter code: CO3) (formula: CO₃).



Mol	Chain	Residues	Atoms			ZeroOcc	AltConf
7	A	1	Total	C	O	0	0
			4	1	3		

- Molecule 8 is 2-(DIETHYLAMINO)-N-(2,6-DIMETHYLPHENYL)ETHANAMIDE (three-letter code: LQZ) (formula: C₁₄H₂₂N₂O).



Mol	Chain	Residues	Atoms				ZeroOcc	AltConf
8	A	1	Total	C	N	O	0	0
			17	14	2	1		

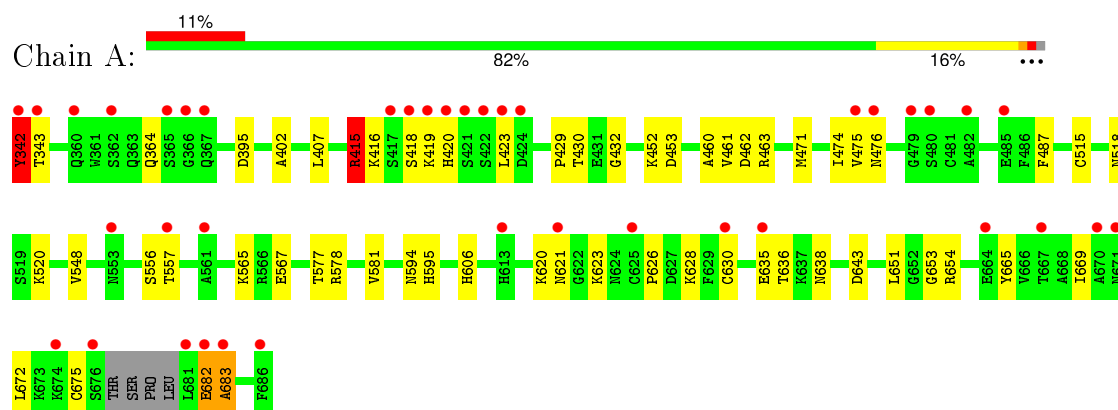
- Molecule 9 is water.

Mol	Chain	Residues	Atoms		ZeroOcc	AltConf
9	A	279	Total 279	O 279	0	0

3 Residue-property plots [i](#)

These plots are drawn for all protein, RNA and DNA chains in the entry. The first graphic for a chain summarises the proportions of errors displayed in the second graphic. The second graphic shows the sequence view annotated by issues in geometry and electron density. Residues are color-coded according to the number of geometric quality criteria for which they contain at least one outlier: green = 0, yellow = 1, orange = 2 and red = 3 or more. A red dot above a residue indicates a poor fit to the electron density ($\text{RSRZ} > 2$). Stretches of 2 or more consecutive residues without any outlier are shown as a green connector. Residues present in the sample, but not in the model, are shown in grey.

- Molecule 1: Lactotransferrin



4 Data and refinement statistics

Property	Value	Source
Space group	P 1 21 1	Depositor
Cell constants a, b, c, α , β , γ	62.67Å 50.42Å 65.89Å 90.00° 107.33° 90.00°	Depositor
Resolution (Å)	39.34 – 2.27 39.34 – 2.27	Depositor EDS
% Data completeness (in resolution range)	97.3 (39.34-2.27) 97.5 (39.34-2.27)	Depositor EDS
R_{merge}	(Not available)	Depositor
R_{sym}	0.05	Depositor
$\langle I/\sigma(I) \rangle$ ¹	1.94 (at 2.27Å)	Xtriage
Refinement program	CNS 1.1	Depositor
R, R_{free}	0.221 , 0.241 0.231 , 0.262	Depositor DCC
R_{free} test set	919 reflections (5.12%)	DCC
Wilson B-factor (Å ²)	33.9	Xtriage
Anisotropy	0.264	Xtriage
Bulk solvent k_{sol} (e/Å ³), B_{sol} (Å ²)	0.45 , 83.8	EDS
Estimated twinning fraction	No twinning to report.	Xtriage
L-test for twinning ²	$\langle L \rangle = 0.51$, $\langle L^2 \rangle = 0.35$	Xtriage
Outliers	0 of 17965 reflections	Xtriage
F_o, F_c correlation	0.94	EDS
Total number of atoms	2982	wwPDB-VP
Average B, all atoms (Å ²)	39.0	wwPDB-VP

Xtriage's analysis on translational NCS is as follows: *The largest off-origin peak in the Patterson function is 7.23% of the height of the origin peak. No significant pseudotranslation is detected.*

¹Intensities estimated from amplitudes.

²Theoretical values of $\langle |L| \rangle$, $\langle L^2 \rangle$ for acentric reflections are 0.5, 0.375 respectively for untwinned datasets, and 0.333, 0.2 for perfectly twinned datasets.

5 Model quality

5.1 Standard geometry

Bond lengths and bond angles in the following residue types are not validated in this section: ZN, NAG, LQZ, CO3, SO4, FE

The Z score for a bond length (or angle) is the number of standard deviations the observed value is removed from the expected value. A bond length (or angle) with $|Z| > 5$ is considered an outlier worth inspection. RMSZ is the root-mean-square of all Z scores of the bond lengths (or angles).

Mol	Chain	Bond lengths		Bond angles	
		RMSZ	$\# Z > 5$	RMSZ	$\# Z > 5$
1	A	0.54	0/2652	0.81	7/3591 (0.2%)

Chiral center outliers are detected by calculating the chiral volume of a chiral center and verifying if the center is modelled as a planar moiety or with the opposite hand. A planarity outlier is detected by checking planarity of atoms in a peptide group, atoms in a mainchain group or atoms of a sidechain that are expected to be planar.

Mol	Chain	#Chirality outliers	#Planarity outliers
1	A	0	2

There are no bond length outliers.

All (7) bond angle outliers are listed below:

Mol	Chain	Res	Type	Atoms	Z	Observed($^{\circ}$)	Ideal($^{\circ}$)
1	A	475	VAL	O-C-N	6.98	133.87	122.70
1	A	476	ASN	O-C-N	-6.39	112.48	122.70
1	A	475	VAL	CA-C-N	-6.01	103.98	117.20
1	A	475	VAL	C-N-CA	-5.47	108.02	121.70
1	A	623	LYS	CB-CA-C	-5.39	99.62	110.40
1	A	342	TYR	N-CA-C	-5.20	96.97	111.00
1	A	342	TYR	CB-CA-C	5.17	120.75	110.40

There are no chirality outliers.

All (2) planarity outliers are listed below:

Mol	Chain	Res	Type	Group
1	A	342	TYR	Peptide
1	A	415	ARG	Sidechain

5.2 Too-close contacts ⓘ

In the following table, the Non-H and H(model) columns list the number of non-hydrogen atoms and hydrogen atoms in the chain respectively. The H(added) column lists the number of hydrogen atoms added and optimized by MolProbity. The Clashes column lists the number of clashes within the asymmetric unit, whereas Symm-Clashes lists symmetry related clashes.

Mol	Chain	Non-H	H(model)	H(added)	Clashes	Symm-Clashes
1	A	2604	0	2518	62	0
2	A	14	0	13	0	0
3	A	56	0	50	0	0
4	A	5	0	0	0	0
5	A	2	0	0	0	0
6	A	1	0	0	0	0
7	A	4	0	0	0	0
8	A	17	0	22	16	0
9	A	279	0	0	0	0
All	All	2982	0	2603	69	0

The all-atom clashscore is defined as the number of clashes found per 1000 atoms (including hydrogen atoms). The all-atom clashscore for this structure is 13.

All (69) close contacts within the same asymmetric unit are listed below, sorted by their clash magnitude.

Atom-1	Atom-2	Interatomic distance (Å)	Clash overlap (Å)
1:A:343:THR:HA	1:A:606:HIS:CE1	1.75	1.22
1:A:635:GLU:O	1:A:636:THR:HG22	1.48	1.11
1:A:635:GLU:O	1:A:636:THR:CG2	2.11	0.97
1:A:565:LYS:HD3	1:A:567:GLU:H	1.31	0.96
1:A:343:THR:HA	1:A:606:HIS:NE2	1.82	0.95
8:A:90:LQZ:C	8:A:90:LQZ:HAC	1.96	0.94
1:A:430:THR:HG23	8:A:90:LQZ:HAB	1.54	0.86
1:A:343:THR:HG22	1:A:606:HIS:NE2	1.92	0.84
1:A:430:THR:HB	1:A:594:ASN:ND2	1.93	0.84
8:A:90:LQZ:HAC	8:A:90:LQZ:O	1.79	0.82
1:A:343:THR:HA	1:A:606:HIS:HE1	1.43	0.80
1:A:429:PRO:HB3	8:A:90:LQZ:HADB	1.64	0.79
8:A:90:LQZ:HAAC	8:A:90:LQZ:NAL	1.99	0.77
1:A:635:GLU:C	1:A:636:THR:HG22	2.06	0.76
1:A:620:LYS:C	1:A:621:ASN:HD22	1.91	0.75
1:A:556:SER:O	1:A:557:THR:HB	1.87	0.74
1:A:430:THR:HG23	8:A:90:LQZ:CAB	2.18	0.74
1:A:343:THR:CG2	1:A:606:HIS:NE2	2.55	0.68

Continued on next page...

Continued from previous page...

Atom-1	Atom-2	Interatomic distance (Å)	Clash overlap (Å)
1:A:343:THR:CA	1:A:606:HIS:NE2	2.56	0.68
1:A:430:THR:H	8:A:90:LQZ:HABB	1.59	0.67
1:A:638:ASN:HD22	1:A:643:ASP:H	1.42	0.65
1:A:626:PRO:HA	1:A:630:CYS:SG	2.36	0.65
1:A:430:THR:HB	1:A:594:ASN:HD22	1.61	0.64
1:A:556:SER:O	1:A:557:THR:CB	2.45	0.63
8:A:90:LQZ:CAP	8:A:90:LQZ:HAAC	2.30	0.61
1:A:419:LYS:O	1:A:420:HIS:HB2	2.02	0.60
1:A:460:ALA:HB3	1:A:463:ARG:HD3	1.84	0.59
1:A:682:GLU:O	1:A:683:ALA:CB	2.51	0.59
1:A:429:PRO:HB3	8:A:90:LQZ:CAD	2.32	0.59
1:A:452:LYS:O	1:A:453:ASP:HB2	2.02	0.58
1:A:565:LYS:HD3	1:A:567:GLU:N	2.12	0.57
1:A:638:ASN:ND2	1:A:643:ASP:H	2.01	0.57
1:A:565:LYS:CD	1:A:567:GLU:H	2.12	0.56
1:A:364:GLN:OE1	1:A:628:LYS:HB3	2.07	0.55
1:A:651:LEU:O	8:A:90:LQZ:HAA	2.07	0.54
1:A:415:ARG:NH1	1:A:415:ARG:HG2	2.22	0.54
1:A:682:GLU:O	1:A:683:ALA:HB2	2.08	0.53
1:A:665:TYR:CZ	1:A:669:ILE:HD11	2.44	0.53
1:A:418:SER:C	1:A:419:LYS:HG2	2.29	0.52
1:A:471:MET:HE1	1:A:474:ILE:HD12	1.92	0.51
1:A:395:ASP:HA	1:A:595:HIS:CD2	2.45	0.51
1:A:651:LEU:CD2	8:A:90:LQZ:HAJA	2.40	0.50
1:A:565:LYS:HD2	1:A:567:GLU:HB2	1.94	0.50
1:A:577:THR:HG22	1:A:578:ARG:N	2.25	0.49
8:A:90:LQZ:CAA	8:A:90:LQZ:NAL	2.71	0.48
1:A:420:HIS:O	1:A:423:LEU:HB2	2.14	0.48
1:A:548:VAL:HG11	1:A:581:VAL:HG11	1.96	0.47
1:A:653:GLY:O	1:A:654:ARG:C	2.53	0.46
1:A:461:VAL:O	1:A:462:ASP:HB2	2.16	0.46
1:A:471:MET:CE	1:A:487:PHE:HE2	2.29	0.46
1:A:651:LEU:HD23	8:A:90:LQZ:HAJA	1.99	0.45
1:A:672:LEU:O	1:A:675:CYS:HB2	2.17	0.45
1:A:621:ASN:HD22	1:A:621:ASN:N	2.13	0.44
1:A:635:GLU:O	1:A:636:THR:HG23	2.09	0.43
1:A:557:THR:HG22	1:A:557:THR:O	2.18	0.43
1:A:415:ARG:NH2	1:A:432:GLY:O	2.52	0.43
8:A:90:LQZ:C	8:A:90:LQZ:HAAC	2.46	0.43
8:A:90:LQZ:C	8:A:90:LQZ:CAC	2.78	0.42
1:A:577:THR:CG2	1:A:578:ARG:N	2.82	0.42

Continued on next page...

Continued from previous page...

Atom-1	Atom-2	Interatomic distance (Å)	Clash overlap (Å)
1:A:651:LEU:HD22	8:A:90:LQZ:HAJA	2.02	0.42
1:A:665:TYR:CE2	1:A:669:ILE:HD11	2.54	0.42
1:A:565:LYS:CD	1:A:567:GLU:HB2	2.49	0.42
1:A:402:ALA:HB1	1:A:407:LEU:HD12	2.01	0.42
1:A:471:MET:HE3	1:A:487:PHE:HE2	1.83	0.42
1:A:682:GLU:HG3	1:A:682:GLU:O	2.09	0.41
1:A:520:LYS:HB3	1:A:520:LYS:HE2	1.89	0.41
1:A:343:THR:HG22	1:A:606:HIS:CD2	2.52	0.41
1:A:518:ASN:OD1	1:A:520:LYS:HB2	2.20	0.41
1:A:416:LYS:HE2	1:A:620:LYS:HE3	2.02	0.41

There are no symmetry-related clashes.

5.3 Torsion angles ⓘ

5.3.1 Protein backbone ⓘ

In the following table, the Percentiles column shows the percent Ramachandran outliers of the chain as a percentile score with respect to all X-ray entries followed by that with respect to entries of similar resolution.

The Analysed column shows the number of residues for which the backbone conformation was analysed, and the total number of residues.

Mol	Chain	Analysed	Favoured	Allowed	Outliers	Percentiles
1	A	337/345 (98%)	319 (95%)	17 (5%)	1 (0%)	46 55

All (1) Ramachandran outliers are listed below:

Mol	Chain	Res	Type
1	A	683	ALA

5.3.2 Protein sidechains ⓘ

In the following table, the Percentiles column shows the percent sidechain outliers of the chain as a percentile score with respect to all X-ray entries followed by that with respect to entries of similar resolution.

The Analysed column shows the number of residues for which the sidechain conformation was analysed, and the total number of residues.

Mol	Chain	Analysed	Rotameric	Outliers	Percentiles
1	A	282/286 (99%)	278 (99%)	4 (1%)	74 86

All (4) residues with a non-rotameric sidechain are listed below:

Mol	Chain	Res	Type
1	A	342	TYR
1	A	415	ARG
1	A	515	CYS
1	A	682	GLU

Some sidechains can be flipped to improve hydrogen bonding and reduce clashes. All (3) such sidechains are listed below:

Mol	Chain	Res	Type
1	A	594	ASN
1	A	621	ASN
1	A	638	ASN

5.3.3 RNA ⓘ

There are no RNA molecules in this entry.

5.4 Non-standard residues in protein, DNA, RNA chains ⓘ

There are no non-standard protein/DNA/RNA residues in this entry.

5.5 Carbohydrates ⓘ

4 carbohydrates are modelled in this entry.

In the following table, the Counts columns list the number of bonds (or angles) for which Mogul statistics could be retrieved, the number of bonds (or angles) that are observed in the model and the number of bonds (or angles) that are defined in the chemical component dictionary. The Link column lists molecule types, if any, to which the group is linked. The Z score for a bond length (or angle) is the number of standard deviations the observed value is removed from the expected value. A bond length (or angle) with $|Z| > 2$ is considered an outlier worth inspection. RMSZ is the root-mean-square of all Z scores of the bond lengths (or angles).

Mol	Type	Chain	Res	Link	Bond lengths			Bond angles		
					Counts	RMSZ	# $ Z > 2$	Counts	RMSZ	# $ Z > 2$
3	NAG	A	3	1,3	14,14,15	0.50	0	15,19,21	0.61	0
3	NAG	A	4	3	14,14,15	1.68	3 (21%)	15,19,21	2.39	6 (40%)

Mol	Type	Chain	Res	Link	Bond lengths			Bond angles		
					Counts	RMSZ	# Z > 2	Counts	RMSZ	# Z > 2
3	NAG	A	8	1,3	14,14,15	0.65	0	15,19,21	1.82	2 (13%)
3	NAG	A	9	3	14,14,15	1.44	1 (7%)	15,19,21	1.69	3 (20%)

In the following table, the Chirals column lists the number of chiral outliers, the number of chiral centers analysed, the number of these observed in the model and the number defined in the chemical component dictionary. Similar counts are reported in the Torsion and Rings columns. '-' means no outliers of that kind were identified.

Mol	Type	Chain	Res	Link	Chirals	Torsions	Rings
3	NAG	A	3	1,3	-	0/6/23/26	0/1/1/1
3	NAG	A	4	3	-	0/6/23/26	0/1/1/1
3	NAG	A	8	1,3	-	0/6/23/26	0/1/1/1
3	NAG	A	9	3	-	0/6/23/26	0/1/1/1

All (4) bond length outliers are listed below:

Mol	Chain	Res	Type	Atoms	Z	Observed(Å)	Ideal(Å)
3	A	4	NAG	O5-C1	-4.55	1.36	1.43
3	A	9	NAG	O5-C1	-2.86	1.38	1.43
3	A	4	NAG	O7-C7	-2.25	1.18	1.23
3	A	4	NAG	C2-N2	-2.06	1.42	1.46

All (11) bond angle outliers are listed below:

Mol	Chain	Res	Type	Atoms	Z	Observed(°)	Ideal(°)
3	A	8	NAG	C2-N2-C7	-3.85	118.09	123.04
3	A	9	NAG	O3-C3-C4	-3.46	102.55	110.34
3	A	9	NAG	C3-C4-C5	-2.90	105.15	110.20
3	A	9	NAG	C3-C2-N2	-2.89	103.63	110.56
3	A	4	NAG	O3-C3-C2	-2.43	104.30	109.11
3	A	4	NAG	O7-C7-C8	-2.36	117.73	122.06
3	A	4	NAG	C3-C4-C5	-2.26	106.25	110.20
3	A	4	NAG	O4-C4-C3	2.69	116.40	110.34
3	A	8	NAG	C1-O5-C5	4.14	117.51	112.25
3	A	4	NAG	C2-N2-C7	4.25	128.50	123.04
3	A	4	NAG	C1-O5-C5	5.80	119.61	112.25

There are no chirality outliers.

There are no torsion outliers.

There are no ring outliers.

No monomer is involved in short contacts.

5.6 Ligand geometry

Of 7 ligands modelled in this entry, 3 are monoatomic - leaving 4 for Mogul analysis.

In the following table, the Counts columns list the number of bonds (or angles) for which Mogul statistics could be retrieved, the number of bonds (or angles) that are observed in the model and the number of bonds (or angles) that are defined in the chemical component dictionary. The Link column lists molecule types, if any, to which the group is linked. The Z score for a bond length (or angle) is the number of standard deviations the observed value is removed from the expected value. A bond length (or angle) with $|Z| > 2$ is considered an outlier worth inspection. RMSZ is the root-mean-square of all Z scores of the bond lengths (or angles).

Mol	Type	Chain	Res	Link	Bond lengths			Bond angles		
					Counts	RMSZ	# $ Z > 2$	Counts	RMSZ	# $ Z > 2$
2	NAG	A	2	1	14,14,15	1.18	1 (7%)	15,19,21	1.67	3 (20%)
4	SO4	A	68	-	4,4,4	0.47	0	6,6,6	0.59	0
7	CO3	A	85	6	0,3,3	0.00	-	0,3,3	0.00	-
8	LQZ	A	90	-	17,17,17	0.74	0	22,22,22	3.62	5 (22%)

In the following table, the Chirals column lists the number of chiral outliers, the number of chiral centers analysed, the number of these observed in the model and the number defined in the chemical component dictionary. Similar counts are reported in the Torsion and Rings columns. '-' means no outliers of that kind were identified.

Mol	Type	Chain	Res	Link	Chirals	Torsions	Rings
2	NAG	A	2	1	-	0/6/23/26	0/1/1/1
4	SO4	A	68	-	-	0/0/0/0	0/0/0/0
7	CO3	A	85	6	-	0/0/0/0	0/0/0/0
8	LQZ	A	90	-	-	0/12/12/12	0/1/1/1

All (1) bond length outliers are listed below:

Mol	Chain	Res	Type	Atoms	Z	Observed(Å)	Ideal(Å)
2	A	2	NAG	O5-C1	-2.58	1.39	1.43

All (8) bond angle outliers are listed below:

Mol	Chain	Res	Type	Atoms	Z	Observed(°)	Ideal(°)
8	A	90	LQZ	O-C-CA	-9.79	102.88	121.02
8	A	90	LQZ	CAC-CAN-CAP	-4.72	116.17	121.42
8	A	90	LQZ	C-CA-N	-4.37	102.18	113.20
2	A	2	NAG	C4-C3-C2	-3.41	105.93	111.23

Continued on next page...

Continued from previous page...

Mol	Chain	Res	Type	Atoms	Z	Observed(°)	Ideal(°)
2	A	2	NAG	C3-C4-C5	-3.34	104.37	110.20
2	A	2	NAG	O3-C3-C2	2.43	113.93	109.11
8	A	90	LQZ	CAP-NAL-C	3.08	130.90	123.42
8	A	90	LQZ	O-C-NAL	10.99	143.37	123.72

There are no chirality outliers.

There are no torsion outliers.

There are no ring outliers.

1 monomer is involved in 16 short contacts:

Mol	Chain	Res	Type	Clashes	Symm-Clashes
8	A	90	LQZ	16	0

5.7 Other polymers [i](#)

There are no such residues in this entry.

5.8 Polymer linkage issues [i](#)

There are no chain breaks in this entry.

6 Fit of model and data ⓘ

6.1 Protein, DNA and RNA chains ⓘ

In the following table, the column labelled ‘#RSRZ> 2’ contains the number (and percentage) of RSRZ outliers, followed by percent RSRZ outliers for the chain as percentile scores relative to all X-ray entries and entries of similar resolution. The OWAB column contains the minimum, median, 95th percentile and maximum values of the occupancy-weighted average B-factor per residue. The column labelled ‘Q< 0.9’ lists the number of (and percentage) of residues with an average occupancy less than 0.9.

Mol	Chain	Analysed	<RSRZ>	#RSRZ>2	OWAB(Å ²)	Q<0.9
1	A	341/345 (98%)	0.73	39 (11%) 7 9	19, 35, 62, 91	0

All (39) RSRZ outliers are listed below:

Mol	Chain	Res	Type	RSRZ
1	A	683	ALA	8.2
1	A	421	SER	6.7
1	A	342	TYR	6.0
1	A	418	SER	5.6
1	A	422	SER	5.5
1	A	681	LEU	4.5
1	A	366	GLY	4.4
1	A	670	ALA	4.2
1	A	419	LYS	3.9
1	A	479	GLY	3.7
1	A	676	SER	3.7
1	A	625	CYS	3.7
1	A	621	ASN	3.6
1	A	671	ASN	3.5
1	A	343	THR	3.5
1	A	635	GLU	3.4
1	A	475	VAL	3.3
1	A	420	HIS	3.2
1	A	553	ASN	3.2
1	A	482	ALA	3.2
1	A	362	SER	3.2
1	A	674	LYS	3.0
1	A	557	THR	2.9
1	A	365	SER	2.7
1	A	424	ASP	2.7
1	A	485	GLU	2.7
1	A	686	PHE	2.6

Continued on next page...

Continued from previous page...

Mol	Chain	Res	Type	RSRZ
1	A	480	SER	2.5
1	A	667	THR	2.4
1	A	613	HIS	2.4
1	A	664	GLU	2.4
1	A	561	ALA	2.3
1	A	630	CYS	2.3
1	A	682	GLU	2.3
1	A	367	GLN	2.2
1	A	360	GLN	2.2
1	A	476	ASN	2.2
1	A	423	LEU	2.1
1	A	417	SER	2.1

6.2 Non-standard residues in protein, DNA, RNA chains ⓘ

There are no non-standard protein/DNA/RNA residues in this entry.

6.3 Carbohydrates ⓘ

In the following table, the Atoms column lists the number of modelled atoms in the group and the number defined in the chemical component dictionary. LLDF column lists the quality of electron density of the group with respect to its neighbouring residues in protein, DNA or RNA chains. The B-factors column lists the minimum, median, 95th percentile and maximum values of B factors of atoms in the group. The column labelled 'Q< 0.9' lists the number of atoms with occupancy less than 0.9.

Mol	Type	Chain	Res	Atoms	RSCC	RSR	LLDF	B-factors(Å ²)	Q<0.9
3	NAG	A	8	14/15	0.86	0.17	0.79	42,46,52,53	0
3	NAG	A	3	14/15	0.81	0.30	0.78	33,35,37,41	0
3	NAG	A	9	14/15	0.82	0.25	0.03	40,48,49,49	0
3	NAG	A	4	14/15	0.78	0.38	-	44,46,49,52	0

6.4 Ligands ⓘ

In the following table, the Atoms column lists the number of modelled atoms in the group and the number defined in the chemical component dictionary. LLDF column lists the quality of electron density of the group with respect to its neighbouring residues in protein, DNA or RNA chains. The B-factors column lists the minimum, median, 95th percentile and maximum values of B factors of atoms in the group. The column labelled 'Q< 0.9' lists the number of atoms with occupancy less than 0.9.

Mol	Type	Chain	Res	Atoms	RSCC	RSR	LLDF	B-factors(\AA^2)	Q<0.9
8	LQZ	A	90	17/17	0.64	0.66	12.77	40,44,45,45	17
2	NAG	A	2	14/15	0.84	0.40	2.02	45,49,51,51	0
5	ZN	A	81	1/1	0.99	0.12	-0.83	36,36,36,36	0
7	CO3	A	85	4/4	0.98	0.11	-1.33	18,19,19,22	0
6	FE	A	84	1/1	1.00	0.05	-7.09	18,18,18,18	0
4	SO4	A	68	5/5	0.98	0.08	-	47,47,48,48	0
5	ZN	A	82	1/1	0.99	0.09	-	42,42,42,42	0

6.5 Other polymers [i](#)

There are no such residues in this entry.