



# Full wwPDB X-ray Structure Validation Report ⓘ

Feb 12, 2017 – 10:23 PM EST

PDB ID : 5TUY  
Title : Structure of human G9a SET-domain (EHMT2) in complex with inhibitor MS0124  
Authors : Babault, N.; Xiong, Y.; Liu, J.; Jin, J.  
Deposited on : 2016-11-07  
Resolution : 2.60 Å(reported)

This is a Full wwPDB X-ray Structure Validation Report for a publicly released PDB entry.

We welcome your comments at [validation@mail.wwpdb.org](mailto:validation@mail.wwpdb.org)

A user guide is available at

<http://wwpdb.org/validation/2016/XrayValidationReportHelp>

with specific help available everywhere you see the ⓘ symbol.

---

The following versions of software and data (see [references ⓘ](#)) were used in the production of this report:

MolProbity : 4.02b-467  
Mogul : 1.7.1 (RC1), CSD as537be (2016)  
Xtriage (Phenix) : 1.9-1692  
EDS : rb-20028442  
Percentile statistics : 20151230.v01 (using entries in the PDB archive December 30th 2015)  
Refmac : 5.8.0135  
CCP4 : 6.5.0  
Ideal geometry (proteins) : Engh & Huber (2001)  
Ideal geometry (DNA, RNA) : Parkinson et al. (1996)  
Validation Pipeline (wwPDB-VP) : rb-20028442

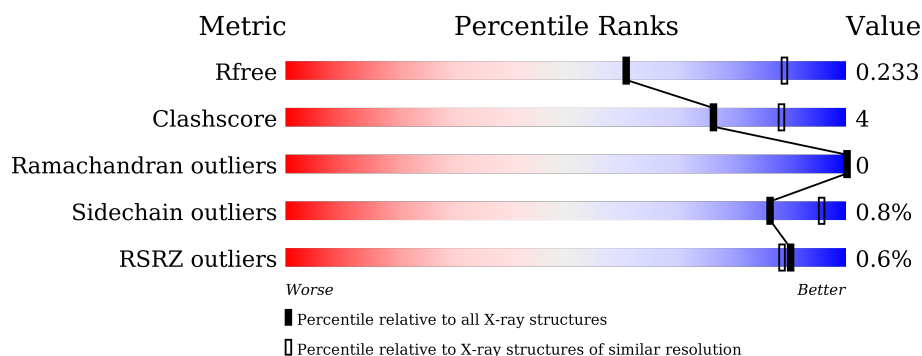
# 1 Overall quality at a glance

The following experimental techniques were used to determine the structure:

*X-RAY DIFFRACTION*

The reported resolution of this entry is 2.60 Å.

Percentile scores (ranging between 0-100) for global validation metrics of the entry are shown in the following graphic. The table shows the number of entries on which the scores are based.



Metric	Whole archive (#Entries)	Similar resolution (#Entries, resolution range(Å))
$R_{free}$	91344	2328 (2.60-2.60)
Clashscore	102246	2679 (2.60-2.60)
Ramachandran outliers	100387	2635 (2.60-2.60)
Sidechain outliers	100360	2635 (2.60-2.60)
RSRZ outliers	91569	2334 (2.60-2.60)

The table below summarises the geometric issues observed across the polymeric chains and their fit to the electron density. The red, orange, yellow and green segments on the lower bar indicate the fraction of residues that contain outliers for  $\geq 3$ , 2, 1 and 0 types of geometric quality criteria. A grey segment represents the fraction of residues that are not modelled. The numeric value for each fraction is indicated below the corresponding segment, with a dot representing fractions  $\leq 5\%$ . The upper red bar (where present) indicates the fraction of residues that have poor fit to the electron density. The numeric value is given above the bar.

Mol	Chain	Length	Quality of chain
1	A	268	<div> <div style="width: 100%; height: 10px; background: linear-gradient(to right, red 1%, orange 1%, yellow 12%, green 88%);"></div> <div style="display: flex; justify-content: space-between; width: 100%;"> <span>%</span> <span>88%</span> <span>12%</span> </div> </div>
1	B	268	<div> <div style="width: 100%; height: 10px; background: linear-gradient(to right, green 91%, yellow 6%, grey 3%);"></div> <div style="display: flex; justify-content: space-between; width: 100%;"> <span></span> <span>91%</span> <span>6% ..</span> </div> </div>

## 2 Entry composition

There are 5 unique types of molecules in this entry. The entry contains 4484 atoms, of which 0 are hydrogens and 0 are deuteriums.

In the tables below, the ZeroOcc column contains the number of atoms modelled with zero occupancy, the AltConf column contains the number of residues with at least one atom in alternate conformation and the Trace column contains the number of residues modelled with at most 2 atoms.

- Molecule 1 is a protein called Histone-lysine N-methyltransferase EHMT2.

Mol	Chain	Residues	Atoms					ZeroOcc	AltConf	Trace
1	A	267	Total	C	N	O	S	0	1	0
			2150	1342	374	411	23			
1	B	263	Total	C	N	O	S	0	0	0
			2115	1320	369	403	23			

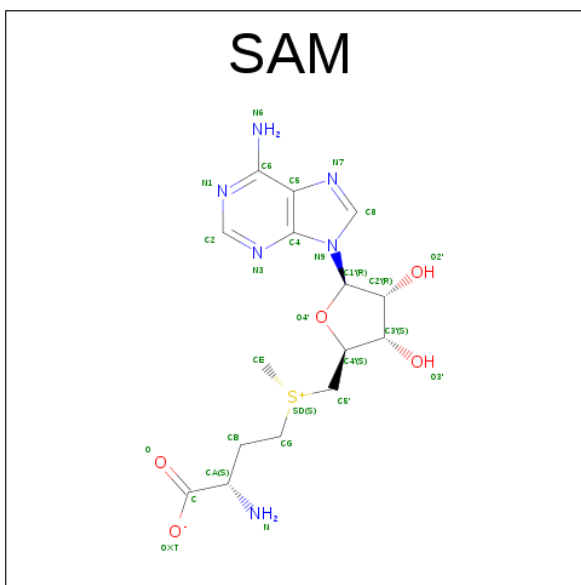
There are 2 discrepancies between the modelled and reference sequences:

Chain	Residue	Modelled	Actual	Comment	Reference
A	1188	LYS	ARG	conflict	UNP Q96KQ7
B	1188	LYS	ARG	conflict	UNP Q96KQ7

- Molecule 2 is ZINC ION (three-letter code: ZN) (formula: Zn).

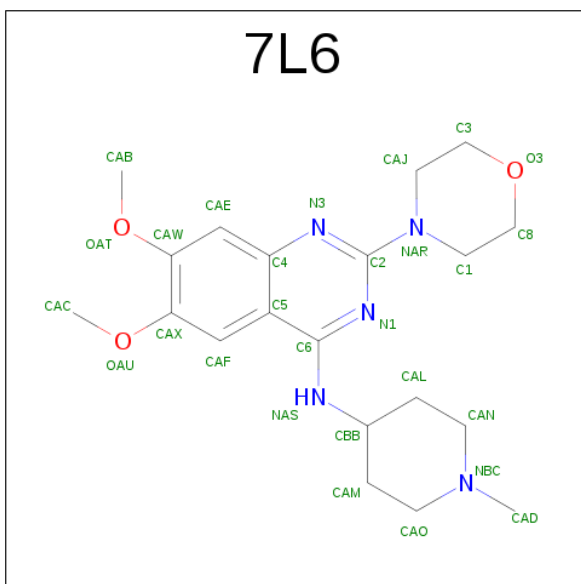
Mol	Chain	Residues	Atoms		ZeroOcc	AltConf
2	B	4	Total	Zn	0	0
			4	4		
2	A	4	Total	Zn	0	0
			4	4		

- Molecule 3 is S-ADENOSYLMETHIONINE (three-letter code: SAM) (formula: C<sub>15</sub>H<sub>22</sub>N<sub>6</sub>O<sub>5</sub>S).



Mol	Chain	Residues	Atoms					ZeroOcc	AltConf
3	A	1	Total	C	N	O	S	0	0
			27	15	6	5	1		
3	B	1	Total	C	N	O	S	0	0
			27	15	6	5	1		

- Molecule 4 is 6,7-dimethoxy-N-(1-methylpiperidin-4-yl)-2-(morpholin-4-yl)quinazolin-4-amine (three-letter code: 7L6) (formula: C<sub>20</sub>H<sub>29</sub>N<sub>5</sub>O<sub>3</sub>).



Mol	Chain	Residues	Atoms				ZeroOcc	AltConf
4	A	1	Total	C	N	O	0	0
			28	20	5	3		

*Continued on next page...*

*Continued from previous page...*

Mol	Chain	Residues	Atoms				ZeroOcc	AltConf
4	B	1	Total	C	N	O	0	0
			28	20	5	3		

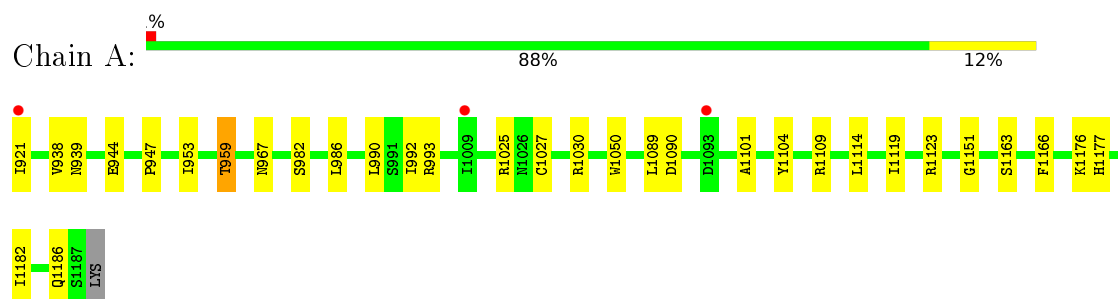
- Molecule 5 is water.

Mol	Chain	Residues	Atoms		ZeroOcc	AltConf
5	A	51	Total	O	0	0
			51	51		
5	B	50	Total	O	0	0
			50	50		

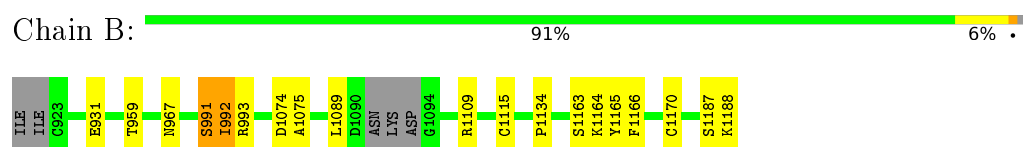
### 3 Residue-property plots

These plots are drawn for all protein, RNA and DNA chains in the entry. The first graphic for a chain summarises the proportions of errors displayed in the second graphic. The second graphic shows the sequence view annotated by issues in geometry and electron density. Residues are color-coded according to the number of geometric quality criteria for which they contain at least one outlier: green = 0, yellow = 1, orange = 2 and red = 3 or more. A red dot above a residue indicates a poor fit to the electron density ( $RSRZ > 2$ ). Stretches of 2 or more consecutive residues without any outlier are shown as a green connector. Residues present in the sample, but not in the model, are shown in grey.

- Molecule 1: Histone-lysine N-methyltransferase EHMT2



- Molecule 1: Histone-lysine N-methyltransferase EHMT2



## 4 Data and refinement statistics

Property	Value	Source
Space group	P 1 21 1	Depositor
Cell constants a, b, c, $\alpha$ , $\beta$ , $\gamma$	56.97Å 82.30Å 73.74Å 90.00° 89.97° 90.00°	Depositor
Resolution (Å)	56.97 – 2.60 56.97 – 2.60	Depositor EDS
% Data completeness (in resolution range)	99.9 (56.97-2.60) 100.0 (56.97-2.60)	Depositor EDS
$R_{merge}$	(Not available)	Depositor
$R_{sym}$	(Not available)	Depositor
$\langle I/\sigma(I) \rangle$ <sup>1</sup>	2.12 (at 2.61Å)	Xtriage
Refinement program	PHENIX	Depositor
R, $R_{free}$	0.171 , 0.234 0.170 , 0.233	Depositor DCC
$R_{free}$ test set	1124 reflections (5.34%)	DCC
Wilson B-factor (Å <sup>2</sup> )	28.2	Xtriage
Anisotropy	0.426	Xtriage
Bulk solvent $k_{sol}$ (e/Å <sup>3</sup> ), $B_{sol}$ (Å <sup>2</sup> )	0.29 , 31.0	EDS
L-test for twinning <sup>2</sup>	$\langle  L  \rangle = 0.49$ , $\langle L^2 \rangle = 0.32$	Xtriage
Estimated twinning fraction	0.036 for h,-k,-l	Xtriage
$F_o, F_c$ correlation	0.94	EDS
Total number of atoms	4484	wwPDB-VP
Average B, all atoms (Å <sup>2</sup> )	34.0	wwPDB-VP

Xtriage's analysis on translational NCS is as follows: *The analyses of the Patterson function reveals a significant off-origin peak that is 24.52 % of the origin peak, indicating pseudo translational symmetry. The chance of finding a peak of this or larger height randomly in a structure without pseudo translational symmetry is equal to 3.7744e-03. The detected translational NCS is most likely also responsible for the elevated intensity ratio.*

<sup>1</sup> Intensities estimated from amplitudes.

<sup>2</sup> Theoretical values of  $\langle |L| \rangle$ ,  $\langle L^2 \rangle$  for acentric reflections are 0.5, 0.333 respectively for untwinned datasets, and 0.375, 0.2 for perfectly twinned datasets.

## 5 Model quality [i](#)

### 5.1 Standard geometry [i](#)

Bond lengths and bond angles in the following residue types are not validated in this section: ZN, 7L6, SAM

The Z score for a bond length (or angle) is the number of standard deviations the observed value is removed from the expected value. A bond length (or angle) with  $|Z| > 5$  is considered an outlier worth inspection. RMSZ is the root-mean-square of all Z scores of the bond lengths (or angles).

Mol	Chain	Bond lengths		Bond angles	
		RMSZ	$\# Z  > 5$	RMSZ	$\# Z  > 5$
1	A	0.47	0/2199	0.62	0/2973
1	B	0.45	0/2160	0.60	1/2918 (0.0%)
All	All	0.46	0/4359	0.61	1/5891 (0.0%)

There are no bond length outliers.

All (1) bond angle outliers are listed below:

Mol	Chain	Res	Type	Atoms	Z	Observed(°)	Ideal(°)
1	B	992	ILE	CG1-CB-CG2	-5.41	99.51	111.40

There are no chirality outliers.

There are no planarity outliers.

### 5.2 Too-close contacts [i](#)

In the following table, the Non-H and H(model) columns list the number of non-hydrogen atoms and hydrogen atoms in the chain respectively. The H(added) column lists the number of hydrogen atoms added and optimized by MolProbity. The Clashes column lists the number of clashes within the asymmetric unit, whereas Symm-Clashes lists symmetry related clashes.

Mol	Chain	Non-H	H(model)	H(added)	Clashes	Symm-Clashes
1	A	2150	0	2041	20	0
1	B	2115	0	2003	14	0
2	A	4	0	0	0	0
2	B	4	0	0	0	0
3	A	27	0	22	1	0
3	B	27	0	22	1	0
4	A	28	0	0	0	0
4	B	28	0	0	0	0

*Continued on next page...*



*Continued from previous page...*

Mol	Chain	Non-H	H(model)	H(added)	Clashes	Symm-Clashes
5	A	51	0	0	0	0
5	B	50	0	0	2	0
All	All	4484	0	4088	32	0

The all-atom clashscore is defined as the number of clashes found per 1000 atoms (including hydrogen atoms). The all-atom clashscore for this structure is 4.

All (32) close contacts within the same asymmetric unit are listed below, sorted by their clash magnitude.

Atom-1	Atom-2	Interatomic distance (Å)	Clash overlap (Å)
1:B:991:SER:O	1:B:992:ILE:HG22	1.89	0.71
1:B:1089:LEU:HD22	1:B:1134:PRO:HG2	1.73	0.70
1:A:1090:ASP:OD1	1:A:1123:ARG:NH1	2.29	0.65
1:B:931:GLU:OE2	5:B:1602:HOH:O	2.16	0.61
1:A:967:ASN:ND2	1:B:959:THR:O	2.34	0.60
1:B:1115:CYS:HB2	1:B:1170:CYS:SG	2.40	0.60
1:B:991:SER:OG	5:B:1601:HOH:O	2.03	0.56
1:A:959:THR:O	1:B:967:ASN:ND2	2.41	0.53
1:A:921:ILE:HA	1:A:938:VAL:HG12	1.91	0.53
1:A:1101:ALA:HA	1:A:1104:TYR:O	2.10	0.52
1:A:1027:CYS:HB3	1:A:1030:ARG:HE	1.77	0.49
1:A:1163:SER:HA	1:A:1166:PHE:O	2.12	0.49
1:A:992:ILE:HG22	1:A:993:ARG:HG2	1.94	0.49
1:B:1187:SER:HB2	1:B:1188:LYS:HE2	1.94	0.49
1:A:986:LEU:O	1:A:990:LEU:HG	2.14	0.48
1:A:947:PRO:HD3	1:A:1050:TRP:CE2	2.49	0.47
1:B:992:ILE:HG23	1:B:993:ARG:HG2	1.97	0.47
1:B:1163:SER:HA	1:B:1166:PHE:O	2.18	0.44
1:A:1119:ILE:HG12	1:A:1151:GLY:O	2.18	0.44
1:B:993:ARG:HB2	1:B:993:ARG:HE	1.56	0.44
1:A:1186:GLN:OE1	1:A:1186:GLN:N	2.43	0.44
1:A:1114:LEU:HD23	1:A:1114:LEU:HA	1.78	0.44
1:A:1176:LYS:HG3	1:A:1177:HIS:CD2	2.53	0.43
1:A:992:ILE:HD13	1:A:992:ILE:HA	1.89	0.43
1:A:1109:ARG:O	3:A:1505:SAM:HE1	2.19	0.43
1:A:953:ILE:HD13	1:A:1104:TYR:HB3	2.00	0.43
1:B:1109:ARG:O	3:B:1505:SAM:HE1	2.19	0.43
1:A:1182:ILE:O	1:A:1186:GLN:OE1	2.38	0.42
1:B:1164:LYS:HE3	1:B:1165:TYR:CE2	2.55	0.41
1:B:1074:ASP:OD1	1:B:1075:ALA:N	2.53	0.41
1:A:939:ASN:ND2	1:A:944:GLU:O	2.50	0.41

*Continued on next page...*

*Continued from previous page...*

Atom-1	Atom-2	Interatomic distance (Å)	Clash overlap (Å)
1:A:1025:ARG:O	1:A:1030:ARG:HD2	2.20	0.41

There are no symmetry-related clashes.

## 5.3 Torsion angles [i](#)

### 5.3.1 Protein backbone [i](#)

In the following table, the Percentiles column shows the percent Ramachandran outliers of the chain as a percentile score with respect to all X-ray entries followed by that with respect to entries of similar resolution.

The Analysed column shows the number of residues for which the backbone conformation was analysed, and the total number of residues.

Mol	Chain	Analysed	Favoured	Allowed	Outliers	Percentiles	
1	A	266/268 (99%)	257 (97%)	9 (3%)	0	100	100
1	B	259/268 (97%)	251 (97%)	8 (3%)	0	100	100
All	All	525/536 (98%)	508 (97%)	17 (3%)	0	100	100

There are no Ramachandran outliers to report.

### 5.3.2 Protein sidechains [i](#)

In the following table, the Percentiles column shows the percent sidechain outliers of the chain as a percentile score with respect to all X-ray entries followed by that with respect to entries of similar resolution.

The Analysed column shows the number of residues for which the sidechain conformation was analysed, and the total number of residues.

Mol	Chain	Analysed	Rotameric	Outliers	Percentiles	
1	A	241/241 (100%)	238 (99%)	3 (1%)	78	92
1	B	236/241 (98%)	235 (100%)	1 (0%)	93	98
All	All	477/482 (99%)	473 (99%)	4 (1%)	86	95

All (4) residues with a non-rotameric sidechain are listed below:

Mol	Chain	Res	Type
1	A	959	THR
1	A	982	SER
1	A	1089	LEU
1	B	991	SER

Some sidechains can be flipped to improve hydrogen bonding and reduce clashes. There are no such sidechains identified.

### 5.3.3 RNA ⓘ

There are no RNA molecules in this entry.

## 5.4 Non-standard residues in protein, DNA, RNA chains ⓘ

There are no non-standard protein/DNA/RNA residues in this entry.

## 5.5 Carbohydrates ⓘ

There are no carbohydrates in this entry.

## 5.6 Ligand geometry ⓘ

Of 12 ligands modelled in this entry, 8 are monoatomic - leaving 4 for Mogul analysis.

In the following table, the Counts columns list the number of bonds (or angles) for which Mogul statistics could be retrieved, the number of bonds (or angles) that are observed in the model and the number of bonds (or angles) that are defined in the chemical component dictionary. The Link column lists molecule types, if any, to which the group is linked. The Z score for a bond length (or angle) is the number of standard deviations the observed value is removed from the expected value. A bond length (or angle) with  $|Z| > 2$  is considered an outlier worth inspection. RMSZ is the root-mean-square of all Z scores of the bond lengths (or angles).

Mol	Type	Chain	Res	Link	Bond lengths			Bond angles		
					Counts	RMSZ	$\# Z  > 2$	Counts	RMSZ	$\# Z  > 2$
3	SAM	A	1505	-	23,29,29	1.53	2 (8%)	15,42,42	2.19	1 (6%)
4	7L6	A	1506	-	29,31,31	1.31	4 (13%)	42,43,43	2.64	17 (40%)
3	SAM	B	1505	-	23,29,29	1.51	1 (4%)	15,42,42	2.53	1 (6%)
4	7L6	B	1506	-	29,31,31	1.48	6 (20%)	42,43,43	2.28	15 (35%)

In the following table, the Chirals column lists the number of chiral outliers, the number of chiral

centers analysed, the number of these observed in the model and the number defined in the chemical component dictionary. Similar counts are reported in the Torsion and Rings columns. '-' means no outliers of that kind were identified.

Mol	Type	Chain	Res	Link	Chirals	Torsions	Rings
3	SAM	A	1505	-	-	0/8/33/33	0/3/3/3
4	7L6	A	1506	-	-	0/12/30/30	0/4/4/4
3	SAM	B	1505	-	-	0/8/33/33	0/3/3/3
4	7L6	B	1506	-	-	0/12/30/30	0/4/4/4

All (13) bond length outliers are listed below:

Mol	Chain	Res	Type	Atoms	Z	Observed(Å)	Ideal(Å)
3	B	1505	SAM	CG-SD	-6.18	1.67	1.80
3	A	1505	SAM	CG-SD	-6.18	1.67	1.80
4	B	1506	7L6	C6-C5	-5.27	1.38	1.44
4	A	1506	7L6	C6-C5	-3.88	1.40	1.44
4	B	1506	7L6	C5-C4	-2.31	1.39	1.42
4	B	1506	7L6	CAE-CAW	2.10	1.40	1.36
3	A	1505	SAM	O4'-C1'	2.11	1.44	1.41
4	B	1506	7L6	CAF-CAX	2.11	1.40	1.36
4	A	1506	7L6	CAE-CAW	2.14	1.40	1.36
4	A	1506	7L6	CAF-CAX	2.23	1.40	1.36
4	B	1506	7L6	C6-N1	2.23	1.36	1.33
4	B	1506	7L6	C2-NAR	3.01	1.41	1.35
4	A	1506	7L6	C2-NAR	3.26	1.41	1.35

All (34) bond angle outliers are listed below:

Mol	Chain	Res	Type	Atoms	Z	Observed(°)	Ideal(°)
3	B	1505	SAM	N3-C2-N1	-9.27	121.59	128.87
3	A	1505	SAM	N3-C2-N1	-7.80	122.75	128.87
4	B	1506	7L6	CAF-C5-C6	-6.44	121.23	124.87
4	A	1506	7L6	CAF-C5-C6	-6.44	121.23	124.87
4	A	1506	7L6	C5-C4-N3	-5.25	118.07	122.89
4	B	1506	7L6	N3-C2-N1	-3.85	119.81	126.36
4	A	1506	7L6	C3-CAJ-NAR	-3.73	103.18	109.94
4	B	1506	7L6	OAT-CAW-CAE	-3.72	120.52	125.26
4	A	1506	7L6	C8-C1-NAR	-3.68	103.25	109.94
4	B	1506	7L6	OAU-CAX-CAF	-3.46	120.85	125.26
4	A	1506	7L6	N3-C2-N1	-3.46	120.49	126.36
4	B	1506	7L6	C5-C4-N3	-3.40	119.76	122.89
4	B	1506	7L6	C6-NAS-CBB	-2.71	119.76	124.34
4	A	1506	7L6	OAU-CAX-CAF	-2.46	122.13	125.26

*Continued on next page...*

*Continued from previous page...*

Mol	Chain	Res	Type	Atoms	Z	Observed(°)	Ideal(°)
4	B	1506	7L6	C8-C1-NAR	-2.35	105.67	109.94
4	A	1506	7L6	CAN-CAL-CBB	-2.29	106.77	110.29
4	A	1506	7L6	C2-N1-C6	2.06	119.60	115.67
4	A	1506	7L6	C2-N3-C4	2.24	121.96	115.97
4	B	1506	7L6	N1-C2-NAR	2.32	119.70	117.11
4	A	1506	7L6	CAC-OAU-CAX	2.40	121.02	117.53
4	B	1506	7L6	C2-N1-C6	2.46	120.36	115.67
4	A	1506	7L6	CAJ-NAR-C1	2.67	117.06	111.54
4	A	1506	7L6	CAB-OAT-CAW	2.74	121.53	117.53
4	A	1506	7L6	CAO-NBC-CAN	2.75	113.23	109.50
4	B	1506	7L6	OAU-CAX-CAW	2.89	119.31	115.41
4	B	1506	7L6	N3-C2-NAR	2.99	120.48	117.11
4	A	1506	7L6	N1-C2-NAR	3.19	120.68	117.11
4	B	1506	7L6	CAB-OAT-CAW	3.31	122.36	117.53
4	B	1506	7L6	OAT-CAW-CAX	3.34	119.91	115.41
4	B	1506	7L6	CAJ-NAR-C1	3.76	119.33	111.54
4	B	1506	7L6	C6-C5-C4	4.19	118.24	115.83
4	A	1506	7L6	CAM-CBB-NAS	4.67	118.08	110.53
4	A	1506	7L6	C6-NAS-CBB	5.12	132.98	124.34
4	A	1506	7L6	C6-C5-C4	6.61	119.62	115.83

There are no chirality outliers.

There are no torsion outliers.

There are no ring outliers.

2 monomers are involved in 2 short contacts:

Mol	Chain	Res	Type	Clashes	Symm-Clashes
3	A	1505	SAM	1	0
3	B	1505	SAM	1	0

## 5.7 Other polymers [i](#)

There are no such residues in this entry.

## 5.8 Polymer linkage issues [i](#)

There are no chain breaks in this entry.

## 6 Fit of model and data [i](#)

### 6.1 Protein, DNA and RNA chains [i](#)

In the following table, the column labelled ‘#RSRZ> 2’ contains the number (and percentage) of RSRZ outliers, followed by percent RSRZ outliers for the chain as percentile scores relative to all X-ray entries and entries of similar resolution. The OWAB column contains the minimum, median, 95<sup>th</sup> percentile and maximum values of the occupancy-weighted average B-factor per residue. The column labelled ‘Q< 0.9’ lists the number of (and percentage) of residues with an average occupancy less than 0.9.

Mol	Chain	Analysed	<RSRZ>	#RSRZ>2	OWAB(Å <sup>2</sup> )	Q<0.9
1	A	267/268 (99%)	-0.64	3 (1%) 82 79	14, 29, 63, 101	0
1	B	263/268 (98%)	-0.65	0 100 100	18, 33, 58, 77	0
All	All	530/536 (98%)	-0.64	3 (0%) 90 88	14, 32, 62, 101	0

All (3) RSRZ outliers are listed below:

Mol	Chain	Res	Type	RSRZ
1	A	921	ILE	4.7
1	A	1093	ASP	2.6
1	A	1009	ILE	2.4

### 6.2 Non-standard residues in protein, DNA, RNA chains [i](#)

There are no non-standard protein/DNA/RNA residues in this entry.

### 6.3 Carbohydrates [i](#)

There are no carbohydrates in this entry.

### 6.4 Ligands [i](#)

In the following table, the Atoms column lists the number of modelled atoms in the group and the number defined in the chemical component dictionary. LLDF column lists the quality of electron density of the group with respect to its neighbouring residues in protein, DNA or RNA chains. The B-factors column lists the minimum, median, 95<sup>th</sup> percentile and maximum values of B factors of atoms in the group. The column labelled ‘Q< 0.9’ lists the number of atoms with occupancy less than 0.9.

Mol	Type	Chain	Res	Atoms	RSCC	RSR	LLDF	B-factors( $\text{\AA}^2$ )	Q<0.9
2	ZN	A	1504	1/1	1.00	0.11	0.52	27,27,27,27	0
2	ZN	B	1503	1/1	0.99	0.11	0.40	30,30,30,30	0
4	7L6	B	1506	28/28	0.96	0.14	0.30	25,42,54,55	0
2	ZN	B	1501	1/1	0.99	0.12	0.08	27,27,27,27	0
3	SAM	A	1505	27/27	0.98	0.11	-0.10	15,22,26,34	0
2	ZN	A	1502	1/1	0.99	0.11	-0.22	38,38,38,38	0
4	7L6	A	1506	28/28	0.97	0.12	-0.24	19,25,33,36	0
2	ZN	A	1501	1/1	0.98	0.11	-0.28	45,45,45,45	0
2	ZN	B	1504	1/1	1.00	0.10	-0.82	36,36,36,36	0
2	ZN	A	1503	1/1	0.99	0.09	-1.24	36,36,36,36	0
2	ZN	B	1502	1/1	1.00	0.09	-1.29	25,25,25,25	0
3	SAM	B	1505	27/27	0.98	0.10	-1.62	24,29,34,37	0

## 6.5 Other polymers [i](#)

There are no such residues in this entry.