



# Full wwPDB X-ray Structure Validation Report ⓘ

Jan 31, 2016 – 10:30 PM GMT

PDB ID : 1TX0  
Title : Dihydropteroate Synthetase, With Bound Product Analogue Pterioic Acid,  
From Bacillus anthracis  
Authors : Babaoglu, K.; Qi, J.; Lee, R.E.; White, S.W.  
Deposited on : 2004-07-01  
Resolution : 2.15 Å(reported)

This is a Full wwPDB X-ray Structure Validation Report for a publicly released PDB entry.  
We welcome your comments at [validation@mail.wwpdb.org](mailto:validation@mail.wwpdb.org)  
A user guide is available at  
<http://wwpdb.org/validation/2016/XrayValidationReportHelp>  
with specific help available everywhere you see the ⓘ symbol.

---

The following versions of software and data (see [references ⓘ](#)) were used in the production of this report:

MolProbity : 4.02b-467  
Mogul : 1.7 (RC4), CSD as536be (2015)  
Xtriage (Phenix) : 1.9-1692  
EDS : rb-20026688  
Percentile statistics : 20151230.v01 (using entries in the PDB archive December 30th 2015)  
Refmac : 5.8.0135  
CCP4 : 6.5.0  
Ideal geometry (proteins) : Engh & Huber (2001)  
Ideal geometry (DNA, RNA) : Parkinson et al. (1996)  
Validation Pipeline (wwPDB-VP) : trunk26865

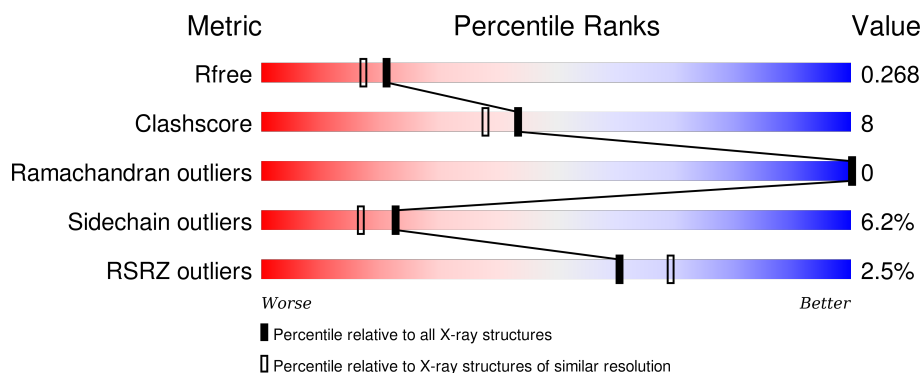
# 1 Overall quality at a glance

The following experimental techniques were used to determine the structure:

## *X-RAY DIFFRACTION*

The reported resolution of this entry is 2.15 Å.

Percentile scores (ranging between 0-100) for global validation metrics of the entry are shown in the following graphic. The table shows the number of entries on which the scores are based.



Metric	Whole archive (#Entries)	Similar resolution (#Entries, resolution range(Å))
$R_{free}$	91344	1045 (2.16-2.16)
Clashscore	102246	1152 (2.16-2.16)
Ramachandran outliers	100387	1131 (2.16-2.16)
Sidechain outliers	100360	1131 (2.16-2.16)
RSRZ outliers	91569	1050 (2.16-2.16)

The table below summarises the geometric issues observed across the polymeric chains and their fit to the electron density. The red, orange, yellow and green segments on the lower bar indicate the fraction of residues that contain outliers for  $\geq 3$ , 2, 1 and 0 types of geometric quality criteria. A grey segment represents the fraction of residues that are not modelled. The numeric value for each fraction is indicated below the corresponding segment, with a dot representing fractions  $\leq 5\%$ . The upper red bar (where present) indicates the fraction of residues that have poor fit to the electron density. The numeric value is given above the bar.

Mol	Chain	Length	Quality of chain
1	A	297	<div> <div>2%</div> <div> <div></div> <div>66%</div> <div>22%</div> <div>•</div> <div>11%</div> </div> </div>
1	B	297	<div> <div>3%</div> <div> <div></div> <div>67%</div> <div>20%</div> <div>•</div> <div>12%</div> </div> </div>

## 2 Entry composition

There are 4 unique types of molecules in this entry. The entry contains 4338 atoms, of which 0 are hydrogens and 0 are deuteriums.

In the tables below, the ZeroOcc column contains the number of atoms modelled with zero occupancy, the AltConf column contains the number of residues with at least one atom in alternate conformation and the Trace column contains the number of residues modelled with at most 2 atoms.

- Molecule 1 is a protein called DHPS, Dihydropteroate synthase.

Mol	Chain	Residues	Atoms					ZeroOcc	AltConf	Trace
1	A	265	Total	C	N	O	S	0	0	0
			2056	1293	353	394	16			
1	B	261	Total	C	N	O	S	0	0	0
			2022	1271	348	387	16			

There are 40 discrepancies between the modelled and reference sequences:

Chain	Residue	Modelled	Actual	Comment	Reference
A	-19	MET	-	EXPRESSION TAG	UNP Q81VW8
A	-18	GLY	-	EXPRESSION TAG	UNP Q81VW8
A	-17	SER	-	EXPRESSION TAG	UNP Q81VW8
A	-16	SER	-	EXPRESSION TAG	UNP Q81VW8
A	-15	HIS	-	EXPRESSION TAG	UNP Q81VW8
A	-14	HIS	-	EXPRESSION TAG	UNP Q81VW8
A	-13	HIS	-	EXPRESSION TAG	UNP Q81VW8
A	-12	HIS	-	EXPRESSION TAG	UNP Q81VW8
A	-11	HIS	-	EXPRESSION TAG	UNP Q81VW8
A	-10	HIS	-	EXPRESSION TAG	UNP Q81VW8
A	-9	SER	-	EXPRESSION TAG	UNP Q81VW8
A	-8	SER	-	EXPRESSION TAG	UNP Q81VW8
A	-7	GLY	-	EXPRESSION TAG	UNP Q81VW8
A	-6	LEU	-	EXPRESSION TAG	UNP Q81VW8
A	-5	VAL	-	EXPRESSION TAG	UNP Q81VW8
A	-4	PRO	-	EXPRESSION TAG	UNP Q81VW8
A	-3	ARG	-	EXPRESSION TAG	UNP Q81VW8
A	-2	GLY	-	EXPRESSION TAG	UNP Q81VW8
A	-1	SER	-	EXPRESSION TAG	UNP Q81VW8
A	0	HIS	-	EXPRESSION TAG	UNP Q81VW8
B	-19	MET	-	EXPRESSION TAG	UNP Q81VW8
B	-18	GLY	-	EXPRESSION TAG	UNP Q81VW8
B	-17	SER	-	EXPRESSION TAG	UNP Q81VW8
B	-16	SER	-	EXPRESSION TAG	UNP Q81VW8
B	-15	HIS	-	EXPRESSION TAG	UNP Q81VW8

*Continued on next page...*

Continued from previous page...

Chain	Residue	Modelled	Actual	Comment	Reference
B	-14	HIS	-	EXPRESSION TAG	UNP Q81VW8
B	-13	HIS	-	EXPRESSION TAG	UNP Q81VW8
B	-12	HIS	-	EXPRESSION TAG	UNP Q81VW8
B	-11	HIS	-	EXPRESSION TAG	UNP Q81VW8
B	-10	HIS	-	EXPRESSION TAG	UNP Q81VW8
B	-9	SER	-	EXPRESSION TAG	UNP Q81VW8
B	-8	SER	-	EXPRESSION TAG	UNP Q81VW8
B	-7	GLY	-	EXPRESSION TAG	UNP Q81VW8
B	-6	LEU	-	EXPRESSION TAG	UNP Q81VW8
B	-5	VAL	-	EXPRESSION TAG	UNP Q81VW8
B	-4	PRO	-	EXPRESSION TAG	UNP Q81VW8
B	-3	ARG	-	EXPRESSION TAG	UNP Q81VW8
B	-2	GLY	-	EXPRESSION TAG	UNP Q81VW8
B	-1	SER	-	EXPRESSION TAG	UNP Q81VW8
B	0	HIS	-	EXPRESSION TAG	UNP Q81VW8

- Molecule 2 is SULFATE ION (three-letter code: SO4) (formula: O<sub>4</sub>S).



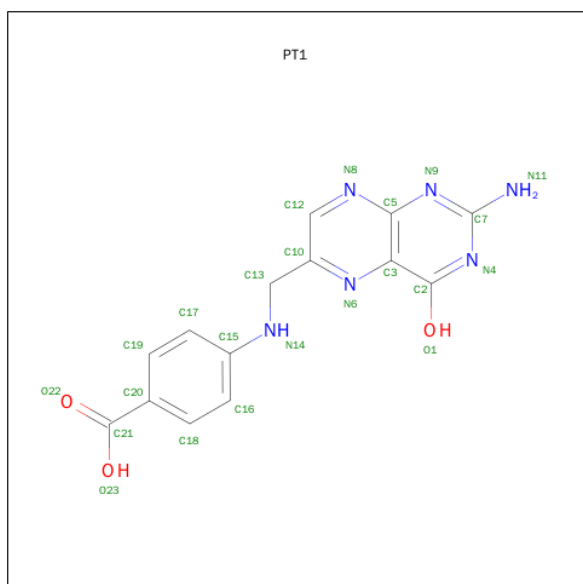
Mol	Chain	Residues	Atoms			ZeroOcc	AltConf
2	A	1	Total	O	S	0	0
			5	4	1		
2	B	1	Total	O	S	0	0
			5	4	1		
2	B	1	Total	O	S	0	0
			5	4	1		
2	A	1	Total	O	S	0	0
			5	4	1		

Continued on next page...

Continued from previous page...

Mol	Chain	Residues	Atoms			ZeroOcc	AltConf
2	A	1	Total	O	S	0	0
			5	4	1		
2	B	1	Total	O	S	0	0
			5	4	1		
2	B	1	Total	O	S	0	0
			5	4	1		
2	A	1	Total	O	S	0	0
			5	4	1		
2	A	1	Total	O	S	0	0
			5	4	1		
2	B	1	Total	O	S	0	0
			5	4	1		

- Molecule 3 is PTEROIC ACID (three-letter code: PT1) (formula: C<sub>14</sub>H<sub>12</sub>N<sub>6</sub>O<sub>3</sub>).



Mol	Chain	Residues	Atoms				ZeroOcc	AltConf
3	B	1	Total	C	N	O	0	0
			23	14	6	3		
3	A	1	Total	C	N	O	0	0
			23	14	6	3		

- Molecule 4 is water.

Mol	Chain	Residues	Atoms		ZeroOcc	AltConf
4	A	88	Total	O	0	0
			88	88		

Continued on next page...

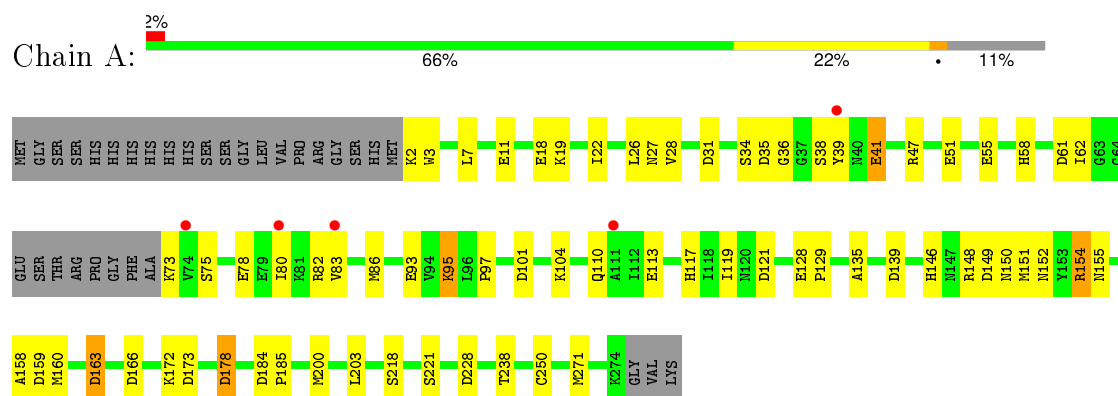
*Continued from previous page...*

Mol	Chain	Residues	Atoms		ZeroOcc	AltConf
4	B	76	Total	O	0	0
			76	76		

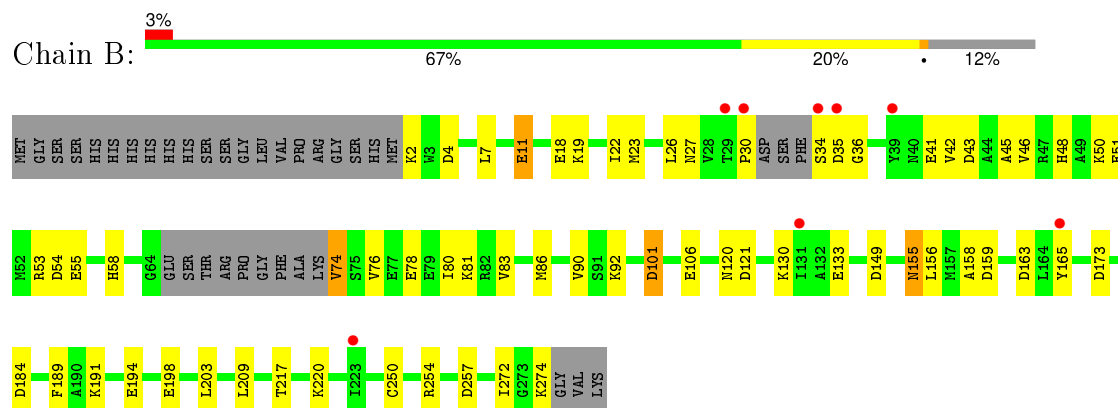
### 3 Residue-property plots [i](#)

These plots are drawn for all protein, RNA and DNA chains in the entry. The first graphic for a chain summarises the proportions of errors displayed in the second graphic. The second graphic shows the sequence view annotated by issues in geometry and electron density. Residues are color-coded according to the number of geometric quality criteria for which they contain at least one outlier: green = 0, yellow = 1, orange = 2 and red = 3 or more. A red dot above a residue indicates a poor fit to the electron density ( $RSRZ > 2$ ). Stretches of 2 or more consecutive residues without any outlier are shown as a green connector. Residues present in the sample, but not in the model, are shown in grey.

#### • Molecule 1: DHPS, Dihydropteroate synthase



#### • Molecule 1: DHPS, Dihydropteroate synthase



## 4 Data and refinement statistics

Property	Value	Source
Space group	P 62 2 2	Depositor
Cell constants a, b, c, $\alpha$ , $\beta$ , $\gamma$	97.55Å 97.55Å 263.16Å 90.00° 90.00° 120.00°	Depositor
Resolution (Å)	81.70 – 2.15 80.44 – 2.15	Depositor EDS
% Data completeness (in resolution range)	94.0 (81.70-2.15) 94.0 (80.44-2.15)	Depositor EDS
$R_{merge}$	(Not available)	Depositor
$R_{sym}$	0.07	Depositor
$\langle I/\sigma(I) \rangle$ <sup>1</sup>	3.25 (at 2.14Å)	Xtriage
Refinement program	REFMAC 5.1.24	Depositor
R, $R_{free}$	0.231 , 0.280 0.226 , 0.268	Depositor DCC
$R_{free}$ test set	1954 reflections (5.30%)	DCC
Wilson B-factor (Å <sup>2</sup> )	45.4	Xtriage
Anisotropy	0.732	Xtriage
Bulk solvent $k_{sol}$ (e/Å <sup>3</sup> ), $B_{sol}$ (Å <sup>2</sup> )	0.36 , 50.0	EDS
Estimated twinning fraction	No twinning to report.	Xtriage
L-test for twinning <sup>2</sup>	$\langle  L  \rangle = 0.52$ , $\langle L^2 \rangle = 0.36$	Xtriage
Outliers	4 of 38828 reflections (0.010%)	Xtriage
$F_o, F_c$ correlation	0.96	EDS
Total number of atoms	4338	wwPDB-VP
Average B, all atoms (Å <sup>2</sup> )	37.0	wwPDB-VP

Xtriage's analysis on translational NCS is as follows: *The analyses of the Patterson function reveals a significant off-origin peak that is 44.79 % of the origin peak, indicating pseudo translational symmetry. The chance of finding a peak of this or larger height randomly in a structure without pseudo translational symmetry is equal to 1.4508e-04. The detected translational NCS is most likely also responsible for the elevated intensity ratio.*

<sup>1</sup>Intensities estimated from amplitudes.

<sup>2</sup>Theoretical values of  $\langle |L| \rangle$ ,  $\langle L^2 \rangle$  for acentric reflections are 0.5, 0.375 respectively for untwinned datasets, and 0.333, 0.2 for perfectly twinned datasets.



## 5 Model quality ⓘ

### 5.1 Standard geometry ⓘ

Bond lengths and bond angles in the following residue types are not validated in this section: SO4, PT1

The Z score for a bond length (or angle) is the number of standard deviations the observed value is removed from the expected value. A bond length (or angle) with  $|Z| > 5$  is considered an outlier worth inspection. RMSZ is the root-mean-square of all Z scores of the bond lengths (or angles).

Mol	Chain	Bond lengths		Bond angles	
		RMSZ	# $ Z  > 5$	RMSZ	# $ Z  > 5$
1	A	0.84	0/2086	0.99	15/2812 (0.5%)
1	B	0.72	0/2050	0.91	11/2763 (0.4%)
All	All	0.78	0/4136	0.95	26/5575 (0.5%)

There are no bond length outliers.

All (26) bond angle outliers are listed below:

Mol	Chain	Res	Type	Atoms	Z	Observed(°)	Ideal(°)
1	A	121	ASP	CB-CG-OD2	9.68	127.01	118.30
1	B	184	ASP	CB-CG-OD2	8.92	126.33	118.30
1	A	184	ASP	CB-CG-OD2	8.32	125.79	118.30
1	B	43	ASP	CB-CG-OD2	6.72	124.35	118.30
1	B	173	ASP	CB-CG-OD2	6.63	124.27	118.30
1	A	149	ASP	CB-CG-OD2	6.48	124.13	118.30
1	A	178	ASP	CB-CG-OD2	6.40	124.06	118.30
1	B	163	ASP	CB-CG-OD2	6.37	124.03	118.30
1	A	271	MET	CG-SD-CE	6.25	110.20	100.20
1	B	4	ASP	CB-CG-OD2	6.14	123.83	118.30
1	A	173	ASP	CB-CG-OD2	6.13	123.82	118.30
1	B	121	ASP	CB-CG-OD2	6.04	123.73	118.30
1	A	228	ASP	CB-CG-OD2	5.97	123.67	118.30
1	B	35	ASP	CB-CG-OD2	5.95	123.66	118.30
1	B	257	ASP	CB-CG-OD2	5.91	123.62	118.30
1	A	35	ASP	CB-CG-OD2	5.79	123.51	118.30
1	A	101	ASP	CB-CG-OD2	5.57	123.31	118.30
1	A	200	MET	CG-SD-CE	5.53	109.05	100.20
1	A	139	ASP	CB-CG-OD2	5.50	123.25	118.30
1	A	166	ASP	CB-CG-OD2	5.46	123.22	118.30
1	A	61	ASP	CB-CG-OD2	5.26	123.03	118.30
1	B	149	ASP	CB-CG-OD2	5.24	123.02	118.30

*Continued on next page...*

*Continued from previous page...*

Mol	Chain	Res	Type	Atoms	Z	Observed(°)	Ideal(°)
1	A	159	ASP	CB-CG-OD2	5.17	122.95	118.30
1	B	159	ASP	CB-CG-OD2	5.13	122.92	118.30
1	B	101	ASP	CB-CG-OD2	5.12	122.91	118.30
1	A	163	ASP	CB-CG-OD2	5.04	122.84	118.30

There are no chirality outliers.

There are no planarity outliers.

## 5.2 Too-close contacts

In the following table, the Non-H and H(model) columns list the number of non-hydrogen atoms and hydrogen atoms in the chain respectively. The H(added) column lists the number of hydrogen atoms added and optimized by MolProbity. The Clashes column lists the number of clashes within the asymmetric unit, whereas Symm-Clashes lists symmetry related clashes.

Mol	Chain	Non-H	H(model)	H(added)	Clashes	Symm-Clashes
1	A	2056	0	2071	36	0
1	B	2022	0	2039	33	0
2	A	25	0	0	0	0
2	B	25	0	0	0	0
3	A	23	0	10	1	0
3	B	23	0	10	0	0
4	A	88	0	0	9	0
4	B	76	0	0	5	0
All	All	4338	0	4130	67	0

The all-atom clashscore is defined as the number of clashes found per 1000 atoms (including hydrogen atoms). The all-atom clashscore for this structure is 8.

All (67) close contacts within the same asymmetric unit are listed below, sorted by their clash magnitude.

Atom-1	Atom-2	Interatomic distance (Å)	Clash overlap (Å)
1:B:194:GLU:HG2	4:B:296:HOH:O	1.70	0.92
1:A:113:GLU:HG3	4:A:363:HOH:O	1.68	0.91
1:B:19:LYS:NZ	1:B:58:HIS:NE2	2.18	0.90
1:B:53:ARG:NH1	1:B:54:ASP:OD1	2.05	0.88
1:A:22:ILE:H	1:A:58:HIS:HD1	1.23	0.85
1:B:22:ILE:H	1:B:58:HIS:HD1	1.29	0.80
1:A:51:GLU:O	1:A:55:GLU:HG2	1.88	0.74
1:B:274:LYS:HE2	4:B:358:HOH:O	1.89	0.73

*Continued on next page...*

*Continued from previous page...*

Atom-1	Atom-2	Interatomic distance (Å)	Clash overlap (Å)
1:A:27:ASN:HA	4:A:331:HOH:O	1.93	0.69
1:A:28:VAL:HG12	1:A:28:VAL:O	1.95	0.66
1:A:11:GLU:HG2	4:A:334:HOH:O	1.96	0.65
1:B:36:GLY:HA2	1:B:41:GLU:OE2	1.95	0.65
1:A:119:ILE:HD12	1:A:135:ALA:HB2	1.79	0.65
1:B:30:PRO:HG2	4:B:345:HOH:O	1.99	0.62
1:B:165:TYR:CE1	1:B:209:LEU:HD22	2.35	0.62
1:B:23:MET:SD	1:B:254:ARG:HG3	2.40	0.61
1:B:155:ASN:HD22	1:B:155:ASN:C	2.04	0.61
1:A:2:LYS:HE2	4:A:323:HOH:O	2.02	0.59
1:A:28:VAL:HG13	1:A:86:MET:HE1	1.86	0.57
1:B:130:LYS:HA	1:B:133:GLU:HG3	1.87	0.56
1:B:86:MET:O	1:B:90:VAL:HG23	2.06	0.56
1:A:95:LYS:HA	1:A:95:LYS:HE3	1.88	0.55
1:A:47:ARG:HG2	4:A:352:HOH:O	2.05	0.55
1:B:11:GLU:HG3	4:B:357:HOH:O	2.05	0.55
1:B:106:GLU:HA	1:B:106:GLU:OE1	2.06	0.54
1:A:218:SER:HA	1:A:238:THR:HG23	1.91	0.53
1:A:97:PRO:HA	1:A:117:HIS:ND1	2.26	0.51
1:B:55:GLU:OE1	1:B:55:GLU:HA	2.11	0.50
1:A:39:TYR:CD1	1:B:42:VAL:HB	2.47	0.49
1:A:31:ASP:HA	4:A:365:HOH:O	2.13	0.49
1:A:185:PRO:HG3	1:A:203:LEU:HD21	1.96	0.48
1:A:2:LYS:HE3	1:A:3:TRP:NE1	2.29	0.48
1:A:93:GLU:HG2	4:A:311:HOH:O	2.12	0.48
1:B:51:GLU:O	1:B:55:GLU:HG2	2.14	0.48
1:B:27:ASN:HB2	1:B:48:HIS:ND1	2.30	0.47
1:A:28:VAL:O	1:A:28:VAL:CG1	2.62	0.47
1:A:80:ILE:HG21	1:A:110:GLN:HE21	1.80	0.47
1:A:19:LYS:NZ	1:A:58:HIS:NE2	2.54	0.47
1:A:34:SER:O	1:A:82:ARG:NH2	2.48	0.47
1:B:165:TYR:CZ	1:B:209:LEU:HD22	2.51	0.46
1:A:129:PRO:HG3	4:A:370:HOH:O	2.16	0.46
1:B:26:LEU:HD21	1:B:45:ALA:HB1	1.97	0.46
1:B:101:ASP:HA	1:B:120:ASN:HB3	1.98	0.45
1:B:189:PHE:O	1:B:191:LYS:HG3	2.16	0.45
1:A:172:LYS:HE2	1:A:178:ASP:OD1	2.17	0.45
1:B:74:VAL:N	4:B:336:HOH:O	2.49	0.45
1:A:26:LEU:HD23	1:A:62:ILE:HD13	1.99	0.44
1:B:42:VAL:O	1:B:46:VAL:HG23	2.18	0.43
1:A:150:ASN:HB2	1:A:152:ASN:HD22	1.83	0.43

*Continued on next page...*

*Continued from previous page...*

Atom-1	Atom-2	Interatomic distance (Å)	Clash overlap (Å)
1:B:46:VAL:O	1:B:50:LYS:HG3	2.18	0.43
1:A:95:LYS:CA	1:A:95:LYS:HE3	2.48	0.43
1:A:146:HIS:CD2	1:A:163:ASP:HB2	2.54	0.42
1:A:31:ASP:CG	1:A:41:GLU:HG2	2.39	0.42
1:A:221:SER:H	3:A:283:PT1:C21	2.32	0.42
1:A:155:ASN:HD22	1:A:158:ALA:CB	2.32	0.42
1:B:76:VAL:O	1:B:80:ILE:HG13	2.20	0.41
1:B:155:ASN:ND2	1:B:158:ALA:H	2.18	0.41
1:B:19:LYS:CE	1:B:58:HIS:NE2	2.83	0.41
1:B:156:LEU:HD23	1:B:198:GLU:HG2	2.03	0.41
1:A:160:MET:HB2	1:A:160:MET:HE2	1.39	0.41
1:A:39:TYR:CD1	1:B:42:VAL:HG12	2.56	0.41
1:A:154:ARG:NH2	4:A:341:HOH:O	2.34	0.40
1:B:11:GLU:HG3	1:B:11:GLU:H	1.62	0.40
1:A:34:SER:HB2	1:A:36:GLY:H	1.86	0.40
1:A:104:LYS:HG2	1:A:128:GLU:OE2	2.21	0.40
1:B:254:ARG:HD3	1:B:254:ARG:HH11	1.71	0.40
1:B:217:THR:O	1:B:220:LYS:HG3	2.22	0.40

There are no symmetry-related clashes.

## 5.3 Torsion angles ⓘ

### 5.3.1 Protein backbone ⓘ

In the following table, the Percentiles column shows the percent Ramachandran outliers of the chain as a percentile score with respect to all X-ray entries followed by that with respect to entries of similar resolution.

The Analysed column shows the number of residues for which the backbone conformation was analysed, and the total number of residues.

Mol	Chain	Analysed	Favoured	Allowed	Outliers	Percentiles	
1	A	261/297 (88%)	254 (97%)	7 (3%)	0	100	100
1	B	255/297 (86%)	248 (97%)	7 (3%)	0	100	100
All	All	516/594 (87%)	502 (97%)	14 (3%)	0	100	100

There are no Ramachandran outliers to report.

### 5.3.2 Protein sidechains ⓘ

In the following table, the Percentiles column shows the percent sidechain outliers of the chain as a percentile score with respect to all X-ray entries followed by that with respect to entries of similar resolution.

The Analysed column shows the number of residues for which the sidechain conformation was analysed, and the total number of residues.

Mol	Chain	Analysed	Rotameric	Outliers	Percentiles	
1	A	221/247 (90%)	208 (94%)	13 (6%)	24	18
1	B	217/247 (88%)	203 (94%)	14 (6%)	21	15
All	All	438/494 (89%)	411 (94%)	27 (6%)	23	17

All (27) residues with a non-rotameric sidechain are listed below:

Mol	Chain	Res	Type
1	A	7	LEU
1	A	18	GLU
1	A	38	SER
1	A	41	GLU
1	A	73	LYS
1	A	75	SER
1	A	78	GLU
1	A	83	VAL
1	A	95	LYS
1	A	148	ARG
1	A	151	MET
1	A	154	ARG
1	A	250	CYS
1	B	2	LYS
1	B	7	LEU
1	B	11	GLU
1	B	18	GLU
1	B	34	SER
1	B	74	VAL
1	B	78	GLU
1	B	81	LYS
1	B	83	VAL
1	B	92	LYS
1	B	155	ASN
1	B	203	LEU
1	B	250	CYS
1	B	272	ILE

Some sidechains can be flipped to improve hydrogen bonding and reduce clashes. All (9) such sidechains are listed below:

Mol	Chain	Res	Type
1	A	88	GLN
1	A	110	GLN
1	A	152	ASN
1	A	155	ASN
1	A	180	ASN
1	B	27	ASN
1	B	88	GLN
1	B	155	ASN
1	B	180	ASN

### 5.3.3 RNA [i](#)

There are no RNA molecules in this entry.

## 5.4 Non-standard residues in protein, DNA, RNA chains [i](#)

There are no non-standard protein/DNA/RNA residues in this entry.

## 5.5 Carbohydrates [i](#)

There are no carbohydrates in this entry.

## 5.6 Ligand geometry [i](#)

12 ligands are modelled in this entry.

In the following table, the Counts columns list the number of bonds (or angles) for which Mogul statistics could be retrieved, the number of bonds (or angles) that are observed in the model and the number of bonds (or angles) that are defined in the chemical component dictionary. The Link column lists molecule types, if any, to which the group is linked. The Z score for a bond length (or angle) is the number of standard deviations the observed value is removed from the expected value. A bond length (or angle) with  $|Z| > 2$  is considered an outlier worth inspection. RMSZ is the root-mean-square of all Z scores of the bond lengths (or angles).

Mol	Type	Chain	Res	Link	Bond lengths			Bond angles		
					Counts	RMSZ	$\# Z  > 2$	Counts	RMSZ	$\# Z  > 2$
2	SO4	A	278	-	4,4,4	0.25	0	6,6,6	0.11	0
2	SO4	A	279	-	4,4,4	0.17	0	6,6,6	0.27	0
2	SO4	A	280	-	4,4,4	0.15	0	6,6,6	0.49	0

Mol	Type	Chain	Res	Link	Bond lengths			Bond angles		
					Counts	RMSZ	# Z  > 2	Counts	RMSZ	# Z  > 2
2	SO4	A	281	-	4,4,4	0.19	0	6,6,6	0.30	0
2	SO4	A	282	-	4,4,4	0.23	0	6,6,6	0.29	0
3	PT1	A	283	-	20,25,25	0.85	1 (5%)	25,35,35	1.71	5 (20%)
2	SO4	B	278	-	4,4,4	0.11	0	6,6,6	0.22	0
2	SO4	B	279	-	4,4,4	0.20	0	6,6,6	0.40	0
2	SO4	B	280	-	4,4,4	0.05	0	6,6,6	0.27	0
2	SO4	B	281	-	4,4,4	0.20	0	6,6,6	0.33	0
2	SO4	B	282	-	4,4,4	0.22	0	6,6,6	0.26	0
3	PT1	B	283	-	20,25,25	0.82	1 (5%)	25,35,35	1.72	4 (16%)

In the following table, the Chirals column lists the number of chiral outliers, the number of chiral centers analysed, the number of these observed in the model and the number defined in the chemical component dictionary. Similar counts are reported in the Torsion and Rings columns. '-' means no outliers of that kind were identified.

Mol	Type	Chain	Res	Link	Chirals	Torsions	Rings
2	SO4	A	278	-	-	0/0/0/0	0/0/0/0
2	SO4	A	279	-	-	0/0/0/0	0/0/0/0
2	SO4	A	280	-	-	0/0/0/0	0/0/0/0
2	SO4	A	281	-	-	0/0/0/0	0/0/0/0
2	SO4	A	282	-	-	0/0/0/0	0/0/0/0
3	PT1	A	283	-	-	0/5/9/9	0/3/3/3
2	SO4	B	278	-	-	0/0/0/0	0/0/0/0
2	SO4	B	279	-	-	0/0/0/0	0/0/0/0
2	SO4	B	280	-	-	0/0/0/0	0/0/0/0
2	SO4	B	281	-	-	0/0/0/0	0/0/0/0
2	SO4	B	282	-	-	0/0/0/0	0/0/0/0
3	PT1	B	283	-	-	0/5/9/9	0/3/3/3

All (2) bond length outliers are listed below:

Mol	Chain	Res	Type	Atoms	Z	Observed(Å)	Ideal(Å)
3	B	283	PT1	C10-N6	2.32	1.37	1.32
3	A	283	PT1	C10-N6	2.41	1.37	1.32

All (9) bond angle outliers are listed below:

Mol	Chain	Res	Type	Atoms	Z	Observed(°)	Ideal(°)
3	B	283	PT1	N9-C7-N4	-4.40	120.74	127.44
3	A	283	PT1	N9-C7-N4	-4.34	120.84	127.44
3	A	283	PT1	C17-C15-N14	-2.33	116.61	121.06
3	B	283	PT1	C3-C5-N9	-2.28	118.42	122.11

*Continued on next page...*

*Continued from previous page...*

Mol	Chain	Res	Type	Atoms	Z	Observed(°)	Ideal(°)
3	A	283	PT1	C12-N8-C5	2.21	119.53	116.93
3	A	283	PT1	C13-C10-N6	2.42	121.39	116.81
3	A	283	PT1	N8-C5-N9	2.70	120.01	116.14
3	B	283	PT1	C12-N8-C5	3.66	121.24	116.93
3	B	283	PT1	N8-C5-N9	3.84	121.63	116.14

There are no chirality outliers.

There are no torsion outliers.

There are no ring outliers.

1 monomer is involved in 1 short contact:

Mol	Chain	Res	Type	Clashes	Symm-Clashes
3	A	283	PT1	1	0

## 5.7 Other polymers [i](#)

There are no such residues in this entry.

## 5.8 Polymer linkage issues [i](#)

There are no chain breaks in this entry.



## 6 Fit of model and data [i](#)

### 6.1 Protein, DNA and RNA chains [i](#)

In the following table, the column labelled ‘#RSRZ> 2’ contains the number (and percentage) of RSRZ outliers, followed by percent RSRZ outliers for the chain as percentile scores relative to all X-ray entries and entries of similar resolution. The OWAB column contains the minimum, median, 95<sup>th</sup> percentile and maximum values of the occupancy-weighted average B-factor per residue. The column labelled ‘Q< 0.9’ lists the number of (and percentage) of residues with an average occupancy less than 0.9.

Mol	Chain	Analysed	<RSRZ>	#RSRZ>2	OWAB(Å <sup>2</sup> )	Q<0.9
1	A	265/297 (89%)	0.56	5 (1%) 70 78	19, 35, 56, 65	0
1	B	261/297 (87%)	0.39	8 (3%) 52 62	19, 35, 53, 66	0
All	All	526/594 (88%)	0.48	13 (2%) 61 69	19, 35, 56, 66	0

All (13) RSRZ outliers are listed below:

Mol	Chain	Res	Type	RSRZ
1	B	34	SER	3.6
1	B	30	PRO	3.3
1	A	39	TYR	3.1
1	B	165	TYR	3.0
1	B	35	ASP	2.9
1	B	29	THR	2.9
1	B	131	ILE	2.8
1	B	39	TYR	2.7
1	A	74	VAL	2.4
1	A	83	VAL	2.4
1	A	111	ALA	2.3
1	B	223	ILE	2.2
1	A	80	ILE	2.0

### 6.2 Non-standard residues in protein, DNA, RNA chains [i](#)

There are no non-standard protein/DNA/RNA residues in this entry.

### 6.3 Carbohydrates [i](#)

There are no carbohydrates in this entry.

## 6.4 Ligands [i](#)

In the following table, the Atoms column lists the number of modelled atoms in the group and the number defined in the chemical component dictionary. LLDF column lists the quality of electron density of the group with respect to its neighbouring residues in protein, DNA or RNA chains. The B-factors column lists the minimum, median, 95<sup>th</sup> percentile and maximum values of B factors of atoms in the group. The column labelled 'Q< 0.9' lists the number of atoms with occupancy less than 0.9.

Mol	Type	Chain	Res	Atoms	RSCC	RSR	LLDF	B-factors(Å <sup>2</sup> )	Q<0.9
2	SO4	A	278	5/5	0.96	0.12	-0.85	60,62,62,63	0
3	PT1	B	283	23/23	0.95	0.12	-1.08	53,62,68,71	0
3	PT1	A	283	23/23	0.94	0.12	-1.49	56,61,65,66	0
2	SO4	B	280	5/5	0.91	0.07	-	97,97,99,99	0
2	SO4	B	279	5/5	0.94	0.09	-	83,84,86,86	0
2	SO4	B	281	5/5	0.93	0.11	-	93,93,94,94	0
2	SO4	B	278	5/5	0.97	0.09	-	76,76,78,78	0
2	SO4	A	279	5/5	0.94	0.10	-	81,82,85,86	0
2	SO4	A	280	5/5	0.87	0.13	-	96,96,98,99	0
2	SO4	B	282	5/5	0.82	0.20	-	99,101,101,102	0
2	SO4	A	282	5/5	0.80	0.41	-	110,110,111,111	0
2	SO4	A	281	5/5	0.93	0.16	-	99,100,101,101	0

## 6.5 Other polymers [i](#)

There are no such residues in this entry.