



Full wwPDB X-ray Structure Validation Report ⓘ

Feb 1, 2016 – 08:39 PM GMT

PDB ID : 4TTY
Title : DEAD-box helicase Mss116 bound to ssRNA and CDP-BeF
Authors : Mallam, A.L.; Sidote, D.J.; Lambowitz, A.M.
Deposited on : 2014-07-09
Resolution : 2.74 Å(reported)

This is a Full wwPDB X-ray Structure Validation Report for a publicly released PDB entry.
We welcome your comments at validation@mail.wwpdb.org
A user guide is available at
<http://wwpdb.org/validation/2016/XrayValidationReportHelp>
with specific help available everywhere you see the ⓘ symbol.

The following versions of software and data (see [references ⓘ](#)) were used in the production of this report:

MolProbity : 4.02b-467
Mogul : 1.7 (RC4), CSD as536be (2015)
Xtriage (Phenix) : 1.9-1692
EDS : rb-20026688
Percentile statistics : 20151230.v01 (using entries in the PDB archive December 30th 2015)
Refmac : 5.8.0135
CCP4 : 6.5.0
Ideal geometry (proteins) : Engh & Huber (2001)
Ideal geometry (DNA, RNA) : Parkinson et al. (1996)
Validation Pipeline (wwPDB-VP) : trunk26865

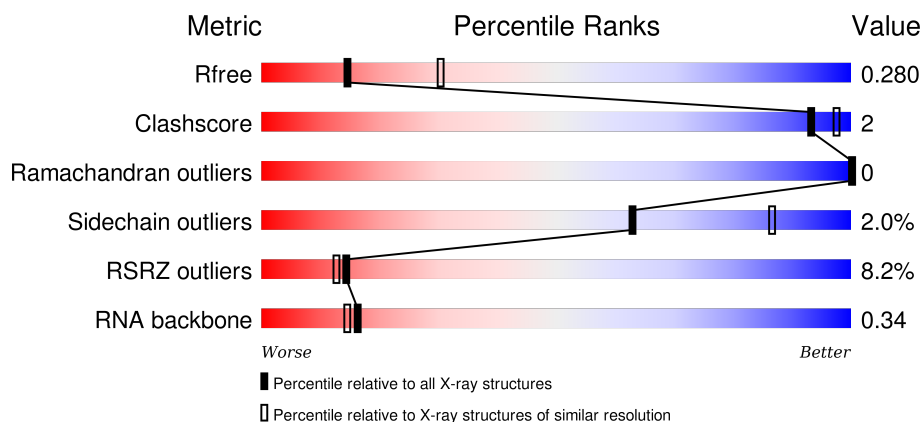
1 Overall quality at a glance

The following experimental techniques were used to determine the structure:

X-RAY DIFFRACTION

The reported resolution of this entry is 2.74 Å.

Percentile scores (ranging between 0-100) for global validation metrics of the entry are shown in the following graphic. The table shows the number of entries on which the scores are based.



Metric	Whole archive (#Entries)	Similar resolution (#Entries, resolution range(Å))
R_{free}	91344	3050 (2.78-2.70)
Clashscore	102246	3424 (2.78-2.70)
Ramachandran outliers	100387	3367 (2.78-2.70)
Sidechain outliers	100360	3368 (2.78-2.70)
RSRZ outliers	91569	3055 (2.78-2.70)
RNA backbone	2183	1012 (3.12-2.36)

The table below summarises the geometric issues observed across the polymeric chains and their fit to the electron density. The red, orange, yellow and green segments on the lower bar indicate the fraction of residues that contain outliers for ≥ 3 , 2, 1 and 0 types of geometric quality criteria. A grey segment represents the fraction of residues that are not modelled. The numeric value for each fraction is indicated below the corresponding segment, with a dot representing fractions $\leq 5\%$. The upper red bar (where present) indicates the fraction of residues that have poor fit to the electron density. The numeric value is given above the bar.

Mol	Chain	Length	Quality of chain
1	B	9	<div> <div>56%</div> <div> <div></div> <div>67%</div> <div>22%</div> <div>11%</div> </div> </div>
2	A	509	<div> <div>7%</div> <div> <div></div> <div>93%</div> <div>6%</div> </div> </div>

2 Entry composition [i](#)

There are 6 unique types of molecules in this entry. The entry contains 7887 atoms, of which 3809 are hydrogens and 0 are deuteriums.

In the tables below, the ZeroOcc column contains the number of atoms modelled with zero occupancy, the AltConf column contains the number of residues with at least one atom in alternate conformation and the Trace column contains the number of residues modelled with at most 2 atoms.

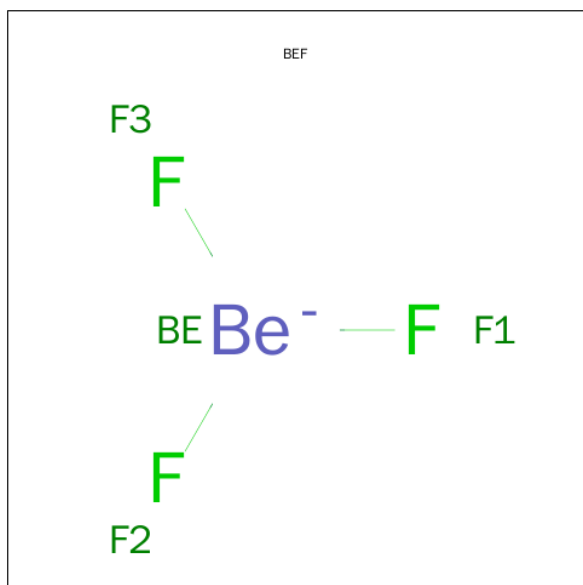
- Molecule 1 is a RNA chain called RNA (5'-R(P*AP*AP*AP*AP*AP*AP*AP*A)-3').

Mol	Chain	Residues	Atoms						ZeroOcc	AltConf	Trace
1	B	9	Total	C	H	N	O	P	0	0	0
			298	90	100	45	54	9			

- Molecule 2 is a protein called ATP-dependent RNA helicase MSS116, mitochondrial.

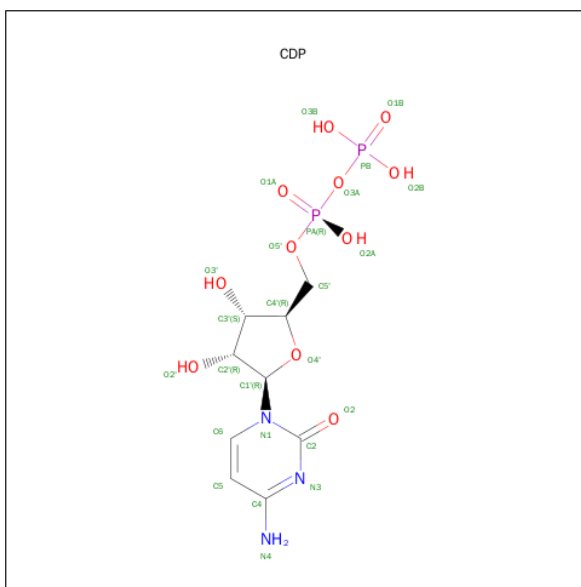
Mol	Chain	Residues	Atoms						ZeroOcc	AltConf	Trace
2	A	505	Total	C	H	N	O	S	1	0	0
			7519	2450	3697	633	725	14			

- Molecule 3 is BERYLLIUM TRIFLUORIDE ION (three-letter code: BEF) (formula: BeF₃).



Mol	Chain	Residues	Atoms			ZeroOcc	AltConf
3	A	1	Total	Be	F	0	0
			4	1	3		

- Molecule 4 is CYTIDINE-5'-DIPHOSPHATE (three-letter code: CDP) (formula: C₉H₁₅N₃O₁₁P₂).



Mol	Chain	Residues	Atoms					ZeroOcc	AltConf
4	A	1	Total	C	H	N	O	P	
			37	9	12	3	11	2	

- Molecule 5 is MAGNESIUM ION (three-letter code: MG) (formula: Mg).

Mol	Chain	Residues	Atoms		ZeroOcc	AltConf
5	A	1	Total	Mg		
			1	1	0	0

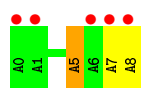
- Molecule 6 is water.

Mol	Chain	Residues	Atoms		ZeroOcc	AltConf
6	A	28	Total	O		
			28	28	0	0

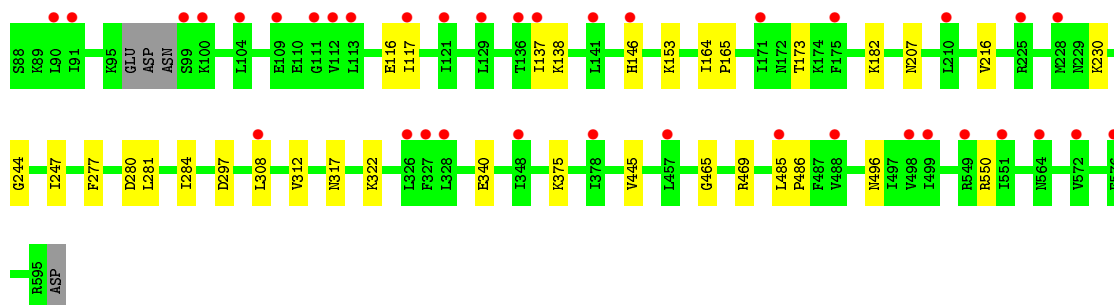
3 Residue-property plots [i](#)

These plots are drawn for all protein, RNA and DNA chains in the entry. The first graphic for a chain summarises the proportions of errors displayed in the second graphic. The second graphic shows the sequence view annotated by issues in geometry and electron density. Residues are color-coded according to the number of geometric quality criteria for which they contain at least one outlier: green = 0, yellow = 1, orange = 2 and red = 3 or more. A red dot above a residue indicates a poor fit to the electron density ($RSRZ > 2$). Stretches of 2 or more consecutive residues without any outlier are shown as a green connector. Residues present in the sample, but not in the model, are shown in grey.

- Molecule 1: RNA (5'-R(P*AP*AP*AP*AP*AP*AP*AP*A)-3')



- Molecule 2: ATP-dependent RNA helicase MSS116, mitochondrial



4 Data and refinement statistics

Property	Value	Source
Space group	P 21 21 2	Depositor
Cell constants a, b, c, α , β , γ	89.64Å 126.84Å 55.30Å 90.00° 90.00° 90.00°	Depositor
Resolution (Å)	47.07 – 2.74 47.07 – 2.74	Depositor EDS
% Data completeness (in resolution range)	98.6 (47.07-2.74) 98.3 (47.07-2.74)	Depositor EDS
R_{merge}	0.13	Depositor
R_{sym}	(Not available)	Depositor
$\langle I/\sigma(I) \rangle$ ¹	6.30 (at 2.73Å)	Xtriage
Refinement program	PHENIX (phenix.refine: 1.8.4_1496)	Depositor
R, R_{free}	0.223 , 0.267 0.238 , 0.280	Depositor DCC
R_{free} test set	854 reflections (5.31%)	DCC
Wilson B-factor (Å ²)	55.0	Xtriage
Anisotropy	0.920	Xtriage
Bulk solvent k_{sol} (e/Å ³), B_{sol} (Å ²)	0.37 , 63.4	EDS
Estimated twinning fraction	No twinning to report.	Xtriage
L-test for twinning ²	$\langle L \rangle = 0.51$, $\langle L^2 \rangle = 0.35$	Xtriage
Outliers	1 of 16997 reflections (0.006%)	Xtriage
F_o, F_c correlation	0.93	EDS
Total number of atoms	7887	wwPDB-VP
Average B, all atoms (Å ²)	81.0	wwPDB-VP

Xtriage's analysis on translational NCS is as follows: *The largest off-origin peak in the Patterson function is 5.22% of the height of the origin peak. No significant pseudotranslation is detected.*

¹Intensities estimated from amplitudes.

²Theoretical values of $\langle |L| \rangle$, $\langle L^2 \rangle$ for acentric reflections are 0.5, 0.375 respectively for untwinned datasets, and 0.333, 0.2 for perfectly twinned datasets.

5 Model quality [i](#)

5.1 Standard geometry [i](#)

Bond lengths and bond angles in the following residue types are not validated in this section: BEF, MG, CDP

The Z score for a bond length (or angle) is the number of standard deviations the observed value is removed from the expected value. A bond length (or angle) with $|Z| > 5$ is considered an outlier worth inspection. RMSZ is the root-mean-square of all Z scores of the bond lengths (or angles).

Mol	Chain	Bond lengths		Bond angles	
		RMSZ	$\# Z > 5$	RMSZ	$\# Z > 5$
1	B	0.19	0/224	0.64	0/347
2	A	0.23	0/3886	0.39	0/5269
All	All	0.23	0/4110	0.41	0/5616

There are no bond length outliers.

There are no bond angle outliers.

There are no chirality outliers.

There are no planarity outliers.

5.2 Too-close contacts [i](#)

In the following table, the Non-H and H(model) columns list the number of non-hydrogen atoms and hydrogen atoms in the chain respectively. The H(added) column lists the number of hydrogen atoms added and optimized by MolProbity. The Clashes column lists the number of clashes within the asymmetric unit, whereas Symm-Clashes lists symmetry related clashes.

Mol	Chain	Non-H	H(model)	H(added)	Clashes	Symm-Clashes
1	B	198	100	100	1	0
2	A	3822	3697	3713	15	0
3	A	4	0	0	0	0
4	A	25	12	12	1	0
5	A	1	0	0	0	0
6	A	28	0	0	0	0
All	All	4078	3809	3825	15	0

The all-atom clashscore is defined as the number of clashes found per 1000 atoms (including hydrogen atoms). The all-atom clashscore for this structure is 2.

All (15) close contacts within the same asymmetric unit are listed below, sorted by their clash

magnitude.

Atom-1	Atom-2	Interatomic distance (Å)	Clash overlap (Å)
2:A:469:ARG:NH2	4:A:602:CDP:O3B	2.24	0.69
2:A:116:GLU:O	2:A:207:ASN:ND2	2.27	0.67
2:A:308:LEU:CD2	2:A:312:VAL:HG11	2.33	0.59
2:A:173:THR:O	2:A:182:LYS:NZ	2.41	0.53
2:A:297:ASP:O	2:A:322:LYS:NZ	2.37	0.52
2:A:308:LEU:HD22	2:A:312:VAL:HG11	1.94	0.48
2:A:164:ILE:HB	2:A:165:PRO:HD3	1.97	0.47
2:A:153:LYS:NZ	2:A:340:GLU:OE1	2.49	0.46
2:A:247:ILE:HG13	2:A:284:ILE:HD11	2.00	0.44
2:A:375:LYS:HD3	2:A:445:VAL:HA	1.98	0.44
2:A:485:LEU:N	2:A:486:PRO:CD	2.81	0.44
2:A:216:VAL:HG23	2:A:230:LYS:HD3	2.02	0.41
2:A:137:ILE:HG23	2:A:138:LYS:N	2.36	0.41
1:B:5:A:H5"	2:A:244:GLY:HA3	2.03	0.41
2:A:465:GLY:O	2:A:469:ARG:NH1	2.48	0.40

There are no symmetry-related clashes.

5.3 Torsion angles [i](#)

5.3.1 Protein backbone [i](#)

In the following table, the Percentiles column shows the percent Ramachandran outliers of the chain as a percentile score with respect to all X-ray entries followed by that with respect to entries of similar resolution.

The Analysed column shows the number of residues for which the backbone conformation was analysed, and the total number of residues.

Mol	Chain	Analysed	Favoured	Allowed	Outliers	Percentiles	
2	A	501/509 (98%)	481 (96%)	20 (4%)	0	100	100

There are no Ramachandran outliers to report.

5.3.2 Protein sidechains [i](#)

In the following table, the Percentiles column shows the percent sidechain outliers of the chain as a percentile score with respect to all X-ray entries followed by that with respect to entries of similar resolution.

The Analysed column shows the number of residues for which the sidechain conformation was analysed, and the total number of residues.

Mol	Chain	Analysed	Rotameric	Outliers	Percentiles
2	A	394/458 (86%)	386 (98%)	8 (2%)	63 86

All (8) residues with a non-rotameric sidechain are listed below:

Mol	Chain	Res	Type
2	A	117	ILE
2	A	146	HIS
2	A	277	PHE
2	A	280	ASP
2	A	281	LEU
2	A	317	ASN
2	A	496	ASN
2	A	550	ARG

Some sidechains can be flipped to improve hydrogen bonding and reduce clashes. All (1) such sidechains are listed below:

Mol	Chain	Res	Type
2	A	446	HIS

5.3.3 RNA ⓘ

Mol	Chain	Analysed	Backbone Outliers	Pucker Outliers
1	B	8/9 (88%)	3 (37%)	0

All (3) RNA backbone outliers are listed below:

Mol	Chain	Res	Type
1	B	5	A
1	B	7	A
1	B	8	A

There are no RNA pucker outliers to report.

5.4 Non-standard residues in protein, DNA, RNA chains ⓘ

There are no non-standard protein/DNA/RNA residues in this entry.

5.5 Carbohydrates [i](#)

There are no carbohydrates in this entry.

5.6 Ligand geometry [i](#)

Of 3 ligands modelled in this entry, 1 is monoatomic - leaving 2 for Mogul analysis.

In the following table, the Counts columns list the number of bonds (or angles) for which Mogul statistics could be retrieved, the number of bonds (or angles) that are observed in the model and the number of bonds (or angles) that are defined in the chemical component dictionary. The Link column lists molecule types, if any, to which the group is linked. The Z score for a bond length (or angle) is the number of standard deviations the observed value is removed from the expected value. A bond length (or angle) with $|Z| > 2$ is considered an outlier worth inspection. RMSZ is the root-mean-square of all Z scores of the bond lengths (or angles).

Mol	Type	Chain	Res	Link	Bond lengths			Bond angles		
					Counts	RMSZ	$\# Z > 2$	Counts	RMSZ	$\# Z > 2$
3	BEF	A	601	-	0,3,3	0.00	-	0,3,3	0.00	-
4	CDP	A	602	5	19,26,26	2.95	6 (31%)	27,40,40	1.85	6 (22%)

In the following table, the Chirals column lists the number of chiral outliers, the number of chiral centers analysed, the number of these observed in the model and the number defined in the chemical component dictionary. Similar counts are reported in the Torsion and Rings columns. '-' means no outliers of that kind were identified.

Mol	Type	Chain	Res	Link	Chirals	Torsions	Rings
3	BEF	A	601	-	-	0/0/0/0	0/0/0/0
4	CDP	A	602	5	-	0/12/32/32	0/2/2/2

All (6) bond length outliers are listed below:

Mol	Chain	Res	Type	Atoms	Z	Observed(Å)	Ideal(Å)
4	A	602	CDP	C4-N3	-3.51	1.28	1.35
4	A	602	CDP	C2'-C3'	-2.35	1.47	1.53
4	A	602	CDP	C4-N4	2.72	1.43	1.35
4	A	602	CDP	C5-C4	5.90	1.54	1.40
4	A	602	CDP	C6-N1	6.51	1.45	1.35
4	A	602	CDP	O4'-C1'	7.07	1.50	1.41

All (6) bond angle outliers are listed below:

Mol	Chain	Res	Type	Atoms	Z	Observed(°)	Ideal(°)
4	A	602	CDP	C4'-O4'-C1'	-6.06	103.06	109.72

Continued on next page...

Continued from previous page...

Mol	Chain	Res	Type	Atoms	Z	Observed(°)	Ideal(°)
4	A	602	CDP	C6-N1-C2	-4.20	114.48	121.28
4	A	602	CDP	PA-O3A-PB	-2.58	124.03	132.67
4	A	602	CDP	C2'-C3'-C4'	2.03	106.78	102.61
4	A	602	CDP	O3A-PA-O5'	2.43	109.39	102.94
4	A	602	CDP	C2-N3-C4	2.64	119.34	115.61

There are no chirality outliers.

There are no torsion outliers.

There are no ring outliers.

1 monomer is involved in 1 short contact:

Mol	Chain	Res	Type	Clashes	Symm-Clashes
4	A	602	CDP	1	0

5.7 Other polymers [i](#)

There are no such residues in this entry.

5.8 Polymer linkage issues [i](#)

There are no chain breaks in this entry.

6 Fit of model and data ⓘ

6.1 Protein, DNA and RNA chains ⓘ

In the following table, the column labelled ‘#RSRZ> 2’ contains the number (and percentage) of RSRZ outliers, followed by percent RSRZ outliers for the chain as percentile scores relative to all X-ray entries and entries of similar resolution. The OWAB column contains the minimum, median, 95th percentile and maximum values of the occupancy-weighted average B-factor per residue. The column labelled ‘Q< 0.9’ lists the number of (and percentage) of residues with an average occupancy less than 0.9.

Mol	Chain	Analysed	<RSRZ>	#RSRZ>2	OWAB(Å ²)	Q<0.9
1	B	9/9 (100%)	2.15	5 (55%) 0 0	53, 91, 195, 323	1 (11%)
2	A	505/509 (99%)	0.59	37 (7%) 18 17	33, 70, 119, 170	0
All	All	514/518 (99%)	0.62	42 (8%) 14 13	33, 70, 121, 323	1 (0%)

All (42) RSRZ outliers are listed below:

Mol	Chain	Res	Type	RSRZ
2	A	572	VAL	5.1
2	A	117	ILE	4.9
2	A	111	GLY	4.7
2	A	113	LEU	4.6
1	B	8	A	4.2
2	A	112	VAL	4.2
1	B	0	A	4.0
2	A	104	LEU	3.7
2	A	576	PHE	3.4
2	A	99	SER	3.4
2	A	348	ILE	3.3
2	A	137	ILE	3.2
2	A	498	VAL	3.2
1	B	7	A	3.1
2	A	171	ILE	3.0
2	A	91	ILE	2.9
2	A	327	PHE	2.9
2	A	551	ILE	2.9
2	A	210	LEU	2.8
2	A	90	LEU	2.8
2	A	499	ILE	2.7
1	B	1	A	2.7
2	A	485	LEU	2.7
2	A	129	LEU	2.6

Continued on next page...

Continued from previous page...

Mol	Chain	Res	Type	RSRZ
2	A	121	ILE	2.6
2	A	146	HIS	2.6
1	B	6	A	2.5
2	A	141	LEU	2.4
2	A	109	GLU	2.4
2	A	100	LYS	2.3
2	A	328	LEU	2.2
2	A	457	LEU	2.2
2	A	175	PHE	2.2
2	A	225	ARG	2.1
2	A	564	ASN	2.1
2	A	228	MET	2.1
2	A	549	ARG	2.1
2	A	378	ILE	2.1
2	A	308	LEU	2.0
2	A	326	LEU	2.0
2	A	136	THR	2.0
2	A	488	VAL	2.0

6.2 Non-standard residues in protein, DNA, RNA chains [i](#)

There are no non-standard protein/DNA/RNA residues in this entry.

6.3 Carbohydrates [i](#)

There are no carbohydrates in this entry.

6.4 Ligands [i](#)

In the following table, the Atoms column lists the number of modelled atoms in the group and the number defined in the chemical component dictionary. LLDF column lists the quality of electron density of the group with respect to its neighbouring residues in protein, DNA or RNA chains. The B-factors column lists the minimum, median, 95th percentile and maximum values of B factors of atoms in the group. The column labelled 'Q< 0.9' lists the number of atoms with occupancy less than 0.9.

Mol	Type	Chain	Res	Atoms	RSCC	RSR	LLDF	B-factors(Å ²)	Q<0.9
3	BEF	A	601	4/4	0.86	0.19	0.20	48,84,85,86	0
4	CDP	A	602	25/25	0.94	0.16	-0.56	55,69,84,85	0
5	MG	A	603	1/1	0.97	0.16	-0.70	45,45,45,45	0

6.5 Other polymers [i](#)

There are no such residues in this entry.