



Full wwPDB X-ray Structure Validation Report ⓘ

Feb 12, 2017 – 07:52 PM EST

PDB ID : 5TZW
Title : CRYSTAL STRUCTURE OF HUMAN PHOSPHODIESTERASE 2A IN
COMPLEX WITH 1-[(3,4-difluorophenyl)carbonyl]-3,3-difluoro-5-{5-m
ethyl-[1,2,4]triazolo[1,5-a]pyrimidin-7-yl}piperidine
Authors : Xu, R.; Aertgeerts, K.
Deposited on : 2016-11-22
Resolution : 1.59 Å(reported)

This is a Full wwPDB X-ray Structure Validation Report for a publicly released PDB entry.

We welcome your comments at validation@mail.wwpdb.org

A user guide is available at

<http://wwpdb.org/validation/2016/XrayValidationReportHelp>

with specific help available everywhere you see the ⓘ symbol.

The following versions of software and data (see [references ⓘ](#)) were used in the production of this report:

MolProbity : 4.02b-467
Mogul : 1.7.1 (RC1), CSD as537be (2016)
Xtriage (Phenix) : 1.9-1692
EDS : rb-20028442
Percentile statistics : 20151230.v01 (using entries in the PDB archive December 30th 2015)
Refmac : 5.8.0135
CCP4 : 6.5.0
Ideal geometry (proteins) : Engh & Huber (2001)
Ideal geometry (DNA, RNA) : Parkinson et al. (1996)
Validation Pipeline (wwPDB-VP) : rb-20028442

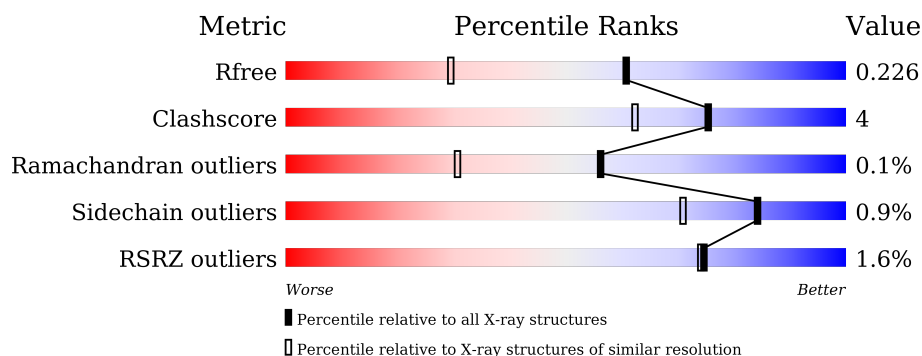
1 Overall quality at a glance

The following experimental techniques were used to determine the structure:

X-RAY DIFFRACTION

The reported resolution of this entry is 1.59 Å.

Percentile scores (ranging between 0-100) for global validation metrics of the entry are shown in the following graphic. The table shows the number of entries on which the scores are based.



Metric	Whole archive (#Entries)	Similar resolution (#Entries, resolution range(Å))
R_{free}	91344	2475 (1.60-1.60)
Clashscore	102246	2732 (1.60-1.60)
Ramachandran outliers	100387	2654 (1.60-1.60)
Sidechain outliers	100360	2653 (1.60-1.60)
RSRZ outliers	91569	2479 (1.60-1.60)

The table below summarises the geometric issues observed across the polymeric chains and their fit to the electron density. The red, orange, yellow and green segments on the lower bar indicate the fraction of residues that contain outliers for ≥ 3 , 2, 1 and 0 types of geometric quality criteria. A grey segment represents the fraction of residues that are not modelled. The numeric value for each fraction is indicated below the corresponding segment, with a dot representing fractions $\leq 5\%$. The upper red bar (where present) indicates the fraction of residues that have poor fit to the electron density. The numeric value is given above the bar.

Mol	Chain	Length	Quality of chain
1	A	344	<div> <div>%</div> <div> <div></div> <div>92%</div> <div>6% ..</div> </div> </div>
1	B	344	<div> <div>2%</div> <div> <div></div> <div>90%</div> <div>7% ..</div> </div> </div>
1	C	344	<div> <div>2%</div> <div> <div></div> <div>85%</div> <div>9% . 5%</div> </div> </div>
1	D	344	<div> <div>%</div> <div> <div></div> <div>88%</div> <div>7% 5%</div> </div> </div>

The following table lists non-polymeric compounds, carbohydrate monomers and non-standard residues in protein, DNA, RNA chains that are outliers for geometric or electron-density-fit crite-

ria:

Mol	Type	Chain	Res	Chirality	Geometry	Clashes	Electron density
2	7P4	A	1001[A]	-	-	-	X
2	7P4	A	1001[B]	-	-	-	X

2 Entry composition

There are 5 unique types of molecules in this entry. The entry contains 12183 atoms, of which 0 are hydrogens and 0 are deuteriums.

In the tables below, the ZeroOcc column contains the number of atoms modelled with zero occupancy, the AltConf column contains the number of residues with at least one atom in alternate conformation and the Trace column contains the number of residues modelled with at most 2 atoms.

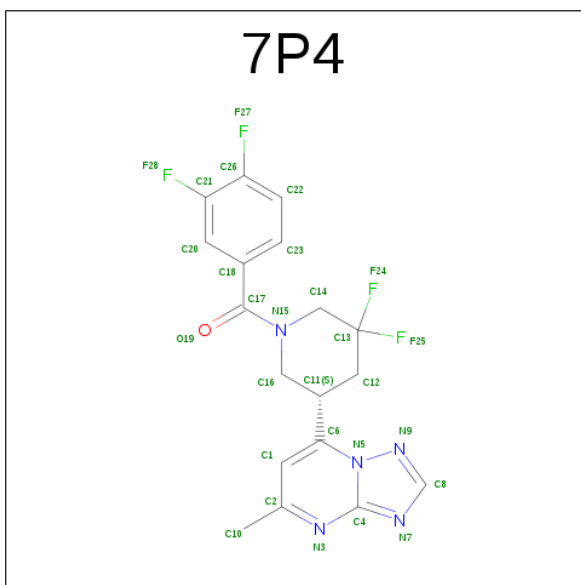
- Molecule 1 is a protein called cGMP-dependent 3',5'-cyclic phosphodiesterase.

Mol	Chain	Residues	Atoms					ZeroOcc	AltConf	Trace
1	A	342	Total	C	N	O	S	0	0	0
			2794	1778	478	512	26			
1	B	339	Total	C	N	O	S	0	0	0
			2775	1768	475	506	26			
1	C	328	Total	C	N	O	S	0	0	0
			2680	1709	461	485	25			
1	D	327	Total	C	N	O	S	0	0	0
			2676	1707	460	484	25			

There are 12 discrepancies between the modelled and reference sequences:

Chain	Residue	Modelled	Actual	Comment	Reference
A	576	SER	-	expression tag	UNP O00408
A	577	ALA	-	expression tag	UNP O00408
A	578	MET	-	expression tag	UNP O00408
B	576	SER	-	expression tag	UNP O00408
B	577	ALA	-	expression tag	UNP O00408
B	578	MET	-	expression tag	UNP O00408
C	576	SER	-	expression tag	UNP O00408
C	577	ALA	-	expression tag	UNP O00408
C	578	MET	-	expression tag	UNP O00408
D	576	SER	-	expression tag	UNP O00408
D	577	ALA	-	expression tag	UNP O00408
D	578	MET	-	expression tag	UNP O00408

- Molecule 2 is [(5S)-3,3-difluoro-5-(5-methyl[1,2,4]triazolo[1,5-a]pyrimidin-7-yl)piperidin-1-yl][(3,4-difluorophenyl)methanone (three-letter code: 7P4) (formula: C₁₈H₁₅F₄N₅O).



Mol	Chain	Residues	Atoms					ZeroOcc	AltConf
2	A	1	Total	C	F	N	O	0	1
			56	36	8	10	2		
2	B	1	Total	C	F	N	O	0	0
			28	18	4	5	1		
2	C	1	Total	C	F	N	O	0	0
			28	18	4	5	1		
2	D	1	Total	C	F	N	O	0	0
			28	18	4	5	1		

- Molecule 3 is ZINC ION (three-letter code: ZN) (formula: Zn).

Mol	Chain	Residues	Atoms		ZeroOcc	AltConf
3	B	1	Total	Zn	0	0
			1	1		
3	A	1	Total	Zn	0	0
			1	1		
3	D	1	Total	Zn	0	0
			1	1		
3	C	1	Total	Zn	0	0
			1	1		

- Molecule 4 is MAGNESIUM ION (three-letter code: MG) (formula: Mg).

Mol	Chain	Residues	Atoms		ZeroOcc	AltConf
4	B	1	Total	Mg	0	0
			1	1		

Continued on next page...

Continued from previous page...

Mol	Chain	Residues	Atoms		ZeroOcc	AltConf
4	A	1	Total 1	Mg 1	0	0
4	D	1	Total 1	Mg 1	0	0
4	C	1	Total 1	Mg 1	0	0

- Molecule 5 is water.

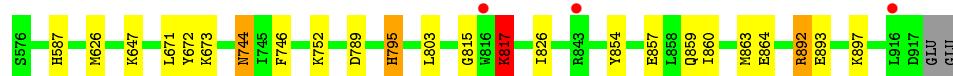
Mol	Chain	Residues	Atoms		ZeroOcc	AltConf
5	A	317	Total 317	O 317	0	0
5	B	284	Total 284	O 284	0	0
5	C	232	Total 232	O 232	0	0
5	D	277	Total 277	O 277	0	0

3 Residue-property plots [i](#)


These plots are drawn for all protein, RNA and DNA chains in the entry. The first graphic for a chain summarises the proportions of errors displayed in the second graphic. The second graphic shows the sequence view annotated by issues in geometry and electron density. Residues are color-coded according to the number of geometric quality criteria for which they contain at least one outlier: green = 0, yellow = 1, orange = 2 and red = 3 or more. A red dot above a residue indicates a poor fit to the electron density ($RSRZ > 2$). Stretches of 2 or more consecutive residues without any outlier are shown as a green connector. Residues present in the sample, but not in the model, are shown in grey.

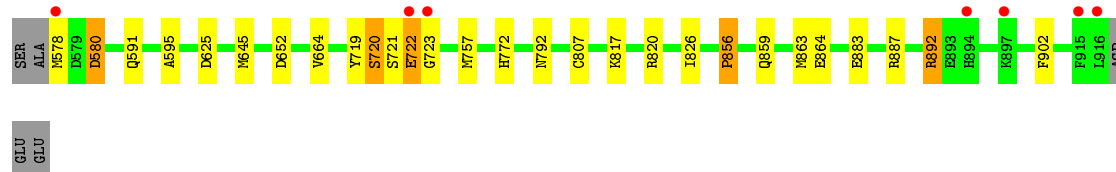
- Molecule 1: cGMP-dependent 3',5'-cyclic phosphodiesterase

Chain A: 




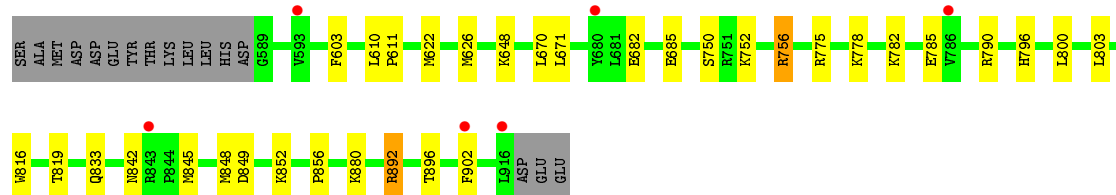
- Molecule 1: cGMP-dependent 3',5'-cyclic phosphodiesterase

Chain B: 




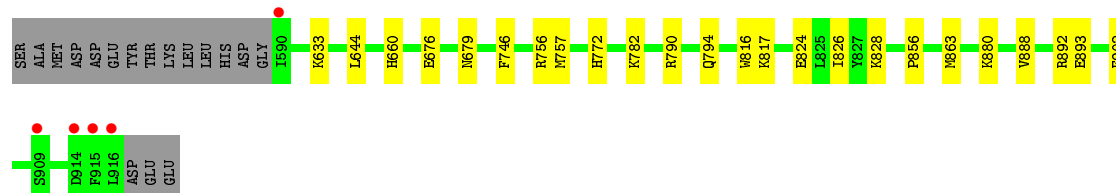
- Molecule 1: cGMP-dependent 3',5'-cyclic phosphodiesterase

Chain C: 



- Molecule 1: cGMP-dependent 3',5'-cyclic phosphodiesterase

Chain D: 



4 Data and refinement statistics

Property	Value	Source
Space group	P 1	Depositor
Cell constants a, b, c, α , β , γ	55.81Å 73.00Å 91.00Å 109.22° 90.96° 91.07°	Depositor
Resolution (Å)	68.91 – 1.59 68.91 – 1.59	Depositor EDS
% Data completeness (in resolution range)	94.6 (68.91-1.59) 84.8 (68.91-1.59)	Depositor EDS
R_{merge}	0.05	Depositor
R_{sym}	(Not available)	Depositor
$\langle I/\sigma(I) \rangle$ ¹	1.53 (at 1.59Å)	Xtriage
Refinement program	PHENIX	Depositor
R, R_{free}	0.188 , 0.225 0.189 , 0.226	Depositor DCC
R_{free} test set	8507 reflections (4.92%)	DCC
Wilson B-factor (Å ²)	16.4	Xtriage
Anisotropy	0.266	Xtriage
Bulk solvent k_{sol} (e/Å ³), B_{sol} (Å ²)	0.40 , 50.9	EDS
L-test for twinning ²	$\langle L \rangle = 0.50$, $\langle L^2 \rangle = 0.34$	Xtriage
Estimated twinning fraction	0.013 for h,-k,-l	Xtriage
F_o, F_c correlation	0.96	EDS
Total number of atoms	12183	wwPDB-VP
Average B, all atoms (Å ²)	27.0	wwPDB-VP

Xtriage's analysis on translational NCS is as follows: *The largest off-origin peak in the Patterson function is 9.59% of the height of the origin peak. No significant pseudotranslation is detected.*

¹Intensities estimated from amplitudes.

²Theoretical values of $\langle |L| \rangle$, $\langle L^2 \rangle$ for acentric reflections are 0.5, 0.333 respectively for untwinned datasets, and 0.375, 0.2 for perfectly twinned datasets.

5 Model quality [i](#)

5.1 Standard geometry [i](#)

Bond lengths and bond angles in the following residue types are not validated in this section: 7P4, ZN, MG

The Z score for a bond length (or angle) is the number of standard deviations the observed value is removed from the expected value. A bond length (or angle) with $|Z| > 5$ is considered an outlier worth inspection. RMSZ is the root-mean-square of all Z scores of the bond lengths (or angles).

Mol	Chain	Bond lengths		Bond angles	
		RMSZ	$\# Z > 5$	RMSZ	$\# Z > 5$
1	A	0.38	1/2861 (0.0%)	0.54	0/3860
1	B	0.36	0/2842	0.52	0/3834
1	C	0.34	0/2745	0.52	0/3703
1	D	0.36	0/2741	0.52	0/3698
All	All	0.36	1/11189 (0.0%)	0.52	0/15095

All (1) bond length outliers are listed below:

Mol	Chain	Res	Type	Atoms	Z	Observed(Å)	Ideal(Å)
1	A	817	LYS	CE-NZ	5.35	1.62	1.49

There are no bond angle outliers.

There are no chirality outliers.

There are no planarity outliers.

5.2 Too-close contacts [i](#)

In the following table, the Non-H and H(model) columns list the number of non-hydrogen atoms and hydrogen atoms in the chain respectively. The H(added) column lists the number of hydrogen atoms added and optimized by MolProbity. The Clashes column lists the number of clashes within the asymmetric unit, whereas Symm-Clashes lists symmetry related clashes.

Mol	Chain	Non-H	H(model)	H(added)	Clashes	Symm-Clashes
1	A	2794	0	2732	21	0
1	B	2775	0	2718	20	0
1	C	2680	0	2633	28	0
1	D	2676	0	2630	18	0
2	A	56	0	0	2	0
2	B	28	0	0	2	0

Continued on next page...

Continued from previous page...

Mol	Chain	Non-H	H(model)	H(added)	Clashes	Symm-Clashes
2	C	28	0	0	0	0
2	D	28	0	0	1	0
3	A	1	0	0	0	0
3	B	1	0	0	0	0
3	C	1	0	0	0	0
3	D	1	0	0	0	0
4	A	1	0	0	0	0
4	B	1	0	0	0	0
4	C	1	0	0	0	0
4	D	1	0	0	0	0
5	A	317	0	0	5	0
5	B	284	0	0	5	0
5	C	232	0	0	6	0
5	D	277	0	0	5	0
All	All	12183	0	10713	85	0

The all-atom clashscore is defined as the number of clashes found per 1000 atoms (including hydrogen atoms). The all-atom clashscore for this structure is 4.

All (85) close contacts within the same asymmetric unit are listed below, sorted by their clash magnitude.

Atom-1	Atom-2	Interatomic distance (Å)	Clash overlap (Å)
1:C:880:LYS:NZ	5:C:1101:HOH:O	1.92	1.02
1:C:752:LYS:NZ	5:C:1102:HOH:O	2.05	0.89
1:A:789:ASP:H	1:A:795:HIS:HD2	1.19	0.88
1:D:676:GLU:OE2	1:D:880:LYS:NZ	2.09	0.84
1:B:883:GLU:OE1	1:B:887:ARG:NH2	2.15	0.79
1:C:682:GLU:OE2	1:C:756:ARG:NH2	2.20	0.75
1:A:864:GLU:OE1	1:A:892:ARG:NH2	2.23	0.71
1:B:652:ASP:OD2	5:B:1101:HOH:O	2.11	0.66
1:D:756:ARG:NH1	5:D:1102:HOH:O	2.28	0.65
1:A:893:GLU:HG2	1:A:897:LYS:NZ	2.12	0.63
1:B:772:HIS:HD2	5:B:1204:HOH:O	1.82	0.61
1:C:892:ARG:HH12	1:C:896:THR:CG2	2.13	0.61
1:C:880:LYS:NZ	5:C:1105:HOH:O	2.32	0.60
1:D:892:ARG:NH1	1:D:893:GLU:OE1	2.34	0.60
1:A:789:ASP:H	1:A:795:HIS:CD2	2.11	0.59
1:B:792:ASN:HA	5:B:1112:HOH:O	2.03	0.59
1:C:880:LYS:N	1:C:880:LYS:HD3	2.19	0.58
1:A:817:LYS:NZ	5:A:1101:HOH:O	2.34	0.58
1:C:610:LEU:HD12	1:C:611:PRO:HD2	1.86	0.58

Continued on next page...

Continued from previous page...

Atom-1	Atom-2	Interatomic distance (Å)	Clash overlap (Å)
1:C:750:SER:HB2	5:C:1259:HOH:O	2.02	0.58
1:D:772:HIS:HD2	5:D:1160:HOH:O	1.88	0.56
1:C:833:GLN:HB3	1:C:848:MET:HE2	1.86	0.56
1:C:880:LYS:H	1:C:880:LYS:HD3	1.73	0.54
1:A:744:ASN:HD22	1:A:746:PHE:H	1.54	0.54
1:B:580:ASP:OD2	1:C:842:ASN:ND2	2.41	0.54
1:B:721:SER:O	1:B:723:GLY:N	2.42	0.52
1:C:782:LYS:HE3	1:C:785:GLU:OE2	2.10	0.52
1:A:587:HIS:HE1	5:A:1365:HOH:O	1.92	0.52
1:D:824:GLU:HG2	1:D:828:LYS:HE3	1.91	0.51
1:D:679:ASN:HD21	1:D:790:ARG:HH21	1.58	0.51
1:B:864:GLU:OE1	1:B:892:ARG:NH2	2.44	0.50
1:B:719:TYR:O	1:B:722:GLU:OE1	2.30	0.50
1:C:892:ARG:HH12	1:C:896:THR:HG21	1.76	0.50
1:B:591:GLN:HG2	1:B:595:ALA:HB3	1.94	0.50
1:C:849:ASP:OD1	1:C:852:LYS:HD2	2.11	0.50
1:A:893:GLU:HG2	1:A:897:LYS:HZ3	1.78	0.49
1:C:845:MET:HG2	1:C:848:MET:HG3	1.95	0.48
1:A:795:HIS:HE1	5:A:1368:HOH:O	1.96	0.48
1:A:671:LEU:HD13	1:A:803:LEU:HD22	1.96	0.48
1:B:817:LYS:HG2	1:B:820:ARG:HH12	1.78	0.47
1:D:633:LYS:N	1:D:633:LYS:HD2	2.29	0.47
1:C:790:ARG:HH11	1:C:796:HIS:HE1	1.62	0.47
1:A:860:ILE:O	1:A:864:GLU:HG3	2.15	0.47
1:D:856:PRO:HG3	1:D:902:PHE:CD1	2.49	0.47
1:A:854:TYR:HD2	1:A:857:GLU:HB3	1.80	0.46
1:D:782:LYS:HE3	5:D:1354:HOH:O	2.15	0.46
1:A:752:LYS:HE2	1:A:752:LYS:HA	1.97	0.46
1:B:720:SER:C	1:B:722:GLU:H	2.19	0.46
1:B:856:PRO:HG3	1:B:902:PHE:CD1	2.51	0.46
1:D:794:GLN:OE1	1:D:794:GLN:HA	2.16	0.45
1:B:625:ASP:O	1:C:778:LYS:HE2	2.17	0.45
1:C:880:LYS:HE2	1:C:880:LYS:HB2	1.58	0.45
1:A:859:GLN:O	1:A:863:MET:HG2	2.17	0.45
1:D:660:HIS:HD2	5:D:1115:HOH:O	1.99	0.45
1:D:746:PHE:CZ	1:D:757:MET:HE2	2.53	0.44
1:D:816:TRP:CD1	1:D:817:LYS:HD3	2.53	0.44
1:A:744:ASN:HD22	1:A:744:ASN:C	2.21	0.44
1:A:826:ILE:HD13	2:A:1001[B]:7P4:C4	2.48	0.44
1:C:845:MET:CG	1:C:848:MET:HG3	2.48	0.44
1:C:685:GLU:HB3	1:C:800:LEU:HD11	2.00	0.43

Continued on next page...

Continued from previous page...

Atom-1	Atom-2	Interatomic distance (Å)	Clash overlap (Å)
1:B:645:MET:HG2	5:B:1180:HOH:O	2.17	0.43
1:C:816:TRP:HA	1:C:819:THR:HG22	2.00	0.43
1:C:603:PHE:HA	1:C:670:LEU:HD13	2.00	0.43
1:C:622:MET:O	1:C:626:MET:HG3	2.18	0.43
1:C:778:LYS:NZ	5:C:1107:HOH:O	2.36	0.43
5:B:1264:HOH:O	1:C:775:ARG:HG2	2.18	0.43
1:C:648:LYS:HE2	5:C:1146:HOH:O	2.19	0.43
1:D:863:MET:CE	1:D:888:VAL:HG13	2.50	0.42
1:B:580:ASP:OD1	1:B:580:ASP:N	2.52	0.42
1:A:826:ILE:HD13	2:A:1001[A]:7P4:C4	2.50	0.42
1:B:826:ILE:CD1	2:B:1001:7P4:C6	2.98	0.42
1:D:644:LEU:HA	1:D:644:LEU:HD23	1.88	0.42
1:A:815:GLY:N	5:A:1101:HOH:O	2.52	0.42
1:C:856:PRO:HG3	1:C:902:PHE:CD1	2.56	0.41
1:D:790:ARG:HG3	5:D:1261:HOH:O	2.20	0.41
1:C:671:LEU:HD13	1:C:803:LEU:HD22	2.02	0.41
1:B:664:VAL:HG13	1:B:807:CYS:HB3	2.03	0.41
1:A:673:LYS:HB3	1:A:673:LYS:HE3	1.96	0.41
1:B:859:GLN:O	1:B:863:MET:HG2	2.21	0.41
1:D:679:ASN:ND2	1:D:790:ARG:HH21	2.18	0.41
1:B:826:ILE:HD13	2:B:1001:7P4:C6	2.52	0.40
1:A:647:LYS:NZ	5:A:1114:HOH:O	2.52	0.40
1:D:826:ILE:HD13	2:D:1001:7P4:N5	2.37	0.40
1:A:626:MET:HG2	1:A:672:TYR:CD1	2.57	0.40
1:B:757:MET:HE2	1:B:757:MET:HB3	1.93	0.40

There are no symmetry-related clashes.

5.3 Torsion angles

5.3.1 Protein backbone

In the following table, the Percentiles column shows the percent Ramachandran outliers of the chain as a percentile score with respect to all X-ray entries followed by that with respect to entries of similar resolution.

The Analysed column shows the number of residues for which the backbone conformation was analysed, and the total number of residues.

Mol	Chain	Analysed	Favoured	Allowed	Outliers	Percentiles	
1	A	340/344 (99%)	338 (99%)	2 (1%)	0	100	100

Continued on next page...

Continued from previous page...

Mol	Chain	Analysed	Favoured	Allowed	Outliers	Percentiles	
1	B	337/344 (98%)	331 (98%)	5 (2%)	1 (0%)	46	23
1	C	326/344 (95%)	321 (98%)	5 (2%)	0	100	100
1	D	325/344 (94%)	324 (100%)	1 (0%)	0	100	100
All	All	1328/1376 (96%)	1314 (99%)	13 (1%)	1 (0%)	56	31

All (1) Ramachandran outliers are listed below:

Mol	Chain	Res	Type
1	B	722	GLU

5.3.2 Protein sidechains ⓘ

In the following table, the Percentiles column shows the percent sidechain outliers of the chain as a percentile score with respect to all X-ray entries followed by that with respect to entries of similar resolution.

The Analysed column shows the number of residues for which the sidechain conformation was analysed, and the total number of residues.

Mol	Chain	Analysed	Rotameric	Outliers	Percentiles	
1	A	308/310 (99%)	304 (99%)	4 (1%)	76	56
1	B	306/310 (99%)	301 (98%)	5 (2%)	70	47
1	C	295/310 (95%)	293 (99%)	2 (1%)	88	78
1	D	295/310 (95%)	295 (100%)	0	100	100
All	All	1204/1240 (97%)	1193 (99%)	11 (1%)	84	71

All (11) residues with a non-rotameric sidechain are listed below:

Mol	Chain	Res	Type
1	A	744	ASN
1	A	795	HIS
1	A	817	LYS
1	A	892	ARG
1	B	578	MET
1	B	580	ASP
1	B	720	SER
1	B	856	PRO
1	B	892	ARG
1	C	756	ARG

Continued on next page...

Continued from previous page...

Mol	Chain	Res	Type
1	C	892	ARG

Some sidechains can be flipped to improve hydrogen bonding and reduce clashes. All (19) such sidechains are listed below:

Mol	Chain	Res	Type
1	A	587	HIS
1	A	744	ASN
1	A	795	HIS
1	A	812	GLN
1	A	842	ASN
1	A	875	GLN
1	A	911	ASN
1	B	660	HIS
1	B	741	HIS
1	B	772	HIS
1	B	812	GLN
1	C	812	GLN
1	C	842	ASN
1	D	660	HIS
1	D	679	ASN
1	D	708	GLN
1	D	772	HIS
1	D	781	GLN
1	D	842	ASN

5.3.3 RNA ⓘ

There are no RNA molecules in this entry.

5.4 Non-standard residues in protein, DNA, RNA chains ⓘ

There are no non-standard protein/DNA/RNA residues in this entry.

5.5 Carbohydrates ⓘ

There are no carbohydrates in this entry.

5.6 Ligand geometry

Of 13 ligands modelled in this entry, 8 are monoatomic - leaving 5 for Mogul analysis.

In the following table, the Counts columns list the number of bonds (or angles) for which Mogul statistics could be retrieved, the number of bonds (or angles) that are observed in the model and the number of bonds (or angles) that are defined in the chemical component dictionary. The Link column lists molecule types, if any, to which the group is linked. The Z score for a bond length (or angle) is the number of standard deviations the observed value is removed from the expected value. A bond length (or angle) with $|Z| > 2$ is considered an outlier worth inspection. RMSZ is the root-mean-square of all Z scores of the bond lengths (or angles).

Mol	Type	Chain	Res	Link	Bond lengths			Bond angles		
					Counts	RMSZ	# Z > 2	Counts	RMSZ	# Z > 2
2	7P4	A	1001[A]	-	24,31,31	1.78	4 (16%)	32,47,47	1.21	4 (12%)
2	7P4	A	1001[B]	-	24,31,31	1.75	4 (16%)	32,47,47	1.17	2 (6%)
2	7P4	B	1001	-	24,31,31	1.70	4 (16%)	32,47,47	1.24	4 (12%)
2	7P4	C	1001	-	24,31,31	1.73	3 (12%)	32,47,47	1.45	8 (25%)
2	7P4	D	1001	-	24,31,31	1.66	3 (12%)	32,47,47	1.35	5 (15%)

In the following table, the Chirals column lists the number of chiral outliers, the number of chiral centers analysed, the number of these observed in the model and the number defined in the chemical component dictionary. Similar counts are reported in the Torsion and Rings columns. '-' means no outliers of that kind were identified.

Mol	Type	Chain	Res	Link	Chirals	Torsions	Rings
2	7P4	A	1001[A]	-	-	0/12/26/26	0/4/4/4
2	7P4	A	1001[B]	-	-	0/12/26/26	0/4/4/4
2	7P4	B	1001	-	-	0/12/26/26	0/4/4/4
2	7P4	C	1001	-	-	0/12/26/26	0/4/4/4
2	7P4	D	1001	-	-	0/12/26/26	0/4/4/4

All (18) bond length outliers are listed below:

Mol	Chain	Res	Type	Atoms	Z	Observed(Å)	Ideal(Å)
2	B	1001	7P4	C1-C6	-4.00	1.33	1.38
2	A	1001[A]	7P4	C1-C6	-3.72	1.34	1.38
2	A	1001[B]	7P4	C1-C6	-3.67	1.34	1.38
2	D	1001	7P4	C1-C6	-3.66	1.34	1.38
2	C	1001	7P4	C1-C6	-3.52	1.34	1.38
2	A	1001[B]	7P4	C4-N7	-2.64	1.31	1.35
2	A	1001[A]	7P4	C4-N7	-2.61	1.31	1.35
2	C	1001	7P4	C4-N7	-2.60	1.31	1.35
2	B	1001	7P4	C4-N7	-2.57	1.31	1.35

Continued on next page...

Continued from previous page...

Mol	Chain	Res	Type	Atoms	Z	Observed(Å)	Ideal(Å)
2	D	1001	7P4	C4-N7	-2.54	1.32	1.35
2	A	1001[A]	7P4	C16-N15	-2.35	1.44	1.46
2	B	1001	7P4	C16-N15	-2.30	1.44	1.46
2	A	1001[B]	7P4	C16-N15	-2.18	1.44	1.46
2	B	1001	7P4	C1-C2	4.72	1.46	1.38
2	D	1001	7P4	C1-C2	4.80	1.47	1.38
2	A	1001[B]	7P4	C1-C2	4.92	1.47	1.38
2	A	1001[A]	7P4	C1-C2	4.95	1.47	1.38
2	C	1001	7P4	C1-C2	5.00	1.47	1.38

All (23) bond angle outliers are listed below:

Mol	Chain	Res	Type	Atoms	Z	Observed(°)	Ideal(°)
2	A	1001[A]	7P4	C10-C2-C1	-3.52	116.91	121.76
2	A	1001[B]	7P4	C10-C2-C1	-3.49	116.95	121.76
2	C	1001	7P4	C10-C2-C1	-3.47	116.98	121.76
2	D	1001	7P4	C10-C2-C1	-2.84	117.84	121.76
2	B	1001	7P4	C10-C2-C1	-2.82	117.87	121.76
2	C	1001	7P4	O19-C17-C18	-2.08	116.21	120.16
2	C	1001	7P4	C12-C11-C16	2.06	113.93	109.85
2	C	1001	7P4	C16-N15-C14	2.11	118.20	113.98
2	B	1001	7P4	F25-C13-C12	2.18	110.89	109.39
2	A	1001[A]	7P4	C12-C11-C16	2.24	114.29	109.85
2	A	1001[A]	7P4	C12-C11-C6	2.25	115.21	112.31
2	C	1001	7P4	C23-C18-C20	2.25	121.95	119.25
2	D	1001	7P4	C16-N15-C14	2.26	118.50	113.98
2	C	1001	7P4	C1-C2-N3	2.28	124.88	122.76
2	A	1001[A]	7P4	C1-C2-N3	2.42	125.01	122.76
2	B	1001	7P4	F25-C13-C14	2.46	111.59	109.17
2	D	1001	7P4	C1-C2-N3	2.47	125.05	122.76
2	C	1001	7P4	C12-C11-C6	2.54	115.60	112.31
2	A	1001[B]	7P4	C1-C2-N3	2.55	125.13	122.76
2	D	1001	7P4	C12-C11-C16	2.66	115.11	109.85
2	B	1001	7P4	C12-C11-C6	2.88	116.03	112.31
2	D	1001	7P4	C12-C11-C6	2.92	116.08	112.31
2	C	1001	7P4	F25-C13-C12	3.04	111.47	109.39

There are no chirality outliers.

There are no torsion outliers.

There are no ring outliers.

4 monomers are involved in 5 short contacts:

Mol	Chain	Res	Type	Clashes	Symm-Clashes
2	A	1001[A]	7P4	1	0
2	A	1001[B]	7P4	1	0
2	B	1001	7P4	2	0
2	D	1001	7P4	1	0

5.7 Other polymers [i](#)

There are no such residues in this entry.

5.8 Polymer linkage issues [i](#)

There are no chain breaks in this entry.

6 Fit of model and data ⓘ

6.1 Protein, DNA and RNA chains ⓘ

In the following table, the column labelled ‘#RSRZ> 2’ contains the number (and percentage) of RSRZ outliers, followed by percent RSRZ outliers for the chain as percentile scores relative to all X-ray entries and entries of similar resolution. The OWAB column contains the minimum, median, 95th percentile and maximum values of the occupancy-weighted average B-factor per residue. The column labelled ‘Q< 0.9’ lists the number of (and percentage) of residues with an average occupancy less than 0.9.

Mol	Chain	Analysed	<RSRZ>	#RSRZ>2	OWAB(Å ²)	Q<0.9
1	A	342/344 (99%)	-0.09	3 (0%) 85 85	11, 22, 44, 59	0
1	B	339/344 (98%)	-0.06	7 (2%) 67 65	11, 24, 43, 57	0
1	C	328/344 (95%)	0.10	6 (1%) 71 70	13, 28, 50, 64	0
1	D	327/344 (95%)	-0.10	5 (1%) 76 75	12, 24, 43, 57	0
All	All	1336/1376 (97%)	-0.04	21 (1%) 74 74	11, 25, 45, 64	0

All (21) RSRZ outliers are listed below:

Mol	Chain	Res	Type	RSRZ
1	B	723	GLY	5.4
1	C	680	TYR	4.8
1	C	786	VAL	4.3
1	C	593	VAL	4.1
1	B	578	MET	3.3
1	C	843	ARG	3.1
1	B	722	GLU	3.0
1	C	916	LEU	2.9
1	D	915	PHE	2.8
1	A	916	LEU	2.7
1	D	916	LEU	2.6
1	B	916	LEU	2.6
1	A	843	ARG	2.4
1	D	590	ILE	2.3
1	A	816	TRP	2.3
1	B	894	HIS	2.1
1	D	914	ASP	2.1
1	B	897	LYS	2.1
1	B	915	PHE	2.1
1	C	902	PHE	2.1
1	D	909	SER	2.0

6.2 Non-standard residues in protein, DNA, RNA chains [i](#)

There are no non-standard protein/DNA/RNA residues in this entry.

6.3 Carbohydrates [i](#)

There are no carbohydrates in this entry.

6.4 Ligands [i](#)

In the following table, the Atoms column lists the number of modelled atoms in the group and the number defined in the chemical component dictionary. LLDF column lists the quality of electron density of the group with respect to its neighbouring residues in protein, DNA or RNA chains. The B-factors column lists the minimum, median, 95th percentile and maximum values of B factors of atoms in the group. The column labelled 'Q< 0.9' lists the number of atoms with occupancy less than 0.9.

Mol	Type	Chain	Res	Atoms	RSCC	RSR	LLDF	B-factors(Å ²)	Q<0.9
2	7P4	A	1001[A]	28/28	0.94	0.10	2.62	13,21,30,34	28
2	7P4	A	1001[B]	28/28	0.94	0.10	2.62	12,21,29,33	28
2	7P4	B	1001	28/28	0.93	0.08	0.88	15,22,33,36	0
2	7P4	C	1001	28/28	0.95	0.08	0.45	13,22,42,52	0
4	MG	A	1003	1/1	1.00	0.07	0.24	11,11,11,11	0
2	7P4	D	1001	28/28	0.95	0.07	0.01	15,20,29,40	0
3	ZN	C	1002	1/1	1.00	0.06	-0.35	16,16,16,16	0
4	MG	C	1003	1/1	1.00	0.06	-0.81	13,13,13,13	0
3	ZN	B	1002	1/1	1.00	0.06	-1.10	15,15,15,15	0
4	MG	D	1003	1/1	1.00	0.05	-2.75	12,12,12,12	0
3	ZN	D	1002	1/1	1.00	0.06	-2.80	16,16,16,16	0
4	MG	B	1003	1/1	1.00	0.05	-2.87	14,14,14,14	0
3	ZN	A	1002	1/1	1.00	0.05	-3.96	14,14,14,14	0

6.5 Other polymers [i](#)

There are no such residues in this entry.