



# Full wwPDB X-ray Structure Validation Report ⓘ

Feb 1, 2016 – 08:55 PM GMT

PDB ID : 4U95  
Title : Coupling of remote alternating-access transport mechanisms for protons and substrates in the multidrug efflux pump AcrB  
Authors : Pos, K.M.  
Deposited on : 2014-08-05  
Resolution : 2.00 Å(reported)

This is a Full wwPDB X-ray Structure Validation Report for a publicly released PDB entry.  
We welcome your comments at [validation@mail.wwpdb.org](mailto:validation@mail.wwpdb.org)  
A user guide is available at  
<http://wwpdb.org/validation/2016/XrayValidationReportHelp>  
with specific help available everywhere you see the ⓘ symbol.

---

The following versions of software and data (see [references ⓘ](#)) were used in the production of this report:

MolProbity : 4.02b-467  
Mogul : 1.7 (RC4), CSD as536be (2015)  
Xtriage (Phenix) : 1.9-1692  
EDS : rb-20026688  
Percentile statistics : 20151230.v01 (using entries in the PDB archive December 30th 2015)  
Refmac : 5.8.0135  
CCP4 : 6.5.0  
Ideal geometry (proteins) : Engh & Huber (2001)  
Ideal geometry (DNA, RNA) : Parkinson et al. (1996)  
Validation Pipeline (wwPDB-VP) : trunk26865

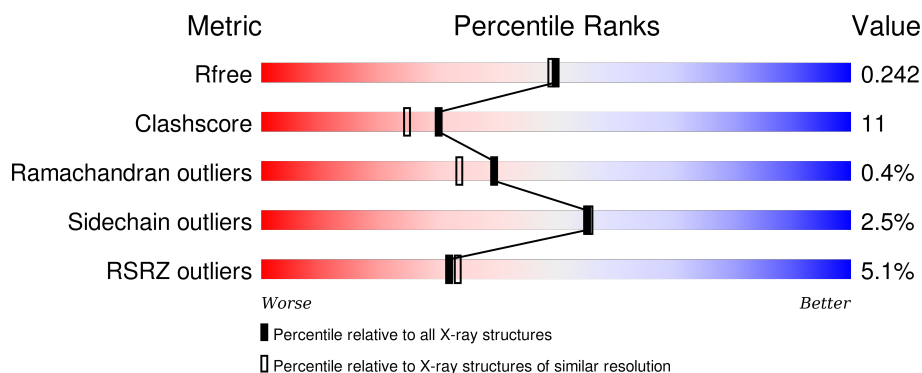
# 1 Overall quality at a glance ⓘ

The following experimental techniques were used to determine the structure:

## *X-RAY DIFFRACTION*

The reported resolution of this entry is 2.00 Å.

Percentile scores (ranging between 0-100) for global validation metrics of the entry are shown in the following graphic. The table shows the number of entries on which the scores are based.



Metric	Whole archive (#Entries)	Similar resolution (#Entries, resolution range(Å))
$R_{free}$	91344	6249 (2.00-2.00)
Clashscore	102246	7340 (2.00-2.00)
Ramachandran outliers	100387	7248 (2.00-2.00)
Sidechain outliers	100360	7247 (2.00-2.00)
RSRZ outliers	91569	6262 (2.00-2.00)

The table below summarises the geometric issues observed across the polymeric chains and their fit to the electron density. The red, orange, yellow and green segments on the lower bar indicate the fraction of residues that contain outliers for  $\geq 3$ , 2, 1 and 0 types of geometric quality criteria. A grey segment represents the fraction of residues that are not modelled. The numeric value for each fraction is indicated below the corresponding segment, with a dot representing fractions  $\leq 5\%$ . The upper red bar (where present) indicates the fraction of residues that have poor fit to the electron density. The numeric value is given above the bar.

Mol	Chain	Length	Quality of chain
1	A	1057	<div> <div>8%</div> <div>75%</div> <div>21%</div> <div>..</div> </div>
1	B	1057	<div> <div>2%</div> <div>80%</div> <div>16%</div> <div>..</div> </div>
1	C	1057	<div> <div>2%</div> <div>78%</div> <div>19%</div> <div>..</div> </div>
2	D	169	<div> <div>%</div> <div>84%</div> <div>7%</div> <div>8%</div> </div>
2	E	169	<div> <div>28%</div> <div>69%</div> <div>20%</div> <div>10%</div> </div>

The following table lists non-polymeric compounds, carbohydrate monomers and non-standard residues in protein, DNA, RNA chains that are outliers for geometric or electron-density-fit criteria:

Mol	Type	Chain	Res	Chirality	Geometry	Clashes	Electron density
3	LMT	A	1101	-	-	-	X

## 2 Entry composition

There are 5 unique types of molecules in this entry. The entry contains 28451 atoms, of which 27 are hydrogens and 0 are deuteriums.

In the tables below, the ZeroOcc column contains the number of atoms modelled with zero occupancy, the AltConf column contains the number of residues with at least one atom in alternate conformation and the Trace column contains the number of residues modelled with at most 2 atoms.

- Molecule 1 is a protein called Multidrug efflux pump subunit AcrB.

Mol	Chain	Residues	Atoms					ZeroOcc	AltConf	Trace
1	A	1044	Total	C	N	O	S	0	0	0
			7911	5088	1305	1474	44			
1	B	1033	Total	C	N	O	S	0	0	0
			7845	5049	1294	1458	44			
1	C	1033	Total	C	N	O	S	0	0	0
			7845	5049	1294	1458	44			

There are 27 discrepancies between the modelled and reference sequences:

Chain	Residue	Modelled	Actual	Comment	Reference
A	940	ALA	LYS	engineered mutation	UNP P31224
A	1050	LEU	-	expression tag	UNP P31224
A	1051	GLU	-	expression tag	UNP P31224
A	1052	HIS	-	expression tag	UNP P31224
A	1053	HIS	-	expression tag	UNP P31224
A	1054	HIS	-	expression tag	UNP P31224
A	1055	HIS	-	expression tag	UNP P31224
A	1056	HIS	-	expression tag	UNP P31224
A	1057	HIS	-	expression tag	UNP P31224
B	940	ALA	LYS	engineered mutation	UNP P31224
B	1050	LEU	-	expression tag	UNP P31224
B	1051	GLU	-	expression tag	UNP P31224
B	1052	HIS	-	expression tag	UNP P31224
B	1053	HIS	-	expression tag	UNP P31224
B	1054	HIS	-	expression tag	UNP P31224
B	1055	HIS	-	expression tag	UNP P31224
B	1056	HIS	-	expression tag	UNP P31224
B	1057	HIS	-	expression tag	UNP P31224
C	940	ALA	LYS	engineered mutation	UNP P31224
C	1050	LEU	-	expression tag	UNP P31224
C	1051	GLU	-	expression tag	UNP P31224
C	1052	HIS	-	expression tag	UNP P31224
C	1053	HIS	-	expression tag	UNP P31224

*Continued on next page...*

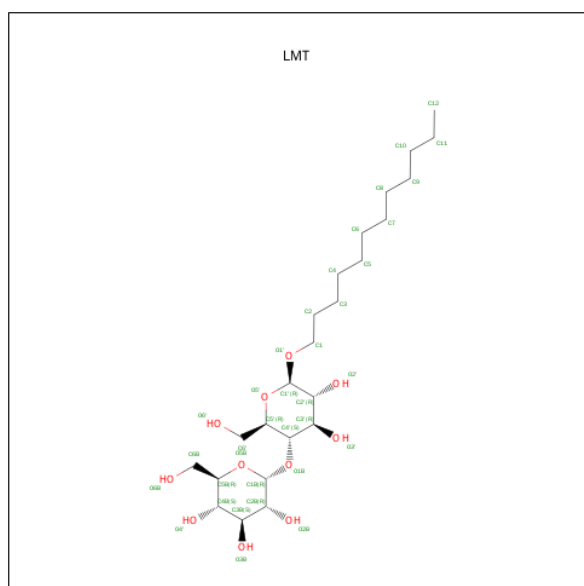
Continued from previous page...

Chain	Residue	Modelled	Actual	Comment	Reference
C	1054	HIS	-	expression tag	UNP P31224
C	1055	HIS	-	expression tag	UNP P31224
C	1056	HIS	-	expression tag	UNP P31224
C	1057	HIS	-	expression tag	UNP P31224

- Molecule 2 is a protein called DARPin.

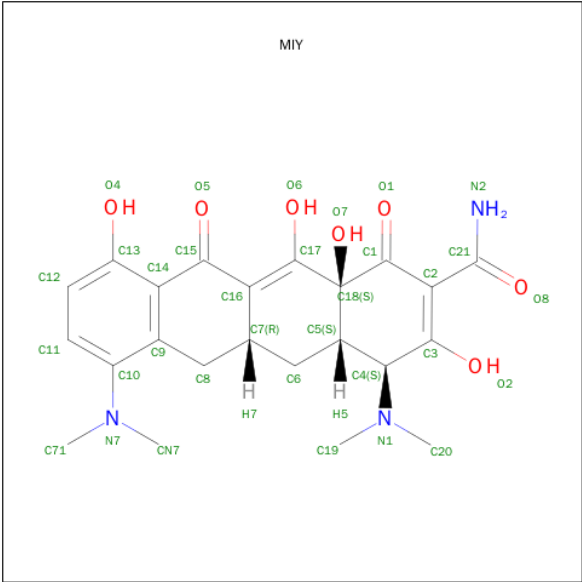
Mol	Chain	Residues	Atoms					ZeroOcc	AltConf	Trace
2	D	156	Total	C	N	O	S	0	0	0
			1177	741	206	229	1			
2	E	152	Total	C	N	O	S	0	0	0
			1151	726	202	222	1			

- Molecule 3 is DODECYL-BETA-D-MALTOSE (three-letter code: LMT) (formula:  $C_{24}H_{46}O_{11}$ ).



Mol	Chain	Residues	Atoms			ZeroOcc	AltConf
3	A	1	Total	C	O	0	0
			35	24	11		
3	B	1	Total	C	O	0	0
			35	24	11		
3	C	1	Total	C	O	0	0
			35	24	11		

- Molecule 4 is (4S,4AS,5AR,12AS)-4,7-BIS(DIMETHYLAMINO)-3,10,12,12A-TETRAHYDROXY-1,11-DIOXO-1,4,4A,5,5A,6,11,12A-OCTAHYDROTETRACENE-2-CARBOXAMIDE (three-letter code: MIY) (formula:  $C_{23}H_{27}N_3O_7$ ).

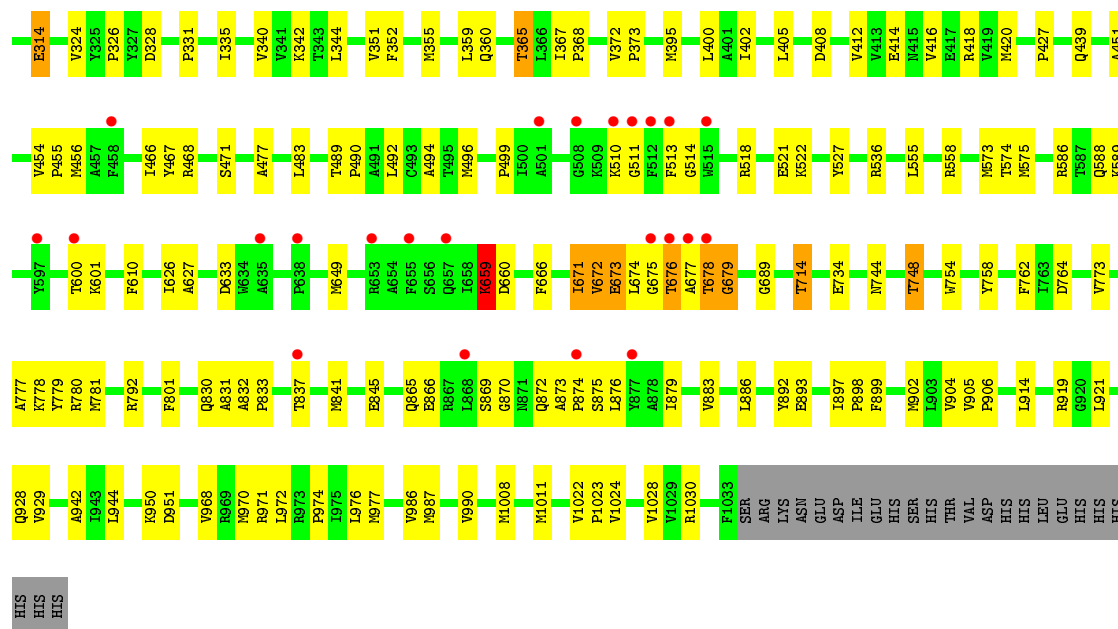


Mol	Chain	Residues	Atoms					ZeroOcc	AltConf
4	B	1	Total	C	H	N	O	0	0
			60	23	27	3	7		

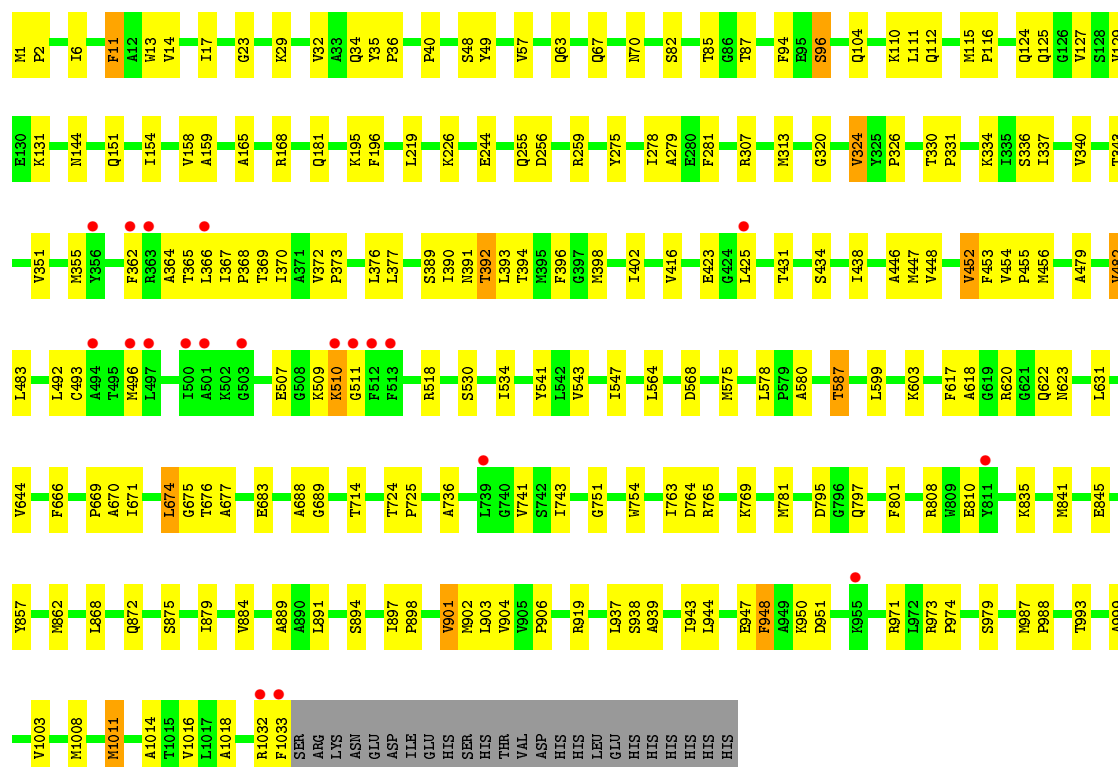
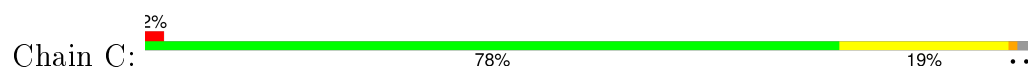
- Molecule 5 is water.

Mol	Chain	Residues	Atoms		ZeroOcc	AltConf
5	A	693	Total	O	0	0
			693	693		
5	B	723	Total	O	0	0
			723	723		
5	C	749	Total	O	0	0
			749	749		
5	D	112	Total	O	0	0
			112	112		
5	E	80	Total	O	0	0
			80	80		

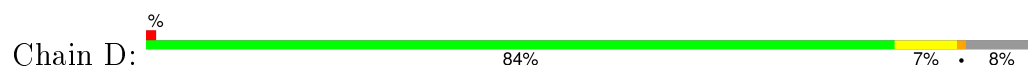




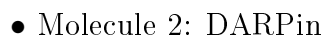
• Molecule 1: Multidrug efflux pump subunit AcrB



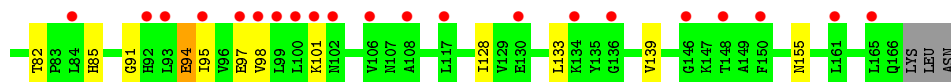
• Molecule 2: DARPin







MET	ARG	GLY	SER	HIS	HIS	HIS	HIS	HIS	GLY	SER	ASP	LEU	G15	K16	E20	A21	A22	G25	D27	D28	E29	V30	R31	I32	I33	R34	A35	N36	G37	V40	R41	A42	A43	D44	V45	F50	L51	A54	L60	E61	I62	V63	E64	V65	L66	K67	N69	G70	V73
-----	-----	-----	-----	-----	-----	-----	-----	-----	-----	-----	-----	-----	-----	-----	-----	-----	-----	-----	-----	-----	-----	-----	-----	-----	-----	-----	-----	-----	-----	-----	-----	-----	-----	-----	-----	-----	-----	-----	-----	-----	-----	-----	-----	-----	-----	-----	-----	-----	-----



## 4 Data and refinement statistics

Property	Value	Source
Space group	P 21 21 21	Depositor
Cell constants a, b, c, $\alpha$ , $\beta$ , $\gamma$	145.91Å 162.32Å 245.81Å 90.00° 90.00° 90.00°	Depositor
Resolution (Å)	48.99 – 2.00 48.99 – 2.00	Depositor EDS
% Data completeness (in resolution range)	89.4 (48.99-2.00) 89.4 (48.99-2.00)	Depositor EDS
$R_{merge}$	(Not available)	Depositor
$R_{sym}$	(Not available)	Depositor
$\langle I/\sigma(I) \rangle$ <sup>1</sup>	1.36 (at 2.00Å)	Xtriage
Refinement program	PHENIX (phenix.refine: 1.9_1692)	Depositor
R, $R_{free}$	0.194 , 0.237 0.203 , 0.242	Depositor DCC
$R_{free}$ test set	17469 reflections (5.26%)	DCC
Wilson B-factor (Å <sup>2</sup> )	27.9	Xtriage
Anisotropy	0.459	Xtriage
Bulk solvent $k_{sol}$ (e/Å <sup>3</sup> ), $B_{sol}$ (Å <sup>2</sup> )	0.36 , 69.9	EDS
Estimated twinning fraction	No twinning to report.	Xtriage
L-test for twinning <sup>2</sup>	$\langle  L  \rangle = 0.48$ , $\langle L^2 \rangle = 0.31$	Xtriage
Outliers	1 of 349404 reflections (0.000%)	Xtriage
$F_o, F_c$ correlation	0.95	EDS
Total number of atoms	28451	wwPDB-VP
Average B, all atoms (Å <sup>2</sup> )	41.0	wwPDB-VP

Xtriage's analysis on translational NCS is as follows: *The largest off-origin peak in the Patterson function is 1.82% of the height of the origin peak. No significant pseudotranslation is detected.*

<sup>1</sup>Intensities estimated from amplitudes.

<sup>2</sup>Theoretical values of  $\langle |L| \rangle$ ,  $\langle L^2 \rangle$  for acentric reflections are 0.5, 0.375 respectively for untwinned datasets, and 0.333, 0.2 for perfectly twinned datasets.

## 5 Model quality

### 5.1 Standard geometry

Bond lengths and bond angles in the following residue types are not validated in this section: MIY, LMT

The Z score for a bond length (or angle) is the number of standard deviations the observed value is removed from the expected value. A bond length (or angle) with  $|Z| > 5$  is considered an outlier worth inspection. RMSZ is the root-mean-square of all Z scores of the bond lengths (or angles).

Mol	Chain	Bond lengths		Bond angles	
		RMSZ	$\# Z  > 5$	RMSZ	$\# Z  > 5$
1	A	0.38	0/8061	0.51	1/10950 (0.0%)
1	B	0.39	0/7995	0.53	0/10859
1	C	0.41	0/7995	0.54	0/10859
2	D	0.37	0/1196	0.50	0/1626
2	E	0.30	0/1170	0.45	0/1591
All	All	0.39	0/26417	0.53	1/35885 (0.0%)

Chiral center outliers are detected by calculating the chiral volume of a chiral center and verifying if the center is modelled as a planar moiety or with the opposite hand. A planarity outlier is detected by checking planarity of atoms in a peptide group, atoms in a mainchain group or atoms of a sidechain that are expected to be planar.

Mol	Chain	#Chirality outliers	#Planarity outliers
1	B	0	1

There are no bond length outliers.

All (1) bond angle outliers are listed below:

Mol	Chain	Res	Type	Atoms	Z	Observed(°)	Ideal(°)
1	A	185	ARG	NE-CZ-NH2	-5.96	117.32	120.30

There are no chirality outliers.

All (1) planarity outliers are listed below:

Mol	Chain	Res	Type	Group
1	B	689	GLY	Peptide

## 5.2 Too-close contacts ⓘ

In the following table, the Non-H and H(model) columns list the number of non-hydrogen atoms and hydrogen atoms in the chain respectively. The H(added) column lists the number of hydrogen atoms added and optimized by MolProbity. The Clashes column lists the number of clashes within the asymmetric unit, whereas Symm-Clashes lists symmetry related clashes.

Mol	Chain	Non-H	H(model)	H(added)	Clashes	Symm-Clashes
1	A	7911	0	8033	220	0
1	B	7845	0	7993	163	0
1	C	7845	0	7993	176	0
2	D	1177	0	1159	9	0
2	E	1151	0	1136	28	0
3	A	35	0	46	3	0
3	B	35	0	46	3	0
3	C	35	0	46	2	0
4	B	33	27	25	0	0
5	A	693	0	0	24	0
5	B	723	0	0	27	0
5	C	749	0	0	32	0
5	D	112	0	0	2	0
5	E	80	0	0	5	0
All	All	28424	27	26477	583	0

The all-atom clashscore is defined as the number of clashes found per 1000 atoms (including hydrogen atoms). The all-atom clashscore for this structure is 11.

All (583) close contacts within the same asymmetric unit are listed below, sorted by their clash magnitude.

Atom-1	Atom-2	Interatomic distance (Å)	Clash overlap (Å)
1:B:678:THR:HG23	1:B:837:THR:HG22	1.28	1.14
1:B:108:GLN:HG3	1:C:112:GLN:HG3	1.38	1.05
1:A:83:ASP:OD1	1:A:85:THR:HG22	1.65	0.96
1:B:414:GLU:HG3	1:B:977:MET:HE1	1.45	0.95
1:C:575:MET:HE2	1:C:666:PHE:HZ	1.31	0.94
1:C:493:CYS:SG	5:C:1864:HOH:O	2.27	0.92
1:B:974:PRO:HA	1:B:977:MET:HE2	1.49	0.92
1:A:375:VAL:HG11	1:A:405:LEU:HD22	1.52	0.91
1:B:678:THR:HG21	1:B:831:ALA:H	1.39	0.88
1:B:514:GLY:O	5:B:1697:HOH:O	1.93	0.86
1:A:509:LYS:HE3	1:A:518:ARG:HH22	1.39	0.85
1:C:70:ASN:O	1:C:110:LYS:NZ	2.09	0.85
1:C:510:LYS:HG3	1:C:511:GLY:H	1.40	0.85

*Continued on next page...*

*Continued from previous page...*

Atom-1	Atom-2	Interatomic distance (Å)	Clash overlap (Å)
1:A:919:ARG:HH11	1:A:1005:THR:HG21	1.42	0.83
1:B:968:VAL:HG21	1:B:1023:PRO:HG3	1.58	0.83
1:A:57:VAL:CG1	1:A:88:VAL:HG22	2.09	0.82
1:A:509:LYS:HB2	1:A:514:GLY:HA3	1.60	0.81
1:A:983:ILE:HG23	1:A:1008:MET:HG3	1.61	0.80
1:C:391:ASN:H	1:C:394:THR:HG22	1.45	0.80
1:A:372:VAL:HB	1:A:373:PRO:HD3	1.65	0.79
1:A:968:VAL:HG21	1:A:1023:PRO:HG3	1.64	0.79
1:B:420:MET:CE	1:B:499:PRO:HA	2.12	0.79
2:E:30:VAL:O	2:E:34:MET:HG2	1.83	0.79
1:B:518:ARG:N	5:B:1697:HOH:O	2.04	0.78
1:B:1:MET:N	5:B:1399:HOH:O	2.11	0.78
1:B:420:MET:HE1	1:B:499:PRO:HA	1.65	0.77
1:C:507:GLU:HG2	1:C:518:ARG:HG2	1.67	0.77
1:B:414:GLU:HG3	1:B:977:MET:CE	2.14	0.76
3:B:1101:LMT:H6E	3:B:1101:LMT:H5B	1.66	0.76
1:B:420:MET:HE1	1:B:427:PRO:HG3	1.66	0.76
1:A:509:LYS:HG3	1:A:514:GLY:CA	2.16	0.76
1:A:527:TYR:CE2	1:A:968:VAL:HG13	2.21	0.76
1:A:509:LYS:CB	1:A:514:GLY:HA3	2.16	0.76
1:B:744:ASN:O	1:B:748:THR:HG23	1.86	0.75
1:C:1:MET:N	5:C:1352:HOH:O	2.19	0.75
1:A:32:VAL:HG21	3:A:1101:LMT:H11	1.68	0.74
1:A:509:LYS:CE	1:A:518:ARG:HH22	2.01	0.74
1:B:1011:MET:SD	5:B:1385:HOH:O	2.44	0.73
1:C:372:VAL:HG22	1:C:373:PRO:HD3	1.69	0.73
1:C:168:ARG:NH1	5:C:1937:HOH:O	2.20	0.73
1:C:578:LEU:HD22	1:C:587:THR:HG22	1.69	0.73
1:A:987:MET:HB3	1:A:988:PRO:HD3	1.70	0.73
1:C:587:THR:HG21	1:C:623:ASN:HA	1.70	0.73
1:A:866:GLU:O	1:A:869:SER:N	2.18	0.72
1:C:367:ILE:HD13	5:C:1864:HOH:O	1.89	0.72
1:C:1033:PHE:O	5:C:1786:HOH:O	2.08	0.72
1:C:29:LYS:NZ	5:C:1928:HOH:O	2.23	0.72
1:C:376:LEU:HD11	1:C:402:ILE:HD11	1.72	0.71
1:B:974:PRO:HA	1:B:977:MET:CE	2.20	0.71
1:C:324:VAL:HG12	1:C:326:PRO:HD3	1.73	0.71
1:C:979:SER:HA	1:C:1011:MET:CE	2.21	0.71
1:A:355:MET:HE2	1:A:355:MET:HA	1.73	0.71
1:A:586:ARG:HB3	5:A:1371:HOH:O	1.90	0.70
1:C:259:ARG:NH2	2:E:155:ASN:OD1	2.25	0.70

*Continued on next page...*

*Continued from previous page...*

Atom-1	Atom-2	Interatomic distance (Å)	Clash overlap (Å)
1:C:70:ASN:HB3	5:C:1559:HOH:O	1.92	0.70
1:B:527:TYR:CE2	1:B:968:VAL:HG13	2.26	0.69
1:B:202:ASP:OD2	1:B:792:ARG:NH2	2.24	0.69
1:A:1038:GLU:HG2	1:A:1039:ASP:H	1.57	0.69
1:C:937:LEU:HD13	1:C:1011:MET:SD	2.33	0.69
1:B:987:MET:HA	1:B:1008:MET:HE1	1.74	0.69
1:C:671:ILE:HG13	1:C:862:MET:HE3	1.75	0.69
1:C:448:VAL:CG2	1:C:884:VAL:HG13	2.23	0.69
1:A:461:GLY:HA3	1:A:868:LEU:HD21	1.73	0.68
1:C:391:ASN:H	1:C:394:THR:CG2	2.07	0.68
1:A:568:ASP:OD2	1:A:637:ARG:NH2	2.25	0.68
1:A:509:LYS:HD3	1:A:511:GLY:O	1.94	0.68
1:B:510:LYS:HG3	1:B:511:GLY:N	2.09	0.68
1:A:414:GLU:CD	1:A:974:PRO:HG3	2.13	0.68
2:E:15:GLY:N	5:E:221:HOH:O	2.25	0.68
1:C:423:GLU:HB2	1:C:425:LEU:HD13	1.76	0.68
1:B:468:ARG:NH1	5:B:1809:HOH:O	2.22	0.67
1:C:34:GLN:O	1:C:392:THR:HB	1.94	0.67
1:A:509:LYS:HG3	1:A:514:GLY:HA3	1.74	0.67
1:C:32:VAL:HG12	1:C:337:ILE:HD13	1.76	0.67
1:C:979:SER:HA	1:C:1011:MET:HE2	1.77	0.67
1:B:575:MET:CE	1:B:626:ILE:HD11	2.23	0.67
1:A:563:PHE:O	1:A:924:ASP:HB2	1.94	0.67
1:A:60:THR:HG22	1:A:61:VAL:HG23	1.76	0.67
1:B:1:MET:HB3	1:B:2:PRO:HD3	1.77	0.67
1:A:469:GLN:OE1	5:A:1739:HOH:O	2.12	0.67
1:C:104:GLN:HG3	5:C:1834:HOH:O	1.95	0.66
1:B:225:VAL:HG13	1:C:781:MET:HG3	1.78	0.66
1:B:919:ARG:HG2	1:B:919:ARG:HH11	1.61	0.66
1:C:575:MET:HE2	1:C:666:PHE:CZ	2.23	0.66
1:C:111:LEU:HD21	1:C:127:VAL:CG2	2.25	0.66
1:A:1:MET:HB3	1:A:2:PRO:HD3	1.76	0.66
1:C:674:LEU:HD11	1:C:862:MET:SD	2.36	0.65
1:A:536:ARG:NH2	5:A:1465:HOH:O	2.30	0.65
1:A:815:ARG:NH1	5:A:1448:HOH:O	2.29	0.65
1:B:467:TYR:OH	1:B:928:GLN:OE1	2.12	0.65
1:B:108:GLN:CG	1:C:112:GLN:HG3	2.24	0.65
1:A:545:TYR:HB2	1:A:1021:PHE:CE1	2.31	0.64
1:A:509:LYS:CG	1:A:514:GLY:HA3	2.27	0.64
1:A:528:THR:CG2	1:A:969:ARG:HB3	2.27	0.64
1:A:307:ARG:NE	5:A:1496:HOH:O	2.22	0.64

*Continued on next page...*

*Continued from previous page...*

Atom-1	Atom-2	Interatomic distance (Å)	Clash overlap (Å)
1:A:546:LEU:O	1:A:550:VAL:HG23	1.98	0.64
1:C:336:SER:O	1:C:340:VAL:HG23	1.98	0.64
1:A:990:VAL:HG23	1:A:991:ILE:HG23	1.80	0.64
2:E:45:VAL:HG22	5:E:209:HOH:O	1.98	0.64
1:B:324:VAL:HG12	1:B:326:PRO:HD3	1.80	0.64
1:A:527:TYR:HE2	1:A:968:VAL:HG13	1.61	0.63
1:C:151:GLN:NE2	1:C:279:ALA:O	2.31	0.63
1:B:573:MET:HB3	1:B:666:PHE:CE1	2.33	0.63
1:A:401:ALA:O	1:A:405:LEU:HG	1.99	0.63
2:D:25:GLY:HA2	2:D:62:ILE:HD12	1.80	0.63
1:A:367:ILE:HB	1:A:368:PRO:HD3	1.81	0.63
1:B:919:ARG:NE	5:B:1488:HOH:O	2.22	0.62
1:C:448:VAL:HG23	1:C:884:VAL:HG13	1.81	0.62
1:A:568:ASP:OD2	1:A:644:VAL:HG23	1.98	0.62
1:B:778:LYS:HE2	1:B:779:TYR:OH	1.99	0.62
1:C:32:VAL:CG1	1:C:337:ILE:HD13	2.29	0.62
1:A:431:THR:HG21	1:A:494:ALA:HB2	1.82	0.62
1:A:361:ASN:O	1:A:365:THR:HG22	1.99	0.61
1:C:939:ALA:O	1:C:943:ILE:HG12	1.99	0.61
1:C:369:THR:O	1:C:372:VAL:HG13	2.00	0.61
1:B:355:MET:HE3	1:B:359:LEU:HD12	1.81	0.61
1:A:973:ARG:HB3	1:A:974:PRO:HD3	1.82	0.61
1:A:528:THR:HG21	1:A:969:ARG:HB3	1.82	0.61
1:B:536:ARG:NH2	5:B:1202:HOH:O	2.29	0.61
1:A:536:ARG:NH2	5:A:1878:HOH:O	2.33	0.61
1:B:331:PRO:O	1:B:335:ILE:HG12	2.01	0.61
1:B:367:ILE:HB	1:B:368:PRO:HD3	1.82	0.61
1:B:671:ILE:HG22	1:B:673:GLU:OE1	2.01	0.61
1:C:376:LEU:HD11	1:C:402:ILE:CD1	2.30	0.60
1:B:522:LYS:HG3	5:B:1789:HOH:O	2.00	0.60
1:B:575:MET:HE2	1:B:626:ILE:HD11	1.81	0.60
2:E:15:GLY:N	5:E:216:HOH:O	2.33	0.60
1:B:778:LYS:HE2	1:B:779:TYR:CZ	2.37	0.60
1:A:509:LYS:HG3	1:A:514:GLY:N	2.16	0.60
1:C:1032:ARG:NH2	5:C:1935:HOH:O	2.33	0.60
1:A:857:TYR:OH	5:A:1829:HOH:O	2.16	0.60
2:E:44:ASP:HB2	5:E:209:HOH:O	2.01	0.60
1:C:671:ILE:H	1:C:862:MET:HE1	1.66	0.60
1:C:875:SER:O	1:C:879:ILE:HG22	2.01	0.60
1:A:489:THR:HB	1:A:490:PRO:HD3	1.84	0.60
1:B:841:MET:O	1:B:845:GLU:HG3	2.01	0.60

*Continued on next page...*

*Continued from previous page...*

Atom-1	Atom-2	Interatomic distance (Å)	Clash overlap (Å)
1:C:452:VAL:HG13	1:C:884:VAL:HG21	1.82	0.59
1:A:973:ARG:O	1:A:977:MET:HG3	2.02	0.59
1:C:34:GLN:OE1	5:C:1837:HOH:O	2.17	0.59
2:E:34:MET:HE1	2:E:69:ASN:HB3	1.84	0.59
1:A:461:GLY:CA	1:A:868:LEU:HD21	2.32	0.59
1:A:979:SER:OG	1:A:1015:THR:HG21	2.03	0.59
1:B:340:VAL:HG21	1:B:395:MET:HB3	1.85	0.59
1:B:678:THR:HG23	1:B:837:THR:CG2	2.20	0.58
1:A:573:MET:CE	1:A:668:LEU:HD13	2.33	0.58
1:A:13:TRP:CZ2	1:A:492:LEU:HD11	2.38	0.58
1:A:14:VAL:HG13	1:B:886:LEU:HB3	1.86	0.58
1:C:423:GLU:CB	1:C:425:LEU:HD13	2.33	0.58
1:B:456:MET:HE3	1:B:471:SER:HB2	1.86	0.58
1:C:226:LYS:NZ	5:C:1204:HOH:O	2.35	0.58
1:B:314:GLU:OE2	5:B:1308:HOH:O	2.16	0.58
1:A:509:LYS:HG3	1:A:514:GLY:H	1.69	0.58
2:E:26:ARG:O	2:E:30:VAL:HG23	2.03	0.58
1:B:734:GLU:OE1	5:B:1696:HOH:O	2.17	0.58
1:C:389:SER:O	1:C:394:THR:HG21	2.04	0.58
1:C:1:MET:HB3	1:C:2:PRO:HD3	1.84	0.58
1:A:568:ASP:CG	1:A:644:VAL:HG23	2.24	0.58
1:A:987:MET:HE2	1:A:990:VAL:CG2	2.34	0.58
2:E:91:GLY:HA2	2:E:128:ILE:HD12	1.85	0.58
1:C:367:ILE:HG21	5:C:1864:HOH:O	2.04	0.57
1:C:479:ALA:O	1:C:482:VAL:HG23	2.04	0.57
1:A:56:THR:O	1:A:60:THR:HB	2.04	0.57
1:C:40:PRO:HB2	1:C:94:PHE:O	2.05	0.57
1:B:527:TYR:HE2	1:B:968:VAL:HG13	1.68	0.57
1:A:709:HIS:N	1:A:710:PRO:HD3	2.19	0.57
1:A:1038:GLU:HA	5:A:1556:HOH:O	2.03	0.57
1:A:351:VAL:O	1:A:355:MET:HG2	2.05	0.57
1:A:328:ASP:OD1	1:A:330:THR:HB	2.04	0.57
1:A:659:LYS:NZ	5:A:1201:HOH:O	2.20	0.57
1:B:342:LYS:HD2	5:B:1901:HOH:O	2.03	0.57
1:A:39:ALA:HB2	1:A:673:GLU:HG3	1.87	0.57
1:C:392:THR:HG21	5:C:1506:HOH:O	2.04	0.57
1:B:875:SER:O	1:B:879:ILE:HG13	2.04	0.57
1:C:671:ILE:HG13	1:C:862:MET:CE	2.35	0.56
1:B:412:VAL:O	5:B:1380:HOH:O	2.17	0.56
1:A:1038:GLU:C	1:A:1040:ILE:H	2.08	0.56
1:A:399:VAL:HG11	1:A:989:LEU:HD11	1.87	0.56

*Continued on next page...*



*Continued from previous page...*

Atom-1	Atom-2	Interatomic distance (Å)	Clash overlap (Å)
1:A:841:MET:O	1:A:845:GLU:HG3	2.06	0.56
1:C:195:LYS:HE3	1:C:196:PHE:CE2	2.40	0.56
1:B:489:THR:OG1	1:B:490:PRO:HD3	2.05	0.56
1:B:281:PHE:CE2	1:B:324:VAL:HG11	2.40	0.56
1:C:364:ALA:HA	1:C:367:ILE:HD12	1.87	0.56
1:B:420:MET:HE2	1:B:499:PRO:HA	1.88	0.56
1:A:952:LEU:HA	1:A:956:GLU:OE1	2.06	0.56
1:B:919:ARG:HG2	1:B:919:ARG:NH1	2.20	0.56
1:B:869:SER:N	5:B:1618:HOH:O	2.38	0.56
2:D:166:GLN:NE2	5:D:285:HOH:O	2.38	0.55
1:C:454:VAL:HB	1:C:455:PRO:HD3	1.87	0.55
1:B:586:ARG:HD3	5:B:1329:HOH:O	2.05	0.55
1:B:352:PHE:CE2	1:B:365:THR:HG21	2.41	0.55
1:A:482:VAL:O	1:A:486:LEU:HG	2.06	0.55
1:C:765:ARG:NE	5:C:1518:HOH:O	2.39	0.55
1:A:968:VAL:CG2	1:A:1023:PRO:HG3	2.36	0.55
1:C:671:ILE:N	1:C:862:MET:HE1	2.21	0.55
1:C:872:GLN:HG3	5:C:1346:HOH:O	2.06	0.55
1:C:676:THR:OG1	5:C:1334:HOH:O	2.18	0.55
1:A:1038:GLU:CG	1:A:1039:ASP:H	2.20	0.55
1:B:678:THR:CG2	1:B:831:ALA:H	2.16	0.55
1:C:372:VAL:HG22	1:C:373:PRO:CD	2.38	0.54
1:B:372:VAL:HB	1:B:373:PRO:HD3	1.88	0.54
1:C:587:THR:CG2	1:C:623:ASN:HA	2.35	0.54
1:A:980:LEU:O	1:A:984:LEU:HB2	2.06	0.54
1:C:714:THR:HG22	5:C:1378:HOH:O	2.08	0.54
1:C:452:VAL:HG13	1:C:884:VAL:CG2	2.38	0.54
1:B:247:GLY:HA2	1:B:268:ILE:HD12	1.90	0.54
1:B:659:LYS:N	1:B:659:LYS:HD3	2.21	0.54
1:A:537:SER:O	1:A:538:THR:HB	2.08	0.54
1:C:971:ARG:O	1:C:974:PRO:HD2	2.07	0.54
1:B:678:THR:HB	1:B:830:GLN:HB2	1.90	0.54
1:A:57:VAL:HG12	1:A:88:VAL:HG22	1.89	0.54
1:C:370:ILE:O	1:C:373:PRO:HD2	2.08	0.54
1:C:307:ARG:NH1	5:C:1377:HOH:O	2.31	0.54
1:C:689:GLY:N	5:C:1414:HOH:O	2.20	0.54
1:A:676:THR:HG22	1:A:679:GLY:H	1.71	0.54
1:A:641:GLU:O	1:A:650:ARG:NH2	2.27	0.54
1:A:575:MET:HB2	1:A:617:PHE:CE1	2.43	0.54
1:B:678:THR:HG22	1:B:679:GLY:N	2.21	0.53
1:B:420:MET:HE1	1:B:427:PRO:CG	2.36	0.53

*Continued on next page...*

*Continued from previous page...*

Atom-1	Atom-2	Interatomic distance (Å)	Clash overlap (Å)
1:A:672:VAL:O	1:A:675:GLY:N	2.31	0.53
1:A:905:VAL:HB	1:A:906:PRO:HD3	1.90	0.53
1:C:999:ALA:O	1:C:1003:VAL:HG23	2.08	0.53
1:C:743:ILE:HD12	5:C:1920:HOH:O	2.07	0.53
1:C:943:ILE:O	1:C:947:GLU:HB3	2.07	0.53
1:C:901:VAL:O	1:C:904:VAL:HG12	2.09	0.53
1:C:897:ILE:HD11	1:C:950:LYS:HD3	1.89	0.53
1:B:202:ASP:CG	1:B:792:ARG:HH22	2.11	0.53
1:A:754:TRP:HZ3	1:C:219:LEU:HD23	1.73	0.53
1:C:447:MET:HE3	1:C:891:LEU:HD22	1.89	0.53
1:C:111:LEU:HD21	1:C:127:VAL:HG21	1.88	0.53
1:A:699:ARG:O	1:A:703:LEU:HG	2.09	0.53
1:A:919:ARG:HH11	1:A:1005:THR:CG2	2.17	0.53
1:B:281:PHE:CZ	1:B:324:VAL:HG11	2.44	0.53
1:C:971:ARG:C	1:C:974:PRO:HD2	2.29	0.53
1:A:862:MET:HE2	5:A:1339:HOH:O	2.09	0.52
1:A:33:ALA:O	1:A:391:ASN:HA	2.09	0.52
1:A:617:PHE:CE2	1:A:666:PHE:HZ	2.27	0.52
1:B:352:PHE:CE2	1:B:365:THR:CG2	2.93	0.52
2:E:34:MET:HE1	2:E:69:ASN:CB	2.39	0.52
1:B:659:LYS:H	1:B:659:LYS:CD	2.22	0.52
1:C:96:SER:O	5:C:1640:HOH:O	2.19	0.52
1:A:49:TYR:HE2	1:A:60:THR:HG21	1.75	0.52
1:A:1:MET:N	5:A:1440:HOH:O	2.42	0.52
1:C:897:ILE:HB	1:C:898:PRO:HD3	1.89	0.52
1:B:418:ARG:HD2	1:B:970:MET:HG2	1.91	0.52
1:B:944:LEU:HB3	1:B:971:ARG:HD2	1.92	0.52
1:C:48:SER:HB3	1:C:125:GLN:HG2	1.92	0.52
1:A:987:MET:HA	1:A:987:MET:CE	2.40	0.52
1:A:1027:VAL:O	1:A:1031:ARG:HG3	2.10	0.52
1:A:431:THR:O	1:A:435:MET:HG2	2.10	0.52
1:A:355:MET:HE2	1:A:355:MET:CA	2.40	0.51
1:A:365:THR:O	1:A:368:PRO:HD2	2.10	0.51
1:C:510:LYS:CG	1:C:511:GLY:H	2.15	0.51
1:A:263:ARG:NH2	2:D:155:ASN:O	2.41	0.51
1:C:362:PHE:CE2	1:C:366:LEU:HD22	2.45	0.51
1:B:38:ILE:HD13	1:B:466:ILE:CG1	2.40	0.51
1:C:631:LEU:HD11	1:C:644:VAL:HG22	1.91	0.51
1:A:70:ASN:O	1:A:110:LYS:HE3	2.10	0.51
1:C:351:VAL:O	1:C:355:MET:HG3	2.11	0.51
1:C:725:PRO:HD2	5:C:1353:HOH:O	2.09	0.51

*Continued on next page...*

*Continued from previous page...*

Atom-1	Atom-2	Interatomic distance (Å)	Clash overlap (Å)
1:B:2:PRO:O	1:B:6:ILE:HG13	2.09	0.51
1:A:2:PRO:O	1:A:6:ILE:HG13	2.10	0.51
1:A:488:LEU:O	1:A:492:LEU:HB2	2.11	0.51
1:C:688:ALA:O	5:C:1376:HOH:O	2.19	0.51
1:A:195:LYS:NZ	5:A:1396:HOH:O	2.32	0.51
1:B:762:PHE:CE2	1:B:764:ASP:HB2	2.46	0.51
1:A:987:MET:HE2	1:A:990:VAL:HG21	1.92	0.51
1:C:446:ALA:HB2	1:C:482:VAL:HG13	1.93	0.51
1:A:426:PRO:HB2	1:A:429:GLU:OE1	2.12	0.51
1:C:85:THR:OG1	1:C:87:THR:HG23	2.11	0.51
1:B:678:THR:HG21	1:B:831:ALA:N	2.19	0.50
1:A:509:LYS:CG	1:A:510:LYS:N	2.73	0.50
1:A:792:ARG:NH1	5:A:1808:HOH:O	2.44	0.50
1:B:344:LEU:HD23	1:B:402:ILE:HD11	1.92	0.50
1:B:492:LEU:O	1:B:496:MET:HB2	2.11	0.50
1:A:712:MET:SD	1:A:835:LYS:HE2	2.51	0.50
1:A:971:ARG:HD2	5:A:1314:HOH:O	2.10	0.50
1:A:708:LYS:C	1:A:710:PRO:HD3	2.32	0.50
2:E:25:GLY:HA2	2:E:62:ILE:HD12	1.94	0.50
1:C:13:TRP:O	1:C:17:ILE:HG13	2.12	0.50
1:A:873:ALA:HB3	1:A:874:PRO:HD3	1.94	0.50
1:A:32:VAL:CG2	3:A:1101:LMT:H11	2.40	0.50
1:A:942:ALA:O	1:A:946:VAL:HG13	2.12	0.50
1:C:587:THR:HG21	1:C:622:GLN:O	2.12	0.50
1:C:618:ALA:N	5:C:1451:HOH:O	2.37	0.50
3:B:1101:LMT:H6E	3:B:1101:LMT:C5B	2.39	0.50
1:A:428:LYS:NZ	1:A:428:LYS:HB2	2.27	0.50
1:A:836:SER:OG	1:A:839:GLU:HG3	2.12	0.50
1:C:808:ARG:NH1	1:C:810:GLU:OE2	2.45	0.50
1:C:70:ASN:HB2	5:C:1824:HOH:O	2.11	0.49
1:B:355:MET:CE	1:B:359:LEU:HD12	2.42	0.49
1:B:873:ALA:N	1:B:874:PRO:HD2	2.27	0.49
1:C:509:LYS:HG2	1:C:510:LYS:HE3	1.93	0.49
1:C:392:THR:HG23	1:C:396:PHE:CE2	2.47	0.49
1:A:124:GLN:O	1:B:117:LEU:HD21	2.13	0.49
1:C:580:ALA:HB1	1:C:724:THR:HG22	1.93	0.49
1:C:367:ILE:HB	1:C:368:PRO:HD3	1.94	0.49
1:C:281:PHE:CE1	1:C:324:VAL:HG11	2.47	0.49
1:B:676:THR:HG22	1:B:677:ALA:H	1.78	0.49
1:A:59:ASP:HB3	1:C:763:ILE:HD11	1.94	0.49
1:B:510:LYS:HG3	1:B:511:GLY:H	1.75	0.49

*Continued on next page...*

*Continued from previous page...*

Atom-1	Atom-2	Interatomic distance (Å)	Clash overlap (Å)
1:A:792:ARG:NH1	5:A:1725:HOH:O	2.43	0.49
1:C:534:ILE:HG12	1:C:541:TYR:CZ	2.48	0.49
1:B:456:MET:HG2	1:B:467:TYR:HB3	1.94	0.49
1:C:898:PRO:O	1:C:902:MET:HG2	2.12	0.49
1:B:673:GLU:O	1:B:674:LEU:CB	2.60	0.49
1:C:904:VAL:HG13	1:C:938:SER:HB3	1.94	0.49
1:C:256:ASP:OD1	1:C:256:ASP:N	2.45	0.49
1:A:534:ILE:HB	1:A:541:TYR:CE1	2.48	0.48
1:B:558:ARG:NH1	1:B:558:ARG:HG3	2.28	0.48
1:A:1022:VAL:HB	1:A:1023:PRO:HD3	1.94	0.48
1:A:754:TRP:CZ3	1:C:219:LEU:HD23	2.48	0.48
2:E:16:LYS:NZ	2:E:20:GLU:OE1	2.45	0.48
1:B:671:ILE:O	1:B:672:VAL:HB	2.13	0.48
1:C:57:VAL:HG13	1:C:82:SER:HB3	1.95	0.48
1:B:990:VAL:O	5:B:1488:HOH:O	2.20	0.48
1:C:897:ILE:O	1:C:901:VAL:HG13	2.14	0.48
1:A:344:LEU:O	1:A:348:ILE:HG13	2.12	0.48
1:A:23:GLY:HA3	1:A:377:LEU:O	2.12	0.48
1:A:39:ALA:HB2	1:A:673:GLU:CG	2.42	0.48
1:B:897:ILE:N	1:B:898:PRO:CD	2.77	0.48
1:C:392:THR:HG22	1:C:393:LEU:HD23	1.94	0.48
1:B:673:GLU:C	1:B:675:GLY:H	2.16	0.48
1:C:979:SER:HA	1:C:1011:MET:HE3	1.95	0.48
1:B:600:THR:HG22	1:B:601:LYS:HD3	1.94	0.48
1:C:835:LYS:NZ	5:C:1918:HOH:O	2.45	0.48
1:B:555:LEU:HD11	1:B:914:LEU:HD23	1.96	0.48
1:C:543:VAL:O	1:C:547:ILE:HG13	2.14	0.48
2:E:91:GLY:HA2	2:E:128:ILE:CD1	2.44	0.48
1:B:714:THR:HG22	5:B:1273:HOH:O	2.13	0.48
1:C:124:GLN:HB3	5:C:1564:HOH:O	2.14	0.48
1:A:1001:ASN:O	1:A:1005:THR:HG23	2.13	0.47
1:A:414:GLU:OE2	1:A:974:PRO:HG3	2.14	0.47
1:B:873:ALA:N	1:B:874:PRO:CD	2.77	0.47
1:C:365:THR:O	1:C:368:PRO:HD2	2.14	0.47
1:A:428:LYS:O	1:A:431:THR:HG22	2.13	0.47
1:A:898:PRO:O	1:A:902:MET:HG3	2.14	0.47
1:A:9:PRO:HG3	1:A:495:THR:HG21	1.96	0.47
1:C:23:GLY:HA3	1:C:377:LEU:O	2.15	0.47
1:A:483:LEU:HD23	1:A:487:ILE:HD12	1.96	0.47
1:A:509:LYS:HD2	1:A:510:LYS:H	1.79	0.47
1:B:892:TYR:O	1:B:950:LYS:HE3	2.14	0.47

*Continued on next page...*

*Continued from previous page...*

Atom-1	Atom-2	Interatomic distance (Å)	Clash overlap (Å)
1:A:517:ASN:O	1:A:521:GLU:HG2	2.14	0.47
1:B:574:THR:HB	1:B:627:ALA:HB3	1.96	0.47
1:C:453:PHE:HD1	1:C:456:MET:SD	2.38	0.47
1:B:673:GLU:O	1:B:674:LEU:HB2	2.14	0.47
1:A:350:LEU:HD13	1:A:984:LEU:O	2.15	0.47
1:A:415:ASN:ND2	1:A:434:SER:OG	2.23	0.47
1:A:792:ARG:NE	5:A:1349:HOH:O	2.23	0.47
2:D:115:THR:HB	2:D:116:PRO:HD2	1.97	0.47
1:A:393:LEU:HD11	1:A:466:ILE:HG13	1.96	0.47
1:B:905:VAL:HB	1:B:906:PRO:HD3	1.96	0.47
1:B:186:ILE:HB	1:B:773:VAL:HG12	1.96	0.47
1:C:416:VAL:HG22	1:C:431:THR:HA	1.97	0.47
1:B:38:ILE:HD13	1:B:466:ILE:HG12	1.96	0.47
1:B:588:GLN:NE2	5:B:1627:HOH:O	2.47	0.47
1:B:575:MET:HA	1:B:626:ILE:HD13	1.96	0.47
1:A:492:LEU:O	1:A:496:MET:HB2	2.15	0.47
1:C:987:MET:SD	1:C:1008:MET:HE1	2.55	0.47
2:E:28:ASP:O	2:E:32:ILE:HG12	2.14	0.47
1:A:987:MET:CE	1:A:990:VAL:HG21	2.45	0.46
1:B:489:THR:HG21	5:B:1259:HOH:O	2.15	0.46
1:B:400:LEU:HD13	1:B:929:VAL:CG1	2.45	0.46
1:B:673:GLU:CD	1:B:673:GLU:H	2.16	0.46
1:C:447:MET:HE1	1:C:891:LEU:HD13	1.97	0.46
1:A:1016:VAL:O	1:A:1019:ILE:HG22	2.14	0.46
1:A:968:VAL:HG21	1:A:1023:PRO:CG	2.40	0.46
1:C:670:ALA:HB3	1:C:862:MET:HE1	1.95	0.46
1:B:673:GLU:OE1	1:B:673:GLU:N	2.39	0.46
1:A:694:LYS:HD3	5:A:1680:HOH:O	2.15	0.46
1:A:631:LEU:HD11	1:A:644:VAL:HG22	1.98	0.46
2:D:61:GLU:HB2	5:D:217:HOH:O	2.15	0.46
1:A:716:VAL:HA	1:A:828:LEU:O	2.15	0.46
2:E:97:GLU:O	2:E:101:LYS:HG3	2.15	0.46
1:C:903:LEU:O	1:C:906:PRO:HD2	2.16	0.46
1:A:868:LEU:HD12	1:A:868:LEU:O	2.15	0.46
1:B:897:ILE:HD13	1:B:950:LYS:HD2	1.97	0.46
1:C:669:PRO:HG3	1:C:675:GLY:O	2.16	0.46
2:D:27:ASP:OD1	2:D:62:ILE:HG13	2.14	0.46
1:B:600:THR:HG22	1:B:601:LYS:N	2.29	0.46
1:A:881:LEU:HD23	1:A:881:LEU:HA	1.63	0.46
1:C:795:ASP:OD2	1:C:797:GLN:HG3	2.16	0.46
1:B:527:TYR:CE2	1:B:968:VAL:CG1	2.97	0.46

*Continued on next page...*

*Continued from previous page...*

Atom-1	Atom-2	Interatomic distance (Å)	Clash overlap (Å)
1:A:49:TYR:CE2	1:A:60:THR:HG21	2.50	0.46
1:B:352:PHE:CD2	1:B:365:THR:HG23	2.51	0.46
2:E:133:LEU:HD21	2:E:139:VAL:HG12	1.98	0.46
1:C:1016:VAL:HG12	3:C:1101:LMT:H121	1.97	0.46
1:B:420:MET:HE2	5:B:1532:HOH:O	2.14	0.46
1:A:672:VAL:HG13	1:A:673:GLU:H	1.81	0.46
1:B:893:GLU:O	1:B:893:GLU:HG3	2.16	0.46
1:A:247:GLY:HA2	1:A:268:ILE:CD1	2.46	0.46
1:C:919:ARG:HG2	1:C:919:ARG:O	2.16	0.46
1:A:368:PRO:HA	1:A:409:ALA:HB1	1.98	0.46
1:A:355:MET:HA	1:A:355:MET:CE	2.44	0.45
2:E:60:LEU:HD11	2:E:98:VAL:HG21	1.98	0.45
1:A:509:LYS:CG	1:A:514:GLY:H	2.29	0.45
1:A:479:ALA:O	1:A:482:VAL:HG12	2.17	0.45
1:C:973:ARG:HB3	1:C:974:PRO:HD3	1.97	0.45
1:A:987:MET:HA	1:A:987:MET:HE3	1.98	0.45
1:B:405:LEU:HD21	1:B:477:ALA:HB1	1.96	0.45
1:A:675:GLY:HA3	1:A:862:MET:HB3	1.98	0.45
1:B:972:LEU:O	1:B:976:LEU:HG	2.15	0.45
2:E:21:ALA:CB	2:E:29:GLU:HG2	2.46	0.45
1:C:666:PHE:CE1	1:C:677:ALA:HB2	2.52	0.45
1:B:558:ARG:HH11	1:B:558:ARG:HG3	1.80	0.45
1:C:244:GLU:HB3	5:E:205:HOH:O	2.17	0.45
1:A:886:LEU:HB3	1:C:14:VAL:HG13	1.98	0.45
1:B:408:ASP:O	1:B:412:VAL:HG23	2.17	0.45
1:B:412:VAL:O	1:B:416:VAL:HG23	2.16	0.45
1:B:351:VAL:HG12	5:B:1322:HOH:O	2.16	0.45
1:A:990:VAL:HG12	1:A:1005:THR:HG22	1.99	0.45
1:C:151:GLN:OE1	1:C:278:ILE:HG23	2.17	0.45
1:C:736:ALA:HB1	1:C:741:VAL:HG23	1.99	0.45
1:C:165:ALA:HB3	1:C:313:MET:CE	2.47	0.45
1:A:797:GLN:HG3	5:A:1611:HOH:O	2.16	0.45
2:E:34:MET:CE	2:E:40:VAL:HG12	2.47	0.45
1:A:712:MET:HG2	1:A:843:LEU:HD22	1.99	0.45
1:A:341:VAL:HG21	3:A:1101:LMT:H41	1.98	0.44
1:A:1038:GLU:HG2	1:A:1039:ASP:N	2.28	0.44
1:B:575:MET:HE2	1:B:626:ILE:CD1	2.48	0.44
1:C:736:ALA:HB1	1:C:741:VAL:CG2	2.47	0.44
1:A:276:ASP:O	1:A:614:GLY:HA3	2.17	0.44
1:C:334:LYS:HE3	5:C:1494:HOH:O	2.17	0.44
1:A:509:LYS:HD2	1:A:510:LYS:N	2.31	0.44

*Continued on next page...*

*Continued from previous page...*

Atom-1	Atom-2	Interatomic distance (Å)	Clash overlap (Å)
1:B:521:GLU:OE2	5:B:1841:HOH:O	2.21	0.44
1:B:185:ARG:HD3	1:B:185:ARG:HA	1.76	0.44
1:C:168:ARG:NE	5:C:1830:HOH:O	2.24	0.44
1:A:465:ALA:O	1:A:469:GLN:HG2	2.16	0.44
1:C:131:LYS:NZ	5:C:1594:HOH:O	2.50	0.44
1:A:762:PHE:CE2	1:A:764:ASP:HB2	2.53	0.44
1:B:328:ASP:O	1:B:331:PRO:HD2	2.18	0.44
1:A:881:LEU:HD22	1:A:902:MET:CE	2.46	0.44
1:A:706:ALA:HB3	1:A:716:VAL:HG21	1.98	0.44
1:C:144:ASN:HA	1:C:320:GLY:O	2.18	0.44
1:C:159:ALA:HB1	1:C:181:GLN:HB2	1.99	0.44
1:A:470:PHE:CD2	1:A:929:VAL:HG11	2.52	0.44
1:B:115:MET:HB2	1:B:116:PRO:HD3	1.99	0.44
1:B:216:ALA:O	1:C:751:GLY:HA2	2.17	0.44
1:B:223:PRO:HD3	1:C:275:TYR:CD1	2.52	0.44
1:C:575:MET:CE	1:C:617:PHE:HD2	2.31	0.44
2:E:34:MET:C	2:E:36:ASN:H	2.20	0.44
1:A:911:GLY:HA3	1:A:1013:THR:OG1	2.18	0.44
1:B:536:ARG:NH1	3:B:1101:LMT:O3B	2.49	0.44
1:A:307:ARG:HD3	5:A:1557:HOH:O	2.17	0.44
1:B:899:PHE:HA	1:B:902:MET:HE3	1.99	0.44
1:C:370:ILE:C	1:C:373:PRO:HD2	2.39	0.44
1:A:176:GLN:HB2	5:A:1379:HOH:O	2.17	0.44
1:B:307:ARG:NH2	5:B:1549:HOH:O	2.49	0.44
1:A:991:ILE:HD12	1:A:991:ILE:O	2.18	0.43
1:A:1011:MET:O	1:A:1015:THR:HG23	2.18	0.43
1:A:713:LEU:CD2	1:A:840:ALA:HB1	2.48	0.43
1:B:876:LEU:HD23	1:B:876:LEU:HA	1.74	0.43
1:A:987:MET:HB3	1:A:988:PRO:CD	2.45	0.43
1:C:889:ALA:HA	1:C:894:SER:O	2.18	0.43
1:B:199:THR:HB	1:B:200:PRO:HD2	2.00	0.43
1:A:57:VAL:HG11	1:A:88:VAL:HG22	1.96	0.43
1:A:1023:PRO:O	1:A:1027:VAL:HG22	2.18	0.43
1:A:573:MET:HE1	1:A:668:LEU:HD13	2.00	0.43
1:A:792:ARG:NH2	5:A:1349:HOH:O	2.48	0.43
1:A:9:PRO:HD2	1:B:893:GLU:OE1	2.18	0.43
1:A:728:LYS:HE3	1:A:730:ASP:OD1	2.18	0.43
1:B:133:SER:HB3	5:B:1371:HOH:O	2.17	0.43
1:A:987:MET:O	1:A:990:VAL:HG22	2.19	0.43
1:B:1022:VAL:N	1:B:1023:PRO:CD	2.81	0.43
1:A:958:LYS:HD3	1:A:962:GLU:OE2	2.19	0.43

*Continued on next page...*

*Continued from previous page...*

Atom-1	Atom-2	Interatomic distance (Å)	Clash overlap (Å)
1:B:832:ALA:HB1	1:B:833:PRO:HD2	2.01	0.43
1:C:666:PHE:CD1	1:C:677:ALA:HB2	2.53	0.43
1:A:355:MET:HE3	1:A:410:ILE:HD11	2.00	0.43
1:C:35:TYR:HB3	1:C:36:PRO:HD2	2.01	0.43
1:C:492:LEU:O	1:C:496:MET:HB3	2.18	0.43
2:D:34:MET:CE	2:D:34:MET:HA	2.49	0.43
1:C:11:PHE:O	1:C:11:PHE:HD1	2.02	0.43
1:B:865:GLN:NE2	5:B:1434:HOH:O	2.27	0.43
1:A:508:GLY:O	1:A:509:LYS:HB3	2.19	0.43
1:B:659:LYS:H	1:B:659:LYS:HD3	1.79	0.43
1:B:360:GLN:HG2	1:B:513:PHE:CD1	2.54	0.43
1:A:879:ILE:HG13	1:A:880:SER:N	2.33	0.43
1:A:568:ASP:CG	1:A:637:ARG:HH22	2.21	0.43
1:B:672:VAL:C	1:B:673:GLU:O	2.56	0.43
1:A:492:LEU:HA	1:A:492:LEU:HD12	1.90	0.43
1:A:575:MET:SD	1:A:664:PHE:HE1	2.42	0.43
1:C:343:THR:HG23	1:C:988:PRO:HB2	2.00	0.43
1:A:507:GLU:HG2	1:A:518:ARG:HG2	2.01	0.42
1:A:370:ILE:O	1:A:373:PRO:HD2	2.18	0.42
1:A:583:THR:OG1	1:A:586:ARG:HG3	2.19	0.42
1:C:452:VAL:CG1	1:C:884:VAL:HG21	2.49	0.42
1:C:447:MET:CE	1:C:891:LEU:HD13	2.49	0.42
1:C:575:MET:HG2	1:C:666:PHE:CE2	2.54	0.42
1:C:568:ASP:CG	1:C:644:VAL:HG23	2.40	0.42
1:A:851:LEU:HB3	1:A:852:PRO:CD	2.49	0.42
1:A:859:TRP:HD1	1:A:867:ARG:NH2	2.17	0.42
2:E:31:ARG:NH1	2:E:65:VAL:HG21	2.34	0.42
2:E:21:ALA:HB2	2:E:29:GLU:HG2	2.01	0.42
1:C:1014:ALA:O	1:C:1018:ALA:CB	2.67	0.42
1:B:420:MET:HE1	1:B:427:PRO:CD	2.49	0.42
2:E:94:GLU:O	2:E:98:VAL:HG23	2.19	0.42
1:C:599:LEU:O	1:C:603:LYS:HB3	2.19	0.42
1:A:633:ASP:HB2	5:A:1483:HOH:O	2.19	0.42
2:E:68:LYS:HE3	2:E:68:LYS:HB2	1.85	0.42
1:B:420:MET:HE3	1:B:427:PRO:N	2.35	0.42
1:A:30:LEU:HD21	1:A:384:ALA:HA	2.01	0.42
1:C:2:PRO:O	1:C:6:ILE:HG13	2.20	0.42
1:C:530:SER:OG	3:C:1101:LMT:H11	2.20	0.42
1:C:330:THR:N	1:C:331:PRO:CD	2.83	0.42
1:A:979:SER:O	1:A:983:ILE:HG13	2.19	0.42
2:E:34:MET:HB3	2:E:34:MET:HE2	1.89	0.42

*Continued on next page...*



*Continued from previous page...*

Atom-1	Atom-2	Interatomic distance (Å)	Clash overlap (Å)
1:B:897:ILE:CD1	1:B:950:LYS:HD2	2.49	0.42
1:B:454:VAL:HB	1:B:455:PRO:HD3	2.01	0.42
1:A:1043:SER:O	1:A:1044:HIS:CB	2.67	0.42
1:B:420:MET:CE	1:B:427:PRO:HD3	2.50	0.42
1:B:6:ILE:HG23	1:B:494:ALA:CB	2.49	0.42
1:C:947:GLU:HG3	1:C:948:PHE:N	2.34	0.42
1:C:115:MET:N	1:C:116:PRO:HD2	2.34	0.42
1:A:509:LYS:HD2	1:A:511:GLY:N	2.35	0.42
1:B:139:VAL:O	1:B:326:PRO:HD2	2.19	0.42
1:A:362:PHE:O	1:A:366:LEU:HB2	2.19	0.42
1:A:1027:VAL:HG23	1:A:1028:VAL:N	2.35	0.42
1:B:420:MET:CE	1:B:427:PRO:CD	2.97	0.42
1:A:519:MET:O	1:A:523:SER:OG	2.35	0.41
1:C:434:SER:O	1:C:438:ILE:HG12	2.20	0.41
2:E:63:VAL:HG21	2:E:95:ILE:HD13	2.02	0.41
1:B:904:VAL:HG11	1:B:942:ALA:HB2	2.01	0.41
1:B:1030:ARG:HD2	1:B:1030:ARG:HA	1.87	0.41
1:A:84:SER:HB2	5:A:1780:HOH:O	2.20	0.41
1:A:480:LEU:HA	1:A:480:LEU:HD23	1.89	0.41
1:B:777:ALA:O	1:B:781:MET:HG2	2.20	0.41
1:C:398:MET:O	1:C:402:ILE:HG12	2.20	0.41
1:C:32:VAL:HA	1:C:390:ILE:O	2.21	0.41
2:E:42:ALA:O	2:E:50:PRO:HD3	2.19	0.41
1:A:405:LEU:HD21	1:A:477:ALA:HB1	2.02	0.41
1:C:671:ILE:HB	1:C:674:LEU:HD11	2.02	0.41
1:C:944:LEU:O	1:C:971:ARG:HG3	2.21	0.41
1:A:713:LEU:HG	1:A:843:LEU:HD23	2.02	0.41
1:A:911:GLY:CA	1:A:1013:THR:HG21	2.51	0.41
1:A:454:VAL:N	1:A:455:PRO:CD	2.83	0.41
1:A:788:ASP:HB2	5:A:1781:HOH:O	2.19	0.41
1:A:572:PHE:HE1	1:A:631:LEU:HD21	1.85	0.41
1:A:423:GLU:OE1	1:A:425:LEU:HD11	2.21	0.41
1:A:356:TYR:HD1	1:A:365:THR:HG21	1.85	0.41
2:D:91:GLY:HA2	2:D:128:ILE:HD12	2.02	0.41
1:A:185:ARG:HD3	1:A:185:ARG:HA	1.82	0.41
1:B:1024:VAL:O	1:B:1028:VAL:HG22	2.19	0.41
1:A:514:GLY:O	1:A:518:ARG:HG3	2.20	0.41
1:A:754:TRP:CH2	1:A:780:ARG:HA	2.55	0.41
1:B:451:ALA:HB2	1:B:883:VAL:HG12	2.03	0.41
1:B:483:LEU:HA	1:B:483:LEU:HD23	1.90	0.41
1:A:909:VAL:HG22	1:A:931:LEU:HD11	2.03	0.41

*Continued on next page...*

*Continued from previous page...*

Atom-1	Atom-2	Interatomic distance (Å)	Clash overlap (Å)
1:B:1022:VAL:N	1:B:1023:PRO:HD2	2.36	0.41
1:C:168:ARG:NH2	5:C:1830:HOH:O	2.47	0.41
1:A:1038:GLU:O	1:A:1040:ILE:N	2.54	0.41
1:B:489:THR:N	1:B:490:PRO:CD	2.83	0.41
1:A:680:PHE:HZ	1:A:716:VAL:HG12	1.86	0.41
1:B:307:ARG:NE	5:B:1549:HOH:O	2.21	0.41
2:D:129:VAL:O	2:D:133:LEU:HG	2.21	0.41
1:C:154:ILE:O	1:C:158:VAL:HG23	2.21	0.41
1:B:169:THR:OG1	1:B:309:GLU:HG3	2.21	0.41
1:B:169:THR:O	1:B:172:VAL:HG13	2.20	0.41
1:A:578:LEU:HB3	1:A:579:PRO:CD	2.51	0.41
1:B:219:LEU:HD23	1:C:754:TRP:CZ3	2.56	0.41
1:A:919:ARG:HD3	1:A:1005:THR:HG21	2.02	0.41
1:C:587:THR:CG2	1:C:622:GLN:O	2.69	0.41
1:C:868:LEU:O	1:C:872:GLN:HG2	2.20	0.41
1:A:483:LEU:CD2	1:A:487:ILE:HD12	2.51	0.41
1:B:189:ASN:HA	1:B:190:PRO:HD2	1.87	0.41
1:C:483:LEU:HD23	1:C:483:LEU:HA	1.91	0.41
1:B:324:VAL:CG1	1:B:326:PRO:HD3	2.49	0.40
1:B:247:GLY:HA2	1:B:268:ILE:CD1	2.50	0.40
1:A:578:LEU:HB3	1:A:579:PRO:HD2	2.03	0.40
1:B:589:LYS:NZ	5:B:1433:HOH:O	2.36	0.40
1:C:841:MET:O	1:C:845:GLU:HG3	2.21	0.40
2:E:82:THR:O	2:E:85:HIS:HB2	2.21	0.40
1:B:754:TRP:CH2	1:B:780:ARG:HA	2.56	0.40
1:B:527:TYR:CZ	1:B:968:VAL:HG13	2.55	0.40
1:A:68:ASN:O	1:A:110:LYS:HB3	2.22	0.40
1:C:987:MET:HB3	1:C:988:PRO:HD3	2.03	0.40
1:C:334:LYS:NZ	5:C:1436:HOH:O	2.48	0.40
1:A:522:LYS:HD2	1:A:522:LYS:HA	1.83	0.40
1:A:716:VAL:O	1:A:716:VAL:HG23	2.21	0.40
1:C:63:GLN:O	1:C:67:GLN:HG2	2.21	0.40
1:A:456:MET:HG2	1:A:467:TYR:HB3	2.03	0.40
1:A:99:ASP:OD1	1:A:101:ASP:HB2	2.21	0.40
1:B:649:MET:HE3	5:B:1798:HOH:O	2.20	0.40
1:C:683:GLU:O	1:C:857:TYR:HA	2.21	0.40
1:C:764:ASP:HB3	1:C:769:LYS:HD2	2.03	0.40

There are no symmetry-related clashes.

## 5.3 Torsion angles [i](#)

### 5.3.1 Protein backbone [i](#)

In the following table, the Percentiles column shows the percent Ramachandran outliers of the chain as a percentile score with respect to all X-ray entries followed by that with respect to entries of similar resolution.

The Analysed column shows the number of residues for which the backbone conformation was analysed, and the total number of residues.

Mol	Chain	Analysed	Favoured	Allowed	Outliers	Percentiles	
1	A	1042/1057 (99%)	1004 (96%)	33 (3%)	5 (0%)	34	26
1	B	1031/1057 (98%)	995 (96%)	28 (3%)	8 (1%)	24	15
1	C	1031/1057 (98%)	1000 (97%)	30 (3%)	1 (0%)	56	53
2	D	154/169 (91%)	151 (98%)	3 (2%)	0	100	100
2	E	150/169 (89%)	146 (97%)	4 (3%)	0	100	100
All	All	3408/3509 (97%)	3296 (97%)	98 (3%)	14 (0%)	39	33

All (14) Ramachandran outliers are listed below:

Mol	Chain	Res	Type
1	B	659	LYS
1	B	672	VAL
1	C	510	LYS
1	A	509	LYS
1	A	510	LYS
1	A	673	GLU
1	B	872	GLN
1	A	869	SER
1	B	673	GLU
1	B	676	THR
1	B	679	GLY
1	A	1038	GLU
1	B	671	ILE
1	B	870	GLY

### 5.3.2 Protein sidechains [i](#)

In the following table, the Percentiles column shows the percent sidechain outliers of the chain as a percentile score with respect to all X-ray entries followed by that with respect to entries of similar resolution.

The Analysed column shows the number of residues for which the sidechain conformation was analysed, and the total number of residues.

Mol	Chain	Analysed	Rotameric	Outliers	Percentiles	
1	A	842/862 (98%)	817 (97%)	25 (3%)	48	47
1	B	838/862 (97%)	819 (98%)	19 (2%)	58	60
1	C	838/862 (97%)	819 (98%)	19 (2%)	58	60
2	D	120/132 (91%)	117 (98%)	3 (2%)	55	55
2	E	117/132 (89%)	115 (98%)	2 (2%)	68	71
All	All	2755/2850 (97%)	2687 (98%)	68 (2%)	55	55

All (68) residues with a non-rotameric sidechain are listed below:

Mol	Chain	Res	Type
1	A	11	PHE
1	A	49	TYR
1	A	60	THR
1	A	148	THR
1	A	255	GLN
1	A	270	LEU
1	A	330	THR
1	A	365	THR
1	A	449	LEU
1	A	478	MET
1	A	483	LEU
1	A	519	MET
1	A	630	SER
1	A	659	LYS
1	A	672	VAL
1	A	674	LEU
1	A	801	PHE
1	A	815	ARG
1	A	868	LEU
1	A	872	GLN
1	A	968	VAL
1	A	971	ARG
1	A	987	MET
1	A	1021	PHE
1	A	1039	ASP
1	B	30	LEU
1	B	48	SER
1	B	49	TYR

*Continued on next page...*

*Continued from previous page...*

Mol	Chain	Res	Type
1	B	314	GLU
1	B	365	THR
1	B	439	GLN
1	B	610	PHE
1	B	633	ASP
1	B	659	LYS
1	B	660	ASP
1	B	678	THR
1	B	714	THR
1	B	748	THR
1	B	758	TYR
1	B	801	PHE
1	B	866	GLU
1	B	921	LEU
1	B	951	ASP
1	B	986	VAL
1	C	11	PHE
1	C	49	TYR
1	C	96	SER
1	C	129	VAL
1	C	255	GLN
1	C	324	VAL
1	C	392	THR
1	C	452	VAL
1	C	482	VAL
1	C	564	LEU
1	C	587	THR
1	C	620	ARG
1	C	674	LEU
1	C	801	PHE
1	C	901	VAL
1	C	948	PHE
1	C	951	ASP
1	C	993	THR
1	C	1011	MET
2	D	61	GLU
2	D	139	VAL
2	D	166	GLN
2	E	45	VAL
2	E	94	GLU

Some sidechains can be flipped to improve hydrogen bonding and reduce clashes. All (3) such sidechains are listed below:

Mol	Chain	Res	Type
1	A	584	GLN
1	C	830	GLN
2	E	69	ASN

### 5.3.3 RNA ⓘ

There are no RNA molecules in this entry.

## 5.4 Non-standard residues in protein, DNA, RNA chains ⓘ

There are no non-standard protein/DNA/RNA residues in this entry.

## 5.5 Carbohydrates ⓘ

There are no carbohydrates in this entry.

## 5.6 Ligand geometry ⓘ

4 ligands are modelled in this entry.

In the following table, the Counts columns list the number of bonds (or angles) for which Mogul statistics could be retrieved, the number of bonds (or angles) that are observed in the model and the number of bonds (or angles) that are defined in the chemical component dictionary. The Link column lists molecule types, if any, to which the group is linked. The Z score for a bond length (or angle) is the number of standard deviations the observed value is removed from the expected value. A bond length (or angle) with  $|Z| > 2$  is considered an outlier worth inspection. RMSZ is the root-mean-square of all Z scores of the bond lengths (or angles).

Mol	Type	Chain	Res	Link	Bond lengths			Bond angles		
					Counts	RMSZ	$\# Z  > 2$	Counts	RMSZ	$\# Z  > 2$
3	LMT	A	1101	-	36,36,36	0.46	0	47,47,47	0.88	3 (6%)
3	LMT	B	1101	-	36,36,36	0.40	0	47,47,47	0.88	0
4	MIY	B	1102	-	35,36,36	1.65	10 (28%)	40,58,58	2.71	19 (47%)
3	LMT	C	1101	-	36,36,36	0.42	0	47,47,47	0.91	1 (2%)

In the following table, the Chirals column lists the number of chiral outliers, the number of chiral centers analysed, the number of these observed in the model and the number defined in the chemical component dictionary. Similar counts are reported in the Torsion and Rings columns. '-' means no outliers of that kind were identified.

Mol	Type	Chain	Res	Link	Chirals	Torsions	Rings
3	LMT	A	1101	-	-	0/21/61/61	0/2/2/2
3	LMT	B	1101	-	-	0/21/61/61	0/2/2/2
4	MIY	B	1102	-	-	0/12/70/70	0/4/4/4
3	LMT	C	1101	-	-	0/21/61/61	0/2/2/2

All (10) bond length outliers are listed below:

Mol	Chain	Res	Type	Atoms	Z	Observed(Å)	Ideal(Å)
4	B	1102	MIY	C7-C16	-2.59	1.48	1.51
4	B	1102	MIY	C18-C1	-2.58	1.51	1.55
4	B	1102	MIY	C14-C13	-2.43	1.37	1.41
4	B	1102	MIY	CN7-N7	2.19	1.51	1.45
4	B	1102	MIY	C21-N2	2.39	1.40	1.33
4	B	1102	MIY	O4-C13	2.45	1.41	1.36
4	B	1102	MIY	C18-C17	2.46	1.54	1.52
4	B	1102	MIY	C2-C21	2.58	1.52	1.47
4	B	1102	MIY	C4-N1	2.67	1.52	1.47
4	B	1102	MIY	C11-C10	3.10	1.45	1.39

All (23) bond angle outliers are listed below:

Mol	Chain	Res	Type	Atoms	Z	Observed(°)	Ideal(°)
4	B	1102	MIY	C11-C12-C13	-6.67	113.65	120.49
4	B	1102	MIY	O6-C17-C16	-6.14	117.96	123.84
4	B	1102	MIY	O5-C15-C14	-3.91	114.67	122.01
4	B	1102	MIY	C11-C10-N7	-3.35	116.90	121.59
4	B	1102	MIY	O7-C18-C17	-2.77	104.89	109.85
4	B	1102	MIY	O8-C21-N2	-2.43	116.73	122.76
3	C	1101	LMT	C4B-C3B-C2B	-2.17	106.73	110.79
3	A	1101	LMT	C1B-O1B-C4'	-2.14	112.42	118.01
4	B	1102	MIY	O4-C13-C12	-2.03	113.77	119.35
3	A	1101	LMT	O5B-C5B-C4B	2.02	113.48	109.68
4	B	1102	MIY	C14-C15-C16	2.05	121.92	118.68
4	B	1102	MIY	CN7-N7-C10	2.07	121.63	115.18
4	B	1102	MIY	C6-C7-C16	2.18	113.42	109.56
4	B	1102	MIY	C71-N7-CN7	2.20	123.22	115.96
4	B	1102	MIY	C19-N1-C4	2.28	119.64	114.07
3	A	1101	LMT	O1'-C1'-C2'	2.31	110.96	108.04
4	B	1102	MIY	C18-C1-C2	2.49	120.12	116.13
4	B	1102	MIY	C6-C5-C4	2.60	115.41	111.47
4	B	1102	MIY	C18-C17-C16	2.81	126.32	122.95
4	B	1102	MIY	C9-C10-N7	3.61	122.01	118.94
4	B	1102	MIY	C15-C16-C17	4.58	122.83	118.93

*Continued on next page...*

*Continued from previous page...*

Mol	Chain	Res	Type	Atoms	Z	Observed( $^{\circ}$ )	Ideal( $^{\circ}$ )
4	B	1102	MIY	C12-C13-C14	5.00	126.79	120.21
4	B	1102	MIY	C1-C18-C17	6.20	117.52	109.73

There are no chirality outliers.

There are no torsion outliers.

There are no ring outliers.

3 monomers are involved in 8 short contacts:

Mol	Chain	Res	Type	Clashes	Symm-Clashes
3	A	1101	LMT	3	0
3	B	1101	LMT	3	0
3	C	1101	LMT	2	0

## 5.7 Other polymers [i](#)

There are no such residues in this entry.

## 5.8 Polymer linkage issues [i](#)

There are no chain breaks in this entry.



## 6 Fit of model and data

### 6.1 Protein, DNA and RNA chains

In the following table, the column labelled ‘#RSRZ> 2’ contains the number (and percentage) of RSRZ outliers, followed by percent RSRZ outliers for the chain as percentile scores relative to all X-ray entries and entries of similar resolution. The OWAB column contains the minimum, median, 95<sup>th</sup> percentile and maximum values of the occupancy-weighted average B-factor per residue. The column labelled ‘Q< 0.9’ lists the number of (and percentage) of residues with an average occupancy less than 0.9.

Mol	Chain	Analysed	<RSRZ>	#RSRZ>2	OWAB(Å <sup>2</sup> )	Q<0.9
1	A	1044/1057 (98%)	0.21	80 (7%) 16 17	13, 41, 98, 164	0
1	B	1033/1057 (97%)	-0.09	26 (2%) 61 61	15, 35, 61, 107	0
1	C	1033/1057 (97%)	-0.14	20 (1%) 70 70	16, 33, 62, 101	0
2	D	156/169 (92%)	-0.30	1 (0%) 90 90	25, 34, 57, 94	0
2	E	152/169 (89%)	1.43	47 (30%) 1 1	34, 53, 83, 115	0
All	All	3418/3509 (97%)	0.04	174 (5%) 32 33	13, 36, 77, 164	0

All (174) RSRZ outliers are listed below:

Mol	Chain	Res	Type	RSRZ
1	A	870	GLY	11.3
1	A	869	SER	9.9
1	C	362	PHE	8.7
1	A	868	LEU	8.3
1	A	1044	HIS	7.8
1	A	871	ASN	7.2
2	E	66	LEU	6.3
1	A	866	GLU	6.2
1	A	678	THR	6.1
2	E	35	ALA	5.7
2	E	33	LEU	5.6
2	E	32	ILE	5.6
1	A	511	GLY	5.5
1	A	1037	ASN	5.2
1	A	873	ALA	5.2
1	A	675	GLY	5.1
1	A	513	PHE	5.1
1	A	515	TRP	5.1
1	A	865	GLN	5.1
1	A	512	PHE	5.1

*Continued on next page...*

*Continued from previous page...*

Mol	Chain	Res	Type	RSRZ
1	A	510	LYS	5.0
1	A	1043	SER	4.9
2	E	34	MET	4.9
2	E	99	LEU	4.9
1	B	868	LEU	4.8
1	A	421	ALA	4.8
1	B	678	THR	4.8
1	C	513	PHE	4.8
1	A	872	GLN	4.8
2	E	100	LEU	4.7
1	A	459	PHE	4.7
1	A	867	ARG	4.7
1	A	918	PHE	4.6
2	E	31	ARG	4.6
2	E	68	LYS	4.6
2	E	67	LEU	4.5
1	B	510	LYS	4.5
1	A	503	GLY	4.4
1	A	461	GLY	4.3
2	E	95	ILE	4.3
1	B	675	GLY	4.3
1	A	500	ILE	4.2
1	A	509	LYS	4.2
2	E	63	VAL	4.0
2	E	165	LEU	4.0
1	A	362	PHE	3.9
2	E	101	LYS	3.9
1	A	540	ARG	3.8
2	E	36	ASN	3.8
2	E	106	VAL	3.8
1	C	811	TYR	3.7
1	A	508	GLY	3.7
1	A	619	GLY	3.6
1	A	672	VAL	3.6
2	E	62	ILE	3.5
2	E	64	GLU	3.5
1	B	508	GLY	3.5
1	A	505	HIS	3.5
2	E	97	GLU	3.5
2	E	37	GLY	3.4
1	A	514	GLY	3.4
1	A	542	LEU	3.4

*Continued on next page...*

*Continued from previous page...*

Mol	Chain	Res	Type	RSRZ
1	C	501	ALA	3.3
1	B	677	ALA	3.3
1	C	500	ILE	3.3
1	B	676	THR	3.3
1	A	518	ARG	3.3
1	A	1040	ILE	3.2
2	E	30	VAL	3.2
1	A	558	ARG	3.2
1	A	1035	ARG	3.2
2	E	93	LEU	3.2
1	B	257	GLY	3.1
1	A	557	VAL	3.0
2	E	73	VAL	3.0
1	B	255	GLN	3.0
1	A	462	SER	3.0
1	C	497	LEU	3.0
1	A	501	ALA	3.0
1	B	511	GLY	2.9
2	E	108	ALA	2.9
2	E	117	LEU	2.9
1	B	635	ALA	2.9
2	E	51	LEU	2.9
1	A	541	TYR	2.9
1	A	618	ALA	2.9
2	E	134	LYS	2.9
1	A	674	LEU	2.9
2	E	84	LEU	2.9
2	E	65	VAL	2.9
1	A	38	ILE	2.8
1	C	511	GLY	2.8
2	E	28	ASP	2.8
2	E	69	ASN	2.8
1	A	836	SER	2.8
2	E	148	THR	2.8
1	A	543	VAL	2.8
1	A	670	ALA	2.8
1	A	676	THR	2.8
1	A	554	TYR	2.7
1	B	597	TYR	2.7
1	C	510	LYS	2.7
2	E	60	LEU	2.7
2	E	146	GLY	2.7

*Continued on next page...*

*Continued from previous page...*

Mol	Chain	Res	Type	RSRZ
1	C	955	LYS	2.7
1	C	512	PHE	2.7
1	B	638	PRO	2.7
1	A	506	GLY	2.7
1	C	366	LEU	2.7
1	C	494	ALA	2.7
2	E	61	GLU	2.7
1	A	1036	LYS	2.6
1	B	501	ALA	2.6
1	B	657	GLN	2.5
1	A	504	ASP	2.5
2	E	161	LEU	2.5
2	D	11	GLY	2.5
1	A	993	THR	2.5
1	A	1033	PHE	2.4
1	C	363	ARG	2.4
2	E	70	GLY	2.4
1	A	620	ARG	2.4
1	A	956	GLU	2.4
1	B	877	TYR	2.4
1	A	488	LEU	2.4
1	A	835	LYS	2.4
1	C	1033	PHE	2.4
2	E	98	VAL	2.3
1	C	1032	ARG	2.3
1	A	1038	GLU	2.3
1	B	512	PHE	2.3
1	A	495	THR	2.3
1	A	497	LEU	2.3
1	A	356	TYR	2.3
1	B	513	PHE	2.3
1	B	653	ARG	2.3
1	A	502	LYS	2.3
1	C	425	LEU	2.3
1	B	458	PHE	2.3
2	E	150	PHE	2.3
2	E	54	ALA	2.3
1	B	515	TRP	2.2
1	A	526	HIS	2.2
1	A	489	THR	2.2
1	A	547	ILE	2.2
1	A	363	ARG	2.2

*Continued on next page...*

*Continued from previous page...*

Mol	Chain	Res	Type	RSRZ
1	C	739	LEU	2.2
1	A	517	ASN	2.2
1	A	874	PRO	2.2
1	B	253	VAL	2.2
1	B	874	PRO	2.2
2	E	29	GLU	2.2
1	A	677	ALA	2.2
2	E	136	GLY	2.1
1	A	496	MET	2.1
1	C	503	GLY	2.1
1	A	535	LEU	2.1
2	E	130	GLU	2.1
2	E	22	ALA	2.1
1	A	617	PHE	2.1
1	A	255	GLN	2.1
2	E	40	VAL	2.1
1	A	359	LEU	2.1
2	E	102	ASN	2.1
1	B	837	THR	2.0
1	A	546	LEU	2.0
1	A	516	PHE	2.0
1	B	600	THR	2.0
1	C	356	TYR	2.0
2	E	92	HIS	2.0
1	B	655	PHE	2.0
1	A	467	TYR	2.0
1	A	507	GLU	2.0
1	C	496	MET	2.0

## 6.2 Non-standard residues in protein, DNA, RNA chains [i](#)

There are no non-standard protein/DNA/RNA residues in this entry.

## 6.3 Carbohydrates [i](#)

There are no carbohydrates in this entry.

## 6.4 Ligands [i](#)

In the following table, the Atoms column lists the number of modelled atoms in the group and the number defined in the chemical component dictionary. LLDF column lists the quality of electron

density of the group with respect to its neighbouring residues in protein, DNA or RNA chains. The B-factors column lists the minimum, median, 95<sup>th</sup> percentile and maximum values of B factors of atoms in the group. The column labelled 'Q< 0.9' lists the number of atoms with occupancy less than 0.9.

Mol	Type	Chain	Res	Atoms	RSCC	RSR	LLDF	B-factors(Å <sup>2</sup> )	Q<0.9
3	LMT	A	1101	35/35	0.89	0.17	3.18	46,66,89,93	0
3	LMT	C	1101	35/35	0.94	0.12	1.91	48,57,71,72	0
3	LMT	B	1101	35/35	0.93	0.15	1.84	44,56,85,91	0
4	MIY	B	1102	33/33	0.90	0.14	-0.04	46,63,90,103	0

## 6.5 Other polymers

There are no such residues in this entry.