



Full wwPDB X-ray Structure Validation Report ⓘ

Feb 1, 2016 – 01:37 PM GMT

PDB ID : 3UER
Title : Crystal structure of amylosucrase from *Deinococcus geothermalis* in complex with turanose
Authors : Guerin, F.; Pizzut-Serin, S.; Potocki-Veronese, G.; Guillet, V.; Mourey, L.; Remaud-Simeon, M.; Andre, I.; Tranier, S.
Deposited on : 2011-10-31
Resolution : 2.10 Å(reported)

This is a Full wwPDB X-ray Structure Validation Report for a publicly released PDB entry.
We welcome your comments at validation@mail.wwpdb.org
A user guide is available at
<http://wwpdb.org/validation/2016/XrayValidationReportHelp>
with specific help available everywhere you see the ⓘ symbol.

The following versions of software and data (see [references ⓘ](#)) were used in the production of this report:

MolProbity : 4.02b-467
Mogul : 1.7 (RC4), CSD as536be (2015)
Xtriage (Phenix) : 1.9-1692
EDS : rb-20026688
Percentile statistics : 20151230.v01 (using entries in the PDB archive December 30th 2015)
Refmac : 5.8.0135
CCP4 : 6.5.0
Ideal geometry (proteins) : Engh & Huber (2001)
Ideal geometry (DNA, RNA) : Parkinson et al. (1996)
Validation Pipeline (wwPDB-VP) : trunk26865

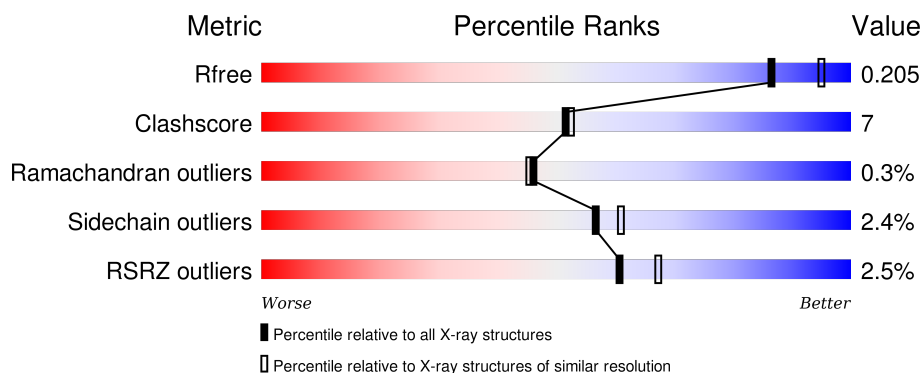
1 Overall quality at a glance

The following experimental techniques were used to determine the structure:

X-RAY DIFFRACTION


The reported resolution of this entry is 2.10 Å.

Percentile scores (ranging between 0-100) for global validation metrics of the entry are shown in the following graphic. The table shows the number of entries on which the scores are based.



Metric	Whole archive (#Entries)	Similar resolution (#Entries, resolution range(Å))
R_{free}	91344	3939 (2.10-2.10)
Clashscore	102246	4460 (2.10-2.10)
Ramachandran outliers	100387	4413 (2.10-2.10)
Sidechain outliers	100360	4414 (2.10-2.10)
RSRZ outliers	91569	3948 (2.10-2.10)

The table below summarises the geometric issues observed across the polymeric chains and their fit to the electron density. The red, orange, yellow and green segments on the lower bar indicate the fraction of residues that contain outliers for ≥ 3 , 2, 1 and 0 types of geometric quality criteria. A grey segment represents the fraction of residues that are not modelled. The numeric value for each fraction is indicated below the corresponding segment, with a dot representing fractions $\leq 5\%$. The upper red bar (where present) indicates the fraction of residues that have poor fit to the electron density. The numeric value is given above the bar.

Mol	Chain	Length	Quality of chain
1	A	655	

2 Entry composition [i](#)

There are 4 unique types of molecules in this entry. The entry contains 5621 atoms, of which 0 are hydrogens and 0 are deuteriums.

In the tables below, the ZeroOcc column contains the number of atoms modelled with zero occupancy, the AltConf column contains the number of residues with at least one atom in alternate conformation and the Trace column contains the number of residues modelled with at most 2 atoms.

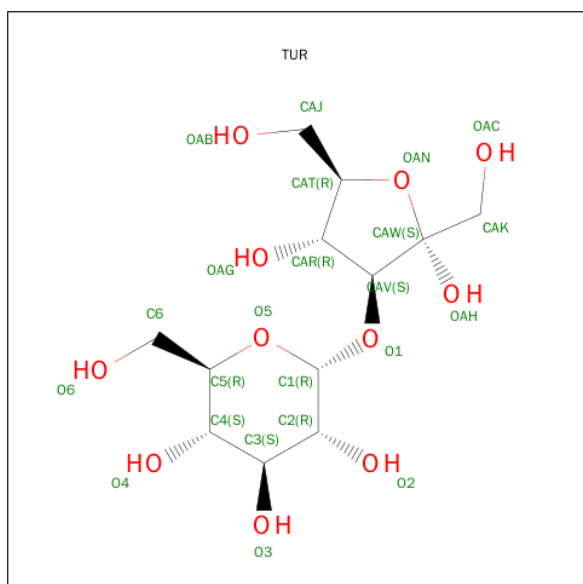
- Molecule 1 is a protein called Amylosucrase.

Mol	Chain	Residues	Atoms					ZeroOcc	AltConf	Trace
			Total	C	N	O	S			
1	A	651	5181	3295	936	937	13	0	10	0

There are 5 discrepancies between the modelled and reference sequences:

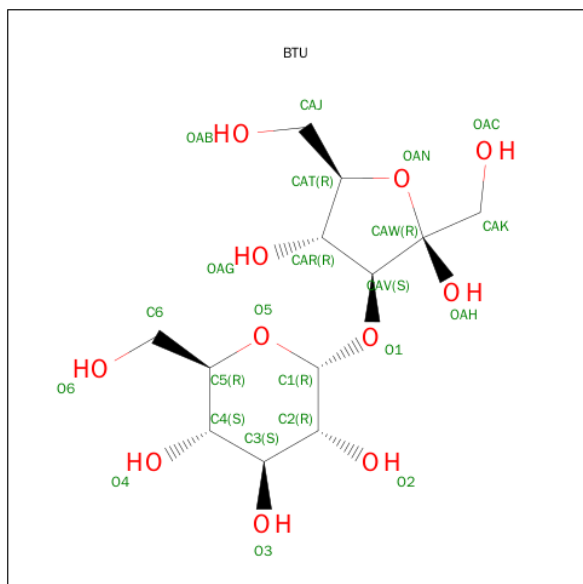
Chain	Residue	Modelled	Actual	Comment	Reference
A	-4	GLY	-	EXPRESSION TAG	UNP Q1J0W0
A	-3	PRO	-	EXPRESSION TAG	UNP Q1J0W0
A	-2	LEU	-	EXPRESSION TAG	UNP Q1J0W0
A	-1	GLY	-	EXPRESSION TAG	UNP Q1J0W0
A	0	SER	-	EXPRESSION TAG	UNP Q1J0W0

- Molecule 2 is 3-O-ALPHA-D-GLUCOPYRANOSYL-ALPHA-D-FRUCTOFURANOSE (three-letter code: TUR) (formula: C₁₂H₂₂O₁₁).



Mol	Chain	Residues	Atoms			ZeroOcc	AltConf
2	A	1	Total	C	O	0	1
			23	12	11		

- Molecule 3 is 3-O-ALPHA-D-GLUCOPYRANOSYL-BETA-D-FRUCTOFURANOSE (three-letter code: BTU) (formula: $C_{12}H_{22}O_{11}$).

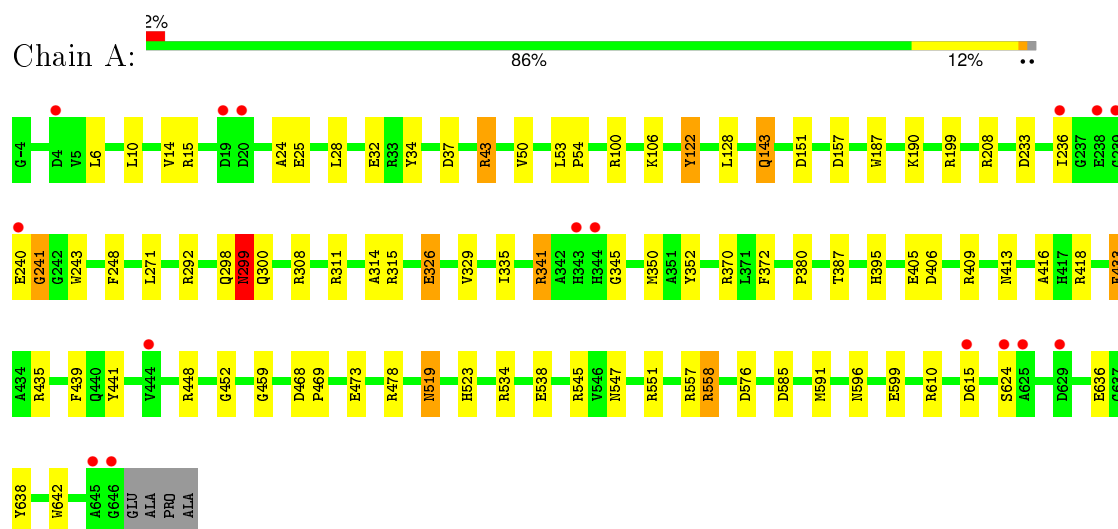


Mol	Chain	Residues	Atoms			ZeroOcc	AltConf
3	A	1	Total	C	O	0	1
			23	12	11		

- Molecule 4 is water.

Mol	Chain	Residues	Atoms		ZeroOcc	AltConf
4	A	394	Total	O	0	0
			394	394		

- Molecule 1: Amylosucrase



4 Data and refinement statistics

Property	Value	Source
Space group	C 2 2 21	Depositor
Cell constants a, b, c, α , β , γ	104.73Å 110.42Å 115.32Å 90.00° 90.00° 90.00°	Depositor
Resolution (Å)	13.00 – 2.10 12.99 – 2.10	Depositor EDS
% Data completeness (in resolution range)	100.0 (13.00-2.10) 99.9 (12.99-2.10)	Depositor EDS
R_{merge}	(Not available)	Depositor
R_{sym}	(Not available)	Depositor
$\langle I/\sigma(I) \rangle$ ¹	3.81 (at 2.09Å)	Xtriage
Refinement program	REFMAC 5.5.0072	Depositor
R, R_{free}	0.146 , 0.207 0.148 , 0.205	Depositor DCC
R_{free} test set	1971 reflections (5.31%)	DCC
Wilson B-factor (Å ²)	21.2	Xtriage
Anisotropy	0.040	Xtriage
Bulk solvent k_{sol} (e/Å ³), B_{sol} (Å ²)	0.38 , 48.7	EDS
Estimated twinning fraction	No twinning to report.	Xtriage
L-test for twinning ²	$\langle L \rangle = 0.49$, $\langle L^2 \rangle = 0.32$	Xtriage
Outliers	0 of 39099 reflections	Xtriage
F_o, F_c correlation	0.96	EDS
Total number of atoms	5621	wwPDB-VP
Average B, all atoms (Å ²)	21.0	wwPDB-VP

Xtriage's analysis on translational NCS is as follows: *The largest off-origin peak in the Patterson function is 4.12% of the height of the origin peak. No significant pseudotranslation is detected.*

¹Intensities estimated from amplitudes.

²Theoretical values of $\langle |L| \rangle$, $\langle L^2 \rangle$ for acentric reflections are 0.5, 0.375 respectively for untwinned datasets, and 0.333, 0.2 for perfectly twinned datasets.

5 Model quality

5.1 Standard geometry

Bond lengths and bond angles in the following residue types are not validated in this section: BTU, TUR

The Z score for a bond length (or angle) is the number of standard deviations the observed value is removed from the expected value. A bond length (or angle) with $|Z| > 5$ is considered an outlier worth inspection. RMSZ is the root-mean-square of all Z scores of the bond lengths (or angles).

Mol	Chain	Bond lengths		Bond angles	
		RMSZ	$\# Z > 5$	RMSZ	$\# Z > 5$
1	A	1.10	6/5320 (0.1%)	0.97	19/7240 (0.3%)

All (6) bond length outliers are listed below:

Mol	Chain	Res	Type	Atoms	Z	Observed(Å)	Ideal(Å)
1	A	405	GLU	CG-CD	7.16	1.62	1.51
1	A	433	PHE	CE1-CZ	5.64	1.48	1.37
1	A	122	TYR	CE1-CZ	5.34	1.45	1.38
1	A	405	GLU	CB-CG	5.32	1.62	1.52
1	A	352	TYR	CD1-CE1	5.12	1.47	1.39
1	A	187	TRP	CG-CD1	5.04	1.43	1.36

All (19) bond angle outliers are listed below:

Mol	Chain	Res	Type	Atoms	Z	Observed(°)	Ideal(°)
1	A	478	ARG	NE-CZ-NH1	-10.33	115.14	120.30
1	A	308	ARG	NE-CZ-NH1	7.90	124.25	120.30
1	A	341	ARG	NE-CZ-NH1	7.55	124.08	120.30
1	A	308	ARG	NE-CZ-NH2	-6.54	117.03	120.30
1	A	370	ARG	NE-CZ-NH1	-6.25	117.17	120.30
1	A	341	ARG	NE-CZ-NH2	-6.23	117.19	120.30
1	A	478	ARG	NE-CZ-NH2	5.94	123.27	120.30
1	A	558	ARG	NE-CZ-NH1	5.79	123.19	120.30
1	A	43	ARG	NE-CZ-NH1	5.58	123.09	120.30
1	A	534	ARG	NE-CZ-NH1	-5.52	117.54	120.30
1	A	299	ASN	CB-CA-C	-5.41	99.58	110.40
1	A	558	ARG	NE-CZ-NH2	-5.32	117.64	120.30
1	A	199	ARG	NE-CZ-NH1	5.24	122.92	120.30
1	A	151	ASP	CB-CG-OD2	5.20	122.98	118.30
1	A	199	ARG	NE-CZ-NH2	-5.15	117.72	120.30

Continued on next page...

Continued from previous page...

Mol	Chain	Res	Type	Atoms	Z	Observed(°)	Ideal(°)
1	A	418	ARG	NE-CZ-NH1	5.14	122.87	120.30
1	A	370	ARG	NE-CZ-NH2	5.08	122.84	120.30
1	A	557	ARG	NE-CZ-NH1	5.02	122.81	120.30
1	A	576	ASP	CB-CG-OD1	5.01	122.81	118.30

There are no chirality outliers.

There are no planarity outliers.

5.2 Too-close contacts

In the following table, the Non-H and H(model) columns list the number of non-hydrogen atoms and hydrogen atoms in the chain respectively. The H(added) column lists the number of hydrogen atoms added and optimized by MolProbity. The Clashes column lists the number of clashes within the asymmetric unit, whereas Symm-Clashes lists symmetry related clashes.

Mol	Chain	Non-H	H(model)	H(added)	Clashes	Symm-Clashes
1	A	5181	0	5009	62	0
2	A	23	0	19	8	0
3	A	23	0	20	5	0
4	A	394	0	0	7	0
All	All	5621	0	5048	70	0

The all-atom clashscore is defined as the number of clashes found per 1000 atoms (including hydrogen atoms). The all-atom clashscore for this structure is 7.

All (70) close contacts within the same asymmetric unit are listed below, sorted by their clash magnitude.

Atom-1	Atom-2	Interatomic distance (Å)	Clash overlap (Å)
1:A:585[A]:ASP:OD1	4:A:916:HOH:O	1.62	1.15
1:A:299:ASN:HD21	1:A:329:VAL:HG11	1.20	1.03
1:A:326:GLU:OE2	3:A:701[B]:BTU:HAK	1.62	1.00
1:A:190:LYS:HD3	4:A:1149:HOH:O	1.61	0.98
2:A:700[A]:TUR:C1	2:A:700[A]:TUR:HAK	2.02	0.88
1:A:335:ILE:HG13	1:A:380:PRO:HG2	1.55	0.88
1:A:34:TYR:OH	1:A:315[B]:ARG:NH1	2.07	0.86
2:A:700[A]:TUR:HAJ	2:A:700[A]:TUR:OAC	1.75	0.85
3:A:701[B]:BTU:HAJ	3:A:701[B]:BTU:OAH	1.76	0.83
1:A:326:GLU:OE2	2:A:700[A]:TUR:HAKA	1.83	0.79
1:A:610:ARG:HD3	1:A:615:ASP:OD1	1.83	0.79
2:A:700[A]:TUR:HAJ	2:A:700[A]:TUR:CAK	2.12	0.78

Continued on next page...

Continued from previous page...

Atom-1	Atom-2	Interatomic distance (Å)	Clash overlap (Å)
1:A:435[A]:ARG:NH1	4:A:1138:HOH:O	2.16	0.78
1:A:240:GLU:O	4:A:1183:HOH:O	2.02	0.78
1:A:14:VAL:HG11	1:A:28[B]:LEU:HD22	1.65	0.78
1:A:591:MET:HE2	1:A:642:TRP:HB3	1.69	0.74
2:A:700[A]:TUR:HAK	2:A:700[A]:TUR:H1	1.69	0.72
1:A:413:ASN:HD22	1:A:416:ALA:H	1.40	0.70
1:A:452:GLY:H	1:A:523:HIS:HD2	1.39	0.69
1:A:299:ASN:HD21	1:A:329:VAL:CG1	2.02	0.69
1:A:298:GLN:O	1:A:299:ASN:HB2	1.93	0.67
1:A:292:ARG:HH11	1:A:300:GLN:HE21	1.42	0.67
1:A:326:GLU:OE1	1:A:326:GLU:O	2.13	0.66
1:A:473:GLU:OE1	1:A:545:ARG:NH2	2.31	0.64
2:A:700[A]:TUR:CAK	2:A:700[A]:TUR:H1	2.29	0.62
1:A:452:GLY:H	1:A:523:HIS:CD2	2.20	0.59
1:A:299:ASN:ND2	1:A:329:VAL:HG11	2.04	0.59
1:A:610:ARG:CD	1:A:615:ASP:OD1	2.51	0.57
1:A:15[A]:ARG:NH1	1:A:25:GLU:OE1	2.38	0.56
1:A:24:ALA:O	1:A:28[B]:LEU:HD23	2.06	0.56
1:A:233:ASP:O	1:A:241:GLY:HA3	2.07	0.55
1:A:143[B]:GLN:NE2	4:A:960:HOH:O	2.31	0.53
1:A:298:GLN:O	1:A:299:ASN:CB	2.55	0.52
1:A:53:LEU:N	1:A:54:PRO:HD3	2.25	0.52
1:A:43:ARG:HD3	4:A:1145:HOH:O	2.11	0.51
1:A:311:ARG:O	1:A:315[B]:ARG:HG3	2.11	0.51
2:A:700[A]:TUR:CAJ	2:A:700[A]:TUR:OAC	2.55	0.50
1:A:28[A]:LEU:O	1:A:32:GLU:HG3	2.12	0.49
1:A:596:ASN:O	1:A:638:TYR:HA	2.11	0.49
1:A:519:ASN:C	1:A:519:ASN:HD22	2.16	0.49
1:A:14:VAL:CG1	1:A:28[B]:LEU:HD22	2.40	0.48
1:A:335:ILE:CG1	1:A:380:PRO:HG2	2.37	0.48
1:A:53:LEU:N	1:A:54:PRO:CD	2.78	0.47
1:A:636[C]:GLU:H	1:A:636[C]:GLU:CD	2.16	0.47
1:A:208:ARG:HD3	1:A:243:TRP:CZ2	2.51	0.46
3:A:701[B]:BTU:HAJ	3:A:701[B]:BTU:HOAH	1.78	0.46
1:A:233:ASP:HB3	1:A:236:ILE:HG13	1.97	0.46
1:A:10:LEU:CD2	1:A:54:PRO:HB3	2.46	0.46
1:A:406:ASP:OD1	1:A:409:ARG:NH2	2.49	0.46
1:A:248:PHE:HE1	3:A:701[B]:BTU:OAB	1.99	0.45
1:A:350:MET:HA	1:A:387:THR:O	2.17	0.45
1:A:591:MET:CE	1:A:642:TRP:HB3	2.44	0.44
1:A:10:LEU:HD21	1:A:54:PRO:HB3	1.99	0.44

Continued on next page...

Continued from previous page...

Atom-1	Atom-2	Interatomic distance (Å)	Clash overlap (Å)
1:A:395:HIS:O	1:A:523:HIS:HE1	2.01	0.44
1:A:433:PHE:O	1:A:459:GLY:HA2	2.17	0.44
1:A:240:GLU:O	1:A:241:GLY:O	2.35	0.43
1:A:547:ASN:HD21	1:A:551:ARG:HE	1.67	0.43
1:A:37:ASP:OD2	1:A:345:GLY:HA3	2.18	0.43
1:A:43:ARG:HA	1:A:50:VAL:HG21	2.01	0.42
1:A:599:GLU:HG3	1:A:638:TYR:CE2	2.54	0.42
1:A:468:ASP:HA	1:A:469:PRO:HD3	1.93	0.42
1:A:106:LYS:HE2	1:A:157:ASP:OD1	2.20	0.41
1:A:326:GLU:CD	3:A:701[B]:BTU:HAK	2.35	0.41
1:A:143[B]:GLN:HG2	1:A:143[B]:GLN:O	2.21	0.41
1:A:439:PHE:HB2	1:A:519:ASN:HD21	1.86	0.41
1:A:409:ARG:NH2	4:A:1132:HOH:O	2.53	0.41
1:A:271:LEU:HD21	1:A:314:ALA:HA	2.02	0.41
1:A:441:TYR:HD1	1:A:448:ARG:HG2	1.85	0.41
1:A:326:GLU:CD	2:A:700[A]:TUR:HAKA	2.42	0.40
1:A:236:ILE:O	1:A:241:GLY:HA2	2.20	0.40

There are no symmetry-related clashes.

5.3 Torsion angles ⓘ

5.3.1 Protein backbone ⓘ

In the following table, the Percentiles column shows the percent Ramachandran outliers of the chain as a percentile score with respect to all X-ray entries followed by that with respect to entries of similar resolution.

The Analysed column shows the number of residues for which the backbone conformation was analysed, and the total number of residues.

Mol	Chain	Analysed	Favoured	Allowed	Outliers	Percentiles
1	A	659/655 (101%)	641 (97%)	16 (2%)	2 (0%)	46 45

All (2) Ramachandran outliers are listed below:

Mol	Chain	Res	Type
1	A	241	GLY
1	A	624	SER

5.3.2 Protein sidechains ⓘ

In the following table, the Percentiles column shows the percent sidechain outliers of the chain as a percentile score with respect to all X-ray entries followed by that with respect to entries of similar resolution.

The Analysed column shows the number of residues for which the sidechain conformation was analysed, and the total number of residues.

Mol	Chain	Analysed	Rotameric	Outliers	Percentiles
1	A	517/532 (97%)	504 (98%)	13 (2%)	55 59

All (13) residues with a non-rotameric sidechain are listed below:

Mol	Chain	Res	Type
1	A	6	LEU
1	A	100	ARG
1	A	122	TYR
1	A	128	LEU
1	A	143[A]	GLN
1	A	143[B]	GLN
1	A	299	ASN
1	A	326	GLU
1	A	341	ARG
1	A	372	PHE
1	A	519	ASN
1	A	538	GLU
1	A	558	ARG

Some sidechains can be flipped to improve hydrogen bonding and reduce clashes. All (7) such sidechains are listed below:

Mol	Chain	Res	Type
1	A	63	HIS
1	A	299	ASN
1	A	300	GLN
1	A	413	ASN
1	A	519	ASN
1	A	523	HIS
1	A	547	ASN

5.3.3 RNA ⓘ

There are no RNA molecules in this entry.

5.4 Non-standard residues in protein, DNA, RNA chains [i](#)

There are no non-standard protein/DNA/RNA residues in this entry.

5.5 Carbohydrates [i](#)

There are no carbohydrates in this entry.

5.6 Ligand geometry [i](#)

2 ligands are modelled in this entry.

In the following table, the Counts columns list the number of bonds (or angles) for which Mogul statistics could be retrieved, the number of bonds (or angles) that are observed in the model and the number of bonds (or angles) that are defined in the chemical component dictionary. The Link column lists molecule types, if any, to which the group is linked. The Z score for a bond length (or angle) is the number of standard deviations the observed value is removed from the expected value. A bond length (or angle) with $|Z| > 2$ is considered an outlier worth inspection. RMSZ is the root-mean-square of all Z scores of the bond lengths (or angles).

Mol	Type	Chain	Res	Link	Bond lengths			Bond angles		
					Counts	RMSZ	$\# Z > 2$	Counts	RMSZ	$\# Z > 2$
2	TUR	A	700[A]	-	23,24,24	2.73	10 (43%)	27,36,36	2.76	9 (33%)
3	BTU	A	701[B]	-	23,24,24	2.73	8 (34%)	27,36,36	2.86	10 (37%)

In the following table, the Chirals column lists the number of chiral outliers, the number of chiral centers analysed, the number of these observed in the model and the number defined in the chemical component dictionary. Similar counts are reported in the Torsion and Rings columns. '-' means no outliers of that kind were identified.

Mol	Type	Chain	Res	Link	Chirals	Torsions	Rings
2	TUR	A	700[A]	-	-	0/11/50/50	0/2/2/2
3	BTU	A	701[B]	-	-	0/11/50/50	0/2/2/2

All (18) bond length outliers are listed below:

Mol	Chain	Res	Type	Atoms	Z	Observed(Å)	Ideal(Å)
3	A	701[B]	BTU	O1-CAV	-8.06	1.22	1.44
2	A	700[A]	TUR	O1-CAV	-7.46	1.23	1.44
2	A	700[A]	TUR	OAN-CAW	-6.05	1.33	1.43
3	A	701[B]	BTU	OAN-CAW	-5.37	1.34	1.43
3	A	701[B]	BTU	OAN-CAT	-5.24	1.31	1.43
2	A	700[A]	TUR	OAN-CAT	-3.96	1.34	1.43

Continued on next page...

Continued from previous page...

Mol	Chain	Res	Type	Atoms	Z	Observed(Å)	Ideal(Å)
2	A	700[A]	TUR	OAC-CAK	-3.49	1.30	1.42
3	A	701[B]	BTU	O5-C1	-3.28	1.33	1.41
2	A	700[A]	TUR	O5-C1	-3.21	1.33	1.41
3	A	701[B]	BTU	O3-C3	-2.90	1.36	1.43
2	A	700[A]	TUR	O3-C3	-2.88	1.36	1.43
3	A	701[B]	BTU	CAJ-CAT	-2.81	1.42	1.51
3	A	701[B]	BTU	OAB-CAJ	-2.38	1.32	1.42
2	A	700[A]	TUR	CAJ-CAT	-2.32	1.43	1.51
2	A	700[A]	TUR	CAK-CAW	-2.31	1.48	1.52
2	A	700[A]	TUR	OAB-CAJ	-2.22	1.32	1.42
2	A	700[A]	TUR	O2-C2	-2.17	1.37	1.43
3	A	701[B]	BTU	O2-C2	-2.13	1.37	1.43

All (19) bond angle outliers are listed below:

Mol	Chain	Res	Type	Atoms	Z	Observed(°)	Ideal(°)
2	A	700[A]	TUR	CAJ-CAT-CAR	-7.74	96.78	115.08
3	A	701[B]	BTU	CAJ-CAT-CAR	-7.37	97.66	115.08
2	A	700[A]	TUR	O5-C1-C2	-4.16	101.73	110.28
3	A	701[B]	BTU	O1-C1-O5	-4.08	100.35	110.68
3	A	701[B]	BTU	O5-C1-C2	-3.96	102.16	110.28
2	A	700[A]	TUR	OAN-CAT-CAJ	-3.65	97.52	108.57
3	A	701[B]	BTU	OAN-CAT-CAJ	-3.59	97.68	108.57
2	A	700[A]	TUR	O1-C1-O5	-3.52	101.77	110.68
3	A	701[B]	BTU	OAB-CAJ-CAT	-3.39	100.13	111.33
2	A	700[A]	TUR	OAB-CAJ-CAT	-2.53	102.96	111.33
2	A	700[A]	TUR	OAH-CAW-OAN	-2.07	105.09	109.37
3	A	701[B]	BTU	C1-O1-CAV	2.48	120.74	116.30
3	A	701[B]	BTU	O5-C5-C4	2.68	114.70	109.68
2	A	700[A]	TUR	O5-C5-C4	2.68	114.71	109.68
2	A	700[A]	TUR	C1-O5-C5	3.05	119.67	113.75
3	A	701[B]	BTU	C1-O5-C5	3.11	119.78	113.75
3	A	701[B]	BTU	OAH-CAW-OAN	4.14	117.91	109.37
3	A	701[B]	BTU	O1-C1-C2	7.39	126.09	108.10
2	A	700[A]	TUR	O1-C1-C2	7.46	126.27	108.10

There are no chirality outliers.

There are no torsion outliers.

There are no ring outliers.

2 monomers are involved in 13 short contacts:

Mol	Chain	Res	Type	Clashes	Symm-Clashes
2	A	700[A]	TUR	8	0
3	A	701[B]	BTU	5	0

5.7 Other polymers [i](#)

There are no such residues in this entry.

5.8 Polymer linkage issues [i](#)

There are no chain breaks in this entry.

6 Fit of model and data [i](#)

6.1 Protein, DNA and RNA chains [i](#)

In the following table, the column labelled ‘#RSRZ> 2’ contains the number (and percentage) of RSRZ outliers, followed by percent RSRZ outliers for the chain as percentile scores relative to all X-ray entries and entries of similar resolution. The OWAB column contains the minimum, median, 95th percentile and maximum values of the occupancy-weighted average B-factor per residue. The column labelled ‘Q< 0.9’ lists the number of (and percentage) of residues with an average occupancy less than 0.9.

Mol	Chain	Analysed	<RSRZ>	#RSRZ>2	OWAB(Å ²)	Q<0.9
1	A	651/655 (99%)	-0.45	16 (2%) 61 67	9, 18, 38, 53	0

All (16) RSRZ outliers are listed below:

Mol	Chain	Res	Type	RSRZ
1	A	343	HIS	5.4
1	A	239	GLY	4.9
1	A	646	GLY	4.4
1	A	240	GLU	3.9
1	A	625	ALA	3.6
1	A	624	SER	3.3
1	A	444	VAL	2.6
1	A	629	ASP	2.6
1	A	238	GLU	2.5
1	A	4	ASP	2.3
1	A	344	HIS	2.2
1	A	645	ALA	2.2
1	A	615	ASP	2.2
1	A	20	ASP	2.1
1	A	19	ASP	2.0
1	A	236	ILE	2.0

6.2 Non-standard residues in protein, DNA, RNA chains [i](#)

There are no non-standard protein/DNA/RNA residues in this entry.

6.3 Carbohydrates [i](#)

There are no carbohydrates in this entry.

6.4 Ligands [i](#)

In the following table, the Atoms column lists the number of modelled atoms in the group and the number defined in the chemical component dictionary. LLDF column lists the quality of electron density of the group with respect to its neighbouring residues in protein, DNA or RNA chains. The B-factors column lists the minimum, median, 95th percentile and maximum values of B factors of atoms in the group. The column labelled 'Q< 0.9' lists the number of atoms with occupancy less than 0.9.

Mol	Type	Chain	Res	Atoms	RSCC	RSR	LLDF	B-factors(Å ²)	Q<0.9
2	TUR	A	700[A]	23/23	0.89	0.15	1.95	17,26,37,39	23
3	BTU	A	701[B]	23/23	0.89	0.15	1.84	10,19,30,33	23

6.5 Other polymers [i](#)

There are no such residues in this entry.