



Full wwPDB X-ray Structure Validation Report ⓘ

Feb 19, 2016 – 07:37 PM GMT

PDB ID : 4UGZ
Title : Structure of rat neuronal nitric oxide synthase heme domain in complex with N1-(3-(2-(6-Amino-4-methylpyridin-2-yl)ethyl)phenyl)-N1, N2-dimethylethane-1,2-diamine
Authors : Li, H.; Poulos, T.L.
Deposited on : 2015-03-23
Resolution : 2.08 Å(reported)

This is a Full wwPDB X-ray Structure Validation Report for a publicly released PDB entry.
We welcome your comments at validation@mail.wwpdb.org
A user guide is available at
<http://wwpdb.org/validation/2016/XrayValidationReportHelp>
with specific help available everywhere you see the ⓘ symbol.

The following versions of software and data (see [references ⓘ](#)) were used in the production of this report:

MolProbity	:	4.02b-467
Mogul	:	unknown
Xtriage (Phenix)	:	1.9-1692
EDS	:	rb-20026982
Percentile statistics	:	20151230.v01 (using entries in the PDB archive December 30th 2015)
Refmac	:	5.8.0135
CCP4	:	6.5.0
Ideal geometry (proteins)	:	Engh & Huber (2001)
Ideal geometry (DNA, RNA)	:	Parkinson et al. (1996)
Validation Pipeline (wwPDB-VP)	:	rb-20026982

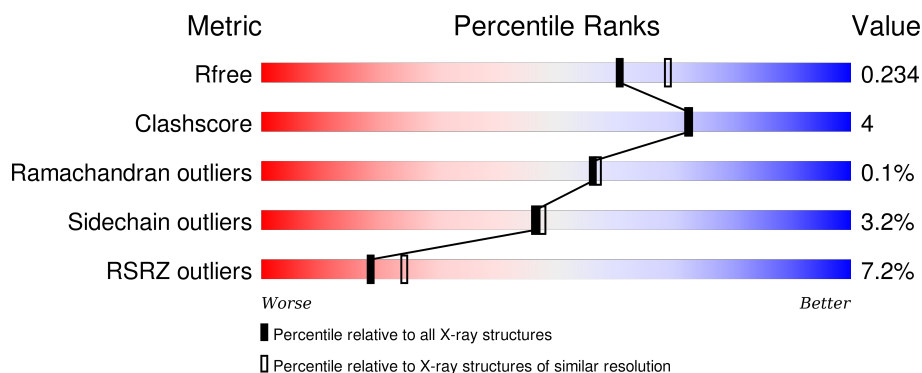
1 Overall quality at a glance

The following experimental techniques were used to determine the structure:

X-RAY DIFFRACTION

The reported resolution of this entry is 2.08 Å.

Percentile scores (ranging between 0-100) for global validation metrics of the entry are shown in the following graphic. The table shows the number of entries on which the scores are based.



Metric	Whole archive (#Entries)	Similar resolution (#Entries, resolution range(Å))
R_{free}	91344	4546 (2.10-2.06)
Clashscore	102246	5101 (2.10-2.06)
Ramachandran outliers	100387	5048 (2.10-2.06)
Sidechain outliers	100360	5049 (2.10-2.06)
RSRZ outliers	91569	4556 (2.10-2.06)

The table below summarises the geometric issues observed across the polymeric chains and their fit to the electron density. The red, orange, yellow and green segments on the lower bar indicate the fraction of residues that contain outliers for ≥ 3 , 2, 1 and 0 types of geometric quality criteria. A grey segment represents the fraction of residues that are not modelled. The numeric value for each fraction is indicated below the corresponding segment, with a dot representing fractions $\leq 5\%$. The upper red bar (where present) indicates the fraction of residues that have poor fit to the electron density. The numeric value is given above the bar.

Mol	Chain	Length	Quality of chain
1	A	422	<div> <div>11%</div> <div> <div></div> <div>85%</div> <div>12%</div> <div>.</div> </div> </div>
1	B	422	<div> <div>3%</div> <div> <div></div> <div>86%</div> <div>10%</div> <div>..</div> </div> </div>

The following table lists non-polymeric compounds, carbohydrate monomers and non-standard residues in protein, DNA, RNA chains that are outliers for geometric or electron-density-fit criteria:

Mol	Type	Chain	Res	Chirality	Geometry	Clashes	Electron density
2	HEM	B	750	-	-	-	X
5	ACT	A	860	-	-	-	X
5	ACT	B	860	-	-	-	X

2 Entry composition [i](#)

There are 7 unique types of molecules in this entry. The entry contains 7102 atoms, of which 0 are hydrogens and 0 are deuteriums.

In the tables below, the ZeroOcc column contains the number of atoms modelled with zero occupancy, the AltConf column contains the number of residues with at least one atom in alternate conformation and the Trace column contains the number of residues modelled with at most 2 atoms.

- Molecule 1 is a protein called NEURONAL NITRIC OXIDE SYNTHASE.

Mol	Chain	Residues	Atoms					ZeroOcc	AltConf	Trace
1	A	408	Total	C	N	O	S	0	3	1
			3328	2130	568	608	22			
1	B	411	Total	C	N	O	S	0	0	0
			3345	2140	574	610	21			

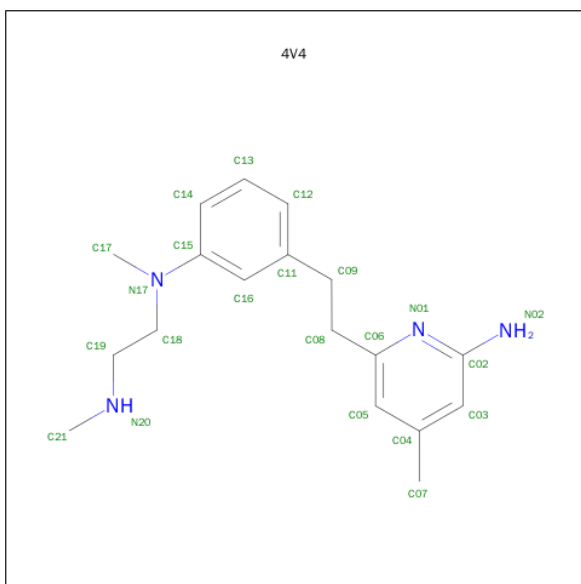
- Molecule 2 is PROTOPORPHYRIN IX CONTAINING FE (three-letter code: HEM) (formula: $C_{34}H_{32}FeN_4O_4$).





Mol	Chain	Residues	Atoms				ZeroOcc	AltConf
3	A	1	Total 17	C 9	N 5	O 3	0	0
3	B	1	Total 17	C 9	N 5	O 3	0	0

- Molecule 4 is N1-(3-(2-(6-AMINO-4-METHYLPYRIDIN-2-YL)ETHYL)PHENYL)-N1,N2-DIMETHYLETHANE-1,2-DIAMINE (three-letter code: 4V4) (formula: C₁₈H₂₆N₄).



Mol	Chain	Residues	Atoms			ZeroOcc	AltConf
4	A	1	Total	C	N	0	0
			22	18	4		

Continued on next page...

Continued from previous page...

Mol	Chain	Residues	Atoms			ZeroOcc	AltConf
4	B	1	Total	C	N	0	0
			22	18	4		

- Molecule 5 is ACETATE ION (three-letter code: ACT) (formula: $C_2H_3O_2$).



Mol	Chain	Residues	Atoms			ZeroOcc	AltConf
5	A	1	Total	C	O	0	0
			4	2	2		
5	B	1	Total	C	O	0	0
			4	2	2		

- Molecule 6 is ZINC ION (three-letter code: ZN) (formula: Zn).

Mol	Chain	Residues	Atoms		ZeroOcc	AltConf
6	A	1	Total	Zn	0	0
			1	1		

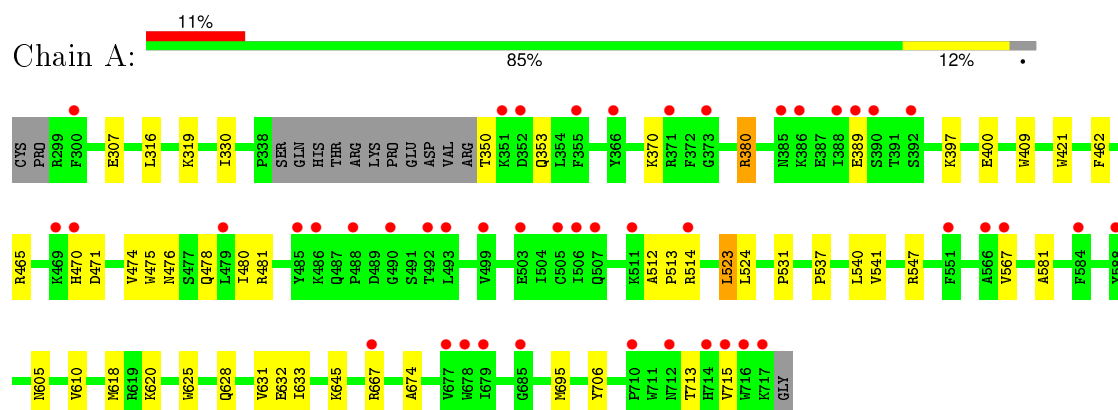
- Molecule 7 is water.

Mol	Chain	Residues	Atoms		ZeroOcc	AltConf
7	A	107	Total	O	0	0
			107	107		
7	B	149	Total	O	0	0
			149	149		

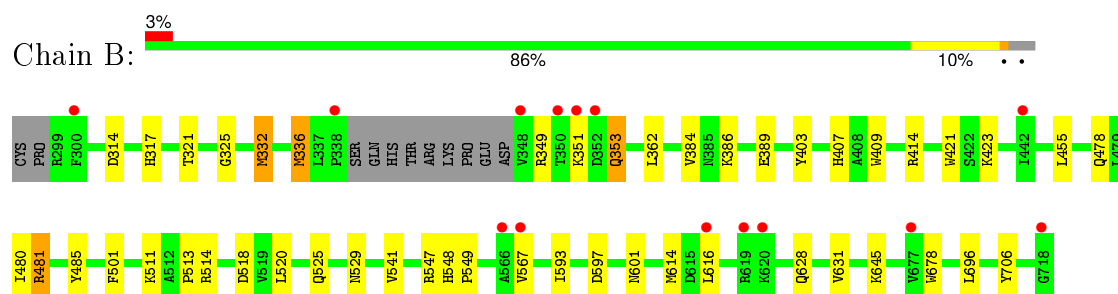
3 Residue-property plots

These plots are drawn for all protein, RNA and DNA chains in the entry. The first graphic for a chain summarises the proportions of errors displayed in the second graphic. The second graphic shows the sequence view annotated by issues in geometry and electron density. Residues are color-coded according to the number of geometric quality criteria for which they contain at least one outlier: green = 0, yellow = 1, orange = 2 and red = 3 or more. A red dot above a residue indicates a poor fit to the electron density ($RSRZ > 2$). Stretches of 2 or more consecutive residues without any outlier are shown as a green connector. Residues present in the sample, but not in the model, are shown in grey.

• Molecule 1: NEURONAL NITRIC OXIDE SYNTHASE



• Molecule 1: NEURONAL NITRIC OXIDE SYNTHASE



4 Data and refinement statistics

Property	Value	Source
Space group	P 21 21 21	Depositor
Cell constants a, b, c, α , β , γ	51.87Å 111.23Å 164.88Å 90.00° 90.00° 90.00°	Depositor
Resolution (Å)	40.84 – 2.08 40.84 – 2.08	Depositor EDS
% Data completeness (in resolution range)	97.7 (40.84-2.08) 97.9 (40.84-2.08)	Depositor EDS
R_{merge}	0.10	Depositor
R_{sym}	(Not available)	Depositor
$\langle I/\sigma(I) \rangle$ ¹	1.28 (at 2.08Å)	Xtriage
Refinement program	PHENIX (PHENIX.REFINE)	Depositor
R, R_{free}	0.188 , 0.227 0.194 , 0.234	Depositor DCC
R_{free} test set	2836 reflections (5.20%)	DCC
Wilson B-factor (Å ²)	39.8	Xtriage
Anisotropy	1.052	Xtriage
Bulk solvent k_{sol} (e/Å ³), B_{sol} (Å ²)	0.36 , 51.6	EDS
Estimated twinning fraction	No twinning to report.	Xtriage
L-test for twinning ²	$\langle L \rangle = 0.49$, $\langle L^2 \rangle = 0.32$	Xtriage
Outliers	9 of 57340 reflections (0.016%)	Xtriage
F_o, F_c correlation	0.97	EDS
Total number of atoms	7102	wwPDB-VP
Average B, all atoms (Å ²)	46.0	wwPDB-VP

Xtriage's analysis on translational NCS is as follows: *The largest off-origin peak in the Patterson function is 5.11% of the height of the origin peak. No significant pseudotranslation is detected.*

¹Intensities estimated from amplitudes.

²Theoretical values of $\langle |L| \rangle$, $\langle L^2 \rangle$ for acentric reflections are 0.5, 0.375 respectively for untwinned datasets, and 0.333, 0.2 for perfectly twinned datasets.

5 Model quality

5.1 Standard geometry

Bond lengths and bond angles in the following residue types are not validated in this section: 4V4, ZN, H4B, HEM, ACT

The Z score for a bond length (or angle) is the number of standard deviations the observed value is removed from the expected value. A bond length (or angle) with $|Z| > 5$ is considered an outlier worth inspection. RMSZ is the root-mean-square of all Z scores of the bond lengths (or angles).

Mol	Chain	Bond lengths		Bond angles	
		RMSZ	# Z >5	RMSZ	# Z >5
1	A	0.38	0/3430	0.51	0/4654
1	B	0.40	0/3438	0.51	0/4661
All	All	0.39	0/6868	0.51	0/9315

There are no bond length outliers.

There are no bond angle outliers.

There are no chirality outliers.

There are no planarity outliers.

5.2 Too-close contacts

In the following table, the Non-H and H(model) columns list the number of non-hydrogen atoms and hydrogen atoms in the chain respectively. The H(added) column lists the number of hydrogen atoms added and optimized by MolProbity. The Clashes column lists the number of clashes within the asymmetric unit, whereas Symm-Clashes lists symmetry related clashes.

Mol	Chain	Non-H	H(model)	H(added)	Clashes	Symm-Clashes
1	A	3328	0	3238	27	0
1	B	3345	0	3259	26	0
2	A	43	0	30	4	0
2	B	43	0	30	5	0
3	A	17	0	15	0	0
3	B	17	0	15	1	0
4	A	22	0	26	3	0
4	B	22	0	26	3	0
5	A	4	0	3	0	0
5	B	4	0	3	1	0
6	A	1	0	0	0	0

Continued on next page...

Continued from previous page...

Mol	Chain	Non-H	H(model)	H(added)	Clashes	Symm-Clashes
7	A	107	0	0	1	0
7	B	149	0	0	0	0
All	All	7102	0	6645	56	0

The all-atom clashscore is defined as the number of clashes found per 1000 atoms (including hydrogen atoms). The all-atom clashscore for this structure is 4.

All (56) close contacts within the same asymmetric unit are listed below, sorted by their clash magnitude.

Atom-1	Atom-2	Interatomic distance (Å)	Clash overlap (Å)
1:A:330:ILE:HD11	1:B:696:LEU:HD22	1.56	0.86
1:A:523:LEU:HD22	1:A:531:PRO:HB2	1.61	0.80
1:B:706:TYR:OH	2:B:750:HEM:O1D	2.03	0.74
2:B:750:HEM:HHC	2:B:750:HEM:HBB2	1.73	0.70
1:A:706:TYR:OH	2:A:750:HEM:O1D	2.10	0.69
1:B:478:GLN:HB2	1:B:481:ARG:HG3	1.75	0.68
2:A:750:HEM:HBB2	2:A:750:HEM:HHC	1.77	0.66
2:A:750:HEM:HMC2	2:A:750:HEM:HBC2	1.78	0.66
1:B:336:MET:HE2	3:B:760:H4B:H9	1.82	0.60
1:A:478:GLN:HB2	1:A:481:ARG:HG3	1.84	0.59
1:B:567:VAL:HG23	4:B:800:4V4:H05	1.85	0.57
1:A:316:LEU:HD12	1:A:319:LYS:HD2	1.86	0.57
1:A:307[A]:GLU:OE2	1:B:601:ASN:ND2	2.37	0.55
1:A:380:ARG:HD3	1:A:400:GLU:OE2	2.06	0.55
2:B:750:HEM:HBD2	4:B:800:4V4:C14	2.37	0.54
1:B:593:ILE:HA	1:B:597:ASP:HB2	1.92	0.52
1:A:480:ILE:HD13	1:A:541:VAL:HG13	1.93	0.51
1:B:414:ARG:HD3	1:B:678:TRP:CD2	2.45	0.51
1:A:475:TRP:HB2	1:A:523:LEU:HB3	1.92	0.51
1:A:350:THR:N	1:A:353:GLN:OE1	2.44	0.50
1:A:632:GLU:OE2	1:B:628:GLN:NE2	2.46	0.48
1:A:465:ARG:NH2	1:A:471:ASP:OD2	2.46	0.48
1:A:537:PRO:HB2	1:A:540:LEU:HG	1.96	0.47
1:B:353:GLN:HB3	1:B:353:GLN:HE21	1.53	0.47
1:A:628:GLN:HG3	1:B:631:VAL:HG11	1.95	0.47
1:A:567:VAL:HG23	4:A:800:4V4:H05	1.97	0.46
1:A:380:ARG:NH1	1:A:397:LYS:HG2	2.31	0.46
1:A:605:ASN:ND2	7:A:2076:HOH:O	2.48	0.46
1:B:525:GLN:HG3	1:B:529:ASN:O	2.16	0.46
1:A:674:ALA:HB3	1:A:695:MET:HB3	1.98	0.46
1:A:370:LYS:HE3	1:A:370:LYS:HB2	1.73	0.46

Continued on next page...

Continued from previous page...

Atom-1	Atom-2	Interatomic distance (Å)	Clash overlap (Å)
1:A:462:PHE:HB2	1:A:581:ALA:HB3	1.96	0.45
2:B:750:HEM:HBA1	4:B:800:4V4:H09	1.97	0.45
1:B:336:MET:HE2	1:B:336:MET:HB2	1.86	0.45
4:A:800:4V4:H16	4:A:800:4V4:H18	1.80	0.44
1:B:480:ILE:HD13	1:B:541:VAL:HG13	1.99	0.44
1:B:614:MET:HE2	1:B:616:LEU:HD21	1.99	0.44
1:B:513:PRO:HG2	1:B:518:ASP:CG	2.38	0.44
1:B:314:ASP:OD1	1:B:317:HIS:ND1	2.39	0.44
1:A:409:TRP:CE3	1:A:421:TRP:HA	2.52	0.43
1:A:512:ALA:HA	1:A:513:PRO:HD3	1.91	0.43
1:A:474:VAL:HG22	1:A:524:LEU:HD22	2.00	0.43
1:B:325:GLY:O	1:B:332:MET:HG3	2.19	0.43
1:B:501:PHE:HD2	1:B:520:LEU:HD13	1.83	0.42
1:A:524:LEU:O	1:A:531:PRO:HA	2.19	0.42
2:A:750:HEM:HBD1	4:A:800:4V4:C14	2.49	0.42
1:A:618:MET:HG2	1:A:625:TRP:CD2	2.54	0.42
1:A:610:VAL:HG21	1:A:633:ILE:HD11	2.01	0.42
1:A:631:VAL:HG11	1:B:628:GLN:HG3	2.02	0.41
2:B:750:HEM:HMB2	5:B:860:ACT:H2	2.01	0.41
1:B:409:TRP:CE3	1:B:421:TRP:HA	2.55	0.41
1:B:548:HIS:CG	1:B:549:PRO:HD2	2.56	0.41
1:B:386:LYS:HA	1:B:389:GLU:HG2	2.02	0.41
1:B:403:TYR:CE1	1:B:407:HIS:CE1	3.09	0.41
1:B:362:LEU:HD11	1:B:384:VAL:HG21	2.04	0.40
1:B:485:TYR:CZ	1:B:514:ARG:HA	2.56	0.40

There are no symmetry-related clashes.

5.3 Torsion angles

5.3.1 Protein backbone

In the following table, the Percentiles column shows the percent Ramachandran outliers of the chain as a percentile score with respect to all X-ray entries followed by that with respect to entries of similar resolution.

The Analysed column shows the number of residues for which the backbone conformation was analysed, and the total number of residues.

Mol	Chain	Analysed	Favoured	Allowed	Outliers	Percentiles	
1	A	407/422 (96%)	392 (96%)	14 (3%)	1 (0%)	52	52

Continued on next page...

Continued from previous page...

Mol	Chain	Analysed	Favoured	Allowed	Outliers	Percentiles	
1	B	407/422 (96%)	394 (97%)	13 (3%)	0	100	100
All	All	814/844 (96%)	786 (97%)	27 (3%)	1 (0%)	56	57

All (1) Ramachandran outliers are listed below:

Mol	Chain	Res	Type
1	A	514	ARG

5.3.2 Protein sidechains ⓘ

In the following table, the Percentiles column shows the percent sidechain outliers of the chain as a percentile score with respect to all X-ray entries followed by that with respect to entries of similar resolution.

The Analysed column shows the number of residues for which the sidechain conformation was analysed, and the total number of residues.

Mol	Chain	Analysed	Rotameric	Outliers	Percentiles	
1	A	366/377 (97%)	355 (97%)	11 (3%)	48	50
1	B	366/377 (97%)	354 (97%)	12 (3%)	45	46
All	All	732/754 (97%)	709 (97%)	23 (3%)	46	49

All (23) residues with a non-rotameric sidechain are listed below:

Mol	Chain	Res	Type
1	A	380	ARG
1	A	389	GLU
1	A	470	HIS
1	A	476	ASN
1	A	523	LEU
1	A	547	ARG
1	A	620	LYS
1	A	645	LYS
1	A	667	ARG
1	A	713	THR
1	A	715	VAL
1	B	321	THR
1	B	332	MET
1	B	336	MET
1	B	349	ARG

Continued on next page...

Continued from previous page...

Mol	Chain	Res	Type
1	B	351	LYS
1	B	353	GLN
1	B	423	LYS
1	B	455	LEU
1	B	481	ARG
1	B	511	LYS
1	B	547	ARG
1	B	645	LYS

Some sidechains can be flipped to improve hydrogen bonding and reduce clashes. All (2) such sidechains are listed below:

Mol	Chain	Res	Type
1	A	425	GLN
1	A	605	ASN

5.3.3 RNA [i](#)

There are no RNA molecules in this entry.

5.4 Non-standard residues in protein, DNA, RNA chains [i](#)

There are no non-standard protein/DNA/RNA residues in this entry.

5.5 Carbohydrates [i](#)

There are no carbohydrates in this entry.

5.6 Ligand geometry [i](#)

Of 9 ligands modelled in this entry, 1 is monoatomic - leaving 8 for Mogul analysis.

In the following table, the Counts columns list the number of bonds (or angles) for which Mogul statistics could be retrieved, the number of bonds (or angles) that are observed in the model and the number of bonds (or angles) that are defined in the chemical component dictionary. The Link column lists molecule types, if any, to which the group is linked. The Z score for a bond length (or angle) is the number of standard deviations the observed value is removed from the expected value. A bond length (or angle) with $|Z| > 2$ is considered an outlier worth inspection. RMSZ is the root-mean-square of all Z scores of the bond lengths (or angles).

Mol	Type	Chain	Res	Link	Bond lengths			Bond angles		
					Counts	RMSZ	# Z > 2	Counts	RMSZ	# Z > 2
2	HEM	A	750	1	24,50,50	2.28	6 (25%)	16,82,82	1.52	2 (12%)
3	H4B	A	760	-	15,18,18	0.74	0	12,26,26	2.45	5 (41%)
4	4V4	A	800	-	23,23,23	0.48	0	30,30,30	1.37	4 (13%)
5	ACT	A	860	-	0,3,3	0.00	-	0,3,3	0.00	-
2	HEM	B	750	1	24,50,50	2.27	7 (29%)	16,82,82	1.53	3 (18%)
3	H4B	B	760	-	15,18,18	0.92	1 (6%)	12,26,26	2.44	5 (41%)
4	4V4	B	800	-	23,23,23	0.55	0	30,30,30	1.37	5 (16%)
5	ACT	B	860	-	0,3,3	0.00	-	0,3,3	0.00	-

In the following table, the Chirals column lists the number of chiral outliers, the number of chiral centers analysed, the number of these observed in the model and the number defined in the chemical component dictionary. Similar counts are reported in the Torsion and Rings columns. '-' means no outliers of that kind were identified.

Mol	Type	Chain	Res	Link	Chirals	Torsions	Rings
2	HEM	A	750	1	-	0/6/54/54	0/0/8/8
3	H4B	A	760	-	-	0/8/17/17	0/2/2/2
4	4V4	A	800	-	-	0/13/13/13	0/2/2/2
5	ACT	A	860	-	-	0/0/0/0	0/0/0/0
2	HEM	B	750	1	-	0/6/54/54	0/0/8/8
3	H4B	B	760	-	-	0/8/17/17	0/2/2/2
4	4V4	B	800	-	-	0/13/13/13	0/2/2/2
5	ACT	B	860	-	-	0/0/0/0	0/0/0/0

All (14) bond length outliers are listed below:

Mol	Chain	Res	Type	Atoms	Z	Observed(Å)	Ideal(Å)
2	A	750	HEM	C3B-C2B	-4.80	1.34	1.40
2	B	750	HEM	C3B-C2B	-4.35	1.34	1.40
2	B	750	HEM	C3C-C2C	-3.96	1.35	1.40
2	A	750	HEM	C3C-C2C	-3.71	1.35	1.40
3	B	760	H4B	C4-C4A	-2.13	1.38	1.41
2	B	750	HEM	CMC-C2C	2.04	1.56	1.51
2	A	750	HEM	CMC-C2C	2.07	1.56	1.51
2	B	750	HEM	C4D-ND	2.12	1.39	1.36
2	B	750	HEM	C3B-CAB	3.54	1.55	1.47
2	A	750	HEM	C3C-CAC	3.83	1.55	1.47
2	A	750	HEM	C3B-CAB	3.87	1.56	1.47
2	B	750	HEM	C3C-CAC	4.03	1.56	1.47
2	B	750	HEM	C3D-C2D	5.26	1.53	1.37
2	A	750	HEM	C3D-C2D	5.40	1.53	1.37

All (24) bond angle outliers are listed below:

Mol	Chain	Res	Type	Atoms	Z	Observed(°)	Ideal(°)
2	A	750	HEM	CAD-CBD-CGD	-3.58	105.82	112.78
3	A	760	H4B	N3-C2-N1	-3.25	120.20	125.51
2	B	750	HEM	CAD-CBD-CGD	-3.20	106.55	112.78
3	B	760	H4B	N3-C2-N1	-2.90	120.77	125.51
2	A	750	HEM	CBA-CAA-C2A	-2.85	107.49	112.49
4	B	800	4V4	C19-C18-N17	-2.29	103.19	112.36
4	B	800	4V4	C05-C06-N01	-2.24	120.41	122.90
2	B	750	HEM	CAD-C3D-C2D	-2.23	122.64	129.00
4	A	800	4V4	C05-C06-N01	-2.13	120.54	122.90
2	B	750	HEM	CAA-C2A-C3A	-2.10	123.00	129.00
4	A	800	4V4	C08-C06-N01	2.09	118.90	115.71
4	B	800	4V4	C08-C06-N01	2.33	119.26	115.71
3	B	760	H4B	C4A-C8A-N8	2.52	120.93	118.26
3	B	760	H4B	C2-N1-C8A	2.55	120.35	114.63
3	A	760	H4B	C2-N1-C8A	2.93	121.21	114.63
3	A	760	H4B	C4A-C8A-N8	3.44	121.91	118.26
3	B	760	H4B	C4-N3-C2	3.55	120.04	115.88
4	B	800	4V4	C02-N01-C06	3.64	121.04	118.20
4	A	800	4V4	C02-N01-C06	3.75	121.12	118.20
4	A	800	4V4	C21-N20-C19	3.76	119.23	111.78
4	B	800	4V4	C21-N20-C19	3.87	119.46	111.78
3	A	760	H4B	C4-N3-C2	3.98	120.55	115.88
3	A	760	H4B	C4-C4A-C8A	4.37	118.45	114.61
3	B	760	H4B	C4-C4A-C8A	5.54	119.49	114.61

There are no chirality outliers.

There are no torsion outliers.

There are no ring outliers.

6 monomers are involved in 13 short contacts:

Mol	Chain	Res	Type	Clashes	Symm-Clashes
2	A	750	HEM	4	0
4	A	800	4V4	3	0
2	B	750	HEM	5	0
3	B	760	H4B	1	0
4	B	800	4V4	3	0
5	B	860	ACT	1	0

5.7 Other polymers

There are no such residues in this entry.

5.8 Polymer linkage issues

There are no chain breaks in this entry.

6 Fit of model and data ⓘ

6.1 Protein, DNA and RNA chains ⓘ

In the following table, the column labelled ‘#RSRZ> 2’ contains the number (and percentage) of RSRZ outliers, followed by percent RSRZ outliers for the chain as percentile scores relative to all X-ray entries and entries of similar resolution. The OWAB column contains the minimum, median, 95th percentile and maximum values of the occupancy-weighted average B-factor per residue. The column labelled ‘Q< 0.9’ lists the number of (and percentage) of residues with an average occupancy less than 0.9.

Mol	Chain	Analysed	<RSRZ>	#RSRZ>2	OWAB(Å ²)	Q<0.9
1	A	408/422 (96%)	0.53	45 (11%) 7 10	19, 49, 94, 125	0
1	B	411/422 (97%)	0.07	14 (3%) 49 57	20, 39, 70, 95	0
All	All	819/844 (97%)	0.30	59 (7%) 18 24	19, 43, 88, 125	0

All (59) RSRZ outliers are listed below:

Mol	Chain	Res	Type	RSRZ
1	B	300	PHE	7.0
1	A	355	PHE	5.4
1	A	715	VAL	5.2
1	A	717	LYS	5.1
1	A	488	PRO	4.8
1	A	716	TRP	4.8
1	B	350	THR	3.7
1	A	493	LEU	3.7
1	B	619	ARG	3.6
1	A	503	GLU	3.4
1	A	551	PHE	3.4
1	A	392	SER	3.3
1	A	714	HIS	3.3
1	A	712	ASN	3.2
1	A	678	TRP	3.2
1	A	386	LYS	3.1
1	A	506	ILE	3.0
1	A	492	THR	2.9
1	A	352	ASP	2.9
1	A	567	VAL	2.9
1	A	390	SER	2.9
1	A	679	ILE	2.8
1	A	490	GLY	2.8
1	B	348	VAL	2.8

Continued on next page...

Continued from previous page...

Mol	Chain	Res	Type	RSRZ
1	A	486	LYS	2.8
1	A	389	GLU	2.8
1	A	351	LYS	2.7
1	A	507	GLN	2.7
1	A	388	ILE	2.6
1	A	373	GLY	2.6
1	A	677	VAL	2.6
1	A	366	TYR	2.6
1	A	469	LYS	2.5
1	B	351	LYS	2.4
1	A	385	ASN	2.4
1	A	566	ALA	2.3
1	B	338	PRO	2.3
1	B	718	GLY	2.3
1	B	677	VAL	2.3
1	B	616	LEU	2.3
1	B	352	ASP	2.3
1	A	371	ARG	2.2
1	A	479	LEU	2.2
1	B	567	VAL	2.2
1	A	667	ARG	2.2
1	A	485	TYR	2.1
1	A	584	PHE	2.1
1	A	588	TYR	2.1
1	A	710	PRO	2.1
1	A	514	ARG	2.1
1	A	505	CYS	2.1
1	A	685	GLY	2.1
1	A	470	HIS	2.1
1	B	442	ILE	2.0
1	A	499	VAL	2.0
1	A	300	PHE	2.0
1	B	566	ALA	2.0
1	A	511	LYS	2.0
1	B	620	LYS	2.0

6.2 Non-standard residues in protein, DNA, RNA chains ⓘ

There are no non-standard protein/DNA/RNA residues in this entry.

6.3 Carbohydrates [i](#)

There are no carbohydrates in this entry.

6.4 Ligands [i](#)

In the following table, the Atoms column lists the number of modelled atoms in the group and the number defined in the chemical component dictionary. LLDF column lists the quality of electron density of the group with respect to its neighbouring residues in protein, DNA or RNA chains. The B-factors column lists the minimum, median, 95th percentile and maximum values of B factors of atoms in the group. The column labelled 'Q< 0.9' lists the number of atoms with occupancy less than 0.9.

Mol	Type	Chain	Res	Atoms	RSCC	RSR	LLDF	B-factors(\AA^2)	Q<0.9
5	ACT	B	860	4/4	0.93	0.23	5.30	28,32,36,43	0
5	ACT	A	860	4/4	0.96	0.25	4.91	17,20,36,39	0
2	HEM	B	750	43/43	0.96	0.20	2.48	18,31,50,52	0
4	4V4	A	800	22/22	0.95	0.26	1.47	27,40,61,66	0
2	HEM	A	750	43/43	0.96	0.22	1.22	21,30,46,52	0
4	4V4	B	800	22/22	0.93	0.20	1.03	23,34,52,57	0
3	H4B	B	760	17/17	0.94	0.17	0.58	18,31,37,40	0
3	H4B	A	760	17/17	0.93	0.16	0.20	31,36,42,42	0
6	ZN	A	900	1/1	1.00	0.07	-0.84	33,33,33,33	0

6.5 Other polymers [i](#)

There are no such residues in this entry.