



# Full wwPDB X-ray Structure Validation Report ⓘ

Feb 1, 2016 – 01:40 PM GMT

PDB ID : 3UJO  
Title : Galactose-specific seed lectin from Dolichos lablab in complex with adenine and galactose  
Authors : Shetty, K.N.; Latha, V.L.; Rao, R.N.; Nadimpalli, S.K.; Suguna, K.  
Deposited on : 2011-11-08  
Resolution : 2.00 Å(reported)

This is a Full wwPDB X-ray Structure Validation Report for a publicly released PDB entry.  
We welcome your comments at [validation@mail.wwpdb.org](mailto:validation@mail.wwpdb.org)  
A user guide is available at  
<http://wwpdb.org/validation/2016/XrayValidationReportHelp>  
with specific help available everywhere you see the ⓘ symbol.

---

The following versions of software and data (see [references ⓘ](#)) were used in the production of this report:

MolProbity : 4.02b-467  
Mogul : 1.7 (RC4), CSD as536be (2015)  
Xtriage (Phenix) : 1.9-1692  
EDS : rb-20026688  
Percentile statistics : 20151230.v01 (using entries in the PDB archive December 30th 2015)  
Refmac : 5.8.0135  
CCP4 : 6.5.0  
Ideal geometry (proteins) : Engh & Huber (2001)  
Ideal geometry (DNA, RNA) : Parkinson et al. (1996)  
Validation Pipeline (wwPDB-VP) : trunk26865

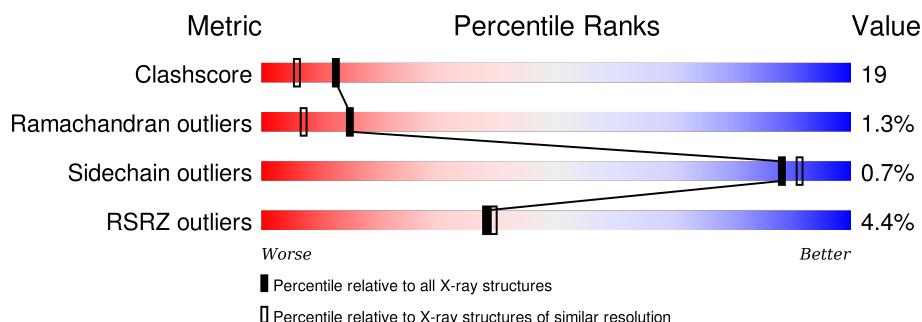
# 1 Overall quality at a glance

The following experimental techniques were used to determine the structure:

## *X-RAY DIFFRACTION*

The reported resolution of this entry is 2.00 Å.

Percentile scores (ranging between 0-100) for global validation metrics of the entry are shown in the following graphic. The table shows the number of entries on which the scores are based.



Metric	Whole archive (#Entries)	Similar resolution (#Entries, resolution range(Å))
Clashscore	102246	7340 (2.00-2.00)
Ramachandran outliers	100387	7248 (2.00-2.00)
Sidechain outliers	100360	7247 (2.00-2.00)
RSRZ outliers	91569	6262 (2.00-2.00)

The table below summarises the geometric issues observed across the polymeric chains and their fit to the electron density. The red, orange, yellow and green segments on the lower bar indicate the fraction of residues that contain outliers for  $\geq 3$ , 2, 1 and 0 types of geometric quality criteria. A grey segment represents the fraction of residues that are not modelled. The numeric value for each fraction is indicated below the corresponding segment, with a dot representing fractions  $\leq 5\%$ . The upper red bar (where present) indicates the fraction of residues that have poor fit to the electron density. The numeric value is given above the bar.

Mol	Chain	Length	Quality of chain
1	A	281	<div> <div>11%</div> <div>73% 16% 10%</div> </div>
1	B	281	<div> <div>%</div> <div>72% 18% 10%</div> </div>
1	C	281	<div> <div>2%</div> <div>70% 18% 11%</div> </div>
1	D	281	<div> <div>%</div> <div>74% 15% 11%</div> </div>

The following table lists non-polymeric compounds, carbohydrate monomers and non-standard residues in protein, DNA, RNA chains that are outliers for geometric or electron-density-fit criteria:

Mol	Type	Chain	Res	Chirality	Geometry	Clashes	Electron density
2	ADE	B	301	-	-	-	X
2	ADE	C	301	-	-	-	X
3	GAL	B	302[B]	-	-	-	X

## 2 Entry composition [i](#)

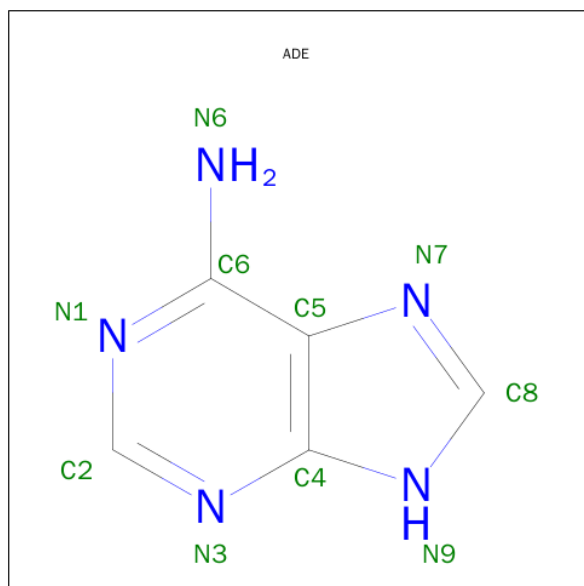
There are 8 unique types of molecules in this entry. The entry contains 7949 atoms, of which 0 are hydrogens and 0 are deuteriums.

In the tables below, the ZeroOcc column contains the number of atoms modelled with zero occupancy, the AltConf column contains the number of residues with at least one atom in alternate conformation and the Trace column contains the number of residues modelled with at most 2 atoms.

- Molecule 1 is a protein called Legume lectin.

Mol	Chain	Residues	Atoms				ZeroOcc	AltConf	Trace
1	A	253	Total	C	N	O	0	0	0
			1926	1224	316	386			
1	B	253	Total	C	N	O	0	0	0
			1927	1224	317	386			
1	C	250	Total	C	N	O	0	0	0
			1904	1213	314	377			
1	D	250	Total	C	N	O	0	0	0
			1904	1213	314	377			

- Molecule 2 is ADENINE (three-letter code: ADE) (formula: C<sub>5</sub>H<sub>5</sub>N<sub>5</sub>).



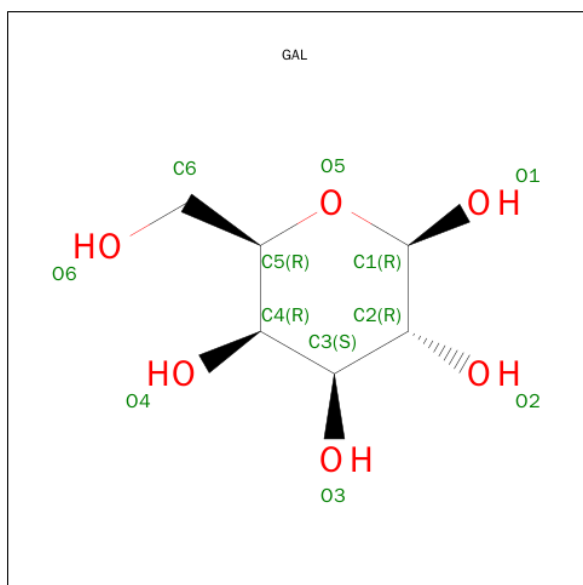
Mol	Chain	Residues	Atoms			ZeroOcc	AltConf
2	A	1	Total	C	N	0	0
			10	5	5		
2	B	1	Total	C	N	0	0
			10	5	5		

*Continued on next page...*

Continued from previous page...

Mol	Chain	Residues	Atoms			ZeroOcc	AltConf
2	C	1	Total	C	N	0	0
			10	5	5		
2	D	1	Total	C	N	0	0
			10	5	5		

- Molecule 3 is SUGAR (BETA-D-GALACTOSE) (three-letter code: GAL) (formula: C<sub>6</sub>H<sub>12</sub>O<sub>6</sub>).



Mol	Chain	Residues	Atoms			ZeroOcc	AltConf
3	A	1	Total	C	O	0	1
			12	6	6		
3	B	1	Total	C	O	0	1
			12	6	6		
3	C	1	Total	C	O	0	1
			12	6	6		
3	D	1	Total	C	O	0	1
			12	6	6		

- Molecule 4 is MANGANESE (II) ION (three-letter code: MN) (formula: Mn).

Mol	Chain	Residues	Atoms		ZeroOcc	AltConf
4	B	1	Total	Mn	0	0
			1	1		
4	A	1	Total	Mn	0	0
			1	1		
4	D	1	Total	Mn	0	0
			1	1		

Continued on next page...

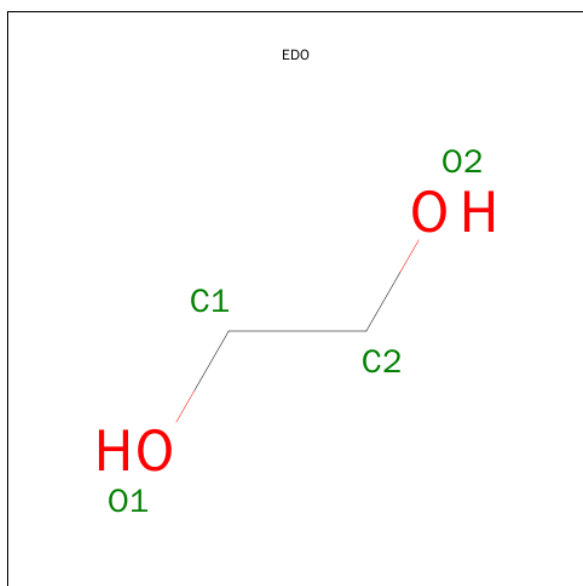
*Continued from previous page...*

Mol	Chain	Residues	Atoms		ZeroOcc	AltConf
4	C	1	Total	Mn	0	0
			1	1		

- Molecule 5 is CALCIUM ION (three-letter code: CA) (formula: Ca).

Mol	Chain	Residues	Atoms		ZeroOcc	AltConf
5	B	1	Total	Ca	0	0
			1	1		
5	A	1	Total	Ca	0	0
			1	1		
5	D	1	Total	Ca	0	0
			1	1		
5	C	1	Total	Ca	0	0
			1	1		

- Molecule 6 is 1,2-ETHANEDIOL (three-letter code: EDO) (formula: C<sub>2</sub>H<sub>6</sub>O<sub>2</sub>).



Mol	Chain	Residues	Atoms			ZeroOcc	AltConf
6	A	1	Total	C	O	0	0
			4	2	2		
6	B	1	Total	C	O	0	0
			4	2	2		
6	C	1	Total	C	O	0	0
			4	2	2		
6	D	1	Total	C	O	0	0
			4	2	2		

*Continued on next page...*

Continued from previous page...

Mol	Chain	Residues	Atoms			ZeroOcc	AltConf
6	D	1	Total	C	O	0	0
			4	2	2		

- Molecule 7 is DI(HYDROXYETHYL)ETHER (three-letter code: PEG) (formula: C<sub>4</sub>H<sub>10</sub>O<sub>3</sub>).



Mol	Chain	Residues	Atoms			ZeroOcc	AltConf
7	B	1	Total	C	O	0	0
			7	4	3		
7	C	1	Total	C	O	0	0
			7	4	3		

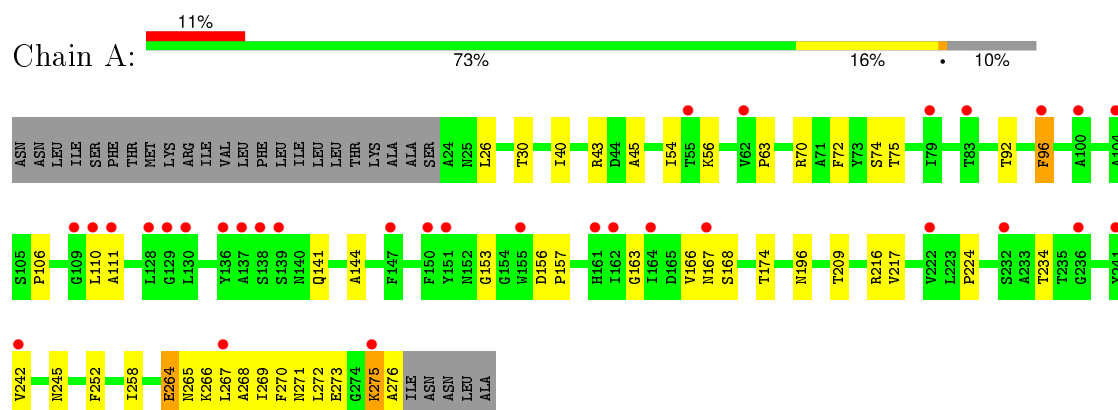
- Molecule 8 is water.

Mol	Chain	Residues	Atoms		ZeroOcc	AltConf
8	A	32	Total	O	0	0
			32	32		
8	B	43	Total	O	0	0
			43	43		
8	C	38	Total	O	0	0
			38	38		
8	D	45	Total	O	0	0
			45	45		

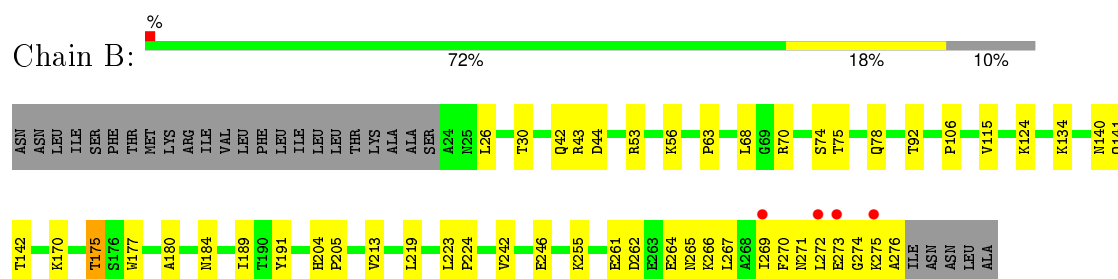
### 3 Residue-property plots [i](#)

These plots are drawn for all protein, RNA and DNA chains in the entry. The first graphic for a chain summarises the proportions of errors displayed in the second graphic. The second graphic shows the sequence view annotated by issues in geometry and electron density. Residues are color-coded according to the number of geometric quality criteria for which they contain at least one outlier: green = 0, yellow = 1, orange = 2 and red = 3 or more. A red dot above a residue indicates a poor fit to the electron density ( $RSRZ > 2$ ). Stretches of 2 or more consecutive residues without any outlier are shown as a green connector. Residues present in the sample, but not in the model, are shown in grey.

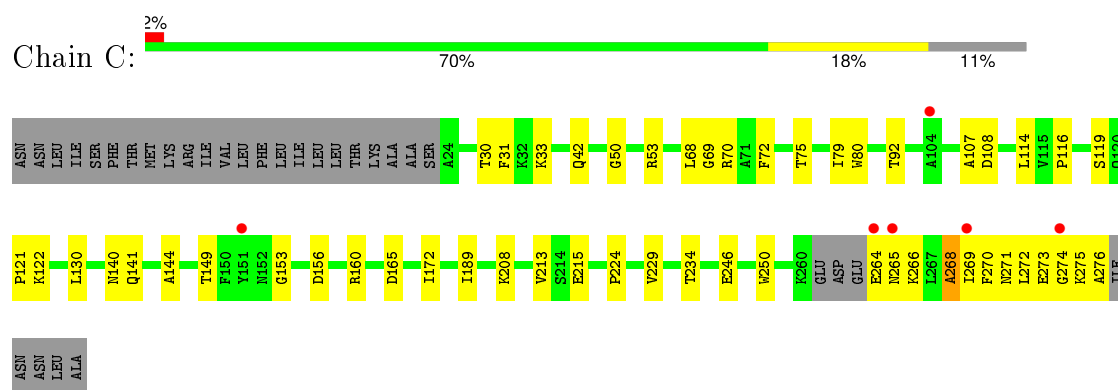
#### • Molecule 1: Legume lectin



#### • Molecule 1: Legume lectin

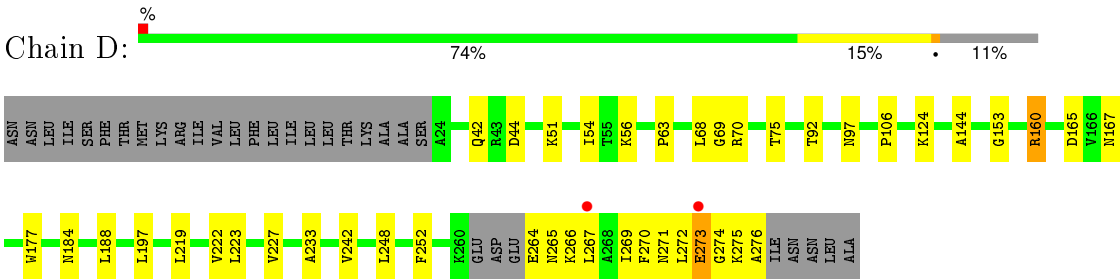


#### • Molecule 1: Legume lectin



#### • Molecule 1: Legume lectin





## 4 Data and refinement statistics

Property	Value	Source
Space group	P 32	Depositor
Cell constants a, b, c, $\alpha$ , $\beta$ , $\gamma$	89.78 Å 89.78 Å 123.89 Å 90.00° 90.00° 120.00°	Depositor
Resolution (Å)	42.20 – 2.00 42.20 – 2.00	Depositor EDS
% Data completeness (in resolution range)	99.6 (42.20-2.00) 99.8 (42.20-2.00)	Depositor EDS
$R_{merge}$	0.11	Depositor
$R_{sym}$	(Not available)	Depositor
$\langle I/\sigma(I) \rangle$ <sup>1</sup>	2.01 (at 2.00 Å)	Xtriage
Refinement program	REFMAC 5.5.0109	Depositor
R, $R_{free}$	0.207 , 0.249 (Not available) , (Not available)	Depositor DCC
$R_{free}$ test set	NotAvailable	DCC
Wilson B-factor (Å <sup>2</sup> )	30.0	Xtriage
Anisotropy	0.310	Xtriage
Bulk solvent $k_{sol}$ (e/Å <sup>3</sup> ), $B_{sol}$ (Å <sup>2</sup> )	0.30 , 13.9	EDS
Estimated twinning fraction	0.253 for H, K, L 0.248 for -H, H+K, -L 0.248 for -H, -K, L 0.251 for K, H, -L 0.470 for -h,-k,l 0.478 for h,-h-k,-l 0.470 for -k,-h,-l	Xtriage
Reported twinning fraction	0.253 for H, K, L 0.248 for -H, H+K, -L 0.248 for -H, -K, L 0.251 for K, H, -L	Depositor
L-test for twinning <sup>2</sup>	$\langle  L  \rangle = 0.39$ , $\langle L^2 \rangle = 0.21$	Xtriage
Outliers	0 of 75303 reflections	Xtriage
$F_o, F_c$ correlation	0.93	EDS
Total number of atoms	7949	wwPDB-VP
Average B, all atoms (Å <sup>2</sup> )	32.0	wwPDB-VP

Xtriage's analysis on translational NCS is as follows: *The largest off-origin peak in the Patterson function is 3.44% of the height of the origin peak. No significant pseudotranslation is detected.*

<sup>1</sup> Intensities estimated from amplitudes.

<sup>2</sup> Theoretical values of  $\langle |L| \rangle$ ,  $\langle L^2 \rangle$  for acentric reflections are 0.5, 0.375 respectively for untwinned datasets, and 0.333, 0.2 for perfectly twinned datasets.

## 5 Model quality [i](#)

### 5.1 Standard geometry [i](#)

Bond lengths and bond angles in the following residue types are not validated in this section: CA, MN, EDO, GAL, ADE, PEG

The Z score for a bond length (or angle) is the number of standard deviations the observed value is removed from the expected value. A bond length (or angle) with  $|Z| > 5$  is considered an outlier worth inspection. RMSZ is the root-mean-square of all Z scores of the bond lengths (or angles).

Mol	Chain	Bond lengths		Bond angles	
		RMSZ	$\# Z  > 5$	RMSZ	$\# Z  > 5$
1	A	0.34	0/1969	0.46	0/2683
1	B	0.34	0/1970	0.50	0/2683
1	C	0.33	0/1946	0.50	0/2649
1	D	0.34	0/1946	0.51	0/2649
All	All	0.34	0/7831	0.49	0/10664

There are no bond length outliers.

There are no bond angle outliers.

There are no chirality outliers.

There are no planarity outliers.

### 5.2 Too-close contacts [i](#)

In the following table, the Non-H and H(model) columns list the number of non-hydrogen atoms and hydrogen atoms in the chain respectively. The H(added) column lists the number of hydrogen atoms added and optimized by MolProbity. The Clashes column lists the number of clashes within the asymmetric unit, whereas Symm-Clashes lists symmetry related clashes.

Mol	Chain	Non-H	H(model)	H(added)	Clashes	Symm-Clashes
1	A	1926	0	1855	98	0
1	B	1927	0	1859	143	0
1	C	1904	0	1849	92	0
1	D	1904	0	1852	140	0
2	A	10	0	4	1	0
2	B	10	0	4	0	0
2	C	10	0	4	1	0
2	D	10	0	4	0	0
3	A	12	0	12	0	0

*Continued on next page...*

*Continued from previous page...*

Mol	Chain	Non-H	H(model)	H(added)	Clashes	Symm-Clashes
3	B	12	0	12	1	0
3	C	12	0	12	0	0
3	D	12	0	12	0	0
4	A	1	0	0	0	0
4	B	1	0	0	0	0
4	C	1	0	0	0	0
4	D	1	0	0	0	0
5	A	1	0	0	0	0
5	B	1	0	0	0	0
5	C	1	0	0	0	0
5	D	1	0	0	0	0
6	A	4	0	6	1	0
6	B	4	0	6	0	0
6	C	4	0	6	0	0
6	D	8	0	12	0	0
7	B	7	0	10	2	0
7	C	7	0	10	0	0
8	A	32	0	0	0	0
8	B	43	0	0	3	0
8	C	38	0	0	0	0
8	D	45	0	0	0	0
All	All	7949	0	7529	297	0

The all-atom clashscore is defined as the number of clashes found per 1000 atoms (including hydrogen atoms). The all-atom clashscore for this structure is 19.

All (297) close contacts within the same asymmetric unit are listed below, sorted by their clash magnitude.

Atom-1	Atom-2	Interatomic distance (Å)	Clash overlap (Å)
1:B:274:GLY:CA	1:D:266:LYS:HB2	1.35	1.57
1:B:270:PHE:H	1:D:270:PHE:CB	1.21	1.51
1:B:274:GLY:N	1:D:266:LYS:CB	1.72	1.50
1:B:274:GLY:N	1:D:266:LYS:HB2	1.18	1.46
1:B:275:LYS:O	1:D:264:GLU:CB	1.65	1.43
1:B:270:PHE:N	1:D:270:PHE:HB2	1.34	1.38
1:B:270:PHE:CD1	1:D:266:LYS:HG2	1.61	1.34
1:A:266:LYS:HE2	1:A:269:ILE:CB	1.55	1.34
1:A:272:LEU:HB3	1:C:265:ASN:CG	1.46	1.32
1:B:270:PHE:CB	1:D:266:LYS:O	1.77	1.29
1:B:271:ASN:OD1	1:D:265:ASN:CB	1.79	1.29
1:A:272:LEU:HB3	1:C:265:ASN:ND2	1.48	1.28

*Continued on next page...*

*Continued from previous page...*

Atom-1	Atom-2	Interatomic distance (Å)	Clash overlap (Å)
1:B:267:LEU:O	1:D:270:PHE:CB	1.66	1.26
1:A:266:LYS:HG2	1:C:270:PHE:O	1.31	1.25
1:B:265:ASN:O	1:D:275:LYS:C	1.73	1.25
1:B:274:GLY:H	1:D:266:LYS:N	1.36	1.21
1:B:270:PHE:N	1:D:270:PHE:CB	1.96	1.20
1:B:274:GLY:H	1:D:266:LYS:CA	1.55	1.18
1:B:270:PHE:HB2	1:D:270:PHE:N	1.58	1.17
1:B:270:PHE:CB	1:D:270:PHE:H	1.59	1.15
1:B:270:PHE:CD1	1:D:266:LYS:CG	2.30	1.14
1:B:274:GLY:CA	1:D:266:LYS:CB	2.18	1.14
1:B:266:LYS:HA	1:D:275:LYS:N	1.63	1.13
1:C:266:LYS:HE3	1:C:269:ILE:CB	1.77	1.13
1:B:270:PHE:H	1:D:270:PHE:HB3	1.14	1.12
1:A:272:LEU:HD22	1:C:265:ASN:HD22	1.00	1.12
1:B:270:PHE:CA	1:D:266:LYS:O	0.82	1.11
1:B:264:GLU:HB3	1:D:275:LYS:O	1.51	1.10
1:B:270:PHE:HB2	1:D:270:PHE:H	1.03	1.10
1:A:272:LEU:CB	1:C:265:ASN:ND2	2.15	1.10
1:B:265:ASN:O	1:D:276:ALA:N	1.84	1.10
1:B:275:LYS:O	1:D:264:GLU:HB3	1.34	1.10
1:B:275:LYS:O	1:D:264:GLU:HB2	1.33	1.09
1:A:265:ASN:ND2	1:C:272:LEU:HD13	1.66	1.09
1:B:270:PHE:HA	1:D:266:LYS:O	1.42	1.09
1:B:269:ILE:C	1:D:270:PHE:HB2	1.75	1.07
1:B:266:LYS:HA	1:D:275:LYS:H	1.11	1.06
1:A:272:LEU:CD2	1:C:265:ASN:HD22	1.68	1.06
1:A:265:ASN:OD1	1:C:272:LEU:C	1.85	1.06
1:A:266:LYS:CE	1:A:269:ILE:CB	2.33	1.05
1:A:272:LEU:HD13	1:C:265:ASN:ND2	1.71	1.04
1:B:270:PHE:HB3	1:D:267:LEU:CA	1.65	1.04
1:B:274:GLY:HA3	1:D:266:LYS:HB2	1.35	1.04
1:B:271:ASN:OD1	1:D:265:ASN:HB3	0.87	1.03
1:A:267:LEU:N	1:C:270:PHE:O	1.81	1.03
1:B:265:ASN:C	1:D:276:ALA:N	2.07	1.03
1:A:272:LEU:HD13	1:C:265:ASN:HD21	1.18	1.02
1:B:274:GLY:HA3	1:D:266:LYS:CB	1.87	1.02
1:A:272:LEU:CG	1:C:265:ASN:ND2	2.23	1.01
1:B:273:GLU:N	1:D:266:LYS:H	1.58	1.00
1:A:272:LEU:HD22	1:C:265:ASN:ND2	1.78	0.99
1:A:265:ASN:ND2	1:C:272:LEU:CD1	2.23	0.97
1:B:266:LYS:C	1:D:272:LEU:N	1.95	0.97

*Continued on next page...*

*Continued from previous page...*

Atom-1	Atom-2	Interatomic distance (Å)	Clash overlap (Å)
1:B:265:ASN:O	1:D:271:ASN:O	1.83	0.96
1:A:266:LYS:CG	1:C:270:PHE:O	2.13	0.96
1:B:274:GLY:N	1:D:266:LYS:CA	2.20	0.96
1:B:273:GLU:N	1:D:265:ASN:OD1	1.90	0.95
1:A:275:LYS:HE2	1:A:275:LYS:CA	1.95	0.95
1:A:265:ASN:O	1:C:275:LYS:N	2.01	0.94
1:A:272:LEU:CD1	1:C:265:ASN:ND2	2.31	0.93
1:B:270:PHE:CA	1:D:270:PHE:H	1.81	0.93
1:B:266:LYS:O	1:D:269:ILE:O	1.87	0.93
1:A:272:LEU:HB2	1:C:266:LYS:O	1.65	0.92
1:A:275:LYS:HA	1:A:275:LYS:HE2	1.51	0.92
1:A:269:ILE:CB	1:C:273:GLU:OE1	2.19	0.91
1:A:272:LEU:CB	1:C:265:ASN:CG	2.37	0.91
1:B:270:PHE:HB3	1:D:267:LEU:HA	1.52	0.90
1:D:272:LEU:O	1:D:276:ALA:C	2.10	0.90
1:B:275:LYS:C	1:D:264:GLU:CB	2.37	0.89
1:B:274:GLY:N	1:D:266:LYS:N	2.20	0.89
1:B:266:LYS:HB3	1:D:273:GLU:HB2	1.55	0.89
1:A:272:LEU:HD23	1:A:276:ALA:HB3	1.55	0.89
1:B:266:LYS:HB3	1:D:273:GLU:CB	1.99	0.88
1:B:274:GLY:N	1:D:266:LYS:HB3	1.89	0.88
1:B:265:ASN:OD1	1:D:273:GLU:N	1.86	0.88
1:B:270:PHE:HD1	1:D:266:LYS:HG2	1.35	0.88
1:A:276:ALA:N	1:C:265:ASN:O	2.06	0.87
1:B:271:ASN:CG	1:D:265:ASN:HB3	1.95	0.87
1:A:275:LYS:HE2	1:A:275:LYS:N	1.90	0.86
1:A:265:ASN:OD1	1:A:266:LYS:N	2.08	0.86
1:D:266:LYS:HE3	1:D:269:ILE:CB	2.06	0.86
1:B:267:LEU:O	1:D:270:PHE:HB3	0.91	0.86
1:B:265:ASN:O	1:D:275:LYS:CA	2.22	0.86
1:A:272:LEU:CD2	1:C:265:ASN:ND2	2.35	0.85
1:B:274:GLY:H	1:D:266:LYS:CB	1.59	0.85
1:B:269:ILE:CA	1:D:270:PHE:HB2	1.85	0.84
1:D:271:ASN:O	1:D:275:LYS:HB3	1.76	0.84
1:B:275:LYS:C	1:D:264:GLU:HB3	1.94	0.83
1:B:274:GLY:CA	1:D:266:LYS:CA	2.57	0.82
1:B:274:GLY:H	1:D:266:LYS:H	1.26	0.82
1:B:266:LYS:C	1:D:272:LEU:H	1.80	0.82
1:A:265:ASN:HD22	1:C:272:LEU:HD13	1.43	0.82
1:C:266:LYS:CE	1:C:269:ILE:CB	2.57	0.82
1:B:68:LEU:HD12	1:B:124:LYS:HG2	1.61	0.81

*Continued on next page...*

*Continued from previous page...*

Atom-1	Atom-2	Interatomic distance (Å)	Clash overlap (Å)
1:B:270:PHE:CB	1:D:267:LEU:CA	2.46	0.81
1:D:272:LEU:O	1:D:276:ALA:N	2.12	0.81
1:B:270:PHE:N	1:D:266:LYS:O	2.10	0.81
1:B:270:PHE:CB	1:D:267:LEU:O	2.13	0.80
1:B:266:LYS:HG2	1:D:270:PHE:O	1.82	0.80
1:A:272:LEU:CD1	1:C:265:ASN:HD21	1.93	0.79
1:A:273:GLU:HG3	1:C:269:ILE:CB	2.12	0.79
1:B:270:PHE:CE1	1:D:266:LYS:CG	2.66	0.78
1:B:271:ASN:OD1	1:B:272:LEU:N	2.18	0.77
1:B:271:ASN:HB3	1:D:267:LEU:HB2	1.66	0.77
1:A:265:ASN:HB3	1:C:272:LEU:CD2	2.14	0.76
1:B:266:LYS:CG	1:D:270:PHE:O	2.34	0.76
1:A:265:ASN:HB3	1:C:272:LEU:HD22	1.68	0.73
1:A:265:ASN:HD21	1:C:272:LEU:HD13	1.52	0.73
1:C:79:ILE:HD12	1:C:80:TRP:HD1	1.51	0.73
1:B:275:LYS:C	1:D:264:GLU:HB2	2.04	0.73
1:B:273:GLU:C	1:D:266:LYS:HB2	2.06	0.72
1:D:275:LYS:O	1:D:276:ALA:HB2	1.89	0.72
1:D:267:LEU:O	1:D:271:ASN:ND2	2.22	0.72
1:A:30:THR:OG1	1:B:26:LEU:HB2	1.89	0.71
1:A:266:LYS:HG2	1:C:270:PHE:C	2.10	0.71
1:B:273:GLU:C	1:D:266:LYS:CB	2.60	0.70
1:A:275:LYS:HA	1:C:264:GLU:OE1	1.91	0.70
1:A:275:LYS:CE	1:A:275:LYS:N	2.55	0.69
1:B:270:PHE:CE1	1:D:266:LYS:HG3	2.27	0.69
1:B:270:PHE:CG	1:D:266:LYS:O	2.45	0.69
1:A:268:ALA:N	1:C:270:PHE:O	2.14	0.69
1:A:272:LEU:HB3	1:C:265:ASN:OD1	1.92	0.69
1:B:274:GLY:HA3	1:D:266:LYS:CA	2.19	0.68
1:A:264:GLU:HG2	1:C:275:LYS:CD	2.18	0.68
1:A:272:LEU:CB	1:C:266:LYS:O	2.14	0.67
1:B:266:LYS:HE3	1:B:269:ILE:CB	2.24	0.67
1:B:271:ASN:O	1:B:275:LYS:N	2.28	0.67
1:A:265:ASN:OD1	1:C:272:LEU:O	2.12	0.66
1:B:271:ASN:OD1	1:B:272:LEU:HD23	1.93	0.66
1:B:273:GLU:H	1:D:266:LYS:H	1.41	0.66
1:A:265:ASN:HD21	1:C:272:LEU:CD1	2.05	0.65
1:B:274:GLY:HA3	1:D:266:LYS:HA	1.79	0.64
1:A:266:LYS:NZ	1:A:269:ILE:CB	2.59	0.64
1:A:264:GLU:HG2	1:C:275:LYS:HD3	1.79	0.64
1:C:172:ILE:HD12	1:C:215:GLU:HG2	1.79	0.63

*Continued on next page...*

*Continued from previous page...*

Atom-1	Atom-2	Interatomic distance (Å)	Clash overlap (Å)
1:C:271:ASN:OD1	1:C:272:LEU:N	2.31	0.63
1:B:274:GLY:CA	1:D:266:LYS:HA	2.27	0.63
1:B:266:LYS:HD3	1:D:273:GLU:HB2	1.79	0.63
1:A:216:ARG:HB3	1:C:208:LYS:HD3	1.81	0.62
1:B:270:PHE:CD1	1:D:266:LYS:HG3	2.30	0.62
1:B:270:PHE:N	1:D:270:PHE:H	1.98	0.62
1:B:219:LEU:HD22	1:B:223:LEU:HD12	1.82	0.62
1:D:160:ARG:HB2	1:D:177:TRP:O	2.00	0.62
1:A:270:PHE:O	1:C:266:LYS:C	2.07	0.61
1:B:53:ARG:HG2	1:B:246:GLU:HG2	1.82	0.61
1:A:196:ASN:HB2	1:A:216:ARG:HG3	1.82	0.61
1:A:265:ASN:CB	1:C:272:LEU:HD22	2.30	0.60
1:B:266:LYS:O	1:D:269:ILE:C	2.35	0.60
1:B:270:PHE:N	1:D:270:PHE:CA	2.64	0.60
1:A:272:LEU:HD23	1:A:276:ALA:CB	2.31	0.60
1:D:51:LYS:HD2	1:D:248:LEU:HD22	1.83	0.60
1:A:63:PRO:HB2	1:A:242:VAL:HB	1.83	0.60
1:A:265:ASN:O	1:C:276:ALA:N	2.19	0.59
1:A:265:ASN:O	1:C:271:ASN:O	2.21	0.58
1:B:271:ASN:OD1	1:B:272:LEU:CD2	2.50	0.58
1:B:265:ASN:O	1:D:275:LYS:N	2.36	0.58
1:B:44:ASP:HB3	1:B:56:LYS:HG3	1.85	0.58
1:B:273:GLU:N	1:D:266:LYS:N	2.42	0.58
1:B:266:LYS:HB3	1:D:273:GLU:N	2.04	0.58
1:B:270:PHE:N	1:D:270:PHE:N	2.51	0.57
1:D:275:LYS:O	1:D:276:ALA:CB	2.51	0.57
1:A:264:GLU:HG3	1:C:274:GLY:O	2.04	0.57
1:C:272:LEU:HD22	1:C:276:ALA:HB2	1.86	0.57
1:C:42:GLN:HB2	1:C:70:ARG:HB2	1.87	0.57
1:D:42:GLN:HB2	1:D:70:ARG:HB2	1.87	0.57
1:B:273:GLU:HB2	1:D:266:LYS:HB3	1.87	0.56
1:B:270:PHE:CG	1:D:266:LYS:C	2.79	0.56
1:A:45:ALA:HB2	1:A:70:ARG:H	1.70	0.56
1:B:275:LYS:H	1:D:266:LYS:HA	1.70	0.55
1:A:265:ASN:O	1:C:275:LYS:CA	2.54	0.55
1:B:271:ASN:O	1:B:276:ALA:N	2.39	0.55
1:D:272:LEU:O	1:D:276:ALA:CA	2.54	0.55
1:A:270:PHE:O	1:C:266:LYS:HG2	2.07	0.55
1:A:266:LYS:C	1:C:270:PHE:O	2.43	0.54
1:B:270:PHE:CB	1:D:266:LYS:C	2.54	0.54
1:A:40:ILE:HD11	1:A:74:SER:HA	1.89	0.54

*Continued on next page...*



*Continued from previous page...*

Atom-1	Atom-2	Interatomic distance (Å)	Clash overlap (Å)
1:B:265:ASN:C	1:D:271:ASN:O	2.45	0.54
6:A:305:EDO:H12	1:B:26:LEU:HB3	1.89	0.54
3:B:302[B]:GAL:HO1	7:B:306:PEG:HO4	1.53	0.53
1:C:31:PHE:HB2	1:C:250:TRP:H	1.74	0.53
1:A:275:LYS:O	1:C:264:GLU:OE1	2.27	0.53
1:B:205:PRO:HA	1:D:197:LEU:HD22	1.91	0.53
1:A:266:LYS:N	1:C:274:GLY:N	2.32	0.52
1:A:272:LEU:HA	1:A:276:ALA:HB3	1.92	0.52
1:B:270:PHE:CG	1:D:266:LYS:HG2	2.33	0.52
1:A:264:GLU:OE1	1:A:265:ASN:O	2.28	0.52
1:B:92:THR:HG22	1:B:189:ILE:HB	1.91	0.51
1:B:42:GLN:HB2	1:B:70:ARG:HB2	1.91	0.51
1:B:267:LEU:O	1:D:270:PHE:CA	2.50	0.51
1:B:141:GLN:HB3	1:B:224:PRO:HD3	1.92	0.51
1:D:44:ASP:HB3	1:D:56:LYS:HG3	1.91	0.51
1:B:264:GLU:CB	1:D:275:LYS:O	2.42	0.51
1:A:54:ILE:HD12	1:A:245:ASN:HB3	1.93	0.51
1:D:97:ASN:HD22	1:D:184:ASN:ND2	2.10	0.50
1:D:188:LEU:HD21	1:D:267:LEU:HD11	1.92	0.50
1:B:266:LYS:CB	1:D:273:GLU:N	2.65	0.50
1:C:79:ILE:HD12	1:C:80:TRP:CD1	2.41	0.50
1:D:272:LEU:O	1:D:273:GLU:C	2.50	0.50
1:A:269:ILE:O	1:C:266:LYS:O	2.30	0.49
1:B:43:ARG:HH12	1:B:124:LYS:HE2	1.77	0.49
1:D:167:ASN:ND2	1:D:222:VAL:HG13	2.27	0.49
1:B:271:ASN:OD1	1:D:265:ASN:CG	2.50	0.49
1:B:175:THR:CG2	1:B:213:VAL:HG22	2.43	0.49
1:A:75:THR:HG23	1:B:75:THR:OG1	2.12	0.49
1:B:261:GLU:O	1:B:262:ASP:HB2	2.12	0.49
1:B:191:TYR:CZ	1:B:219:LEU:HG	2.48	0.48
7:B:306:PEG:H21	7:B:306:PEG:H42	1.44	0.48
1:C:70:ARG:HH21	1:C:130:LEU:HA	1.78	0.48
1:A:141:GLN:HB3	1:A:224:PRO:HD3	1.95	0.48
1:B:272:LEU:C	1:D:266:LYS:H	2.16	0.48
1:D:144:ALA:HB3	1:D:165:ASP:HB2	1.94	0.48
1:A:265:ASN:OD1	1:C:273:GLU:N	2.46	0.48
1:A:75:THR:HG22	1:B:74:SER:OG	2.13	0.48
1:A:265:ASN:HD22	1:C:272:LEU:HD22	1.79	0.48
1:A:153:GLY:H	1:A:156:ASP:HB2	1.78	0.48
1:A:265:ASN:HB3	1:C:272:LEU:HD23	1.96	0.47
1:B:270:PHE:HB3	1:D:267:LEU:O	1.67	0.47

*Continued on next page...*

*Continued from previous page...*

Atom-1	Atom-2	Interatomic distance (Å)	Clash overlap (Å)
1:C:114:LEU:HG	1:C:229:VAL:HG12	1.96	0.47
1:C:53:ARG:HG2	1:C:246:GLU:HG2	1.95	0.47
1:C:42:GLN:OE1	1:C:121:PRO:HD3	2.15	0.47
1:C:153:GLY:H	1:C:156:ASP:HB2	1.80	0.47
1:C:30:THR:HG21	1:C:273:GLU:HG2	1.96	0.47
1:A:267:LEU:HD12	1:A:267:LEU:O	2.16	0.46
1:B:180:ALA:H	1:B:204:HIS:CE1	2.33	0.46
1:C:149:THR:HA	1:C:160:ARG:HD2	1.96	0.46
1:B:270:PHE:HB2	1:D:267:LEU:O	2.11	0.46
1:A:265:ASN:ND2	1:C:272:LEU:HD22	2.31	0.46
1:D:68:LEU:HD12	1:D:124:LYS:HA	1.97	0.46
1:B:26:LEU:HD11	1:B:255:LYS:HE3	1.97	0.46
1:B:63:PRO:HB2	1:B:242:VAL:HB	1.98	0.46
1:C:107:ALA:HA	1:C:108:ASP:HA	1.72	0.46
1:D:54:ILE:HG21	1:D:233:ALA:HB3	1.97	0.46
1:B:270:PHE:CA	1:D:270:PHE:N	2.63	0.46
1:B:177:TRP:HE1	1:B:204:HIS:CE1	2.34	0.46
1:A:166:VAL:C	1:A:168:SER:H	2.19	0.46
1:B:270:PHE:CB	1:D:270:PHE:N	2.37	0.46
1:D:63:PRO:HG2	1:D:242:VAL:HB	1.98	0.46
1:B:270:PHE:HA	1:D:266:LYS:HG2	1.99	0.45
1:D:219:LEU:HB3	1:D:223:LEU:HD12	1.97	0.45
1:D:68:LEU:HD13	1:D:124:LYS:HG2	1.98	0.45
1:D:54:ILE:O	1:D:69:GLY:HA3	2.17	0.45
1:D:92:THR:HB	1:D:252:PHE:HD1	1.81	0.45
1:B:266:LYS:CA	1:D:275:LYS:N	2.56	0.45
1:D:167:ASN:HD21	1:D:222:VAL:HG13	1.82	0.45
1:A:163:GLY:HA3	1:A:174:THR:HG22	1.98	0.45
1:B:273:GLU:C	1:D:266:LYS:HB3	2.32	0.44
1:A:96:PHE:CD1	1:A:110:LEU:HD21	2.52	0.44
1:B:115:VAL:HG12	1:B:142:THR:HG23	2.00	0.44
1:C:116:PRO:HB2	1:C:119:SER:HB2	1.99	0.44
1:A:26:LEU:HB2	1:B:30:THR:HB	1.99	0.44
1:A:275:LYS:CA	1:C:264:GLU:OE1	2.64	0.44
1:C:68:LEU:HD23	1:C:69:GLY:N	2.33	0.44
1:B:270:PHE:CA	1:D:266:LYS:HG2	2.48	0.43
1:D:274:GLY:C	1:D:276:ALA:H	2.21	0.43
1:A:271:ASN:HA	1:C:268:ALA:H	1.62	0.43
1:B:78:GLN:NE2	8:B:409:HOH:O	2.44	0.43
1:A:272:LEU:HA	1:C:265:ASN:HB3	2.00	0.43
1:B:275:LYS:HB2	1:D:265:ASN:O	2.19	0.43

*Continued on next page...*

*Continued from previous page...*

Atom-1	Atom-2	Interatomic distance (Å)	Clash overlap (Å)
1:A:265:ASN:HD22	1:C:272:LEU:CD1	2.12	0.43
1:B:270:PHE:CB	1:D:267:LEU:N	2.82	0.43
1:D:223:LEU:HD22	1:D:227:VAL:HG11	1.99	0.43
1:B:275:LYS:N	1:D:266:LYS:HA	2.31	0.43
1:A:272:LEU:CD2	1:C:265:ASN:HB3	2.49	0.43
1:B:274:GLY:HA3	1:D:266:LYS:CG	2.47	0.42
1:C:70:ARG:HD3	1:C:72:PHE:CE2	2.54	0.42
1:B:184:ASN:O	1:B:204:HIS:HD2	2.03	0.42
1:C:68:LEU:HG	1:C:234:THR:HG22	2.01	0.42
1:A:92:THR:HB	1:A:252:PHE:HD1	1.83	0.42
1:C:266:LYS:NZ	1:C:269:ILE:CB	2.82	0.42
1:A:272:LEU:HD22	1:C:265:ASN:HB3	2.02	0.42
1:A:30:THR:HG1	1:B:26:LEU:HB2	1.82	0.42
1:B:270:PHE:N	1:D:270:PHE:HB3	1.98	0.42
1:C:75:THR:OG1	1:D:75:THR:HG22	2.19	0.42
1:A:70:ARG:HB3	1:A:72:PHE:HE2	1.85	0.42
1:B:274:GLY:N	1:D:266:LYS:H	2.00	0.42
1:A:264:GLU:CD	1:A:265:ASN:O	2.58	0.42
1:A:111:ALA:HB1	1:A:144:ALA:HB1	2.01	0.42
1:A:270:PHE:O	1:C:268:ALA:N	2.21	0.41
1:A:272:LEU:HD22	1:C:265:ASN:CB	2.50	0.41
1:C:144:ALA:HB3	1:C:165:ASP:HB2	2.02	0.41
1:D:272:LEU:C	1:D:276:ALA:C	2.72	0.41
1:C:92:THR:HG22	1:C:189:ILE:HB	2.01	0.41
1:C:70:ARG:HD3	1:C:72:PHE:HE2	1.85	0.41
1:B:265:ASN:O	1:D:275:LYS:CB	2.66	0.41
1:D:54:ILE:CG2	1:D:233:ALA:HB3	2.51	0.41
1:A:275:LYS:C	1:C:265:ASN:O	2.57	0.41
1:B:70:ARG:NH2	1:B:115:VAL:HG11	2.35	0.41
1:A:54:ILE:HG13	1:A:54:ILE:H	1.74	0.41
1:B:134:LYS:HD2	1:B:170:LYS:HD2	2.01	0.41
1:A:273:GLU:OE2	1:C:266:LYS:CB	2.65	0.41
2:A:301:ADE:C2	2:C:301:ADE:C2	3.08	0.41
1:C:122:LYS:HE3	1:C:140:ASN:HB3	2.03	0.41
1:A:166:VAL:HG21	1:A:217:VAL:HG21	2.03	0.41
1:B:140:ASN:ND2	8:B:428:HOH:O	2.53	0.41
1:C:33:LYS:HD2	1:C:50:GLY:HA3	2.02	0.41
1:A:74:SER:HB2	8:B:416:HOH:O	2.21	0.40
1:C:141:GLN:HB3	1:C:224:PRO:HD3	2.02	0.40

There are no symmetry-related clashes.

## 5.3 Torsion angles [i](#)

### 5.3.1 Protein backbone [i](#)

In the following table, the Percentiles column shows the percent Ramachandran outliers of the chain as a percentile score with respect to all X-ray entries followed by that with respect to entries of similar resolution.

The Analysed column shows the number of residues for which the backbone conformation was analysed, and the total number of residues.

Mol	Chain	Analysed	Favoured	Allowed	Outliers	Percentiles	
1	A	251/281 (89%)	222 (88%)	21 (8%)	8 (3%)	5	1
1	B	251/281 (89%)	237 (94%)	13 (5%)	1 (0%)	39	33
1	C	246/281 (88%)	226 (92%)	19 (8%)	1 (0%)	39	33
1	D	246/281 (88%)	229 (93%)	14 (6%)	3 (1%)	16	8
All	All	994/1124 (88%)	914 (92%)	67 (7%)	13 (1%)	15	7

All (13) Ramachandran outliers are listed below:

Mol	Chain	Res	Type
1	A	56	LYS
1	A	157	PRO
1	A	258	ILE
1	A	167	ASN
1	C	268	ALA
1	A	43	ARG
1	A	275	LYS
1	D	273	GLU
1	A	209	THR
1	B	106	PRO
1	D	153	GLY
1	A	106	PRO
1	D	106	PRO

### 5.3.2 Protein sidechains [i](#)

In the following table, the Percentiles column shows the percent sidechain outliers of the chain as a percentile score with respect to all X-ray entries followed by that with respect to entries of similar resolution.

The Analysed column shows the number of residues for which the sidechain conformation was analysed, and the total number of residues.

Mol	Chain	Analysed	Rotameric	Outliers	Percentiles	
1	A	210/237 (89%)	207 (99%)	3 (1%)	74	77
1	B	210/237 (89%)	209 (100%)	1 (0%)	92	94
1	C	208/237 (88%)	207 (100%)	1 (0%)	92	94
1	D	208/237 (88%)	207 (100%)	1 (0%)	92	94
All	All	836/948 (88%)	830 (99%)	6 (1%)	88	91

All (6) residues with a non-rotameric sidechain are listed below:

Mol	Chain	Res	Type
1	A	96	PHE
1	A	234	THR
1	A	264	GLU
1	B	175	THR
1	C	213	VAL
1	D	160	ARG

Some sidechains can be flipped to improve hydrogen bonding and reduce clashes. All (12) such sidechains are listed below:

Mol	Chain	Res	Type
1	A	184	ASN
1	B	78	GLN
1	B	102	ASN
1	B	120	GLN
1	B	184	ASN
1	B	204	HIS
1	B	207	GLN
1	C	135	ASN
1	C	204	HIS
1	C	265	ASN
1	D	184	ASN
1	D	204	HIS

### 5.3.3 RNA ⓘ

There are no RNA molecules in this entry.

## 5.4 Non-standard residues in protein, DNA, RNA chains ⓘ

There are no non-standard protein/DNA/RNA residues in this entry.

## 5.5 Carbohydrates [i](#)

There are no carbohydrates in this entry.

## 5.6 Ligand geometry [i](#)

Of 23 ligands modelled in this entry, 8 are monoatomic - leaving 15 for Mogul analysis.

In the following table, the Counts columns list the number of bonds (or angles) for which Mogul statistics could be retrieved, the number of bonds (or angles) that are observed in the model and the number of bonds (or angles) that are defined in the chemical component dictionary. The Link column lists molecule types, if any, to which the group is linked. The Z score for a bond length (or angle) is the number of standard deviations the observed value is removed from the expected value. A bond length (or angle) with  $|Z| > 2$  is considered an outlier worth inspection. RMSZ is the root-mean-square of all Z scores of the bond lengths (or angles).

Mol	Type	Chain	Res	Link	Bond lengths			Bond angles		
					Counts	RMSZ	# $ Z  > 2$	Counts	RMSZ	# $ Z  > 2$
2	ADE	A	301	-	8,11,11	0.89	0	4,15,15	0.72	0
3	GAL	A	302[B]	-	12,12,12	0.53	0	17,17,17	0.56	0
6	EDO	A	305	-	3,3,3	0.41	0	2,2,2	0.51	0
2	ADE	B	301	-	8,11,11	0.88	0	4,15,15	0.63	0
3	GAL	B	302[B]	-	12,12,12	0.48	0	17,17,17	0.60	0
6	EDO	B	305	-	3,3,3	0.48	0	2,2,2	0.39	0
7	PEG	B	306	-	6,6,6	0.47	0	5,5,5	0.45	0
2	ADE	C	301	-	8,11,11	0.90	0	4,15,15	0.65	0
3	GAL	C	302[B]	-	12,12,12	0.54	0	17,17,17	0.81	0
6	EDO	C	305	-	3,3,3	0.48	0	2,2,2	0.44	0
7	PEG	C	306	-	6,6,6	0.45	0	5,5,5	0.30	0
2	ADE	D	301	-	8,11,11	0.90	0	4,15,15	0.53	0
3	GAL	D	302[B]	-	12,12,12	0.55	0	17,17,17	0.60	0
6	EDO	D	305	-	3,3,3	0.48	0	2,2,2	0.42	0
6	EDO	D	306	-	3,3,3	0.46	0	2,2,2	0.42	0

In the following table, the Chirals column lists the number of chiral outliers, the number of chiral centers analysed, the number of these observed in the model and the number defined in the chemical component dictionary. Similar counts are reported in the Torsion and Rings columns. '-' means no outliers of that kind were identified.

Mol	Type	Chain	Res	Link	Chirals	Torsions	Rings
2	ADE	A	301	-	-	0/0/0/0	0/2/2/2
3	GAL	A	302[B]	-	-	0/2/22/22	0/1/1/1
6	EDO	A	305	-	-	0/1/1/1	0/0/0/0
2	ADE	B	301	-	-	0/0/0/0	0/2/2/2
3	GAL	B	302[B]	-	-	0/2/22/22	0/1/1/1

*Continued on next page...*

*Continued from previous page...*

Mol	Type	Chain	Res	Link	Chirals	Torsions	Rings
6	EDO	B	305	-	-	0/1/1/1	0/0/0/0
7	PEG	B	306	-	-	0/4/4/4	0/0/0/0
2	ADE	C	301	-	-	0/0/0/0	0/2/2/2
3	GAL	C	302[B]	-	-	0/2/22/22	0/1/1/1
6	EDO	C	305	-	-	0/1/1/1	0/0/0/0
7	PEG	C	306	-	-	0/4/4/4	0/0/0/0
2	ADE	D	301	-	-	0/0/0/0	0/2/2/2
3	GAL	D	302[B]	-	-	0/2/22/22	0/1/1/1
6	EDO	D	305	-	-	0/1/1/1	0/0/0/0
6	EDO	D	306	-	-	0/1/1/1	0/0/0/0

There are no bond length outliers.

There are no bond angle outliers.

There are no chirality outliers.

There are no torsion outliers.

There are no ring outliers.

5 monomers are involved in 4 short contacts:

Mol	Chain	Res	Type	Clashes	Symm-Clashes
2	A	301	ADE	1	0
6	A	305	EDO	1	0
3	B	302[B]	GAL	1	0
7	B	306	PEG	2	0
2	C	301	ADE	1	0

## 5.7 Other polymers [i](#)

There are no such residues in this entry.

## 5.8 Polymer linkage issues [i](#)

There are no chain breaks in this entry.

## 6 Fit of model and data

### 6.1 Protein, DNA and RNA chains

In the following table, the column labelled ‘#RSRZ> 2’ contains the number (and percentage) of RSRZ outliers, followed by percent RSRZ outliers for the chain as percentile scores relative to all X-ray entries and entries of similar resolution. The OWAB column contains the minimum, median, 95<sup>th</sup> percentile and maximum values of the occupancy-weighted average B-factor per residue. The column labelled ‘Q< 0.9’ lists the number of (and percentage) of residues with an average occupancy less than 0.9.

Mol	Chain	Analysed	<RSRZ>	#RSRZ>2	OWAB(Å <sup>2</sup> )	Q<0.9
1	A	253/281 (90%)	0.72	32 (12%) <b>5</b> <b>5</b>	29, 45, 67, 69	14 (5%)
1	B	253/281 (90%)	-0.21	4 (1%) <b>74</b> <b>75</b>	18, 24, 36, 38	14 (5%)
1	C	250/281 (88%)	-0.13	6 (2%) <b>62</b> <b>63</b>	24, 31, 38, 43	14 (5%)
1	D	250/281 (88%)	-0.21	2 (0%) <b>87</b> <b>88</b>	20, 28, 33, 35	14 (5%)
All	All	1006/1124 (89%)	0.05	44 (4%) <b>38</b> <b>39</b>	18, 30, 58, 69	56 (5%)

All (44) RSRZ outliers are listed below:

Mol	Chain	Res	Type	RSRZ
1	D	267	LEU	7.5
1	A	151	TYR	5.4
1	A	128	LEU	5.3
1	A	136	TYR	5.1
1	B	272	LEU	4.9
1	B	269	ILE	4.9
1	A	167	ASN	4.7
1	A	242	VAL	4.6
1	A	110	LEU	4.0
1	A	111	ALA	3.9
1	A	241	TYR	3.9
1	C	265	ASN	3.8
1	A	137	ALA	3.7
1	A	164	ILE	3.6
1	A	155	TRP	3.5
1	A	130	LEU	3.4
1	A	104	ALA	3.3
1	A	100	ALA	3.3
1	A	129	GLY	3.2
1	B	273	GLU	3.1
1	A	83	THR	2.9

*Continued on next page...*



*Continued from previous page...*

Mol	Chain	Res	Type	RSRZ
1	A	236	GLY	2.9
1	A	232	SER	2.9
1	C	269	ILE	2.7
1	A	147	PHE	2.7
1	A	162	ILE	2.6
1	A	222	VAL	2.6
1	A	275	LYS	2.5
1	A	139	SER	2.5
1	A	109	GLY	2.4
1	A	79	ILE	2.4
1	B	275	LYS	2.4
1	A	62	VAL	2.3
1	A	161	HIS	2.3
1	C	151	TYR	2.2
1	C	274	GLY	2.2
1	D	273	GLU	2.2
1	A	267	LEU	2.1
1	A	55	THR	2.1
1	A	138	SER	2.1
1	A	150	PHE	2.1
1	C	264	GLU	2.1
1	A	96	PHE	2.1
1	C	104	ALA	2.0

## 6.2 Non-standard residues in protein, DNA, RNA chains [i](#)

There are no non-standard protein/DNA/RNA residues in this entry.

## 6.3 Carbohydrates [i](#)

There are no carbohydrates in this entry.

## 6.4 Ligands [i](#)

In the following table, the Atoms column lists the number of modelled atoms in the group and the number defined in the chemical component dictionary. LLDF column lists the quality of electron density of the group with respect to its neighbouring residues in protein, DNA or RNA chains. The B-factors column lists the minimum, median, 95<sup>th</sup> percentile and maximum values of B factors of atoms in the group. The column labelled 'Q< 0.9' lists the number of atoms with occupancy less than 0.9.

Mol	Type	Chain	Res	Atoms	RSCC	RSR	LLDF	B-factors( $\text{\AA}^2$ )	Q<0.9
3	GAL	B	302[B]	12/12	0.94	0.14	2.67	16,18,19,20	12
2	ADE	B	301	10/10	0.92	0.12	2.52	41,41,42,42	0
2	ADE	C	301	10/10	0.87	0.17	2.23	27,27,27,27	0
5	CA	B	304	1/1	1.00	0.12	1.73	24,24,24,24	0
6	EDO	D	306	4/4	0.94	0.11	1.42	28,28,28,29	0
3	GAL	C	302[B]	12/12	0.85	0.15	1.26	30,30,31,31	12
2	ADE	D	301	10/10	0.72	0.22	0.78	36,36,37,37	0
3	GAL	D	302[B]	12/12	0.87	0.16	0.41	26,27,27,27	12
6	EDO	C	305	4/4	0.94	0.12	0.18	24,24,24,24	0
2	ADE	A	301	10/10	0.94	0.12	-0.42	30,30,30,30	0
6	EDO	A	305	4/4	0.96	0.10	-0.79	20,20,21,21	0
3	GAL	A	302[B]	12/12	0.73	0.18	-0.79	28,29,29,29	12
5	CA	C	304	1/1	0.99	0.08	-1.08	31,31,31,31	0
5	CA	D	304	1/1	0.98	0.07	-1.21	31,31,31,31	0
4	MN	A	303	1/1	0.96	0.07	-3.07	57,57,57,57	0
5	CA	A	304	1/1	0.96	0.09	-3.49	49,49,49,49	0
4	MN	D	303	1/1	0.99	0.03	-4.54	47,47,47,47	0
4	MN	B	303	1/1	0.98	0.06	-4.62	35,35,35,35	0
4	MN	C	303	1/1	0.97	0.03	-5.63	36,36,36,36	0
7	PEG	B	306	7/7	0.97	0.10	-	20,21,22,22	0
6	EDO	B	305	4/4	0.94	0.09	-	26,26,26,27	0
7	PEG	C	306	7/7	0.94	0.10	-	28,28,29,29	0
6	EDO	D	305	4/4	0.95	0.11	-	26,26,26,26	0

## 6.5 Other polymers

There are no such residues in this entry.