



# Full wwPDB X-ray Structure Validation Report ⓘ

Jan 31, 2016 – 10:40 PM GMT

PDB ID : 1UNG  
Title : STRUCTURAL MECHANISM FOR THE INHIBITION OF CDK5-P25 BY  
ROSCOVITINE, ALOISINE AND INDIRUBIN.  
Authors : Mapelli, M.; Crovace, C.; Massimiliano, L.; Musacchio, A.  
Deposited on : 2003-09-10  
Resolution : 2.30 Å(reported)

This is a Full wwPDB X-ray Structure Validation Report for a publicly released PDB entry.  
We welcome your comments at [validation@mail.wwpdb.org](mailto:validation@mail.wwpdb.org)  
A user guide is available at  
<http://wwpdb.org/validation/2016/XrayValidationReportHelp>  
with specific help available everywhere you see the ⓘ symbol.

---

The following versions of software and data (see [references ⓘ](#)) were used in the production of this report:

MolProbity : 4.02b-467  
Mogul : 1.7 (RC4), CSD as536be (2015)  
Xtriage (Phenix) : 1.9-1692  
EDS : rb-20026688  
Percentile statistics : 20151230.v01 (using entries in the PDB archive December 30th 2015)  
Refmac : 5.8.0135  
CCP4 : 6.5.0  
Ideal geometry (proteins) : Engh & Huber (2001)  
Ideal geometry (DNA, RNA) : Parkinson et al. (1996)  
Validation Pipeline (wwPDB-VP) : trunk26865

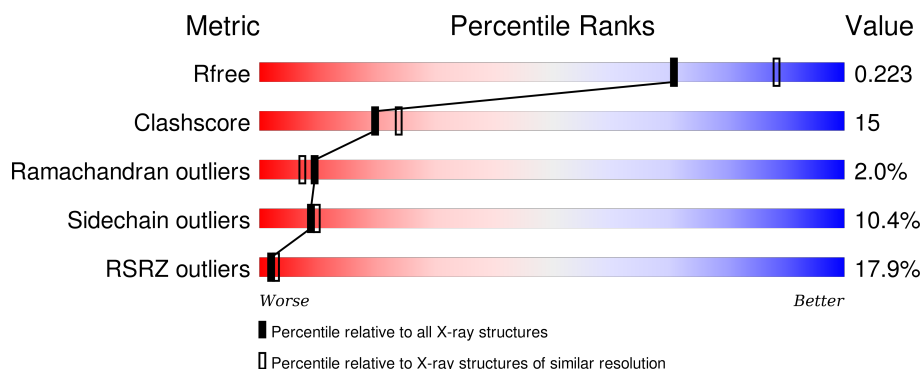
# 1 Overall quality at a glance

The following experimental techniques were used to determine the structure:

## *X-RAY DIFFRACTION*

The reported resolution of this entry is 2.30 Å.

Percentile scores (ranging between 0-100) for global validation metrics of the entry are shown in the following graphic. The table shows the number of entries on which the scores are based.



Metric	Whole archive (#Entries)	Similar resolution (#Entries, resolution range(Å))
$R_{free}$	91344	3852 (2.30-2.30)
Clashscore	102246	4452 (2.30-2.30)
Ramachandran outliers	100387	4410 (2.30-2.30)
Sidechain outliers	100360	4409 (2.30-2.30)
RSRZ outliers	91569	3857 (2.30-2.30)

The table below summarises the geometric issues observed across the polymeric chains and their fit to the electron density. The red, orange, yellow and green segments on the lower bar indicate the fraction of residues that contain outliers for  $\geq 3$ , 2, 1 and 0 types of geometric quality criteria. A grey segment represents the fraction of residues that are not modelled. The numeric value for each fraction is indicated below the corresponding segment, with a dot representing fractions  $\leq 5\%$ . The upper red bar (where present) indicates the fraction of residues that have poor fit to the electron density. The numeric value is given above the bar.

Mol	Chain	Length	Quality of chain
1	A	292	<div> <div>8%</div> <div>71% 21% 6% ..</div> </div>
1	B	292	<div> <div>11%</div> <div>64% 23% 6% 8%</div> </div>
2	D	208	<div> <div>2%</div> <div>55% 14% • 28%</div> </div>
2	E	208	<div> <div>46%</div> <div>37% 27% 5% • 29%</div> </div>

The following table lists non-polymeric compounds, carbohydrate monomers and non-standard residues in protein, DNA, RNA chains that are outliers for geometric or electron-density-fit crite-

ria:

Mol	Type	Chain	Res	Chirality	Geometry	Clashes	Electron density
3	ALH	A	1293	-	-	X	-
3	ALH	B	1288	-	-	X	-

## 2 Entry composition

There are 4 unique types of molecules in this entry. The entry contains 7204 atoms, of which 0 are hydrogens and 0 are deuteriums.

In the tables below, the ZeroOcc column contains the number of atoms modelled with zero occupancy, the AltConf column contains the number of residues with at least one atom in alternate conformation and the Trace column contains the number of residues modelled with at most 2 atoms.

- Molecule 1 is a protein called CELL DIVISION PROTEIN KINASE 5.

Mol	Chain	Residues	Atoms					ZeroOcc	AltConf	Trace
1	A	288	Total	C	N	O	S	0	0	0
			2322	1492	399	419	12			
1	B	269	Total	C	N	O	S	0	0	1
			2155	1391	373	381	10			

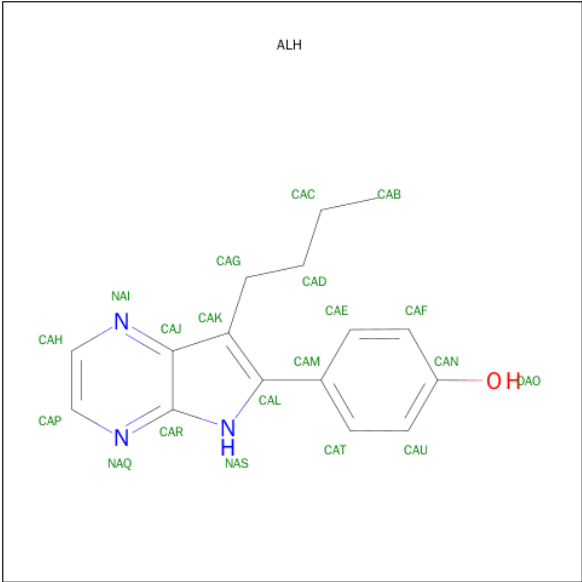
There are 2 discrepancies between the modelled and reference sequences:

Chain	Residue	Modelled	Actual	Comment	Reference
A	144	ASN	ASP	ENGINEERED MUTATION	UNP Q00535
B	144	ASN	ASP	ENGINEERED MUTATION	UNP Q00535

- Molecule 2 is a protein called CYCLIN-DEPENDENT KINASE 5 ACTIVATOR 1.

Mol	Chain	Residues	Atoms					ZeroOcc	AltConf	Trace
2	D	150	Total	C	N	O	S	0	0	1
			1202	771	199	221	11			
2	E	148	Total	C	N	O	S	0	0	1
			1191	765	197	218	11			

- Molecule 3 is 6-PHENYL[5H]PYRROLO[2,3-B]PYRAZINE (three-letter code: ALH) (formula: C<sub>16</sub>H<sub>17</sub>N<sub>3</sub>O).



Mol	Chain	Residues	Atoms				ZeroOcc	AltConf
3	A	1	Total	C	N	O	0	0
			20	16	3	1		
3	B	1	Total	C	N	O	0	0
			20	16	3	1		

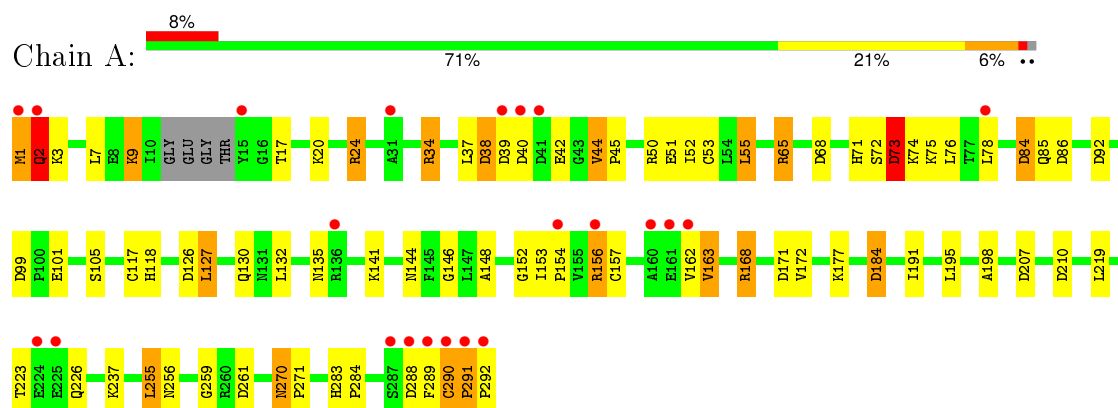
- Molecule 4 is water.

Mol	Chain	Residues	Atoms		ZeroOcc	AltConf
4	A	146	Total	O	0	0
			146	146		
4	B	76	Total	O	0	0
			76	76		
4	D	61	Total	O	0	0
			61	61		
4	E	11	Total	O	0	0
			11	11		

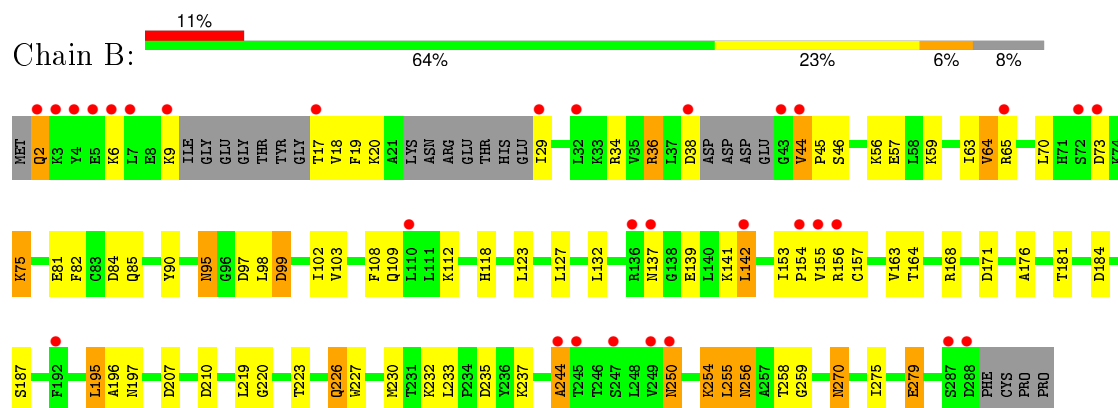
### 3 Residue-property plots [i](#)

These plots are drawn for all protein, RNA and DNA chains in the entry. The first graphic for a chain summarises the proportions of errors displayed in the second graphic. The second graphic shows the sequence view annotated by issues in geometry and electron density. Residues are color-coded according to the number of geometric quality criteria for which they contain at least one outlier: green = 0, yellow = 1, orange = 2 and red = 3 or more. A red dot above a residue indicates a poor fit to the electron density ( $RSRZ > 2$ ). Stretches of 2 or more consecutive residues without any outlier are shown as a green connector. Residues present in the sample, but not in the model, are shown in grey.

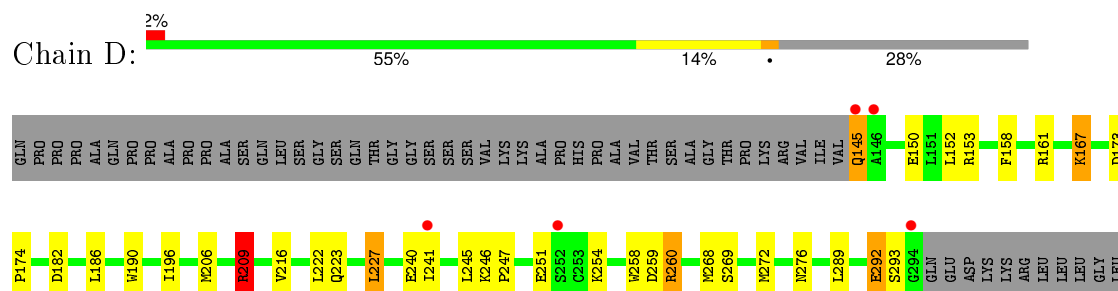
#### • Molecule 1: CELL DIVISION PROTEIN KINASE 5



#### • Molecule 1: CELL DIVISION PROTEIN KINASE 5



#### • Molecule 2: CYCLIN-DEPENDENT KINASE 5 ACTIVATOR 1





## 4 Data and refinement statistics

Property	Value	Source
Space group	P 32 2 1	Depositor
Cell constants a, b, c, $\alpha$ , $\beta$ , $\gamma$	117.72Å 117.72Å 156.79Å 90.00° 90.00° 120.00°	Depositor
Resolution (Å)	19.76 – 2.30 19.73 – 2.30	Depositor EDS
% Data completeness (in resolution range)	95.5 (19.76-2.30) 95.5 (19.73-2.30)	Depositor EDS
$R_{merge}$	0.10	Depositor
$R_{sym}$	(Not available)	Depositor
$\langle I/\sigma(I) \rangle$ <sup>1</sup>	2.34 (at 2.30Å)	Xtriage
Refinement program	REFMAC 5.1.24	Depositor
R, $R_{free}$	0.216 , 0.225 0.213 , 0.223	Depositor DCC
$R_{free}$ test set	2713 reflections (5.33%)	DCC
Wilson B-factor (Å <sup>2</sup> )	30.1	Xtriage
Anisotropy	0.078	Xtriage
Bulk solvent $k_{sol}$ (e/Å <sup>3</sup> ), $B_{sol}$ (Å <sup>2</sup> )	0.40 , 64.8	EDS
Estimated twinning fraction	0.025 for -h,-k,l	Xtriage
L-test for twinning <sup>2</sup>	$\langle  L  \rangle = 0.50$ , $\langle L^2 \rangle = 0.33$	Xtriage
Outliers	0 of 53636 reflections	Xtriage
$F_o, F_c$ correlation	0.93	EDS
Total number of atoms	7204	wwPDB-VP
Average B, all atoms (Å <sup>2</sup> )	24.0	wwPDB-VP

Xtriage's analysis on translational NCS is as follows: *The largest off-origin peak in the Patterson function is 3.02% of the height of the origin peak. No significant pseudotranslation is detected.*

<sup>1</sup>Intensities estimated from amplitudes.

<sup>2</sup>Theoretical values of  $\langle |L| \rangle$ ,  $\langle L^2 \rangle$  for acentric reflections are 0.5, 0.375 respectively for untwinned datasets, and 0.333, 0.2 for perfectly twinned datasets.



## 5 Model quality

### 5.1 Standard geometry

Bond lengths and bond angles in the following residue types are not validated in this section: ALH

The Z score for a bond length (or angle) is the number of standard deviations the observed value is removed from the expected value. A bond length (or angle) with  $|Z| > 5$  is considered an outlier worth inspection. RMSZ is the root-mean-square of all Z scores of the bond lengths (or angles).

Mol	Chain	Bond lengths		Bond angles	
		RMSZ	$\# Z  > 5$	RMSZ	$\# Z  > 5$
1	A	1.01	2/2377 (0.1%)	1.08	19/3216 (0.6%)
1	B	0.80	0/2203	0.95	12/2979 (0.4%)
2	D	1.03	1/1230 (0.1%)	1.01	5/1669 (0.3%)
2	E	0.92	2/1219 (0.2%)	0.97	11/1654 (0.7%)
All	All	0.94	5/7029 (0.1%)	1.01	47/9518 (0.5%)

Chiral center outliers are detected by calculating the chiral volume of a chiral center and verifying if the center is modelled as a planar moiety or with the opposite hand. A planarity outlier is detected by checking planarity of atoms in a peptide group, atoms in a mainchain group or atoms of a sidechain that are expected to be planar.

Mol	Chain	#Chirality outliers	#Planarity outliers
1	B	0	1

All (5) bond length outliers are listed below:

Mol	Chain	Res	Type	Atoms	Z	Observed(Å)	Ideal(Å)
2	E	171	PRO	N-CD	20.82	1.76	1.47
1	A	117	CYS	CB-SG	-5.98	1.72	1.81
1	A	135	ASN	CB-CG	-5.75	1.37	1.51
2	D	145	GLN	C-O	-5.37	1.13	1.23
2	E	210	ASP	N-CA	-5.16	1.36	1.46

All (47) bond angle outliers are listed below:

Mol	Chain	Res	Type	Atoms	Z	Observed(°)	Ideal(°)
1	A	65	ARG	NE-CZ-NH2	-11.86	114.37	120.30
2	D	209	ARG	NE-CZ-NH2	-11.57	114.52	120.30
2	E	171	PRO	CA-N-CD	-10.23	97.17	111.50
1	A	288	ASP	CB-CG-OD2	8.45	125.90	118.30

*Continued on next page...*

*Continued from previous page...*

Mol	Chain	Res	Type	Atoms	Z	Observed(°)	Ideal(°)
1	B	97	ASP	CB-CG-OD2	7.80	125.32	118.30
1	A	65	ARG	NE-CZ-NH1	7.46	124.03	120.30
2	E	278	ASP	CB-CG-OD2	7.32	124.89	118.30
1	B	210	ASP	CB-CG-OD2	7.30	124.87	118.30
1	A	207	ASP	CB-CG-OD2	7.24	124.82	118.30
2	E	293	SER	O-C-N	-7.08	111.17	123.20
1	A	184	ASP	CB-CG-OD2	6.88	124.49	118.30
2	E	182	ASP	CB-CG-OD2	6.76	124.39	118.30
1	A	68	ASP	CB-CG-OD2	6.68	124.31	118.30
1	B	38	ASP	CB-CG-OD2	6.65	124.29	118.30
1	B	75	LYS	N-CA-CB	6.57	122.42	110.60
1	A	261	ASP	CB-CG-OD2	6.53	124.18	118.30
1	A	198	ALA	N-CA-CB	6.48	119.18	110.10
2	D	209	ARG	NE-CZ-NH1	6.39	123.50	120.30
1	B	207	ASP	CB-CG-OD2	6.35	124.01	118.30
1	A	92	ASP	CB-CG-OD2	6.29	123.97	118.30
1	B	99	ASP	CB-CG-OD2	6.20	123.88	118.30
2	D	260	ARG	NE-CZ-NH2	-6.15	117.22	120.30
1	A	171	ASP	CB-CG-OD2	6.00	123.70	118.30
1	B	168	ARG	NE-CZ-NH2	-5.93	117.33	120.30
1	A	126	ASP	CB-CG-OD2	5.84	123.55	118.30
2	D	182	ASP	CB-CG-OD2	5.80	123.52	118.30
1	A	210	ASP	CB-CG-OD2	5.66	123.39	118.30
1	A	99	ASP	CB-CG-OD2	5.64	123.38	118.30
1	B	235	ASP	CB-CG-OD2	5.54	123.29	118.30
1	B	84	ASP	CB-CG-OD2	5.53	123.28	118.30
1	A	168	ARG	NE-CZ-NH2	-5.52	117.54	120.30
1	A	38	ASP	CB-CG-OD2	5.51	123.26	118.30
2	E	155	LEU	CA-CB-CG	5.40	127.71	115.30
1	A	86	ASP	CB-CG-OD1	5.38	123.14	118.30
2	E	288	ASP	CB-CG-OD2	5.35	123.11	118.30
1	B	171	ASP	CB-CG-OD2	5.34	123.10	118.30
2	E	173	ASP	CB-CG-OD2	5.27	123.04	118.30
1	A	84	ASP	CB-CG-OD2	5.23	123.01	118.30
1	A	73	ASP	CB-CG-OD2	5.22	123.00	118.30
2	E	212	ILE	N-CA-C	5.19	125.02	111.00
1	B	184	ASP	CB-CG-OD2	5.17	122.95	118.30
2	E	259	ASP	CB-CG-OD2	5.17	122.95	118.30
1	A	34	ARG	NE-CZ-NH1	-5.16	117.72	120.30
2	E	211	VAL	C-N-CA	5.12	134.49	121.70
2	E	171	PRO	N-CA-CB	5.05	109.36	103.30
2	D	206	MET	CG-SD-CE	-5.04	92.13	100.20

*Continued on next page...*

*Continued from previous page...*

Mol	Chain	Res	Type	Atoms	Z	Observed(°)	Ideal(°)
1	B	73	ASP	CB-CG-OD2	5.01	122.81	118.30

There are no chirality outliers.

All (1) planarity outliers are listed below:

Mol	Chain	Res	Type	Group
1	B	244	ALA	Peptide

## 5.2 Too-close contacts [i](#)

In the following table, the Non-H and H(model) columns list the number of non-hydrogen atoms and hydrogen atoms in the chain respectively. The H(added) column lists the number of hydrogen atoms added and optimized by MolProbity. The Clashes column lists the number of clashes within the asymmetric unit, whereas Symm-Clashes lists symmetry related clashes.

Mol	Chain	Non-H	H(model)	H(added)	Clashes	Symm-Clashes
1	A	2322	0	2345	69	0
1	B	2155	0	2200	68	0
2	D	1202	0	1187	32	0
2	E	1191	0	1177	46	0
3	A	20	0	16	9	0
3	B	20	0	16	7	0
4	A	146	0	0	5	0
4	B	76	0	0	3	1
4	D	61	0	0	8	0
4	E	11	0	0	2	0
All	All	7204	0	6941	206	1

The all-atom clashscore is defined as the number of clashes found per 1000 atoms (including hydrogen atoms). The all-atom clashscore for this structure is 15.

All (206) close contacts within the same asymmetric unit are listed below, sorted by their clash magnitude.

Atom-1	Atom-2	Interatomic distance (Å)	Clash overlap (Å)
2:E:171:PRO:N	2:E:171:PRO:CD	1.77	1.27
1:B:56:LYS:NZ	2:E:265:ILE:HG22	1.52	1.24
1:A:53:CYS:SG	4:D:2004:HOH:O	1.95	1.20
1:A:53:CYS:HB3	4:D:2004:HOH:O	1.51	1.10
2:D:158:PHE:HB2	2:D:292:GLU:HG3	1.37	1.07

*Continued on next page...*

*Continued from previous page...*

Atom-1	Atom-2	Interatomic distance (Å)	Clash overlap (Å)
1:A:1:MET:HB2	1:A:34:ARG:HH22	1.21	1.05
2:D:269:SER:HA	2:D:272:MET:HE3	1.39	1.05
1:A:53:CYS:CB	4:D:2004:HOH:O	1.97	1.01
2:D:254:LYS:HE2	2:D:258:TRP:HE1	1.25	0.98
1:A:156:ARG:HH11	1:A:156:ARG:HG3	1.29	0.95
1:B:250:ASN:H	1:B:250:ASN:HD22	1.15	0.95
1:B:56:LYS:HZ1	2:E:265:ILE:HG22	1.13	0.94
3:B:1288:ALH:HAT	3:B:1288:ALH:HAG1	1.49	0.93
1:B:44:VAL:H	1:B:45:PRO:CD	1.82	0.93
1:A:37:LEU:O	2:D:254:LYS:NZ	2.04	0.89
1:B:56:LYS:NZ	2:E:265:ILE:CG2	2.36	0.89
3:A:1293:ALH:HAT	3:A:1293:ALH:HAG1	1.53	0.89
1:B:56:LYS:HZ3	2:E:265:ILE:HG22	1.35	0.88
1:A:153:ILE:HG23	1:A:154:PRO:HD2	1.55	0.88
1:B:256:ASN:H	1:B:256:ASN:HD22	1.21	0.88
1:A:73:ASP:CG	1:A:74:LYS:H	1.77	0.87
2:E:211:VAL:HG12	2:E:212:ILE:CD1	2.10	0.82
1:A:156:ARG:HG3	1:A:156:ARG:NH1	1.93	0.82
1:B:250:ASN:H	1:B:250:ASN:ND2	1.77	0.81
1:B:250:ASN:HD22	1:B:250:ASN:N	1.79	0.79
1:A:85:GLN:HA	3:A:1293:ALH:CAF	2.12	0.79
2:D:209:ARG:HD2	4:D:2030:HOH:O	1.80	0.79
1:B:256:ASN:N	1:B:256:ASN:HD22	1.81	0.78
1:B:44:VAL:H	1:B:45:PRO:HD3	1.45	0.78
1:A:223:THR:H	1:A:226:GLN:HE21	1.31	0.77
2:E:198:PRO:O	2:E:202:VAL:HG12	1.85	0.77
1:A:290:CYS:C	1:A:292:PRO:HD2	2.04	0.77
1:A:144:ASN:HD21	3:A:1293:ALH:HAC2	1.48	0.75
3:B:1288:ALH:HAT	3:B:1288:ALH:CAG	2.16	0.75
1:B:36:ARG:HG2	1:B:36:ARG:HH11	1.52	0.74
1:A:1:MET:HB2	1:A:34:ARG:NH2	2.01	0.73
1:B:118:HIS:HD2	4:B:2074:HOH:O	1.72	0.72
1:B:56:LYS:HZ3	2:E:265:ILE:CG2	2.01	0.72
2:D:289:LEU:O	2:D:292:GLU:HB2	1.90	0.72
1:A:127:LEU:HD22	1:A:191:ILE:CD1	2.19	0.72
2:E:260:ARG:O	2:E:264:VAL:HG23	1.90	0.72
1:A:85:GLN:HA	3:A:1293:ALH:HAF	1.72	0.72
2:D:153:ARG:NH1	2:D:293:SER:HB2	2.04	0.72
1:B:85:GLN:HA	3:B:1288:ALH:CAF	2.20	0.71
1:A:52:ILE:HD11	1:A:78:LEU:HD21	1.70	0.71
2:E:170:SER:C	2:E:171:PRO:CD	2.59	0.71

*Continued on next page...*

*Continued from previous page...*

Atom-1	Atom-2	Interatomic distance (Å)	Clash overlap (Å)
1:A:44:VAL:HB	1:A:45:PRO:HD3	1.71	0.71
1:B:85:GLN:HA	3:B:1288:ALH:HAF	1.71	0.71
1:B:256:ASN:H	1:B:256:ASN:ND2	1.87	0.71
1:A:289:PHE:CE2	1:A:291:PRO:HG2	2.26	0.70
1:B:36:ARG:HH11	1:B:36:ARG:CG	2.04	0.70
2:E:170:SER:HA	2:E:171:PRO:CD	2.21	0.70
1:A:34:ARG:NH1	1:A:75:LYS:HE3	2.08	0.68
1:A:101:GLU:OE2	4:A:2052:HOH:O	2.11	0.68
1:B:44:VAL:N	1:B:45:PRO:HD3	2.08	0.67
2:D:153:ARG:HH12	2:D:293:SER:HB2	1.58	0.66
1:A:73:ASP:CG	1:A:74:LYS:N	2.41	0.66
1:B:34:ARG:HD3	1:B:75:LYS:HE2	1.78	0.66
1:B:57:GLU:OE2	2:E:269:SER:OG	2.13	0.66
2:E:190:TRP:HA	4:E:2002:HOH:O	1.95	0.66
1:B:220:GLY:HA3	1:B:244:ALA:HA	1.77	0.65
3:A:1293:ALH:HAT	3:A:1293:ALH:CAG	2.27	0.65
2:E:175:VAL:HG12	2:E:179:ARG:HG2	1.77	0.64
2:E:208:CYS:HA	2:E:211:VAL:HG23	1.79	0.64
1:B:56:LYS:HZ1	2:E:265:ILE:CG2	1.98	0.63
2:E:228:THR:HG21	2:E:260:ARG:HD2	1.81	0.63
1:B:137:ASN:OD1	1:B:139:GLU:HG3	1.98	0.62
1:B:6:LYS:HD3	1:B:19:PHE:CE2	2.35	0.62
1:B:20:LYS:HG3	1:B:82:PHE:CE2	2.34	0.61
2:E:197:THR:HG22	2:E:200:ASN:H	1.65	0.61
1:A:73:ASP:OD2	1:A:74:LYS:N	2.33	0.61
1:A:144:ASN:HD21	3:A:1293:ALH:CAC	2.15	0.60
1:A:290:CYS:O	1:A:292:PRO:HD2	2.02	0.60
1:A:168:ARG:HD3	1:A:172:VAL:HG12	1.85	0.59
1:A:144:ASN:ND2	3:A:1293:ALH:HAC2	2.16	0.59
1:A:118:HIS:HD2	4:A:2142:HOH:O	1.84	0.59
1:B:127:LEU:HB3	1:B:187:SER:HB3	1.86	0.57
1:B:81:GLU:OE2	1:B:141:LYS:HE3	2.04	0.57
1:B:164:THR:HG22	4:B:2030:HOH:O	2.04	0.57
1:A:1:MET:HE3	1:A:3:LYS:HB3	1.86	0.57
1:A:152:GLY:HA3	2:D:276:ASN:O	2.05	0.57
2:E:211:VAL:HG12	2:E:212:ILE:HD11	1.87	0.56
2:D:246:LYS:HB3	2:D:247:PRO:HD3	1.87	0.56
1:B:57:GLU:OE1	2:E:270:SER:HB3	2.06	0.56
1:B:2:GLN:HE22	1:B:70:LEU:HD11	1.70	0.56
2:D:173:ASP:HB2	2:D:174:PRO:HD3	1.87	0.56
1:A:50:ARG:HH11	1:A:50:ARG:HG2	1.72	0.55

*Continued on next page...*

*Continued from previous page...*

Atom-1	Atom-2	Interatomic distance (Å)	Clash overlap (Å)
1:B:95:ASN:ND2	4:B:2014:HOH:O	2.40	0.55
1:A:156:ARG:HH11	1:A:156:ARG:CG	2.09	0.55
1:A:153:ILE:HG23	1:A:154:PRO:CD	2.34	0.55
1:B:103:VAL:HG13	1:B:195:LEU:HB3	1.87	0.55
1:B:34:ARG:HG3	1:B:34:ARG:HH11	1.72	0.55
1:A:256:ASN:ND2	4:A:2124:HOH:O	2.40	0.55
2:E:211:VAL:HG12	2:E:212:ILE:HG12	1.89	0.55
1:B:6:LYS:HD3	1:B:19:PHE:CD2	2.42	0.54
1:B:153:ILE:HD11	2:E:237:MET:HE2	1.89	0.54
2:E:170:SER:CA	2:E:171:PRO:CD	2.85	0.54
2:D:269:SER:CA	2:D:272:MET:HE3	2.26	0.54
1:A:162:VAL:O	1:A:163:VAL:HG23	2.07	0.54
1:B:127:LEU:CD1	1:B:142:LEU:HD21	2.39	0.53
1:B:153:ILE:HG23	2:E:276:ASN:HA	1.91	0.53
1:A:1:MET:HE3	1:A:3:LYS:CB	2.38	0.53
2:E:211:VAL:HG12	2:E:212:ILE:CG1	2.38	0.53
2:D:150:GLU:OE2	2:D:153:ARG:CZ	2.57	0.53
3:A:1293:ALH:CAT	3:A:1293:ALH:HAG1	2.34	0.53
1:B:196:ALA:O	1:B:254:LYS:HB2	2.08	0.53
2:E:162:ARG:HH11	2:E:162:ARG:HG2	1.73	0.53
1:A:39:ASP:OD1	1:A:40:ASP:N	2.40	0.53
1:A:2:GLN:O	1:A:24:ARG:NH1	2.41	0.53
1:A:1:MET:O	1:A:3:LYS:N	2.43	0.52
1:B:18:VAL:C	1:B:19:PHE:CD1	2.82	0.52
1:B:65:ARG:HG2	1:B:65:ARG:HH11	1.74	0.52
1:B:90:TYR:HE2	1:B:98:LEU:HD22	1.74	0.52
2:D:245:LEU:HD22	2:D:254:LYS:HE3	1.92	0.52
1:A:118:HIS:HE1	1:A:184:ASP:OD1	1.92	0.52
2:D:158:PHE:HB2	2:D:292:GLU:CG	2.24	0.52
1:A:290:CYS:C	1:A:292:PRO:CD	2.75	0.52
1:B:20:LYS:O	1:B:20:LYS:HG2	2.08	0.52
1:B:109:GLN:HA	1:B:112:LYS:HE3	1.91	0.52
1:B:156:ARG:O	1:B:157:CYS:HB3	2.09	0.52
1:B:99:ASP:HB3	1:B:102:ILE:HG13	1.92	0.52
2:D:150:GLU:OE2	2:D:153:ARG:NH2	2.43	0.51
1:A:50:ARG:NH1	1:A:146:GLY:O	2.36	0.51
1:B:157:CYS:SG	2:E:239:ASN:ND2	2.83	0.51
1:B:44:VAL:H	1:B:45:PRO:HD2	1.70	0.51
2:D:145:GLN:N	2:D:150:GLU:HG2	2.25	0.51
1:A:1:MET:SD	1:A:1:MET:C	2.89	0.51
2:D:246:LYS:HD2	4:D:2041:HOH:O	2.09	0.51

*Continued on next page...*

*Continued from previous page...*

Atom-1	Atom-2	Interatomic distance (Å)	Clash overlap (Å)
1:A:52:ILE:HD11	1:A:78:LEU:CD2	2.41	0.51
2:D:209:ARG:CD	4:D:2030:HOH:O	2.48	0.50
1:B:99:ASP:HB3	1:B:102:ILE:CG1	2.42	0.49
2:E:251:GLU:OE2	2:E:256:ALA:HB3	2.12	0.49
2:D:245:LEU:CD2	2:D:254:LYS:HE3	2.43	0.49
1:B:36:ARG:NH1	1:B:36:ARG:CG	2.70	0.49
1:B:63:ILE:O	1:B:64:VAL:C	2.50	0.49
1:A:105:SER:HA	1:A:289:PHE:HZ	1.79	0.48
1:B:153:ILE:HD11	2:E:237:MET:CE	2.43	0.47
2:E:191:GLN:H	2:E:191:GLN:CD	2.17	0.47
1:A:283:HIS:CG	1:A:284:PRO:HD2	2.49	0.47
2:E:197:THR:O	2:E:201:VAL:HG23	2.15	0.47
1:A:255:LEU:HG	1:A:259:GLY:HA3	1.96	0.47
3:B:1288:ALH:CAT	3:B:1288:ALH:HAG1	2.34	0.47
2:E:211:VAL:CG1	2:E:225:VAL:HG11	2.45	0.47
2:E:246:LYS:HB3	2:E:247:PRO:HD3	1.97	0.47
2:D:254:LYS:HE2	2:D:258:TRP:NE1	2.10	0.47
2:D:246:LYS:HD2	2:D:246:LYS:O	2.14	0.47
1:B:127:LEU:HB3	1:B:187:SER:CB	2.45	0.46
1:A:71:HIS:ND1	2:D:259:ASP:OD1	2.43	0.46
1:A:162:VAL:C	1:A:163:VAL:HG23	2.36	0.46
2:E:176:LEU:O	2:E:180:SER:HB2	2.15	0.46
2:E:181:VAL:HG12	2:E:227:LEU:HD11	1.98	0.46
2:D:268:MET:HB2	2:D:272:MET:HE2	1.98	0.46
1:A:84:ASP:O	3:A:1293:ALH:HAF	2.16	0.46
1:B:226:GLN:HB3	1:B:226:GLN:HE21	1.58	0.45
1:B:279:GLU:O	1:B:279:GLU:HG3	2.15	0.45
1:B:123:LEU:HD22	1:B:181:THR:HA	1.99	0.45
1:B:34:ARG:HG3	1:B:34:ARG:NH1	2.30	0.45
2:E:191:GLN:HG3	4:E:2003:HOH:O	2.17	0.45
1:A:85:GLN:NE2	4:A:2039:HOH:O	2.22	0.44
2:E:208:CYS:HA	2:E:211:VAL:CG2	2.47	0.44
2:E:211:VAL:HG12	2:E:212:ILE:HD13	1.96	0.44
2:E:162:ARG:HG2	2:E:162:ARG:NH1	2.32	0.44
1:A:24:ARG:HH11	1:A:24:ARG:HG3	1.82	0.44
3:B:1288:ALH:CAG	3:B:1288:ALH:CAT	2.92	0.43
1:B:275:ILE:HG13	1:B:279:GLU:HG2	2.01	0.43
1:A:51:GLU:HG3	1:A:55:LEU:HD22	2.00	0.43
2:E:196:ILE:H	2:E:196:ILE:HG13	1.44	0.43
1:A:290:CYS:CB	1:A:291:PRO:CD	2.96	0.43
1:B:255:LEU:HG	1:B:259:GLY:HA3	2.01	0.43

*Continued on next page...*

*Continued from previous page...*

Atom-1	Atom-2	Interatomic distance (Å)	Clash overlap (Å)
1:A:270:ASN:C	1:A:270:ASN:HD22	2.20	0.43
1:A:38:ASP:HA	2:D:254:LYS:NZ	2.34	0.43
1:B:176:ALA:HB2	1:B:233:LEU:HD22	1.99	0.43
1:B:250:ASN:ND2	1:B:250:ASN:N	2.46	0.43
1:A:9:LYS:HB2	1:A:9:LYS:HE2	1.66	0.43
1:A:223:THR:OG1	1:A:226:GLN:HG3	2.18	0.43
2:E:199:ALA:O	2:E:202:VAL:HG13	2.18	0.43
1:A:50:ARG:HD2	1:A:148:ALA:O	2.19	0.43
2:D:251:GLU:CD	2:D:260:ARG:HH22	2.22	0.43
2:E:170:SER:HA	2:E:171:PRO:HD2	2.00	0.42
1:A:34:ARG:HH11	1:A:75:LYS:HE3	1.83	0.42
1:B:227:TRP:CD2	1:B:230:MET:HB3	2.55	0.42
2:E:263:SER:HA	2:E:266:ASN:HD22	1.84	0.42
2:D:216:VAL:HG11	2:D:222:LEU:HB2	2.01	0.42
1:B:108:PHE:CE2	1:B:112:LYS:HD3	2.55	0.42
2:D:167:LYS:NZ	4:D:2011:HOH:O	2.48	0.42
1:B:81:GLU:O	3:B:1288:ALH:HAP	2.20	0.42
1:A:51:GLU:CG	1:A:55:LEU:HD22	2.50	0.41
2:D:152:LEU:HD11	2:D:196:ILE:HG21	2.01	0.41
1:A:50:ARG:NH1	1:A:50:ARG:HG2	2.33	0.41
1:B:19:PHE:N	1:B:19:PHE:CD1	2.89	0.41
1:B:59:LYS:HD2	1:B:65:ARG:CZ	2.49	0.41
2:E:193:GLN:HB3	2:E:193:GLN:HE21	1.56	0.41
2:E:211:VAL:CG1	2:E:225:VAL:CG1	2.98	0.41
1:A:105:SER:HA	1:A:289:PHE:CZ	2.56	0.41
2:E:281:TYR:O	2:E:285:VAL:HG23	2.21	0.41
1:B:17:THR:HG23	1:B:18:VAL:HG23	2.01	0.41
2:D:223:GLN:HG2	2:D:227:LEU:HD22	2.03	0.41
1:A:157:CYS:HB2	1:A:177:LYS:HB3	2.03	0.41
1:A:39:ASP:CB	4:A:2009:HOH:O	2.69	0.40
1:A:7:LEU:HB2	1:A:20:LYS:HG2	2.02	0.40
1:B:270:ASN:C	1:B:270:ASN:HD22	2.25	0.40
1:A:50:ARG:CG	1:A:50:ARG:NH1	2.84	0.40
2:D:190:TRP:O	2:D:240:GLU:HG3	2.21	0.40
1:A:270:ASN:HA	1:A:271:PRO:HD2	1.95	0.40
1:A:76:LEU:HD12	1:A:76:LEU:HA	1.66	0.40
2:D:161:ARG:HD2	4:D:2009:HOH:O	2.21	0.40

All (1) symmetry-related close contacts are listed below. The label for Atom-2 includes the symmetry operator and encoded unit-cell translations to be applied.



Atom-1	Atom-2	Interatomic distance (Å)	Clash overlap (Å)
4:B:2019:HOH:O	4:B:2019:HOH:O[5_555]	1.91	0.29

## 5.3 Torsion angles [i](#)

### 5.3.1 Protein backbone [i](#)

In the following table, the Percentiles column shows the percent Ramachandran outliers of the chain as a percentile score with respect to all X-ray entries followed by that with respect to entries of similar resolution.

The Analysed column shows the number of residues for which the backbone conformation was analysed, and the total number of residues.

Mol	Chain	Analysed	Favoured	Allowed	Outliers	Percentiles	
1	A	284/292 (97%)	261 (92%)	17 (6%)	6 (2%)	9	7
1	B	261/292 (89%)	240 (92%)	17 (6%)	4 (2%)	13	12
2	D	148/208 (71%)	146 (99%)	2 (1%)	0	100	100
2	E	146/208 (70%)	113 (77%)	26 (18%)	7 (5%)	3	1
All	All	839/1000 (84%)	760 (91%)	62 (7%)	17 (2%)	9	7

All (17) Ramachandran outliers are listed below:

Mol	Chain	Res	Type
1	A	2	GLN
1	A	44	VAL
1	B	44	VAL
2	E	170	SER
1	A	42	GLU
1	B	163	VAL
2	E	195	PHE
1	A	163	VAL
1	A	290	CYS
1	A	291	PRO
2	E	156	GLY
2	E	168	HIS
1	B	154	PRO
2	E	211	VAL
2	E	293	SER
1	B	64	VAL
2	E	217	GLY

### 5.3.2 Protein sidechains ⓘ

In the following table, the Percentiles column shows the percent sidechain outliers of the chain as a percentile score with respect to all X-ray entries followed by that with respect to entries of similar resolution.

The Analysed column shows the number of residues for which the sidechain conformation was analysed, and the total number of residues.

Mol	Chain	Analysed	Rotameric	Outliers	Percentiles	
1	A	258/260 (99%)	239 (93%)	19 (7%)	17	21
1	B	239/260 (92%)	216 (90%)	23 (10%)	10	12
2	D	138/186 (74%)	132 (96%)	6 (4%)	35	47
2	E	137/186 (74%)	105 (77%)	32 (23%)	1	1
All	All	772/892 (86%)	692 (90%)	80 (10%)	9	10

All (80) residues with a non-rotameric sidechain are listed below:

Mol	Chain	Res	Type
1	A	1	MET
1	A	2	GLN
1	A	9	LYS
1	A	17	THR
1	A	24	ARG
1	A	55	LEU
1	A	65	ARG
1	A	72	SER
1	A	73	ASP
1	A	127	LEU
1	A	130	GLN
1	A	132	LEU
1	A	141	LYS
1	A	156	ARG
1	A	195	LEU
1	A	219	LEU
1	A	237	LYS
1	A	255	LEU
1	A	270	ASN
1	B	2	GLN
1	B	9	LYS
1	B	29	ILE
1	B	36	ARG
1	B	46	SER

*Continued on next page...*

*Continued from previous page...*

Mol	Chain	Res	Type
1	B	95	ASN
1	B	132	LEU
1	B	142	LEU
1	B	155	VAL
1	B	195	LEU
1	B	197	ASN
1	B	219	LEU
1	B	223	THR
1	B	226	GLN
1	B	232	LYS
1	B	237	LYS
1	B	250	ASN
1	B	254	LYS
1	B	255	LEU
1	B	256	ASN
1	B	258	THR
1	B	270	ASN
1	B	279	GLU
2	D	167	LYS
2	D	186	LEU
2	D	209	ARG
2	D	227	LEU
2	D	241	ILE
2	D	292	GLU
2	E	148	THR
2	E	150	GLU
2	E	163	CYS
2	E	164	TYR
2	E	168	HIS
2	E	170	SER
2	E	171	PRO
2	E	172	THR
2	E	177	TRP
2	E	180	SER
2	E	185	LEU
2	E	191	GLN
2	E	192	ASP
2	E	193	GLN
2	E	196	ILE
2	E	197	THR
2	E	202	VAL
2	E	209	ARG

*Continued on next page...*

*Continued from previous page...*

Mol	Chain	Res	Type
2	E	212	ILE
2	E	214	SER
2	E	216	VAL
2	E	218	SER
2	E	219	ASP
2	E	220	HIS
2	E	223	GLN
2	E	235	SER
2	E	246	LYS
2	E	252	SER
2	E	260	ARG
2	E	263	SER
2	E	275	ILE
2	E	283	THR

Some sidechains can be flipped to improve hydrogen bonding and reduce clashes. All (22) such sidechains are listed below:

Mol	Chain	Res	Type
1	A	2	GLN
1	A	62	ASN
1	A	118	HIS
1	A	135	ASN
1	A	144	ASN
1	A	226	GLN
1	A	270	ASN
1	B	2	GLN
1	B	71	HIS
1	B	95	ASN
1	B	118	HIS
1	B	131	ASN
1	B	197	ASN
1	B	250	ASN
1	B	256	ASN
1	B	270	ASN
1	B	273	GLN
2	D	188	GLN
2	E	191	GLN
2	E	193	GLN
2	E	239	ASN
2	E	266	ASN

### 5.3.3 RNA ⓘ

There are no RNA molecules in this entry.

## 5.4 Non-standard residues in protein, DNA, RNA chains ⓘ

There are no non-standard protein/DNA/RNA residues in this entry.

## 5.5 Carbohydrates ⓘ

There are no carbohydrates in this entry.

## 5.6 Ligand geometry ⓘ

2 ligands are modelled in this entry.

In the following table, the Counts columns list the number of bonds (or angles) for which Mogul statistics could be retrieved, the number of bonds (or angles) that are observed in the model and the number of bonds (or angles) that are defined in the chemical component dictionary. The Link column lists molecule types, if any, to which the group is linked. The Z score for a bond length (or angle) is the number of standard deviations the observed value is removed from the expected value. A bond length (or angle) with  $|Z| > 2$  is considered an outlier worth inspection. RMSZ is the root-mean-square of all Z scores of the bond lengths (or angles).

Mol	Type	Chain	Res	Link	Bond lengths			Bond angles		
					Counts	RMSZ	$\# Z  > 2$	Counts	RMSZ	$\# Z  > 2$
3	ALH	A	1293	-	21,22,22	2.56	4 (19%)	19,30,30	2.43	6 (31%)
3	ALH	B	1288	-	21,22,22	2.53	3 (14%)	19,30,30	1.95	4 (21%)

In the following table, the Chirals column lists the number of chiral outliers, the number of chiral centers analysed, the number of these observed in the model and the number defined in the chemical component dictionary. Similar counts are reported in the Torsion and Rings columns. '-' means no outliers of that kind were identified.

Mol	Type	Chain	Res	Link	Chirals	Torsions	Rings
3	ALH	A	1293	-	-	0/8/8/8	0/3/3/3
3	ALH	B	1288	-	-	0/8/8/8	0/3/3/3

All (7) bond length outliers are listed below:

Mol	Chain	Res	Type	Atoms	Z	Observed(Å)	Ideal(Å)
3	A	1293	ALH	CAM-CAL	-8.91	1.39	1.49

*Continued on next page...*

*Continued from previous page...*

Mol	Chain	Res	Type	Atoms	Z	Observed(Å)	Ideal(Å)
3	B	1288	ALH	CAM-CAL	-8.78	1.39	1.49
3	A	1293	ALH	OAO-CAN	-2.61	1.30	1.37
3	B	1288	ALH	CAR-NAQ	3.96	1.43	1.37
3	A	1293	ALH	CAR-NAQ	4.27	1.44	1.37
3	A	1293	ALH	CAJ-NAI	4.86	1.43	1.37
3	B	1288	ALH	CAJ-NAI	5.25	1.44	1.37

All (10) bond angle outliers are listed below:

Mol	Chain	Res	Type	Atoms	Z	Observed(°)	Ideal(°)
3	B	1288	ALH	CAM-CAL-CAK	-5.03	120.81	129.57
3	A	1293	ALH	CAE-CAM-CAL	-4.12	114.17	120.60
3	A	1293	ALH	CAM-CAL-CAK	-3.99	122.63	129.57
3	B	1288	ALH	CAE-CAM-CAL	-2.66	116.45	120.60
3	A	1293	ALH	CAU-CAT-CAM	-2.23	117.88	121.14
3	B	1288	ALH	CAD-CAG-CAK	2.62	116.03	112.16
3	A	1293	ALH	CAT-CAM-CAL	3.00	125.28	120.60
3	A	1293	ALH	CAG-CAK-CAL	3.73	132.38	127.64
3	B	1288	ALH	CAG-CAK-CAL	4.85	133.81	127.64
3	A	1293	ALH	CAD-CAG-CAK	6.18	121.28	112.16

There are no chirality outliers.

There are no torsion outliers.

There are no ring outliers.

2 monomers are involved in 16 short contacts:

Mol	Chain	Res	Type	Clashes	Symm-Clashes
3	A	1293	ALH	9	0
3	B	1288	ALH	7	0

## 5.7 Other polymers [i](#)

There are no such residues in this entry.

## 5.8 Polymer linkage issues [i](#)

There are no chain breaks in this entry.

## 6 Fit of model and data ⓘ

### 6.1 Protein, DNA and RNA chains ⓘ

In the following table, the column labelled ‘#RSRZ> 2’ contains the number (and percentage) of RSRZ outliers, followed by percent RSRZ outliers for the chain as percentile scores relative to all X-ray entries and entries of similar resolution. The OWAB column contains the minimum, median, 95<sup>th</sup> percentile and maximum values of the occupancy-weighted average B-factor per residue. The column labelled ‘Q< 0.9’ lists the number of (and percentage) of residues with an average occupancy less than 0.9.

Mol	Chain	Analysed	<RSRZ>	#RSRZ>2	OWAB(Å <sup>2</sup> )	Q<0.9
1	A	288/292 (98%)	0.36	22 (7%) 17 24	14, 21, 38, 60	0
1	B	269/292 (92%)	0.59	31 (11%) 6 10	14, 24, 34, 41	0
2	D	150/208 (72%)	0.00	5 (3%) 50 59	17, 21, 30, 33	0
2	E	148/208 (71%)	4.08	95 (64%) 0 0	16, 26, 30, 31	0
All	All	855/1000 (85%)	1.01	153 (17%) 2 3	14, 23, 34, 60	0

All (153) RSRZ outliers are listed below:

Mol	Chain	Res	Type	RSRZ
2	E	187	LEU	19.8
2	E	170	SER	13.9
2	E	151	LEU	13.4
2	E	160	CYS	11.6
2	E	168	HIS	11.5
2	E	186	LEU	11.4
2	E	171	PRO	11.2
2	E	293	SER	11.1
2	E	212	ILE	11.1
2	E	183	ARG	10.8
1	A	292	PRO	10.5
2	E	158	PHE	10.4
1	A	290	CYS	10.0
2	E	291	ASN	9.7
2	E	152	LEU	9.4
2	E	163	CYS	9.3
2	E	172	THR	9.2
2	E	156	GLY	9.1
2	E	211	VAL	9.0
2	E	149	SER	8.8
2	E	294	GLY	8.7

*Continued on next page...*

*Continued from previous page...*

Mol	Chain	Res	Type	RSRZ
2	E	164	TYR	8.6
2	E	166	LEU	8.6
2	E	148	THR	8.4
2	E	155	LEU	8.1
2	E	217	GLY	8.0
2	E	154	CYS	7.8
2	E	188	GLN	7.6
2	E	162	ARG	7.6
2	E	178	LEU	7.5
1	B	288	ASP	7.3
1	A	41	ASP	7.3
2	E	190	TRP	7.2
2	E	161	ARG	7.1
2	E	177	TRP	6.9
1	A	15	TYR	6.7
2	E	210	ASP	6.7
2	E	290	LYS	6.7
2	E	147	SER	6.5
2	E	174	PRO	6.5
2	E	169	LEU	6.5
1	B	2	GLN	6.4
2	E	153	ARG	6.3
2	E	292	GLU	6.1
2	E	167	LYS	5.9
2	E	175	VAL	5.8
1	B	43	GLY	5.7
2	E	215	GLU	5.6
1	A	291	PRO	5.6
2	E	159	LEU	5.5
2	E	220	HIS	5.3
2	E	241	ILE	5.3
1	B	44	VAL	5.3
2	E	165	ARG	5.3
1	B	245	THR	5.3
2	E	173	ASP	5.2
2	E	267	LEU	5.2
2	E	213	SER	5.2
1	B	29	ILE	5.1
1	A	136	ARG	4.9
1	B	136	ARG	4.8
2	E	150	GLU	4.7
2	E	253	CYS	4.6

*Continued on next page...*



*Continued from previous page...*

Mol	Chain	Res	Type	RSRZ
2	E	189	GLY	4.6
2	E	214	SER	4.6
1	B	73	ASP	4.5
2	E	280	HIS	4.5
1	A	40	ASP	4.5
2	E	157	GLU	4.3
2	E	246	LYS	4.3
2	E	218	SER	4.2
2	E	281	TYR	4.2
2	E	216	VAL	4.2
2	E	263	SER	4.2
2	E	184	SER	4.1
2	E	249	LEU	4.1
2	E	288	ASP	4.1
1	B	4	TYR	4.0
2	E	209	ARG	3.8
2	E	205	TYR	3.8
1	B	156	ARG	3.8
1	B	154	PRO	3.8
1	B	9	LYS	3.7
1	B	244	ALA	3.7
2	E	179	ARG	3.7
2	E	194	GLY	3.7
2	E	286	PHE	3.6
2	E	279	PRO	3.6
2	E	289	LEU	3.6
2	E	287	SER	3.6
2	E	219	ASP	3.6
2	E	252	SER	3.5
2	E	196	ILE	3.4
2	E	247	PRO	3.4
1	A	160	ALA	3.4
1	A	154	PRO	3.4
2	E	180	SER	3.3
2	E	176	LEU	3.3
1	A	39	ASP	3.2
1	B	287	SER	3.2
2	E	255	GLU	3.2
1	A	161	GLU	3.2
2	E	198	PRO	3.1
1	A	1	MET	3.1
1	B	5	GLU	3.1

*Continued on next page...*

*Continued from previous page...*

Mol	Chain	Res	Type	RSRZ
2	E	193	GLN	3.1
2	E	182	ASP	3.1
1	B	7	LEU	3.0
1	B	250	ASN	3.0
1	B	6	LYS	3.0
1	B	247	SER	2.9
2	D	145	GLN	2.9
1	A	288	ASP	2.9
2	E	251	GLU	2.9
1	A	2	GLN	2.9
1	B	17	THR	2.9
1	A	156	ARG	2.9
1	B	3	LYS	2.9
1	B	137	ASN	2.9
1	A	224	GLU	2.8
2	E	250	VAL	2.8
2	E	232	LEU	2.7
1	A	225	GLU	2.7
2	E	192	ASP	2.7
2	E	185	LEU	2.7
1	B	110	LEU	2.6
1	A	289	PHE	2.6
2	D	294	GLY	2.5
1	B	32	LEU	2.5
1	B	65	ARG	2.5
2	E	268	MET	2.5
2	E	242	SER	2.4
1	B	155	VAL	2.4
1	B	38	ASP	2.4
1	B	249	VAL	2.4
2	D	241	ILE	2.4
1	B	142	LEU	2.3
1	A	31	ALA	2.3
2	E	208	CYS	2.3
1	A	162	VAL	2.2
2	E	243	TYR	2.2
1	A	287	SER	2.2
2	E	181	VAL	2.1
2	E	254	LYS	2.1
2	E	223	GLN	2.1
2	D	146	ALA	2.1
2	D	252	SER	2.1

*Continued on next page...*

*Continued from previous page...*

Mol	Chain	Res	Type	RSRZ
1	A	78	LEU	2.1
2	E	191	GLN	2.1
1	B	72	SER	2.1
2	E	233	SER	2.1
1	B	192	PHE	2.0
2	E	236	TYR	2.0

## 6.2 Non-standard residues in protein, DNA, RNA chains [i](#)

There are no non-standard protein/DNA/RNA residues in this entry.

## 6.3 Carbohydrates [i](#)

There are no carbohydrates in this entry.

## 6.4 Ligands [i](#)

In the following table, the Atoms column lists the number of modelled atoms in the group and the number defined in the chemical component dictionary. LLDF column lists the quality of electron density of the group with respect to its neighbouring residues in protein, DNA or RNA chains. The B-factors column lists the minimum, median, 95<sup>th</sup> percentile and maximum values of B factors of atoms in the group. The column labelled 'Q< 0.9' lists the number of atoms with occupancy less than 0.9.

Mol	Type	Chain	Res	Atoms	RSCC	RSR	LLDF	B-factors( $\text{\AA}^2$ )	Q<0.9
3	ALH	A	1293	20/20	0.94	0.14	-0.17	18,23,29,34	0
3	ALH	B	1288	20/20	0.86	0.15	-0.26	22,26,31,32	0

## 6.5 Other polymers [i](#)

There are no such residues in this entry.