



Full wwPDB X-ray Structure Validation Report ⓘ

Jan 11, 2017 – 12:38 PM EST

PDB ID : 4UND
Title : HUMAN ARTD1 (PARP1) - CATALYTIC DOMAIN IN COMPLEX WITH
INHIBITOR TALAZOPARIB
Authors : Karlberg, T.; Thorsell, A.G.; Ekblad, T.; Klepsch, M.; Pinto, A.F.; Tre-
saugues, L.; Moche, M.; Schuler, H.
Deposited on : 2014-05-27
Resolution : 2.20 Å(reported)

This is a Full wwPDB X-ray Structure Validation Report for a publicly released PDB entry.

We welcome your comments at validation@mail.wwpdb.org

A user guide is available at

<http://wwpdb.org/validation/2016/XrayValidationReportHelp>

with specific help available everywhere you see the ⓘ symbol.

The following versions of software and data (see [references ⓘ](#)) were used in the production of this report:

MolProbity	:	4.02b-467
Mogul	:	unknown
Xtriage (Phenix)	:	1.9-1692
EDS	:	rb-20028442
Percentile statistics	:	20151230.v01 (using entries in the PDB archive December 30th 2015)
Refmac	:	5.8.0135
CCP4	:	6.5.0
Ideal geometry (proteins)	:	Engh & Huber (2001)
Ideal geometry (DNA, RNA)	:	Parkinson et al. (1996)
Validation Pipeline (wwPDB-VP)	:	rb-20028442

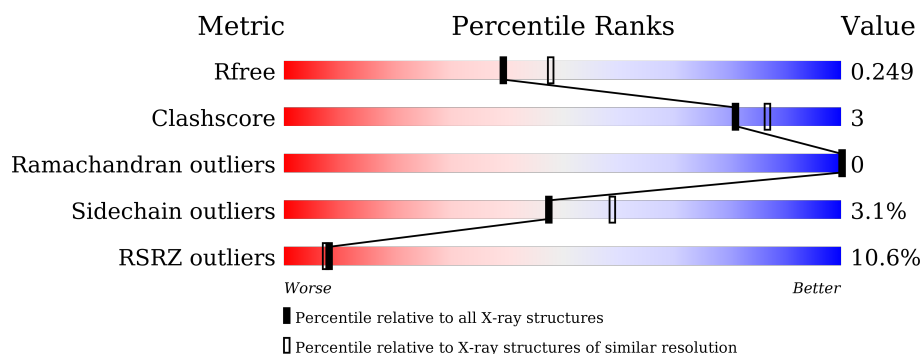
1 Overall quality at a glance

The following experimental techniques were used to determine the structure:

X-RAY DIFFRACTION

The reported resolution of this entry is 2.20 Å.

Percentile scores (ranging between 0-100) for global validation metrics of the entry are shown in the following graphic. The table shows the number of entries on which the scores are based.



Metric	Whole archive (#Entries)	Similar resolution (#Entries, resolution range(Å))
R_{free}	91344	3774 (2.20-2.20)
Clashscore	102246	4477 (2.20-2.20)
Ramachandran outliers	100387	4404 (2.20-2.20)
Sidechain outliers	100360	4405 (2.20-2.20)
RSRZ outliers	91569	3781 (2.20-2.20)

The table below summarises the geometric issues observed across the polymeric chains and their fit to the electron density. The red, orange, yellow and green segments on the lower bar indicate the fraction of residues that contain outliers for ≥ 3 , 2, 1 and 0 types of geometric quality criteria. A grey segment represents the fraction of residues that are not modelled. The numeric value for each fraction is indicated below the corresponding segment, with a dot representing fractions $\leq 5\%$. The upper red bar (where present) indicates the fraction of residues that have poor fit to the electron density. The numeric value is given above the bar.

Mol	Chain	Length	Quality of chain
1	A	373	<div> <div>8%</div> <div>84%</div> <div>10%</div> <div>• 5%</div> </div>
1	B	373	<div> <div>12%</div> <div>84%</div> <div>9%</div> <div>• 6%</div> </div>

The following table lists non-polymeric compounds, carbohydrate monomers and non-standard residues in protein, DNA, RNA chains that are outliers for geometric or electron-density-fit criteria:

Mol	Type	Chain	Res	Chirality	Geometry	Clashes	Electron density
2	2YQ	A	2011	-	-	-	X
3	NA	B	2012	-	-	-	X

2 Entry composition

There are 4 unique types of molecules in this entry. The entry contains 5677 atoms, of which 0 are hydrogens and 0 are deuteriums.

In the tables below, the ZeroOcc column contains the number of atoms modelled with zero occupancy, the AltConf column contains the number of residues with at least one atom in alternate conformation and the Trace column contains the number of residues modelled with at most 2 atoms.

- Molecule 1 is a protein called POLY [ADP-RIBOSE] POLYMERASE 1.

Mol	Chain	Residues	Atoms					ZeroOcc	AltConf	Trace
1	A	356	Total	C	N	O	S	0	0	0
			2806	1787	473	534	12			
1	B	349	Total	C	N	O	S	0	0	0
			2744	1746	464	523	11			

There are 48 discrepancies between the modelled and reference sequences:

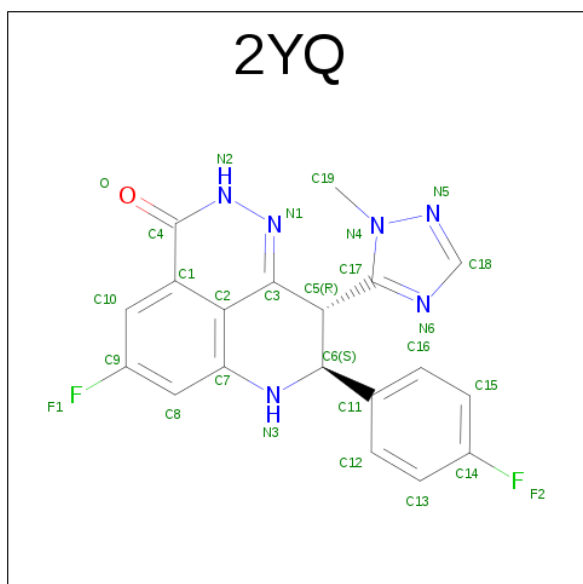
Chain	Residue	Modelled	Actual	Comment	Reference
A	639	MET	-	EXPRESSION TAG	UNP P09874
A	640	HIS	-	EXPRESSION TAG	UNP P09874
A	641	HIS	-	EXPRESSION TAG	UNP P09874
A	642	HIS	-	EXPRESSION TAG	UNP P09874
A	643	HIS	-	EXPRESSION TAG	UNP P09874
A	644	HIS	-	EXPRESSION TAG	UNP P09874
A	645	HIS	-	EXPRESSION TAG	UNP P09874
A	646	SER	-	EXPRESSION TAG	UNP P09874
A	647	SER	-	EXPRESSION TAG	UNP P09874
A	648	GLY	-	EXPRESSION TAG	UNP P09874
A	649	VAL	-	EXPRESSION TAG	UNP P09874
A	650	ASP	-	EXPRESSION TAG	UNP P09874
A	651	LEU	-	EXPRESSION TAG	UNP P09874
A	652	GLY	-	EXPRESSION TAG	UNP P09874
A	653	THR	-	EXPRESSION TAG	UNP P09874
A	654	GLU	-	EXPRESSION TAG	UNP P09874
A	655	ASN	-	EXPRESSION TAG	UNP P09874
A	656	LEU	-	EXPRESSION TAG	UNP P09874
A	657	TYR	-	EXPRESSION TAG	UNP P09874
A	658	PHE	-	EXPRESSION TAG	UNP P09874
A	659	GLN	-	EXPRESSION TAG	UNP P09874
A	660	SER	-	EXPRESSION TAG	UNP P09874
A	661	MET	-	EXPRESSION TAG	UNP P09874
A	762	ALA	VAL	VARIANT	UNP P09874
B	639	MET	-	EXPRESSION TAG	UNP P09874

Continued on next page...

Continued from previous page...

Chain	Residue	Modelled	Actual	Comment	Reference
B	640	HIS	-	EXPRESSION TAG	UNP P09874
B	641	HIS	-	EXPRESSION TAG	UNP P09874
B	642	HIS	-	EXPRESSION TAG	UNP P09874
B	643	HIS	-	EXPRESSION TAG	UNP P09874
B	644	HIS	-	EXPRESSION TAG	UNP P09874
B	645	HIS	-	EXPRESSION TAG	UNP P09874
B	646	SER	-	EXPRESSION TAG	UNP P09874
B	647	SER	-	EXPRESSION TAG	UNP P09874
B	648	GLY	-	EXPRESSION TAG	UNP P09874
B	649	VAL	-	EXPRESSION TAG	UNP P09874
B	650	ASP	-	EXPRESSION TAG	UNP P09874
B	651	LEU	-	EXPRESSION TAG	UNP P09874
B	652	GLY	-	EXPRESSION TAG	UNP P09874
B	653	THR	-	EXPRESSION TAG	UNP P09874
B	654	GLU	-	EXPRESSION TAG	UNP P09874
B	655	ASN	-	EXPRESSION TAG	UNP P09874
B	656	LEU	-	EXPRESSION TAG	UNP P09874
B	657	TYR	-	EXPRESSION TAG	UNP P09874
B	658	PHE	-	EXPRESSION TAG	UNP P09874
B	659	GLN	-	EXPRESSION TAG	UNP P09874
B	660	SER	-	EXPRESSION TAG	UNP P09874
B	661	MET	-	EXPRESSION TAG	UNP P09874
B	762	ALA	VAL	VARIANT	UNP P09874

- Molecule 2 is (8S,9R)-5-fluoro-8-(4-fluorophenyl)-9-(1-methyl-1H-1,2,4-triazol-5-yl)-2,7,8,9-tetrahydro-3H-pyrido[4,3,2-de]phthalazin-3-one (three-letter code: 2YQ) (formula: C₁₉H₁₄F₂N₆O).



Mol	Chain	Residues	Atoms					ZeroOcc	AltConf
2	A	1	Total	C	F	N	O	0	0
			28	19	2	6	1		
2	B	1	Total	C	F	N	O	0	0
			28	19	2	6	1		

- Molecule 3 is SODIUM ION (three-letter code: NA) (formula: Na).

Mol	Chain	Residues	Atoms		ZeroOcc	AltConf
3	B	1	Total	Na	0	0
			1	1		

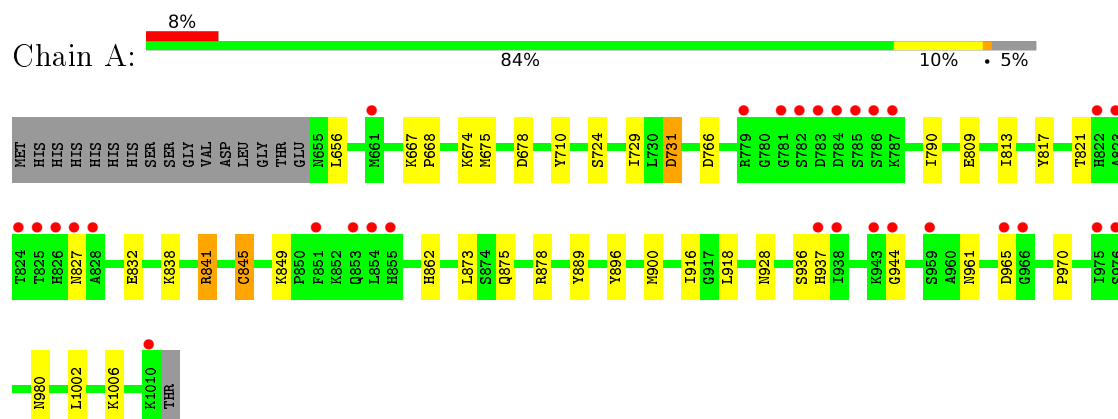
- Molecule 4 is water.

Mol	Chain	Residues	Atoms		ZeroOcc	AltConf
4	A	55	Total	O	0	0
			55	55		
4	B	15	Total	O	0	0
			15	15		

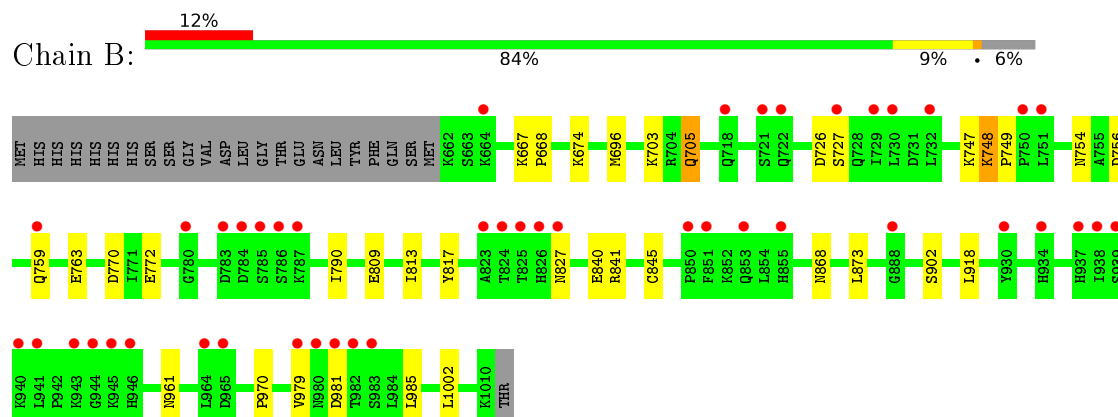
3 Residue-property plots [i](#)

These plots are drawn for all protein, RNA and DNA chains in the entry. The first graphic for a chain summarises the proportions of errors displayed in the second graphic. The second graphic shows the sequence view annotated by issues in geometry and electron density. Residues are color-coded according to the number of geometric quality criteria for which they contain at least one outlier: green = 0, yellow = 1, orange = 2 and red = 3 or more. A red dot above a residue indicates a poor fit to the electron density ($\text{RSRZ} > 2$). Stretches of 2 or more consecutive residues without any outlier are shown as a green connector. Residues present in the sample, but not in the model, are shown in grey.

• Molecule 1: POLY [ADP-RIBOSE] POLYMERASE 1



• Molecule 1: POLY [ADP-RIBOSE] POLYMERASE 1



4 Data and refinement statistics

Property	Value	Source
Space group	P 41 21 2	Depositor
Cell constants a, b, c, α , β , γ	103.45Å 103.45Å 168.54Å 90.00° 90.00° 90.00°	Depositor
Resolution (Å)	46.27 – 2.20 46.27 – 2.20	Depositor EDS
% Data completeness (in resolution range)	100.0 (46.27-2.20) 100.0 (46.27-2.20)	Depositor EDS
R_{merge}	0.09	Depositor
R_{sym}	(Not available)	Depositor
$\langle I/\sigma(I) \rangle$ ¹	2.57 (at 2.20Å)	Xtriage
Refinement program	REFMAC	Depositor
R, R_{free}	0.226 , 0.246 0.230 , 0.249	Depositor DCC
R_{free} test set	2358 reflections (5.26%)	DCC
Wilson B-factor (Å ²)	40.4	Xtriage
Anisotropy	0.218	Xtriage
Bulk solvent k_{sol} (e/Å ³), B_{sol} (Å ²)	0.32 , 39.9	EDS
L-test for twinning ²	$\langle L \rangle = 0.48$, $\langle L^2 \rangle = 0.31$	Xtriage
Estimated twinning fraction	No twinning to report.	Xtriage
F_o, F_c correlation	0.94	EDS
Total number of atoms	5677	wwPDB-VP
Average B, all atoms (Å ²)	60.0	wwPDB-VP

Xtriage's analysis on translational NCS is as follows: *The largest off-origin peak in the Patterson function is 4.30% of the height of the origin peak. No significant pseudotranslation is detected.*

¹Intensities estimated from amplitudes.

²Theoretical values of $\langle |L| \rangle$, $\langle L^2 \rangle$ for acentric reflections are 0.5, 0.333 respectively for untwinned datasets, and 0.375, 0.2 for perfectly twinned datasets.

5 Model quality [i](#)

5.1 Standard geometry [i](#)

Bond lengths and bond angles in the following residue types are not validated in this section: NA, 2YQ

The Z score for a bond length (or angle) is the number of standard deviations the observed value is removed from the expected value. A bond length (or angle) with $|Z| > 5$ is considered an outlier worth inspection. RMSZ is the root-mean-square of all Z scores of the bond lengths (or angles).

Mol	Chain	Bond lengths		Bond angles	
		RMSZ	$\# Z > 5$	RMSZ	$\# Z > 5$
1	A	0.66	1/2860 (0.0%)	0.79	4/3859 (0.1%)
1	B	0.58	0/2796	0.74	0/3773
All	All	0.62	1/5656 (0.0%)	0.77	4/7632 (0.1%)

All (1) bond length outliers are listed below:

Mol	Chain	Res	Type	Atoms	Z	Observed(Å)	Ideal(Å)
1	A	731	ASP	CB-CG	-6.38	1.38	1.51

All (4) bond angle outliers are listed below:

Mol	Chain	Res	Type	Atoms	Z	Observed(°)	Ideal(°)
1	A	841	ARG	NE-CZ-NH2	-8.86	115.87	120.30
1	A	841	ARG	NE-CZ-NH1	6.54	123.57	120.30
1	A	731	ASP	CB-CG-OD2	-6.42	112.52	118.30
1	A	678	ASP	CB-CG-OD1	5.09	122.88	118.30

There are no chirality outliers.

There are no planarity outliers.

5.2 Too-close contacts [i](#)

In the following table, the Non-H and H(model) columns list the number of non-hydrogen atoms and hydrogen atoms in the chain respectively. The H(added) column lists the number of hydrogen atoms added and optimized by MolProbity. The Clashes column lists the number of clashes within the asymmetric unit, whereas Symm-Clashes lists symmetry related clashes.

Mol	Chain	Non-H	H(model)	H(added)	Clashes	Symm-Clashes
1	A	2806	0	2841	18	0

Continued on next page...

Continued from previous page...

Mol	Chain	Non-H	H(model)	H(added)	Clashes	Symm-Clashes
1	B	2744	0	2784	15	0
2	A	28	0	13	3	0
2	B	28	0	14	3	0
3	B	1	0	0	0	0
4	A	55	0	0	0	0
4	B	15	0	0	1	0
All	All	5677	0	5652	37	0

The all-atom clashscore is defined as the number of clashes found per 1000 atoms (including hydrogen atoms). The all-atom clashscore for this structure is 3.

All (37) close contacts within the same asymmetric unit are listed below, sorted by their clash magnitude.

Atom-1	Atom-2	Interatomic distance (Å)	Clash overlap (Å)
2:B:2011:2YQ:F2	2:B:2011:2YQ:C14	1.66	1.34
2:A:2011:2YQ:C14	2:A:2011:2YQ:F2	1.89	1.10
1:B:726:ASP:HB2	4:B:3002:HOH:O	1.88	0.72
1:A:841:ARG:HD2	1:A:873:LEU:O	1.92	0.70
2:B:2011:2YQ:H12	2:B:2011:2YQ:C12	2.28	0.64
1:B:770:ASP:HB2	1:B:868:ASN:OD1	2.01	0.61
1:B:754:ASN:OD1	1:B:756:ASP:N	2.36	0.59
1:A:724:SER:HB2	1:A:729:ILE:HD13	1.84	0.58
1:B:748:LYS:HD3	1:B:749:PRO:HD2	1.89	0.55
1:B:961:ASN:ND2	1:B:970:PRO:HA	2.23	0.53
1:A:961:ASN:ND2	1:A:970:PRO:HA	2.25	0.51
1:A:862:HIS:HE1	2:A:2011:2YQ:C18	2.23	0.51
1:B:759:GLN:O	1:B:763:GLU:HG2	2.11	0.51
1:A:896:TYR:H	2:A:2011:2YQ:C18	2.25	0.50
1:A:928:ASN:HB2	1:A:944:GLY:O	2.13	0.49
1:B:841:ARG:NE	1:B:873:LEU:O	2.46	0.49
1:B:770:ASP:HB3	1:B:868:ASN:HA	1.95	0.48
1:A:845:CYS:O	1:A:849:LYS:HG2	2.14	0.47
1:A:710:TYR:OH	1:A:766:ASP:OD1	2.26	0.47
1:B:667:LYS:HB3	1:B:668:PRO:HD3	1.96	0.46
1:B:703:LYS:HG3	1:B:772:GLU:OE1	2.15	0.46
1:B:696:MET:CE	1:B:705:GLN:OE1	2.65	0.44
1:B:918:LEU:HD22	1:B:1002:LEU:HD21	2.00	0.43
1:A:832:GLU:HB3	1:A:1006:LYS:HB3	1.99	0.43
1:A:809:GLU:O	1:A:813:ILE:HG12	2.18	0.43
1:A:980:ASN:N	1:A:980:ASN:OD1	2.40	0.42
1:A:674:LYS:HE2	1:A:790:ILE:HD11	2.01	0.42

Continued on next page...

Continued from previous page...

Atom-1	Atom-2	Interatomic distance (Å)	Clash overlap (Å)
1:A:821:THR:HB	1:A:900:MET:HA	2.00	0.42
1:B:809:GLU:O	1:B:813:ILE:HG12	2.20	0.42
1:A:675:MET:SD	1:A:916:ILE:HD11	2.59	0.41
1:B:674:LYS:HE2	1:B:790:ILE:HD11	2.03	0.41
1:A:875:GLN:OE1	1:A:878:ARG:NH1	2.52	0.41
1:A:918:LEU:HD22	1:A:1002:LEU:HD21	2.02	0.41
1:A:889:TYR:O	1:A:937:HIS:CE1	2.73	0.41
1:A:667:LYS:HB3	1:A:668:PRO:HD3	2.02	0.41
2:B:2011:2YQ:H12	2:B:2011:2YQ:C13	2.51	0.41
1:B:747:LYS:O	1:B:748:LYS:C	2.59	0.41

There are no symmetry-related clashes.

5.3 Torsion angles [i](#)

5.3.1 Protein backbone [i](#)

In the following table, the Percentiles column shows the percent Ramachandran outliers of the chain as a percentile score with respect to all X-ray entries followed by that with respect to entries of similar resolution.

The Analysed column shows the number of residues for which the backbone conformation was analysed, and the total number of residues.

Mol	Chain	Analysed	Favoured	Allowed	Outliers	Percentiles	
1	A	354/373 (95%)	339 (96%)	15 (4%)	0	100	100
1	B	347/373 (93%)	331 (95%)	16 (5%)	0	100	100
All	All	701/746 (94%)	670 (96%)	31 (4%)	0	100	100

There are no Ramachandran outliers to report.

5.3.2 Protein sidechains [i](#)

In the following table, the Percentiles column shows the percent sidechain outliers of the chain as a percentile score with respect to all X-ray entries followed by that with respect to entries of similar resolution.

The Analysed column shows the number of residues for which the sidechain conformation was analysed, and the total number of residues.

Mol	Chain	Analysed	Rotameric	Outliers	Percentiles	
1	A	313/328 (95%)	305 (97%)	8 (3%)	54	66
1	B	306/328 (93%)	295 (96%)	11 (4%)	42	52
All	All	619/656 (94%)	600 (97%)	19 (3%)	47	59

All (19) residues with a non-rotameric sidechain are listed below:

Mol	Chain	Res	Type
1	A	656	LEU
1	A	731	ASP
1	A	817	TYR
1	A	827	ASN
1	A	838	LYS
1	A	845	CYS
1	A	936	SER
1	A	965	ASP
1	B	705	GLN
1	B	727	SER
1	B	748	LYS
1	B	817	TYR
1	B	827	ASN
1	B	840	GLU
1	B	845	CYS
1	B	902	SER
1	B	979	VAL
1	B	981	ASP
1	B	985	LEU

Some sidechains can be flipped to improve hydrogen bonding and reduce clashes. All (8) such sidechains are listed below:

Mol	Chain	Res	Type
1	A	717	GLN
1	A	734	ASN
1	A	827	ASN
1	A	906	ASN
1	A	961	ASN
1	B	793	ASN
1	B	827	ASN
1	B	961	ASN

5.3.3 RNA [i](#)

There are no RNA molecules in this entry.

5.4 Non-standard residues in protein, DNA, RNA chains [i](#)

There are no non-standard protein/DNA/RNA residues in this entry.

5.5 Carbohydrates [i](#)

There are no carbohydrates in this entry.

5.6 Ligand geometry [i](#)

Of 3 ligands modelled in this entry, 1 is monoatomic - leaving 2 for Mogul analysis.

In the following table, the Counts columns list the number of bonds (or angles) for which Mogul statistics could be retrieved, the number of bonds (or angles) that are observed in the model and the number of bonds (or angles) that are defined in the chemical component dictionary. The Link column lists molecule types, if any, to which the group is linked. The Z score for a bond length (or angle) is the number of standard deviations the observed value is removed from the expected value. A bond length (or angle) with $|Z| > 2$ is considered an outlier worth inspection. RMSZ is the root-mean-square of all Z scores of the bond lengths (or angles).

Mol	Type	Chain	Res	Link	Bond lengths			Bond angles		
					Counts	RMSZ	$\# Z > 2$	Counts	RMSZ	$\# Z > 2$
2	2YQ	A	2011	-	28,32,32	5.33	10 (35%)	29,48,48	3.12	14 (48%)
2	2YQ	B	2011	-	28,32,32	3.18	5 (17%)	29,48,48	2.51	11 (37%)

In the following table, the Chirals column lists the number of chiral outliers, the number of chiral centers analysed, the number of these observed in the model and the number defined in the chemical component dictionary. Similar counts are reported in the Torsion and Rings columns. '-' means no outliers of that kind were identified.

Mol	Type	Chain	Res	Link	Chirals	Torsions	Rings
2	2YQ	A	2011	-	-	0/4/20/20	0/4/5/5
2	2YQ	B	2011	-	-	0/4/20/20	0/4/5/5

All (15) bond length outliers are listed below:

Mol	Chain	Res	Type	Atoms	Z	Observed(Å)	Ideal(Å)
2	A	2011	2YQ	C11-C6	-12.62	1.34	1.51

Continued on next page...

Continued from previous page...

Mol	Chain	Res	Type	Atoms	Z	Observed(Å)	Ideal(Å)
2	B	2011	2YQ	C11-C6	-7.21	1.42	1.51
2	A	2011	2YQ	C7-N3	-3.69	1.36	1.40
2	A	2011	2YQ	C7-C2	-2.76	1.38	1.42
2	B	2011	2YQ	C19-N4	2.11	1.49	1.47
2	B	2011	2YQ	C3-N1	2.23	1.36	1.33
2	A	2011	2YQ	C4-N2	2.53	1.42	1.32
2	A	2011	2YQ	C17-N6	2.67	1.39	1.34
2	A	2011	2YQ	N2-N1	2.93	1.42	1.34
2	A	2011	2YQ	C3-N1	3.20	1.37	1.33
2	A	2011	2YQ	C17-C5	4.60	1.57	1.50
2	A	2011	2YQ	F1-C9	5.02	1.48	1.36
2	B	2011	2YQ	C6-N3	5.36	1.51	1.46
2	B	2011	2YQ	F2-C14	12.57	1.66	1.36
2	A	2011	2YQ	F2-C14	22.39	1.89	1.36

All (25) bond angle outliers are listed below:

Mol	Chain	Res	Type	Atoms	Z	Observed(°)	Ideal(°)
2	A	2011	2YQ	C5-C3-N1	-6.07	111.77	118.18
2	A	2011	2YQ	C12-C11-C6	-4.28	113.78	120.79
2	A	2011	2YQ	C3-N1-N2	-4.11	116.83	119.86
2	B	2011	2YQ	C15-C14-C13	-3.76	117.38	122.87
2	A	2011	2YQ	C10-C1-C4	-2.94	118.88	122.39
2	A	2011	2YQ	C15-C16-C11	-2.86	118.24	121.20
2	A	2011	2YQ	C19-N4-N5	-2.53	113.68	118.04
2	B	2011	2YQ	C10-C1-C4	-2.35	119.58	122.39
2	A	2011	2YQ	C15-C14-C13	-2.07	119.85	122.87
2	A	2011	2YQ	C8-C7-C2	2.06	122.28	119.34
2	A	2011	2YQ	C16-C15-C14	2.26	120.75	118.34
2	A	2011	2YQ	C16-C11-C12	2.29	121.19	118.30
2	A	2011	2YQ	F2-C14-C15	2.50	122.52	118.53
2	B	2011	2YQ	C16-C15-C14	2.71	121.23	118.34
2	B	2011	2YQ	F2-C14-C15	2.78	122.97	118.53
2	B	2011	2YQ	C3-C5-C6	3.04	115.08	109.86
2	B	2011	2YQ	C12-C13-C14	3.11	121.66	118.34
2	B	2011	2YQ	C5-C17-N4	3.31	128.11	123.12
2	B	2011	2YQ	F1-C9-C8	3.41	122.81	118.22
2	A	2011	2YQ	F1-C9-C8	4.59	124.40	118.22
2	B	2011	2YQ	C3-N1-N2	4.80	123.41	119.86
2	B	2011	2YQ	C2-C7-N3	4.82	120.11	117.49
2	A	2011	2YQ	C5-C17-N4	5.91	132.03	123.12
2	B	2011	2YQ	C11-C6-N3	6.56	120.43	110.88

Continued on next page...

Continued from previous page...

Mol	Chain	Res	Type	Atoms	Z	Observed(°)	Ideal(°)
2	A	2011	2YQ	C11-C6-N3	9.38	124.53	110.88

There are no chirality outliers.

There are no torsion outliers.

There are no ring outliers.

2 monomers are involved in 6 short contacts:

Mol	Chain	Res	Type	Clashes	Symm-Clashes
2	A	2011	2YQ	3	0
2	B	2011	2YQ	3	0

5.7 Other polymers

There are no such residues in this entry.

5.8 Polymer linkage issues

There are no chain breaks in this entry.

6 Fit of model and data

6.1 Protein, DNA and RNA chains

In the following table, the column labelled ‘#RSRZ> 2’ contains the number (and percentage) of RSRZ outliers, followed by percent RSRZ outliers for the chain as percentile scores relative to all X-ray entries and entries of similar resolution. The OWAB column contains the minimum, median, 95th percentile and maximum values of the occupancy-weighted average B-factor per residue. The column labelled ‘Q< 0.9’ lists the number of (and percentage) of residues with an average occupancy less than 0.9.

Mol	Chain	Analysed	<RSRZ>	#RSRZ>2	OWAB(Å ²)	Q<0.9
1	A	356/373 (95%)	0.34	30 (8%) 14 13	24, 47, 99, 164	0
1	B	349/373 (93%)	0.68	45 (12%) 5 4	31, 62, 125, 148	0
All	All	705/746 (94%)	0.51	75 (10%) 8 7	24, 54, 117, 164	0

All (75) RSRZ outliers are listed below:

Mol	Chain	Res	Type	RSRZ
1	B	826	HIS	10.0
1	A	825	THR	8.9
1	B	941	LEU	8.4
1	B	823	ALA	8.3
1	A	785	SER	8.0
1	A	781	GLY	7.8
1	B	721	SER	7.5
1	A	784	ASP	7.2
1	A	824	THR	7.1
1	A	826	HIS	6.7
1	B	980	ASN	6.6
1	B	939	SER	6.4
1	A	823	ALA	5.8
1	B	943	LYS	5.7
1	B	938	ILE	5.5
1	A	966	GLY	5.1
1	A	783	ASP	5.0
1	B	930	TYR	5.0
1	A	782	SER	5.0
1	B	825	THR	4.8
1	A	937	HIS	4.7
1	B	940	LYS	4.6
1	B	727	SER	4.3
1	B	944	GLY	4.3

Continued on next page...

Continued from previous page...

Mol	Chain	Res	Type	RSRZ
1	A	827	ASN	4.3
1	A	943	LYS	3.9
1	B	934	HIS	3.9
1	B	786	SER	3.8
1	B	750	PRO	3.8
1	B	785	SER	3.7
1	B	759	GLN	3.5
1	B	982	THR	3.4
1	B	937	HIS	3.4
1	A	959	SER	3.2
1	A	855	HIS	3.1
1	B	732	LEU	3.1
1	B	722	GLN	3.0
1	B	946	HIS	3.0
1	B	784	ASP	2.9
1	B	718	GLN	2.9
1	B	729	ILE	2.9
1	B	783	ASP	2.9
1	A	965	ASP	2.9
1	B	751	LEU	2.8
1	B	979	VAL	2.7
1	B	945	LYS	2.6
1	A	822	HIS	2.6
1	A	779	ARG	2.6
1	B	855	HIS	2.5
1	A	944	GLY	2.5
1	A	787	LYS	2.5
1	A	661	MET	2.4
1	B	888	GLY	2.4
1	B	824	THR	2.4
1	A	786	SER	2.4
1	B	983	SER	2.4
1	A	976	SER	2.4
1	B	664	LYS	2.3
1	B	787	LYS	2.3
1	B	965	ASP	2.3
1	A	853	GLN	2.2
1	A	851	PHE	2.2
1	B	780	GLY	2.2
1	A	938	ILE	2.1
1	A	975	ILE	2.1
1	B	730	LEU	2.1

Continued on next page...

Continued from previous page...

Mol	Chain	Res	Type	RSRZ
1	B	964	LEU	2.1
1	B	981	ASP	2.1
1	B	853	GLN	2.1
1	A	828	ALA	2.1
1	A	854	LEU	2.1
1	B	827	ASN	2.1
1	B	850	PRO	2.0
1	B	851	PHE	2.0
1	A	1010	LYS	2.0

6.2 Non-standard residues in protein, DNA, RNA chains [i](#)

There are no non-standard protein/DNA/RNA residues in this entry.

6.3 Carbohydrates [i](#)

There are no carbohydrates in this entry.

6.4 Ligands [i](#)

In the following table, the Atoms column lists the number of modelled atoms in the group and the number defined in the chemical component dictionary. LLDF column lists the quality of electron density of the group with respect to its neighbouring residues in protein, DNA or RNA chains. The B-factors column lists the minimum, median, 95th percentile and maximum values of B factors of atoms in the group. The column labelled 'Q< 0.9' lists the number of atoms with occupancy less than 0.9.

Mol	Type	Chain	Res	Atoms	RSCC	RSR	LLDF	B-factors(Å ²)	Q<0.9
3	NA	B	2012	1/1	0.95	0.24	7.04	46,46,46,46	0
2	2YQ	A	2011	28/28	0.78	0.18	2.32	33,44,65,69	0
2	2YQ	B	2011	28/28	0.72	0.23	0.90	53,77,93,94	0

6.5 Other polymers [i](#)

There are no such residues in this entry.