



# Full wwPDB X-ray Structure Validation Report ⓘ

Feb 1, 2016 – 01:42 PM GMT

PDB ID : 3UO0  
Title : phosphorylated Bacillus cereus phosphopentomutase soaked with glucose 1,6-bisphosphate  
Authors : Iverson, T.M.; Birmingham, W.R.; Panosian, T.D.; Nannemann, D.P.; Bachmann, B.O.  
Deposited on : 2011-11-16  
Resolution : 2.30 Å(reported)

This is a Full wwPDB X-ray Structure Validation Report for a publicly released PDB entry.  
We welcome your comments at [validation@mail.wwpdb.org](mailto:validation@mail.wwpdb.org)  
A user guide is available at  
<http://wwpdb.org/validation/2016/XrayValidationReportHelp>  
with specific help available everywhere you see the ⓘ symbol.

---

The following versions of software and data (see [references ⓘ](#)) were used in the production of this report:

MolProbity : 4.02b-467  
Mogul : 1.7 (RC4), CSD as536be (2015)  
Xtriage (Phenix) : 1.9-1692  
EDS : rb-20026688  
Percentile statistics : 20151230.v01 (using entries in the PDB archive December 30th 2015)  
Refmac : 5.8.0135  
CCP4 : 6.5.0  
Ideal geometry (proteins) : Engh & Huber (2001)  
Ideal geometry (DNA, RNA) : Parkinson et al. (1996)  
Validation Pipeline (wwPDB-VP) : trunk26865

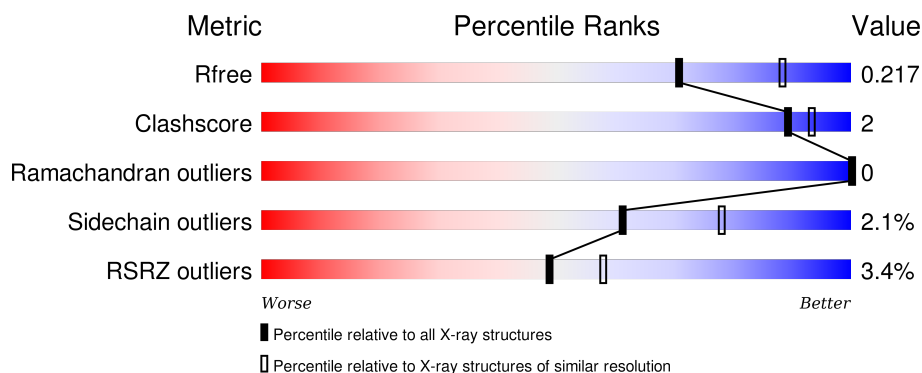
# 1 Overall quality at a glance

The following experimental techniques were used to determine the structure:

## *X-RAY DIFFRACTION*

The reported resolution of this entry is 2.30 Å.

Percentile scores (ranging between 0-100) for global validation metrics of the entry are shown in the following graphic. The table shows the number of entries on which the scores are based.



Metric	Whole archive (#Entries)	Similar resolution (#Entries, resolution range(Å))
$R_{free}$	91344	3852 (2.30-2.30)
Clashscore	102246	4452 (2.30-2.30)
Ramachandran outliers	100387	4410 (2.30-2.30)
Sidechain outliers	100360	4409 (2.30-2.30)
RSRZ outliers	91569	3857 (2.30-2.30)

The table below summarises the geometric issues observed across the polymeric chains and their fit to the electron density. The red, orange, yellow and green segments on the lower bar indicate the fraction of residues that contain outliers for  $\geq 3$ , 2, 1 and 0 types of geometric quality criteria. A grey segment represents the fraction of residues that are not modelled. The numeric value for each fraction is indicated below the corresponding segment, with a dot representing fractions  $\leq 5\%$ . The upper red bar (where present) indicates the fraction of residues that have poor fit to the electron density. The numeric value is given above the bar.

Mol	Chain	Length	Quality of chain
1	A	399	<div> <div>3%</div> <div>91%</div> <div>7%</div> <div>.</div> </div>
1	B	399	<div> <div>2%</div> <div>88%</div> <div>10%</div> <div>.</div> </div>
1	C	399	<div> <div>6%</div> <div>90%</div> <div>7%</div> <div>..</div> </div>

The following table lists non-polymeric compounds, carbohydrate monomers and non-standard residues in protein, DNA, RNA chains that are outliers for geometric or electron-density-fit criteria:

Mol	Type	Chain	Res	Chirality	Geometry	Clashes	Electron density
3	G16	A	398	-	-	-	X
4	TRS	A	399	-	-	-	X

## 2 Entry composition

There are 5 unique types of molecules in this entry. The entry contains 9683 atoms, of which 0 are hydrogens and 0 are deuteriums.

In the tables below, the ZeroOcc column contains the number of atoms modelled with zero occupancy, the AltConf column contains the number of residues with at least one atom in alternate conformation and the Trace column contains the number of residues modelled with at most 2 atoms.

- Molecule 1 is a protein called Phosphopentomutase.

Mol	Chain	Residues	Atoms						ZeroOcc	AltConf	Trace
1	A	391	Total	C	N	O	P	S	8	0	0
			3068	1939	505	606	1	17			
1	B	390	Total	C	N	O	P	S	13	0	0
			3060	1935	503	604	1	17			
1	C	390	Total	C	N	O	P	S	29	0	0
			3060	1935	503	604	1	17			

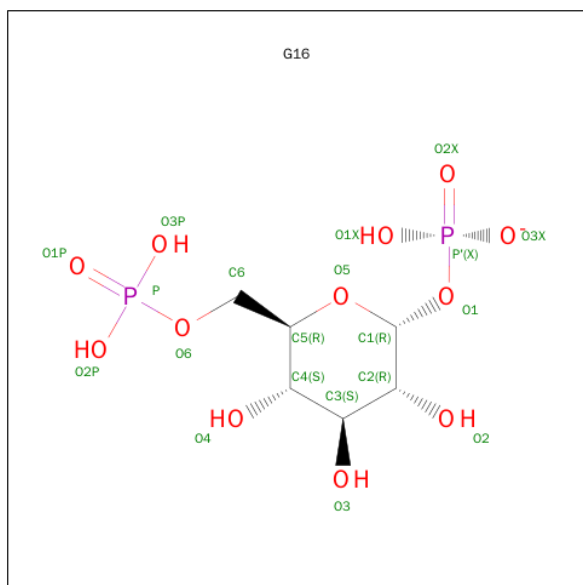
There are 18 discrepancies between the modelled and reference sequences:

Chain	Residue	Modelled	Actual	Comment	Reference
A	-4	GLY	-	EXPRESSION TAG	UNP Q818Z9
A	-3	SER	-	EXPRESSION TAG	UNP Q818Z9
A	-2	HIS	-	EXPRESSION TAG	UNP Q818Z9
A	-1	MET	-	EXPRESSION TAG	UNP Q818Z9
A	0	ALA	-	EXPRESSION TAG	UNP Q818Z9
A	1	SER	-	EXPRESSION TAG	UNP Q818Z9
B	-4	GLY	-	EXPRESSION TAG	UNP Q818Z9
B	-3	SER	-	EXPRESSION TAG	UNP Q818Z9
B	-2	HIS	-	EXPRESSION TAG	UNP Q818Z9
B	-1	MET	-	EXPRESSION TAG	UNP Q818Z9
B	0	ALA	-	EXPRESSION TAG	UNP Q818Z9
B	1	SER	-	EXPRESSION TAG	UNP Q818Z9
C	-4	GLY	-	EXPRESSION TAG	UNP Q818Z9
C	-3	SER	-	EXPRESSION TAG	UNP Q818Z9
C	-2	HIS	-	EXPRESSION TAG	UNP Q818Z9
C	-1	MET	-	EXPRESSION TAG	UNP Q818Z9
C	0	ALA	-	EXPRESSION TAG	UNP Q818Z9
C	1	SER	-	EXPRESSION TAG	UNP Q818Z9

- Molecule 2 is MANGANESE (II) ION (three-letter code: MN) (formula: Mn).

Mol	Chain	Residues	Atoms		ZeroOcc	AltConf
2	B	2	Total	Mn	0	0
			2	2		
2	A	3	Total	Mn	0	0
			3	3		
2	C	3	Total	Mn	0	0
			3	3		

- Molecule 3 is SUGAR (ALPHA-D-GLUCOSE 1,6-BISPHOSPHATE) (three-letter code: G16) (formula:  $C_6H_{13}O_{12}P_2$ ).



Mol	Chain	Residues	Atoms				ZeroOcc	AltConf
3	A	1	Total	C	O	P	0	0
			20	6	12	2		

- Molecule 4 is 2-AMINO-2-HYDROXYMETHYL-PROPANE-1,3-DIOL (three-letter code: TRS) (formula:  $C_4H_{12}NO_3$ ).



Mol	Chain	Residues	Atoms				ZeroOcc	AltConf
4	A	1	Total	C	N	O	0	0
			8	4	1	3		

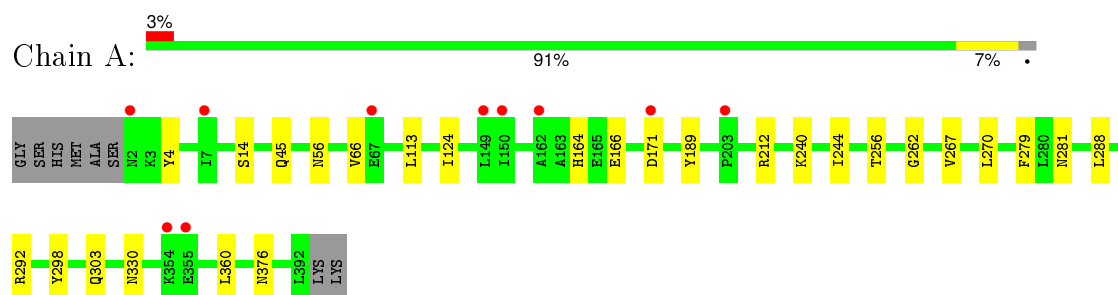
- Molecule 5 is water.

Mol	Chain	Residues	Atoms		ZeroOcc	AltConf
5	A	179	Total	O	0	0
			179	179		
5	B	196	Total	O	0	0
			196	196		
5	C	84	Total	O	0	0
			84	84		

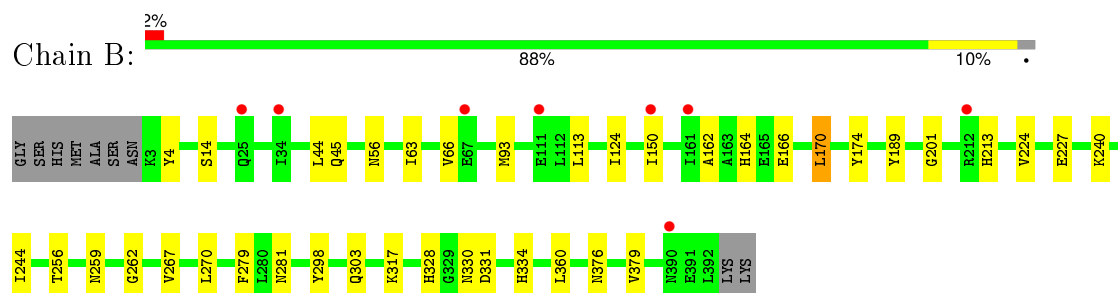
### 3 Residue-property plots [i](#)

These plots are drawn for all protein, RNA and DNA chains in the entry. The first graphic for a chain summarises the proportions of errors displayed in the second graphic. The second graphic shows the sequence view annotated by issues in geometry and electron density. Residues are color-coded according to the number of geometric quality criteria for which they contain at least one outlier: green = 0, yellow = 1, orange = 2 and red = 3 or more. A red dot above a residue indicates a poor fit to the electron density ( $RSRZ > 2$ ). Stretches of 2 or more consecutive residues without any outlier are shown as a green connector. Residues present in the sample, but not in the model, are shown in grey.

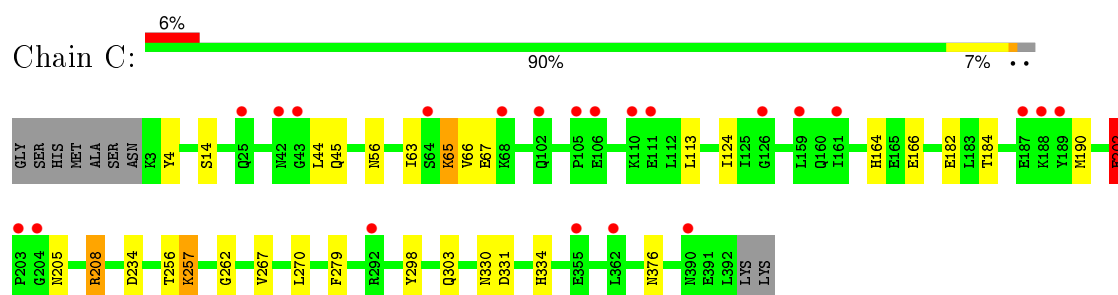
#### • Molecule 1: Phosphopentomutase



#### • Molecule 1: Phosphopentomutase



#### • Molecule 1: Phosphopentomutase



## 4 Data and refinement statistics

Property	Value	Source
Space group	P 1 21 1	Depositor
Cell constants a, b, c, $\alpha$ , $\beta$ , $\gamma$	91.82Å 77.08Å 108.33Å 90.00° 108.94° 90.00°	Depositor
Resolution (Å)	20.00 – 2.30 19.97 – 2.30	Depositor EDS
% Data completeness (in resolution range)	99.7 (20.00-2.30) 99.7 (19.97-2.30)	Depositor EDS
$R_{merge}$	(Not available)	Depositor
$R_{sym}$	(Not available)	Depositor
$\langle I/\sigma(I) \rangle$ <sup>1</sup>	2.97 (at 2.30Å)	Xtriage
Refinement program	REFMAC 5.5.0109	Depositor
R, $R_{free}$	0.182 , 0.216 0.184 , 0.217	Depositor DCC
$R_{free}$ test set	7460 reflections (13.31%)	DCC
Wilson B-factor (Å <sup>2</sup> )	32.2	Xtriage
Anisotropy	0.003	Xtriage
Bulk solvent $k_{sol}$ (e/Å <sup>3</sup> ), $B_{sol}$ (Å <sup>2</sup> )	0.39 , 40.0	EDS
Estimated twinning fraction	No twinning to report.	Xtriage
L-test for twinning <sup>2</sup>	$\langle  L  \rangle = 0.50$ , $\langle L^2 \rangle = 0.33$	Xtriage
Outliers	0 of 63499 reflections	Xtriage
$F_o, F_c$ correlation	0.95	EDS
Total number of atoms	9683	wwPDB-VP
Average B, all atoms (Å <sup>2</sup> )	36.0	wwPDB-VP

Xtriage's analysis on translational NCS is as follows: *The largest off-origin peak in the Patterson function is 4.09% of the height of the origin peak. No significant pseudotranslation is detected.*

<sup>1</sup>Intensities estimated from amplitudes.

<sup>2</sup>Theoretical values of  $\langle |L| \rangle$ ,  $\langle L^2 \rangle$  for acentric reflections are 0.5, 0.375 respectively for untwinned datasets, and 0.333, 0.2 for perfectly twinned datasets.



## 5 Model quality [i](#)

### 5.1 Standard geometry [i](#)

Bond lengths and bond angles in the following residue types are not validated in this section: TPO, G16, TRS, MN

The Z score for a bond length (or angle) is the number of standard deviations the observed value is removed from the expected value. A bond length (or angle) with  $|Z| > 5$  is considered an outlier worth inspection. RMSZ is the root-mean-square of all Z scores of the bond lengths (or angles).

Mol	Chain	Bond lengths		Bond angles	
		RMSZ	$\# Z  > 5$	RMSZ	$\# Z  > 5$
1	A	0.34	0/3117	0.50	0/4208
1	B	0.34	0/3109	0.50	0/4197
1	C	1.03	6/3109 (0.2%)	0.63	7/4197 (0.2%)
All	All	0.66	6/9335 (0.1%)	0.54	7/12602 (0.1%)

All (6) bond length outliers are listed below:

Mol	Chain	Res	Type	Atoms	Z	Observed(Å)	Ideal(Å)
1	C	257	LYS	CD-CE	30.43	2.27	1.51
1	C	202	GLU	CG-CD	27.52	1.93	1.51
1	C	67	GLU	CB-CG	26.09	2.01	1.52
1	C	65	LYS	CD-CE	-20.03	1.01	1.51
1	C	182	GLU	CG-CD	11.65	1.69	1.51
1	C	208	ARG	CB-CG	-8.44	1.29	1.52

All (7) bond angle outliers are listed below:

Mol	Chain	Res	Type	Atoms	Z	Observed(°)	Ideal(°)
1	C	65	LYS	CG-CD-CE	16.48	161.36	111.90
1	C	257	LYS	CG-CD-CE	-10.74	79.68	111.90
1	C	202	GLU	CB-CG-CD	-9.75	87.87	114.20
1	C	67	GLU	CA-CB-CG	-9.33	92.87	113.40
1	C	65	LYS	CD-CE-NZ	-5.46	99.13	111.70
1	C	257	LYS	CD-CE-NZ	5.04	123.29	111.70
1	C	208	ARG	CA-CB-CG	5.02	124.44	113.40

There are no chirality outliers.

There are no planarity outliers.

## 5.2 Too-close contacts ⓘ

In the following table, the Non-H and H(model) columns list the number of non-hydrogen atoms and hydrogen atoms in the chain respectively. The H(added) column lists the number of hydrogen atoms added and optimized by MolProbity. The Clashes column lists the number of clashes within the asymmetric unit, whereas Symm-Clashes lists symmetry related clashes.

Mol	Chain	Non-H	H(model)	H(added)	Clashes	Symm-Clashes
1	A	3068	0	3007	11	0
1	B	3060	0	3001	19	0
1	C	3060	0	3001	14	0
2	A	3	0	0	0	0
2	B	2	0	0	0	0
2	C	3	0	0	0	0
3	A	20	0	10	0	0
4	A	8	0	12	0	0
5	A	179	0	0	0	0
5	B	196	0	0	0	0
5	C	84	0	0	0	0
All	All	9683	0	9031	43	0

The all-atom clashscore is defined as the number of clashes found per 1000 atoms (including hydrogen atoms). The all-atom clashscore for this structure is 2.

All (43) close contacts within the same asymmetric unit are listed below, sorted by their clash magnitude.

Atom-1	Atom-2	Interatomic distance (Å)	Clash overlap (Å)
1:B:4:TYR:H	1:B:376:ASN:HD21	1.34	0.73
1:A:164:HIS:HD2	1:A:166:GLU:H	1.44	0.65
1:A:4:TYR:H	1:A:376:ASN:HD21	1.45	0.62
1:C:4:TYR:H	1:C:376:ASN:HD21	1.47	0.61
1:C:164:HIS:HD2	1:C:166:GLU:H	1.50	0.59
1:A:56:ASN:HD21	1:A:66:VAL:H	1.51	0.59
1:B:240:LYS:HE3	1:B:244:ILE:HD11	1.84	0.59
1:B:164:HIS:HD2	1:B:166:GLU:H	1.51	0.57
1:C:331:ASP:HB3	1:C:334:HIS:HB2	1.86	0.57
1:B:56:ASN:HD21	1:B:66:VAL:H	1.51	0.56
1:B:93:MET:O	1:B:224:VAL:HG23	2.05	0.56
1:A:14:SER:HB2	1:A:330:ASN:HB2	1.87	0.55
1:A:45:GLN:H	1:A:303:GLN:HE21	1.54	0.55
1:B:113:LEU:HD22	1:B:124:ILE:HG21	1.87	0.55
1:B:45:GLN:H	1:B:303:GLN:HE21	1.54	0.55
1:B:227:GLU:HG3	1:B:379:VAL:HB	1.89	0.54

*Continued on next page...*

*Continued from previous page...*

Atom-1	Atom-2	Interatomic distance (Å)	Clash overlap (Å)
1:C:256:THR:HG21	1:C:262:GLY:HA2	1.92	0.52
1:A:240:LYS:HE3	1:A:244:ILE:HD11	1.92	0.51
1:A:256:THR:HG21	1:A:262:GLY:HA2	1.92	0.51
1:B:331:ASP:HB3	1:B:334:HIS:HB2	1.93	0.51
1:C:45:GLN:H	1:C:303:GLN:HE21	1.59	0.51
1:C:113:LEU:HD22	1:C:124:ILE:HG21	1.92	0.51
1:C:14:SER:HB2	1:C:330:ASN:HB2	1.93	0.50
1:C:267:VAL:HA	1:C:270:LEU:HD12	1.95	0.49
1:A:267:VAL:HA	1:A:270:LEU:HD12	1.95	0.48
1:C:56:ASN:HD21	1:C:66:VAL:H	1.62	0.48
1:A:113:LEU:HD22	1:A:124:ILE:HG21	1.96	0.47
1:C:184:THR:O	1:C:190:MET:HA	2.14	0.47
1:B:14:SER:HB2	1:B:330:ASN:HB2	1.98	0.44
1:C:202:GLU:HG2	1:C:205:ASN:HB3	2.00	0.44
1:B:256:THR:HG21	1:B:262:GLY:HA2	2.00	0.43
1:A:4:TYR:N	1:A:376:ASN:HD21	2.15	0.43
1:A:288:LEU:O	1:A:292:ARG:HD2	2.20	0.42
1:B:150:ILE:HB	1:B:162:ALA:HB3	2.01	0.42
1:B:164:HIS:HE1	1:B:201:GLY:O	2.02	0.42
1:B:164:HIS:CD2	1:B:166:GLU:H	2.33	0.41
1:C:14:SER:HB2	1:C:330:ASN:CB	2.50	0.41
1:B:44:LEU:HD23	1:B:63:ILE:HD11	2.01	0.41
1:C:44:LEU:HD23	1:C:63:ILE:HD11	2.02	0.41
1:B:14:SER:HA	1:B:328:HIS:O	2.22	0.40
1:B:170:LEU:HD22	1:B:174:TYR:CE2	2.57	0.40
1:B:213:HIS:HD2	1:C:234:ASP:OD1	2.04	0.40
1:B:267:VAL:HA	1:B:270:LEU:HD12	2.02	0.40

There are no symmetry-related clashes.

## 5.3 Torsion angles [i](#)

### 5.3.1 Protein backbone [i](#)

In the following table, the Percentiles column shows the percent Ramachandran outliers of the chain as a percentile score with respect to all X-ray entries followed by that with respect to entries of similar resolution.

The Analysed column shows the number of residues for which the backbone conformation was analysed, and the total number of residues.

Mol	Chain	Analysed	Favoured	Allowed	Outliers	Percentiles	
1	A	388/399 (97%)	372 (96%)	16 (4%)	0	100	100
1	B	387/399 (97%)	374 (97%)	13 (3%)	0	100	100
1	C	387/399 (97%)	371 (96%)	16 (4%)	0	100	100
All	All	1162/1197 (97%)	1117 (96%)	45 (4%)	0	100	100

There are no Ramachandran outliers to report.

### 5.3.2 Protein sidechains ⓘ

In the following table, the Percentiles column shows the percent sidechain outliers of the chain as a percentile score with respect to all X-ray entries followed by that with respect to entries of similar resolution.

The Analysed column shows the number of residues for which the sidechain conformation was analysed, and the total number of residues.

Mol	Chain	Analysed	Rotameric	Outliers	Percentiles	
1	A	332/338 (98%)	325 (98%)	7 (2%)	61	78
1	B	331/338 (98%)	323 (98%)	8 (2%)	57	74
1	C	331/338 (98%)	325 (98%)	6 (2%)	66	82
All	All	994/1014 (98%)	973 (98%)	21 (2%)	61	78

All (21) residues with a non-rotameric sidechain are listed below:

Mol	Chain	Res	Type
1	A	171	ASP
1	A	189	TYR
1	A	212	ARG
1	A	279	PHE
1	A	281	ASN
1	A	298	TYR
1	A	360	LEU
1	B	170	LEU
1	B	189	TYR
1	B	259	ASN
1	B	279	PHE
1	B	281	ASN
1	B	298	TYR
1	B	317	LYS
1	B	360	LEU

*Continued on next page...*

*Continued from previous page...*

Mol	Chain	Res	Type
1	C	65	LYS
1	C	202	GLU
1	C	208	ARG
1	C	257	LYS
1	C	279	PHE
1	C	298	TYR

Some sidechains can be flipped to improve hydrogen bonding and reduce clashes. All (32) such sidechains are listed below:

Mol	Chain	Res	Type
1	A	25	GLN
1	A	48	ASN
1	A	56	ASN
1	A	77	GLN
1	A	89	HIS
1	A	164	HIS
1	A	205	ASN
1	A	259	ASN
1	A	281	ASN
1	A	303	GLN
1	A	358	GLN
1	A	376	ASN
1	A	390	ASN
1	B	56	ASN
1	B	77	GLN
1	B	89	HIS
1	B	164	HIS
1	B	211	ASN
1	B	213	HIS
1	B	259	ASN
1	B	281	ASN
1	B	303	GLN
1	B	376	ASN
1	C	56	ASN
1	C	77	GLN
1	C	89	HIS
1	C	164	HIS
1	C	213	HIS
1	C	259	ASN
1	C	281	ASN
1	C	303	GLN
1	C	376	ASN

### 5.3.3 RNA ⓘ

There are no RNA molecules in this entry.

## 5.4 Non-standard residues in protein, DNA, RNA chains ⓘ

3 non-standard protein/DNA/RNA residues are modelled in this entry.

In the following table, the Counts columns list the number of bonds (or angles) for which Mogul statistics could be retrieved, the number of bonds (or angles) that are observed in the model and the number of bonds (or angles) that are defined in the chemical component dictionary. The Link column lists molecule types, if any, to which the group is linked. The Z score for a bond length (or angle) is the number of standard deviations the observed value is removed from the expected value. A bond length (or angle) with  $|Z| > 2$  is considered an outlier worth inspection. RMSZ is the root-mean-square of all Z scores of the bond lengths (or angles).

Mol	Type	Chain	Res	Link	Bond lengths			Bond angles		
					Counts	RMSZ	# $ Z  > 2$	Counts	RMSZ	# $ Z  > 2$
1	TPO	A	85	1,2	8,10,11	0.68	0	7,14,16	1.54	2 (28%)
1	TPO	B	85	1,2	8,10,11	0.63	0	7,14,16	1.58	2 (28%)
1	TPO	C	85	1,2	8,10,11	0.66	0	7,14,16	1.45	0

In the following table, the Chirals column lists the number of chiral outliers, the number of chiral centers analysed, the number of these observed in the model and the number defined in the chemical component dictionary. Similar counts are reported in the Torsion and Rings columns. '-' means no outliers of that kind were identified.

Mol	Type	Chain	Res	Link	Chirals	Torsions	Rings
1	TPO	A	85	1,2	-	0/8/11/13	0/0/0/0
1	TPO	B	85	1,2	-	0/8/11/13	0/0/0/0
1	TPO	C	85	1,2	-	0/8/11/13	0/0/0/0

There are no bond length outliers.

All (4) bond angle outliers are listed below:

Mol	Chain	Res	Type	Atoms	Z	Observed(°)	Ideal(°)
1	B	85	TPO	O-C-CA	-2.02	120.12	125.44
1	A	85	TPO	O-C-CA	-2.00	120.15	125.44
1	A	85	TPO	C-CA-N	2.11	114.23	109.83
1	B	85	TPO	C-CA-N	2.18	114.39	109.83

There are no chirality outliers.

There are no torsion outliers.

There are no ring outliers.

No monomer is involved in short contacts.

## 5.5 Carbohydrates

There are no carbohydrates in this entry.

## 5.6 Ligand geometry

Of 10 ligands modelled in this entry, 8 are monoatomic - leaving 2 for Mogul analysis.

In the following table, the Counts columns list the number of bonds (or angles) for which Mogul statistics could be retrieved, the number of bonds (or angles) that are observed in the model and the number of bonds (or angles) that are defined in the chemical component dictionary. The Link column lists molecule types, if any, to which the group is linked. The Z score for a bond length (or angle) is the number of standard deviations the observed value is removed from the expected value. A bond length (or angle) with  $|Z| > 2$  is considered an outlier worth inspection. RMSZ is the root-mean-square of all Z scores of the bond lengths (or angles).

Mol	Type	Chain	Res	Link	Bond lengths			Bond angles		
					Counts	RMSZ	$\# Z  > 2$	Counts	RMSZ	$\# Z  > 2$
3	G16	A	398	-	19,20,20	1.39	3 (15%)	30,31,31	0.99	2 (6%)
4	TRS	A	399	-	7,7,7	0.90	1 (14%)	9,9,9	0.44	0

In the following table, the Chirals column lists the number of chiral outliers, the number of chiral centers analysed, the number of these observed in the model and the number defined in the chemical component dictionary. Similar counts are reported in the Torsion and Rings columns. '-' means no outliers of that kind were identified.

Mol	Type	Chain	Res	Link	Chirals	Torsions	Rings
3	G16	A	398	-	-	0/11/31/31	0/1/1/1
4	TRS	A	399	-	-	0/9/9/9	0/0/0/0

All (4) bond length outliers are listed below:

Mol	Chain	Res	Type	Atoms	Z	Observed(Å)	Ideal(Å)
4	A	399	TRS	C-N	-2.34	1.47	1.50
3	A	398	G16	P-O3P	2.02	1.62	1.54
3	A	398	G16	P-O1P	3.37	1.62	1.51
3	A	398	G16	P'-O3X	3.56	1.62	1.50

All (2) bond angle outliers are listed below:

Mol	Chain	Res	Type	Atoms	Z	Observed( $^{\circ}$ )	Ideal( $^{\circ}$ )
3	A	398	G16	O1-P'-O2X	2.21	113.79	108.71
3	A	398	G16	O2P-P-O6	2.34	113.30	106.56

There are no chirality outliers.

There are no torsion outliers.

There are no ring outliers.

No monomer is involved in short contacts.

## 5.7 Other polymers [i](#)

There are no such residues in this entry.

## 5.8 Polymer linkage issues [i](#)

There are no chain breaks in this entry.



## 6 Fit of model and data

### 6.1 Protein, DNA and RNA chains

In the following table, the column labelled ‘#RSRZ > 2’ contains the number (and percentage) of RSRZ outliers, followed by percent RSRZ outliers for the chain as percentile scores relative to all X-ray entries and entries of similar resolution. The OWAB column contains the minimum, median, 95<sup>th</sup> percentile and maximum values of the occupancy-weighted average B-factor per residue. The column labelled ‘Q < 0.9’ lists the number of (and percentage) of residues with an average occupancy less than 0.9.

Mol	Chain	Analysed	<RSRZ>	#RSRZ>2	OWAB(Å <sup>2</sup> )	Q<0.9
1	A	390/399 (97%)	-0.02	10 (2%) 59 68	23, 32, 47, 63	17 (4%)
1	B	389/399 (97%)	0.03	8 (2%) 67 74	22, 30, 44, 52	14 (3%)
1	C	389/399 (97%)	0.33	22 (5%) 27 36	26, 43, 69, 85	24 (6%)
All	All	1168/1197 (97%)	0.11	40 (3%) 49 58	22, 34, 59, 85	55 (4%)

All (40) RSRZ outliers are listed below:

Mol	Chain	Res	Type	RSRZ
1	C	188	LYS	4.2
1	C	68	LYS	4.1
1	C	110	LYS	4.0
1	C	43	GLY	3.8
1	C	204	GLY	3.7
1	C	390	ASN	3.6
1	C	42	ASN	3.3
1	C	187	GLU	3.1
1	C	203	PRO	3.1
1	B	390	ASN	3.1
1	A	150	ILE	2.9
1	B	67	GLU	2.9
1	C	106	GLU	2.9
1	A	2	ASN	2.8
1	B	161	ILE	2.8
1	C	161	ILE	2.8
1	C	189	TYR	2.7
1	C	105	PRO	2.6
1	A	355	GLU	2.5
1	C	64	SER	2.5
1	C	102	GLN	2.4
1	C	355	GLU	2.4
1	B	150	ILE	2.4

*Continued on next page...*

*Continued from previous page...*

Mol	Chain	Res	Type	RSRZ
1	A	171	ASP	2.4
1	A	149	LEU	2.4
1	C	292	ARG	2.3
1	C	25	GLN	2.3
1	C	159	LEU	2.3
1	A	67	GLU	2.3
1	B	34	ILE	2.3
1	C	126	GLY	2.2
1	B	111	GLU	2.2
1	A	162	ALA	2.2
1	B	212	ARG	2.1
1	C	111	GLU	2.1
1	C	362	LEU	2.1
1	A	7	ILE	2.1
1	B	25	GLN	2.1
1	A	354	LYS	2.0
1	A	203	PRO	2.0

## 6.2 Non-standard residues in protein, DNA, RNA chains [i](#)

In the following table, the Atoms column lists the number of modelled atoms in the group and the number defined in the chemical component dictionary. LLDF column lists the quality of electron density of the group with respect to its neighbouring residues in protein, DNA or RNA chains. The B-factors column lists the minimum, median, 95<sup>th</sup> percentile and maximum values of B factors of atoms in the group. The column labelled 'Q< 0.9' lists the number of atoms with occupancy less than 0.9.

Mol	Type	Chain	Res	Atoms	RSCC	RSR	LLDF	B-factors(Å <sup>2</sup> )	Q<0.9
1	TPO	B	85	11/12	0.97	0.10	-	26,27,30,31	0
1	TPO	C	85	11/12	0.94	0.14	-	34,35,37,38	0
1	TPO	A	85	11/12	0.98	0.09	-	28,29,33,33	0

## 6.3 Carbohydrates [i](#)

There are no carbohydrates in this entry.

## 6.4 Ligands [i](#)

In the following table, the Atoms column lists the number of modelled atoms in the group and the number defined in the chemical component dictionary. LLDF column lists the quality of electron density of the group with respect to its neighbouring residues in protein, DNA or RNA chains.

The B-factors column lists the minimum, median, 95<sup>th</sup> percentile and maximum values of B factors of atoms in the group. The column labelled 'Q< 0.9' lists the number of atoms with occupancy less than 0.9.

Mol	Type	Chain	Res	Atoms	RSCC	RSR	LLDF	B-factors(Å <sup>2</sup> )	Q<0.9
3	G16	A	398	20/20	0.76	0.31	4.11	54,55,55,55	20
4	TRS	A	399	8/8	0.81	0.27	3.52	56,56,56,56	0
2	MN	A	396	1/1	0.99	0.10	-0.91	24,24,24,24	0
2	MN	B	396	1/1	1.00	0.09	-1.12	26,26,26,26	0
2	MN	A	397	1/1	0.98	0.06	-1.78	30,30,30,30	1
2	MN	C	396	1/1	0.99	0.08	-1.91	33,33,33,33	0
2	MN	A	395	1/1	0.99	0.05	-2.07	25,25,25,25	0
2	MN	B	395	1/1	1.00	0.06	-2.46	25,25,25,25	0
2	MN	C	397	1/1	0.99	0.03	-3.47	50,50,50,50	0
2	MN	C	395	1/1	0.97	0.06	-4.34	39,39,39,39	0

## 6.5 Other polymers [i](#)

There are no such residues in this entry.