



# Full wwPDB X-ray Structure Validation Report ⓘ

Feb 1, 2016 – 09:03 PM GMT

PDB ID : 4UR1  
Title : Crystal structure of the PCE reductive dehalogenase from *S. multivorans* in complex with dibromoethene  
Authors : Bommer, M.; Kunze, C.; Fessler, J.; Schubert, T.; Diekert, G.; Dobbek, H.  
Deposited on : 2014-06-25  
Resolution : 1.65 Å(reported)

This is a Full wwPDB X-ray Structure Validation Report for a publicly released PDB entry.  
We welcome your comments at [validation@mail.wwpdb.org](mailto:validation@mail.wwpdb.org)  
A user guide is available at  
<http://wwpdb.org/validation/2016/XrayValidationReportHelp>  
with specific help available everywhere you see the ⓘ symbol.

---

The following versions of software and data (see [references ⓘ](#)) were used in the production of this report:

MolProbity : 4.02b-467  
Mogul : 1.7 (RC4), CSD as536be (2015)  
Xtriage (Phenix) : 1.9-1692  
EDS : rb-20026688  
Percentile statistics : 20151230.v01 (using entries in the PDB archive December 30th 2015)  
Refmac : 5.8.0135  
CCP4 : 6.5.0  
Ideal geometry (proteins) : Engh & Huber (2001)  
Ideal geometry (DNA, RNA) : Parkinson et al. (1996)  
Validation Pipeline (wwPDB-VP) : trunk26865

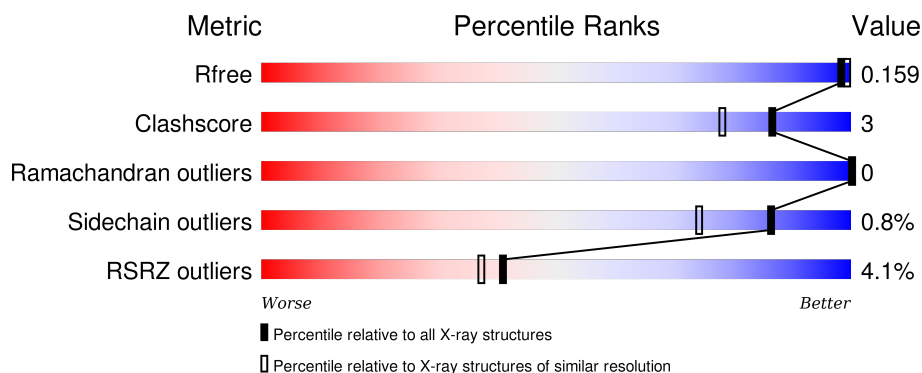
# 1 Overall quality at a glance ⓘ

The following experimental techniques were used to determine the structure:

## *X-RAY DIFFRACTION*

The reported resolution of this entry is 1.65 Å.

Percentile scores (ranging between 0-100) for global validation metrics of the entry are shown in the following graphic. The table shows the number of entries on which the scores are based.



Metric	Whole archive (#Entries)	Similar resolution (#Entries, resolution range(Å))
$R_{free}$	91344	1953 (1.66-1.62)
Clashscore	102246	2091 (1.66-1.62)
Ramachandran outliers	100387	2052 (1.66-1.62)
Sidechain outliers	100360	2052 (1.66-1.62)
RSRZ outliers	91569	1955 (1.66-1.62)

The table below summarises the geometric issues observed across the polymeric chains and their fit to the electron density. The red, orange, yellow and green segments on the lower bar indicate the fraction of residues that contain outliers for  $\geq 3$ , 2, 1 and 0 types of geometric quality criteria. A grey segment represents the fraction of residues that are not modelled. The numeric value for each fraction is indicated below the corresponding segment, with a dot representing fractions  $\leq 5\%$ . The upper red bar (where present) indicates the fraction of residues that have poor fit to the electron density. The numeric value is given above the bar.

Mol	Chain	Length	Quality of chain
1	A	464	<div> <div>3%</div> <div>91%</div> <div>5%</div> <div>.</div> </div>
1	B	464	<div> <div>5%</div> <div>91%</div> <div>6%</div> <div>.</div> </div>

The following table lists non-polymeric compounds, carbohydrate monomers and non-standard residues in protein, DNA, RNA chains that are outliers for geometric or electron-density-fit criteria:

Mol	Type	Chain	Res	Chirality	Geometry	Clashes	Electron density
3	BVQ	A	503	X	-	-	-
3	BVQ	B	503	X	-	-	-
4	CB0	A	505	-	-	-	X
4	CB0	B	505	-	-	-	X
5	BEN	A	511	-	-	-	X
5	BEN	A	512	-	-	-	X
5	BEN	B	511	-	-	-	X
6	GOL	A	513	-	-	-	X
6	GOL	A	516	-	-	-	X
6	GOL	A	517	-	-	-	X
6	GOL	A	519	-	-	-	X
6	GOL	B	515	-	-	-	X

## 2 Entry composition [i](#)

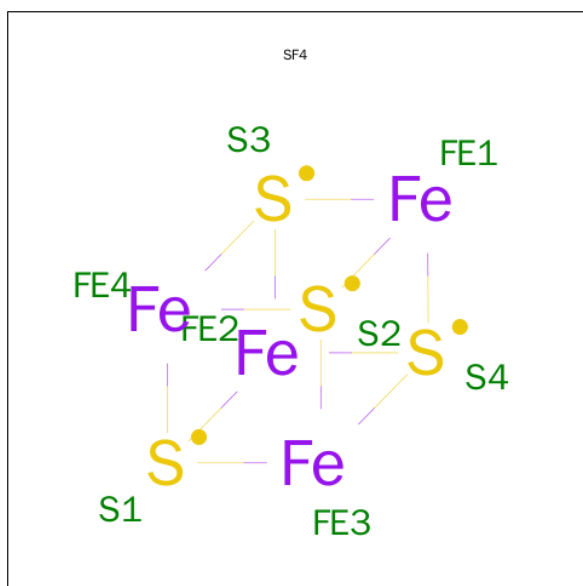
There are 7 unique types of molecules in this entry. The entry contains 8220 atoms, of which 0 are hydrogens and 0 are deuteriums.

In the tables below, the ZeroOcc column contains the number of atoms modelled with zero occupancy, the AltConf column contains the number of residues with at least one atom in alternate conformation and the Trace column contains the number of residues modelled with at most 2 atoms.

- Molecule 1 is a protein called TETRACHLOROETHENE REDUCTIVE DEHALOGENASE CATALYTIC SUBUNIT PCEA.

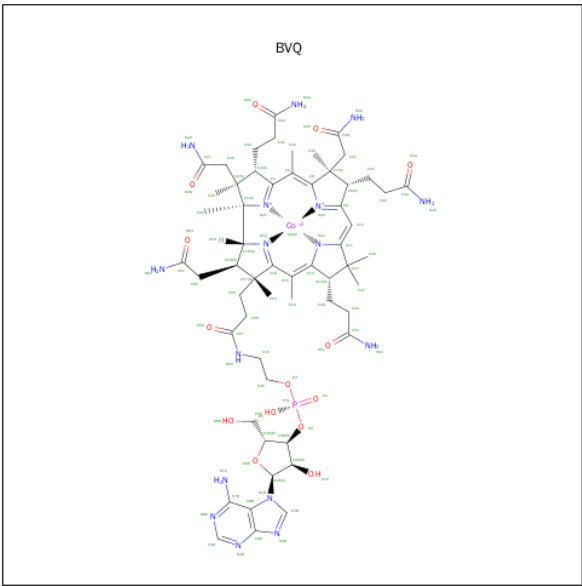
Mol	Chain	Residues	Atoms					ZeroOcc	AltConf	Trace
1	A	449	Total	C	N	O	S	0	8	0
			3616	2296	618	669	33			
1	B	438	Total	C	N	O	S	0	3	0
			3481	2207	596	647	31			

- Molecule 2 is IRON/SULFUR CLUSTER (three-letter code: SF4) (formula: Fe<sub>4</sub>S<sub>4</sub>).



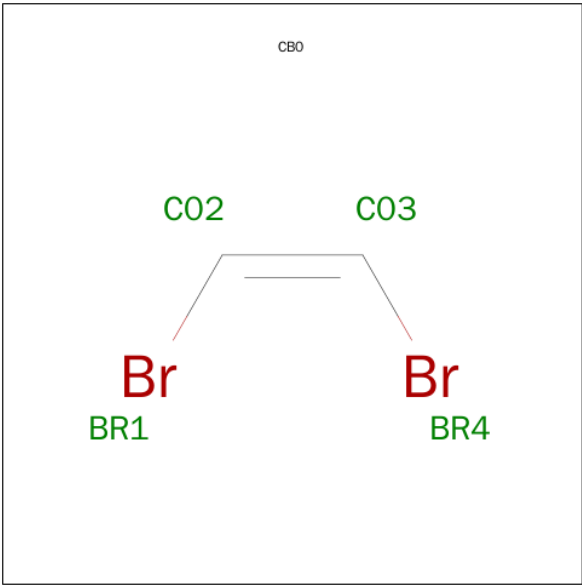
Mol	Chain	Residues	Atoms			ZeroOcc	AltConf
2	A	1	Total	Fe	S	0	0
			8	4	4		
2	A	1	Total	Fe	S	0	0
			8	4	4		
2	B	1	Total	Fe	S	0	0
			8	4	4		
2	B	1	Total	Fe	S	0	0
			8	4	4		

- Molecule 3 is NORPSEUDO-B12 (three-letter code: BVQ) (formula:  $C_{57}H_{82}CoN_{16}O_{14}P$ ).



Mol	Chain	Residues	Atoms						ZeroOcc	AltConf
3	A	1	Total	C	Co	N	O	P	0	0
			89	57	1	16	14	1		
3	B	1	Total	C	Co	N	O	P	0	0
			89	57	1	16	14	1		

- Molecule 4 is CIS-DIBROMOETHENE (three-letter code: CB0) (formula:  $C_2H_2Br_2$ ).



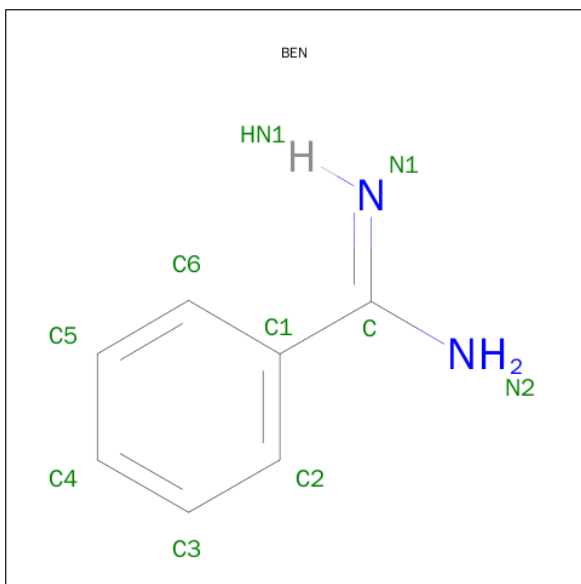
Mol	Chain	Residues	Atoms			ZeroOcc	AltConf
4	A	1	Total	Br	C	0	0
			4	2	2		

Continued on next page...

*Continued from previous page...*

Mol	Chain	Residues	Atoms			ZeroOcc	AltConf
4	B	1	Total	Br	C	0	0
			4	2	2		

- Molecule 5 is BENZAMIDINE (three-letter code: BEN) (formula: C<sub>7</sub>H<sub>8</sub>N<sub>2</sub>).



Mol	Chain	Residues	Atoms			ZeroOcc	AltConf
5	A	1	Total	C	N	0	0
			9	7	2		
5	A	1	Total	C	N	0	0
			9	7	2		
5	B	1	Total	C	N	0	0
			9	7	2		

- Molecule 6 is GLYCEROL (three-letter code: GOL) (formula: C<sub>3</sub>H<sub>8</sub>O<sub>3</sub>).



Mol	Chain	Residues	Atoms			ZeroOcc	AltConf
6	A	1	Total	C	O	0	0
			6	3	3		
6	A	1	Total	C	O	0	0
			6	3	3		
6	A	1	Total	C	O	0	0
			6	3	3		
6	A	1	Total	C	O	0	0
			6	3	3		
6	A	1	Total	C	O	0	0
			6	3	3		
6	A	1	Total	C	O	0	0
			6	3	3		
6	B	1	Total	C	O	0	0
			6	3	3		
6	B	1	Total	C	O	0	0
			6	3	3		
6	B	1	Total	C	O	0	0
			6	3	3		

- Molecule 7 is water.

Mol	Chain	Residues	Atoms		ZeroOcc	AltConf
7	A	454	Total	O	0	0
			454	454		
7	B	364	Total	O	0	0
			364	364		





## 4 Data and refinement statistics

Property	Value	Source
Space group	P 41	Depositor
Cell constants a, b, c, $\alpha$ , $\beta$ , $\gamma$	73.70 Å 73.70 Å 185.26 Å 90.00° 90.00° 90.00°	Depositor
Resolution (Å)	47.34 – 1.65 47.34 – 1.65	Depositor EDS
% Data completeness (in resolution range)	99.8 (47.34-1.65) 99.9 (47.34-1.65)	Depositor EDS
$R_{merge}$	0.10	Depositor
$R_{sym}$	(Not available)	Depositor
$\langle I/\sigma(I) \rangle$ <sup>1</sup>	2.14 (at 1.65 Å)	Xtriage
Refinement program	PHENIX (PHENIX.REFINE)	Depositor
R, $R_{free}$	0.134 , 0.157 0.140 , 0.159	Depositor DCC
$R_{free}$ test set	5912 reflections (5.26%)	DCC
Wilson B-factor (Å <sup>2</sup> )	22.0	Xtriage
Anisotropy	0.091	Xtriage
Bulk solvent $k_{sol}$ (e/Å <sup>3</sup> ), $B_{sol}$ (Å <sup>2</sup> )	0.36 , 42.8	EDS
Estimated twinning fraction	0.039 for h,-k,-l	Xtriage
L-test for twinning <sup>2</sup>	$\langle  L  \rangle = 0.49$ , $\langle L^2 \rangle = 0.32$	Xtriage
Outliers	0 of 118228 reflections	Xtriage
$F_o, F_c$ correlation	0.98	EDS
Total number of atoms	8220	wwPDB-VP
Average B, all atoms (Å <sup>2</sup> )	29.0	wwPDB-VP

Xtriage's analysis on translational NCS is as follows: *The largest off-origin peak in the Patterson function is 2.90% of the height of the origin peak. No significant pseudotranslation is detected.*

<sup>1</sup>Intensities estimated from amplitudes.

<sup>2</sup>Theoretical values of  $\langle |L| \rangle$ ,  $\langle L^2 \rangle$  for acentric reflections are 0.5, 0.375 respectively for untwinned datasets, and 0.333, 0.2 for perfectly twinned datasets.

## 5 Model quality [i](#)

### 5.1 Standard geometry [i](#)

Bond lengths and bond angles in the following residue types are not validated in this section: GOL, BVQ, BEN, SF4, CB0

The Z score for a bond length (or angle) is the number of standard deviations the observed value is removed from the expected value. A bond length (or angle) with  $|Z| > 5$  is considered an outlier worth inspection. RMSZ is the root-mean-square of all Z scores of the bond lengths (or angles).

Mol	Chain	Bond lengths		Bond angles	
		RMSZ	# Z  >5	RMSZ	# Z  >5
1	A	0.37	0/3707	0.54	0/5028
1	B	0.35	0/3570	0.52	0/4847
All	All	0.36	0/7277	0.53	0/9875

There are no bond length outliers.

There are no bond angle outliers.

There are no chirality outliers.

There are no planarity outliers.

### 5.2 Too-close contacts [i](#)

In the following table, the Non-H and H(model) columns list the number of non-hydrogen atoms and hydrogen atoms in the chain respectively. The H(added) column lists the number of hydrogen atoms added and optimized by MolProbity. The Clashes column lists the number of clashes within the asymmetric unit, whereas Symm-Clashes lists symmetry related clashes.

Mol	Chain	Non-H	H(model)	H(added)	Clashes	Symm-Clashes
1	A	3616	0	3514	20	0
1	B	3481	0	3365	13	0
2	A	16	0	0	0	0
2	B	16	0	0	0	0
3	A	89	0	82	5	0
3	B	89	0	82	5	0
4	A	4	0	0	0	0
4	B	4	0	0	0	0
5	A	18	0	14	1	0
5	B	9	0	7	3	0
6	A	42	0	56	0	0

*Continued on next page...*

*Continued from previous page...*

Mol	Chain	Non-H	H(model)	H(added)	Clashes	Symm-Clashes
6	B	18	0	24	2	0
7	A	454	0	0	3	0
7	B	364	0	0	4	0
All	All	8220	0	7144	39	0

The all-atom clashscore is defined as the number of clashes found per 1000 atoms (including hydrogen atoms). The all-atom clashscore for this structure is 3.

All (39) close contacts within the same asymmetric unit are listed below, sorted by their clash magnitude.

Atom-1	Atom-2	Interatomic distance (Å)	Clash overlap (Å)
1:A:451:ARG:HH12	1:B:451:ARG:HH12	1.06	1.00
1:A:25:ASN:ND2	7:A:2057:HOH:O	2.11	0.79
1:A:451:ARG:HH12	1:B:451:ARG:NH1	1.80	0.79
1:A:451:ARG:NH1	1:B:451:ARG:HH12	1.84	0.76
3:A:503:BVQ:H35	3:A:503:BVQ:H36A	1.73	0.71
1:B:5:LYS:NZ	7:B:2004:HOH:O	2.24	0.70
1:B:132:ARG:NH1	7:B:2166:HOH:O	2.25	0.70
3:B:503:BVQ:H36A	3:B:503:BVQ:H35	1.74	0.70
1:B:349:ARG:HE	6:B:515:GOL:H2	1.56	0.69
1:A:76:LYS:NZ	7:A:2138:HOH:O	2.29	0.65
3:A:503:BVQ:H53	3:A:503:BVQ:H55A	1.83	0.59
3:B:503:BVQ:H55A	3:B:503:BVQ:H53	1.85	0.58
1:A:25:ASN:OD1	1:A:27:LYS:HG2	2.05	0.56
5:B:511:BEN:N2	7:B:2228:HOH:O	2.25	0.56
1:B:186:LEU:HB3	5:B:511:BEN:N2	2.24	0.52
1:A:251[B]:MET:SD	1:B:251:MET:HG2	2.50	0.51
1:B:38:PHE:CD2	3:B:503:BVQ:H53A	2.48	0.49
1:A:270:SER:OG	1:A:308:LYS:HG2	2.12	0.49
1:A:5:LYS:HA	1:A:405:TRP:CH2	2.49	0.48
1:A:223[A]:ILE:HG23	1:A:248:ARG:CZ	2.43	0.48
1:B:186:LEU:HB3	5:B:511:BEN:HN22	1.78	0.48
1:A:448:ASP:OD1	7:A:2439:HOH:O	2.20	0.47
1:B:334:LYS:HD3	1:B:389:VAL:O	2.16	0.45
1:B:261:ARG:HA	1:B:265:TYR:O	2.17	0.45
6:B:515:GOL:H32	7:B:2320:HOH:O	2.17	0.44
1:A:442:THR:HG22	1:A:443:TYR:CD2	2.52	0.44
3:B:503:BVQ:H42	3:B:503:BVQ:C10	2.47	0.44
1:A:392:PHE:HA	1:A:397:ILE:HD12	2.00	0.43
1:A:38:PHE:CD2	3:A:503:BVQ:H53A	2.54	0.43
3:A:503:BVQ:H53	3:A:503:BVQ:C55	2.49	0.42

*Continued on next page...*

*Continued from previous page...*

Atom-1	Atom-2	Interatomic distance (Å)	Clash overlap (Å)
3:A:503:BVQ:C36	3:A:503:BVQ:H35	2.46	0.42
1:B:20:SER:HA	1:B:21:PRO:HD3	1.82	0.42
1:A:76:LYS:HB3	1:A:76:LYS:HE3	1.87	0.42
1:A:73:ASN:HB3	1:A:432:ILE:HD12	2.01	0.41
3:B:503:BVQ:H35	3:B:503:BVQ:C36	2.47	0.41
1:A:251[A]:MET:HG3	1:A:255:TRP:CE3	2.55	0.41
1:A:189:GLU:OE1	5:A:511:BEN:H4	2.21	0.41
1:A:261:ARG:HA	1:A:265:TYR:O	2.21	0.40
1:A:203:ILE:HG13	1:A:204:GLU:N	2.36	0.40

There are no symmetry-related clashes.

## 5.3 Torsion angles [i](#)

### 5.3.1 Protein backbone [i](#)

In the following table, the Percentiles column shows the percent Ramachandran outliers of the chain as a percentile score with respect to all X-ray entries followed by that with respect to entries of similar resolution.

The Analysed column shows the number of residues for which the backbone conformation was analysed, and the total number of residues.

Mol	Chain	Analysed	Favoured	Allowed	Outliers	Percentiles	
1	A	453/464 (98%)	445 (98%)	8 (2%)	0	100	100
1	B	437/464 (94%)	427 (98%)	10 (2%)	0	100	100
All	All	890/928 (96%)	872 (98%)	18 (2%)	0	100	100

There are no Ramachandran outliers to report.

### 5.3.2 Protein sidechains [i](#)

In the following table, the Percentiles column shows the percent sidechain outliers of the chain as a percentile score with respect to all X-ray entries followed by that with respect to entries of similar resolution.

The Analysed column shows the number of residues for which the sidechain conformation was analysed, and the total number of residues.

Mol	Chain	Analysed	Rotameric	Outliers	Percentiles	
1	A	387/389 (100%)	384 (99%)	3 (1%)	86	74
1	B	372/389 (96%)	369 (99%)	3 (1%)	86	74
All	All	759/778 (98%)	753 (99%)	6 (1%)	86	74

All (6) residues with a non-rotameric sidechain are listed below:

Mol	Chain	Res	Type
1	A	308	LYS
1	A	397	ILE
1	A	406	LEU
1	B	255	TRP
1	B	308	LYS
1	B	409	ASN

Some sidechains can be flipped to improve hydrogen bonding and reduce clashes. There are no such sidechains identified.

### 5.3.3 RNA [i](#)

There are no RNA molecules in this entry.

## 5.4 Non-standard residues in protein, DNA, RNA chains [i](#)

There are no non-standard protein/DNA/RNA residues in this entry.

## 5.5 Carbohydrates [i](#)

There are no carbohydrates in this entry.

## 5.6 Ligand geometry [i](#)

21 ligands are modelled in this entry.

In the following table, the Counts columns list the number of bonds (or angles) for which Mogul statistics could be retrieved, the number of bonds (or angles) that are observed in the model and the number of bonds (or angles) that are defined in the chemical component dictionary. The Link column lists molecule types, if any, to which the group is linked. The Z score for a bond length (or angle) is the number of standard deviations the observed value is removed from the expected value. A bond length (or angle) with  $|Z| > 2$  is considered an outlier worth inspection. RMSZ is the root-mean-square of all Z scores of the bond lengths (or angles).

Mol	Type	Chain	Res	Link	Bond lengths			Bond angles		
					Counts	RMSZ	# Z  > 2	Counts	RMSZ	# Z  > 2
2	SF4	A	501	1	0,12,12	0.00	-	0,24,24	0.00	-
2	SF4	A	502	1	0,12,12	0.00	-	0,24,24	0.00	-
3	BVQ	A	503	7	70,99,99	0.55	1 (1%)	99,162,162	1.17	8 (8%)
4	CB0	A	505	-	2,3,3	0.26	0	0,2,2	0.00	-
5	BEN	A	511	-	9,9,9	1.47	2 (22%)	9,11,11	0.72	0
5	BEN	A	512	-	9,9,9	1.58	2 (22%)	9,11,11	0.49	0
6	GOL	A	513	-	5,5,5	0.35	0	5,5,5	0.17	0
6	GOL	A	514	-	5,5,5	0.26	0	5,5,5	0.32	0
6	GOL	A	515	-	5,5,5	0.34	0	5,5,5	0.20	0
6	GOL	A	516	-	5,5,5	0.31	0	5,5,5	0.25	0
6	GOL	A	517	-	5,5,5	0.34	0	5,5,5	0.26	0
6	GOL	A	518	-	5,5,5	0.35	0	5,5,5	0.24	0
6	GOL	A	519	-	5,5,5	0.37	0	5,5,5	0.25	0
2	SF4	B	501	1	0,12,12	0.00	-	0,24,24	0.00	-
2	SF4	B	502	1	0,12,12	0.00	-	0,24,24	0.00	-
3	BVQ	B	503	7	70,99,99	0.54	1 (1%)	99,162,162	1.15	9 (9%)
4	CB0	B	505	-	2,3,3	0.22	0	0,2,2	0.00	-
5	BEN	B	511	-	9,9,9	1.51	2 (22%)	9,11,11	0.67	0
6	GOL	B	513	-	5,5,5	0.35	0	5,5,5	0.39	0
6	GOL	B	514	-	5,5,5	0.29	0	5,5,5	0.38	0
6	GOL	B	515	-	5,5,5	0.35	0	5,5,5	0.29	0

In the following table, the Chirals column lists the number of chiral outliers, the number of chiral centers analysed, the number of these observed in the model and the number defined in the chemical component dictionary. Similar counts are reported in the Torsion and Rings columns. '-' means no outliers of that kind were identified.

Mol	Type	Chain	Res	Link	Chirals	Torsions	Rings
2	SF4	A	501	1	-	0/0/48/48	0/6/5/5
2	SF4	A	502	1	-	0/0/48/48	0/6/5/5
3	BVQ	A	503	7	4/4/35/37	0/49/221/221	0/3/11/11
4	CB0	A	505	-	-	0/0/1/1	0/0/0/0
5	BEN	A	511	-	-	0/4/4/4	0/1/1/1
5	BEN	A	512	-	-	0/4/4/4	0/1/1/1
6	GOL	A	513	-	-	0/4/4/4	0/0/0/0
6	GOL	A	514	-	-	0/4/4/4	0/0/0/0
6	GOL	A	515	-	-	0/4/4/4	0/0/0/0
6	GOL	A	516	-	-	0/4/4/4	0/0/0/0
6	GOL	A	517	-	-	0/4/4/4	0/0/0/0
6	GOL	A	518	-	-	0/4/4/4	0/0/0/0
6	GOL	A	519	-	-	0/4/4/4	0/0/0/0

Continued on next page...

*Continued from previous page...*

Mol	Type	Chain	Res	Link	Chirals	Torsions	Rings
2	SF4	B	501	1	-	0/0/48/48	0/6/5/5
2	SF4	B	502	1	-	0/0/48/48	0/6/5/5
3	BVQ	B	503	7	4/4/35/37	0/49/221/221	0/3/11/11
4	CB0	B	505	-	-	0/0/1/1	0/0/0/0
5	BEN	B	511	-	-	0/4/4/4	0/1/1/1
6	GOL	B	513	-	-	0/4/4/4	0/0/0/0
6	GOL	B	514	-	-	0/4/4/4	0/0/0/0
6	GOL	B	515	-	-	0/4/4/4	0/0/0/0

All (8) bond length outliers are listed below:

Mol	Chain	Res	Type	Atoms	Z	Observed(Å)	Ideal(Å)
3	B	503	BVQ	C11-C10	-2.26	1.37	1.41
3	A	503	BVQ	P-O5	2.18	1.53	1.48
5	A	511	BEN	C1-C	2.38	1.51	1.47
5	B	511	BEN	C1-C	2.54	1.51	1.47
5	A	512	BEN	C1-C	2.79	1.52	1.47
5	A	511	BEN	C-N2	3.59	1.42	1.33
5	B	511	BEN	C-N2	3.64	1.42	1.33
5	A	512	BEN	C-N2	3.64	1.42	1.33

All (17) bond angle outliers are listed below:

Mol	Chain	Res	Type	Atoms	Z	Observed(°)	Ideal(°)
3	A	503	BVQ	C9-C10-C11	-3.28	124.05	132.28
3	B	503	BVQ	C35-C5-C4	-3.12	112.66	118.25
3	B	503	BVQ	C9-C10-C11	-3.02	124.72	132.28
3	B	503	BVQ	C13-C14-C15	-2.63	123.01	131.88
3	A	503	BVQ	C35-C5-C4	-2.60	113.59	118.25
3	A	503	BVQ	C13-C14-C15	-2.58	123.19	131.88
3	A	503	BVQ	C3-C4-C5	-2.44	123.65	131.88
3	B	503	BVQ	C3-C4-C5	-2.42	123.70	131.88
3	B	503	BVQ	C30-C3-C2	-2.42	114.32	119.11
3	A	503	BVQ	C36-C7-C8	-2.36	107.97	112.24
3	A	503	BVQ	C30-C3-C2	-2.22	114.71	119.11
3	B	503	BVQ	C13-C12-C11	2.13	103.73	100.76
3	B	503	BVQ	C19-C1-N21	2.19	104.39	102.16
3	A	503	BVQ	C35-C5-C6	4.20	125.76	118.25
3	B	503	BVQ	C1R-N1B-C8B	4.44	133.28	125.57
3	B	503	BVQ	C35-C5-C6	4.63	126.53	118.25
3	A	503	BVQ	C1R-N1B-C8B	5.60	135.29	125.57

All (8) chirality outliers are listed below:

Mol	Chain	Res	Type	Atom
3	A	503	BVQ	N24
3	A	503	BVQ	N23
3	A	503	BVQ	N22
3	A	503	BVQ	N21
3	B	503	BVQ	N24
3	B	503	BVQ	N23
3	B	503	BVQ	N22
3	B	503	BVQ	N21

There are no torsion outliers.

There are no ring outliers.

5 monomers are involved in 16 short contacts:

Mol	Chain	Res	Type	Clashes	Symm-Clashes
3	A	503	BVQ	5	0
5	A	511	BEN	1	0
3	B	503	BVQ	5	0
5	B	511	BEN	3	0
6	B	515	GOL	2	0

## 5.7 Other polymers [i](#)

There are no such residues in this entry.

## 5.8 Polymer linkage issues [i](#)

There are no chain breaks in this entry.



## 6 Fit of model and data ⓘ

### 6.1 Protein, DNA and RNA chains ⓘ

In the following table, the column labelled ‘#RSRZ> 2’ contains the number (and percentage) of RSRZ outliers, followed by percent RSRZ outliers for the chain as percentile scores relative to all X-ray entries and entries of similar resolution. The OWAB column contains the minimum, median, 95<sup>th</sup> percentile and maximum values of the occupancy-weighted average B-factor per residue. The column labelled ‘Q< 0.9’ lists the number of (and percentage) of residues with an average occupancy less than 0.9.

Mol	Chain	Analysed	<RSRZ>	#RSRZ>2	OWAB(Å <sup>2</sup> )	Q<0.9
1	A	449/464 (96%)	-0.11	12 (2%) 58 56	16, 24, 42, 60	0
1	B	438/464 (94%)	0.07	24 (5%) 29 24	18, 27, 53, 86	0
All	All	887/928 (95%)	-0.02	36 (4%) 41 37	16, 26, 47, 86	0

All (36) RSRZ outliers are listed below:

Mol	Chain	Res	Type	RSRZ
1	B	403	VAL	7.6
1	B	410	THR	6.0
1	B	405	TRP	5.5
1	B	397	ILE	5.3
1	B	396	ASN	5.3
1	A	416	LEU	5.2
1	B	407	ILE	5.1
1	A	415	PRO	4.2
1	A	414	ASP	4.2
1	A	417	MET	3.9
1	B	406	LEU	3.8
1	B	328	PHE	3.7
1	B	395	GLY	3.7
1	B	398	TRP	3.4
1	B	408	ASP	3.4
1	B	402	GLY	3.4
1	A	187	HIS	3.4
1	B	411	ARG	3.2
1	B	409	ASN	3.2
1	A	462	LYS	3.1
1	A	4	GLU	3.1
1	B	400	HIS	3.0
1	A	251[A]	MET	2.9
1	B	12	GLN	2.9

*Continued on next page...*

*Continued from previous page...*

Mol	Chain	Res	Type	RSRZ
1	B	5	LYS	2.7
1	A	76	LYS	2.7
1	B	348	PRO	2.7
1	B	26	ASP	2.6
1	B	401	ASP	2.6
1	B	399	ILE	2.6
1	A	132	ARG	2.4
1	B	16[A]	MET	2.4
1	B	17	THR	2.4
1	B	352	GLU	2.3
1	A	2	GLU	2.1
1	A	223[A]	ILE	2.1

## 6.2 Non-standard residues in protein, DNA, RNA chains [i](#)

There are no non-standard protein/DNA/RNA residues in this entry.

## 6.3 Carbohydrates [i](#)

There are no carbohydrates in this entry.

## 6.4 Ligands [i](#)

In the following table, the Atoms column lists the number of modelled atoms in the group and the number defined in the chemical component dictionary. LLDF column lists the quality of electron density of the group with respect to its neighbouring residues in protein, DNA or RNA chains. The B-factors column lists the minimum, median, 95<sup>th</sup> percentile and maximum values of B factors of atoms in the group. The column labelled 'Q< 0.9' lists the number of atoms with occupancy less than 0.9.

Mol	Type	Chain	Res	Atoms	RSCC	RSR	LLDF	B-factors(Å <sup>2</sup> )	Q<0.9
5	BEN	B	511	9/9	0.73	0.19	16.42	56,59,63,66	0
4	CB0	A	505	4/4	0.93	0.24	8.10	30,35,36,39	4
4	CB0	B	505	4/4	0.92	0.26	7.16	33,35,36,42	4
6	GOL	B	515	6/6	0.75	0.46	7.01	47,52,61,61	0
5	BEN	A	512	9/9	0.86	0.15	6.65	26,41,46,49	0
6	GOL	A	513	6/6	0.93	0.10	5.86	35,45,48,49	0
5	BEN	A	511	9/9	0.88	0.12	5.27	50,55,57,60	0
6	GOL	A	519	6/6	0.91	0.21	4.37	48,52,56,59	0
6	GOL	A	517	6/6	0.89	0.11	4.28	53,54,56,63	0

*Continued on next page...*

*Continued from previous page...*

Mol	Type	Chain	Res	Atoms	RSCC	RSR	LLDF	B-factors( $\text{\AA}^2$ )	Q<0.9
6	GOL	A	516	6/6	0.89	0.12	2.20	38,43,50,52	0
6	GOL	A	515	6/6	0.92	0.12	1.91	33,39,52,56	0
6	GOL	B	513	6/6	0.94	0.10	1.32	37,47,52,55	0
6	GOL	A	518	6/6	0.96	0.10	1.17	36,52,59,65	0
6	GOL	A	514	6/6	0.94	0.09	0.24	28,32,34,35	0
3	BVQ	A	503	89/89	0.97	0.08	-0.08	15,19,22,37	0
3	BVQ	B	503	89/89	0.97	0.08	-0.20	19,23,30,42	0
6	GOL	B	514	6/6	0.92	0.09	-0.24	29,33,35,35	0
2	SF4	B	501	8/8	0.99	0.06	-0.87	27,28,31,32	0
2	SF4	A	502	8/8	0.99	0.06	-0.92	19,20,21,21	0
2	SF4	A	501	8/8	0.99	0.06	-1.08	20,20,21,22	0
2	SF4	B	502	8/8	0.99	0.05	-1.79	24,25,25,26	0

## 6.5 Other polymers [i](#)

There are no such residues in this entry.