



# Full wwPDB X-ray Structure Validation Report ⓘ

Jan 31, 2016 – 10:41 PM GMT

PDB ID : 1USR  
Title : NEWCASTLE DISEASE VIRUS HEMAGGLUTININ-NEURAMINIDASE:  
EVIDENCE FOR A SECOND SIALIC ACID BINDING SITE AND IMPLI-  
CATIONS FOR FUSION  
Authors : Zaitsev, V.; Von Itzstein, M.; Groves, D.; Kiefel, M.; Takimoto, T.; Portner,  
A.; Taylor, G.  
Deposited on : 2003-11-28  
Resolution : 2.00 Å(reported)

This is a Full wwPDB X-ray Structure Validation Report for a publicly released PDB entry.  
We welcome your comments at [validation@mail.wwpdb.org](mailto:validation@mail.wwpdb.org)  
A user guide is available at  
<http://wwpdb.org/validation/2016/XrayValidationReportHelp>  
with specific help available everywhere you see the ⓘ symbol.

---

The following versions of software and data (see [references ⓘ](#)) were used in the production of this report:

MolProbity : 4.02b-467  
Mogul : 1.7 (RC4), CSD as536be (2015)  
Xtriage (Phenix) : **NOT EXECUTED**  
EDS : **NOT EXECUTED**  
Percentile statistics : 20151230.v01 (using entries in the PDB archive December 30th 2015)  
Ideal geometry (proteins) : Engh & Huber (2001)  
Ideal geometry (DNA, RNA) : Parkinson et al. (1996)  
Validation Pipeline (wwPDB-VP) : trunk26865

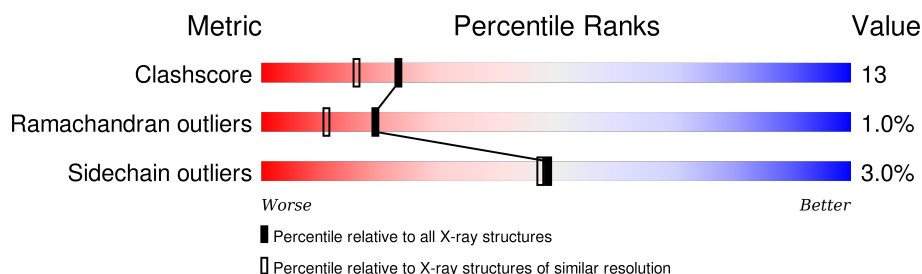
# 1 Overall quality at a glance

The following experimental techniques were used to determine the structure:

## *X-RAY DIFFRACTION*

The reported resolution of this entry is 2.00 Å.

Percentile scores (ranging between 0-100) for global validation metrics of the entry are shown in the following graphic. The table shows the number of entries on which the scores are based.



Metric	Whole archive (#Entries)	Similar resolution (#Entries, resolution range(Å))
Clashscore	102246	7340 (2.00-2.00)
Ramachandran outliers	100387	7248 (2.00-2.00)
Sidechain outliers	100360	7247 (2.00-2.00)

The table below summarises the geometric issues observed across the polymeric chains and their fit to the electron density. The red, orange, yellow and green segments on the lower bar indicate the fraction of residues that contain outliers for  $\geq 3$ , 2, 1 and 0 types of geometric quality criteria. A grey segment represents the fraction of residues that are not modelled. The numeric value for each fraction is indicated below the corresponding segment, with a dot representing fractions  $\leq 5\%$ . The upper red bar (where present) indicates the fraction of residues that have poor fit to the electron density. The numeric value is given above the bar.

Note EDS was not executed.

Mol	Chain	Length	Quality of chain
1	A	454	
1	B	454	

The following table lists non-polymeric compounds, carbohydrate monomers and non-standard residues in protein, DNA, RNA chains that are outliers for geometric or electron-density-fit criteria:

Mol	Type	Chain	Res	Chirality	Geometry	Clashes	Electron density
4	NDG	A	1573	-	-	X	-

## 2 Entry composition [i](#)

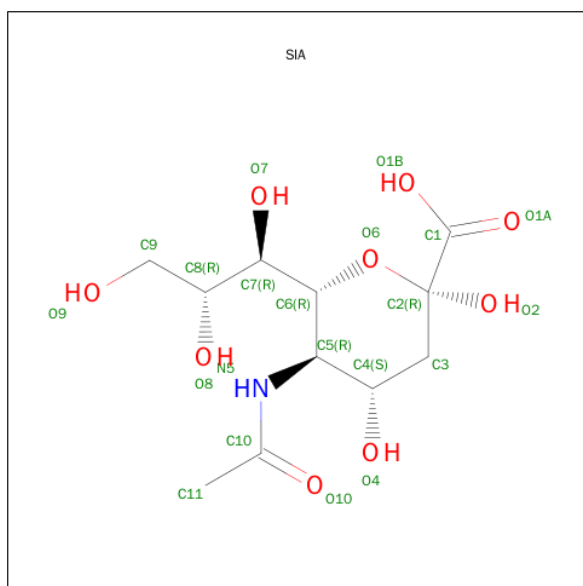
There are 7 unique types of molecules in this entry. The entry contains 7943 atoms, of which 0 are hydrogens and 0 are deuteriums.

In the tables below, the ZeroOcc column contains the number of atoms modelled with zero occupancy, the AltConf column contains the number of residues with at least one atom in alternate conformation and the Trace column contains the number of residues modelled with at most 2 atoms.

- Molecule 1 is a protein called HEMAGGLUTININ-NEURAMINIDASE GLYCOPROTEIN.

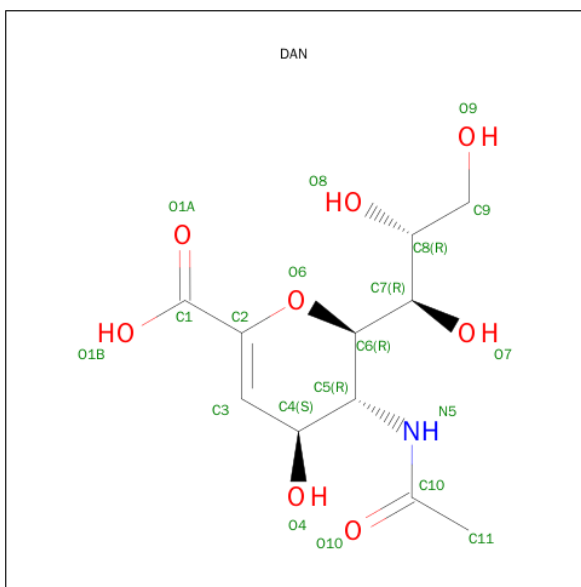
Mol	Chain	Residues	Atoms					ZeroOcc	AltConf	Trace
1	A	448	Total	C	N	O	S	0	0	1
			3450	2174	589	668	19			
1	B	447	Total	C	N	O	S	0	0	1
			3446	2172	588	667	19			

- Molecule 2 is SUGAR (O-SIALIC ACID) (three-letter code: SIA) (formula:  $C_{11}H_{19}NO_9$ ).



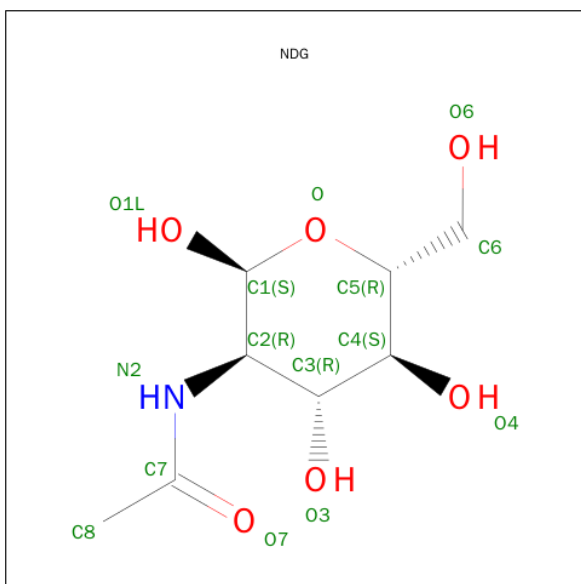
Mol	Chain	Residues	Atoms				ZeroOcc	AltConf
2	A	1	Total	C	N	O	0	0
			20	11	1	8		
2	B	1	Total	C	N	O	0	0
			21	11	1	9		

- Molecule 3 is 2-DEOXY-2,3-DEHYDRO-N-ACETYL-NEURAMINIC ACID (three-letter code: DAN) (formula:  $C_{11}H_{17}NO_8$ ).



Mol	Chain	Residues	Atoms				ZeroOcc	AltConf
3	A	1	Total	C	N	O	0	0
			20	11	1	8		
3	B	1	Total	C	N	O	0	0
			20	11	1	8		

- Molecule 4 is SUGAR (2-(ACETYLAMINO)-2-DEOXY-A-D-GLUCOPYRANOSE) (three-letter code: NDG) (formula:  $C_8H_{15}NO_6$ ).



Mol	Chain	Residues	Atoms				ZeroOcc	AltConf
4	A	1	Total	C	N	O	0	0
			15	8	1	6		

*Continued on next page...*

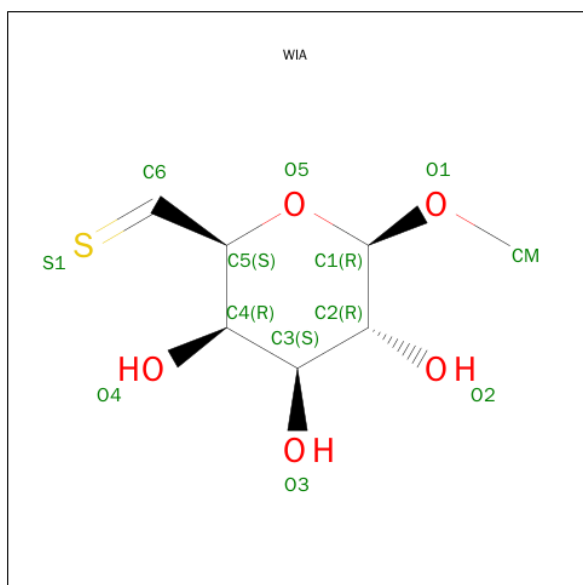
Continued from previous page...

Mol	Chain	Residues	Atoms				ZeroOcc	AltConf
4	B	1	Total	C	N	O	0	0
			15	8	1	6		

- Molecule 5 is CALCIUM ION (three-letter code: CA) (formula: Ca).

Mol	Chain	Residues	Atoms		ZeroOcc	AltConf
5	B	1	Total	Ca	0	0
			1	1		
5	A	1	Total	Ca	0	0
			1	1		

- Molecule 6 is METHYL(6S)-1-THIO-L-MANNO-HEXODIALDO-6,2-PYRANOSIDE (three-letter code: WIA) (formula: C<sub>7</sub>H<sub>12</sub>O<sub>5</sub>S).



Mol	Chain	Residues	Atoms				ZeroOcc	AltConf
6	A	1	Total	C	O	S	0	0
			13	7	5	1		

- Molecule 7 is water.

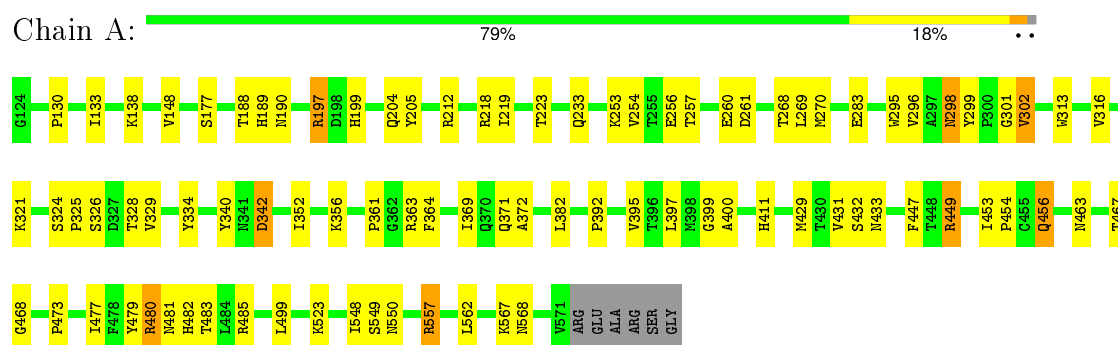
Mol	Chain	Residues	Atoms		ZeroOcc	AltConf
7	A	456	Total	O	0	0
			456	456		
7	B	465	Total	O	0	0
			465	465		

### 3 Residue-property plots

These plots are drawn for all protein, RNA and DNA chains in the entry. The first graphic for a chain summarises the proportions of errors displayed in the second graphic. The second graphic shows the sequence view annotated by issues in geometry and electron density. Residues are color-coded according to the number of geometric quality criteria for which they contain at least one outlier: green = 0, yellow = 1, orange = 2 and red = 3 or more. A red dot above a residue indicates a poor fit to the electron density ( $RSRZ > 2$ ). Stretches of 2 or more consecutive residues without any outlier are shown as a green connector. Residues present in the sample, but not in the model, are shown in grey.

Note EDS was not executed.

#### • Molecule 1: HEMAGGLUTININ-NEURAMINIDASE GLYCOPROTEIN



#### • Molecule 1: HEMAGGLUTININ-NEURAMINIDASE GLYCOPROTEIN



## 4 Data and refinement statistics

Xtriage (Phenix) and EDS were not executed - this section will therefore be incomplete.

Property	Value	Source
Space group	P 21 21 2	Depositor
Cell constants a, b, c, $\alpha$ , $\beta$ , $\gamma$	175.48 Å 99.26 Å 64.33 Å 90.00° 90.00° 90.00°	Depositor
Resolution (Å)	12.00 – 2.00	Depositor
% Data completeness (in resolution range)	98.5 (12.00-2.00)	Depositor
$R_{merge}$	0.08	Depositor
$R_{sym}$	(Not available)	Depositor
Refinement program	CNS 1.1	Depositor
R, $R_{free}$	0.190 , 0.226	Depositor
Estimated twinning fraction	No twinning to report.	Xtriage
Total number of atoms	7943	wwPDB-VP
Average B, all atoms (Å <sup>2</sup> )	24.0	wwPDB-VP

## 5 Model quality

### 5.1 Standard geometry

Bond lengths and bond angles in the following residue types are not validated in this section: CA, NDG, SIA, WIA, DAN

The Z score for a bond length (or angle) is the number of standard deviations the observed value is removed from the expected value. A bond length (or angle) with  $|Z| > 5$  is considered an outlier worth inspection. RMSZ is the root-mean-square of all Z scores of the bond lengths (or angles).

Mol	Chain	Bond lengths		Bond angles	
		RMSZ	# Z  >5	RMSZ	# Z  >5
1	A	0.34	0/3535	0.66	0/4809
1	B	0.35	0/3531	0.66	0/4804
All	All	0.35	0/7066	0.66	0/9613

There are no bond length outliers.

There are no bond angle outliers.

There are no chirality outliers.

There are no planarity outliers.

### 5.2 Too-close contacts

In the following table, the Non-H and H(model) columns list the number of non-hydrogen atoms and hydrogen atoms in the chain respectively. The H(added) column lists the number of hydrogen atoms added and optimized by MolProbity. The Clashes column lists the number of clashes within the asymmetric unit, whereas Symm-Clashes lists symmetry related clashes.

Mol	Chain	Non-H	H(model)	H(added)	Clashes	Symm-Clashes
1	A	3450	0	3345	84	0
1	B	3446	0	3343	97	0
2	A	20	0	16	0	0
2	B	21	0	18	0	0
3	A	20	0	16	0	0
3	B	20	0	16	0	0
4	A	15	0	15	12	0
4	B	15	0	15	6	0
5	A	1	0	0	0	0
5	B	1	0	0	0	0
6	A	13	0	12	0	0

*Continued on next page...*



*Continued from previous page...*

Mol	Chain	Non-H	H(model)	H(added)	Clashes	Symm-Clashes
7	A	456	0	0	13	0
7	B	465	0	0	15	0
All	All	7943	0	6796	184	0

The all-atom clashscore is defined as the number of clashes found per 1000 atoms (including hydrogen atoms). The all-atom clashscore for this structure is 13.

All (184) close contacts within the same asymmetric unit are listed below, sorted by their clash magnitude.

Atom-1	Atom-2	Interatomic distance (Å)	Clash overlap (Å)
1:B:481:ASN:ND2	4:B:1571:NDG:H1	1.64	1.12
1:A:481:ASN:ND2	4:A:1573:NDG:H1	1.65	1.11
1:A:481:ASN:HD21	4:A:1573:NDG:H1	1.09	1.08
1:A:481:ASN:HD21	4:A:1573:NDG:C1	1.73	1.01
1:A:190:ASN:HD22	1:A:204:GLN:HE21	1.11	0.95
1:B:238:CYS:HG	1:B:251:CYS:HG	1.11	0.91
1:B:301:GLY:O	1:B:302:VAL:HG22	1.74	0.88
1:A:550:ASN:HB2	1:A:557:ARG:HG2	1.55	0.87
1:B:197:ARG:NE	1:B:197:ARG:H	1.72	0.87
1:B:481:ASN:HD21	4:B:1571:NDG:H1	1.35	0.86
1:A:223:THR:HG21	7:A:2045:HOH:O	1.76	0.85
1:A:456:GLN:NE2	1:A:456:GLN:H	1.75	0.84
1:A:301:GLY:O	1:A:302:VAL:HG22	1.78	0.83
1:A:481:ASN:CG	4:A:1573:NDG:H1	1.99	0.83
1:A:361:PRO:HD2	1:A:369:ILE:HD13	1.60	0.82
1:B:481:ASN:CG	4:B:1571:NDG:H1	2.00	0.82
1:A:197:ARG:H	1:A:197:ARG:HD3	1.44	0.82
1:B:223:THR:HG21	7:B:2042:HOH:O	1.78	0.81
1:B:456:GLN:H	1:B:456:GLN:NE2	1.78	0.81
1:B:481:ASN:HD21	4:B:1571:NDG:C1	1.93	0.80
1:B:283:GLU:HA	1:B:382:LEU:HD13	1.65	0.79
1:A:483:THR:HB	4:A:1573:NDG:O1L	1.83	0.77
1:A:283:GLU:HA	1:A:382:LEU:HD13	1.66	0.75
1:B:481:ASN:ND2	4:B:1571:NDG:C1	2.48	0.73
1:B:316:VAL:HG13	1:B:372:ALA:HB3	1.71	0.73
1:B:197:ARG:HE	1:B:197:ARG:H	1.35	0.72
1:A:371:GLN:HE22	1:A:400:ALA:H	1.36	0.71
1:B:185:TYR:OH	1:B:223:THR:HG22	1.90	0.71
1:B:289:THR:HG22	7:B:2198:HOH:O	1.90	0.71
1:B:289:THR:HG23	7:B:2196:HOH:O	1.90	0.71
1:A:321:LYS:HG2	7:A:2134:HOH:O	1.90	0.71

*Continued on next page...*

*Continued from previous page...*

Atom-1	Atom-2	Interatomic distance (Å)	Clash overlap (Å)
1:B:238:CYS:SG	1:B:251:CYS:HB3	2.32	0.70
1:A:481:ASN:OD1	4:A:1573:NDG:H1	1.91	0.70
1:B:361:PRO:HD2	1:B:369:ILE:HD13	1.73	0.70
1:A:190:ASN:HD22	1:A:204:GLN:NE2	1.87	0.69
1:B:190:ASN:HD22	1:B:204:GLN:HE21	1.40	0.69
1:A:269:LEU:HD23	1:A:270:MET:N	2.07	0.69
1:A:268:THR:H	1:A:298:ASN:HD21	1.42	0.68
1:A:456:GLN:HE21	1:A:456:GLN:H	1.40	0.68
1:B:550:ASN:HB2	1:B:557:ARG:HG2	1.76	0.68
1:A:371:GLN:NE2	1:A:400:ALA:H	1.91	0.67
1:A:392:PRO:O	1:A:395:VAL:HG12	1.94	0.67
1:A:316:VAL:HG13	1:A:372:ALA:HB3	1.77	0.66
1:A:548:ILE:O	1:A:557:ARG:HG3	1.95	0.66
1:B:233:GLN:NE2	1:B:253:LYS:HZ2	1.92	0.66
1:B:233:GLN:HE22	1:B:253:LYS:HZ2	1.43	0.66
4:A:1573:NDG:C7	7:A:2448:HOH:O	2.44	0.66
1:B:484:LEU:HD13	7:B:2203:HOH:O	1.95	0.66
1:B:131:ASP:O	1:B:535:VAL:HG22	1.96	0.65
1:B:475:PRO:HB3	7:B:2203:HOH:O	1.96	0.65
1:B:268:THR:H	1:B:298:ASN:HD21	1.44	0.65
1:B:371:GLN:HE21	1:B:415:GLN:HE21	1.45	0.65
1:B:548:ILE:O	1:B:557:ARG:HG3	1.98	0.64
1:A:148:VAL:HG13	1:A:477:ILE:HD12	1.79	0.64
1:B:238:CYS:HG	1:B:251:CYS:CB	2.11	0.62
1:B:371:GLN:NE2	1:B:415:GLN:HE21	1.96	0.62
1:A:550:ASN:CB	1:A:557:ARG:HG2	2.27	0.62
1:B:320:LEU:HB2	7:B:2233:HOH:O	2.00	0.61
1:A:480:ARG:HG2	1:A:480:ARG:NH1	2.15	0.61
1:B:268:THR:H	1:B:298:ASN:ND2	1.99	0.60
1:A:480:ARG:HG2	1:A:480:ARG:HH11	1.67	0.60
1:B:231:ASP:HB2	7:B:2136:HOH:O	2.01	0.60
1:A:257:THR:OG1	1:A:260:GLU:HG3	2.02	0.59
1:B:249:MET:HG2	1:B:251:CYS:SG	2.41	0.59
1:A:479:TYR:CE1	4:A:1573:NDG:H6C2	2.37	0.59
1:A:479:TYR:CE2	1:A:485:ARG:HG2	2.38	0.58
1:B:369:ILE:HD12	1:B:369:ILE:N	2.18	0.58
1:A:268:THR:H	1:A:298:ASN:ND2	2.00	0.58
1:A:369:ILE:HD12	1:A:369:ILE:N	2.19	0.58
1:B:324:SER:O	1:B:328:THR:HG23	2.05	0.57
1:B:238:CYS:SG	1:B:251:CYS:CB	2.93	0.57
1:A:328:THR:HG22	7:A:2210:HOH:O	2.05	0.57

*Continued on next page...*

*Continued from previous page...*

Atom-1	Atom-2	Interatomic distance (Å)	Clash overlap (Å)
1:B:209:GLY:HA3	1:B:223:THR:HA	1.87	0.57
1:B:197:ARG:CZ	1:B:197:ARG:HB2	2.36	0.56
1:A:197:ARG:N	1:A:197:ARG:HD3	2.18	0.55
1:A:296:VAL:CG1	1:A:321:LYS:HG3	2.35	0.55
1:A:301:GLY:O	1:A:302:VAL:CG2	2.54	0.55
1:A:371:GLN:HE21	1:A:399:GLY:HA2	1.71	0.54
1:B:233:GLN:NE2	1:B:253:LYS:NZ	2.54	0.54
1:A:199:HIS:HE1	1:A:254:VAL:HG21	1.73	0.54
1:A:483:THR:CB	4:A:1573:NDG:O1L	2.53	0.54
1:B:257:THR:OG1	1:B:260:GLU:HG3	2.06	0.54
1:B:367:LYS:HE3	7:B:2293:HOH:O	2.07	0.54
1:A:325:PRO:O	1:A:329:VAL:HG13	2.08	0.53
1:A:219:ILE:HD11	1:A:562:LEU:HD21	1.91	0.53
1:A:479:TYR:CD1	1:A:485:ARG:HD2	2.44	0.53
1:A:453:ILE:HG23	1:A:454:PRO:HA	1.91	0.52
1:A:296:VAL:HG12	1:A:321:LYS:HG3	1.91	0.52
1:A:299:TYR:O	1:A:316:VAL:HG23	2.10	0.52
1:B:269:LEU:HD23	1:B:270:MET:H	1.74	0.52
1:B:479:TYR:CE2	1:B:485:ARG:HG2	2.45	0.52
1:B:411:HIS:HB2	1:B:429:MET:O	2.10	0.51
1:B:233:GLN:HE22	1:B:253:LYS:NZ	2.07	0.51
1:A:197:ARG:CD	1:A:197:ARG:H	2.12	0.51
1:B:320:LEU:HD12	7:B:2233:HOH:O	2.11	0.51
1:B:456:GLN:H	1:B:456:GLN:HE21	1.58	0.51
1:A:363:ARG:HD2	7:A:2350:HOH:O	2.10	0.51
4:A:1573:NDG:H4	7:A:2450:HOH:O	2.11	0.51
1:B:203:HIS:HB3	1:B:230:ASP:OD1	2.11	0.51
1:B:268:THR:N	1:B:298:ASN:HD21	2.09	0.51
1:A:233:GLN:CD	1:A:253:LYS:HZ3	2.15	0.50
1:A:256:GLU:OE2	1:A:261:ASP:HA	2.11	0.50
1:B:527:THR:HA	1:B:545:ILE:O	2.11	0.50
1:A:567:LYS:HE3	7:A:2024:HOH:O	2.13	0.49
1:B:192:ILE:HG21	1:B:198:ASP:HB3	1.94	0.49
1:B:199:HIS:CE1	1:B:254:VAL:HG21	2.47	0.49
1:A:233:GLN:NE2	1:A:253:LYS:HZ3	2.11	0.49
1:A:411:HIS:HB2	1:A:429:MET:O	2.12	0.49
1:A:392:PRO:HG2	1:A:395:VAL:HG12	1.96	0.48
1:B:550:ASN:CB	1:B:557:ARG:HG2	2.43	0.47
1:A:233:GLN:NE2	1:A:253:LYS:NZ	2.63	0.47
1:B:499:LEU:HD23	1:B:523:LYS:HA	1.97	0.47
1:B:481:ASN:OD1	4:B:1571:NDG:H1	2.16	0.46

*Continued on next page...*

*Continued from previous page...*

Atom-1	Atom-2	Interatomic distance (Å)	Clash overlap (Å)
1:A:326:SER:O	1:A:329:VAL:HG22	2.15	0.46
7:A:2044:HOH:O	1:B:203:HIS:HE1	1.98	0.46
1:A:432:SER:O	1:A:433:ASN:HB2	2.14	0.46
1:B:383:GLY:O	1:B:386:PRO:HD3	2.15	0.46
1:B:371:GLN:HE22	1:B:400:ALA:H	1.63	0.46
1:A:479:TYR:CD2	1:A:485:ARG:HG2	2.50	0.46
1:A:456:GLN:HE21	1:A:456:GLN:N	2.10	0.46
1:B:185:TYR:HH	1:B:223:THR:HG22	1.81	0.46
1:B:359:TYR:O	1:B:368:ARG:HA	2.16	0.46
1:B:367:LYS:O	1:B:369:ILE:HD12	2.15	0.46
1:B:425:LEU:HD23	1:B:443:THR:HG22	1.97	0.46
1:B:197:ARG:NE	1:B:197:ARG:N	2.53	0.45
1:A:549:SER:O	1:A:557:ARG:HD2	2.17	0.45
1:B:516:ARG:HH11	1:B:516:ARG:HG2	1.81	0.45
1:A:361:PRO:CD	1:A:369:ILE:HD13	2.39	0.45
1:B:237:SER:O	1:B:300:PRO:HB2	2.15	0.45
1:B:202:SER:OG	1:B:236:LYS:HE3	2.17	0.45
1:A:334:TYR:CD1	1:A:356:LYS:HE3	2.52	0.45
1:A:295:TRP:O	1:A:321:LYS:HE2	2.17	0.45
1:B:392:PRO:O	1:B:395:VAL:HG12	2.16	0.45
1:B:371:GLN:NE2	1:B:400:ALA:H	2.15	0.44
1:B:208:LEU:C	1:B:208:LEU:HD23	2.37	0.44
1:B:484:LEU:HD22	7:B:2203:HOH:O	2.17	0.44
1:A:499:LEU:HD23	1:A:523:LYS:HA	1.99	0.44
1:A:449:ARG:O	1:A:449:ARG:NE	2.51	0.44
1:B:197:ARG:CD	1:B:197:ARG:H	2.29	0.44
1:B:199:HIS:HE1	1:B:254:VAL:HG21	1.82	0.44
1:A:483:THR:HB	4:A:1573:NDG:H1L	1.82	0.44
1:B:198:ASP:OD1	1:B:199:HIS:N	2.51	0.44
1:B:535:VAL:HG21	7:B:2007:HOH:O	2.16	0.44
1:B:475:PRO:HA	1:B:487:VAL:HG12	1.99	0.43
1:B:368:ARG:HB3	7:B:2233:HOH:O	2.18	0.43
1:B:253:LYS:NZ	1:B:283:GLU:OE2	2.46	0.43
1:B:479:TYR:CD1	1:B:485:ARG:HD2	2.53	0.43
1:A:253:LYS:HD2	1:A:269:LEU:HD22	2.01	0.43
1:A:233:GLN:HE22	1:A:253:LYS:NZ	2.16	0.43
1:A:177:SER:HB3	1:A:188:THR:HG22	2.01	0.43
1:B:481:ASN:O	1:B:482:HIS:HB2	2.18	0.43
1:A:324:SER:O	1:A:328:THR:HG23	2.18	0.43
1:B:321:LYS:HG2	7:B:2142:HOH:O	2.18	0.43
1:B:212:ARG:HG3	1:B:222:SER:HB2	2.00	0.42

*Continued on next page...*

*Continued from previous page...*

Atom-1	Atom-2	Interatomic distance (Å)	Clash overlap (Å)
1:B:392:PRO:HG2	1:B:395:VAL:HG12	2.01	0.42
1:B:130:PRO:HA	1:B:133:ILE:HG12	2.00	0.42
1:A:218:ARG:HD3	7:A:2042:HOH:O	2.18	0.42
1:A:334:TYR:CZ	1:A:352:ILE:HG23	2.55	0.42
1:A:130:PRO:HA	1:A:133:ILE:HG12	2.02	0.42
1:A:313:TRP:CH2	1:A:431:VAL:HG23	2.55	0.42
1:A:454:PRO:HA	1:A:456:GLN:HE22	1.83	0.42
1:B:138:LYS:HD3	1:B:138:LYS:HA	1.92	0.42
1:B:523:LYS:HB3	1:B:549:SER:HB3	2.02	0.41
1:B:132:PHE:CE2	1:B:213:THR:HG23	2.55	0.41
1:A:138:LYS:HE3	7:A:2014:HOH:O	2.20	0.41
1:B:470:TYR:C	1:B:470:TYR:CD1	2.94	0.41
1:A:188:THR:HA	1:A:205:TYR:O	2.21	0.41
1:B:559:VAL:HG23	1:B:559:VAL:O	2.20	0.41
1:B:129:ASP:OD2	1:B:212:ARG:HB3	2.21	0.41
4:A:1573:NDG:H3	7:A:2447:HOH:O	2.21	0.41
1:B:329:VAL:HG13	7:B:2236:HOH:O	2.19	0.41
1:B:322:PRO:O	1:B:323:ASN:HB2	2.19	0.41
1:A:467:THR:OG1	1:A:468:GLY:N	2.54	0.41
1:A:453:ILE:HA	1:A:456:GLN:NE2	2.36	0.41
1:A:481:ASN:O	1:A:482:HIS:HB2	2.20	0.41
1:A:364:PHE:HB2	7:A:2260:HOH:O	2.20	0.41
1:B:369:ILE:HD11	7:B:2282:HOH:O	2.20	0.41
1:B:152:TYR:HB2	1:B:153:PRO:HD2	2.03	0.40
1:A:369:ILE:N	1:A:369:ILE:CD1	2.83	0.40
1:A:431:VAL:HG12	7:A:2314:HOH:O	2.21	0.40
1:B:369:ILE:N	1:B:369:ILE:CD1	2.83	0.40
1:B:194:SER:OG	1:B:198:ASP:HB2	2.21	0.40
1:B:150:SER:HA	1:B:568:ASN:ND2	2.36	0.40
1:A:199:HIS:O	1:A:199:HIS:ND1	2.54	0.40

There are no symmetry-related clashes.

## 5.3 Torsion angles ⓘ

### 5.3.1 Protein backbone ⓘ

In the following table, the Percentiles column shows the percent Ramachandran outliers of the chain as a percentile score with respect to all X-ray entries followed by that with respect to entries of similar resolution.

The Analysed column shows the number of residues for which the backbone conformation was analysed, and the total number of residues.

Mol	Chain	Analysed	Favoured	Allowed	Outliers	Percentiles	
1	A	446/454 (98%)	420 (94%)	22 (5%)	4 (1%)	21	13
1	B	445/454 (98%)	414 (93%)	26 (6%)	5 (1%)	17	9
All	All	891/908 (98%)	834 (94%)	48 (5%)	9 (1%)	19	11

All (9) Ramachandran outliers are listed below:

Mol	Chain	Res	Type
1	B	568	ASN
1	B	569	ASP
1	B	340	TYR
1	A	342	ASP
1	A	340	TYR
1	B	473	PRO
1	A	473	PRO
1	B	302	VAL
1	A	302	VAL

### 5.3.2 Protein sidechains ⓘ

In the following table, the Percentiles column shows the percent sidechain outliers of the chain as a percentile score with respect to all X-ray entries followed by that with respect to entries of similar resolution.

The Analysed column shows the number of residues for which the sidechain conformation was analysed, and the total number of residues.

Mol	Chain	Analysed	Rotameric	Outliers	Percentiles	
1	A	387/392 (99%)	374 (97%)	13 (3%)	44	41
1	B	387/392 (99%)	377 (97%)	10 (3%)	54	54
All	All	774/784 (99%)	751 (97%)	23 (3%)	48	47

All (23) residues with a non-rotameric sidechain are listed below:

Mol	Chain	Res	Type
1	A	189	HIS
1	A	197	ARG
1	A	212	ARG
1	A	298	ASN

*Continued on next page...*

*Continued from previous page...*

Mol	Chain	Res	Type
1	A	342	ASP
1	A	397	LEU
1	A	447	PHE
1	A	449	ARG
1	A	456	GLN
1	A	463	ASN
1	A	480	ARG
1	A	557	ARG
1	A	568	ASN
1	B	197	ARG
1	B	256	GLU
1	B	269	LEU
1	B	298	ASN
1	B	341	ASN
1	B	397	LEU
1	B	447	PHE
1	B	449	ARG
1	B	456	GLN
1	B	557	ARG

Some sidechains can be flipped to improve hydrogen bonding and reduce clashes. All (20) such sidechains are listed below:

Mol	Chain	Res	Type
1	A	157	GLN
1	A	203	HIS
1	A	204	GLN
1	A	233	GLN
1	A	298	ASN
1	A	371	GLN
1	A	433	ASN
1	A	456	GLN
1	A	463	ASN
1	A	496	GLN
1	A	568	ASN
1	B	157	GLN
1	B	203	HIS
1	B	204	GLN
1	B	233	GLN
1	B	298	ASN
1	B	371	GLN
1	B	456	GLN
1	B	496	GLN

*Continued on next page...*

*Continued from previous page...*

Mol	Chain	Res	Type
1	B	568	ASN

### 5.3.3 RNA ⓘ

There are no RNA molecules in this entry.

## 5.4 Non-standard residues in protein, DNA, RNA chains ⓘ

There are no non-standard protein/DNA/RNA residues in this entry.

## 5.5 Carbohydrates ⓘ

There are no carbohydrates in this entry.

## 5.6 Ligand geometry ⓘ

Of 9 ligands modelled in this entry, 2 are monoatomic - leaving 7 for Mogul analysis.

In the following table, the Counts columns list the number of bonds (or angles) for which Mogul statistics could be retrieved, the number of bonds (or angles) that are observed in the model and the number of bonds (or angles) that are defined in the chemical component dictionary. The Link column lists molecule types, if any, to which the group is linked. The Z score for a bond length (or angle) is the number of standard deviations the observed value is removed from the expected value. A bond length (or angle) with  $|Z| > 2$  is considered an outlier worth inspection. RMSZ is the root-mean-square of all Z scores of the bond lengths (or angles).

Mol	Type	Chain	Res	Link	Bond lengths			Bond angles		
					Counts	RMSZ	# $ Z  > 2$	Counts	RMSZ	# $ Z  > 2$
2	SIA	A	1571	6	16,20,21	5.25	8 (50%)	18,28,31	2.40	7 (38%)
3	DAN	A	1572	-	16,20,20	1.46	3 (18%)	19,28,28	1.96	5 (26%)
4	NDG	A	1573	-	15,15,15	0.53	0	17,21,21	0.52	0
6	WIA	A	1578	2	10,13,13	1.53	2 (20%)	13,18,18	1.64	1 (7%)
3	DAN	B	1570	-	16,20,20	1.70	1 (6%)	19,28,28	1.71	4 (21%)
4	NDG	B	1571	-	15,15,15	0.48	0	17,21,21	0.60	0
2	SIA	B	1572	-	17,21,21	0.79	0	19,31,31	0.86	0

In the following table, the Chirals column lists the number of chiral outliers, the number of chiral centers analysed, the number of these observed in the model and the number defined in the chemical component dictionary. Similar counts are reported in the Torsion and Rings columns. '-' means no outliers of that kind were identified.



Mol	Type	Chain	Res	Link	Chirals	Torsions	Rings
2	SIA	A	1571	6	-	0/14/34/38	0/1/1/1
3	DAN	A	1572	-	-	0/14/34/34	0/1/1/1
4	NDG	A	1573	-	-	0/6/26/26	0/1/1/1
6	WIA	A	1578	2	-	0/2/24/24	0/1/1/1
3	DAN	B	1570	-	-	0/14/34/34	0/1/1/1
4	NDG	B	1571	-	-	0/6/26/26	0/1/1/1
2	SIA	B	1572	-	-	0/14/38/38	0/1/1/1

All (14) bond length outliers are listed below:

Mol	Chain	Res	Type	Atoms	Z	Observed(Å)	Ideal(Å)
2	A	1571	SIA	O8-C8	-14.87	1.09	1.43
2	A	1571	SIA	C11-C10	-11.85	1.26	1.50
2	A	1571	SIA	C5-N5	-5.03	1.37	1.45
2	A	1571	SIA	C7-C6	-2.74	1.49	1.52
3	A	1572	DAN	O6-C6	-2.63	1.41	1.46
6	A	1578	WIA	O5-C1	2.10	1.47	1.41
2	A	1571	SIA	C3-C2	2.37	1.56	1.52
6	A	1578	WIA	O1-C1	2.69	1.44	1.40
3	A	1572	DAN	C3-C2	2.86	1.36	1.32
3	A	1572	DAN	O8-C8	2.92	1.49	1.43
2	A	1571	SIA	C6-C5	3.07	1.58	1.53
2	A	1571	SIA	C8-C7	3.08	1.59	1.53
2	A	1571	SIA	O6-C6	3.27	1.49	1.43
3	B	1570	DAN	C3-C2	5.40	1.40	1.32

All (17) bond angle outliers are listed below:

Mol	Chain	Res	Type	Atoms	Z	Observed(°)	Ideal(°)
3	A	1572	DAN	C4-C3-C2	-4.98	113.19	121.60
2	A	1571	SIA	C9-C8-C7	-4.44	102.05	112.48
2	A	1571	SIA	O10-C10-C11	-4.10	114.53	122.06
3	B	1570	DAN	O4-C4-C3	-4.01	100.15	109.45
2	A	1571	SIA	C8-C7-C6	-3.87	105.23	113.01
3	A	1572	DAN	C8-C7-C6	-2.90	107.17	113.01
3	B	1570	DAN	C7-C6-C5	-2.78	110.12	114.32
2	A	1571	SIA	O7-C7-C6	-2.76	103.06	109.43
3	A	1572	DAN	C7-C6-C5	-2.35	110.76	114.32
3	B	1570	DAN	C4-C3-C2	-2.12	118.02	121.60
3	A	1572	DAN	O6-C2-C3	2.66	127.97	124.12
2	A	1571	SIA	O10-C10-N5	2.67	127.31	121.86
2	A	1571	SIA	O8-C8-C9	2.84	115.85	109.22
3	A	1572	DAN	C6-O6-C2	3.83	120.72	114.79

*Continued on next page...*

*Continued from previous page...*

Mol	Chain	Res	Type	Atoms	Z	Observed(°)	Ideal(°)
3	B	1570	DAN	C6-O6-C2	4.02	121.02	114.79
2	A	1571	SIA	O7-C7-C8	4.03	118.91	108.75
6	A	1578	WIA	O1-C1-C2	5.29	114.44	108.21

There are no chirality outliers.

There are no torsion outliers.

There are no ring outliers.

2 monomers are involved in 18 short contacts:

Mol	Chain	Res	Type	Clashes	Symm-Clashes
4	A	1573	NDG	12	0
4	B	1571	NDG	6	0

## 5.7 Other polymers [i](#)

There are no such residues in this entry.

## 5.8 Polymer linkage issues [i](#)

There are no chain breaks in this entry.

## 6 Fit of model and data [i](#)

### 6.1 Protein, DNA and RNA chains [i](#)

EDS was not executed - this section will therefore be empty.

### 6.2 Non-standard residues in protein, DNA, RNA chains [i](#)

EDS was not executed - this section will therefore be empty.

### 6.3 Carbohydrates [i](#)

EDS was not executed - this section will therefore be empty.

### 6.4 Ligands [i](#)

EDS was not executed - this section will therefore be empty.

### 6.5 Other polymers [i](#)

EDS was not executed - this section will therefore be empty.