



Full wwPDB X-ray Structure Validation Report ⓘ

Feb 1, 2016 – 05:49 AM GMT

PDB ID : 2UX5
Title : X-RAY HIGH RESOLUTION STRUCTURE OF THE PHOTOSYNTHETIC
REACTION CENTER FROM RB. SPHAEROIDES AT PH 9 IN THE
CHARGE-SEPARATED STATE
Authors : Koepke, J.; Diehm, R.; Fritzsche, G.
Deposited on : 2007-03-26
Resolution : 2.21 Å(reported)

This is a Full wwPDB X-ray Structure Validation Report for a publicly released PDB entry.
We welcome your comments at validation@mail.wwpdb.org
A user guide is available at
<http://wwpdb.org/validation/2016/XrayValidationReportHelp>
with specific help available everywhere you see the ⓘ symbol.

The following versions of software and data (see [references ⓘ](#)) were used in the production of this report:

MolProbity : 4.02b-467
Mogul : 1.7 (RC4), CSD as536be (2015)
Xtriage (Phenix) : 1.9-1692
EDS : rb-20026688
Percentile statistics : 20151230.v01 (using entries in the PDB archive December 30th 2015)
Refmac : 5.8.0135
CCP4 : 6.5.0
Ideal geometry (proteins) : Engh & Huber (2001)
Ideal geometry (DNA, RNA) : Parkinson et al. (1996)
Validation Pipeline (wwPDB-VP) : trunk26865

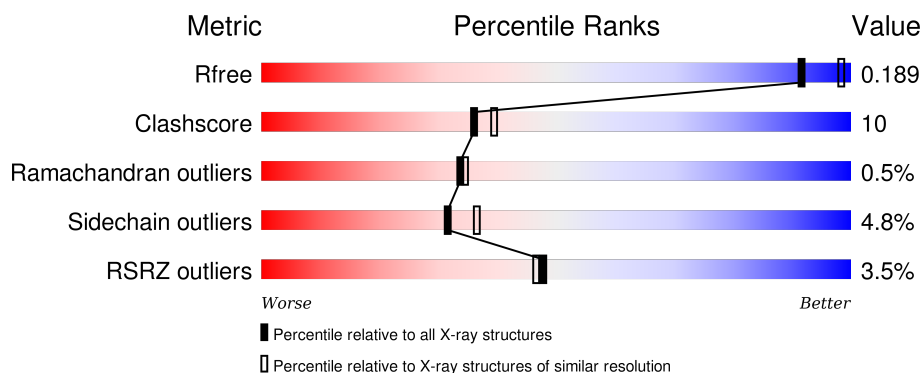
1 Overall quality at a glance

The following experimental techniques were used to determine the structure:

X-RAY DIFFRACTION

The reported resolution of this entry is 2.21 Å.

Percentile scores (ranging between 0-100) for global validation metrics of the entry are shown in the following graphic. The table shows the number of entries on which the scores are based.



Metric	Whole archive (#Entries)	Similar resolution (#Entries, resolution range(Å))
R_{free}	91344	4405 (2.24-2.20)
Clashscore	102246	5146 (2.24-2.20)
Ramachandran outliers	100387	5065 (2.24-2.20)
Sidechain outliers	100360	5066 (2.24-2.20)
RSRZ outliers	91569	4414 (2.24-2.20)

The table below summarises the geometric issues observed across the polymeric chains and their fit to the electron density. The red, orange, yellow and green segments on the lower bar indicate the fraction of residues that contain outliers for ≥ 3 , 2, 1 and 0 types of geometric quality criteria. A grey segment represents the fraction of residues that are not modelled. The numeric value for each fraction is indicated below the corresponding segment, with a dot representing fractions $\leq 5\%$. The upper red bar (where present) indicates the fraction of residues that have poor fit to the electron density. The numeric value is given above the bar.

Mol	Chain	Length	Quality of chain
1	H	260	<div> <div>4%</div> <div>79% 12% • 7%</div> </div>
2	L	281	<div> <div>2%</div> <div>86% 12% •</div> </div>
3	M	307	<div> <div>4%</div> <div>79% 18% ••</div> </div>

The following table lists non-polymeric compounds, carbohydrate monomers and non-standard residues in protein, DNA, RNA chains that are outliers for geometric or electron-density-fit criteria:

Mol	Type	Chain	Res	Chirality	Geometry	Clashes	Electron density
10	HTO	L	1289	-	-	-	X
14	CDL	M	1317	-	-	-	X
4	GOL	H	1252	-	-	-	X
4	GOL	L	1291	-	-	-	X
5	BCL	L	1282	X	-	-	-
5	BCL	L	1287	X	-	-	-
5	BCL	M	1304	X	-	-	-
5	BCL	M	1305	X	-	-	-
6	LDA	L	1283	-	-	-	X
6	LDA	L	1284	-	-	-	X
6	LDA	M	1306	-	-	-	X
6	LDA	M	1307	-	-	-	X
6	LDA	M	1308	-	-	-	X
6	LDA	M	1309	-	-	-	X
6	LDA	M	1310	-	-	-	X
6	LDA	M	1312	-	-	-	X
8	UQ2	L	1286[A]	-	-	-	X
8	UQ2	L	1286[B]	-	-	-	X

2 Entry composition [i](#)

There are 15 unique types of molecules in this entry. The entry contains 7706 atoms, of which 0 are hydrogens and 0 are deuteriums.

In the tables below, the ZeroOcc column contains the number of atoms modelled with zero occupancy, the AltConf column contains the number of residues with at least one atom in alternate conformation and the Trace column contains the number of residues modelled with at most 2 atoms.

- Molecule 1 is a protein called REACTION CENTER PROTEIN H CHAIN.

Mol	Chain	Residues	Atoms					ZeroOcc	AltConf	Trace
1	H	241	Total	C	N	O	S	0	3	1
			1846	1181	319	337	9			

- Molecule 2 is a protein called REACTION CENTER PROTEIN L CHAIN.

Mol	Chain	Residues	Atoms					ZeroOcc	AltConf	Trace
2	L	281	Total	C	N	O	S	0	0	0
			2232	1507	355	362	8			

- Molecule 3 is a protein called REACTION CENTER PROTEIN M CHAIN.

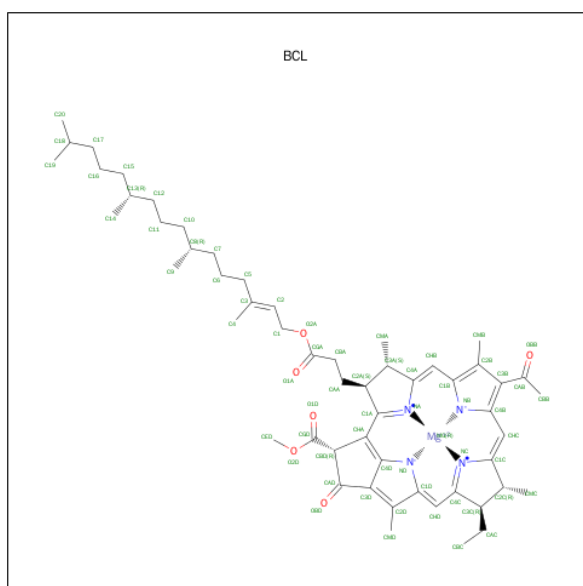
Mol	Chain	Residues	Atoms					ZeroOcc	AltConf	Trace
3	M	303	Total	C	N	O	S	0	0	1
			2409	1607	395	397	10			

- Molecule 4 is GLYCEROL (three-letter code: GOL) (formula: C₃H₈O₃).



Mol	Chain	Residues	Atoms			ZeroOcc	AltConf
4	H	1	Total	C	O	0	0
			6	3	3		
4	H	1	Total	C	O	0	0
			6	3	3		
4	H	1	Total	C	O	0	0
			6	3	3		
4	H	1	Total	C	O	0	0
			6	3	3		
4	L	1	Total	C	O	0	0
			6	3	3		
4	L	1	Total	C	O	0	0
			6	3	3		
4	M	1	Total	C	O	0	0
			6	3	3		

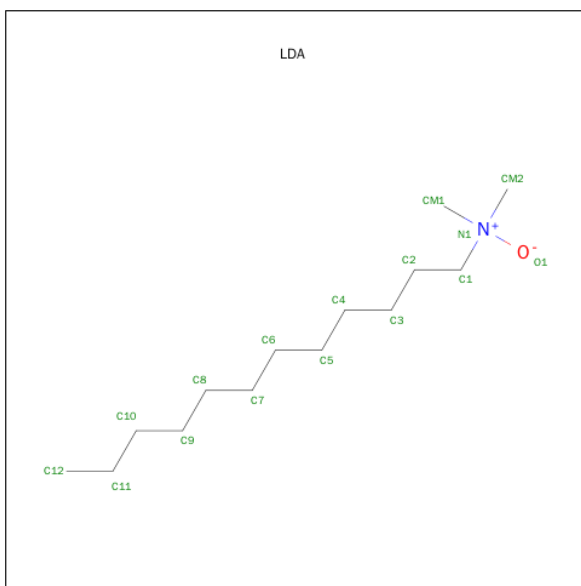
- Molecule 5 is BACTERIOCHLOROPHYLL A (three-letter code: BCL) (formula: $C_{55}H_{74}MgN_4O_6$).



Mol	Chain	Residues	Atoms				ZeroOcc	AltConf
5	L	1	Total	C	Mg	N	O	0
			66	55	1	4	6	0
5	L	1	Total	C	Mg	N	O	0
			66	55	1	4	6	0
5	M	1	Total	C	Mg	N	O	0
			66	55	1	4	6	0
5	M	1	Total	C	Mg	N	O	0
			66	55	1	4	6	0

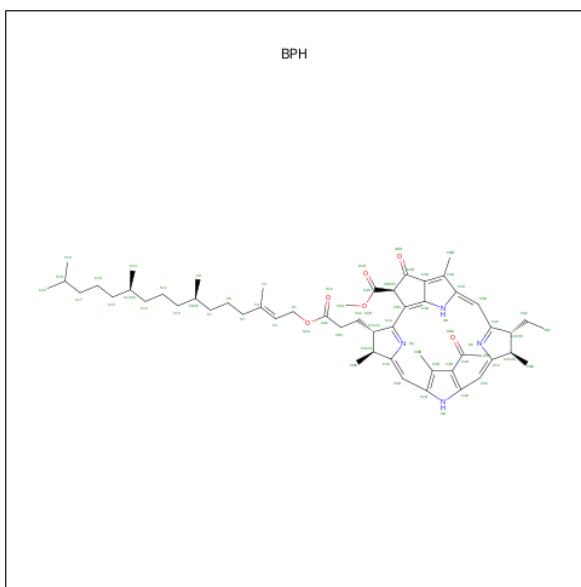
- Molecule 6 is LAURYL DIMETHYLAMINE-N-OXIDE (three-letter code: LDA) (formula:

C₁₄H₃₁NO).



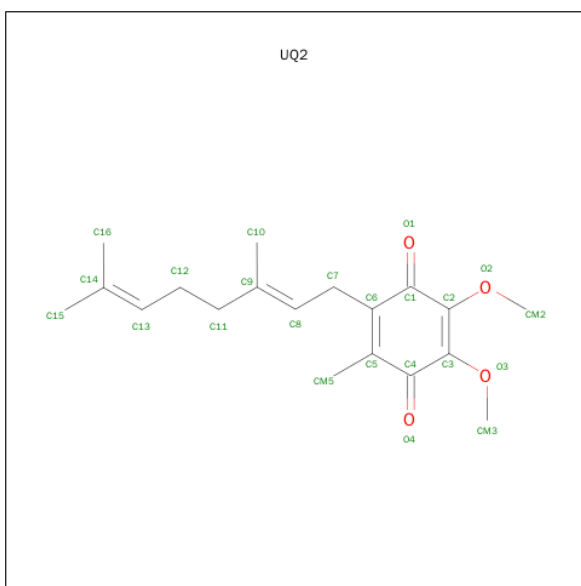
Mol	Chain	Residues	Atoms				ZeroOcc	AltConf
6	L	1	Total	C	N	O	0	0
			16	14	1	1		
6	L	1	Total	C	N	O	0	0
			16	14	1	1		
6	M	1	Total	C	N	O	0	0
			16	14	1	1		
6	M	1	Total	C	N	O	0	0
			16	14	1	1		
6	M	1	Total	C	N	O	0	0
			16	14	1	1		
6	M	1	Total	C	N	O	0	0
			16	14	1	1		
6	M	1	Total	C	N	O	0	0
			16	14	1	1		
6	M	1	Total	C	N	O	0	0
			16	14	1	1		

- Molecule 7 is BACTERIOPHEOPHYTIN A (three-letter code: BPH) (formula: C₅₅H₇₆N₄O₆).



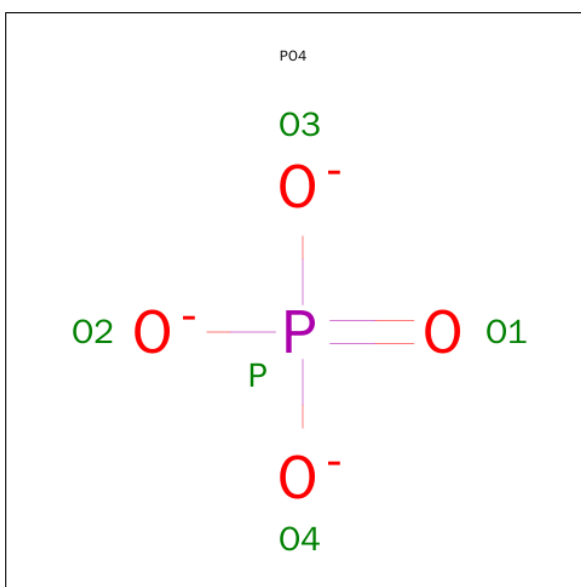
Mol	Chain	Residues	Atoms				ZeroOcc	AltConf
7	L	1	Total	C	N	O	0	0
			65	55	4	6		
7	M	1	Total	C	N	O	0	0
			65	55	4	6		

- Molecule 8 is UBIQUINONE-2 (three-letter code: UQ2) (formula: $C_{19}H_{26}O_4$).



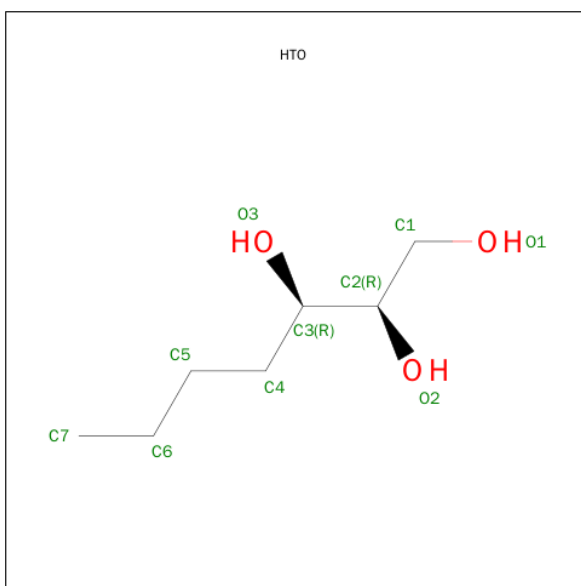
Mol	Chain	Residues	Atoms			ZeroOcc	AltConf
8	L	1	Total	C	O	0	1
			46	38	8		

- Molecule 9 is PHOSPHATE ION (three-letter code: PO4) (formula: O_4P).



Mol	Chain	Residues	Atoms			ZeroOcc	AltConf
9	L	1	Total	O	P	0	0
			5	4	1		

- Molecule 10 is HEPTANE-1,2,3-TRIOL (three-letter code: HTO) (formula: $C_7H_{16}O_3$).

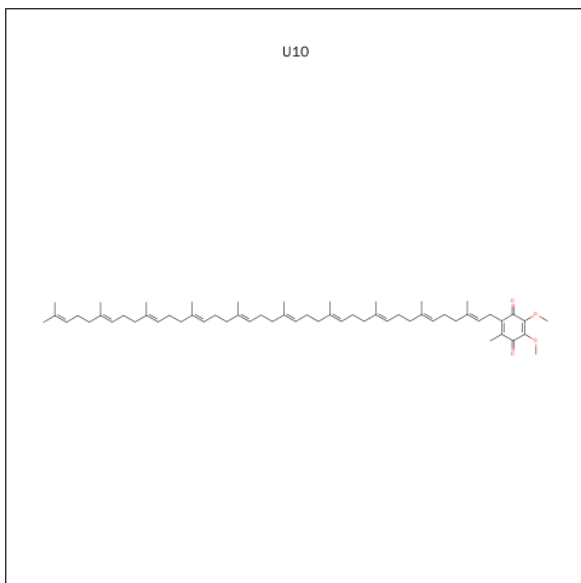


Mol	Chain	Residues	Atoms			ZeroOcc	AltConf
10	L	1	Total	C	O	0	0
			10	7	3		

- Molecule 11 is FE (III) ION (three-letter code: FE) (formula: Fe).

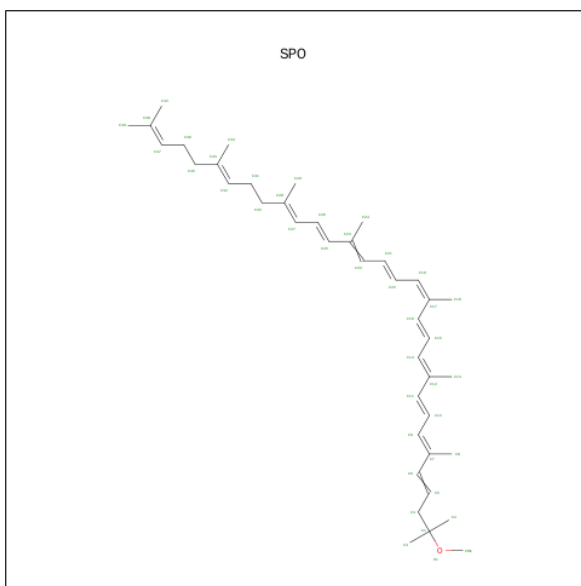
Mol	Chain	Residues	Atoms		ZeroOcc	AltConf
11	M	1	Total	Fe	0	0
			1	1		

- Molecule 12 is UBIQUINONE-10 (three-letter code: U10) (formula: $C_{59}H_{90}O_4$).



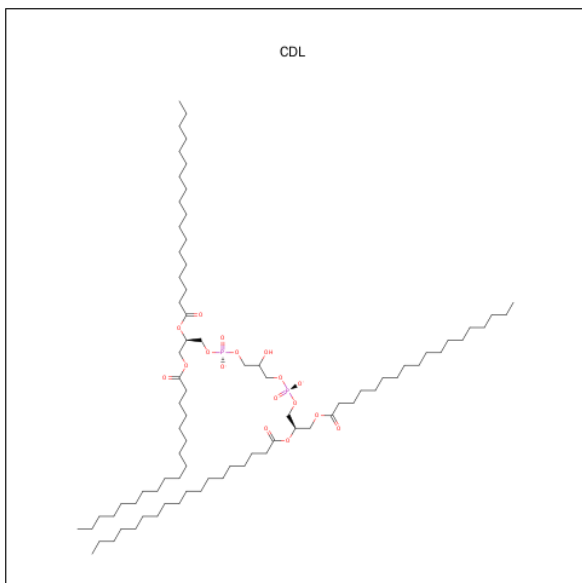
Mol	Chain	Residues	Atoms			ZeroOcc	AltConf
12	M	1	Total	C	O	0	0
			48	44	4		

- Molecule 13 is SPHEROIDENE (three-letter code: SPO) (formula: $C_{41}H_{60}O$).



Mol	Chain	Residues	Atoms			ZeroOcc	AltConf
13	M	1	Total	C	O	0	0
			42	41	1		

- Molecule 14 is CARDIOLIPIN (three-letter code: CDL) (formula: $C_{81}H_{156}O_{17}P_2$).



Mol	Chain	Residues	Atoms				ZeroOcc	AltConf
14	M	1	Total	C	O	P	0	0
			81	62	17	2		

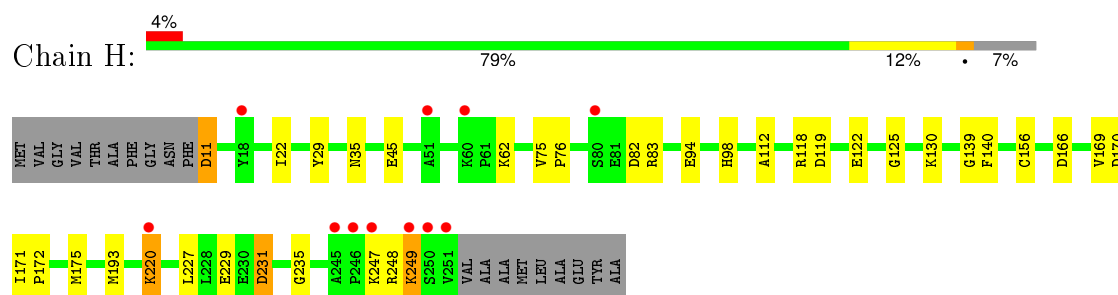
- Molecule 15 is water.

Mol	Chain	Residues	Atoms		ZeroOcc	AltConf
15	H	167	Total	O	0	0
			167	167		
15	L	115	Total	O	0	0
			115	115		
15	M	124	Total	O	0	0
			124	124		

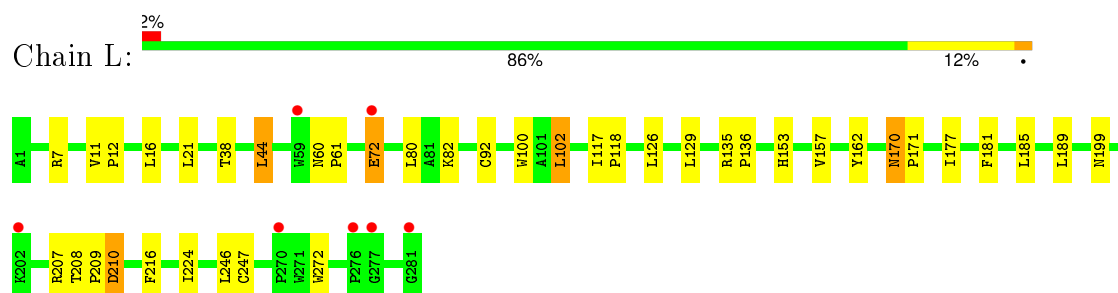
3 Residue-property plots

These plots are drawn for all protein, RNA and DNA chains in the entry. The first graphic for a chain summarises the proportions of errors displayed in the second graphic. The second graphic shows the sequence view annotated by issues in geometry and electron density. Residues are color-coded according to the number of geometric quality criteria for which they contain at least one outlier: green = 0, yellow = 1, orange = 2 and red = 3 or more. A red dot above a residue indicates a poor fit to the electron density ($RSRZ > 2$). Stretches of 2 or more consecutive residues without any outlier are shown as a green connector. Residues present in the sample, but not in the model, are shown in grey.

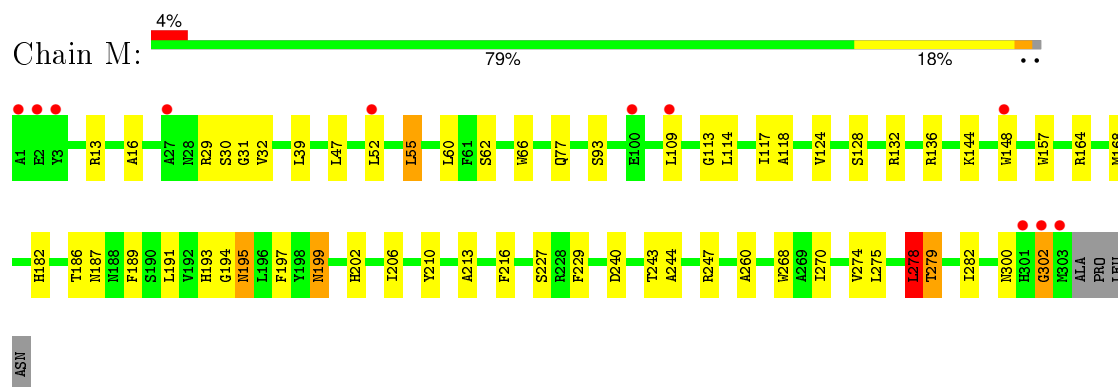
• Molecule 1: REACTION CENTER PROTEIN H CHAIN



• Molecule 2: REACTION CENTER PROTEIN L CHAIN



• Molecule 3: REACTION CENTER PROTEIN M CHAIN



4 Data and refinement statistics

Property	Value	Source
Space group	P 31 2 1	Depositor
Cell constants a, b, c, α , β , γ	139.46Å 139.46Å 184.73Å 90.00° 90.00° 120.00°	Depositor
Resolution (Å)	50.00 – 2.21 19.86 – 2.21	Depositor EDS
% Data completeness (in resolution range)	99.1 (50.00-2.21) 96.3 (19.86-2.21)	Depositor EDS
R_{merge}	0.10	Depositor
R_{sym}	(Not available)	Depositor
$\langle I/\sigma(I) \rangle$ ¹	3.37 (at 2.21Å)	Xtriage
Refinement program	REFMAC 5.1.24	Depositor
R, R_{free}	0.202 , 0.236 0.196 , 0.189	Depositor DCC
R_{free} test set	3117 reflections (3.20%)	DCC
Wilson B-factor (Å ²)	37.2	Xtriage
Anisotropy	0.245	Xtriage
Bulk solvent k_{sol} (e/Å ³), B_{sol} (Å ²)	0.35 , 53.3	EDS
Estimated twinning fraction	0.027 for -h,-k,l	Xtriage
L-test for twinning ²	$\langle L \rangle = 0.48$, $\langle L^2 \rangle = 0.31$	Xtriage
Outliers	1 of 103484 reflections (0.001%)	Xtriage
F_o, F_c correlation	0.95	EDS
Total number of atoms	7706	wwPDB-VP
Average B, all atoms (Å ²)	43.0	wwPDB-VP

Xtriage's analysis on translational NCS is as follows: *The largest off-origin peak in the Patterson function is 2.71% of the height of the origin peak. No significant pseudotranslation is detected.*

¹Intensities estimated from amplitudes.

²Theoretical values of $\langle |L| \rangle$, $\langle L^2 \rangle$ for acentric reflections are 0.5, 0.375 respectively for untwinned datasets, and 0.333, 0.2 for perfectly twinned datasets.

5 Model quality

5.1 Standard geometry

Bond lengths and bond angles in the following residue types are not validated in this section: BCL, GOL, LDA, CDL, BPH, PO4, HTO, FE, SPO, U10, UQ2

The Z score for a bond length (or angle) is the number of standard deviations the observed value is removed from the expected value. A bond length (or angle) with $|Z| > 5$ is considered an outlier worth inspection. RMSZ is the root-mean-square of all Z scores of the bond lengths (or angles).

Mol	Chain	Bond lengths		Bond angles	
		RMSZ	$\# Z > 5$	RMSZ	$\# Z > 5$
1	H	0.88	0/1906	0.92	6/2591 (0.2%)
2	L	0.91	0/2320	0.78	1/3175 (0.0%)
3	M	0.88	3/2501 (0.1%)	0.80	2/3415 (0.1%)
All	All	0.89	3/6727 (0.0%)	0.83	9/9181 (0.1%)

Chiral center outliers are detected by calculating the chiral volume of a chiral center and verifying if the center is modelled as a planar moiety or with the opposite hand. A planarity outlier is detected by checking planarity of atoms in a peptide group, atoms in a mainchain group or atoms of a sidechain that are expected to be planar.

Mol	Chain	#Chirality outliers	#Planarity outliers
3	M	0	1

All (3) bond length outliers are listed below:

Mol	Chain	Res	Type	Atoms	Z	Observed(Å)	Ideal(Å)
3	M	278	LEU	CG-CD2	7.91	1.81	1.51
3	M	213	ALA	CA-CB	6.24	1.65	1.52
3	M	227	SER	CA-CB	5.32	1.60	1.52

All (9) bond angle outliers are listed below:

Mol	Chain	Res	Type	Atoms	Z	Observed(°)	Ideal(°)
3	M	278	LEU	CA-CB-CG	-13.19	84.97	115.30
1	H	11	ASP	CB-CG-OD2	8.98	126.38	118.30
1	H	166	ASP	CB-CG-OD2	8.16	125.64	118.30
1	H	83	ARG	NE-CZ-NH2	-7.27	116.67	120.30
1	H	231	ASP	CB-CG-OD2	7.12	124.71	118.30
1	H	82	ASP	CB-CG-OD2	6.78	124.40	118.30
1	H	139	GLY	N-CA-C	-6.73	96.27	113.10

Continued on next page...

Continued from previous page...

Mol	Chain	Res	Type	Atoms	Z	Observed(°)	Ideal(°)
3	M	240	ASP	CB-CG-OD2	6.22	123.90	118.30
2	L	102	LEU	CB-CG-CD1	5.06	119.60	111.00

There are no chirality outliers.

All (1) planarity outliers are listed below:

Mol	Chain	Res	Type	Group
3	M	300	ASN	Peptide

5.2 Too-close contacts ⓘ

In the following table, the Non-H and H(model) columns list the number of non-hydrogen atoms and hydrogen atoms in the chain respectively. The H(added) column lists the number of hydrogen atoms added and optimized by MolProbity. The Clashes column lists the number of clashes within the asymmetric unit, whereas Symm-Clashes lists symmetry related clashes.

Mol	Chain	Non-H	H(model)	H(added)	Clashes	Symm-Clashes
1	H	1846	0	1861	24	0
2	L	2232	0	2187	28	0
3	M	2409	0	2321	53	0
4	H	24	0	32	4	0
4	L	12	0	16	1	0
4	M	6	0	8	1	0
5	L	132	0	148	6	0
5	M	132	0	148	20	0
6	L	32	0	62	2	0
6	M	112	0	217	8	0
7	L	65	0	76	6	0
7	M	65	0	76	14	0
8	L	46	0	52	6	0
9	L	5	0	0	0	0
10	L	10	0	16	0	0
11	M	1	0	0	0	0
12	M	48	0	63	3	0
13	M	42	0	60	2	0
14	M	81	0	86	4	0
15	H	167	0	0	3	0
15	L	115	0	0	2	0
15	M	124	0	0	2	0
All	All	7706	0	7429	141	0

The all-atom clashscore is defined as the number of clashes found per 1000 atoms (including hydrogen atoms). The all-atom clashscore for this structure is 10.

All (141) close contacts within the same asymmetric unit are listed below, sorted by their clash magnitude.

Atom-1	Atom-2	Interatomic distance (Å)	Clash overlap (Å)
3:M:278:LEU:CG	3:M:278:LEU:CD2	1.81	1.56
3:M:278:LEU:CD2	3:M:279:THR:H	1.18	1.55
3:M:278:LEU:CD2	3:M:279:THR:N	1.74	1.38
3:M:278:LEU:HA	3:M:278:LEU:CD2	1.61	1.28
3:M:278:LEU:CA	3:M:278:LEU:CD2	2.11	1.27
3:M:278:LEU:HD22	3:M:278:LEU:C	1.56	1.26
3:M:278:LEU:HD22	3:M:279:THR:N	0.79	1.10
3:M:278:LEU:HA	3:M:278:LEU:HD23	1.20	1.08
7:L:1285:BPH:HHC	7:L:1285:BPH:HBB3	1.42	0.99
3:M:275:LEU:O	3:M:278:LEU:O	1.83	0.97
3:M:278:LEU:CD2	3:M:278:LEU:C	2.20	0.94
1:H:220[A]:LYS:HD2	1:H:229:GLU:OE2	1.71	0.90
3:M:197:PHE:CZ	5:M:1305:BCL:HBB2	2.10	0.86
3:M:197:PHE:HZ	5:M:1305:BCL:HBB2	1.39	0.85
3:M:278:LEU:HD22	3:M:279:THR:CA	2.08	0.83
4:H:1252:GOL:H31	15:H:2003:HOH:O	1.78	0.83
6:M:1306:LDA:H101	6:M:1308:LDA:H121	1.62	0.80
5:M:1305:BCL:HBB3	5:M:1305:BCL:HHC	1.67	0.77
1:H:248:ARG:HA	1:H:249:LYS:HB3	1.67	0.77
3:M:189:PHE:O	3:M:193:HIS:HD2	1.70	0.75
5:M:1305:BCL:HHC	5:M:1305:BCL:CBB	2.18	0.74
7:M:1314:BPH:HBB3	7:M:1314:BPH:HHC	1.68	0.74
6:M:1306:LDA:H101	6:M:1308:LDA:C12	2.19	0.73
7:L:1285:BPH:HHC	7:L:1285:BPH:CBB	2.19	0.72
2:L:181:PHE:CD2	7:M:1314:BPH:HBB1	2.24	0.71
3:M:16:ALA:HB1	3:M:32:VAL:HG11	1.71	0.71
2:L:199:ASN:HA	4:L:1290:GOL:H31	1.76	0.68
5:M:1304:BCL:CBB	5:M:1304:BCL:HHC	2.24	0.68
5:M:1304:BCL:HBB2	5:M:1304:BCL:HHC	1.77	0.67
2:L:170:ASN:C	2:L:170:ASN:HD22	1.99	0.66
7:M:1314:BPH:HBC3	7:M:1314:BPH:HHH	1.76	0.66
5:M:1304:BCL:HBB3	5:M:1305:BCL:H41	1.76	0.66
6:M:1308:LDA:H112	12:M:1315:U10:H202	1.79	0.65
1:H:35:ASN:OD1	3:M:260:ALA:HB1	1.97	0.65
7:M:1314:BPH:CBB	7:M:1314:BPH:HHC	2.28	0.63
1:H:175:MET:HE1	15:M:2097:HOH:O	1.97	0.63
3:M:157:TRP:HB2	5:M:1305:BCL:H71	1.81	0.63

Continued on next page...

Continued from previous page...

Atom-1	Atom-2	Interatomic distance (Å)	Clash overlap (Å)
2:L:72:GLU:HG2	15:L:2042:HOH:O	1.97	0.63
2:L:224:ILE:HG22	8:L:1286[B]:UQ2:H8	1.81	0.63
3:M:77:GLN:HE22	3:M:93:SER:H	1.44	0.62
4:H:1252:GOL:C3	15:H:2003:HOH:O	2.45	0.61
1:H:119:ASP:OD1	1:H:220[A]:LYS:NZ	2.34	0.60
3:M:197:PHE:HZ	5:M:1305:BCL:CBB	2.13	0.60
2:L:181:PHE:HB3	7:M:1314:BPH:HBB2	1.84	0.60
1:H:118[A]:ARG:HD3	15:M:2102:HOH:O	2.01	0.59
7:L:1285:BPH:HBB2	3:M:210:TYR:HB3	1.84	0.59
2:L:72:GLU:CG	15:L:2042:HOH:O	2.50	0.58
1:H:169:VAL:HG23	1:H:171:ILE:HD13	1.85	0.58
3:M:55:LEU:HD22	3:M:128:SER:HB2	1.86	0.58
5:L:1282:BCL:HBB3	5:L:1287:BCL:H52	1.85	0.58
3:M:194:GLY:O	3:M:195:ASN:HB3	2.04	0.57
2:L:208:THR:HB	2:L:209:PRO:HD2	1.86	0.57
3:M:62:SER:OG	3:M:124:VAL:HG22	2.05	0.56
1:H:11:ASP:OD1	3:M:302:GLY:HA2	2.06	0.56
1:H:248:ARG:HA	1:H:249:LYS:CB	2.36	0.56
6:L:1284:LDA:H121	8:L:1286[B]:UQ2:C16	2.36	0.55
1:H:62:LYS:HE3	4:H:1252:GOL:H11	1.88	0.55
6:M:1308:LDA:HM22	6:M:1309:LDA:H11	1.89	0.55
5:L:1287:BCL:CBB	5:L:1287:BCL:HMB1	2.37	0.54
5:M:1305:BCL:HBD	5:M:1305:BCL:HAA2	1.90	0.54
3:M:229:PHE:HB2	3:M:244:ALA:HB2	1.90	0.54
1:H:171:ILE:HB	1:H:172:PRO:HD3	1.88	0.53
6:L:1284:LDA:H121	8:L:1286[B]:UQ2:H162	1.90	0.52
2:L:162:TYR:OH	3:M:187:ASN:ND2	2.43	0.52
7:M:1314:BPH:HBB3	7:M:1314:BPH:CHC	2.38	0.52
2:L:199:ASN:O	14:M:1317:CDL:HB22	2.09	0.51
3:M:202:HIS:CE1	3:M:206:ILE:HD11	2.45	0.51
5:L:1287:BCL:HBB3	5:L:1287:BCL:HMB1	1.93	0.51
3:M:189:PHE:O	3:M:193:HIS:CD2	2.58	0.51
7:M:1314:BPH:HHD	7:M:1314:BPH:CBC	2.39	0.50
5:L:1282:BCL:HHC	5:L:1282:BCL:HBB2	1.94	0.50
3:M:278:LEU:CA	3:M:278:LEU:HD23	1.99	0.49
1:H:122:GLU:HB2	1:H:227:LEU:HD21	1.94	0.49
1:H:140:PHE:HA	3:M:13:ARG:O	2.13	0.49
8:L:1286[A]:UQ2:H152	6:M:1310:LDA:H91	1.95	0.49
3:M:194:GLY:O	3:M:195:ASN:CB	2.61	0.48
7:L:1285:BPH:CHC	7:L:1285:BPH:HBB3	2.29	0.48
7:M:1314:BPH:HBC3	7:M:1314:BPH:CHD	2.44	0.48

Continued on next page...

Continued from previous page...

Atom-1	Atom-2	Interatomic distance (Å)	Clash overlap (Å)
3:M:199:ASN:C	3:M:199:ASN:HD22	2.15	0.48
2:L:135:ARG:HB3	2:L:136:PRO:HD3	1.95	0.48
7:L:1285:BPH:CHC	7:L:1285:BPH:CBB	2.89	0.48
5:M:1304:BCL:H13	5:M:1304:BCL:H102	1.64	0.48
1:H:45:GLU:HG3	1:H:94:GLU:OE1	2.14	0.47
5:M:1304:BCL:HBB2	13:M:1316:SPO:H243	1.96	0.47
3:M:197:PHE:CE1	5:M:1305:BCL:HBB2	2.50	0.47
2:L:181:PHE:HB3	7:M:1314:BPH:CBB	2.44	0.47
15:H:2003:HOH:O	14:M:1317:CDL:HA32	2.14	0.47
1:H:130:LYS:HE3	1:H:170:ASP:OD2	2.14	0.47
6:M:1309:LDA:H91	12:M:1315:U10:H23	1.97	0.47
3:M:144:LYS:N	14:M:1317:CDL:OB3	2.39	0.47
3:M:278:LEU:O	3:M:279:THR:OG1	2.30	0.46
3:M:278:LEU:CG	3:M:279:THR:N	2.75	0.46
2:L:11:VAL:HB	2:L:12:PRO:HD2	1.96	0.46
2:L:210:ASP:OD1	2:L:210:ASP:N	2.48	0.46
3:M:278:LEU:HG	3:M:278:LEU:CD2	2.22	0.46
3:M:47:LEU:HD12	6:M:1310:LDA:H62	1.97	0.45
5:M:1305:BCL:CHC	5:M:1305:BCL:CBB	2.88	0.45
3:M:109:LEU:O	3:M:114:LEU:HB2	2.16	0.45
7:L:1285:BPH:HBB1	3:M:210:TYR:CD2	2.52	0.45
2:L:72:GLU:H	2:L:72:GLU:HG3	1.50	0.45
2:L:44:LEU:HD13	2:L:92:CYS:SG	2.57	0.45
1:H:156:CYS:SG	1:H:248:ARG:HB2	2.57	0.44
8:L:1286[B]:UQ2:H71	8:L:1286[B]:UQ2:H5M1	1.61	0.44
3:M:66:TRP:HD1	3:M:118:ALA:O	2.01	0.44
3:M:186:THR:HG23	5:M:1305:BCL:HMD2	2.00	0.44
6:M:1306:LDA:H32	4:M:1318:GOL:H32	2.00	0.44
2:L:38:THR:HG21	2:L:100:TRP:HE3	1.82	0.44
1:H:22:ILE:HG23	14:M:1317:CDL:H231	1.99	0.43
1:H:125:GLY:HA2	2:L:208:THR:HG21	2.00	0.43
1:H:112:ALA:HA	1:H:235:GLY:O	2.18	0.43
2:L:189:LEU:HB3	8:L:1286[A]:UQ2:H3M3	2.00	0.43
2:L:157:VAL:HG11	5:M:1305:BCL:HBB1	2.00	0.43
2:L:177:ILE:HG12	5:L:1287:BCL:HMB3	2.00	0.43
3:M:113:GLY:O	3:M:117:ILE:HG13	2.18	0.43
7:M:1314:BPH:H13	7:M:1314:BPH:H102	1.88	0.43
1:H:98:HIS:CD2	2:L:7:ARG:HH21	2.36	0.43
3:M:268:TRP:CD1	12:M:1315:U10:H111	2.54	0.42
3:M:132:ARG:O	3:M:136:ARG:HG2	2.20	0.42
1:H:75:VAL:HA	1:H:76:PRO:C	2.40	0.42

Continued on next page...

Continued from previous page...

Atom-1	Atom-2	Interatomic distance (Å)	Clash overlap (Å)
2:L:170:ASN:HD22	2:L:171:PRO:N	2.18	0.42
5:M:1305:BCL:H61	7:M:1314:BPH:C4B	2.49	0.42
2:L:117:ILE:N	2:L:118:PRO:HD2	2.35	0.42
1:H:29:TYR:HB2	4:H:1253:GOL:H12	2.01	0.41
2:L:189:LEU:HD23	7:M:1314:BPH:HMD2	2.02	0.41
2:L:153:HIS:CD2	5:L:1282:BCL:NC	2.88	0.41
3:M:270:ILE:O	3:M:274:VAL:HG13	2.20	0.41
5:M:1304:BCL:CBB	13:M:1316:SPO:H243	2.51	0.41
1:H:171:ILE:HB	1:H:172:PRO:CD	2.51	0.41
1:H:171:ILE:N	1:H:172:PRO:HD2	2.36	0.41
3:M:30:SER:OG	3:M:31:GLY:O	2.35	0.41
7:M:1314:BPH:CBB	7:M:1314:BPH:CHC	2.97	0.41
3:M:278:LEU:HD21	3:M:282:ILE:HG13	2.03	0.41
3:M:278:LEU:CD2	3:M:278:LEU:CD1	2.86	0.41
5:M:1304:BCL:H71	5:M:1305:BCL:H202	2.03	0.41
5:M:1304:BCL:HHB	5:M:1304:BCL:H112	2.02	0.41
3:M:164:ARG:O	3:M:168:MET:HG2	2.21	0.41
3:M:243:THR:O	3:M:247:ARG:HG3	2.20	0.40
3:M:278:LEU:HD22	3:M:279:THR:H	0.59	0.40
3:M:77:GLN:NE2	3:M:93:SER:H	2.15	0.40
2:L:60:ASN:HA	2:L:61:PRO:HD3	1.94	0.40
2:L:185:LEU:HD13	7:M:1314:BPH:ND	2.37	0.40

There are no symmetry-related clashes.

5.3 Torsion angles [i](#)

5.3.1 Protein backbone [i](#)

In the following table, the Percentiles column shows the percent Ramachandran outliers of the chain as a percentile score with respect to all X-ray entries followed by that with respect to entries of similar resolution.

The Analysed column shows the number of residues for which the backbone conformation was analysed, and the total number of residues.

Mol	Chain	Analysed	Favoured	Allowed	Outliers	Percentiles	
1	H	242/260 (93%)	235 (97%)	6 (2%)	1 (0%)	39	41
2	L	279/281 (99%)	272 (98%)	7 (2%)	0	100	100
3	M	301/307 (98%)	289 (96%)	9 (3%)	3 (1%)	19	16

Continued on next page...

Continued from previous page...

Mol	Chain	Analysed	Favoured	Allowed	Outliers	Percentiles
All	All	822/848 (97%)	796 (97%)	22 (3%)	4 (0%)	34 34

All (4) Ramachandran outliers are listed below:

Mol	Chain	Res	Type
1	H	249	LYS
3	M	195	ASN
3	M	279	THR
3	M	302	GLY

5.3.2 Protein sidechains ⓘ

In the following table, the Percentiles column shows the percent sidechain outliers of the chain as a percentile score with respect to all X-ray entries followed by that with respect to entries of similar resolution.

The Analysed column shows the number of residues for which the sidechain conformation was analysed, and the total number of residues.

Mol	Chain	Analysed	Rotameric	Outliers	Percentiles
1	H	198/208 (95%)	193 (98%)	5 (2%)	55 67
2	L	220/220 (100%)	204 (93%)	16 (7%)	17 17
3	M	236/240 (98%)	225 (95%)	11 (5%)	32 38
All	All	654/668 (98%)	622 (95%)	32 (5%)	31 35

All (32) residues with a non-rotameric sidechain are listed below:

Mol	Chain	Res	Type
1	H	193	MET
1	H	220[A]	LYS
1	H	220[B]	LYS
1	H	231	ASP
1	H	247	LYS
2	L	16	LEU
2	L	21	LEU
2	L	44	LEU
2	L	72	GLU
2	L	80	LEU
2	L	82	LYS
2	L	102	LEU

Continued on next page...

Continued from previous page...

Mol	Chain	Res	Type
2	L	126	LEU
2	L	129	LEU
2	L	170	ASN
2	L	207	ARG
2	L	210	ASP
2	L	216	PHE
2	L	246	LEU
2	L	247	CYS
2	L	272	TRP
3	M	29	ARG
3	M	39	LEU
3	M	52	LEU
3	M	55	LEU
3	M	60	LEU
3	M	148	TRP
3	M	182	HIS
3	M	191	LEU
3	M	199	ASN
3	M	216	PHE
3	M	278	LEU

Some sidechains can be flipped to improve hydrogen bonding and reduce clashes. All (8) such sidechains are listed below:

Mol	Chain	Res	Type
1	H	98	HIS
2	L	159	ASN
2	L	170	ASN
2	L	264	GLN
3	M	77	GLN
3	M	187	ASN
3	M	193	HIS
3	M	199	ASN

5.3.3 RNA ⓘ

There are no RNA molecules in this entry.

5.4 Non-standard residues in protein, DNA, RNA chains ⓘ

There are no non-standard protein/DNA/RNA residues in this entry.

5.5 Carbohydrates ⓘ

There are no carbohydrates in this entry.

5.6 Ligand geometry ⓘ

Of 30 ligands modelled in this entry, 1 is monoatomic - leaving 29 for Mogul analysis.

In the following table, the Counts columns list the number of bonds (or angles) for which Mogul statistics could be retrieved, the number of bonds (or angles) that are observed in the model and the number of bonds (or angles) that are defined in the chemical component dictionary. The Link column lists molecule types, if any, to which the group is linked. The Z score for a bond length (or angle) is the number of standard deviations the observed value is removed from the expected value. A bond length (or angle) with $|Z| > 2$ is considered an outlier worth inspection. RMSZ is the root-mean-square of all Z scores of the bond lengths (or angles).

Mol	Type	Chain	Res	Link	Bond lengths			Bond angles		
					Counts	RMSZ	# $ Z > 2$	Counts	RMSZ	# $ Z > 2$
4	GOL	H	1252	-	5,5,5	0.57	0	5,5,5	1.14	0
4	GOL	H	1253	-	5,5,5	0.49	0	5,5,5	0.58	0
4	GOL	H	1254	-	5,5,5	0.32	0	5,5,5	0.36	0
4	GOL	H	1255	-	5,5,5	0.35	0	5,5,5	0.33	0
5	BCL	L	1282	2	53,74,74	2.09	5 (9%)	57,115,115	2.01	12 (21%)
6	LDA	L	1283	-	15,15,15	3.65	1 (6%)	16,17,17	0.55	0
6	LDA	L	1284	-	15,15,15	3.87	2 (13%)	16,17,17	1.09	1 (6%)
7	BPH	L	1285	-	64,70,70	3.00	19 (29%)	73,101,101	2.07	15 (20%)
8	UQ2	L	1286[A]	-	23,23,23	2.76	7 (30%)	28,31,31	1.21	2 (7%)
8	UQ2	L	1286[B]	-	23,23,23	2.65	8 (34%)	28,31,31	1.63	5 (17%)
5	BCL	L	1287	2	53,74,74	2.20	5 (9%)	57,115,115	1.97	15 (26%)
9	PO4	L	1288	-	4,4,4	0.30	0	6,6,6	0.27	0
10	HTO	L	1289	-	9,9,9	0.45	0	8,10,10	0.64	0
4	GOL	L	1290	-	5,5,5	0.38	0	5,5,5	0.88	0
4	GOL	L	1291	-	5,5,5	0.30	0	5,5,5	0.28	0
5	BCL	M	1304	3	53,74,74	2.13	6 (11%)	57,115,115	1.85	11 (19%)
5	BCL	M	1305	3	53,74,74	2.19	8 (15%)	57,115,115	2.01	12 (21%)
6	LDA	M	1306	-	15,15,15	3.88	1 (6%)	16,17,17	1.29	3 (18%)
6	LDA	M	1307	-	15,15,15	3.77	1 (6%)	16,17,17	0.55	0
6	LDA	M	1308	-	15,15,15	3.56	2 (13%)	16,17,17	0.59	0
6	LDA	M	1309	-	15,15,15	3.71	2 (13%)	16,17,17	0.49	0
6	LDA	M	1310	-	15,15,15	3.77	2 (13%)	16,17,17	0.61	0
6	LDA	M	1311	-	15,15,15	3.76	2 (13%)	16,17,17	0.60	0
6	LDA	M	1312	-	15,15,15	3.66	1 (6%)	16,17,17	0.88	1 (6%)

Mol	Type	Chain	Res	Link	Bond lengths			Bond angles		
					Counts	RMSZ	# Z > 2	Counts	RMSZ	# Z > 2
7	BPH	M	1314	-	64,70,70	2.88	18 (28%)	73,101,101	2.00	14 (19%)
12	U10	M	1315	-	48,48,63	3.02	13 (27%)	58,61,79	1.96	14 (24%)
13	SPO	M	1316	-	40,41,41	3.95	12 (30%)	45,50,50	2.29	16 (35%)
14	CDL	M	1317	-	80,80,99	2.06	17 (21%)	82,92,111	3.42	18 (21%)
4	GOL	M	1318	-	5,5,5	0.31	0	5,5,5	0.38	0

In the following table, the Chirals column lists the number of chiral outliers, the number of chiral centers analysed, the number of these observed in the model and the number defined in the chemical component dictionary. Similar counts are reported in the Torsion and Rings columns. '-' means no outliers of that kind were identified.

Mol	Type	Chain	Res	Link	Chirals	Torsions	Rings
4	GOL	H	1252	-	-	0/4/4/4	0/0/0/0
4	GOL	H	1253	-	-	0/4/4/4	0/0/0/0
4	GOL	H	1254	-	-	0/4/4/4	0/0/0/0
4	GOL	H	1255	-	-	0/4/4/4	0/0/0/0
5	BCL	L	1282	2	2/2/21/25	0/37/137/137	0/0/9/9
6	LDA	L	1283	-	-	0/13/13/13	0/0/0/0
6	LDA	L	1284	-	-	0/13/13/13	0/0/0/0
7	BPH	L	1285	-	-	0/54/105/105	0/1/6/6
8	UQ2	L	1286[A]	-	-	0/15/39/39	0/1/1/1
8	UQ2	L	1286[B]	-	-	0/15/39/39	0/1/1/1
5	BCL	L	1287	2	2/2/21/25	0/37/137/137	0/0/9/9
9	PO4	L	1288	-	-	0/0/0/0	0/0/0/0
10	HTO	L	1289	-	-	0/10/10/10	0/0/0/0
4	GOL	L	1290	-	-	0/4/4/4	0/0/0/0
4	GOL	L	1291	-	-	0/4/4/4	0/0/0/0
5	BCL	M	1304	3	2/2/21/25	0/37/137/137	0/0/9/9
5	BCL	M	1305	3	2/2/21/25	0/37/137/137	0/0/9/9
6	LDA	M	1306	-	-	0/13/13/13	0/0/0/0
6	LDA	M	1307	-	-	0/13/13/13	0/0/0/0
6	LDA	M	1308	-	-	0/13/13/13	0/0/0/0
6	LDA	M	1309	-	-	0/13/13/13	0/0/0/0
6	LDA	M	1310	-	-	0/13/13/13	0/0/0/0
6	LDA	M	1311	-	-	0/13/13/13	0/0/0/0
6	LDA	M	1312	-	-	0/13/13/13	0/0/0/0
7	BPH	M	1314	-	-	0/54/105/105	0/1/6/6
12	U10	M	1315	-	-	0/45/69/87	0/1/1/1
13	SPO	M	1316	-	-	0/47/47/47	0/0/0/0
14	CDL	M	1317	-	-	0/91/91/110	0/0/0/0
4	GOL	M	1318	-	-	0/4/4/4	0/0/0/0

All (132) bond length outliers are listed below:

Mol	Chain	Res	Type	Atoms	Z	Observed(Å)	Ideal(Å)
6	M	1306	LDA	O1-N1	-14.71	1.25	1.39
6	L	1284	LDA	O1-N1	-14.71	1.25	1.39
6	M	1307	LDA	O1-N1	-14.40	1.25	1.39
6	M	1310	LDA	O1-N1	-14.35	1.25	1.39
6	M	1311	LDA	O1-N1	-14.32	1.25	1.39
6	M	1309	LDA	O1-N1	-14.11	1.26	1.39
6	M	1312	LDA	O1-N1	-13.94	1.26	1.39
6	L	1283	LDA	O1-N1	-13.91	1.26	1.39
6	M	1308	LDA	O1-N1	-13.52	1.26	1.39
14	M	1317	CDL	C32-C31	-6.47	1.27	1.52
14	M	1317	CDL	C11-CA5	-5.71	1.33	1.50
14	M	1317	CDL	C33-C32	-5.10	1.22	1.51
8	L	1286[B]	UQ2	O2-C2	-4.93	1.24	1.37
8	L	1286[A]	UQ2	O2-C2	-4.87	1.24	1.37
8	L	1286[A]	UQ2	O3-C3	-4.39	1.25	1.37
14	M	1317	CDL	C34-C33	-4.39	1.26	1.51
8	L	1286[B]	UQ2	O3-C3	-4.30	1.25	1.37
14	M	1317	CDL	C17-C16	-4.13	1.27	1.51
7	M	1314	BPH	C3D-CAD	-4.08	1.38	1.46
14	M	1317	CDL	C16-C15	-3.99	1.28	1.51
14	M	1317	CDL	C13-C12	-3.98	1.28	1.51
14	M	1317	CDL	C20-C19	-3.84	1.29	1.51
5	L	1287	BCL	O2D-CGD	-3.82	1.23	1.33
12	M	1315	U10	O3-C3	-3.68	1.27	1.37
14	M	1317	CDL	C19-C18	-3.66	1.30	1.51
8	L	1286[B]	UQ2	C3-C4	-3.40	1.39	1.48
7	L	1285	BPH	C3D-CAD	-3.33	1.40	1.46
7	L	1285	BPH	C3D-C4D	-3.32	1.37	1.41
12	M	1315	U10	O4-C4	-3.30	1.28	1.37
7	L	1285	BPH	O2A-CGA	-3.24	1.23	1.33
5	M	1304	BCL	O2D-CGD	-3.23	1.24	1.33
12	M	1315	U10	C4-C5	-3.14	1.39	1.48
8	L	1286[A]	UQ2	C3-C4	-3.10	1.40	1.48
7	M	1314	BPH	C1B-C2B	-2.98	1.39	1.45
7	M	1314	BPH	O2D-CGD	-2.97	1.25	1.33
14	M	1317	CDL	C79-C78	-2.95	1.34	1.51
14	M	1317	CDL	C37-C36	-2.91	1.34	1.51
14	M	1317	CDL	C80-C79	-2.89	1.34	1.51
7	L	1285	BPH	O2D-CGD	-2.87	1.25	1.33
14	M	1317	CDL	C22-C21	-2.85	1.35	1.51
7	M	1314	BPH	C3D-C4D	-2.68	1.38	1.41
5	L	1282	BCL	O2A-CGA	-2.67	1.25	1.33

Continued on next page...

Continued from previous page...

Mol	Chain	Res	Type	Atoms	Z	Observed(Å)	Ideal(Å)
5	M	1305	BCL	O2D-CGD	-2.56	1.26	1.33
7	M	1314	BPH	O2A-CGA	-2.52	1.25	1.33
12	M	1315	U10	O3-C3M	-2.51	1.39	1.45
7	L	1285	BPH	C1B-C2B	-2.48	1.40	1.45
8	L	1286[B]	UQ2	C6-C1	-2.46	1.39	1.46
6	M	1308	LDA	C1-N1	-2.44	1.46	1.51
5	M	1304	BCL	O2A-CGA	-2.36	1.26	1.33
7	L	1285	BPH	C1C-NC	-2.33	1.32	1.37
6	L	1284	LDA	C1-N1	-2.30	1.47	1.51
8	L	1286[B]	UQ2	C2-C1	-2.30	1.42	1.48
6	M	1310	LDA	C1-N1	-2.24	1.47	1.51
8	L	1286[A]	UQ2	C2-C1	-2.23	1.42	1.48
5	M	1305	BCL	O2D-CED	-2.18	1.40	1.45
6	M	1311	LDA	C1-N1	-2.16	1.47	1.51
7	L	1285	BPH	CBB-CAB	-2.12	1.45	1.50
5	L	1287	BCL	C3D-CAD	-2.11	1.39	1.45
6	M	1309	LDA	C1-N1	-2.10	1.47	1.51
5	M	1305	BCL	O2A-CGA	-2.08	1.27	1.33
5	L	1282	BCL	O2D-CGD	-2.07	1.27	1.33
7	L	1285	BPH	C1A-NA	-2.04	1.32	1.37
5	M	1304	BCL	C2A-C1A	-2.02	1.48	1.52
5	M	1305	BCL	C3D-CAD	-2.01	1.40	1.45
7	M	1314	BPH	CHA-C1A	2.02	1.41	1.37
5	M	1305	BCL	C3C-C4C	2.02	1.54	1.51
12	M	1315	U10	C4-C3	2.04	1.44	1.35
8	L	1286[B]	UQ2	C6-C5	2.08	1.40	1.35
8	L	1286[A]	UQ2	C6-C5	2.57	1.41	1.35
12	M	1315	U10	C6-C1	2.74	1.41	1.35
7	M	1314	BPH	C1D-CHD	2.86	1.51	1.40
7	L	1285	BPH	C3D-C2D	3.17	1.47	1.40
7	L	1285	BPH	CHD-C4C	3.35	1.46	1.38
5	M	1305	BCL	C2-C3	3.39	1.39	1.33
13	M	1316	SPO	C21-C20	3.43	1.45	1.35
7	M	1314	BPH	CHB-C4A	3.47	1.46	1.40
7	L	1285	BPH	CHB-C4A	3.51	1.46	1.40
7	M	1314	BPH	C3D-C2D	3.69	1.49	1.40
7	L	1285	BPH	CHC-C4B	3.75	1.49	1.40
5	M	1304	BCL	C2-C3	3.76	1.40	1.33
13	M	1316	SPO	C26-C25	4.04	1.45	1.34
7	M	1314	BPH	CHD-C4C	4.04	1.48	1.38
5	L	1282	BCL	C2-C3	4.20	1.41	1.33
7	M	1314	BPH	CHC-C4B	4.24	1.51	1.40

Continued on next page...

Continued from previous page...

Mol	Chain	Res	Type	Atoms	Z	Observed(Å)	Ideal(Å)
14	M	1317	CDL	OB8-CB7	4.49	1.46	1.33
13	M	1316	SPO	C15-C16	4.52	1.46	1.34
13	M	1316	SPO	C10-C11	4.63	1.46	1.34
14	M	1317	CDL	OA6-CA5	4.64	1.48	1.34
13	M	1316	SPO	C6-C5	4.65	1.44	1.31
14	M	1317	CDL	OA8-CA7	4.75	1.47	1.33
5	L	1287	BCL	C2-C3	4.83	1.42	1.33
14	M	1317	CDL	OB6-CB5	4.85	1.48	1.34
8	L	1286[A]	UQ2	C13-C14	4.90	1.47	1.32
12	M	1315	U10	C38-C39	5.14	1.48	1.32
5	M	1305	BCL	O1A-CGA	5.17	1.38	1.22
8	L	1286[B]	UQ2	C13-C14	5.31	1.48	1.32
7	L	1285	BPH	CHC-C1C	5.47	1.47	1.36
7	M	1314	BPH	CHB-C1B	5.48	1.49	1.38
13	M	1316	SPO	C37-C38	5.56	1.49	1.32
5	L	1282	BCL	O1A-CGA	5.73	1.39	1.22
7	M	1314	BPH	CHC-C1C	5.81	1.47	1.36
5	L	1287	BCL	O1A-CGA	5.82	1.40	1.22
5	M	1304	BCL	O1A-CGA	5.87	1.40	1.22
7	M	1314	BPH	O1A-CGA	5.91	1.40	1.22
7	L	1285	BPH	O1A-CGA	6.37	1.41	1.22
7	L	1285	BPH	CHB-C1B	6.47	1.51	1.38
7	M	1314	BPH	O1D-CGD	6.63	1.37	1.21
7	L	1285	BPH	O1D-CGD	6.81	1.38	1.21
12	M	1315	U10	C18-C19	6.88	1.46	1.33
12	M	1315	U10	C23-C24	6.93	1.46	1.33
12	M	1315	U10	C8-C9	7.16	1.47	1.33
12	M	1315	U10	C28-C29	7.30	1.47	1.33
7	L	1285	BPH	C2-C3	7.35	1.47	1.33
8	L	1286[B]	UQ2	C8-C9	7.38	1.47	1.33
13	M	1316	SPO	C22-C23	7.80	1.46	1.35
7	M	1314	BPH	C2-C3	7.84	1.48	1.33
7	M	1314	BPH	OBB-CAB	7.86	1.40	1.23
13	M	1316	SPO	C32-C33	8.01	1.48	1.33
12	M	1315	U10	C13-C14	8.17	1.49	1.33
13	M	1316	SPO	C14-C12	8.17	1.46	1.35
8	L	1286[A]	UQ2	C8-C9	8.29	1.49	1.33
12	M	1315	U10	C33-C34	8.50	1.49	1.33
13	M	1316	SPO	C19-C17	9.04	1.47	1.35
13	M	1316	SPO	C9-C7	9.05	1.47	1.35
7	L	1285	BPH	OBB-CAB	9.87	1.44	1.23
7	M	1314	BPH	OBD-CAD	11.09	1.39	1.22

Continued on next page...

Continued from previous page...

Mol	Chain	Res	Type	Atoms	Z	Observed(Å)	Ideal(Å)
7	L	1285	BPH	OBD-CAD	11.65	1.40	1.22
13	M	1316	SPO	C27-C28	11.76	1.47	1.34
5	M	1304	BCL	OBD-CAD	11.85	1.40	1.22
5	L	1282	BCL	OBD-CAD	11.87	1.40	1.22
5	L	1287	BCL	OBD-CAD	12.17	1.40	1.22
5	M	1305	BCL	OBD-CAD	12.91	1.42	1.22

All (139) bond angle outliers are listed below:

Mol	Chain	Res	Type	Atoms	Z	Observed(°)	Ideal(°)
5	L	1287	BCL	CMB-C2B-C1B	-7.72	115.59	128.36
5	M	1304	BCL	CMB-C2B-C1B	-7.01	116.76	128.36
5	M	1305	BCL	CMB-C2B-C1B	-6.95	116.86	128.36
5	L	1282	BCL	CMB-C2B-C1B	-6.07	118.32	128.36
7	M	1314	BPH	OBD-CAD-C3D	-5.64	116.85	128.35
7	L	1285	BPH	O1D-CGD-CBD	-5.57	116.64	124.62
13	M	1316	SPO	C15-C14-C12	-5.45	119.32	127.20
13	M	1316	SPO	C20-C19-C17	-5.40	119.39	127.20
7	L	1285	BPH	OBD-CAD-CBD	-5.09	118.25	125.94
13	M	1316	SPO	C4-C5-C6	-4.90	117.70	124.67
7	M	1314	BPH	OBD-CAD-CBD	-4.41	119.28	125.94
13	M	1316	SPO	C10-C9-C7	-4.24	121.08	127.20
13	M	1316	SPO	C21-C22-C23	-4.23	121.09	127.20
7	M	1314	BPH	CHC-C4B-NB	-4.20	116.90	124.91
7	M	1314	BPH	O2D-CGD-O1D	-4.07	115.38	123.79
7	L	1285	BPH	OBD-CAD-C3D	-3.91	120.39	128.35
12	M	1315	U10	C17-C18-C19	-3.61	119.90	127.76
12	M	1315	U10	C30-C29-C28	-3.59	116.45	123.50
5	L	1287	BCL	OBD-CAD-CBD	-3.58	120.54	125.94
6	L	1284	LDA	O1-N1-C1	-3.56	106.27	110.27
5	L	1282	BCL	O1D-CGD-CBD	-3.52	119.57	124.62
5	M	1305	BCL	OBD-CAD-CBD	-3.30	120.96	125.94
12	M	1315	U10	C27-C28-C29	-3.25	120.70	127.76
5	L	1287	BCL	O2D-CGD-O1D	-3.14	117.30	123.79
7	L	1285	BPH	O2A-CGA-O1A	-3.10	115.48	123.49
8	L	1286[B]	UQ2	CM5-C5-C6	-3.09	117.49	124.10
12	M	1315	U10	C22-C23-C24	-3.08	121.06	127.76
7	M	1314	BPH	CAC-C3C-C2C	-3.06	106.44	114.13
7	M	1314	BPH	CMD-C2D-C3D	-2.93	119.35	125.09
12	M	1315	U10	C11-C9-C8	-2.91	115.53	121.05
5	M	1304	BCL	CAA-C2A-C3A	-2.91	104.86	113.22
5	L	1282	BCL	OBD-CAD-CBD	-2.80	121.72	125.94

Continued on next page...

Continued from previous page...

Mol	Chain	Res	Type	Atoms	Z	Observed(°)	Ideal(°)
8	L	1286[B]	UQ2	O1-C1-C6	-2.80	116.42	121.68
5	L	1282	BCL	O2D-CGD-O1D	-2.72	118.17	123.79
7	M	1314	BPH	CBA-CAA-C2A	-2.71	106.08	113.73
5	M	1305	BCL	C1D-CHD-C4C	-2.70	121.94	126.07
7	L	1285	BPH	CBB-CAB-C3B	-2.70	114.52	120.52
6	M	1306	LDA	CM2-N1-CM1	-2.67	105.82	108.83
7	L	1285	BPH	C1C-NC-C4C	-2.67	107.70	110.44
5	M	1305	BCL	O2D-CGD-O1D	-2.62	118.39	123.79
5	M	1304	BCL	O2D-CGD-O1D	-2.54	118.54	123.79
5	L	1282	BCL	O2A-CGA-O1A	-2.54	116.94	123.49
5	M	1305	BCL	C3C-C4C-CHD	-2.54	117.67	123.33
13	M	1316	SPO	C15-C16-C17	-2.53	118.87	126.32
7	M	1314	BPH	O1D-CGD-CBD	-2.53	121.00	124.62
5	M	1304	BCL	C1D-CHD-C4C	-2.52	122.22	126.07
5	M	1304	BCL	OBD-CAD-CBD	-2.50	122.16	125.94
13	M	1316	SPO	C27-C26-C25	-2.50	115.52	123.13
12	M	1315	U10	C16-C14-C13	-2.46	116.38	121.05
13	M	1316	SPO	C25-C23-C22	-2.46	115.03	118.98
7	L	1285	BPH	C1B-NB-C4B	-2.44	101.69	106.51
5	L	1282	BCL	C1D-CHD-C4C	-2.44	122.35	126.07
12	M	1315	U10	C21-C22-C23	-2.41	105.38	111.69
8	L	1286[A]	UQ2	O2-C2-C3	-2.40	113.80	124.17
13	M	1316	SPO	C14-C15-C16	-2.39	115.86	123.13
13	M	1316	SPO	C31-C32-C33	-2.36	122.63	127.76
12	M	1315	U10	C12-C13-C14	-2.35	122.64	127.76
5	L	1282	BCL	CAC-C3C-C2C	-2.35	108.22	114.13
13	M	1316	SPO	C20-C21-C22	-2.34	118.23	123.39
7	L	1285	BPH	C11-C10-C8	-2.33	107.77	115.49
5	L	1282	BCL	C5-C3-C2	-2.31	116.66	121.05
14	M	1317	CDL	OA6-CA5-OA7	-2.30	117.49	123.67
6	M	1306	LDA	O1-N1-CM2	-2.30	105.98	109.05
5	L	1287	BCL	CAA-C2A-C1A	-2.29	104.41	112.47
6	M	1312	LDA	O1-N1-CM2	-2.27	106.02	109.05
5	L	1287	BCL	C3C-C4C-CHD	-2.24	118.33	123.33
5	L	1287	BCL	CHB-C4A-NA	-2.20	121.47	124.51
7	M	1314	BPH	C3B-C2B-C1B	-2.19	102.26	105.77
5	M	1305	BCL	CAC-C3C-C2C	-2.17	108.68	114.13
5	M	1304	BCL	C3C-C4C-CHD	-2.16	118.51	123.33
5	L	1287	BCL	O2A-CGA-O1A	-2.12	118.03	123.49
5	M	1305	BCL	C7-C6-C5	-2.08	106.91	113.06
8	L	1286[B]	UQ2	O4-C4-C3	-2.02	116.43	120.79
5	L	1287	BCL	CMD-C2D-C3D	-2.01	121.15	125.09

Continued on next page...

Continued from previous page...

Mol	Chain	Res	Type	Atoms	Z	Observed(°)	Ideal(°)
14	M	1317	CDL	OB8-CB7-OB9	-2.00	118.32	123.49
5	M	1304	BCL	C3D-CAD-CBD	2.01	110.43	107.60
14	M	1317	CDL	C22-C21-C20	2.06	125.18	114.53
14	M	1317	CDL	C81-C80-C79	2.06	125.19	114.53
14	M	1317	CDL	C32-C31-CA7	2.09	121.81	113.59
5	L	1287	BCL	C11-C10-C8	2.10	122.46	115.49
7	M	1314	BPH	CED-O2D-CGD	2.15	121.03	115.99
14	M	1317	CDL	CA6-OA8-CA7	2.17	122.91	116.85
14	M	1317	CDL	C80-C79-C78	2.17	125.73	114.53
5	L	1287	BCL	CHD-C4C-NC	2.29	127.72	125.06
12	M	1315	U10	C41-C39-C40	2.30	120.30	114.64
13	M	1316	SPO	C13-C12-C11	2.30	121.93	118.10
7	L	1285	BPH	C4A-NA-C1A	2.36	110.31	108.21
12	M	1315	U10	C7-C8-C9	2.45	130.85	126.70
7	L	1285	BPH	CMB-C2B-C1B	2.47	129.08	125.06
7	L	1285	BPH	O2A-CGA-CBA	2.48	119.46	111.90
13	M	1316	SPO	C8-C7-C6	2.51	122.28	118.10
13	M	1316	SPO	C34-C33-C35	2.54	119.28	115.41
8	L	1286[A]	UQ2	C10-C9-C11	2.55	119.30	115.41
5	M	1304	BCL	CED-O2D-CGD	2.58	122.03	115.99
5	L	1287	BCL	C14-C13-C12	2.69	121.42	111.08
5	L	1287	BCL	C11-C12-C13	2.70	124.44	115.49
13	M	1316	SPO	C24-C23-C25	2.84	122.83	118.10
14	M	1317	CDL	OA8-CA7-C31	2.99	121.01	111.90
8	L	1286[B]	UQ2	CM3-O3-C3	3.01	127.32	116.61
7	M	1314	BPH	O2A-CGA-CBA	3.06	121.21	111.90
14	M	1317	CDL	OB8-CB7-C71	3.08	121.27	111.90
5	L	1282	BCL	O2A-CGA-CBA	3.17	121.56	111.90
5	M	1304	BCL	O2A-CGA-CBA	3.27	121.87	111.90
5	L	1287	BCL	O2D-CGD-CBD	3.40	115.96	111.30
7	M	1314	BPH	C2B-C1B-NB	3.43	114.87	109.73
8	L	1286[B]	UQ2	C10-C9-C11	3.45	120.68	115.41
5	M	1305	BCL	OB6-CAB-C3B	3.51	125.57	120.00
5	L	1282	BCL	C4-C3-C5	3.53	120.81	115.41
7	L	1285	BPH	C2B-C1B-NB	3.54	115.03	109.73
6	M	1306	LDA	O1-N1-C1	3.57	114.29	110.27
14	M	1317	CDL	OB6-CB5-C51	3.58	119.31	111.53
5	L	1282	BCL	CMB-C2B-C3B	3.67	132.26	125.09
13	M	1316	SPO	C29-C28-C30	3.82	121.24	115.41
5	M	1305	BCL	O2A-CGA-CBA	3.82	123.54	111.90
5	L	1287	BCL	O2A-CGA-CBA	3.82	123.55	111.90
5	M	1305	BCL	CED-O2D-CGD	3.89	125.10	115.99

Continued on next page...

Continued from previous page...

Mol	Chain	Res	Type	Atoms	Z	Observed(°)	Ideal(°)
7	L	1285	BPH	CED-O2D-CGD	4.03	125.45	115.99
5	M	1305	BCL	CMB-C2B-C3B	4.30	133.50	125.09
12	M	1315	U10	C10-C9-C11	4.30	121.98	115.41
12	M	1315	U10	C25-C24-C26	4.44	122.19	115.41
12	M	1315	U10	C15-C14-C16	4.58	122.40	115.41
5	L	1287	BCL	CMB-C2B-C3B	4.68	134.25	125.09
7	M	1314	BPH	C3C-C4C-NC	4.71	112.65	107.93
5	M	1304	BCL	CMB-C2B-C3B	4.73	134.34	125.09
12	M	1315	U10	C30-C29-C31	5.47	123.75	115.41
5	M	1305	BCL	O2D-CGD-CBD	5.49	118.83	111.30
14	M	1317	CDL	OA6-CA5-C11	5.50	123.48	111.53
7	L	1285	BPH	C3C-C4C-NC	5.56	113.50	107.93
5	M	1304	BCL	O2D-CGD-CBD	5.66	119.07	111.30
14	M	1317	CDL	C13-C12-C11	7.27	139.94	113.29
14	M	1317	CDL	C34-C33-C32	7.61	153.85	114.53
5	L	1282	BCL	O2D-CGD-CBD	7.91	122.15	111.30
14	M	1317	CDL	C35-C34-C33	8.25	157.13	114.53
7	L	1285	BPH	O2D-CGD-CBD	8.55	123.04	111.30
7	M	1314	BPH	O2D-CGD-CBD	8.98	123.62	111.30
14	M	1317	CDL	C20-C19-C18	9.91	165.72	114.53
14	M	1317	CDL	C12-C11-CA5	9.97	152.78	113.59
14	M	1317	CDL	C17-C16-C15	11.17	172.22	114.53
14	M	1317	CDL	C33-C32-C31	17.73	178.30	113.29

All (8) chirality outliers are listed below:

Mol	Chain	Res	Type	Atom
5	L	1287	BCL	C8
5	L	1287	BCL	C13
5	L	1282	BCL	C8
5	L	1282	BCL	C13
5	M	1304	BCL	C8
5	M	1304	BCL	C13
5	M	1305	BCL	C8
5	M	1305	BCL	C13

There are no torsion outliers.

There are no ring outliers.

20 monomers are involved in 68 short contacts:

Mol	Chain	Res	Type	Clashes	Symm-Clashes
4	H	1252	GOL	3	0
4	H	1253	GOL	1	0
5	L	1282	BCL	3	0
6	L	1284	LDA	2	0
7	L	1285	BPH	6	0
8	L	1286[A]	UQ2	2	0
8	L	1286[B]	UQ2	4	0
5	L	1287	BCL	4	0
4	L	1290	GOL	1	0
5	M	1304	BCL	8	0
5	M	1305	BCL	14	0
6	M	1306	LDA	3	0
6	M	1308	LDA	4	0
6	M	1309	LDA	2	0
6	M	1310	LDA	2	0
7	M	1314	BPH	14	0
12	M	1315	U10	3	0
13	M	1316	SPO	2	0
14	M	1317	CDL	4	0
4	M	1318	GOL	1	0

5.7 Other polymers [i](#)

There are no such residues in this entry.

5.8 Polymer linkage issues [i](#)

There are no chain breaks in this entry.

6 Fit of model and data ⓘ

6.1 Protein, DNA and RNA chains ⓘ

In the following table, the column labelled ‘#RSRZ> 2’ contains the number (and percentage) of RSRZ outliers, followed by percent RSRZ outliers for the chain as percentile scores relative to all X-ray entries and entries of similar resolution. The OWAB column contains the minimum, median, 95th percentile and maximum values of the occupancy-weighted average B-factor per residue. The column labelled ‘Q< 0.9’ lists the number of (and percentage) of residues with an average occupancy less than 0.9.

Mol	Chain	Analysed	<RSRZ>	#RSRZ>2	OWAB(Å ²)	Q<0.9
1	H	241/260 (92%)	-0.29	11 (4%) 36 35	29, 39, 51, 96	0
2	L	281/281 (100%)	-0.43	7 (2%) 61 60	27, 37, 61, 67	0
3	M	303/307 (98%)	-0.44	11 (3%) 46 45	24, 41, 63, 75	0
All	All	825/848 (97%)	-0.39	29 (3%) 48 46	24, 39, 61, 96	0

All (29) RSRZ outliers are listed below:

Mol	Chain	Res	Type	RSRZ
1	H	251	VAL	21.2
3	M	303	MET	9.1
3	M	1	ALA	9.0
1	H	250	SER	8.7
1	H	249	LYS	5.7
3	M	302	GLY	4.5
1	H	245	ALA	3.9
2	L	281	GLY	3.9
3	M	148	TRP	3.8
2	L	59	TRP	3.7
1	H	246	PRO	3.5
1	H	247	LYS	3.5
3	M	2	GLU	3.4
3	M	301	HIS	3.3
2	L	270	PRO	3.1
3	M	3	TYR	3.0
2	L	202	LYS	2.9
3	M	52	LEU	2.9
2	L	277	GLY	2.4
1	H	220[A]	LYS	2.4
2	L	72	GLU	2.3
3	M	109	LEU	2.2
1	H	51	ALA	2.2

Continued on next page...

Continued from previous page...

Mol	Chain	Res	Type	RSRZ
3	M	27	ALA	2.2
1	H	18	TYR	2.1
1	H	80	SER	2.0
3	M	100	GLU	2.0
2	L	276	PRO	2.0
1	H	60	LYS	2.0

6.2 Non-standard residues in protein, DNA, RNA chains [i](#)

There are no non-standard protein/DNA/RNA residues in this entry.

6.3 Carbohydrates [i](#)

There are no carbohydrates in this entry.

6.4 Ligands [i](#)

In the following table, the Atoms column lists the number of modelled atoms in the group and the number defined in the chemical component dictionary. LLDF column lists the quality of electron density of the group with respect to its neighbouring residues in protein, DNA or RNA chains. The B-factors column lists the minimum, median, 95th percentile and maximum values of B factors of atoms in the group. The column labelled 'Q< 0.9' lists the number of atoms with occupancy less than 0.9.

Mol	Type	Chain	Res	Atoms	RSCC	RSR	LLDF	B-factors(Å ²)	Q<0.9
6	LDA	M	1312	16/16	0.13	0.30	19.87	78,90,101,101	0
6	LDA	L	1284	16/16	0.47	0.33	12.21	109,110,114,114	0
6	LDA	L	1283	16/16	0.20	0.44	9.67	61,91,105,105	0
4	GOL	H	1252	6/6	0.81	0.29	8.77	46,60,63,65	0
6	LDA	M	1310	16/16	0.40	0.32	8.69	110,113,119,120	0
6	LDA	M	1306	16/16	0.68	0.27	8.63	54,70,75,76	0
6	LDA	M	1309	16/16	0.32	0.35	6.91	98,102,109,110	0
14	CDL	M	1317	81/100	0.55	0.41	5.78	78,104,124,124	0
6	LDA	M	1308	16/16	0.80	0.18	4.55	61,67,75,75	0
4	GOL	L	1291	6/6	0.69	0.23	4.54	94,95,96,96	0
8	UQ2	L	1286[B]	23/23	0.91	0.17	4.42	32,41,50,51	23
10	HTO	L	1289	10/10	0.77	0.26	4.08	85,87,88,89	0
8	UQ2	L	1286[A]	23/23	0.91	0.17	3.97	36,41,50,52	23
6	LDA	M	1307	16/16	0.79	0.19	3.06	66,69,80,80	0
12	U10	M	1315	48/63	0.92	0.13	1.42	26,45,73,75	0

Continued on next page...

Continued from previous page...

Mol	Type	Chain	Res	Atoms	RSCC	RSR	LLDF	B-factors(\AA^2)	Q<0.9
13	SPO	M	1316	42/42	0.86	0.17	1.36	36,49,68,72	0
4	GOL	L	1290	6/6	0.83	0.18	0.76	49,57,57,61	0
5	BCL	M	1305	66/66	0.97	0.10	0.51	22,29,59,67	0
9	PO4	L	1288	5/5	0.94	0.20	0.46	89,89,90,90	0
5	BCL	L	1287	66/66	0.97	0.12	0.44	19,30,50,57	0
7	BPH	M	1314	65/65	0.94	0.11	0.40	26,41,98,101	0
7	BPH	L	1285	65/65	0.97	0.10	-0.06	23,31,44,48	0
5	BCL	L	1282	66/66	0.97	0.08	-0.23	24,32,59,63	0
5	BCL	M	1304	66/66	0.96	0.09	-0.24	21,32,75,76	0
11	FE	M	1313	1/1	0.99	0.02	-5.08	26,26,26,26	0
4	GOL	H	1253	6/6	0.60	0.26	-	74,77,77,80	0
6	LDA	M	1311	16/16	0.25	0.44	-	95,104,112,113	0
4	GOL	M	1318	6/6	0.89	0.08	-	83,84,84,85	0
4	GOL	H	1255	6/6	0.79	0.31	-	101,101,102,102	0
4	GOL	H	1254	6/6	0.25	0.34	-	103,104,105,105	0

6.5 Other polymers [i](#)

There are no such residues in this entry.