



wwPDB X-ray Structure Validation Summary Report ⓘ

Feb 1, 2016 – 01:49 PM GMT

PDB ID : 3V3O
Title : Crystal structure of TetX2 T280A: an adaptive mutant in complex with tige-cycline
Authors : Walkiewicz, K.; Shamoo, Y.
Deposited on : 2011-12-13
Resolution : 2.90 Å(reported)

This is a wwPDB X-ray Structure Validation Summary Report for a publicly released PDB entry.
We welcome your comments at validation@mail.wwpdb.org
A user guide is available at
<http://wwpdb.org/validation/2016/XrayValidationReportHelp>
with specific help available everywhere you see the ⓘ symbol.

The following versions of software and data (see [references ⓘ](#)) were used in the production of this report:

MolProbity : 4.02b-467
Mogul : 1.7 (RC4), CSD as536be (2015)
Xtriage (Phenix) : 1.9-1692
EDS : rb-20026688
Percentile statistics : 20151230.v01 (using entries in the PDB archive December 30th 2015)
Refmac : 5.8.0135
CCP4 : 6.5.0
Ideal geometry (proteins) : Engh & Huber (2001)
Ideal geometry (DNA, RNA) : Parkinson et al. (1996)
Validation Pipeline (wwPDB-VP) : trunk26865

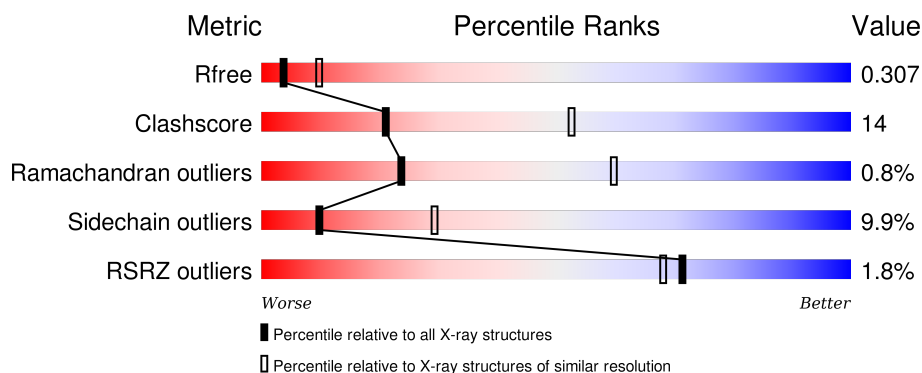
1 Overall quality at a glance ⓘ

The following experimental techniques were used to determine the structure:

X-RAY DIFFRACTION

The reported resolution of this entry is 2.90 Å.

Percentile scores (ranging between 0-100) for global validation metrics of the entry are shown in the following graphic. The table shows the number of entries on which the scores are based.



Metric	Whole archive (#Entries)	Similar resolution (#Entries, resolution range(Å))
R_{free}	91344	1451 (2.90-2.90)
Clashscore	102246	1668 (2.90-2.90)
Ramachandran outliers	100387	1630 (2.90-2.90)
Sidechain outliers	100360	1632 (2.90-2.90)
RSRZ outliers	91569	1456 (2.90-2.90)

The table below summarises the geometric issues observed across the polymeric chains and their fit to the electron density. The red, orange, yellow and green segments on the lower bar indicate the fraction of residues that contain outliers for ≥ 3 , 2, 1 and 0 types of geometric quality criteria. A grey segment represents the fraction of residues that are not modelled. The numeric value for each fraction is indicated below the corresponding segment, with a dot representing fractions $\leq 5\%$. The upper red bar (where present) indicates the fraction of residues that have poor fit to the electron density. The numeric value is given above the bar.

Mol	Chain	Length	Quality of chain
1	A	378	<div> <div>2%</div> <div>64% 28% 5%</div> </div>
1	B	378	<div> <div>2%</div> <div>63% 30%</div> </div>
1	C	378	<div> <div>2%</div> <div>59% 33%</div> </div>
1	D	378	<div> <div>4%</div> <div>63% 28% 5%</div> </div>

The following table lists non-polymeric compounds, carbohydrate monomers and non-standard

residues in protein, DNA, RNA chains that are outliers for geometric or electron-density-fit criteria:

Mol	Type	Chain	Res	Chirality	Geometry	Clashes	Electron density
4	T1C	B	405	-	-	-	X

2 Entry composition

There are 5 unique types of molecules in this entry. The entry contains 11946 atoms, of which 0 are hydrogens and 0 are deuteriums.

In the tables below, the ZeroOcc column contains the number of atoms modelled with zero occupancy, the AltConf column contains the number of residues with at least one atom in alternate conformation and the Trace column contains the number of residues modelled with at most 2 atoms.

- Molecule 1 is a protein called TetX2 protein.

Mol	Chain	Residues	Atoms					ZeroOcc	AltConf	Trace
1	A	368	Total	C	N	O	S	0	0	0
			2895	1837	497	549	12			
1	B	365	Total	C	N	O	S	0	0	0
			2878	1826	492	548	12			
1	C	364	Total	C	N	O	S	0	0	0
			2866	1817	490	547	12			
1	D	364	Total	C	N	O	S	0	0	0
			2874	1823	492	547	12			

There are 12 discrepancies between the modelled and reference sequences:

Chain	Residue	Modelled	Actual	Comment	Reference
A	94	LYS	GLU	ENGINEERED MUTATION	UNP Q93L51
A	266	LYS	GLU	ENGINEERED MUTATION	UNP Q93L51
A	280	ALA	THR	ENGINEERED MUTATION	UNP Q93L51
B	94	LYS	GLU	ENGINEERED MUTATION	UNP Q93L51
B	266	LYS	GLU	ENGINEERED MUTATION	UNP Q93L51
B	280	ALA	THR	ENGINEERED MUTATION	UNP Q93L51
C	94	LYS	GLU	ENGINEERED MUTATION	UNP Q93L51
C	266	LYS	GLU	ENGINEERED MUTATION	UNP Q93L51
C	280	ALA	THR	ENGINEERED MUTATION	UNP Q93L51
D	94	LYS	GLU	ENGINEERED MUTATION	UNP Q93L51
D	266	LYS	GLU	ENGINEERED MUTATION	UNP Q93L51
D	280	ALA	THR	ENGINEERED MUTATION	UNP Q93L51

- Molecule 2 is SULFATE ION (three-letter code: SO4) (formula: O₄S).



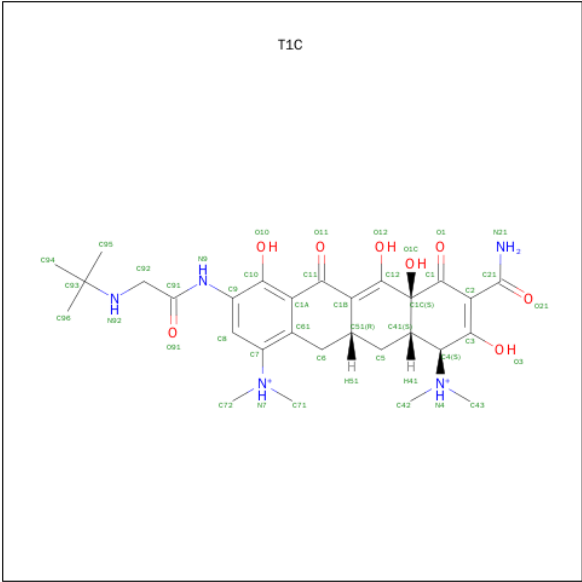
Mol	Chain	Residues	Atoms			ZeroOcc	AltConf
2	A	1	Total	O	S	0	0
			5	4	1		
2	A	1	Total	O	S	0	0
			5	4	1		
2	B	1	Total	O	S	0	0
			5	4	1		
2	B	1	Total	O	S	0	0
			5	4	1		
2	B	1	Total	O	S	0	0
			5	4	1		

- Molecule 3 is FLAVIN-ADENINE DINUCLEOTIDE (three-letter code: FAD) (formula: $C_{27}H_{33}N_9O_{15}P_2$).



Mol	Chain	Residues	Atoms					ZeroOcc	AltConf
3	A	1	Total	C	N	O	P	0	0
			53	27	9	15	2		
3	B	1	Total	C	N	O	P	0	0
			53	27	9	15	2		
3	C	1	Total	C	N	O	P	0	0
			53	27	9	15	2		
3	D	1	Total	C	N	O	P	0	0
			53	27	9	15	2		

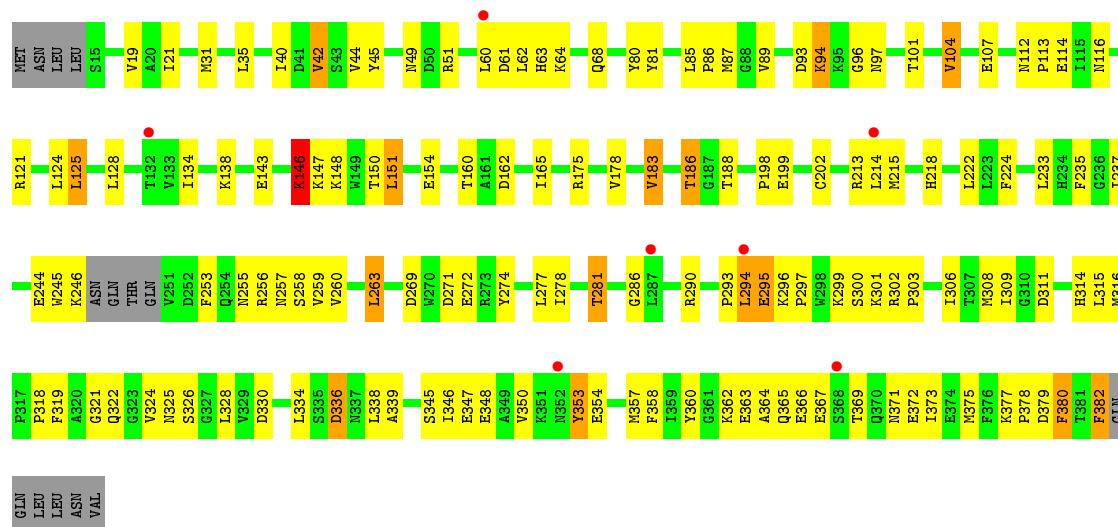
- Molecule 4 is TIGECYCLINE (three-letter code: T1C) (formula: C₂₉H₄₁N₅O₈).



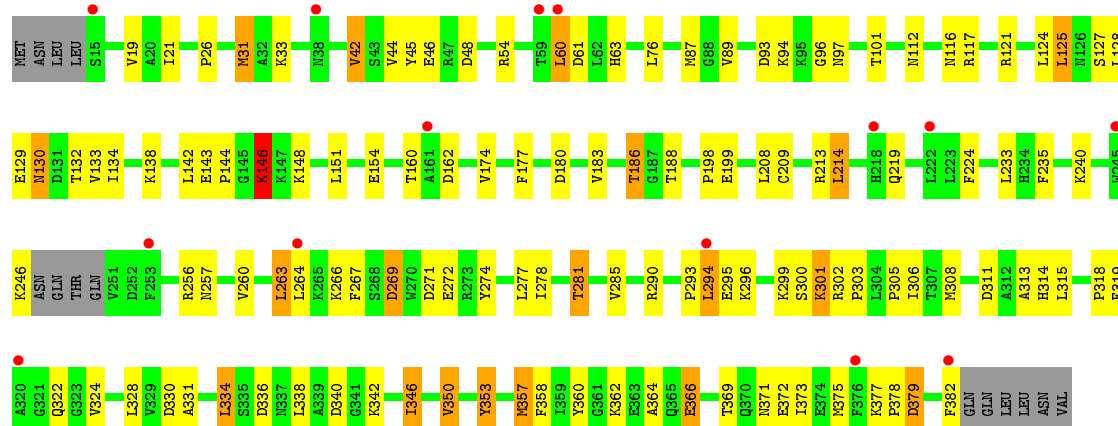
Mol	Chain	Residues	Atoms				ZeroOcc	AltConf
4	A	1	Total	C	N	O	0	0
			42	29	5	8		
4	B	1	Total	C	N	O	0	0
			42	29	5	8		
4	C	1	Total	C	N	O	0	0
			42	29	5	8		
4	D	1	Total	C	N	O	0	0
			42	29	5	8		

- Molecule 5 is water.

Mol	Chain	Residues	Atoms		ZeroOcc	AltConf
5	A	7	Total	O	0	0
			7	7		
5	B	9	Total	O	0	0
			9	9		
5	C	2	Total	O	0	0
			2	2		
5	D	5	Total	O	0	0
			5	5		



• Molecule 1: TetX2 protein



4 Data and refinement statistics

Property	Value	Source
Space group	P 1	Depositor
Cell constants a, b, c, α , β , γ	68.13Å 80.08Å 87.24Å 111.02° 89.97° 92.97°	Depositor
Resolution (Å)	48.95 – 2.90 48.95 – 2.90	Depositor EDS
% Data completeness (in resolution range)	93.4 (48.95-2.90) 82.7 (48.95-2.90)	Depositor EDS
R_{merge}	0.11	Depositor
R_{sym}	(Not available)	Depositor
$\langle I/\sigma(I) \rangle$ ¹	2.16 (at 2.91Å)	Xtriage
Refinement program	PHENIX (phenix.refine: 1.8.1_1168)	Depositor
R, R_{free}	0.232 , 0.297 0.239 , 0.307	Depositor DCC
R_{free} test set	1824 reflections (5.38%)	DCC
Wilson B-factor (Å ²)	58.8	Xtriage
Anisotropy	0.453	Xtriage
Bulk solvent k_{sol} (e/Å ³), B_{sol} (Å ²)	0.34 , 41.4	EDS
Estimated twinning fraction	No twinning to report.	Xtriage
L-test for twinning ²	$\langle L \rangle = 0.49$, $\langle L^2 \rangle = 0.32$	Xtriage
Outliers	0 of 36868 reflections	Xtriage
F_o, F_c correlation	0.91	EDS
Total number of atoms	11946	wwPDB-VP
Average B, all atoms (Å ²)	67.0	wwPDB-VP

Xtriage's analysis on translational NCS is as follows: *The largest off-origin peak in the Patterson function is 5.39% of the height of the origin peak. No significant pseudotranslation is detected.*

¹Intensities estimated from amplitudes.

²Theoretical values of $\langle |L| \rangle$, $\langle L^2 \rangle$ for acentric reflections are 0.5, 0.375 respectively for untwinned datasets, and 0.333, 0.2 for perfectly twinned datasets.

5 Model quality [i](#)

5.1 Standard geometry [i](#)

Bond lengths and bond angles in the following residue types are not validated in this section: SO4, FAD, T1C

The Z score for a bond length (or angle) is the number of standard deviations the observed value is removed from the expected value. A bond length (or angle) with $|Z| > 5$ is considered an outlier worth inspection. RMSZ is the root-mean-square of all Z scores of the bond lengths (or angles).

Mol	Chain	Bond lengths		Bond angles	
		RMSZ	$\# Z > 5$	RMSZ	$\# Z > 5$
1	A	0.54	0/2953	0.70	0/3991
1	B	0.53	0/2936	0.69	0/3967
1	C	0.46	0/2924	0.66	0/3952
1	D	0.46	0/2932	0.64	0/3960
All	All	0.50	0/11745	0.67	0/15870

There are no bond length outliers.

There are no bond angle outliers.

There are no chirality outliers.

There are no planarity outliers.

5.2 Too-close contacts [i](#)

In the following table, the Non-H and H(model) columns list the number of non-hydrogen atoms and hydrogen atoms in the chain respectively. The H(added) column lists the number of hydrogen atoms added and optimized by MolProbity. The Clashes column lists the number of clashes within the asymmetric unit, whereas Symm-Clashes lists symmetry related clashes.

Mol	Chain	Non-H	H(model)	H(added)	Clashes	Symm-Clashes
1	A	2895	0	2859	83	0
1	B	2878	0	2842	80	0
1	C	2866	0	2820	88	0
1	D	2874	0	2842	83	0
2	A	10	0	0	0	0
2	B	20	0	0	0	0
3	A	53	0	31	2	0
3	B	53	0	31	2	0
3	C	53	0	31	2	0

Continued on next page...

Continued from previous page...

Mol	Chain	Non-H	H(model)	H(added)	Clashes	Symm-Clashes
3	D	53	0	31	2	0
4	A	42	0	41	7	0
4	B	42	0	40	2	0
4	C	42	0	41	1	0
4	D	42	0	41	4	0
5	A	7	0	0	0	0
5	B	9	0	0	2	0
5	C	2	0	0	0	0
5	D	5	0	0	1	0
All	All	11946	0	11650	338	0

The all-atom clashscore is defined as the number of clashes found per 1000 atoms (including hydrogen atoms). The all-atom clashscore for this structure is 14.

The worst 5 of 338 close contacts within the same asymmetric unit are listed below, sorted by their clash magnitude.

Atom-1	Atom-2	Interatomic distance (Å)	Clash overlap (Å)
1:B:61:ASP:HB2	1:B:112:ASN:HB2	1.52	0.92
1:B:330:ASP:HB2	1:B:353:TYR:HE1	1.41	0.85
1:B:78:GLN:HG2	1:C:64:LYS:HB3	1.61	0.83
1:B:186:THR:HG22	1:B:188:THR:H	1.45	0.80
1:D:293:PRO:HB2	1:D:295:GLU:HG2	1.62	0.80

There are no symmetry-related clashes.

5.3 Torsion angles [i](#)

5.3.1 Protein backbone [i](#)

In the following table, the Percentiles column shows the percent Ramachandran outliers of the chain as a percentile score with respect to all X-ray entries followed by that with respect to entries of similar resolution.

The Analysed column shows the number of residues for which the backbone conformation was analysed, and the total number of residues.

Mol	Chain	Analysed	Favoured	Allowed	Outliers	Percentiles	
1	A	364/378 (96%)	337 (93%)	24 (7%)	3 (1%)	24	60
1	B	361/378 (96%)	333 (92%)	24 (7%)	4 (1%)	17	51

Continued on next page...

Continued from previous page...

Mol	Chain	Analysed	Favoured	Allowed	Outliers	Percentiles
1	C	360/378 (95%)	329 (91%)	28 (8%)	3 (1%)	24 60
1	D	360/378 (95%)	334 (93%)	24 (7%)	2 (1%)	30 67
All	All	1445/1512 (96%)	1333 (92%)	100 (7%)	12 (1%)	24 60

5 of 12 Ramachandran outliers are listed below:

Mol	Chain	Res	Type
1	A	146	LYS
1	A	379	ASP
1	B	146	LYS
1	C	146	LYS
1	C	378	PRO

5.3.2 Protein sidechains ⓘ

In the following table, the Percentiles column shows the percent sidechain outliers of the chain as a percentile score with respect to all X-ray entries followed by that with respect to entries of similar resolution.

The Analysed column shows the number of residues for which the sidechain conformation was analysed, and the total number of residues.

Mol	Chain	Analysed	Rotameric	Outliers	Percentiles
1	A	314/327 (96%)	281 (90%)	33 (10%)	8 25
1	B	313/327 (96%)	286 (91%)	27 (9%)	13 36
1	C	311/327 (95%)	280 (90%)	31 (10%)	9 28
1	D	313/327 (96%)	280 (90%)	33 (10%)	8 25
All	All	1251/1308 (96%)	1127 (90%)	124 (10%)	10 29

5 of 124 residues with a non-rotameric sidechain are listed below:

Mol	Chain	Res	Type
1	B	353	TYR
1	C	125	LEU
1	D	311	ASP
1	B	357	MET
1	C	51	ARG

Some sidechains can be flipped to improve hydrogen bonding and reduce clashes. All (3) such sidechains are listed below:

Mol	Chain	Res	Type
1	C	218	HIS
1	C	325	ASN
1	D	219	GLN

5.3.3 RNA [i](#)

There are no RNA molecules in this entry.

5.4 Non-standard residues in protein, DNA, RNA chains [i](#)

There are no non-standard protein/DNA/RNA residues in this entry.

5.5 Carbohydrates [i](#)

There are no carbohydrates in this entry.

5.6 Ligand geometry [i](#)

14 ligands are modelled in this entry.

In the following table, the Counts columns list the number of bonds (or angles) for which Mogul statistics could be retrieved, the number of bonds (or angles) that are observed in the model and the number of bonds (or angles) that are defined in the chemical component dictionary. The Link column lists molecule types, if any, to which the group is linked. The Z score for a bond length (or angle) is the number of standard deviations the observed value is removed from the expected value. A bond length (or angle) with $|Z| > 2$ is considered an outlier worth inspection. RMSZ is the root-mean-square of all Z scores of the bond lengths (or angles).

Mol	Type	Chain	Res	Link	Bond lengths			Bond angles		
					Counts	RMSZ	# $ Z > 2$	Counts	RMSZ	# $ Z > 2$
2	SO4	A	401	-	4,4,4	0.10	0	6,6,6	0.19	0
2	SO4	A	402	-	4,4,4	0.08	0	6,6,6	0.16	0
3	FAD	A	403	-	48,58,58	1.75	9 (18%)	54,89,89	2.82	20 (37%)
4	T1C	A	404	-	44,45,45	3.46	22 (50%)	48,72,72	2.51	15 (31%)
2	SO4	B	401	-	4,4,4	0.07	0	6,6,6	0.19	0
2	SO4	B	402	-	4,4,4	0.15	0	6,6,6	0.46	0
3	FAD	B	403	-	48,58,58	1.67	8 (16%)	54,89,89	2.35	14 (25%)
2	SO4	B	404	-	4,4,4	0.07	0	6,6,6	0.17	0
4	T1C	B	405	-	44,45,45	3.41	22 (50%)	48,72,72	2.26	16 (33%)
2	SO4	B	406	-	4,4,4	0.14	0	6,6,6	0.12	0
4	T1C	C	401	-	44,45,45	3.29	19 (43%)	48,72,72	1.85	12 (25%)

Mol	Type	Chain	Res	Link	Bond lengths			Bond angles		
					Counts	RMSZ	# Z > 2	Counts	RMSZ	# Z > 2
3	FAD	C	402	-	48,58,58	1.75	7 (14%)	54,89,89	2.84	14 (25%)
4	T1C	D	401	-	44,45,45	3.33	20 (45%)	48,72,72	1.89	15 (31%)
3	FAD	D	402	-	48,58,58	1.74	7 (14%)	54,89,89	2.97	17 (31%)

In the following table, the Chirals column lists the number of chiral outliers, the number of chiral centers analysed, the number of these observed in the model and the number defined in the chemical component dictionary. Similar counts are reported in the Torsion and Rings columns. '-' means no outliers of that kind were identified.

Mol	Type	Chain	Res	Link	Chirals	Torsions	Rings
2	SO4	A	401	-	-	0/0/0/0	0/0/0/0
2	SO4	A	402	-	-	0/0/0/0	0/0/0/0
3	FAD	A	403	-	-	0/30/50/50	0/6/6/6
4	T1C	A	404	-	-	0/22/80/80	0/4/4/4
2	SO4	B	401	-	-	0/0/0/0	0/0/0/0
2	SO4	B	402	-	-	0/0/0/0	0/0/0/0
3	FAD	B	403	-	-	0/30/50/50	0/6/6/6
2	SO4	B	404	-	-	0/0/0/0	0/0/0/0
4	T1C	B	405	-	-	0/22/80/80	0/4/4/4
2	SO4	B	406	-	-	0/0/0/0	0/0/0/0
4	T1C	C	401	-	-	0/22/80/80	0/4/4/4
3	FAD	C	402	-	-	0/30/50/50	0/6/6/6
4	T1C	D	401	-	-	0/22/80/80	0/4/4/4
3	FAD	D	402	-	-	0/30/50/50	0/6/6/6

The worst 5 of 114 bond length outliers are listed below:

Mol	Chain	Res	Type	Atoms	Z	Observed(Å)	Ideal(Å)
3	B	403	FAD	C2B-C3B	-3.95	1.42	1.53
3	C	402	FAD	C2B-C3B	-3.93	1.42	1.53
3	D	402	FAD	C2B-C3B	-3.61	1.43	1.53
4	B	405	T1C	O1C-C1C	-3.58	1.36	1.42
3	A	403	FAD	C2B-C3B	-3.48	1.43	1.53

The worst 5 of 123 bond angle outliers are listed below:

Mol	Chain	Res	Type	Atoms	Z	Observed(°)	Ideal(°)
3	D	402	FAD	N3A-C2A-N1A	-10.50	120.85	128.89
3	C	402	FAD	N3A-C2A-N1A	-9.24	121.82	128.89
3	C	402	FAD	O3P-P-O5'	-8.87	79.40	102.94
3	A	403	FAD	O3P-P-O5'	-8.69	79.87	102.94

Continued on next page...

Continued from previous page...

Mol	Chain	Res	Type	Atoms	Z	Observed(°)	Ideal(°)
3	A	403	FAD	N3A-C2A-N1A	-8.51	122.38	128.89

There are no chirality outliers.

There are no torsion outliers.

There are no ring outliers.

8 monomers are involved in 22 short contacts:

Mol	Chain	Res	Type	Clashes	Symm-Clashes
3	A	403	FAD	2	0
4	A	404	T1C	7	0
3	B	403	FAD	2	0
4	B	405	T1C	2	0
4	C	401	T1C	1	0
3	C	402	FAD	2	0
4	D	401	T1C	4	0
3	D	402	FAD	2	0

5.7 Other polymers [i](#)

There are no such residues in this entry.

5.8 Polymer linkage issues [i](#)

There are no chain breaks in this entry.

6 Fit of model and data [i](#)

6.1 Protein, DNA and RNA chains [i](#)

In the following table, the column labelled ‘#RSRZ> 2’ contains the number (and percentage) of RSRZ outliers, followed by percent RSRZ outliers for the chain as percentile scores relative to all X-ray entries and entries of similar resolution. The OWAB column contains the minimum, median, 95th percentile and maximum values of the occupancy-weighted average B-factor per residue. The column labelled ‘Q< 0.9’ lists the number of (and percentage) of residues with an average occupancy less than 0.9.

Mol	Chain	Analysed	<RSRZ>	#RSRZ>2	OWAB(Å ²)	Q<0.9
1	A	368/378 (97%)	0.07	3 (0%) 87 86	37, 58, 86, 113	0
1	B	365/378 (96%)	0.13	2 (0%) 91 90	37, 59, 88, 103	0
1	C	364/378 (96%)	0.27	7 (1%) 70 66	45, 73, 100, 112	0
1	D	364/378 (96%)	0.29	14 (3%) 44 37	46, 74, 101, 114	0
All	All	1461/1512 (96%)	0.19	26 (1%) 71 68	37, 66, 97, 114	0

The worst 5 of 26 RSRZ outliers are listed below:

Mol	Chain	Res	Type	RSRZ
1	C	294	LEU	4.5
1	D	60	LEU	4.2
1	D	245	TRP	3.3
1	C	60	LEU	3.3
1	D	264	LEU	3.0

6.2 Non-standard residues in protein, DNA, RNA chains [i](#)

There are no non-standard protein/DNA/RNA residues in this entry.

6.3 Carbohydrates [i](#)

There are no carbohydrates in this entry.

6.4 Ligands [i](#)

In the following table, the Atoms column lists the number of modelled atoms in the group and the number defined in the chemical component dictionary. LLDF column lists the quality of electron density of the group with respect to its neighbouring residues in protein, DNA or RNA chains. The B-factors column lists the minimum, median, 95th percentile and maximum values of B factors

of atoms in the group. The column labelled 'Q< 0.9' lists the number of atoms with occupancy less than 0.9.

Mol	Type	Chain	Res	Atoms	RSCC	RSR	LLDF	B-factors(Å ²)	Q<0.9
4	T1C	B	405	42/42	0.81	0.32	2.26	41,77,98,109	0
4	T1C	D	401	42/42	0.76	0.34	1.48	62,90,114,120	0
4	T1C	C	401	42/42	0.84	0.29	1.29	62,86,114,117	0
4	T1C	A	404	42/42	0.84	0.23	0.73	44,65,81,87	0
3	FAD	D	402	53/53	0.94	0.20	-0.39	42,56,77,83	0
3	FAD	B	403	53/53	0.96	0.19	-0.51	30,46,61,75	0
3	FAD	C	402	53/53	0.95	0.19	-0.54	41,58,72,77	0
2	SO4	B	402	5/5	0.92	0.17	-0.70	63,66,72,85	0
3	FAD	A	403	53/53	0.97	0.18	-0.73	32,47,62,68	0
2	SO4	A	402	5/5	0.93	0.11	-1.70	68,70,85,88	0
2	SO4	B	404	5/5	0.92	0.11	-	79,79,87,95	0
2	SO4	A	401	5/5	0.97	0.08	-	61,71,78,93	0
2	SO4	B	401	5/5	0.96	0.10	-	74,85,87,93	0
2	SO4	B	406	5/5	0.98	0.09	-	58,64,81,86	0

6.5 Other polymers

There are no such residues in this entry.