



# Full wwPDB X-ray Structure Validation Report ⓘ

Feb 1, 2016 – 09:10 PM GMT

PDB ID : 4V3W  
Title : Structure of rat neuronal nitric oxide synthase heme domain in complex with  
2-(2-(1H-imidazol-1-yl)pyrimidin-4-yl)-N-(3- fluorophenethyl)ethan-1-amine  
Authors : Li, H.; Poulos, T.L.  
Deposited on : 2014-10-20  
Resolution : 2.13 Å(reported)

This is a Full wwPDB X-ray Structure Validation Report for a publicly released PDB entry.  
We welcome your comments at [validation@mail.wwpdb.org](mailto:validation@mail.wwpdb.org)  
A user guide is available at  
<http://wwpdb.org/validation/2016/XrayValidationReportHelp>  
with specific help available everywhere you see the ⓘ symbol.

---

The following versions of software and data (see [references ⓘ](#)) were used in the production of this report:

MolProbity : 4.02b-467  
Mogul : 1.7 (RC4), CSD as536be (2015)  
Xtriage (Phenix) : 1.9-1692  
EDS : rb-20026688  
Percentile statistics : 20151230.v01 (using entries in the PDB archive December 30th 2015)  
Refmac : 5.8.0135  
CCP4 : 6.5.0  
Ideal geometry (proteins) : Engh & Huber (2001)  
Ideal geometry (DNA, RNA) : Parkinson et al. (1996)  
Validation Pipeline (wwPDB-VP) : trunk26865

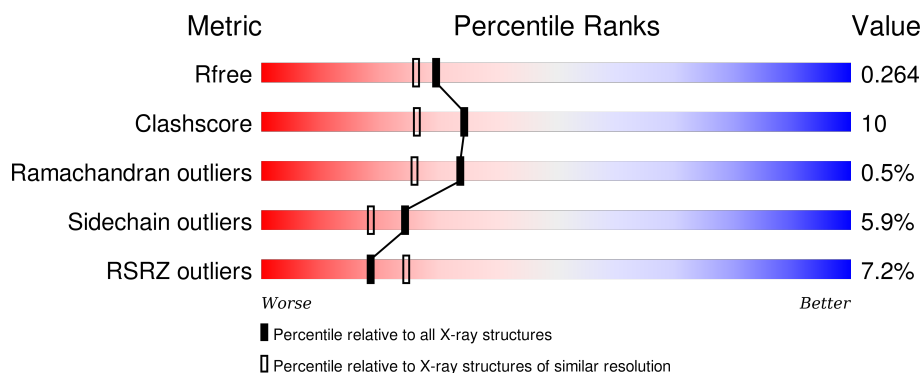
# 1 Overall quality at a glance

The following experimental techniques were used to determine the structure:

## *X-RAY DIFFRACTION*

The reported resolution of this entry is 2.13 Å.

Percentile scores (ranging between 0-100) for global validation metrics of the entry are shown in the following graphic. The table shows the number of entries on which the scores are based.



Metric	Whole archive (#Entries)	Similar resolution (#Entries, resolution range(Å))
$R_{free}$	91344	1693 (2.16-2.12)
Clashscore	102246	1824 (2.16-2.12)
Ramachandran outliers	100387	1798 (2.16-2.12)
Sidechain outliers	100360	1798 (2.16-2.12)
RSRZ outliers	91569	1699 (2.16-2.12)

The table below summarises the geometric issues observed across the polymeric chains and their fit to the electron density. The red, orange, yellow and green segments on the lower bar indicate the fraction of residues that contain outliers for  $\geq 3$ , 2, 1 and 0 types of geometric quality criteria. A grey segment represents the fraction of residues that are not modelled. The numeric value for each fraction is indicated below the corresponding segment, with a dot representing fractions  $\leq 5\%$ . The upper red bar (where present) indicates the fraction of residues that have poor fit to the electron density. The numeric value is given above the bar.

Mol	Chain	Length	Quality of chain
1	A	422	<div> <div>10%</div> <div> <div></div> <div>71%</div> <div>24%</div> <div>• •</div> </div> </div>
1	B	422	<div> <div>4%</div> <div> <div></div> <div>73%</div> <div>22%</div> <div>• •</div> </div> </div>

The following table lists non-polymeric compounds, carbohydrate monomers and non-standard residues in protein, DNA, RNA chains that are outliers for geometric or electron-density-fit criteria:

Mol	Type	Chain	Res	Chirality	Geometry	Clashes	Electron density
3	H4B	A	760	-	-	-	X
5	ACT	A	860	-	-	-	X
5	ACT	B	860	-	-	-	X

## 2 Entry composition [i](#)

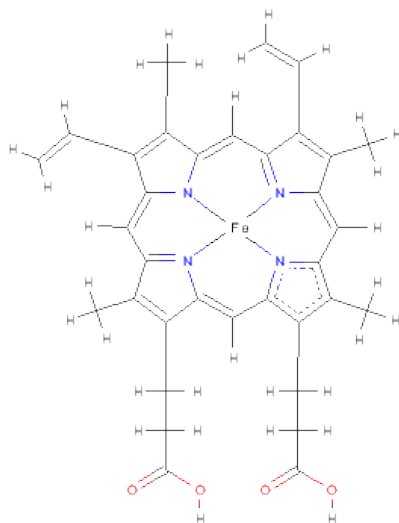
There are 7 unique types of molecules in this entry. The entry contains 7004 atoms, of which 0 are hydrogens and 0 are deuteriums.

In the tables below, the ZeroOcc column contains the number of atoms modelled with zero occupancy, the AltConf column contains the number of residues with at least one atom in alternate conformation and the Trace column contains the number of residues modelled with at most 2 atoms.

- Molecule 1 is a protein called NITRIC OXIDE SYNTHASE, BRAIN.

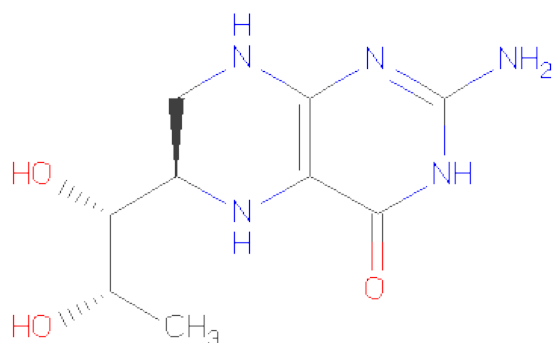
Mol	Chain	Residues	Atoms					ZeroOcc	AltConf	Trace
1	A	408	Total	C	N	O	S	0	2	1
			3323	2127	567	607	22			
1	B	411	Total	C	N	O	S	0	2	0
			3354	2146	574	613	21			

- Molecule 2 is PROTOPORPHYRIN IX CONTAINING FE (three-letter code: HEM) (formula:  $C_{34}H_{32}FeN_4O_4$ ).



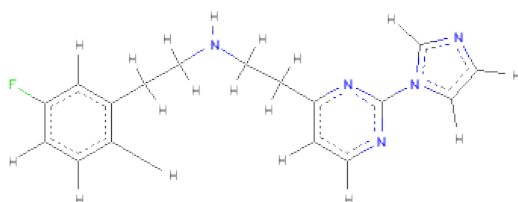
Mol	Chain	Residues	Atoms					ZeroOcc	AltConf
2	A	1	Total	C	Fe	N	O	0	0
			43	34	1	4	4		
2	B	1	Total	C	Fe	N	O	0	0
			43	34	1	4	4		

- Molecule 3 is 5,6,7,8-TETRAHYDROBIOPTERIN (three-letter code: H4B) (formula:  $C_9H_{15}N_5O_3$ ).



Mol	Chain	Residues	Atoms				ZeroOcc	AltConf
3	A	1	Total	C	N	O	0	0
			17	9	5	3		
3	B	1	Total	C	N	O	0	0
			17	9	5	3		

- Molecule 4 is 2-(3-FLUOROPHENYL)-N-{2-[2-(1H-IMIDAZOL-1-YL)PYRIMIDIN-4-YL]ETHYL}ETHANAMINE (three-letter code: E2Z) (formula: C<sub>17</sub>H<sub>18</sub>FN<sub>5</sub>).



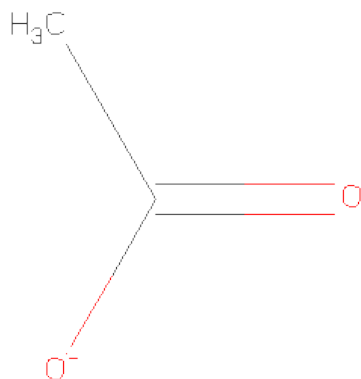
Mol	Chain	Residues	Atoms				ZeroOcc	AltConf
4	A	1	Total	C	F	N	0	0
			23	17	1	5		

*Continued on next page...*

Continued from previous page...

Mol	Chain	Residues	Atoms				ZeroOcc	AltConf
4	B	1	Total	C	F	N	0	0
			23	17	1	5		

- Molecule 5 is ACETATE ION (three-letter code: ACT) (formula: C<sub>2</sub>H<sub>3</sub>O<sub>2</sub>).



Mol	Chain	Residues	Atoms			ZeroOcc	AltConf
5	A	1	Total	C	O	0	0
			4	2	2		
5	B	1	Total	C	O	0	0
			4	2	2		

- Molecule 6 is ZINC ION (three-letter code: ZN) (formula: Zn).

Mol	Chain	Residues	Atoms		ZeroOcc	AltConf
6	A	1	Total	Zn	0	0
			1	1		

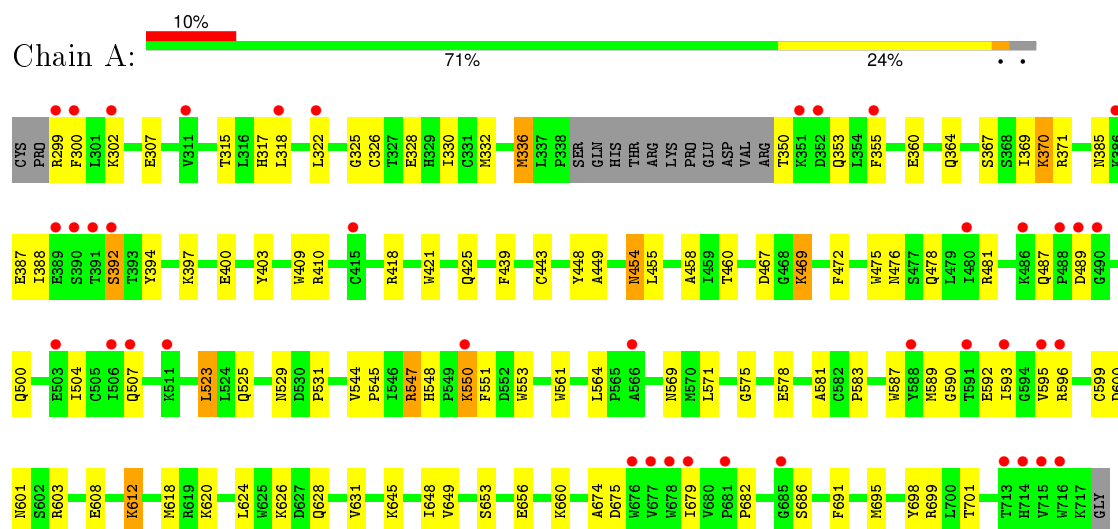
- Molecule 7 is water.

Mol	Chain	Residues	Atoms		ZeroOcc	AltConf
7	A	72	Total	O	0	0
			72	72		
7	B	80	Total	O	0	0
			80	80		

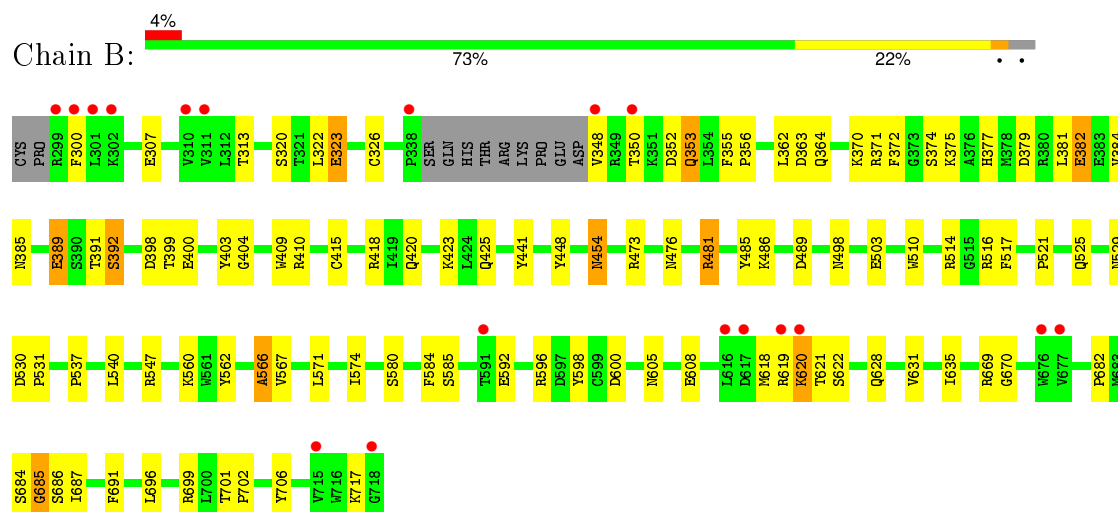
### 3 Residue-property plots

These plots are drawn for all protein, RNA and DNA chains in the entry. The first graphic for a chain summarises the proportions of errors displayed in the second graphic. The second graphic shows the sequence view annotated by issues in geometry and electron density. Residues are color-coded according to the number of geometric quality criteria for which they contain at least one outlier: green = 0, yellow = 1, orange = 2 and red = 3 or more. A red dot above a residue indicates a poor fit to the electron density ( $RSRZ > 2$ ). Stretches of 2 or more consecutive residues without any outlier are shown as a green connector. Residues present in the sample, but not in the model, are shown in grey.

#### • Molecule 1: NITRIC OXIDE SYNTHASE, BRAIN



#### • Molecule 1: NITRIC OXIDE SYNTHASE, BRAIN



## 4 Data and refinement statistics

Property	Value	Source
Space group	P 21 21 21	Depositor
Cell constants a, b, c, $\alpha$ , $\beta$ , $\gamma$	51.84Å 110.25Å 164.32Å 90.00° 90.00° 90.00°	Depositor
Resolution (Å)	91.72 – 2.13 38.85 – 2.13	Depositor EDS
% Data completeness (in resolution range)	98.6 (91.72-2.13) 98.7 (38.85-2.13)	Depositor EDS
$R_{merge}$	0.10	Depositor
$R_{sym}$	(Not available)	Depositor
$\langle I/\sigma(I) \rangle$ <sup>1</sup>	1.62 (at 2.14Å)	Xtriage
Refinement program	REFMAC 5.8.0049	Depositor
R, $R_{free}$	0.206 , 0.265 0.206 , 0.264	Depositor DCC
$R_{free}$ test set	2640 reflections (5.27%)	DCC
Wilson B-factor (Å <sup>2</sup> )	40.2	Xtriage
Anisotropy	0.627	Xtriage
Bulk solvent $k_{sol}$ (e/Å <sup>3</sup> ), $B_{sol}$ (Å <sup>2</sup> )	0.37 , 44.0	EDS
Estimated twinning fraction	No twinning to report.	Xtriage
L-test for twinning <sup>2</sup>	$\langle  L  \rangle = 0.48$ , $\langle L^2 \rangle = 0.31$	Xtriage
Outliers	3 of 52723 reflections (0.006%)	Xtriage
$F_o, F_c$ correlation	0.96	EDS
Total number of atoms	7004	wwPDB-VP
Average B, all atoms (Å <sup>2</sup> )	51.0	wwPDB-VP

Xtriage's analysis on translational NCS is as follows: *The largest off-origin peak in the Patterson function is 6.16% of the height of the origin peak. No significant pseudotranslation is detected.*

<sup>1</sup> Intensities estimated from amplitudes.

<sup>2</sup> Theoretical values of  $\langle |L| \rangle$ ,  $\langle L^2 \rangle$  for acentric reflections are 0.5, 0.375 respectively for untwinned datasets, and 0.333, 0.2 for perfectly twinned datasets.



## 5 Model quality ⓘ

### 5.1 Standard geometry ⓘ

Bond lengths and bond angles in the following residue types are not validated in this section: HEM, ZN, H4B, E2Z, ACT

The Z score for a bond length (or angle) is the number of standard deviations the observed value is removed from the expected value. A bond length (or angle) with  $|Z| > 5$  is considered an outlier worth inspection. RMSZ is the root-mean-square of all Z scores of the bond lengths (or angles).

Mol	Chain	Bond lengths		Bond angles	
		RMSZ	# Z  >5	RMSZ	# Z  >5
1	A	0.89	3/3422 (0.1%)	0.98	7/4643 (0.2%)
1	B	1.05	8/3453 (0.2%)	1.04	9/4681 (0.2%)
All	All	0.97	11/6875 (0.2%)	1.01	16/9324 (0.2%)

All (11) bond length outliers are listed below:

Mol	Chain	Res	Type	Atoms	Z	Observed(Å)	Ideal(Å)
1	A	592	GLU	CG-CD	9.10	1.65	1.51
1	A	596	ARG	CZ-NH2	7.51	1.42	1.33
1	B	400	GLU	CD-OE1	6.23	1.32	1.25
1	B	403	TYR	CG-CD2	6.00	1.47	1.39
1	B	562	TYR	CE2-CZ	5.87	1.46	1.38
1	B	566	ALA	C-O	5.76	1.34	1.23
1	B	592	GLU	CG-CD	5.43	1.60	1.51
1	A	600	ASP	CB-CG	5.41	1.63	1.51
1	B	371	ARG	NE-CZ	5.39	1.40	1.33
1	B	441	TYR	CG-CD1	5.24	1.46	1.39
1	B	670	GLY	N-CA	5.20	1.53	1.46

All (16) bond angle outliers are listed below:

Mol	Chain	Res	Type	Atoms	Z	Observed(°)	Ideal(°)
1	A	596	ARG	NE-CZ-NH1	-12.49	114.06	120.30
1	A	600	ASP	CB-CG-OD2	8.79	126.21	118.30
1	A	418	ARG	NE-CZ-NH1	-6.90	116.85	120.30
1	B	489	ASP	CB-CG-OD2	-6.81	112.17	118.30
1	A	592	GLU	OE1-CD-OE2	-6.46	115.55	123.30
1	A	410	ARG	NE-CZ-NH2	-6.13	117.23	120.30
1	B	489	ASP	CB-CG-OD1	6.11	123.80	118.30
1	B	481	ARG	NE-CZ-NH1	-6.04	117.28	120.30

*Continued on next page...*

*Continued from previous page...*

Mol	Chain	Res	Type	Atoms	Z	Observed(°)	Ideal(°)
1	A	596	ARG	NE-CZ-NH2	5.74	123.17	120.30
1	B	530	ASP	C-N-CD	5.64	140.25	128.40
1	B	592	GLU	OE1-CD-OE2	-5.56	116.63	123.30
1	B	371	ARG	NE-CZ-NH2	-5.39	117.60	120.30
1	A	410	ARG	NE-CZ-NH1	5.32	122.96	120.30
1	B	410	ARG	NE-CZ-NH1	-5.32	117.64	120.30
1	B	669	ARG	NE-CZ-NH2	-5.04	117.78	120.30
1	B	560	LYS	CD-CE-NZ	-5.03	100.12	111.70

There are no chirality outliers.

There are no planarity outliers.

## 5.2 Too-close contacts

In the following table, the Non-H and H(model) columns list the number of non-hydrogen atoms and hydrogen atoms in the chain respectively. The H(added) column lists the number of hydrogen atoms added and optimized by MolProbity. The Clashes column lists the number of clashes within the asymmetric unit, whereas Symm-Clashes lists symmetry related clashes.

Mol	Chain	Non-H	H(model)	H(added)	Clashes	Symm-Clashes
1	A	3323	0	3231	69	0
1	B	3354	0	3270	66	0
2	A	43	0	30	4	0
2	B	43	0	30	11	0
3	A	17	0	15	2	0
3	B	17	0	15	0	0
4	A	23	0	18	1	0
4	B	23	0	18	1	0
5	A	4	0	3	1	0
5	B	4	0	3	0	0
6	A	1	0	0	0	0
7	A	72	0	0	0	0
7	B	80	0	0	5	0
All	All	7004	0	6633	135	0

The all-atom clashscore is defined as the number of clashes found per 1000 atoms (including hydrogen atoms). The all-atom clashscore for this structure is 10.

All (135) close contacts within the same asymmetric unit are listed below, sorted by their clash magnitude.

Atom-1	Atom-2	Interatomic distance (Å)	Clash overlap (Å)
2:B:750:HEM:HBC2	2:B:750:HEM:HMC2	1.34	1.08
1:B:596:ARG:NH2	1:B:600:ASP:OD2	1.98	0.95
1:B:537:PRO:HG2	1:B:540:LEU:HD22	1.46	0.95
1:A:336:MET:HE2	3:A:760:H4B:O4	1.75	0.84
1:A:336:MET:CE	3:A:760:H4B:O4	2.28	0.81
1:A:350:THR:N	1:A:353:GLN:HE21	1.83	0.76
1:A:322:LEU:HB2	1:A:699:ARG:HB2	1.73	0.70
1:B:364:GLN:NE2	7:B:2003:HOH:O	2.24	0.69
1:B:391:THR:O	1:B:392:SER:HB2	1.92	0.69
1:A:571:LEU:HD21	1:A:578:GLU:HB3	1.74	0.69
1:A:487:GLN:HB2	1:A:489:ASP:HB3	1.78	0.66
1:A:328:GLU:HB3	1:B:323:GLU:HG2	1.78	0.65
1:B:398:ASP:HB2	7:B:2008:HOH:O	1.95	0.65
2:A:750:HEM:CMC	2:A:750:HEM:HBC2	2.28	0.63
2:A:750:HEM:HMC1	2:A:750:HEM:HBC2	1.81	0.63
1:B:415:CYS:HB2	2:B:750:HEM:C4D	2.34	0.63
1:B:415:CYS:HB2	2:B:750:HEM:ND	2.12	0.63
2:B:750:HEM:HBC2	2:B:750:HEM:CMC	2.17	0.62
1:A:355:PHE:CE1	1:A:385:ASN:HB2	2.34	0.61
1:A:523:LEU:HD22	1:A:531:PRO:HB2	1.82	0.61
1:A:589:MET:HA	1:A:649:VAL:O	2.00	0.61
1:A:475:TRP:HB2	1:A:523:LEU:HB3	1.83	0.61
1:B:510:TRP:CE2	1:B:521:PRO:HD3	2.37	0.60
1:B:355:PHE:CE2	1:B:385:ASN:HB2	2.37	0.59
1:B:353:GLN:O	1:B:356:PRO:HG2	2.02	0.59
1:A:454:ASN:HD22	1:A:454:ASN:C	2.07	0.59
1:B:404:GLY:HA3	1:B:574:ILE:HD13	1.84	0.58
1:B:620:LYS:HA	1:B:620:LYS:HE3	1.86	0.58
1:B:391:THR:O	1:B:392:SER:CB	2.51	0.58
1:B:375:LYS:NZ	1:B:379:ASP:OD2	2.37	0.56
1:B:350:THR:O	1:B:353:GLN:HG2	2.05	0.56
1:A:631:VAL:HG11	1:B:628:GLN:HG3	1.87	0.56
1:A:350:THR:N	1:A:353:GLN:NE2	2.53	0.56
1:A:409:TRP:CE3	1:A:421:TRP:HA	2.42	0.55
1:B:619:ARG:HH11	1:B:619:ARG:HB2	1.71	0.55
1:A:487:GLN:C	1:A:489:ASP:H	2.11	0.54
1:A:325:GLY:O	1:A:332:MET:HG3	2.07	0.53
1:B:701:THR:HB	1:B:702:PRO:HA	1.90	0.53
1:B:619:ARG:HB2	1:B:619:ARG:NH1	2.24	0.53
1:A:626:LYS:HB3	1:B:687:ILE:HD12	1.91	0.53
1:A:388:ILE:O	1:A:392:SER:HA	2.07	0.53
1:B:476:ASN:HB3	7:B:2039:HOH:O	2.08	0.53

Continued on next page...

*Continued from previous page...*

Atom-1	Atom-2	Interatomic distance (Å)	Clash overlap (Å)
1:B:608:GLU:HG3	1:B:618:MET:HE1	1.91	0.53
1:B:409:TRP:CE2	2:B:750:HEM:C2C	2.97	0.52
1:A:628:GLN:HG3	1:B:631:VAL:HG11	1.90	0.52
2:B:750:HEM:HHC	2:B:750:HEM:HBB2	1.91	0.52
1:A:388:ILE:O	1:A:392:SER:N	2.43	0.52
1:B:525:GLN:HG3	1:B:529:ASN:O	2.10	0.51
1:A:369:ILE:O	1:A:370:LYS:HE3	2.10	0.51
1:A:603:ARG:HH11	1:A:603:ARG:HG3	1.76	0.51
1:B:374:SER:O	1:B:377:HIS:HB3	2.11	0.50
1:A:525:GLN:HG3	1:A:529:ASN:O	2.12	0.50
1:A:500:GLN:O	1:A:504:ILE:HG13	2.12	0.49
1:B:481:ARG:NE	1:B:498:ASN:HD21	2.11	0.49
1:A:460:THR:O	1:A:583:PRO:HD2	2.12	0.49
1:A:317:HIS:CE1	1:A:318:LEU:HG	2.48	0.49
1:A:350:THR:OG1	1:A:353:GLN:NE2	2.45	0.49
1:A:550:LYS:NZ	1:A:550:LYS:HA	2.28	0.48
1:A:487:GLN:C	1:A:489:ASP:N	2.66	0.48
1:A:439:PHE:CE1	1:A:443:CYS:SG	3.07	0.48
1:B:382:GLU:HA	1:B:382:GLU:OE1	2.12	0.48
1:A:322:LEU:HB3	1:A:699:ARG:HH21	1.78	0.48
2:A:750:HEM:O1D	4:A:800:E2Z:N19	2.46	0.48
1:B:701:THR:HA	1:B:702:PRO:C	2.34	0.48
1:B:385:ASN:O	1:B:389:GLU:HG2	2.14	0.47
1:B:353:GLN:HG2	1:B:353:GLN:H	1.40	0.47
1:A:364:GLN:HG3	1:A:403:TYR:OH	2.14	0.47
1:A:686:SER:HA	1:A:691:PHE:CG	2.49	0.47
1:B:307[B]:GLU:HA	1:B:307[B]:GLU:OE1	2.15	0.47
1:B:485:TYR:CZ	1:B:514:ARG:HA	2.50	0.47
1:A:601:ASN:HB2	1:B:307[B]:GLU:CD	2.35	0.46
1:A:675:ASP:O	1:A:679:ILE:HG12	2.15	0.46
1:A:561:TRP:CD1	1:A:593:ILE:HD13	2.51	0.46
1:A:318:LEU:HD23	1:A:318:LEU:HA	1.74	0.46
1:A:478:GLN:HB2	1:A:481:ARG:HG3	1.98	0.46
1:B:454:ASN:ND2	7:B:2026:HOH:O	2.49	0.46
1:A:387:GLU:OE2	1:A:394:TYR:HA	2.16	0.45
1:A:590:GLY:HA2	1:A:648:ILE:HD11	1.99	0.45
2:B:750:HEM:C1A	4:B:800:E2Z:H02	2.52	0.45
1:A:425:GLN:HG2	1:A:448:TYR:CE2	2.52	0.45
1:B:686:SER:HA	1:B:691:PHE:CG	2.51	0.45
1:B:596:ARG:HH21	1:B:600:ASP:CG	2.08	0.44
1:A:300:PHE:N	1:A:300:PHE:CD1	2.85	0.44

*Continued on next page...*

*Continued from previous page...*

Atom-1	Atom-2	Interatomic distance (Å)	Clash overlap (Å)
1:A:455:LEU:HD13	1:A:564:LEU:HD12	1.98	0.44
1:B:706:TYR:OH	2:B:750:HEM:O2D	2.19	0.44
2:A:750:HEM:HMC1	2:A:750:HEM:CBC	2.47	0.44
1:A:551:PHE:HB3	1:A:553:TRP:CE2	2.52	0.44
1:B:567:VAL:HB	1:B:584:PHE:CZ	2.52	0.44
1:B:415:CYS:HB2	2:B:750:HEM:C1D	2.52	0.44
1:B:363:ASP:HB3	1:B:372:PHE:HE1	1.82	0.44
2:B:750:HEM:CBC	2:B:750:HEM:HMC2	2.22	0.44
1:B:516:ARG:HG2	1:B:517:PHE:CE2	2.53	0.44
1:A:469:LYS:HA	1:A:469:LYS:CE	2.47	0.44
1:A:472:PHE:O	1:A:581:ALA:HB2	2.18	0.43
1:A:603:ARG:HG3	1:A:603:ARG:NH1	2.33	0.43
1:B:571:LEU:HD23	1:B:571:LEU:C	2.38	0.43
1:B:619:ARG:HH11	1:B:619:ARG:CB	2.30	0.43
1:B:322:LEU:HB2	1:B:699:ARG:HB2	2.00	0.43
1:B:567:VAL:HB	1:B:584:PHE:CE1	2.53	0.43
2:B:750:HEM:HBD1	2:B:750:HEM:HHA	1.99	0.43
1:B:418:ARG:C	1:B:420:GLN:H	2.22	0.43
1:A:674:ALA:HB3	1:A:695:MET:HB3	2.01	0.43
1:A:322:LEU:CB	1:A:699:ARG:HE	2.31	0.42
1:A:682:PRO:HB2	1:B:686:SER:HB3	2.01	0.42
1:A:449:ALA:O	1:A:455:LEU:HA	2.19	0.42
1:B:448:TYR:CD1	1:B:448:TYR:C	2.92	0.42
1:B:566:ALA:HB2	1:B:585:SER:HB3	2.00	0.42
1:A:612:LYS:HG3	1:A:618:MET:SD	2.59	0.42
1:A:624:LEU:HD12	1:B:635:ILE:HG13	2.02	0.42
1:B:473:ARG:HD2	1:B:580:SER:O	2.20	0.42
1:A:326:CYS:HB3	1:B:326:CYS:HB3	2.01	0.42
1:A:317:HIS:HA	1:A:698:TYR:CE2	2.55	0.42
1:A:587:TRP:CZ2	5:A:860:ACT:H1	2.54	0.42
1:B:370:LYS:HZ3	1:B:370:LYS:HG3	1.64	0.42
1:A:322:LEU:HB2	1:A:699:ARG:CB	2.45	0.41
1:B:353:GLN:HB3	1:B:353:GLN:HE21	1.68	0.41
1:A:425:GLN:O	1:A:458:ALA:HA	2.20	0.41
1:A:467:ASP:OD1	1:A:469:LYS:HB2	2.20	0.41
1:B:684:SER:O	1:B:685:GLY:C	2.59	0.41
1:A:544:VAL:HA	1:A:545:PRO:HD2	1.82	0.41
1:B:399:THR:HG23	7:B:2008:HOH:O	2.21	0.41
1:A:548:HIS:CE1	1:A:550:LYS:HB3	2.56	0.41
1:A:561:TRP:CD1	1:A:593:ILE:CD1	3.03	0.41
1:B:300:PHE:HB3	1:B:313:THR:CG2	2.50	0.41

*Continued on next page...*

Continued from previous page...

Atom-1	Atom-2	Interatomic distance (Å)	Clash overlap (Å)
1:A:397:LYS:HB2	1:A:400:GLU:HG3	2.02	0.41
1:A:595:VAL:O	1:A:599:CYS:HB2	2.21	0.41
1:B:322:LEU:HD13	1:B:699:ARG:NH2	2.36	0.41
1:B:362:LEU:HD11	1:B:384:VAL:HG21	2.03	0.41
1:B:425:GLN:HG2	1:B:448:TYR:CZ	2.55	0.40
1:B:598:TYR:O	1:B:605:ASN:N	2.55	0.40
1:A:547:ARG:H	1:A:547:ARG:HD3	1.86	0.40
1:B:485:TYR:CE2	1:B:514:ARG:HA	2.57	0.40
1:A:330:ILE:HD11	1:B:696:LEU:HB3	2.03	0.40
1:A:388:ILE:O	1:A:392:SER:CA	2.69	0.40
1:A:686:SER:OG	1:B:682:PRO:HB2	2.22	0.40

There are no symmetry-related clashes.

## 5.3 Torsion angles

### 5.3.1 Protein backbone

In the following table, the Percentiles column shows the percent Ramachandran outliers of the chain as a percentile score with respect to all X-ray entries followed by that with respect to entries of similar resolution.

The Analysed column shows the number of residues for which the backbone conformation was analysed, and the total number of residues.

Mol	Chain	Analysed	Favoured	Allowed	Outliers	Percentiles	
1	A	406/422 (96%)	382 (94%)	22 (5%)	2 (0%)	34	26
1	B	409/422 (97%)	386 (94%)	21 (5%)	2 (0%)	34	26
All	All	815/844 (97%)	768 (94%)	43 (5%)	4 (0%)	34	26

All (4) Ramachandran outliers are listed below:

Mol	Chain	Res	Type
1	B	352	ASP
1	A	575	GLY
1	A	392	SER
1	B	685	GLY

### 5.3.2 Protein sidechains ⓘ

In the following table, the Percentiles column shows the percent sidechain outliers of the chain as a percentile score with respect to all X-ray entries followed by that with respect to entries of similar resolution.

The Analysed column shows the number of residues for which the sidechain conformation was analysed, and the total number of residues.

Mol	Chain	Analysed	Rotameric	Outliers	Percentiles	
1	A	365/377 (97%)	339 (93%)	26 (7%)	18	12
1	B	368/377 (98%)	350 (95%)	18 (5%)	31	25
All	All	733/754 (97%)	689 (94%)	44 (6%)	24	18

All (44) residues with a non-rotameric sidechain are listed below:

Mol	Chain	Res	Type
1	A	299	ARG
1	A	302	LYS
1	A	307[A]	GLU
1	A	307[B]	GLU
1	A	315	THR
1	A	336	MET
1	A	360	GLU
1	A	367	SER
1	A	370	LYS
1	A	371	ARG
1	A	454	ASN
1	A	469	LYS
1	A	476	ASN
1	A	507	GLN
1	A	523	LEU
1	A	547	ARG
1	A	550	LYS
1	A	569	ASN
1	A	608	GLU
1	A	612	LYS
1	A	620	LYS
1	A	645	LYS
1	A	653	SER
1	A	656	GLU
1	A	660	LYS
1	A	701	THR
1	B	320	SER

*Continued on next page...*

*Continued from previous page...*

Mol	Chain	Res	Type
1	B	323	GLU
1	B	348	VAL
1	B	353	GLN
1	B	381	LEU
1	B	382	GLU
1	B	389	GLU
1	B	392	SER
1	B	423	LYS
1	B	454	ASN
1	B	486	LYS
1	B	503	GLU
1	B	531	PRO
1	B	547	ARG
1	B	620	LYS
1	B	621	THR
1	B	622	SER
1	B	717	LYS

Some sidechains can be flipped to improve hydrogen bonding and reduce clashes. All (18) such sidechains are listed below:

Mol	Chain	Res	Type
1	A	317	HIS
1	A	353	GLN
1	A	436	HIS
1	A	454	ASN
1	A	487	GLN
1	A	507	GLN
1	A	569	ASN
1	A	605	ASN
1	A	642	GLN
1	A	697	ASN
1	B	364	GLN
1	B	385	ASN
1	B	454	ASN
1	B	507	GLN
1	B	508	GLN
1	B	605	ASN
1	B	642	GLN
1	B	697	ASN



### 5.3.3 RNA ⓘ

There are no RNA molecules in this entry.

## 5.4 Non-standard residues in protein, DNA, RNA chains ⓘ

There are no non-standard protein/DNA/RNA residues in this entry.

## 5.5 Carbohydrates ⓘ

There are no carbohydrates in this entry.

## 5.6 Ligand geometry ⓘ

Of 9 ligands modelled in this entry, 1 is monoatomic - leaving 8 for Mogul analysis.

In the following table, the Counts columns list the number of bonds (or angles) for which Mogul statistics could be retrieved, the number of bonds (or angles) that are observed in the model and the number of bonds (or angles) that are defined in the chemical component dictionary. The Link column lists molecule types, if any, to which the group is linked. The Z score for a bond length (or angle) is the number of standard deviations the observed value is removed from the expected value. A bond length (or angle) with  $|Z| > 2$  is considered an outlier worth inspection. RMSZ is the root-mean-square of all Z scores of the bond lengths (or angles).

Mol	Type	Chain	Res	Link	Bond lengths			Bond angles		
					Counts	RMSZ	$\# Z  > 2$	Counts	RMSZ	$\# Z  > 2$
2	HEM	A	750	1,4	30,50,50	2.42	7 (23%)	24,82,82	2.51	11 (45%)
3	H4B	A	760	-	13,18,18	1.09	1 (7%)	11,26,26	2.80	6 (54%)
4	E2Z	A	800	2	23,25,25	1.80	8 (34%)	28,32,32	2.92	13 (46%)
5	ACT	A	860	-	1,3,3	1.55	0	0,3,3	0.00	-
2	HEM	B	750	1,4	30,50,50	2.35	6 (20%)	24,82,82	2.39	10 (41%)
3	H4B	B	760	-	13,18,18	1.29	1 (7%)	11,26,26	2.24	3 (27%)
4	E2Z	B	800	2	23,25,25	1.57	3 (13%)	28,32,32	2.92	13 (46%)
5	ACT	B	860	-	1,3,3	2.68	1 (100%)	0,3,3	0.00	-

In the following table, the Chirals column lists the number of chiral outliers, the number of chiral centers analysed, the number of these observed in the model and the number defined in the chemical component dictionary. Similar counts are reported in the Torsion and Rings columns. '-' means no outliers of that kind were identified.

Mol	Type	Chain	Res	Link	Chirals	Torsions	Rings
2	HEM	A	750	1,4	-	0/10/54/54	0/0/8/8

*Continued on next page...*

*Continued from previous page...*

Mol	Type	Chain	Res	Link	Chirals	Torsions	Rings
3	H4B	A	760	-	-	0/8/17/17	0/2/2/2
4	E2Z	A	800	2	-	0/8/12/12	0/3/3/3
5	ACT	A	860	-	-	0/0/0/0	0/0/0/0
2	HEM	B	750	1,4	-	0/10/54/54	0/0/8/8
3	H4B	B	760	-	-	0/8/17/17	0/2/2/2
4	E2Z	B	800	2	-	0/8/12/12	0/3/3/3
5	ACT	B	860	-	-	0/0/0/0	0/0/0/0

All (27) bond length outliers are listed below:

Mol	Chain	Res	Type	Atoms	Z	Observed(Å)	Ideal(Å)
2	A	750	HEM	C2D-C3D	-7.62	1.31	1.54
2	B	750	HEM	C2D-C3D	-7.21	1.32	1.54
2	B	750	HEM	C2C-C1C	-6.60	1.40	1.52
2	A	750	HEM	C2C-C1C	-5.93	1.41	1.52
2	A	750	HEM	C3B-C4B	-4.89	1.47	1.51
2	B	750	HEM	C3D-C4D	-4.51	1.45	1.51
2	B	750	HEM	C3B-C4B	-3.67	1.48	1.51
4	B	800	E2Z	C04-N03	-3.60	1.34	1.39
2	A	750	HEM	C3D-C4D	-3.25	1.47	1.51
2	B	750	HEM	C2B-C1B	-2.87	1.42	1.51
4	A	800	E2Z	C04-N03	-2.37	1.35	1.39
2	A	750	HEM	CHC-C1C	2.01	1.41	1.36
4	A	800	E2Z	C5'-C6'	2.10	1.43	1.38
4	A	800	E2Z	C6'-C1'	2.11	1.43	1.38
4	A	800	E2Z	C02-N01	2.25	1.38	1.34
3	A	760	H4B	C4-N3	2.29	1.37	1.33
4	A	800	E2Z	C2'-C3'	2.35	1.41	1.37
3	B	760	H4B	C4-N3	2.55	1.37	1.33
5	B	860	ACT	CH3-C	2.68	1.52	1.48
2	B	750	HEM	FE-NC	2.81	2.06	1.95
2	A	750	HEM	FE-NC	2.94	2.07	1.95
4	A	800	E2Z	C12-N11	3.04	1.34	1.31
4	B	800	E2Z	C16-N11	3.05	1.41	1.34
2	A	750	HEM	C1C-NC	3.51	1.40	1.36
4	B	800	E2Z	C12-N11	3.57	1.35	1.31
4	A	800	E2Z	C4'-C3'	3.60	1.44	1.37
4	A	800	E2Z	C12-N13	4.02	1.37	1.32

All (56) bond angle outliers are listed below:

Mol	Chain	Res	Type	Atoms	Z	Observed(°)	Ideal(°)
4	B	800	E2Z	N11-C12-N13	-7.30	117.28	126.44
4	A	800	E2Z	N11-C12-N13	-6.53	118.24	126.44
4	B	800	E2Z	C04-N03-C12	-5.38	119.71	125.61
4	A	800	E2Z	C04-N03-C12	-5.05	120.08	125.61
2	B	750	HEM	C1D-CHD-C4C	-4.49	118.31	125.82
4	A	800	E2Z	C21-C1'-C2'	-4.17	113.58	120.56
2	A	750	HEM	C3C-CAC-CBC	-3.89	118.49	124.46
4	B	800	E2Z	C15-C16-N11	-3.59	119.80	123.90
4	B	800	E2Z	C05-C04-N03	-3.36	100.56	106.50
3	A	760	H4B	N3-C2-N1	-3.23	120.23	125.53
2	A	750	HEM	C3B-CAB-CBB	-3.23	119.50	124.46
2	A	750	HEM	CBD-CAD-C3D	-3.01	104.78	113.55
2	A	750	HEM	C1D-CHD-C4C	-2.95	120.89	125.82
2	B	750	HEM	CBA-CAA-C2A	-2.94	107.26	112.53
4	A	800	E2Z	C4'-C3'-C2'	-2.82	119.71	123.35
2	B	750	HEM	C3B-C4B-NB	-2.78	106.31	111.63
4	B	800	E2Z	C16-C15-C14	-2.77	114.49	117.41
3	B	760	H4B	N3-C2-N1	-2.40	121.61	125.53
4	A	800	E2Z	C18-C17-C14	-2.19	102.74	112.61
4	A	800	E2Z	C05-C04-N03	-2.14	102.73	106.50
4	B	800	E2Z	C20-C21-C1'	-2.12	108.44	112.83
4	A	800	E2Z	F7'-C3'-C2'	-2.10	115.42	118.22
4	B	800	E2Z	C02-N03-C12	-2.03	122.04	126.02
4	A	800	E2Z	C6'-C1'-C2'	2.13	121.70	118.55
2	B	750	HEM	CHC-C4B-NB	2.18	129.78	124.52
2	A	750	HEM	CHC-C4B-NB	2.19	129.79	124.52
2	B	750	HEM	C2D-C3D-C4D	2.20	105.23	101.50
2	A	750	HEM	CMD-C2D-C3D	2.20	124.08	114.35
4	B	800	E2Z	C6'-C1'-C2'	2.35	122.02	118.55
3	A	760	H4B	C4A-C8A-N8	2.35	121.20	118.43
4	B	800	E2Z	C05-N01-C02	2.57	113.94	106.06
3	A	760	H4B	N2-C2-N3	2.82	121.86	117.20
2	A	750	HEM	C2D-C3D-C4D	2.83	106.30	101.50
3	B	760	H4B	C4-N3-C2	2.84	119.88	115.94
2	B	750	HEM	CMD-C2D-C3D	2.84	126.93	114.35
3	A	760	H4B	C2-N1-C8A	3.14	121.61	114.54
2	B	750	HEM	CMC-C2C-C3C	3.20	124.51	116.53
4	A	800	E2Z	C17-C14-N13	3.22	120.45	115.69
3	A	760	H4B	C4-N3-C2	3.24	120.43	115.94
2	A	750	HEM	CMB-C2B-C3B	3.49	125.25	116.53
4	B	800	E2Z	N13-C12-N03	3.56	120.08	114.82
4	A	800	E2Z	C04-N03-C02	3.79	115.60	108.53
4	A	800	E2Z	F7'-C3'-C4'	3.80	124.87	118.52

Continued on next page...

*Continued from previous page...*

Mol	Chain	Res	Type	Atoms	Z	Observed(°)	Ideal(°)
2	B	750	HEM	CAD-C3D-C4D	3.82	125.95	112.47
2	B	750	HEM	CMB-C2B-C3B	4.01	126.55	116.53
2	A	750	HEM	CAD-C3D-C4D	4.19	127.23	112.47
2	A	750	HEM	CMC-C2C-C3C	4.48	127.71	116.53
4	B	800	E2Z	N11-C12-N03	4.58	122.62	115.16
2	A	750	HEM	CAD-C3D-C2D	4.61	126.46	113.22
4	B	800	E2Z	C04-N03-C02	5.21	118.24	108.53
4	A	800	E2Z	C12-N13-C14	5.24	122.10	115.26
2	B	750	HEM	CAD-C3D-C2D	5.34	128.56	113.22
3	B	760	H4B	C4-C4A-C8A	5.50	119.54	114.56
4	B	800	E2Z	C12-N13-C14	5.55	122.51	115.26
3	A	760	H4B	C4-C4A-C8A	6.25	120.22	114.56
4	A	800	E2Z	N13-C12-N03	6.37	124.24	114.82

There are no chirality outliers.

There are no torsion outliers.

There are no ring outliers.

6 monomers are involved in 18 short contacts:

Mol	Chain	Res	Type	Clashes	Symm-Clashes
2	A	750	HEM	4	0
3	A	760	H4B	2	0
4	A	800	E2Z	1	0
5	A	860	ACT	1	0
2	B	750	HEM	11	0
4	B	800	E2Z	1	0

## 5.7 Other polymers [i](#)

There are no such residues in this entry.

## 5.8 Polymer linkage issues [i](#)

There are no chain breaks in this entry.

## 6 Fit of model and data ⓘ

### 6.1 Protein, DNA and RNA chains ⓘ

In the following table, the column labelled ‘#RSRZ> 2’ contains the number (and percentage) of RSRZ outliers, followed by percent RSRZ outliers for the chain as percentile scores relative to all X-ray entries and entries of similar resolution. The OWAB column contains the minimum, median, 95<sup>th</sup> percentile and maximum values of the occupancy-weighted average B-factor per residue. The column labelled ‘Q< 0.9’ lists the number of (and percentage) of residues with an average occupancy less than 0.9.

Mol	Chain	Analysed	<RSRZ>	#RSRZ>2	OWAB(Å <sup>2</sup> )	Q<0.9
1	A	408/422 (96%)	0.55	41 (10%) 9 14	32, 53, 82, 105	0
1	B	411/422 (97%)	0.23	18 (4%) 38 47	31, 45, 70, 93	1 (0%)
All	All	819/844 (97%)	0.39	59 (7%) 18 24	31, 49, 79, 105	1 (0%)

All (59) RSRZ outliers are listed below:

Mol	Chain	Res	Type	RSRZ
1	B	300	PHE	7.3
1	B	718	GLY	6.0
1	A	488	PRO	5.6
1	A	715	VAL	5.0
1	A	299	ARG	4.8
1	A	352	ASP	4.8
1	A	716	TRP	4.7
1	A	355	PHE	4.3
1	A	322	LEU	4.2
1	B	619	ARG	4.1
1	A	351	LYS	4.0
1	B	715	VAL	3.9
1	A	300	PHE	3.8
1	A	489	ASP	3.6
1	A	713	THR	3.6
1	B	301	LEU	3.3
1	B	616	LEU	3.3
1	A	311	VAL	3.1
1	A	506	ILE	3.1
1	A	392	SER	2.9
1	A	588	TYR	2.8
1	B	620	LYS	2.8
1	A	415	CYS	2.8
1	A	566	ALA	2.8

*Continued on next page...*

*Continued from previous page...*

Mol	Chain	Res	Type	RSRZ
1	A	677	VAL	2.8
1	A	511	LYS	2.7
1	A	595	VAL	2.7
1	A	318	LEU	2.7
1	A	390	SER	2.7
1	B	302	LYS	2.7
1	B	350	THR	2.7
1	A	389	GLU	2.7
1	A	302	LYS	2.6
1	B	591	THR	2.6
1	B	338	PRO	2.6
1	A	391	THR	2.6
1	A	714	HIS	2.6
1	A	486	LYS	2.5
1	A	386	LYS	2.5
1	A	503	GLU	2.5
1	B	617	ASP	2.5
1	A	679	ILE	2.5
1	A	678	TRP	2.4
1	A	591	THR	2.4
1	A	490	GLY	2.4
1	B	310	VAL	2.3
1	A	596	ARG	2.2
1	A	480	ILE	2.2
1	A	593	ILE	2.2
1	A	507	GLN	2.2
1	A	676	TRP	2.1
1	B	299	ARG	2.1
1	A	550	LYS	2.1
1	A	681	PRO	2.1
1	B	311	VAL	2.1
1	B	676	TRP	2.1
1	B	677	VAL	2.1
1	B	348	VAL	2.0
1	A	685	GLY	2.0

## 6.2 Non-standard residues in protein, DNA, RNA chains ⓘ

There are no non-standard protein/DNA/RNA residues in this entry.

### 6.3 Carbohydrates [i](#)

There are no carbohydrates in this entry.

### 6.4 Ligands [i](#)

In the following table, the Atoms column lists the number of modelled atoms in the group and the number defined in the chemical component dictionary. LLDF column lists the quality of electron density of the group with respect to its neighbouring residues in protein, DNA or RNA chains. The B-factors column lists the minimum, median, 95<sup>th</sup> percentile and maximum values of B factors of atoms in the group. The column labelled 'Q< 0.9' lists the number of atoms with occupancy less than 0.9.

Mol	Type	Chain	Res	Atoms	RSCC	RSR	LLDF	B-factors(Å <sup>2</sup> )	Q<0.9
5	ACT	A	860	4/4	0.92	0.29	6.70	90,90,91,95	0
5	ACT	B	860	4/4	0.86	0.16	2.42	60,67,68,69	0
3	H4B	A	760	17/17	0.81	0.29	2.02	58,70,87,96	0
4	E2Z	B	800	23/23	0.94	0.21	1.17	36,39,63,63	0
2	HEM	A	750	43/43	0.97	0.20	0.75	38,40,43,46	0
3	H4B	B	760	17/17	0.90	0.19	0.71	50,54,55,55	0
4	E2Z	A	800	23/23	0.93	0.22	0.44	40,42,65,69	0
2	HEM	B	750	43/43	0.98	0.15	0.22	32,34,42,45	0
6	ZN	A	900	1/1	0.99	0.11	-0.04	55,55,55,55	0

### 6.5 Other polymers [i](#)

There are no such residues in this entry.