



Full wwPDB X-ray Structure Validation Report ⓘ

Feb 1, 2016 – 05:52 AM GMT

PDB ID : 2V51
Title : STRUCTURE OF MAL-RPEL1 COMPLEXED TO ACTIN
Authors : Mouilleron, S.; Guettler, S.; Langer, C.A.; Treisman, R.; Mcdonald, N.Q.
Deposited on : 2008-10-01
Resolution : 2.35 Å(reported)

This is a Full wwPDB X-ray Structure Validation Report for a publicly released PDB entry.
We welcome your comments at validation@mail.wwpdb.org
A user guide is available at
<http://wwpdb.org/validation/2016/XrayValidationReportHelp>
with specific help available everywhere you see the ⓘ symbol.

The following versions of software and data (see [references ⓘ](#)) were used in the production of this report:

MolProbity : 4.02b-467
Mogul : 1.7 (RC4), CSD as536be (2015)
Xtriage (Phenix) : 1.9-1692
EDS : rb-20026688
Percentile statistics : 20151230.v01 (using entries in the PDB archive December 30th 2015)
Refmac : 5.8.0135
CCP4 : 6.5.0
Ideal geometry (proteins) : Engh & Huber (2001)
Ideal geometry (DNA, RNA) : Parkinson et al. (1996)
Validation Pipeline (wwPDB-VP) : trunk26865

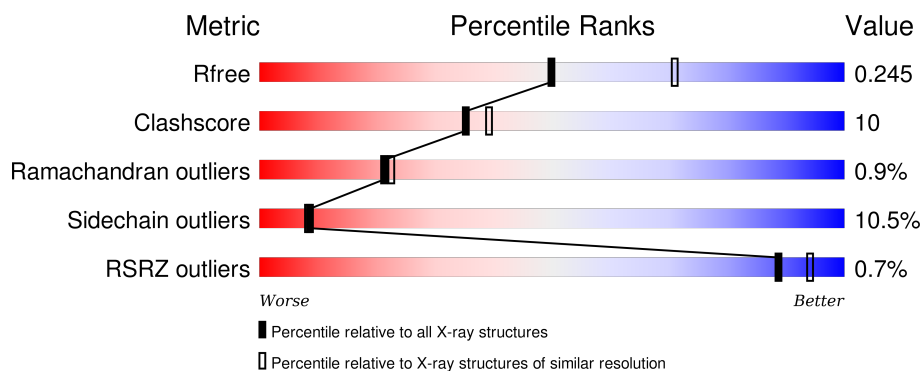
1 Overall quality at a glance

The following experimental techniques were used to determine the structure:

X-RAY DIFFRACTION

The reported resolution of this entry is 2.35 Å.

Percentile scores (ranging between 0-100) for global validation metrics of the entry are shown in the following graphic. The table shows the number of entries on which the scores are based.



Metric	Whole archive (#Entries)	Similar resolution (#Entries, resolution range(Å))
R_{free}	91344	1352 (2.38-2.34)
Clashscore	102246	1456 (2.38-2.34)
Ramachandran outliers	100387	1435 (2.38-2.34)
Sidechain outliers	100360	1436 (2.38-2.34)
RSRZ outliers	91569	1358 (2.38-2.34)

The table below summarises the geometric issues observed across the polymeric chains and their fit to the electron density. The red, orange, yellow and green segments on the lower bar indicate the fraction of residues that contain outliers for ≥ 3 , 2, 1 and 0 types of geometric quality criteria. A grey segment represents the fraction of residues that are not modelled. The numeric value for each fraction is indicated below the corresponding segment, with a dot representing fractions $\leq 5\%$. The upper red bar (where present) indicates the fraction of residues that have poor fit to the electron density. The numeric value is given above the bar.

Mol	Chain	Length	Quality of chain
1	B	377	<div> <div>74%</div> <div>16%</div> <div>• 7%</div> </div>
1	D	377	<div> <div>68%</div> <div>21%</div> <div>• 7%</div> </div>
2	E	32	<div> <div>6%</div> <div>47%</div> <div>31%</div> <div>9%</div> <div>13%</div> </div>
2	F	32	<div> <div>59%</div> <div>25%</div> <div>• 13%</div> </div>

The following table lists non-polymeric compounds, carbohydrate monomers and non-standard residues in protein, DNA, RNA chains that are outliers for geometric or electron-density-fit crite-

ria:

Mol	Type	Chain	Res	Chirality	Geometry	Clashes	Electron density
7	SCN	D	1375	-	-	-	X

2 Entry composition [i](#)

There are 8 unique types of molecules in this entry. The entry contains 6235 atoms, of which 0 are hydrogens and 0 are deuteriums.

In the tables below, the ZeroOcc column contains the number of atoms modelled with zero occupancy, the AltConf column contains the number of residues with at least one atom in alternate conformation and the Trace column contains the number of residues modelled with at most 2 atoms.

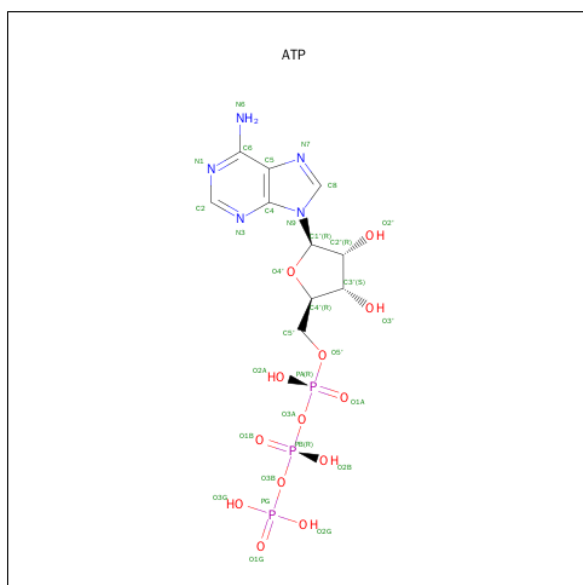
- Molecule 1 is a protein called ACTIN, ALPHA SKELETAL MUSCLE.

Mol	Chain	Residues	Atoms					ZeroOcc	AltConf	Trace
1	B	351	Total	C	N	O	S	0	0	0
			2728	1732	453	525	18			
1	D	352	Total	C	N	O	S	0	0	0
			2734	1735	454	527	18			

- Molecule 2 is a protein called MKL/MYOCARDIN-LIKE PROTEIN 1.

Mol	Chain	Residues	Atoms					ZeroOcc	AltConf	Trace
2	E	28	Total	C	N	O	S	0	0	0
			206	127	41	37	1			
2	F	28	Total	C	N	O	S	0	0	0
			210	129	42	38	1			

- Molecule 3 is ADENOSINE-5'-TRIPHOSPHATE (three-letter code: ATP) (formula: $C_{10}H_{16}N_5O_{13}P_3$).

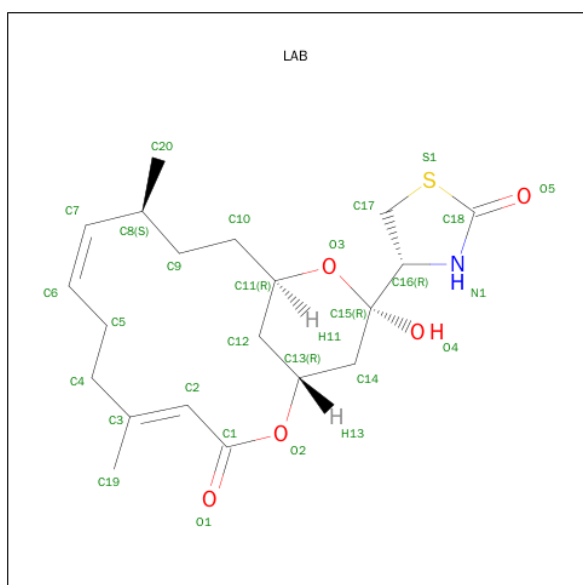


Mol	Chain	Residues	Atoms					ZeroOcc	AltConf
3	B	1	Total	C	N	O	P	0	0
			31	10	5	13	3		
3	D	1	Total	C	N	O	P	0	0
			31	10	5	13	3		

- Molecule 4 is CALCIUM ION (three-letter code: CA) (formula: Ca).

Mol	Chain	Residues	Atoms		ZeroOcc	AltConf
4	B	1	Total	Ca	0	0
			1	1		
4	D	1	Total	Ca	0	0
			1	1		

- Molecule 5 is LATRUNCULIN B (three-letter code: LAB) (formula: C₂₀H₂₉NO₅S).



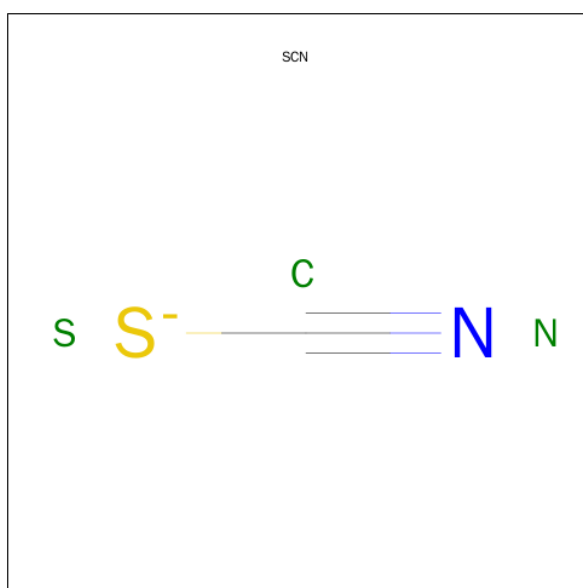
Mol	Chain	Residues	Atoms					ZeroOcc	AltConf
5	B	1	Total	C	N	O	S	0	0
			27	20	1	5	1		
5	D	1	Total	C	N	O	S	0	0
			27	20	1	5	1		

- Molecule 6 is DI(HYDROXYETHYL)ETHER (three-letter code: PEG) (formula: C₄H₁₀O₃).



Mol	Chain	Residues	Atoms			ZeroOcc	AltConf
6	B	1	Total	C	O	0	0
			7	4	3		
6	D	1	Total	C	O	0	0
			7	4	3		

- Molecule 7 is THIOCYANATE ION (three-letter code: SCN) (formula: CNS).



Mol	Chain	Residues	Atoms				ZeroOcc	AltConf
7	B	1	Total	C	N	S	0	0
			3	1	1	1		
7	B	1	Total	C	N	S	0	0
			3	1	1	1		

Continued on next page...

Continued from previous page...

Mol	Chain	Residues	Atoms				ZeroOcc	AltConf
7	D	1	Total	C	N	S	0	0
			3	1	1	1		
7	D	1	Total	C	N	S	0	0
			3	1	1	1		

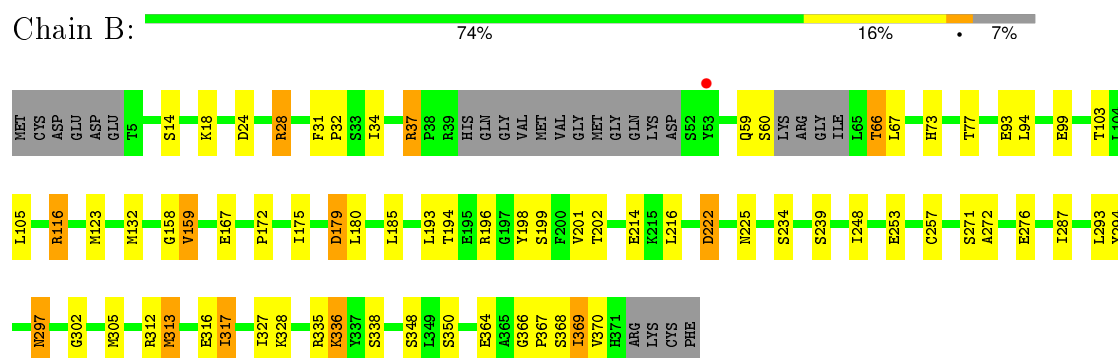
- Molecule 8 is water.

Mol	Chain	Residues	Atoms		ZeroOcc	AltConf
8	B	103	Total	O	0	0
			103	103		
8	D	97	Total	O	0	0
			97	97		
8	E	6	Total	O	0	0
			6	6		
8	F	7	Total	O	0	0
			7	7		

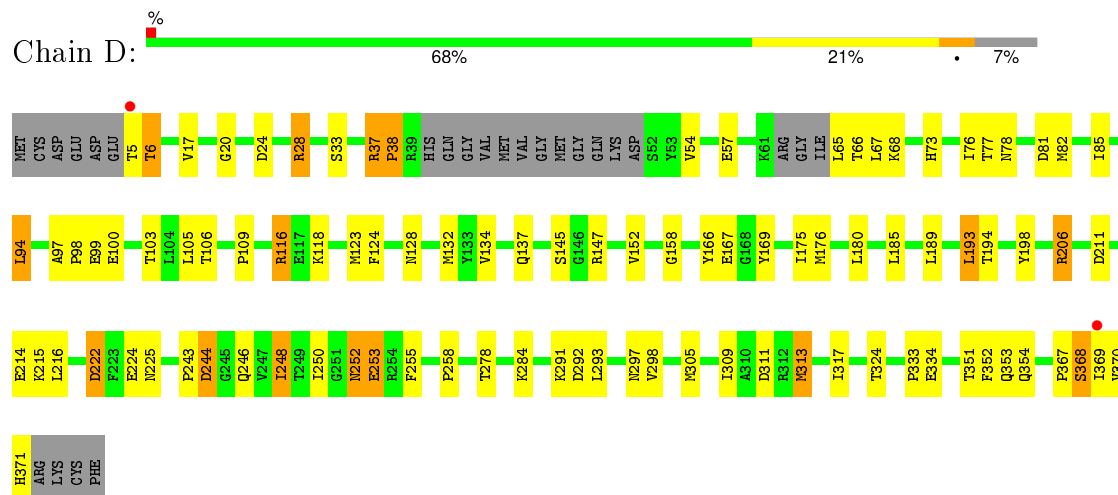
3 Residue-property plots

These plots are drawn for all protein, RNA and DNA chains in the entry. The first graphic for a chain summarises the proportions of errors displayed in the second graphic. The second graphic shows the sequence view annotated by issues in geometry and electron density. Residues are color-coded according to the number of geometric quality criteria for which they contain at least one outlier: green = 0, yellow = 1, orange = 2 and red = 3 or more. A red dot above a residue indicates a poor fit to the electron density ($RSRZ > 2$). Stretches of 2 or more consecutive residues without any outlier are shown as a green connector. Residues present in the sample, but not in the model, are shown in grey.

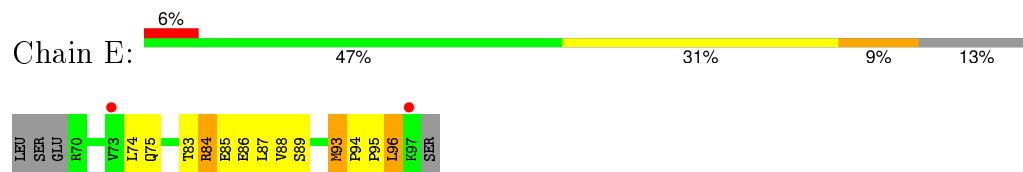
- Molecule 1: ACTIN, ALPHA SKELETAL MUSCLE



- Molecule 1: ACTIN, ALPHA SKELETAL MUSCLE



- Molecule 2: MKL/MYOCARDIN-LIKE PROTEIN 1



- Molecule 2: MKL/MYOCARDIN-LIKE PROTEIN 1



4 Data and refinement statistics

Property	Value	Source
Space group	P 1 21 1	Depositor
Cell constants a, b, c, α , β , γ	53.09 Å 59.07 Å 166.20 Å 90.00° 90.06° 90.00°	Depositor
Resolution (Å)	20.00 – 2.35 19.74 – 2.35	Depositor EDS
% Data completeness (in resolution range)	86.4 (20.00-2.35) 86.2 (19.74-2.35)	Depositor EDS
R_{merge}	0.07	Depositor
R_{sym}	(Not available)	Depositor
$\langle I/\sigma(I) \rangle$ ¹	1.97 (at 2.35 Å)	Xtriage
Refinement program	REFMAC 5.4.0066	Depositor
R, R_{free}	0.183 , 0.248 0.182 , 0.245	Depositor DCC
R_{free} test set	1890 reflections (5.33%)	DCC
Wilson B-factor (Å ²)	34.6	Xtriage
Anisotropy	0.319	Xtriage
Bulk solvent k_{sol} (e/Å ³), B_{sol} (Å ²)	0.35 , 34.2	EDS
Estimated twinning fraction	0.469 for h,-k,-l	Xtriage
L-test for twinning ²	$\langle L \rangle = 0.48$, $\langle L^2 \rangle = 0.31$	Xtriage
Outliers	0 of 37361 reflections	Xtriage
F_o, F_c correlation	0.95	EDS
Total number of atoms	6235	wwPDB-VP
Average B, all atoms (Å ²)	35.0	wwPDB-VP

Xtriage's analysis on translational NCS is as follows: *The largest off-origin peak in the Patterson function is 5.71% of the height of the origin peak. No significant pseudotranslation is detected.*

¹Intensities estimated from amplitudes.

²Theoretical values of $\langle |L| \rangle$, $\langle L^2 \rangle$ for acentric reflections are 0.5, 0.375 respectively for untwinned datasets, and 0.333, 0.2 for perfectly twinned datasets.

5 Model quality

5.1 Standard geometry

Bond lengths and bond angles in the following residue types are not validated in this section: PEG, CA, SCN, ATP, LAB

The Z score for a bond length (or angle) is the number of standard deviations the observed value is removed from the expected value. A bond length (or angle) with $|Z| > 5$ is considered an outlier worth inspection. RMSZ is the root-mean-square of all Z scores of the bond lengths (or angles).

Mol	Chain	Bond lengths		Bond angles	
		RMSZ	$\# Z > 5$	RMSZ	$\# Z > 5$
1	B	0.95	0/2787	0.93	3/3783 (0.1%)
1	D	0.92	0/2793	0.92	3/3791 (0.1%)
2	E	0.74	0/207	0.98	1/279 (0.4%)
2	F	0.73	0/211	0.95	0/284
All	All	0.92	0/5998	0.93	7/8137 (0.1%)

There are no bond length outliers.

All (7) bond angle outliers are listed below:

Mol	Chain	Res	Type	Atoms	Z	Observed(°)	Ideal(°)
1	B	159	VAL	CB-CA-C	-7.89	96.40	111.40
1	D	222	ASP	CB-CG-OD1	6.28	123.95	118.30
1	B	222	ASP	CB-CG-OD2	-6.02	112.88	118.30
1	B	222	ASP	CB-CG-OD1	5.85	123.56	118.30
1	D	81	ASP	CB-CG-OD1	5.71	123.44	118.30
1	D	222	ASP	CB-CG-OD2	-5.45	113.39	118.30
2	E	87	LEU	CB-CG-CD1	-5.32	101.95	111.00

There are no chirality outliers.

There are no planarity outliers.

5.2 Too-close contacts

In the following table, the Non-H and H(model) columns list the number of non-hydrogen atoms and hydrogen atoms in the chain respectively. The H(added) column lists the number of hydrogen atoms added and optimized by MolProbity. The Clashes column lists the number of clashes within the asymmetric unit, whereas Symm-Clashes lists symmetry related clashes.

Mol	Chain	Non-H	H(model)	H(added)	Clashes	Symm-Clashes
1	B	2728	0	2677	35	0
1	D	2734	0	2682	69	0
2	E	206	0	199	11	0
2	F	210	0	205	5	0
3	B	31	0	12	2	0
3	D	31	0	12	2	0
4	B	1	0	0	0	0
4	D	1	0	0	0	0
5	B	27	0	29	0	0
5	D	27	0	29	0	0
6	B	7	0	10	0	0
6	D	7	0	10	0	0
7	B	6	0	0	0	0
7	D	6	0	0	0	0
8	B	103	0	0	0	0
8	D	97	0	0	1	0
8	E	6	0	0	0	0
8	F	7	0	0	1	0
All	All	6235	0	5865	117	0

The all-atom clashscore is defined as the number of clashes found per 1000 atoms (including hydrogen atoms). The all-atom clashscore for this structure is 10.

All (117) close contacts within the same asymmetric unit are listed below, sorted by their clash magnitude.

Atom-1	Atom-2	Interatomic distance (Å)	Clash overlap (Å)
1:B:116:ARG:CB	1:B:116:ARG:HH11	1.52	1.20
1:B:116:ARG:NH1	1:B:116:ARG:HB3	1.61	1.13
1:B:116:ARG:HB3	1:B:116:ARG:HH11	0.84	1.00
1:D:116:ARG:CG	1:D:116:ARG:HH11	1.97	0.78
1:D:37:ARG:HG3	1:D:38:PRO:HD2	1.66	0.77
1:D:5:THR:HG22	1:D:6:THR:H	1.50	0.77
1:D:176:MET:HE3	1:D:176:MET:HA	1.65	0.77
1:D:206:ARG:HG2	1:D:206:ARG:HH11	1.49	0.76
1:B:196:ARG:HD2	1:B:253:GLU:OE1	1.87	0.75
1:D:176:MET:HA	1:D:176:MET:CE	2.19	0.72
1:D:313:MET:HE2	1:D:317:ILE:CD1	2.20	0.72
1:B:116:ARG:HH11	1:B:116:ARG:CG	2.03	0.71
1:D:116:ARG:HG3	1:D:116:ARG:HH11	1.56	0.69
1:B:116:ARG:NH1	1:B:116:ARG:CB	2.38	0.69
2:E:93:MET:HE3	2:E:94:PRO:HD2	1.76	0.67
1:D:313:MET:HE2	1:D:317:ILE:HD12	1.76	0.67

Continued on next page...

Continued from previous page...

Atom-1	Atom-2	Interatomic distance (Å)	Clash overlap (Å)
2:E:93:MET:CE	2:E:94:PRO:HD2	2.24	0.67
1:B:367:PRO:O	1:B:370:VAL:HG12	1.95	0.67
2:F:92:ILE:O	8:F:2007:HOH:O	2.14	0.66
1:D:17:VAL:HG23	1:D:33:SER:HB3	1.79	0.64
1:D:244:ASP:HB2	1:D:246:GLN:H	1.63	0.63
1:D:116:ARG:CB	1:D:116:ARG:HH11	2.10	0.63
1:D:333:PRO:HD2	1:D:334:GLU:OE2	1.98	0.63
1:D:313:MET:CE	1:D:317:ILE:CD1	2.76	0.63
1:B:214:GLU:HG2	3:B:1372:ATP:C5	2.34	0.62
1:D:252:ASN:HD22	1:D:253:GLU:N	1.96	0.62
1:D:5:THR:HG22	1:D:6:THR:N	2.13	0.62
1:D:5:THR:CG2	1:D:6:THR:H	2.13	0.60
1:D:37:ARG:HG3	1:D:38:PRO:CD	2.31	0.59
1:B:34:ILE:HD12	1:B:67:LEU:HD13	1.84	0.59
1:D:206:ARG:HG2	1:D:206:ARG:NH1	2.18	0.59
2:E:83:THR:HG22	2:E:85:GLU:H	1.66	0.59
1:B:172:PRO:HA	1:B:175:ILE:HD12	1.85	0.58
1:B:116:ARG:NH1	1:B:116:ARG:CG	2.64	0.58
1:D:116:ARG:HB2	1:D:116:ARG:HH11	1.68	0.58
2:E:83:THR:HB	2:E:86:GLU:HG3	1.87	0.56
1:D:244:ASP:CB	1:D:246:GLN:H	2.18	0.56
2:E:88:VAL:CG1	2:F:89:SER:HB3	2.35	0.56
2:E:95:PRO:O	2:E:96:LEU:CB	2.53	0.56
1:B:313:MET:CE	1:B:317:ILE:HG23	2.36	0.55
1:D:76:ILE:HD13	1:D:82:MET:HG2	1.88	0.55
1:D:206:ARG:HH11	1:D:206:ARG:CG	2.20	0.55
1:D:24:ASP:OD2	1:D:28:ARG:NH1	2.40	0.54
1:D:214:GLU:HG2	3:D:1372:ATP:C5	2.42	0.54
2:E:83:THR:HG22	2:E:85:GLU:N	2.22	0.54
1:D:166:TYR:CE1	1:D:167:GLU:HG3	2.43	0.54
1:D:368:SER:O	1:D:369:ILE:C	2.48	0.53
1:D:313:MET:CE	1:D:317:ILE:HD11	2.39	0.52
1:D:211:ASP:O	1:D:215:LYS:HG2	2.08	0.52
1:B:37:ARG:O	1:B:66:THR:HB	2.10	0.52
1:D:98:PRO:C	1:D:100:GLU:H	2.14	0.51
1:D:351:THR:HG23	2:E:75:GLN:HE21	1.77	0.50
1:B:32:PRO:HB2	1:B:34:ILE:HG12	1.94	0.49
1:B:302:GLY:HA2	1:B:336:LYS:HG3	1.95	0.49
2:F:93:MET:HE3	2:F:94:PRO:HD2	1.95	0.49
1:D:222:ASP:OD2	1:D:225:ASN:ND2	2.46	0.48
2:F:83:THR:HB	2:F:86:GLU:H	1.77	0.48

Continued on next page...

Continued from previous page...

Atom-1	Atom-2	Interatomic distance (Å)	Clash overlap (Å)
1:D:37:ARG:O	1:D:65:LEU:N	2.46	0.48
1:D:73:HIS:HD2	1:D:158:GLY:O	1.97	0.47
1:D:291:LYS:HE3	1:D:292:ASP:OD2	2.15	0.47
1:D:313:MET:HE1	1:D:317:ILE:HD11	1.96	0.46
2:F:83:THR:HG22	2:F:85:GLU:H	1.81	0.46
1:D:255:PHE:O	1:D:258:PRO:HD2	2.14	0.46
1:D:352:PHE:O	1:D:354:GLN:N	2.48	0.46
1:B:201:VAL:HG12	1:B:202:THR:HG23	1.97	0.46
2:E:93:MET:HE2	2:E:94:PRO:HD2	1.98	0.46
1:D:106:THR:HB	1:D:137:GLN:HG3	1.97	0.46
1:B:24:ASP:OD2	1:B:28:ARG:NH1	2.49	0.46
1:B:312:ARG:O	1:B:316:GLU:HG2	2.16	0.46
1:D:169:TYR:CE1	2:E:84:ARG:HG2	2.50	0.45
1:D:145:SER:OG	1:D:147:ARG:HD2	2.16	0.45
1:B:366:GLY:O	1:B:369:ILE:HG22	2.17	0.45
2:E:84:ARG:HE	2:E:84:ARG:HB3	1.34	0.45
1:D:194:THR:HA	1:D:198:TYR:O	2.17	0.45
1:B:239:SER:HA	1:B:248:ILE:O	2.17	0.45
1:B:105:LEU:HD11	1:B:123:MET:HG3	1.99	0.45
1:D:116:ARG:CG	1:D:116:ARG:NH1	2.69	0.45
1:D:198:TYR:CZ	1:D:248:ILE:HB	2.52	0.44
1:D:152:VAL:HG22	1:D:298:VAL:HB	2.00	0.44
1:D:250:ILE:HB	1:D:253:GLU:HG2	2.00	0.44
1:D:189:LEU:HG	1:D:193:LEU:HD22	1.99	0.44
1:D:132:MET:HE2	1:D:134:VAL:HG23	1.99	0.44
1:D:97:ALA:O	1:D:100:GLU:HB2	2.18	0.43
1:B:317:ILE:HD11	1:B:327:ILE:HG23	2.01	0.43
1:D:278:THR:HG21	1:D:317:ILE:HD11	2.01	0.43
1:D:103:THR:O	1:D:132:MET:HA	2.17	0.43
1:D:252:ASN:HD22	1:D:253:GLU:H	1.62	0.43
1:D:367:PRO:O	1:D:370:VAL:HG12	2.19	0.43
1:B:297:ASN:HB2	1:B:328:LYS:O	2.19	0.43
1:B:73:HIS:HD2	1:B:158:GLY:O	2.02	0.43
1:D:37:ARG:O	1:D:38:PRO:C	2.57	0.42
1:D:132:MET:CE	1:D:134:VAL:HG23	2.49	0.42
1:B:305:MET:HB2	3:B:1372:ATP:C6	2.54	0.42
1:D:166:TYR:CD1	1:D:167:GLU:HG3	2.55	0.42
1:B:201:VAL:HG12	1:B:202:THR:N	2.34	0.42
1:D:99:GLU:HA	1:D:128:ASN:O	2.19	0.42
1:D:124:PHE:CZ	1:D:132:MET:HG2	2.55	0.42
1:B:99:GLU:CD	1:B:99:GLU:H	2.22	0.42

Continued on next page...

Continued from previous page...

Atom-1	Atom-2	Interatomic distance (Å)	Clash overlap (Å)
1:B:272:ALA:HB1	1:B:276:GLU:HB3	2.02	0.41
1:B:103:THR:O	1:B:132:MET:HA	2.19	0.41
1:D:291:LYS:HE2	1:D:291:LYS:HB3	1.63	0.41
1:D:105:LEU:O	1:D:134:VAL:HA	2.20	0.41
1:D:193:LEU:HA	1:D:193:LEU:HD12	1.94	0.41
1:B:73:HIS:CD2	1:B:179:ASP:OD1	2.73	0.41
1:B:194:THR:HA	1:B:198:TYR:O	2.21	0.41
1:D:116:ARG:HB2	1:D:116:ARG:NH1	2.35	0.41
1:D:313:MET:CE	1:D:317:ILE:HG13	2.51	0.41
1:D:305:MET:HB2	3:D:1372:ATP:C6	2.56	0.41
1:D:20:GLY:HA2	1:D:94:LEU:HD11	2.02	0.40
1:B:294:TYR:CD1	1:B:317:ILE:CD1	3.04	0.40
1:B:335:ARG:HA	1:B:338:SER:OG	2.20	0.40
1:D:54:VAL:HG11	1:D:85:ILE:HA	2.02	0.40
1:D:105:LEU:HD11	1:D:123:MET:HG3	2.03	0.40
1:D:118:LYS:NZ	8:D:2038:HOH:O	2.51	0.40
1:B:31:PHE:CE2	1:B:93:GLU:HG3	2.56	0.40
1:D:109:PRO:HB3	1:D:175:ILE:HD13	2.03	0.40
1:B:222:ASP:OD2	1:B:225:ASN:ND2	2.55	0.40

There are no symmetry-related clashes.

5.3 Torsion angles [i](#)

5.3.1 Protein backbone [i](#)

In the following table, the Percentiles column shows the percent Ramachandran outliers of the chain as a percentile score with respect to all X-ray entries followed by that with respect to entries of similar resolution.

The Analysed column shows the number of residues for which the backbone conformation was analysed, and the total number of residues.

Mol	Chain	Analysed	Favoured	Allowed	Outliers	Percentiles	
1	B	345/377 (92%)	327 (95%)	16 (5%)	2 (1%)	30	34
1	D	346/377 (92%)	321 (93%)	21 (6%)	4 (1%)	16	15
2	E	26/32 (81%)	22 (85%)	3 (12%)	1 (4%)	4	1
2	F	26/32 (81%)	26 (100%)	0	0	100	100
All	All	743/818 (91%)	696 (94%)	40 (5%)	7 (1%)	21	22

All (7) Ramachandran outliers are listed below:

Mol	Chain	Res	Type
1	B	66	THR
1	D	38	PRO
1	D	244	ASP
1	D	353	GLN
2	E	96	LEU
1	D	6	THR
1	B	369	ILE

5.3.2 Protein sidechains ⓘ

In the following table, the Percentiles column shows the percent sidechain outliers of the chain as a percentile score with respect to all X-ray entries followed by that with respect to entries of similar resolution.

The Analysed column shows the number of residues for which the sidechain conformation was analysed, and the total number of residues.

Mol	Chain	Analysed	Rotameric	Outliers	Percentiles	
1	B	294/320 (92%)	264 (90%)	30 (10%)	9	9
1	D	295/320 (92%)	266 (90%)	29 (10%)	10	9
2	E	20/31 (64%)	16 (80%)	4 (20%)	1	1
2	F	21/31 (68%)	18 (86%)	3 (14%)	4	4
All	All	630/702 (90%)	564 (90%)	66 (10%)	8	8

All (66) residues with a non-rotameric sidechain are listed below:

Mol	Chain	Res	Type
1	B	14	SER
1	B	18	LYS
1	B	28	ARG
1	B	37	ARG
1	B	59	GLN
1	B	60	SER
1	B	77	THR
1	B	94	LEU
1	B	116	ARG
1	B	159	VAL
1	B	167	GLU
1	B	179	ASP
1	B	180	LEU

Continued on next page...

Continued from previous page...

Mol	Chain	Res	Type
1	B	185	LEU
1	B	193	LEU
1	B	199	SER
1	B	216	LEU
1	B	234	SER
1	B	257	CYS
1	B	271	SER
1	B	287	ILE
1	B	293	LEU
1	B	297	ASN
1	B	313	MET
1	B	317	ILE
1	B	336	LYS
1	B	348	SER
1	B	350	SER
1	B	364	GLU
1	B	368	SER
1	D	28	ARG
1	D	37	ARG
1	D	57	GLU
1	D	66	THR
1	D	67	LEU
1	D	68	LYS
1	D	77	THR
1	D	78	ASN
1	D	94	LEU
1	D	116	ARG
1	D	180	LEU
1	D	185	LEU
1	D	193	LEU
1	D	206	ARG
1	D	216	LEU
1	D	224	GLU
1	D	243	PRO
1	D	248	ILE
1	D	252	ASN
1	D	253	GLU
1	D	284	LYS
1	D	293	LEU
1	D	297	ASN
1	D	309	ILE
1	D	311	ASP

Continued on next page...

Continued from previous page...

Mol	Chain	Res	Type
1	D	313	MET
1	D	324	THR
1	D	368	SER
1	D	371	HIS
2	E	74	LEU
2	E	84	ARG
2	E	89	SER
2	E	93	MET
2	F	72	ASN
2	F	90	GLN
2	F	93	MET

Some sidechains can be flipped to improve hydrogen bonding and reduce clashes. All (14) such sidechains are listed below:

Mol	Chain	Res	Type
1	B	59	GLN
1	B	73	HIS
1	B	246	GLN
1	B	280	ASN
1	B	360	GLN
1	D	73	HIS
1	D	78	ASN
1	D	121	GLN
1	D	246	GLN
1	D	252	ASN
1	D	280	ASN
2	E	75	GLN
2	F	75	GLN
2	F	90	GLN

5.3.3 RNA ⓘ

There are no RNA molecules in this entry.

5.4 Non-standard residues in protein, DNA, RNA chains ⓘ

There are no non-standard protein/DNA/RNA residues in this entry.

5.5 Carbohydrates [i](#)

There are no carbohydrates in this entry.

5.6 Ligand geometry [i](#)

Of 12 ligands modelled in this entry, 2 are monoatomic - leaving 10 for Mogul analysis.

In the following table, the Counts columns list the number of bonds (or angles) for which Mogul statistics could be retrieved, the number of bonds (or angles) that are observed in the model and the number of bonds (or angles) that are defined in the chemical component dictionary. The Link column lists molecule types, if any, to which the group is linked. The Z score for a bond length (or angle) is the number of standard deviations the observed value is removed from the expected value. A bond length (or angle) with $|Z| > 2$ is considered an outlier worth inspection. RMSZ is the root-mean-square of all Z scores of the bond lengths (or angles).

Mol	Type	Chain	Res	Link	Bond lengths			Bond angles		
					Counts	RMSZ	# Z > 2	Counts	RMSZ	# Z > 2
3	ATP	B	1372	4	24,33,33	0.78	0	31,52,52	2.63	7 (22%)
5	LAB	B	1374	-	27,29,29	1.48	4 (14%)	28,41,41	2.20	9 (32%)
6	PEG	B	1375	-	6,6,6	0.66	0	5,5,5	1.24	1 (20%)
7	SCN	B	1376	-	2,2,2	2.05	1 (50%)	1,1,1	1.79	0
7	SCN	B	1377	-	2,2,2	1.76	1 (50%)	1,1,1	1.28	0
3	ATP	D	1372	4	24,33,33	0.99	1 (4%)	31,52,52	2.72	11 (35%)
5	LAB	D	1374	-	27,29,29	1.41	3 (11%)	28,41,41	1.88	10 (35%)
7	SCN	D	1375	-	2,2,2	1.95	1 (50%)	1,1,1	1.70	0
7	SCN	D	1376	-	2,2,2	2.07	1 (50%)	1,1,1	1.29	0
6	PEG	D	1377	-	6,6,6	0.59	0	5,5,5	0.87	0

In the following table, the Chirals column lists the number of chiral outliers, the number of chiral centers analysed, the number of these observed in the model and the number defined in the chemical component dictionary. Similar counts are reported in the Torsion and Rings columns. '-' means no outliers of that kind were identified.

Mol	Type	Chain	Res	Link	Chirals	Torsions	Rings
3	ATP	B	1372	4	-	0/18/38/38	0/3/3/3
5	LAB	B	1374	-	-	0/21/49/49	0/1/3/3
6	PEG	B	1375	-	-	0/4/4/4	0/0/0/0
7	SCN	B	1376	-	-	0/0/0/0	0/0/0/0
7	SCN	B	1377	-	-	0/0/0/0	0/0/0/0
3	ATP	D	1372	4	-	0/18/38/38	0/3/3/3
5	LAB	D	1374	-	-	0/21/49/49	0/1/3/3
7	SCN	D	1375	-	-	0/0/0/0	0/0/0/0

Continued on next page...

Continued from previous page...

Mol	Type	Chain	Res	Link	Chirals	Torsions	Rings
7	SCN	D	1376	-	-	0/0/0/0	0/0/0/0
6	PEG	D	1377	-	-	0/4/4/4	0/0/0/0

All (12) bond length outliers are listed below:

Mol	Chain	Res	Type	Atoms	Z	Observed(Å)	Ideal(Å)
5	D	1374	LAB	C17-S1	-2.26	1.76	1.81
5	B	1374	LAB	C17-S1	-2.11	1.77	1.81
5	B	1374	LAB	C14-C15	2.18	1.56	1.52
5	B	1374	LAB	O4-C15	2.43	1.45	1.41
7	B	1377	SCN	C-S	2.45	1.79	1.63
7	D	1375	SCN	C-S	2.60	1.80	1.63
7	B	1376	SCN	C-S	2.72	1.81	1.63
5	D	1374	LAB	O4-C15	2.81	1.45	1.41
7	D	1376	SCN	C-S	2.83	1.81	1.63
3	D	1372	ATP	C5-C4	2.93	1.47	1.40
5	D	1374	LAB	O2-C1	4.95	1.45	1.34
5	B	1374	LAB	O2-C1	4.96	1.45	1.34

All (38) bond angle outliers are listed below:

Mol	Chain	Res	Type	Atoms	Z	Observed(°)	Ideal(°)
3	B	1372	ATP	N3-C2-N1	-12.33	119.45	128.89
3	D	1372	ATP	N3-C2-N1	-10.98	120.49	128.89
5	B	1374	LAB	O4-C15-O3	-5.35	101.36	109.94
3	D	1372	ATP	C2'-C1'-N9	-5.27	106.23	114.29
3	D	1372	ATP	C4-C5-N7	-3.82	105.96	109.48
5	B	1374	LAB	O2-C1-O1	-3.72	117.50	123.30
5	D	1374	LAB	O4-C15-O3	-3.14	104.91	109.94
5	B	1374	LAB	O1-C1-C2	-3.03	118.21	126.20
3	D	1372	ATP	PA-O3A-PB	-2.98	124.36	132.73
5	D	1374	LAB	C4-C5-C6	-2.95	105.45	112.79
3	B	1372	ATP	PA-O3A-PB	-2.85	124.72	132.73
5	D	1374	LAB	O1-C1-C2	-2.79	118.84	126.20
3	B	1372	ATP	O3'-C3'-C4'	-2.77	102.75	111.05
5	B	1374	LAB	O2-C13-C12	-2.53	101.51	107.80
3	D	1372	ATP	O3'-C3'-C4'	-2.44	103.72	111.05
5	D	1374	LAB	O2-C1-O1	-2.43	119.52	123.30
3	D	1372	ATP	O3'-C3'-C2'	-2.20	104.69	111.83
5	B	1374	LAB	C19-C3-C2	-2.12	115.70	122.42
3	B	1372	ATP	O2B-PB-O3A	2.06	114.43	105.09
3	D	1372	ATP	O2B-PB-O3A	2.08	114.53	105.09

Continued on next page...

Continued from previous page...

Mol	Chain	Res	Type	Atoms	Z	Observed(°)	Ideal(°)
5	D	1374	LAB	C16-N1-C18	2.18	115.89	113.04
5	B	1374	LAB	C8-C7-C6	2.22	129.70	124.96
3	D	1372	ATP	O3G-PG-O2G	2.24	115.90	107.38
5	D	1374	LAB	O2-C13-C14	2.26	113.17	107.61
3	D	1372	ATP	C4'-O4'-C1'	2.30	112.24	109.72
6	B	1375	PEG	C3-O2-C2	2.36	123.44	113.31
3	B	1372	ATP	O4'-C1'-N9	2.38	113.09	108.10
3	B	1372	ATP	O2A-PA-O3A	2.46	116.27	105.09
3	D	1372	ATP	O4'-C1'-N9	2.47	113.28	108.10
3	B	1372	ATP	C2-N1-C6	2.54	123.31	118.77
5	D	1374	LAB	C19-C3-C4	2.56	119.32	115.41
5	D	1374	LAB	C5-C6-C7	2.60	132.94	125.14
5	D	1374	LAB	C8-C7-C6	2.67	130.65	124.96
5	B	1374	LAB	C16-N1-C18	2.67	116.54	113.04
3	D	1372	ATP	C2-N1-C6	3.23	124.54	118.77
5	B	1374	LAB	C19-C3-C4	3.55	120.84	115.41
5	D	1374	LAB	O2-C1-C2	4.09	121.60	111.51
5	B	1374	LAB	O2-C1-C2	5.11	124.12	111.51

There are no chirality outliers.

There are no torsion outliers.

There are no ring outliers.

2 monomers are involved in 4 short contacts:

Mol	Chain	Res	Type	Clashes	Symm-Clashes
3	B	1372	ATP	2	0
3	D	1372	ATP	2	0

5.7 Other polymers [i](#)

There are no such residues in this entry.

5.8 Polymer linkage issues [i](#)

There are no chain breaks in this entry.

6 Fit of model and data [i](#)

6.1 Protein, DNA and RNA chains [i](#)

In the following table, the column labelled ‘#RSRZ> 2’ contains the number (and percentage) of RSRZ outliers, followed by percent RSRZ outliers for the chain as percentile scores relative to all X-ray entries and entries of similar resolution. The OWAB column contains the minimum, median, 95th percentile and maximum values of the occupancy-weighted average B-factor per residue. The column labelled ‘Q< 0.9’ lists the number of (and percentage) of residues with an average occupancy less than 0.9.

Mol	Chain	Analysed	<RSRZ>	#RSRZ>2	OWAB(Å ²)	Q<0.9
1	B	351/377 (93%)	-0.09	1 (0%) 94 97	27, 34, 46, 61	0
1	D	352/377 (93%)	-0.22	2 (0%) 90 95	27, 34, 46, 58	0
2	E	28/32 (87%)	0.36	2 (7%) 19 28	31, 37, 41, 42	0
2	F	28/32 (87%)	0.30	0 100 100	32, 39, 42, 43	0
All	All	759/818 (92%)	-0.12	5 (0%) 89 94	27, 34, 46, 61	0

All (5) RSRZ outliers are listed below:

Mol	Chain	Res	Type	RSRZ
1	D	369	ILE	2.6
1	B	53	TYR	2.4
1	D	5	THR	2.4
2	E	97	LYS	2.0
2	E	73	VAL	2.0

6.2 Non-standard residues in protein, DNA, RNA chains [i](#)

There are no non-standard protein/DNA/RNA residues in this entry.

6.3 Carbohydrates [i](#)

There are no carbohydrates in this entry.

6.4 Ligands [i](#)

In the following table, the Atoms column lists the number of modelled atoms in the group and the number defined in the chemical component dictionary. LLDF column lists the quality of electron density of the group with respect to its neighbouring residues in protein, DNA or RNA chains.

The B-factors column lists the minimum, median, 95th percentile and maximum values of B factors of atoms in the group. The column labelled 'Q< 0.9' lists the number of atoms with occupancy less than 0.9.

Mol	Type	Chain	Res	Atoms	RSCC	RSR	LLDF	B-factors(Å ²)	Q<0.9
7	SCN	D	1375	3/3	0.93	0.21	2.30	57,57,57,58	0
3	ATP	D	1372	31/31	0.98	0.12	0.25	29,35,38,40	0
3	ATP	B	1372	31/31	0.99	0.12	0.21	29,33,36,37	0
5	LAB	B	1374	27/27	0.98	0.13	0.04	27,30,36,37	0
5	LAB	D	1374	27/27	0.97	0.11	-0.37	26,32,38,41	0
6	PEG	D	1377	7/7	0.92	0.10	-0.81	47,49,52,52	0
6	PEG	B	1375	7/7	0.94	0.09	-1.55	44,45,54,56	0
4	CA	B	1373	1/1	0.96	0.03	-6.26	39,39,39,39	0
4	CA	D	1373	1/1	0.98	0.05	-7.12	41,41,41,41	0
7	SCN	B	1377	3/3	0.96	0.07	-7.18	58,58,59,62	0
7	SCN	D	1376	3/3	0.95	0.07	-	69,69,69,70	0
7	SCN	B	1376	3/3	0.97	0.10	-	51,51,51,52	0

6.5 Other polymers [i](#)

There are no such residues in this entry.