



# Full wwPDB X-ray Structure Validation Report ⓘ

Jan 31, 2016 – 10:47 PM GMT

PDB ID : 1V6A  
Title : Crystal Structure of L-lactate dehydrogenase from Cyprinus carpio  
Authors : Watanabe, K.; Motoshima, H.  
Deposited on : 2003-11-28  
Resolution : 2.30 Å(reported)

This is a Full wwPDB X-ray Structure Validation Report for a publicly released PDB entry.  
We welcome your comments at [validation@mail.wwpdb.org](mailto:validation@mail.wwpdb.org)  
A user guide is available at  
<http://wwpdb.org/validation/2016/XrayValidationReportHelp>  
with specific help available everywhere you see the ⓘ symbol.

---

The following versions of software and data (see [references ⓘ](#)) were used in the production of this report:

MolProbity : 4.02b-467  
Mogul : 1.7 (RC4), CSD as536be (2015)  
Xtriage (Phenix) : 1.9-1692  
EDS : rb-20026688  
Percentile statistics : 20151230.v01 (using entries in the PDB archive December 30th 2015)  
Refmac : 5.8.0135  
CCP4 : 6.5.0  
Ideal geometry (proteins) : Engh & Huber (2001)  
Ideal geometry (DNA, RNA) : Parkinson et al. (1996)  
Validation Pipeline (wwPDB-VP) : trunk26865

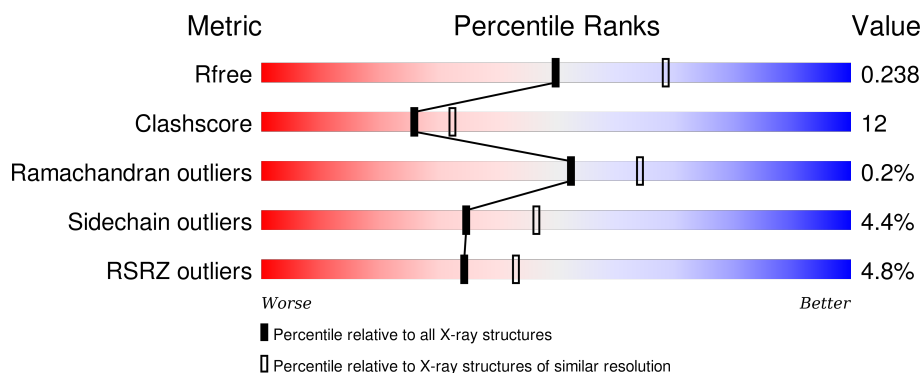
# 1 Overall quality at a glance

The following experimental techniques were used to determine the structure:

## *X-RAY DIFFRACTION*

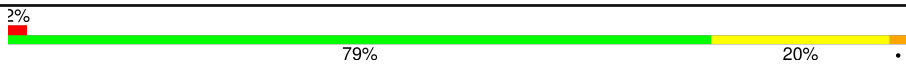
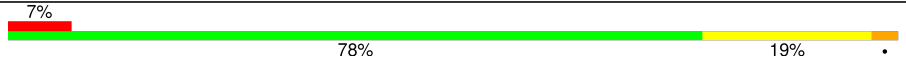
The reported resolution of this entry is 2.30 Å.

Percentile scores (ranging between 0-100) for global validation metrics of the entry are shown in the following graphic. The table shows the number of entries on which the scores are based.



Metric	Whole archive (#Entries)	Similar resolution (#Entries, resolution range(Å))
$R_{free}$	91344	3852 (2.30-2.30)
Clashscore	102246	4452 (2.30-2.30)
Ramachandran outliers	100387	4410 (2.30-2.30)
Sidechain outliers	100360	4409 (2.30-2.30)
RSRZ outliers	91569	3857 (2.30-2.30)

The table below summarises the geometric issues observed across the polymeric chains and their fit to the electron density. The red, orange, yellow and green segments on the lower bar indicate the fraction of residues that contain outliers for  $\geq 3$ , 2, 1 and 0 types of geometric quality criteria. A grey segment represents the fraction of residues that are not modelled. The numeric value for each fraction is indicated below the corresponding segment, with a dot representing fractions  $\leq 5\%$ . The upper red bar (where present) indicates the fraction of residues that have poor fit to the electron density. The numeric value is given above the bar.

Mol	Chain	Length	Quality of chain
1	A	332	
1	B	332	

The following table lists non-polymeric compounds, carbohydrate monomers and non-standard residues in protein, DNA, RNA chains that are outliers for geometric or electron-density-fit criteria:

Mol	Type	Chain	Res	Chirality	Geometry	Clashes	Electron density
2	TRE	A	333	-	-	-	X
2	TRE	A	334	-	-	-	X
2	TRE	B	333	-	-	-	X

## 2 Entry composition [i](#)

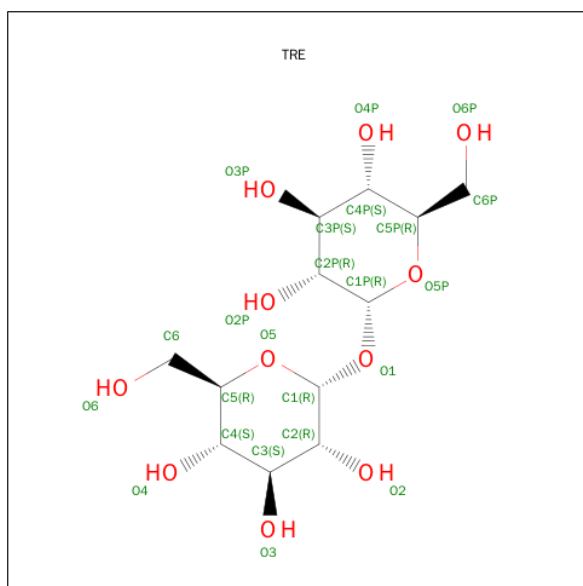
There are 3 unique types of molecules in this entry. The entry contains 5429 atoms, of which 0 are hydrogens and 0 are deuteriums.

In the tables below, the ZeroOcc column contains the number of atoms modelled with zero occupancy, the AltConf column contains the number of residues with at least one atom in alternate conformation and the Trace column contains the number of residues modelled with at most 2 atoms.

- Molecule 1 is a protein called L-lactate dehydrogenase A chain.

Mol	Chain	Residues	Atoms					ZeroOcc	AltConf	Trace
1	A	332	Total	C	N	O	S	0	0	0
			2535	1607	436	477	15			
1	B	332	Total	C	N	O	S	0	0	0
			2535	1607	436	477	15			

- Molecule 2 is TREHALOSE (three-letter code: TRE) (formula: C<sub>12</sub>H<sub>22</sub>O<sub>11</sub>).



Mol	Chain	Residues	Atoms			ZeroOcc	AltConf
2	A	1	Total	C	O	0	0
			23	12	11		
2	A	1	Total	C	O	0	0
			23	12	11		
2	B	1	Total	C	O	0	0
			23	12	11		
2	B	1	Total	C	O	0	0
			23	12	11		

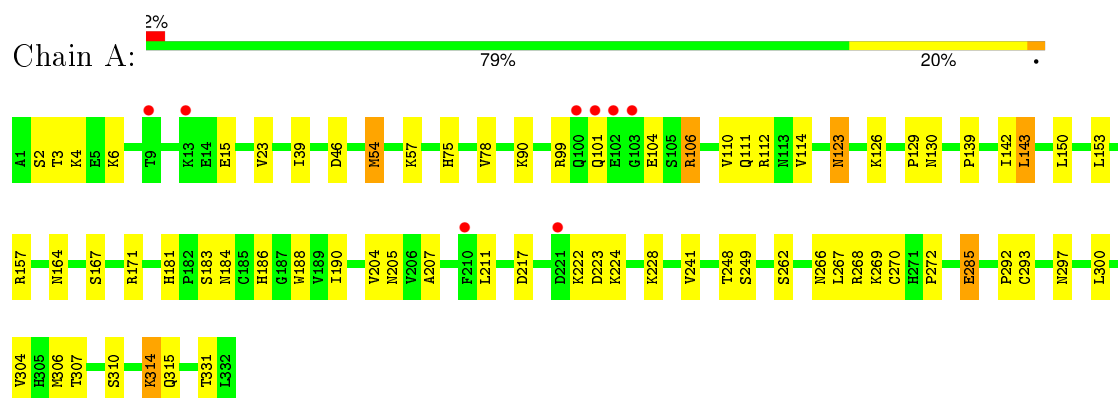
- Molecule 3 is water.

Mol	Chain	Residues	Atoms		ZeroOcc	AltConf
3	A	132	Total 132	O 132	0	0
3	B	135	Total 135	O 135	0	0

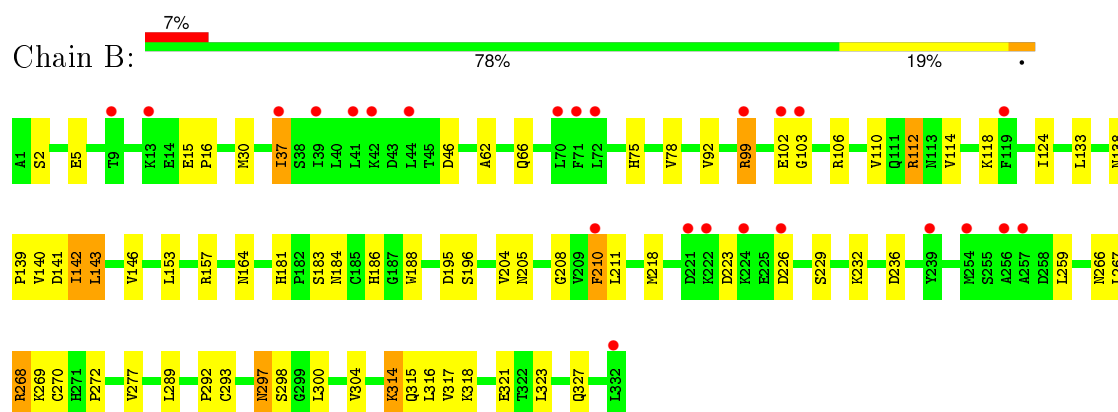
### 3 Residue-property plots [i](#)

These plots are drawn for all protein, RNA and DNA chains in the entry. The first graphic for a chain summarises the proportions of errors displayed in the second graphic. The second graphic shows the sequence view annotated by issues in geometry and electron density. Residues are color-coded according to the number of geometric quality criteria for which they contain at least one outlier: green = 0, yellow = 1, orange = 2 and red = 3 or more. A red dot above a residue indicates a poor fit to the electron density ( $\text{RSRZ} > 2$ ). Stretches of 2 or more consecutive residues without any outlier are shown as a green connector. Residues present in the sample, but not in the model, are shown in grey.

#### • Molecule 1: L-lactate dehydrogenase A chain



#### • Molecule 1: L-lactate dehydrogenase A chain



## 4 Data and refinement statistics

Property	Value	Source
Space group	P 41 21 2	Depositor
Cell constants a, b, c, $\alpha$ , $\beta$ , $\gamma$	156.20 Å   156.20 Å   84.30 Å 90.00°   90.00°   90.00°	Depositor
Resolution (Å)	46.20 – 2.30 46.20 – 2.30	Depositor EDS
% Data completeness (in resolution range)	95.5 (46.20-2.30) 95.6 (46.20-2.30)	Depositor EDS
$R_{merge}$	(Not available)	Depositor
$R_{sym}$	(Not available)	Depositor
$\langle I/\sigma(I) \rangle$ <sup>1</sup>	7.16 (at 2.32 Å)	Xtriage
Refinement program	CNS 1.1	Depositor
R, $R_{free}$	0.200   ,   0.238 0.200   ,   0.238	Depositor DCC
$R_{free}$ test set	4489 reflections (10.08%)	DCC
Wilson B-factor (Å <sup>2</sup> )	34.4	Xtriage
Anisotropy	0.567	Xtriage
Bulk solvent $k_{sol}$ (e/Å <sup>3</sup> ), $B_{sol}$ (Å <sup>2</sup> )	0.36 , 42.1	EDS
Estimated twinning fraction	No twinning to report.	Xtriage
L-test for twinning <sup>2</sup>	$\langle  L  \rangle = 0.49$ , $\langle L^2 \rangle = 0.32$	Xtriage
Outliers	0 of 46121 reflections	Xtriage
$F_o, F_c$ correlation	0.95	EDS
Total number of atoms	5429	wwPDB-VP
Average B, all atoms (Å <sup>2</sup> )	39.0	wwPDB-VP

Xtriage's analysis on translational NCS is as follows: *The largest off-origin peak in the Patterson function is 3.82% of the height of the origin peak. No significant pseudotranslation is detected.*

<sup>1</sup>Intensities estimated from amplitudes.

<sup>2</sup>Theoretical values of  $\langle |L| \rangle$ ,  $\langle L^2 \rangle$  for acentric reflections are 0.5, 0.375 respectively for untwinned datasets, and 0.333, 0.2 for perfectly twinned datasets.

## 5 Model quality

### 5.1 Standard geometry

Bond lengths and bond angles in the following residue types are not validated in this section: TRE

The Z score for a bond length (or angle) is the number of standard deviations the observed value is removed from the expected value. A bond length (or angle) with  $|Z| > 5$  is considered an outlier worth inspection. RMSZ is the root-mean-square of all Z scores of the bond lengths (or angles).

Mol	Chain	Bond lengths		Bond angles	
		RMSZ	$\# Z  > 5$	RMSZ	$\# Z  > 5$
1	A	0.38	0/2579	0.60	0/3492
1	B	0.38	0/2579	0.60	0/3492
All	All	0.38	0/5158	0.60	0/6984

There are no bond length outliers.

There are no bond angle outliers.

There are no chirality outliers.

There are no planarity outliers.

### 5.2 Too-close contacts

In the following table, the Non-H and H(model) columns list the number of non-hydrogen atoms and hydrogen atoms in the chain respectively. The H(added) column lists the number of hydrogen atoms added and optimized by MolProbity. The Clashes column lists the number of clashes within the asymmetric unit, whereas Symm-Clashes lists symmetry related clashes.

Mol	Chain	Non-H	H(model)	H(added)	Clashes	Symm-Clashes
1	A	2535	0	2604	66	0
1	B	2535	0	2604	79	0
2	A	46	0	42	2	0
2	B	46	0	42	2	0
3	A	132	0	0	1	0
3	B	135	0	0	10	0
All	All	5429	0	5292	130	0

The all-atom clashscore is defined as the number of clashes found per 1000 atoms (including hydrogen atoms). The all-atom clashscore for this structure is 12.

All (130) close contacts within the same asymmetric unit are listed below, sorted by their clash



magnitude.

Atom-1	Atom-2	Interatomic distance (Å)	Clash overlap (Å)
1:A:184:ASN:HD21	1:B:269:LYS:HA	1.16	1.09
1:A:224:LYS:HA	1:A:224:LYS:HE2	1.40	1.00
1:B:268:ARG:HB2	1:B:268:ARG:HH21	1.27	0.98
1:B:268:ARG:HB2	1:B:268:ARG:NH2	1.77	0.98
1:A:184:ASN:ND2	1:B:269:LYS:HA	1.79	0.97
1:A:106:ARG:HB3	1:A:106:ARG:HH21	1.30	0.93
1:A:269:LYS:HA	1:B:184:ASN:ND2	1.87	0.89
1:A:184:ASN:HD21	1:B:269:LYS:CA	1.85	0.89
1:A:190:ILE:HD13	1:A:306:MET:HE3	1.63	0.81
1:B:268:ARG:CB	1:B:268:ARG:HH21	1.93	0.81
1:A:190:ILE:HG21	1:A:306:MET:HE1	1.65	0.78
1:A:106:ARG:HB3	1:A:106:ARG:NH2	2.00	0.75
1:A:184:ASN:ND2	1:B:270:CYS:H	1.85	0.73
1:B:62:ALA:O	1:B:66:GLN:HG3	1.88	0.72
1:B:314:LYS:HA	1:B:314:LYS:NZ	2.06	0.70
1:A:139:PRO:HG2	1:A:142:ILE:HG22	1.72	0.70
1:B:210:PHE:HB2	3:B:341:HOH:O	1.92	0.69
1:B:92:VAL:HG11	1:B:124:ILE:HD13	1.74	0.68
1:A:224:LYS:HE2	1:A:224:LYS:CA	2.21	0.68
1:B:142:ILE:HD13	1:B:142:ILE:O	1.93	0.67
1:A:266:ASN:HD21	1:A:268:ARG:CZ	2.09	0.66
1:A:269:LYS:HA	1:B:184:ASN:HD21	1.59	0.66
1:A:266:ASN:HD21	1:A:268:ARG:NH1	1.95	0.65
1:B:292:PRO:HG2	1:B:304:VAL:HB	1.79	0.65
1:B:266:ASN:HD22	1:B:297:ASN:H	1.44	0.64
1:A:111:GLN:HE22	1:A:331:THR:H	1.44	0.64
1:A:139:PRO:HG2	1:A:142:ILE:CG2	2.27	0.63
1:A:181:HIS:CD2	1:A:183:SER:H	2.17	0.62
1:A:269:LYS:CA	1:B:184:ASN:HD21	2.12	0.62
1:A:54:MET:HG3	1:A:57:LYS:HB3	1.82	0.61
1:B:142:ILE:HD13	1:B:142:ILE:C	2.20	0.61
1:A:164:ASN:HA	1:A:272:PRO:HG2	1.81	0.60
1:B:210:PHE:HB3	3:B:369:HOH:O	2.01	0.60
1:B:205:ASN:HD22	1:B:208:GLY:H	1.50	0.59
1:A:269:LYS:CB	1:B:184:ASN:HD21	2.16	0.58
1:B:112:ARG:HH11	1:B:112:ARG:HG2	1.67	0.58
1:A:54:MET:O	1:A:54:MET:HG2	2.04	0.58
1:A:310:SER:O	1:A:314:LYS:HD3	2.03	0.58
1:A:99:ARG:HD3	2:A:334:TRE:O3P	2.03	0.58
1:B:266:ASN:ND2	1:B:297:ASN:H	2.01	0.58
2:B:334:TRE:H6P2	3:B:456:HOH:O	2.04	0.57

*Continued on next page...*

*Continued from previous page...*

Atom-1	Atom-2	Interatomic distance (Å)	Clash overlap (Å)
1:A:181:HIS:HD2	1:A:183:SER:H	1.49	0.57
1:B:218:MET:HA	1:B:223:ASP:OD2	2.04	0.57
1:A:54:MET:CG	1:A:57:LYS:HB3	2.35	0.56
1:A:184:ASN:ND2	1:B:270:CYS:N	2.52	0.56
1:A:269:LYS:CA	1:B:184:ASN:ND2	2.64	0.56
1:B:110:VAL:O	1:B:114:VAL:HG23	2.05	0.56
1:A:184:ASN:CG	1:B:270:CYS:H	2.09	0.56
1:B:277:VAL:HG21	1:B:289:LEU:HD12	1.86	0.55
1:B:314:LYS:HA	1:B:314:LYS:HZ2	1.70	0.55
1:A:190:ILE:HD13	1:A:306:MET:CE	2.35	0.54
1:A:270:CYS:H	1:B:184:ASN:CG	2.11	0.53
1:A:285:GLU:N	1:A:285:GLU:OE2	2.41	0.53
1:A:292:PRO:HG2	1:A:304:VAL:HB	1.90	0.53
1:A:129:PRO:O	1:A:157:ARG:NH2	2.43	0.51
1:A:130:ASN:HA	1:A:157:ARG:NH2	2.24	0.51
1:B:318:LYS:HD2	3:B:452:HOH:O	2.10	0.51
1:B:267:LEU:HD13	1:B:269:LYS:HE3	1.92	0.51
1:A:266:ASN:HD22	1:A:297:ASN:H	1.59	0.51
1:B:153:LEU:HD22	1:B:157:ARG:NH2	2.25	0.51
1:B:186:HIS:O	1:B:204:VAL:HA	2.11	0.50
1:B:268:ARG:CB	1:B:268:ARG:NH2	2.60	0.50
1:B:139:PRO:HG2	1:B:142:ILE:CG2	2.41	0.50
1:A:78:VAL:HG12	2:A:333:TRE:H6P2	1.94	0.49
1:B:323:LEU:O	1:B:327:GLN:HG3	2.12	0.49
1:A:270:CYS:H	1:B:184:ASN:ND2	2.10	0.49
1:B:15:GLU:HG3	1:B:16:PRO:HD2	1.95	0.49
1:B:30:MET:HE3	3:B:392:HOH:O	2.11	0.49
1:B:188:TRP:CZ3	1:B:272:PRO:HD3	2.48	0.49
1:B:164:ASN:HA	1:B:272:PRO:HG2	1.95	0.49
1:B:267:LEU:O	1:B:268:ARG:HB3	2.13	0.49
1:A:266:ASN:ND2	1:A:297:ASN:H	2.11	0.49
1:B:118:LYS:NZ	3:B:462:HOH:O	2.42	0.49
1:B:210:PHE:H	1:B:210:PHE:HD2	1.60	0.48
1:A:2:SER:O	1:A:6:LYS:HG3	2.14	0.48
1:B:297:ASN:C	1:B:297:ASN:HD22	2.16	0.47
1:B:181:HIS:HD2	1:B:183:SER:H	1.63	0.47
1:A:222:LYS:O	1:A:224:LYS:HE3	2.15	0.47
1:B:317:VAL:O	1:B:321:GLU:HG3	2.14	0.47
1:A:101:GLN:O	1:A:104:GLU:HB3	2.13	0.47
1:B:211:LEU:HD12	1:B:211:LEU:N	2.29	0.47
1:B:205:ASN:ND2	1:B:208:GLY:H	2.12	0.47

*Continued on next page...*

*Continued from previous page...*

Atom-1	Atom-2	Interatomic distance (Å)	Clash overlap (Å)
1:B:112:ARG:NH1	1:B:112:ARG:HG2	2.30	0.47
1:B:181:HIS:CD2	1:B:183:SER:H	2.33	0.47
1:A:267:LEU:O	1:B:181:HIS:HB2	2.14	0.47
1:B:226:ASP:OD2	1:B:229:SER:HB3	2.15	0.47
1:B:297:ASN:HD22	1:B:298:SER:N	2.13	0.46
1:A:167:SER:O	1:A:171:ARG:HG3	2.16	0.46
1:B:106:ARG:O	1:B:110:VAL:HG23	2.15	0.46
1:B:270:CYS:HA	1:B:293:CYS:O	2.16	0.46
1:B:314:LYS:CA	1:B:314:LYS:HZ3	2.28	0.46
1:A:23:VAL:HG11	1:A:39:ILE:HD13	1.98	0.45
1:A:110:VAL:O	1:A:114:VAL:HG23	2.16	0.45
1:A:190:ILE:CD1	1:A:306:MET:HE3	2.43	0.44
1:B:37:ILE:O	1:B:37:ILE:HD13	2.17	0.44
1:B:46:ASP:O	1:B:75:HIS:HB3	2.17	0.44
1:A:205:ASN:HA	1:A:211:LEU:HD13	1.99	0.44
1:B:138:ASN:ND2	3:B:463:HOH:O	2.48	0.43
1:A:186:HIS:O	1:A:204:VAL:HA	2.18	0.43
1:A:262:SER:HA	1:A:267:LEU:HD12	1.99	0.43
1:A:217:ASP:O	1:A:223:ASP:HB2	2.19	0.43
1:B:124:ILE:HG21	1:B:133:LEU:HD21	2.01	0.43
1:A:123:ASN:HA	1:A:123:ASN:HD22	1.72	0.43
1:A:188:TRP:CZ3	1:A:272:PRO:HD3	2.54	0.43
1:B:99:ARG:HG2	1:B:99:ARG:O	2.19	0.43
1:A:241:VAL:HB	1:A:248:THR:HG22	2.01	0.42
1:B:78:VAL:HG12	2:B:333:TRE:H6P2	2.00	0.42
1:B:143:LEU:HA	1:B:143:LEU:HD12	1.79	0.42
1:A:46:ASP:O	1:A:75:HIS:HB3	2.20	0.42
1:A:293:CYS:SG	1:A:300:LEU:HD11	2.59	0.42
1:A:181:HIS:HD2	1:A:183:SER:OG	2.02	0.42
1:B:196:SER:HB2	3:B:394:HOH:O	2.20	0.42
1:B:2:SER:OG	1:B:5:GLU:HG3	2.20	0.41
1:B:140:VAL:HG13	1:B:141:ASP:N	2.36	0.41
1:A:142:ILE:HG23	1:A:143:LEU:HD13	2.02	0.41
1:A:315:GLN:HB3	3:A:386:HOH:O	2.20	0.41
1:B:102:GLU:O	1:B:103:GLY:C	2.59	0.41
1:A:207:ALA:HA	1:B:188:TRP:CE2	2.56	0.41
1:B:268:ARG:CA	1:B:268:ARG:HH21	2.32	0.41
1:B:314:LYS:CA	1:B:314:LYS:NZ	2.78	0.41
1:B:232:LYS:HD3	1:B:236:ASP:OD2	2.20	0.41
1:B:293:CYS:SG	1:B:300:LEU:HD11	2.61	0.41
1:A:268:ARG:HG3	3:B:389:HOH:O	2.19	0.41

*Continued on next page...*

*Continued from previous page...*

Atom-1	Atom-2	Interatomic distance (Å)	Clash overlap (Å)
1:B:99:ARG:H	1:B:99:ARG:HD3	1.86	0.41
1:A:3:THR:HG23	1:A:4:LYS:N	2.36	0.41
1:A:126:LYS:CB	1:A:126:LYS:NZ	2.84	0.41
1:B:315:GLN:HB3	3:B:365:HOH:O	2.20	0.41
1:A:224:LYS:CE	1:A:224:LYS:CA	2.94	0.40
1:A:207:ALA:HA	1:B:188:TRP:CZ2	2.56	0.40
1:B:142:ILE:HD13	1:B:146:VAL:HG23	2.02	0.40

There are no symmetry-related clashes.

## 5.3 Torsion angles [i](#)

### 5.3.1 Protein backbone [i](#)

In the following table, the Percentiles column shows the percent Ramachandran outliers of the chain as a percentile score with respect to all X-ray entries followed by that with respect to entries of similar resolution.

The Analysed column shows the number of residues for which the backbone conformation was analysed, and the total number of residues.

Mol	Chain	Analysed	Favoured	Allowed	Outliers	Percentiles	
1	A	330/332 (99%)	324 (98%)	5 (2%)	1 (0%)	46	57
1	B	330/332 (99%)	316 (96%)	14 (4%)	0	100	100
All	All	660/664 (99%)	640 (97%)	19 (3%)	1 (0%)	52	64

All (1) Ramachandran outliers are listed below:

Mol	Chain	Res	Type
1	A	249	SER

### 5.3.2 Protein sidechains [i](#)

In the following table, the Percentiles column shows the percent sidechain outliers of the chain as a percentile score with respect to all X-ray entries followed by that with respect to entries of similar resolution.

The Analysed column shows the number of residues for which the sidechain conformation was analysed, and the total number of residues.

Mol	Chain	Analysed	Rotameric	Outliers	Percentiles	
1	A	286/286 (100%)	273 (96%)	13 (4%)	34	46
1	B	286/286 (100%)	274 (96%)	12 (4%)	36	49
All	All	572/572 (100%)	547 (96%)	25 (4%)	35	46

All (25) residues with a non-rotameric sidechain are listed below:

Mol	Chain	Res	Type
1	A	15	GLU
1	A	54	MET
1	A	90	LYS
1	A	106	ARG
1	A	112	ARG
1	A	123	ASN
1	A	143	LEU
1	A	150	LEU
1	A	153	LEU
1	A	228	LYS
1	A	285	GLU
1	A	307	THR
1	A	314	LYS
1	B	37	ILE
1	B	99	ARG
1	B	112	ARG
1	B	142	ILE
1	B	143	LEU
1	B	195	ASP
1	B	210	PHE
1	B	259	LEU
1	B	268	ARG
1	B	297	ASN
1	B	314	LYS
1	B	316	LEU

Some sidechains can be flipped to improve hydrogen bonding and reduce clashes. All (19) such sidechains are listed below:

Mol	Chain	Res	Type
1	A	66	GLN
1	A	100	GLN
1	A	101	GLN
1	A	108	ASN
1	A	111	GLN

*Continued on next page...*

*Continued from previous page...*

Mol	Chain	Res	Type
1	A	115	ASN
1	A	123	ASN
1	A	181	HIS
1	A	184	ASN
1	A	266	ASN
1	A	305	HIS
1	B	100	GLN
1	B	101	GLN
1	B	138	ASN
1	B	181	HIS
1	B	184	ASN
1	B	205	ASN
1	B	266	ASN
1	B	297	ASN

### 5.3.3 RNA [i](#)

There are no RNA molecules in this entry.

## 5.4 Non-standard residues in protein, DNA, RNA chains [i](#)

There are no non-standard protein/DNA/RNA residues in this entry.

## 5.5 Carbohydrates [i](#)

There are no carbohydrates in this entry.

## 5.6 Ligand geometry [i](#)

4 ligands are modelled in this entry.

In the following table, the Counts columns list the number of bonds (or angles) for which Mogul statistics could be retrieved, the number of bonds (or angles) that are observed in the model and the number of bonds (or angles) that are defined in the chemical component dictionary. The Link column lists molecule types, if any, to which the group is linked. The Z score for a bond length (or angle) is the number of standard deviations the observed value is removed from the expected value. A bond length (or angle) with  $|Z| > 2$  is considered an outlier worth inspection. RMSZ is the root-mean-square of all Z scores of the bond lengths (or angles).

Mol	Type	Chain	Res	Link	Bond lengths			Bond angles		
					Counts	RMSZ	# Z  > 2	Counts	RMSZ	# Z  > 2
2	TRE	A	333	-	24,24,24	1.68	4 (16%)	35,35,35	2.54	6 (17%)
2	TRE	A	334	-	24,24,24	1.54	4 (16%)	35,35,35	2.67	6 (17%)
2	TRE	B	333	-	24,24,24	1.62	5 (20%)	35,35,35	2.62	6 (17%)
2	TRE	B	334	-	24,24,24	1.61	4 (16%)	35,35,35	2.58	6 (17%)

In the following table, the Chirals column lists the number of chiral outliers, the number of chiral centers analysed, the number of these observed in the model and the number defined in the chemical component dictionary. Similar counts are reported in the Torsion and Rings columns. '-' means no outliers of that kind were identified.

Mol	Type	Chain	Res	Link	Chirals	Torsions	Rings
2	TRE	A	333	-	-	0/8/48/48	0/2/2/2
2	TRE	A	334	-	-	0/8/48/48	0/2/2/2
2	TRE	B	333	-	-	0/8/48/48	0/2/2/2
2	TRE	B	334	-	-	0/8/48/48	0/2/2/2

All (17) bond length outliers are listed below:

Mol	Chain	Res	Type	Atoms	Z	Observed(Å)	Ideal(Å)
2	B	333	TRE	C4-C5	2.03	1.57	1.53
2	B	333	TRE	O5P-C1P	2.66	1.48	1.41
2	A	334	TRE	C4P-C5P	2.74	1.58	1.53
2	A	334	TRE	O5-C1	2.82	1.49	1.41
2	A	334	TRE	C3P-C2P	2.88	1.59	1.52
2	B	333	TRE	C3P-C2P	2.93	1.60	1.52
2	B	334	TRE	O5-C1	2.97	1.49	1.41
2	A	333	TRE	O5-C1	2.97	1.49	1.41
2	B	334	TRE	C3P-C2P	3.04	1.60	1.52
2	B	333	TRE	C4P-C5P	3.12	1.59	1.53
2	A	334	TRE	O5P-C1P	3.14	1.49	1.41
2	B	334	TRE	O5P-C1P	3.14	1.49	1.41
2	A	333	TRE	C3P-C2P	3.16	1.60	1.52
2	A	333	TRE	O5P-C1P	3.19	1.50	1.41
2	B	334	TRE	C4P-C5P	3.27	1.60	1.53
2	B	333	TRE	O5-C1	3.37	1.50	1.41
2	A	333	TRE	C4P-C5P	3.53	1.60	1.53

All (24) bond angle outliers are listed below:

Mol	Chain	Res	Type	Atoms	Z	Observed(°)	Ideal(°)
2	B	333	TRE	O1-C1P-O5P	-4.60	99.03	110.68

*Continued on next page...*

*Continued from previous page...*

Mol	Chain	Res	Type	Atoms	Z	Observed(°)	Ideal(°)
2	B	334	TRE	O1-C1P-O5P	-4.48	99.33	110.68
2	A	334	TRE	O1-C1P-O5P	-4.01	100.53	110.68
2	A	333	TRE	O1-C1P-O5P	-3.97	100.64	110.68
2	A	334	TRE	C4-C3-C2	-2.85	105.48	110.79
2	A	334	TRE	C4P-C3P-C2P	-2.82	105.54	110.79
2	B	334	TRE	C1P-C2P-C3P	-2.80	104.44	109.97
2	B	334	TRE	C4-C3-C2	-2.78	105.60	110.79
2	A	333	TRE	C4P-C3P-C2P	-2.73	105.69	110.79
2	B	333	TRE	C1P-C2P-C3P	-2.59	104.86	109.97
2	A	334	TRE	C1P-C2P-C3P	-2.58	104.89	109.97
2	B	333	TRE	C4P-C3P-C2P	-2.49	106.15	110.79
2	B	333	TRE	C4-C3-C2	-2.45	106.22	110.79
2	B	334	TRE	C4P-C3P-C2P	-2.40	106.32	110.79
2	A	333	TRE	C4-C3-C2	-2.37	106.37	110.79
2	A	333	TRE	C1P-C2P-C3P	-2.22	105.59	109.97
2	B	333	TRE	C1P-O1-C1	4.51	121.47	114.39
2	A	333	TRE	C1P-O1-C1	4.67	121.72	114.39
2	B	334	TRE	C1P-O1-C1	5.27	122.66	114.39
2	A	334	TRE	C1P-O1-C1	6.37	124.39	114.39
2	B	334	TRE	O1-C1P-C2P	11.85	136.93	108.10
2	A	334	TRE	O1-C1P-C2P	12.05	137.43	108.10
2	A	333	TRE	O1-C1P-C2P	12.28	137.98	108.10
2	B	333	TRE	O1-C1P-C2P	12.65	138.88	108.10

There are no chirality outliers.

There are no torsion outliers.

There are no ring outliers.

4 monomers are involved in 4 short contacts:

Mol	Chain	Res	Type	Clashes	Symm-Clashes
2	A	333	TRE	1	0
2	A	334	TRE	1	0
2	B	333	TRE	1	0
2	B	334	TRE	1	0

## 5.7 Other polymers ⓘ

There are no such residues in this entry.



## 5.8 Polymer linkage issues ⓘ

There are no chain breaks in this entry.

## 6 Fit of model and data ⓘ

### 6.1 Protein, DNA and RNA chains ⓘ

In the following table, the column labelled ‘#RSRZ> 2’ contains the number (and percentage) of RSRZ outliers, followed by percent RSRZ outliers for the chain as percentile scores relative to all X-ray entries and entries of similar resolution. The OWAB column contains the minimum, median, 95<sup>th</sup> percentile and maximum values of the occupancy-weighted average B-factor per residue. The column labelled ‘Q< 0.9’ lists the number of (and percentage) of residues with an average occupancy less than 0.9.

Mol	Chain	Analysed	<RSRZ>	#RSRZ>2	OWAB(Å <sup>2</sup> )	Q<0.9
1	A	332/332 (100%)	-0.08	8 (2%) 62 71	25, 36, 56, 69	0
1	B	332/332 (100%)	0.16	24 (7%) 18 26	27, 37, 55, 74	0
All	All	664/664 (100%)	0.04	32 (4%) 34 43	25, 37, 56, 74	0

All (32) RSRZ outliers are listed below:

Mol	Chain	Res	Type	RSRZ
1	B	102	GLU	4.6
1	B	210	PHE	4.1
1	A	13	LYS	3.5
1	B	99	ARG	3.5
1	B	221	ASP	3.3
1	B	41	LEU	2.9
1	B	42	LYS	2.9
1	A	210	PHE	2.8
1	B	103	GLY	2.7
1	B	224	LYS	2.7
1	B	332	LEU	2.6
1	B	222	LYS	2.6
1	A	9	THR	2.5
1	A	102	GLU	2.5
1	B	254	MET	2.5
1	A	100	GLN	2.4
1	B	256	ALA	2.4
1	A	221	ASP	2.3
1	B	119	PHE	2.3
1	B	70	LEU	2.3
1	A	103	GLY	2.3
1	B	9	THR	2.3
1	A	101	GLN	2.2
1	B	13	LYS	2.2

*Continued on next page...*

*Continued from previous page...*

Mol	Chain	Res	Type	RSRZ
1	B	39	ILE	2.2
1	B	257	ALA	2.2
1	B	71	PHE	2.2
1	B	226	ASP	2.1
1	B	44	LEU	2.1
1	B	239	TYR	2.0
1	B	37	ILE	2.0
1	B	72	LEU	2.0

## 6.2 Non-standard residues in protein, DNA, RNA chains [i](#)

There are no non-standard protein/DNA/RNA residues in this entry.

## 6.3 Carbohydrates [i](#)

There are no carbohydrates in this entry.

## 6.4 Ligands [i](#)

In the following table, the Atoms column lists the number of modelled atoms in the group and the number defined in the chemical component dictionary. LLDF column lists the quality of electron density of the group with respect to its neighbouring residues in protein, DNA or RNA chains. The B-factors column lists the minimum, median, 95<sup>th</sup> percentile and maximum values of B factors of atoms in the group. The column labelled 'Q< 0.9' lists the number of atoms with occupancy less than 0.9.

Mol	Type	Chain	Res	Atoms	RSCC	RSR	LLDF	B-factors( $\text{\AA}^2$ )	Q<0.9
2	TRE	A	333	23/23	0.85	0.21	6.71	61,63,68,69	0
2	TRE	B	333	23/23	0.89	0.23	2.78	64,69,70,71	0
2	TRE	A	334	23/23	0.89	0.23	2.43	68,70,75,75	0
2	TRE	B	334	23/23	0.90	0.14	-0.04	49,55,66,69	0

## 6.5 Other polymers [i](#)

There are no such residues in this entry.