



Full wwPDB X-ray Structure Validation Report ⓘ

Feb 1, 2016 – 01:52 PM GMT

PDB ID : 3VBM
Title : Crystal Structure of the S84T mutant of AntD, an N-acyltransferase from Bacillus cereus in complex with dTDP and Coenzyme A
Authors : Kubiak, R.L.; Holden, H.M.
Deposited on : 2012-01-02
Resolution : 1.90 Å(reported)

This is a Full wwPDB X-ray Structure Validation Report for a publicly released PDB entry.
We welcome your comments at validation@mail.wwpdb.org
A user guide is available at
<http://wwpdb.org/validation/2016/XrayValidationReportHelp>
with specific help available everywhere you see the ⓘ symbol.

The following versions of software and data (see [references ⓘ](#)) were used in the production of this report:

MolProbity : 4.02b-467
Mogul : 1.7 (RC4), CSD as536be (2015)
Xtriage (Phenix) : 1.9-1692
EDS : rb-20026688
Percentile statistics : 20151230.v01 (using entries in the PDB archive December 30th 2015)
Refmac : 5.8.0135
CCP4 : 6.5.0
Ideal geometry (proteins) : Engh & Huber (2001)
Ideal geometry (DNA, RNA) : Parkinson et al. (1996)
Validation Pipeline (wwPDB-VP) : trunk26865

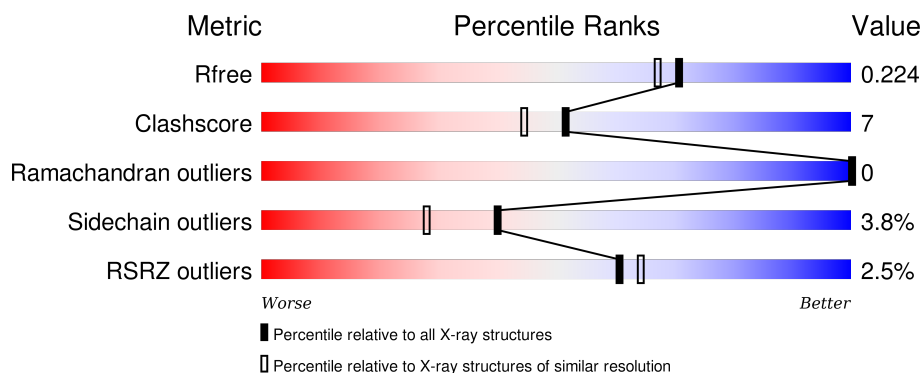
1 Overall quality at a glance

The following experimental techniques were used to determine the structure:

X-RAY DIFFRACTION

The reported resolution of this entry is 1.90 Å.

Percentile scores (ranging between 0-100) for global validation metrics of the entry are shown in the following graphic. The table shows the number of entries on which the scores are based.



Metric	Whole archive (#Entries)	Similar resolution (#Entries, resolution range(Å))
R_{free}	91344	4755 (1.90-1.90)
Clashscore	102246	5398 (1.90-1.90)
Ramachandran outliers	100387	5338 (1.90-1.90)
Sidechain outliers	100360	5339 (1.90-1.90)
RSRZ outliers	91569	4766 (1.90-1.90)

The table below summarises the geometric issues observed across the polymeric chains and their fit to the electron density. The red, orange, yellow and green segments on the lower bar indicate the fraction of residues that contain outliers for ≥ 3 , 2, 1 and 0 types of geometric quality criteria. A grey segment represents the fraction of residues that are not modelled. The numeric value for each fraction is indicated below the corresponding segment, with a dot representing fractions $\leq 5\%$. The upper red bar (where present) indicates the fraction of residues that have poor fit to the electron density. The numeric value is given above the bar.

Mol	Chain	Length	Quality of chain
1	A	205	
1	C	205	
1	E	205	

2 Entry composition

There are 6 unique types of molecules in this entry. The entry contains 4970 atoms, of which 0 are hydrogens and 0 are deuteriums.

In the tables below, the ZeroOcc column contains the number of atoms modelled with zero occupancy, the AltConf column contains the number of residues with at least one atom in alternate conformation and the Trace column contains the number of residues modelled with at most 2 atoms.

- Molecule 1 is a protein called Galactoside O-acetyltransferase.

Mol	Chain	Residues	Atoms					ZeroOcc	AltConf	Trace
1	A	187	Total	C	N	O	S	0	7	0
			1484	965	245	267	7			
1	C	188	Total	C	N	O	S	0	1	0
			1456	940	241	268	7			
1	E	193	Total	C	N	O	S	0	2	0
			1508	979	249	273	7			

There are 54 discrepancies between the modelled and reference sequences:

Chain	Residue	Modelled	Actual	Comment	Reference
A	-16	MET	-	EXPRESSION TAG	UNP D7WGJ0
A	-15	GLY	-	EXPRESSION TAG	UNP D7WGJ0
A	-14	SER	-	EXPRESSION TAG	UNP D7WGJ0
A	-13	HIS	-	EXPRESSION TAG	UNP D7WGJ0
A	-12	HIS	-	EXPRESSION TAG	UNP D7WGJ0
A	-11	HIS	-	EXPRESSION TAG	UNP D7WGJ0
A	-10	HIS	-	EXPRESSION TAG	UNP D7WGJ0
A	-9	HIS	-	EXPRESSION TAG	UNP D7WGJ0
A	-8	HIS	-	EXPRESSION TAG	UNP D7WGJ0
A	-7	GLU	-	EXPRESSION TAG	UNP D7WGJ0
A	-6	ASN	-	EXPRESSION TAG	UNP D7WGJ0
A	-5	LEU	-	EXPRESSION TAG	UNP D7WGJ0
A	-4	TYR	-	EXPRESSION TAG	UNP D7WGJ0
A	-3	PHE	-	EXPRESSION TAG	UNP D7WGJ0
A	-2	GLN	-	EXPRESSION TAG	UNP D7WGJ0
A	-1	GLY	-	EXPRESSION TAG	UNP D7WGJ0
A	0	HIS	-	EXPRESSION TAG	UNP D7WGJ0
A	84	THR	SER	ENGINEERED MUTATION	UNP D7WGJ0
C	-16	MET	-	EXPRESSION TAG	UNP D7WGJ0
C	-15	GLY	-	EXPRESSION TAG	UNP D7WGJ0
C	-14	SER	-	EXPRESSION TAG	UNP D7WGJ0
C	-13	HIS	-	EXPRESSION TAG	UNP D7WGJ0
C	-12	HIS	-	EXPRESSION TAG	UNP D7WGJ0

Continued on next page...

Continued from previous page...

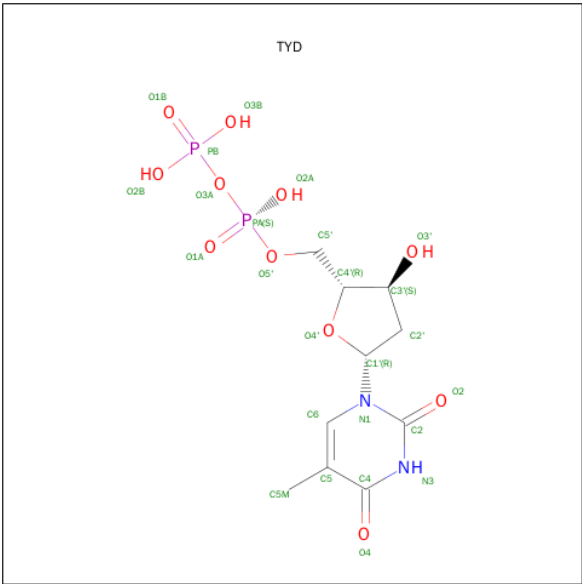
Chain	Residue	Modelled	Actual	Comment	Reference
C	-11	HIS	-	EXPRESSION TAG	UNP D7WGJ0
C	-10	HIS	-	EXPRESSION TAG	UNP D7WGJ0
C	-9	HIS	-	EXPRESSION TAG	UNP D7WGJ0
C	-8	HIS	-	EXPRESSION TAG	UNP D7WGJ0
C	-7	GLU	-	EXPRESSION TAG	UNP D7WGJ0
C	-6	ASN	-	EXPRESSION TAG	UNP D7WGJ0
C	-5	LEU	-	EXPRESSION TAG	UNP D7WGJ0
C	-4	TYR	-	EXPRESSION TAG	UNP D7WGJ0
C	-3	PHE	-	EXPRESSION TAG	UNP D7WGJ0
C	-2	GLN	-	EXPRESSION TAG	UNP D7WGJ0
C	-1	GLY	-	EXPRESSION TAG	UNP D7WGJ0
C	0	HIS	-	EXPRESSION TAG	UNP D7WGJ0
C	84	THR	SER	ENGINEERED MUTATION	UNP D7WGJ0
E	-16	MET	-	EXPRESSION TAG	UNP D7WGJ0
E	-15	GLY	-	EXPRESSION TAG	UNP D7WGJ0
E	-14	SER	-	EXPRESSION TAG	UNP D7WGJ0
E	-13	HIS	-	EXPRESSION TAG	UNP D7WGJ0
E	-12	HIS	-	EXPRESSION TAG	UNP D7WGJ0
E	-11	HIS	-	EXPRESSION TAG	UNP D7WGJ0
E	-10	HIS	-	EXPRESSION TAG	UNP D7WGJ0
E	-9	HIS	-	EXPRESSION TAG	UNP D7WGJ0
E	-8	HIS	-	EXPRESSION TAG	UNP D7WGJ0
E	-7	GLU	-	EXPRESSION TAG	UNP D7WGJ0
E	-6	ASN	-	EXPRESSION TAG	UNP D7WGJ0
E	-5	LEU	-	EXPRESSION TAG	UNP D7WGJ0
E	-4	TYR	-	EXPRESSION TAG	UNP D7WGJ0
E	-3	PHE	-	EXPRESSION TAG	UNP D7WGJ0
E	-2	GLN	-	EXPRESSION TAG	UNP D7WGJ0
E	-1	GLY	-	EXPRESSION TAG	UNP D7WGJ0
E	0	HIS	-	EXPRESSION TAG	UNP D7WGJ0
E	84	THR	SER	ENGINEERED MUTATION	UNP D7WGJ0

- Molecule 2 is COENZYME A (three-letter code: COA) (formula: $C_{21}H_{36}N_7O_{16}P_3S$).



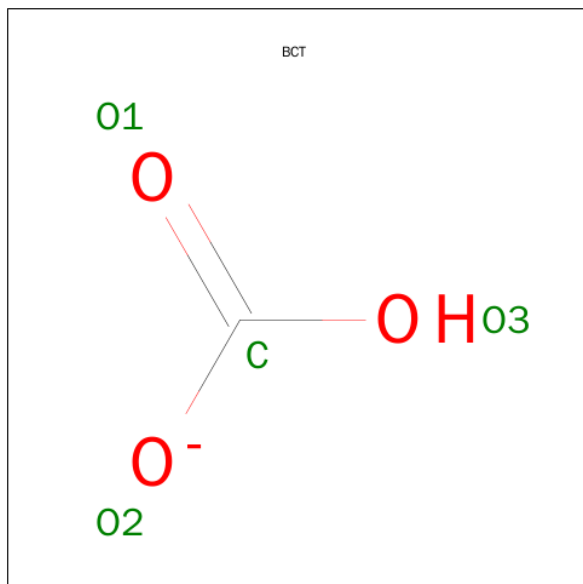
Mol	Chain	Residues	Atoms					ZeroOcc	AltConf	
2	A	1	Total	C	N	O	P	S	0	0
			48	21	7	16	3	1		
2	A	1	Total	C	N	O	P	S	0	0
			48	21	7	16	3	1		
2	C	1	Total	C	N	O	P	S	0	0
			48	21	7	16	3	1		

- Molecule 3 is THYMIDINE-5'-DIPHOSPHATE (three-letter code: TYD) (formula: C₁₀H₁₆N₂O₁₁P₂).



Mol	Chain	Residues	Atoms					ZeroOcc	AltConf
3	A	1	Total	C	N	O	P	0	0
			25	10	2	11	2		
3	C	1	Total	C	N	O	P	0	0
			25	10	2	11	2		
3	E	1	Total	C	N	O	P	0	0
			25	10	2	11	2		

- Molecule 4 is BICARBONATE ION (three-letter code: BCT) (formula: CHO_3).



Mol	Chain	Residues	Atoms		ZeroOcc	AltConf
4	A	1	Total	C O	0	0
			4 1 3			
4	C	1	Total	C O	0	0
			4 1 3			
4	E	1	Total	C O	0	0
			4 1 3			

- Molecule 5 is CHLORIDE ION (three-letter code: CL) (formula: Cl).

Mol	Chain	Residues	Atoms	ZeroOcc	AltConf
5	C	1	Total Cl	0	0
			1 1		

- Molecule 6 is water.

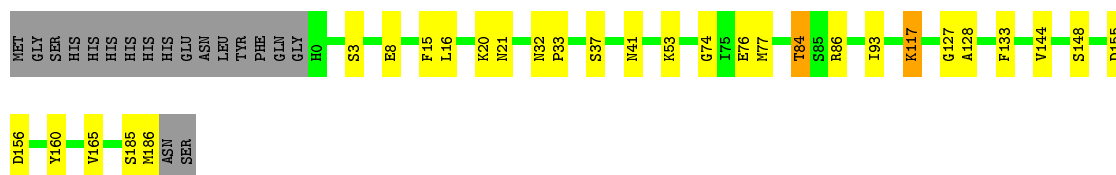
Mol	Chain	Residues	Atoms		ZeroOcc	AltConf
6	A	120	Total 120	O 120	0	0
6	C	91	Total 91	O 91	0	0
6	E	79	Total 79	O 79	0	0

3 Residue-property plots [i](#)


These plots are drawn for all protein, RNA and DNA chains in the entry. The first graphic for a chain summarises the proportions of errors displayed in the second graphic. The second graphic shows the sequence view annotated by issues in geometry and electron density. Residues are color-coded according to the number of geometric quality criteria for which they contain at least one outlier: green = 0, yellow = 1, orange = 2 and red = 3 or more. A red dot above a residue indicates a poor fit to the electron density ($\text{RSRZ} > 2$). Stretches of 2 or more consecutive residues without any outlier are shown as a green connector. Residues present in the sample, but not in the model, are shown in grey.

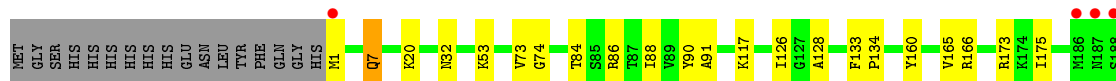
• Molecule 1: Galactoside O-acetyltransferase

Chain A: 




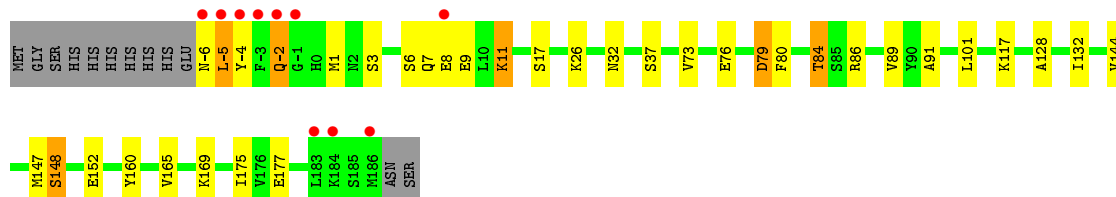
• Molecule 1: Galactoside O-acetyltransferase

Chain C: 



• Molecule 1: Galactoside O-acetyltransferase

Chain E: 



4 Data and refinement statistics

Property	Value	Source
Space group	P 41	Depositor
Cell constants a, b, c, α , β , γ	71.04Å 71.04Å 138.85Å 90.00° 90.00° 90.00°	Depositor
Resolution (Å)	38.78 – 1.90 38.78 – 1.90	Depositor EDS
% Data completeness (in resolution range)	96.8 (38.78-1.90) 96.8 (38.78-1.90)	Depositor EDS
R_{merge}	0.08	Depositor
R_{sym}	0.08	Depositor
$\langle I/\sigma(I) \rangle$ ¹	1.65 (at 1.89Å)	Xtriage
Refinement program	REFMAC 5.5.0109	Depositor
R, R_{free}	0.177 , 0.222 0.178 , 0.224	Depositor DCC
R_{free} test set	2658 reflections (5.35%)	DCC
Wilson B-factor (Å ²)	16.1	Xtriage
Anisotropy	0.069	Xtriage
Bulk solvent k_{sol} (e/Å ³), B_{sol} (Å ²)	0.36 , 49.6	EDS
Estimated twinning fraction	0.047 for h,-k,-l	Xtriage
L-test for twinning ²	$\langle L \rangle = 0.49$, $\langle L^2 \rangle = 0.33$	Xtriage
Outliers	0 of 52310 reflections	Xtriage
F_o, F_c correlation	0.95	EDS
Total number of atoms	4970	wwPDB-VP
Average B, all atoms (Å ²)	20.0	wwPDB-VP

Xtriage's analysis on translational NCS is as follows: *The largest off-origin peak in the Patterson function is 4.71% of the height of the origin peak. No significant pseudotranslation is detected.*

¹Intensities estimated from amplitudes.

²Theoretical values of $\langle |L| \rangle$, $\langle L^2 \rangle$ for acentric reflections are 0.5, 0.375 respectively for untwinned datasets, and 0.333, 0.2 for perfectly twinned datasets.

5 Model quality [i](#)

5.1 Standard geometry [i](#)

Bond lengths and bond angles in the following residue types are not validated in this section: COA, BCT, TYD, CL

The Z score for a bond length (or angle) is the number of standard deviations the observed value is removed from the expected value. A bond length (or angle) with $|Z| > 5$ is considered an outlier worth inspection. RMSZ is the root-mean-square of all Z scores of the bond lengths (or angles).

Mol	Chain	Bond lengths		Bond angles	
		RMSZ	$\# Z > 5$	RMSZ	$\# Z > 5$
1	A	0.60	0/1533	1.07	5/2067 (0.2%)
1	C	0.60	0/1485	1.11	3/2001 (0.1%)
1	E	0.58	0/1543	1.13	7/2081 (0.3%)
All	All	0.59	0/4561	1.10	15/6149 (0.2%)

There are no bond length outliers.

All (15) bond angle outliers are listed below:

Mol	Chain	Res	Type	Atoms	Z	Observed(°)	Ideal(°)
1	C	166	ARG	NE-CZ-NH2	-9.02	115.79	120.30
1	A	117	LYS	CD-CE-NZ	7.73	129.48	111.70
1	A	77	MET	CG-SD-CE	7.39	112.02	100.20
1	C	173	ARG	NE-CZ-NH2	6.92	123.76	120.30
1	E	148[A]	SER	CB-CA-C	6.78	122.99	110.10
1	E	148[B]	SER	CB-CA-C	6.78	122.99	110.10
1	E	84	THR	CA-CB-CG2	6.11	120.95	112.40
1	E	147	MET	CG-SD-CE	-6.01	90.58	100.20
1	A	84	THR	CA-CB-CG2	5.81	120.54	112.40
1	A	155	ASP	CB-CG-OD1	5.61	123.35	118.30
1	A	156	ASP	CB-CG-OD1	5.60	123.34	118.30
1	E	79	ASP	CB-CG-OD1	5.46	123.21	118.30
1	E	152	GLU	CB-CA-C	-5.41	99.58	110.40
1	C	173	ARG	NE-CZ-NH1	-5.36	117.62	120.30
1	E	169	LYS	CD-CE-NZ	-5.20	99.74	111.70

There are no chirality outliers.

There are no planarity outliers.

5.2 Too-close contacts ⓘ

In the following table, the Non-H and H(model) columns list the number of non-hydrogen atoms and hydrogen atoms in the chain respectively. The H(added) column lists the number of hydrogen atoms added and optimized by MolProbity. The Clashes column lists the number of clashes within the asymmetric unit, whereas Symm-Clashes lists symmetry related clashes.

Mol	Chain	Non-H	H(model)	H(added)	Clashes	Symm-Clashes
1	A	1484	0	1555	19	0
1	C	1456	0	1508	14	0
1	E	1508	0	1561	35	0
2	A	96	0	64	6	0
2	C	48	0	32	2	0
3	A	25	0	13	0	0
3	C	25	0	13	0	0
3	E	25	0	13	0	0
4	A	4	0	0	0	0
4	C	4	0	0	0	0
4	E	4	0	0	0	0
5	C	1	0	0	0	0
6	A	120	0	0	1	0
6	C	91	0	0	0	0
6	E	79	0	0	0	0
All	All	4970	0	4759	64	0

The all-atom clashscore is defined as the number of clashes found per 1000 atoms (including hydrogen atoms). The all-atom clashscore for this structure is 7.

All (64) close contacts within the same asymmetric unit are listed below, sorted by their clash magnitude.

Atom-1	Atom-2	Interatomic distance (Å)	Clash overlap (Å)
2:A:190:COA:H31	1:E:84:THR:HG21	1.58	0.84
1:E:-5:LEU:CD2	1:E:1:MET:HG2	2.10	0.81
1:E:-5:LEU:CD2	1:E:1:MET:SD	2.71	0.78
1:E:-5:LEU:HD23	1:E:1:MET:HG2	1.66	0.76
1:A:84:THR:CG2	2:A:189:COA:H21	2.21	0.70
1:A:84:THR:HG22	2:A:189:COA:H21	1.74	0.68
1:E:-5:LEU:CD2	1:E:1:MET:CG	2.72	0.67
1:E:144:VAL:CG1	1:E:148[B]:SER:OG	2.44	0.66
1:C:84:THR:CG2	2:C:189:COA:H21	2.27	0.64
1:A:133[A]:PHE:HB3	6:A:275:HOH:O	1.98	0.63
1:C:7:GLN:O	1:C:7:GLN:NE2	2.33	0.62
1:E:-5:LEU:HD22	1:E:1:MET:SD	2.39	0.61

Continued on next page...

Continued from previous page...

Atom-1	Atom-2	Interatomic distance (Å)	Clash overlap (Å)
2:A:190:COA:H31	1:E:84:THR:CG2	2.29	0.61
1:E:11:LYS:HA	1:E:11:LYS:CE	2.30	0.61
1:C:175:ILE:HG13	1:E:101:LEU:HD23	1.82	0.61
1:A:86:ARG:HD3	1:C:86:ARG:HG2	1.83	0.60
1:E:-5:LEU:HD22	1:E:1:MET:HG2	1.83	0.59
1:E:-5:LEU:HD21	1:E:1:MET:SD	2.41	0.58
1:C:86:ARG:HD3	1:E:86:ARG:HG2	1.84	0.58
1:C:84:THR:HG21	2:C:189:COA:H21	1.86	0.57
1:E:17:SER:HB3	1:E:37:SER:HB2	1.86	0.57
1:E:84:THR:OG1	1:E:128:ALA:N	2.37	0.57
1:E:144:VAL:HG13	1:E:148[B]:SER:OG	2.05	0.56
1:E:-4:TYR:C	1:E:-4:TYR:CD2	2.79	0.55
1:A:84:THR:OG1	1:A:128:ALA:N	2.40	0.55
1:E:73:VAL:HG23	1:E:91:ALA:HB1	1.90	0.54
1:A:144:VAL:HG13	1:A:148[A]:SER:OG	2.09	0.53
1:E:-5:LEU:HD23	1:E:1:MET:CG	2.35	0.53
1:C:175:ILE:CG1	1:E:101:LEU:HD23	2.38	0.53
1:A:160:TYR:HB3	1:A:165:VAL:HB	1.90	0.52
1:A:93:ILE:HG22	2:A:190:COA:H22	1.93	0.51
1:A:148[A]:SER:HB2	1:A:165:VAL:CG1	2.42	0.50
1:E:79:ASP:O	1:E:80:PHE:HB2	2.13	0.49
1:E:76:GLU:OE2	1:E:117:LYS:HE3	2.13	0.48
1:A:148[A]:SER:HB2	1:A:165:VAL:HG12	1.94	0.48
1:E:148[B]:SER:HB2	1:E:165:VAL:CG1	2.43	0.48
1:E:89:VAL:HG22	1:E:132[B]:ILE:HD12	1.96	0.47
1:A:84:THR:HG21	2:A:189:COA:H21	1.94	0.47
1:E:160:TYR:HB3	1:E:165:VAL:HB	1.97	0.47
1:E:-5:LEU:HD22	1:E:1:MET:CG	2.43	0.46
1:A:76:GLU:OE2	1:A:117:LYS:NZ	2.49	0.46
1:E:6:SER:OG	1:E:9:GLU:HG3	2.15	0.46
1:C:160:TYR:HB3	1:C:165:VAL:HB	1.96	0.46
1:A:144:VAL:CG1	1:A:148[A]:SER:OG	2.64	0.46
1:C:84:THR:OG1	1:C:128:ALA:N	2.49	0.46
1:C:53:LYS:O	1:C:74:GLY:HA2	2.17	0.45
1:E:148[B]:SER:HB2	1:E:165:VAL:HG12	1.98	0.44
1:A:16:LEU:HD23	1:A:37[A]:SER:OG	2.16	0.44
1:A:21:ASN:HB3	1:A:41:ASN:ND2	2.33	0.44
1:E:-6:ASN:O	1:E:-2:GLN:CG	2.66	0.43
1:A:148[B]:SER:HB3	1:A:165:VAL:HG12	2.00	0.43
1:C:88:ILE:HG21	1:C:90:TYR:CE2	2.53	0.43
1:A:15:PHE:HA	1:A:33:PRO:O	2.18	0.43

Continued on next page...

Continued from previous page...

Atom-1	Atom-2	Interatomic distance (Å)	Clash overlap (Å)
1:E:148[A]:SER:HB3	1:E:165:VAL:HG12	2.00	0.42
1:C:84:THR:HG23	1:C:126:ILE:O	2.19	0.42
1:E:3:SER:O	1:E:26:LYS:HG3	2.19	0.42
1:C:73:VAL:HG23	1:C:91:ALA:HB1	2.02	0.42
1:E:11:LYS:CE	1:E:11:LYS:CA	2.96	0.41
1:A:53:LYS:O	1:A:74:GLY:HA2	2.20	0.41
1:E:175:ILE:HD13	1:E:175:ILE:HG21	1.74	0.40
1:E:144:VAL:HG12	1:E:148[B]:SER:OG	2.21	0.40
1:A:84:THR:OG1	1:A:127:GLY:C	2.59	0.40
1:E:11:LYS:HE2	1:E:11:LYS:HA	2.02	0.40
1:C:133:PHE:HB3	1:C:134:PRO:CD	2.52	0.40

There are no symmetry-related clashes.

5.3 Torsion angles [i](#)

5.3.1 Protein backbone [i](#)

In the following table, the Percentiles column shows the percent Ramachandran outliers of the chain as a percentile score with respect to all X-ray entries followed by that with respect to entries of similar resolution.

The Analysed column shows the number of residues for which the backbone conformation was analysed, and the total number of residues.

Mol	Chain	Analysed	Favoured	Allowed	Outliers	Percentiles	
1	A	192/205 (94%)	186 (97%)	6 (3%)	0	100	100
1	C	187/205 (91%)	182 (97%)	5 (3%)	0	100	100
1	E	193/205 (94%)	187 (97%)	6 (3%)	0	100	100
All	All	572/615 (93%)	555 (97%)	17 (3%)	0	100	100

There are no Ramachandran outliers to report.

5.3.2 Protein sidechains [i](#)

In the following table, the Percentiles column shows the percent sidechain outliers of the chain as a percentile score with respect to all X-ray entries followed by that with respect to entries of similar resolution.

The Analysed column shows the number of residues for which the sidechain conformation was

analysed, and the total number of residues.

Mol	Chain	Analysed	Rotameric	Outliers	Percentiles	
1	A	165/174 (95%)	158 (96%)	7 (4%)	36	24
1	C	160/174 (92%)	155 (97%)	5 (3%)	47	37
1	E	165/174 (95%)	158 (96%)	7 (4%)	36	24
All	All	490/522 (94%)	471 (96%)	19 (4%)	40	27

All (19) residues with a non-rotameric sidechain are listed below:

Mol	Chain	Res	Type
1	A	3[A]	SER
1	A	3[B]	SER
1	A	8	GLU
1	A	20	LYS
1	A	32	ASN
1	A	185	SER
1	A	186	MET
1	C	1	MET
1	C	7	GLN
1	C	20	LYS
1	C	32	ASN
1	C	117	LYS
1	E	-5	LEU
1	E	-2	GLN
1	E	7	GLN
1	E	8	GLU
1	E	11	LYS
1	E	32	ASN
1	E	177	GLU

Some sidechains can be flipped to improve hydrogen bonding and reduce clashes. All (12) such sidechains are listed below:

Mol	Chain	Res	Type
1	A	21	ASN
1	A	32	ASN
1	A	41	ASN
1	A	108	ASN
1	C	7	GLN
1	C	21	ASN
1	C	32	ASN
1	C	41	ASN

Continued on next page...

Continued from previous page...

Mol	Chain	Res	Type
1	C	108	ASN
1	C	109	GLN
1	E	7	GLN
1	E	32	ASN

5.3.3 RNA [i](#)

There are no RNA molecules in this entry.

5.4 Non-standard residues in protein, DNA, RNA chains [i](#)

There are no non-standard protein/DNA/RNA residues in this entry.

5.5 Carbohydrates [i](#)

There are no carbohydrates in this entry.

5.6 Ligand geometry [i](#)

Of 10 ligands modelled in this entry, 1 is monoatomic - leaving 9 for Mogul analysis.

In the following table, the Counts columns list the number of bonds (or angles) for which Mogul statistics could be retrieved, the number of bonds (or angles) that are observed in the model and the number of bonds (or angles) that are defined in the chemical component dictionary. The Link column lists molecule types, if any, to which the group is linked. The Z score for a bond length (or angle) is the number of standard deviations the observed value is removed from the expected value. A bond length (or angle) with $|Z| > 2$ is considered an outlier worth inspection. RMSZ is the root-mean-square of all Z scores of the bond lengths (or angles).

Mol	Type	Chain	Res	Link	Bond lengths			Bond angles		
					Counts	RMSZ	$\# Z > 2$	Counts	RMSZ	$\# Z > 2$
2	COA	A	189	-	40,50,50	0.71	0	50,75,75	2.53	14 (28%)
2	COA	A	190	-	40,50,50	0.76	0	50,75,75	2.06	7 (14%)
3	TYD	A	301	-	19,26,26	0.64	0	27,40,40	1.83	4 (14%)
4	BCT	A	453	-	0,3,3	0.00	-	0,3,3	0.00	-
2	COA	C	189	-	40,50,50	0.92	3 (7%)	50,75,75	2.43	18 (36%)
3	TYD	C	301	-	19,26,26	0.60	0	27,40,40	1.69	5 (18%)
4	BCT	C	453	-	0,3,3	0.00	-	0,3,3	0.00	-
3	TYD	E	301	-	19,26,26	0.61	0	27,40,40	2.13	3 (11%)
4	BCT	E	453	-	0,3,3	0.00	-	0,3,3	0.00	-

In the following table, the Chirals column lists the number of chiral outliers, the number of chiral centers analysed, the number of these observed in the model and the number defined in the chemical component dictionary. Similar counts are reported in the Torsion and Rings columns. '-' means no outliers of that kind were identified.

Mol	Type	Chain	Res	Link	Chirals	Torsions	Rings
2	COA	A	189	-	-	0/44/64/64	0/3/3/3
2	COA	A	190	-	-	0/44/64/64	0/3/3/3
3	TYD	A	301	-	-	0/12/28/28	0/2/2/2
4	BCT	A	453	-	-	0/0/0/0	0/0/0/0
2	COA	C	189	-	-	0/44/64/64	0/3/3/3
3	TYD	C	301	-	-	0/12/28/28	0/2/2/2
4	BCT	C	453	-	-	0/0/0/0	0/0/0/0
3	TYD	E	301	-	-	0/12/28/28	0/2/2/2
4	BCT	E	453	-	-	0/0/0/0	0/0/0/0

All (3) bond length outliers are listed below:

Mol	Chain	Res	Type	Atoms	Z	Observed(Å)	Ideal(Å)
2	C	189	COA	OAP-CAP	2.10	1.46	1.42
2	C	189	COA	C2A-N3A	2.14	1.36	1.32
2	C	189	COA	O4B-C1B	3.05	1.45	1.41

All (51) bond angle outliers are listed below:

Mol	Chain	Res	Type	Atoms	Z	Observed(°)	Ideal(°)
2	A	189	COA	N3A-C2A-N1A	-10.84	120.59	128.89
2	A	190	COA	N3A-C2A-N1A	-9.37	121.72	128.89
2	C	189	COA	N3A-C2A-N1A	-7.34	123.27	128.89
3	E	301	TYD	C5-C4-N3	-6.33	118.09	125.14
3	A	301	TYD	C5-C4-N3	-4.75	119.85	125.14
3	C	301	TYD	C5-C4-N3	-4.52	120.11	125.14
2	C	189	COA	O3B-P3B-O7A	-4.20	96.62	107.11
2	C	189	COA	O4B-C1B-N9A	-4.00	99.72	108.10
2	C	189	COA	C1B-N9A-C4A	-3.75	121.28	126.94
2	C	189	COA	C4A-C5A-N7A	-3.74	106.04	109.48
2	C	189	COA	CEP-CBP-CCP	-3.58	103.86	108.50
2	A	189	COA	O5P-C5P-C6P	-3.38	116.14	121.98
2	A	189	COA	O4B-C1B-N9A	-3.13	101.54	108.10
2	A	190	COA	CDP-CBP-CCP	-3.13	104.44	108.50
2	A	189	COA	CDP-CBP-CCP	-3.10	104.48	108.50
2	A	189	COA	O3B-P3B-O7A	-3.06	99.47	107.11
2	C	189	COA	O5P-C5P-C6P	-2.99	116.82	121.98
2	C	189	COA	CEP-CBP-CDP	-2.12	105.02	109.28

Continued on next page...

Continued from previous page...

Mol	Chain	Res	Type	Atoms	Z	Observed(°)	Ideal(°)
3	A	301	TYD	C2'-C1'-N1	-2.08	109.10	114.16
2	A	189	COA	OAP-CAP-C9P	-2.01	105.78	110.38
2	A	190	COA	CDP-CBP-CAP	2.04	113.06	109.34
3	C	301	TYD	O2A-PA-O3A	2.05	114.38	105.09
2	A	190	COA	C2P-C3P-N4P	2.05	116.42	112.37
3	C	301	TYD	O2B-PB-O1B	2.06	117.21	110.58
2	C	189	COA	O5A-P2A-O3A	2.07	114.50	105.09
2	C	189	COA	O3A-P2A-O6A	2.14	108.61	102.94
2	C	189	COA	C2P-C3P-N4P	2.20	116.71	112.37
2	C	189	COA	CEP-CBP-CAP	2.35	113.64	109.34
2	C	189	COA	O2B-C2B-C3B	2.38	118.02	111.16
2	C	189	COA	CDP-CBP-CAP	2.53	113.97	109.34
2	A	189	COA	C7P-C6P-C5P	2.55	116.51	112.31
2	A	189	COA	O8A-P3B-O7A	2.55	118.80	110.58
3	E	301	TYD	O3B-PB-O2B	2.62	117.36	107.38
2	A	190	COA	O9A-P3B-O8A	2.63	117.38	107.38
2	A	189	COA	O5A-P2A-O3A	2.64	117.07	105.09
2	A	189	COA	C2B-C1B-N9A	2.75	118.50	114.29
2	A	189	COA	C4B-O4B-C1B	2.83	112.82	109.72
2	A	190	COA	P3B-O3B-C3B	2.89	128.50	121.56
3	C	301	TYD	O4'-C1'-N1	3.15	113.17	107.72
2	A	189	COA	O9A-P3B-O7A	3.37	121.43	110.58
2	C	189	COA	C4B-O4B-C1B	3.44	113.50	109.72
2	C	189	COA	O8A-P3B-O7A	3.45	121.69	110.58
3	A	301	TYD	O4'-C1'-N1	3.50	113.77	107.72
2	C	189	COA	O9A-P3B-O7A	3.70	122.50	110.58
2	A	189	COA	C2P-C3P-N4P	3.72	119.72	112.37
3	C	301	TYD	C4-N3-C2	4.73	119.33	115.25
3	A	301	TYD	C4-N3-C2	5.45	119.96	115.25
2	A	190	COA	C3P-N4P-C5P	6.63	135.83	122.79
3	E	301	TYD	C4-N3-C2	7.19	121.46	115.25
2	C	189	COA	C3P-N4P-C5P	7.34	137.23	122.79
2	A	189	COA	C3P-N4P-C5P	7.56	137.66	122.79

There are no chirality outliers.

There are no torsion outliers.

There are no ring outliers.

3 monomers are involved in 8 short contacts:

Mol	Chain	Res	Type	Clashes	Symm-Clashes
2	A	189	COA	3	0

Continued on next page...

Continued from previous page...

Mol	Chain	Res	Type	Clashes	Symm-Clashes
2	A	190	COA	3	0
2	C	189	COA	2	0

5.7 Other polymers [i](#)

There are no such residues in this entry.

5.8 Polymer linkage issues [i](#)

There are no chain breaks in this entry.

6 Fit of model and data ⓘ

6.1 Protein, DNA and RNA chains ⓘ

In the following table, the column labelled ‘#RSRZ> 2’ contains the number (and percentage) of RSRZ outliers, followed by percent RSRZ outliers for the chain as percentile scores relative to all X-ray entries and entries of similar resolution. The OWAB column contains the minimum, median, 95th percentile and maximum values of the occupancy-weighted average B-factor per residue. The column labelled ‘Q< 0.9’ lists the number of (and percentage) of residues with an average occupancy less than 0.9.

Mol	Chain	Analysed	<RSRZ>	#RSRZ>2	OWAB(Å ²)	Q<0.9
1	A	187/205 (91%)	-0.04	0 100 100	7, 16, 36, 59	0
1	C	188/205 (91%)	-0.19	4 (2%) 67 70	8, 18, 38, 66	0
1	E	193/205 (94%)	0.04	10 (5%) 31 34	9, 18, 43, 59	0
All	All	568/615 (92%)	-0.06	14 (2%) 61 64	7, 17, 41, 66	0

All (14) RSRZ outliers are listed below:

Mol	Chain	Res	Type	RSRZ
1	E	-3	PHE	9.7
1	E	-4	TYR	5.1
1	E	-2	GLN	4.9
1	E	-5	LEU	4.8
1	E	-6	ASN	4.2
1	E	-1	GLY	3.2
1	C	188	SER	3.1
1	C	187	ASN	3.0
1	E	8	GLU	2.5
1	E	186	MET	2.4
1	C	186	MET	2.4
1	E	183	LEU	2.3
1	C	1	MET	2.3
1	E	184	LYS	2.1

6.2 Non-standard residues in protein, DNA, RNA chains ⓘ

There are no non-standard protein/DNA/RNA residues in this entry.

6.3 Carbohydrates [i](#)

There are no carbohydrates in this entry.

6.4 Ligands [i](#)

In the following table, the Atoms column lists the number of modelled atoms in the group and the number defined in the chemical component dictionary. LLDF column lists the quality of electron density of the group with respect to its neighbouring residues in protein, DNA or RNA chains. The B-factors column lists the minimum, median, 95th percentile and maximum values of B factors of atoms in the group. The column labelled 'Q< 0.9' lists the number of atoms with occupancy less than 0.9.

Mol	Type	Chain	Res	Atoms	RSCC	RSR	LLDF	B-factors(\AA^2)	Q<0.9
4	BCT	C	453	4/4	0.98	0.13	1.02	25,29,30,30	0
4	BCT	E	453	4/4	0.94	0.13	0.83	28,34,34,34	0
4	BCT	A	453	4/4	0.89	0.14	0.83	26,34,35,35	0
2	COA	C	189	48/48	0.96	0.08	-0.10	9,17,34,37	0
3	TYD	C	301	25/25	0.95	0.09	-0.22	24,29,41,50	0
3	TYD	E	301	25/25	0.97	0.09	-0.56	18,23,43,45	0
3	TYD	A	301	25/25	0.97	0.08	-0.61	24,29,44,46	0
2	COA	A	189	48/48	0.97	0.08	-0.70	7,17,31,34	0
2	COA	A	190	48/48	0.97	0.08	-0.79	7,16,30,35	0
5	CL	C	190	1/1	1.00	0.09	-8.91	13,13,13,13	0

6.5 Other polymers [i](#)

There are no such residues in this entry.