



wwPDB X-ray Structure Validation Summary Report ⓘ

Jan 31, 2016 – 10:49 PM GMT

PDB ID : 1VCU
Title : Structure of the human cytosolic sialidase Neu2 in complex with the inhibitor DANA
Authors : Chavas, L.M.G.; Fusi, P.; Tringali, C.; Venerando, B.; Tettamanti, G.; Kato, R.; Monti, E.; Wakatsuki, S.
Deposited on : 2004-03-12
Resolution : 2.85 Å(reported)

This is a wwPDB X-ray Structure Validation Summary Report for a publicly released PDB entry.
We welcome your comments at validation@mail.wwpdb.org
A user guide is available at
<http://wwpdb.org/validation/2016/XrayValidationReportHelp>
with specific help available everywhere you see the ⓘ symbol.

The following versions of software and data (see [references ⓘ](#)) were used in the production of this report:

MolProbity : 4.02b-467
Mogul : 1.7 (RC4), CSD as536be (2015)
Xtriage (Phenix) : 1.9-1692
EDS : rb-20026688
Percentile statistics : 20151230.v01 (using entries in the PDB archive December 30th 2015)
Refmac : 5.8.0135
CCP4 : 6.5.0
Ideal geometry (proteins) : Engh & Huber (2001)
Ideal geometry (DNA, RNA) : Parkinson et al. (1996)
Validation Pipeline (wwPDB-VP) : trunk26865

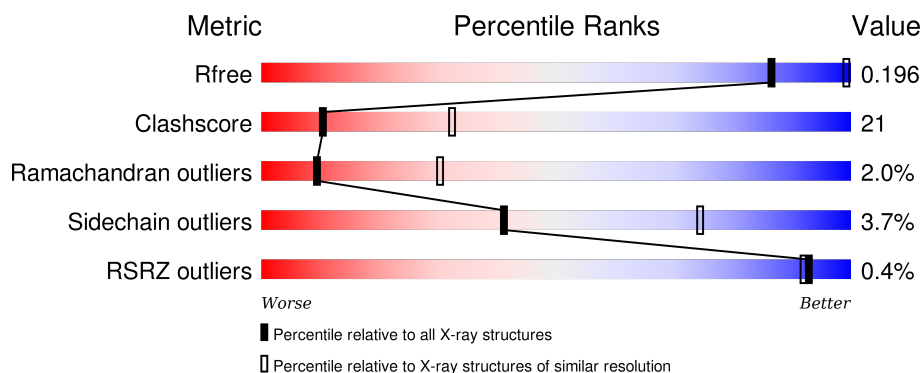
1 Overall quality at a glance

The following experimental techniques were used to determine the structure:

X-RAY DIFFRACTION



The reported resolution of this entry is 2.85 Å.

Percentile scores (ranging between 0-100) for global validation metrics of the entry are shown in the following graphic. The table shows the number of entries on which the scores are based.



Metric	Whole archive (#Entries)	Similar resolution (#Entries, resolution range(Å))
R_{free}	91344	2228 (2.90-2.82)
Clashscore	102246	2499 (2.90-2.82)
Ramachandran outliers	100387	2439 (2.90-2.82)
Sidechain outliers	100360	2442 (2.90-2.82)
RSRZ outliers	91569	2236 (2.90-2.82)

The table below summarises the geometric issues observed across the polymeric chains and their fit to the electron density. The red, orange, yellow and green segments on the lower bar indicate the fraction of residues that contain outliers for ≥ 3 , 2, 1 and 0 types of geometric quality criteria. A grey segment represents the fraction of residues that are not modelled. The numeric value for each fraction is indicated below the corresponding segment, with a dot representing fractions $\leq 5\%$. The upper red bar (where present) indicates the fraction of residues that have poor fit to the electron density. The numeric value is given above the bar.

Mol	Chain	Length	Quality of chain
1	A	382	 57% 37% . .
1	B	382	 56% 40% . .

2 Entry composition [i](#)

There are 4 unique types of molecules in this entry. The entry contains 6081 atoms, of which 0 are hydrogens and 0 are deuteriums.

In the tables below, the ZeroOcc column contains the number of atoms modelled with zero occupancy, the AltConf column contains the number of residues with at least one atom in alternate conformation and the Trace column contains the number of residues modelled with at most 2 atoms.

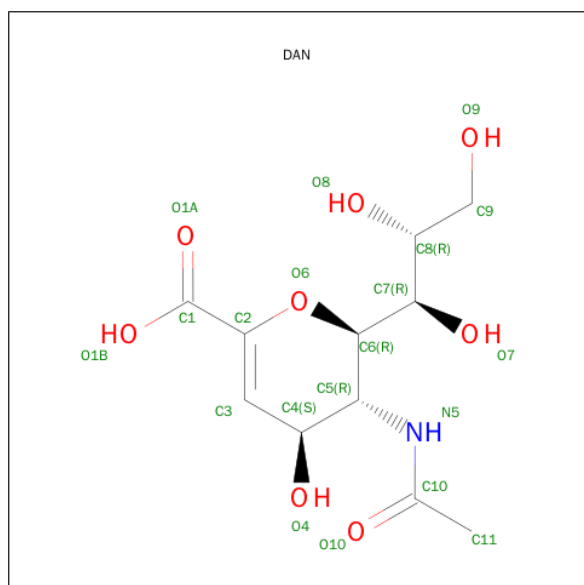
- Molecule 1 is a protein called Sialidase 2.

Mol	Chain	Residues	Atoms					ZeroOcc	AltConf	Trace
1	A	370	Total	C	N	O	S	0	0	0
			2915	1844	522	537	12			
1	B	373	Total	C	N	O	S	0	0	0
			2935	1855	525	543	12			

There are 4 discrepancies between the modelled and reference sequences:

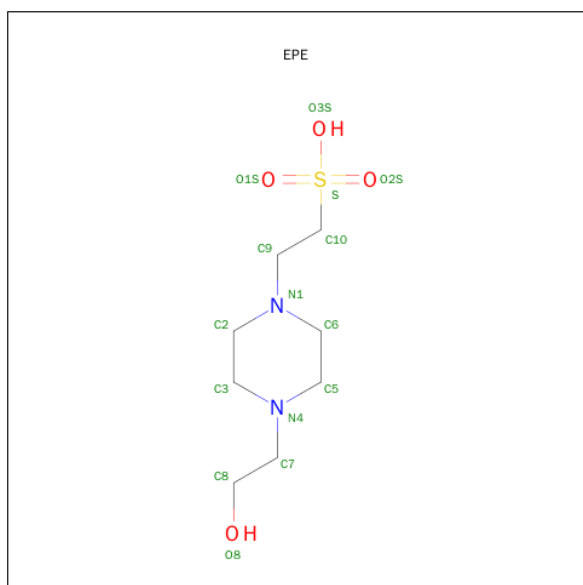
Chain	Residue	Modelled	Actual	Comment	Reference
A	-1	GLY	-	CLONING ARTIFACT	UNP Q9Y3R4
A	0	SER	-	CLONING ARTIFACT	UNP Q9Y3R4
B	-1	GLY	-	CLONING ARTIFACT	UNP Q9Y3R4
B	0	SER	-	CLONING ARTIFACT	UNP Q9Y3R4

- Molecule 2 is 2-DEOXY-2,3-DEHYDRO-N-ACETYL-NEURAMINIC ACID (three-letter code: DAN) (formula: $C_{11}H_{17}NO_8$).



Mol	Chain	Residues	Atoms				ZeroOcc	AltConf
2	A	1	Total	C	N	O	0	0
			20	11	1	8		
2	B	1	Total	C	N	O	0	0
			20	11	1	8		

- Molecule 3 is 4-(2-HYDROXYETHYL)-1-PIPERAZINE ETHANESULFONIC ACID (three-letter code: EPE) (formula: C₈H₁₈N₂O₄S).



Mol	Chain	Residues	Atoms					ZeroOcc	AltConf
3	A	1	Total	C	N	O	S	0	0
			15	8	2	4	1		
3	B	1	Total	C	N	O	S	0	0
			15	8	2	4	1		
3	A	1	Total	C	N	O	S	0	0
			15	8	2	4	1		
3	B	1	Total	C	N	O	S	0	0
			15	8	2	4	1		

- Molecule 4 is water.

Mol	Chain	Residues	Atoms		ZeroOcc	AltConf
4	A	71	Total	O	0	0
			71	71		
4	B	60	Total	O	0	0
			60	60		

4 Data and refinement statistics

Property	Value	Source
Space group	C 1 2 1	Depositor
Cell constants a, b, c, α , β , γ	157.65Å 74.00Å 77.19Å 90.00° 90.64° 90.00°	Depositor
Resolution (Å)	50.00 – 2.85 42.84 – 2.85	Depositor EDS
% Data completeness (in resolution range)	99.7 (50.00-2.85) 99.3 (42.84-2.85)	Depositor EDS
R_{merge}	0.12	Depositor
R_{sym}	(Not available)	Depositor
$\langle I/\sigma(I) \rangle$ ¹	4.52 (at 2.86Å)	Xtriage
Refinement program	CNS	Depositor
R, R_{free}	0.195 , 0.266 0.199 , 0.196	Depositor DCC
R_{free} test set	1072 reflections (5.15%)	DCC
Wilson B-factor (Å ²)	25.3	Xtriage
Anisotropy	0.296	Xtriage
Bulk solvent k_{sol} (e/Å ³), B_{sol} (Å ²)	0.32 , 8.6	EDS
Estimated twinning fraction	0.155 for -h,-k,l	Xtriage
L-test for twinning ²	$\langle L \rangle = 0.47$, $\langle L^2 \rangle = 0.30$	Xtriage
Outliers	2 of 20807 reflections (0.010%)	Xtriage
F_o, F_c correlation	0.91	EDS
Total number of atoms	6081	wwPDB-VP
Average B, all atoms (Å ²)	18.0	wwPDB-VP

Xtriage's analysis on translational NCS is as follows: *The largest off-origin peak in the Patterson function is 5.27% of the height of the origin peak. No significant pseudotranslation is detected.*

¹Intensities estimated from amplitudes.

²Theoretical values of $\langle |L| \rangle$, $\langle L^2 \rangle$ for acentric reflections are 0.5, 0.375 respectively for untwinned datasets, and 0.333, 0.2 for perfectly twinned datasets.

5 Model quality

5.1 Standard geometry

Bond lengths and bond angles in the following residue types are not validated in this section: DAN, EPE

The Z score for a bond length (or angle) is the number of standard deviations the observed value is removed from the expected value. A bond length (or angle) with $|Z| > 5$ is considered an outlier worth inspection. RMSZ is the root-mean-square of all Z scores of the bond lengths (or angles).

Mol	Chain	Bond lengths		Bond angles	
		RMSZ	# Z >5	RMSZ	# Z >5
1	A	0.38	0/2996	0.65	0/4084
1	B	0.38	0/3017	0.65	0/4114
All	All	0.38	0/6013	0.65	0/8198

There are no bond length outliers.

There are no bond angle outliers.

There are no chirality outliers.

There are no planarity outliers.

5.2 Too-close contacts

In the following table, the Non-H and H(model) columns list the number of non-hydrogen atoms and hydrogen atoms in the chain respectively. The H(added) column lists the number of hydrogen atoms added and optimized by MolProbity. The Clashes column lists the number of clashes within the asymmetric unit, whereas Symm-Clashes lists symmetry related clashes.

Mol	Chain	Non-H	H(model)	H(added)	Clashes	Symm-Clashes
1	A	2915	0	2827	122	0
1	B	2935	0	2844	132	0
2	A	20	0	16	2	0
2	B	20	0	16	1	0
3	A	30	0	36	0	0
3	B	30	0	36	1	0
4	A	71	0	0	1	0
4	B	60	0	0	2	0
All	All	6081	0	5775	252	0

The all-atom clashscore is defined as the number of clashes found per 1000 atoms (including hydrogen atoms). The all-atom clashscore for this structure is 21.

The worst 5 of 252 close contacts within the same asymmetric unit are listed below, sorted by their clash magnitude.

Atom-1	Atom-2	Interatomic distance (Å)	Clash overlap (Å)
1:B:185:HIS:HD2	1:B:188:GLN:H	1.04	1.02
1:B:185:HIS:CD2	1:B:188:GLN:H	1.81	0.99
1:A:27:TYR:H	1:A:338:GLN:HE21	1.22	0.86
1:A:94:GLN:HE21	1:A:172:ARG:HB2	1.41	0.83
1:A:27:TYR:N	1:A:338:GLN:HE21	1.77	0.82

There are no symmetry-related clashes.

5.3 Torsion angles [i](#)

5.3.1 Protein backbone [i](#)

In the following table, the Percentiles column shows the percent Ramachandran outliers of the chain as a percentile score with respect to all X-ray entries followed by that with respect to entries of similar resolution.

The Analysed column shows the number of residues for which the backbone conformation was analysed, and the total number of residues.

Mol	Chain	Analysed	Favoured	Allowed	Outliers	Percentiles	
1	A	364/382 (95%)	326 (90%)	30 (8%)	8 (2%)	8	27
1	B	369/382 (97%)	334 (90%)	28 (8%)	7 (2%)	10	32
All	All	733/764 (96%)	660 (90%)	58 (8%)	15 (2%)	9	30

5 of 15 Ramachandran outliers are listed below:

Mol	Chain	Res	Type
1	A	269	PRO
1	B	257	GLU
1	A	214	GLN
1	B	227	GLY
1	A	75	ALA

5.3.2 Protein sidechains [i](#)

In the following table, the Percentiles column shows the percent sidechain outliers of the chain as a percentile score with respect to all X-ray entries followed by that with respect to entries of similar resolution.

The Analysed column shows the number of residues for which the sidechain conformation was analysed, and the total number of residues.

Mol	Chain	Analysed	Rotameric	Outliers	Percentiles	
1	A	310/318 (98%)	296 (96%)	14 (4%)	34	67
1	B	312/318 (98%)	303 (97%)	9 (3%)	50	81
All	All	622/636 (98%)	599 (96%)	23 (4%)	41	74

5 of 23 residues with a non-rotameric sidechain are listed below:

Mol	Chain	Res	Type
1	A	260	LEU
1	A	347	SER
1	B	326	LEU
1	A	311	LEU
1	A	365	LEU

Some sidechains can be flipped to improve hydrogen bonding and reduce clashes. 5 of 27 such sidechains are listed below:

Mol	Chain	Res	Type
1	A	303	GLN
1	B	86	ASN
1	B	247	GLN
1	A	338	GLN
1	A	94	GLN

5.3.3 RNA ⓘ

There are no RNA molecules in this entry.

5.4 Non-standard residues in protein, DNA, RNA chains ⓘ

There are no non-standard protein/DNA/RNA residues in this entry.

5.5 Carbohydrates ⓘ

There are no carbohydrates in this entry.

5.6 Ligand geometry

6 ligands are modelled in this entry.

In the following table, the Counts columns list the number of bonds (or angles) for which Mogul statistics could be retrieved, the number of bonds (or angles) that are observed in the model and the number of bonds (or angles) that are defined in the chemical component dictionary. The Link column lists molecule types, if any, to which the group is linked. The Z score for a bond length (or angle) is the number of standard deviations the observed value is removed from the expected value. A bond length (or angle) with $|Z| > 2$ is considered an outlier worth inspection. RMSZ is the root-mean-square of all Z scores of the bond lengths (or angles).

Mol	Type	Chain	Res	Link	Bond lengths			Bond angles		
					Counts	RMSZ	$\# Z > 2$	Counts	RMSZ	$\# Z > 2$
2	DAN	A	381	-	16,20,20	4.64	4 (25%)	19,28,28	1.95	3 (15%)
3	EPE	A	382	-	14,15,15	2.37	2 (14%)	18,20,20	1.61	3 (16%)
3	EPE	A	383	-	14,15,15	2.43	2 (14%)	18,20,20	1.50	2 (11%)
2	DAN	B	381	-	16,20,20	4.73	4 (25%)	19,28,28	1.93	3 (15%)
3	EPE	B	382	-	14,15,15	2.48	2 (14%)	18,20,20	1.51	3 (16%)
3	EPE	B	383	-	14,15,15	2.42	2 (14%)	18,20,20	1.48	2 (11%)

In the following table, the Chirals column lists the number of chiral outliers, the number of chiral centers analysed, the number of these observed in the model and the number defined in the chemical component dictionary. Similar counts are reported in the Torsion and Rings columns. '-' means no outliers of that kind were identified.

Mol	Type	Chain	Res	Link	Chirals	Torsions	Rings
2	DAN	A	381	-	-	0/14/34/34	0/1/1/1
3	EPE	A	382	-	-	0/9/19/19	0/1/1/1
3	EPE	A	383	-	-	0/9/19/19	0/1/1/1
2	DAN	B	381	-	-	0/14/34/34	0/1/1/1
3	EPE	B	382	-	-	0/9/19/19	0/1/1/1
3	EPE	B	383	-	-	0/9/19/19	0/1/1/1

The worst 5 of 16 bond length outliers are listed below:

Mol	Chain	Res	Type	Atoms	Z	Observed(Å)	Ideal(Å)
2	B	381	DAN	O6-C2	-3.98	1.30	1.37
2	A	381	DAN	O6-C2	-3.82	1.30	1.37
3	B	383	EPE	C7-N4	2.13	1.52	1.47
3	A	383	EPE	C7-N4	2.49	1.53	1.47
3	A	382	EPE	C7-N4	2.88	1.54	1.47

The worst 5 of 16 bond angle outliers are listed below:

Mol	Chain	Res	Type	Atoms	Z	Observed($^{\circ}$)	Ideal($^{\circ}$)
2	A	381	DAN	C4-C3-C2	-6.58	110.47	121.60
2	B	381	DAN	C4-C3-C2	-6.15	111.20	121.60
3	A	382	EPE	O3S-S-O1S	-4.23	101.76	111.61
3	B	382	EPE	O3S-S-O1S	-3.94	102.44	111.61
3	A	383	EPE	O3S-S-O1S	-3.15	104.27	111.61

There are no chirality outliers.

There are no torsion outliers.

There are no ring outliers.

3 monomers are involved in 4 short contacts:

Mol	Chain	Res	Type	Clashes	Symm-Clashes
2	A	381	DAN	2	0
2	B	381	DAN	1	0
3	B	382	EPE	1	0

5.7 Other polymers [i](#)

There are no such residues in this entry.

5.8 Polymer linkage issues [i](#)

There are no chain breaks in this entry.

6 Fit of model and data [i](#)

6.1 Protein, DNA and RNA chains [i](#)

In the following table, the column labelled ‘#RSRZ> 2’ contains the number (and percentage) of RSRZ outliers, followed by percent RSRZ outliers for the chain as percentile scores relative to all X-ray entries and entries of similar resolution. The OWAB column contains the minimum, median, 95th percentile and maximum values of the occupancy-weighted average B-factor per residue. The column labelled ‘Q< 0.9’ lists the number of (and percentage) of residues with an average occupancy less than 0.9.

Mol	Chain	Analysed	<RSRZ>	#RSRZ>2	OWAB(Å ²)	Q<0.9
1	A	370/382 (96%)	-0.56	1 (0%) 94 93	3, 17, 34, 49	0
1	B	373/382 (97%)	-0.56	2 (0%) 91 90	3, 17, 35, 51	0
All	All	743/764 (97%)	-0.56	3 (0%) 93 92	3, 17, 34, 51	0

All (3) RSRZ outliers are listed below:

Mol	Chain	Res	Type	RSRZ
1	B	213	ALA	2.3
1	B	257	GLU	2.1
1	A	288	SER	2.0

6.2 Non-standard residues in protein, DNA, RNA chains [i](#)

There are no non-standard protein/DNA/RNA residues in this entry.

6.3 Carbohydrates [i](#)

There are no carbohydrates in this entry.

6.4 Ligands [i](#)

In the following table, the Atoms column lists the number of modelled atoms in the group and the number defined in the chemical component dictionary. LLDF column lists the quality of electron density of the group with respect to its neighbouring residues in protein, DNA or RNA chains. The B-factors column lists the minimum, median, 95th percentile and maximum values of B factors of atoms in the group. The column labelled ‘Q< 0.9’ lists the number of atoms with occupancy less than 0.9.

Mol	Type	Chain	Res	Atoms	RSCC	RSR	LLDF	B-factors(\AA^2)	Q<0.9
3	EPE	A	383	15/15	0.92	0.21	1.72	46,50,55,55	0
3	EPE	B	383	15/15	0.91	0.20	1.22	50,51,56,56	0
3	EPE	B	382	15/15	0.97	0.15	0.58	5,11,18,18	0
2	DAN	B	381	20/20	0.96	0.16	0.51	15,21,25,26	0
3	EPE	A	382	15/15	0.98	0.14	0.31	2,9,13,15	0
2	DAN	A	381	20/20	0.96	0.15	-0.03	17,20,22,24	0

6.5 Other polymers [i](#)

There are no such residues in this entry.