



wwPDB X-ray Structure Validation Summary Report ⓘ

Feb 1, 2016 – 05:58 AM GMT

PDB ID : 2VGL
Title : AP2 CLATHRIN ADAPTOR CORE
Authors : Owen, D.J.; Collins, B.M.; Mccoy, A.J.; Evans, P.R.
Deposited on : 2007-11-14
Resolution : 2.60 Å(reported)

This is a wwPDB X-ray Structure Validation Summary Report for a publicly released PDB entry.
We welcome your comments at validation@mail.wwpdb.org
A user guide is available at
<http://wwpdb.org/validation/2016/XrayValidationReportHelp>
with specific help available everywhere you see the ⓘ symbol.

The following versions of software and data (see [references ⓘ](#)) were used in the production of this report:

MolProbity : 4.02b-467
Mogul : 1.7 (RC4), CSD as536be (2015)
Xtriage (Phenix) : 1.9-1692
EDS : rb-20026688
Percentile statistics : 20151230.v01 (using entries in the PDB archive December 30th 2015)
Refmac : 5.8.0135
CCP4 : 6.5.0
Ideal geometry (proteins) : Engh & Huber (2001)
Ideal geometry (DNA, RNA) : Parkinson et al. (1996)
Validation Pipeline (wwPDB-VP) : trunk26865

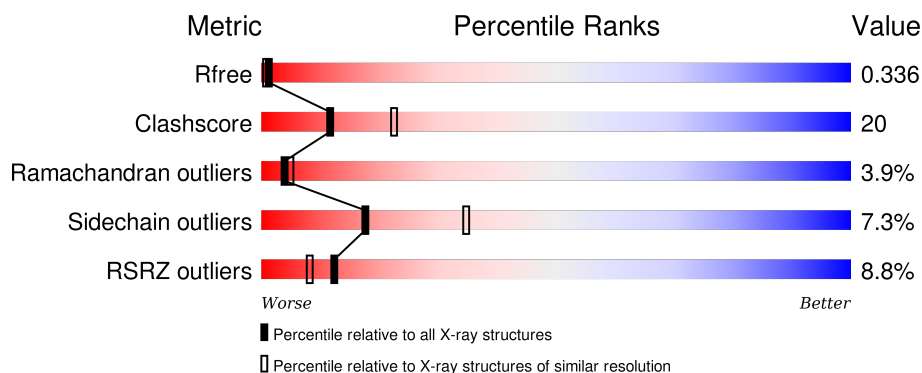
1 Overall quality at a glance ⓘ

The following experimental techniques were used to determine the structure:

X-RAY DIFFRACTION

The reported resolution of this entry is 2.60 Å.

Percentile scores (ranging between 0-100) for global validation metrics of the entry are shown in the following graphic. The table shows the number of entries on which the scores are based.



Metric	Whole archive (#Entries)	Similar resolution (#Entries, resolution range(Å))
R_{free}	91344	2328 (2.60-2.60)
Clashscore	102246	2679 (2.60-2.60)
Ramachandran outliers	100387	2635 (2.60-2.60)
Sidechain outliers	100360	2635 (2.60-2.60)
RSRZ outliers	91569	2334 (2.60-2.60)

The table below summarises the geometric issues observed across the polymeric chains and their fit to the electron density. The red, orange, yellow and green segments on the lower bar indicate the fraction of residues that contain outliers for ≥ 3 , 2, 1 and 0 types of geometric quality criteria. A grey segment represents the fraction of residues that are not modelled. The numeric value for each fraction is indicated below the corresponding segment, with a dot representing fractions $\leq 5\%$. The upper red bar (where present) indicates the fraction of residues that have poor fit to the electron density. The numeric value is given above the bar.

Mol	Chain	Length	Quality of chain
1	A	621	<div> <div>8%</div> <div>66%</div> <div>27%</div> <div>• •</div> </div>
2	B	591	<div> <div>17%</div> <div>49%</div> <div>40%</div> <div>8%</div> <div>• •</div> </div>
3	M	435	<div> <div>%</div> <div>61%</div> <div>27%</div> <div>• 9%</div> </div>
4	S	142	<div> <div>82%</div> <div>18%</div> <div>•</div> </div>

2 Entry composition

There are 6 unique types of molecules in this entry. The entry contains 13755 atoms, of which 0 are hydrogens and 0 are deuteriums.

In the tables below, the ZeroOcc column contains the number of atoms modelled with zero occupancy, the AltConf column contains the number of residues with at least one atom in alternate conformation and the Trace column contains the number of residues modelled with at most 2 atoms.

- Molecule 1 is a protein called ADAPTOR PROTEIN COMPLEX AP-2, ALPHA 2 SUB-UNIT.

Mol	Chain	Residues	Atoms					ZeroOcc	AltConf	Trace
1	A	600	Total	C	N	O	S	0	0	0
			4737	3017	815	884	21			

- Molecule 2 is a protein called AP-2 COMPLEX SUBUNIT BETA-1.

Mol	Chain	Residues	Atoms					ZeroOcc	AltConf	Trace
2	B	579	Total	C	N	O	S	0	0	0
			4578	2919	762	872	25			

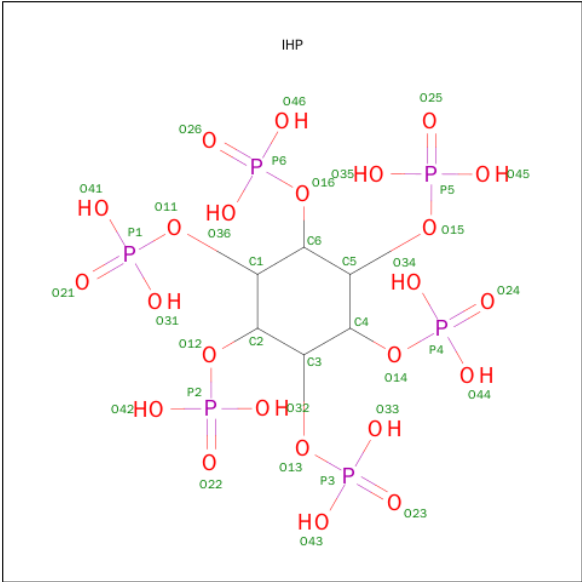
- Molecule 3 is a protein called AP-2 COMPLEX SUBUNIT MU-1.

Mol	Chain	Residues	Atoms					ZeroOcc	AltConf	Trace
3	M	396	Total	C	N	O	S	0	0	0
			3192	2053	559	561	19			

- Molecule 4 is a protein called AP-2 COMPLEX SUBUNIT SIGMA-1.

Mol	Chain	Residues	Atoms					ZeroOcc	AltConf	Trace
4	S	142	Total	C	N	O	S	0	0	0
			1200	778	200	215	7			

- Molecule 5 is INOSITOL HEXAKISPHOSPHATE (three-letter code: IHP) (formula: C₆H₁₈O₂₄P₆).



Mol	Chain	Residues	Atoms				ZeroOcc	AltConf
5	A	1	Total	C	O	P	0	0
			36	6	24	6		

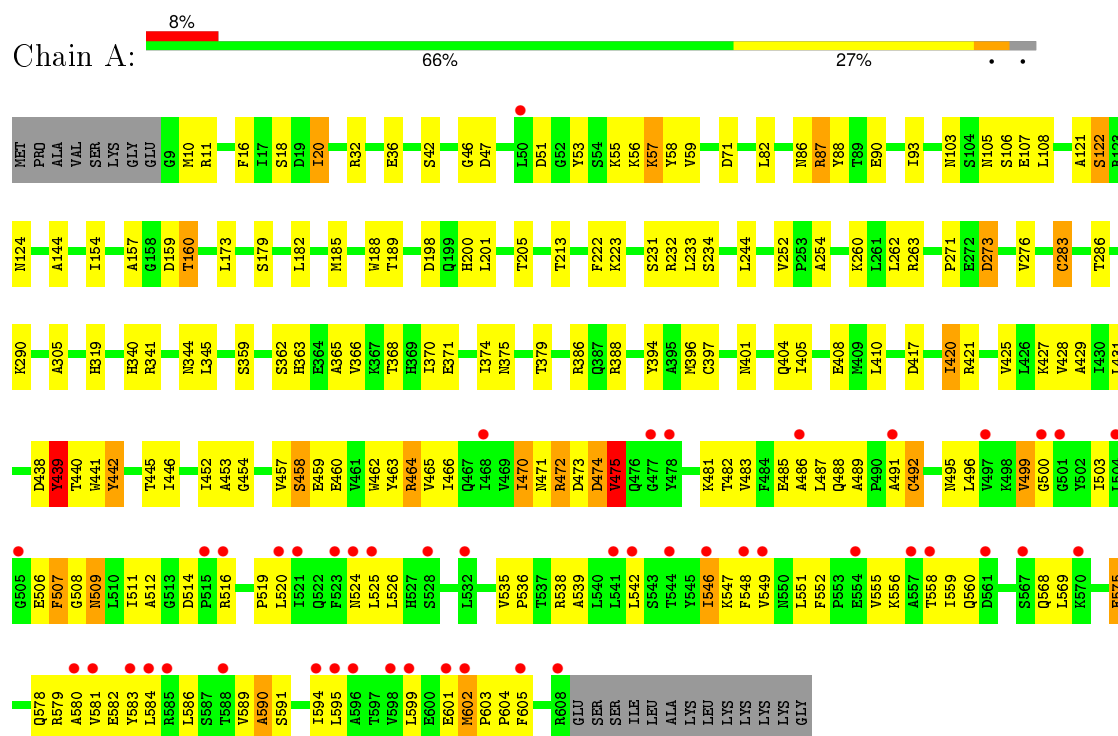
- Molecule 6 is water.

Mol	Chain	Residues	Atoms	ZeroOcc	AltConf
6	A	4	Total O	0	0
			4 4		
6	B	1	Total O	0	0
			1 1		
6	M	2	Total O	0	0
			2 2		
6	S	5	Total O	0	0
			5 5		

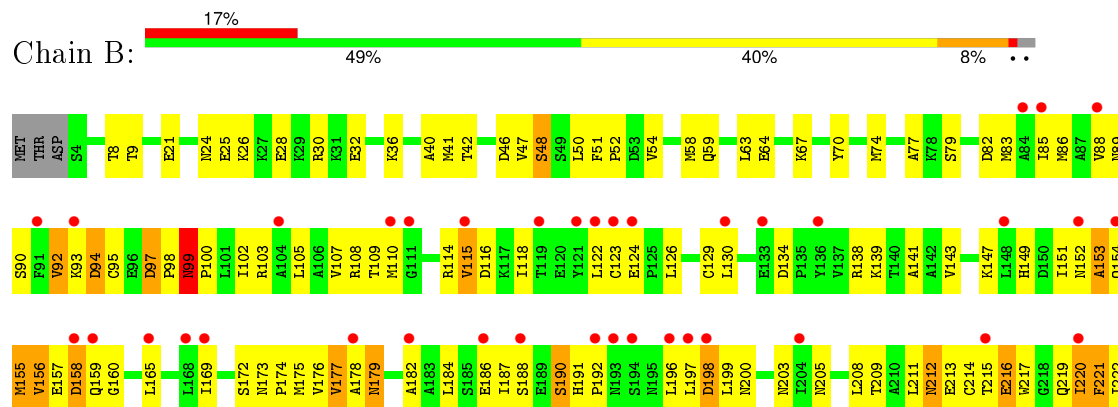
3 Residue-property plots

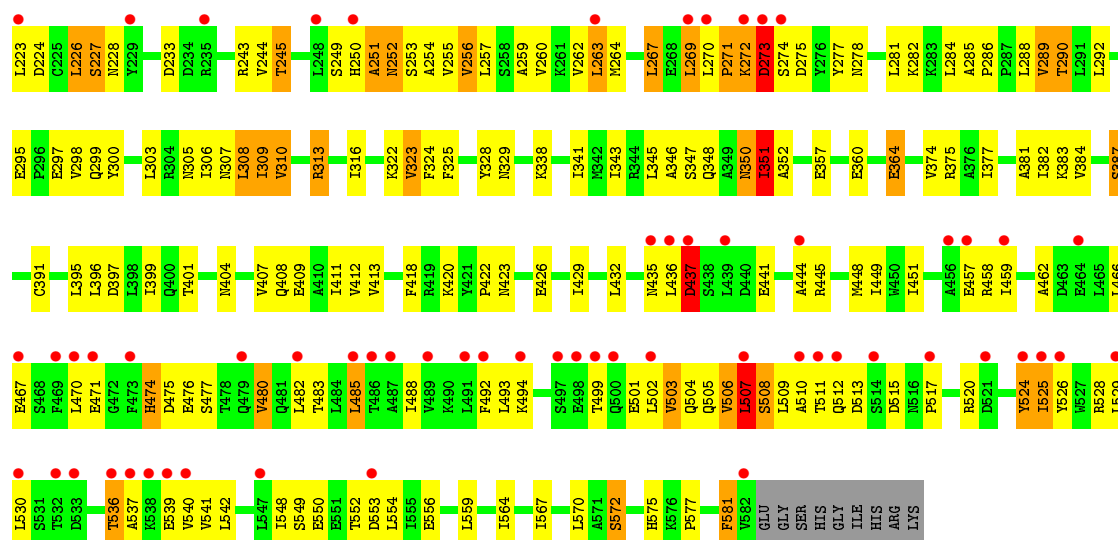
These plots are drawn for all protein, RNA and DNA chains in the entry. The first graphic for a chain summarises the proportions of errors displayed in the second graphic. The second graphic shows the sequence view annotated by issues in geometry and electron density. Residues are color-coded according to the number of geometric quality criteria for which they contain at least one outlier: green = 0, yellow = 1, orange = 2 and red = 3 or more. A red dot above a residue indicates a poor fit to the electron density ($RSRZ > 2$). Stretches of 2 or more consecutive residues without any outlier are shown as a green connector. Residues present in the sample, but not in the model, are shown in grey.

• Molecule 1: ADAPTOR PROTEIN COMPLEX AP-2, ALPHA 2 SUBUNIT

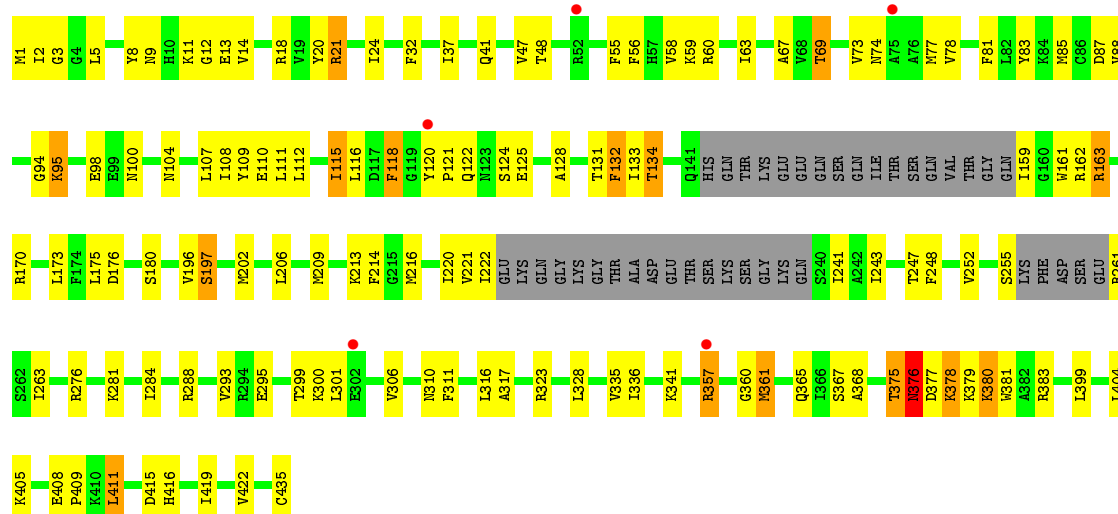


• Molecule 2: AP-2 COMPLEX SUBUNIT BETA-1

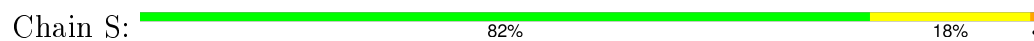




• Molecule 3: AP-2 COMPLEX SUBUNIT MU-1



• Molecule 4: AP-2 COMPLEX SUBUNIT SIGMA-1



4 Data and refinement statistics

Property	Value	Source
Space group	P 31 2 1	Depositor
Cell constants a, b, c, α , β , γ	121.75Å 121.75Å 258.12Å 90.00° 90.00° 120.00°	Depositor
Resolution (Å)	66.67 – 2.60 66.66 – 2.60	Depositor EDS
% Data completeness (in resolution range)	99.2 (66.67-2.60) 99.2 (66.66-2.60)	Depositor EDS
R_{merge}	0.08	Depositor
R_{sym}	(Not available)	Depositor
$\langle I/\sigma(I) \rangle$ ¹	1.77 (at 2.58Å)	Xtriage
Refinement program	REFMAC 5.2.0019	Depositor
R, R_{free}	0.261 , 0.339 0.258 , 0.336	Depositor DCC
R_{free} test set	3482 reflections (5.36%)	DCC
Wilson B-factor (Å ²)	58.0	Xtriage
Anisotropy	0.208	Xtriage
Bulk solvent k_{sol} (e/Å ³), B_{sol} (Å ²)	0.34 , 54.7	EDS
Estimated twinning fraction	0.021 for -h,-k,l	Xtriage
L-test for twinning ²	$\langle L \rangle = 0.49$, $\langle L^2 \rangle = 0.33$	Xtriage
Outliers	1 of 68698 reflections (0.001%)	Xtriage
F_o, F_c correlation	0.91	EDS
Total number of atoms	13755	wwPDB-VP
Average B, all atoms (Å ²)	61.0	wwPDB-VP

Xtriage's analysis on translational NCS is as follows: *The largest off-origin peak in the Patterson function is 2.66% of the height of the origin peak. No significant pseudotranslation is detected.*

¹Intensities estimated from amplitudes.

²Theoretical values of $\langle |L| \rangle$, $\langle L^2 \rangle$ for acentric reflections are 0.5, 0.375 respectively for untwinned datasets, and 0.333, 0.2 for perfectly twinned datasets.

5 Model quality [i](#)

5.1 Standard geometry [i](#)

Bond lengths and bond angles in the following residue types are not validated in this section: IHP

The Z score for a bond length (or angle) is the number of standard deviations the observed value is removed from the expected value. A bond length (or angle) with $|Z| > 5$ is considered an outlier worth inspection. RMSZ is the root-mean-square of all Z scores of the bond lengths (or angles).

Mol	Chain	Bond lengths		Bond angles	
		RMSZ	# $ Z > 5$	RMSZ	# $ Z > 5$
1	A	0.84	0/4822	0.83	2/6541 (0.0%)
2	B	0.68	0/4650	0.76	2/6309 (0.0%)
3	M	0.86	0/3255	0.85	1/4382 (0.0%)
4	S	1.07	1/1224 (0.1%)	0.95	1/1650 (0.1%)
All	All	0.82	1/13951 (0.0%)	0.82	6/18882 (0.0%)

Chiral center outliers are detected by calculating the chiral volume of a chiral center and verifying if the center is modelled as a planar moiety or with the opposite hand. A planarity outlier is detected by checking planarity of atoms in a peptide group, atoms in a mainchain group or atoms of a sidechain that are expected to be planar.

Mol	Chain	#Chirality outliers	#Planarity outliers
2	B	0	5
3	M	0	1
All	All	0	6

All (1) bond length outliers are listed below:

Mol	Chain	Res	Type	Atoms	Z	Observed(Å)	Ideal(Å)
4	S	80	TYR	CD2-CE2	-5.44	1.31	1.39

The worst 5 of 6 bond angle outliers are listed below:

Mol	Chain	Res	Type	Atoms	Z	Observed(°)	Ideal(°)
4	S	53	ARG	NE-CZ-NH2	-6.57	117.02	120.30
2	B	313	ARG	NE-CZ-NH1	5.55	123.08	120.30
1	A	472	ARG	NE-CZ-NH1	5.44	123.02	120.30
1	A	542	LEU	CA-CB-CG	5.18	127.22	115.30
3	M	18	ARG	NE-CZ-NH1	5.11	122.86	120.30

There are no chirality outliers.

5 of 6 planarity outliers are listed below:

Mol	Chain	Res	Type	Group
2	B	190	SER	Peptide
2	B	191	HIS	Peptide
2	B	197	LEU	Peptide
2	B	199	LEU	Peptide
2	B	273	ASP	Peptide

5.2 Too-close contacts ⓘ

In the following table, the Non-H and H(model) columns list the number of non-hydrogen atoms and hydrogen atoms in the chain respectively. The H(added) column lists the number of hydrogen atoms added and optimized by MolProbity. The Clashes column lists the number of clashes within the asymmetric unit, whereas Symm-Clashes lists symmetry related clashes.

Mol	Chain	Non-H	H(model)	H(added)	Clashes	Symm-Clashes
1	A	4737	0	4830	191	0
2	B	4578	0	4686	274	3
3	M	3192	0	3295	98	0
4	S	1200	0	1195	21	0
5	A	36	0	6	4	0
6	A	4	0	0	0	0
6	B	1	0	0	0	0
6	M	2	0	0	1	0
6	S	5	0	0	0	0
All	All	13755	0	14012	564	3

The all-atom clashscore is defined as the number of clashes found per 1000 atoms (including hydrogen atoms). The all-atom clashscore for this structure is 20.

The worst 5 of 564 close contacts within the same asymmetric unit are listed below, sorted by their clash magnitude.

Atom-1	Atom-2	Interatomic distance (Å)	Clash overlap (Å)
3:M:1:MET:O	3:M:69:THR:HG21	1.28	1.22
1:A:103:ASN:HD21	1:A:108:LEU:HD12	1.06	1.17
2:B:251:ALA:HB3	2:B:255:VAL:HG23	1.27	1.16
2:B:411:ILE:HD11	2:B:448:MET:HE2	1.33	1.10
3:M:361:MET:HE2	3:M:361:MET:HA	1.26	1.08

All (3) symmetry-related close contacts are listed below. The label for Atom-2 includes the sym-

metry operator and encoded unit-cell translations to be applied.

Atom-1	Atom-2	Interatomic distance (Å)	Clash overlap (Å)
2:B:290:THR:CG2	2:B:290:THR:CG2[4_555]	1.21	0.99
2:B:213:GLU:O	2:B:213:GLU:O[4_555]	1.84	0.36
2:B:290:THR:CB	2:B:290:THR:CG2[4_555]	2.12	0.08

5.3 Torsion angles [i](#)

5.3.1 Protein backbone [i](#)

In the following table, the Percentiles column shows the percent Ramachandran outliers of the chain as a percentile score with respect to all X-ray entries followed by that with respect to entries of similar resolution.

The Analysed column shows the number of residues for which the backbone conformation was analysed, and the total number of residues.

Mol	Chain	Analysed	Favoured	Allowed	Outliers	Percentiles	
1	A	598/621 (96%)	525 (88%)	57 (10%)	16 (3%)	6	10
2	B	577/591 (98%)	435 (75%)	103 (18%)	39 (7%)	1	1
3	M	388/435 (89%)	348 (90%)	29 (8%)	11 (3%)	6	10
4	S	140/142 (99%)	133 (95%)	6 (4%)	1 (1%)	26	51
All	All	1703/1789 (95%)	1441 (85%)	195 (12%)	67 (4%)	4	5

5 of 67 Ramachandran outliers are listed below:

Mol	Chain	Res	Type
1	A	417	ASP
1	A	439	TYR
1	A	474	ASP
1	A	492	CYS
2	B	153	ALA

5.3.2 Protein sidechains [i](#)

In the following table, the Percentiles column shows the percent sidechain outliers of the chain as a percentile score with respect to all X-ray entries followed by that with respect to entries of similar resolution.

The Analysed column shows the number of residues for which the sidechain conformation was analysed, and the total number of residues.

Mol	Chain	Analysed	Rotameric	Outliers	Percentiles	
1	A	526/543 (97%)	497 (94%)	29 (6%)	27	51
2	B	516/532 (97%)	466 (90%)	50 (10%)	10	19
3	M	353/387 (91%)	325 (92%)	28 (8%)	15	30
4	S	131/131 (100%)	126 (96%)	5 (4%)	40	68
All	All	1526/1593 (96%)	1414 (93%)	112 (7%)	17	35

5 of 112 residues with a non-rotameric sidechain are listed below:

Mol	Chain	Res	Type
2	B	273	ASP
2	B	436	LEU
3	M	376	ASN
2	B	282	LYS
2	B	313	ARG

Some sidechains can be flipped to improve hydrogen bonding and reduce clashes. 5 of 26 such sidechains are listed below:

Mol	Chain	Res	Type
2	B	99	ASN
2	B	200	ASN
4	S	48	ASN
2	B	152	ASN
2	B	159	GLN

5.3.3 RNA ⓘ

There are no RNA molecules in this entry.

5.4 Non-standard residues in protein, DNA, RNA chains ⓘ

There are no non-standard protein/DNA/RNA residues in this entry.

5.5 Carbohydrates ⓘ

There are no carbohydrates in this entry.

5.6 Ligand geometry ⓘ

1 ligand is modelled in this entry.

In the following table, the Counts columns list the number of bonds (or angles) for which Mogul statistics could be retrieved, the number of bonds (or angles) that are observed in the model and the number of bonds (or angles) that are defined in the chemical component dictionary. The Link column lists molecule types, if any, to which the group is linked. The Z score for a bond length (or angle) is the number of standard deviations the observed value is removed from the expected value. A bond length (or angle) with $|Z| > 2$ is considered an outlier worth inspection. RMSZ is the root-mean-square of all Z scores of the bond lengths (or angles).

Mol	Type	Chain	Res	Link	Bond lengths			Bond angles		
					Counts	RMSZ	$\# Z > 2$	Counts	RMSZ	$\# Z > 2$
5	IHP	A	1609	-	36,36,36	2.96	13 (36%)	48,60,60	1.42	10 (20%)

In the following table, the Chirals column lists the number of chiral outliers, the number of chiral centers analysed, the number of these observed in the model and the number defined in the chemical component dictionary. Similar counts are reported in the Torsion and Rings columns. '-' means no outliers of that kind were identified.

Mol	Type	Chain	Res	Link	Chirals	Torsions	Rings
5	IHP	A	1609	-	-	0/30/54/54	0/1/1/1

The worst 5 of 13 bond length outliers are listed below:

Mol	Chain	Res	Type	Atoms	Z	Observed(Å)	Ideal(Å)
5	A	1609	IHP	P4-O44	-2.39	1.46	1.54
5	A	1609	IHP	P4-O34	3.36	1.66	1.54
5	A	1609	IHP	P3-O33	4.12	1.69	1.54
5	A	1609	IHP	P5-O35	4.26	1.70	1.54
5	A	1609	IHP	P1-O41	4.42	1.70	1.54

The worst 5 of 10 bond angle outliers are listed below:

Mol	Chain	Res	Type	Atoms	Z	Observed(°)	Ideal(°)
5	A	1609	IHP	P5-O15-C5	-4.11	111.71	121.56
5	A	1609	IHP	O41-P1-O21	-2.73	101.78	110.58
5	A	1609	IHP	O16-C6-C1	-2.59	102.46	108.47
5	A	1609	IHP	P6-O16-C6	-2.17	116.36	121.56
5	A	1609	IHP	C5-C4-C3	-2.17	105.63	110.43

There are no chirality outliers.

There are no torsion outliers.

There are no ring outliers.

1 monomer is involved in 4 short contacts:

Mol	Chain	Res	Type	Clashes	Symm-Clashes
5	A	1609	IHP	4	0

5.7 Other polymers [i](#)

There are no such residues in this entry.

5.8 Polymer linkage issues [i](#)

There are no chain breaks in this entry.

6 Fit of model and data [i](#)

6.1 Protein, DNA and RNA chains [i](#)

In the following table, the column labelled ‘#RSRZ> 2’ contains the number (and percentage) of RSRZ outliers, followed by percent RSRZ outliers for the chain as percentile scores relative to all X-ray entries and entries of similar resolution. The OWAB column contains the minimum, median, 95th percentile and maximum values of the occupancy-weighted average B-factor per residue. The column labelled ‘Q< 0.9’ lists the number of (and percentage) of residues with an average occupancy less than 0.9.

Mol	Chain	Analysed	<RSRZ>	#RSRZ>2	OWAB(Å ²)	Q<0.9
1	A	600/621 (96%)	0.37	47 (7%) 16 11	23, 50, 93, 115	0
2	B	579/591 (97%)	0.91	99 (17%) 2 1	47, 79, 103, 116	0
3	M	396/435 (91%)	0.20	5 (1%) 79 75	24, 55, 75, 86	0
4	S	142/142 (100%)	-0.06	0 100 100	21, 33, 46, 57	0
All	All	1717/1789 (95%)	0.48	151 (8%) 12 8	21, 59, 101, 116	0

The worst 5 of 151 RSRZ outliers are listed below:

Mol	Chain	Res	Type	RSRZ
1	A	515	PRO	9.8
1	A	500	GLY	9.3
2	B	530	LEU	7.8
1	A	546	ILE	7.8
2	B	489	VAL	7.6

6.2 Non-standard residues in protein, DNA, RNA chains [i](#)

There are no non-standard protein/DNA/RNA residues in this entry.

6.3 Carbohydrates [i](#)

There are no carbohydrates in this entry.

6.4 Ligands [i](#)

In the following table, the Atoms column lists the number of modelled atoms in the group and the number defined in the chemical component dictionary. LLDF column lists the quality of electron density of the group with respect to its neighbouring residues in protein, DNA or RNA chains. The B-factors column lists the minimum, median, 95th percentile and maximum values of B factors

of atoms in the group. The column labelled 'Q< 0.9' lists the number of atoms with occupancy less than 0.9.

Mol	Type	Chain	Res	Atoms	RSCC	RSR	LLDF	B-factors(\AA^2)	Q<0.9
5	IHP	A	1609	36/36	0.94	0.11	-2.03	43,60,68,69	0

6.5 Other polymers [i](#)

There are no such residues in this entry.