



Full wwPDB X-ray Structure Validation Report ⓘ

Feb 1, 2016 – 01:55 PM GMT

PDB ID : 3VI5
Title : Human hematopoietic prostaglandin D synthase inhibitor complex structures
Authors : Kado, Y.; Inoue, T.
Deposited on : 2011-09-21
Resolution : 2.00 Å(reported)

This is a Full wwPDB X-ray Structure Validation Report for a publicly released PDB entry.
We welcome your comments at validation@mail.wwpdb.org
A user guide is available at
<http://wwpdb.org/validation/2016/XrayValidationReportHelp>
with specific help available everywhere you see the ⓘ symbol.

The following versions of software and data (see [references ⓘ](#)) were used in the production of this report:

MolProbity : 4.02b-467
Mogul : 1.7 (RC4), CSD as536be (2015)
Xtriage (Phenix) : 1.9-1692
EDS : rb-20026688
Percentile statistics : 20151230.v01 (using entries in the PDB archive December 30th 2015)
Refmac : 5.8.0135
CCP4 : 6.5.0
Ideal geometry (proteins) : Engh & Huber (2001)
Ideal geometry (DNA, RNA) : Parkinson et al. (1996)
Validation Pipeline (wwPDB-VP) : trunk26865

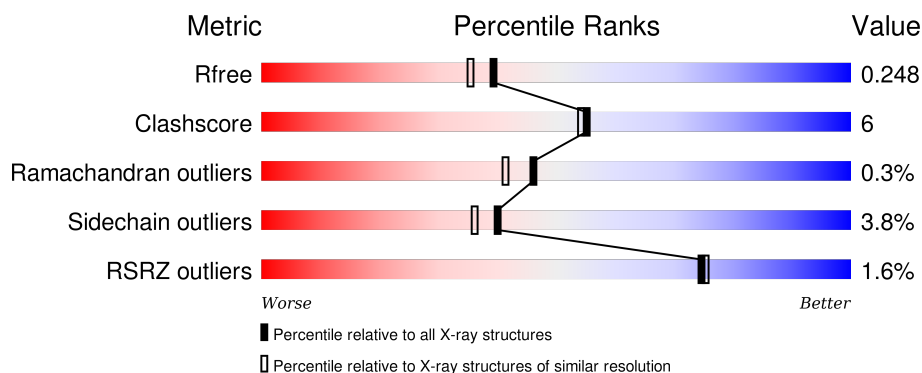
1 Overall quality at a glance ⓘ

The following experimental techniques were used to determine the structure:

X-RAY DIFFRACTION

The reported resolution of this entry is 2.00 Å.

Percentile scores (ranging between 0-100) for global validation metrics of the entry are shown in the following graphic. The table shows the number of entries on which the scores are based.



Metric	Whole archive (#Entries)	Similar resolution (#Entries, resolution range(Å))
R_{free}	91344	6249 (2.00-2.00)
Clashscore	102246	7340 (2.00-2.00)
Ramachandran outliers	100387	7248 (2.00-2.00)
Sidechain outliers	100360	7247 (2.00-2.00)
RSRZ outliers	91569	6262 (2.00-2.00)

The table below summarises the geometric issues observed across the polymeric chains and their fit to the electron density. The red, orange, yellow and green segments on the lower bar indicate the fraction of residues that contain outliers for ≥ 3 , 2, 1 and 0 types of geometric quality criteria. A grey segment represents the fraction of residues that are not modelled. The numeric value for each fraction is indicated below the corresponding segment, with a dot representing fractions $\leq 5\%$. The upper red bar (where present) indicates the fraction of residues that have poor fit to the electron density. The numeric value is given above the bar.

Mol	Chain	Length	Quality of chain
1	A	198	<div> <div>2%</div> <div>78%</div> <div>21%</div> <div>.</div> </div>
1	B	198	<div> <div>5%</div> <div>81%</div> <div>16%</div> <div>..</div> </div>
1	C	198	<div> <div>85%</div> <div>14%</div> <div>..</div> </div>
1	D	198	<div> <div>88%</div> <div>11%</div> <div>..</div> </div>

The following table lists non-polymeric compounds, carbohydrate monomers and non-standard

residues in protein, DNA, RNA chains that are outliers for geometric or electron-density-fit criteria:

Mol	Type	Chain	Res	Chirality	Geometry	Clashes	Electron density
4	M4M	C	803	-	-	-	X
4	M4M	D	804	-	-	-	X

2 Entry composition

There are 6 unique types of molecules in this entry. The entry contains 7363 atoms, of which 0 are hydrogens and 0 are deuteriums.

In the tables below, the ZeroOcc column contains the number of atoms modelled with zero occupancy, the AltConf column contains the number of residues with at least one atom in alternate conformation and the Trace column contains the number of residues modelled with at most 2 atoms.

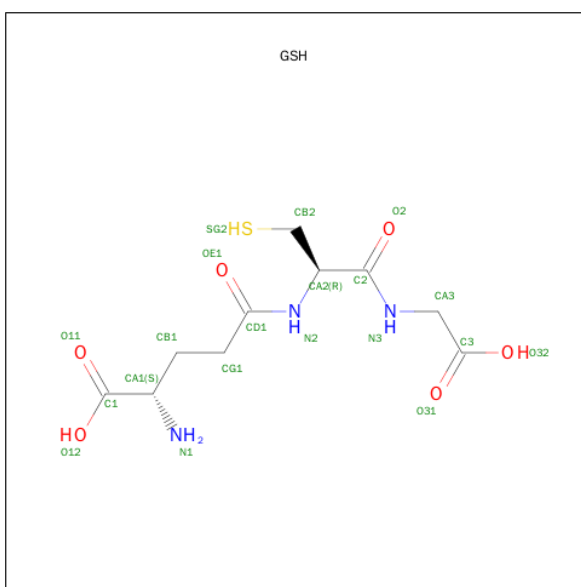
- Molecule 1 is a protein called Hematopoietic prostaglandin D synthase.

Mol	Chain	Residues	Atoms					ZeroOcc	AltConf	Trace
1	A	198	Total	C	N	O	S	0	0	0
			1638	1058	273	298	9			
1	B	198	Total	C	N	O	S	0	0	0
			1638	1058	273	298	9			
1	C	198	Total	C	N	O	S	0	0	0
			1638	1058	273	298	9			
1	D	198	Total	C	N	O	S	0	0	0
			1638	1058	273	298	9			

There are 4 discrepancies between the modelled and reference sequences:

Chain	Residue	Modelled	Actual	Comment	Reference
A	144	MET	ASN	ENGINEERED MUTATION	UNP O60760
B	344	MET	ASN	ENGINEERED MUTATION	UNP O60760
C	544	MET	ASN	ENGINEERED MUTATION	UNP O60760
D	744	MET	ASN	ENGINEERED MUTATION	UNP O60760

- Molecule 2 is GLUTATHIONE (three-letter code: GSH) (formula: C₁₀H₁₇N₃O₆S).

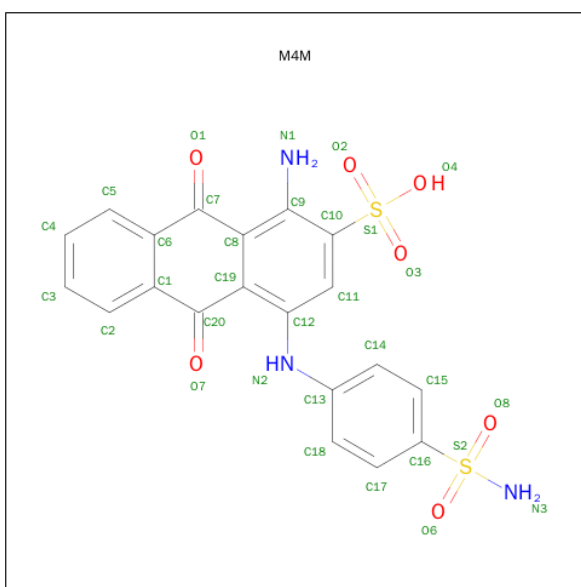


Mol	Chain	Residues	Atoms					ZeroOcc	AltConf
2	A	1	Total	C	N	O	S	0	0
			20	10	3	6	1		
2	B	1	Total	C	N	O	S	0	0
			20	10	3	6	1		

- Molecule 3 is CALCIUM ION (three-letter code: CA) (formula: Ca).

Mol	Chain	Residues	Atoms		ZeroOcc	AltConf
3	D	1	Total	Ca	0	0
			1	1		
3	C	1	Total	Ca	0	0
			1	1		

- Molecule 4 is 1-AMINO-9,10-DIOXO-4-[(4-SULFAMOYLPHENYL)AMINO]-9,10-DIHYDROANTHRACENE-2-SULFONIC ACID (three-letter code: M4M) (formula: C₂₀H₁₅N₃O₇S₂).



Mol	Chain	Residues	Atoms					ZeroOcc	AltConf
4	C	1	Total	C	N	O	S	0	0
			32	20	3	7	2		
4	D	1	Total	C	N	O	S	0	0
			32	20	3	7	2		

- Molecule 5 is GLYCEROL (three-letter code: GOL) (formula: $C_3H_8O_3$).



Mol	Chain	Residues	Atoms			ZeroOcc	AltConf
5	D	1	Total	C	O	0	0
			6	3	3		

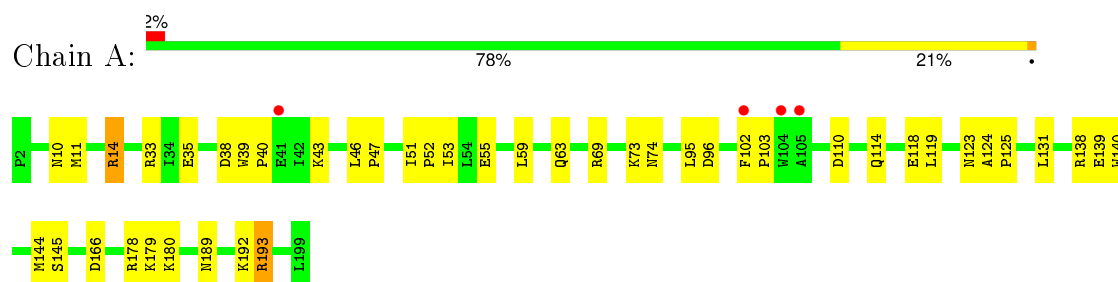
- Molecule 6 is water.

Mol	Chain	Residues	Atoms		ZeroOcc	AltConf
6	A	116	Total 116	O 116	0	0
6	B	112	Total 112	O 112	0	0
6	C	239	Total 239	O 239	0	0
6	D	232	Total 232	O 232	0	0

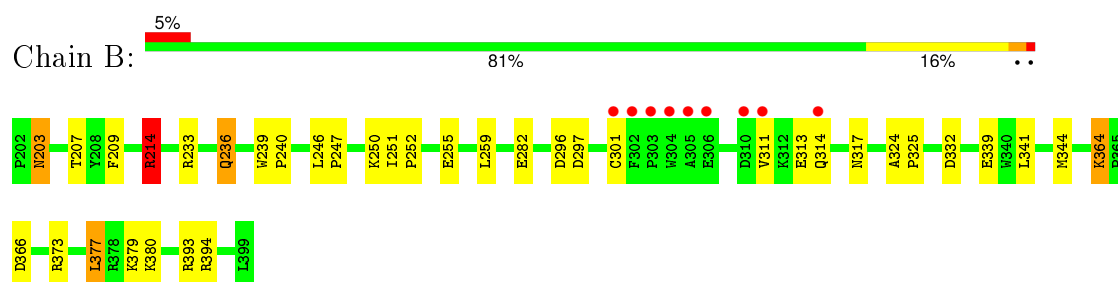
3 Residue-property plots [i](#)

These plots are drawn for all protein, RNA and DNA chains in the entry. The first graphic for a chain summarises the proportions of errors displayed in the second graphic. The second graphic shows the sequence view annotated by issues in geometry and electron density. Residues are color-coded according to the number of geometric quality criteria for which they contain at least one outlier: green = 0, yellow = 1, orange = 2 and red = 3 or more. A red dot above a residue indicates a poor fit to the electron density ($\text{RSRZ} > 2$). Stretches of 2 or more consecutive residues without any outlier are shown as a green connector. Residues present in the sample, but not in the model, are shown in grey.

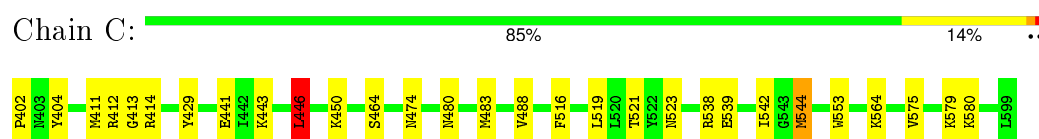
- Molecule 1: Hematopoietic prostaglandin D synthase



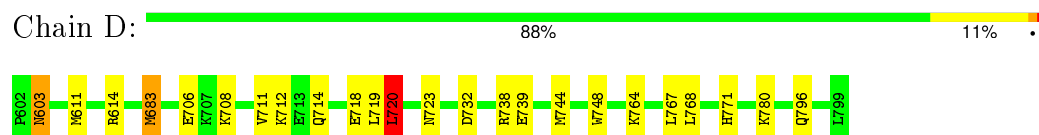
- Molecule 1: Hematopoietic prostaglandin D synthase



- Molecule 1: Hematopoietic prostaglandin D synthase



- Molecule 1: Hematopoietic prostaglandin D synthase



4 Data and refinement statistics

Property	Value	Source
Space group	P 1	Depositor
Cell constants a, b, c, α , β , γ	47.28Å 48.99Å 91.92Å 95.80° 90.99° 90.14°	Depositor
Resolution (Å)	33.86 – 2.00 33.86 – 2.00	Depositor EDS
% Data completeness (in resolution range)	97.2 (33.86-2.00) 94.1 (33.86-2.00)	Depositor EDS
R_{merge}	(Not available)	Depositor
R_{sym}	(Not available)	Depositor
$\langle I/\sigma(I) \rangle$ ¹	2.49 (at 2.00Å)	Xtriage
Refinement program	REFMAC 5.5.0109	Depositor
R, R_{free}	0.176 , 0.249 0.175 , 0.248	Depositor DCC
R_{free} test set	2735 reflections (5.35%)	DCC
Wilson B-factor (Å ²)	23.5	Xtriage
Anisotropy	0.065	Xtriage
Bulk solvent k_{sol} (e/Å ³), B_{sol} (Å ²)	0.34 , 29.4	EDS
Estimated twinning fraction	0.299 for h,-k,-l	Xtriage
L-test for twinning ²	$\langle L \rangle = 0.50$, $\langle L^2 \rangle = 0.34$	Xtriage
Outliers	0 of 53850 reflections	Xtriage
F_o, F_c correlation	0.95	EDS
Total number of atoms	7363	wwPDB-VP
Average B, all atoms (Å ²)	28.0	wwPDB-VP

Xtriage's analysis on translational NCS is as follows: *The largest off-origin peak in the Patterson function is 7.39% of the height of the origin peak. No significant pseudotranslation is detected.*

¹Intensities estimated from amplitudes.

²Theoretical values of $\langle |L| \rangle$, $\langle L^2 \rangle$ for acentric reflections are 0.5, 0.375 respectively for untwinned datasets, and 0.333, 0.2 for perfectly twinned datasets.

5 Model quality [i](#)

5.1 Standard geometry [i](#)

Bond lengths and bond angles in the following residue types are not validated in this section: GOL, CA, GSH, M4M

The Z score for a bond length (or angle) is the number of standard deviations the observed value is removed from the expected value. A bond length (or angle) with $|Z| > 5$ is considered an outlier worth inspection. RMSZ is the root-mean-square of all Z scores of the bond lengths (or angles).

Mol	Chain	Bond lengths		Bond angles	
		RMSZ	$\# Z > 5$	RMSZ	$\# Z > 5$
1	A	0.92	0/1681	0.85	4/2283 (0.2%)
1	B	0.94	0/1681	0.88	6/2283 (0.3%)
1	C	1.23	5/1681 (0.3%)	0.93	4/2283 (0.2%)
1	D	1.27	2/1681 (0.1%)	0.96	4/2283 (0.2%)
All	All	1.10	7/6724 (0.1%)	0.91	18/9132 (0.2%)

All (7) bond length outliers are listed below:

Mol	Chain	Res	Type	Atoms	Z	Observed(Å)	Ideal(Å)
1	D	718	GLU	CB-CG	6.22	1.64	1.52
1	C	412	ARG	CG-CD	5.90	1.66	1.51
1	C	516	PHE	CD1-CE1	5.73	1.50	1.39
1	C	464	SER	CB-OG	-5.70	1.34	1.42
1	C	553	TRP	CE3-CZ3	5.43	1.47	1.38
1	D	748	TRP	CE3-CZ3	5.34	1.47	1.38
1	C	429	TYR	CD2-CE2	5.31	1.47	1.39

All (18) bond angle outliers are listed below:

Mol	Chain	Res	Type	Atoms	Z	Observed(°)	Ideal(°)
1	B	214	ARG	NE-CZ-NH2	-9.98	115.31	120.30
1	C	414	ARG	NE-CZ-NH2	-8.57	116.02	120.30
1	B	214	ARG	NE-CZ-NH1	7.83	124.22	120.30
1	A	69	ARG	NE-CZ-NH2	-7.24	116.68	120.30
1	D	738	ARG	NE-CZ-NH1	-6.88	116.86	120.30
1	D	720	LEU	CB-CG-CD1	6.14	121.44	111.00
1	D	614	ARG	NE-CZ-NH2	-6.08	117.26	120.30
1	A	178	ARG	NE-CZ-NH2	-5.99	117.31	120.30
1	A	69	ARG	NE-CZ-NH1	5.77	123.18	120.30
1	B	297	ASP	CB-CG-OD2	5.75	123.48	118.30

Continued on next page...

Continued from previous page...

Mol	Chain	Res	Type	Atoms	Z	Observed(°)	Ideal(°)
1	C	538	ARG	NE-CZ-NH1	-5.62	117.49	120.30
1	C	446	LEU	CB-CG-CD1	5.15	119.75	111.00
1	B	233	ARG	NE-CZ-NH1	5.13	122.87	120.30
1	B	394	ARG	NE-CZ-NH2	-5.12	117.74	120.30
1	B	393	ARG	NE-CZ-NH1	5.07	122.83	120.30
1	D	611	MET	CA-CB-CG	5.06	121.91	113.30
1	C	411	MET	CA-CB-CG	5.04	121.88	113.30
1	A	138	ARG	NE-CZ-NH1	-5.04	117.78	120.30

There are no chirality outliers.

There are no planarity outliers.

5.2 Too-close contacts ⓘ

In the following table, the Non-H and H(model) columns list the number of non-hydrogen atoms and hydrogen atoms in the chain respectively. The H(added) column lists the number of hydrogen atoms added and optimized by MolProbity. The Clashes column lists the number of clashes within the asymmetric unit, whereas Symm-Clashes lists symmetry related clashes.

Mol	Chain	Non-H	H(model)	H(added)	Clashes	Symm-Clashes
1	A	1638	0	1622	30	0
1	B	1638	0	1622	18	0
1	C	1638	0	1622	13	0
1	D	1638	0	1622	16	0
2	A	20	0	15	2	0
2	B	20	0	15	2	0
3	C	1	0	0	0	0
3	D	1	0	0	0	0
4	C	32	0	15	5	0
4	D	32	0	15	3	0
5	D	6	0	8	1	0
6	A	116	0	0	2	0
6	B	112	0	0	1	0
6	C	239	0	0	0	0
6	D	232	0	0	2	0
All	All	7363	0	6556	83	0

The all-atom clashscore is defined as the number of clashes found per 1000 atoms (including hydrogen atoms). The all-atom clashscore for this structure is 6.

All (83) close contacts within the same asymmetric unit are listed below, sorted by their clash magnitude.

Atom-1	Atom-2	Interatomic distance (Å)	Clash overlap (Å)
4:C:803:M4M:H11	4:C:803:M4M:C14	1.67	1.16
4:C:803:M4M:H11	4:C:803:M4M:H14	1.28	1.08
4:D:804:M4M:H18	4:D:804:M4M:H11	1.58	0.84
1:D:708:LYS:HB2	1:D:711:VAL:HG12	1.60	0.84
1:A:43:LYS:HA	1:A:46:LEU:HD12	1.63	0.80
1:C:443:LYS:HA	1:C:446:LEU:HD22	1.65	0.78
1:A:43:LYS:HA	1:A:46:LEU:CD1	2.15	0.76
4:C:803:M4M:C14	4:C:803:M4M:C11	2.46	0.75
1:D:732:ASP:OD1	1:D:771:HIS:HD2	1.68	0.75
1:D:708:LYS:HB2	1:D:711:VAL:CG1	2.16	0.75
1:B:364:LYS:HD3	1:B:366:ASP:OD2	1.87	0.75
1:C:539:GLU:HG2	1:C:580:LYS:HE2	1.69	0.74
4:C:803:M4M:C11	4:C:803:M4M:H14	2.10	0.73
1:C:402:PRO:HG2	1:C:404:TYR:CZ	2.26	0.71
1:A:10:ASN:HD22	1:A:33:ARG:HH11	1.39	0.67
1:D:771:HIS:HE1	6:D:245:HOH:O	1.80	0.64
1:D:767:LEU:HD23	1:D:768:LEU:CD1	2.29	0.62
1:A:189:ASN:HA	1:A:192:LYS:HE2	1.81	0.61
1:A:193:ARG:HH11	1:A:193:ARG:HG3	1.67	0.60
1:B:313:GLU:HA	1:B:313:GLU:OE2	2.02	0.60
1:B:246:LEU:HB3	1:B:247:PRO:HD2	1.85	0.58
1:A:55:GLU:HA	1:A:59:LEU:O	2.04	0.58
1:A:51:ILE:HB	1:A:52:PRO:HA	1.86	0.57
1:B:341:LEU:HG	1:B:377:LEU:HD11	1.86	0.57
1:C:575:VAL:HG12	1:C:579:LYS:HE2	1.86	0.56
1:A:10:ASN:HD22	1:A:33:ARG:HD3	1.73	0.55
1:D:720:LEU:HG	1:D:764:LYS:HB2	1.90	0.54
1:A:14:ARG:NH2	1:A:96:ASP:OD1	2.37	0.53
1:D:732:ASP:OD1	1:D:771:HIS:CD2	2.56	0.53
1:B:214:ARG:NH2	1:B:296:ASP:OD1	2.34	0.53
1:A:166:ASP:OD1	1:A:166:ASP:N	2.36	0.53
1:A:43:LYS:CA	1:A:46:LEU:HD12	2.36	0.53
1:B:324:ALA:HB3	1:B:325:PRO:HD3	1.92	0.52
1:D:739:GLU:HG2	1:D:780:LYS:NZ	2.25	0.51
1:A:180:LYS:HD2	6:A:517:HOH:O	2.11	0.51
1:B:255:GLU:HA	1:B:259:LEU:O	2.12	0.50
1:C:488:VAL:HA	1:C:542:ILE:HD13	1.94	0.49
1:C:480:ASN:HD21	1:C:544:MET:HE3	1.78	0.49
1:B:313:GLU:O	1:B:317:ASN:HB2	2.13	0.49
1:A:10:ASN:ND2	1:A:33:ARG:HH11	2.10	0.49
6:A:290:HOH:O	1:D:683:MET:CE	2.61	0.48
1:C:521:THR:OG1	1:C:564:LYS:NZ	2.46	0.48

Continued on next page...

Continued from previous page...

Atom-1	Atom-2	Interatomic distance (Å)	Clash overlap (Å)
1:A:139:GLU:OE1	1:A:180:LYS:NZ	2.46	0.48
1:A:140:TRP:CD1	1:A:145:SER:HA	2.47	0.48
1:A:39:TRP:HB3	1:A:40:PRO:CD	2.44	0.47
1:B:214:ARG:HD3	2:B:400:GSH:O11	2.14	0.47
1:A:39:TRP:O	1:A:40:PRO:C	2.52	0.47
1:A:73:LYS:O	1:A:74:ASN:HB2	2.15	0.47
1:D:708:LYS:HE2	1:D:711:VAL:HG11	1.96	0.47
1:B:332:ASP:OD2	1:B:373:ARG:NH2	2.46	0.47
1:A:35:GLU:HB2	1:A:38:ASP:OD1	2.15	0.47
1:D:719:LEU:HA	1:D:723:ASN:HD22	1.81	0.46
1:B:282:GLU:OE1	1:C:474:ASN:ND2	2.48	0.45
1:D:706:GLU:HB3	1:D:712:LYS:HG3	1.98	0.45
1:B:203:ASN:ND2	6:B:429:HOH:O	2.46	0.45
1:B:236:GLN:H	1:B:236:GLN:HG2	1.37	0.45
1:A:14:ARG:HD3	2:A:200:GSH:O11	2.16	0.45
1:A:124:ALA:HB3	1:A:125:PRO:HD3	1.99	0.44
1:A:193:ARG:NH1	1:A:193:ARG:HG3	2.31	0.44
4:D:804:M4M:C18	4:D:804:M4M:H11	2.35	0.44
1:B:209:PHE:CE1	1:B:251:ILE:HD11	2.53	0.44
1:C:539:GLU:HG2	1:C:580:LYS:CE	2.42	0.44
1:B:207:THR:O	1:B:252:PRO:HA	2.19	0.43
1:D:739:GLU:HG2	1:D:780:LYS:HE2	2.01	0.43
1:A:39:TRP:HB3	1:A:40:PRO:HD3	2.00	0.43
1:A:46:LEU:HB3	1:A:47:PRO:HD2	2.01	0.43
1:D:603:ASN:ND2	6:D:806:HOH:O	2.52	0.42
1:A:102:PHE:HA	1:A:103:PRO:HD3	1.86	0.42
1:C:519:LEU:HA	1:C:523:ASN:HD22	1.84	0.42
1:A:10:ASN:ND2	1:A:33:ARG:HD3	2.33	0.42
1:D:767:LEU:HD23	1:D:768:LEU:HD11	2.00	0.42
1:B:239:TRP:O	1:B:240:PRO:C	2.58	0.42
1:A:14:ARG:HG3	2:A:200:GSH:SG2	2.60	0.41
1:A:46:LEU:HD23	1:A:53:ILE:HG21	2.01	0.41
4:D:804:M4M:N1	4:D:804:M4M:O1	2.51	0.41
1:C:480:ASN:ND2	1:C:544:MET:HE3	2.34	0.41
1:C:480:ASN:ND2	1:C:544:MET:CE	2.84	0.41
1:C:413:GLY:HA2	4:C:803:M4M:O1	2.20	0.41
1:D:796:GLN:HB3	5:D:1001:GOL:H2	2.03	0.41
1:A:95:LEU:HD21	1:A:131:LEU:HD11	2.03	0.40
1:B:250:LYS:HD2	2:B:400:GSH:OE1	2.21	0.40
1:B:339:GLU:HG3	1:B:380:LYS:HE3	2.03	0.40
1:A:119:LEU:HA	1:A:123:ASN:OD1	2.22	0.40

There are no symmetry-related clashes.

5.3 Torsion angles ⓘ

5.3.1 Protein backbone ⓘ

In the following table, the Percentiles column shows the percent Ramachandran outliers of the chain as a percentile score with respect to all X-ray entries followed by that with respect to entries of similar resolution.

The Analysed column shows the number of residues for which the backbone conformation was analysed, and the total number of residues.

Mol	Chain	Analysed	Favoured	Allowed	Outliers	Percentiles	
1	A	196/198 (99%)	181 (92%)	13 (7%)	2 (1%)	19	11
1	B	196/198 (99%)	191 (97%)	5 (3%)	0	100	100
1	C	196/198 (99%)	192 (98%)	4 (2%)	0	100	100
1	D	196/198 (99%)	190 (97%)	6 (3%)	0	100	100
All	All	784/792 (99%)	754 (96%)	28 (4%)	2 (0%)	46	41

All (2) Ramachandran outliers are listed below:

Mol	Chain	Res	Type
1	A	110	ASP
1	A	63	GLN

5.3.2 Protein sidechains ⓘ

In the following table, the Percentiles column shows the percent sidechain outliers of the chain as a percentile score with respect to all X-ray entries followed by that with respect to entries of similar resolution.

The Analysed column shows the number of residues for which the sidechain conformation was analysed, and the total number of residues.

Mol	Chain	Analysed	Rotameric	Outliers	Percentiles	
1	A	178/178 (100%)	171 (96%)	7 (4%)	39	35
1	B	178/178 (100%)	168 (94%)	10 (6%)	26	20
1	C	178/178 (100%)	173 (97%)	5 (3%)	51	50
1	D	178/178 (100%)	173 (97%)	5 (3%)	51	50
All	All	712/712 (100%)	685 (96%)	27 (4%)	40	36

All (27) residues with a non-rotameric sidechain are listed below:

Mol	Chain	Res	Type
1	A	11	MET
1	A	14	ARG
1	A	114	GLN
1	A	118	GLU
1	A	144	MET
1	A	179	LYS
1	A	193	ARG
1	B	203	ASN
1	B	214	ARG
1	B	236	GLN
1	B	301	CYS
1	B	311	VAL
1	B	314	GLN
1	B	344	MET
1	B	364	LYS
1	B	377	LEU
1	B	379	LYS
1	C	441	GLU
1	C	446	LEU
1	C	450	LYS
1	C	483	MET
1	C	544	MET
1	D	603	ASN
1	D	683	MET
1	D	714	GLN
1	D	720	LEU
1	D	744	MET

Some sidechains can be flipped to improve hydrogen bonding and reduce clashes. All (17) such sidechains are listed below:

Mol	Chain	Res	Type
1	A	10	ASN
1	A	62	HIS
1	A	80	ASN
1	A	114	GLN
1	A	126	HIS
1	A	170	ASN
1	B	203	ASN
1	B	317	ASN
1	B	396	GLN
1	C	480	ASN

Continued on next page...

Continued from previous page...

Mol	Chain	Res	Type
1	C	523	ASN
1	D	603	ASN
1	D	662	HIS
1	D	714	GLN
1	D	723	ASN
1	D	770	ASN
1	D	771	HIS

5.3.3 RNA ⓘ

There are no RNA molecules in this entry.

5.4 Non-standard residues in protein, DNA, RNA chains ⓘ

There are no non-standard protein/DNA/RNA residues in this entry.

5.5 Carbohydrates ⓘ

There are no carbohydrates in this entry.

5.6 Ligand geometry ⓘ

Of 7 ligands modelled in this entry, 2 are monoatomic - leaving 5 for Mogul analysis.

In the following table, the Counts columns list the number of bonds (or angles) for which Mogul statistics could be retrieved, the number of bonds (or angles) that are observed in the model and the number of bonds (or angles) that are defined in the chemical component dictionary. The Link column lists molecule types, if any, to which the group is linked. The Z score for a bond length (or angle) is the number of standard deviations the observed value is removed from the expected value. A bond length (or angle) with $|Z| > 2$ is considered an outlier worth inspection. RMSZ is the root-mean-square of all Z scores of the bond lengths (or angles).

Mol	Type	Chain	Res	Link	Bond lengths			Bond angles		
					Counts	RMSZ	# $ Z > 2$	Counts	RMSZ	# $ Z > 2$
2	GSH	A	200	-	13,19,19	3.47	3 (23%)	15,24,24	1.73	3 (20%)
2	GSH	B	400	-	13,19,19	3.45	2 (15%)	15,24,24	1.45	3 (20%)
4	M4M	C	803	-	34,35,35	3.05	10 (29%)	48,55,55	2.24	8 (16%)
5	GOL	D	1001	-	5,5,5	0.71	0	5,5,5	0.50	0
4	M4M	D	804	-	34,35,35	2.94	11 (32%)	48,55,55	2.78	13 (27%)

In the following table, the Chirals column lists the number of chiral outliers, the number of chiral centers analysed, the number of these observed in the model and the number defined in the chemical component dictionary. Similar counts are reported in the Torsion and Rings columns. '-' means no outliers of that kind were identified.

Mol	Type	Chain	Res	Link	Chirals	Torsions	Rings
2	GSH	A	200	-	-	0/18/24/24	0/0/0/0
2	GSH	B	400	-	-	0/18/24/24	0/0/0/0
4	M4M	C	803	-	-	0/16/32/32	0/4/4/4
5	GOL	D	1001	-	-	0/4/4/4	0/0/0/0
4	M4M	D	804	-	-	0/16/32/32	0/4/4/4

All (26) bond length outliers are listed below:

Mol	Chain	Res	Type	Atoms	Z	Observed(Å)	Ideal(Å)
4	D	804	M4M	C16-S2	-9.67	1.62	1.77
4	C	803	M4M	C16-S2	-9.53	1.62	1.77
4	C	803	M4M	C10-S1	-8.41	1.65	1.78
4	D	804	M4M	C10-S1	-7.26	1.67	1.78
4	C	803	M4M	S2-N3	-5.03	1.49	1.60
4	D	804	M4M	S2-N3	-4.70	1.50	1.60
4	D	804	M4M	C13-N2	-2.69	1.35	1.40
4	C	803	M4M	C13-N2	-2.59	1.35	1.40
4	C	803	M4M	C6-C7	2.03	1.52	1.48
2	A	200	GSH	CB2-CA2	2.33	1.55	1.53
4	D	804	M4M	C17-C16	2.41	1.42	1.38
4	D	804	M4M	O7-C20	2.52	1.27	1.22
4	D	804	M4M	C19-C8	2.65	1.47	1.41
4	C	803	M4M	C19-C8	3.20	1.48	1.41
4	D	804	M4M	O8-S2	3.46	1.49	1.43
4	D	804	M4M	C19-C12	3.63	1.49	1.41
4	C	803	M4M	O8-S2	3.65	1.50	1.43
4	C	803	M4M	C19-C12	3.66	1.49	1.41
4	D	804	M4M	O6-S2	3.76	1.50	1.43
4	C	803	M4M	O6-S2	3.86	1.50	1.43
4	D	804	M4M	C8-C9	5.76	1.50	1.42
4	C	803	M4M	C8-C9	5.96	1.50	1.42
2	A	200	GSH	O2-C2	8.41	1.39	1.23
2	B	400	GSH	OE1-CD1	8.42	1.40	1.23
2	A	200	GSH	OE1-CD1	8.74	1.41	1.23
2	B	400	GSH	O2-C2	8.94	1.40	1.23

All (27) bond angle outliers are listed below:

Mol	Chain	Res	Type	Atoms	Z	Observed(°)	Ideal(°)
4	D	804	M4M	C8-C19-C12	-8.48	114.74	119.88
4	D	804	M4M	O8-S2-O6	-7.79	107.84	118.80
4	C	803	M4M	O8-S2-O6	-6.85	109.18	118.80
4	C	803	M4M	C8-C19-C12	-6.27	116.08	119.88
4	D	804	M4M	C19-C12-N2	-5.53	114.86	120.47
4	C	803	M4M	C13-N2-C12	-4.94	112.76	126.60
4	D	804	M4M	C8-C9-N1	-3.98	117.11	122.88
2	A	200	GSH	OE1-CD1-CG1	-3.37	116.16	121.98
2	A	200	GSH	CB1-CG1-CD1	-3.02	106.08	113.27
4	D	804	M4M	O1-C7-C8	-2.88	116.40	121.49
4	D	804	M4M	O7-C20-C1	-2.87	116.67	120.89
2	B	400	GSH	CB1-CG1-CD1	-2.54	107.22	113.27
4	D	804	M4M	C17-C18-C13	-2.49	117.49	120.28
4	C	803	M4M	C8-C9-N1	-2.41	119.38	122.88
4	D	804	M4M	C14-C13-N2	-2.20	113.47	120.66
4	C	803	M4M	O1-C7-C8	-2.16	117.68	121.49
2	B	400	GSH	C3-CA3-N3	-2.10	106.33	111.74
4	D	804	M4M	O3-S1-O2	-2.03	101.50	112.46
4	C	803	M4M	C19-C12-N2	2.23	122.73	120.47
4	D	804	M4M	C6-C7-C8	2.38	122.07	117.99
4	C	803	M4M	O6-S2-N3	2.47	110.48	107.28
2	B	400	GSH	CG1-CD1-N2	2.53	119.95	115.83
4	D	804	M4M	C12-C19-C20	2.72	125.54	121.07
2	A	200	GSH	CA2-CB2-SG2	2.75	117.54	114.16
4	D	804	M4M	O2-S1-C10	6.05	113.14	106.17
4	D	804	M4M	O3-S1-C10	7.61	114.94	106.17
4	C	803	M4M	O3-S1-C10	7.65	114.99	106.17

There are no chirality outliers.

There are no torsion outliers.

There are no ring outliers.

5 monomers are involved in 13 short contacts:

Mol	Chain	Res	Type	Clashes	Symm-Clashes
2	A	200	GSH	2	0
2	B	400	GSH	2	0
4	C	803	M4M	5	0
5	D	1001	GOL	1	0
4	D	804	M4M	3	0

5.7 Other polymers

There are no such residues in this entry.

5.8 Polymer linkage issues

There are no chain breaks in this entry.

6 Fit of model and data ⓘ

6.1 Protein, DNA and RNA chains ⓘ

In the following table, the column labelled ‘#RSRZ> 2’ contains the number (and percentage) of RSRZ outliers, followed by percent RSRZ outliers for the chain as percentile scores relative to all X-ray entries and entries of similar resolution. The OWAB column contains the minimum, median, 95th percentile and maximum values of the occupancy-weighted average B-factor per residue. The column labelled ‘Q< 0.9’ lists the number of (and percentage) of residues with an average occupancy less than 0.9.

Mol	Chain	Analysed	<RSRZ>	#RSRZ>2	OWAB(Å ²)	Q<0.9
1	A	198/198 (100%)	-0.36	4 (2%) 68 69	14, 31, 66, 81	0
1	B	198/198 (100%)	-0.30	9 (4%) 37 38	13, 30, 78, 87	0
1	C	198/198 (100%)	-0.86	0 100 100	9, 17, 36, 46	0
1	D	198/198 (100%)	-0.82	0 100 100	7, 18, 36, 50	0
All	All	792/792 (100%)	-0.58	13 (1%) 74 75	7, 24, 58, 87	0

All (13) RSRZ outliers are listed below:

Mol	Chain	Res	Type	RSRZ
1	B	304	TRP	3.8
1	B	301	CYS	3.7
1	B	302	PHE	3.7
1	B	303	PRO	3.5
1	A	104	TRP	3.0
1	B	305	ALA	2.8
1	A	102	PHE	2.7
1	A	41	GLU	2.4
1	A	105	ALA	2.3
1	B	314	GLN	2.3
1	B	306	GLU	2.1
1	B	310	ASP	2.1
1	B	311	VAL	2.0

6.2 Non-standard residues in protein, DNA, RNA chains ⓘ

There are no non-standard protein/DNA/RNA residues in this entry.

6.3 Carbohydrates [i](#)

There are no carbohydrates in this entry.

6.4 Ligands [i](#)

In the following table, the Atoms column lists the number of modelled atoms in the group and the number defined in the chemical component dictionary. LLDF column lists the quality of electron density of the group with respect to its neighbouring residues in protein, DNA or RNA chains. The B-factors column lists the minimum, median, 95th percentile and maximum values of B factors of atoms in the group. The column labelled 'Q< 0.9' lists the number of atoms with occupancy less than 0.9.

Mol	Type	Chain	Res	Atoms	RSCC	RSR	LLDF	B-factors(\AA^2)	Q<0.9
4	M4M	C	803	32/32	0.72	0.24	7.34	25,46,82,82	0
4	M4M	D	804	32/32	0.75	0.21	4.98	23,44,86,87	0
2	GSH	A	200	20/20	0.90	0.16	1.52	29,44,58,60	0
2	GSH	B	400	20/20	0.91	0.12	1.04	25,36,54,56	0
5	GOL	D	1001	6/6	0.98	0.08	0.93	26,27,29,31	0
3	CA	C	901	1/1	0.99	0.05	-2.66	56,56,56,56	0
3	CA	D	900	1/1	0.98	0.05	-3.46	57,57,57,57	0

6.5 Other polymers [i](#)

There are no such residues in this entry.