



wwPDB X-ray Structure Validation Summary Report ⓘ

Feb 1, 2016 – 02:00 PM GMT

PDB ID : 3VQT
Title : Crystal structure analysis of the translation factor RF3
Authors : Kihira, K.; Shomura, Y.; Shibata, N.; Kitamura, M.; Higuchi, Y.
Deposited on : 2012-03-30
Resolution : 1.80 Å(reported)

This is a wwPDB X-ray Structure Validation Summary Report for a publicly released PDB entry.
We welcome your comments at validation@mail.wwpdb.org
A user guide is available at
<http://wwpdb.org/validation/2016/XrayValidationReportHelp>
with specific help available everywhere you see the ⓘ symbol.

The following versions of software and data (see [references ⓘ](#)) were used in the production of this report:

MolProbity : 4.02b-467
Mogul : 1.7 (RC4), CSD as536be (2015)
Xtriage (Phenix) : 1.9-1692
EDS : rb-20026688
Percentile statistics : 20151230.v01 (using entries in the PDB archive December 30th 2015)
Refmac : 5.8.0135
CCP4 : 6.5.0
Ideal geometry (proteins) : Engh & Huber (2001)
Ideal geometry (DNA, RNA) : Parkinson et al. (1996)
Validation Pipeline (wwPDB-VP) : trunk26865

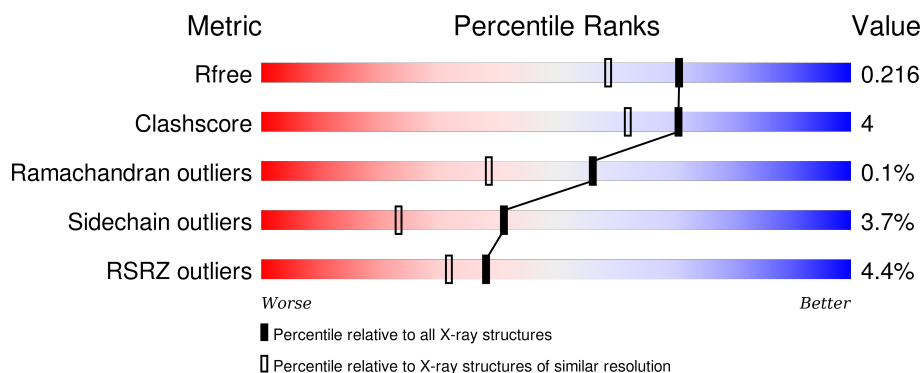
1 Overall quality at a glance

The following experimental techniques were used to determine the structure:

X-RAY DIFFRACTION

The reported resolution of this entry is 1.80 Å.

Percentile scores (ranging between 0-100) for global validation metrics of the entry are shown in the following graphic. The table shows the number of entries on which the scores are based.



Metric	Whole archive (#Entries)	Similar resolution (#Entries, resolution range(Å))
R_{free}	91344	4533 (1.80-1.80)
Clashscore	102246	5383 (1.80-1.80)
Ramachandran outliers	100387	5320 (1.80-1.80)
Sidechain outliers	100360	5319 (1.80-1.80)
RSRZ outliers	91569	4547 (1.80-1.80)

The table below summarises the geometric issues observed across the polymeric chains and their fit to the electron density. The red, orange, yellow and green segments on the lower bar indicate the fraction of residues that contain outliers for ≥ 3 , 2, 1 and 0 types of geometric quality criteria. A grey segment represents the fraction of residues that are not modelled. The numeric value for each fraction is indicated below the corresponding segment, with a dot representing fractions $\leq 5\%$. The upper red bar (where present) indicates the fraction of residues that have poor fit to the electron density. The numeric value is given above the bar.

Mol	Chain	Length	Quality of chain
1	A	548	<div> <div>5%</div> <div>78% 11% • 10%</div> </div>
1	B	548	<div> <div>3%</div> <div>80% 8% • 11%</div> </div>
1	C	548	<div> <div>4%</div> <div>76% 12% • 10%</div> </div>
1	D	548	<div> <div>4%</div> <div>78% 11% • 10%</div> </div>

2 Entry composition

There are 3 unique types of molecules in this entry. The entry contains 16607 atoms, of which 0 are hydrogens and 0 are deuteriums.

In the tables below, the ZeroOcc column contains the number of atoms modelled with zero occupancy, the AltConf column contains the number of residues with at least one atom in alternate conformation and the Trace column contains the number of residues modelled with at most 2 atoms.

- Molecule 1 is a protein called Peptide chain release factor 3.

Mol	Chain	Residues	Atoms					ZeroOcc	AltConf	Trace
1	A	495	Total	C	N	O	S	0	0	0
			3899	2471	683	724	21			
1	B	490	Total	C	N	O	S	0	0	0
			3860	2451	674	715	20			
1	C	491	Total	C	N	O	S	0	0	0
			3869	2456	675	718	20			
1	D	494	Total	C	N	O	S	0	0	0
			3900	2471	686	723	20			

There are 76 discrepancies between the modelled and reference sequences:

Chain	Residue	Modelled	Actual	Comment	Reference
A	-18	GLY	-	EXPRESSION TAG	UNP B8DIL5
A	-17	SER	-	EXPRESSION TAG	UNP B8DIL5
A	-16	SER	-	EXPRESSION TAG	UNP B8DIL5
A	-15	HIS	-	EXPRESSION TAG	UNP B8DIL5
A	-14	HIS	-	EXPRESSION TAG	UNP B8DIL5
A	-13	HIS	-	EXPRESSION TAG	UNP B8DIL5
A	-12	HIS	-	EXPRESSION TAG	UNP B8DIL5
A	-11	HIS	-	EXPRESSION TAG	UNP B8DIL5
A	-10	HIS	-	EXPRESSION TAG	UNP B8DIL5
A	-9	SER	-	EXPRESSION TAG	UNP B8DIL5
A	-8	SER	-	EXPRESSION TAG	UNP B8DIL5
A	-7	GLY	-	EXPRESSION TAG	UNP B8DIL5
A	-6	LEU	-	EXPRESSION TAG	UNP B8DIL5
A	-5	VAL	-	EXPRESSION TAG	UNP B8DIL5
A	-4	PRO	-	EXPRESSION TAG	UNP B8DIL5
A	-3	ARG	-	EXPRESSION TAG	UNP B8DIL5
A	-2	GLY	-	EXPRESSION TAG	UNP B8DIL5
A	-1	SER	-	EXPRESSION TAG	UNP B8DIL5
A	0	HIS	-	EXPRESSION TAG	UNP B8DIL5
B	-18	GLY	-	EXPRESSION TAG	UNP B8DIL5
B	-17	SER	-	EXPRESSION TAG	UNP B8DIL5

Continued on next page...

Continued from previous page...

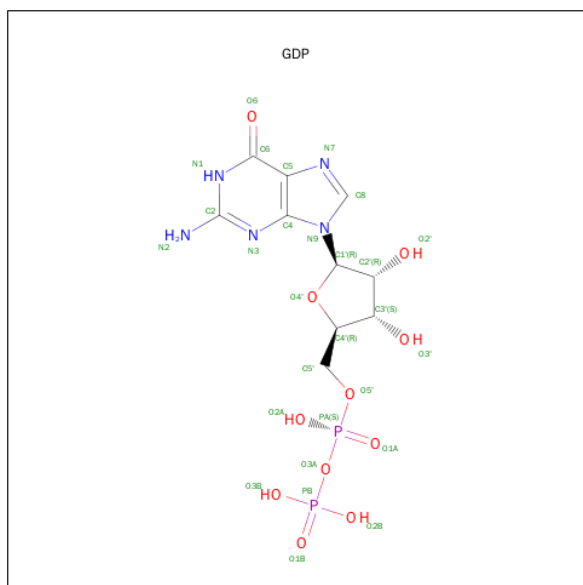
Chain	Residue	Modelled	Actual	Comment	Reference
B	-16	SER	-	EXPRESSION TAG	UNP B8DIL5
B	-15	HIS	-	EXPRESSION TAG	UNP B8DIL5
B	-14	HIS	-	EXPRESSION TAG	UNP B8DIL5
B	-13	HIS	-	EXPRESSION TAG	UNP B8DIL5
B	-12	HIS	-	EXPRESSION TAG	UNP B8DIL5
B	-11	HIS	-	EXPRESSION TAG	UNP B8DIL5
B	-10	HIS	-	EXPRESSION TAG	UNP B8DIL5
B	-9	SER	-	EXPRESSION TAG	UNP B8DIL5
B	-8	SER	-	EXPRESSION TAG	UNP B8DIL5
B	-7	GLY	-	EXPRESSION TAG	UNP B8DIL5
B	-6	LEU	-	EXPRESSION TAG	UNP B8DIL5
B	-5	VAL	-	EXPRESSION TAG	UNP B8DIL5
B	-4	PRO	-	EXPRESSION TAG	UNP B8DIL5
B	-3	ARG	-	EXPRESSION TAG	UNP B8DIL5
B	-2	GLY	-	EXPRESSION TAG	UNP B8DIL5
B	-1	SER	-	EXPRESSION TAG	UNP B8DIL5
B	0	HIS	-	EXPRESSION TAG	UNP B8DIL5
C	-18	GLY	-	EXPRESSION TAG	UNP B8DIL5
C	-17	SER	-	EXPRESSION TAG	UNP B8DIL5
C	-16	SER	-	EXPRESSION TAG	UNP B8DIL5
C	-15	HIS	-	EXPRESSION TAG	UNP B8DIL5
C	-14	HIS	-	EXPRESSION TAG	UNP B8DIL5
C	-13	HIS	-	EXPRESSION TAG	UNP B8DIL5
C	-12	HIS	-	EXPRESSION TAG	UNP B8DIL5
C	-11	HIS	-	EXPRESSION TAG	UNP B8DIL5
C	-10	HIS	-	EXPRESSION TAG	UNP B8DIL5
C	-9	SER	-	EXPRESSION TAG	UNP B8DIL5
C	-8	SER	-	EXPRESSION TAG	UNP B8DIL5
C	-7	GLY	-	EXPRESSION TAG	UNP B8DIL5
C	-6	LEU	-	EXPRESSION TAG	UNP B8DIL5
C	-5	VAL	-	EXPRESSION TAG	UNP B8DIL5
C	-4	PRO	-	EXPRESSION TAG	UNP B8DIL5
C	-3	ARG	-	EXPRESSION TAG	UNP B8DIL5
C	-2	GLY	-	EXPRESSION TAG	UNP B8DIL5
C	-1	SER	-	EXPRESSION TAG	UNP B8DIL5
C	0	HIS	-	EXPRESSION TAG	UNP B8DIL5
D	-18	GLY	-	EXPRESSION TAG	UNP B8DIL5
D	-17	SER	-	EXPRESSION TAG	UNP B8DIL5
D	-16	SER	-	EXPRESSION TAG	UNP B8DIL5
D	-15	HIS	-	EXPRESSION TAG	UNP B8DIL5
D	-14	HIS	-	EXPRESSION TAG	UNP B8DIL5
D	-13	HIS	-	EXPRESSION TAG	UNP B8DIL5

Continued on next page...

Continued from previous page...

Chain	Residue	Modelled	Actual	Comment	Reference
D	-12	HIS	-	EXPRESSION TAG	UNP B8DIL5
D	-11	HIS	-	EXPRESSION TAG	UNP B8DIL5
D	-10	HIS	-	EXPRESSION TAG	UNP B8DIL5
D	-9	SER	-	EXPRESSION TAG	UNP B8DIL5
D	-8	SER	-	EXPRESSION TAG	UNP B8DIL5
D	-7	GLY	-	EXPRESSION TAG	UNP B8DIL5
D	-6	LEU	-	EXPRESSION TAG	UNP B8DIL5
D	-5	VAL	-	EXPRESSION TAG	UNP B8DIL5
D	-4	PRO	-	EXPRESSION TAG	UNP B8DIL5
D	-3	ARG	-	EXPRESSION TAG	UNP B8DIL5
D	-2	GLY	-	EXPRESSION TAG	UNP B8DIL5
D	-1	SER	-	EXPRESSION TAG	UNP B8DIL5
D	0	HIS	-	EXPRESSION TAG	UNP B8DIL5

- Molecule 2 is GUANOSINE-5'-DIPHOSPHATE (three-letter code: GDP) (formula: $C_{10}H_{15}N_5O_{11}P_2$).




- Molecule 3 is water.

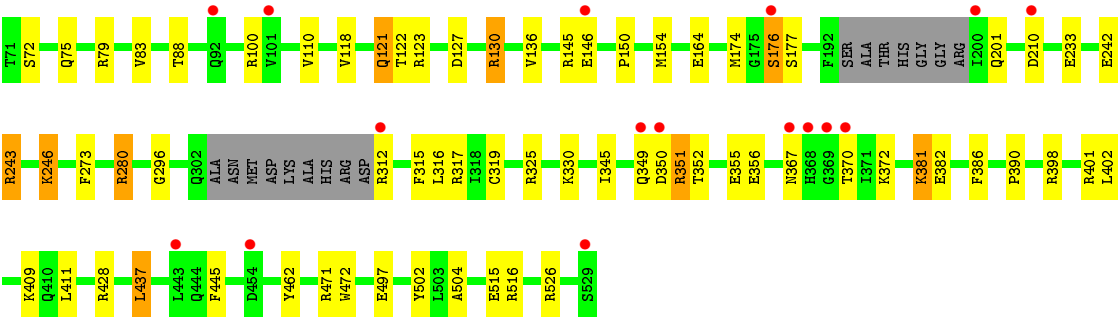
Mol	Chain	Residues	Atoms		ZeroOcc	AltConf
3	A	266	Total 266	O 266	0	0
3	B	227	Total 227	O 227	0	0
3	C	224	Total 224	O 224	0	0
3	D	250	Total 250	O 250	0	0

These plots are drawn for all protein, RNA and DNA chains in the entry. The first graphic for a chain summarises the proportions of errors displayed in the second graphic. The second graphic shows the sequence view annotated by issues in geometry and electron density. Residues are color-coded according to the number of geometric quality criteria for which they contain at least one outlier: green = 0, yellow = 1, orange = 2 and red = 3 or more. A red dot above a residue indicates a poor fit to the electron density ($\text{RSRZ} > 2$). Stretches of 2 or more consecutive residues without any outlier are shown as a green connector. Residues present in the sample, but not in the model, are shown in grey.

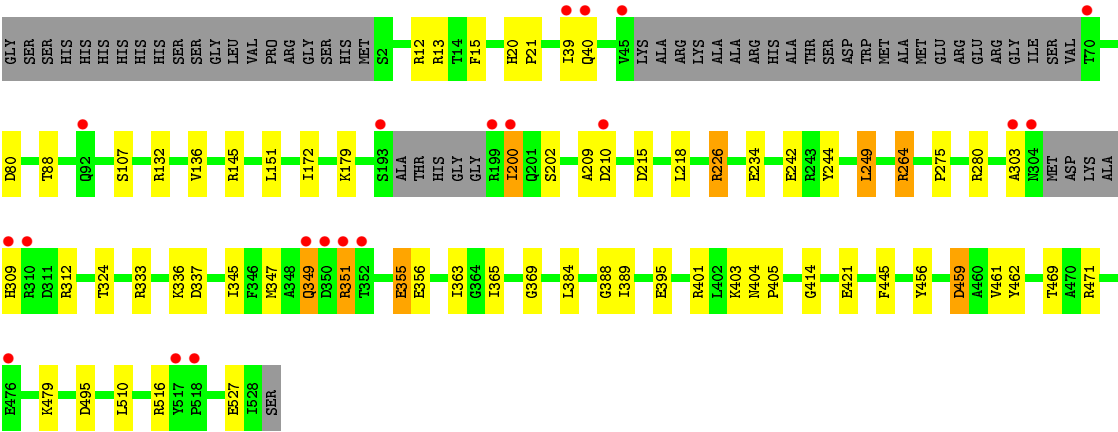
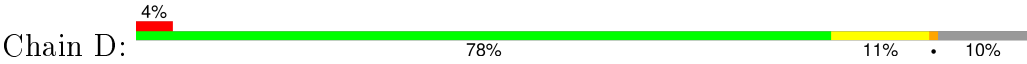
- [illegible]

- Chain B:
-
- 80% 8% 3% 11%
- GLY SER HIS HIS HIS HIS HIS SER SER LEU VAL PRO ARG GLY SER HIS MET S2 F15 I39 Q40 V45 K46 A47 ARG LYS LYS ALA ALA ARG HIS ALA THR SER ASP TRP MET MET MET MET ARG ARG ARG ILE SER SER T70 T71 S72 D87 H91 D91
- L109 I112 K116 E119 R132 P150 M154 I157 L161 E164 S176 S177 F192 SER ALA THR HIS GLY GLY ARG Q201 D215 R226 M227 D240 R243 R280 Q302 A303 ASN MET ASP LYS ALA HIS ARG ASP R312 R317
- R325 K330 A343 Q349 D350 R351 T352 E355 N367 H368 I371 K372 I373 K381 G388 R398 R399 V400 N404 K407 R428 P429 L430 L443 D446 D454 R471 W472 K478 F481 D495 R509 R526 E527 I528 SER

- Chain C: 



● Molecule 1: Peptide chain release factor 3



4 Data and refinement statistics

Property	Value	Source
Space group	P 1	Depositor
Cell constants a, b, c, α , β , γ	47.39Å 82.80Å 148.29Å 104.21° 89.78° 89.63°	Depositor
Resolution (Å)	33.87 – 1.80 33.86 – 1.80	Depositor EDS
% Data completeness (in resolution range)	93.5 (33.87-1.80) 86.0 (33.86-1.80)	Depositor EDS
R_{merge}	0.05	Depositor
R_{sym}	(Not available)	Depositor
$\langle I/\sigma(I) \rangle$ ¹	2.52 (at 1.81Å)	Xtriage
Refinement program	REFMAC 5.5.0109	Depositor
R, R_{free}	0.177 , 0.218 0.177 , 0.216	Depositor DCC
R_{free} test set	9597 reflections (5.34%)	DCC
Wilson B-factor (Å ²)	25.2	Xtriage
Anisotropy	0.016	Xtriage
Bulk solvent k_{sol} (e/Å ³), B_{sol} (Å ²)	0.39 , 53.7	EDS
Estimated twinning fraction	0.026 for h,-k,-l 0.037 for -h,k,-k-l 0.003 for -h,-k,k+l	Xtriage
L-test for twinning ²	$\langle L \rangle = 0.50$, $\langle L^2 \rangle = 0.33$	Xtriage
Outliers	0 of 189405 reflections	Xtriage
F_o, F_c correlation	0.96	EDS
Total number of atoms	16607	wwPDB-VP
Average B, all atoms (Å ²)	32.0	wwPDB-VP

Xtriage's analysis on translational NCS is as follows: *The largest off-origin peak in the Patterson function is 4.36% of the height of the origin peak. No significant pseudotranslation is detected.*

¹Intensities estimated from amplitudes.

²Theoretical values of $\langle |L| \rangle$, $\langle L^2 \rangle$ for acentric reflections are 0.5, 0.375 respectively for untwinned datasets, and 0.333, 0.2 for perfectly twinned datasets.

5 Model quality ⓘ

5.1 Standard geometry ⓘ

Bond lengths and bond angles in the following residue types are not validated in this section: GDP

The Z score for a bond length (or angle) is the number of standard deviations the observed value is removed from the expected value. A bond length (or angle) with $|Z| > 5$ is considered an outlier worth inspection. RMSZ is the root-mean-square of all Z scores of the bond lengths (or angles).

Mol	Chain	Bond lengths		Bond angles	
		RMSZ	$\# Z > 5$	RMSZ	$\# Z > 5$
1	A	1.05	3/3978 (0.1%)	0.98	10/5376 (0.2%)
1	B	1.04	4/3939 (0.1%)	0.99	10/5326 (0.2%)
1	C	1.06	4/3948 (0.1%)	1.09	17/5337 (0.3%)
1	D	1.07	3/3980 (0.1%)	1.00	14/5381 (0.3%)
All	All	1.06	14/15845 (0.1%)	1.02	51/21420 (0.2%)

Chiral center outliers are detected by calculating the chiral volume of a chiral center and verifying if the center is modelled as a planar moiety or with the opposite hand. A planarity outlier is detected by checking planarity of atoms in a peptide group, atoms in a mainchain group or atoms of a sidechain that are expected to be planar.

Mol	Chain	#Chirality outliers	#Planarity outliers
1	C	0	1

The worst 5 of 14 bond length outliers are listed below:

Mol	Chain	Res	Type	Atoms	Z	Observed(Å)	Ideal(Å)
1	A	479	LYS	CE-NZ	10.05	1.74	1.49
1	B	176	SER	CB-OG	8.60	1.53	1.42
1	C	176	SER	CB-OG	-7.89	1.31	1.42
1	C	177	SER	N-CA	7.18	1.60	1.46
1	C	176	SER	CA-CB	7.03	1.63	1.52

The worst 5 of 51 bond angle outliers are listed below:

Mol	Chain	Res	Type	Atoms	Z	Observed(°)	Ideal(°)
1	C	100	ARG	NE-CZ-NH1	20.65	130.62	120.30
1	C	100	ARG	NE-CZ-NH2	-16.62	111.99	120.30
1	C	130	ARG	NE-CZ-NH2	-12.58	114.01	120.30
1	C	130	ARG	NE-CZ-NH1	10.58	125.59	120.30

Continued on next page...

Continued from previous page...

Mol	Chain	Res	Type	Atoms	Z	Observed(°)	Ideal(°)
1	D	249	LEU	CA-CB-CG	10.57	139.62	115.30

There are no chirality outliers.

All (1) planarity outliers are listed below:

Mol	Chain	Res	Type	Group
1	C	351	ARG	Peptide

5.2 Too-close contacts [i](#)

In the following table, the Non-H and H(model) columns list the number of non-hydrogen atoms and hydrogen atoms in the chain respectively. The H(added) column lists the number of hydrogen atoms added and optimized by MolProbity. The Clashes column lists the number of clashes within the asymmetric unit, whereas Symm-Clashes lists symmetry related clashes.

Mol	Chain	Non-H	H(model)	H(added)	Clashes	Symm-Clashes
1	A	3899	0	3871	44	0
1	B	3860	0	3832	29	1
1	C	3869	0	3841	33	0
1	D	3900	0	3862	35	0
2	A	28	0	12	0	0
2	B	28	0	12	1	0
2	C	28	0	12	0	0
2	D	28	0	12	0	0
3	A	266	0	0	7	0
3	B	227	0	0	2	0
3	C	224	0	0	6	0
3	D	250	0	0	3	0
All	All	16607	0	15454	138	1

The all-atom clashscore is defined as the number of clashes found per 1000 atoms (including hydrogen atoms). The all-atom clashscore for this structure is 4.

The worst 5 of 138 close contacts within the same asymmetric unit are listed below, sorted by their clash magnitude.

Atom-1	Atom-2	Interatomic distance (Å)	Clash overlap (Å)
1:A:479:LYS:NZ	1:A:479:LYS:CE	1.74	1.47
1:A:264:ARG:HH11	1:A:264:ARG:CG	1.61	1.12
1:A:264:ARG:NH1	1:A:264:ARG:HG2	1.48	1.04

Continued on next page...

Continued from previous page...

Atom-1	Atom-2	Interatomic distance (Å)	Clash overlap (Å)
1:A:478:LYS:HE2	3:A:852:HOH:O	1.73	0.88
1:C:130:ARG:HD3	3:C:872:HOH:O	1.73	0.88

All (1) symmetry-related close contacts are listed below. The label for Atom-2 includes the symmetry operator and encoded unit-cell translations to be applied.

Atom-1	Atom-2	Interatomic distance (Å)	Clash overlap (Å)
1:B:446:ASP:OD2	1:B:478:LYS:NZ[1_655]	2.14	0.06

5.3 Torsion angles [i](#)

5.3.1 Protein backbone [i](#)

In the following table, the Percentiles column shows the percent Ramachandran outliers of the chain as a percentile score with respect to all X-ray entries followed by that with respect to entries of similar resolution.

The Analysed column shows the number of residues for which the backbone conformation was analysed, and the total number of residues.

Mol	Chain	Analysed	Favoured	Allowed	Outliers	Percentiles	
1	A	487/548 (89%)	475 (98%)	12 (2%)	0	100	100
1	B	482/548 (88%)	475 (98%)	7 (2%)	0	100	100
1	C	483/548 (88%)	475 (98%)	7 (1%)	1 (0%)	52	35
1	D	486/548 (89%)	478 (98%)	8 (2%)	0	100	100
All	All	1938/2192 (88%)	1903 (98%)	34 (2%)	1 (0%)	56	38

All (1) Ramachandran outliers are listed below:

Mol	Chain	Res	Type
1	C	390	PRO

5.3.2 Protein sidechains [i](#)

In the following table, the Percentiles column shows the percent sidechain outliers of the chain as a percentile score with respect to all X-ray entries followed by that with respect to entries of similar resolution.

The Analysed column shows the number of residues for which the sidechain conformation was analysed, and the total number of residues.

Mol	Chain	Analysed	Rotameric	Outliers	Percentiles	
1	A	412/453 (91%)	398 (97%)	14 (3%)	44	26
1	B	407/453 (90%)	398 (98%)	9 (2%)	60	45
1	C	409/453 (90%)	388 (95%)	21 (5%)	29	12
1	D	412/453 (91%)	396 (96%)	16 (4%)	39	21
All	All	1640/1812 (90%)	1580 (96%)	60 (4%)	41	23

5 of 60 residues with a non-rotameric sidechain are listed below:

Mol	Chain	Res	Type
1	C	122	THR
1	C	350	ASP
1	D	351	ARG
1	C	233	GLU
1	C	352	THR

Some sidechains can be flipped to improve hydrogen bonding and reduce clashes. There are no such sidechains identified.

5.3.3 RNA [i](#)

There are no RNA molecules in this entry.

5.4 Non-standard residues in protein, DNA, RNA chains [i](#)

There are no non-standard protein/DNA/RNA residues in this entry.

5.5 Carbohydrates [i](#)

There are no carbohydrates in this entry.

5.6 Ligand geometry [i](#)

4 ligands are modelled in this entry.

In the following table, the Counts columns list the number of bonds (or angles) for which Mogul statistics could be retrieved, the number of bonds (or angles) that are observed in the model and the number of bonds (or angles) that are defined in the chemical component dictionary. The Link

column lists molecule types, if any, to which the group is linked. The Z score for a bond length (or angle) is the number of standard deviations the observed value is removed from the expected value. A bond length (or angle) with $|Z| > 2$ is considered an outlier worth inspection. RMSZ is the root-mean-square of all Z scores of the bond lengths (or angles).

Mol	Type	Chain	Res	Link	Bond lengths			Bond angles		
					Counts	RMSZ	# Z > 2	Counts	RMSZ	# Z > 2
2	GDP	A	601	-	23,30,30	1.14	2 (8%)	30,47,47	1.75	8 (26%)
2	GDP	B	601	-	23,30,30	1.39	3 (13%)	30,47,47	2.01	11 (36%)
2	GDP	C	601	-	23,30,30	1.57	4 (17%)	30,47,47	2.39	12 (40%)
2	GDP	D	601	-	23,30,30	1.27	3 (13%)	30,47,47	2.13	10 (33%)

In the following table, the Chirals column lists the number of chiral outliers, the number of chiral centers analysed, the number of these observed in the model and the number defined in the chemical component dictionary. Similar counts are reported in the Torsion and Rings columns. '-' means no outliers of that kind were identified.

Mol	Type	Chain	Res	Link	Chirals	Torsions	Rings
2	GDP	A	601	-	-	0/12/32/32	0/3/3/3
2	GDP	B	601	-	-	0/12/32/32	0/3/3/3
2	GDP	C	601	-	-	0/12/32/32	0/3/3/3
2	GDP	D	601	-	-	0/12/32/32	0/3/3/3

The worst 5 of 12 bond length outliers are listed below:

Mol	Chain	Res	Type	Atoms	Z	Observed(Å)	Ideal(Å)
2	C	601	GDP	PB-O3B	-2.30	1.46	1.54
2	B	601	GDP	C6-N1	2.13	1.37	1.33
2	D	601	GDP	C6-C5	2.31	1.45	1.41
2	C	601	GDP	O4'-C1'	2.45	1.44	1.41
2	A	601	GDP	C6-N1	2.61	1.37	1.33

The worst 5 of 41 bond angle outliers are listed below:

Mol	Chain	Res	Type	Atoms	Z	Observed(°)	Ideal(°)
2	D	601	GDP	C6-C5-C4	-4.44	115.59	120.90
2	B	601	GDP	C6-C5-C4	-4.39	115.65	120.90
2	C	601	GDP	C6-C5-C4	-4.27	115.79	120.90
2	C	601	GDP	C5-C6-N1	-4.27	117.75	123.59
2	A	601	GDP	C6-C5-C4	-3.90	116.24	120.90

There are no chirality outliers.

There are no torsion outliers.

There are no ring outliers.

1 monomer is involved in 1 short contact:

Mol	Chain	Res	Type	Clashes	Symm-Clashes
2	B	601	GDP	1	0

5.7 Other polymers [i](#)

There are no such residues in this entry.

5.8 Polymer linkage issues [i](#)

There are no chain breaks in this entry.

6 Fit of model and data [i](#)

6.1 Protein, DNA and RNA chains [i](#)

In the following table, the column labelled ‘#RSRZ> 2’ contains the number (and percentage) of RSRZ outliers, followed by percent RSRZ outliers for the chain as percentile scores relative to all X-ray entries and entries of similar resolution. The OWAB column contains the minimum, median, 95th percentile and maximum values of the occupancy-weighted average B-factor per residue. The column labelled ‘Q< 0.9’ lists the number of (and percentage) of residues with an average occupancy less than 0.9.

Mol	Chain	Analysed	<RSRZ>	#RSRZ>2	OWAB(Å ²)	Q<0.9
1	A	495/548 (90%)	0.03	25 (5%) 32 26	15, 28, 53, 73	0
1	B	490/548 (89%)	0.02	17 (3%) 48 42	16, 31, 51, 71	0
1	C	491/548 (89%)	0.05	24 (4%) 33 27	16, 30, 53, 70	0
1	D	494/548 (90%)	0.00	20 (4%) 42 36	15, 28, 52, 75	0
All	All	1970/2192 (89%)	0.03	86 (4%) 38 32	15, 29, 53, 75	0

The worst 5 of 86 RSRZ outliers are listed below:

Mol	Chain	Res	Type	RSRZ
1	C	368	HIS	8.7
1	C	200	ILE	7.8
1	A	69	VAL	6.7
1	B	92	GLN	6.0
1	B	200	ILE	5.9

6.2 Non-standard residues in protein, DNA, RNA chains [i](#)

There are no non-standard protein/DNA/RNA residues in this entry.

6.3 Carbohydrates [i](#)

There are no carbohydrates in this entry.

6.4 Ligands [i](#)

In the following table, the Atoms column lists the number of modelled atoms in the group and the number defined in the chemical component dictionary. LLDF column lists the quality of electron density of the group with respect to its neighbouring residues in protein, DNA or RNA chains. The B-factors column lists the minimum, median, 95th percentile and maximum values of B factors

of atoms in the group. The column labelled 'Q< 0.9' lists the number of atoms with occupancy less than 0.9.

Mol	Type	Chain	Res	Atoms	RSCC	RSR	LLDF	B-factors(\AA^2)	Q<0.9
2	GDP	C	601	28/28	0.97	0.09	-0.08	24,34,39,44	0
2	GDP	B	601	28/28	0.97	0.09	-0.22	26,35,37,41	0
2	GDP	A	601	28/28	0.98	0.06	-0.57	22,27,31,33	0
2	GDP	D	601	28/28	0.99	0.06	-0.72	21,26,30,32	0

6.5 Other polymers [i](#)

There are no such residues in this entry.