



wwPDB X-ray Structure Validation Summary Report ⓘ

Feb 1, 2016 – 06:11 AM GMT

PDB ID : 2W76
Title : STRUCTURES OF P. AERUGINOSA FPVA BOUND TO HETEROLOGOUS PYOVERDINES: FPVA-PVD(PA6)-FE COMPLEX
Authors : Greenwald, J.; Nader, M.; Celia, H.; Gruffaz, C.; Meyer, J.-M.; Schalk, I.J.; Pattus, F.
Deposited on : 2008-12-20
Resolution : 2.80 Å(reported)

This is a wwPDB X-ray Structure Validation Summary Report for a publicly released PDB entry.
We welcome your comments at validation@mail.wwpdb.org
A user guide is available at
<http://wwpdb.org/validation/2016/XrayValidationReportHelp>
with specific help available everywhere you see the ⓘ symbol.

The following versions of software and data (see [references ⓘ](#)) were used in the production of this report:

MolProbity : 4.02b-467
Mogul : 1.7 (RC4), CSD as536be (2015)
Xtriage (Phenix) : 1.9-1692
EDS : rb-20026688
Percentile statistics : 20151230.v01 (using entries in the PDB archive December 30th 2015)
Refmac : 5.8.0135
CCP4 : 6.5.0
Ideal geometry (proteins) : Engh & Huber (2001)
Ideal geometry (DNA, RNA) : Parkinson et al. (1996)
Validation Pipeline (wwPDB-VP) : trunk26865

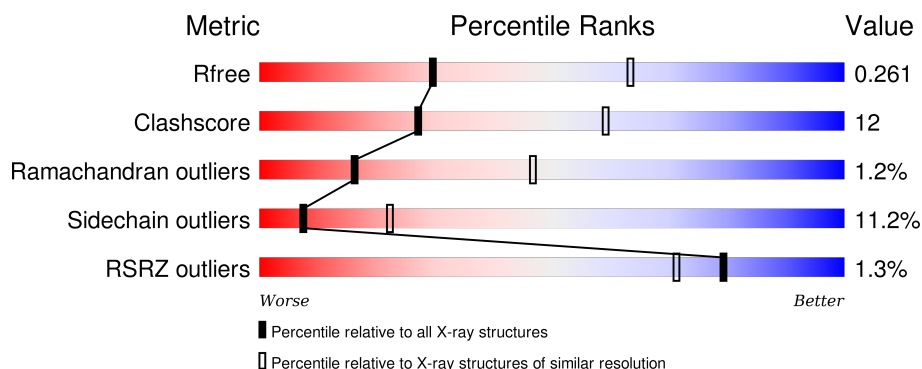
1 Overall quality at a glance ⓘ

The following experimental techniques were used to determine the structure:

X-RAY DIFFRACTION

The reported resolution of this entry is 2.80 Å.

Percentile scores (ranging between 0-100) for global validation metrics of the entry are shown in the following graphic. The table shows the number of entries on which the scores are based.



Metric	Whole archive (#Entries)	Similar resolution (#Entries, resolution range(Å))
R_{free}	91344	2393 (2.80-2.80)
Clashscore	102246	2827 (2.80-2.80)
Ramachandran outliers	100387	2782 (2.80-2.80)
Sidechain outliers	100360	2784 (2.80-2.80)
RSRZ outliers	91569	2404 (2.80-2.80)

The table below summarises the geometric issues observed across the polymeric chains and their fit to the electron density. The red, orange, yellow and green segments on the lower bar indicate the fraction of residues that contain outliers for ≥ 3 , 2, 1 and 0 types of geometric quality criteria. A grey segment represents the fraction of residues that are not modelled. The numeric value for each fraction is indicated below the corresponding segment, with a dot representing fractions $\leq 5\%$. The upper red bar (where present) indicates the fraction of residues that have poor fit to the electron density. The numeric value is given above the bar.

Mol	Chain	Length	Quality of chain
1	A	772	<div> <div>69%</div> <div>25%</div> <div>5%</div> </div>
1	B	772	<div> <div>66%</div> <div>28%</div> </div>
2	C	7	<div> <div>14%</div> <div>57%</div> <div>29%</div> </div>

The following table lists non-polymeric compounds, carbohydrate monomers and non-standard residues in protein, DNA, RNA chains that are outliers for geometric or electron-density-fit criteria:

Mol	Type	Chain	Res	Chirality	Geometry	Clashes	Electron density
2	DSN	C	3	X	-	-	-
3	N8E	A	1816	-	-	-	X
3	N8E	A	1817[A]	-	-	-	X
4	PO4	A	1823	-	-	-	X
4	PO4	B	1816	-	-	-	X

2 Entry composition

There are 6 unique types of molecules in this entry. The entry contains 12314 atoms, of which 0 are hydrogens and 0 are deuteriums.

In the tables below, the ZeroOcc column contains the number of atoms modelled with zero occupancy, the AltConf column contains the number of residues with at least one atom in alternate conformation and the Trace column contains the number of residues modelled with at most 2 atoms.

- Molecule 1 is a protein called FERRIPYOVERDINE RECEPTOR.

Mol	Chain	Residues	Atoms					ZeroOcc	AltConf	Trace
1	A	772	Total	C	N	O	S	0	0	0
			6114	3845	1046	1211	12			
1	B	754	Total	C	N	O	S	0	0	0
			5994	3775	1027	1181	11			

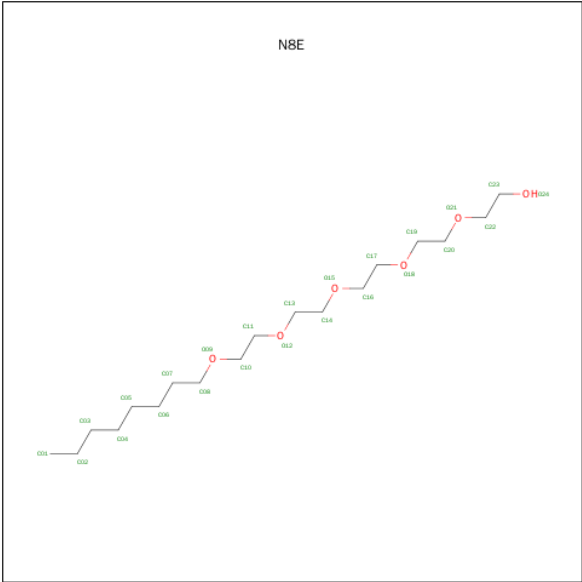
- Molecule 2 is a protein called PYOVERDIN R.

Mol	Chain	Residues	Atoms				ZeroOcc	AltConf	Trace
2	C	7	Total	C	N	O	0	0	0
			57	31	12	14			

There is a discrepancy between the modelled and reference sequences:

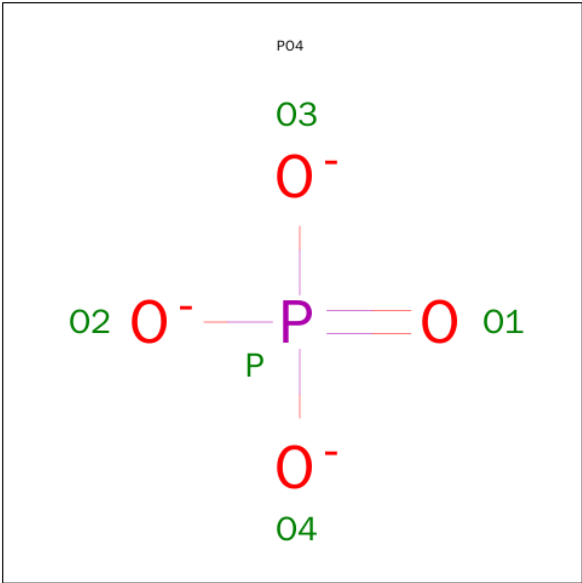
Chain	Residue	Modelled	Actual	Comment	Reference
C	8	FHO	FH7	CONFLICT	NOR NOR0020

- Molecule 3 is 3,6,9,12,15-PENTAOXATRICOSAN-1-OL (three-letter code: N8E) (formula: C₁₈H₃₈O₆).



Mol	Chain	Residues	Atoms			ZeroOcc	AltConf
3	A	1	Total	C	O	0	0
			24	18	6		
3	A	1	Total	C	O	0	1
			48	36	12		

- Molecule 4 is PHOSPHATE ION (three-letter code: PO4) (formula: O₄P).



Mol	Chain	Residues	Atoms			ZeroOcc	AltConf
4	A	1	Total	O	P	0	0
			5	4	1		
4	A	1	Total	O	P	0	0
			5	4	1		

Continued on next page...

Mol	Chain	Residues	Atoms			ZeroOcc	AltConf
4	A	1	Total 5	O 4	P 1	0	0
4	A	1	Total 5	O 4	P 1	0	0
4	A	1	Total 5	O 4	P 1	0	0
4	A	1	Total 5	O 4	P 1	0	0
4	B	1	Total 5	O 4	P 1	0	0
4	B	1	Total 5	O 4	P 1	0	0
4	B	1	Total 5	O 4	P 1	0	0
4	B	1	Total 5	O 4	P 1	0	0

-
- ORTEP diagram of the chemical structure of PVE. The structure shows a central benzene ring (C3-C10) substituted with a 2,4,6-trihydroxyphenyl group (C5-C12), a 2,4,6-trihydroxyphenyl group (C7-C14), and a 2,4,6-trihydroxyphenyl group (C15-C18). The structure is labeled with atom names (C, O, N) and displacement ellipsoids at the 50% probability level.

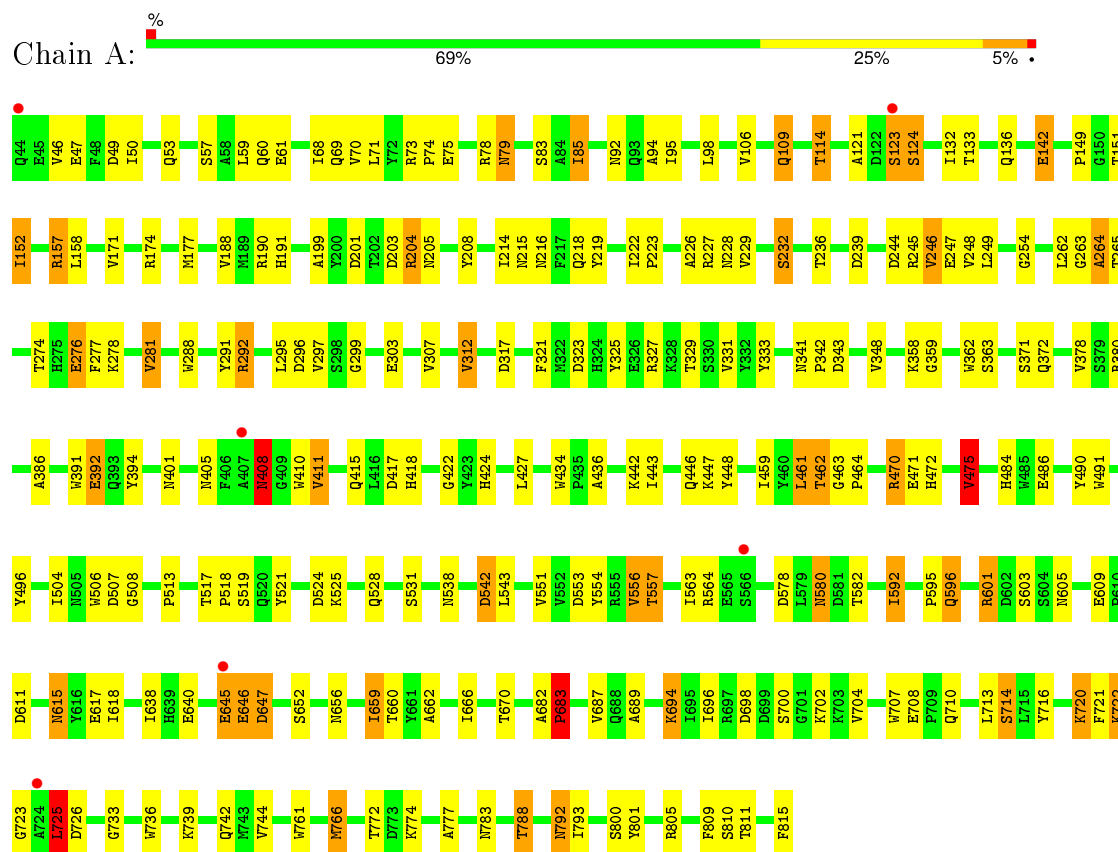
- Molecule 6 is FE (III) ION (three-letter code: FE) (formula: Fe).

Mol	Chain	Residues	Atoms		ZeroOcc	AltConf
6	C	1	Total	Fe	0	0
			1	1		

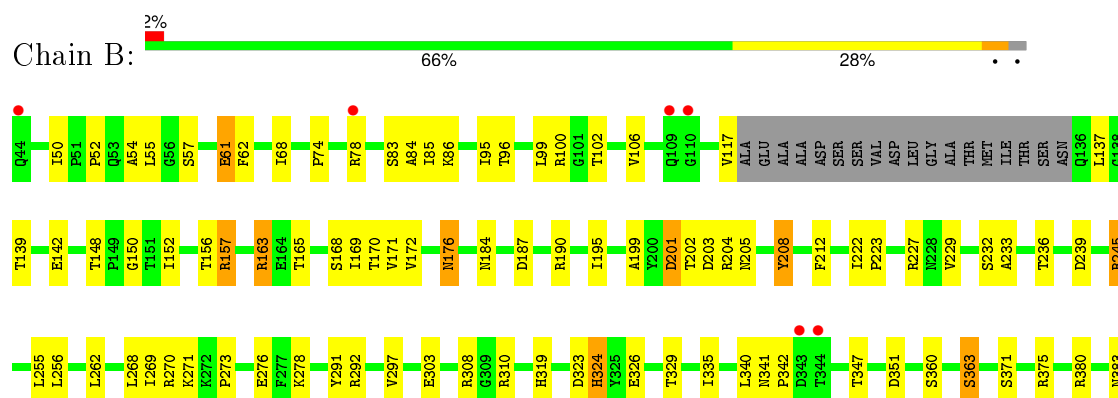
3 Residue-property plots [i](#)

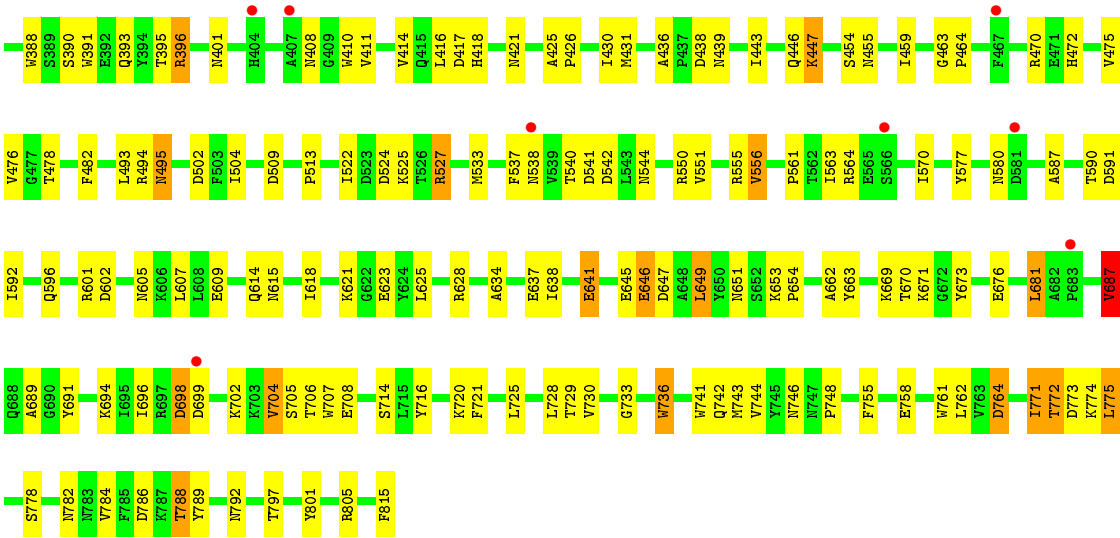
These plots are drawn for all protein, RNA and DNA chains in the entry. The first graphic for a chain summarises the proportions of errors displayed in the second graphic. The second graphic shows the sequence view annotated by issues in geometry and electron density. Residues are color-coded according to the number of geometric quality criteria for which they contain at least one outlier: green = 0, yellow = 1, orange = 2 and red = 3 or more. A red dot above a residue indicates a poor fit to the electron density ($\text{RSRZ} > 2$). Stretches of 2 or more consecutive residues without any outlier are shown as a green connector. Residues present in the sample, but not in the model, are shown in grey.

• Molecule 1: FERRIPYOVERDINE RECEPTOR

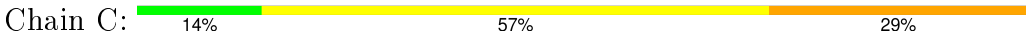


• Molecule 1: FERRIPYOVERDINE RECEPTOR





● Molecule 2: PYOVERDIN R



4 Data and refinement statistics

Property	Value	Source
Space group	C 1 2 1	Depositor
Cell constants a, b, c, α , β , γ	193.42Å 129.93Å 140.88Å 90.00° 130.77° 90.00°	Depositor
Resolution (Å)	97.13 – 2.80 33.44 – 2.80	Depositor EDS
% Data completeness (in resolution range)	89.1 (97.13-2.80) 89.1 (33.44-2.80)	Depositor EDS
R_{merge}	0.09	Depositor
R_{sym}	(Not available)	Depositor
$\langle I/\sigma(I) \rangle$ ¹	1.86 (at 2.81Å)	Xtriage
Refinement program	REFMAC 5.2.0019	Depositor
R, R_{free}	0.215 , 0.265 0.213 , 0.261	Depositor DCC
R_{free} test set	2923 reflections (5.32%)	DCC
Wilson B-factor (Å ²)	40.6	Xtriage
Anisotropy	0.080	Xtriage
Bulk solvent k_{sol} (e/Å ³), B_{sol} (Å ²)	0.39 , 55.3	EDS
Estimated twinning fraction	0.001 for h,-k,-h-l	Xtriage
L-test for twinning ²	$\langle L \rangle = 0.50$, $\langle L^2 \rangle = 0.33$	Xtriage
Outliers	0 of 57915 reflections	Xtriage
F_o, F_c correlation	0.91	EDS
Total number of atoms	12314	wwPDB-VP
Average B, all atoms (Å ²)	31.0	wwPDB-VP

Xtriage's analysis on translational NCS is as follows: *The largest off-origin peak in the Patterson function is 4.00% of the height of the origin peak. No significant pseudotranslation is detected.*

¹Intensities estimated from amplitudes.

²Theoretical values of $\langle |L| \rangle$, $\langle L^2 \rangle$ for acentric reflections are 0.5, 0.375 respectively for untwinned datasets, and 0.333, 0.2 for perfectly twinned datasets.

5 Model quality

5.1 Standard geometry

Bond lengths and bond angles in the following residue types are not validated in this section: DSN, FHO, DAB, PO4, DGN, N8E, PVE, FE

The Z score for a bond length (or angle) is the number of standard deviations the observed value is removed from the expected value. A bond length (or angle) with $|Z| > 5$ is considered an outlier worth inspection. RMSZ is the root-mean-square of all Z scores of the bond lengths (or angles).

Mol	Chain	Bond lengths		Bond angles	
		RMSZ	# Z >5	RMSZ	# Z >5
1	A	0.97	2/6266 (0.0%)	1.02	18/8514 (0.2%)
1	B	0.87	3/6145 (0.0%)	0.92	6/8347 (0.1%)
2	C	0.85	0/12	1.05	0/11
All	All	0.92	5/12423 (0.0%)	0.97	24/16872 (0.1%)

Chiral center outliers are detected by calculating the chiral volume of a chiral center and verifying if the center is modelled as a planar moiety or with the opposite hand. A planarity outlier is detected by checking planarity of atoms in a peptide group, atoms in a mainchain group or atoms of a sidechain that are expected to be planar.

Mol	Chain	#Chirality outliers	#Planarity outliers
1	B	0	1
2	C	1	2
All	All	1	3

All (5) bond length outliers are listed below:

Mol	Chain	Res	Type	Atoms	Z	Observed(Å)	Ideal(Å)
1	A	61	GLU	CG-CD	6.77	1.62	1.51
1	B	758	GLU	CG-CD	5.92	1.60	1.51
1	A	79	ASN	CB-CG	5.22	1.63	1.51
1	B	736	TRP	CB-CG	5.21	1.59	1.50
1	B	645	GLU	CG-CD	5.09	1.59	1.51

The worst 5 of 24 bond angle outliers are listed below:

Mol	Chain	Res	Type	Atoms	Z	Observed(°)	Ideal(°)
1	A	687	VAL	CB-CA-C	-7.78	96.62	111.40
1	A	317	ASP	CB-CG-OD1	7.63	125.17	118.30
1	A	190	ARG	NE-CZ-NH2	-7.00	116.80	120.30

Continued on next page...

Continued from previous page...

Mol	Chain	Res	Type	Atoms	Z	Observed(°)	Ideal(°)
1	A	725	LEU	CA-CB-CG	6.95	131.27	115.30
1	B	190	ARG	NE-CZ-NH1	6.64	123.62	120.30

All (1) chirality outliers are listed below:

Mol	Chain	Res	Type	Atom
2	C	3	DSN	CA

All (3) planarity outliers are listed below:

Mol	Chain	Res	Type	Group
1	B	698	ASP	Peptide
2	C	4	DAB	Mainchain,Peptide

5.2 Too-close contacts [i](#)

In the following table, the Non-H and H(model) columns list the number of non-hydrogen atoms and hydrogen atoms in the chain respectively. The H(added) column lists the number of hydrogen atoms added and optimized by MolProbity. The Clashes column lists the number of clashes within the asymmetric unit, whereas Symm-Clashes lists symmetry related clashes.

Mol	Chain	Non-H	H(model)	H(added)	Clashes	Symm-Clashes
1	A	6114	0	5788	140	0
1	B	5994	0	5675	145	0
2	C	57	0	40	9	0
3	A	72	0	114	6	0
4	A	30	0	0	2	0
4	B	20	0	0	2	0
5	C	26	0	14	0	0
6	C	1	0	0	0	0
All	All	12314	0	11631	287	0

The all-atom clashscore is defined as the number of clashes found per 1000 atoms (including hydrogen atoms). The all-atom clashscore for this structure is 12.

The worst 5 of 287 close contacts within the same asymmetric unit are listed below, sorted by their clash magnitude.

Atom-1	Atom-2	Interatomic distance (Å)	Clash overlap (Å)
1:A:772:THR:HG21	1:B:291:TYR:OH	1.52	1.07
2:C:6:GLN:HG3	2:C:6:GLN:O	1.20	1.01

Continued on next page...

Continued from previous page...

Atom-1	Atom-2	Interatomic distance (Å)	Clash overlap (Å)
2:C:6:GLN:CG	2:C:6:GLN:O	2.11	0.98
1:B:446:GLN:HE22	2:C:6:GLN:HG2	1.31	0.95
1:A:742:GLN:HG3	1:A:793:ILE:O	1.67	0.94

There are no symmetry-related clashes.

5.3 Torsion angles [i](#)

5.3.1 Protein backbone [i](#)

In the following table, the Percentiles column shows the percent Ramachandran outliers of the chain as a percentile score with respect to all X-ray entries followed by that with respect to entries of similar resolution.

The Analysed column shows the number of residues for which the backbone conformation was analysed, and the total number of residues.

Mol	Chain	Analysed	Favoured	Allowed	Outliers	Percentiles	
1	A	770/772 (100%)	714 (93%)	46 (6%)	10 (1%)	15	44
1	B	750/772 (97%)	694 (92%)	48 (6%)	8 (1%)	17	50
2	C	1/7 (14%)	0	1 (100%)	0	100	100
All	All	1521/1551 (98%)	1408 (93%)	95 (6%)	18 (1%)	16	47

5 of 18 Ramachandran outliers are listed below:

Mol	Chain	Res	Type
1	A	124	SER
1	A	227	ARG
1	A	646	GLU
1	B	408	ASN
1	A	603	SER

5.3.2 Protein sidechains [i](#)

In the following table, the Percentiles column shows the percent sidechain outliers of the chain as a percentile score with respect to all X-ray entries followed by that with respect to entries of similar resolution.

The Analysed column shows the number of residues for which the sidechain conformation was analysed, and the total number of residues.

Mol	Chain	Analysed	Rotameric	Outliers	Percentiles	
1	A	650/650 (100%)	575 (88%)	75 (12%)	7	21
1	B	637/650 (98%)	569 (89%)	68 (11%)	8	24
2	C	1/1 (100%)	0	1 (100%)	0	0
All	All	1288/1301 (99%)	1144 (89%)	144 (11%)	7	22

5 of 144 residues with a non-rotameric sidechain are listed below:

Mol	Chain	Res	Type
1	A	714	SER
1	B	86	LYS
1	B	720	LYS
1	A	722	LYS
1	A	810	SER

Some sidechains can be flipped to improve hydrogen bonding and reduce clashes. 5 of 21 such sidechains are listed below:

Mol	Chain	Res	Type
1	A	596	GLN
1	B	176	ASN
1	B	688	GLN
1	A	580	ASN
1	B	710	GLN

5.3.3 RNA ⓘ

There are no RNA molecules in this entry.

5.4 Non-standard residues in protein, DNA, RNA chains ⓘ

5 non-standard protein/DNA/RNA residues are modelled in this entry.

In the following table, the Counts columns list the number of bonds (or angles) for which Mogul statistics could be retrieved, the number of bonds (or angles) that are observed in the model and the number of bonds (or angles) that are defined in the chemical component dictionary. The Link column lists molecule types, if any, to which the group is linked. The Z score for a bond length (or angle) is the number of standard deviations the observed value is removed from the expected value. A bond length (or angle) with $|Z| > 2$ is considered an outlier worth inspection. RMSZ is the root-mean-square of all Z scores of the bond lengths (or angles).

Mol	Type	Chain	Res	Link	Bond lengths			Bond angles		
					Counts	RMSZ	# Z > 2	Counts	RMSZ	# Z > 2
2	DSN	C	3	2,5	3,4,6	3.26	1 (33%)	0,4,7	0.00	-
2	DAB	C	4	2	5,6,7	0.45	0	3,6,8	2.78	1 (33%)
2	FHO	C	5	2,6	7,10,11	0.88	0	6,11,13	1.31	1 (16%)
2	DGN	C	7	2	7,8,9	0.99	0	6,9,11	0.92	1 (16%)
2	FHO	C	8	2,6	7,10,11	0.68	0	6,11,13	1.18	0

In the following table, the Chirals column lists the number of chiral outliers, the number of chiral centers analysed, the number of these observed in the model and the number defined in the chemical component dictionary. Similar counts are reported in the Torsion and Rings columns. '-' means no outliers of that kind were identified.

Mol	Type	Chain	Res	Link	Chirals	Torsions	Rings
2	DSN	C	3	2,5	1/1/1/2	0/0/2/6	0/0/0/0
2	DAB	C	4	2	-	0/3/5/7	0/0/0/0
2	FHO	C	5	2,6	-	0/5/10/12	0/0/0/0
2	DGN	C	7	2	-	0/5/7/9	0/0/0/0
2	FHO	C	8	2,6	-	0/5/10/12	0/0/0/0

All (1) bond length outliers are listed below:

Mol	Chain	Res	Type	Atoms	Z	Observed(Å)	Ideal(Å)
2	C	3	DSN	O-C	5.58	1.45	1.19

All (3) bond angle outliers are listed below:

Mol	Chain	Res	Type	Atoms	Z	Observed(°)	Ideal(°)
2	C	4	DAB	O-C-CA	-4.64	113.40	125.49
2	C	5	FHO	O-C-CA	-2.77	118.28	125.49
2	C	7	DGN	O-C-CA	-2.10	120.01	125.49

All (1) chirality outliers are listed below:

Mol	Chain	Res	Type	Atom
2	C	3	DSN	CA

There are no torsion outliers.

There are no ring outliers.

5 monomers are involved in 4 short contacts:

Mol	Chain	Res	Type	Clashes	Symm-Clashes
2	C	3	DSN	1	0
2	C	4	DAB	2	0
2	C	5	FHO	1	0
2	C	7	DGN	2	0
2	C	8	FHO	1	0

5.5 Carbohydrates [i](#)

There are no carbohydrates in this entry.

5.6 Ligand geometry [i](#)

Of 15 ligands modelled in this entry, 1 is monoatomic - leaving 14 for Mogul analysis.

In the following table, the Counts columns list the number of bonds (or angles) for which Mogul statistics could be retrieved, the number of bonds (or angles) that are observed in the model and the number of bonds (or angles) that are defined in the chemical component dictionary. The Link column lists molecule types, if any, to which the group is linked. The Z score for a bond length (or angle) is the number of standard deviations the observed value is removed from the expected value. A bond length (or angle) with $|Z| > 2$ is considered an outlier worth inspection. RMSZ is the root-mean-square of all Z scores of the bond lengths (or angles).

Mol	Type	Chain	Res	Link	Bond lengths			Bond angles		
					Counts	RMSZ	$\# Z > 2$	Counts	RMSZ	$\# Z > 2$
3	N8E	A	1816	-	23,23,23	0.55	0	22,22,22	0.42	0
3	N8E	A	1817[A]	-	23,23,23	0.72	0	22,22,22	0.78	0
3	N8E	A	1817[B]	-	23,23,23	0.87	0	22,22,22	0.98	1 (4%)
4	PO4	A	1818	-	4,4,4	0.37	0	6,6,6	0.34	0
4	PO4	A	1819	-	4,4,4	0.50	0	6,6,6	0.30	0
4	PO4	A	1820	-	4,4,4	0.75	0	6,6,6	0.29	0
4	PO4	A	1821	-	4,4,4	0.47	0	6,6,6	0.28	0
4	PO4	A	1822	-	4,4,4	0.59	0	6,6,6	0.26	0
4	PO4	A	1823	-	4,4,4	0.62	0	6,6,6	0.29	0
4	PO4	B	1816	-	4,4,4	0.32	0	6,6,6	0.32	0
4	PO4	B	1817	-	4,4,4	0.27	0	6,6,6	0.30	0
4	PO4	B	1818	-	4,4,4	0.51	0	6,6,6	0.30	0
4	PO4	B	1819	-	4,4,4	0.36	0	6,6,6	0.27	0
5	PVE	C	1	2,6	24,28,29	2.05	5 (20%)	24,40,42	1.43	4 (16%)

In the following table, the Chirals column lists the number of chiral outliers, the number of chiral centers analysed, the number of these observed in the model and the number defined in the chemical component dictionary. Similar counts are reported in the Torsion and Rings columns. '-' means no outliers of that kind were identified.

Mol	Type	Chain	Res	Link	Chirals	Torsions	Rings
3	N8E	A	1816	-	-	0/21/21/21	0/0/0/0
3	N8E	A	1817[A]	-	-	0/21/21/21	0/0/0/0
3	N8E	A	1817[B]	-	-	0/21/21/21	0/0/0/0
4	PO4	A	1818	-	-	0/0/0/0	0/0/0/0
4	PO4	A	1819	-	-	0/0/0/0	0/0/0/0
4	PO4	A	1820	-	-	0/0/0/0	0/0/0/0
4	PO4	A	1821	-	-	0/0/0/0	0/0/0/0
4	PO4	A	1822	-	-	0/0/0/0	0/0/0/0
4	PO4	A	1823	-	-	0/0/0/0	0/0/0/0
4	PO4	B	1816	-	-	0/0/0/0	0/0/0/0
4	PO4	B	1817	-	-	0/0/0/0	0/0/0/0
4	PO4	B	1818	-	-	0/0/0/0	0/0/0/0
4	PO4	B	1819	-	-	0/0/0/0	0/0/0/0
5	PVE	C	1	2,6	-	0/7/21/23	0/2/3/3

All (5) bond length outliers are listed below:

Mol	Chain	Res	Type	Atoms	Z	Observed(Å)	Ideal(Å)
5	C	1	PVE	C20-C18	-5.46	1.40	1.51
5	C	1	PVE	C9-N1	-3.13	1.36	1.40
5	C	1	PVE	C8-C7	3.37	1.40	1.37
5	C	1	PVE	C14-C15	3.57	1.54	1.50
5	C	1	PVE	C5-C6	4.84	1.42	1.37

All (5) bond angle outliers are listed below:

Mol	Chain	Res	Type	Atoms	Z	Observed(°)	Ideal(°)
5	C	1	PVE	C21-C20-C18	-3.30	104.93	113.01
5	C	1	PVE	C8-C7-C6	-2.29	118.63	119.97
5	C	1	PVE	C7-C8-C9	2.58	121.75	117.09
3	A	1817[B]	N8E	O18-C19-C20	3.13	124.27	110.36
5	C	1	PVE	C12-C13-C14	3.68	118.08	110.13

There are no chirality outliers.

There are no torsion outliers.

There are no ring outliers.

6 monomers are involved in 10 short contacts:

Mol	Chain	Res	Type	Clashes	Symm-Clashes
3	A	1817[A]	N8E	2	0
3	A	1817[B]	N8E	4	0

Continued on next page...

Continued from previous page...

Mol	Chain	Res	Type	Clashes	Symm-Clashes
4	A	1818	PO4	1	0
4	A	1821	PO4	1	0
4	B	1818	PO4	1	0
4	B	1819	PO4	1	0

5.7 Other polymers [i](#)

There are no such residues in this entry.

5.8 Polymer linkage issues [i](#)

There are no chain breaks in this entry.

6 Fit of model and data [i](#)

6.1 Protein, DNA and RNA chains [i](#)

In the following table, the column labelled ‘#RSRZ> 2’ contains the number (and percentage) of RSRZ outliers, followed by percent RSRZ outliers for the chain as percentile scores relative to all X-ray entries and entries of similar resolution. The OWAB column contains the minimum, median, 95th percentile and maximum values of the occupancy-weighted average B-factor per residue. The column labelled ‘Q< 0.9’ lists the number of (and percentage) of residues with an average occupancy less than 0.9.

Mol	Chain	Analysed	<RSRZ>	#RSRZ>2	OWAB(Å ²)	Q<0.9
1	A	772/772 (100%)	-0.50	6 (0%) 87 81	12, 26, 41, 62	0
1	B	754/772 (97%)	-0.27	14 (1%) 70 59	19, 34, 54, 65	0
2	C	2/7 (28%)	0.09	0 100 100	50, 50, 50, 56	0
All	All	1528/1551 (98%)	-0.39	20 (1%) 79 71	12, 29, 49, 65	0

The worst 5 of 20 RSRZ outliers are listed below:

Mol	Chain	Res	Type	RSRZ
1	B	407	ALA	5.8
1	A	44	GLN	4.6
1	A	123	SER	4.3
1	B	78	ARG	4.0
1	B	44	GLN	3.8

6.2 Non-standard residues in protein, DNA, RNA chains [i](#)

In the following table, the Atoms column lists the number of modelled atoms in the group and the number defined in the chemical component dictionary. LLDF column lists the quality of electron density of the group with respect to its neighbouring residues in protein, DNA or RNA chains. The B-factors column lists the minimum, median, 95th percentile and maximum values of B factors of atoms in the group. The column labelled ‘Q< 0.9’ lists the number of atoms with occupancy less than 0.9.

Mol	Type	Chain	Res	Atoms	RSCC	RSR	LLDF	B-factors(Å ²)	Q<0.9
2	FHO	C	5	11/12	0.98	0.13	-	47,50,55,56	0
2	DAB	C	4	7/8	0.91	0.17	-	56,57,58,58	0
2	DSN	C	3	5/7	0.90	0.19	-	57,57,58,58	0
2	DGN	C	7	9/10	0.84	0.20	-	49,53,54,54	0
2	FHO	C	8	11/12	0.95	0.16	-	41,44,50,52	0

6.3 Carbohydrates ⓘ

There are no carbohydrates in this entry.

6.4 Ligands ⓘ

In the following table, the Atoms column lists the number of modelled atoms in the group and the number defined in the chemical component dictionary. LLDF column lists the quality of electron density of the group with respect to its neighbouring residues in protein, DNA or RNA chains. The B-factors column lists the minimum, median, 95th percentile and maximum values of B factors of atoms in the group. The column labelled 'Q< 0.9' lists the number of atoms with occupancy less than 0.9.

Mol	Type	Chain	Res	Atoms	RSCC	RSR	LLDF	B-factors(Å ²)	Q<0.9
3	N8E	A	1816	24/24	0.87	0.29	7.62	47,57,75,76	0
3	N8E	A	1817[A]	24/24	0.87	0.26	5.69	2,6,16,17	24
4	PO4	A	1823	5/5	0.94	0.20	3.51	54,55,55,56	0
4	PO4	B	1816	5/5	0.96	0.27	2.70	58,58,58,59	0
4	PO4	A	1822	5/5	0.97	0.14	1.56	57,59,60,61	0
3	N8E	A	1817[B]	24/24	0.87	0.26	1.54	2,7,12,13	24
4	PO4	A	1818	5/5	0.99	0.15	-0.43	33,34,34,34	0
5	PVE	C	1	26/27	0.94	0.14	-0.51	44,48,60,63	5
4	PO4	B	1818	5/5	0.97	0.12	-0.63	50,51,54,54	0
4	PO4	A	1820	5/5	0.99	0.09	-2.59	36,38,39,39	0
4	PO4	B	1817	5/5	0.98	0.10	-2.73	27,27,29,29	0
4	PO4	A	1819	5/5	0.98	0.08	-4.46	24,25,29,30	0
6	FE	C	2	1/1	0.99	0.06	-	44,44,44,44	0
4	PO4	B	1819	5/5	0.97	0.22	-	46,46,50,51	0
4	PO4	A	1821	5/5	0.96	0.24	-	53,53,53,55	0

6.5 Other polymers ⓘ

There are no such residues in this entry.