



Full wwPDB X-ray Structure Validation Report ⓘ

Jan 31, 2016 – 11:03 PM GMT

PDB ID : 1WA5
Title : CRYSTAL STRUCTURE OF THE EXPORTIN CSE1P COMPLEXED
WITH ITS CARGO (KAP60P) AND RANGTP
Authors : Matsuura, Y.; Stewart, M.
Deposited on : 2004-10-23
Resolution : 2.00 Å(reported)

This is a Full wwPDB X-ray Structure Validation Report for a publicly released PDB entry.
We welcome your comments at validation@mail.wwpdb.org
A user guide is available at
<http://wwpdb.org/validation/2016/XrayValidationReportHelp>
with specific help available everywhere you see the ⓘ symbol.

The following versions of software and data (see [references ⓘ](#)) were used in the production of this report:

MolProbity : 4.02b-467
Mogul : 1.7 (RC4), CSD as536be (2015)
Xtriage (Phenix) : 1.9-1692
EDS : rb-20026688
Percentile statistics : 20151230.v01 (using entries in the PDB archive December 30th 2015)
Refmac : 5.8.0135
CCP4 : 6.5.0
Ideal geometry (proteins) : Engh & Huber (2001)
Ideal geometry (DNA, RNA) : Parkinson et al. (1996)
Validation Pipeline (wwPDB-VP) : trunk26865

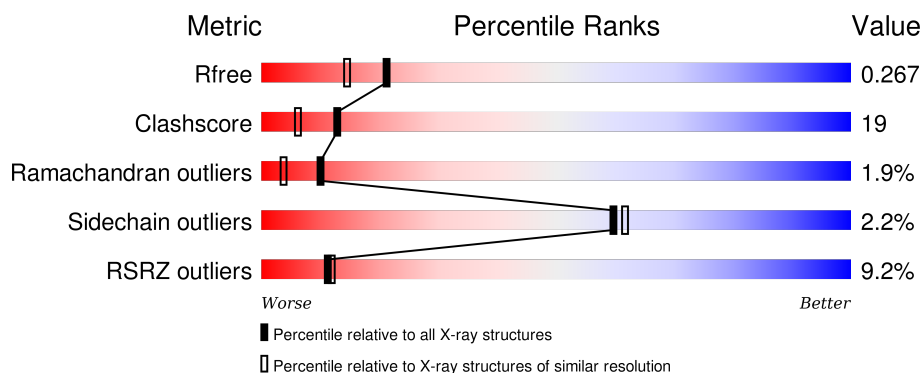
1 Overall quality at a glance

The following experimental techniques were used to determine the structure:

X-RAY DIFFRACTION

The reported resolution of this entry is 2.00 Å.

Percentile scores (ranging between 0-100) for global validation metrics of the entry are shown in the following graphic. The table shows the number of entries on which the scores are based.



Metric	Whole archive (#Entries)	Similar resolution (#Entries, resolution range(Å))
R_{free}	91344	6249 (2.00-2.00)
Clashscore	102246	7340 (2.00-2.00)
Ramachandran outliers	100387	7248 (2.00-2.00)
Sidechain outliers	100360	7247 (2.00-2.00)
RSRZ outliers	91569	6262 (2.00-2.00)

The table below summarises the geometric issues observed across the polymeric chains and their fit to the electron density. The red, orange, yellow and green segments on the lower bar indicate the fraction of residues that contain outliers for ≥ 3 , 2, 1 and 0 types of geometric quality criteria. A grey segment represents the fraction of residues that are not modelled. The numeric value for each fraction is indicated below the corresponding segment, with a dot representing fractions $\leq 5\%$. The upper red bar (where present) indicates the fraction of residues that have poor fit to the electron density. The numeric value is given above the bar.

Mol	Chain	Length	Quality of chain
1	A	176	<div> <div>4%</div> <div>73% 22% . .</div> </div>
2	B	530	<div> <div>12%</div> <div>58% 28% . 12%</div> </div>
3	C	960	<div> <div>8%</div> <div>68% 27% . . .</div> </div>

2 Entry composition [i](#)

There are 6 unique types of molecules in this entry. The entry contains 13079 atoms, of which 0 are hydrogens and 0 are deuteriums.

In the tables below, the ZeroOcc column contains the number of atoms modelled with zero occupancy, the AltConf column contains the number of residues with at least one atom in alternate conformation and the Trace column contains the number of residues modelled with at most 2 atoms.

- Molecule 1 is a protein called GTP-BINDING NUCLEAR PROTEIN RAN.

Mol	Chain	Residues	Atoms					ZeroOcc	AltConf	Trace
1	A	170	Total	C	N	O	S	0	0	0
			1387	900	244	239	4			

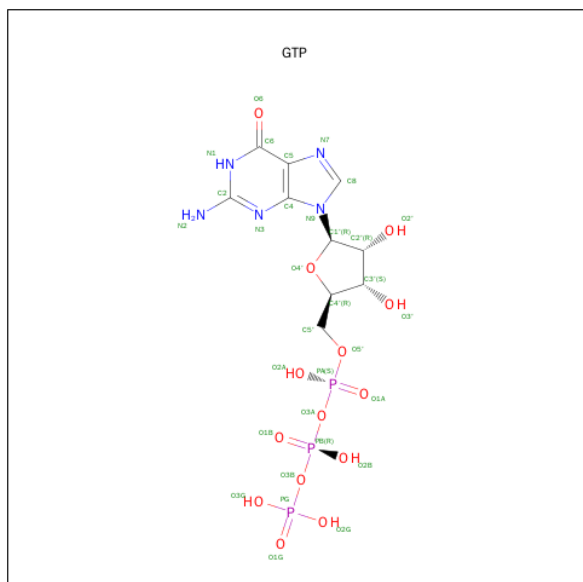
- Molecule 2 is a protein called IMPORTIN ALPHA SUBUNIT.

Mol	Chain	Residues	Atoms					ZeroOcc	AltConf	Trace
2	B	464	Total	C	N	O	S	2	0	1
			3644	2294	633	701	16			

- Molecule 3 is a protein called IMPORTIN ALPHA RE-EXPORTER.

Mol	Chain	Residues	Atoms					ZeroOcc	AltConf	Trace
3	C	938	Total	C	N	O	S	0	0	1
			7543	4899	1224	1401	19			

- Molecule 4 is GUANOSINE-5'-TRIPHOSPHATE (three-letter code: GTP) (formula: $C_{10}H_{16}N_5O_{14}P_3$).



Mol	Chain	Residues	Atoms					ZeroOcc	AltConf
4	A	1	Total	C	N	O	P	0	0
			32	10	5	14	3		

- Molecule 5 is MAGNESIUM ION (three-letter code: MG) (formula: Mg).

Mol	Chain	Residues	Atoms		ZeroOcc	AltConf
5	A	1	Total	Mg	0	0
			1	1		

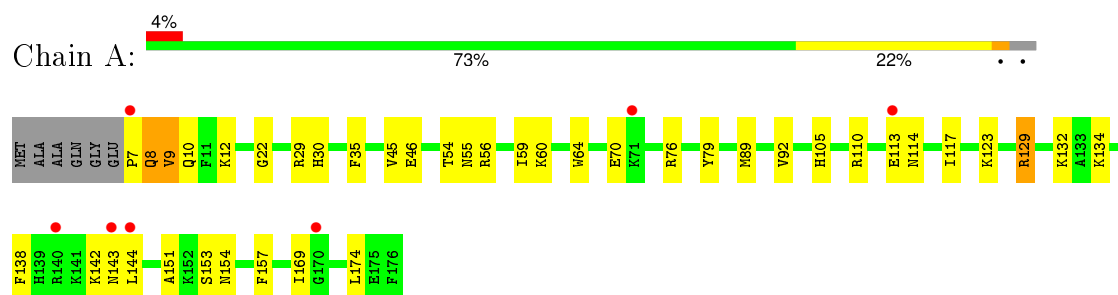
- Molecule 6 is water.

Mol	Chain	Residues	Atoms		ZeroOcc	AltConf
6	A	68	Total	O	0	0
			68	68		
6	B	106	Total	O	0	0
			106	106		
6	C	298	Total	O	0	0
			298	298		

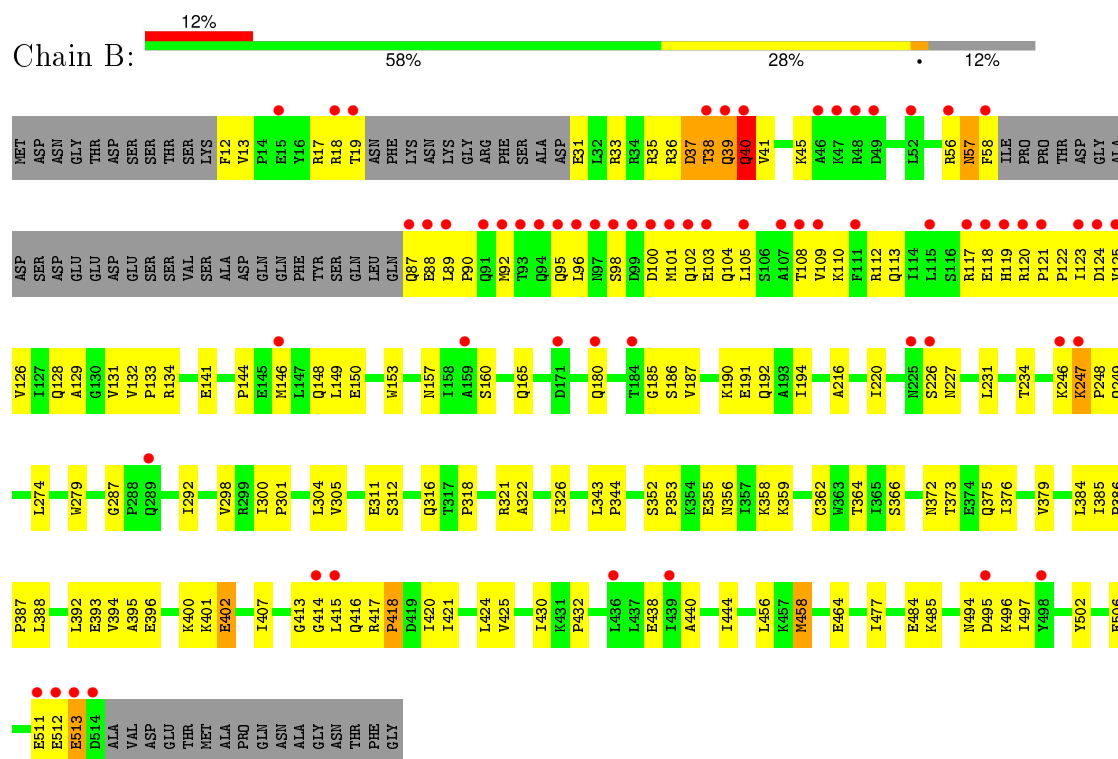
3 Residue-property plots

These plots are drawn for all protein, RNA and DNA chains in the entry. The first graphic for a chain summarises the proportions of errors displayed in the second graphic. The second graphic shows the sequence view annotated by issues in geometry and electron density. Residues are color-coded according to the number of geometric quality criteria for which they contain at least one outlier: green = 0, yellow = 1, orange = 2 and red = 3 or more. A red dot above a residue indicates a poor fit to the electron density ($RSRZ > 2$). Stretches of 2 or more consecutive residues without any outlier are shown as a green connector. Residues present in the sample, but not in the model, are shown in grey.

• Molecule 1: GTP-BINDING NUCLEAR PROTEIN RAN

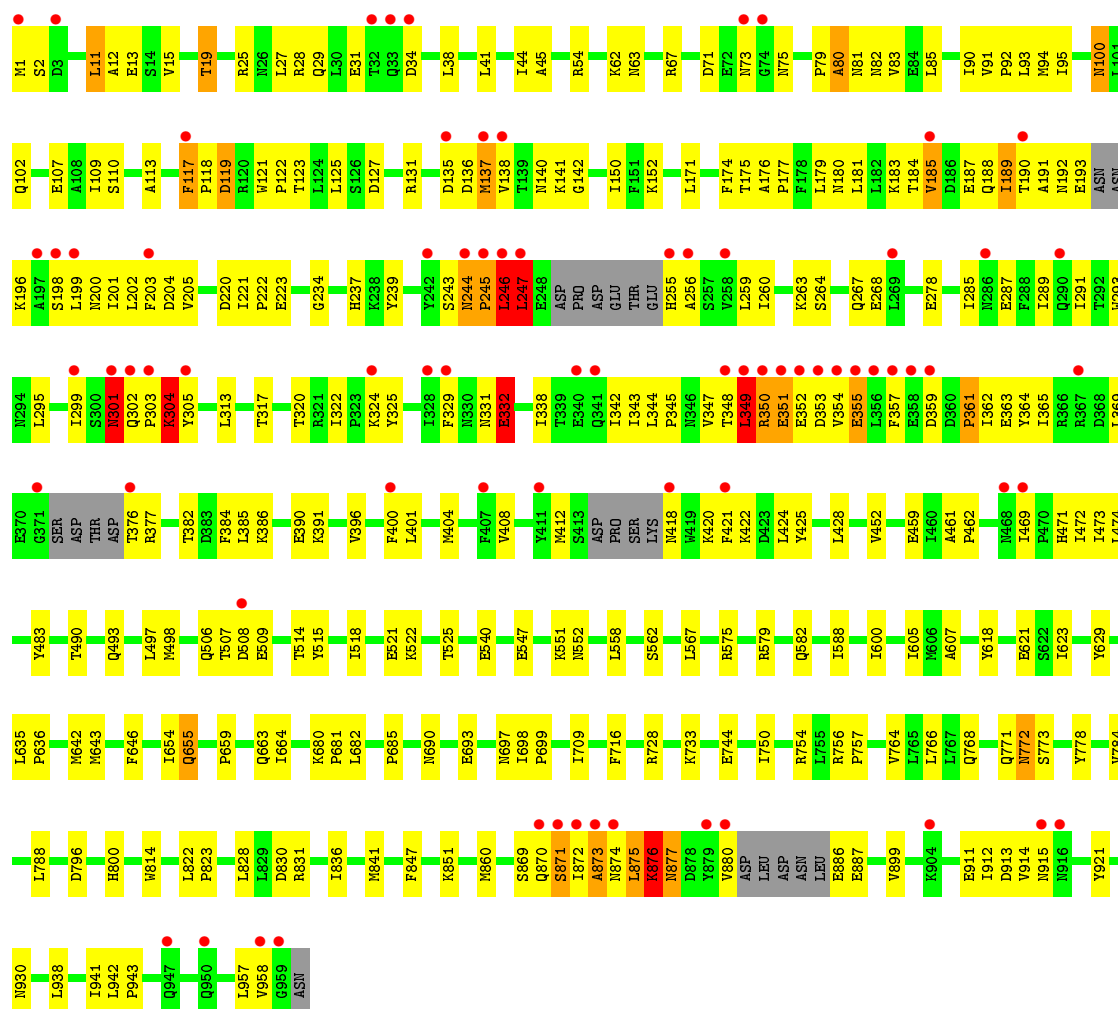


• Molecule 2: IMPORTIN ALPHA SUBUNIT



• Molecule 3: IMPORTIN ALPHA RE-EXPORTER





4 Data and refinement statistics

Property	Value	Source
Space group	C 1 2 1	Depositor
Cell constants a, b, c, α , β , γ	272.67Å 72.26Å 97.64Å 90.00° 92.57° 90.00°	Depositor
Resolution (Å)	200.00 – 2.00 34.92 – 2.00	Depositor EDS
% Data completeness (in resolution range)	93.9 (200.00-2.00) 93.9 (34.92-2.00)	Depositor EDS
R_{merge}	0.09	Depositor
R_{sym}	(Not available)	Depositor
$\langle I/\sigma(I) \rangle$ ¹	1.84 (at 2.00Å)	Xtriage
Refinement program	CNS 1.1	Depositor
R, R_{free}	0.234 , 0.268 0.233 , 0.267	Depositor DCC
R_{free} test set	6088 reflections (5.32%)	DCC
Wilson B-factor (Å ²)	33.2	Xtriage
Anisotropy	0.140	Xtriage
Bulk solvent k_{sol} (e/Å ³), B_{sol} (Å ²)	0.35 , 48.5	EDS
Estimated twinning fraction	0.014 for -h,-k,l	Xtriage
L-test for twinning ²	$\langle L \rangle = 0.49$, $\langle L^2 \rangle = 0.32$	Xtriage
Outliers	0 of 144336 reflections	Xtriage
F_o, F_c correlation	0.94	EDS
Total number of atoms	13079	wwPDB-VP
Average B, all atoms (Å ²)	42.0	wwPDB-VP

Xtriage's analysis on translational NCS is as follows: *The largest off-origin peak in the Patterson function is 3.63% of the height of the origin peak. No significant pseudotranslation is detected.*

¹Intensities estimated from amplitudes.

²Theoretical values of $\langle |L| \rangle$, $\langle L^2 \rangle$ for acentric reflections are 0.5, 0.375 respectively for untwinned datasets, and 0.333, 0.2 for perfectly twinned datasets.

5 Model quality ⓘ

5.1 Standard geometry ⓘ

Bond lengths and bond angles in the following residue types are not validated in this section: GTP, MG

The Z score for a bond length (or angle) is the number of standard deviations the observed value is removed from the expected value. A bond length (or angle) with $|Z| > 5$ is considered an outlier worth inspection. RMSZ is the root-mean-square of all Z scores of the bond lengths (or angles).

Mol	Chain	Bond lengths		Bond angles	
		RMSZ	# Z >5	RMSZ	# Z >5
1	A	0.50	0/1422	0.71	0/1918
2	B	0.37	0/3698	0.61	3/5016 (0.1%)
3	C	0.41	0/7693	0.64	6/10449 (0.1%)
All	All	0.41	0/12813	0.64	9/17383 (0.1%)

There are no bond length outliers.

All (9) bond angle outliers are listed below:

Mol	Chain	Res	Type	Atoms	Z	Observed(°)	Ideal(°)
3	C	349	LEU	CB-CG-CD1	-6.47	99.99	111.00
2	B	41	VAL	N-CA-C	-6.04	94.68	111.00
3	C	304	LYS	N-CA-C	-5.96	94.91	111.00
2	B	38	THR	N-CA-C	-5.87	95.15	111.00
3	C	349	LEU	N-CA-C	5.84	126.77	111.00
3	C	871	SER	N-CA-C	-5.80	95.34	111.00
3	C	246	LEU	CA-CB-CG	-5.78	102.00	115.30
3	C	247	LEU	N-CA-C	5.12	124.84	111.00
2	B	40	GLN	N-CA-C	5.08	124.72	111.00

There are no chirality outliers.

There are no planarity outliers.

5.2 Too-close contacts ⓘ

In the following table, the Non-H and H(model) columns list the number of non-hydrogen atoms and hydrogen atoms in the chain respectively. The H(added) column lists the number of hydrogen atoms added and optimized by MolProbity. The Clashes column lists the number of clashes within the asymmetric unit, whereas Symm-Clashes lists symmetry related clashes.

Mol	Chain	Non-H	H(model)	H(added)	Clashes	Symm-Clashes
1	A	1387	0	1407	44	0
2	B	3644	0	3699	141	0
3	C	7543	0	7694	315	0
4	A	32	0	12	1	0
5	A	1	0	0	0	0
6	A	68	0	0	4	0
6	B	106	0	0	6	0
6	C	298	0	0	20	0
All	All	13079	0	12812	487	0

The all-atom clashscore is defined as the number of clashes found per 1000 atoms (including hydrogen atoms). The all-atom clashscore for this structure is 19.

All (487) close contacts within the same asymmetric unit are listed below, sorted by their clash magnitude.

Atom-1	Atom-2	Interatomic distance (Å)	Clash overlap (Å)
3:C:828:LEU:HB3	3:C:914:VAL:HG11	1.32	1.08
3:C:872:ILE:HD12	3:C:872:ILE:H	1.23	1.03
2:B:56:ARG:HH12	2:B:123:ILE:HD11	1.32	0.94
1:A:92:VAL:CG1	1:A:129:ARG:HG2	1.99	0.91
2:B:17:ARG:HH22	3:C:117:PHE:HB3	1.36	0.88
3:C:117:PHE:CG	3:C:118:PRO:HD3	2.09	0.88
3:C:828:LEU:HB3	3:C:914:VAL:CG1	2.04	0.87
2:B:438:GLU:OE2	2:B:485:LYS:HE2	1.75	0.87
3:C:870:GLN:HA	3:C:873:ALA:HB2	1.55	0.87
2:B:421:ILE:HG21	2:B:458:MET:HG2	1.56	0.87
3:C:127:ASP:O	3:C:131:ARG:HG2	1.73	0.86
3:C:471:HIS:HD2	3:C:473:ILE:H	1.20	0.85
3:C:607:ALA:HB1	3:C:654:ILE:HD13	1.58	0.85
3:C:12:ALA:O	3:C:15:VAL:HG12	1.77	0.85
3:C:349:LEU:HD21	3:C:420:LYS:HB3	1.57	0.84
3:C:351:GLU:O	3:C:354:VAL:HB	1.77	0.84
3:C:354:VAL:O	3:C:357:PHE:HB3	1.77	0.84
3:C:185:VAL:O	3:C:189:ILE:HG13	1.77	0.84
1:A:29:ARG:HG2	1:A:157:PHE:CE2	2.13	0.83
2:B:494:ASN:HD22	2:B:497:ILE:H	1.27	0.82
3:C:188:GLN:C	3:C:190:THR:H	1.81	0.82
3:C:558:LEU:HD23	3:C:567:LEU:HD11	1.61	0.81
3:C:422:LYS:HA	3:C:425:TYR:CE1	2.15	0.80
3:C:352:GLU:O	3:C:355:GLU:HG3	1.81	0.80
3:C:507:THR:HG22	3:C:509:GLU:H	1.45	0.79
2:B:17:ARG:NH2	3:C:118:PRO:HD2	1.97	0.79

Continued on next page...

Continued from previous page...

Atom-1	Atom-2	Interatomic distance (Å)	Clash overlap (Å)
3:C:13:GLU:HB3	3:C:19:THR:HG21	1.65	0.79
2:B:149:LEU:HD12	2:B:192:GLN:HG3	1.65	0.79
3:C:138:VAL:O	3:C:141:LYS:HG2	1.82	0.79
3:C:237:HIS:NE2	3:C:291:ILE:HD11	1.98	0.79
2:B:36:ARG:NH2	2:B:321:ARG:HD3	2.00	0.77
2:B:440:ALA:HB1	2:B:444:ILE:HB	1.67	0.76
3:C:828:LEU:CB	3:C:914:VAL:HG11	2.15	0.76
3:C:872:ILE:HD12	3:C:872:ILE:N	2.00	0.76
3:C:376:THR:HG22	3:C:377:ARG:H	1.51	0.75
3:C:117:PHE:HZ	3:C:125:LEU:HD21	1.51	0.75
3:C:872:ILE:H	3:C:872:ILE:CD1	1.97	0.75
3:C:255:HIS:O	3:C:304:LYS:HB2	1.86	0.75
3:C:285:ILE:O	3:C:289:ILE:HG12	1.87	0.75
2:B:300:ILE:N	2:B:301:PRO:HD2	2.02	0.75
3:C:412:MET:HG2	6:C:2094:HOH:O	1.87	0.75
2:B:343:LEU:HB2	2:B:344:PRO:HD3	1.69	0.74
3:C:278:GLU:HG2	6:C:2082:HOH:O	1.87	0.74
3:C:348:THR:HG22	3:C:349:LEU:H	1.53	0.74
1:A:7:PRO:O	1:A:8:GLN:HB2	1.89	0.73
1:A:8:GLN:O	1:A:9:VAL:HG23	1.87	0.73
3:C:575:ARG:HG2	3:C:618:TYR:CD1	2.24	0.73
2:B:191:GLU:HG2	2:B:231:LEU:HD13	1.69	0.73
2:B:141:GLU:HB2	2:B:180:GLN:HE22	1.54	0.73
3:C:525:THR:HG22	3:C:579:ARG:HD3	1.68	0.73
3:C:655:GLN:HE22	3:C:697:ASN:HD21	1.36	0.72
2:B:414:GLY:HA3	2:B:421:ILE:HG13	1.72	0.72
2:B:19:THR:HG21	2:B:495:ASP:HB3	1.71	0.72
3:C:44:ILE:O	3:C:54:ARG:NH1	2.23	0.72
3:C:117:PHE:CD2	3:C:118:PRO:HD3	2.26	0.71
3:C:472:ILE:HD12	3:C:473:ILE:N	2.06	0.71
3:C:135:ASP:CG	3:C:136:ASP:H	1.95	0.70
3:C:180:ASN:HB3	6:C:2047:HOH:O	1.90	0.70
1:A:92:VAL:HG12	1:A:129:ARG:HG2	1.70	0.70
2:B:141:GLU:HB2	2:B:180:GLN:NE2	2.06	0.70
2:B:109:VAL:O	2:B:113:GLN:HG3	1.91	0.70
3:C:490:THR:OG1	3:C:493:GLN:HG3	1.92	0.69
3:C:304:LYS:HE2	3:C:305:TYR:CZ	2.28	0.69
2:B:104:GLN:HE21	2:B:134:ARG:NH2	1.92	0.68
3:C:287:GLU:HG3	6:C:2083:HOH:O	1.94	0.67
2:B:187:VAL:O	2:B:191:GLU:HG3	1.95	0.67
3:C:176:ALA:HB3	3:C:177:PRO:HD3	1.77	0.67

Continued on next page...

Continued from previous page...

Atom-1	Atom-2	Interatomic distance (Å)	Clash overlap (Å)
3:C:506:GLN:HE21	3:C:552:ASN:HD21	1.43	0.66
3:C:91:VAL:HB	3:C:92:PRO:HD3	1.77	0.66
3:C:237:HIS:CE1	3:C:291:ILE:HD11	2.30	0.66
3:C:302:GLN:O	3:C:305:TYR:HD1	1.78	0.66
3:C:401:LEU:HA	3:C:404:MET:HE3	1.77	0.66
3:C:355:GLU:O	3:C:359:ASP:HB2	1.97	0.65
3:C:507:THR:CG2	3:C:508:ASP:N	2.59	0.65
3:C:188:GLN:C	3:C:190:THR:N	2.49	0.65
2:B:392:LEU:HD22	2:B:407:ILE:HD12	1.78	0.65
3:C:267:GLN:HA	3:C:267:GLN:OE1	1.96	0.65
3:C:938:LEU:HD13	3:C:957:LEU:HD13	1.77	0.65
3:C:117:PHE:O	3:C:118:PRO:C	2.35	0.65
3:C:121:TRP:N	3:C:122:PRO:HD3	2.11	0.65
2:B:246:LYS:O	2:B:249:GLN:HG2	1.97	0.64
3:C:376:THR:HG22	3:C:377:ARG:N	2.12	0.64
2:B:157:ASN:O	2:B:160:SER:HB3	1.97	0.64
2:B:119:HIS:ND1	2:B:120:ARG:HG2	2.13	0.64
2:B:92:MET:HG2	2:B:110:LYS:HE2	1.80	0.64
3:C:386:LYS:O	3:C:390:GLU:HG2	1.98	0.64
3:C:915:ASN:HA	6:C:2289:HOH:O	1.99	0.63
3:C:471:HIS:CD2	3:C:473:ILE:HG12	2.33	0.63
1:A:29:ARG:HG2	1:A:157:PHE:CZ	2.34	0.63
3:C:422:LYS:HG2	3:C:474:LEU:HD22	1.79	0.63
2:B:56:ARG:NH1	2:B:123:ILE:HD11	2.10	0.63
3:C:313:LEU:O	3:C:317:THR:HG23	1.99	0.62
3:C:507:THR:HG22	3:C:508:ASP:N	2.13	0.62
3:C:246:LEU:HD12	3:C:259:LEU:HD22	1.81	0.62
2:B:56:ARG:HB3	2:B:58:PHE:CE1	2.35	0.62
2:B:226:SER:OG	2:B:231:LEU:HD23	2.00	0.62
3:C:814:TRP:CH2	3:C:841:MET:HG3	2.34	0.62
1:A:132:LYS:HE3	2:B:511:GLU:OE2	1.99	0.62
3:C:400:PHE:O	3:C:404:MET:HG3	2.00	0.61
3:C:189:ILE:HG22	3:C:189:ILE:O	2.01	0.61
2:B:100:ASP:OD2	2:B:102:GLN:HB3	2.01	0.61
2:B:100:ASP:O	2:B:104:GLN:HG3	1.99	0.61
2:B:123:ILE:HB	2:B:165:GLN:NE2	2.14	0.61
3:C:95:ILE:HD11	3:C:131:ARG:HG3	1.81	0.61
3:C:118:PRO:O	3:C:119:ASP:HB2	1.99	0.61
3:C:635:LEU:N	3:C:636:PRO:HD2	2.16	0.61
3:C:408:VAL:O	3:C:412:MET:HG3	2.01	0.61
2:B:421:ILE:CG2	2:B:458:MET:HG2	2.31	0.61

Continued on next page...

Continued from previous page...

Atom-1	Atom-2	Interatomic distance (Å)	Clash overlap (Å)
2:B:101:MET:HA	2:B:104:GLN:CG	2.31	0.60
2:B:35:ARG:NH2	2:B:287:GLY:HA2	2.16	0.60
3:C:461:ALA:HB3	3:C:462:PRO:HD3	1.83	0.60
3:C:320:THR:HG22	3:C:391:LYS:HG3	1.82	0.60
3:C:756:ARG:HB3	3:C:757:PRO:HD3	1.84	0.60
3:C:914:VAL:HG13	6:C:2261:HOH:O	2.01	0.60
1:A:12:LYS:HE2	1:A:64:TRP:CE2	2.36	0.60
1:A:22:GLY:C	1:A:89:MET:HE1	2.21	0.60
2:B:89:LEU:HB3	2:B:90:PRO:HD3	1.82	0.60
3:C:744:GLU:HG2	3:C:788:LEU:HD23	1.83	0.60
2:B:19:THR:HG21	2:B:496:LYS:H	1.67	0.59
1:A:134:LYS:NZ	2:B:484:GLU:OE1	2.36	0.59
3:C:880:VAL:HG12	3:C:880:VAL:O	2.02	0.59
3:C:198:SER:O	3:C:202:LEU:HG	2.03	0.59
3:C:913:ASP:OD2	3:C:915:ASN:HB2	2.03	0.59
3:C:349:LEU:CD2	3:C:420:LYS:HB3	2.32	0.58
3:C:13:GLU:HB3	3:C:19:THR:CG2	2.33	0.58
3:C:71:ASP:OD2	3:C:75:ASN:HB2	2.03	0.58
3:C:558:LEU:HD23	3:C:567:LEU:CD1	2.33	0.58
1:A:70:GLU:OE2	1:A:76:ARG:NH2	2.36	0.58
3:C:642:MET:HE2	3:C:646:PHE:CZ	2.39	0.58
2:B:132:VAL:HB	2:B:133:PRO:HD3	1.85	0.58
3:C:13:GLU:OE1	3:C:19:THR:HG21	2.04	0.58
3:C:304:LYS:HE2	3:C:305:TYR:CE1	2.38	0.58
2:B:359:LYS:HB3	2:B:359:LYS:NZ	2.19	0.58
3:C:483:TYR:CE1	3:C:522:LYS:HG3	2.38	0.58
3:C:483:TYR:HE1	3:C:522:LYS:HG3	1.69	0.58
2:B:185:GLY:O	2:B:190:LYS:HE3	2.02	0.58
2:B:122:PRO:O	2:B:125:VAL:HG12	2.04	0.57
3:C:220:ASP:O	3:C:222:PRO:HD3	2.04	0.57
2:B:17:ARG:HH22	3:C:118:PRO:HD2	1.68	0.57
3:C:498:MET:HA	3:C:498:MET:CE	2.34	0.57
2:B:31:GLU:HG3	2:B:33:ARG:H	1.68	0.57
2:B:19:THR:HG22	2:B:496:LYS:HG3	1.85	0.57
3:C:643:MET:HE1	3:C:646:PHE:HD1	1.69	0.57
3:C:92:PRO:HG3	3:C:131:ARG:NH2	2.20	0.57
3:C:369:LEU:HD11	3:C:518:ILE:HD13	1.86	0.57
3:C:1:MET:O	3:C:2:SER:HB3	2.04	0.57
2:B:117:ARG:HB2	6:B:2010:HOH:O	2.04	0.56
2:B:12:PHE:CD1	3:C:73:ASN:HA	2.40	0.56
3:C:338:ILE:HG23	3:C:342:ILE:HD12	1.87	0.56

Continued on next page...

Continued from previous page...

Atom-1	Atom-2	Interatomic distance (Å)	Clash overlap (Å)
3:C:472:ILE:C	3:C:472:ILE:HD12	2.25	0.56
2:B:494:ASN:ND2	2:B:497:ILE:HG13	2.20	0.56
2:B:104:GLN:NE2	2:B:134:ARG:NH2	2.54	0.56
2:B:418:PRO:HB3	2:B:458:MET:CE	2.35	0.56
3:C:244:ASN:HB3	3:C:245:PRO:HD2	1.88	0.56
2:B:384:LEU:O	2:B:387:PRO:HG2	2.05	0.56
3:C:362:ILE:HG22	6:C:2089:HOH:O	2.05	0.56
2:B:292:ILE:HG23	2:B:326:ILE:HG23	1.88	0.56
3:C:295:LEU:HG	3:C:299:ILE:HD12	1.88	0.55
2:B:372:ASN:OD1	2:B:375:GLN:HG3	2.06	0.55
3:C:90:ILE:HG12	3:C:109:ILE:HG12	1.88	0.55
2:B:96:LEU:HD23	2:B:131:VAL:HB	1.88	0.55
3:C:507:THR:HG22	3:C:509:GLU:N	2.19	0.55
1:A:7:PRO:HB3	1:A:60:LYS:HE3	1.88	0.55
3:C:870:GLN:CA	3:C:873:ALA:HB2	2.33	0.55
2:B:420:ILE:O	2:B:424:LEU:HG	2.06	0.55
3:C:623:ILE:CG2	3:C:642:MET:HE3	2.36	0.55
3:C:766:LEU:O	3:C:778:TYR:OH	2.24	0.55
3:C:117:PHE:HB3	3:C:118:PRO:CD	2.37	0.55
3:C:199:LEU:O	3:C:203:PHE:HD1	1.89	0.55
3:C:28:ARG:O	3:C:31:GLU:HB3	2.07	0.54
3:C:80:ALA:HA	3:C:83:VAL:HB	1.89	0.54
3:C:295:LEU:HG	3:C:299:ILE:CD1	2.38	0.54
3:C:525:THR:CG2	3:C:579:ARG:HD3	2.38	0.54
3:C:655:GLN:NE2	3:C:697:ASN:HD21	2.05	0.54
3:C:117:PHE:CG	3:C:118:PRO:CD	2.88	0.54
2:B:494:ASN:ND2	2:B:497:ILE:H	2.01	0.54
2:B:226:SER:CB	2:B:231:LEU:HD23	2.37	0.54
3:C:869:SER:HB3	6:C:2297:HOH:O	2.06	0.54
1:A:29:ARG:HD2	1:A:151:ALA:O	2.08	0.54
3:C:348:THR:HG22	3:C:349:LEU:HG	1.89	0.54
1:A:143:ASN:ND2	3:C:255:HIS:HA	2.23	0.54
3:C:362:ILE:HG23	3:C:363:GLU:N	2.23	0.54
3:C:831:ARG:HE	3:C:870:GLN:HG2	1.71	0.54
3:C:63:ASN:O	3:C:67:ARG:HG3	2.08	0.54
2:B:425:VAL:HG13	2:B:430:ILE:HD12	1.91	0.53
3:C:188:GLN:HA	3:C:190:THR:HG22	1.89	0.53
3:C:303:PRO:O	3:C:304:LYS:HB3	2.08	0.53
1:A:7:PRO:O	1:A:8:GLN:CB	2.57	0.53
2:B:39:GLN:HG2	2:B:39:GLN:O	2.04	0.53
3:C:404:MET:O	3:C:408:VAL:HG23	2.07	0.53

Continued on next page...

Continued from previous page...

Atom-1	Atom-2	Interatomic distance (Å)	Clash overlap (Å)
2:B:117:ARG:HG3	2:B:117:ARG:HH21	1.73	0.53
3:C:600:ILE:HD11	3:C:642:MET:HG2	1.90	0.53
3:C:876:LYS:O	3:C:877:ASN:HB2	2.09	0.53
2:B:186:SER:O	2:B:190:LYS:HG3	2.09	0.53
3:C:117:PHE:CB	3:C:118:PRO:CD	2.87	0.53
2:B:464:GLU:HG2	6:B:2086:HOH:O	2.09	0.53
3:C:452:VAL:HG22	6:C:2105:HOH:O	2.08	0.53
1:A:129:ARG:HD2	6:A:2053:HOH:O	2.08	0.53
2:B:19:THR:CG2	2:B:496:LYS:H	2.22	0.52
2:B:96:LEU:CD2	2:B:131:VAL:HB	2.38	0.52
2:B:57:ASN:HD22	2:B:58:PHE:N	2.07	0.52
3:C:831:ARG:HE	3:C:870:GLN:CG	2.23	0.52
2:B:108:THR:HG22	2:B:150:GLU:HB3	1.92	0.52
1:A:29:ARG:NH2	1:A:35:PHE:HB2	2.24	0.52
3:C:317:THR:HG22	3:C:384:PHE:HD1	1.75	0.52
3:C:245:PRO:O	3:C:247:LEU:N	2.43	0.52
3:C:183:LYS:O	3:C:187:GLU:HG3	2.09	0.52
3:C:137:MET:CE	3:C:181:LEU:HD11	2.40	0.52
2:B:192:GLN:NE2	6:B:2025:HOH:O	2.41	0.52
3:C:304:LYS:HG2	3:C:305:TYR:CD1	2.45	0.52
2:B:36:ARG:CZ	2:B:321:ARG:CD	2.88	0.52
3:C:347:VAL:HG12	3:C:347:VAL:O	2.08	0.52
3:C:914:VAL:O	3:C:914:VAL:HG12	2.09	0.52
1:A:92:VAL:HG11	1:A:129:ARG:HG2	1.90	0.52
2:B:393:GLU:HG3	2:B:394:VAL:HG13	1.90	0.52
2:B:36:ARG:CZ	2:B:321:ARG:HD3	2.40	0.52
3:C:498:MET:HA	3:C:498:MET:HE2	1.92	0.52
3:C:350:ARG:HD3	3:C:353:ASP:OD2	2.10	0.51
3:C:744:GLU:HG2	3:C:788:LEU:CD2	2.40	0.51
2:B:117:ARG:NH2	2:B:117:ARG:HG3	2.25	0.51
3:C:73:ASN:HD21	3:C:75:ASN:ND2	2.08	0.51
2:B:312:SER:O	2:B:316:GLN:HG3	2.11	0.51
2:B:392:LEU:HG	2:B:432:PRO:HB2	1.92	0.51
3:C:239:TYR:O	3:C:263:LYS:HE2	2.10	0.51
3:C:547:GLU:O	3:C:551:LYS:HG3	2.11	0.51
3:C:135:ASP:CG	3:C:136:ASP:N	2.63	0.51
3:C:237:HIS:CD2	3:C:291:ILE:HD11	2.45	0.51
3:C:764:VAL:HG12	3:C:768:GLN:HE21	1.74	0.51
2:B:105:LEU:O	2:B:109:VAL:HG23	2.09	0.51
3:C:872:ILE:C	3:C:874:ASN:H	2.12	0.51
3:C:118:PRO:O	3:C:119:ASP:CB	2.58	0.51

Continued on next page...

Continued from previous page...

Atom-1	Atom-2	Interatomic distance (Å)	Clash overlap (Å)
3:C:244:ASN:OD1	3:C:245:PRO:HD3	2.10	0.51
3:C:350:ARG:NH1	3:C:376:THR:CG2	2.73	0.51
3:C:45:ALA:C	3:C:54:ARG:HH12	2.14	0.51
3:C:690:ASN:HA	3:C:693:GLU:OE2	2.09	0.51
3:C:607:ALA:HB1	3:C:654:ILE:CD1	2.37	0.50
3:C:245:PRO:O	3:C:246:LEU:C	2.48	0.50
2:B:415:LEU:HD22	3:C:874:ASN:ND2	2.26	0.50
3:C:193:GLU:C	6:C:2073:HOH:O	2.49	0.50
2:B:421:ILE:O	2:B:425:VAL:HG23	2.11	0.50
3:C:90:ILE:HG23	3:C:91:VAL:N	2.25	0.50
3:C:357:PHE:CZ	3:C:472:ILE:HD13	2.46	0.50
3:C:138:VAL:HG13	3:C:141:LYS:HE2	1.93	0.50
2:B:101:MET:HA	2:B:104:GLN:HG3	1.91	0.50
3:C:847:PHE:CZ	3:C:851:LYS:HD2	2.46	0.50
1:A:56:ARG:HD2	6:A:2022:HOH:O	2.12	0.50
3:C:79:PRO:HG2	3:C:82:ASN:ND2	2.26	0.50
3:C:623:ILE:HG21	3:C:642:MET:HE3	1.93	0.50
3:C:137:MET:HE3	3:C:181:LEU:HD11	1.94	0.50
1:A:22:GLY:C	1:A:89:MET:CE	2.80	0.50
3:C:302:GLN:OE1	3:C:304:LYS:HD3	2.12	0.50
2:B:385:ILE:HB	2:B:386:PRO:HD3	1.93	0.50
3:C:733:LYS:HE2	3:C:773:SER:HB2	1.92	0.50
2:B:57:ASN:HD22	2:B:57:ASN:C	2.15	0.49
3:C:344:LEU:HB2	3:C:345:PRO:HD3	1.94	0.49
1:A:138:PHE:CZ	1:A:142:LYS:HG3	2.47	0.49
3:C:141:LYS:HG3	3:C:142:GLY:N	2.26	0.49
2:B:502:TYR:CE2	2:B:506:GLU:HG3	2.47	0.49
3:C:507:THR:CG2	3:C:509:GLU:H	2.20	0.49
2:B:300:ILE:N	2:B:301:PRO:CD	2.73	0.49
3:C:38:LEU:CD1	3:C:85:LEU:HD23	2.42	0.49
3:C:831:ARG:NE	3:C:870:GLN:HG2	2.27	0.49
2:B:19:THR:HG21	2:B:495:ASP:CB	2.42	0.49
3:C:244:ASN:HB3	3:C:245:PRO:CD	2.41	0.49
3:C:255:HIS:ND1	3:C:256:ALA:N	2.53	0.49
3:C:352:GLU:C	3:C:354:VAL:H	2.16	0.49
3:C:350:ARG:NH1	3:C:376:THR:HG21	2.28	0.49
3:C:507:THR:CG2	3:C:508:ASP:H	2.26	0.49
1:A:12:LYS:HE2	1:A:64:TRP:CZ2	2.48	0.49
2:B:96:LEU:HG	2:B:134:ARG:HG2	1.95	0.49
1:A:55:ASN:OD1	1:A:174:LEU:HD12	2.13	0.48
2:B:311:GLU:HG2	6:B:2055:HOH:O	2.12	0.48

Continued on next page...

Continued from previous page...

Atom-1	Atom-2	Interatomic distance (Å)	Clash overlap (Å)
2:B:56:ARG:NH2	2:B:121:PRO:HB3	2.28	0.48
3:C:422:LYS:HD2	3:C:425:TYR:OH	2.14	0.48
3:C:260:ILE:HG21	3:C:304:LYS:O	2.13	0.48
2:B:104:GLN:HE21	2:B:134:ARG:HH21	1.60	0.48
3:C:188:GLN:O	3:C:190:THR:N	2.45	0.48
2:B:58:PHE:CZ	2:B:118:GLU:HB2	2.48	0.48
3:C:13:GLU:O	3:C:19:THR:HB	2.13	0.48
3:C:682:LEU:C	3:C:685:PRO:HD2	2.34	0.48
3:C:469:ILE:HD11	3:C:474:LEU:HB2	1.95	0.48
3:C:234:GLY:O	3:C:237:HIS:HB3	2.13	0.48
3:C:196:LYS:HE3	3:C:247:LEU:HD11	1.96	0.48
3:C:221:ILE:O	3:C:221:ILE:HG23	2.13	0.48
3:C:588:ILE:HG12	6:C:2165:HOH:O	2.13	0.48
3:C:324:LYS:HG3	6:C:2086:HOH:O	2.14	0.48
3:C:113:ALA:CB	3:C:150:ILE:HD12	2.43	0.48
1:A:110:ARG:HD2	6:A:2047:HOH:O	2.14	0.48
3:C:493:GLN:O	3:C:497:LEU:HG	2.14	0.48
3:C:912:ILE:N	3:C:912:ILE:HD12	2.28	0.48
3:C:79:PRO:C	3:C:81:ASN:H	2.17	0.47
3:C:418:ASN:HD22	3:C:421:PHE:HE1	1.62	0.47
2:B:17:ARG:NH2	3:C:118:PRO:CD	2.74	0.47
3:C:110:SER:HA	3:C:150:ILE:HD11	1.95	0.47
3:C:191:ALA:O	3:C:193:GLU:N	2.47	0.47
3:C:62:LYS:HD2	3:C:107:GLU:HB3	1.97	0.47
3:C:117:PHE:CB	3:C:118:PRO:HD3	2.45	0.47
3:C:471:HIS:CD2	3:C:473:ILE:H	2.13	0.47
1:A:154:ASN:O	1:A:157:PHE:HB2	2.13	0.47
3:C:201:ILE:O	3:C:205:VAL:HG23	2.15	0.47
2:B:89:LEU:HD21	6:B:2011:HOH:O	2.13	0.47
2:B:13:VAL:CG1	2:B:18:ARG:HG2	2.44	0.47
2:B:144:PRO:O	2:B:148:GLN:HG3	2.14	0.47
2:B:149:LEU:HD12	2:B:192:GLN:CG	2.39	0.47
3:C:412:MET:HE3	6:C:2094:HOH:O	2.14	0.47
3:C:191:ALA:C	3:C:193:GLU:H	2.17	0.47
3:C:25:ARG:NH2	6:C:2010:HOH:O	2.47	0.47
3:C:38:LEU:HD11	3:C:85:LEU:HD23	1.97	0.47
3:C:582:GLN:NE2	3:C:629:TYR:OH	2.47	0.47
1:A:56:ARG:CG	1:A:174:LEU:HD13	2.44	0.47
2:B:355:GLU:HG2	2:B:396:GLU:OE1	2.14	0.47
2:B:362:CYS:HB2	2:B:402:GLU:HB3	1.96	0.47
3:C:264:SER:O	3:C:268:GLU:HG3	2.15	0.46

Continued on next page...

Continued from previous page...

Atom-1	Atom-2	Interatomic distance (Å)	Clash overlap (Å)
3:C:872:ILE:C	3:C:874:ASN:N	2.68	0.46
3:C:95:ILE:HD11	3:C:131:ARG:CG	2.45	0.46
3:C:322:ILE:HG21	3:C:325:TYR:HD1	1.80	0.46
3:C:299:ILE:O	3:C:299:ILE:HG22	2.14	0.46
3:C:365:ILE:O	3:C:369:LEU:HG	2.14	0.46
2:B:39:GLN:CG	2:B:39:GLN:O	2.61	0.46
3:C:682:LEU:O	3:C:685:PRO:HD2	2.15	0.46
2:B:355:GLU:OE2	2:B:358:LYS:HE3	2.15	0.46
3:C:621:GLU:OE2	3:C:899:VAL:HG22	2.15	0.46
3:C:836:ILE:HD12	3:C:921:TYR:CD2	2.50	0.46
3:C:100:ASN:HD22	3:C:100:ASN:HA	1.54	0.46
3:C:424:LEU:O	3:C:428:LEU:HG	2.15	0.46
3:C:876:LYS:NZ	3:C:880:VAL:HG23	2.30	0.46
3:C:123:THR:HG22	3:C:127:ASP:OD2	2.15	0.46
1:A:153:SER:O	1:A:154:ASN:HB2	2.16	0.46
3:C:302:GLN:O	3:C:305:TYR:CD1	2.64	0.46
1:A:105:HIS:HE1	1:A:144:LEU:HD21	1.81	0.46
3:C:244:ASN:CB	3:C:245:PRO:CD	2.93	0.46
3:C:911:GLU:C	3:C:912:ILE:HD12	2.36	0.46
3:C:540:GLU:H	3:C:540:GLU:CD	2.19	0.46
2:B:126:VAL:O	2:B:129:ALA:HB3	2.16	0.46
3:C:299:ILE:HG23	3:C:305:TYR:CD2	2.51	0.46
2:B:117:ARG:NE	2:B:119:HIS:O	2.49	0.46
3:C:354:VAL:O	3:C:357:PHE:CB	2.57	0.45
1:A:8:GLN:O	1:A:9:VAL:CG2	2.61	0.45
3:C:351:GLU:HG2	3:C:420:LYS:NZ	2.31	0.45
3:C:181:LEU:O	3:C:185:VAL:HG13	2.16	0.45
1:A:54:THR:CB	1:A:174:LEU:HD11	2.46	0.45
3:C:41:LEU:HD22	3:C:93:LEU:CD2	2.47	0.45
3:C:1:MET:HA	3:C:1:MET:CE	2.47	0.45
2:B:352:SER:HA	2:B:353:PRO:HD3	1.81	0.45
2:B:19:THR:CG2	2:B:496:LYS:HG3	2.47	0.45
3:C:331:ASN:O	3:C:332:GLU:C	2.55	0.45
2:B:122:PRO:O	2:B:126:VAL:HG23	2.17	0.45
2:B:36:ARG:O	2:B:37:ASP:C	2.54	0.45
3:C:73:ASN:HD21	3:C:75:ASN:CG	2.20	0.45
1:A:105:HIS:CE1	1:A:144:LEU:HD21	2.51	0.45
2:B:87:GLN:HG3	2:B:88:GLU:HG3	1.99	0.45
2:B:13:VAL:HG13	2:B:18:ARG:HG2	1.99	0.45
3:C:44:ILE:O	3:C:54:ARG:CZ	2.65	0.45
3:C:938:LEU:CD1	3:C:957:LEU:HD13	2.47	0.45

Continued on next page...

Continued from previous page...

Atom-1	Atom-2	Interatomic distance (Å)	Clash overlap (Å)
3:C:472:ILE:CG2	3:C:509:GLU:OE1	2.65	0.45
3:C:472:ILE:HG21	3:C:509:GLU:OE1	2.17	0.45
2:B:494:ASN:HD21	2:B:496:LYS:HB2	1.82	0.45
3:C:784:VAL:HG21	3:C:830:ASP:HB3	1.98	0.45
3:C:15:VAL:CG1	6:C:2002:HOH:O	2.65	0.44
3:C:196:LYS:O	3:C:200:ASN:ND2	2.51	0.44
3:C:347:VAL:CG1	3:C:347:VAL:O	2.64	0.44
3:C:41:LEU:HD22	3:C:93:LEU:HD23	1.99	0.44
3:C:709:ILE:HG23	3:C:750:ILE:HD11	1.98	0.44
2:B:56:ARG:NH1	2:B:157:ASN:O	2.51	0.44
1:A:8:GLN:C	1:A:9:VAL:HG23	2.37	0.44
3:C:643:MET:CE	3:C:646:PHE:HD1	2.29	0.44
2:B:216:ALA:O	2:B:220:ILE:HG13	2.17	0.44
2:B:298:VAL:HG23	2:B:300:ILE:HG13	1.99	0.44
3:C:199:LEU:HG	3:C:203:PHE:CE1	2.52	0.44
3:C:302:GLN:HB3	3:C:305:TYR:HE1	1.82	0.44
3:C:860:MET:HG3	3:C:941:ILE:HG12	2.00	0.44
3:C:349:LEU:O	3:C:350:ARG:CB	2.65	0.44
3:C:376:THR:N	6:C:2092:HOH:O	2.50	0.44
3:C:141:LYS:CG	3:C:142:GLY:N	2.80	0.44
2:B:401:LYS:HG3	2:B:444:ILE:HD11	2.00	0.44
2:B:45:LYS:CB	3:C:223:GLU:HG3	2.48	0.44
3:C:123:THR:HG22	3:C:127:ASP:CG	2.38	0.44
2:B:301:PRO:O	2:B:305:VAL:HG23	2.18	0.44
3:C:94:MET:HE2	3:C:102:GLN:HG3	2.00	0.44
2:B:153:TRP:HD1	2:B:153:TRP:O	2.01	0.43
2:B:359:LYS:HB3	2:B:359:LYS:HZ3	1.81	0.43
3:C:698:ILE:HB	3:C:699:PRO:HD3	2.00	0.43
1:A:123:LYS:HG2	4:A:1177:GTP:C6	2.53	0.43
3:C:396:VAL:O	3:C:400:PHE:HD1	2.02	0.43
2:B:87:GLN:HG3	2:B:88:GLU:N	2.33	0.43
2:B:194:ILE:HG23	2:B:234:THR:HG22	2.00	0.43
2:B:456:LEU:HD21	2:B:477:ILE:HD12	1.99	0.43
3:C:828:LEU:C	3:C:914:VAL:HG11	2.39	0.43
3:C:79:PRO:O	3:C:81:ASN:N	2.51	0.43
3:C:643:MET:HE1	3:C:646:PHE:CD1	2.51	0.43
3:C:680:LYS:N	3:C:681:PRO:HD2	2.33	0.43
3:C:623:ILE:HG21	3:C:642:MET:CE	2.48	0.43
3:C:642:MET:HE1	3:C:664:ILE:HG21	2.01	0.43
2:B:95:GLN:HG3	2:B:103:GLU:HB3	2.01	0.43
3:C:871:SER:C	3:C:873:ALA:H	2.20	0.43

Continued on next page...

Continued from previous page...

Atom-1	Atom-2	Interatomic distance (Å)	Clash overlap (Å)
3:C:302:GLN:O	3:C:303:PRO:C	2.54	0.43
3:C:287:GLU:O	3:C:291:ILE:HG13	2.18	0.43
2:B:37:ASP:CG	2:B:40:GLN:NE2	2.72	0.43
3:C:191:ALA:O	3:C:199:LEU:HD13	2.18	0.43
3:C:15:VAL:HG11	6:C:2002:HOH:O	2.18	0.43
1:A:10:GLN:HA	1:A:60:LYS:O	2.19	0.43
3:C:521:GLU:O	3:C:525:THR:HG23	2.19	0.43
1:A:169:ILE:O	1:A:169:ILE:HG22	2.19	0.43
3:C:400:PHE:HB3	3:C:404:MET:HE2	2.01	0.43
3:C:361:PRO:O	3:C:364:TYR:HB3	2.19	0.43
3:C:11:LEU:HD12	3:C:11:LEU:HA	1.89	0.43
3:C:343:ILE:HD13	3:C:385:LEU:HD13	2.00	0.43
2:B:395:ALA:O	2:B:400:LYS:HE3	2.19	0.43
3:C:376:THR:CG2	3:C:377:ARG:H	2.27	0.42
3:C:184:THR:CG2	3:C:188:GLN:HE21	2.32	0.42
3:C:558:LEU:CD2	3:C:567:LEU:HD11	2.42	0.42
3:C:930:ASN:HB2	3:C:938:LEU:HG	2.01	0.42
3:C:246:LEU:HD23	3:C:246:LEU:HA	1.64	0.42
2:B:45:LYS:HB2	3:C:223:GLU:HG3	2.00	0.42
3:C:938:LEU:HD13	3:C:957:LEU:CD1	2.48	0.42
3:C:822:LEU:N	3:C:823:PRO:HD2	2.34	0.42
6:A:2046:HOH:O	3:C:100:ASN:ND2	2.52	0.42
3:C:871:SER:C	3:C:873:ALA:N	2.71	0.42
3:C:322:ILE:CG2	3:C:325:TYR:HD1	2.32	0.42
2:B:112:ARG:HD2	2:B:112:ARG:C	2.40	0.42
3:C:171:LEU:O	3:C:175:THR:HG23	2.19	0.42
1:A:114:ASN:O	1:A:114:ASN:CG	2.57	0.42
3:C:562:SER:HB2	3:C:605:ILE:HD13	2.01	0.42
3:C:659:PRO:O	3:C:663:GLN:HG3	2.20	0.42
3:C:382:THR:HG22	3:C:386:LYS:HE3	2.02	0.42
2:B:364:THR:HA	6:B:2065:HOH:O	2.19	0.42
3:C:95:ILE:CD1	3:C:131:ARG:HD2	2.50	0.42
3:C:643:MET:CE	3:C:646:PHE:CD1	3.03	0.42
2:B:95:GLN:O	2:B:98:SER:HB3	2.19	0.42
2:B:36:ARG:CZ	2:B:321:ARG:HD2	2.50	0.42
1:A:117:ILE:HB	1:A:144:LEU:HD22	2.00	0.42
2:B:95:GLN:CG	2:B:103:GLU:HB3	2.50	0.41
2:B:38:THR:O	2:B:38:THR:HG22	2.19	0.41
2:B:512:GLU:O	2:B:513:GLU:C	2.58	0.41
3:C:876:LYS:HZ2	3:C:880:VAL:HG23	1.85	0.41
1:A:54:THR:HB	1:A:174:LEU:HD11	2.01	0.41

Continued on next page...

Continued from previous page...

Atom-1	Atom-2	Interatomic distance (Å)	Clash overlap (Å)
3:C:796:ASP:O	3:C:800:HIS:CD2	2.73	0.41
3:C:958:VAL:HG12	3:C:958:VAL:O	2.20	0.41
3:C:942:LEU:HB2	3:C:943:PRO:HD3	2.02	0.41
2:B:121:PRO:HA	2:B:122:PRO:HD3	1.80	0.41
2:B:149:LEU:CD1	2:B:192:GLN:HG3	2.43	0.41
3:C:244:ASN:OD1	3:C:245:PRO:CD	2.68	0.41
3:C:199:LEU:HB2	6:C:2073:HOH:O	2.21	0.41
1:A:55:ASN:OD1	1:A:56:ARG:HG2	2.20	0.41
3:C:152:LYS:HE2	6:C:2055:HOH:O	2.20	0.41
2:B:415:LEU:C	2:B:416:GLN:HG3	2.40	0.41
3:C:357:PHE:CZ	3:C:472:ILE:CD1	3.03	0.41
1:A:30:HIS:CE1	1:A:157:PHE:CE2	3.09	0.41
3:C:875:LEU:O	3:C:876:LYS:O	2.39	0.41
3:C:117:PHE:CZ	3:C:125:LEU:HD21	2.42	0.41
3:C:365:ILE:HD13	3:C:514:THR:HG21	2.01	0.41
2:B:322:ALA:O	2:B:326:ILE:HG12	2.20	0.41
2:B:247:LYS:HA	2:B:248:PRO:HA	1.97	0.41
2:B:57:ASN:ND2	2:B:57:ASN:C	2.73	0.41
3:C:295:LEU:O	3:C:299:ILE:HG13	2.21	0.41
2:B:87:GLN:O	2:B:90:PRO:HD2	2.21	0.41
2:B:279:TRP:CD2	2:B:318:PRO:HB3	2.56	0.41
3:C:137:MET:HA	3:C:140:ASN:HD22	1.85	0.41
2:B:19:THR:HG21	2:B:496:LYS:N	2.33	0.41
3:C:401:LEU:HD23	3:C:404:MET:HE3	2.03	0.41
3:C:179:LEU:HG	3:C:183:LYS:HE3	2.03	0.41
3:C:13:GLU:CD	3:C:19:THR:HG21	2.40	0.41
3:C:401:LEU:CA	3:C:404:MET:HE3	2.48	0.41
1:A:9:VAL:HG11	1:A:59:ILE:HD12	2.02	0.41
3:C:322:ILE:HG21	3:C:325:TYR:CD1	2.55	0.41
2:B:373:THR:CG2	2:B:417:ARG:NE	2.83	0.41
3:C:293:TRP:HD1	3:C:293:TRP:O	2.04	0.41
2:B:124:ASP:O	2:B:128:GLN:HG2	2.19	0.41
2:B:17:ARG:HH22	3:C:118:PRO:CD	2.32	0.41
3:C:174:PHE:O	3:C:177:PRO:HD2	2.21	0.41
3:C:771:GLN:O	3:C:772:ASN:CG	2.58	0.41
3:C:301:ASN:HA	3:C:377:ARG:NH1	2.35	0.40
1:A:143:ASN:HD21	3:C:255:HIS:HA	1.86	0.40
3:C:886:GLU:HB3	3:C:887:GLU:H	1.73	0.40
1:A:45:VAL:HG22	1:A:46:GLU:N	2.36	0.40
3:C:874:ASN:C	3:C:875:LEU:O	2.59	0.40
3:C:31:GLU:OE1	3:C:67:ARG:NH2	2.52	0.40

Continued on next page...

Continued from previous page...

Atom-1	Atom-2	Interatomic distance (Å)	Clash overlap (Å)
3:C:422:LYS:HG2	3:C:474:LEU:CD2	2.50	0.40
3:C:575:ARG:HG2	3:C:618:TYR:CE1	2.56	0.40
1:A:12:LYS:NZ	1:A:79:TYR:O	2.54	0.40
2:B:87:GLN:HA	2:B:87:GLN:NE2	2.36	0.40
2:B:379:VAL:HG13	2:B:384:LEU:HD12	2.04	0.40
3:C:349:LEU:HB2	3:C:350:ARG:H	1.48	0.40
3:C:425:TYR:HE2	3:C:459:GLU:HG2	1.87	0.40
3:C:67:ARG:NH1	6:C:2029:HOH:O	2.35	0.40
3:C:716:PHE:O	3:C:754:ARG:NH2	2.36	0.40
2:B:376:ILE:CD1	2:B:413:GLY:HA3	2.52	0.40

There are no symmetry-related clashes.

5.3 Torsion angles ⓘ

5.3.1 Protein backbone ⓘ

In the following table, the Percentiles column shows the percent Ramachandran outliers of the chain as a percentile score with respect to all X-ray entries followed by that with respect to entries of similar resolution.

The Analysed column shows the number of residues for which the backbone conformation was analysed, and the total number of residues.

Mol	Chain	Analysed	Favoured	Allowed	Outliers	Percentiles	
1	A	168/176 (96%)	159 (95%)	6 (4%)	3 (2%)	11	4
2	B	458/530 (86%)	437 (95%)	16 (4%)	5 (1%)	17	9
3	C	926/960 (96%)	859 (93%)	46 (5%)	21 (2%)	8	3
All	All	1552/1666 (93%)	1455 (94%)	68 (4%)	29 (2%)	10	4

All (29) Ramachandran outliers are listed below:

Mol	Chain	Res	Type
1	A	8	GLN
1	A	9	VAL
2	B	37	ASP
2	B	39	GLN
3	C	117	PHE
3	C	192	ASN
3	C	244	ASN

Continued on next page...

Continued from previous page...

Mol	Chain	Res	Type
3	C	246	LEU
3	C	247	LEU
3	C	301	ASN
3	C	304	LYS
3	C	349	LEU
3	C	350	ARG
3	C	876	LYS
3	C	877	ASN
3	C	80	ALA
3	C	772	ASN
3	C	875	LEU
2	B	227	ASN
3	C	119	ASP
3	C	243	SER
1	A	113	GLU
3	C	332	GLU
3	C	351	GLU
2	B	513	GLU
3	C	361	PRO
3	C	873	ALA
3	C	189	ILE
2	B	418	PRO

5.3.2 Protein sidechains ⓘ

In the following table, the Percentiles column shows the percent sidechain outliers of the chain as a percentile score with respect to all X-ray entries followed by that with respect to entries of similar resolution.

The Analysed column shows the number of residues for which the sidechain conformation was analysed, and the total number of residues.

Mol	Chain	Analysed	Rotameric	Outliers	Percentiles	
1	A	150/153 (98%)	149 (99%)	1 (1%)	88	91
2	B	401/457 (88%)	390 (97%)	11 (3%)	52	52
3	C	859/882 (97%)	840 (98%)	19 (2%)	60	62
All	All	1410/1492 (94%)	1379 (98%)	31 (2%)	60	62

All (31) residues with a non-rotameric sidechain are listed below:

Mol	Chain	Res	Type
1	A	129	ARG
2	B	40	GLN
2	B	57	ASN
2	B	146	MET
2	B	247	LYS
2	B	274	LEU
2	B	304	LEU
2	B	356	ASN
2	B	366	SER
2	B	388	LEU
2	B	402	GLU
2	B	458	MET
3	C	11	LEU
3	C	19	THR
3	C	27	LEU
3	C	29	GLN
3	C	34	ASP
3	C	100	ASN
3	C	137	MET
3	C	185	VAL
3	C	204	ASP
3	C	245	PRO
3	C	301	ASN
3	C	329	PHE
3	C	332	GLU
3	C	349	LEU
3	C	355	GLU
3	C	515	TYR
3	C	655	GLN
3	C	728	ARG
3	C	876	LYS

Some sidechains can be flipped to improve hydrogen bonding and reduce clashes. All (34) such sidechains are listed below:

Mol	Chain	Res	Type
1	A	30	HIS
1	A	100	ASN
1	A	114	ASN
1	A	143	ASN
1	A	156	ASN
2	B	40	GLN
2	B	57	ASN
2	B	87	GLN

Continued on next page...

Continued from previous page...

Mol	Chain	Res	Type
2	B	95	GLN
2	B	97	ASN
2	B	104	GLN
2	B	180	GLN
2	B	192	GLN
2	B	289	GLN
2	B	494	ASN
3	C	29	GLN
3	C	73	ASN
3	C	75	ASN
3	C	76	HIS
3	C	82	ASN
3	C	100	ASN
3	C	140	ASN
3	C	192	ASN
3	C	331	ASN
3	C	398	ASN
3	C	418	ASN
3	C	471	HIS
3	C	506	GLN
3	C	582	GLN
3	C	655	GLN
3	C	745	HIS
3	C	768	GLN
3	C	800	HIS
3	C	954	ASN

5.3.3 RNA ⓘ

There are no RNA molecules in this entry.

5.4 Non-standard residues in protein, DNA, RNA chains ⓘ

There are no non-standard protein/DNA/RNA residues in this entry.

5.5 Carbohydrates ⓘ

There are no carbohydrates in this entry.

5.6 Ligand geometry

Of 2 ligands modelled in this entry, 1 is monoatomic - leaving 1 for Mogul analysis.

In the following table, the Counts columns list the number of bonds (or angles) for which Mogul statistics could be retrieved, the number of bonds (or angles) that are observed in the model and the number of bonds (or angles) that are defined in the chemical component dictionary. The Link column lists molecule types, if any, to which the group is linked. The Z score for a bond length (or angle) is the number of standard deviations the observed value is removed from the expected value. A bond length (or angle) with $|Z| > 2$ is considered an outlier worth inspection. RMSZ is the root-mean-square of all Z scores of the bond lengths (or angles).

Mol	Type	Chain	Res	Link	Bond lengths			Bond angles		
					Counts	RMSZ	# Z > 2	Counts	RMSZ	# Z > 2
4	GTP	A	1177	5	25,34,34	3.06	9 (36%)	34,54,54	2.62	18 (52%)

In the following table, the Chirals column lists the number of chiral outliers, the number of chiral centers analysed, the number of these observed in the model and the number defined in the chemical component dictionary. Similar counts are reported in the Torsion and Rings columns. '-' means no outliers of that kind were identified.

Mol	Type	Chain	Res	Link	Chirals	Torsions	Rings
4	GTP	A	1177	5	-	0/18/38/38	0/3/3/3

All (9) bond length outliers are listed below:

Mol	Chain	Res	Type	Atoms	Z	Observed(Å)	Ideal(Å)
4	A	1177	GTP	O4'-C1'	-4.51	1.35	1.41
4	A	1177	GTP	PG-O2G	-3.69	1.41	1.54
4	A	1177	GTP	PA-O2A	-2.91	1.42	1.54
4	A	1177	GTP	PG-O3G	-2.57	1.45	1.54
4	A	1177	GTP	C2'-C3'	3.14	1.62	1.53
4	A	1177	GTP	C2-N2	3.43	1.41	1.34
4	A	1177	GTP	O3'-C3'	6.03	1.57	1.43
4	A	1177	GTP	O4'-C4'	6.20	1.59	1.45
4	A	1177	GTP	C6-N1	8.17	1.48	1.33

All (18) bond angle outliers are listed below:

Mol	Chain	Res	Type	Atoms	Z	Observed(°)	Ideal(°)
4	A	1177	GTP	C5-C6-N1	-4.37	117.62	123.59
4	A	1177	GTP	O5'-PA-O1A	-3.93	94.36	109.62
4	A	1177	GTP	PA-O3A-PB	-3.40	123.19	132.73
4	A	1177	GTP	N3-C2-N1	-3.02	122.84	127.44
4	A	1177	GTP	O2B-PB-O1B	-2.67	98.05	112.53

Continued on next page...

Continued from previous page...

Mol	Chain	Res	Type	Atoms	Z	Observed(°)	Ideal(°)
4	A	1177	GTP	C6-C5-C4	-2.56	117.84	120.90
4	A	1177	GTP	O2A-PA-O1A	-2.39	99.55	112.53
4	A	1177	GTP	N2-C2-N1	-2.34	113.32	117.20
4	A	1177	GTP	C2'-C3'-C4'	-2.25	97.98	102.61
4	A	1177	GTP	O2A-PA-O5'	2.29	120.03	108.46
4	A	1177	GTP	C6-N1-C2	2.55	119.47	115.94
4	A	1177	GTP	O5'-C5'-C4'	2.80	119.45	109.12
4	A	1177	GTP	N2-C2-N3	3.15	123.83	117.80
4	A	1177	GTP	O2B-PB-O3A	3.19	119.57	105.09
4	A	1177	GTP	O3G-PG-O1G	4.01	123.48	110.58
4	A	1177	GTP	O2B-PB-O3B	4.17	124.00	105.09
4	A	1177	GTP	C4-C5-N7	4.43	113.56	109.48
4	A	1177	GTP	C2'-C1'-N9	6.56	124.31	114.29

There are no chirality outliers.

There are no torsion outliers.

There are no ring outliers.

1 monomer is involved in 1 short contact:

Mol	Chain	Res	Type	Clashes	Symm-Clashes
4	A	1177	GTP	1	0

5.7 Other polymers [i](#)

There are no such residues in this entry.

5.8 Polymer linkage issues [i](#)

There are no chain breaks in this entry.

6 Fit of model and data

6.1 Protein, DNA and RNA chains

In the following table, the column labelled ‘#RSRZ> 2’ contains the number (and percentage) of RSRZ outliers, followed by percent RSRZ outliers for the chain as percentile scores relative to all X-ray entries and entries of similar resolution. The OWAB column contains the minimum, median, 95th percentile and maximum values of the occupancy-weighted average B-factor per residue. The column labelled ‘Q< 0.9’ lists the number of (and percentage) of residues with an average occupancy less than 0.9.

Mol	Chain	Analysed	<RSRZ>	#RSRZ>2	OWAB(Å ²)	Q<0.9
1	A	170/176 (96%)	0.23	7 (4%) 41 42	19, 31, 55, 75	0
2	B	464/530 (87%)	0.76	63 (13%) 4 4	25, 42, 82, 97	1 (0%)
3	C	938/960 (97%)	0.47	75 (7%) 15 16	18, 39, 68, 79	0
All	All	1572/1666 (94%)	0.53	145 (9%) 11 12	18, 39, 70, 97	1 (0%)

All (145) RSRZ outliers are listed below:

Mol	Chain	Res	Type	RSRZ
3	C	247	LEU	8.5
2	B	514	ASP	7.4
2	B	58	PHE	7.2
2	B	118	GLU	7.1
3	C	871	SER	7.0
2	B	119	HIS	6.7
3	C	349	LEU	6.7
2	B	120	ARG	6.1
1	A	7	PRO	6.0
2	B	38	THR	5.9
2	B	88	GLU	5.9
3	C	352	GLU	5.9
3	C	299	ILE	5.2
3	C	356	LEU	5.2
2	B	56	ARG	5.1
3	C	371	GLY	5.1
3	C	301	ASN	5.1
2	B	39	GLN	5.0
3	C	350	ARG	4.8
2	B	19	THR	4.6
3	C	351	GLU	4.6
3	C	255	HIS	4.6
2	B	87	GLN	4.6

Continued on next page...

Continued from previous page...

Mol	Chain	Res	Type	RSRZ
2	B	102	GLN	4.6
2	B	109	VAL	4.5
2	B	101	MET	4.5
3	C	190	THR	4.5
3	C	353	ASP	4.5
2	B	48	ARG	4.4
2	B	123	ILE	4.4
3	C	245	PRO	4.4
2	B	94	GLN	4.3
3	C	880	VAL	4.3
2	B	40	GLN	4.3
3	C	870	GLN	4.3
2	B	95	GLN	4.3
2	B	121	PRO	4.3
2	B	49	ASP	4.2
3	C	34	ASP	4.1
2	B	89	LEU	4.1
2	B	115	LEU	4.1
2	B	99	ASP	4.0
2	B	100	ASP	4.0
2	B	108	THR	3.8
2	B	226	SER	3.8
3	C	324	LYS	3.8
3	C	329	PHE	3.8
2	B	246	LYS	3.7
3	C	872	ILE	3.7
3	C	198	SER	3.7
3	C	916	ASN	3.7
1	A	113	GLU	3.7
3	C	197	ALA	3.7
3	C	135	ASP	3.5
3	C	376	THR	3.4
3	C	33	GLN	3.4
2	B	117	ARG	3.4
3	C	355	GLU	3.4
3	C	904	LYS	3.4
2	B	111	PHE	3.4
3	C	3	ASP	3.4
3	C	915	ASN	3.3
3	C	32	THR	3.3
2	B	414	GLY	3.3
2	B	125	VAL	3.3

Continued on next page...

Continued from previous page...

Mol	Chain	Res	Type	RSRZ
2	B	107	ALA	3.2
2	B	289	GLN	3.2
3	C	73	ASN	3.2
3	C	468	ASN	3.2
3	C	203	PHE	3.2
3	C	400	PHE	3.2
2	B	103	GLU	3.1
3	C	328	ILE	3.1
3	C	138	VAL	3.1
3	C	348	THR	3.0
2	B	97	ASN	3.0
3	C	74	GLY	3.0
2	B	52	LEU	3.0
2	B	93	THR	2.9
2	B	15	GLU	2.9
2	B	180	GLN	2.8
3	C	256	ALA	2.8
3	C	411	TYR	2.8
3	C	357	PHE	2.8
2	B	91	GLN	2.8
3	C	341	GLN	2.8
3	C	246	LEU	2.8
2	B	495	ASP	2.8
2	B	439	ILE	2.8
3	C	117	PHE	2.7
1	A	71	LYS	2.7
2	B	512	GLU	2.7
2	B	146	MET	2.7
1	A	170	GLY	2.7
3	C	242	TYR	2.6
3	C	879	TYR	2.6
3	C	421	PHE	2.6
3	C	199	LEU	2.6
3	C	258	VAL	2.6
3	C	1	MET	2.6
3	C	137	MET	2.6
3	C	354	VAL	2.5
3	C	367	ARG	2.5
3	C	302	GLN	2.5
2	B	96	LEU	2.5
3	C	418	ASN	2.5
2	B	247	LYS	2.5

Continued on next page...

Continued from previous page...

Mol	Chain	Res	Type	RSRZ
3	C	305	TYR	2.5
2	B	513	GLU	2.4
3	C	359	ASP	2.4
2	B	498	TYR	2.4
3	C	185	VAL	2.4
2	B	18	ARG	2.4
3	C	358	GLU	2.4
2	B	105	LEU	2.3
2	B	124	ASP	2.3
3	C	290	GLN	2.3
3	C	873	ALA	2.3
3	C	958	VAL	2.3
1	A	144	LEU	2.3
3	C	407	PHE	2.3
2	B	184	THR	2.3
2	B	159	ALA	2.3
3	C	244	ASN	2.3
3	C	303	PRO	2.2
2	B	47	LYS	2.2
2	B	225	ASN	2.2
3	C	469	ILE	2.2
3	C	959	GLY	2.2
2	B	415	LEU	2.1
3	C	286	ASN	2.1
3	C	950	GLN	2.1
3	C	508	ASP	2.1
3	C	947	GLN	2.1
2	B	92	MET	2.1
3	C	874	ASN	2.1
1	A	143	ASN	2.0
2	B	98	SER	2.0
2	B	171	ASP	2.0
2	B	436	LEU	2.0
3	C	269	LEU	2.0
2	B	46	ALA	2.0
2	B	511	GLU	2.0
1	A	140	ARG	2.0
3	C	340	GLU	2.0

6.2 Non-standard residues in protein, DNA, RNA chains ⓘ

There are no non-standard protein/DNA/RNA residues in this entry.

6.3 Carbohydrates [i](#)

There are no carbohydrates in this entry.

6.4 Ligands [i](#)

In the following table, the Atoms column lists the number of modelled atoms in the group and the number defined in the chemical component dictionary. LLDF column lists the quality of electron density of the group with respect to its neighbouring residues in protein, DNA or RNA chains. The B-factors column lists the minimum, median, 95th percentile and maximum values of B factors of atoms in the group. The column labelled 'Q< 0.9' lists the number of atoms with occupancy less than 0.9.

Mol	Type	Chain	Res	Atoms	RSCC	RSR	LLDF	B-factors(\AA^2)	Q<0.9
5	MG	A	1178	1/1	0.96	0.13	1.13	31,31,31,31	0
4	GTP	A	1177	32/32	0.98	0.10	-0.53	19,23,30,31	0

6.5 Other polymers [i](#)

There are no such residues in this entry.