



Full wwPDB X-ray Structure Validation Report ⓘ

Feb 1, 2016 – 06:12 AM GMT

PDB ID : 2WB5
Title : GLCNACSTATINS ARE NANOMOLAR INHIBITORS OF HUMAN O-GLCNACASE INDUCING CELLULAR HYPER-O-GLCNACYLATION
Authors : Dorfmueller, H.C.; Borodkin, V.S.; Schimpl, M.; Van Aalten, D.M.F.
Deposited on : 2009-02-20
Resolution : 2.31 Å(reported)

This is a Full wwPDB X-ray Structure Validation Report for a publicly released PDB entry.
We welcome your comments at validation@mail.wwpdb.org
A user guide is available at
<http://wwpdb.org/validation/2016/XrayValidationReportHelp>
with specific help available everywhere you see the ⓘ symbol.

The following versions of software and data (see [references ⓘ](#)) were used in the production of this report:

MolProbity : 4.02b-467
Mogul : 1.7 (RC4), CSD as536be (2015)
Xtriage (Phenix) : 1.9-1692
EDS : rb-20026688
Percentile statistics : 20151230.v01 (using entries in the PDB archive December 30th 2015)
Refmac : 5.8.0135
CCP4 : 6.5.0
Ideal geometry (proteins) : Engh & Huber (2001)
Ideal geometry (DNA, RNA) : Parkinson et al. (1996)
Validation Pipeline (wwPDB-VP) : trunk26865

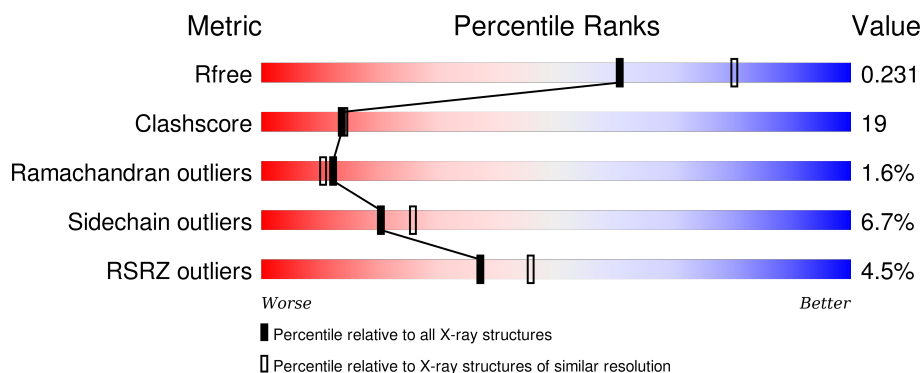
1 Overall quality at a glance

The following experimental techniques were used to determine the structure:

X-RAY DIFFRACTION

The reported resolution of this entry is 2.31 Å.

Percentile scores (ranging between 0-100) for global validation metrics of the entry are shown in the following graphic. The table shows the number of entries on which the scores are based.



Metric	Whole archive (#Entries)	Similar resolution (#Entries, resolution range(Å))
R_{free}	91344	4425 (2.34-2.30)
Clashscore	102246	5057 (2.34-2.30)
Ramachandran outliers	100387	5008 (2.34-2.30)
Sidechain outliers	100360	5007 (2.34-2.30)
RSRZ outliers	91569	4432 (2.34-2.30)

The table below summarises the geometric issues observed across the polymeric chains and their fit to the electron density. The red, orange, yellow and green segments on the lower bar indicate the fraction of residues that contain outliers for ≥ 3 , 2, 1 and 0 types of geometric quality criteria. A grey segment represents the fraction of residues that are not modelled. The numeric value for each fraction is indicated below the corresponding segment, with a dot representing fractions $\leq 5\%$. The upper red bar (where present) indicates the fraction of residues that have poor fit to the electron density. The numeric value is given above the bar.

Mol	Chain	Length	Quality of chain
1	A	594	<div> <div>5%</div> <div>69%</div> <div>23%</div> <div>6%</div> <div>...</div> </div>
1	B	594	<div> <div>4%</div> <div>74%</div> <div>22%</div> <div>...</div> </div>

The following table lists non-polymeric compounds, carbohydrate monomers and non-standard residues in protein, DNA, RNA chains that are outliers for geometric or electron-density-fit criteria:

Mol	Type	Chain	Res	Chirality	Geometry	Clashes	Electron density
2	CL	A	1625	-	-	X	-

2 Entry composition

There are 5 unique types of molecules in this entry. The entry contains 9953 atoms, of which 0 are hydrogens and 0 are deuteriums.

In the tables below, the ZeroOcc column contains the number of atoms modelled with zero occupancy, the AltConf column contains the number of residues with at least one atom in alternate conformation and the Trace column contains the number of residues modelled with at most 2 atoms.

- Molecule 1 is a protein called O-GLCNACASE NAGJ.

Mol	Chain	Residues	Atoms					ZeroOcc	AltConf	Trace
1	A	585	Total	C	N	O	S	0	0	0
			4625	2910	756	942	17			
1	B	585	Total	C	N	O	S	0	0	0
			4629	2913	757	942	17			

There are 2 discrepancies between the modelled and reference sequences:

Chain	Residue	Modelled	Actual	Comment	Reference
A	388	ASP	ASN	CONFLICT	UNP Q0TR53
B	388	ASP	ASN	CONFLICT	UNP Q0TR53

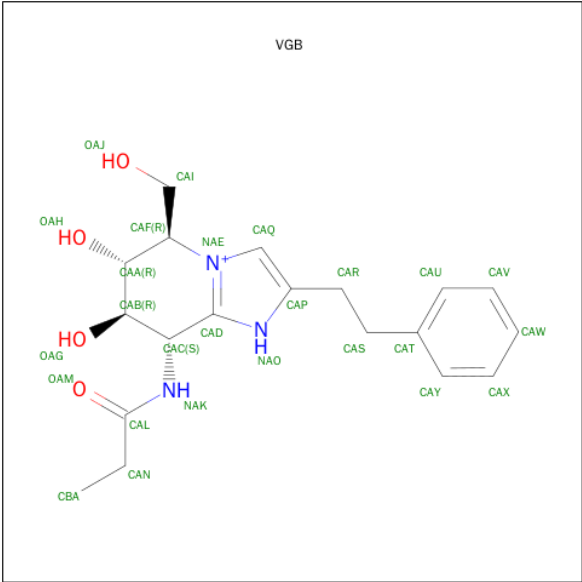
- Molecule 2 is CHLORIDE ION (three-letter code: CL) (formula: Cl).

Mol	Chain	Residues	Atoms		ZeroOcc	AltConf
2	B	3	Total	Cl	0	0
			3	3		
2	A	2	Total	Cl	0	0
			2	2		

- Molecule 3 is SODIUM ION (three-letter code: NA) (formula: Na).

Mol	Chain	Residues	Atoms		ZeroOcc	AltConf
3	A	1	Total	Na	0	0
			1	1		

- Molecule 4 is (5R,6R,7R,8S)-6,7-DIHYDROXY-5-(HYDROXYMETHYL)-2-(2-PHENYLETHYL)-8-(PROPANOYLAMINO)-5,6,7,8-TETRAHYDRO-1H-IMIDAZO[1,2-A]PYRIDIN-4-IUM (three-letter code: VGB) (formula: C₁₉H₂₆N₃O₄).



Mol	Chain	Residues	Atoms				ZeroOcc	AltConf
4	A	1	Total	C	N	O	0	0
			26	19	3	4		
4	B	1	Total	C	N	O	0	0
			26	19	3	4		

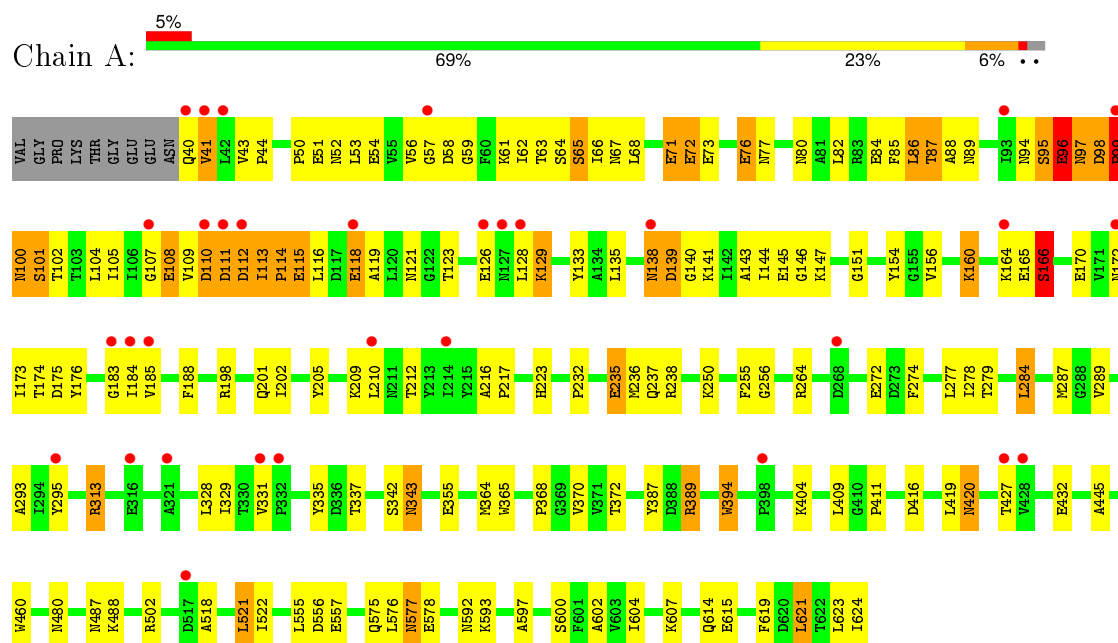
- Molecule 5 is water.

Mol	Chain	Residues	Atoms		ZeroOcc	AltConf
5	A	280	Total	O	0	0
			280	280		
5	B	361	Total	O	0	0
			361	361		

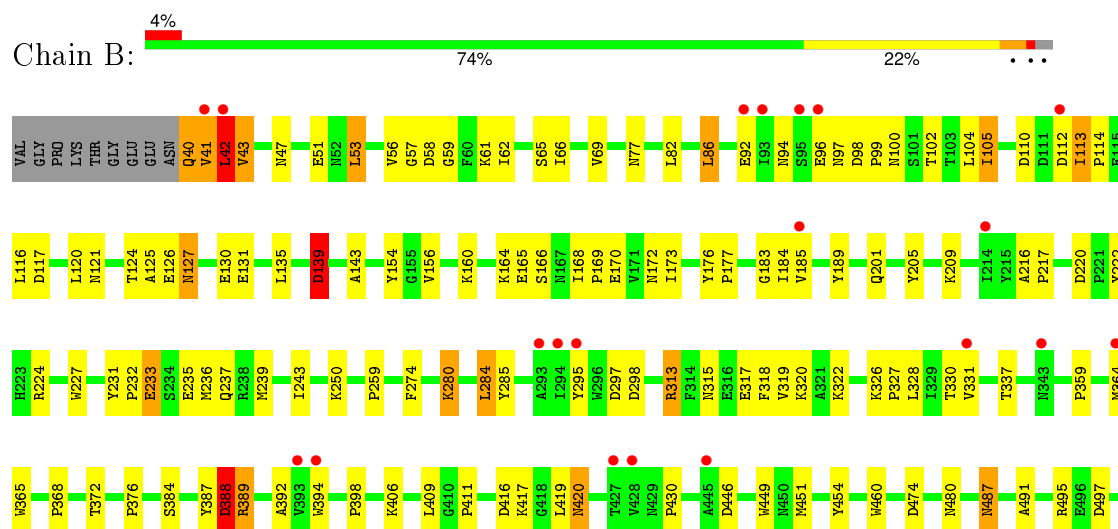
3 Residue-property plots

These plots are drawn for all protein, RNA and DNA chains in the entry. The first graphic for a chain summarises the proportions of errors displayed in the second graphic. The second graphic shows the sequence view annotated by issues in geometry and electron density. Residues are color-coded according to the number of geometric quality criteria for which they contain at least one outlier: green = 0, yellow = 1, orange = 2 and red = 3 or more. A red dot above a residue indicates a poor fit to the electron density ($RSRZ > 2$). Stretches of 2 or more consecutive residues without any outlier are shown as a green connector. Residues present in the sample, but not in the model, are shown in grey.

• Molecule 1: O-GLCNACASE NAGJ



• Molecule 1: O-GLCNACASE NAGJ





4 Data and refinement statistics

Property	Value	Source
Space group	I 21 21 21	Depositor
Cell constants a, b, c, α , β , γ	129.82Å 145.72Å 152.33Å 90.00° 90.00° 90.00°	Depositor
Resolution (Å)	29.95 – 2.31 29.94 – 2.31	Depositor EDS
% Data completeness (in resolution range)	100.0 (29.95-2.31) 94.6 (29.94-2.31)	Depositor EDS
R_{merge}	0.07	Depositor
R_{sym}	(Not available)	Depositor
$\langle I/\sigma(I) \rangle$ ¹	1.99 (at 2.31Å)	Xtriage
Refinement program	REFMAC 5.4.0073	Depositor
R, R_{free}	0.186 , 0.237 0.184 , 0.231	Depositor DCC
R_{free} test set	597 reflections (1.00%)	DCC
Wilson B-factor (Å ²)	35.9	Xtriage
Anisotropy	0.363	Xtriage
Bulk solvent k_{sol} (e/Å ³), B_{sol} (Å ²)	0.32 , 41.6	EDS
Estimated twinning fraction	0.015 for -h,-l,-k	Xtriage
L-test for twinning ²	$\langle L \rangle = 0.49$, $\langle L^2 \rangle = 0.32$	Xtriage
Outliers	0 of 60400 reflections	Xtriage
F_o, F_c correlation	0.96	EDS
Total number of atoms	9953	wwPDB-VP
Average B, all atoms (Å ²)	31.0	wwPDB-VP

Xtriage's analysis on translational NCS is as follows: *The largest off-origin peak in the Patterson function is 2.80% of the height of the origin peak. No significant pseudotranslation is detected.*

¹Intensities estimated from amplitudes.

²Theoretical values of $\langle |L| \rangle$, $\langle L^2 \rangle$ for acentric reflections are 0.5, 0.375 respectively for untwinned datasets, and 0.333, 0.2 for perfectly twinned datasets.

5 Model quality

5.1 Standard geometry

Bond lengths and bond angles in the following residue types are not validated in this section: NA, VGB, CL

The Z score for a bond length (or angle) is the number of standard deviations the observed value is removed from the expected value. A bond length (or angle) with $|Z| > 5$ is considered an outlier worth inspection. RMSZ is the root-mean-square of all Z scores of the bond lengths (or angles).

Mol	Chain	Bond lengths		Bond angles	
		RMSZ	$\# Z > 5$	RMSZ	$\# Z > 5$
1	A	0.73	4/4718 (0.1%)	0.75	3/6404 (0.0%)
1	B	0.68	1/4725 (0.0%)	0.71	2/6415 (0.0%)
All	All	0.70	5/9443 (0.1%)	0.73	5/12819 (0.0%)

Chiral center outliers are detected by calculating the chiral volume of a chiral center and verifying if the center is modelled as a planar moiety or with the opposite hand. A planarity outlier is detected by checking planarity of atoms in a peptide group, atoms in a mainchain group or atoms of a sidechain that are expected to be planar.

Mol	Chain	#Chirality outliers	#Planarity outliers
1	A	0	1
1	B	0	1
All	All	0	2

All (5) bond length outliers are listed below:

Mol	Chain	Res	Type	Atoms	Z	Observed(Å)	Ideal(Å)
1	A	101	SER	CB-OG	16.57	1.63	1.42
1	A	96	GLU	CD-OE1	9.92	1.36	1.25
1	A	140	GLY	C-O	-6.97	1.12	1.23
1	B	500	GLU	CD-OE1	5.98	1.32	1.25
1	A	115	GLU	CD-OE1	5.33	1.31	1.25

All (5) bond angle outliers are listed below:

Mol	Chain	Res	Type	Atoms	Z	Observed(°)	Ideal(°)
1	B	284	LEU	CA-CB-CG	-6.46	100.44	115.30
1	A	67	ASN	O-C-N	6.01	132.32	122.70
1	A	140	GLY	O-C-N	5.81	131.99	122.70
1	A	67	ASN	CB-CG-OD1	-5.42	110.76	121.60

Continued on next page...

Continued from previous page...

Mol	Chain	Res	Type	Atoms	Z	Observed(°)	Ideal(°)
1	B	42	LEU	N-CA-C	-5.35	96.57	111.00

There are no chirality outliers.

All (2) planarity outliers are listed below:

Mol	Chain	Res	Type	Group
1	A	99	PRO	Peptide
1	B	41	VAL	Peptide

5.2 Too-close contacts ⓘ

In the following table, the Non-H and H(model) columns list the number of non-hydrogen atoms and hydrogen atoms in the chain respectively. The H(added) column lists the number of hydrogen atoms added and optimized by MolProbity. The Clashes column lists the number of clashes within the asymmetric unit, whereas Symm-Clashes lists symmetry related clashes.

Mol	Chain	Non-H	H(model)	H(added)	Clashes	Symm-Clashes
1	A	4625	0	4410	205	0
1	B	4629	0	4418	136	0
2	A	2	0	0	3	0
2	B	3	0	0	0	0
3	A	1	0	0	0	0
4	A	26	0	26	2	0
4	B	26	0	26	0	0
5	A	280	0	0	5	0
5	B	361	0	0	5	1
All	All	9953	0	8880	339	1

The all-atom clashscore is defined as the number of clashes found per 1000 atoms (including hydrogen atoms). The all-atom clashscore for this structure is 19.

All (339) close contacts within the same asymmetric unit are listed below, sorted by their clash magnitude.

Atom-1	Atom-2	Interatomic distance (Å)	Clash overlap (Å)
1:A:101:SER:CB	1:A:101:SER:OG	1.63	1.45
1:A:99:PRO:HB3	1:A:100:ASN:OD1	1.25	1.27
1:A:99:PRO:CB	1:A:100:ASN:HB2	1.66	1.24
1:A:575:GLN:N	1:A:575:GLN:C	1.90	1.24
1:A:68:LEU:CD2	1:A:71:GLU:HG2	1.71	1.20

Continued on next page...

Continued from previous page...

Atom-1	Atom-2	Interatomic distance (Å)	Clash overlap (Å)
1:A:98:ASP:HB3	1:A:99:PRO:CA	1.70	1.17
1:B:389:ARG:HH11	1:B:389:ARG:HG2	1.10	1.16
1:A:80:ASN:O	1:A:84:GLU:HG3	1.47	1.14
1:B:126:GLU:N	1:B:127:ASN:HB3	1.63	1.12
1:B:126:GLU:CB	1:B:127:ASN:HB2	1.80	1.11
1:A:236:MET:HG3	1:A:287:MET:CE	1.82	1.09
1:A:98:ASP:HA	1:A:99:PRO:O	1.53	1.09
1:A:53:LEU:HD12	1:A:173:ILE:HD11	1.33	1.09
1:A:236:MET:HG3	1:A:287:MET:HE1	1.09	1.09
1:A:99:PRO:HB3	1:A:100:ASN:CG	1.76	1.06
1:B:41:VAL:HG23	1:B:42:LEU:HA	1.07	1.06
1:A:58:ASP:N	1:A:170:GLU:OE2	1.89	1.06
1:A:98:ASP:CB	1:A:99:PRO:HA	1.85	1.05
1:B:41:VAL:CG2	1:B:42:LEU:HA	1.87	1.04
1:B:41:VAL:HG12	1:B:169:PRO:CA	1.88	1.03
1:A:99:PRO:CB	1:A:100:ASN:CB	2.36	1.02
1:A:68:LEU:HD23	1:A:71:GLU:HG2	1.35	1.02
1:A:99:PRO:HB2	1:A:100:ASN:CB	1.89	1.01
1:B:126:GLU:HB2	1:B:127:ASN:HB2	1.05	1.01
1:A:108:GLU:OE1	1:A:111:ASP:OD1	1.78	1.01
1:A:94:ASN:ND2	1:A:101:SER:OG	1.93	1.01
1:B:41:VAL:HG12	1:B:169:PRO:CB	1.91	1.00
1:A:68:LEU:CD2	1:A:71:GLU:CG	2.40	1.00
1:B:40:GLN:HB2	1:B:58:ASP:O	1.60	0.99
1:B:40:GLN:HG2	1:B:41:VAL:HG22	1.41	0.99
1:A:165:GLU:O	1:A:166:SER:HB2	1.58	0.99
1:B:41:VAL:HG12	1:B:169:PRO:HA	1.41	0.98
1:B:126:GLU:HB2	1:B:127:ASN:CB	1.96	0.96
1:A:99:PRO:HB2	1:A:100:ASN:HB2	0.98	0.95
1:B:124:THR:OG1	1:B:126:GLU:HG3	1.66	0.94
1:A:68:LEU:HD21	1:A:71:GLU:HG2	1.48	0.94
1:A:98:ASP:HB3	1:A:99:PRO:HA	0.96	0.94
1:B:502:ARG:HD3	1:B:502:ARG:O	1.68	0.93
1:B:42:LEU:N	1:B:42:LEU:HD23	1.84	0.92
1:A:164:LYS:O	1:A:165:GLU:HB2	1.69	0.92
1:A:98:ASP:CB	1:A:99:PRO:CA	2.40	0.91
1:A:72:GLU:HA	1:A:72:GLU:OE1	1.71	0.90
1:A:109:VAL:HG12	1:A:145:GLU:OE2	1.72	0.89
1:A:110:ASP:O	1:A:111:ASP:O	1.90	0.89
1:A:76:GLU:O	1:A:80:ASN:ND2	2.06	0.88
1:A:57:GLY:HA3	1:A:170:GLU:OE2	1.74	0.88

Continued on next page...

Continued from previous page...

Atom-1	Atom-2	Interatomic distance (Å)	Clash overlap (Å)
1:B:126:GLU:N	1:B:127:ASN:CB	2.37	0.87
1:A:57:GLY:CA	1:A:170:GLU:OE2	2.22	0.87
1:A:597:ALA:O	2:A:1625:CL:CL	2.30	0.87
1:B:57:GLY:HA3	1:B:170:GLU:OE2	1.75	0.86
1:A:236:MET:CG	1:A:287:MET:HE1	2.00	0.85
1:B:41:VAL:C	1:B:43:VAL:H	1.78	0.85
1:A:502:ARG:O	1:A:502:ARG:HD3	1.76	0.85
1:A:118:GLU:HB2	5:A:2033:HOH:O	1.75	0.85
1:A:99:PRO:C	1:A:101:SER:H	1.80	0.84
1:B:124:THR:OG1	1:B:126:GLU:CG	2.25	0.83
1:A:99:PRO:O	1:A:101:SER:N	2.11	0.83
1:B:389:ARG:NH1	1:B:389:ARG:HG2	1.86	0.83
1:A:53:LEU:CD1	1:A:173:ILE:HD11	2.08	0.83
1:A:95:SER:O	1:A:96:GLU:HG3	1.79	0.83
1:B:59:GLY:HA2	1:B:170:GLU:HG3	1.60	0.83
1:A:80:ASN:O	1:A:84:GLU:CG	2.26	0.82
1:A:110:ASP:O	1:A:111:ASP:C	2.16	0.82
1:B:41:VAL:HG23	1:B:42:LEU:CA	2.02	0.82
1:B:126:GLU:CA	1:B:127:ASN:CB	2.57	0.82
1:A:110:ASP:C	1:A:111:ASP:O	2.13	0.82
1:A:99:PRO:HB3	1:A:100:ASN:CB	2.06	0.82
1:A:575:GLN:N	1:A:576:LEU:N	2.28	0.81
1:A:68:LEU:HD21	1:A:71:GLU:CG	2.06	0.81
1:B:41:VAL:HG12	1:B:169:PRO:HB3	1.62	0.81
1:A:575:GLN:CG	1:A:575:GLN:OE1	2.31	0.79
1:A:98:ASP:CA	1:A:99:PRO:O	2.33	0.77
1:A:57:GLY:C	1:A:170:GLU:OE2	2.22	0.77
1:A:41:VAL:HG13	1:A:58:ASP:O	1.85	0.76
1:A:232:PRO:HD2	1:A:235:GLU:HG3	1.70	0.74
1:A:53:LEU:HD12	1:A:173:ILE:CD1	2.15	0.74
1:B:40:GLN:CG	1:B:41:VAL:HG22	2.18	0.74
1:A:123:THR:HG23	1:A:172:ASN:HD21	1.52	0.73
1:A:133:TYR:CE2	1:A:175:ASP:HB3	2.24	0.73
1:A:164:LYS:HD3	1:A:165:GLU:HG2	1.71	0.72
1:A:602:ALA:O	2:A:1625:CL:CL	2.45	0.72
1:A:123:THR:CG2	1:A:172:ASN:HD21	2.02	0.72
1:A:41:VAL:CG1	1:A:58:ASP:O	2.39	0.71
1:A:164:LYS:O	1:A:165:GLU:CB	2.38	0.71
1:A:72:GLU:CA	1:A:72:GLU:OE1	2.37	0.71
1:A:98:ASP:CB	1:A:99:PRO:C	2.58	0.71
1:B:231:TYR:CD1	1:B:235:GLU:HG2	2.25	0.70

Continued on next page...

Continued from previous page...

Atom-1	Atom-2	Interatomic distance (Å)	Clash overlap (Å)
1:B:502:ARG:HD3	1:B:502:ARG:C	2.07	0.70
1:B:237:GLN:OE1	1:B:237:GLN:HA	1.90	0.70
1:A:66:ILE:HG22	1:A:102:THR:HB	1.72	0.70
1:B:165:GLU:O	1:B:166:SER:HB2	1.92	0.70
1:A:331:VAL:HG12	1:A:364:MET:HB2	1.74	0.70
1:B:531:ARG:HD2	1:B:531:ARG:O	1.92	0.70
1:B:126:GLU:CA	1:B:127:ASN:HB2	2.22	0.70
1:A:99:PRO:CB	1:A:100:ASN:OD1	2.22	0.69
1:A:238:ARG:NH2	5:A:2082:HOH:O	2.24	0.69
1:A:107:GLY:O	1:A:145:GLU:HA	1.91	0.69
1:A:255:PHE:CD1	1:A:284:LEU:HD22	2.27	0.69
1:B:295:TYR:CD2	1:B:331:VAL:HG12	2.27	0.69
1:B:41:VAL:CG1	1:B:169:PRO:HB3	2.21	0.68
1:A:133:TYR:HA	1:A:146:GLY:HA2	1.75	0.68
1:B:387:TYR:O	1:B:389:ARG:NH1	2.27	0.68
1:A:62:ILE:HG12	1:A:102:THR:HG21	1.77	0.67
1:A:98:ASP:OD1	1:A:99:PRO:C	2.32	0.67
1:A:123:THR:HG21	1:A:172:ASN:ND2	2.10	0.66
1:A:98:ASP:CA	1:A:99:PRO:C	2.62	0.66
1:A:521:LEU:O	1:A:521:LEU:HD12	1.95	0.66
1:B:231:TYR:HD1	1:B:235:GLU:HG2	1.59	0.66
1:B:42:LEU:N	1:B:42:LEU:CD2	2.55	0.66
1:B:156:VAL:O	1:B:160:LYS:HG3	1.97	0.65
1:A:123:THR:CG2	1:A:172:ASN:ND2	2.60	0.65
1:A:420:ASN:H	1:A:420:ASN:HD22	1.42	0.65
1:A:98:ASP:CG	1:A:99:PRO:C	2.55	0.64
1:B:285:TYR:CE2	1:B:322:LYS:HE2	2.33	0.64
1:A:68:LEU:HD23	1:A:71:GLU:CG	2.15	0.64
1:B:318:PHE:O	1:B:322:LYS:HB2	1.98	0.64
1:A:51:GLU:N	1:A:175:ASP:OD1	2.26	0.64
1:A:387:TYR:HB3	1:A:389:ARG:HD2	1.79	0.64
1:B:364:MET:HA	1:B:392:ALA:O	1.97	0.64
1:B:487:ASN:HD21	1:B:491:ALA:H	1.45	0.64
1:B:114:PRO:HA	1:B:117:ASP:OD2	1.98	0.63
1:A:138:ASN:O	1:A:141:LYS:N	2.30	0.63
1:B:41:VAL:CB	1:B:169:PRO:HB3	2.28	0.63
1:B:41:VAL:C	1:B:43:VAL:N	2.47	0.63
1:B:235:GLU:HG3	1:B:235:GLU:O	1.99	0.62
1:B:66:ILE:HG22	1:B:102:THR:HB	1.81	0.62
1:B:41:VAL:CG1	1:B:169:PRO:CB	2.71	0.62
1:B:139:ASP:OD2	1:B:139:ASP:O	2.17	0.62

Continued on next page...

Continued from previous page...

Atom-1	Atom-2	Interatomic distance (Å)	Clash overlap (Å)
1:A:108:GLU:HB2	1:A:111:ASP:OD1	1.99	0.62
1:A:502:ARG:C	1:A:502:ARG:HD3	2.13	0.62
1:B:313:ARG:HD3	1:B:317:GLU:OE2	2.00	0.61
1:A:56:VAL:HG23	1:A:56:VAL:O	2.00	0.61
1:A:104:LEU:HD23	1:A:105:ILE:N	2.16	0.61
1:A:416:ASP:HB3	1:A:419:LEU:HD13	1.82	0.61
1:A:101:SER:CB	1:A:101:SER:HG	2.07	0.61
1:A:387:TYR:O	1:A:389:ARG:HD2	2.00	0.60
1:A:183:GLY:C	1:A:184:ILE:HD12	2.21	0.60
1:B:384:SER:O	1:B:388:ASP:HA	2.01	0.60
1:B:500:GLU:H	1:B:500:GLU:CD	2.03	0.60
1:A:129:LYS:HD2	1:A:176:TYR:CD1	2.37	0.60
1:A:113:ILE:HG22	1:A:116:LEU:H	1.67	0.60
1:A:68:LEU:CD2	1:A:71:GLU:HG3	2.31	0.60
1:A:236:MET:CG	1:A:287:MET:CE	2.68	0.59
1:B:420:ASN:H	1:B:420:ASN:HD22	1.50	0.59
1:B:98:ASP:C	1:B:98:ASP:OD1	2.40	0.59
1:B:41:VAL:CB	1:B:42:LEU:HA	2.33	0.59
1:A:129:LYS:HD2	1:A:176:TYR:HD1	1.66	0.59
1:B:239:MET:O	1:B:243:ILE:HD12	2.03	0.59
1:A:72:GLU:HB2	1:A:73:GLU:OE2	2.02	0.59
1:A:40:GLN:N	1:A:41:VAL:HA	2.18	0.59
1:B:387:TYR:O	1:B:389:ARG:HG2	2.03	0.59
1:A:50:PRO:HA	1:A:175:ASP:OD1	2.03	0.58
1:A:98:ASP:OD1	1:A:100:ASN:N	2.36	0.58
1:B:124:THR:HG1	1:B:126:GLU:HG3	1.66	0.58
1:B:53:LEU:HD12	1:B:173:ILE:HG12	1.85	0.58
1:B:61:LYS:HE2	1:B:166:SER:CB	2.34	0.58
1:B:126:GLU:CA	1:B:127:ASN:HB3	2.27	0.57
1:A:183:GLY:HA3	1:A:212:THR:O	2.04	0.57
1:B:126:GLU:H	1:B:127:ASN:HB3	1.60	0.57
1:A:138:ASN:O	1:A:139:ASP:C	2.41	0.57
1:A:57:GLY:HA3	1:A:170:GLU:CB	2.35	0.57
1:B:233:GLU:HG2	5:B:2090:HOH:O	2.05	0.57
1:A:104:LEU:HD23	1:A:105:ILE:H	1.70	0.56
1:A:404:LYS:HE3	5:B:2358:HOH:O	2.04	0.56
1:A:185:VAL:O	1:A:185:VAL:HG13	2.06	0.56
1:A:98:ASP:OD1	1:A:99:PRO:O	2.24	0.56
1:B:53:LEU:HD12	1:B:173:ILE:CG1	2.36	0.55
1:B:487:ASN:ND2	1:B:491:ALA:H	2.04	0.55
1:B:417:LYS:HE3	1:B:454:TYR:N	2.21	0.55

Continued on next page...

Continued from previous page...

Atom-1	Atom-2	Interatomic distance (Å)	Clash overlap (Å)
1:A:518:ALA:O	1:A:522:ILE:HG13	2.06	0.55
1:A:274:PHE:CE1	1:A:313:ARG:HB3	2.42	0.55
1:B:124:THR:OG1	1:B:126:GLU:HG2	2.05	0.55
1:B:47:ASN:HD21	1:B:446:ASP:HB2	1.72	0.55
1:B:41:VAL:CG1	1:B:169:PRO:HA	2.27	0.55
1:B:235:GLU:HB2	5:B:2092:HOH:O	2.06	0.55
1:A:337:THR:HB	1:A:368:PRO:HA	1.87	0.55
1:A:51:GLU:HG2	1:A:176:TYR:CZ	2.43	0.54
1:B:420:ASN:N	1:B:420:ASN:HD22	2.05	0.54
1:B:233:GLU:O	1:B:236:MET:HB2	2.07	0.54
1:A:502:ARG:NH2	1:A:615:GLU:OE2	2.41	0.54
1:B:82:LEU:HD21	1:B:104:LEU:HD22	1.89	0.54
1:B:69:VAL:HB	1:B:105:ILE:HG23	1.90	0.54
1:A:624:ILE:HD12	1:B:224:ARG:HH21	1.72	0.54
1:A:128:LEU:O	1:A:147:LYS:HD2	2.07	0.54
1:B:154:TYR:CE1	1:B:209:LYS:HA	2.43	0.53
1:A:619:PHE:CD2	1:A:621:LEU:HD22	2.43	0.53
1:A:411:PRO:HD3	1:A:460:TRP:CD1	2.43	0.53
1:A:41:VAL:HG22	1:A:41:VAL:O	2.07	0.53
1:A:165:GLU:O	1:A:166:SER:CB	2.41	0.53
1:A:118:GLU:O	1:A:121:ASN:HB2	2.07	0.53
1:A:255:PHE:CG	1:A:284:LEU:HD22	2.44	0.53
1:B:126:GLU:H	1:B:127:ASN:CB	2.20	0.52
1:B:42:LEU:H	1:B:42:LEU:HD23	1.69	0.52
1:A:73:GLU:N	1:A:73:GLU:OE2	2.43	0.52
1:B:420:ASN:ND2	5:B:2190:HOH:O	2.41	0.52
1:B:98:ASP:OD1	1:B:100:ASN:N	2.38	0.52
1:A:66:ILE:HG22	1:A:102:THR:CB	2.38	0.52
1:A:420:ASN:N	1:A:420:ASN:HD22	2.05	0.52
1:A:274:PHE:CZ	1:A:313:ARG:HD2	2.45	0.52
1:A:61:LYS:HG3	1:A:166:SER:HB3	1.91	0.52
1:A:112:ASP:OD1	1:A:112:ASP:C	2.48	0.52
1:A:278:ILE:O	1:A:279:THR:C	2.48	0.51
1:B:416:ASP:HB3	1:B:419:LEU:HD13	1.92	0.51
1:A:113:ILE:HG22	1:A:116:LEU:HB2	1.92	0.51
1:B:330:THR:O	1:B:364:MET:HG3	2.11	0.50
1:A:113:ILE:CG2	1:A:116:LEU:H	2.24	0.50
1:A:52:ASN:O	1:A:173:ILE:HA	2.12	0.50
1:A:223:HIS:HD2	1:A:256:GLY:O	1.95	0.50
1:A:57:GLY:CA	1:A:170:GLU:HB2	2.42	0.50
1:B:62:ILE:HG12	1:B:102:THR:HG21	1.94	0.50

Continued on next page...

Continued from previous page...

Atom-1	Atom-2	Interatomic distance (Å)	Clash overlap (Å)
1:A:68:LEU:CG	1:A:71:GLU:HG3	2.42	0.49
1:A:600:SER:O	2:A:1625:CL:CL	2.67	0.49
1:A:295:TYR:CD2	1:A:331:VAL:HG22	2.46	0.49
1:A:210:LEU:HD21	1:A:445:ALA:HA	1.94	0.49
1:A:68:LEU:CG	1:A:71:GLU:CG	2.90	0.49
1:A:135:LEU:HA	1:A:143:ALA:O	2.12	0.49
1:B:185:VAL:HG13	1:B:185:VAL:O	2.12	0.49
1:B:82:LEU:HG	1:B:86:LEU:HD22	1.95	0.49
1:A:342:SER:O	1:A:343:ASN:CB	2.60	0.49
1:B:368:PRO:HD2	1:B:372:THR:HG21	1.94	0.49
1:A:68:LEU:HG	1:A:71:GLU:HG3	1.95	0.49
1:B:331:VAL:O	1:B:331:VAL:HG13	2.13	0.49
1:B:183:GLY:C	1:B:184:ILE:HD12	2.34	0.49
1:A:216:ALA:N	1:A:217:PRO:CD	2.76	0.49
1:B:474:ASP:OD1	1:B:531:ARG:NH1	2.46	0.48
1:B:135:LEU:HA	1:B:143:ALA:O	2.13	0.48
1:A:160:LYS:HE3	5:A:2018:HOH:O	2.13	0.48
1:A:116:LEU:HD21	1:A:145:GLU:HB3	1.95	0.48
1:A:144:ILE:O	1:A:144:ILE:HG22	2.12	0.48
1:A:68:LEU:HD21	1:A:71:GLU:HG3	1.89	0.48
1:B:568:SER:HA	1:B:571:MET:HE2	1.96	0.48
1:B:398:PRO:HD2	1:B:430:PRO:HA	1.95	0.48
1:B:406:LYS:NZ	1:B:497:ASP:OD2	2.44	0.48
1:B:326:LYS:HB3	1:B:327:PRO:HD2	1.95	0.48
1:A:119:ALA:HB1	1:A:143:ALA:HB2	1.95	0.47
1:B:116:LEU:O	1:B:120:LEU:HG	2.14	0.47
1:B:41:VAL:HB	1:B:169:PRO:HB3	1.95	0.47
1:B:610:GLN:NE2	5:B:2347:HOH:O	2.46	0.47
1:A:114:PRO:HD2	1:A:115:GLU:OE2	2.13	0.47
1:A:129:LYS:CD	1:A:176:TYR:HD1	2.27	0.47
1:B:105:ILE:N	1:B:105:ILE:HD12	2.30	0.47
1:B:65:SER:HA	1:B:92:GLU:O	2.14	0.47
1:B:51:GLU:HG2	1:B:176:TYR:CZ	2.50	0.47
1:A:108:GLU:CD	1:A:111:ASP:OD1	2.49	0.47
1:A:126:GLU:O	1:A:147:LYS:NZ	2.47	0.47
1:B:177:PRO:HB3	1:B:449:TRP:CE3	2.50	0.47
1:A:51:GLU:HG2	1:A:176:TYR:CE2	2.49	0.46
1:A:63:THR:C	1:A:65:SER:H	2.19	0.46
1:A:87:THR:O	1:A:89:ASN:N	2.47	0.46
1:A:487:ASN:O	1:A:488:LYS:HB2	2.15	0.46
1:A:98:ASP:CG	1:A:100:ASN:N	2.69	0.46

Continued on next page...

Continued from previous page...

Atom-1	Atom-2	Interatomic distance (Å)	Clash overlap (Å)
1:B:41:VAL:CB	1:B:42:LEU:CA	2.93	0.46
1:A:223:HIS:CD2	1:A:256:GLY:O	2.68	0.46
1:A:57:GLY:HA3	1:A:170:GLU:HB2	1.98	0.46
1:B:130:GLU:O	1:B:131:GLU:HB2	2.15	0.46
1:A:109:VAL:O	1:A:111:ASP:O	2.34	0.46
1:B:337:THR:HB	1:B:368:PRO:HA	1.97	0.46
1:A:295:TYR:CE2	1:A:331:VAL:HG13	2.51	0.45
1:A:82:LEU:HG	1:A:86:LEU:HD22	1.98	0.45
1:B:47:ASN:ND2	1:B:446:ASP:HB2	2.32	0.45
1:A:63:THR:C	1:A:65:SER:N	2.69	0.45
1:B:297:ASP:O	1:B:298:ASP:HB2	2.17	0.45
1:A:154:TYR:HB3	1:A:209:LYS:HD3	1.98	0.45
1:A:624:ILE:O	1:A:624:ILE:CG2	2.65	0.45
1:B:164:LYS:HA	1:B:164:LYS:HD3	1.87	0.45
1:B:387:TYR:O	1:B:388:ASP:C	2.55	0.45
1:A:184:ILE:HD12	1:A:184:ILE:N	2.32	0.45
1:B:97:ASN:C	1:B:97:ASN:OD1	2.55	0.44
1:A:59:GLY:H	1:A:170:GLU:CD	2.21	0.44
1:A:133:TYR:HB3	1:A:151:GLY:O	2.17	0.44
1:A:50:PRO:HA	1:A:175:ASP:CG	2.37	0.44
1:A:521:LEU:C	1:A:521:LEU:HD12	2.38	0.44
1:B:125:ALA:C	1:B:127:ASN:HB3	2.32	0.44
1:A:57:GLY:HA3	1:A:170:GLU:CD	2.37	0.44
1:A:52:ASN:HB2	1:A:174:THR:OG1	2.18	0.43
1:A:164:LYS:CD	1:A:165:GLU:HG2	2.44	0.43
1:A:85:PHE:CD1	1:A:160:LYS:HG2	2.53	0.43
1:A:145:GLU:O	1:A:145:GLU:HG3	2.17	0.43
1:A:198:ARG:O	1:A:202:ILE:HG13	2.19	0.43
1:A:370:VAL:HG11	4:A:1628:VGB:CAQ	2.49	0.43
1:B:98:ASP:OD1	1:B:99:PRO:N	2.51	0.43
1:A:53:LEU:O	1:A:54:GLU:HG3	2.19	0.43
1:A:335:TYR:CD2	4:A:1628:VGB:HBAA	2.53	0.43
1:A:183:GLY:O	1:A:427:THR:HA	2.19	0.43
1:A:112:ASP:O	1:A:112:ASP:OD1	2.36	0.43
1:B:220:ASP:OD2	1:B:220:ASP:C	2.56	0.43
1:B:201:GLN:HB3	1:B:205:TYR:CZ	2.54	0.43
1:A:394:TRP:CD1	1:A:394:TRP:C	2.92	0.43
1:B:274:PHE:CZ	1:B:313:ARG:HD2	2.54	0.43
1:B:326:LYS:HB3	1:B:327:PRO:CD	2.49	0.43
1:A:284:LEU:O	1:A:289:VAL:HB	2.19	0.42
1:A:97:ASN:HB3	1:A:98:ASP:H	1.34	0.42

Continued on next page...

Continued from previous page...

Atom-1	Atom-2	Interatomic distance (Å)	Clash overlap (Å)
1:A:274:PHE:O	1:A:277:LEU:HB2	2.18	0.42
1:A:236:MET:HG3	1:A:287:MET:HE3	1.91	0.42
1:A:184:ILE:N	1:A:184:ILE:CD1	2.83	0.42
1:A:557:GLU:CG	1:A:604:ILE:HG22	2.50	0.42
1:B:56:VAL:HG11	1:B:172:ASN:ND2	2.34	0.42
1:A:577:ASN:O	1:A:578:GLU:C	2.58	0.42
1:B:389:ARG:NH1	1:B:389:ARG:CG	2.65	0.42
1:A:57:GLY:C	1:A:170:GLU:HB2	2.40	0.42
1:A:99:PRO:C	1:A:101:SER:N	2.46	0.42
1:B:315:ASN:O	1:B:319:VAL:HB	2.19	0.42
1:B:227:TRP:O	1:B:280:LYS:NZ	2.48	0.42
1:B:94:ASN:HB3	1:B:96:GLU:O	2.20	0.42
1:A:557:GLU:HG3	1:A:604:ILE:HG22	2.02	0.42
1:A:115:GLU:O	1:A:119:ALA:HB2	2.19	0.42
1:B:126:GLU:CB	1:B:127:ASN:CB	2.62	0.41
1:B:227:TRP:CD1	1:B:259:PRO:HA	2.54	0.41
1:B:77:ASN:HB2	1:B:250:LYS:HE2	2.01	0.41
1:B:40:GLN:HE21	1:B:40:GLN:HB3	1.61	0.41
1:A:577:ASN:N	1:A:577:ASN:OD1	2.52	0.41
1:A:71:GLU:H	1:A:71:GLU:CD	2.20	0.41
1:B:222:TYR:HB2	1:B:231:TYR:CE1	2.55	0.41
1:B:112:ASP:C	1:B:113:ILE:HG12	2.39	0.41
1:A:460:TRP:HH2	1:A:480:ASN:HB2	1.85	0.41
1:A:97:ASN:O	1:A:98:ASP:O	2.38	0.41
1:A:116:LEU:O	1:A:119:ALA:HB3	2.21	0.41
1:B:417:LYS:O	1:B:451:MET:HG2	2.20	0.41
1:A:624:ILE:HB	1:B:189:TYR:HE2	1.86	0.41
1:B:168:ILE:HG12	1:B:169:PRO:HD2	2.02	0.41
1:B:561:LEU:HD21	1:B:597:ALA:CB	2.50	0.41
1:A:614:GLN:HB3	5:A:2277:HOH:O	2.20	0.41
1:A:188:PHE:CZ	1:A:432:GLU:HA	2.56	0.41
1:A:201:GLN:HB3	1:A:205:TYR:CZ	2.56	0.41
1:B:61:LYS:HD3	1:B:62:ILE:N	2.36	0.41
1:B:216:ALA:N	1:B:217:PRO:HD3	2.36	0.41
1:B:411:PRO:HB3	1:B:460:TRP:HB2	2.03	0.41
1:A:110:ASP:HB2	1:A:111:ASP:H	1.59	0.40
1:B:320:LYS:C	1:B:322:LYS:N	2.73	0.40
1:B:359:PRO:HA	1:B:389:ARG:NH2	2.36	0.40
1:A:293:ALA:HA	1:A:329:ILE:O	2.20	0.40
1:A:156:VAL:HG12	1:A:160:LYS:HD2	2.02	0.40
1:A:593:LYS:HD3	5:A:2268:HOH:O	2.22	0.40

Continued on next page...

Continued from previous page...

Atom-1	Atom-2	Interatomic distance (Å)	Clash overlap (Å)
1:A:77:ASN:HB2	1:A:250:LYS:HE3	2.04	0.40
1:B:480:ASN:OD1	1:B:495:ARG:NH2	2.52	0.40
1:A:43:VAL:HA	1:A:44:PRO:HD3	1.79	0.40
1:A:115:GLU:O	1:A:119:ALA:CB	2.70	0.40
1:A:66:ILE:CG2	1:A:102:THR:HB	2.47	0.40
1:B:274:PHE:CE2	1:B:313:ARG:HD2	2.57	0.40

All (1) symmetry-related close contacts are listed below. The label for Atom-2 includes the symmetry operator and encoded unit-cell translations to be applied.

Atom-1	Atom-2	Interatomic distance (Å)	Clash overlap (Å)
5:B:2264:HOH:O	5:B:2264:HOH:O[7_555]	1.87	0.33

5.3 Torsion angles [i](#)

5.3.1 Protein backbone [i](#)

In the following table, the Percentiles column shows the percent Ramachandran outliers of the chain as a percentile score with respect to all X-ray entries followed by that with respect to entries of similar resolution.

The Analysed column shows the number of residues for which the backbone conformation was analysed, and the total number of residues.

Mol	Chain	Analysed	Favoured	Allowed	Outliers	Percentiles	
1	A	582/594 (98%)	532 (91%)	37 (6%)	13 (2%)	8	6
1	B	583/594 (98%)	553 (95%)	24 (4%)	6 (1%)	19	20
All	All	1165/1188 (98%)	1085 (93%)	61 (5%)	19 (2%)	12	10

All (19) Ramachandran outliers are listed below:

Mol	Chain	Res	Type
1	A	97	ASN
1	A	98	ASP
1	A	100	ASN
1	A	111	ASP
1	B	388	ASP
1	A	88	ALA
1	A	110	ASP

Continued on next page...

Continued from previous page...

Mol	Chain	Res	Type
1	A	166	SER
1	B	127	ASN
1	B	232	PRO
1	A	139	ASP
1	B	139	ASP
1	A	64	SER
1	B	43	VAL
1	A	87	THR
1	A	108	GLU
1	B	608	VAL
1	A	114	PRO
1	A	99	PRO

5.3.2 Protein sidechains ⓘ

In the following table, the Percentiles column shows the percent sidechain outliers of the chain as a percentile score with respect to all X-ray entries followed by that with respect to entries of similar resolution.

The Analysed column shows the number of residues for which the sidechain conformation was analysed, and the total number of residues.

Mol	Chain	Analysed	Rotameric	Outliers	Percentiles	
1	A	499/507 (98%)	461 (92%)	38 (8%)	16	20
1	B	500/507 (99%)	471 (94%)	29 (6%)	25	33
All	All	999/1014 (98%)	932 (93%)	67 (7%)	20	26

All (67) residues with a non-rotameric sidechain are listed below:

Mol	Chain	Res	Type
1	A	41	VAL
1	A	65	SER
1	A	71	GLU
1	A	72	GLU
1	A	76	GLU
1	A	86	LEU
1	A	95	SER
1	A	96	GLU
1	A	112	ASP
1	A	113	ILE
1	A	118	GLU

Continued on next page...

Continued from previous page...

Mol	Chain	Res	Type
1	A	129	LYS
1	A	138	ASN
1	A	160	LYS
1	A	166	SER
1	A	235	GLU
1	A	237	GLN
1	A	264	ARG
1	A	272	GLU
1	A	284	LEU
1	A	313	ARG
1	A	328	LEU
1	A	343	ASN
1	A	355	GLU
1	A	365	TRP
1	A	372	THR
1	A	389	ARG
1	A	394	TRP
1	A	409	LEU
1	A	420	ASN
1	A	521	LEU
1	A	555	LEU
1	A	556	ASP
1	A	577	ASN
1	A	592	ASN
1	A	607	LYS
1	A	621	LEU
1	A	623	LEU
1	B	40	GLN
1	B	42	LEU
1	B	53	LEU
1	B	86	LEU
1	B	105	ILE
1	B	110	ASP
1	B	113	ILE
1	B	121	ASN
1	B	139	ASP
1	B	233	GLU
1	B	280	LYS
1	B	284	LEU
1	B	313	ARG
1	B	328	LEU
1	B	365	TRP

Continued on next page...

Continued from previous page...

Mol	Chain	Res	Type
1	B	376	PRO
1	B	388	ASP
1	B	389	ARG
1	B	394	TRP
1	B	409	LEU
1	B	420	ASN
1	B	487	ASN
1	B	500	GLU
1	B	502	ARG
1	B	545	GLU
1	B	549	GLU
1	B	580	THR
1	B	581	GLU
1	B	619	PHE

Some sidechains can be flipped to improve hydrogen bonding and reduce clashes. All (18) such sidechains are listed below:

Mol	Chain	Res	Type
1	A	67	ASN
1	A	80	ASN
1	A	94	ASN
1	A	172	ASN
1	A	201	GLN
1	A	223	HIS
1	A	309	GLN
1	A	390	ASN
1	A	420	ASN
1	A	610	GLN
1	B	40	GLN
1	B	47	ASN
1	B	121	ASN
1	B	345	GLN
1	B	420	ASN
1	B	487	ASN
1	B	610	GLN
1	B	614	GLN

5.3.3 RNA ⓘ

There are no RNA molecules in this entry.

5.4 Non-standard residues in protein, DNA, RNA chains [i](#)

There are no non-standard protein/DNA/RNA residues in this entry.

5.5 Carbohydrates [i](#)

There are no carbohydrates in this entry.

5.6 Ligand geometry [i](#)

Of 8 ligands modelled in this entry, 6 are monoatomic - leaving 2 for Mogul analysis.

In the following table, the Counts columns list the number of bonds (or angles) for which Mogul statistics could be retrieved, the number of bonds (or angles) that are observed in the model and the number of bonds (or angles) that are defined in the chemical component dictionary. The Link column lists molecule types, if any, to which the group is linked. The Z score for a bond length (or angle) is the number of standard deviations the observed value is removed from the expected value. A bond length (or angle) with $|Z| > 2$ is considered an outlier worth inspection. RMSZ is the root-mean-square of all Z scores of the bond lengths (or angles).

Mol	Type	Chain	Res	Link	Bond lengths			Bond angles		
					Counts	RMSZ	# $ Z > 2$	Counts	RMSZ	# $ Z > 2$
4	VGB	A	1628	-	23,28,28	1.18	1 (4%)	23,39,39	1.49	4 (17%)
4	VGB	B	1628	-	23,28,28	1.28	2 (8%)	23,39,39	1.55	3 (13%)

In the following table, the Chirals column lists the number of chiral outliers, the number of chiral centers analysed, the number of these observed in the model and the number defined in the chemical component dictionary. Similar counts are reported in the Torsion and Rings columns. '-' means no outliers of that kind were identified.

Mol	Type	Chain	Res	Link	Chirals	Torsions	Rings
4	VGB	A	1628	-	-	0/12/33/33	0/2/3/3
4	VGB	B	1628	-	-	0/12/33/33	0/2/3/3

All (3) bond length outliers are listed below:

Mol	Chain	Res	Type	Atoms	Z	Observed(Å)	Ideal(Å)
4	A	1628	VGB	CAQ-NAE	-4.20	1.31	1.38
4	B	1628	VGB	CAQ-NAE	-3.52	1.32	1.38
4	B	1628	VGB	CAR-CAP	2.05	1.55	1.51

All (7) bond angle outliers are listed below:

Mol	Chain	Res	Type	Atoms	Z	Observed(°)	Ideal(°)
4	B	1628	VGB	CAR-CAP-CAQ	-4.56	122.51	129.55
4	A	1628	VGB	CAQ-NAE-CAD	-3.62	107.08	109.31
4	B	1628	VGB	CAQ-NAE-CAD	-2.92	107.52	109.31
4	A	1628	VGB	CAB-CAA-CAF	-2.83	107.58	111.39
4	A	1628	VGB	CAN-CAL-NAK	-2.38	112.04	115.56
4	B	1628	VGB	CAS-CAR-CAP	2.10	116.56	112.53
4	A	1628	VGB	CAI-CAF-CAA	2.55	117.33	112.50

There are no chirality outliers.

There are no torsion outliers.

There are no ring outliers.

1 monomer is involved in 2 short contacts:

Mol	Chain	Res	Type	Clashes	Symm-Clashes
4	A	1628	VGB	2	0

5.7 Other polymers [i](#)

There are no such residues in this entry.

5.8 Polymer linkage issues [i](#)

There are no chain breaks in this entry.

6 Fit of model and data

6.1 Protein, DNA and RNA chains

In the following table, the column labelled ‘#RSRZ> 2’ contains the number (and percentage) of RSRZ outliers, followed by percent RSRZ outliers for the chain as percentile scores relative to all X-ray entries and entries of similar resolution. The OWAB column contains the minimum, median, 95th percentile and maximum values of the occupancy-weighted average B-factor per residue. The column labelled ‘Q< 0.9’ lists the number of (and percentage) of residues with an average occupancy less than 0.9.

Mol	Chain	Analysed	<RSRZ>	#RSRZ>2	OWAB(Å ²)	Q<0.9
1	A	585/594 (98%)	0.18	32 (5%) 29 37	17, 30, 42, 53	0
1	B	585/594 (98%)	-0.04	21 (3%) 46 55	19, 30, 44, 50	0
All	All	1170/1188 (98%)	0.07	53 (4%) 37 46	17, 30, 43, 53	0

All (53) RSRZ outliers are listed below:

Mol	Chain	Res	Type	RSRZ
1	B	41	VAL	4.9
1	A	93	ILE	4.6
1	B	42	LEU	4.0
1	A	185	VAL	3.7
1	A	42	LEU	3.6
1	A	57	GLY	3.4
1	B	93	ILE	3.4
1	A	110	ASP	3.3
1	A	321	ALA	3.3
1	B	185	VAL	3.3
1	A	112	ASP	3.2
1	A	138	ASN	3.2
1	A	184	ILE	3.0
1	A	214	ILE	3.0
1	A	118	GLU	3.0
1	A	126	GLU	2.9
1	A	427	THR	2.9
1	B	112	ASP	2.8
1	B	428	VAL	2.8
1	B	295	TYR	2.8
1	A	331	VAL	2.8
1	B	96	GLU	2.8
1	A	40	GLN	2.7
1	B	394	TRP	2.6

Continued on next page...

Continued from previous page...

Mol	Chain	Res	Type	RSRZ
1	A	183	GLY	2.6
1	B	343	ASN	2.6
1	B	364	MET	2.6
1	A	210	LEU	2.5
1	A	316	GLU	2.5
1	A	107	GLY	2.4
1	A	128	LEU	2.4
1	A	41	VAL	2.4
1	A	295	TYR	2.4
1	A	517	ASP	2.4
1	A	127	ASN	2.4
1	B	214	ILE	2.4
1	A	398	PRO	2.4
1	B	293	ALA	2.3
1	A	428	VAL	2.3
1	B	427	THR	2.2
1	B	624	ILE	2.2
1	A	172	ASN	2.2
1	B	294	ILE	2.1
1	B	92	GLU	2.0
1	B	393	VAL	2.1
1	A	164	LYS	2.0
1	A	332	PRO	2.0
1	B	331	VAL	2.0
1	A	268	ASP	2.0
1	B	445	ALA	2.0
1	A	99	PRO	2.0
1	A	111	ASP	2.0
1	B	95	SER	2.0

6.2 Non-standard residues in protein, DNA, RNA chains ⓘ

There are no non-standard protein/DNA/RNA residues in this entry.

6.3 Carbohydrates ⓘ

There are no carbohydrates in this entry.

6.4 Ligands [i](#)

In the following table, the Atoms column lists the number of modelled atoms in the group and the number defined in the chemical component dictionary. LLDF column lists the quality of electron density of the group with respect to its neighbouring residues in protein, DNA or RNA chains. The B-factors column lists the minimum, median, 95th percentile and maximum values of B factors of atoms in the group. The column labelled 'Q< 0.9' lists the number of atoms with occupancy less than 0.9.

Mol	Type	Chain	Res	Atoms	RSCC	RSR	LLDF	B-factors(Å ²)	Q<0.9
4	VGB	B	1628	26/26	0.93	0.18	0.32	23,29,50,51	0
4	VGB	A	1628	26/26	0.95	0.16	0.25	24,29,40,40	0
2	CL	A	1625	1/1	0.99	0.08	-1.93	45,45,45,45	0
2	CL	B	1625	1/1	0.99	0.03	-	50,50,50,50	0
3	NA	A	1627	1/1	0.94	0.06	-	49,49,49,49	0
2	CL	B	1627	1/1	0.96	0.12	-	57,57,57,57	0
2	CL	B	1626	1/1	0.94	0.12	-	60,60,60,60	0
2	CL	A	1626	1/1	0.94	0.05	-	65,65,65,65	0

6.5 Other polymers [i](#)

There are no such residues in this entry.