



Full wwPDB X-ray Structure Validation Report ⓘ

Jan 31, 2016 – 11:04 PM GMT

PDB ID : 1WCB
Title : PLP-DEPENDENT CATALYTIC ANTIBODY 15A9 IN COMPLEX WITH ITS HAPTEN
Authors : Golinelli-Pimpaneau, B.; Christen, P.
Deposited on : 2004-11-12
Resolution : 2.50 Å(reported)

This is a Full wwPDB X-ray Structure Validation Report for a publicly released PDB entry.
We welcome your comments at validation@mail.wwpdb.org
A user guide is available at
<http://wwpdb.org/validation/2016/XrayValidationReportHelp>
with specific help available everywhere you see the ⓘ symbol.

The following versions of software and data (see [references ⓘ](#)) were used in the production of this report:

MolProbity : 4.02b-467
Mogul : 1.7 (RC4), CSD as536be (2015)
Xtriage (Phenix) : 1.9-1692
EDS : rb-20026688
Percentile statistics : 20151230.v01 (using entries in the PDB archive December 30th 2015)
Refmac : 5.8.0135
CCP4 : 6.5.0
Ideal geometry (proteins) : Engh & Huber (2001)
Ideal geometry (DNA, RNA) : Parkinson et al. (1996)
Validation Pipeline (wwPDB-VP) : trunk26865

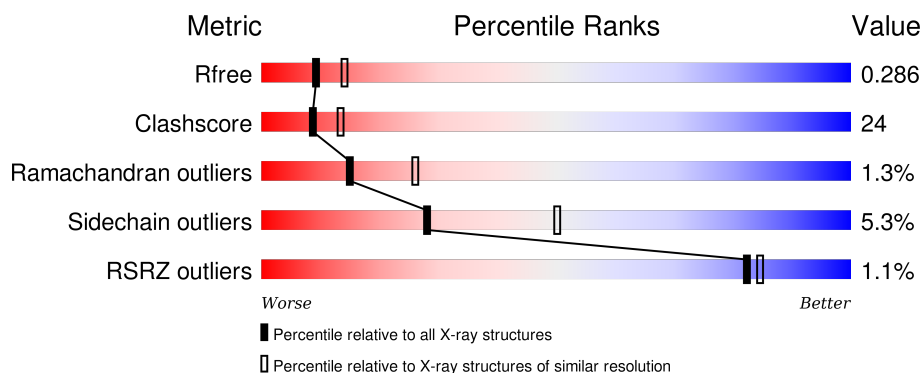
1 Overall quality at a glance

The following experimental techniques were used to determine the structure:

X-RAY DIFFRACTION

The reported resolution of this entry is 2.50 Å.

Percentile scores (ranging between 0-100) for global validation metrics of the entry are shown in the following graphic. The table shows the number of entries on which the scores are based.



Metric	Whole archive (#Entries)	Similar resolution (#Entries, resolution range(Å))
R_{free}	91344	3553 (2.50-2.50)
Clashscore	102246	4242 (2.50-2.50)
Ramachandran outliers	100387	4156 (2.50-2.50)
Sidechain outliers	100360	4158 (2.50-2.50)
RSRZ outliers	91569	3562 (2.50-2.50)

The table below summarises the geometric issues observed across the polymeric chains and their fit to the electron density. The red, orange, yellow and green segments on the lower bar indicate the fraction of residues that contain outliers for ≥ 3 , 2, 1 and 0 types of geometric quality criteria. A grey segment represents the fraction of residues that are not modelled. The numeric value for each fraction is indicated below the corresponding segment, with a dot representing fractions $\leq 5\%$. The upper red bar (where present) indicates the fraction of residues that have poor fit to the electron density. The numeric value is given above the bar.

Mol	Chain	Length	Quality of chain
1	A	213	<div> <div>2%</div> <div>62%</div> <div>36%</div> <div>.</div> </div>
1	L	213	<div> <div>%</div> <div>66%</div> <div>33%</div> <div></div> </div>
2	B	226	<div> <div>%</div> <div>62%</div> <div>34%</div> <div>..</div> </div>
2	H	226	<div> <div>%</div> <div>56%</div> <div>39%</div> <div>...</div> </div>

The following table lists non-polymeric compounds, carbohydrate monomers and non-standard

residues in protein, DNA, RNA chains that are outliers for geometric or electron-density-fit criteria:

Mol	Type	Chain	Res	Chirality	Geometry	Clashes	Electron density
4	IOD	B	1228	-	-	X	-
4	IOD	H	1213	-	-	X	-

2 Entry composition [i](#)

There are 5 unique types of molecules in this entry. The entry contains 7167 atoms, of which 0 are hydrogens and 0 are deuteriums.

In the tables below, the ZeroOcc column contains the number of atoms modelled with zero occupancy, the AltConf column contains the number of residues with at least one atom in alternate conformation and the Trace column contains the number of residues modelled with at most 2 atoms.

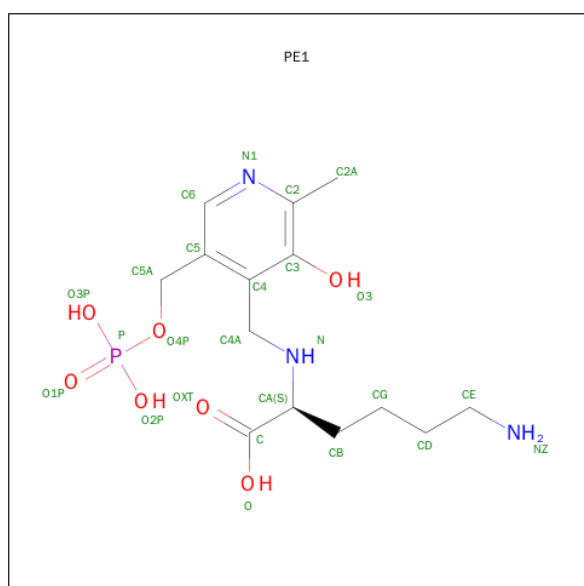
- Molecule 1 is a protein called FAB FRAGMENT OF CATALYTIC ANTIBODY 15A9, LIGHT CHAIN.

Mol	Chain	Residues	Atoms					ZeroOcc	AltConf	Trace
1	A	213	Total	C	N	O	S	0	0	0
			1639	1020	274	336	9			
1	L	213	Total	C	N	O	S	0	0	0
			1634	1017	273	335	9			

- Molecule 2 is a protein called FAB FRAGMENT OF CATALYTIC ANTIBODY 15A9, HEAVY CHAIN.

Mol	Chain	Residues	Atoms					ZeroOcc	AltConf	Trace
2	B	224	Total	C	N	O	S	0	0	0
			1702	1077	286	332	7			
2	H	223	Total	C	N	O	S	0	0	1
			1660	1054	277	322	7			

- Molecule 3 is N 2 -({3-HYDROXY-2-METHYL-5-[(PHOSPHONOOXY)METHYL]PYRIDIN-4-YL}METHYL)-L-LYSINE (three-letter code: PE1) (formula: C₁₄H₂₄N₃O₇P).



Mol	Chain	Residues	Atoms					ZeroOcc	AltConf
3	A	1	Total	C	N	O	P	0	0
			25	14	3	7	1		
3	L	1	Total	C	N	O	P	0	0
			25	14	3	7	1		

- Molecule 4 is IODIDE ION (three-letter code: IOD) (formula: I).

Mol	Chain	Residues	Atoms		ZeroOcc	AltConf
4	H	4	Total	I	0	0
			4	4		
4	B	4	Total	I	0	0
			4	4		
4	L	1	Total	I	0	0
			1	1		

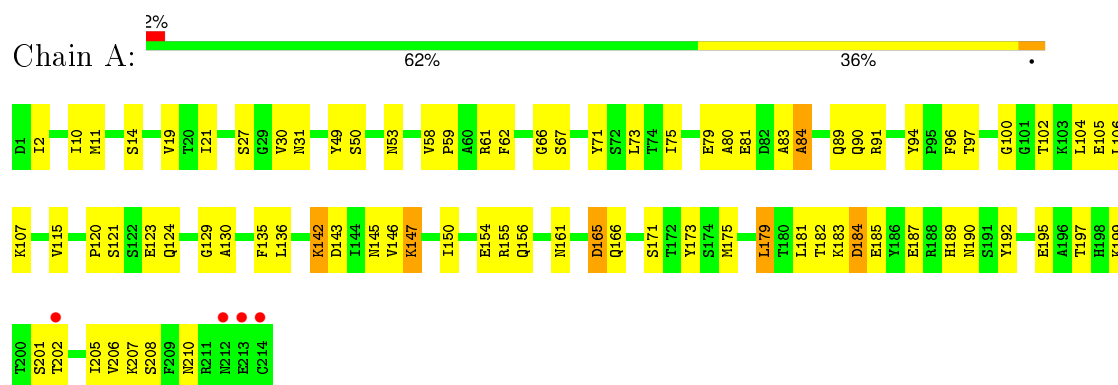
- Molecule 5 is water.

Mol	Chain	Residues	Atoms		ZeroOcc	AltConf
5	A	121	Total	O	0	0
			121	121		
5	B	127	Total	O	0	0
			127	127		
5	H	118	Total	O	0	0
			118	118		
5	L	107	Total	O	0	0
			107	107		

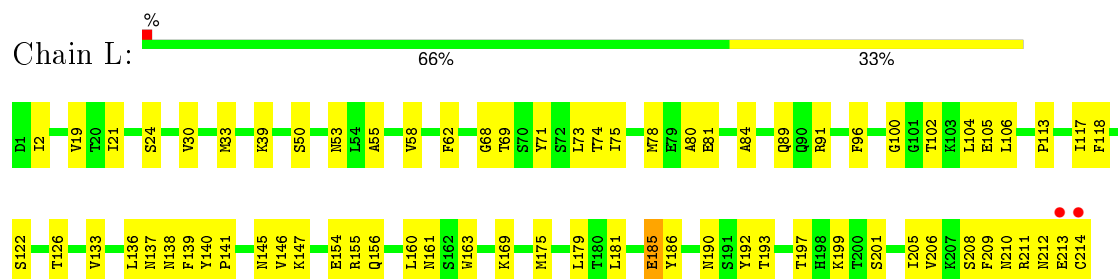
3 Residue-property plots

These plots are drawn for all protein, RNA and DNA chains in the entry. The first graphic for a chain summarises the proportions of errors displayed in the second graphic. The second graphic shows the sequence view annotated by issues in geometry and electron density. Residues are color-coded according to the number of geometric quality criteria for which they contain at least one outlier: green = 0, yellow = 1, orange = 2 and red = 3 or more. A red dot above a residue indicates a poor fit to the electron density ($RSRZ > 2$). Stretches of 2 or more consecutive residues without any outlier are shown as a green connector. Residues present in the sample, but not in the model, are shown in grey.

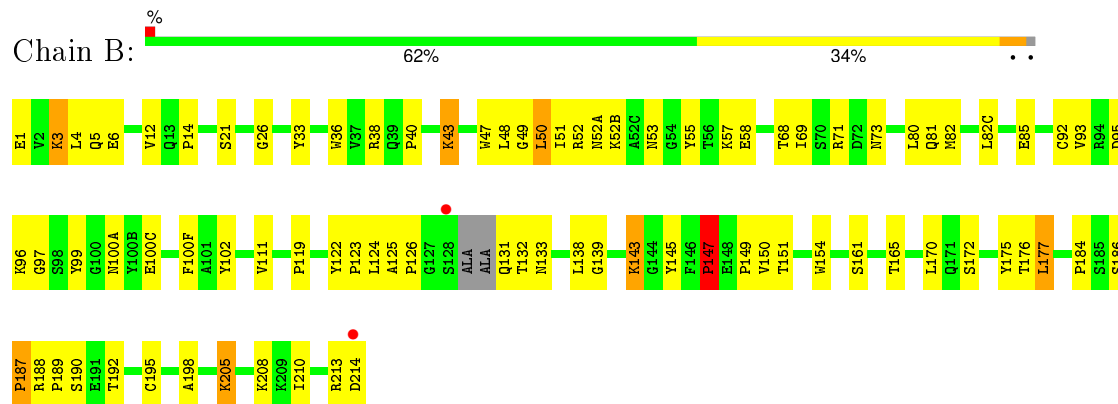
• Molecule 1: FAB FRAGMENT OF CATALYTIC ANTIBODY 15A9, LIGHT CHAIN



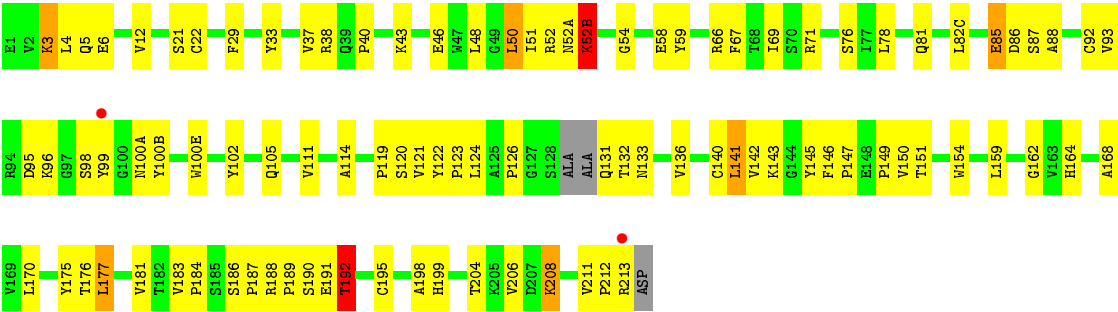
• Molecule 1: FAB FRAGMENT OF CATALYTIC ANTIBODY 15A9, LIGHT CHAIN



• Molecule 2: FAB FRAGMENT OF CATALYTIC ANTIBODY 15A9, HEAVY CHAIN



• Molecule 2: FAB FRAGMENT OF CATALYTIC ANTIBODY 15A9, HEAVY CHAIN



4 Data and refinement statistics

Property	Value	Source
Space group	P 1	Depositor
Cell constants a, b, c, α , β , γ	57.90Å 60.30Å 64.60Å 79.40° 78.20° 80.80°	Depositor
Resolution (Å)	40.00 – 2.50 39.81 – 2.29	Depositor EDS
% Data completeness (in resolution range)	98.1 (40.00-2.50) 87.0 (39.81-2.29)	Depositor EDS
R_{merge}	0.08	Depositor
R_{sym}	(Not available)	Depositor
$\langle I/\sigma(I) \rangle$ ¹	3.30 (at 2.29Å)	Xtriage
Refinement program	CNS 1.1	Depositor
R, R_{free}	0.223 , 0.290 0.221 , 0.286	Depositor DCC
R_{free} test set	2818 reflections (11.07%)	DCC
Wilson B-factor (Å ²)	21.9	Xtriage
Anisotropy	0.209	Xtriage
Bulk solvent k_{sol} (e/Å ³), B_{sol} (Å ²)	0.31 , 18.9	EDS
Estimated twinning fraction	0.040 for -k,-h,-l	Xtriage
L-test for twinning ²	$\langle L \rangle = 0.48$, $\langle L^2 \rangle = 0.32$	Xtriage
Outliers	0 of 33619 reflections	Xtriage
F_o, F_c correlation	0.90	EDS
Total number of atoms	7167	wwPDB-VP
Average B, all atoms (Å ²)	21.0	wwPDB-VP

Xtriage's analysis on translational NCS is as follows: *The largest off-origin peak in the Patterson function is 8.48% of the height of the origin peak. No significant pseudotranslation is detected.*

¹Intensities estimated from amplitudes.

²Theoretical values of $\langle |L| \rangle$, $\langle L^2 \rangle$ for acentric reflections are 0.5, 0.375 respectively for untwinned datasets, and 0.333, 0.2 for perfectly twinned datasets.

5 Model quality [i](#)

5.1 Standard geometry [i](#)

Bond lengths and bond angles in the following residue types are not validated in this section: IOD, PE1

The Z score for a bond length (or angle) is the number of standard deviations the observed value is removed from the expected value. A bond length (or angle) with $|Z| > 5$ is considered an outlier worth inspection. RMSZ is the root-mean-square of all Z scores of the bond lengths (or angles).

Mol	Chain	Bond lengths		Bond angles	
		RMSZ	$\# Z > 5$	RMSZ	$\# Z > 5$
1	A	0.41	0/1678	0.68	0/2279
1	L	0.39	0/1673	0.65	0/2274
2	B	0.41	0/1746	0.71	1/2381 (0.0%)
2	H	0.40	0/1705	0.67	0/2335
All	All	0.40	0/6802	0.67	1/9269 (0.0%)

There are no bond length outliers.

All (1) bond angle outliers are listed below:

Mol	Chain	Res	Type	Atoms	Z	Observed(°)	Ideal(°)
2	B	96	LYS	CD-CE-NZ	6.12	125.77	111.70

There are no chirality outliers.

There are no planarity outliers.

5.2 Too-close contacts [i](#)

In the following table, the Non-H and H(model) columns list the number of non-hydrogen atoms and hydrogen atoms in the chain respectively. The H(added) column lists the number of hydrogen atoms added and optimized by MolProbity. The Clashes column lists the number of clashes within the asymmetric unit, whereas Symm-Clashes lists symmetry related clashes.

Mol	Chain	Non-H	H(model)	H(added)	Clashes	Symm-Clashes
1	A	1639	0	1563	67	0
1	L	1634	0	1549	70	0
2	B	1702	0	1644	94	0
2	H	1660	0	1584	90	0
3	A	25	0	21	2	0
3	L	25	0	20	2	0

Continued on next page...

Continued from previous page...

Mol	Chain	Non-H	H(model)	H(added)	Clashes	Symm-Clashes
4	B	4	0	0	4	0
4	H	4	0	0	2	0
4	L	1	0	0	0	0
5	A	121	0	0	5	0
5	B	127	0	0	5	0
5	H	118	0	0	8	0
5	L	107	0	0	10	0
All	All	7167	0	6381	309	0

The all-atom clashscore is defined as the number of clashes found per 1000 atoms (including hydrogen atoms). The all-atom clashscore for this structure is 24.

All (309) close contacts within the same asymmetric unit are listed below, sorted by their clash magnitude.

Atom-1	Atom-2	Interatomic distance (Å)	Clash overlap (Å)
1:L:141:PRO:HG3	1:L:199:LYS:HE2	1.29	1.10
2:H:33:TYR:HB2	2:H:95:ASP:HB3	1.37	1.07
1:L:141:PRO:CG	1:L:199:LYS:HE2	1.86	1.05
1:L:80:ALA:HA	1:L:106:LEU:HD22	1.47	0.97
2:B:14:PRO:HG2	1:L:206:VAL:HG21	1.49	0.93
2:H:184:PRO:O	2:H:187:PRO:HD2	1.71	0.90
1:A:183:LYS:O	1:A:187:GLU:HG3	1.69	0.90
2:B:151:THR:CG2	2:B:198:ALA:HB3	2.04	0.87
1:L:21:ILE:HD12	1:L:102:THR:HG21	1.56	0.87
1:A:147:LYS:HD3	1:A:154:GLU:OE1	1.78	0.83
2:B:186:SER:HB3	2:B:187:PRO:HD3	1.63	0.80
2:H:186:SER:HB3	2:H:187:PRO:HD3	1.63	0.80
2:B:33:TYR:HB2	2:B:95:ASP:HB3	1.63	0.79
1:L:89:GLN:NE2	1:L:91:ARG:HE	1.84	0.75
2:B:123:PRO:HG3	2:B:208:LYS:HD2	1.67	0.75
1:A:105:GLU:HG2	1:A:106:LEU:N	2.01	0.74
1:L:141:PRO:CD	1:L:199:LYS:CE	2.66	0.73
1:A:94:TYR:CD2	2:B:58:GLU:HG2	2.23	0.73
1:L:141:PRO:CD	1:L:199:LYS:HE2	2.18	0.73
2:B:3:LYS:HZ3	2:B:3:LYS:HB2	1.54	0.72
2:B:82:MET:HB3	2:B:82(C):LEU:HD21	1.71	0.72
2:B:3:LYS:NZ	2:B:3:LYS:HB2	2.05	0.72
2:H:33:TYR:CB	2:H:95:ASP:HB3	2.17	0.71
1:A:142:LYS:HD2	1:A:143:ASP:N	2.05	0.71
2:B:33:TYR:CB	2:B:95:ASP:HB3	2.20	0.71
2:B:40:PRO:HG2	2:B:43:LYS:HG3	1.72	0.71

Continued on next page...

Continued from previous page...

Atom-1	Atom-2	Interatomic distance (Å)	Clash overlap (Å)
2:B:57:LYS:NZ	2:B:69:ILE:O	2.22	0.70
2:H:95:ASP:OD1	3:L:1216:PE1:N1	2.24	0.70
2:B:47:TRP:CH2	2:B:49:GLY:HA2	2.28	0.69
2:H:119:PRO:HB3	2:H:145:TYR:HB3	1.73	0.69
2:B:119:PRO:HB3	2:B:145:TYR:HB3	1.76	0.68
1:L:80:ALA:CA	1:L:106:LEU:HD22	2.21	0.68
1:L:39:LYS:HG2	1:L:84:ALA:HB2	1.75	0.67
2:B:184:PRO:O	2:B:187:PRO:HD2	1.93	0.67
1:L:21:ILE:CD1	1:L:102:THR:HG21	2.24	0.66
2:B:43:LYS:NZ	2:B:43:LYS:CB	2.58	0.66
2:H:208:LYS:HB3	2:H:208:LYS:HZ3	1.60	0.66
2:H:40:PRO:HG2	2:H:43:LYS:CB	2.26	0.66
1:L:211:ARG:HG3	5:L:2092:HOH:O	1.95	0.66
1:L:91:ARG:HA	1:L:96:PHE:CD2	2.31	0.66
2:B:99:TYR:HD1	4:B:1228:IOD:I	2.49	0.66
2:B:124:LEU:HB2	2:B:139:GLY:C	2.17	0.65
1:L:105:GLU:HG2	1:L:106:LEU:N	2.10	0.65
2:H:208:LYS:NZ	2:H:208:LYS:HB3	2.11	0.65
2:B:14:PRO:HG2	1:L:206:VAL:CG2	2.26	0.65
2:B:43:LYS:HZ3	2:B:43:LYS:CB	2.09	0.65
2:H:168:ALA:HB2	2:H:177:LEU:HD23	1.79	0.65
2:H:184:PRO:HG2	2:H:187:PRO:HG2	1.77	0.64
2:B:50:LEU:HD23	2:B:50:LEU:C	2.18	0.64
2:H:3:LYS:HB2	2:H:3:LYS:NZ	2.13	0.63
1:L:39:LYS:NZ	1:L:81:GLU:O	2.24	0.63
2:B:124:LEU:HB2	2:B:139:GLY:O	1.98	0.63
2:H:50:LEU:O	2:H:50:LEU:HD23	1.99	0.62
1:L:24:SER:HA	1:L:69:THR:O	1.98	0.62
2:H:188:ARG:HG2	2:H:189:PRO:HA	1.80	0.62
1:A:147:LYS:NZ	1:A:147:LYS:HB2	2.14	0.62
2:H:6:GLU:HG3	2:H:92:CYS:SG	2.40	0.62
2:B:43:LYS:NZ	2:B:43:LYS:HB2	2.15	0.61
2:H:22:CYS:HB3	2:H:78:LEU:HB3	1.82	0.61
2:H:191:GLU:O	2:H:192:THR:HG22	1.99	0.61
1:A:50:SER:HB2	1:A:53:ASN:HD22	1.64	0.61
2:B:151:THR:HG23	2:B:198:ALA:HB3	1.80	0.61
2:H:59:TYR:HE1	2:H:69:ILE:HG13	1.65	0.61
2:H:12:VAL:HG21	2:H:82(C):LEU:HD12	1.83	0.61
1:L:141:PRO:CD	1:L:199:LYS:HE3	2.31	0.61
2:B:213:ARG:C	2:B:214:ASP:HA	2.21	0.60
2:H:195:CYS:SG	2:H:208:LYS:HB2	2.41	0.60

Continued on next page...

Continued from previous page...

Atom-1	Atom-2	Interatomic distance (Å)	Clash overlap (Å)
1:A:105:GLU:HG2	1:A:106:LEU:H	1.66	0.60
2:B:100(C):GLU:O	2:B:100(C):GLU:HG2	2.02	0.60
2:B:125:ALA:HB2	2:B:210:ILE:CG2	2.32	0.60
1:A:145:ASN:HB3	1:A:197:THR:CG2	2.32	0.59
2:H:124:LEU:HD11	2:H:141:LEU:HB2	1.84	0.59
1:A:205:ILE:N	1:A:205:ILE:HD12	2.18	0.59
2:B:186:SER:CB	2:B:187:PRO:HD3	2.33	0.59
1:L:181:LEU:HD22	1:L:185:GLU:OE1	2.03	0.58
1:A:61:ARG:CZ	1:A:79:GLU:HG3	2.33	0.58
1:L:160:LEU:HA	5:L:2079:HOH:O	2.04	0.58
1:L:192:TYR:HB2	1:L:209:PHE:CE2	2.38	0.58
2:B:138:LEU:HD11	2:B:188:ARG:HG3	1.86	0.58
1:L:175:MET:HE1	5:L:2081:HOH:O	2.04	0.58
2:H:114:ALA:HB3	2:H:146:PHE:CE2	2.39	0.58
2:H:51:ILE:HD13	2:H:71:ARG:HG2	1.86	0.57
1:A:94:TYR:CE2	2:B:58:GLU:HG2	2.39	0.57
1:L:205:ILE:N	1:L:205:ILE:HD12	2.20	0.57
1:A:80:ALA:HA	1:A:106:LEU:HD22	1.86	0.57
2:H:124:LEU:HD12	2:H:124:LEU:N	2.19	0.57
1:A:182:THR:OG1	1:A:185:GLU:HB2	2.05	0.56
1:L:136:LEU:C	1:L:137:ASN:HD22	2.08	0.56
2:B:205:LYS:NZ	2:B:205:LYS:HB2	2.20	0.56
2:B:154:TRP:CZ3	2:B:195:CYS:HB3	2.40	0.56
2:H:170:LEU:HB2	2:H:175:TYR:CE1	2.41	0.56
1:A:2:ILE:HG12	1:A:27:SER:HB2	1.88	0.56
2:B:5:GLN:O	2:B:5:GLN:HG3	2.05	0.56
2:B:52(B):LYS:HB2	2:B:55:TYR:CZ	2.41	0.55
1:L:193:THR:HA	1:L:208:SER:HB3	1.88	0.55
2:B:151:THR:HG22	2:B:198:ALA:O	2.06	0.55
1:A:150:ILE:HG21	1:A:189:HIS:ND1	2.21	0.55
1:L:73:LEU:HD23	1:L:73:LEU:C	2.27	0.55
2:B:147:PRO:HB2	5:B:2079:HOH:O	2.06	0.55
1:A:105:GLU:HG3	1:A:173:TYR:OH	2.08	0.54
1:L:141:PRO:HD2	1:L:199:LYS:HE3	1.89	0.54
2:H:188:ARG:HA	2:H:190:SER:H	1.71	0.54
2:H:100(A):ASN:HB2	4:H:1213:IOD:I	2.77	0.54
2:B:122:TYR:HE2	2:B:143:LYS:HD3	1.72	0.54
2:B:68:THR:HB	2:B:81:GLN:HB3	1.90	0.54
1:L:145:ASN:HB3	1:L:197:THR:OG1	2.07	0.54
2:H:184:PRO:HG2	2:H:187:PRO:CG	2.38	0.54
2:H:5:GLN:NE2	2:H:105:GLN:HE22	2.05	0.54

Continued on next page...

Continued from previous page...

Atom-1	Atom-2	Interatomic distance (Å)	Clash overlap (Å)
1:A:182:THR:HB	1:A:184:ASP:OD1	2.06	0.54
1:A:124:GLN:HG2	1:A:129:GLY:O	2.08	0.54
1:A:89:GLN:NE2	1:A:91:ARG:HE	2.05	0.54
2:B:97:GLY:HA3	4:B:1228:IOD:I	2.77	0.54
2:H:52(B):LYS:O	2:H:54:GLY:N	2.41	0.54
1:L:192:TYR:HE1	5:L:2095:HOH:O	1.90	0.53
1:L:190:ASN:HA	5:L:2095:HOH:O	2.09	0.53
1:L:190:ASN:HB3	5:L:2096:HOH:O	2.09	0.53
2:H:124:LEU:HD21	1:L:133:VAL:HG21	1.89	0.53
1:A:62:PHE:CE1	1:A:75:ILE:HG12	2.44	0.53
2:B:52(A):ASN:OD1	2:B:53:ASN:ND2	2.36	0.53
2:H:121:VAL:HG13	2:H:142:VAL:HG22	1.91	0.53
1:A:100:GLY:HA3	5:A:2006:HOH:O	2.08	0.53
2:B:102:TYR:HA	5:B:2072:HOH:O	2.08	0.53
2:H:123:PRO:HD3	2:H:208:LYS:NZ	2.23	0.53
1:A:83:ALA:O	1:A:84:ALA:HB2	2.09	0.53
2:H:5:GLN:NE2	2:H:6:GLU:O	2.39	0.53
2:H:52(A):ASN:O	2:H:52(B):LYS:C	2.46	0.53
1:L:140:TYR:CD2	1:L:141:PRO:HA	2.43	0.52
2:H:96:LYS:HB2	2:H:100(E):TRP:CZ2	2.44	0.52
2:B:12:VAL:HG11	2:B:82(C):LEU:HD13	1.91	0.52
2:B:6:GLU:HG3	2:B:92:CYS:SG	2.50	0.52
2:H:5:GLN:HE22	2:H:105:GLN:HE22	1.56	0.52
2:H:50:LEU:HD23	2:H:50:LEU:C	2.29	0.52
2:H:99:TYR:HD1	4:H:1213:IOD:I	2.62	0.52
2:H:85:GLU:HG3	2:H:86:ASP:N	2.25	0.52
1:A:142:LYS:C	1:A:142:LYS:HD2	2.30	0.52
1:L:190:ASN:OD1	1:L:210:ASN:ND2	2.42	0.52
2:B:172:SER:HA	2:H:133:ASN:OD1	2.10	0.52
2:H:37:VAL:HG13	2:H:46:GLU:O	2.10	0.52
1:A:165:ASP:O	1:A:166:GLN:C	2.49	0.52
2:B:1:GLU:O	2:B:26:GLY:HA3	2.10	0.52
1:L:89:GLN:HE22	1:L:91:ARG:HE	1.57	0.52
1:A:184:ASP:OD1	1:A:184:ASP:N	2.35	0.52
1:A:21:ILE:HD12	1:A:102:THR:HG21	1.91	0.52
1:L:146:VAL:HG12	1:L:147:LYS:N	2.25	0.51
1:L:136:LEU:HD21	1:L:146:VAL:HG22	1.92	0.51
1:L:161:ASN:HB3	1:L:175:MET:HE3	1.93	0.51
1:A:49:TYR:CE2	2:B:100(C):GLU:HG3	2.45	0.51
2:H:87:SER:O	2:H:88:ALA:HB2	2.09	0.51
1:L:62:PHE:CE1	1:L:75:ILE:HG12	2.46	0.51

Continued on next page...

Continued from previous page...

Atom-1	Atom-2	Interatomic distance (Å)	Clash overlap (Å)
1:L:211:ARG:C	1:L:212:ASN:HD22	2.13	0.51
1:A:195:GLU:HA	1:A:206:VAL:HG12	1.93	0.51
2:B:14:PRO:CG	1:L:206:VAL:HG21	2.32	0.51
2:H:184:PRO:HG2	2:H:187:PRO:CD	2.40	0.50
2:B:12:VAL:HG23	5:B:2016:HOH:O	2.11	0.50
2:H:5:GLN:HE22	2:H:105:GLN:NE2	2.07	0.50
2:H:12:VAL:HG13	2:H:111:VAL:HG22	1.93	0.50
1:A:106:LEU:HG	1:A:107:LYS:O	2.11	0.50
1:L:78:MET:SD	1:L:104:LEU:HD21	2.52	0.50
1:L:19:VAL:O	1:L:74:THR:HG23	2.12	0.50
2:H:93:VAL:HG13	2:H:102:TYR:O	2.12	0.50
2:B:43:LYS:HZ2	2:B:43:LYS:HB2	1.76	0.50
2:H:59:TYR:CE1	2:H:69:ILE:HG13	2.45	0.50
2:H:126:PRO:HB3	5:H:2090:HOH:O	2.10	0.49
1:A:201:SER:HB3	1:A:205:ILE:HD11	1.94	0.49
2:H:184:PRO:C	2:H:187:PRO:HD2	2.31	0.49
2:H:5:GLN:O	2:H:22:CYS:HA	2.12	0.49
2:H:132:THR:HA	5:H:2088:HOH:O	2.11	0.49
1:L:113:PRO:HB3	1:L:139:PHE:HB3	1.93	0.49
2:B:47:TRP:HZ2	2:B:50:LEU:HD13	1.77	0.49
2:B:33:TYR:CE2	2:B:52:ARG:HG2	2.48	0.48
1:A:145:ASN:HB3	1:A:197:THR:HG22	1.94	0.48
1:A:73:LEU:HD23	1:A:73:LEU:C	2.33	0.48
1:A:66:GLY:O	1:A:67:SER:HB3	2.13	0.48
1:L:81:GLU:HG2	5:L:2047:HOH:O	2.12	0.48
2:H:131:GLN:N	5:H:2087:HOH:O	2.46	0.48
2:H:186:SER:CB	2:H:187:PRO:HD3	2.37	0.48
2:B:131:GLN:C	2:B:133:ASN:H	2.17	0.48
1:A:31:ASN:ND2	5:A:2018:HOH:O	2.46	0.48
1:L:106:LEU:HD21	5:L:2058:HOH:O	2.12	0.48
2:B:177:LEU:HD12	2:B:177:LEU:C	2.33	0.48
1:A:120:PRO:HG2	1:A:130:ALA:HB1	1.95	0.48
1:L:117:ILE:HG12	1:L:118:PHE:N	2.28	0.48
2:B:47:TRP:CZ2	2:B:49:GLY:HA2	2.48	0.48
2:H:177:LEU:HD12	2:H:177:LEU:C	2.34	0.48
1:A:147:LYS:HB2	1:A:147:LYS:HZ3	1.79	0.48
2:H:151:THR:HG23	5:H:2094:HOH:O	2.13	0.47
2:B:188:ARG:HD3	2:B:189:PRO:N	2.29	0.47
1:A:11:MET:CE	1:A:19:VAL:HG13	2.44	0.47
2:B:186:SER:HB3	2:B:187:PRO:CD	2.41	0.47
1:A:123:GLU:HG2	2:B:208:LYS:NZ	2.29	0.47

Continued on next page...

Continued from previous page...

Atom-1	Atom-2	Interatomic distance (Å)	Clash overlap (Å)
2:H:6:GLU:HA	2:H:21:SER:O	2.14	0.47
2:H:29:PHE:CD2	2:H:76:SER:HA	2.49	0.47
1:A:89:GLN:HE22	1:A:91:ARG:HE	1.60	0.47
2:H:151:THR:CG2	2:H:198:ALA:HB3	2.45	0.47
1:A:90:GLN:HG3	1:A:97:THR:OG1	2.15	0.47
1:L:136:LEU:N	1:L:136:LEU:HD12	2.30	0.47
2:H:198:ALA:HA	2:H:204:THR:O	2.14	0.47
1:A:192:TYR:O	1:A:208:SER:HB2	2.14	0.47
1:L:91:ARG:HB3	1:L:96:PHE:CZ	2.50	0.47
2:H:208:LYS:CB	2:H:208:LYS:NZ	2.71	0.47
2:H:121:VAL:HA	2:H:141:LEU:O	2.15	0.47
1:L:89:GLN:NE2	1:L:91:ARG:NE	2.58	0.46
2:H:123:PRO:HD3	2:H:208:LYS:HZ1	1.80	0.46
1:A:49:TYR:HE2	2:B:100(C):GLU:HG3	1.80	0.46
1:L:214:CYS:OXT	1:L:214:CYS:SG	2.72	0.46
5:A:2099:HOH:O	2:B:176:THR:HG22	2.15	0.46
1:L:50:SER:HB2	1:L:53:ASN:HD22	1.80	0.46
2:H:121:VAL:HG21	2:H:206:VAL:CG2	2.46	0.46
2:B:50:LEU:HD22	2:B:58:GLU:HB3	1.98	0.46
2:B:150:VAL:CG2	2:B:177:LEU:HD21	2.46	0.46
1:L:190:ASN:OD1	1:L:210:ASN:OD1	2.33	0.45
2:B:100(A):ASN:HB2	4:B:1228:IOD:I	2.86	0.45
1:L:147:LYS:HD3	1:L:154:GLU:OE2	2.15	0.45
2:B:50:LEU:HD23	2:B:50:LEU:O	2.16	0.45
2:H:192:THR:N	5:H:2109:HOH:O	2.49	0.45
2:B:177:LEU:HD12	2:B:177:LEU:O	2.17	0.45
1:A:91:ARG:NH1	3:A:1215:PE1:H2A1	2.32	0.45
2:H:213:ARG:N	5:H:2118:HOH:O	2.50	0.45
1:L:141:PRO:HD2	1:L:199:LYS:CE	2.46	0.45
2:H:33:TYR:CZ	2:H:96:LYS:HD3	2.52	0.45
3:A:1215:PE1:N1	2:B:95:ASP:OD1	2.49	0.45
2:B:213:ARG:HG3	2:B:213:ARG:HH11	1.80	0.45
1:L:155:ARG:HH21	1:L:181:LEU:HD23	1.81	0.45
1:A:11:MET:HG3	1:A:104:LEU:HD12	1.97	0.45
1:L:140:TYR:CG	1:L:141:PRO:HA	2.52	0.45
2:B:186:SER:CB	2:B:187:PRO:CD	2.95	0.45
2:H:124:LEU:HD13	2:H:140:CYS:CA	2.47	0.45
2:H:143:LYS:HB3	2:H:176:THR:HG23	1.99	0.45
1:L:122:SER:O	1:L:126:THR:HG23	2.17	0.45
2:B:165:THR:HB	5:B:2106:HOH:O	2.17	0.45
1:A:161:ASN:HB3	1:A:175:MET:HE3	1.99	0.44

Continued on next page...

Continued from previous page...

Atom-1	Atom-2	Interatomic distance (Å)	Clash overlap (Å)
2:B:93:VAL:CG1	2:B:100(F):PHE:HA	2.46	0.44
2:H:81:GLN:HG2	5:H:2052:HOH:O	2.17	0.44
2:H:188:ARG:HD3	2:H:189:PRO:N	2.32	0.44
2:H:164:HIS:HE1	1:L:138:ASN:OD1	2.00	0.44
2:H:100(B):TYR:CD2	3:L:1216:PE1:HE1C	2.52	0.44
2:H:136:VAL:HG12	2:H:183:VAL:O	2.17	0.44
1:A:91:ARG:HG2	1:A:96:PHE:CD1	2.53	0.44
1:L:55:ALA:HB3	1:L:58:VAL:HG21	2.00	0.44
2:H:120:SER:HB3	2:H:122:TYR:CZ	2.53	0.44
1:L:2:ILE:HD13	1:L:30:VAL:HG12	1.99	0.44
2:B:170:LEU:HD13	2:B:175:TYR:CE2	2.53	0.44
2:H:164:HIS:HD2	5:H:2102:HOH:O	2.01	0.43
1:A:91:ARG:NH2	5:A:2064:HOH:O	2.44	0.43
1:A:121:SER:CB	2:B:123:PRO:HD2	2.48	0.43
1:A:14:SER:OG	1:A:107:LYS:HD2	2.18	0.43
2:H:162:GLY:O	2:H:181:VAL:HA	2.18	0.43
2:B:154:TRP:CH2	2:B:195:CYS:HB3	2.54	0.43
2:B:38:ARG:HD3	2:B:48:LEU:HD11	2.01	0.43
1:L:80:ALA:CB	1:L:106:LEU:HD22	2.48	0.43
2:B:50:LEU:C	2:B:50:LEU:CD2	2.86	0.43
1:A:115:VAL:HA	1:A:135:PHE:O	2.18	0.43
1:A:80:ALA:CA	1:A:106:LEU:HD22	2.49	0.43
2:B:93:VAL:HG13	2:B:102:TYR:O	2.19	0.43
1:A:205:ILE:H	1:A:205:ILE:HD12	1.83	0.43
1:L:186:TYR:HH	1:L:209:PHE:HZ	1.64	0.43
1:A:106:LEU:HG	1:A:107:LYS:N	2.33	0.42
2:B:43:LYS:HZ3	2:B:43:LYS:HB3	1.83	0.42
2:B:51:ILE:HG23	2:B:71:ARG:HH21	1.84	0.42
2:B:71:ARG:HD3	2:B:73:ASN:OD1	2.19	0.42
1:A:179:LEU:HD13	1:A:181:LEU:HG	2.01	0.42
1:L:190:ASN:OD1	1:L:210:ASN:CG	2.56	0.42
2:B:12:VAL:HG13	2:B:111:VAL:HG13	2.01	0.42
2:H:124:LEU:N	2:H:124:LEU:CD1	2.83	0.42
1:L:146:VAL:CG1	1:L:147:LYS:N	2.82	0.42
2:B:205:LYS:HZ3	2:B:205:LYS:HB2	1.84	0.42
1:A:136:LEU:HD12	1:A:136:LEU:N	2.34	0.42
2:H:188:ARG:NH2	2:H:212:PRO:HD3	2.35	0.42
2:B:40:PRO:HG2	2:B:43:LYS:HZ2	1.83	0.42
2:H:211:VAL:HG12	2:H:212:PRO:O	2.20	0.42
2:H:199:HIS:HB3	2:H:204:THR:HB	2.01	0.42
1:A:10:ILE:HG22	1:A:11:MET:N	2.33	0.42

Continued on next page...

Continued from previous page...

Atom-1	Atom-2	Interatomic distance (Å)	Clash overlap (Å)
2:H:38:ARG:HG2	2:H:48:LEU:HD21	2.01	0.42
2:H:96:LYS:HB2	2:H:100(E):TRP:CE2	2.53	0.42
2:B:184:PRO:HG2	2:B:187:PRO:HD2	2.01	0.42
2:H:168:ALA:HA	2:H:177:LEU:HB3	2.02	0.42
2:H:145:TYR:CE1	2:H:150:VAL:HG13	2.54	0.42
2:H:66:ARG:C	2:H:67:PHE:HD1	2.23	0.42
2:H:12:VAL:CG1	2:H:111:VAL:HG22	2.50	0.42
2:B:143:LYS:NZ	2:B:143:LYS:HB2	2.35	0.42
2:B:6:GLU:HA	2:B:21:SER:O	2.20	0.42
2:B:119:PRO:CB	2:B:145:TYR:HB3	2.48	0.42
2:H:143:LYS:HB2	2:H:176:THR:OG1	2.20	0.42
1:A:136:LEU:HD21	1:A:146:VAL:HG22	2.02	0.42
1:L:141:PRO:HD3	1:L:199:LYS:CE	2.48	0.41
1:L:210:ASN:O	1:L:212:ASN:ND2	2.53	0.41
1:A:58:VAL:HA	1:A:59:PRO:HD3	1.93	0.41
1:A:106:LEU:HD23	1:A:171:SER:OG	2.20	0.41
1:A:202:THR:O	1:A:202:THR:HG22	2.21	0.41
2:B:36:TRP:CE2	2:B:80:LEU:HB2	2.55	0.41
1:A:67:SER:HA	1:A:71:TYR:CZ	2.55	0.41
1:A:147:LYS:HD3	1:A:154:GLU:CD	2.39	0.41
2:B:187:PRO:O	2:B:190:SER:N	2.54	0.41
1:A:106:LEU:HD21	5:A:2097:HOH:O	2.20	0.41
1:A:2:ILE:HD13	1:A:30:VAL:HG12	2.03	0.41
2:B:6:GLU:N	2:B:6:GLU:OE1	2.49	0.41
2:B:12:VAL:O	2:B:111:VAL:HA	2.21	0.41
2:B:12:VAL:HG21	2:B:82(C):LEU:HD12	2.02	0.41
2:B:125:ALA:HB2	2:B:210:ILE:HG22	2.03	0.40
2:B:126:PRO:HD3	2:B:138:LEU:CD2	2.51	0.40
2:H:33:TYR:CG	2:H:52:ARG:HA	2.57	0.40
2:H:154:TRP:CZ3	2:H:195:CYS:HB3	2.57	0.40
2:B:99:TYR:CD1	4:B:1228:IOD:I	3.38	0.40
1:A:197:THR:O	1:A:197:THR:HG23	2.22	0.40
1:L:155:ARG:NH2	5:L:2073:HOH:O	2.53	0.40
1:L:100:GLY:HA3	5:L:2057:HOH:O	2.22	0.40
2:B:165:THR:N	5:B:2106:HOH:O	2.51	0.40
1:A:190:ASN:OD1	1:A:210:ASN:OD1	2.38	0.40
1:L:33:MET:HB2	1:L:71:TYR:CD2	2.56	0.40

There are no symmetry-related clashes.

5.3 Torsion angles

5.3.1 Protein backbone

In the following table, the Percentiles column shows the percent Ramachandran outliers of the chain as a percentile score with respect to all X-ray entries followed by that with respect to entries of similar resolution.

The Analysed column shows the number of residues for which the backbone conformation was analysed, and the total number of residues.

Mol	Chain	Analysed	Favoured	Allowed	Outliers	Percentiles	
1	A	211/213 (99%)	195 (92%)	15 (7%)	1 (0%)	34	55
1	L	211/213 (99%)	197 (93%)	11 (5%)	3 (1%)	14	24
2	B	219/226 (97%)	198 (90%)	17 (8%)	4 (2%)	11	18
2	H	219/226 (97%)	198 (90%)	18 (8%)	3 (1%)	14	24
All	All	860/878 (98%)	788 (92%)	61 (7%)	11 (1%)	15	26

All (11) Ramachandran outliers are listed below:

Mol	Chain	Res	Type
2	B	192	THR
2	H	159	LEU
2	H	192	THR
2	H	52(B)	LYS
1	A	84	ALA
2	B	187	PRO
1	L	68	GLY
1	L	213	GLU
1	L	201	SER
2	B	132	THR
2	B	147	PRO

5.3.2 Protein sidechains

In the following table, the Percentiles column shows the percent sidechain outliers of the chain as a percentile score with respect to all X-ray entries followed by that with respect to entries of similar resolution.

The Analysed column shows the number of residues for which the sidechain conformation was analysed, and the total number of residues.

Mol	Chain	Analysed	Rotameric	Outliers	Percentiles	
1	A	185/185 (100%)	175 (95%)	10 (5%)	27	49
1	L	183/185 (99%)	178 (97%)	5 (3%)	52	79
2	B	188/192 (98%)	177 (94%)	11 (6%)	24	44
2	H	180/192 (94%)	167 (93%)	13 (7%)	18	33
All	All	736/754 (98%)	697 (95%)	39 (5%)	28	50

All (39) residues with a non-rotameric sidechain are listed below:

Mol	Chain	Res	Type
1	A	81	GLU
1	A	142	LYS
1	A	147	LYS
1	A	155	ARG
1	A	156	GLN
1	A	165	ASP
1	A	179	LEU
1	A	184	ASP
1	A	199	LYS
1	A	207	LYS
2	B	3	LYS
2	B	4	LEU
2	B	43	LYS
2	B	50	LEU
2	B	85	GLU
2	B	143	LYS
2	B	147	PRO
2	B	149	PRO
2	B	161	SER
2	B	177	LEU
2	B	205	LYS
2	H	3	LYS
2	H	4	LEU
2	H	50	LEU
2	H	52(B)	LYS
2	H	58	GLU
2	H	85	GLU
2	H	98	SER
2	H	141	LEU
2	H	147	PRO
2	H	149	PRO
2	H	177	LEU
2	H	192	THR

Continued on next page...

Continued from previous page...

Mol	Chain	Res	Type
2	H	208	LYS
1	L	156	GLN
1	L	163	TRP
1	L	169	LYS
1	L	179	LEU
1	L	185	GLU

Some sidechains can be flipped to improve hydrogen bonding and reduce clashes. All (16) such sidechains are listed below:

Mol	Chain	Res	Type
1	A	31	ASN
1	A	53	ASN
1	A	89	GLN
1	A	137	ASN
1	A	210	ASN
1	A	212	ASN
2	H	5	GLN
2	H	75	GLN
2	H	81	GLN
2	H	164	HIS
1	L	53	ASN
1	L	89	GLN
1	L	137	ASN
1	L	145	ASN
1	L	210	ASN
1	L	212	ASN

5.3.3 RNA ⓘ

There are no RNA molecules in this entry.

5.4 Non-standard residues in protein, DNA, RNA chains ⓘ

There are no non-standard protein/DNA/RNA residues in this entry.

5.5 Carbohydrates ⓘ

There are no carbohydrates in this entry.

5.6 Ligand geometry

Of 11 ligands modelled in this entry, 9 are monoatomic - leaving 2 for Mogul analysis.

In the following table, the Counts columns list the number of bonds (or angles) for which Mogul statistics could be retrieved, the number of bonds (or angles) that are observed in the model and the number of bonds (or angles) that are defined in the chemical component dictionary. The Link column lists molecule types, if any, to which the group is linked. The Z score for a bond length (or angle) is the number of standard deviations the observed value is removed from the expected value. A bond length (or angle) with $|Z| > 2$ is considered an outlier worth inspection. RMSZ is the root-mean-square of all Z scores of the bond lengths (or angles).

Mol	Type	Chain	Res	Link	Bond lengths			Bond angles		
					Counts	RMSZ	$\# Z > 2$	Counts	RMSZ	$\# Z > 2$
3	PE1	A	1215	-	22,25,25	2.03	3 (13%)	25,34,34	1.47	4 (16%)
3	PE1	L	1216	-	22,25,25	1.95	3 (13%)	25,34,34	1.49	4 (16%)

In the following table, the Chirals column lists the number of chiral outliers, the number of chiral centers analysed, the number of these observed in the model and the number defined in the chemical component dictionary. Similar counts are reported in the Torsion and Rings columns. '-' means no outliers of that kind were identified.

Mol	Type	Chain	Res	Link	Chirals	Torsions	Rings
3	PE1	A	1215	-	-	0/16/20/20	0/1/1/1
3	PE1	L	1216	-	-	0/16/20/20	0/1/1/1

All (6) bond length outliers are listed below:

Mol	Chain	Res	Type	Atoms	Z	Observed(Å)	Ideal(Å)
3	A	1215	PE1	C5-C4	3.03	1.44	1.40
3	L	1216	PE1	C5-C4	3.44	1.45	1.40
3	A	1215	PE1	C3-C4	3.63	1.45	1.40
3	L	1216	PE1	C3-C4	3.75	1.45	1.40
3	L	1216	PE1	C3-C2	6.31	1.45	1.40
3	A	1215	PE1	C3-C2	6.90	1.45	1.40

All (8) bond angle outliers are listed below:

Mol	Chain	Res	Type	Atoms	Z	Observed(°)	Ideal(°)
3	L	1216	PE1	C3-C2-N1	-2.74	116.83	120.61
3	A	1215	PE1	C3-C2-N1	-2.48	117.18	120.61
3	L	1216	PE1	C2A-C2-C3	2.54	124.10	121.04
3	A	1215	PE1	C6-N1-C2	2.67	124.73	119.28
3	A	1215	PE1	C2A-C2-C3	2.77	124.38	121.04

Continued on next page...

Continued from previous page...

Mol	Chain	Res	Type	Atoms	Z	Observed(°)	Ideal(°)
3	L	1216	PE1	C6-N1-C2	2.88	125.15	119.28
3	A	1215	PE1	C4A-C4-C5	4.38	123.62	119.71
3	L	1216	PE1	C4A-C4-C5	4.54	123.75	119.71

There are no chirality outliers.

There are no torsion outliers.

There are no ring outliers.

2 monomers are involved in 4 short contacts:

Mol	Chain	Res	Type	Clashes	Symm-Clashes
3	A	1215	PE1	2	0
3	L	1216	PE1	2	0

5.7 Other polymers [i](#)

There are no such residues in this entry.

5.8 Polymer linkage issues [i](#)

There are no chain breaks in this entry.

6 Fit of model and data [i](#)

6.1 Protein, DNA and RNA chains [i](#)

In the following table, the column labelled ‘#RSRZ> 2’ contains the number (and percentage) of RSRZ outliers, followed by percent RSRZ outliers for the chain as percentile scores relative to all X-ray entries and entries of similar resolution. The OWAB column contains the minimum, median, 95th percentile and maximum values of the occupancy-weighted average B-factor per residue. The column labelled ‘Q< 0.9’ lists the number of (and percentage) of residues with an average occupancy less than 0.9.

Mol	Chain	Analysed	<RSRZ>	#RSRZ>2	OWAB(Å ²)	Q<0.9
1	A	213/213 (100%)	-0.52	4 (1%) 70 73	3, 18, 41, 80	0
1	L	213/213 (100%)	-0.39	2 (0%) 85 88	7, 20, 50, 82	0
2	B	224/226 (99%)	-0.56	2 (0%) 85 88	5, 18, 40, 64	0
2	H	223/226 (98%)	-0.49	2 (0%) 85 88	4, 19, 41, 51	0
All	All	873/878 (99%)	-0.49	10 (1%) 82 84	3, 19, 44, 82	0

All (10) RSRZ outliers are listed below:

Mol	Chain	Res	Type	RSRZ
1	L	214	CYS	5.9
1	A	214	CYS	4.8
2	H	213	ARG	3.9
1	A	213	GLU	3.5
1	A	202	THR	3.5
1	L	213	GLU	3.3
2	B	214	ASP	2.8
2	B	128	SER	2.5
1	A	212	ASN	2.2
2	H	99	TYR	2.1

6.2 Non-standard residues in protein, DNA, RNA chains [i](#)

There are no non-standard protein/DNA/RNA residues in this entry.

6.3 Carbohydrates [i](#)

There are no carbohydrates in this entry.

6.4 Ligands [i](#)

In the following table, the Atoms column lists the number of modelled atoms in the group and the number defined in the chemical component dictionary. LLDF column lists the quality of electron density of the group with respect to its neighbouring residues in protein, DNA or RNA chains. The B-factors column lists the minimum, median, 95th percentile and maximum values of B factors of atoms in the group. The column labelled 'Q< 0.9' lists the number of atoms with occupancy less than 0.9.

Mol	Type	Chain	Res	Atoms	RSCC	RSR	LLDF	B-factors(Å ²)	Q<0.9
3	PE1	A	1215	25/25	0.96	0.13	0.51	7,15,18,21	0
3	PE1	L	1216	25/25	0.96	0.12	0.30	10,15,20,21	0
4	IOD	H	1213	1/1	0.99	0.06	-1.69	49,49,49,49	0
4	IOD	L	1215	1/1	0.99	0.03	-2.17	53,53,53,53	0
4	IOD	B	1228	1/1	1.00	0.05	-2.17	17,17,17,17	0
4	IOD	H	1214	1/1	0.96	0.05	-2.28	84,84,84,84	0
4	IOD	B	1227	1/1	1.00	0.04	-	35,35,35,35	0
4	IOD	B	1229	1/1	0.99	0.05	-	53,53,53,53	0
4	IOD	H	1215	1/1	0.99	0.05	-	67,67,67,67	0
4	IOD	H	1216	1/1	1.00	0.04	-	28,28,28,28	0
4	IOD	B	1230	1/1	0.99	0.04	-	78,78,78,78	0

6.5 Other polymers [i](#)

There are no such residues in this entry.