



Full wwPDB X-ray Structure Validation Report ⓘ

Feb 19, 2016 – 07:47 PM GMT

PDB ID : 4WCF
Title : Trypanosoma brucei PTR1 in complex with inhibitor 9
Authors : Mangani, S.; Di Pisa, F.; Pozzi, C.
Deposited on : 2014-09-04
Resolution : 1.93 Å(reported)

This is a Full wwPDB X-ray Structure Validation Report for a publicly released PDB entry.
We welcome your comments at validation@mail.wwpdb.org
A user guide is available at
<http://wwpdb.org/validation/2016/XrayValidationReportHelp>
with specific help available everywhere you see the ⓘ symbol.

The following versions of software and data (see [references ⓘ](#)) were used in the production of this report:

MolProbity : 4.02b-467
Mogul : 1.7.1 (RC1), CSD as537be (2016)
Xtriage (Phenix) : 1.9-1692
EDS : rb-20026982
Percentile statistics : 20151230.v01 (using entries in the PDB archive December 30th 2015)
Refmac : 5.8.0135
CCP4 : 6.5.0
Ideal geometry (proteins) : Engh & Huber (2001)
Ideal geometry (DNA, RNA) : Parkinson et al. (1996)
Validation Pipeline (wwPDB-VP) : rb-20026982

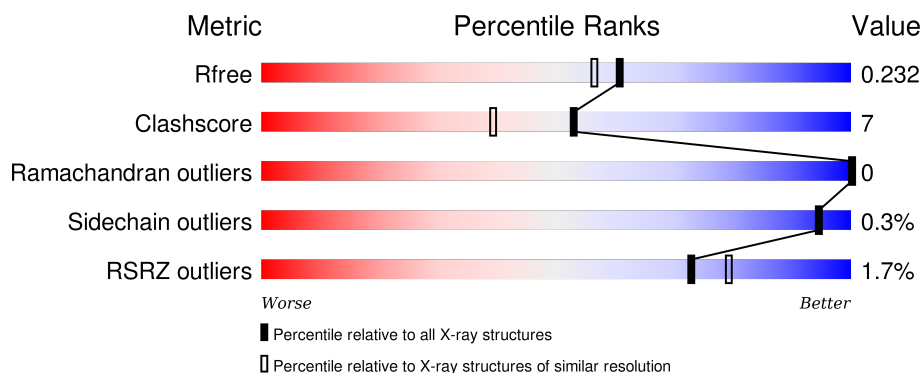
1 Overall quality at a glance

The following experimental techniques were used to determine the structure:

X-RAY DIFFRACTION

The reported resolution of this entry is 1.93 Å.

Percentile scores (ranging between 0-100) for global validation metrics of the entry are shown in the following graphic. The table shows the number of entries on which the scores are based.



Metric	Whole archive (#Entries)	Similar resolution (#Entries, resolution range(Å))
R_{free}	91344	2910 (1.96-1.92)
Clashscore	102246	3095 (1.96-1.92)
Ramachandran outliers	100387	3062 (1.96-1.92)
Sidechain outliers	100360	3062 (1.96-1.92)
RSRZ outliers	91569	2915 (1.96-1.92)

The table below summarises the geometric issues observed across the polymeric chains and their fit to the electron density. The red, orange, yellow and green segments on the lower bar indicate the fraction of residues that contain outliers for ≥ 3 , 2, 1 and 0 types of geometric quality criteria. A grey segment represents the fraction of residues that are not modelled. The numeric value for each fraction is indicated below the corresponding segment, with a dot representing fractions $\leq 5\%$. The upper red bar (where present) indicates the fraction of residues that have poor fit to the electron density. The numeric value is given above the bar.

Mol	Chain	Length	Quality of chain
1	A	268	<div> <div>2%</div> <div>77% 16% 7%</div> </div>
1	D	268	<div> <div>%</div> <div>83% 10% 7%</div> </div>
2	B	268	<div> <div>%</div> <div>81% 11% 8%</div> </div>
3	C	268	<div> <div>2%</div> <div>80% 12% 8%</div> </div>

The following table lists non-polymeric compounds, carbohydrate monomers and non-standard

residues in protein, DNA, RNA chains that are outliers for geometric or electron-density-fit criteria:

Mol	Type	Chain	Res	Chirality	Geometry	Clashes	Electron density
5	3KN	A	302	-	-	-	X
5	3KN	C	302	-	-	-	X
7	GOL	C	304	-	-	X	X
7	GOL	D	303	-	-	-	X

2 Entry composition

There are 8 unique types of molecules in this entry. The entry contains 8035 atoms, of which 0 are hydrogens and 0 are deuteriums.

In the tables below, the ZeroOcc column contains the number of atoms modelled with zero occupancy, the AltConf column contains the number of residues with at least one atom in alternate conformation and the Trace column contains the number of residues modelled with at most 2 atoms.

- Molecule 1 is a protein called Pteridine reductase.

Mol	Chain	Residues	Atoms					ZeroOcc	AltConf	Trace
1	A	249	Total	C	N	O	S	0	4	0
			1849	1164	325	348	12			
1	D	250	Total	C	N	O	S	0	1	0
			1846	1160	324	351	11			

- Molecule 2 is a protein called Pteridine reductase.

Mol	Chain	Residues	Atoms					ZeroOcc	AltConf	Trace
2	B	247	Total	C	N	O	S	0	3	0
			1832	1153	318	349	12			

- Molecule 3 is a protein called Pteridine reductase.

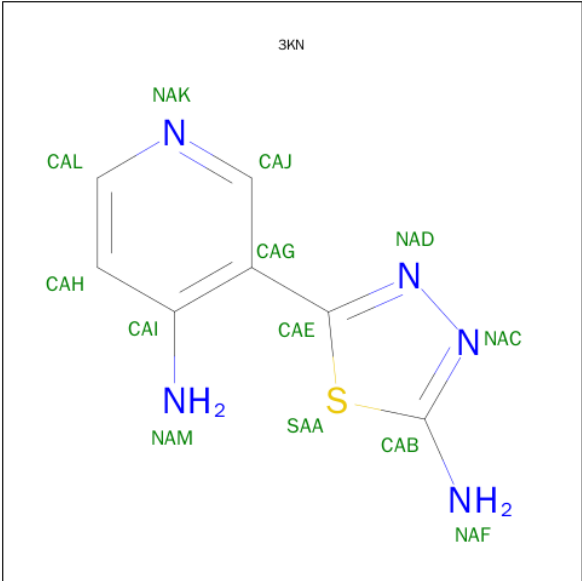
Mol	Chain	Residues	Atoms					ZeroOcc	AltConf	Trace
3	C	246	Total	C	N	O	S	0	2	0
			1810	1135	317	347	11			

- Molecule 4 is NADP NICOTINAMIDE-ADENINE-DINUCLEOTIDE PHOSPHATE (three-letter code: NAP) (formula: C₂₁H₂₈N₇O₁₇P₃).



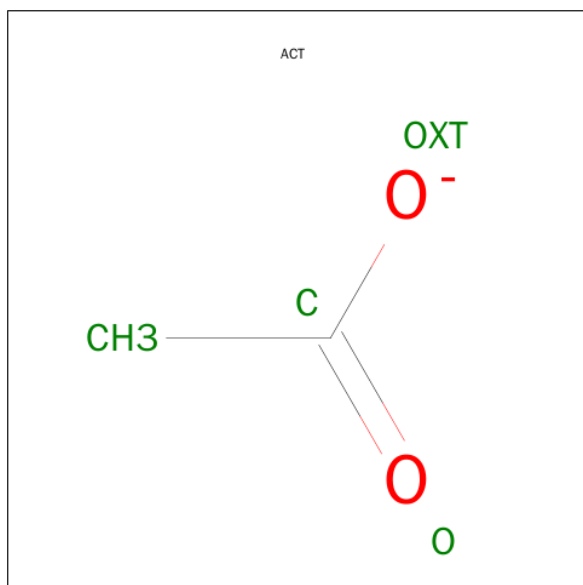
Mol	Chain	Residues	Atoms					ZeroOcc	AltConf
4	A	1	Total	C	N	O	P	0	0
			48	21	7	17	3		
4	B	1	Total	C	N	O	P	0	0
			48	21	7	17	3		
4	C	1	Total	C	N	O	P	0	0
			48	21	7	17	3		
4	D	1	Total	C	N	O	P	0	0
			48	21	7	17	3		

- Molecule 5 is 3-(5-amino-1,3,4-thiadiazol-2-yl)pyridin-4-amine (three-letter code: 3KN) (formula: C₇H₇N₅S).



Mol	Chain	Residues	Atoms				ZeroOcc	AltConf
5	A	1	Total	C	N	S	0	0
			13	7	5	1		
5	B	1	Total	C	N	S	0	0
			13	7	5	1		
5	C	1	Total	C	N	S	0	0
			13	7	5	1		
5	D	1	Total	C	N	S	0	0
			13	7	5	1		

- Molecule 6 is ACETATE ION (three-letter code: ACT) (formula: $C_2H_3O_2$).



Mol	Chain	Residues	Atoms			ZeroOcc	AltConf
6	A	1	Total	C	O	0	0
			4	2	2		
6	C	1	Total	C	O	0	0
			4	2	2		

- Molecule 7 is GLYCEROL (three-letter code: GOL) (formula: $C_3H_8O_3$).



Mol	Chain	Residues	Atoms			ZeroOcc	AltConf
7	C	1	Total	C	O	0	0
			6	3	3		
7	D	1	Total	C	O	0	0
			6	3	3		

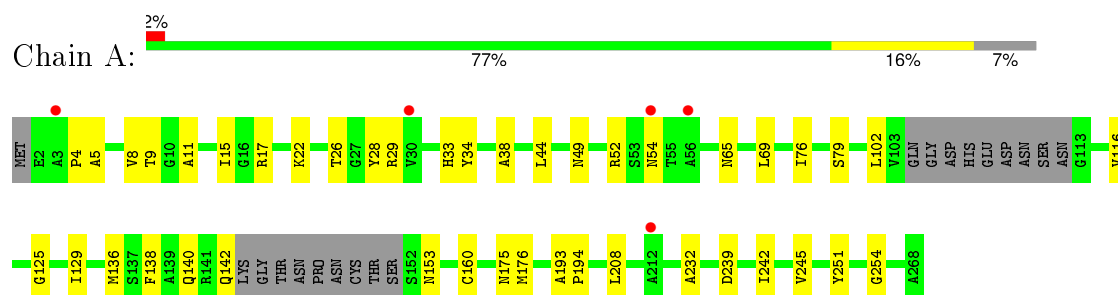
- Molecule 8 is water.

Mol	Chain	Residues	Atoms		ZeroOcc	AltConf
8	A	116	Total	O	0	0
			116	116		
8	B	117	Total	O	0	0
			117	117		
8	C	104	Total	O	0	0
			104	104		
8	D	97	Total	O	0	0
			97	97		

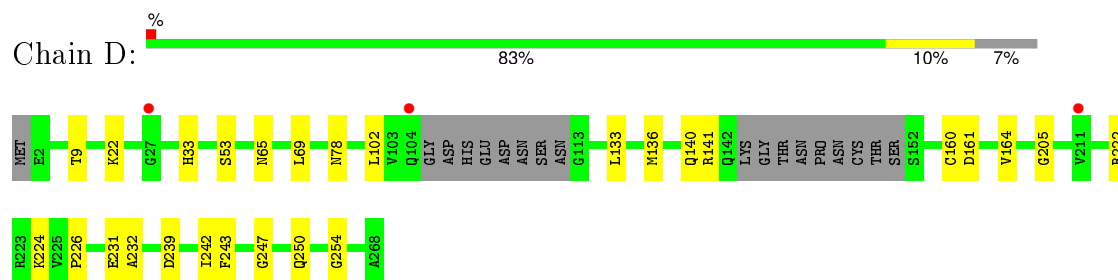
3 Residue-property plots

These plots are drawn for all protein, RNA and DNA chains in the entry. The first graphic for a chain summarises the proportions of errors displayed in the second graphic. The second graphic shows the sequence view annotated by issues in geometry and electron density. Residues are color-coded according to the number of geometric quality criteria for which they contain at least one outlier: green = 0, yellow = 1, orange = 2 and red = 3 or more. A red dot above a residue indicates a poor fit to the electron density ($RSRZ > 2$). Stretches of 2 or more consecutive residues without any outlier are shown as a green connector. Residues present in the sample, but not in the model, are shown in grey.

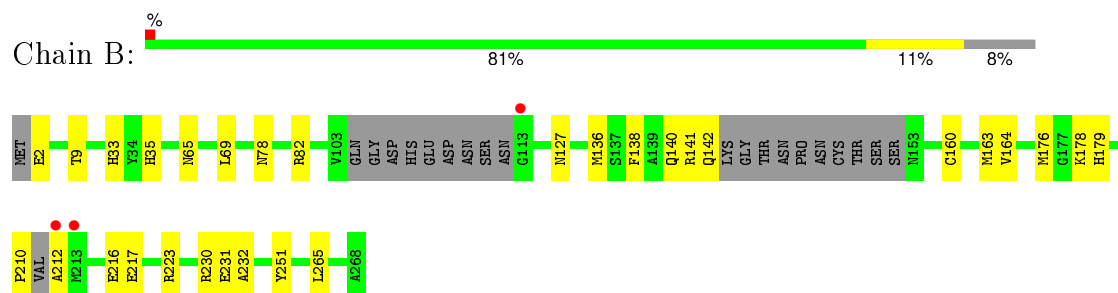
• Molecule 1: Pteridine reductase



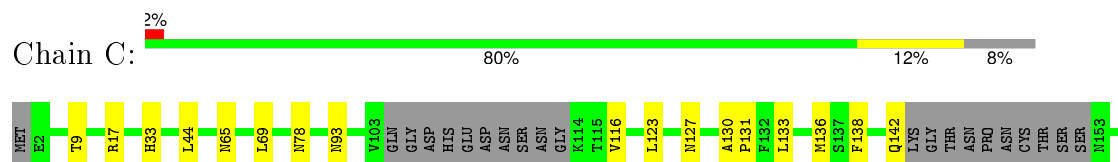
• Molecule 1: Pteridine reductase

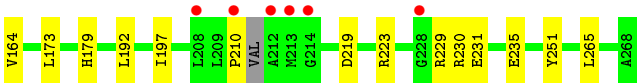


• Molecule 2: Pteridine reductase



• Molecule 3: Pteridine reductase





4 Data and refinement statistics

Property	Value	Source
Space group	P 1 21 1	Depositor
Cell constants a, b, c, α , β , γ	74.73 Å 90.21 Å 82.78 Å 90.00° 115.74° 90.00°	Depositor
Resolution (Å)	74.57 – 1.93 45.10 – 1.93	Depositor EDS
% Data completeness (in resolution range)	100.0 (74.57-1.93) 100.0 (45.10-1.93)	Depositor EDS
R_{merge}	0.07	Depositor
R_{sym}	(Not available)	Depositor
$\langle I/\sigma(I) \rangle$ ¹	3.08 (at 1.94 Å)	Xtriage
Refinement program	REFMAC 5.8.0069	Depositor
R, R_{free}	0.194 , 0.232 0.194 , 0.232	Depositor DCC
R_{free} test set	3682 reflections (5.21%)	DCC
Wilson B-factor (Å ²)	21.8	Xtriage
Anisotropy	0.230	Xtriage
Bulk solvent k_{sol} (e/Å ³), B_{sol} (Å ²)	0.38 , 52.6	EDS
Estimated twinning fraction	0.005 for h,-k,-h-l	Xtriage
L-test for twinning ²	$\langle L \rangle = 0.50$, $\langle L^2 \rangle = 0.33$	Xtriage
Outliers	3 of 74361 reflections (0.004%)	Xtriage
F_o, F_c correlation	0.95	EDS
Total number of atoms	8035	wwPDB-VP
Average B, all atoms (Å ²)	28.0	wwPDB-VP

Xtriage's analysis on translational NCS is as follows: *The analyses of the Patterson function reveals a significant off-origin peak that is 48.86 % of the origin peak, indicating pseudo translational symmetry. The chance of finding a peak of this or larger height randomly in a structure without pseudo translational symmetry is equal to 8.0957e-05. The detected translational NCS is most likely also responsible for the elevated intensity ratio.*

¹ Intensities estimated from amplitudes.

² Theoretical values of $\langle |L| \rangle$, $\langle L^2 \rangle$ for acentric reflections are 0.5, 0.375 respectively for untwinned datasets, and 0.333, 0.2 for perfectly twinned datasets.

5 Model quality [i](#)

5.1 Standard geometry [i](#)

Bond lengths and bond angles in the following residue types are not validated in this section: GOL, NAP, CSX, ACT, OCS, 3KN

The Z score for a bond length (or angle) is the number of standard deviations the observed value is removed from the expected value. A bond length (or angle) with $|Z| > 5$ is considered an outlier worth inspection. RMSZ is the root-mean-square of all Z scores of the bond lengths (or angles).

Mol	Chain	Bond lengths		Bond angles	
		RMSZ	$\# Z > 5$	RMSZ	$\# Z > 5$
1	A	0.64	0/1872	0.72	0/2540
1	D	0.68	0/1860	0.74	0/2524
2	B	0.68	0/1840	0.77	0/2492
3	C	0.67	0/1824	0.73	0/2477
All	All	0.67	0/7396	0.74	0/10033

There are no bond length outliers.

There are no bond angle outliers.

There are no chirality outliers.

There are no planarity outliers.

5.2 Too-close contacts [i](#)

In the following table, the Non-H and H(model) columns list the number of non-hydrogen atoms and hydrogen atoms in the chain respectively. The H(added) column lists the number of hydrogen atoms added and optimized by MolProbity. The Clashes column lists the number of clashes within the asymmetric unit, whereas Symm-Clashes lists symmetry related clashes.

Mol	Chain	Non-H	H(model)	H(added)	Clashes	Symm-Clashes
1	A	1849	0	1862	32	0
1	D	1846	0	1853	20	0
2	B	1832	0	1841	23	0
3	C	1810	0	1788	31	0
4	A	48	0	25	1	0
4	B	48	0	25	1	0
4	C	48	0	25	1	0
4	D	48	0	25	1	0
5	A	13	0	7	1	0

Continued on next page...

Continued from previous page...

Mol	Chain	Non-H	H(model)	H(added)	Clashes	Symm-Clashes
5	B	13	0	7	1	0
5	C	13	0	7	3	0
5	D	13	0	7	1	0
6	A	4	0	3	1	0
6	C	4	0	3	0	0
7	C	6	0	8	5	0
7	D	6	0	8	2	0
8	A	116	0	0	6	0
8	B	117	0	0	3	0
8	C	104	0	0	3	0
8	D	97	0	0	5	0
All	All	8035	0	7494	100	0

The all-atom clashscore is defined as the number of clashes found per 1000 atoms (including hydrogen atoms). The all-atom clashscore for this structure is 7.

All (100) close contacts within the same asymmetric unit are listed below, sorted by their clash magnitude.

Atom-1	Atom-2	Interatomic distance (Å)	Clash overlap (Å)
3:C:65:ASN:ND2	7:C:304:GOL:H31	1.59	1.15
3:C:65:ASN:HD22	7:C:304:GOL:C3	1.59	1.14
1:A:17:ARG:HD3	6:A:303:ACT:H3	1.46	0.97
3:C:65:ASN:HD22	7:C:304:GOL:H31	0.75	0.92
3:C:78:ASN:HB3	8:C:408:HOH:O	1.71	0.90
2:B:78:ASN:OD1	2:B:141:ARG:NH1	2.13	0.81
1:A:140:GLN:CG	8:A:508:HOH:O	2.31	0.79
3:C:65:ASN:HB3	7:C:304:GOL:H32	1.64	0.79
1:A:22:LYS:HE3	1:A:239:ASP:OD1	1.83	0.78
1:A:140:GLN:HG2	8:A:508:HOH:O	1.81	0.78
2:B:210:PRO:O	2:B:212:ALA:HB3	1.86	0.75
3:C:219:ASP:HB3	3:C:223:ARG:NH1	2.02	0.73
1:D:136:MET:CE	8:D:495:HOH:O	2.38	0.71
1:D:222:ARG:HD3	1:D:231:GLU:OE2	1.91	0.71
5:D:302:3KN:NAD	5:D:302:3KN:NAM	2.31	0.71
1:D:136:MET:HE3	8:D:495:HOH:O	1.92	0.67
5:C:302:3KN:NAM	5:C:302:3KN:NAD	2.23	0.67
1:A:65:ASN:HA	1:A:69:LEU:HD22	1.76	0.66
3:C:230:ARG:CZ	3:C:231:GLU:O	2.45	0.64
3:C:123:LEU:O	3:C:127:ASN:HB2	2.01	0.61
1:D:243:PHE:HB2	7:D:303:GOL:H32	1.81	0.61
2:B:164:VAL:HG22	2:B:179:HIS:CD2	2.36	0.61

Continued on next page...

Continued from previous page...

Atom-1	Atom-2	Interatomic distance (Å)	Clash overlap (Å)
3:C:65:ASN:HA	3:C:69:LEU:HD22	1.84	0.60
1:D:247:GLY:O	1:D:250:GLN:HG2	2.04	0.57
2:B:78:ASN:HB3	2:B:82:ARG:NH1	2.19	0.57
2:B:216:GLU:HG2	2:B:217:GLU:N	2.20	0.57
1:D:224:LYS:O	1:D:226:PRO:HD3	2.04	0.56
1:A:34:TYR:CE2	1:A:38:ALA:HA	2.42	0.55
2:B:136[B]:MET:HG3	1:D:102:LEU:O	2.08	0.53
3:C:164:VAL:HG22	3:C:179:HIS:CD2	2.43	0.53
1:A:76:ILE:O	1:A:79:SER:HB2	2.08	0.52
1:D:65:ASN:HA	1:D:69:LEU:HD22	1.92	0.52
3:C:235:GLU:HG2	8:C:410:HOH:O	2.09	0.51
2:B:216:GLU:HG2	2:B:217:GLU:H	1.75	0.51
3:C:265:LEU:HD11	1:D:254:GLY:HA3	1.93	0.51
3:C:219:ASP:HB3	3:C:223:ARG:HH12	1.74	0.51
1:A:138:PHE:O	1:A:142:GLN:HG2	2.11	0.51
1:D:78:ASN:OD1	1:D:141:ARG:NH1	2.43	0.51
1:A:9:THR:HA	1:A:33:HIS:HB3	1.93	0.50
1:A:232:ALA:HB2	2:B:251:TYR:CE2	2.46	0.49
1:D:161:ASP:HB3	1:D:164:VAL:HG13	1.94	0.49
2:B:230:ARG:CZ	2:B:231:GLU:O	2.61	0.49
1:D:9:THR:HA	1:D:33:HIS:HB3	1.95	0.48
3:C:9:THR:HA	3:C:33:HIS:HB3	1.95	0.48
1:D:160:CYS:HB3	8:D:437:HOH:O	2.14	0.47
2:B:2:GLU:HA	2:B:2:GLU:OE1	2.13	0.47
2:B:163:MET:HG3	8:B:483:HOH:O	2.13	0.47
2:B:127:ASN:OD1	2:B:178:LYS:HE2	2.13	0.47
2:B:160:CYS:HB3	8:B:446:HOH:O	2.15	0.47
3:C:210:PRO:HD3	5:C:302:3KN:H5	1.96	0.47
1:D:205:GLY:O	4:D:301:NAP:H4N	2.15	0.46
1:A:116:VAL:HG21	3:C:136[B]:MET:HE1	1.97	0.46
5:B:302:3KN:NAD	5:B:302:3KN:NAM	2.40	0.46
1:A:125:GLY:HA2	1:A:129[A]:ILE:HB	1.98	0.45
2:B:138:PHE:O	2:B:142:GLN:HG2	2.16	0.45
3:C:93:ASN:OD1	4:C:301:NAP:H51N	2.16	0.45
1:D:242:ILE:HG22	7:D:303:GOL:H2	1.98	0.45
5:A:302:3KN:NAM	5:A:302:3KN:NAD	2.35	0.45
1:A:17:ARG:HG3	1:A:44:LEU:HD22	1.98	0.45
1:A:193:ALA:HB3	1:A:194:PRO:HD3	1.98	0.44
3:C:133:LEU:HD23	3:C:136[A]:MET:HE1	2.00	0.44
1:D:22:LYS:HE3	1:D:239:ASP:OD1	2.18	0.44
1:A:254:GLY:HA3	2:B:265:LEU:HD11	2.00	0.44

Continued on next page...

Continued from previous page...

Atom-1	Atom-2	Interatomic distance (Å)	Clash overlap (Å)
1:A:8:VAL:HG12	1:A:11:ALA:HB2	2.00	0.44
2:B:65:ASN:HA	2:B:69:LEU:HD22	2.00	0.43
2:B:9:THR:HA	2:B:33:HIS:HB3	2.00	0.43
3:C:192:LEU:HB3	3:C:197:ILE:HB	2.01	0.43
1:A:5:ALA:HA	1:A:29:ARG:O	2.18	0.43
1:A:136[B]:MET:HE1	3:C:116:VAL:HG21	2.00	0.43
2:B:35:HIS:HB2	4:B:301:NAP:C2A	2.49	0.43
1:A:242:ILE:HA	1:A:242:ILE:HD13	1.84	0.42
1:D:133:LEU:HD23	1:D:136:MET:HE2	2.00	0.42
3:C:230:ARG:NH1	3:C:231:GLU:O	2.52	0.42
3:C:65:ASN:HB3	7:C:304:GOL:C3	2.44	0.42
1:A:232:ALA:HB2	2:B:251:TYR:CD2	2.53	0.42
1:D:136:MET:HE1	8:D:495:HOH:O	2.09	0.42
1:A:140:GLN:HG3	8:A:508:HOH:O	2.11	0.42
1:A:102:LEU:O	3:C:136[A]:MET:HG3	2.19	0.42
1:A:251:TYR:CE2	2:B:232:ALA:HB2	2.55	0.42
1:A:175:ASN:ND2	8:A:509:HOH:O	2.45	0.42
1:A:208:LEU:HA	8:A:476:HOH:O	2.18	0.42
1:A:153:ASN:ND2	1:A:245:VAL:O	2.53	0.42
3:C:251:TYR:CE2	1:D:232:ALA:HB2	2.55	0.42
3:C:210:PRO:HD3	5:C:302:3KN:CAJ	2.50	0.41
3:C:127:ASN:HA	8:C:450:HOH:O	2.20	0.41
3:C:173:LEU:HD23	3:C:173:LEU:HA	1.91	0.41
1:D:53:SER:HB3	8:D:402:HOH:O	2.20	0.41
2:B:223:ARG:CB	8:B:515:HOH:O	2.67	0.41
1:A:4:PRO:HG2	1:A:28:TYR:CD2	2.55	0.41
1:A:49:ASN:HA	1:A:52:ARG:O	2.21	0.41
1:A:15:ILE:HB	4:A:301:NAP:H51N	2.02	0.41
1:A:160:CYS:HB3	8:A:433:HOH:O	2.21	0.41
3:C:130:ALA:HB3	3:C:131:PRO:HD3	2.03	0.41
3:C:223:ARG:O	3:C:229:ARG:NH1	2.46	0.40
3:C:138:PHE:O	3:C:142:GLN:HG2	2.20	0.40
3:C:17:ARG:HG3	3:C:44:LEU:HD22	2.04	0.40
1:A:26:THR:O	1:A:26:THR:HG22	2.22	0.40

There are no symmetry-related clashes.

5.3 Torsion angles [i](#)

5.3.1 Protein backbone [i](#)

In the following table, the Percentiles column shows the percent Ramachandran outliers of the chain as a percentile score with respect to all X-ray entries followed by that with respect to entries of similar resolution.

The Analysed column shows the number of residues for which the backbone conformation was analysed, and the total number of residues.

Mol	Chain	Analysed	Favoured	Allowed	Outliers	Percentiles	
1	A	245/268 (91%)	236 (96%)	9 (4%)	0	100	100
1	D	243/268 (91%)	235 (97%)	8 (3%)	0	100	100
2	B	239/268 (89%)	231 (97%)	8 (3%)	0	100	100
3	C	238/268 (89%)	228 (96%)	10 (4%)	0	100	100
All	All	965/1072 (90%)	930 (96%)	35 (4%)	0	100	100

There are no Ramachandran outliers to report.

5.3.2 Protein sidechains [i](#)

In the following table, the Percentiles column shows the percent sidechain outliers of the chain as a percentile score with respect to all X-ray entries followed by that with respect to entries of similar resolution.

The Analysed column shows the number of residues for which the sidechain conformation was analysed, and the total number of residues.

Mol	Chain	Analysed	Rotameric	Outliers	Percentiles	
1	A	192/212 (91%)	191 (100%)	1 (0%)	92	92
1	D	192/212 (91%)	191 (100%)	1 (0%)	92	92
2	B	189/211 (90%)	189 (100%)	0	100	100
3	C	185/212 (87%)	185 (100%)	0	100	100
All	All	758/847 (90%)	756 (100%)	2 (0%)	94	94

All (2) residues with a non-rotameric sidechain are listed below:

Mol	Chain	Res	Type
1	A	54	ASN
1	D	140	GLN

Some sidechains can be flipped to improve hydrogen bonding and reduce clashes. All (11) such sidechains are listed below:

Mol	Chain	Res	Type
1	A	25	GLN
1	A	175	ASN
1	A	186	GLN
2	B	65	ASN
2	B	166	GLN
2	B	186	GLN
3	C	65	ASN
3	C	186	GLN
1	D	67	ASN
1	D	166	GLN
1	D	186	GLN

5.3.3 RNA ⓘ

There are no RNA molecules in this entry.

5.4 Non-standard residues in protein, DNA, RNA chains ⓘ

9 non-standard protein/DNA/RNA residues are modelled in this entry.

In the following table, the Counts columns list the number of bonds (or angles) for which Mogul statistics could be retrieved, the number of bonds (or angles) that are observed in the model and the number of bonds (or angles) that are defined in the chemical component dictionary. The Link column lists molecule types, if any, to which the group is linked. The Z score for a bond length (or angle) is the number of standard deviations the observed value is removed from the expected value. A bond length (or angle) with $|Z| > 2$ is considered an outlier worth inspection. RMSZ is the root-mean-square of all Z scores of the bond lengths (or angles).

Mol	Type	Chain	Res	Link	Bond lengths			Bond angles		
					Counts	RMSZ	$\# Z > 2$	Counts	RMSZ	$\# Z > 2$
1	CSX	A	168	1	2,6,7	0.66	0	2,6,8	1.19	0
1	CSX	A	59	1	2,6,7	0.79	0	2,6,8	1.42	0
2	CSX	B	168	2	2,6,7	0.87	0	2,6,8	1.24	0
2	OCS	B	59	2	6,8,9	4.39	2 (33%)	7,11,13	5.88	4 (57%)
2	CSX	B	73	2	2,6,7	0.66	0	2,6,8	1.28	0
3	CSX	C	168	3	2,6,7	0.75	0	2,6,8	1.30	0
3	OCS	C	59	3	6,8,9	4.25	2 (33%)	7,11,13	3.79	4 (57%)
1	CSX	D	168	1	2,6,7	0.83	0	2,6,8	1.34	0
1	CSX	D	59	1	2,6,7	0.62	0	2,6,8	1.61	1 (50%)

In the following table, the Chirals column lists the number of chiral outliers, the number of chiral centers analysed, the number of these observed in the model and the number defined in the chemical component dictionary. Similar counts are reported in the Torsion and Rings columns. '-' means no outliers of that kind were identified.

Mol	Type	Chain	Res	Link	Chirals	Torsions	Rings
1	CSX	A	168	1	-	0/1/5/7	0/0/0/0
1	CSX	A	59	1	-	0/1/5/7	0/0/0/0
2	CSX	B	168	2	-	0/1/5/7	0/0/0/0
2	OCS	B	59	2	-	1/4/7/9	0/0/0/0
2	CSX	B	73	2	-	0/1/5/7	0/0/0/0
3	CSX	C	168	3	-	0/1/5/7	0/0/0/0
3	OCS	C	59	3	-	1/4/7/9	0/0/0/0
1	CSX	D	168	1	-	0/1/5/7	0/0/0/0
1	CSX	D	59	1	-	0/1/5/7	0/0/0/0

All (4) bond length outliers are listed below:

Mol	Chain	Res	Type	Atoms	Z	Observed(Å)	Ideal(Å)
3	C	59	OCS	CB-SG	-8.77	1.67	1.77
2	B	59	OCS	CB-SG	-8.01	1.68	1.77
3	C	59	OCS	OD3-SG	5.33	1.60	1.45
2	B	59	OCS	OD3-SG	6.91	1.65	1.45

All (9) bond angle outliers are listed below:

Mol	Chain	Res	Type	Atoms	Z	Observed(°)	Ideal(°)
2	B	59	OCS	OD3-SG-OD1	-4.69	100.70	113.96
3	C	59	OCS	OD2-SG-OD3	-3.12	104.37	111.26
1	D	59	CSX	O-C-CA	-2.17	119.89	125.72
3	C	59	OCS	O-C-CA	-2.13	120.01	125.72
2	B	59	OCS	O-C-CA	-2.09	120.11	125.72
3	C	59	OCS	OD2-SG-CB	3.85	112.98	104.99
3	C	59	OCS	OD3-SG-CB	8.22	112.71	106.92
2	B	59	OCS	OD3-SG-CB	9.97	113.94	106.92
2	B	59	OCS	OD1-SG-CB	10.78	114.52	106.92

There are no chirality outliers.

All (2) torsion outliers are listed below:

Mol	Chain	Res	Type	Atoms
3	C	59	OCS	SG-CB-CA-N
2	B	59	OCS	SG-CB-CA-N

There are no ring outliers.

No monomer is involved in short contacts.

5.5 Carbohydrates [i](#)

There are no carbohydrates in this entry.

5.6 Ligand geometry [i](#)

12 ligands are modelled in this entry.

In the following table, the Counts columns list the number of bonds (or angles) for which Mogul statistics could be retrieved, the number of bonds (or angles) that are observed in the model and the number of bonds (or angles) that are defined in the chemical component dictionary. The Link column lists molecule types, if any, to which the group is linked. The Z score for a bond length (or angle) is the number of standard deviations the observed value is removed from the expected value. A bond length (or angle) with $|Z| > 2$ is considered an outlier worth inspection. RMSZ is the root-mean-square of all Z scores of the bond lengths (or angles).

Mol	Type	Chain	Res	Link	Bond lengths			Bond angles		
					Counts	RMSZ	# Z > 2	Counts	RMSZ	# Z > 2
4	NAP	A	301	-	45,52,52	1.05	2 (4%)	55,80,80	1.74	11 (20%)
5	3KN	A	302	-	10,14,14	1.69	3 (30%)	8,19,19	2.75	4 (50%)
6	ACT	A	303	-	0,3,3	0.00	-	0,3,3	0.00	-
4	NAP	B	301	-	45,52,52	1.09	4 (8%)	55,80,80	1.84	12 (21%)
5	3KN	B	302	-	10,14,14	2.26	3 (30%)	8,19,19	2.40	4 (50%)
4	NAP	C	301	-	45,52,52	0.91	1 (2%)	55,80,80	1.81	10 (18%)
5	3KN	C	302	-	10,14,14	2.63	3 (30%)	8,19,19	2.54	4 (50%)
6	ACT	C	303	-	0,3,3	0.00	-	0,3,3	0.00	-
7	GOL	C	304	-	5,5,5	0.32	0	5,5,5	0.54	0
4	NAP	D	301	-	45,52,52	1.11	4 (8%)	55,80,80	1.71	9 (16%)
5	3KN	D	302	-	10,14,14	2.28	4 (40%)	8,19,19	2.60	4 (50%)
7	GOL	D	303	-	5,5,5	0.65	0	5,5,5	0.63	0

In the following table, the Chirals column lists the number of chiral outliers, the number of chiral centers analysed, the number of these observed in the model and the number defined in the chemical component dictionary. Similar counts are reported in the Torsion and Rings columns. '-' means no outliers of that kind were identified.

Mol	Type	Chain	Res	Link	Chirals	Torsions	Rings
4	NAP	A	301	-	-	0/27/67/67	0/5/5/5
5	3KN	A	302	-	-	0/0/4/4	0/1/2/2

Continued on next page...

Continued from previous page...

Mol	Type	Chain	Res	Link	Chirals	Torsions	Rings
6	ACT	A	303	-	-	0/0/0/0	0/0/0/0
4	NAP	B	301	-	-	0/27/67/67	0/5/5/5
5	3KN	B	302	-	-	0/0/4/4	0/1/2/2
4	NAP	C	301	-	-	0/27/67/67	0/5/5/5
5	3KN	C	302	-	-	0/0/4/4	0/1/2/2
6	ACT	C	303	-	-	0/0/0/0	0/0/0/0
7	GOL	C	304	-	-	0/4/4/4	0/0/0/0
4	NAP	D	301	-	-	0/27/67/67	0/5/5/5
5	3KN	D	302	-	-	0/0/4/4	0/1/2/2
7	GOL	D	303	-	-	0/4/4/4	0/0/0/0

All (24) bond length outliers are listed below:

Mol	Chain	Res	Type	Atoms	Z	Observed(Å)	Ideal(Å)
5	C	302	3KN	CAE-SAA	-6.72	1.64	1.73
5	B	302	3KN	CAE-SAA	-4.89	1.66	1.73
5	D	302	3KN	CAE-SAA	-4.12	1.68	1.73
5	D	302	3KN	NAD-NAC	-3.27	1.31	1.37
5	A	302	3KN	CAL-NAM	-2.06	1.31	1.37
4	D	301	NAP	C7N-N7N	2.10	1.37	1.33
4	B	301	NAP	C2A-N1A	2.17	1.38	1.33
4	B	301	NAP	O3D-C3D	2.33	1.48	1.43
5	C	302	3KN	CAL-NAK	2.41	1.40	1.33
4	D	301	NAP	C2A-N3A	2.42	1.36	1.32
4	A	301	NAP	C2A-N3A	2.44	1.36	1.32
5	D	302	3KN	CAL-NAK	2.47	1.41	1.33
4	D	301	NAP	O4D-C1D	2.55	1.44	1.41
4	B	301	NAP	C2A-N3A	2.57	1.36	1.32
5	A	302	3KN	CAL-NAK	2.79	1.42	1.33
4	A	301	NAP	C5A-C4A	2.94	1.47	1.40
5	B	302	3KN	CAL-NAK	3.06	1.42	1.33
5	C	302	3KN	CAJ-NAK	3.10	1.41	1.34
4	C	301	NAP	C5A-C4A	3.49	1.48	1.40
4	D	301	NAP	C5A-C4A	3.55	1.48	1.40
5	D	302	3KN	CAJ-NAK	3.62	1.42	1.34
5	B	302	3KN	CAJ-NAK	3.68	1.42	1.34
4	B	301	NAP	C5A-C4A	3.72	1.48	1.40
5	A	302	3KN	CAJ-NAK	3.80	1.42	1.34

All (58) bond angle outliers are listed below:

Mol	Chain	Res	Type	Atoms	Z	Observed(°)	Ideal(°)
4	B	301	NAP	N3A-C2A-N1A	-7.60	122.90	128.87
4	C	301	NAP	N3A-C2A-N1A	-7.08	123.31	128.87
4	A	301	NAP	N3A-C2A-N1A	-6.63	123.66	128.87
4	D	301	NAP	N3A-C2A-N1A	-6.61	123.68	128.87
5	A	302	3KN	CAG-CAJ-NAK	-5.75	117.73	124.79
5	C	302	3KN	CAG-CAJ-NAK	-5.03	118.61	124.79
4	D	301	NAP	C1B-N9A-C4A	-5.01	121.21	126.81
5	B	302	3KN	CAG-CAJ-NAK	-4.95	118.72	124.79
4	B	301	NAP	C1B-N9A-C4A	-4.94	121.30	126.81
5	D	302	3KN	CAG-CAJ-NAK	-4.81	118.88	124.79
4	C	301	NAP	C1B-N9A-C4A	-4.27	122.04	126.81
4	A	301	NAP	C1B-N9A-C4A	-4.04	122.29	126.81
4	D	301	NAP	C4B-O4B-C1B	-4.02	105.38	109.64
4	C	301	NAP	O2B-P2B-O1X	-3.61	98.86	107.48
5	C	302	3KN	CAG-CAI-NAM	-3.48	114.60	121.78
5	D	302	3KN	CAH-CAL-NAK	-3.33	117.87	123.64
5	A	302	3KN	CAG-CAI-NAM	-3.02	115.56	121.78
4	A	301	NAP	C4B-O4B-C1B	-3.02	106.44	109.64
5	D	302	3KN	CAG-CAI-NAM	-2.98	115.64	121.78
4	B	301	NAP	C4B-O4B-C1B	-2.91	106.56	109.64
4	B	301	NAP	O7N-C7N-C3N	-2.85	116.43	119.60
5	A	302	3KN	CAH-CAL-NAK	-2.80	118.79	123.64
4	D	301	NAP	C2B-C1B-N9A	-2.78	105.54	113.48
5	B	302	3KN	CAG-CAI-NAM	-2.76	116.10	121.78
4	C	301	NAP	C4B-O4B-C1B	-2.69	106.79	109.64
4	C	301	NAP	O7N-C7N-C3N	-2.63	116.68	119.60
4	A	301	NAP	O2B-P2B-O1X	-2.61	101.24	107.48
4	B	301	NAP	C2B-C1B-N9A	-2.57	106.13	113.48
5	B	302	3KN	CAH-CAL-NAK	-2.56	119.21	123.64
4	B	301	NAP	O2B-P2B-O1X	-2.49	101.53	107.48
4	A	301	NAP	C2D-C1D-N1N	-2.42	108.80	113.53
4	A	301	NAP	O4B-C4B-C3B	-2.39	100.31	105.16
4	A	301	NAP	O7N-C7N-C3N	-2.36	116.98	119.60
4	C	301	NAP	C2B-C1B-N9A	-2.35	106.76	113.48
4	D	301	NAP	O2B-P2B-O1X	-2.31	101.96	107.48
5	C	302	3KN	CAH-CAL-NAK	-2.30	119.65	123.64
4	D	301	NAP	O3X-P2B-O2X	2.06	114.99	107.44
4	B	301	NAP	C2A-N1A-C6A	2.09	122.50	118.77
4	B	301	NAP	O3X-P2B-O2X	2.16	115.38	107.44
4	B	301	NAP	C3N-C7N-N7N	2.40	120.54	117.82
4	A	301	NAP	N6A-C6A-N1A	2.40	122.54	118.52
5	C	302	3KN	CAL-NAK-CAJ	2.41	121.24	116.82
4	C	301	NAP	C2A-N1A-C6A	2.41	123.07	118.77

Continued on next page...

Continued from previous page...

Mol	Chain	Res	Type	Atoms	Z	Observed(°)	Ideal(°)
4	B	301	NAP	N6A-C6A-N1A	2.45	122.62	118.52
4	A	301	NAP	O2X-P2B-O1X	2.45	118.62	110.63
5	B	302	3KN	CAL-NAK-CAJ	2.66	121.71	116.82
4	D	301	NAP	P2B-O2B-C2B	2.76	128.64	121.56
4	B	301	NAP	O4D-C1D-N1N	2.89	111.22	108.10
4	C	301	NAP	O4D-C1D-N1N	2.93	111.27	108.10
4	A	301	NAP	O4D-C1D-N1N	3.03	111.38	108.10
4	D	301	NAP	O4D-C1D-N1N	3.04	111.39	108.10
5	D	302	3KN	CAL-NAK-CAJ	3.11	122.54	116.82
5	A	302	3KN	CAL-NAK-CAJ	3.24	122.78	116.82
4	C	301	NAP	O4B-C1B-N9A	3.72	115.12	108.11
4	C	301	NAP	C3N-C7N-N7N	3.72	122.03	117.82
4	D	301	NAP	O4B-C1B-N9A	3.75	115.19	108.11
4	B	301	NAP	O4B-C1B-N9A	4.58	116.75	108.11
4	A	301	NAP	O4B-C1B-N9A	4.76	117.10	108.11

There are no chirality outliers.

There are no torsion outliers.

There are no ring outliers.

11 monomers are involved in 18 short contacts:

Mol	Chain	Res	Type	Clashes	Symm-Clashes
4	A	301	NAP	1	0
5	A	302	3KN	1	0
6	A	303	ACT	1	0
4	B	301	NAP	1	0
5	B	302	3KN	1	0
4	C	301	NAP	1	0
5	C	302	3KN	3	0
7	C	304	GOL	5	0
4	D	301	NAP	1	0
5	D	302	3KN	1	0
7	D	303	GOL	2	0

5.7 Other polymers ⓘ

There are no such residues in this entry.

5.8 Polymer linkage issues ⓘ

There are no chain breaks in this entry.

6 Fit of model and data ⓘ

6.1 Protein, DNA and RNA chains ⓘ

In the following table, the column labelled ‘#RSRZ> 2’ contains the number (and percentage) of RSRZ outliers, followed by percent RSRZ outliers for the chain as percentile scores relative to all X-ray entries and entries of similar resolution. The OWAB column contains the minimum, median, 95th percentile and maximum values of the occupancy-weighted average B-factor per residue. The column labelled ‘Q< 0.9’ lists the number of (and percentage) of residues with an average occupancy less than 0.9.

Mol	Chain	Analysed	<RSRZ>	#RSRZ>2	OWAB(Å ²)	Q<0.9
1	A	247/268 (92%)	-0.02	5 (2%) 68 75	12, 25, 49, 63	0
1	D	248/268 (92%)	-0.03	3 (1%) 81 86	14, 25, 54, 80	0
2	B	244/268 (91%)	-0.15	3 (1%) 81 86	13, 23, 48, 75	0
3	C	244/268 (91%)	-0.00	6 (2%) 61 69	15, 26, 57, 96	0
All	All	983/1072 (91%)	-0.05	17 (1%) 73 79	12, 25, 52, 96	0

All (17) RSRZ outliers are listed below:

Mol	Chain	Res	Type	RSRZ
3	C	212	ALA	5.5
3	C	210	PRO	3.5
2	B	113	GLY	3.2
3	C	214	GLY	3.1
2	B	213	MET	2.9
1	D	104	GLN	2.8
3	C	213	MET	2.8
2	B	212	ALA	2.7
1	A	212	ALA	2.6
1	A	54	ASN	2.5
1	A	30	VAL	2.5
1	D	27	GLY	2.4
1	A	56	ALA	2.4
1	D	211	VAL	2.4
3	C	228	GLY	2.3
3	C	208	LEU	2.3
1	A	3	ALA	2.0

6.2 Non-standard residues in protein, DNA, RNA chains [i](#)

In the following table, the Atoms column lists the number of modelled atoms in the group and the number defined in the chemical component dictionary. LLDF column lists the quality of electron density of the group with respect to its neighbouring residues in protein, DNA or RNA chains. The B-factors column lists the minimum, median, 95th percentile and maximum values of B factors of atoms in the group. The column labelled 'Q< 0.9' lists the number of atoms with occupancy less than 0.9.

Mol	Type	Chain	Res	Atoms	RSCC	RSR	LLDF	B-factors(Å ²)	Q<0.9
3	OCS	C	59	9/10	0.97	0.09	-	28,30,35,37	0
1	CSX	A	59	7/8	0.90	0.09	-	32,33,35,37	0
1	CSX	D	168	7/8	0.91	0.09	-	26,29,38,44	0
3	CSX	C	168	7/8	0.92	0.10	-	24,28,37,43	0
2	CSX	B	168	7/8	0.94	0.10	-	24,28,38,42	0
1	CSX	A	168	7/8	0.92	0.10	-	28,31,41,48	0
2	CSX	B	73	7/8	0.99	0.11	-	23,26,29,32	0
1	CSX	D	59	7/8	0.93	0.09	-	25,30,30,34	0
2	OCS	B	59	9/10	0.96	0.09	-	22,25,41,43	0

6.3 Carbohydrates [i](#)

There are no carbohydrates in this entry.

6.4 Ligands [i](#)

In the following table, the Atoms column lists the number of modelled atoms in the group and the number defined in the chemical component dictionary. LLDF column lists the quality of electron density of the group with respect to its neighbouring residues in protein, DNA or RNA chains. The B-factors column lists the minimum, median, 95th percentile and maximum values of B factors of atoms in the group. The column labelled 'Q< 0.9' lists the number of atoms with occupancy less than 0.9.

Mol	Type	Chain	Res	Atoms	RSCC	RSR	LLDF	B-factors(Å ²)	Q<0.9
7	GOL	D	303	6/6	0.73	0.28	44.61	35,45,48,54	0
7	GOL	C	304	6/6	0.92	0.14	3.49	42,44,47,47	0
5	3KN	C	302	13/13	0.76	0.33	3.18	36,38,41,43	13
5	3KN	A	302	13/13	0.80	0.17	2.24	27,35,41,44	13
5	3KN	D	302	13/13	0.79	0.17	1.52	23,32,37,40	13
4	NAP	C	301	48/48	0.87	0.15	1.50	24,34,44,45	48
5	3KN	B	302	13/13	0.87	0.14	1.18	31,36,42,46	13
6	ACT	C	303	4/4	0.91	0.13	0.92	31,32,34,35	0
4	NAP	B	301	48/48	0.95	0.10	0.22	24,30,37,39	0

Continued on next page...

Continued from previous page...

Mol	Type	Chain	Res	Atoms	RSCC	RSR	LLDF	B-factors(\AA^2)	Q<0.9
6	ACT	A	303	4/4	0.92	0.16	-0.03	36,38,40,46	0
4	NAP	A	301	48/48	0.97	0.08	-0.65	20,26,32,35	0
4	NAP	D	301	48/48	0.97	0.08	-0.65	21,28,34,35	0

6.5 Other polymers [i](#)

There are no such residues in this entry.