



# Full wwPDB X-ray Structure Validation Report ⓘ

Feb 1, 2016 – 06:15 AM GMT

PDB ID : 2WEU  
Title : CRYSTAL STRUCTURE OF TRYPTOPHAN 5-HALOGENASE (PYRH)  
COMPLEX WITH SUBSTRATE TRYPTOPHAN  
Authors : Leang, K.; Zhu, X.; Naismith, J.H.  
Deposited on : 2009-04-01  
Resolution : 1.70 Å(reported)

This is a Full wwPDB X-ray Structure Validation Report for a publicly released PDB entry.  
We welcome your comments at [validation@mail.wwpdb.org](mailto:validation@mail.wwpdb.org)  
A user guide is available at  
<http://wwpdb.org/validation/2016/XrayValidationReportHelp>  
with specific help available everywhere you see the ⓘ symbol.

---

The following versions of software and data (see [references ⓘ](#)) were used in the production of this report:

MolProbity : 4.02b-467  
Mogul : 1.7 (RC4), CSD as536be (2015)  
Xtriage (Phenix) : 1.9-1692  
EDS : rb-20026688  
Percentile statistics : 20151230.v01 (using entries in the PDB archive December 30th 2015)  
Refmac : 5.8.0135  
CCP4 : 6.5.0  
Ideal geometry (proteins) : Engh & Huber (2001)  
Ideal geometry (DNA, RNA) : Parkinson et al. (1996)  
Validation Pipeline (wwPDB-VP) : trunk26865

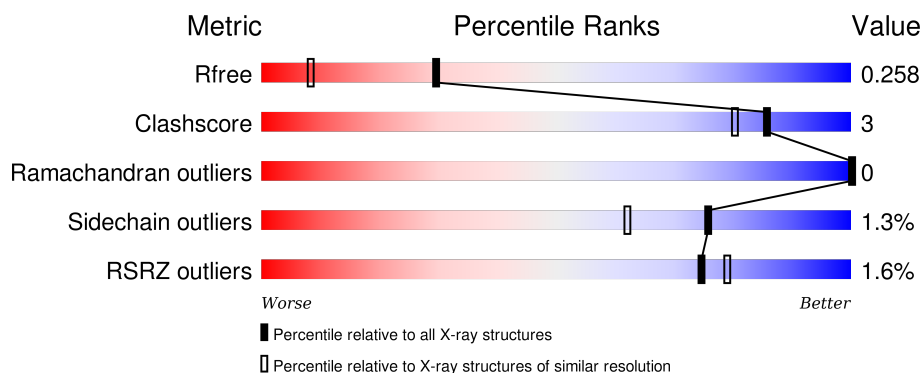
# 1 Overall quality at a glance

The following experimental techniques were used to determine the structure:

## *X-RAY DIFFRACTION*

The reported resolution of this entry is 1.70 Å.

Percentile scores (ranging between 0-100) for global validation metrics of the entry are shown in the following graphic. The table shows the number of entries on which the scores are based.



Metric	Whole archive (#Entries)	Similar resolution (#Entries, resolution range(Å))
$R_{free}$	91344	3190 (1.70-1.70)
Clashscore	102246	3585 (1.70-1.70)
Ramachandran outliers	100387	3527 (1.70-1.70)
Sidechain outliers	100360	3527 (1.70-1.70)
RSRZ outliers	91569	3200 (1.70-1.70)

The table below summarises the geometric issues observed across the polymeric chains and their fit to the electron density. The red, orange, yellow and green segments on the lower bar indicate the fraction of residues that contain outliers for  $\geq 3$ , 2, 1 and 0 types of geometric quality criteria. A grey segment represents the fraction of residues that are not modelled. The numeric value for each fraction is indicated below the corresponding segment, with a dot representing fractions  $\leq 5\%$ . The upper red bar (where present) indicates the fraction of residues that have poor fit to the electron density. The numeric value is given above the bar.

Mol	Chain	Length	Quality of chain
1	A	511	<div> <div></div> <div>92% 5% .</div> </div>
1	B	511	<div> <div>3%</div> <div>90% 7% .</div> </div>
1	C	511	<div> <div>2%</div> <div>89% 8% .</div> </div>
1	D	511	<div> <div>2%</div> <div>92% 5% .</div> </div>

## 2 Entry composition [i](#)

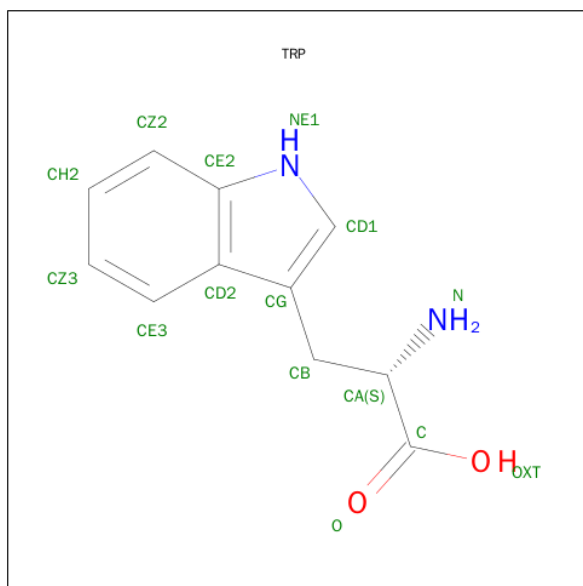
There are 3 unique types of molecules in this entry. The entry contains 17519 atoms, of which 0 are hydrogens and 0 are deuteriums.

In the tables below, the ZeroOcc column contains the number of atoms modelled with zero occupancy, the AltConf column contains the number of residues with at least one atom in alternate conformation and the Trace column contains the number of residues modelled with at most 2 atoms.

- Molecule 1 is a protein called TRYPTOPHAN 5-HALOGENASE.

Mol	Chain	Residues	Atoms					ZeroOcc	AltConf	Trace
1	A	494	Total	C	N	O	S	0	2	0
			3987	2537	697	733	20			
1	B	499	Total	C	N	O	S	0	0	0
			4012	2549	706	738	19			
1	C	499	Total	C	N	O	S	0	1	0
			4013	2549	705	740	19			
1	D	498	Total	C	N	O	S	0	0	0
			3995	2540	699	737	19			

- Molecule 2 is TRYPTOPHAN (three-letter code: TRP) (formula:  $C_{11}H_{12}N_2O_2$ ).



Mol	Chain	Residues	Atoms				ZeroOcc	AltConf
2	A	1	Total	C	N	O	0	0
			15	11	2	2		
2	B	1	Total	C	N	O	0	0
			15	11	2	2		

*Continued on next page...*

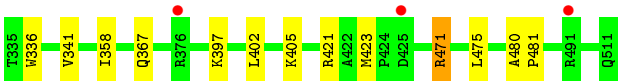
*Continued from previous page...*

Mol	Chain	Residues	Atoms				ZeroOcc	AltConf
2	C	1	Total	C	N	O	0	0
			15	11	2	2		
2	D	1	Total	C	N	O	0	0
			15	11	2	2		

- Molecule 3 is water.

Mol	Chain	Residues	Atoms		ZeroOcc	AltConf
3	A	393	Total	O	0	0
			393	393		
3	B	368	Total	O	0	0
			368	368		
3	C	365	Total	O	0	0
			365	365		
3	D	326	Total	O	0	0
			326	326		





## 4 Data and refinement statistics

Property	Value	Source
Space group	P 21 21 21	Depositor
Cell constants a, b, c, $\alpha$ , $\beta$ , $\gamma$	142.70Å 141.08Å 122.95Å 90.00° 90.00° 90.00°	Depositor
Resolution (Å)	100.50 – 1.70 29.39 – 1.70	Depositor EDS
% Data completeness (in resolution range)	88.5 (100.50-1.70) 88.5 (29.39-1.70)	Depositor EDS
$R_{merge}$	0.08	Depositor
$R_{sym}$	(Not available)	Depositor
$\langle I/\sigma(I) \rangle$ <sup>1</sup>	0.94 (at 1.70Å)	Xtriage
Refinement program	REFMAC 5.5.0070	Depositor
R, $R_{free}$	0.215 , 0.248 0.224 , 0.258	Depositor DCC
$R_{free}$ test set	13670 reflections (5.98%)	DCC
Wilson B-factor (Å <sup>2</sup> )	17.0	Xtriage
Anisotropy	0.081	Xtriage
Bulk solvent $k_{sol}$ (e/Å <sup>3</sup> ), $B_{sol}$ (Å <sup>2</sup> )	0.35 , 24.6	EDS
Estimated twinning fraction	0.240 for k,h,-l	Xtriage
L-test for twinning <sup>2</sup>	$\langle  L  \rangle = 0.43$ , $\langle L^2 \rangle = 0.26$	Xtriage
Outliers	1 of 240882 reflections (0.000%)	Xtriage
$F_o, F_c$ correlation	0.94	EDS
Total number of atoms	17519	wwPDB-VP
Average B, all atoms (Å <sup>2</sup> )	15.0	wwPDB-VP

Xtriage's analysis on translational NCS is as follows: *The largest off-origin peak in the Patterson function is 2.94% of the height of the origin peak. No significant pseudotranslation is detected.*

<sup>1</sup>Intensities estimated from amplitudes.

<sup>2</sup>Theoretical values of  $\langle |L| \rangle$ ,  $\langle L^2 \rangle$  for acentric reflections are 0.5, 0.375 respectively for untwinned datasets, and 0.333, 0.2 for perfectly twinned datasets.

## 5 Model quality

### 5.1 Standard geometry

The Z score for a bond length (or angle) is the number of standard deviations the observed value is removed from the expected value. A bond length (or angle) with  $|Z| > 5$  is considered an outlier worth inspection. RMSZ is the root-mean-square of all Z scores of the bond lengths (or angles).

Mol	Chain	Bond lengths		Bond angles	
		RMSZ	$\# Z  > 5$	RMSZ	$\# Z  > 5$
1	A	0.61	0/4093	0.70	2/5548 (0.0%)
1	B	0.62	0/4119	0.69	2/5583 (0.0%)
1	C	0.62	0/4119	0.71	2/5583 (0.0%)
1	D	0.61	1/4101 (0.0%)	0.69	1/5559 (0.0%)
All	All	0.62	1/16432 (0.0%)	0.70	7/22273 (0.0%)

Chiral center outliers are detected by calculating the chiral volume of a chiral center and verifying if the center is modelled as a planar moiety or with the opposite hand. A planarity outlier is detected by checking planarity of atoms in a peptide group, atoms in a mainchain group or atoms of a sidechain that are expected to be planar.

Mol	Chain	#Chirality outliers	#Planarity outliers
1	D	0	1

All (1) bond length outliers are listed below:

Mol	Chain	Res	Type	Atoms	Z	Observed(Å)	Ideal(Å)
1	D	367	GLN	CD-NE2	-5.43	1.19	1.32

All (7) bond angle outliers are listed below:

Mol	Chain	Res	Type	Atoms	Z	Observed(°)	Ideal(°)
1	D	471	ARG	NE-CZ-NH2	-7.38	116.61	120.30
1	A	471	ARG	NE-CZ-NH2	-7.14	116.73	120.30
1	C	260	ARG	NE-CZ-NH2	-6.92	116.84	120.30
1	B	260	ARG	NE-CZ-NH2	-6.14	117.23	120.30
1	C	260	ARG	NE-CZ-NH1	5.42	123.01	120.30
1	A	44	VAL	CG1-CB-CG2	5.38	119.50	110.90
1	B	309	LEU	CD1-CG-CD2	-5.20	94.89	110.50

There are no chirality outliers.

All (1) planarity outliers are listed below:



Mol	Chain	Res	Type	Group
1	D	113	GLY	Peptide

## 5.2 Too-close contacts ⓘ

In the following table, the Non-H and H(model) columns list the number of non-hydrogen atoms and hydrogen atoms in the chain respectively. The H(added) column lists the number of hydrogen atoms added and optimized by MolProbity. The Clashes column lists the number of clashes within the asymmetric unit, whereas Symm-Clashes lists symmetry related clashes.

Mol	Chain	Non-H	H(model)	H(added)	Clashes	Symm-Clashes
1	A	3987	0	3824	16	0
1	B	4012	0	3851	25	0
1	C	4013	0	3845	29	0
1	D	3995	0	3829	19	0
2	A	15	0	9	0	0
2	B	15	0	9	0	0
2	C	15	0	9	0	0
2	D	15	0	9	0	0
3	A	393	0	0	2	0
3	B	368	0	0	6	0
3	C	365	0	0	10	0
3	D	326	0	0	8	0
All	All	17519	0	15385	87	0

The all-atom clashscore is defined as the number of clashes found per 1000 atoms (including hydrogen atoms). The all-atom clashscore for this structure is 3.

All (87) close contacts within the same asymmetric unit are listed below, sorted by their clash magnitude.

Atom-1	Atom-2	Interatomic distance (Å)	Clash overlap (Å)
1:D:125:LEU:O	1:D:129:LEU:HD13	1.67	0.95
1:B:423:MET:HE2	1:B:427:LEU:HD23	1.56	0.87
1:A:125:LEU:O	1:A:129:LEU:HD13	1.76	0.84
1:C:423:MET:HE3	1:C:427:LEU:HD23	1.59	0.83
1:C:44:VAL:HG23	3:C:2007:HOH:O	1.78	0.82
1:A:405:LYS:HE3	1:A:423[A]:MET:HE3	1.68	0.75
1:D:402:LEU:HG	3:D:2232:HOH:O	1.87	0.74
1:D:325:ILE:HD13	3:D:2184:HOH:O	1.90	0.70
1:C:419:LYS:HE2	3:C:2295:HOH:O	1.90	0.70
1:B:423:MET:CE	1:B:427:LEU:HD23	2.21	0.70
1:C:267:ARG:NH2	1:C:282:THR:HG21	2.11	0.66

*Continued on next page...*

*Continued from previous page...*

Atom-1	Atom-2	Interatomic distance (Å)	Clash overlap (Å)
1:B:260:ARG:HD2	3:B:2213:HOH:O	1.95	0.66
1:B:12:THR:HG21	1:B:358:ILE:CD1	2.29	0.62
1:D:12:THR:HG21	1:D:358:ILE:CD1	2.29	0.62
1:C:423:MET:CE	1:C:427:LEU:HD23	2.29	0.62
1:B:128:ARG:NH2	1:B:494:ASP:OD1	2.27	0.60
1:B:370:LYS:HG3	3:B:2264:HOH:O	2.01	0.59
1:D:475:LEU:HG	3:D:2298:HOH:O	2.02	0.59
1:C:128:ARG:NH2	1:C:494:ASP:OD1	2.25	0.58
1:B:267:ARG:NH2	1:B:282:THR:HG21	2.19	0.57
1:A:12:THR:HG21	1:A:358:ILE:CD1	2.34	0.57
1:C:12:THR:HG21	1:C:358:ILE:CD1	2.34	0.57
1:A:480:ALA:HB3	1:A:481:PRO:HD3	1.88	0.56
1:C:44:VAL:CG2	3:C:2007:HOH:O	2.46	0.55
1:A:336:TRP:CG	1:A:341:VAL:HG22	2.42	0.54
1:B:260:ARG:CD	3:B:2213:HOH:O	2.52	0.54
1:D:242:GLN:NE2	3:D:2134:HOH:O	2.19	0.53
1:D:336:TRP:CG	1:D:341:VAL:HG22	2.43	0.53
1:C:336:TRP:CG	1:C:341:VAL:HG22	2.43	0.53
1:B:298:GLU:HB3	3:B:2215:HOH:O	2.08	0.53
1:D:480:ALA:HB3	1:D:481:PRO:HD3	1.91	0.52
1:D:405:LYS:HE3	1:D:423:MET:CE	2.39	0.52
1:C:334:ARG:NH1	3:C:2241:HOH:O	2.32	0.51
1:A:267:ARG:NH1	3:A:2194:HOH:O	2.44	0.50
1:C:402:LEU:HD11	1:C:460:ASN:OD1	2.12	0.49
1:C:39:VAL:HG11	3:C:2018:HOH:O	2.11	0.49
1:D:336:TRP:CD2	1:D:341:VAL:HG22	2.48	0.48
1:D:334:ARG:NH1	3:D:2191:HOH:O	2.45	0.48
1:C:336:TRP:CD2	1:C:341:VAL:HG22	2.48	0.48
1:B:249:PRO:HG3	1:B:421:ARG:CZ	2.44	0.47
1:A:440:ASP:CG	1:B:388:ARG:HH21	2.18	0.47
1:D:471:ARG:NH2	3:D:2299:HOH:O	2.43	0.47
1:C:81:GLU:HB3	1:C:89:TYR:HB3	1.96	0.47
1:A:267:ARG:NH2	1:A:282:THR:HG21	2.30	0.47
1:C:28:ARG:NH2	3:C:2013:HOH:O	2.48	0.47
1:B:286:PHE:O	1:B:287:LYS:HB2	2.15	0.47
1:A:88[A]:GLU:HA	1:A:88[A]:GLU:OE1	2.15	0.47
1:C:260:ARG:HD2	3:C:2211:HOH:O	2.15	0.46
1:B:325:ILE:HD13	3:B:2232:HOH:O	2.16	0.46
1:C:260:ARG:CD	3:C:2211:HOH:O	2.64	0.46
1:A:471:ARG:NH2	3:A:2364:HOH:O	2.48	0.46
1:C:249:PRO:HG3	1:C:421:ARG:CZ	2.44	0.45

*Continued on next page...*

*Continued from previous page...*

Atom-1	Atom-2	Interatomic distance (Å)	Clash overlap (Å)
1:B:125:LEU:O	1:B:129:LEU:HD13	2.16	0.45
1:D:397:LYS:CE	3:D:2229:HOH:O	2.65	0.44
1:B:81:GLU:HB3	1:B:89:TYR:HB3	2.00	0.44
1:B:402:LEU:HD11	1:B:460:ASN:OD1	2.18	0.44
1:A:367:GLN:HE22	1:A:370:LYS:HD2	1.83	0.44
1:C:36:SER:OG	1:C:194:ASP:OD1	2.26	0.44
1:D:397:LYS:HE2	3:D:2229:HOH:O	2.17	0.44
1:D:267:ARG:NH2	1:D:282:THR:HG21	2.33	0.44
1:C:423:MET:HE1	1:C:431:LEU:HD11	2.00	0.43
1:C:286:PHE:O	1:C:287:LYS:HB2	2.18	0.43
1:B:44:VAL:HG22	1:B:45:GLY:H	1.83	0.43
1:A:249:PRO:HG3	1:A:421:ARG:CZ	2.48	0.43
1:B:336:TRP:CG	1:B:341:VAL:HG22	2.53	0.43
1:A:336:TRP:CD2	1:A:341:VAL:HG22	2.53	0.43
1:B:51:THR:HB	1:B:157:LEU:HD23	2.00	0.43
1:C:45:GLY:N	3:C:2028:HOH:O	2.46	0.43
1:B:480:ALA:HB3	1:B:481:PRO:HD3	2.01	0.43
1:C:51:THR:HB	1:C:157:LEU:HD23	1.99	0.43
1:D:405:LYS:HE3	1:D:423:MET:HE2	2.00	0.42
1:C:125:LEU:O	1:C:129:LEU:HD13	2.19	0.42
1:B:67:LEU:HB3	1:B:68:PRO:HD3	2.01	0.42
1:D:249:PRO:HG3	1:D:421:ARG:CZ	2.49	0.42
1:B:61:LEU:HD13	1:B:178:TYR:HE2	1.84	0.42
1:B:267:ARG:NH1	3:B:2201:HOH:O	2.48	0.42
1:A:102:GLY:O	1:B:370:LYS:NZ	2.46	0.42
1:A:51:THR:HB	1:A:157:LEU:HD23	2.02	0.42
1:B:336:TRP:CD2	1:B:341:VAL:HG22	2.55	0.42
1:D:129:LEU:N	1:D:129:LEU:HD12	2.34	0.41
1:C:67:LEU:HB3	1:C:68:PRO:HD3	2.01	0.41
1:C:88:GLU:OE2	3:C:2063:HOH:O	2.22	0.41
1:C:44:VAL:HG22	1:C:45:GLY:H	1.86	0.41
1:A:12:THR:HG21	1:A:358:ILE:HD13	2.02	0.40
1:C:323:ASN:C	1:C:323:ASN:OD1	2.59	0.40
1:C:280:MET:HA	1:C:292:GLY:O	2.22	0.40
1:D:15:TRP:CE3	1:D:180:SER:HA	2.56	0.40

There are no symmetry-related clashes.

## 5.3 Torsion angles [i](#)

### 5.3.1 Protein backbone [i](#)

In the following table, the Percentiles column shows the percent Ramachandran outliers of the chain as a percentile score with respect to all X-ray entries followed by that with respect to entries of similar resolution.

The Analysed column shows the number of residues for which the backbone conformation was analysed, and the total number of residues.

Mol	Chain	Analysed	Favoured	Allowed	Outliers	Percentiles	
1	A	488/511 (96%)	474 (97%)	14 (3%)	0	100	100
1	B	493/511 (96%)	480 (97%)	13 (3%)	0	100	100
1	C	492/511 (96%)	475 (96%)	17 (4%)	0	100	100
1	D	490/511 (96%)	475 (97%)	15 (3%)	0	100	100
All	All	1963/2044 (96%)	1904 (97%)	59 (3%)	0	100	100

There are no Ramachandran outliers to report.

### 5.3.2 Protein sidechains [i](#)

In the following table, the Percentiles column shows the percent sidechain outliers of the chain as a percentile score with respect to all X-ray entries followed by that with respect to entries of similar resolution.

The Analysed column shows the number of residues for which the sidechain conformation was analysed, and the total number of residues.

Mol	Chain	Analysed	Rotameric	Outliers	Percentiles	
1	A	411/424 (97%)	407 (99%)	4 (1%)	82	72
1	B	414/424 (98%)	409 (99%)	5 (1%)	78	65
1	C	414/424 (98%)	409 (99%)	5 (1%)	78	65
1	D	412/424 (97%)	409 (99%)	3 (1%)	88	82
All	All	1651/1696 (97%)	1634 (99%)	17 (1%)	76	72

All (17) residues with a non-rotameric sidechain are listed below:

Mol	Chain	Res	Type
1	A	44	VAL
1	A	170	PHE

*Continued on next page...*

*Continued from previous page...*

Mol	Chain	Res	Type
1	A	293	TYR
1	A	325	ILE
1	B	44	VAL
1	B	53	ARG
1	B	170	PHE
1	B	293	TYR
1	B	471	ARG
1	C	44	VAL
1	C	53	ARG
1	C	170	PHE
1	C	293	TYR
1	C	471	ARG
1	D	170	PHE
1	D	293	TYR
1	D	325	ILE

Some sidechains can be flipped to improve hydrogen bonding and reduce clashes. All (2) such sidechains are listed below:

Mol	Chain	Res	Type
1	B	197	HIS
1	C	197	HIS

### 5.3.3 RNA [i](#)

There are no RNA molecules in this entry.

## 5.4 Non-standard residues in protein, DNA, RNA chains [i](#)

There are no non-standard protein/DNA/RNA residues in this entry.

## 5.5 Carbohydrates [i](#)

There are no carbohydrates in this entry.

## 5.6 Ligand geometry [i](#)

4 ligands are modelled in this entry.

In the following table, the Counts columns list the number of bonds (or angles) for which Mogul statistics could be retrieved, the number of bonds (or angles) that are observed in the model and the number of bonds (or angles) that are defined in the chemical component dictionary. The Link column lists molecule types, if any, to which the group is linked. The Z score for a bond length (or angle) is the number of standard deviations the observed value is removed from the expected value. A bond length (or angle) with  $|Z| > 2$  is considered an outlier worth inspection. RMSZ is the root-mean-square of all Z scores of the bond lengths (or angles).

Mol	Type	Chain	Res	Link	Bond lengths			Bond angles		
					Counts	RMSZ	$\# Z  > 2$	Counts	RMSZ	$\# Z  > 2$
2	TRP	A	1512	-	12,16,16	1.01	1 (8%)	7,22,22	0.94	0
2	TRP	B	1512	-	12,16,16	0.60	0	7,22,22	1.10	0
2	TRP	C	1512	-	12,16,16	0.77	0	7,22,22	0.93	0
2	TRP	D	1512	-	12,16,16	1.19	2 (16%)	7,22,22	0.82	0

In the following table, the Chirals column lists the number of chiral outliers, the number of chiral centers analysed, the number of these observed in the model and the number defined in the chemical component dictionary. Similar counts are reported in the Torsion and Rings columns. '-' means no outliers of that kind were identified.

Mol	Type	Chain	Res	Link	Chirals	Torsions	Rings
2	TRP	A	1512	-	-	0/3/8/8	0/2/2/2
2	TRP	B	1512	-	-	0/3/8/8	0/2/2/2
2	TRP	C	1512	-	-	0/3/8/8	0/2/2/2
2	TRP	D	1512	-	-	0/3/8/8	0/2/2/2

All (3) bond length outliers are listed below:

Mol	Chain	Res	Type	Atoms	Z	Observed(Å)	Ideal(Å)
2	D	1512	TRP	CZ2-CE2	-2.58	1.37	1.41
2	A	1512	TRP	CZ2-CE2	-2.38	1.37	1.41
2	D	1512	TRP	CD1-CG	-2.34	1.34	1.38

There are no bond angle outliers.

There are no chirality outliers.

There are no torsion outliers.

There are no ring outliers.

No monomer is involved in short contacts.

## 5.7 Other polymers ⓘ

There are no such residues in this entry.

## 5.8 Polymer linkage issues ⓘ

There are no chain breaks in this entry.

## 6 Fit of model and data ⓘ

### 6.1 Protein, DNA and RNA chains ⓘ

In the following table, the column labelled ‘#RSRZ> 2’ contains the number (and percentage) of RSRZ outliers, followed by percent RSRZ outliers for the chain as percentile scores relative to all X-ray entries and entries of similar resolution. The OWAB column contains the minimum, median, 95<sup>th</sup> percentile and maximum values of the occupancy-weighted average B-factor per residue. The column labelled ‘Q< 0.9’ lists the number of (and percentage) of residues with an average occupancy less than 0.9.

Mol	Chain	Analysed	<RSRZ>	#RSRZ>2	OWAB(Å <sup>2</sup> )	Q<0.9
1	A	494/511 (96%)	0.11	1 (0%) 95 95	9, 14, 23, 29	0
1	B	499/511 (97%)	0.22	13 (2%) 59 64	6, 14, 24, 31	0
1	C	499/511 (97%)	0.16	9 (1%) 71 76	7, 14, 24, 30	0
1	D	498/511 (97%)	0.20	8 (1%) 74 79	8, 14, 23, 30	0
All	All	1990/2044 (97%)	0.17	31 (1%) 74 79	6, 14, 23, 31	0

All (31) RSRZ outliers are listed below:

Mol	Chain	Res	Type	RSRZ
1	B	152	LEU	3.3
1	D	3	ARG	3.3
1	B	316	GLY	3.1
1	B	64	ARG	2.9
1	A	3	ARG	2.9
1	B	425	ASP	2.8
1	D	376	ARG	2.6
1	B	488	ARG	2.6
1	D	318	ASP	2.6
1	B	44	VAL	2.6
1	B	325	ILE	2.6
1	D	229	ARG	2.5
1	C	325	ILE	2.5
1	C	469	ARG	2.5
1	B	490	ARG	2.5
1	D	261	GLU	2.5
1	C	468	GLU	2.4
1	C	323	ASN	2.3
1	C	316	GLY	2.3
1	C	119	PHE	2.3
1	C	64	ARG	2.3

*Continued on next page...*



*Continued from previous page...*

Mol	Chain	Res	Type	RSRZ
1	D	491	ARG	2.3
1	C	491	ARG	2.3
1	B	3	ARG	2.2
1	D	323	ASN	2.2
1	C	39	VAL	2.2
1	B	151	SER	2.1
1	D	425	ASP	2.1
1	B	139	LEU	2.0
1	B	491	ARG	2.0
1	B	262	ASN	2.0

## 6.2 Non-standard residues in protein, DNA, RNA chains [i](#)

There are no non-standard protein/DNA/RNA residues in this entry.

## 6.3 Carbohydrates [i](#)

There are no carbohydrates in this entry.

## 6.4 Ligands [i](#)

In the following table, the Atoms column lists the number of modelled atoms in the group and the number defined in the chemical component dictionary. LLDF column lists the quality of electron density of the group with respect to its neighbouring residues in protein, DNA or RNA chains. The B-factors column lists the minimum, median, 95<sup>th</sup> percentile and maximum values of B factors of atoms in the group. The column labelled 'Q< 0.9' lists the number of atoms with occupancy less than 0.9.

Mol	Type	Chain	Res	Atoms	RSCC	RSR	LLDF	B-factors( $\text{\AA}^2$ )	Q<0.9
2	TRP	B	1512	15/15	0.96	0.10	0.46	9,10,11,12	0
2	TRP	A	1512	15/15	0.96	0.08	-0.12	9,9,11,11	0
2	TRP	D	1512	15/15	0.97	0.09	-0.35	9,10,11,12	0
2	TRP	C	1512	15/15	0.95	0.08	-0.37	9,10,11,11	0

## 6.5 Other polymers [i](#)

There are no such residues in this entry.