



Full wwPDB X-ray Structure Validation Report ⓘ

Feb 1, 2016 – 02:11 PM GMT

PDB ID : 3WFB
Title : Reduced cytochrome c-dependent nitric oxide reductase (cNOR) from *Pseudomonas aeruginosa* in complex with antibody fragment
Authors : Sato, N.; Ishii, S.; Hino, T.; Sugimoto, H.; Fukumori, Y.; Shiro, Y.; Tosha, T.
Deposited on : 2013-07-18
Resolution : 2.70 Å(reported)

This is a Full wwPDB X-ray Structure Validation Report for a publicly released PDB entry.
We welcome your comments at validation@mail.wwpdb.org
A user guide is available at
<http://wwpdb.org/validation/2016/XrayValidationReportHelp>
with specific help available everywhere you see the ⓘ symbol.

The following versions of software and data (see [references ⓘ](#)) were used in the production of this report:

MolProbity : 4.02b-467
Mogul : 1.7 (RC4), CSD as536be (2015)
Xtriage (Phenix) : 1.9-1692
EDS : rb-20026688
Percentile statistics : 20151230.v01 (using entries in the PDB archive December 30th 2015)
Refmac : 5.8.0135
CCP4 : 6.5.0
Ideal geometry (proteins) : Engh & Huber (2001)
Ideal geometry (DNA, RNA) : Parkinson et al. (1996)
Validation Pipeline (wwPDB-VP) : trunk26865

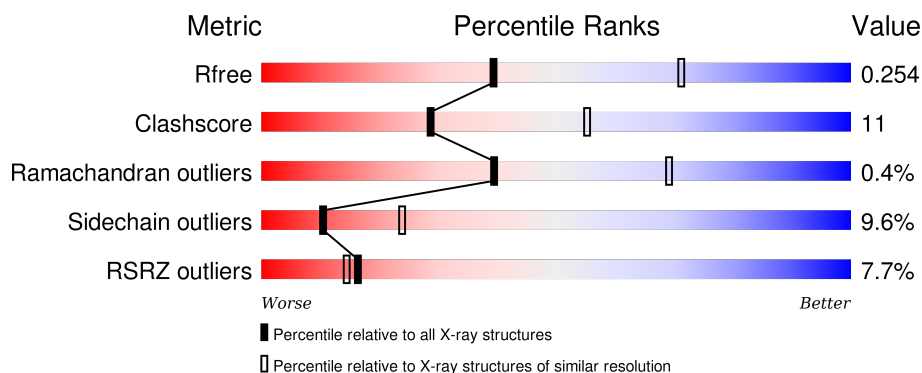
1 Overall quality at a glance

The following experimental techniques were used to determine the structure:

X-RAY DIFFRACTION

The reported resolution of this entry is 2.70 Å.

Percentile scores (ranging between 0-100) for global validation metrics of the entry are shown in the following graphic. The table shows the number of entries on which the scores are based.



Metric	Whole archive (#Entries)	Similar resolution (#Entries, resolution range(Å))
R_{free}	91344	2103 (2.70-2.70)
Clashscore	102246	2422 (2.70-2.70)
Ramachandran outliers	100387	2382 (2.70-2.70)
Sidechain outliers	100360	2382 (2.70-2.70)
RSRZ outliers	91569	2107 (2.70-2.70)

The table below summarises the geometric issues observed across the polymeric chains and their fit to the electron density. The red, orange, yellow and green segments on the lower bar indicate the fraction of residues that contain outliers for ≥ 3 , 2, 1 and 0 types of geometric quality criteria. A grey segment represents the fraction of residues that are not modelled. The numeric value for each fraction is indicated below the corresponding segment, with a dot representing fractions $\leq 5\%$. The upper red bar (where present) indicates the fraction of residues that have poor fit to the electron density. The numeric value is given above the bar.

Mol	Chain	Length	Quality of chain
1	L	213	<div> <div></div> <div>78%17%5%</div> </div>
2	H	225	<div> <div>3%</div> <div>78%17%</div> </div>
3	B	465	<div> <div>13%</div> <div>69%24%</div> </div>
4	C	146	<div> <div>8%</div> <div>67%27%</div> </div>

2 Entry composition

There are 10 unique types of molecules in this entry. The entry contains 8326 atoms, of which 0 are hydrogens and 0 are deuteriums.

In the tables below, the ZeroOcc column contains the number of atoms modelled with zero occupancy, the AltConf column contains the number of residues with at least one atom in alternate conformation and the Trace column contains the number of residues modelled with at most 2 atoms.

- Molecule 1 is a protein called antibody fab fragment light chain.

Mol	Chain	Residues	Atoms					ZeroOcc	AltConf	Trace
1	L	213	Total	C	N	O	S	0	0	0
			1669	1047	277	338	7			

- Molecule 2 is a protein called antibody fab fragment heavy chain.

Mol	Chain	Residues	Atoms					ZeroOcc	AltConf	Trace
2	H	225	Total	C	N	O	S	0	0	0
			1692	1065	280	338	9			

- Molecule 3 is a protein called Nitric oxide reductase subunit B.

Mol	Chain	Residues	Atoms					ZeroOcc	AltConf	Trace
3	B	449	Total	C	N	O	S	0	0	0
			3576	2416	563	572	25			

There is a discrepancy between the modelled and reference sequences:

Chain	Residue	Modelled	Actual	Comment	Reference
B	?	-	ARG	DELETION	UNP Q59647

- Molecule 4 is a protein called Nitric oxide reductase subunit C.

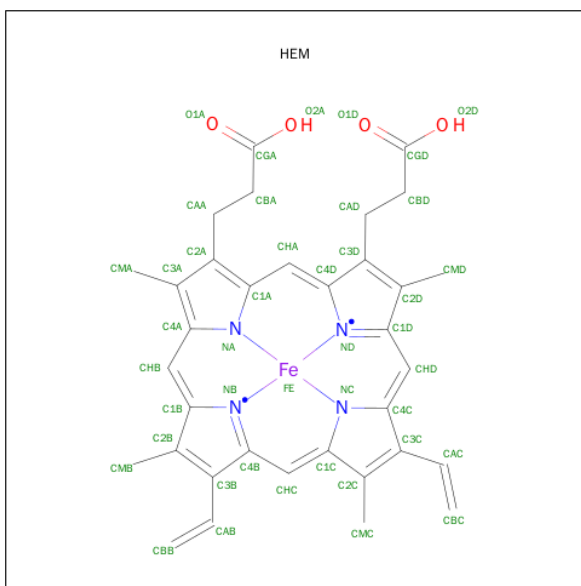
Mol	Chain	Residues	Atoms					ZeroOcc	AltConf	Trace
4	C	142	Total	C	N	O	S	0	0	0
			1123	720	195	202	6			

There is a discrepancy between the modelled and reference sequences:

Chain	Residue	Modelled	Actual	Comment	Reference
C	100	LYS	ASN	CONFLICT	UNP Q59646

- Molecule 5 is PROTOPORPHYRIN IX CONTAINING FE (three-letter code: HEM) (for-

mula: C₃₄H₃₂FeN₄O₄).



Mol	Chain	Residues	Atoms					ZeroOcc	AltConf
5	B	1	Total 43	C 34	Fe 1	N 4	O 4	0	0
5	B	1	Total 43	C 34	Fe 1	N 4	O 4	0	0

- Molecule 6 is FE (III) ION (three-letter code: FE) (formula: Fe).

Mol	Chain	Residues	Atoms	ZeroOcc	AltConf
6	B	1	Total Fe 1 1	0	0

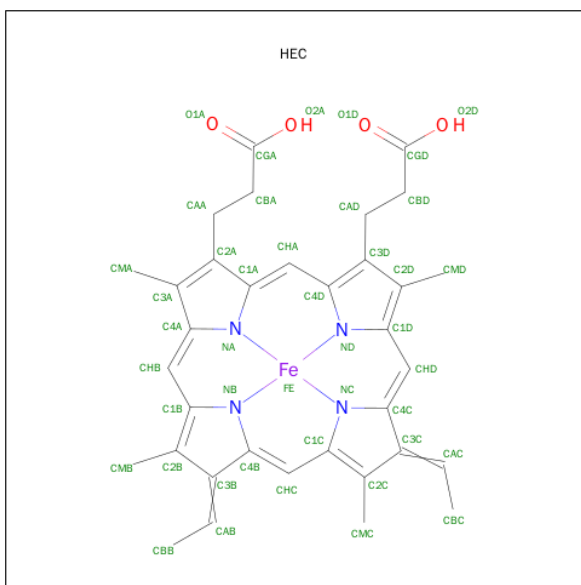
- Molecule 7 is CHLORIDE ION (three-letter code: CL) (formula: Cl).

Mol	Chain	Residues	Atoms	ZeroOcc	AltConf
7	B	1	Total Cl 1 1	0	0

- Molecule 8 is CALCIUM ION (three-letter code: CA) (formula: Ca).

Mol	Chain	Residues	Atoms	ZeroOcc	AltConf
8	B	1	Total Ca 1 1	0	0

- Molecule 9 is HEME C (three-letter code: HEC) (formula: $\text{C}_{34}\text{H}_{34}\text{FeN}_4\text{O}_4$).



Mol	Chain	Residues	Atoms					ZeroOcc	AltConf
9	C	1	Total	C	Fe	N	O	0	0
			43	34	1	4	4		

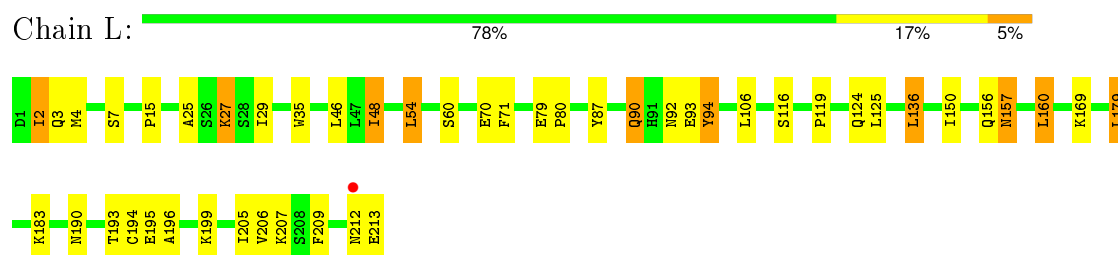
- Molecule 10 is water.

Mol	Chain	Residues	Atoms	ZeroOcc	AltConf
10	L	39	Total O 39 39	0	0
10	H	42	Total O 42 42	0	0
10	B	24	Total O 24 24	0	0
10	C	29	Total O 29 29	0	0

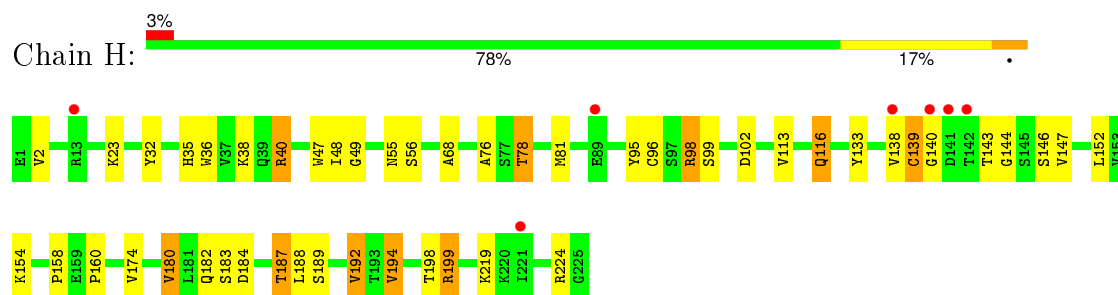
3 Residue-property plots [i](#)

These plots are drawn for all protein, RNA and DNA chains in the entry. The first graphic for a chain summarises the proportions of errors displayed in the second graphic. The second graphic shows the sequence view annotated by issues in geometry and electron density. Residues are color-coded according to the number of geometric quality criteria for which they contain at least one outlier: green = 0, yellow = 1, orange = 2 and red = 3 or more. A red dot above a residue indicates a poor fit to the electron density ($\text{RSRZ} > 2$). Stretches of 2 or more consecutive residues without any outlier are shown as a green connector. Residues present in the sample, but not in the model, are shown in grey.

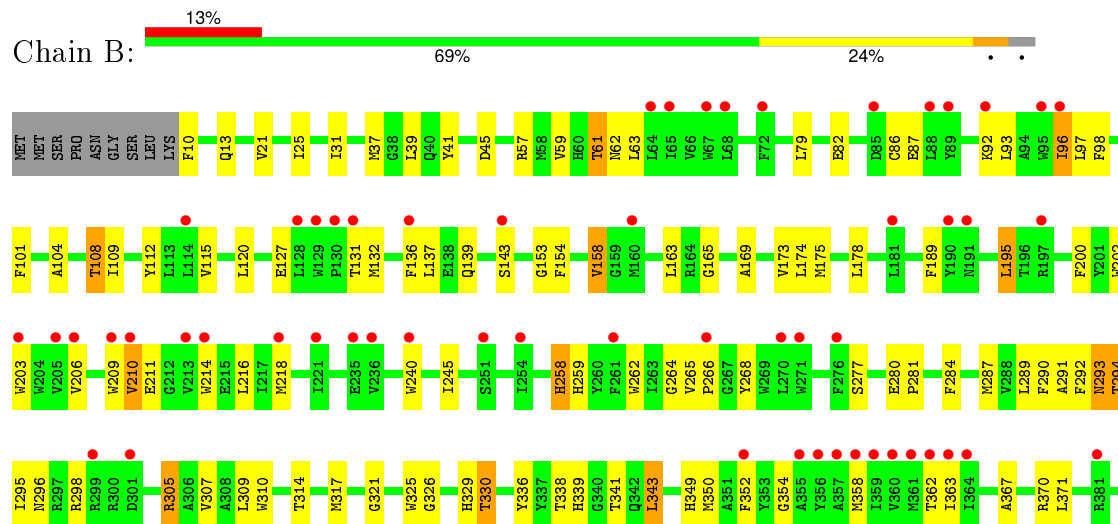
- Molecule 1: antibody fab fragment light chain



- Molecule 2: antibody fab fragment heavy chain

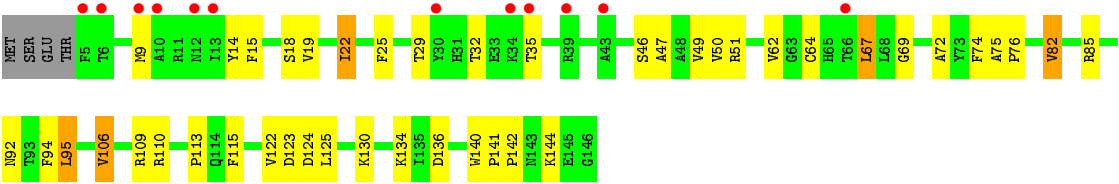


- Molecule 3: Nitric oxide reductase subunit B





● Molecule 4: Nitric oxide reductase subunit C



4 Data and refinement statistics

Property	Value	Source
Space group	P 21 21 21	Depositor
Cell constants a, b, c, α , β , γ	90.76Å 110.64Å 193.55Å 90.00° 90.00° 90.00°	Depositor
Resolution (Å)	41.07 – 2.70 41.03 – 2.70	Depositor EDS
% Data completeness (in resolution range)	99.4 (41.07-2.70) 99.4 (41.03-2.70)	Depositor EDS
R_{merge}	0.08	Depositor
R_{sym}	0.08	Depositor
$\langle I/\sigma(I) \rangle$ ¹	1.92 (at 2.69Å)	Xtriage
Refinement program	REFMAC 5.7.0029	Depositor
R, R_{free}	0.202 , 0.250 0.204 , 0.254	Depositor DCC
R_{free} test set	2744 reflections (5.36%)	DCC
Wilson B-factor (Å ²)	63.7	Xtriage
Anisotropy	0.291	Xtriage
Bulk solvent k_{sol} (e/Å ³), B_{sol} (Å ²)	0.29 , 48.9	EDS
Estimated twinning fraction	No twinning to report.	Xtriage
L-test for twinning ²	$\langle L \rangle = 0.49$, $\langle L^2 \rangle = 0.33$	Xtriage
Outliers	0 of 53947 reflections	Xtriage
F_o, F_c correlation	0.94	EDS
Total number of atoms	8326	wwPDB-VP
Average B, all atoms (Å ²)	80.0	wwPDB-VP

Xtriage's analysis on translational NCS is as follows: *The largest off-origin peak in the Patterson function is 3.58% of the height of the origin peak. No significant pseudotranslation is detected.*

¹Intensities estimated from amplitudes.

²Theoretical values of $\langle |L| \rangle$, $\langle L^2 \rangle$ for acentric reflections are 0.5, 0.375 respectively for untwinned datasets, and 0.333, 0.2 for perfectly twinned datasets.

5 Model quality

5.1 Standard geometry

Bond lengths and bond angles in the following residue types are not validated in this section: HEM, CA, HEC, FE, CL

The Z score for a bond length (or angle) is the number of standard deviations the observed value is removed from the expected value. A bond length (or angle) with $|Z| > 5$ is considered an outlier worth inspection. RMSZ is the root-mean-square of all Z scores of the bond lengths (or angles).

Mol	Chain	Bond lengths		Bond angles	
		RMSZ	# $ Z > 5$	RMSZ	# $ Z > 5$
1	L	0.87	0/1709	0.95	2/2317 (0.1%)
2	H	0.83	0/1735	0.90	0/2367
3	B	0.72	0/3693	0.78	1/5039 (0.0%)
4	C	0.66	0/1153	0.78	0/1559
All	All	0.77	0/8290	0.84	3/11282 (0.0%)

There are no bond length outliers.

All (3) bond angle outliers are listed below:

Mol	Chain	Res	Type	Atoms	Z	Observed(°)	Ideal(°)
1	L	4	MET	CB-CG-SD	-5.55	95.74	112.40
3	B	45	ASP	CB-CG-OD1	5.38	123.14	118.30
1	L	48	ILE	CB-CA-C	-5.11	101.38	111.60

There are no chirality outliers.

There are no planarity outliers.

5.2 Too-close contacts

In the following table, the Non-H and H(model) columns list the number of non-hydrogen atoms and hydrogen atoms in the chain respectively. The H(added) column lists the number of hydrogen atoms added and optimized by MolProbity. The Clashes column lists the number of clashes within the asymmetric unit, whereas Symm-Clashes lists symmetry related clashes.

Mol	Chain	Non-H	H(model)	H(added)	Clashes	Symm-Clashes
1	L	1669	0	1606	35	1
2	H	1692	0	1647	39	0
3	B	3576	0	3619	91	1
4	C	1123	0	1091	26	0

Continued on next page...

Continued from previous page...

Mol	Chain	Non-H	H(model)	H(added)	Clashes	Symm-Clashes
5	B	86	0	60	21	0
6	B	1	0	0	0	0
7	B	1	0	0	1	0
8	B	1	0	0	0	0
9	C	43	0	30	3	0
10	B	24	0	0	1	0
10	C	29	0	0	0	0
10	H	42	0	0	1	0
10	L	39	0	0	1	0
All	All	8326	0	8053	186	1

The all-atom clashscore is defined as the number of clashes found per 1000 atoms (including hydrogen atoms). The all-atom clashscore for this structure is 11.

All (186) close contacts within the same asymmetric unit are listed below, sorted by their clash magnitude.

Atom-1	Atom-2	Interatomic distance (Å)	Clash overlap (Å)
2:H:199:ARG:HH11	2:H:199:ARG:HG3	1.13	1.11
2:H:199:ARG:CG	2:H:199:ARG:HH11	1.84	0.90
4:C:25:PHE:O	4:C:29:THR:HG23	1.78	0.84
4:C:32:THR:O	4:C:35:THR:HG22	1.79	0.83
2:H:199:ARG:NH1	2:H:199:ARG:HG3	1.81	0.83
5:B:801:HEM:HBB2	5:B:801:HEM:HHC	1.61	0.82
1:L:213:GLU:OE2	2:H:139:CYS:SG	2.42	0.77
2:H:48:ILE:HG21	2:H:81:MET:CE	2.14	0.77
5:B:802:HEM:HHC	5:B:802:HEM:HBB2	1.69	0.75
3:B:266:PRO:HD3	4:C:35:THR:HG21	1.69	0.74
1:L:70:GLU:HG3	10:L:324:HOH:O	1.86	0.73
3:B:321:GLY:CA	3:B:350:MET:HG2	2.19	0.73
1:L:157:ASN:N	1:L:157:ASN:OD1	2.22	0.72
3:B:350:MET:HB2	3:B:401:THR:HG21	1.69	0.72
3:B:104:ALA:O	3:B:108:THR:CG2	2.38	0.71
2:H:48:ILE:HG21	2:H:81:MET:HE3	1.72	0.70
1:L:160:LEU:HD21	2:H:180:VAL:HG22	1.74	0.70
2:H:68:ALA:HB1	2:H:81:MET:HE2	1.74	0.70
3:B:97:LEU:HD11	3:B:153:GLY:HA3	1.72	0.70
3:B:31:ILE:HD11	5:B:801:HEM:HMC3	1.73	0.70
2:H:183:SER:OG	2:H:184:ASP:N	2.23	0.69
3:B:284:PHE:HZ	5:B:802:HEM:HBB1	1.58	0.69
3:B:137:LEU:HA	3:B:139:GLN:NE2	2.08	0.67
1:L:124:GLN:HG3	2:H:133:TYR:CE2	2.29	0.67

Continued on next page...

Continued from previous page...

Atom-1	Atom-2	Interatomic distance (Å)	Clash overlap (Å)
3:B:424:MET:HB3	3:B:429:THR:HG22	1.75	0.67
3:B:79:LEU:HD11	3:B:174:LEU:HD12	1.77	0.66
3:B:321:GLY:HA3	3:B:350:MET:HG2	1.77	0.65
3:B:203:TRP:CE2	3:B:259:HIS:HB3	2.31	0.65
3:B:352:PHE:HB3	5:B:801:HEM:CBC	2.27	0.64
1:L:195:GLU:HG2	1:L:206:VAL:HG22	1.79	0.64
3:B:211:GLU:OE2	7:B:804:CL:CL	2.53	0.63
3:B:57:ARG:NH2	5:B:801:HEM:HBD1	2.14	0.63
1:L:79:GLU:HG3	1:L:80:PRO:HD2	1.79	0.62
3:B:137:LEU:HA	3:B:139:GLN:HE22	1.63	0.62
3:B:59:VAL:O	3:B:63:LEU:HG	1.99	0.62
3:B:367:ALA:O	3:B:371:LEU:HB2	1.99	0.61
1:L:119:PRO:HD2	2:H:224:ARG:NH1	2.14	0.61
3:B:284:PHE:CZ	5:B:802:HEM:HBB1	2.35	0.61
3:B:104:ALA:O	3:B:108:THR:HG22	2.01	0.61
3:B:290:PHE:O	3:B:294:THR:HG23	2.01	0.60
2:H:174:VAL:HG22	2:H:192:VAL:CG1	2.30	0.60
3:B:63:LEU:HD21	3:B:109:ILE:HG13	1.84	0.60
1:L:212:ASN:O	1:L:213:GLU:HB2	2.03	0.59
3:B:31:ILE:HD12	5:B:801:HEM:HBB2	1.85	0.58
3:B:62:ASN:ND2	3:B:112:TYR:OH	2.36	0.58
1:L:136:LEU:CD1	1:L:196:ALA:HB2	2.34	0.57
2:H:116:GLN:O	2:H:116:GLN:HG2	2.04	0.57
2:H:76:ALA:O	2:H:78:THR:HG22	2.05	0.57
1:L:156:GLN:HA	1:L:156:GLN:OE1	2.04	0.57
2:H:48:ILE:HG21	2:H:81:MET:HE1	1.86	0.56
3:B:169:ALA:O	3:B:173:VAL:HG23	2.04	0.56
3:B:31:ILE:HD11	5:B:801:HEM:CMC	2.36	0.55
3:B:265:VAL:HB	3:B:266:PRO:HD2	1.87	0.55
3:B:63:LEU:CD2	3:B:109:ILE:HG13	2.36	0.55
4:C:95:LEU:HD13	4:C:122:VAL:HG13	1.87	0.55
3:B:127:GLU:OE2	3:B:127:GLU:HA	2.05	0.55
4:C:92:ASN:OD1	4:C:130:LYS:HE2	2.07	0.55
3:B:104:ALA:O	3:B:108:THR:HG23	2.06	0.54
1:L:213:GLU:OE1	1:L:213:GLU:HA	2.08	0.54
3:B:120:LEU:HG	3:B:132:MET:HE1	1.89	0.54
2:H:55:ASN:O	2:H:56:SER:HB2	2.06	0.54
3:B:209:TRP:O	3:B:214:TRP:HB2	2.09	0.53
3:B:92:LYS:O	3:B:96:ILE:HG22	2.09	0.53
4:C:106:VAL:HG22	4:C:109:ARG:HB2	1.89	0.53
3:B:397:MET:O	3:B:401:THR:HG23	2.09	0.53

Continued on next page...

Continued from previous page...

Atom-1	Atom-2	Interatomic distance (Å)	Clash overlap (Å)
3:B:21:VAL:O	3:B:25:ILE:HG12	2.09	0.52
3:B:158:VAL:HG13	3:B:175:MET:SD	2.50	0.52
3:B:349:HIS:HD2	5:B:801:HEM:C4C	2.27	0.51
3:B:395:VAL:HA	3:B:398:VAL:HG13	1.90	0.51
5:B:801:HEM:HBC2	5:B:801:HEM:HHD	1.91	0.51
4:C:95:LEU:HD13	4:C:122:VAL:CG1	2.40	0.51
2:H:38:LYS:HE2	2:H:40:ARG:CD	2.41	0.51
3:B:218:MET:HG2	3:B:287:MET:HE1	1.93	0.51
2:H:199:ARG:CG	2:H:199:ARG:NH1	2.52	0.51
4:C:75:ALA:HB1	4:C:76:PRO:CD	2.41	0.51
3:B:349:HIS:CD2	5:B:801:HEM:C4C	2.98	0.51
3:B:317:MET:HB3	3:B:354:GLY:HA2	1.93	0.51
1:L:160:LEU:HD21	2:H:180:VAL:CG2	2.38	0.51
4:C:18:SER:O	4:C:22:ILE:HG12	2.10	0.51
9:C:201:HEC:HBC3	9:C:201:HEC:HMC1	1.91	0.50
2:H:38:LYS:HB2	2:H:48:ILE:HD11	1.93	0.50
3:B:202:TRP:CZ2	3:B:206:VAL:HG21	2.46	0.50
3:B:200:PHE:HD2	3:B:265:VAL:HG11	1.77	0.50
3:B:326:GLY:O	3:B:330:THR:HB	2.11	0.50
3:B:13:GLN:HE22	3:B:82:GLU:HG3	1.77	0.49
1:L:209:PHE:HB3	2:H:138:VAL:HG11	1.94	0.49
2:H:38:LYS:HE2	2:H:40:ARG:HD3	1.93	0.49
3:B:425:THR:O	3:B:429:THR:CG2	2.61	0.49
3:B:291:ALA:O	3:B:295:ILE:HD12	2.12	0.49
5:B:801:HEM:CBB	5:B:801:HEM:HHC	2.37	0.49
1:L:190:ASN:HD21	1:L:212:ASN:HD22	1.59	0.49
5:B:802:HEM:HHC	5:B:802:HEM:CBB	2.41	0.49
3:B:79:LEU:HD11	3:B:174:LEU:CD1	2.41	0.49
2:H:154:LYS:HA	2:H:187:THR:HB	1.94	0.49
3:B:206:VAL:O	3:B:210:VAL:HB	2.12	0.49
3:B:292:PHE:O	3:B:296:ASN:HB2	2.13	0.49
1:L:124:GLN:HG3	2:H:133:TYR:CZ	2.47	0.48
3:B:352:PHE:HB3	5:B:801:HEM:HBC2	1.95	0.48
3:B:310:TRP:HB3	3:B:362:THR:OG1	2.14	0.48
1:L:29:ILE:HG21	1:L:90:GLN:CG	2.43	0.48
3:B:37:MET:SD	3:B:57:ARG:HA	2.53	0.48
2:H:174:VAL:HG22	2:H:192:VAL:HG13	1.95	0.48
2:H:76:ALA:O	2:H:78:THR:CG2	2.61	0.48
3:B:174:LEU:CD2	3:B:178:LEU:HD11	2.44	0.48
3:B:10:PHE:HB3	3:B:87:GLU:OE1	2.14	0.48
3:B:394:THR:O	3:B:398:VAL:HG12	2.13	0.48

Continued on next page...

Continued from previous page...

Atom-1	Atom-2	Interatomic distance (Å)	Clash overlap (Å)
1:L:125:LEU:HD22	1:L:183:LYS:HG3	1.95	0.48
3:B:92:LYS:HG3	3:B:93:LEU:N	2.28	0.47
3:B:341:THR:HG23	3:B:416:ARG:NH1	2.29	0.47
1:L:2:ILE:CD1	1:L:25:ALA:HB1	2.45	0.47
5:B:801:HEM:CHC	5:B:801:HEM:HBB2	2.34	0.47
3:B:415:GLN:HB2	3:B:429:THR:HG21	1.97	0.47
3:B:93:LEU:HA	3:B:96:ILE:CG2	2.45	0.47
3:B:202:TRP:CH2	3:B:206:VAL:HG21	2.50	0.47
2:H:47:TRP:CZ2	2:H:49:GLY:HA2	2.50	0.47
3:B:425:THR:O	3:B:429:THR:HG22	2.14	0.47
3:B:154:PHE:CZ	3:B:178:LEU:HD13	2.49	0.46
3:B:338:THR:HG22	3:B:412:VAL:HG21	1.97	0.46
4:C:113:PRO:HD3	9:C:201:HEC:HBC2	1.97	0.46
3:B:339:HIS:CD2	4:C:69:GLY:HA3	2.50	0.46
2:H:147:VAL:HG12	2:H:194:VAL:HG12	1.98	0.46
3:B:13:GLN:NE2	3:B:82:GLU:HG3	2.30	0.46
3:B:61:THR:HG23	3:B:136:PHE:HD1	1.80	0.46
3:B:350:MET:HE3	3:B:398:VAL:HA	1.96	0.46
1:L:94:TYR:CD1	1:L:94:TYR:C	2.89	0.46
2:H:147:VAL:CG1	2:H:194:VAL:HG12	2.46	0.46
2:H:194:VAL:HG13	2:H:198:THR:HB	1.97	0.46
1:L:29:ILE:HD11	1:L:71:PHE:CE1	2.51	0.46
1:L:212:ASN:OD1	1:L:213:GLU:N	2.49	0.45
3:B:336:TYR:CE1	4:C:142:PRO:HG3	2.52	0.45
1:L:54:LEU:HD11	1:L:60:SER:HA	1.99	0.45
4:C:51:ARG:NH1	4:C:124:ASP:OD1	2.50	0.45
3:B:280:GLU:N	3:B:281:PRO:CD	2.79	0.45
1:L:27:LYS:HE2	1:L:93:GLU:OE2	2.17	0.45
4:C:140:TRP:CG	4:C:141:PRO:HA	2.52	0.45
3:B:245:ILE:HD12	4:C:14:TYR:CE1	2.52	0.44
4:C:134:LYS:HB2	4:C:134:LYS:HE2	1.71	0.44
4:C:74:PHE:CE1	4:C:110:ARG:HD3	2.53	0.44
5:B:802:HEM:CHC	5:B:802:HEM:HBB2	2.38	0.44
3:B:349:HIS:HD2	5:B:801:HEM:NC	2.11	0.44
4:C:85:ARG:HG3	4:C:94:PHE:CE2	2.52	0.44
2:H:23:LYS:HG2	2:H:78:THR:HG22	2.00	0.44
3:B:258:HIS:ND1	3:B:277:SER:OG	2.50	0.44
1:L:29:ILE:HG21	1:L:90:GLN:HG3	2.00	0.44
3:B:31:ILE:HD12	5:B:801:HEM:CBB	2.48	0.44
1:L:90:GLN:OE1	1:L:92:ASN:N	2.48	0.43
3:B:264:GLY:HA2	4:C:136:ASP:O	2.18	0.43

Continued on next page...

Continued from previous page...

Atom-1	Atom-2	Interatomic distance (Å)	Clash overlap (Å)
1:L:15:PRO:HD3	1:L:106:LEU:HD11	2.00	0.43
3:B:289:LEU:O	3:B:293:ASN:HB2	2.17	0.43
2:H:98:ARG:HD3	2:H:99:SER:O	2.18	0.43
3:B:385:LEU:HB3	3:B:457:SER:HB3	2.01	0.43
3:B:98:PHE:C	3:B:98:PHE:CD1	2.92	0.43
3:B:163:LEU:HD23	3:B:163:LEU:HA	1.74	0.43
3:B:108:THR:HB	3:B:143:SER:OG	2.18	0.43
2:H:35:HIS:O	2:H:96:CYS:HA	2.18	0.43
3:B:131:THR:HG21	3:B:189:PHE:HA	2.01	0.43
3:B:57:ARG:NH1	10:B:907:HOH:O	2.51	0.42
1:L:79:GLU:HG3	1:L:80:PRO:CD	2.49	0.42
2:H:182:GLN:HG3	2:H:187:THR:CG2	2.49	0.42
3:B:305:ARG:HE	3:B:305:ARG:HB3	1.58	0.42
1:L:150:ILE:HD11	1:L:179:LEU:HD11	2.02	0.42
2:H:2:VAL:HG12	2:H:113:VAL:HG21	2.01	0.42
2:H:36:TRP:HA	2:H:95:TYR:O	2.20	0.42
3:B:352:PHE:HB3	5:B:801:HEM:HBC1	1.99	0.42
1:L:15:PRO:HD3	1:L:106:LEU:CD1	2.49	0.42
3:B:343:LEU:HD22	3:B:408:GLY:HA3	2.01	0.42
3:B:266:PRO:HG2	3:B:268:TYR:CZ	2.55	0.41
3:B:154:PHE:CE2	3:B:178:LEU:HD13	2.55	0.41
2:H:32:TYR:CZ	2:H:102:ASP:HB3	2.55	0.41
1:L:2:ILE:O	1:L:2:ILE:HG13	2.20	0.41
3:B:31:ILE:CD1	5:B:801:HEM:HBB2	2.49	0.41
3:B:195:LEU:HD11	4:C:67:LEU:HD13	2.02	0.41
1:L:35:TRP:HA	1:L:87:TYR:O	2.19	0.41
1:L:193:THR:HG22	1:L:194:CYS:N	2.35	0.41
1:L:136:LEU:HD11	1:L:196:ALA:HB2	2.03	0.41
2:H:160:PRO:HA	10:H:317:HOH:O	2.21	0.41
4:C:64:CYS:C	4:C:72:ALA:HB3	2.42	0.41
4:C:46:SER:O	4:C:50:VAL:HG23	2.21	0.41
1:L:205:ILE:HG21	1:L:205:ILE:HD13	1.86	0.41
3:B:262:TRP:CZ2	3:B:336:TYR:HB2	2.56	0.41
4:C:115:PHE:CD2	9:C:201:HEC:HBB2	2.55	0.40
2:H:2:VAL:CG1	2:H:113:VAL:HG21	2.51	0.40
4:C:82:VAL:HG21	4:C:130:LYS:HG2	2.04	0.40
4:C:75:ALA:HB1	4:C:76:PRO:HD2	2.03	0.40
4:C:47:ALA:O	4:C:51:ARG:HB2	2.21	0.40
3:B:314:THR:OG1	3:B:358:MET:HB3	2.21	0.40

All (1) symmetry-related close contacts are listed below. The label for Atom-2 includes the symmetry operator and encoded unit-cell translations to be applied.

Atom-1	Atom-2	Interatomic distance (Å)	Clash overlap (Å)
1:L:157:ASN:ND2	3:B:165:GLY:O[2_554]	2.08	0.12

5.3 Torsion angles [i](#)

5.3.1 Protein backbone [i](#)

In the following table, the Percentiles column shows the percent Ramachandran outliers of the chain as a percentile score with respect to all X-ray entries followed by that with respect to entries of similar resolution.

The Analysed column shows the number of residues for which the backbone conformation was analysed, and the total number of residues.

Mol	Chain	Analysed	Favoured	Allowed	Outliers	Percentiles	
1	L	211/213 (99%)	202 (96%)	9 (4%)	0	100	100
2	H	223/225 (99%)	208 (93%)	12 (5%)	3 (1%)	15	37
3	B	447/465 (96%)	427 (96%)	19 (4%)	1 (0%)	52	80
4	C	140/146 (96%)	135 (96%)	5 (4%)	0	100	100
All	All	1021/1049 (97%)	972 (95%)	45 (4%)	4 (0%)	39	69

All (4) Ramachandran outliers are listed below:

Mol	Chain	Res	Type
3	B	457	SER
2	H	140	GLY
2	H	144	GLY
2	H	139	CYS

5.3.2 Protein sidechains [i](#)

In the following table, the Percentiles column shows the percent sidechain outliers of the chain as a percentile score with respect to all X-ray entries followed by that with respect to entries of similar resolution.

The Analysed column shows the number of residues for which the sidechain conformation was analysed, and the total number of residues.

Mol	Chain	Analysed	Rotameric	Outliers	Percentiles	
1	L	189/189 (100%)	172 (91%)	17 (9%)	12	27
2	H	192/192 (100%)	176 (92%)	16 (8%)	14	31

Continued on next page...

Continued from previous page...

Mol	Chain	Analysed	Rotameric	Outliers	Percentiles	
3	B	360/371 (97%)	324 (90%)	36 (10%)	9	22
4	C	116/120 (97%)	103 (89%)	13 (11%)	7	17
All	All	857/872 (98%)	775 (90%)	82 (10%)	10	24

All (82) residues with a non-rotameric sidechain are listed below:

Mol	Chain	Res	Type
1	L	2	ILE
1	L	3	GLN
1	L	7	SER
1	L	27	LYS
1	L	46	LEU
1	L	48	ILE
1	L	54	LEU
1	L	90	GLN
1	L	94	TYR
1	L	116	SER
1	L	136	LEU
1	L	157	ASN
1	L	160	LEU
1	L	169	LYS
1	L	179	LEU
1	L	199	LYS
1	L	207	LYS
2	H	40	ARG
2	H	78	THR
2	H	98	ARG
2	H	116	GLN
2	H	143	THR
2	H	146	SER
2	H	152	LEU
2	H	158	PRO
2	H	180	VAL
2	H	187	THR
2	H	188	LEU
2	H	189	SER
2	H	192	VAL
2	H	194	VAL
2	H	199	ARG
2	H	219	LYS
3	B	39	LEU

Continued on next page...

Continued from previous page...

Mol	Chain	Res	Type
3	B	41	TYR
3	B	61	THR
3	B	86	CYS
3	B	96	ILE
3	B	101	PHE
3	B	108	THR
3	B	115	VAL
3	B	158	VAL
3	B	195	LEU
3	B	210	VAL
3	B	216	LEU
3	B	240	TRP
3	B	258	HIS
3	B	293	ASN
3	B	294	THR
3	B	298	ARG
3	B	305	ARG
3	B	307	VAL
3	B	309	LEU
3	B	325	TRP
3	B	329	HIS
3	B	330	THR
3	B	343	LEU
3	B	363	ILE
3	B	370	ARG
3	B	392	LEU
3	B	398	VAL
3	B	401	THR
3	B	404	LEU
3	B	416	ARG
3	B	429	THR
3	B	433	LEU
3	B	435	ILE
3	B	440	ARG
3	B	451	LEU
4	C	9	MET
4	C	15	PHE
4	C	19	VAL
4	C	22	ILE
4	C	49	VAL
4	C	62	VAL
4	C	67	LEU

Continued on next page...

Continued from previous page...

Mol	Chain	Res	Type
4	C	82	VAL
4	C	95	LEU
4	C	106	VAL
4	C	123	ASP
4	C	125	LEU
4	C	144	LYS

Some sidechains can be flipped to improve hydrogen bonding and reduce clashes. All (3) such sidechains are listed below:

Mol	Chain	Res	Type
1	L	212	ASN
3	B	62	ASN
3	B	139	GLN

5.3.3 RNA [i](#)

There are no RNA molecules in this entry.

5.4 Non-standard residues in protein, DNA, RNA chains [i](#)

There are no non-standard protein/DNA/RNA residues in this entry.

5.5 Carbohydrates [i](#)

There are no carbohydrates in this entry.

5.6 Ligand geometry [i](#)

Of 6 ligands modelled in this entry, 3 are monoatomic - leaving 3 for Mogul analysis.

In the following table, the Counts columns list the number of bonds (or angles) for which Mogul statistics could be retrieved, the number of bonds (or angles) that are observed in the model and the number of bonds (or angles) that are defined in the chemical component dictionary. The Link column lists molecule types, if any, to which the group is linked. The Z score for a bond length (or angle) is the number of standard deviations the observed value is removed from the expected value. A bond length (or angle) with $|Z| > 2$ is considered an outlier worth inspection. RMSZ is the root-mean-square of all Z scores of the bond lengths (or angles).

Mol	Type	Chain	Res	Link	Bond lengths			Bond angles		
					Counts	RMSZ	# Z > 2	Counts	RMSZ	# Z > 2
5	HEM	B	801	8,3	30,50,50	2.26	8 (26%)	24,82,82	2.29	8 (33%)
5	HEM	B	802	8,3	30,50,50	2.10	9 (30%)	24,82,82	3.07	10 (41%)
9	HEC	C	201	4	24,50,50	2.34	5 (20%)	19,82,82	2.93	7 (36%)

In the following table, the Chirals column lists the number of chiral outliers, the number of chiral centers analysed, the number of these observed in the model and the number defined in the chemical component dictionary. Similar counts are reported in the Torsion and Rings columns. '-' means no outliers of that kind were identified.

Mol	Type	Chain	Res	Link	Chirals	Torsions	Rings
5	HEM	B	801	8,3	-	0/10/54/54	0/0/8/8
5	HEM	B	802	8,3	-	0/10/54/54	0/0/8/8
9	HEC	C	201	4	-	0/6/54/54	0/0/8/8

All (22) bond length outliers are listed below:

Mol	Chain	Res	Type	Atoms	Z	Observed(Å)	Ideal(Å)
5	B	802	HEM	C3B-C4B	-6.77	1.45	1.51
5	B	801	HEM	C3B-C4B	-6.53	1.46	1.51
5	B	801	HEM	C3D-C4D	-6.51	1.43	1.51
9	C	201	HEC	C3C-C2C	-6.05	1.34	1.40
9	C	201	HEC	C3B-C2B	-5.75	1.34	1.40
5	B	802	HEM	C3D-C4D	-4.77	1.45	1.51
5	B	801	HEM	C2C-C1C	-3.38	1.46	1.52
5	B	802	HEM	C2C-C1C	-3.31	1.46	1.52
5	B	802	HEM	C2D-C1D	-2.34	1.44	1.51
5	B	801	HEM	C2B-C1B	-2.12	1.44	1.51
5	B	802	HEM	C4A-CHB	-2.10	1.34	1.39
5	B	802	HEM	C3C-CAC	2.02	1.55	1.51
5	B	802	HEM	CMA-C3A	2.04	1.55	1.51
9	C	201	HEC	CMA-C3A	2.16	1.56	1.51
5	B	801	HEM	FE-NB	2.33	2.09	1.97
5	B	802	HEM	FE-NB	2.34	2.09	1.97
9	C	201	HEC	C3C-C4C	2.40	1.48	1.42
5	B	801	HEM	FE-NC	2.43	2.05	1.95
5	B	802	HEM	C1C-NC	2.73	1.39	1.36
5	B	801	HEM	C1C-NC	2.85	1.39	1.36
5	B	801	HEM	C3C-CAC	3.00	1.56	1.51
9	C	201	HEC	C3D-C2D	5.56	1.54	1.37

All (25) bond angle outliers are listed below:

Mol	Chain	Res	Type	Atoms	Z	Observed(°)	Ideal(°)
9	C	201	HEC	CBB-CAB-C3B	-7.83	109.95	127.35
5	B	802	HEM	CBA-CAA-C2A	-7.41	99.24	112.53
5	B	802	HEM	C3B-CAB-CBB	-5.06	116.69	124.46
9	C	201	HEC	CAA-C2A-C1A	-4.54	122.08	127.01
5	B	802	HEM	C3C-CAC-CBC	-4.37	117.75	124.46
9	C	201	HEC	CBD-CAD-C3D	-4.32	104.78	112.53
5	B	801	HEM	C3B-CAB-CBB	-4.12	118.13	124.46
5	B	802	HEM	CAA-CBA-CGA	-4.11	105.22	112.75
5	B	801	HEM	CAA-CBA-CGA	-3.87	105.65	112.75
9	C	201	HEC	CMB-C2B-C1B	-3.76	122.14	128.36
9	C	201	HEC	CMC-C2C-C1C	-3.64	122.34	128.36
9	C	201	HEC	CBC-CAC-C3C	-3.50	119.58	127.35
9	C	201	HEC	CBA-CAA-C2A	-3.27	106.67	112.53
5	B	801	HEM	C3B-C4B-CHC	2.04	126.04	123.16
5	B	801	HEM	C2D-C3D-C4D	2.18	105.20	101.50
5	B	802	HEM	CMD-C2D-C3D	2.73	126.41	114.35
5	B	801	HEM	CMB-C2B-C3B	3.06	124.18	116.53
5	B	802	HEM	C3B-C4B-CHC	3.08	127.50	123.16
5	B	801	HEM	CMC-C2C-C3C	3.19	124.49	116.53
5	B	802	HEM	CMB-C2B-C3B	3.35	124.91	116.53
5	B	801	HEM	CAD-C3D-C2D	4.25	125.45	113.22
5	B	802	HEM	CAD-C3D-C2D	4.44	125.98	113.22
5	B	802	HEM	CMC-C2C-C3C	4.60	128.02	116.53
5	B	801	HEM	CAD-C3D-C4D	4.79	129.35	112.47
5	B	802	HEM	CAD-C3D-C4D	4.95	129.94	112.47

There are no chirality outliers.

There are no torsion outliers.

There are no ring outliers.

3 monomers are involved in 24 short contacts:

Mol	Chain	Res	Type	Clashes	Symm-Clashes
5	B	801	HEM	16	0
5	B	802	HEM	5	0
9	C	201	HEC	3	0

5.7 Other polymers

There are no such residues in this entry.

5.8 Polymer linkage issues

There are no chain breaks in this entry.

6 Fit of model and data ⓘ

6.1 Protein, DNA and RNA chains ⓘ

In the following table, the column labelled ‘#RSRZ> 2’ contains the number (and percentage) of RSRZ outliers, followed by percent RSRZ outliers for the chain as percentile scores relative to all X-ray entries and entries of similar resolution. The OWAB column contains the minimum, median, 95th percentile and maximum values of the occupancy-weighted average B-factor per residue. The column labelled ‘Q< 0.9’ lists the number of (and percentage) of residues with an average occupancy less than 0.9.

Mol	Chain	Analysed	<RSRZ>	#RSRZ>2	OWAB(Å ²)	Q<0.9
1	L	213/213 (100%)	-0.29	1 (0%) 91 93	47, 62, 94, 150	0
2	H	225/225 (100%)	-0.19	7 (3%) 52 52	46, 62, 102, 201	0
3	B	449/465 (96%)	0.51	59 (13%) 5 4	54, 86, 127, 165	0
4	C	142/146 (97%)	0.28	12 (8%) 13 10	51, 85, 133, 156	0
All	All	1029/1049 (98%)	0.16	79 (7%) 16 14	46, 76, 126, 201	0

All (79) RSRZ outliers are listed below:

Mol	Chain	Res	Type	RSRZ
3	B	129	TRP	7.8
3	B	381	ARG	6.8
2	H	142	THR	6.8
4	C	9	MET	5.8
4	C	5	PHE	5.5
3	B	128	LEU	5.5
3	B	214	TRP	5.1
3	B	357	ALA	5.1
4	C	30	TYR	4.9
3	B	356	TYR	4.7
3	B	191	ASN	4.6
3	B	96	ILE	4.4
4	C	34	LYS	4.1
3	B	210	VAL	3.9
3	B	130	PRO	3.8
3	B	384	VAL	3.8
3	B	361	MET	3.6
3	B	190	TYR	3.6
3	B	89	TYR	3.5
3	B	131	THR	3.5
4	C	10	ALA	3.5

Continued on next page...

Continued from previous page...

Mol	Chain	Res	Type	RSRZ
3	B	68	LEU	3.4
1	L	212	ASN	3.4
3	B	359	ILE	3.3
3	B	358	MET	3.3
2	H	141	ASP	3.3
4	C	35	THR	3.2
3	B	363	ILE	3.2
3	B	65	ILE	3.2
3	B	355	ALA	3.1
3	B	299	ARG	3.0
4	C	6	THR	3.0
3	B	254	ILE	3.0
3	B	95	TRP	2.9
3	B	209	TRP	2.9
3	B	236	VAL	2.9
3	B	251	SER	2.9
3	B	360	VAL	2.8
3	B	197	ARG	2.8
3	B	92	LYS	2.7
3	B	235	GLU	2.7
3	B	136	PHE	2.7
4	C	39	ARG	2.6
3	B	206	VAL	2.6
3	B	221	ILE	2.6
3	B	181	LEU	2.6
3	B	203	TRP	2.6
3	B	72	PHE	2.6
3	B	88	LEU	2.6
3	B	218	MET	2.6
3	B	261	PHE	2.6
3	B	85	ASP	2.5
3	B	362	THR	2.5
3	B	205	VAL	2.5
3	B	364	ILE	2.5
4	C	13	ILE	2.5
3	B	270	LEU	2.4
4	C	43	ALA	2.4
3	B	114	LEU	2.4
3	B	301	ASP	2.4
3	B	266	PRO	2.4
2	H	138	VAL	2.4
2	H	13	ARG	2.4

Continued on next page...

Continued from previous page...

Mol	Chain	Res	Type	RSRZ
3	B	435	ILE	2.4
3	B	240	TRP	2.3
2	H	221	ILE	2.3
2	H	140	GLY	2.2
3	B	160	MET	2.2
4	C	12	ASN	2.2
4	C	66	THR	2.1
3	B	67	TRP	2.1
3	B	276	PHE	2.1
3	B	352	PHE	2.1
2	H	89	GLU	2.1
3	B	213	VAL	2.1
3	B	271	TRP	2.1
3	B	143	SER	2.1
3	B	388	TRP	2.0
3	B	64	LEU	2.0

6.2 Non-standard residues in protein, DNA, RNA chains [i](#)

There are no non-standard protein/DNA/RNA residues in this entry.

6.3 Carbohydrates [i](#)

There are no carbohydrates in this entry.

6.4 Ligands [i](#)

In the following table, the Atoms column lists the number of modelled atoms in the group and the number defined in the chemical component dictionary. LLDF column lists the quality of electron density of the group with respect to its neighbouring residues in protein, DNA or RNA chains. The B-factors column lists the minimum, median, 95th percentile and maximum values of B factors of atoms in the group. The column labelled 'Q< 0.9' lists the number of atoms with occupancy less than 0.9.

Mol	Type	Chain	Res	Atoms	RSCC	RSR	LLDF	B-factors(Å ²)	Q<0.9
9	HEC	C	201	43/43	0.98	0.21	1.17	54,61,66,68	0
5	HEM	B	801	43/43	0.97	0.25	0.50	58,67,80,84	0
7	CL	B	804	1/1	0.96	0.29	0.40	68,68,68,68	0
5	HEM	B	802	43/43	0.96	0.24	0.15	70,77,86,90	0
8	CA	B	805	1/1	0.98	0.22	-0.48	73,73,73,73	0
6	FE	B	803	1/1	0.99	0.16	-	74,74,74,74	0

6.5 Other polymers [i](#)

There are no such residues in this entry.