



Full wwPDB X-ray Structure Validation Report ⓘ

Apr 25, 2016 – 10:25 PM EDT

PDB ID : 3WH6
Title : Crystal structure of GH1 beta-glucosidase Td2F2 glucose complex
Authors : Jo, T.; Fushinobu, S.; Uchiyama, T.; Yaoi, K.
Deposited on : 2013-08-21
Resolution : 1.60 Å(reported)

This is a Full wwPDB X-ray Structure Validation Report for a publicly released PDB entry.
We welcome your comments at validation@mail.wwpdb.org
A user guide is available at
<http://wwpdb.org/validation/2016/XrayValidationReportHelp>
with specific help available everywhere you see the ⓘ symbol.

The following versions of software and data (see [references ⓘ](#)) were used in the production of this report:

MolProbity : 4.02b-467
Mogul : 1.7.1 (RC1), CSD as537be (2016)
Xtriage (Phenix) : 1.9-1692
EDS : rb-20027257
Percentile statistics : 20151230.v01 (using entries in the PDB archive December 30th 2015)
Refmac : 5.8.0135
CCP4 : 6.5.0
Ideal geometry (proteins) : Engh & Huber (2001)
Ideal geometry (DNA, RNA) : Parkinson et al. (1996)
Validation Pipeline (wwPDB-VP) : rb-20027257

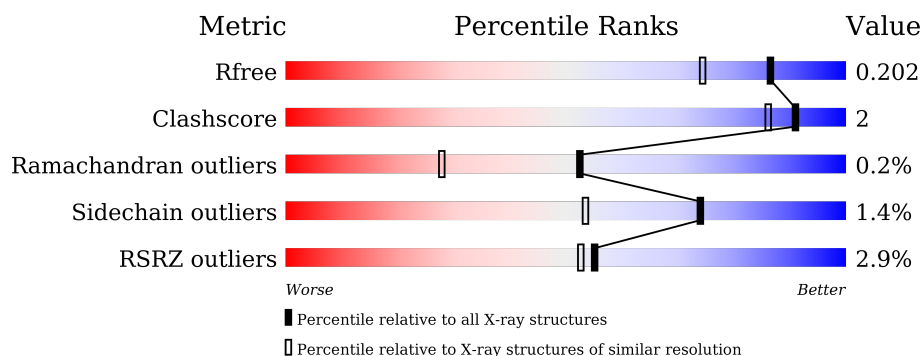
1 Overall quality at a glance

The following experimental techniques were used to determine the structure:

X-RAY DIFFRACTION

The reported resolution of this entry is 1.60 Å.

Percentile scores (ranging between 0-100) for global validation metrics of the entry are shown in the following graphic. The table shows the number of entries on which the scores are based.



Metric	Whole archive (#Entries)	Similar resolution (#Entries, resolution range(Å))
R_{free}	91344	2475 (1.60-1.60)
Clashscore	102246	2732 (1.60-1.60)
Ramachandran outliers	100387	2654 (1.60-1.60)
Sidechain outliers	100360	2653 (1.60-1.60)
RSRZ outliers	91569	2479 (1.60-1.60)

The table below summarises the geometric issues observed across the polymeric chains and their fit to the electron density. The red, orange, yellow and green segments on the lower bar indicate the fraction of residues that contain outliers for ≥ 3 , 2, 1 and 0 types of geometric quality criteria. A grey segment represents the fraction of residues that are not modelled. The numeric value for each fraction is indicated below the corresponding segment, with a dot representing fractions $\leq 5\%$. The upper red bar (where present) indicates the fraction of residues that have poor fit to the electron density. The numeric value is given above the bar.

Mol	Chain	Length	Quality of chain
1	A	457	<div> <div>3%</div> <div>88%</div> <div>8% ..</div> </div>

The following table lists non-polymeric compounds, carbohydrate monomers and non-standard residues in protein, DNA, RNA chains that are outliers for geometric or electron-density-fit criteria:

Mol	Type	Chain	Res	Chirality	Geometry	Clashes	Electron density
2	BGC	A	502	-	-	-	X
2	BGC	A	503	-	-	-	X

Continued on next page...

Continued from previous page...

Mol	Type	Chain	Res	Chirality	Geometry	Clashes	Electron density
3	GLC	A	504	-	-	-	X

2 Entry composition [i](#)

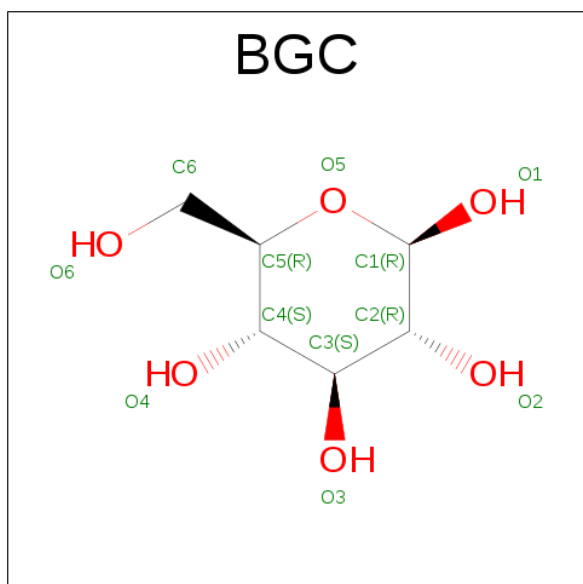
There are 6 unique types of molecules in this entry. The entry contains 3797 atoms, of which 0 are hydrogens and 0 are deuteriums.

In the tables below, the ZeroOcc column contains the number of atoms modelled with zero occupancy, the AltConf column contains the number of residues with at least one atom in alternate conformation and the Trace column contains the number of residues modelled with at most 2 atoms.

- Molecule 1 is a protein called beta-glucosidase.

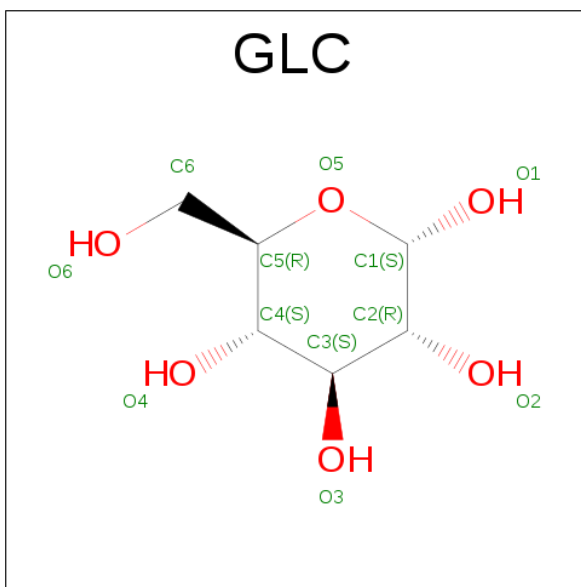
Mol	Chain	Residues	Atoms					ZeroOcc	AltConf	Trace
			Total	C	N	O	S			
1	A	443	3480	2220	605	641	14	0	1	0

- Molecule 2 is SUGAR (BETA-D-GLUCOSE) (three-letter code: BGC) (formula: C₆H₁₂O₆).



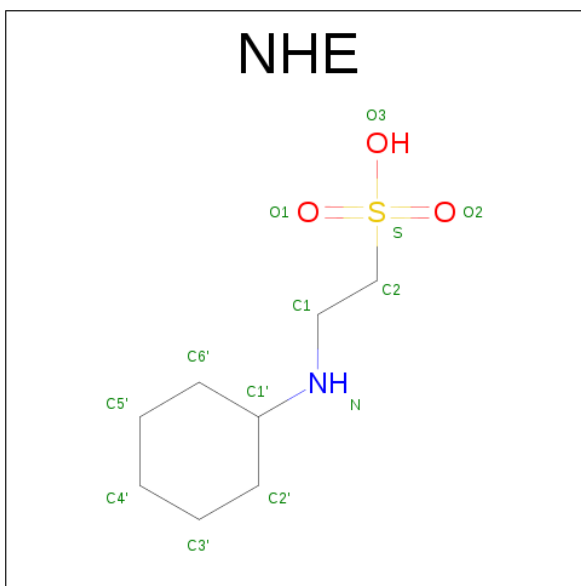
Mol	Chain	Residues	Atoms			ZeroOcc	AltConf
			Total	C	O		
2	A	1	12	6	6	0	0
2	A	1	12	6	6	0	0
2	A	1	12	6	6	0	0

- Molecule 3 is SUGAR (ALPHA-D-GLUCOSE) (three-letter code: GLC) (formula: C₆H₁₂O₆).



Mol	Chain	Residues	Atoms			ZeroOcc	AltConf
3	A	1	Total	C	O	0	0
			12	6	6		

- Molecule 4 is 2-[N-CYCLOHEXYLAMINO]ETHANE SULFONIC ACID (three-letter code: NHE) (formula: $C_8H_{17}NO_3S$).



Mol	Chain	Residues	Atoms					ZeroOcc	AltConf
4	A	1	Total	C	N	O	S	0	0
			13	8	1	3	1		

- Molecule 5 is SODIUM ION (three-letter code: NA) (formula: Na).

Mol	Chain	Residues	Atoms		ZeroOcc	AltConf
5	A	1	Total 1	Na 1	0	0

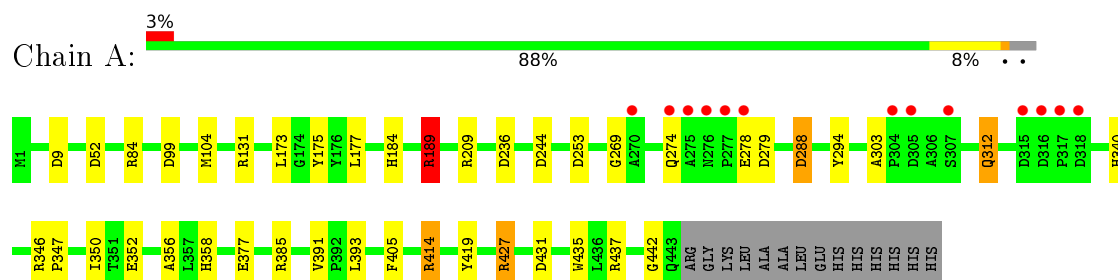
- Molecule 6 is water.

Mol	Chain	Residues	Atoms		ZeroOcc	AltConf
6	A	255	Total 255	O 255	0	0

3 Residue-property plots

These plots are drawn for all protein, RNA and DNA chains in the entry. The first graphic for a chain summarises the proportions of errors displayed in the second graphic. The second graphic shows the sequence view annotated by issues in geometry and electron density. Residues are color-coded according to the number of geometric quality criteria for which they contain at least one outlier: green = 0, yellow = 1, orange = 2 and red = 3 or more. A red dot above a residue indicates a poor fit to the electron density ($RSRZ > 2$). Stretches of 2 or more consecutive residues without any outlier are shown as a green connector. Residues present in the sample, but not in the model, are shown in grey.

- Molecule 1: beta-glucosidase



4 Data and refinement statistics

Property	Value	Source
Space group	P 21 21 21	Depositor
Cell constants a, b, c, α , β , γ	68.09Å 68.45Å 95.86Å 90.00° 90.00° 90.00°	Depositor
Resolution (Å)	32.23 – 1.60 32.23 – 1.60	Depositor EDS
% Data completeness (in resolution range)	99.2 (32.23-1.60) 99.3 (32.23-1.60)	Depositor EDS
R_{merge}	(Not available)	Depositor
R_{sym}	0.06	Depositor
$\langle I/\sigma(I) \rangle$ ¹	3.24 (at 1.60Å)	Xtriage
Refinement program	REFMAC 5.7.0029	Depositor
R, R_{free}	0.157 , 0.190 0.170 , 0.202	Depositor DCC
R_{free} test set	3005 reflections (5.30%)	DCC
Wilson B-factor (Å ²)	18.1	Xtriage
Anisotropy	0.139	Xtriage
Bulk solvent k_{sol} (e/Å ³), B_{sol} (Å ²)	0.42 , 46.4	EDS
L-test for twinning ²	$\langle L \rangle = 0.51$, $\langle L^2 \rangle = 0.35$	Xtriage
Estimated twinning fraction	0.012 for k,h,-l	Xtriage
F_o, F_c correlation	0.97	EDS
Total number of atoms	3797	wwPDB-VP
Average B, all atoms (Å ²)	21.0	wwPDB-VP

Xtriage's analysis on translational NCS is as follows: *The largest off-origin peak in the Patterson function is 4.29% of the height of the origin peak. No significant pseudotranslation is detected.*

¹Intensities estimated from amplitudes.

²Theoretical values of $\langle |L| \rangle$, $\langle L^2 \rangle$ for acentric reflections are 0.5, 0.375 respectively for untwinned datasets, and 0.333, 0.2 for perfectly twinned datasets.

5 Model quality [i](#)

5.1 Standard geometry [i](#)

Bond lengths and bond angles in the following residue types are not validated in this section: NHE, NA, GLC, BGC

The Z score for a bond length (or angle) is the number of standard deviations the observed value is removed from the expected value. A bond length (or angle) with $|Z| > 5$ is considered an outlier worth inspection. RMSZ is the root-mean-square of all Z scores of the bond lengths (or angles).

Mol	Chain	Bond lengths		Bond angles	
		RMSZ	$\# Z > 5$	RMSZ	$\# Z > 5$
1	A	1.18	2/3587 (0.1%)	1.30	28/4897 (0.6%)

Chiral center outliers are detected by calculating the chiral volume of a chiral center and verifying if the center is modelled as a planar moiety or with the opposite hand. A planarity outlier is detected by checking planarity of atoms in a peptide group, atoms in a mainchain group or atoms of a sidechain that are expected to be planar.

Mol	Chain	#Chirality outliers	#Planarity outliers
1	A	0	1

All (2) bond length outliers are listed below:

Mol	Chain	Res	Type	Atoms	Z	Observed(Å)	Ideal(Å)
1	A	346	ARG	CZ-NH2	7.59	1.43	1.33
1	A	419	TYR	CG-CD1	-5.53	1.31	1.39

All (28) bond angle outliers are listed below:

Mol	Chain	Res	Type	Atoms	Z	Observed(°)	Ideal(°)
1	A	346	ARG	NE-CZ-NH2	17.08	128.84	120.30
1	A	346	ARG	NE-CZ-NH1	-16.59	112.00	120.30
1	A	84	ARG	NE-CZ-NH2	-14.53	113.04	120.30
1	A	385	ARG	NE-CZ-NH1	11.24	125.92	120.30
1	A	189	ARG	NE-CZ-NH2	9.93	125.27	120.30
1	A	279	ASP	CB-CG-OD1	8.27	125.74	118.30
1	A	427	ARG	NE-CZ-NH1	7.99	124.30	120.30
1	A	253	ASP	CB-CG-OD1	7.96	125.46	118.30
1	A	288	ASP	CB-CG-OD2	7.87	125.38	118.30
1	A	189	ARG	NE-CZ-NH1	-7.79	116.41	120.30
1	A	52	ASP	CB-CG-OD1	7.18	124.76	118.30

Continued on next page...

Continued from previous page...

Mol	Chain	Res	Type	Atoms	Z	Observed(°)	Ideal(°)
1	A	437	ARG	NE-CZ-NH2	-7.01	116.80	120.30
1	A	253	ASP	CB-CG-OD2	-6.92	112.07	118.30
1	A	9	ASP	CB-CG-OD1	6.49	124.14	118.30
1	A	294	TYR	CB-CG-CD1	-6.37	117.18	121.00
1	A	209	ARG	NE-CZ-NH2	-6.37	117.11	120.30
1	A	346	ARG	CD-NE-CZ	6.18	132.25	123.60
1	A	131	ARG	NE-CZ-NH1	5.96	123.28	120.30
1	A	431	ASP	CB-CG-OD1	5.83	123.55	118.30
1	A	385	ARG	NE-CZ-NH2	-5.73	117.44	120.30
1	A	414	ARG	NE-CZ-NH2	5.70	123.15	120.30
1	A	131	ARG	NE-CZ-NH2	-5.57	117.52	120.30
1	A	104	MET	CG-SD-CE	-5.48	91.43	100.20
1	A	99	ASP	CB-CG-OD2	-5.38	113.46	118.30
1	A	405	PHE	CB-CG-CD2	5.37	124.56	120.80
1	A	244	ASP	CB-CG-OD2	5.35	123.11	118.30
1	A	288	ASP	CB-CG-OD1	-5.32	113.51	118.30
1	A	236	ASP	CB-CG-OD2	-5.04	113.76	118.30

There are no chirality outliers.

All (1) planarity outliers are listed below:

Mol	Chain	Res	Type	Group
1	A	442	GLY	Peptide

5.2 Too-close contacts

In the following table, the Non-H and H(model) columns list the number of non-hydrogen atoms and hydrogen atoms in the chain respectively. The H(added) column lists the number of hydrogen atoms added and optimized by MolProbity. The Clashes column lists the number of clashes within the asymmetric unit, whereas Symm-Clashes lists symmetry related clashes.

Mol	Chain	Non-H	H(model)	H(added)	Clashes	Symm-Clashes
1	A	3480	0	3311	15	0
2	A	36	0	36	1	0
3	A	12	0	12	1	0
4	A	13	0	16	0	0
5	A	1	0	0	0	0
6	A	255	0	0	0	0
All	All	3797	0	3375	15	0

The all-atom clashscore is defined as the number of clashes found per 1000 atoms (including

hydrogen atoms). The all-atom clashscore for this structure is 2.

All (15) close contacts within the same asymmetric unit are listed below, sorted by their clash magnitude.

Atom-1	Atom-2	Interatomic distance (Å)	Clash overlap (Å)
1:A:303:ALA:HB2	1:A:312:GLN:HG3	1.65	0.79
1:A:303:ALA:HB2	1:A:312:GLN:CG	2.22	0.68
1:A:303:ALA:CB	1:A:312:GLN:CG	2.91	0.47
1:A:303:ALA:CB	1:A:312:GLN:HG2	2.45	0.46
1:A:356:ALA:HA	1:A:414:ARG:O	2.17	0.45
1:A:288:ASP:O	1:A:347:PRO:HD2	2.18	0.44
1:A:189:ARG:HG2	1:A:189:ARG:HH21	1.83	0.44
1:A:173:LEU:HD23	1:A:177:LEU:HD12	2.00	0.44
1:A:340:HIS:HB2	1:A:391:VAL:HG22	2.00	0.44
1:A:303:ALA:HB2	1:A:312:GLN:HG2	2.01	0.42
1:A:377:GLU:HG2	1:A:435:TRP:CZ2	2.54	0.41
1:A:350:ILE:HG12	1:A:393:LEU:HD11	2.03	0.41
1:A:352:GLU:OE1	2:A:501:BGC:H1	2.20	0.41
1:A:175:TYR:HA	1:A:184:HIS:HB2	2.03	0.41
1:A:358:HIS:ND1	3:A:504:GLC:H1	2.36	0.40

There are no symmetry-related clashes.

5.3 Torsion angles

5.3.1 Protein backbone

In the following table, the Percentiles column shows the percent Ramachandran outliers of the chain as a percentile score with respect to all X-ray entries followed by that with respect to entries of similar resolution.

The Analysed column shows the number of residues for which the backbone conformation was analysed, and the total number of residues.

Mol	Chain	Analysed	Favoured	Allowed	Outliers	Percentiles
1	A	442/457 (97%)	428 (97%)	13 (3%)	1 (0%)	52 28

All (1) Ramachandran outliers are listed below:

Mol	Chain	Res	Type
1	A	269	GLY

5.3.2 Protein sidechains [i](#)

In the following table, the Percentiles column shows the percent sidechain outliers of the chain as a percentile score with respect to all X-ray entries followed by that with respect to entries of similar resolution.

The Analysed column shows the number of residues for which the sidechain conformation was analysed, and the total number of residues.

Mol	Chain	Analysed	Rotameric	Outliers	Percentiles	
1	A	346/356 (97%)	341 (99%)	5 (1%)	74	53

All (5) residues with a non-rotameric sidechain are listed below:

Mol	Chain	Res	Type
1	A	189	ARG
1	A	274	GLN
1	A	278	GLU
1	A	312	GLN
1	A	427	ARG

Some sidechains can be flipped to improve hydrogen bonding and reduce clashes. There are no such sidechains identified.

5.3.3 RNA [i](#)

There are no RNA molecules in this entry.

5.4 Non-standard residues in protein, DNA, RNA chains [i](#)

There are no non-standard protein/DNA/RNA residues in this entry.

5.5 Carbohydrates [i](#)

There are no carbohydrates in this entry.

5.6 Ligand geometry [i](#)

Of 6 ligands modelled in this entry, 1 is monoatomic - leaving 5 for Mogul analysis.

In the following table, the Counts columns list the number of bonds (or angles) for which Mogul statistics could be retrieved, the number of bonds (or angles) that are observed in the model and

the number of bonds (or angles) that are defined in the chemical component dictionary. The Link column lists molecule types, if any, to which the group is linked. The Z score for a bond length (or angle) is the number of standard deviations the observed value is removed from the expected value. A bond length (or angle) with $|Z| > 2$ is considered an outlier worth inspection. RMSZ is the root-mean-square of all Z scores of the bond lengths (or angles).

Mol	Type	Chain	Res	Link	Bond lengths			Bond angles		
					Counts	RMSZ	# Z > 2	Counts	RMSZ	# Z > 2
2	BGC	A	501	-	12,12,12	1.13	1 (8%)	17,17,17	2.24	5 (29%)
2	BGC	A	502	-	12,12,12	1.26	1 (8%)	17,17,17	1.01	1 (5%)
2	BGC	A	503	-	12,12,12	0.88	1 (8%)	17,17,17	1.49	5 (29%)
3	GLC	A	504	-	12,12,12	0.88	0	17,17,17	2.95	4 (23%)
4	NHE	A	505	-	13,13,13	1.24	2 (15%)	16,17,17	2.80	5 (31%)

In the following table, the Chirals column lists the number of chiral outliers, the number of chiral centers analysed, the number of these observed in the model and the number defined in the chemical component dictionary. Similar counts are reported in the Torsion and Rings columns. '-' means no outliers of that kind were identified.

Mol	Type	Chain	Res	Link	Chirals	Torsions	Rings
2	BGC	A	501	-	-	0/2/22/22	0/1/1/1
2	BGC	A	502	-	-	0/2/22/22	0/1/1/1
2	BGC	A	503	-	-	0/2/22/22	0/1/1/1
3	GLC	A	504	-	-	0/2/22/22	0/1/1/1
4	NHE	A	505	-	-	0/7/15/15	0/1/1/1

All (5) bond length outliers are listed below:

Mol	Chain	Res	Type	Atoms	Z	Observed(Å)	Ideal(Å)
4	A	505	NHE	C2-S	-2.64	1.73	1.77
4	A	505	NHE	C6'-C1'	-2.10	1.46	1.51
2	A	502	BGC	C4-C5	2.21	1.57	1.53
2	A	503	BGC	C1-C2	2.34	1.57	1.52
2	A	501	BGC	O1-C1	2.38	1.47	1.39

All (20) bond angle outliers are listed below:

Mol	Chain	Res	Type	Atoms	Z	Observed(°)	Ideal(°)
3	A	504	GLC	O5-C1-C2	-6.16	99.22	110.00
2	A	501	BGC	O1-C1-O5	-4.06	99.01	110.33
2	A	501	BGC	C4-C3-C2	-3.47	104.40	110.79
2	A	501	BGC	C3-C4-C5	-2.89	105.08	110.23
2	A	503	BGC	O4-C4-C3	-2.43	104.89	110.36

Continued on next page...

Continued from previous page...

Mol	Chain	Res	Type	Atoms	Z	Observed(°)	Ideal(°)
3	A	504	GLC	O1-C1-C2	-2.25	102.84	109.05
2	A	502	BGC	C3-C4-C5	-2.18	106.34	110.23
3	A	504	GLC	O6-C6-C5	-2.18	104.04	111.30
2	A	503	BGC	O4-C4-C5	-2.16	103.53	109.23
2	A	501	BGC	C1-C2-C3	2.06	114.05	110.68
4	A	505	NHE	C3'-C2'-C1'	2.10	114.37	111.15
4	A	505	NHE	C4'-C3'-C2'	2.11	115.80	111.44
2	A	503	BGC	O5-C5-C4	2.12	113.71	109.67
4	A	505	NHE	C5'-C4'-C3'	2.53	119.07	111.24
2	A	503	BGC	O5-C1-C2	2.56	114.48	110.00
2	A	503	BGC	C3-C4-C5	2.58	114.82	110.23
4	A	505	NHE	C5'-C6'-C1'	2.81	115.45	111.15
2	A	501	BGC	O5-C1-C2	5.28	119.24	110.00
3	A	504	GLC	O1-C1-O5	9.18	135.90	110.33
4	A	505	NHE	C6'-C1'-C2'	9.47	126.64	110.87

There are no chirality outliers.

There are no torsion outliers.

There are no ring outliers.

2 monomers are involved in 2 short contacts:

Mol	Chain	Res	Type	Clashes	Symm-Clashes
2	A	501	BGC	1	0
3	A	504	GLC	1	0

5.7 Other polymers [i](#)

There are no such residues in this entry.

5.8 Polymer linkage issues [i](#)

There are no chain breaks in this entry.

6 Fit of model and data [i](#)

6.1 Protein, DNA and RNA chains [i](#)

In the following table, the column labelled ‘#RSRZ> 2’ contains the number (and percentage) of RSRZ outliers, followed by percent RSRZ outliers for the chain as percentile scores relative to all X-ray entries and entries of similar resolution. The OWAB column contains the minimum, median, 95th percentile and maximum values of the occupancy-weighted average B-factor per residue. The column labelled ‘Q< 0.9’ lists the number of (and percentage) of residues with an average occupancy less than 0.9.

Mol	Chain	Analysed	<RSRZ>	#RSRZ>2	OWAB(Å ²)	Q<0.9
1	A	443/457 (96%)	-0.24	13 (2%) 55 53	12, 18, 37, 74	0

All (13) RSRZ outliers are listed below:

Mol	Chain	Res	Type	RSRZ
1	A	274	GLN	4.7
1	A	318	ASP	4.4
1	A	317	PRO	4.1
1	A	315	ASP	3.8
1	A	275	ALA	3.6
1	A	276	ASN	3.3
1	A	277	PRO	3.1
1	A	307	SER	3.1
1	A	305	ASP	2.8
1	A	278	GLU	2.6
1	A	270	ALA	2.4
1	A	304	PRO	2.3
1	A	316	ASP	2.0

6.2 Non-standard residues in protein, DNA, RNA chains [i](#)

There are no non-standard protein/DNA/RNA residues in this entry.

6.3 Carbohydrates [i](#)

There are no carbohydrates in this entry.

6.4 Ligands [i](#)

In the following table, the Atoms column lists the number of modelled atoms in the group and the number defined in the chemical component dictionary. LLDF column lists the quality of electron density of the group with respect to its neighbouring residues in protein, DNA or RNA chains. The B-factors column lists the minimum, median, 95th percentile and maximum values of B factors of atoms in the group. The column labelled 'Q< 0.9' lists the number of atoms with occupancy less than 0.9.

Mol	Type	Chain	Res	Atoms	RSCC	RSR	LLDF	B-factors(Å ²)	Q<0.9
2	BGC	A	503	12/12	0.91	0.17	8.91	22,30,41,42	0
3	GLC	A	504	12/12	0.79	0.23	8.19	35,38,39,39	0
2	BGC	A	502	12/12	0.97	0.13	3.10	19,21,23,23	0
2	BGC	A	501	12/12	0.96	0.11	0.24	14,18,21,25	0
4	NHE	A	505	13/13	0.98	0.06	-0.94	19,21,25,28	0
5	NA	A	506	1/1	0.98	0.18	-	29,29,29,29	0

6.5 Other polymers [i](#)

There are no such residues in this entry.