



Full wwPDB X-ray Structure Validation Report ⓘ

Feb 1, 2016 – 10:01 PM GMT

PDB ID : 4WN9
Title : Structure of the Nitrogenase MoFe Protein from *Clostridium pasteurianum*
Pressurized with Xenon
Authors : Morrison, C.N.; Hoy, J.A.; Rees, D.C.
Deposited on : 2014-10-11
Resolution : 1.90 Å(reported)

This is a Full wwPDB X-ray Structure Validation Report for a publicly released PDB entry.
We welcome your comments at validation@mail.wwpdb.org
A user guide is available at
<http://wwpdb.org/validation/2016/XrayValidationReportHelp>
with specific help available everywhere you see the ⓘ symbol.

The following versions of software and data (see [references ⓘ](#)) were used in the production of this report:

MolProbity : 4.02b-467
Mogul : 1.7 (RC4), CSD as536be (2015)
Xtriage (Phenix) : 1.9-1692
EDS : rb-20026688
Percentile statistics : 20151230.v01 (using entries in the PDB archive December 30th 2015)
Refmac : 5.8.0135
CCP4 : 6.5.0
Ideal geometry (proteins) : Engh & Huber (2001)
Ideal geometry (DNA, RNA) : Parkinson et al. (1996)
Validation Pipeline (wwPDB-VP) : trunk26865

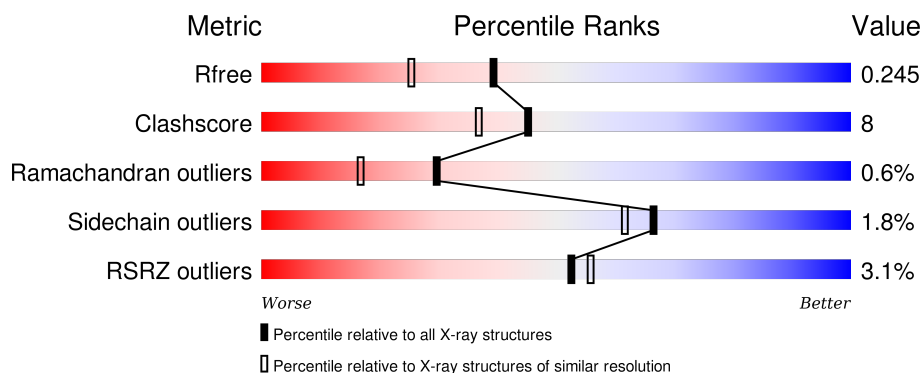
1 Overall quality at a glance

The following experimental techniques were used to determine the structure:

X-RAY DIFFRACTION

The reported resolution of this entry is 1.90 Å.

Percentile scores (ranging between 0-100) for global validation metrics of the entry are shown in the following graphic. The table shows the number of entries on which the scores are based.



Metric	Whole archive (#Entries)	Similar resolution (#Entries, resolution range(Å))
R_{free}	91344	4755 (1.90-1.90)
Clashscore	102246	5398 (1.90-1.90)
Ramachandran outliers	100387	5338 (1.90-1.90)
Sidechain outliers	100360	5339 (1.90-1.90)
RSRZ outliers	91569	4766 (1.90-1.90)

The table below summarises the geometric issues observed across the polymeric chains and their fit to the electron density. The red, orange, yellow and green segments on the lower bar indicate the fraction of residues that contain outliers for ≥ 3 , 2, 1 and 0 types of geometric quality criteria. A grey segment represents the fraction of residues that are not modelled. The numeric value for each fraction is indicated below the corresponding segment, with a dot representing fractions $\leq 5\%$. The upper red bar (where present) indicates the fraction of residues that have poor fit to the electron density. The numeric value is given above the bar.

Mol	Chain	Length	Quality of chain
1	A	518	<div> <div>7%</div> <div>77%</div> <div>21%</div> </div>
1	C	518	<div> <div>3%</div> <div>86%</div> <div>13%</div> </div>
2	B	458	<div> <div>%</div> <div>88%</div> <div>11%</div> </div>
2	D	458	<div> <div>2%</div> <div>89%</div> <div>11%</div> </div>

The following table lists non-polymeric compounds, carbohydrate monomers and non-standard

residues in protein, DNA, RNA chains that are outliers for geometric or electron-density-fit criteria:

Mol	Type	Chain	Res	Chirality	Geometry	Clashes	Electron density
5	XE	A	604	-	-	X	-
5	XE	C	603	-	-	X	-
7	PRO	B	502	-	-	-	X
7	PRO	D	502	-	-	X	X

2 Entry composition [i](#)

There are 9 unique types of molecules in this entry. The entry contains 16724 atoms, of which 0 are hydrogens and 0 are deuteriums.

In the tables below, the ZeroOcc column contains the number of atoms modelled with zero occupancy, the AltConf column contains the number of residues with at least one atom in alternate conformation and the Trace column contains the number of residues modelled with at most 2 atoms.

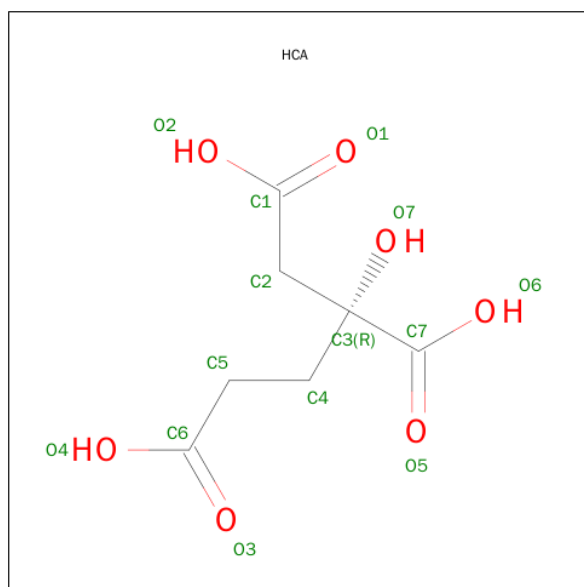
- Molecule 1 is a protein called Nitrogenase molybdenum-iron protein alpha chain.

Mol	Chain	Residues	Atoms					ZeroOcc	AltConf	Trace
1	A	517	Total	C	N	O	S	5	2	0
			4042	2570	675	770	27			
1	C	517	Total	C	N	O	S	0	1	0
			4040	2569	675	769	27			

- Molecule 2 is a protein called Nitrogenase molybdenum-iron protein beta chain.

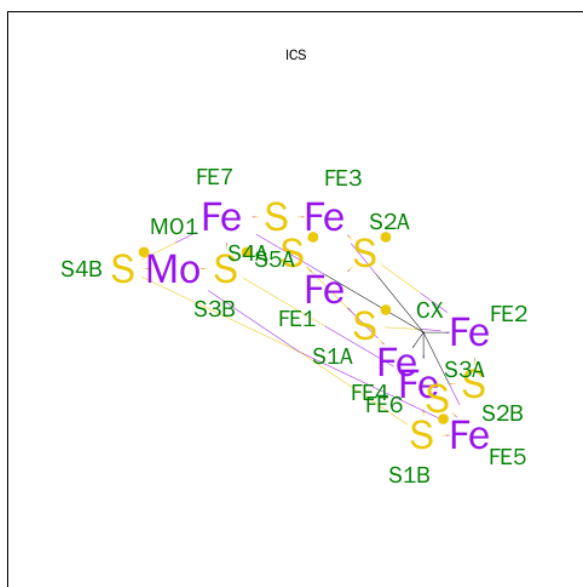
Mol	Chain	Residues	Atoms					ZeroOcc	AltConf	Trace
2	B	458	Total	C	N	O	S	0	2	0
			3528	2242	580	685	21			
2	D	458	Total	C	N	O	S	0	1	0
			3522	2238	580	683	21			

- Molecule 3 is 3-HYDROXY-3-CARBOXY-ADIPIC ACID (three-letter code: HCA) (formula: $C_7H_{10}O_7$).



Mol	Chain	Residues	Atoms			ZeroOcc	AltConf
3	A	1	Total	C	O	0	0
			14	7	7		
3	C	1	Total	C	O	0	0
			14	7	7		

- Molecule 4 is iron-sulfur-molybdenum cluster with interstitial carbon (three-letter code: ICS) (formula: CFe_7MoS_9).

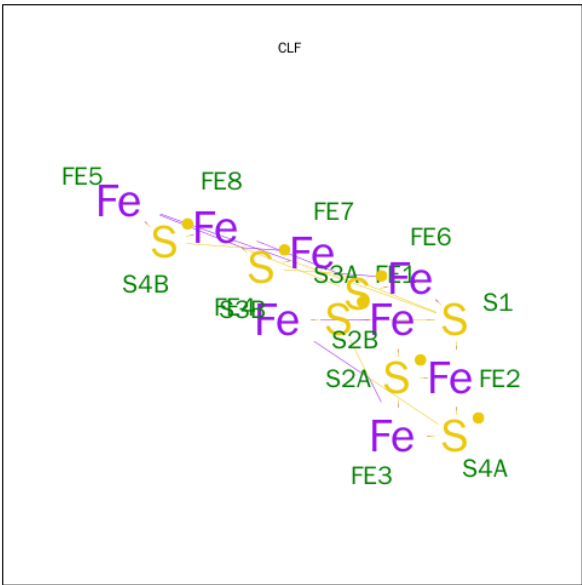


Mol	Chain	Residues	Atoms				ZeroOcc	AltConf
4	A	1	Total	C	Fe	Mo	S	
			18	1	7	1	9	0
4	C	1	Total	C	Fe	Mo	S	
			18	1	7	1	9	0

- Molecule 5 is XENON (three-letter code: XE) (formula: Xe).

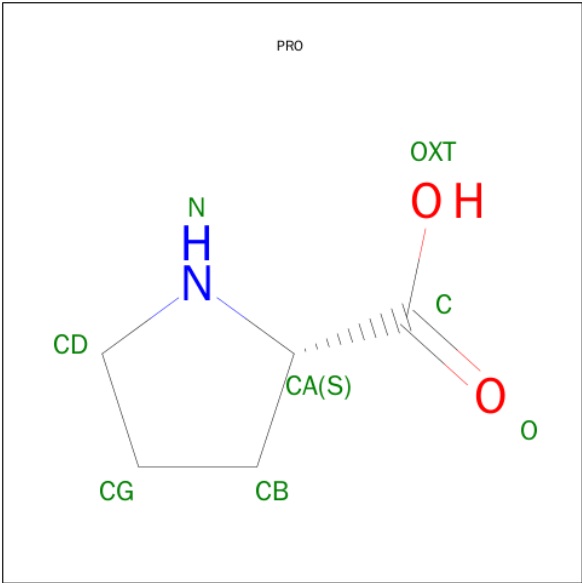
Mol	Chain	Residues	Atoms		ZeroOcc	AltConf
5	B	1	Total	Xe	0	0
			1	1		
5	A	2	Total	Xe	0	0
			2	2		
5	D	1	Total	Xe	0	0
			1	1		
5	C	2	Total	Xe	0	0
			2	2		

- Molecule 6 is FE(8)-S(7) CLUSTER (three-letter code: CLF) (formula: Fe_8S_7).



Mol	Chain	Residues	Atoms			ZeroOcc	AltConf
6	A	1	Total	Fe	S	0	0
			15	8	7		
6	C	1	Total	Fe	S	0	0
			15	8	7		

- Molecule 7 is PROLINE (three-letter code: PRO) (formula: C₅H₉NO₂).



Mol	Chain	Residues	Atoms				ZeroOcc	AltConf
7	B	1	Total	C	N	O	0	0
			8	5	1	2		
7	D	1	Total	C	N	O	0	0
			8	5	1	2		

- Molecule 8 is FE (III) ION (three-letter code: FE) (formula: Fe).

Mol	Chain	Residues	Atoms		ZeroOcc	AltConf
8	B	2	Total 2	Fe 2	0	0

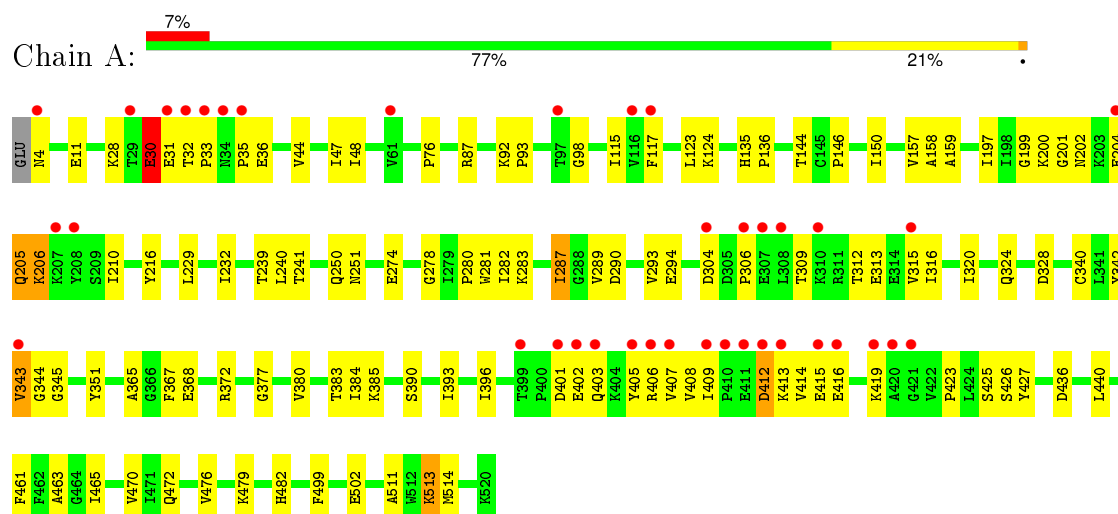
- Molecule 9 is water.

Mol	Chain	Residues	Atoms		ZeroOcc	AltConf
9	A	331	Total 331	O 331	0	0
9	B	400	Total 400	O 400	0	0
9	C	398	Total 398	O 398	0	0
9	D	345	Total 345	O 345	0	0

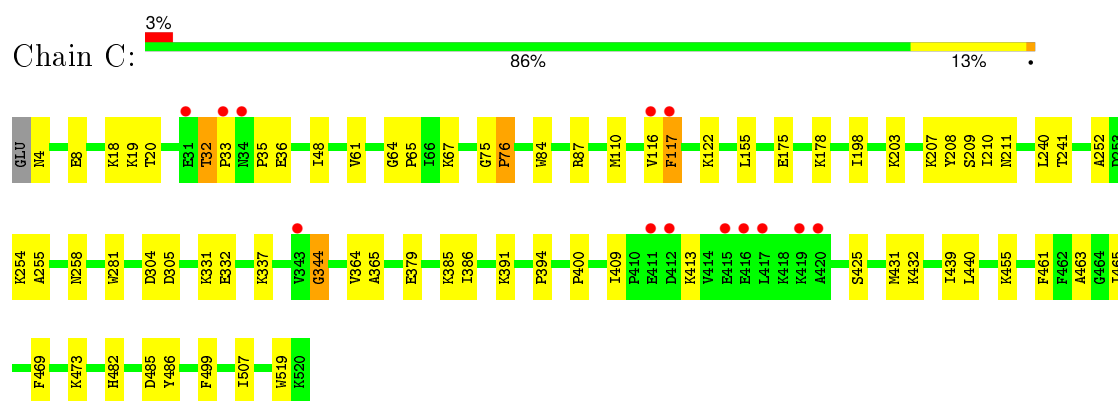
3 Residue-property plots

These plots are drawn for all protein, RNA and DNA chains in the entry. The first graphic for a chain summarises the proportions of errors displayed in the second graphic. The second graphic shows the sequence view annotated by issues in geometry and electron density. Residues are color-coded according to the number of geometric quality criteria for which they contain at least one outlier: green = 0, yellow = 1, orange = 2 and red = 3 or more. A red dot above a residue indicates a poor fit to the electron density ($RSRZ > 2$). Stretches of 2 or more consecutive residues without any outlier are shown as a green connector. Residues present in the sample, but not in the model, are shown in grey.

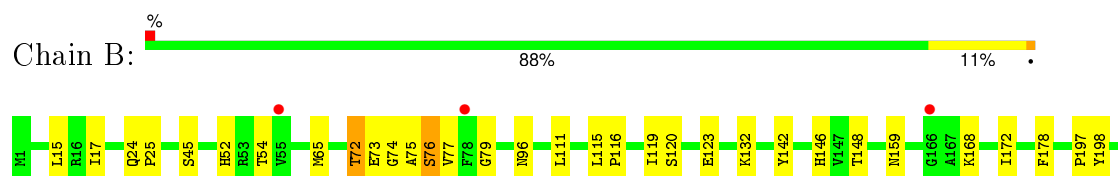
- Molecule 1: Nitrogenase molybdenum-iron protein alpha chain



- Molecule 1: Nitrogenase molybdenum-iron protein alpha chain

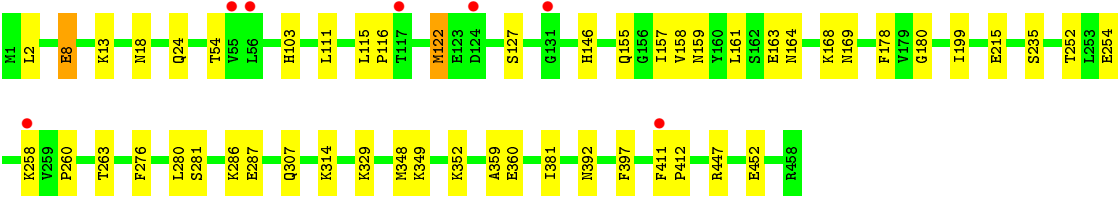
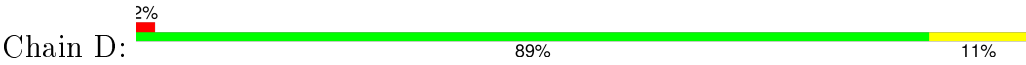


- Molecule 2: Nitrogenase molybdenum-iron protein beta chain





● Molecule 2: Nitrogenase molybdenum-iron protein beta chain



4 Data and refinement statistics

Property	Value	Source
Space group	P 1	Depositor
Cell constants a, b, c, α , β , γ	67.31Å 73.45Å 108.66Å 73.47° 87.56° 83.98°	Depositor
Resolution (Å)	39.75 – 1.90 39.72 – 1.90	Depositor EDS
% Data completeness (in resolution range)	88.6 (39.75-1.90) 80.8 (39.72-1.90)	Depositor EDS
R_{merge}	(Not available)	Depositor
R_{sym}	(Not available)	Depositor
$\langle I/\sigma(I) \rangle$ ¹	2.17 (at 1.89Å)	Xtriage
Refinement program	REFMAC 5.8.0073	Depositor
R, R_{free}	0.179 , 0.234 0.192 , 0.245	Depositor DCC
R_{free} test set	6918 reflections (5.26%)	DCC
Wilson B-factor (Å ²)	22.7	Xtriage
Anisotropy	0.047	Xtriage
Bulk solvent k_{sol} (e/Å ³), B_{sol} (Å ²)	0.31 , 42.5	EDS
Estimated twinning fraction	No twinning to report.	Xtriage
L-test for twinning ²	$\langle L \rangle = 0.48$, $\langle L^2 \rangle = 0.31$	Xtriage
Outliers	0 of 138529 reflections	Xtriage
F_o, F_c correlation	0.96	EDS
Total number of atoms	16724	wwPDB-VP
Average B, all atoms (Å ²)	31.0	wwPDB-VP

Xtriage's analysis on translational NCS is as follows: *The largest off-origin peak in the Patterson function is 4.13% of the height of the origin peak. No significant pseudotranslation is detected.*

¹Intensities estimated from amplitudes.

²Theoretical values of $\langle |L| \rangle$, $\langle L^2 \rangle$ for acentric reflections are 0.5, 0.375 respectively for untwinned datasets, and 0.333, 0.2 for perfectly twinned datasets.

5 Model quality [i](#)

5.1 Standard geometry [i](#)

Bond lengths and bond angles in the following residue types are not validated in this section: ICS, CLF, HCA, FE, XE

The Z score for a bond length (or angle) is the number of standard deviations the observed value is removed from the expected value. A bond length (or angle) with $|Z| > 5$ is considered an outlier worth inspection. RMSZ is the root-mean-square of all Z scores of the bond lengths (or angles).

Mol	Chain	Bond lengths		Bond angles	
		RMSZ	# Z >5	RMSZ	# Z >5
1	A	0.42	1/4137 (0.0%)	0.60	1/5591 (0.0%)
1	C	0.41	0/4132	0.59	0/5584
2	B	0.49	0/3605	0.63	0/4875
2	D	0.48	0/3596	0.62	0/4863
All	All	0.45	1/15470 (0.0%)	0.61	1/20913 (0.0%)

All (1) bond length outliers are listed below:

Mol	Chain	Res	Type	Atoms	Z	Observed(Å)	Ideal(Å)
1	A	30	GLU	CA-CB	8.92	1.73	1.53

All (1) bond angle outliers are listed below:

Mol	Chain	Res	Type	Atoms	Z	Observed(°)	Ideal(°)
1	A	30	GLU	N-CA-CB	-8.64	95.05	110.60

There are no chirality outliers.

There are no planarity outliers.

5.2 Too-close contacts [i](#)

In the following table, the Non-H and H(model) columns list the number of non-hydrogen atoms and hydrogen atoms in the chain respectively. The H(added) column lists the number of hydrogen atoms added and optimized by MolProbity. The Clashes column lists the number of clashes within the asymmetric unit, whereas Symm-Clashes lists symmetry related clashes.

Mol	Chain	Non-H	H(model)	H(added)	Clashes	Symm-Clashes
1	A	4042	0	3989	91	2
1	C	4040	0	3986	65	0

Continued on next page...

Continued from previous page...

Mol	Chain	Non-H	H(model)	H(added)	Clashes	Symm-Clashes
2	B	3528	0	3518	47	0
2	D	3522	0	3512	40	0
3	A	14	0	6	2	0
3	C	14	0	6	3	0
4	A	18	0	0	0	0
4	C	18	0	0	2	0
5	A	2	0	0	4	0
5	B	1	0	0	1	0
5	C	2	0	0	2	0
5	D	1	0	0	0	0
6	A	15	0	0	2	0
6	C	15	0	0	1	0
7	B	8	0	7	2	0
7	D	8	0	7	4	0
8	B	2	0	0	0	0
9	A	331	0	0	20	0
9	B	400	0	0	12	1
9	C	398	0	0	22	1
9	D	345	0	0	17	0
All	All	16724	0	15031	236	3

The all-atom clashscore is defined as the number of clashes found per 1000 atoms (including hydrogen atoms). The all-atom clashscore for this structure is 8.

All (236) close contacts within the same asymmetric unit are listed below, sorted by their clash magnitude.

Atom-1	Atom-2	Interatomic distance (Å)	Clash overlap (Å)
1:C:332:GLU:OE1	9:C:701:HOH:O	1.79	0.99
1:C:4:ASN:N	9:C:997:HOH:O	1.96	0.98
2:B:254:GLU:OE2	9:B:935:HOH:O	1.85	0.94
1:C:203:LYS:O	1:C:254:LYS:HE2	1.66	0.94
1:A:287:ILE:HD11	1:A:351:TYR:HA	1.52	0.92
1:A:309:THR:OG1	9:A:978:HOH:O	1.93	0.86
2:B:278:MET:HA	2:B:278:MET:HE2	1.57	0.85
2:D:281:SER:OG	2:D:286:LYS:O	1.96	0.84
2:D:159:ASN:OD1	9:D:916:HOH:O	1.95	0.84
1:C:379:GLU:OE1	9:C:1039:HOH:O	1.96	0.83
1:A:409:ILE:HD11	5:A:603:XE:XE	2.57	0.83
2:B:159:ASN:OD1	9:B:983:HOH:O	1.96	0.83
1:A:197:ILE:O	1:A:250:GLN:HA	1.77	0.83
1:A:150:ILE:O	9:A:977:HOH:O	1.97	0.81

Continued on next page...

Continued from previous page...

Atom-1	Atom-2	Interatomic distance (Å)	Clash overlap (Å)
2:B:123:GLU:OE1	9:B:601:HOH:O	1.99	0.81
1:A:201:GLY:HA3	1:A:251:ASN:OD1	1.81	0.80
2:B:353:GLU:O	9:B:988:HOH:O	1.99	0.80
1:A:33:PRO:O	9:A:959:HOH:O	2.01	0.77
1:A:407:VAL:HG12	1:A:407:VAL:O	1.85	0.76
1:A:239:THR:OG1	9:A:934:HOH:O	2.04	0.75
1:C:400:PRO:O	9:C:1092:HOH:O	2.08	0.70
1:A:205:GLN:CG	1:A:206:LYS:H	2.04	0.70
1:A:199:GLY:O	1:A:201:GLY:N	2.25	0.70
1:A:36:GLU:OE2	9:A:922:HOH:O	2.09	0.69
2:D:452:GLU:OE1	9:D:762:HOH:O	2.11	0.68
2:B:76:SER:HA	2:B:111:LEU:HD11	1.74	0.68
1:C:254:LYS:NZ	9:C:704:HOH:O	2.27	0.67
1:A:425:SER:OG	9:A:889:HOH:O	2.14	0.66
2:B:278:MET:CE	2:B:278:MET:HA	2.25	0.66
1:A:402:GLU:HB3	9:A:997:HOH:O	1.97	0.64
1:C:116:VAL:HG12	1:C:117:PHE:CD1	2.33	0.64
1:A:408:VAL:C	1:A:409:ILE:HD12	2.18	0.64
1:A:412:ASP:HA	1:A:415:GLU:OE1	1.99	0.63
1:A:232:ILE:CG1	1:A:315:VAL:HG21	2.28	0.63
1:A:405:TYR:CD1	1:A:406:ARG:N	2.67	0.63
1:A:205:GLN:HG3	1:A:206:LYS:H	1.63	0.62
1:A:436:ASP:O	9:A:1023:HOH:O	2.16	0.61
1:A:280:PRO:HG3	1:A:409:ILE:HD13	1.82	0.61
2:D:180:GLY:CA	7:D:502:PRO:HA	2.31	0.60
1:A:324:GLN:NE2	1:A:328:ASP:OD1	2.34	0.60
2:D:314:LYS:NZ	9:D:867:HOH:O	2.32	0.60
2:B:197:PRO:HD2	9:B:964:HOH:O	2.00	0.60
1:A:402:GLU:HA	1:A:402:GLU:OE2	2.01	0.59
1:C:499:PHE:CD1	5:C:603:XE:XE	3.33	0.59
1:C:386:ILE:HG21	9:C:724:HOH:O	2.01	0.59
2:D:155:GLN:NE2	9:D:909:HOH:O	2.29	0.59
1:C:116:VAL:HG12	1:C:117:PHE:HD1	1.67	0.59
2:B:75:ALA:C	2:B:77:VAL:H	2.05	0.59
1:C:61:VAL:HA	1:C:87:ARG:NH1	2.18	0.58
2:D:348:MET:SD	9:D:613:HOH:O	2.56	0.58
2:B:278:MET:HE1	1:C:519:TRP:HB3	1.85	0.58
1:C:198:ILE:HG23	1:C:252:ALA:HB3	1.86	0.58
2:B:436:GLU:OE1	9:B:882:HOH:O	2.17	0.58
2:D:381:ILE:O	9:D:735:HOH:O	2.17	0.58
2:D:180:GLY:HA2	7:D:502:PRO:HA	1.86	0.57

Continued on next page...

Continued from previous page...

Atom-1	Atom-2	Interatomic distance (Å)	Clash overlap (Å)
1:A:76:PRO:HB2	6:A:605:CLF:S2B	2.43	0.57
1:A:232:ILE:HG13	1:A:315:VAL:HG21	1.87	0.57
2:B:72:THR:HG23	2:B:73:GLU:N	2.20	0.57
1:A:406:ARG:HD3	1:A:408:VAL:HG22	1.87	0.56
1:A:44:VAL:O	1:A:47:ILE:HG13	2.04	0.56
1:A:482:HIS:HB3	3:A:601:HCA:O5	2.04	0.56
1:C:365:ALA:O	1:C:440:LEU:HA	2.05	0.56
1:A:31:GLU:O	1:A:33:PRO:HD3	2.05	0.56
2:D:276:PHE:O	2:D:280:LEU:HD13	2.05	0.56
1:C:344:GLY:HA3	4:C:602:ICS:S1B	2.46	0.56
1:A:499:PHE:CE1	5:A:604:XE:XE	3.37	0.56
1:A:293:VAL:HG23	1:A:294:GLU:N	2.22	0.55
1:A:409:ILE:HG22	1:A:414:VAL:HG23	1.89	0.55
1:C:19:LYS:NZ	9:C:982:HOH:O	2.39	0.55
6:A:605:CLF:S2A	2:B:45:SER:HB3	2.47	0.54
1:A:205:GLN:CG	1:A:206:LYS:N	2.68	0.54
1:C:332:GLU:O	9:C:702:HOH:O	2.17	0.54
2:D:447:ARG:NH2	9:D:778:HOH:O	2.28	0.54
1:A:407:VAL:CG1	1:A:407:VAL:O	2.56	0.54
1:C:499:PHE:CE1	5:C:603:XE:XE	3.39	0.54
2:B:178:PHE:CZ	7:B:502:PRO:HG3	2.43	0.54
1:A:44:VAL:HB	1:A:47:ILE:HG12	1.90	0.53
1:C:304:ASP:O	1:C:305:ASP:C	2.45	0.53
2:B:411:PHE:HB2	7:B:502:PRO:HA	1.91	0.52
1:C:64:GLY:N	1:C:65:PRO:CD	2.72	0.52
2:D:392:ASN:HB2	2:D:412:PRO:O	2.08	0.52
1:C:35:PRO:HD2	1:C:431:MET:CE	2.39	0.52
1:C:61:VAL:HA	1:C:87:ARG:CZ	2.40	0.52
1:A:199:GLY:C	1:A:201:GLY:H	2.14	0.52
1:A:28:LYS:HE3	9:A:959:HOH:O	2.08	0.52
1:A:93:PRO:HB3	1:A:98:GLY:O	2.09	0.52
2:B:24:GLN:HA	2:B:146:HIS:HA	1.90	0.52
1:A:313:GLU:HG2	9:A:1031:HOH:O	2.10	0.51
1:A:204:GLU:OE2	1:A:205:GLN:O	2.28	0.51
1:C:207:LYS:HG2	1:C:208:TYR:CE2	2.45	0.51
1:C:469:PHE:O	1:C:473:LYS:HG2	2.12	0.50
1:C:122:LYS:N	9:C:1048:HOH:O	2.22	0.50
1:A:402:GLU:CA	1:A:402:GLU:OE2	2.60	0.50
1:A:92:LYS:HB2	1:A:93:PRO:CD	2.41	0.50
1:C:337:LYS:NZ	9:C:705:HOH:O	2.28	0.50
1:C:35:PRO:CD	1:C:431:MET:HE1	2.43	0.49

Continued on next page...

Continued from previous page...

Atom-1	Atom-2	Interatomic distance (Å)	Clash overlap (Å)
2:D:24:GLN:HA	2:D:146:HIS:HA	1.94	0.49
1:A:416:GLU:O	1:A:419:LYS:HB3	2.12	0.49
1:C:116:VAL:HA	9:C:703:HOH:O	2.12	0.49
1:A:465:ILE:HG21	2:B:54:THR:HG23	1.95	0.49
1:C:482:HIS:CE1	4:C:602:ICS:S1B	3.04	0.49
1:A:499:PHE:CD1	5:A:604:XE:XE	3.43	0.49
2:B:72:THR:CG2	2:B:74:GLY:H	2.26	0.49
1:A:408:VAL:HG12	1:A:409:ILE:HD12	1.94	0.49
1:C:175:GLU:OE1	1:C:178:LYS:HE2	2.13	0.49
1:C:76:PRO:HB2	6:C:605:CLF:S2B	2.53	0.49
1:C:20:THR:HG23	9:C:899:HOH:O	2.11	0.48
2:D:2:LEU:HD11	2:D:397:PHE:HB3	1.95	0.48
2:D:8:GLU:HG2	9:D:944:HOH:O	2.12	0.48
1:A:365:ALA:O	1:A:440:LEU:HA	2.13	0.48
1:C:8:GLU:CD	1:C:455:LYS:HE3	2.34	0.48
1:C:117:PHE:CD1	1:C:117:PHE:N	2.81	0.48
1:C:281:TRP:CE2	1:C:425:SER:HA	2.48	0.48
1:A:502:GLU:OE1	9:A:886:HOH:O	2.20	0.48
2:B:392:ASN:HB2	2:B:412:PRO:O	2.13	0.48
2:D:157:ILE:HG23	2:D:161:LEU:HD12	1.95	0.48
1:C:210:ILE:HD12	1:C:210:ILE:C	2.34	0.48
2:B:172:ILE:O	2:B:198:TYR:HA	2.13	0.48
1:C:409:ILE:HG22	1:C:413:LYS:HB3	1.96	0.48
1:A:511:ALA:HA	1:A:514:MET:HG3	1.95	0.48
1:C:155:LEU:HB2	9:C:965:HOH:O	2.13	0.48
2:B:258:LYS:HE2	9:B:909:HOH:O	2.13	0.48
1:A:159:ALA:N	9:A:839:HOH:O	2.46	0.47
2:B:115:LEU:N	2:B:116:PRO:CD	2.77	0.47
2:B:371:GLU:OE1	9:B:680:HOH:O	2.20	0.47
2:D:254:GLU:O	2:D:258:LYS:N	2.43	0.47
1:A:409:ILE:HD12	1:A:409:ILE:N	2.29	0.47
2:B:72:THR:HG23	2:B:74:GLY:H	1.80	0.47
1:A:283:LYS:HE3	1:A:427:TYR:CE1	2.49	0.47
2:D:158:VAL:CG1	2:D:252:THR:HG22	2.45	0.47
2:D:199:ILE:HD11	9:D:790:HOH:O	2.14	0.47
1:C:36[A]:GLU:CG	9:C:1022:HOH:O	2.63	0.47
2:D:158:VAL:HG11	2:D:252:THR:HG22	1.96	0.47
1:C:209:SER:HB3	1:C:255:ALA:HA	1.97	0.47
1:A:390:SER:HB3	1:A:393:ILE:HD12	1.97	0.47
1:A:343:VAL:HG12	1:A:344:GLY:H	1.79	0.47
1:A:159:ALA:HA	9:A:839:HOH:O	2.15	0.47

Continued on next page...

Continued from previous page...

Atom-1	Atom-2	Interatomic distance (Å)	Clash overlap (Å)
1:A:342:TYR:OH	1:A:368:GLU:HA	2.14	0.47
1:A:313:GLU:CG	9:A:1031:HOH:O	2.63	0.46
2:D:169:ASN:OD1	2:D:235:SER:HA	2.15	0.46
2:B:327:LEU:HD21	2:B:390:ILE:HG21	1.97	0.46
1:C:482:HIS:CG	3:C:601:HCA:H52	2.51	0.46
1:A:202:ASN:OD1	1:A:202:ASN:C	2.54	0.46
1:C:385:LYS:HE3	1:C:385:LYS:HB2	1.81	0.46
1:A:144:THR:OG1	1:A:146:PRO:HD2	2.16	0.46
2:B:120:SER:HA	2:B:123:GLU:OE1	2.15	0.46
1:C:240:LEU:HA	1:C:241:THR:HA	1.69	0.46
2:D:178:PHE:CZ	7:D:502:PRO:HD2	2.51	0.45
1:A:201:GLY:CA	1:A:251:ASN:OD1	2.59	0.45
1:C:36[A]:GLU:HG2	9:C:1022:HOH:O	2.15	0.45
2:B:287:GLU:OE1	2:B:287:GLU:HA	2.16	0.45
1:C:203:LYS:O	1:C:254:LYS:CE	2.53	0.45
1:C:485:ASP:C	1:C:486:TYR:CG	2.90	0.45
1:A:413:LYS:O	1:A:416:GLU:HG2	2.16	0.45
2:B:15:LEU:O	5:B:501:XE:XE	3.13	0.45
2:B:262:LYS:HD2	9:B:998:HOH:O	2.17	0.45
1:A:316:ILE:O	1:A:320:ILE:HG13	2.16	0.45
1:A:240:LEU:HA	1:A:241:THR:HA	1.70	0.45
2:B:96:ASN:OD1	2:B:132:LYS:NZ	2.36	0.45
1:A:281:TRP:CE2	1:A:425:SER:HA	2.51	0.44
1:C:75:GLY:HA2	1:C:110:MET:SD	2.57	0.44
2:B:25:PRO:HB2	2:B:52:HIS:CE1	2.52	0.44
1:C:211:ASN:HB2	1:C:258:ASN:OD1	2.17	0.44
1:A:293:VAL:HG23	1:A:294:GLU:H	1.82	0.44
2:B:168:LYS:HA	2:B:168:LYS:HD3	1.77	0.44
2:D:103:HIS:ND1	9:D:908:HOH:O	1.90	0.44
1:C:331:LYS:NZ	9:C:708:HOH:O	2.50	0.44
1:A:312:THR:O	1:A:315:VAL:HG22	2.18	0.44
2:D:254:GLU:OE2	2:D:260:PRO:HA	2.18	0.44
2:D:13:LYS:NZ	2:D:13:LYS:HB3	2.33	0.44
1:C:482:HIS:ND1	3:C:601:HCA:H52	2.33	0.44
2:B:281:SER:O	2:B:285:GLY:N	2.51	0.44
2:B:75:ALA:C	2:B:77:VAL:N	2.70	0.44
1:A:470:VAL:HG21	2:B:65:MET:CE	2.48	0.44
1:A:345:GLY:HA2	1:A:367:PHE:CD1	2.53	0.43
2:D:163:GLU:HA	9:D:833:HOH:O	2.18	0.43
1:A:482:HIS:CG	3:A:601:HCA:H52	2.54	0.43
1:C:482:HIS:HB3	3:C:601:HCA:O5	2.17	0.43

Continued on next page...

Continued from previous page...

Atom-1	Atom-2	Interatomic distance (Å)	Clash overlap (Å)
1:C:394:PRO:HG2	9:C:1031:HOH:O	2.18	0.43
2:D:115:LEU:N	2:D:116:PRO:CD	2.81	0.43
1:A:289:VAL:HG13	1:A:290:ASP:N	2.33	0.43
1:A:210:ILE:HD11	1:A:229:LEU:HD13	2.01	0.43
2:B:75:ALA:O	2:B:77:VAL:N	2.52	0.43
1:C:337:LYS:HE2	1:C:507:ILE:HG21	1.99	0.43
1:A:340:CYS:HB2	1:A:461:PHE:CD2	2.54	0.42
2:B:75:ALA:O	2:B:79:GLY:N	2.51	0.42
1:C:465:ILE:HG21	2:D:54:THR:HG23	2.01	0.42
1:A:401:ASP:O	1:A:405:TYR:HB2	2.20	0.42
1:A:372:ARG:HB2	1:A:384:ILE:CD1	2.49	0.42
2:B:428:LYS:NZ	9:B:838:HOH:O	2.35	0.42
2:D:215:GLU:HG2	9:D:907:HOH:O	2.18	0.42
2:D:122:MET:HG3	2:D:127:SER:HB2	2.01	0.42
1:A:33:PRO:O	1:A:35:PRO:HD3	2.20	0.42
1:A:328:ASP:OD1	9:A:701:HOH:O	2.20	0.42
2:D:411:PHE:HA	2:D:412:PRO:HA	1.78	0.42
1:C:391:LYS:HA	9:C:724:HOH:O	2.20	0.42
2:B:390:ILE:HG12	2:B:407:VAL:HB	2.02	0.42
1:C:35:PRO:N	1:C:431:MET:HE1	2.34	0.42
1:A:124:LYS:HG3	9:A:973:HOH:O	2.20	0.42
2:B:115:LEU:O	2:B:119:ILE:HG13	2.19	0.42
2:D:122:MET:CG	2:D:127:SER:HB2	2.49	0.42
2:B:360:GLU:O	2:B:360:GLU:HG3	2.19	0.42
2:D:180:GLY:N	7:D:502:PRO:HA	2.35	0.42
1:C:20:THR:HB	9:C:1026:HOH:O	2.19	0.41
2:D:329:LYS:HE3	9:D:802:HOH:O	2.19	0.41
1:A:383:THR:HG21	9:A:916:HOH:O	2.19	0.41
2:D:359:ALA:HA	9:D:608:HOH:O	2.19	0.41
2:B:15:LEU:HD23	2:B:17:ILE:HD11	2.02	0.41
1:A:377:GLY:O	1:A:380:VAL:HG22	2.21	0.41
1:A:513:LYS:HD3	9:A:905:HOH:O	2.18	0.41
2:B:325:ILE:HA	2:B:354:ILE:HD11	2.02	0.41
1:C:305:ASP:OD1	1:C:305:ASP:C	2.59	0.41
1:A:479:LYS:HG3	5:A:604:XE:XE	2.99	0.41
2:D:263:THR:HG21	9:D:808:HOH:O	2.19	0.41
1:C:4:ASN:CA	9:C:997:HOH:O	2.57	0.41
1:A:87:ARG:NH1	1:A:216:TYR:CG	2.89	0.41
1:C:32:THR:HA	1:C:33:PRO:HD2	1.81	0.41
2:D:164:ASN:N	9:D:833:HOH:O	2.54	0.41
1:A:472:GLN:HG2	1:A:476:VAL:O	2.20	0.41

Continued on next page...

Continued from previous page...

Atom-1	Atom-2	Interatomic distance (Å)	Clash overlap (Å)
1:A:135:HIS:N	1:A:136:PRO:HD3	2.34	0.41
1:A:274:GLU:O	1:A:278:GLY:HA2	2.21	0.41
1:C:18:LYS:HD2	9:C:959:HOH:O	2.21	0.41
1:A:306:PRO:HD2	9:A:1021:HOH:O	2.21	0.41
1:A:158:ALA:C	9:A:839:HOH:O	2.60	0.41
1:A:282:ILE:HA	1:A:423:PRO:O	2.21	0.40
1:A:115:ILE:HG13	2:B:142:TYR:CD2	2.55	0.40
1:A:123:LEU:HD23	1:A:157:VAL:HG11	2.03	0.40
2:D:159:ASN:CG	9:D:916:HOH:O	2.52	0.40
2:B:159:ASN:CG	9:B:983:HOH:O	2.51	0.40
1:A:199:GLY:C	1:A:201:GLY:N	2.72	0.40
1:C:364:VAL:HG13	1:C:439:ILE:HG23	2.04	0.40
2:B:159:ASN:ND2	9:B:983:HOH:O	2.54	0.40
2:D:287:GLU:HA	2:D:287:GLU:OE2	2.22	0.40
1:C:67:LYS:HE3	9:C:775:HOH:O	2.21	0.40
2:B:278:MET:CE	1:C:519:TRP:HB3	2.52	0.40
1:C:84:TRP:CH2	2:D:18:ASN:HB3	2.57	0.40

All (3) symmetry-related close contacts are listed below. The label for Atom-2 includes the symmetry operator and encoded unit-cell translations to be applied.

Atom-1	Atom-2	Interatomic distance (Å)	Clash overlap (Å)
1:A:30:GLU:CG	1:A:117:PHE:CE1[1_455]	1.80	0.40
1:A:30:GLU:CG	1:A:117:PHE:CD2[1_455]	2.00	0.20
9:B:610:HOH:O	9:C:717:HOH:O[1_546]	2.19	0.01

5.3 Torsion angles [i](#)

5.3.1 Protein backbone [i](#)

In the following table, the Percentiles column shows the percent Ramachandran outliers of the chain as a percentile score with respect to all X-ray entries followed by that with respect to entries of similar resolution.

The Analysed column shows the number of residues for which the backbone conformation was analysed, and the total number of residues.

Mol	Chain	Analysed	Favoured	Allowed	Outliers	Percentiles
1	A	517/518 (100%)	478 (92%)	33 (6%)	6 (1%)	16 5

Continued on next page...

Continued from previous page...

Mol	Chain	Analysed	Favoured	Allowed	Outliers	Percentiles	
1	C	516/518 (100%)	493 (96%)	20 (4%)	3 (1%)	30	17
2	B	458/458 (100%)	445 (97%)	12 (3%)	1 (0%)	52	42
2	D	457/458 (100%)	445 (97%)	11 (2%)	1 (0%)	52	42
All	All	1948/1952 (100%)	1861 (96%)	76 (4%)	11 (1%)	30	17

All (11) Ramachandran outliers are listed below:

Mol	Chain	Res	Type
1	A	200	LYS
1	A	205	GLN
2	B	76	SER
1	C	344	GLY
1	A	463	ALA
1	C	463	ALA
2	D	168	LYS
1	A	304	ASP
1	A	343	VAL
1	C	48	ILE
1	A	48	ILE

5.3.2 Protein sidechains ⓘ

In the following table, the Percentiles column shows the percent sidechain outliers of the chain as a percentile score with respect to all X-ray entries followed by that with respect to entries of similar resolution.

The Analysed column shows the number of residues for which the sidechain conformation was analysed, and the total number of residues.

Mol	Chain	Analysed	Rotameric	Outliers	Percentiles	
1	A	436/435 (100%)	424 (97%)	12 (3%)	51	41
1	C	435/435 (100%)	430 (99%)	5 (1%)	80	79
2	B	386/384 (100%)	381 (99%)	5 (1%)	76	73
2	D	385/384 (100%)	378 (98%)	7 (2%)	66	61
All	All	1642/1638 (100%)	1613 (98%)	29 (2%)	66	61

All (29) residues with a non-rotameric sidechain are listed below:

Mol	Chain	Res	Type
1	A	4	ASN
1	A	11	GLU
1	A	30	GLU
1	A	32	THR
1	A	206	LYS
1	A	287	ILE
1	A	385	LYS
1	A	396	ILE
1	A	403	GLN
1	A	412	ASP
1	A	426	SER
1	A	513	LYS
2	B	72	THR
2	B	148	THR
2	B	307	GLN
2	B	360	GLU
2	B	432	ARG
1	C	32	THR
1	C	76	PRO
1	C	117	PHE
1	C	432	LYS
1	C	461	PHE
2	D	8	GLU
2	D	111	LEU
2	D	122	MET
2	D	307	GLN
2	D	349	LYS
2	D	352	LYS
2	D	360	GLU

Some sidechains can be flipped to improve hydrogen bonding and reduce clashes. All (3) such sidechains are listed below:

Mol	Chain	Res	Type
1	A	34	ASN
1	C	40	ASN
1	C	487	ASN

5.3.3 RNA ⓘ

There are no RNA molecules in this entry.

5.4 Non-standard residues in protein, DNA, RNA chains ⓘ

There are no non-standard protein/DNA/RNA residues in this entry.

5.5 Carbohydrates ⓘ

There are no carbohydrates in this entry.

5.6 Ligand geometry ⓘ

Of 16 ligands modelled in this entry, 8 are monoatomic - leaving 8 for Mogul analysis.

In the following table, the Counts columns list the number of bonds (or angles) for which Mogul statistics could be retrieved, the number of bonds (or angles) that are observed in the model and the number of bonds (or angles) that are defined in the chemical component dictionary. The Link column lists molecule types, if any, to which the group is linked. The Z score for a bond length (or angle) is the number of standard deviations the observed value is removed from the expected value. A bond length (or angle) with $|Z| > 2$ is considered an outlier worth inspection. RMSZ is the root-mean-square of all Z scores of the bond lengths (or angles).

Mol	Type	Chain	Res	Link	Bond lengths			Bond angles		
					Counts	RMSZ	$\# Z > 2$	Counts	RMSZ	$\# Z > 2$
3	HCA	A	601	-	4,13,13	0.41	0	3,18,18	1.52	0
4	ICS	A	602	1	6,30,30	1.49	2 (33%)	0,78,78	0.00	-
6	CLF	A	605	1,2	0,24,24	0.00	-	0,57,57	0.00	-
7	PRO	B	502	-	4,8,8	0.79	0	5,10,10	0.99	0
3	HCA	C	601	-	4,13,13	0.88	0	3,18,18	1.37	1 (33%)
4	ICS	C	602	1	6,30,30	1.35	1 (16%)	0,78,78	0.00	-
6	CLF	C	605	1,2	0,24,24	0.00	-	0,57,57	0.00	-
7	PRO	D	502	-	4,8,8	0.72	0	5,10,10	1.11	0

In the following table, the Chirals column lists the number of chiral outliers, the number of chiral centers analysed, the number of these observed in the model and the number defined in the chemical component dictionary. Similar counts are reported in the Torsion and Rings columns. '-' means no outliers of that kind were identified.

Mol	Type	Chain	Res	Link	Chirals	Torsions	Rings
3	HCA	A	601	-	-	0/7/17/17	0/0/0/0
4	ICS	A	602	1	-	0/0/204/204	0/0/13/13
6	CLF	A	605	1,2	-	0/0/132/132	0/12/10/10
7	PRO	B	502	-	-	0/0/11/11	0/1/1/1
3	HCA	C	601	-	-	0/7/17/17	0/0/0/0
4	ICS	C	602	1	-	0/0/204/204	0/0/13/13

Continued on next page...

Continued from previous page...

Mol	Type	Chain	Res	Link	Chirals	Torsions	Rings
6	CLF	C	605	1,2	-	0/0/132/132	0/12/10/10
7	PRO	D	502	-	-	0/0/11/11	0/1/1/1

All (3) bond length outliers are listed below:

Mol	Chain	Res	Type	Atoms	Z	Observed(Å)	Ideal(Å)
4	C	602	ICS	S2B-FE6	-2.60	2.18	2.24
4	A	602	ICS	S3A-FE4	-2.45	2.19	2.24
4	A	602	ICS	S2B-FE6	-2.36	2.19	2.24

All (1) bond angle outliers are listed below:

Mol	Chain	Res	Type	Atoms	Z	Observed(°)	Ideal(°)
3	C	601	HCA	C3-C2-C1	-2.20	111.44	114.96

There are no chirality outliers.

There are no torsion outliers.

There are no ring outliers.

7 monomers are involved in 16 short contacts:

Mol	Chain	Res	Type	Clashes	Symm-Clashes
3	A	601	HCA	2	0
6	A	605	CLF	2	0
7	B	502	PRO	2	0
3	C	601	HCA	3	0
4	C	602	ICS	2	0
6	C	605	CLF	1	0
7	D	502	PRO	4	0

5.7 Other polymers [i](#)

There are no such residues in this entry.

5.8 Polymer linkage issues [i](#)

There are no chain breaks in this entry.

6 Fit of model and data

6.1 Protein, DNA and RNA chains

In the following table, the column labelled ‘#RSRZ> 2’ contains the number (and percentage) of RSRZ outliers, followed by percent RSRZ outliers for the chain as percentile scores relative to all X-ray entries and entries of similar resolution. The OWAB column contains the minimum, median, 95th percentile and maximum values of the occupancy-weighted average B-factor per residue. The column labelled ‘Q< 0.9’ lists the number of (and percentage) of residues with an average occupancy less than 0.9.

Mol	Chain	Analysed	<RSRZ>	#RSRZ>2	OWAB(Å ²)	Q<0.9
1	A	517/518 (99%)	0.35	38 (7%) 17 19	16, 35, 69, 90	3 (0%)
1	C	517/518 (99%)	0.01	13 (2%) 61 64	16, 30, 55, 78	1 (0%)
2	B	458/458 (100%)	-0.17	3 (0%) 89 90	11, 22, 42, 59	1 (0%)
2	D	458/458 (100%)	-0.06	7 (1%) 76 79	12, 24, 44, 65	3 (0%)
All	All	1950/1952 (99%)	0.04	61 (3%) 52 56	11, 28, 55, 90	8 (0%)

All (61) RSRZ outliers are listed below:

Mol	Chain	Res	Type	RSRZ
1	A	34	ASN	4.4
1	A	33	PRO	4.1
1	A	409	ILE	4.0
1	A	306	PRO	3.7
1	C	415	GLU	3.5
1	A	29	THR	3.4
1	C	117	PHE	3.3
1	A	308	LEU	3.3
1	A	117	PHE	3.3
1	A	415	GLU	3.2
1	C	417	LEU	3.2
1	C	412	ASP	3.1
1	A	97	THR	3.1
1	C	420	ALA	3.1
1	A	407	VAL	3.0
1	A	413	LYS	3.0
1	C	116	VAL	2.9
1	A	207	LYS	2.9
1	A	61	VAL	2.9
1	A	310	LYS	2.9
1	C	419	LYS	2.9

Continued on next page...

Continued from previous page...

Mol	Chain	Res	Type	RSRZ
1	A	315	VAL	2.8
1	A	208	TYR	2.8
1	A	343	VAL	2.8
2	D	117	THR	2.7
1	C	31	GLU	2.7
1	A	403	GLN	2.7
1	A	31	GLU	2.7
1	A	406	ARG	2.7
1	A	204	GLU	2.7
1	A	412	ASP	2.7
1	A	32	THR	2.6
1	A	304	ASP	2.6
2	D	124	ASP	2.6
2	D	56	LEU	2.5
1	A	420	ALA	2.5
2	D	258	LYS	2.5
1	C	33	PRO	2.5
1	C	411	GLU	2.4
1	A	116	VAL	2.4
1	C	34	ASN	2.4
1	A	416	GLU	2.4
2	D	131	GLY	2.3
1	C	343	VAL	2.3
1	A	405	TYR	2.3
2	D	411	PHE	2.3
1	A	307	GLU	2.3
2	D	55	VAL	2.2
1	A	402	GLU	2.2
1	A	411	GLU	2.2
1	A	419	LYS	2.2
1	A	399	THR	2.2
2	B	78	PHE	2.1
1	A	35	PRO	2.1
1	C	416	GLU	2.1
1	A	4	ASN	2.1
2	B	55	VAL	2.1
1	A	410	PRO	2.1
2	B	166	GLY	2.1
1	A	421	GLY	2.0
1	A	401	ASP	2.0

6.2 Non-standard residues in protein, DNA, RNA chains [i](#)

There are no non-standard protein/DNA/RNA residues in this entry.

6.3 Carbohydrates [i](#)

There are no carbohydrates in this entry.

6.4 Ligands [i](#)

In the following table, the Atoms column lists the number of modelled atoms in the group and the number defined in the chemical component dictionary. LLDF column lists the quality of electron density of the group with respect to its neighbouring residues in protein, DNA or RNA chains. The B-factors column lists the minimum, median, 95th percentile and maximum values of B factors of atoms in the group. The column labelled 'Q< 0.9' lists the number of atoms with occupancy less than 0.9.

Mol	Type	Chain	Res	Atoms	RSCC	RSR	LLDF	B-factors(Å ²)	Q<0.9
7	PRO	B	502	8/8	0.94	0.22	3.55	16,18,21,26	0
7	PRO	D	502	8/8	0.93	0.21	2.38	18,23,27,27	0
3	HCA	A	601	14/14	0.96	0.18	0.83	17,20,37,42	0
3	HCA	C	601	14/14	0.97	0.13	-0.44	14,20,36,52	0
5	XE	C	603	1/1	0.99	0.08	-0.63	21,21,21,21	1
5	XE	D	501	1/1	0.94	0.06	-1.21	44,44,44,44	1
8	FE	B	503	1/1	0.98	0.07	-1.22	22,22,22,22	1
6	CLF	A	605	15/15	0.97	0.06	-1.78	20,24,29,48	0
8	FE	B	504	1/1	0.99	0.04	-1.91	17,17,17,17	1
6	CLF	C	605	15/15	0.97	0.05	-1.99	22,26,32,50	0
5	XE	C	604	1/1	0.98	0.04	-2.18	44,44,44,44	1
5	XE	A	604	1/1	0.99	0.07	-2.20	31,31,31,31	1
5	XE	A	603	1/1	0.87	0.07	-2.77	63,63,63,63	1
4	ICS	A	602	18/18	0.99	0.06	-3.41	21,24,28,28	0
4	ICS	C	602	18/18	0.99	0.06	-3.89	18,21,23,25	0
5	XE	B	501	1/1	0.97	0.05	-	38,38,38,38	1

6.5 Other polymers [i](#)

There are no such residues in this entry.