



Full wwPDB X-ray Structure Validation Report ⓘ

Feb 1, 2016 – 10:02 PM GMT

PDB ID : 4WO4
Title : The molecular bases of Delta/Alpha beta T cell-mediated antigen recognition.
Authors : Pellicci, D.G.; Uldrich, A.P.; Le Nours, J.; Ross, F.; Chabrol, E.; Eckle, S.B.G.; de Boer, R.; Lim, R.T.; McPherson, K.; Besra, G.; Howell, A.R.; Moretta, L.; McCluskey, J.; Heemskerk, M.H.M.; Gras, S.; Rossjohn, J.; Godfrey, D.I.
Deposited on : 2014-10-15
Resolution : 2.50 Å(reported)

This is a Full wwPDB X-ray Structure Validation Report for a publicly released PDB entry.
We welcome your comments at validation@mail.wwpdb.org
A user guide is available at
<http://wwpdb.org/validation/2016/XrayValidationReportHelp>
with specific help available everywhere you see the ⓘ symbol.

The following versions of software and data (see [references ⓘ](#)) were used in the production of this report:

MolProbity : 4.02b-467
Mogul : 1.7 (RC4), CSD as536be (2015)
Xtriage (Phenix) : 1.9-1692
EDS : rb-20026688
Percentile statistics : 20151230.v01 (using entries in the PDB archive December 30th 2015)
Refmac : 5.8.0135
CCP4 : 6.5.0
Ideal geometry (proteins) : Engh & Huber (2001)
Ideal geometry (DNA, RNA) : Parkinson et al. (1996)
Validation Pipeline (wwPDB-VP) : trunk26865

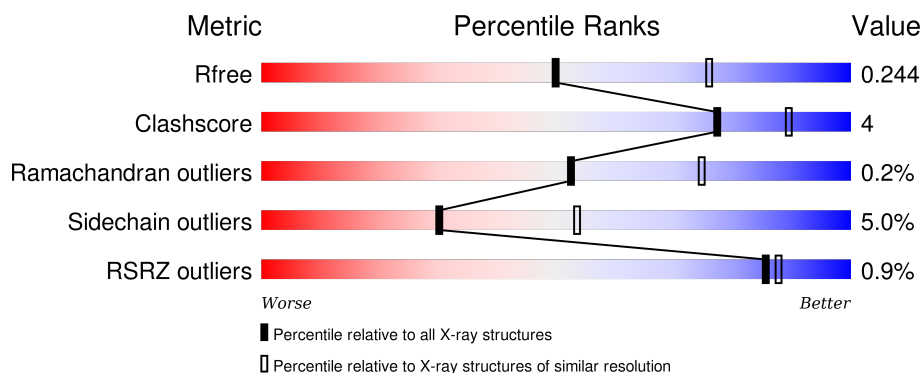
1 Overall quality at a glance

The following experimental techniques were used to determine the structure:

X-RAY DIFFRACTION

The reported resolution of this entry is 2.50 Å.

Percentile scores (ranging between 0-100) for global validation metrics of the entry are shown in the following graphic. The table shows the number of entries on which the scores are based.



Metric	Whole archive (#Entries)	Similar resolution (#Entries, resolution range(Å))
R_{free}	91344	3553 (2.50-2.50)
Clashscore	102246	4242 (2.50-2.50)
Ramachandran outliers	100387	4156 (2.50-2.50)
Sidechain outliers	100360	4158 (2.50-2.50)
RSRZ outliers	91569	3562 (2.50-2.50)

The table below summarises the geometric issues observed across the polymeric chains and their fit to the electron density. The red, orange, yellow and green segments on the lower bar indicate the fraction of residues that contain outliers for ≥ 3 , 2, 1 and 0 types of geometric quality criteria. A grey segment represents the fraction of residues that are not modelled. The numeric value for each fraction is indicated below the corresponding segment, with a dot representing fractions $\leq 5\%$. The upper red bar (where present) indicates the fraction of residues that have poor fit to the electron density. The numeric value is given above the bar.

Mol	Chain	Length	Quality of chain
1	A	274	<div> <div style="width: 100%; height: 10px; background: linear-gradient(to right, red 1%, orange 1%, yellow 12%, green 87%);"></div> <div style="display: flex; justify-content: space-between; width: 100%;"> 87% 12% </div> </div>
2	B	100	<div> <div style="width: 100%; height: 10px; background: linear-gradient(to right, red 3%, orange 1%, yellow 14%, green 83%, grey 2%);"></div> <div style="display: flex; justify-content: space-between; width: 100%;"> 83% 14% .. </div> </div>
3	C	207	<div> <div style="width: 100%; height: 10px; background: linear-gradient(to right, yellow 13%, green 84%, grey 3%);"></div> <div style="display: flex; justify-content: space-between; width: 100%;"> 84% 13% . </div> </div>
4	D	245	<div> <div style="width: 100%; height: 10px; background: linear-gradient(to right, yellow 10%, green 88%, grey 2%);"></div> <div style="display: flex; justify-content: space-between; width: 100%;"> 88% 10% .. </div> </div>

The following table lists non-polymeric compounds, carbohydrate monomers and non-standard

residues in protein, DNA, RNA chains that are outliers for geometric or electron-density-fit criteria:

Mol	Type	Chain	Res	Chirality	Geometry	Clashes	Electron density
7	FUC	A	309	-	-	-	X
8	JLS	A	310	-	-	-	X

2 Entry composition

There are 9 unique types of molecules in this entry. The entry contains 6806 atoms, of which 0 are hydrogens and 0 are deuteriums.

In the tables below, the ZeroOcc column contains the number of atoms modelled with zero occupancy, the AltConf column contains the number of residues with at least one atom in alternate conformation and the Trace column contains the number of residues modelled with at most 2 atoms.

- Molecule 1 is a protein called Antigen-presenting glycoprotein CD1d.

Mol	Chain	Residues	Atoms					ZeroOcc	AltConf	Trace
1	A	273	Total	C	N	O	S	0	0	0
			2170	1390	381	392	7			

There are 2 discrepancies between the modelled and reference sequences:

Chain	Residue	Modelled	Actual	Comment	Reference
A	278	PRO	-	expression tag	UNP P15813
A	279	ARG	-	expression tag	UNP P15813

- Molecule 2 is a protein called Beta-2-microglobulin.

Mol	Chain	Residues	Atoms					ZeroOcc	AltConf	Trace
2	B	98	Total	C	N	O	S	0	0	0
			797	508	136	151	2			

There is a discrepancy between the modelled and reference sequences:

Chain	Residue	Modelled	Actual	Comment	Reference
B	0	MET	-	initiating methionine	UNP P61769

- Molecule 3 is a protein called TCR variable DELTA 1 CHAIN and TCR constant Alpha.

Mol	Chain	Residues	Atoms					ZeroOcc	AltConf	Trace
3	C	200	Total	C	N	O	S	0	2	0
			1576	1000	259	307	10			

- Molecule 4 is a protein called TCR variable BETA 2 (TRVB20) chain and TCR constant BETA.

Mol	Chain	Residues	Atoms					ZeroOcc	AltConf	Trace
4	D	242	Total	C	N	O	S	0	3	0
			1885	1195	327	355	8			

- Molecule 5 is a polymer of unknown type called SUGAR (4-MER).

Mol	Chain	Residues	Atoms				ZeroOcc	AltConf
5	A	4	Total	C	N	O	0	0
			49	28	2	19		

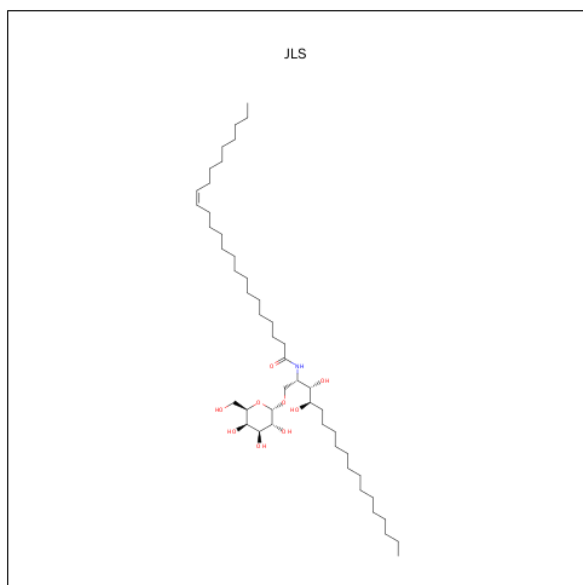
- Molecule 6 is a polymer of unknown type called SUGAR (2-MER).

Mol	Chain	Residues	Atoms				ZeroOcc	AltConf
6	A	2	Total	C	N	O	0	0
			28	16	2	10		

- Molecule 7 is a polymer of unknown type called SUGAR (3-MER).

Mol	Chain	Residues	Atoms				ZeroOcc	AltConf
7	A	3	Total	C	N	O	0	0
			38	22	2	14		

- Molecule 8 is (15Z)-N-[(2S,3S,4R)-1-(alpha-D-galactopyranosyloxy)-3,4-dihydroxyoctadecan-2-yl]tetracos-15-enamide (three-letter code: JLS) (formula: C₄₈H₉₃NO₉).



Mol	Chain	Residues	Atoms				ZeroOcc	AltConf
8	A	1	Total	C	N	O	0	0
			58	48	1	9		

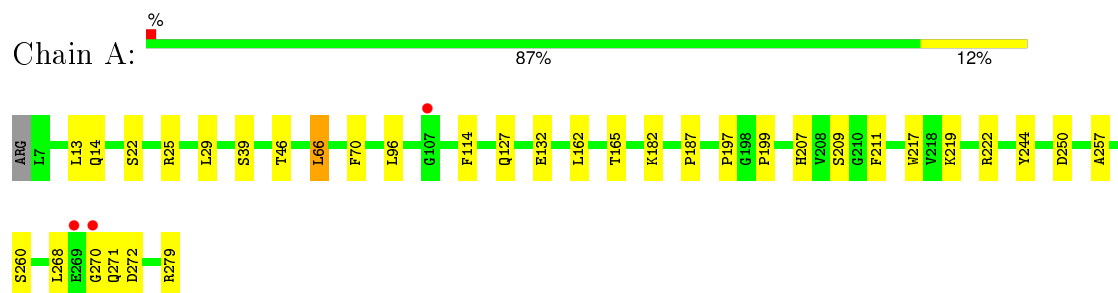
- Molecule 9 is water.

Mol	Chain	Residues	Atoms		ZeroOcc	AltConf
9	A	70	Total 70	O 70	0	0
9	B	15	Total 15	O 15	0	0
9	C	61	Total 61	O 61	0	0
9	D	59	Total 59	O 59	0	0

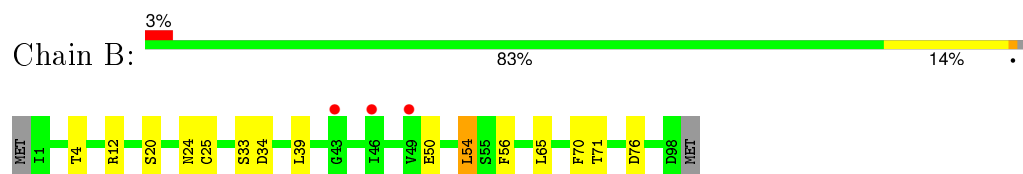
3 Residue-property plots [i](#)

These plots are drawn for all protein, RNA and DNA chains in the entry. The first graphic for a chain summarises the proportions of errors displayed in the second graphic. The second graphic shows the sequence view annotated by issues in geometry and electron density. Residues are color-coded according to the number of geometric quality criteria for which they contain at least one outlier: green = 0, yellow = 1, orange = 2 and red = 3 or more. A red dot above a residue indicates a poor fit to the electron density ($RSRZ > 2$). Stretches of 2 or more consecutive residues without any outlier are shown as a green connector. Residues present in the sample, but not in the model, are shown in grey.

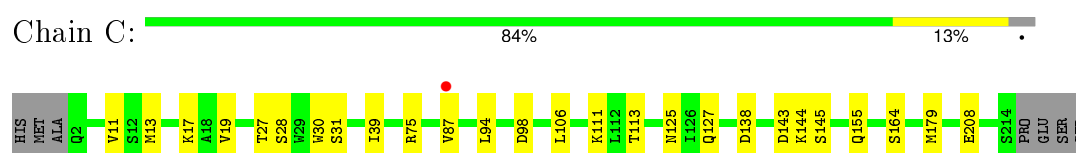
- Molecule 1: Antigen-presenting glycoprotein CD1d



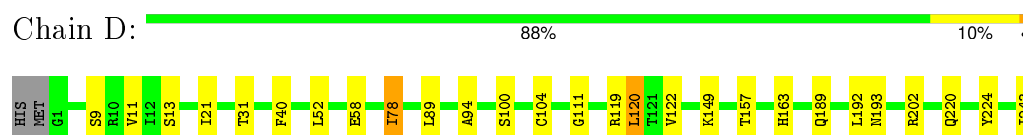
- Molecule 2: Beta-2-microglobulin



- Molecule 3: TCR variable DELTA 1 CHAIN and TCR constant Alpha



- Molecule 4: TCR variable BETA 2 (TRVB20) chain and TCR constant BETA



4 Data and refinement statistics

Property	Value	Source
Space group	P 21 21 21	Depositor
Cell constants a, b, c, α , β , γ	78.93Å 79.25Å 189.16Å 90.00° 90.00° 90.00°	Depositor
Resolution (Å)	36.60 – 2.50 72.84 – 2.50	Depositor EDS
% Data completeness (in resolution range)	99.8 (36.60-2.50) 99.8 (72.84-2.50)	Depositor EDS
R_{merge}	(Not available)	Depositor
R_{sym}	(Not available)	Depositor
$\langle I/\sigma(I) \rangle$ ¹	2.26 (at 2.51Å)	Xtriage
Refinement program	BUSTER 2.10.0	Depositor
R, R_{free}	0.194 , 0.237 0.203 , 0.244	Depositor DCC
R_{free} test set	2113 reflections (5.32%)	DCC
Wilson B-factor (Å ²)	36.7	Xtriage
Anisotropy	0.400	Xtriage
Bulk solvent k_{sol} (e/Å ³), B_{sol} (Å ²)	0.30 , 47.7	EDS
Estimated twinning fraction	0.019 for k,h,-l	Xtriage
L-test for twinning ²	$\langle L \rangle = 0.49$, $\langle L^2 \rangle = 0.33$	Xtriage
Outliers	0 of 41815 reflections	Xtriage
F_o, F_c correlation	0.93	EDS
Total number of atoms	6806	wwPDB-VP
Average B, all atoms (Å ²)	40.0	wwPDB-VP

Xtriage's analysis on translational NCS is as follows: *The largest off-origin peak in the Patterson function is 3.68% of the height of the origin peak. No significant pseudotranslation is detected.*

¹Intensities estimated from amplitudes.

²Theoretical values of $\langle |L| \rangle$, $\langle L^2 \rangle$ for acentric reflections are 0.5, 0.375 respectively for untwinned datasets, and 0.333, 0.2 for perfectly twinned datasets.

5 Model quality [i](#)

5.1 Standard geometry [i](#)

Bond lengths and bond angles in the following residue types are not validated in this section: BMA, NAG, JLS, FUC

The Z score for a bond length (or angle) is the number of standard deviations the observed value is removed from the expected value. A bond length (or angle) with $|Z| > 5$ is considered an outlier worth inspection. RMSZ is the root-mean-square of all Z scores of the bond lengths (or angles).

Mol	Chain	Bond lengths		Bond angles	
		RMSZ	$\# Z > 5$	RMSZ	$\# Z > 5$
1	A	0.51	0/2236	0.66	0/3047
2	B	0.48	0/820	0.69	0/1115
3	C	0.53	0/1614	0.74	0/2188
4	D	0.52	0/1944	0.67	0/2646
All	All	0.51	0/6614	0.69	0/8996

There are no bond length outliers.

There are no bond angle outliers.

There are no chirality outliers.

There are no planarity outliers.

5.2 Too-close contacts [i](#)

In the following table, the Non-H and H(model) columns list the number of non-hydrogen atoms and hydrogen atoms in the chain respectively. The H(added) column lists the number of hydrogen atoms added and optimized by MolProbity. The Clashes column lists the number of clashes within the asymmetric unit, whereas Symm-Clashes lists symmetry related clashes.

Mol	Chain	Non-H	H(model)	H(added)	Clashes	Symm-Clashes
1	A	2170	0	2093	16	1
2	B	797	0	740	5	0
3	C	1576	0	1527	16	1
4	D	1885	0	1821	14	0
5	A	49	0	43	0	0
6	A	28	0	25	0	0
7	A	38	0	34	1	0
8	A	58	0	93	3	0
9	A	70	0	0	0	0

Continued on next page...

Continued from previous page...

Mol	Chain	Non-H	H(model)	H(added)	Clashes	Symm-Clashes
9	B	15	0	0	0	0
9	C	61	0	0	0	0
9	D	59	0	0	0	0
All	All	6806	0	6376	48	1

The all-atom clashscore is defined as the number of clashes found per 1000 atoms (including hydrogen atoms). The all-atom clashscore for this structure is 4.

All (48) close contacts within the same asymmetric unit are listed below, sorted by their clash magnitude.

Atom-1	Atom-2	Interatomic distance (Å)	Clash overlap (Å)
1:A:270:GLY:O	1:A:271:GLN:OE1	1.85	0.94
3:C:13[B]:MET:HE2	3:C:94:LEU:HD12	1.62	0.82
3:C:39:ILE:HG21	3:C:87:VAL:HG11	1.71	0.71
3:C:13[B]:MET:CE	3:C:94:LEU:HD12	2.21	0.69
3:C:13[B]:MET:HE2	3:C:94:LEU:CD1	2.24	0.68
1:A:207:HIS:HD2	1:A:244:TYR:OH	1.77	0.67
3:C:27:THR:HB	3:C:106:LEU:HD21	1.75	0.67
3:C:39:ILE:HG21	3:C:87:VAL:HG21	1.76	0.67
4:D:11:VAL:HG13	4:D:120:LEU:HD23	1.79	0.64
1:A:70:PHE:HB2	8:A:310:JLS:H41	1.81	0.63
4:D:31:THR:HG22	4:D:31:THR:O	1.99	0.62
3:C:87:VAL:HG13	3:C:87:VAL:O	2.02	0.59
3:C:179:MET:HE1	4:D:149:LYS:HE3	1.85	0.59
1:A:197:PRO:HG2	1:A:250:ASP:OD1	2.03	0.58
1:A:187:PRO:HB3	1:A:211:PHE:HB3	1.86	0.58
1:A:268:LEU:CD1	1:A:272:ASP:HA	2.37	0.55
1:A:222:ARG:NH2	1:A:257:ALA:O	2.40	0.54
1:A:114:PHE:HB2	1:A:162:LEU:HD11	1.90	0.54
1:A:268:LEU:HD13	1:A:272:ASP:HA	1.90	0.54
4:D:21:ILE:HD12	4:D:89:LEU:HD23	1.90	0.53
4:D:78:ILE:HD13	4:D:89:LEU:HD12	1.90	0.53
2:B:20:SER:HA	2:B:71:THR:HG22	1.91	0.52
3:C:11:VAL:HG11	3:C:19:VAL:HG21	1.92	0.51
3:C:75:ARG:NH2	3:C:98:ASP:OD2	2.45	0.50
2:B:25:CYS:HB2	2:B:39:LEU:HD21	1.94	0.50
4:D:220:GLN:HG3	4:D:243:ILE:HG23	1.93	0.50
2:B:33:SER:HB2	2:B:54:LEU:HD11	1.94	0.49
1:A:270:GLY:O	1:A:271:GLN:CD	2.50	0.49
1:A:268:LEU:HD13	1:A:271:GLN:O	2.14	0.48
4:D:163:HIS:HB3	4:D:224:TYR:HB2	1.97	0.47

Continued on next page...

Continued from previous page...

Atom-1	Atom-2	Interatomic distance (Å)	Clash overlap (Å)
1:A:13:LEU:HG	2:B:56:PHE:CZ	2.50	0.47
3:C:144:LYS:HE2	4:D:157:THR:HG21	1.97	0.46
2:B:24:ASN:HB3	2:B:65:LEU:HD11	1.96	0.46
1:A:127:GLN:HB2	1:A:132:GLU:HG3	1.98	0.46
8:A:310:JLS:H14	8:A:310:JLS:H43	1.97	0.46
1:A:14:GLN:HB2	8:A:310:JLS:H21	1.98	0.45
1:A:66:LEU:HD11	1:A:165:THR:HG21	1.97	0.45
4:D:94:ALA:HB1	4:D:122:VAL:HG21	1.99	0.44
4:D:189:GLN:HB3	4:D:192:LEU:HD13	1.99	0.44
3:C:75:ARG:HH22	3:C:98:ASP:CG	2.22	0.43
3:C:111:LYS:HE2	4:D:52:LEU:HD21	2.01	0.42
3:C:11:VAL:HG11	3:C:19:VAL:CG2	2.50	0.41
3:C:13[B]:MET:HE1	3:C:17:LYS:HB3	2.01	0.41
4:D:31:THR:O	4:D:31:THR:CG2	2.66	0.41
4:D:40:PHE:O	4:D:104:CYS:HA	2.21	0.41
1:A:217:TRP:CZ2	1:A:219:LYS:HG3	2.55	0.41
7:A:309:FUC:H63	3:C:30:TRP:HE3	1.85	0.40
4:D:31:THR:HG23	4:D:58:GLU:HB3	2.04	0.40

All (1) symmetry-related close contacts are listed below. The label for Atom-2 includes the symmetry operator and encoded unit-cell translations to be applied.

Atom-1	Atom-2	Interatomic distance (Å)	Clash overlap (Å)
1:A:279:ARG:NH1	3:C:143:ASP:O[2_154]	2.08	0.12

5.3 Torsion angles [i](#)

5.3.1 Protein backbone [i](#)

In the following table, the Percentiles column shows the percent Ramachandran outliers of the chain as a percentile score with respect to all X-ray entries followed by that with respect to entries of similar resolution.

The Analysed column shows the number of residues for which the backbone conformation was analysed, and the total number of residues.

Mol	Chain	Analysed	Favoured	Allowed	Outliers	Percentiles	
1	A	271/274 (99%)	261 (96%)	9 (3%)	1 (0%)	39	61
2	B	96/100 (96%)	93 (97%)	3 (3%)	0	100	100

Continued on next page...

Continued from previous page...

Mol	Chain	Analysed	Favoured	Allowed	Outliers	Percentiles	
3	C	200/207 (97%)	194 (97%)	6 (3%)	0	100	100
4	D	243/245 (99%)	238 (98%)	4 (2%)	1 (0%)	39	61
All	All	810/826 (98%)	786 (97%)	22 (3%)	2 (0%)	52	75

All (2) Ramachandran outliers are listed below:

Mol	Chain	Res	Type
1	A	199	PRO
4	D	111	GLY

5.3.2 Protein sidechains ⓘ

In the following table, the Percentiles column shows the percent sidechain outliers of the chain as a percentile score with respect to all X-ray entries followed by that with respect to entries of similar resolution.

The Analysed column shows the number of residues for which the sidechain conformation was analysed, and the total number of residues.

Mol	Chain	Analysed	Rotameric	Outliers	Percentiles	
1	A	233/240 (97%)	223 (96%)	10 (4%)	35	61
2	B	87/95 (92%)	80 (92%)	7 (8%)	15	28
3	C	178/185 (96%)	167 (94%)	11 (6%)	23	41
4	D	206/212 (97%)	197 (96%)	9 (4%)	35	60
All	All	704/732 (96%)	667 (95%)	37 (5%)	30	50

All (37) residues with a non-rotameric sidechain are listed below:

Mol	Chain	Res	Type
1	A	22	SER
1	A	25	ARG
1	A	29	LEU
1	A	39	SER
1	A	46	THR
1	A	66	LEU
1	A	96	LEU
1	A	182	LYS
1	A	209	SER
1	A	260	SER

Continued on next page...

Continued from previous page...

Mol	Chain	Res	Type
2	B	4	THR
2	B	12	ARG
2	B	34	ASP
2	B	50	GLU
2	B	54	LEU
2	B	70	PHE
2	B	76	ASP
3	C	28	SER
3	C	31	SER
3	C	113	THR
3	C	125	ASN
3	C	127	GLN
3	C	138	ASP
3	C	145[A]	SER
3	C	145[B]	SER
3	C	155	GLN
3	C	164	SER
3	C	208	GLU
4	D	9	SER
4	D	13[A]	SER
4	D	13[B]	SER
4	D	78	ILE
4	D	100	SER
4	D	119	ARG
4	D	120	LEU
4	D	193	ASN
4	D	202	ARG

Some sidechains can be flipped to improve hydrogen bonding and reduce clashes. All (4) such sidechains are listed below:

Mol	Chain	Res	Type
1	A	159	GLN
1	A	207	HIS
2	B	42	ASN
3	C	203	ASN

5.3.3 RNA ⓘ

There are no RNA molecules in this entry.

5.4 Non-standard residues in protein, DNA, RNA chains ⓘ

There are no non-standard protein/DNA/RNA residues in this entry.

5.5 Carbohydrates ⓘ

9 carbohydrates are modelled in this entry.

In the following table, the Counts columns list the number of bonds (or angles) for which Mogul statistics could be retrieved, the number of bonds (or angles) that are observed in the model and the number of bonds (or angles) that are defined in the chemical component dictionary. The Link column lists molecule types, if any, to which the group is linked. The Z score for a bond length (or angle) is the number of standard deviations the observed value is removed from the expected value. A bond length (or angle) with $|Z| > 2$ is considered an outlier worth inspection. RMSZ is the root-mean-square of all Z scores of the bond lengths (or angles).

Mol	Type	Chain	Res	Link	Bond lengths			Bond angles		
					Counts	RMSZ	$\# Z > 2$	Counts	RMSZ	$\# Z > 2$
5	NAG	A	301	1,5	14,14,15	0.51	0	15,19,21	0.90	0
5	NAG	A	302	5	14,14,15	0.58	0	15,19,21	1.60	2 (13%)
5	BMA	A	303	5	11,11,12	0.60	0	14,15,17	1.00	0
5	FUC	A	304	5	10,10,11	0.92	0	14,14,16	1.83	4 (28%)
6	NAG	A	305	1,6	14,14,15	0.70	0	15,19,21	1.86	1 (6%)
6	NAG	A	306	6	14,14,15	0.74	0	15,19,21	1.34	1 (6%)
7	NAG	A	307	1,7	14,14,15	0.50	0	15,19,21	0.99	1 (6%)
7	NAG	A	308	7	14,14,15	0.49	0	15,19,21	1.02	1 (6%)
7	FUC	A	309	7	10,10,11	0.88	0	14,14,16	2.13	3 (21%)

In the following table, the Chirals column lists the number of chiral outliers, the number of chiral centers analysed, the number of these observed in the model and the number defined in the chemical component dictionary. Similar counts are reported in the Torsion and Rings columns. '-' means no outliers of that kind were identified.

Mol	Type	Chain	Res	Link	Chirals	Torsions	Rings
5	NAG	A	301	1,5	-	0/6/23/26	0/1/1/1
5	NAG	A	302	5	-	0/6/23/26	0/1/1/1
5	BMA	A	303	5	-	0/2/19/22	0/1/1/1
5	FUC	A	304	5	-	0/0/17/20	0/1/1/1
6	NAG	A	305	1,6	-	0/6/23/26	0/1/1/1
6	NAG	A	306	6	-	0/6/23/26	0/1/1/1
7	NAG	A	307	1,7	-	0/6/23/26	0/1/1/1
7	NAG	A	308	7	-	0/6/23/26	0/1/1/1
7	FUC	A	309	7	-	0/0/17/20	0/1/1/1

There are no bond length outliers.

All (13) bond angle outliers are listed below:

Mol	Chain	Res	Type	Atoms	Z	Observed(°)	Ideal(°)
7	A	307	NAG	C2-N2-C7	-2.02	120.44	123.04
7	A	308	NAG	C4-C3-C2	2.16	114.58	111.23
5	A	304	FUC	O5-C1-C2	2.63	115.12	110.86
5	A	304	FUC	O5-C5-C6	2.67	110.54	106.13
7	A	309	FUC	C2-C3-C4	3.06	116.24	111.04
5	A	304	FUC	C1-C2-C3	3.10	113.21	109.54
5	A	302	NAG	C3-C4-C5	3.24	115.84	110.20
5	A	304	FUC	C1-O5-C5	3.48	117.75	112.38
7	A	309	FUC	O5-C5-C6	3.71	112.26	106.13
6	A	306	NAG	C4-C3-C2	3.90	117.29	111.23
5	A	302	NAG	C4-C3-C2	4.46	118.16	111.23
7	A	309	FUC	C1-C2-C3	5.66	116.24	109.54
6	A	305	NAG	C1-O5-C5	5.74	119.54	112.25

There are no chirality outliers.

There are no torsion outliers.

There are no ring outliers.

1 monomer is involved in 1 short contact:

Mol	Chain	Res	Type	Clashes	Symm-Clashes
7	A	309	FUC	1	0

5.6 Ligand geometry

1 ligand is modelled in this entry.

In the following table, the Counts columns list the number of bonds (or angles) for which Mogul statistics could be retrieved, the number of bonds (or angles) that are observed in the model and the number of bonds (or angles) that are defined in the chemical component dictionary. The Link column lists molecule types, if any, to which the group is linked. The Z score for a bond length (or angle) is the number of standard deviations the observed value is removed from the expected value. A bond length (or angle) with $|Z| > 2$ is considered an outlier worth inspection. RMSZ is the root-mean-square of all Z scores of the bond lengths (or angles).

Mol	Type	Chain	Res	Link	Bond lengths			Bond angles		
					Counts	RMSZ	$\# Z > 2$	Counts	RMSZ	$\# Z > 2$
8	JLS	A	310	-	57,58,58	0.50	1 (1%)	63,67,67	1.11	4 (6%)

In the following table, the Chirals column lists the number of chiral outliers, the number of chiral

centers analysed, the number of these observed in the model and the number defined in the chemical component dictionary. Similar counts are reported in the Torsion and Rings columns. '-' means no outliers of that kind were identified.

Mol	Type	Chain	Res	Link	Chirals	Torsions	Rings
8	JLS	A	310	-	-	0/56/76/76	0/1/1/1

All (1) bond length outliers are listed below:

Mol	Chain	Res	Type	Atoms	Z	Observed(Å)	Ideal(Å)
8	A	310	JLS	O1A-C1A	2.25	1.44	1.40

All (4) bond angle outliers are listed below:

Mol	Chain	Res	Type	Atoms	Z	Observed(°)	Ideal(°)
8	A	310	JLS	C6-C5-C4	-3.44	108.04	114.20
8	A	310	JLS	O3-C3-C4	-2.09	103.50	108.75
8	A	310	JLS	O3A-C3A-C2A	2.19	115.26	110.34
8	A	310	JLS	O4-C4-C3	3.33	117.38	109.02

There are no chirality outliers.

There are no torsion outliers.

There are no ring outliers.

1 monomer is involved in 3 short contacts:

Mol	Chain	Res	Type	Clashes	Symm-Clashes
8	A	310	JLS	3	0

5.7 Other polymers [i](#)

There are no such residues in this entry.

5.8 Polymer linkage issues [i](#)

There are no chain breaks in this entry.

6 Fit of model and data ⓘ

6.1 Protein, DNA and RNA chains ⓘ

In the following table, the column labelled ‘#RSRZ> 2’ contains the number (and percentage) of RSRZ outliers, followed by percent RSRZ outliers for the chain as percentile scores relative to all X-ray entries and entries of similar resolution. The OWAB column contains the minimum, median, 95th percentile and maximum values of the occupancy-weighted average B-factor per residue. The column labelled ‘Q< 0.9’ lists the number of (and percentage) of residues with an average occupancy less than 0.9.

Mol	Chain	Analysed	<RSRZ>	#RSRZ>2	OWAB(Å ²)	Q<0.9
1	A	273/274 (99%)	0.06	3 (1%) 82 84	17, 38, 69, 89	0
2	B	98/100 (98%)	0.30	3 (3%) 52 57	19, 52, 80, 85	0
3	C	200/207 (96%)	-0.09	1 (0%) 91 92	18, 34, 60, 83	0
4	D	242/245 (98%)	-0.02	0 100 100	16, 36, 71, 93	0
All	All	813/826 (98%)	0.03	7 (0%) 85 88	16, 38, 71, 93	0

All (7) RSRZ outliers are listed below:

Mol	Chain	Res	Type	RSRZ
1	A	270	GLY	3.1
2	B	49	VAL	3.0
3	C	87	VAL	2.5
2	B	43	GLY	2.2
2	B	46	ILE	2.2
1	A	107	GLY	2.1
1	A	269	GLU	2.1

6.2 Non-standard residues in protein, DNA, RNA chains ⓘ

There are no non-standard protein/DNA/RNA residues in this entry.

6.3 Carbohydrates ⓘ

In the following table, the Atoms column lists the number of modelled atoms in the group and the number defined in the chemical component dictionary. LLDF column lists the quality of electron density of the group with respect to its neighbouring residues in protein, DNA or RNA chains. The B-factors column lists the minimum, median, 95th percentile and maximum values of B factors of atoms in the group. The column labelled ‘Q< 0.9’ lists the number of atoms with occupancy less than 0.9.

Mol	Type	Chain	Res	Atoms	RSCC	RSR	LLDF	B-factors(\AA^2)	Q<0.9
7	FUC	A	309	10/11	0.75	0.28	5.90	76,78,78,78	0
5	NAG	A	301	14/15	0.95	0.13	-1.31	21,43,55,63	0
5	FUC	A	304	10/11	0.71	0.39	-	63,66,67,67	0
5	BMA	A	303	11/12	0.65	0.28	-	91,93,93,93	0
7	NAG	A	307	14/15	0.91	0.16	-	60,65,72,72	0
7	NAG	A	308	14/15	0.89	0.18	-	73,77,80,80	0
6	NAG	A	306	14/15	0.70	0.21	-	80,84,89,89	0
6	NAG	A	305	14/15	0.92	0.20	-	41,47,61,71	0
5	NAG	A	302	14/15	0.86	0.26	-	72,78,86,88	0

6.4 Ligands [i](#)

In the following table, the Atoms column lists the number of modelled atoms in the group and the number defined in the chemical component dictionary. LLDF column lists the quality of electron density of the group with respect to its neighbouring residues in protein, DNA or RNA chains. The B-factors column lists the minimum, median, 95th percentile and maximum values of B factors of atoms in the group. The column labelled 'Q< 0.9' lists the number of atoms with occupancy less than 0.9.

Mol	Type	Chain	Res	Atoms	RSCC	RSR	LLDF	B-factors(\AA^2)	Q<0.9
8	JLS	A	310	58/58	0.92	0.22	2.61	20,32,40,41	0

6.5 Other polymers [i](#)

There are no such residues in this entry.