



# wwPDB X-ray Structure Validation Summary Report ⓘ

Feb 1, 2016 – 10:07 PM GMT

PDB ID : 4WTG  
Title : CRYSTAL STRUCTURE OF HCV NS5B GENOTYPE 2A JFH-1 ISOLATE WITH S15G E86Q E87Q C223H V321I MUTATIONS AND DELTA8 BETA HAIRPIN LOOP DELETION IN COMPLEX WITH SOFOSBUVIR DIPHOSPHATE GS-607596, MN<sup>2+</sup> AND SYMMETRICAL PRIMER TEMPLATE 5'-CAAAAUUU  
Authors : Edwards, T.E.; Appleby, T.C.  
Deposited on : 2014-10-30  
Resolution : 2.90 Å(reported)

This is a wwPDB X-ray Structure Validation Summary Report for a publicly released PDB entry.  
We welcome your comments at [validation@mail.wwpdb.org](mailto:validation@mail.wwpdb.org)  
A user guide is available at  
<http://wwpdb.org/validation/2016/XrayValidationReportHelp>  
with specific help available everywhere you see the ⓘ symbol.

---

The following versions of software and data (see [references ⓘ](#)) were used in the production of this report:

MolProbity : 4.02b-467  
Mogul : 1.7 (RC4), CSD as536be (2015)  
Xtriage (Phenix) : 1.9-1692  
EDS : rb-20026688  
Percentile statistics : 20151230.v01 (using entries in the PDB archive December 30th 2015)  
Refmac : 5.8.0135  
CCP4 : 6.5.0  
Ideal geometry (proteins) : Engh & Huber (2001)  
Ideal geometry (DNA, RNA) : Parkinson et al. (1996)  
Validation Pipeline (wwPDB-VP) : trunk26865

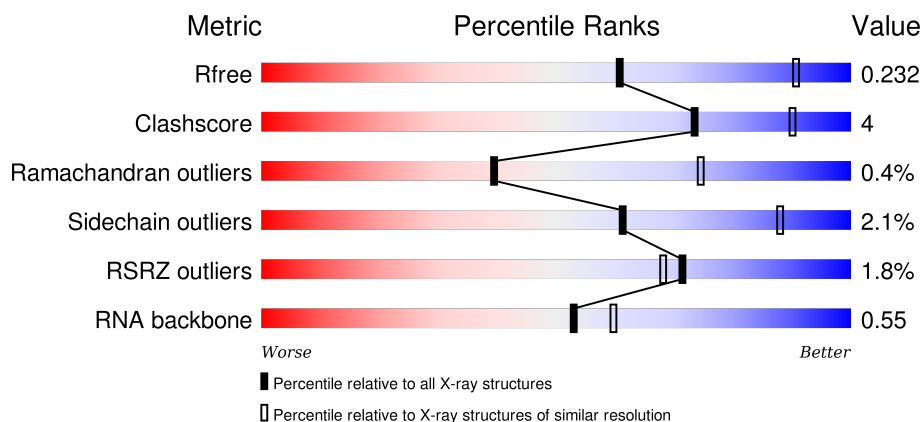
# 1 Overall quality at a glance

The following experimental techniques were used to determine the structure:

*X-RAY DIFFRACTION*

The reported resolution of this entry is 2.90 Å.

Percentile scores (ranging between 0-100) for global validation metrics of the entry are shown in the following graphic. The table shows the number of entries on which the scores are based.



Metric	Whole archive (#Entries)	Similar resolution (#Entries, resolution range(Å))
$R_{free}$	91344	1451 (2.90-2.90)
Clashscore	102246	1668 (2.90-2.90)
Ramachandran outliers	100387	1630 (2.90-2.90)
Sidechain outliers	100360	1632 (2.90-2.90)
RSRZ outliers	91569	1456 (2.90-2.90)
RNA backbone	2183	1093 (3.30-2.50)

The table below summarises the geometric issues observed across the polymeric chains and their fit to the electron density. The red, orange, yellow and green segments on the lower bar indicate the fraction of residues that contain outliers for  $\geq 3$ , 2, 1 and 0 types of geometric quality criteria. A grey segment represents the fraction of residues that are not modelled. The numeric value for each fraction is indicated below the corresponding segment, with a dot representing fractions  $\leq 5\%$ . The upper red bar (where present) indicates the fraction of residues that have poor fit to the electron density. The numeric value is given above the bar.

Mol	Chain	Length	Quality of chain
1	P	8	<div> <div>13%</div> <div> <div></div> <div>63%</div> <div>13%</div> <div>25%</div> </div> </div>
1	T	8	<div> <div>50%</div> <div>38%</div> <div>13%</div> </div>
2	A	572	<div> <div>2%</div> <div> <div></div> <div>83%</div> <div>10%</div> <div>6%</div> </div> </div>

## 2 Entry composition

There are 6 unique types of molecules in this entry. The entry contains 4416 atoms, of which 0 are hydrogens and 0 are deuteriums.

In the tables below, the ZeroOcc column contains the number of atoms modelled with zero occupancy, the AltConf column contains the number of residues with at least one atom in alternate conformation and the Trace column contains the number of residues modelled with at most 2 atoms.

- Molecule 1 is a RNA chain called RNA PRIMER TEMPLATE CAAAAUUU.

Mol	Chain	Residues	Atoms					ZeroOcc	AltConf	Trace
1	T	8	Total	C	N	O	P	0	0	1
			149	67	26	49	7			
1	P	6	Total	C	N	O	P	0	0	1
			105	47	16	37	5			

- Molecule 2 is a protein called RNA-directed RNA polymerase.

Mol	Chain	Residues	Atoms					ZeroOcc	AltConf	Trace
2	A	535	Total	C	N	O	S	0	0	0
			4073	2571	716	760	26			

There are 25 discrepancies between the modelled and reference sequences:

Chain	Residue	Modelled	Actual	Comment	Reference
A	-1	MET	-	expression tag	UNP Q99IB8
A	0	SER	-	expression tag	UNP Q99IB8
A	15	GLY	SER	engineered mutation	UNP Q99IB8
A	86	GLN	GLU	engineered mutation	UNP Q99IB8
A	87	GLN	GLU	engineered mutation	UNP Q99IB8
A	223	HIS	CYS	engineered mutation	UNP Q99IB8
A	321	ILE	VAL	engineered mutation	UNP Q99IB8
A	?	-	ASN	deletion	UNP Q99IB8
A	?	-	PHE	deletion	UNP Q99IB8
A	?	-	GLU	deletion	UNP Q99IB8
A	?	-	MET	deletion	UNP Q99IB8
A	?	-	TYR	deletion	UNP Q99IB8
A	?	-	GLY	deletion	UNP Q99IB8
A	?	-	SER	deletion	UNP Q99IB8
A	?	-	VAL	deletion	UNP Q99IB8
A	444	GLY	TYR	linker	UNP Q99IB8
A	445	GLY	SER	linker	UNP Q99IB8
A	571	LEU	-	expression tag	UNP Q99IB8

*Continued on next page...*

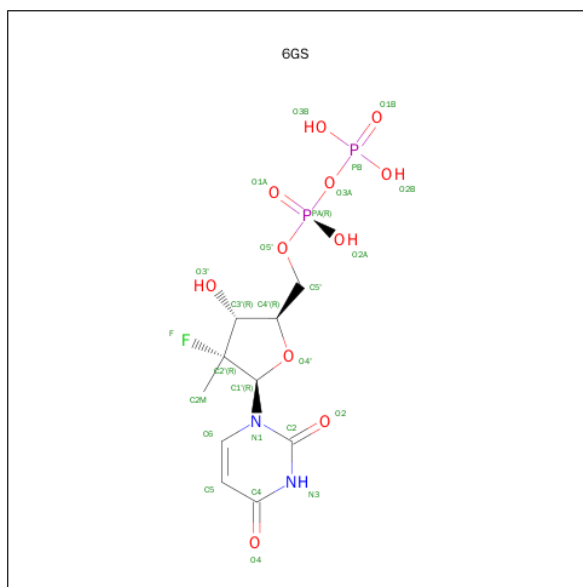
Continued from previous page...

Chain	Residue	Modelled	Actual	Comment	Reference
A	572	GLU	-	expression tag	UNP Q99IB8
A	573	HIS	-	expression tag	UNP Q99IB8
A	574	HIS	-	expression tag	UNP Q99IB8
A	575	HIS	-	expression tag	UNP Q99IB8
A	576	HIS	-	expression tag	UNP Q99IB8
A	577	HIS	-	expression tag	UNP Q99IB8
A	578	HIS	-	expression tag	UNP Q99IB8

- Molecule 3 is MANGANESE (II) ION (three-letter code: MN) (formula: Mn).

Mol	Chain	Residues	Atoms		ZeroOcc	AltConf
3	P	1	Total	Mn	0	0
			1	1		
3	A	2	Total	Mn	0	0
			2	2		

- Molecule 4 is 2'-deoxy-2'-fluoro-2'-methyluridine 5'-(trihydrogen diphosphate) (three-letter code: 6GS) (formula: C<sub>10</sub>H<sub>15</sub>FN<sub>2</sub>O<sub>11</sub>P<sub>2</sub>).



Mol	Chain	Residues	Atoms						ZeroOcc	AltConf
4	P	1	Total	C	F	N	O	P	0	0
			26	10	1	2	11	2		

- Molecule 5 is CHLORIDE ION (three-letter code: CL) (formula: Cl).

Mol	Chain	Residues	Atoms		ZeroOcc	AltConf
5	A	1	Total	Cl	0	0
			1	1		

- Molecule 6 is water.

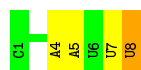
Mol	Chain	Residues	Atoms		ZeroOcc	AltConf
6	T	1	Total	O	0	0
			1	1		
6	P	2	Total	O	0	0
			2	2		
6	A	56	Total	O	0	0
			56	56		

### 3 Residue-property plots [i](#)

These plots are drawn for all protein, RNA and DNA chains in the entry. The first graphic for a chain summarises the proportions of errors displayed in the second graphic. The second graphic shows the sequence view annotated by issues in geometry and electron density. Residues are color-coded according to the number of geometric quality criteria for which they contain at least one outlier: green = 0, yellow = 1, orange = 2 and red = 3 or more. A red dot above a residue indicates a poor fit to the electron density ( $\text{RSRZ} > 2$ ). Stretches of 2 or more consecutive residues without any outlier are shown as a green connector. Residues present in the sample, but not in the model, are shown in grey.

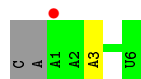
- Molecule 1: RNA PRIMER TEMPLATE CAAAAUUU

Chain T: 




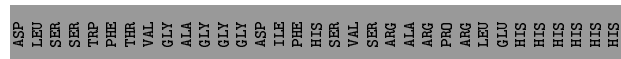
- Molecule 1: RNA PRIMER TEMPLATE CAAAAUUU

Chain P: 



- Molecule 2: RNA-directed RNA polymerase

Chain A: 



## 4 Data and refinement statistics

Property	Value	Source
Space group	P 65	Depositor
Cell constants a, b, c, $\alpha$ , $\beta$ , $\gamma$	140.44Å 140.44Å 91.62Å 90.00° 90.00° 120.00°	Depositor
Resolution (Å)	50.00 – 2.90 45.97 – 2.90	Depositor EDS
% Data completeness (in resolution range)	98.5 (50.00-2.90) 98.6 (45.97-2.90)	Depositor EDS
$R_{merge}$	0.09	Depositor
$R_{sym}$	(Not available)	Depositor
$\langle I/\sigma(I) \rangle$ <sup>1</sup>	3.57 (at 2.91Å)	Xtriage
Refinement program	REFMAC	Depositor
R, $R_{free}$	0.179 , 0.232 0.187 , 0.232	Depositor DCC
$R_{free}$ test set	1074 reflections (4.99%)	DCC
Wilson B-factor (Å <sup>2</sup> )	63.4	Xtriage
Anisotropy	0.018	Xtriage
Bulk solvent $k_{sol}$ (e/Å <sup>3</sup> ), $B_{sol}$ (Å <sup>2</sup> )	0.33 , 41.3	EDS
Estimated twinning fraction	0.035 for h,-h-k,-l	Xtriage
L-test for twinning <sup>2</sup>	$\langle  L  \rangle = 0.48$ , $\langle L^2 \rangle = 0.31$	Xtriage
Outliers	0 of 22607 reflections	Xtriage
$F_o, F_c$ correlation	0.95	EDS
Total number of atoms	4416	wwPDB-VP
Average B, all atoms (Å <sup>2</sup> )	58.0	wwPDB-VP

Xtriage's analysis on translational NCS is as follows: *The largest off-origin peak in the Patterson function is 3.61% of the height of the origin peak. No significant pseudotranslation is detected.*

<sup>1</sup>Intensities estimated from amplitudes.

<sup>2</sup>Theoretical values of  $\langle |L| \rangle$ ,  $\langle L^2 \rangle$  for acentric reflections are 0.5, 0.375 respectively for untwinned datasets, and 0.333, 0.2 for perfectly twinned datasets.

## 5 Model quality [i](#)

### 5.1 Standard geometry [i](#)

Bond lengths and bond angles in the following residue types are not validated in this section: CL, MN, 6GS

The Z score for a bond length (or angle) is the number of standard deviations the observed value is removed from the expected value. A bond length (or angle) with  $|Z| > 5$  is considered an outlier worth inspection. RMSZ is the root-mean-square of all Z scores of the bond lengths (or angles).

Mol	Chain	Bond lengths		Bond angles	
		RMSZ	$\# Z  > 5$	RMSZ	$\# Z  > 5$
1	P	0.33	0/116	0.72	0/179
1	T	0.43	0/166	0.77	0/257
2	A	0.54	0/4168	0.74	1/5684 (0.0%)
All	All	0.53	0/4450	0.74	1/6120 (0.0%)

There are no bond length outliers.

All (1) bond angle outliers are listed below:

Mol	Chain	Res	Type	Atoms	Z	Observed(°)	Ideal(°)
2	A	277	ARG	NE-CZ-NH2	-6.17	117.22	120.30

There are no chirality outliers.

There are no planarity outliers.

### 5.2 Too-close contacts [i](#)

In the following table, the Non-H and H(model) columns list the number of non-hydrogen atoms and hydrogen atoms in the chain respectively. The H(added) column lists the number of hydrogen atoms added and optimized by MolProbity. The Clashes column lists the number of clashes within the asymmetric unit, whereas Symm-Clashes lists symmetry related clashes.

Mol	Chain	Non-H	H(model)	H(added)	Clashes	Symm-Clashes
1	P	105	0	52	2	0
1	T	149	0	75	4	0
2	A	4073	0	3994	32	0
3	A	2	0	0	0	0
3	P	1	0	0	0	0
4	P	26	0	12	0	0
5	A	1	0	0	0	0

*Continued on next page...*



*Continued from previous page...*

Mol	Chain	Non-H	H(model)	H(added)	Clashes	Symm-Clashes
6	A	56	0	0	0	0
6	P	2	0	0	0	0
6	T	1	0	0	0	0
All	All	4416	0	4133	35	0

The all-atom clashscore is defined as the number of clashes found per 1000 atoms (including hydrogen atoms). The all-atom clashscore for this structure is 4.

The worst 5 of 35 close contacts within the same asymmetric unit are listed below, sorted by their clash magnitude.

Atom-1	Atom-2	Interatomic distance (Å)	Clash overlap (Å)
2:A:458:ASP:HB2	2:A:462:ILE:HD11	1.78	0.64
2:A:458:ASP:CB	2:A:462:ILE:HD11	2.30	0.61
2:A:459:LEU:HA	2:A:462:ILE:HD12	1.84	0.59
1:T:7:U:H2'	1:T:8:U:H5'	1.84	0.58
2:A:85:LEU:C	2:A:85:LEU:HD23	2.26	0.56

There are no symmetry-related clashes.

## 5.3 Torsion angles [i](#)

### 5.3.1 Protein backbone [i](#)

In the following table, the Percentiles column shows the percent Ramachandran outliers of the chain as a percentile score with respect to all X-ray entries followed by that with respect to entries of similar resolution.

The Analysed column shows the number of residues for which the backbone conformation was analysed, and the total number of residues.

Mol	Chain	Analysed	Favoured	Allowed	Outliers	Percentiles
2	A	533/572 (93%)	505 (95%)	26 (5%)	2 (0%)	39 74

All (2) Ramachandran outliers are listed below:

Mol	Chain	Res	Type
2	A	130	PRO
2	A	540	PRO

### 5.3.2 Protein sidechains ⓘ

In the following table, the Percentiles column shows the percent sidechain outliers of the chain as a percentile score with respect to all X-ray entries followed by that with respect to entries of similar resolution.

The Analysed column shows the number of residues for which the sidechain conformation was analysed, and the total number of residues.

Mol	Chain	Analysed	Rotameric	Outliers	Percentiles
2	A	430/485 (89%)	421 (98%)	9 (2%)	61 88

5 of 9 residues with a non-rotameric sidechain are listed below:

Mol	Chain	Res	Type
2	A	314	LEU
2	A	483	THR
2	A	320	LEU
2	A	56	ARG
2	A	318	ASP

Some sidechains can be flipped to improve hydrogen bonding and reduce clashes. There are no such sidechains identified.

### 5.3.3 RNA ⓘ

Mol	Chain	Analysed	Backbone Outliers	Pucker Outliers
1	P	4/8 (50%)	0	0
1	T	6/8 (75%)	1 (16%)	0
All	All	10/16 (62%)	1 (10%)	0

All (1) RNA backbone outliers are listed below:

Mol	Chain	Res	Type
1	T	8	U

There are no RNA pucker outliers to report.

## 5.4 Non-standard residues in protein, DNA, RNA chains ⓘ

There are no non-standard protein/DNA/RNA residues in this entry.

## 5.5 Carbohydrates [i](#)

There are no carbohydrates in this entry.

## 5.6 Ligand geometry [i](#)

Of 5 ligands modelled in this entry, 4 are monoatomic - leaving 1 for Mogul analysis.

In the following table, the Counts columns list the number of bonds (or angles) for which Mogul statistics could be retrieved, the number of bonds (or angles) that are observed in the model and the number of bonds (or angles) that are defined in the chemical component dictionary. The Link column lists molecule types, if any, to which the group is linked. The Z score for a bond length (or angle) is the number of standard deviations the observed value is removed from the expected value. A bond length (or angle) with  $|Z| > 2$  is considered an outlier worth inspection. RMSZ is the root-mean-square of all Z scores of the bond lengths (or angles).

Mol	Type	Chain	Res	Link	Bond lengths			Bond angles		
					Counts	RMSZ	# $ Z  > 2$	Counts	RMSZ	# $ Z  > 2$
4	6GS	P	602	3	18,27,27	1.37	2 (11%)	21,43,43	1.75	3 (14%)

In the following table, the Chirals column lists the number of chiral outliers, the number of chiral centers analysed, the number of these observed in the model and the number defined in the chemical component dictionary. Similar counts are reported in the Torsion and Rings columns. '-' means no outliers of that kind were identified.

Mol	Type	Chain	Res	Link	Chirals	Torsions	Rings
4	6GS	P	602	3	-	0/12/36/36	0/2/2/2

All (2) bond length outliers are listed below:

Mol	Chain	Res	Type	Atoms	Z	Observed(Å)	Ideal(Å)
4	P	602	6GS	F-C2'	-2.36	1.33	1.39
4	P	602	6GS	O4-C4	4.56	1.35	1.24

All (3) bond angle outliers are listed below:

Mol	Chain	Res	Type	Atoms	Z	Observed(°)	Ideal(°)
4	P	602	6GS	O5'-PA-O1A	-3.04	97.80	109.62
4	P	602	6GS	O2B-PB-O1B	2.24	117.80	110.58
4	P	602	6GS	C4-N3-C2	5.85	119.93	114.14

There are no chirality outliers.

There are no torsion outliers.

There are no ring outliers.

No monomer is involved in short contacts.

## 5.7 Other polymers

There are no such residues in this entry.

## 5.8 Polymer linkage issues

There are no chain breaks in this entry.

## 6 Fit of model and data [i](#)

### 6.1 Protein, DNA and RNA chains [i](#)

In the following table, the column labelled ‘#RSRZ> 2’ contains the number (and percentage) of RSRZ outliers, followed by percent RSRZ outliers for the chain as percentile scores relative to all X-ray entries and entries of similar resolution. The OWAB column contains the minimum, median, 95<sup>th</sup> percentile and maximum values of the occupancy-weighted average B-factor per residue. The column labelled ‘Q< 0.9’ lists the number of (and percentage) of residues with an average occupancy less than 0.9.

Mol	Chain	Analysed	<RSRZ>	#RSRZ>2	OWAB(Å <sup>2</sup> )	Q<0.9
1	P	6/8 (75%)	1.05	1 (16%) <b>2</b> <b>1</b>	75, 80, 95, 116	0
1	T	8/8 (100%)	-0.14	0 <b>100</b> <b>100</b>	66, 73, 93, 118	0
2	A	535/572 (93%)	-0.17	9 (1%) 73 70	37, 55, 82, 111	0
All	All	549/588 (93%)	-0.16	10 (1%) 71 68	37, 55, 85, 118	0

The worst 5 of 10 RSRZ outliers are listed below:

Mol	Chain	Res	Type	RSRZ
1	P	1	A	7.4
2	A	536	LEU	4.2
2	A	535	LYS	4.2
2	A	537	THR	3.9
2	A	534	LEU	2.9

### 6.2 Non-standard residues in protein, DNA, RNA chains [i](#)

There are no non-standard protein/DNA/RNA residues in this entry.

### 6.3 Carbohydrates [i](#)

There are no carbohydrates in this entry.

### 6.4 Ligands [i](#)

In the following table, the Atoms column lists the number of modelled atoms in the group and the number defined in the chemical component dictionary. LLDF column lists the quality of electron density of the group with respect to its neighbouring residues in protein, DNA or RNA chains. The B-factors column lists the minimum, median, 95<sup>th</sup> percentile and maximum values of B factors

of atoms in the group. The column labelled 'Q< 0.9' lists the number of atoms with occupancy less than 0.9.

Mol	Type	Chain	Res	Atoms	RSCC	RSR	LLDF	B-factors( $\text{\AA}^2$ )	Q<0.9
4	6GS	P	602	26/26	0.98	0.18	0.06	48,73,79,88	0
5	CL	A	603	1/1	0.94	0.19	-1.12	69,69,69,69	0
3	MN	A	601	1/1	1.00	0.12	-1.29	49,49,49,49	0
3	MN	A	602	1/1	0.98	0.04	-	82,82,82,82	0
3	MN	P	601	1/1	0.99	0.13	-	49,49,49,49	0

## 6.5 Other polymers [i](#)

There are no such residues in this entry.