



Full wwPDB X-ray Structure Validation Report ⓘ

Feb 1, 2016 – 06:23 AM GMT

PDB ID : 2WVG
Title : STRUCTURAL INSIGHTS INTO THE PRE-REACTION STATE OF
PYRUVATE DECARBOXYLASE FROM ZYMOMONAS MOBILIS
Authors : Pei, X.Y.; Erixon, K.; Luisi, B.F.; Leeper, F.J.
Deposited on : 2009-10-16
Resolution : 1.75 Å(reported)

This is a Full wwPDB X-ray Structure Validation Report for a publicly released PDB entry.
We welcome your comments at validation@mail.wwpdb.org
A user guide is available at
<http://wwpdb.org/validation/2016/XrayValidationReportHelp>
with specific help available everywhere you see the ⓘ symbol.

The following versions of software and data (see [references ⓘ](#)) were used in the production of this report:

MolProbity : 4.02b-467
Mogul : 1.7 (RC4), CSD as536be (2015)
Xtriage (Phenix) : 1.9-1692
EDS : rb-20026688
Percentile statistics : 20151230.v01 (using entries in the PDB archive December 30th 2015)
Refmac : 5.8.0135
CCP4 : 6.5.0
Ideal geometry (proteins) : Engh & Huber (2001)
Ideal geometry (DNA, RNA) : Parkinson et al. (1996)
Validation Pipeline (wwPDB-VP) : trunk26865

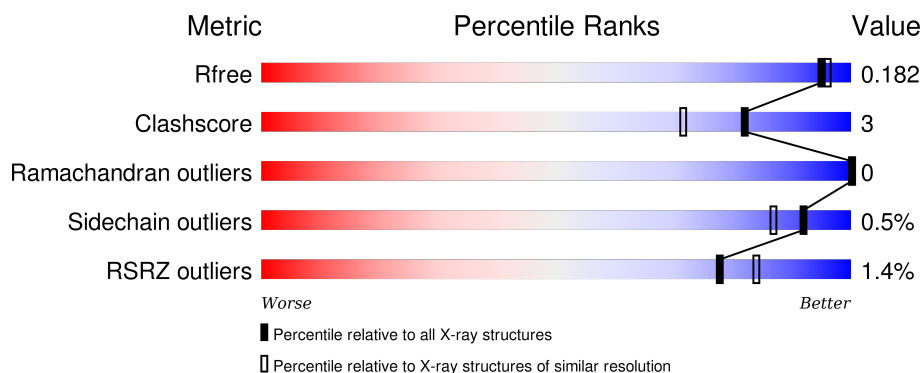
1 Overall quality at a glance

The following experimental techniques were used to determine the structure:

X-RAY DIFFRACTION

The reported resolution of this entry is 1.75 Å.

Percentile scores (ranging between 0-100) for global validation metrics of the entry are shown in the following graphic. The table shows the number of entries on which the scores are based.



Metric	Whole archive (#Entries)	Similar resolution (#Entries, resolution range(Å))
R_{free}	91344	1609 (1.76-1.76)
Clashscore	102246	1730 (1.76-1.76)
Ramachandran outliers	100387	1711 (1.76-1.76)
Sidechain outliers	100360	1711 (1.76-1.76)
RSRZ outliers	91569	1610 (1.76-1.76)

The table below summarises the geometric issues observed across the polymeric chains and their fit to the electron density. The red, orange, yellow and green segments on the lower bar indicate the fraction of residues that contain outliers for ≥ 3 , 2, 1 and 0 types of geometric quality criteria. A grey segment represents the fraction of residues that are not modelled. The numeric value for each fraction is indicated below the corresponding segment, with a dot representing fractions $\leq 5\%$. The upper red bar (where present) indicates the fraction of residues that have poor fit to the electron density. The numeric value is given above the bar.

Mol	Chain	Length	Quality of chain
1	A	568	<div> <div>2%</div> <div>90%</div> <div>10%</div> <div>.</div> </div>
1	B	568	<div> <div>2%</div> <div>91%</div> <div>8%</div> <div>.</div> </div>
1	E	568	<div> <div>92%</div> <div>7%</div> <div>.</div> </div>
1	F	568	<div> <div>%</div> <div>92%</div> <div>7%</div> <div>.</div> </div>

The following table lists non-polymeric compounds, carbohydrate monomers and non-standard

residues in protein, DNA, RNA chains that are outliers for geometric or electron-density-fit criteria:

Mol	Type	Chain	Res	Chirality	Geometry	Clashes	Electron density
2	F	A	569	-	-	-	X
2	F	E	569	-	-	-	X
2	F	F	570	-	-	-	X
4	MG	B	601	-	-	-	X

2 Entry composition

There are 5 unique types of molecules in this entry. The entry contains 19553 atoms, of which 0 are hydrogens and 0 are deuteriums.

In the tables below, the ZeroOcc column contains the number of atoms modelled with zero occupancy, the AltConf column contains the number of residues with at least one atom in alternate conformation and the Trace column contains the number of residues modelled with at most 2 atoms.

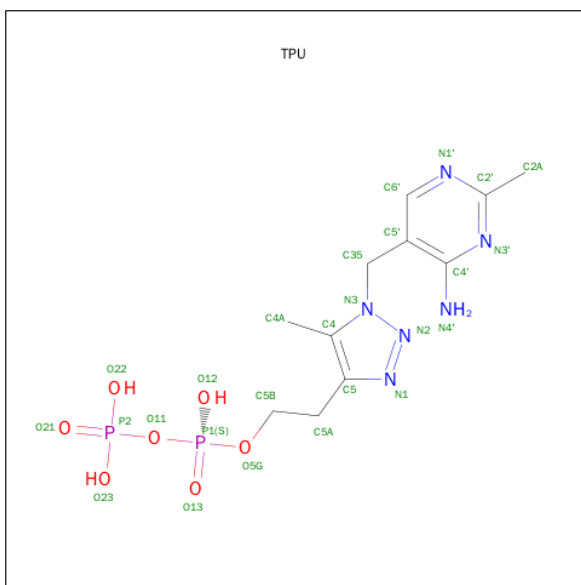
- Molecule 1 is a protein called PYRUVATE DECARBOXYLASE.

Mol	Chain	Residues	Atoms					ZeroOcc	AltConf	Trace
1	A	565	Total	C	N	O	S	0	3	0
			4277	2723	727	809	18			
1	B	565	Total	C	N	O	S	0	1	0
			4269	2716	727	808	18			
1	E	565	Total	C	N	O	S	0	1	0
			4269	2716	727	808	18			
1	F	565	Total	C	N	O	S	0	1	0
			4269	2716	727	808	18			

- Molecule 2 is FLUORIDE ION (three-letter code: F) (formula: F).

Mol	Chain	Residues	Atoms		ZeroOcc	AltConf
2	B	1	Total	F	0	0
			1	1		
2	A	1	Total	F	0	0
			1	1		
2	F	1	Total	F	0	0
			1	1		
2	E	1	Total	F	0	0
			1	1		

- Molecule 3 is 2-{1-[(4-AMINO-2-METHYLPYRIMIDIN-5-YL)METHYL]-5-METHYL-1H-1,2,3-TRIAZOL-4-YL}ETHYL TRIHYDROGEN DIPHOSPHATE (three-letter code: TPU) (formula: C₁₁H₁₈N₆O₇P₂).



Mol	Chain	Residues	Atoms					ZeroOcc	AltConf
3	A	1	Total 26	C 11	N 6	O 7	P 2	0	0
3	B	1	Total 26	C 11	N 6	O 7	P 2	0	0
3	E	1	Total 26	C 11	N 6	O 7	P 2	0	0
3	F	1	Total 26	C 11	N 6	O 7	P 2	0	0

- Molecule 4 is MAGNESIUM ION (three-letter code: MG) (formula: Mg).

Mol	Chain	Residues	Atoms	ZeroOcc	AltConf
4	B	1	Total Mg 1 1	0	0
4	A	1	Total Mg 1 1	0	0
4	F	1	Total Mg 1 1	0	0
4	E	1	Total Mg 1 1	0	0

- Molecule 5 is water.

Mol	Chain	Residues	Atoms	ZeroOcc	AltConf
5	A	573	Total O 573 573	0	0

Continued on next page...

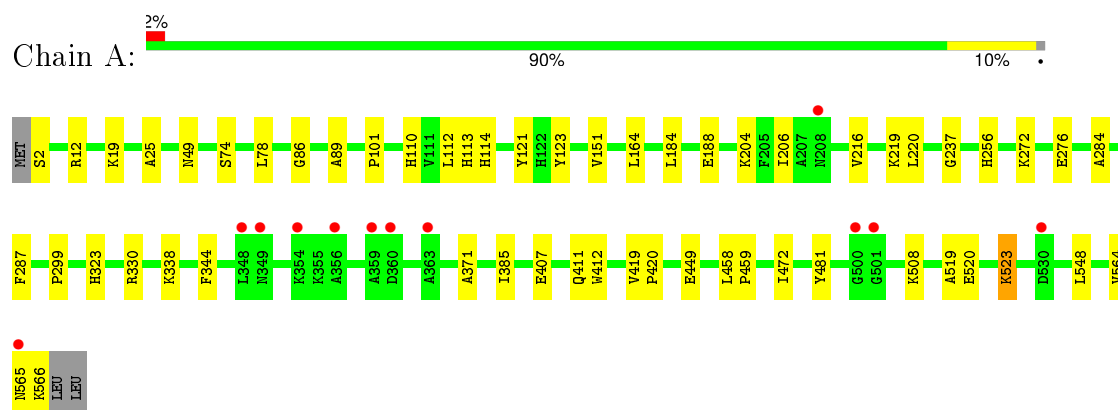
Continued from previous page...

Mol	Chain	Residues	Atoms		ZeroOcc	AltConf
5	B	549	Total 549	O 549	0	0
5	E	629	Total 629	O 629	0	0
5	F	606	Total 606	O 606	0	0

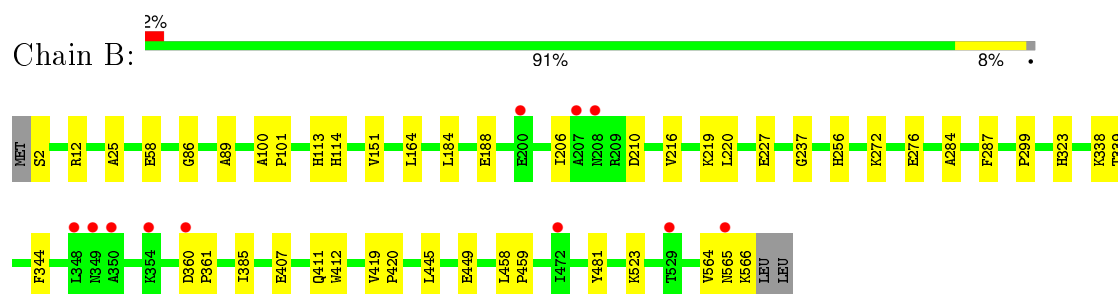
3 Residue-property plots

These plots are drawn for all protein, RNA and DNA chains in the entry. The first graphic for a chain summarises the proportions of errors displayed in the second graphic. The second graphic shows the sequence view annotated by issues in geometry and electron density. Residues are color-coded according to the number of geometric quality criteria for which they contain at least one outlier: green = 0, yellow = 1, orange = 2 and red = 3 or more. A red dot above a residue indicates a poor fit to the electron density ($RSRZ > 2$). Stretches of 2 or more consecutive residues without any outlier are shown as a green connector. Residues present in the sample, but not in the model, are shown in grey.

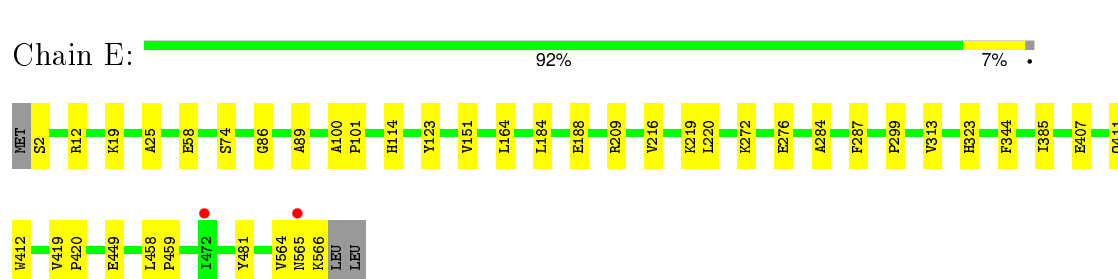
• Molecule 1: PYRUVATE DECARBOXYLASE



• Molecule 1: PYRUVATE DECARBOXYLASE

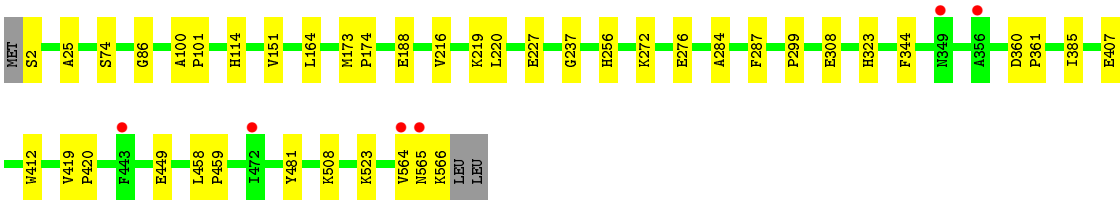


• Molecule 1: PYRUVATE DECARBOXYLASE



• Molecule 1: PYRUVATE DECARBOXYLASE





4 Data and refinement statistics

Property	Value	Source
Space group	P 1	Depositor
Cell constants a, b, c, α , β , γ	70.28Å 92.09Å 98.63Å 73.44° 85.76° 67.82°	Depositor
Resolution (Å)	32.04 – 1.75 34.25 – 1.70	Depositor EDS
% Data completeness (in resolution range)	93.8 (32.04-1.75) 83.1 (34.25-1.70)	Depositor EDS
R_{merge}	0.12	Depositor
R_{sym}	(Not available)	Depositor
$\langle I/\sigma(I) \rangle$ ¹	1.93 (at 1.70Å)	Xtriage
Refinement program	PHENIX (PHENIX.REFINE)	Depositor
R, R_{free}	0.157 , 0.187 0.153 , 0.182	Depositor DCC
R_{free} test set	10348 reflections (5.26%)	DCC
Wilson B-factor (Å ²)	18.1	Xtriage
Anisotropy	0.688	Xtriage
Bulk solvent k_{sol} (e/Å ³), B_{sol} (Å ²)	0.35 , 53.2	EDS
Estimated twinning fraction	No twinning to report.	Xtriage
L-test for twinning ²	$\langle L \rangle = 0.49$, $\langle L^2 \rangle = 0.32$	Xtriage
Outliers	0 of 220556 reflections	Xtriage
F_o, F_c correlation	0.97	EDS
Total number of atoms	19553	wwPDB-VP
Average B, all atoms (Å ²)	25.0	wwPDB-VP

Xtriage's analysis on translational NCS is as follows: *The largest off-origin peak in the Patterson function is 5.34% of the height of the origin peak. No significant pseudotranslation is detected.*

¹Intensities estimated from amplitudes.

²Theoretical values of $\langle |L| \rangle$, $\langle L^2 \rangle$ for acentric reflections are 0.5, 0.375 respectively for untwinned datasets, and 0.333, 0.2 for perfectly twinned datasets.

5 Model quality [i](#)

5.1 Standard geometry [i](#)

Bond lengths and bond angles in the following residue types are not validated in this section: TPU, MG, F

The Z score for a bond length (or angle) is the number of standard deviations the observed value is removed from the expected value. A bond length (or angle) with $|Z| > 5$ is considered an outlier worth inspection. RMSZ is the root-mean-square of all Z scores of the bond lengths (or angles).

Mol	Chain	Bond lengths		Bond angles	
		RMSZ	$\# Z > 5$	RMSZ	$\# Z > 5$
1	A	0.37	0/4378	0.50	0/5952
1	B	0.34	0/4364	0.49	0/5933
1	E	0.40	0/4364	0.51	0/5933
1	F	0.36	0/4364	0.49	0/5933
All	All	0.37	0/17470	0.50	0/23751

There are no bond length outliers.

There are no bond angle outliers.

There are no chirality outliers.

There are no planarity outliers.

5.2 Too-close contacts [i](#)

In the following table, the Non-H and H(model) columns list the number of non-hydrogen atoms and hydrogen atoms in the chain respectively. The H(added) column lists the number of hydrogen atoms added and optimized by MolProbity. The Clashes column lists the number of clashes within the asymmetric unit, whereas Symm-Clashes lists symmetry related clashes.

Mol	Chain	Non-H	H(model)	H(added)	Clashes	Symm-Clashes
1	A	4277	0	4257	38	0
1	B	4269	0	4241	29	0
1	E	4269	0	4241	25	0
1	F	4269	0	4241	26	0
2	A	1	0	0	0	0
2	B	1	0	0	0	0
2	E	1	0	0	0	0
2	F	1	0	0	0	0
3	A	26	0	15	0	0

Continued on next page...

Continued from previous page...

Mol	Chain	Non-H	H(model)	H(added)	Clashes	Symm-Clashes
3	B	26	0	15	0	0
3	E	26	0	15	0	0
3	F	26	0	15	0	0
4	A	1	0	0	0	0
4	B	1	0	0	0	0
4	E	1	0	0	0	0
4	F	1	0	0	0	0
5	A	573	0	0	11	0
5	B	549	0	0	4	0
5	E	629	0	0	6	0
5	F	606	0	0	4	0
All	All	19553	0	17040	111	0

The all-atom clashscore is defined as the number of clashes found per 1000 atoms (including hydrogen atoms). The all-atom clashscore for this structure is 3.

All (111) close contacts within the same asymmetric unit are listed below, sorted by their clash magnitude.

Atom-1	Atom-2	Interatomic distance (Å)	Clash overlap (Å)
1:A:566:LYS:HE2	1:E:566:LYS:HE2	1.46	0.94
1:A:519:ALA:O	1:A:523:LYS:HD3	1.75	0.87
1:B:237:GLY:HA2	1:B:256:HIS:CE1	2.24	0.72
1:A:123:TYR:HE2	5:A:2100:HOH:O	1.73	0.71
1:E:123:TYR:HE2	5:E:2091:HOH:O	1.76	0.67
1:E:2:SER:HB2	5:E:2246:HOH:O	1.97	0.64
1:E:276:GLU:HB3	5:E:2370:HOH:O	1.98	0.62
1:A:2:SER:HB2	5:A:2243:HOH:O	1.99	0.61
1:F:2:SER:HB2	5:F:2239:HOH:O	2.00	0.60
1:A:123:TYR:CE2	5:A:2100:HOH:O	2.52	0.60
1:B:2:SER:HB2	5:B:2218:HOH:O	2.01	0.60
1:A:188:GLU:O	1:A:323:HIS:HE1	1.86	0.58
1:B:276:GLU:HG3	1:B:344:PHE:CZ	2.38	0.58
1:E:419:VAL:HB	1:E:420:PRO:HD3	1.86	0.58
1:B:419:VAL:HB	1:B:420:PRO:HD3	1.85	0.58
1:F:276:GLU:HG3	1:F:344:PHE:CZ	2.39	0.58
1:E:188:GLU:O	1:E:323:HIS:HE1	1.87	0.57
1:F:419:VAL:HB	1:F:420:PRO:HD3	1.86	0.57
1:E:276:GLU:HG3	1:E:344:PHE:CZ	2.39	0.57
1:F:188:GLU:O	1:F:323:HIS:HE1	1.88	0.57
1:A:419:VAL:HB	1:A:420:PRO:HD3	1.87	0.56
1:A:276:GLU:HG3	1:A:344:PHE:CZ	2.41	0.56

Continued on next page...

Continued from previous page...

Atom-1	Atom-2	Interatomic distance (Å)	Clash overlap (Å)
1:F:237:GLY:HA2	1:F:256:HIS:CE1	2.41	0.56
1:B:188:GLU:O	1:B:323:HIS:HE1	1.89	0.56
1:F:508:LYS:HE2	5:F:2541:HOH:O	2.07	0.55
1:A:121:TYR:HE2	5:A:2136:HOH:O	1.87	0.55
1:B:566:LYS:HE2	1:F:566:LYS:HE2	1.89	0.54
1:B:339:THR:N	5:B:2270:HOH:O	2.40	0.54
1:E:19:LYS:HE2	5:E:2018:HOH:O	2.08	0.53
1:E:272:LYS:O	1:E:276:GLU:HG2	2.09	0.52
1:F:272:LYS:O	1:F:276:GLU:HG2	2.08	0.52
1:A:272:LYS:O	1:A:276:GLU:HG2	2.09	0.52
1:A:276:GLU:HB3	5:A:2354:HOH:O	2.09	0.52
1:A:371:ALA:HB1	5:A:2447:HOH:O	2.09	0.52
1:B:272:LYS:O	1:B:276:GLU:HG2	2.09	0.52
1:B:227:GLU:HG3	5:B:2289:HOH:O	2.12	0.50
1:B:151:VAL:HG21	1:B:164:LEU:HG	1.95	0.49
1:A:508:LYS:HE2	5:A:2526:HOH:O	2.12	0.49
1:A:151:VAL:HG21	1:A:164:LEU:HG	1.95	0.48
1:E:151:VAL:HG21	1:E:164:LEU:HG	1.96	0.48
1:A:472:ILE:HG13	1:A:548:LEU:HD11	1.94	0.48
1:A:237:GLY:HA2	1:A:256:HIS:CE1	2.48	0.48
1:B:523:LYS:HB3	1:B:523:LYS:HE2	1.54	0.47
1:A:19:LYS:HE2	5:A:2016:HOH:O	2.14	0.47
1:A:89:ALA:HB1	1:A:411:GLN:HG3	1.97	0.47
1:F:151:VAL:HG21	1:F:164:LEU:HG	1.98	0.46
1:B:385:ILE:HD13	1:B:407:GLU:HB2	1.98	0.46
1:F:523:LYS:HE2	1:F:523:LYS:HB3	1.55	0.46
1:F:227:GLU:HG3	5:F:2309:HOH:O	2.16	0.46
1:F:385:ILE:HD13	1:F:407:GLU:HB2	1.98	0.46
1:B:89:ALA:HB1	1:B:411:GLN:HG3	1.98	0.45
1:E:385:ILE:HD13	1:E:407:GLU:HB2	1.99	0.45
1:A:86:GLY:HA2	1:A:412:TRP:CG	2.52	0.45
1:E:86:GLY:HA2	1:E:412:TRP:CG	2.52	0.45
1:A:204:LYS:HG3	5:A:2278:HOH:O	2.17	0.44
1:B:12:ARG:HD2	1:B:184:LEU:HD11	1.99	0.44
1:B:86:GLY:HA2	1:B:412:TRP:CG	2.53	0.44
1:F:100:ALA:HB1	1:F:101:PRO:HD2	1.99	0.44
1:F:86:GLY:HA2	1:F:412:TRP:CG	2.53	0.44
1:A:216:VAL:HG13	1:A:220:LEU:HD22	1.99	0.44
1:B:216:VAL:HG13	1:B:220:LEU:HD22	1.99	0.43
1:A:78[B]:LEU:HD21	5:A:2100:HOH:O	2.17	0.43
1:E:216:VAL:HG13	1:E:220:LEU:HD22	1.99	0.43

Continued on next page...

Continued from previous page...

Atom-1	Atom-2	Interatomic distance (Å)	Clash overlap (Å)
1:A:385:ILE:HD13	1:A:407:GLU:HB2	2.00	0.43
1:E:25:ALA:HB2	1:F:481:TYR:HB2	2.01	0.43
1:F:564:VAL:HG12	1:F:565:ASN:N	2.34	0.43
1:A:219:LYS:HB2	1:A:284:ALA:HB1	2.00	0.43
1:B:100:ALA:HB1	1:B:101:PRO:HD2	2.01	0.43
1:F:458:LEU:HA	1:F:459:PRO:HD3	1.87	0.43
1:A:481:TYR:HB2	1:B:25:ALA:HB2	2.01	0.43
1:E:100:ALA:HB1	1:E:101:PRO:HD2	2.01	0.42
1:E:481:TYR:HB2	1:F:25:ALA:HB2	2.01	0.42
1:A:458:LEU:HA	1:A:459:PRO:HD3	1.84	0.42
1:A:12:ARG:HD2	1:A:184:LEU:HD11	2.01	0.42
1:A:520:GLU:HA	1:A:523:LYS:HE2	2.00	0.42
1:B:564:VAL:HG12	1:B:565:ASN:N	2.35	0.42
1:B:287:PHE:CZ	1:B:299:PRO:HG2	2.55	0.42
1:E:458:LEU:HA	1:E:459:PRO:HD3	1.85	0.42
1:E:287:PHE:CZ	1:E:299:PRO:HG2	2.55	0.42
1:B:458:LEU:HA	1:B:459:PRO:HD3	1.87	0.42
1:F:216:VAL:HG13	1:F:220:LEU:HD22	2.00	0.42
1:E:564:VAL:HG12	1:E:565:ASN:N	2.35	0.42
1:F:219:LYS:HB2	1:F:284:ALA:HB1	2.02	0.42
1:F:287:PHE:CZ	1:F:299:PRO:HG2	2.55	0.42
1:A:564:VAL:HG12	1:A:565:ASN:N	2.35	0.42
1:A:206:ILE:HD12	1:A:338:LYS:HD2	2.01	0.42
1:E:89:ALA:HB1	1:E:411:GLN:HG3	2.02	0.42
1:A:110:HIS:HB2	5:A:2136:HOH:O	2.20	0.41
1:F:308:GLU:CG	5:F:2378:HOH:O	2.68	0.41
1:A:287:PHE:CZ	1:A:299:PRO:HG2	2.55	0.41
1:E:12:ARG:HD2	1:E:184:LEU:HD11	2.02	0.41
1:F:360:ASP:HA	1:F:361:PRO:HD3	1.94	0.41
1:A:25:ALA:HB2	1:B:481:TYR:HB2	2.03	0.41
1:E:74[A]:SER:CB	1:E:114:HIS:O	2.69	0.41
1:B:360:ASP:HA	1:B:361:PRO:HD3	1.94	0.41
1:F:74[A]:SER:CB	1:F:114:HIS:O	2.68	0.41
1:B:219:LYS:HB2	1:B:284:ALA:HB1	2.02	0.41
1:A:49:ASN:HB3	1:B:445:LEU:HG	2.02	0.41
1:B:419:VAL:HB	1:B:420:PRO:CD	2.51	0.41
1:B:210:ASP:OD1	5:B:2270:HOH:O	2.22	0.41
1:F:74[B]:SER:HB3	1:F:114:HIS:O	2.20	0.41
1:B:206:ILE:HD12	1:B:338:LYS:HD2	2.02	0.41
1:E:209:ARG:NH1	5:E:2304:HOH:O	2.54	0.41
1:E:313:VAL:HG23	5:E:2397:HOH:O	2.21	0.41

Continued on next page...

Continued from previous page...

Atom-1	Atom-2	Interatomic distance (Å)	Clash overlap (Å)
1:A:101:PRO:HB3	1:A:112:LEU:CD1	2.51	0.41
1:A:74[A]:SER:CB	1:A:114:HIS:O	2.69	0.40
1:A:113:HIS:O	1:A:114:HIS:HB2	2.22	0.40
1:B:113:HIS:O	1:B:114:HIS:HB2	2.21	0.40
1:F:173:MET:HA	1:F:174:PRO:HD3	1.92	0.40
1:E:219:LYS:HB2	1:E:284:ALA:HB1	2.03	0.40

There are no symmetry-related clashes.

5.3 Torsion angles [i](#)

5.3.1 Protein backbone [i](#)

In the following table, the Percentiles column shows the percent Ramachandran outliers of the chain as a percentile score with respect to all X-ray entries followed by that with respect to entries of similar resolution.

The Analysed column shows the number of residues for which the backbone conformation was analysed, and the total number of residues.

Mol	Chain	Analysed	Favoured	Allowed	Outliers	Percentiles	
1	A	566/568 (100%)	556 (98%)	10 (2%)	0	100	100
1	B	564/568 (99%)	554 (98%)	10 (2%)	0	100	100
1	E	564/568 (99%)	555 (98%)	9 (2%)	0	100	100
1	F	564/568 (99%)	554 (98%)	10 (2%)	0	100	100
All	All	2258/2272 (99%)	2219 (98%)	39 (2%)	0	100	100

There are no Ramachandran outliers to report.

5.3.2 Protein sidechains [i](#)

In the following table, the Percentiles column shows the percent sidechain outliers of the chain as a percentile score with respect to all X-ray entries followed by that with respect to entries of similar resolution.

The Analysed column shows the number of residues for which the sidechain conformation was analysed, and the total number of residues.

Mol	Chain	Analysed	Rotameric	Outliers	Percentiles	
1	A	437/437 (100%)	434 (99%)	3 (1%)	88	79
1	B	435/437 (100%)	433 (100%)	2 (0%)	92	87
1	E	435/437 (100%)	433 (100%)	2 (0%)	92	87
1	F	435/437 (100%)	434 (100%)	1 (0%)	95	93
All	All	1742/1748 (100%)	1734 (100%)	8 (0%)	92	87

All (8) residues with a non-rotameric sidechain are listed below:

Mol	Chain	Res	Type
1	A	330	ARG
1	A	449	GLU
1	A	523	LYS
1	B	58	GLU
1	B	449	GLU
1	E	58	GLU
1	E	449	GLU
1	F	449	GLU

Some sidechains can be flipped to improve hydrogen bonding and reduce clashes. All (15) such sidechains are listed below:

Mol	Chain	Res	Type
1	A	41	ASN
1	A	44	GLN
1	A	256	HIS
1	A	323	HIS
1	B	44	GLN
1	B	256	HIS
1	B	323	HIS
1	E	41	ASN
1	E	44	GLN
1	E	256	HIS
1	E	323	HIS
1	F	41	ASN
1	F	44	GLN
1	F	256	HIS
1	F	323	HIS

5.3.3 RNA ⓘ

There are no RNA molecules in this entry.

5.4 Non-standard residues in protein, DNA, RNA chains ⓘ

There are no non-standard protein/DNA/RNA residues in this entry.

5.5 Carbohydrates ⓘ

There are no carbohydrates in this entry.

5.6 Ligand geometry ⓘ

Of 12 ligands modelled in this entry, 8 are monoatomic - leaving 4 for Mogul analysis.

In the following table, the Counts columns list the number of bonds (or angles) for which Mogul statistics could be retrieved, the number of bonds (or angles) that are observed in the model and the number of bonds (or angles) that are defined in the chemical component dictionary. The Link column lists molecule types, if any, to which the group is linked. The Z score for a bond length (or angle) is the number of standard deviations the observed value is removed from the expected value. A bond length (or angle) with $|Z| > 2$ is considered an outlier worth inspection. RMSZ is the root-mean-square of all Z scores of the bond lengths (or angles).

Mol	Type	Chain	Res	Link	Bond lengths			Bond angles		
					Counts	RMSZ	# $ Z > 2$	Counts	RMSZ	# $ Z > 2$
3	TPU	A	600	4	24,27,27	2.19	8 (33%)	33,40,40	2.19	9 (27%)
3	TPU	B	600	4	24,27,27	2.24	8 (33%)	33,40,40	2.16	9 (27%)
3	TPU	E	600	4	24,27,27	2.19	8 (33%)	33,40,40	2.19	7 (21%)
3	TPU	F	600	4	24,27,27	2.09	8 (33%)	33,40,40	2.18	10 (30%)

In the following table, the Chirals column lists the number of chiral outliers, the number of chiral centers analysed, the number of these observed in the model and the number defined in the chemical component dictionary. Similar counts are reported in the Torsion and Rings columns. '-' means no outliers of that kind were identified.

Mol	Type	Chain	Res	Link	Chirals	Torsions	Rings
3	TPU	A	600	4	-	0/17/17/17	0/2/2/2
3	TPU	B	600	4	-	0/17/17/17	0/2/2/2
3	TPU	E	600	4	-	0/17/17/17	0/2/2/2
3	TPU	F	600	4	-	0/17/17/17	0/2/2/2

All (32) bond length outliers are listed below:

Mol	Chain	Res	Type	Atoms	Z	Observed(Å)	Ideal(Å)
3	E	600	TPU	C4'-N3'	-2.79	1.30	1.35
3	B	600	TPU	C4'-N3'	-2.74	1.30	1.35

Continued on next page...

Continued from previous page...

Mol	Chain	Res	Type	Atoms	Z	Observed(Å)	Ideal(Å)
3	A	600	TPU	C4'-N3'	-2.64	1.30	1.35
3	F	600	TPU	C4'-N3'	-2.60	1.31	1.35
3	F	600	TPU	C2'-N3'	2.11	1.38	1.34
3	A	600	TPU	C2'-N3'	2.11	1.38	1.34
3	F	600	TPU	N2-N3	2.13	1.38	1.34
3	E	600	TPU	C2'-N3'	2.14	1.38	1.34
3	F	600	TPU	P2-O23	2.25	1.62	1.54
3	B	600	TPU	C2'-N3'	2.27	1.38	1.34
3	B	600	TPU	P2-O23	2.41	1.63	1.54
3	E	600	TPU	N2-N3	2.42	1.39	1.34
3	A	600	TPU	N2-N3	2.44	1.39	1.34
3	E	600	TPU	P2-O23	2.51	1.63	1.54
3	A	600	TPU	P2-O23	2.51	1.63	1.54
3	E	600	TPU	P2-O22	2.56	1.63	1.54
3	F	600	TPU	P2-O22	2.58	1.64	1.54
3	B	600	TPU	N2-N3	2.71	1.39	1.34
3	A	600	TPU	P2-O22	2.76	1.64	1.54
3	B	600	TPU	P2-O22	2.77	1.64	1.54
3	E	600	TPU	C4'-N4'	3.92	1.43	1.34
3	A	600	TPU	C2'-N1'	3.96	1.41	1.34
3	E	600	TPU	C2'-N1'	3.97	1.41	1.34
3	F	600	TPU	C4'-N4'	4.12	1.44	1.34
3	F	600	TPU	C2'-N1'	4.17	1.41	1.34
3	B	600	TPU	C4'-N4'	4.22	1.44	1.34
3	A	600	TPU	C4'-N4'	4.23	1.44	1.34
3	B	600	TPU	C2'-N1'	4.34	1.41	1.34
3	F	600	TPU	C5-N1	4.98	1.40	1.33
3	A	600	TPU	C5-N1	5.42	1.41	1.33
3	B	600	TPU	C5-N1	5.49	1.41	1.33
3	E	600	TPU	C5-N1	5.57	1.41	1.33

All (35) bond angle outliers are listed below:

Mol	Chain	Res	Type	Atoms	Z	Observed(°)	Ideal(°)
3	A	600	TPU	C4-N3-N2	-5.87	107.49	113.02
3	F	600	TPU	C4-N3-N2	-5.63	107.71	113.02
3	E	600	TPU	C4-N3-N2	-5.55	107.79	113.02
3	B	600	TPU	C4-N3-N2	-5.51	107.83	113.02
3	F	600	TPU	N1'-C2'-N3'	-3.01	120.04	125.60
3	E	600	TPU	N1'-C2'-N3'	-2.97	120.10	125.60
3	A	600	TPU	N1'-C2'-N3'	-2.95	120.14	125.60
3	B	600	TPU	N1'-C2'-N3'	-2.75	120.52	125.60

Continued on next page...

Continued from previous page...

Mol	Chain	Res	Type	Atoms	Z	Observed(°)	Ideal(°)
3	B	600	TPU	C5'-C6'-N1'	-2.26	119.94	123.86
3	F	600	TPU	C5'-C6'-N1'	-2.09	120.22	123.86
3	B	600	TPU	C5B-C5A-C5	2.00	117.39	112.36
3	F	600	TPU	N4'-C4'-N3'	2.01	119.86	116.95
3	A	600	TPU	C5B-C5A-C5	2.03	117.47	112.36
3	A	600	TPU	C2A-C2'-N1'	2.14	119.60	117.03
3	A	600	TPU	C6'-N1'-C2'	2.21	119.64	115.77
3	F	600	TPU	O12-P1-O11	2.23	115.21	105.09
3	E	600	TPU	C5B-C5A-C5	2.23	117.97	112.36
3	B	600	TPU	C6'-N1'-C2'	2.24	119.69	115.77
3	E	600	TPU	C6'-N1'-C2'	2.25	119.70	115.77
3	A	600	TPU	N4'-C4'-N3'	2.25	120.21	116.95
3	F	600	TPU	C6'-N1'-C2'	2.31	119.81	115.77
3	F	600	TPU	C5B-C5A-C5	2.37	118.31	112.36
3	E	600	TPU	C6'-C5'-C4'	2.41	119.18	115.72
3	B	600	TPU	C2A-C2'-N1'	2.53	120.07	117.03
3	A	600	TPU	C6'-C5'-C4'	2.56	119.39	115.72
3	F	600	TPU	C2A-C2'-N1'	2.58	120.13	117.03
3	E	600	TPU	C2A-C2'-N1'	2.58	120.13	117.03
3	B	600	TPU	O12-P1-O11	2.59	116.85	105.09
3	B	600	TPU	C6'-C5'-C4'	2.64	119.52	115.72
3	F	600	TPU	C6'-C5'-C4'	2.68	119.56	115.72
3	A	600	TPU	O12-P1-O11	2.83	117.93	105.09
3	A	600	TPU	C35-N3-N2	7.82	126.48	117.38
3	F	600	TPU	C35-N3-N2	7.84	126.51	117.38
3	B	600	TPU	C35-N3-N2	8.13	126.84	117.38
3	E	600	TPU	C35-N3-N2	8.26	127.00	117.38

There are no chirality outliers.

There are no torsion outliers.

There are no ring outliers.

No monomer is involved in short contacts.

5.7 Other polymers [i](#)

There are no such residues in this entry.

5.8 Polymer linkage issues [i](#)

There are no chain breaks in this entry.

6 Fit of model and data ⓘ

6.1 Protein, DNA and RNA chains ⓘ

In the following table, the column labelled ‘#RSRZ> 2’ contains the number (and percentage) of RSRZ outliers, followed by percent RSRZ outliers for the chain as percentile scores relative to all X-ray entries and entries of similar resolution. The OWAB column contains the minimum, median, 95th percentile and maximum values of the occupancy-weighted average B-factor per residue. The column labelled ‘Q< 0.9’ lists the number of (and percentage) of residues with an average occupancy less than 0.9.

Mol	Chain	Analysed	<RSRZ>	#RSRZ>2	OWAB(Å ²)	Q<0.9
1	A	565/568 (99%)	-0.26	12 (2%) 67 73	10, 22, 44, 76	1 (0%)
1	B	565/568 (99%)	-0.27	11 (1%) 70 76	11, 23, 44, 76	2 (0%)
1	E	565/568 (99%)	-0.40	2 (0%) 93 94	9, 19, 41, 72	2 (0%)
1	F	565/568 (99%)	-0.37	6 (1%) 82 87	9, 19, 40, 71	2 (0%)
All	All	2260/2272 (99%)	-0.33	31 (1%) 78 84	9, 21, 43, 76	7 (0%)

All (31) RSRZ outliers are listed below:

Mol	Chain	Res	Type	RSRZ
1	B	349	ASN	4.0
1	B	200	GLU	3.4
1	B	208	ASN	3.4
1	B	472	ILE	3.3
1	F	565	ASN	3.0
1	A	354	LYS	2.9
1	B	348	LEU	2.8
1	A	356	ALA	2.7
1	B	529	THR	2.7
1	B	354	LYS	2.7
1	B	350	ALA	2.7
1	F	564	VAL	2.6
1	A	348	LEU	2.6
1	A	349	ASN	2.5
1	F	472	ILE	2.5
1	E	565	ASN	2.4
1	A	565	ASN	2.4
1	B	207	ALA	2.3
1	A	530	ASP	2.3
1	A	500	GLY	2.3
1	B	565	ASN	2.3

Continued on next page...

Continued from previous page...

Mol	Chain	Res	Type	RSRZ
1	E	472	ILE	2.2
1	A	363	ALA	2.2
1	F	356	ALA	2.2
1	A	208	ASN	2.2
1	F	349	ASN	2.2
1	A	501	GLY	2.1
1	A	360	ASP	2.1
1	A	359	ALA	2.1
1	B	360	ASP	2.0
1	F	443	PHE	2.0

6.2 Non-standard residues in protein, DNA, RNA chains [i](#)

There are no non-standard protein/DNA/RNA residues in this entry.

6.3 Carbohydrates [i](#)

There are no carbohydrates in this entry.

6.4 Ligands [i](#)

In the following table, the Atoms column lists the number of modelled atoms in the group and the number defined in the chemical component dictionary. LLDF column lists the quality of electron density of the group with respect to its neighbouring residues in protein, DNA or RNA chains. The B-factors column lists the minimum, median, 95th percentile and maximum values of B factors of atoms in the group. The column labelled 'Q< 0.9' lists the number of atoms with occupancy less than 0.9.

Mol	Type	Chain	Res	Atoms	RSCC	RSR	LLDF	B-factors(Å ²)	Q<0.9
2	F	F	570	1/1	0.95	0.09	4.02	34,34,34,34	0
2	F	E	569	1/1	0.97	0.11	2.82	35,35,35,35	0
2	F	A	569	1/1	0.96	0.09	2.36	37,37,37,37	0
4	MG	B	601	1/1	1.00	0.12	2.20	15,15,15,15	0
4	MG	F	569	1/1	0.99	0.13	1.95	8,8,8,8	0
4	MG	E	601	1/1	1.00	0.10	1.74	10,10,10,10	0
4	MG	A	601	1/1	0.99	0.11	1.57	14,14,14,14	0
3	TPU	A	600	26/26	0.98	0.10	0.50	12,17,22,43	0
2	F	B	569	1/1	0.98	0.08	0.41	37,37,37,37	0
3	TPU	E	600	26/26	0.98	0.09	0.32	10,14,21,34	0
3	TPU	B	600	26/26	0.98	0.10	0.19	13,18,28,43	0

Continued on next page...

Continued from previous page...

Mol	Type	Chain	Res	Atoms	RSCC	RSR	LLDF	B-factors(\AA^2)	Q<0.9
3	TPU	F	600	26/26	0.99	0.10	0.16	10,14,19,31	0

6.5 Other polymers [i](#)

There are no such residues in this entry.