



# Full wwPDB X-ray Structure Validation Report ⓘ

Feb 1, 2016 – 06:22 AM GMT

PDB ID : 2WVL  
Title : Mannosyl-3-phosphoglycerate synthase from *Thermus thermophilus* HB27 in complex with GDP-alpha-D-Mannose and Mg(II)  
Authors : Goncalves, S.; Borges, N.; Esteves, A.M.; Victor, B.; Soares, C.M.; Santos, H.; Matias, P.M.  
Deposited on : 2009-10-19  
Resolution : 2.81 Å(reported)

This is a Full wwPDB X-ray Structure Validation Report for a publicly released PDB entry.  
We welcome your comments at [validation@mail.wwpdb.org](mailto:validation@mail.wwpdb.org)  
A user guide is available at  
<http://wwpdb.org/validation/2016/XrayValidationReportHelp>  
with specific help available everywhere you see the ⓘ symbol.

---

The following versions of software and data (see [references ⓘ](#)) were used in the production of this report:

MolProbity : 4.02b-467  
Mogul : 1.7 (RC4), CSD as536be (2015)  
Xtriage (Phenix) : 1.9-1692  
EDS : rb-20026688  
Percentile statistics : 20151230.v01 (using entries in the PDB archive December 30th 2015)  
Refmac : 5.8.0135  
CCP4 : 6.5.0  
Ideal geometry (proteins) : Engh & Huber (2001)  
Ideal geometry (DNA, RNA) : Parkinson et al. (1996)  
Validation Pipeline (wwPDB-VP) : trunk26865

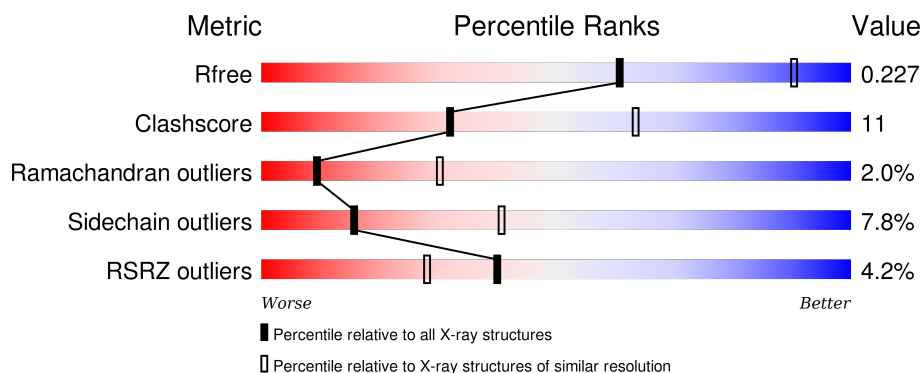
# 1 Overall quality at a glance

The following experimental techniques were used to determine the structure:

*X-RAY DIFFRACTION*


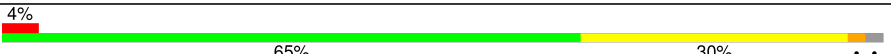
The reported resolution of this entry is 2.81 Å.

Percentile scores (ranging between 0-100) for global validation metrics of the entry are shown in the following graphic. The table shows the number of entries on which the scores are based.



Metric	Whole archive (#Entries)	Similar resolution (#Entries, resolution range(Å))
$R_{free}$	91344	2393 (2.80-2.80)
Clashscore	102246	2827 (2.80-2.80)
Ramachandran outliers	100387	2782 (2.80-2.80)
Sidechain outliers	100360	2784 (2.80-2.80)
RSRZ outliers	91569	2404 (2.80-2.80)

The table below summarises the geometric issues observed across the polymeric chains and their fit to the electron density. The red, orange, yellow and green segments on the lower bar indicate the fraction of residues that contain outliers for  $\geq 3$ , 2, 1 and 0 types of geometric quality criteria. A grey segment represents the fraction of residues that are not modelled. The numeric value for each fraction is indicated below the corresponding segment, with a dot representing fractions  $\leq 5\%$ . The upper red bar (where present) indicates the fraction of residues that have poor fit to the electron density. The numeric value is given above the bar.

Mol	Chain	Length	Quality of chain
1	A	391	 4% 76% 20% ..
1	B	391	 4% 65% 30% ..

## 2 Entry composition [i](#)

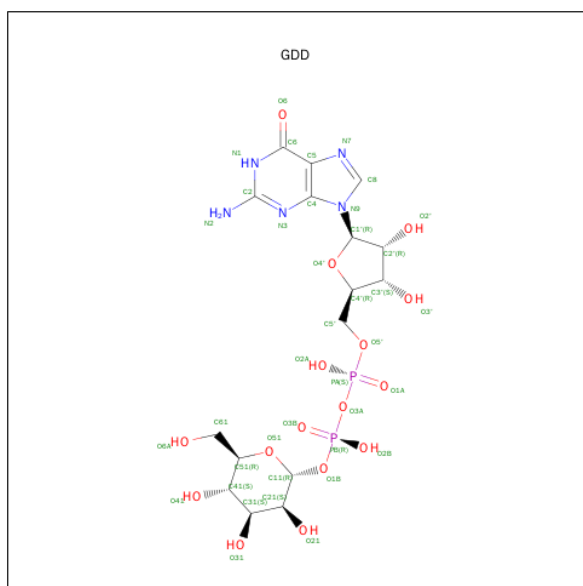
There are 5 unique types of molecules in this entry. The entry contains 6147 atoms, of which 0 are hydrogens and 0 are deuteriums.

In the tables below, the ZeroOcc column contains the number of atoms modelled with zero occupancy, the AltConf column contains the number of residues with at least one atom in alternate conformation and the Trace column contains the number of residues modelled with at most 2 atoms.

- Molecule 1 is a protein called MANNOSYL-3-PHOSPHOGLYCERATE SYNTHASE.

Mol	Chain	Residues	Atoms					ZeroOcc	AltConf	Trace
1	A	385	Total	C	N	O	S	0	0	0
			3027	1922	545	552	8			
1	B	382	Total	C	N	O	S	0	0	0
			2999	1902	541	548	8			

- Molecule 2 is GUANOSINE-5'-DIPHOSPHATE-ALPHA-D-MANNOSE (three-letter code: GDD) (formula:  $C_{16}H_{25}N_5O_{16}P_2$ ).



Mol	Chain	Residues	Atoms					ZeroOcc	AltConf
2	A	1	Total	C	N	O	P	0	0
			39	16	5	16	2		
2	B	1	Total	C	N	O	P	0	0
			39	16	5	16	2		

- Molecule 3 is MAGNESIUM ION (three-letter code: MG) (formula: Mg).

Mol	Chain	Residues	Atoms		ZeroOcc	AltConf
3	B	1	Total 1	Mg 1	0	0
3	A	1	Total 1	Mg 1	0	0

- Molecule 4 is ZINC ION (three-letter code: ZN) (formula: Zn).

Mol	Chain	Residues	Atoms		ZeroOcc	AltConf
4	B	3	Total 3	Zn 3	0	0
4	A	2	Total 2	Zn 2	0	0


- Molecule 5 is water.

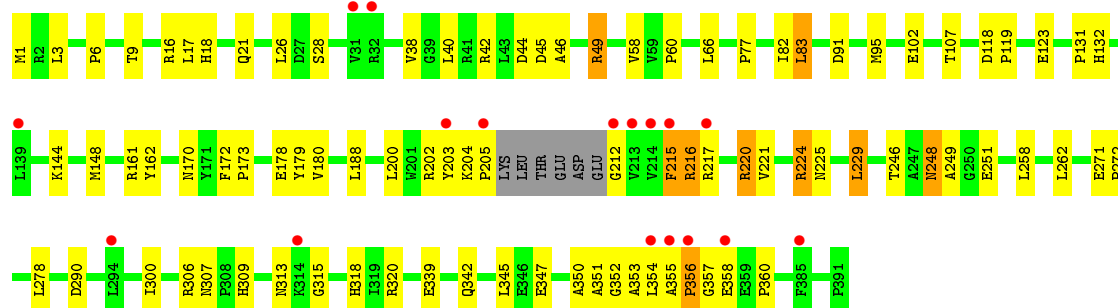
Mol	Chain	Residues	Atoms		ZeroOcc	AltConf
5	A	17	Total 17	O 17	0	0
5	B	19	Total 19	O 19	0	0

### 3 Residue-property plots

These plots are drawn for all protein, RNA and DNA chains in the entry. The first graphic for a chain summarises the proportions of errors displayed in the second graphic. The second graphic shows the sequence view annotated by issues in geometry and electron density. Residues are color-coded according to the number of geometric quality criteria for which they contain at least one outlier: green = 0, yellow = 1, orange = 2 and red = 3 or more. A red dot above a residue indicates a poor fit to the electron density ( $RSRZ > 2$ ). Stretches of 2 or more consecutive residues without any outlier are shown as a green connector. Residues present in the sample, but not in the model, are shown in grey.

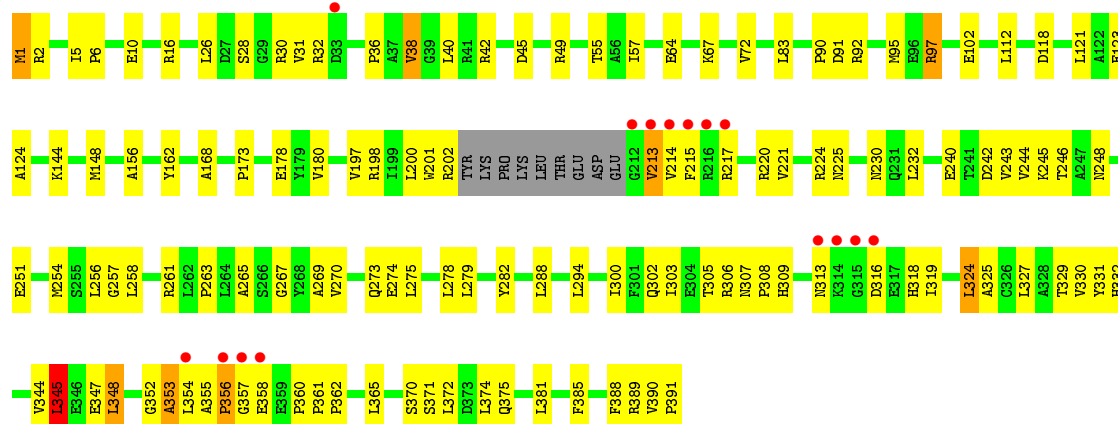
#### • Molecule 1: MANNOSYL-3-PHOSPHOGLYCERATE SYNTHASE

Chain A: 



#### • Molecule 1: MANNOSYL-3-PHOSPHOGLYCERATE SYNTHASE

Chain B: 



## 4 Data and refinement statistics

Property	Value	Source
Space group	P 41 21 2	Depositor
Cell constants a, b, c, $\alpha$ , $\beta$ , $\gamma$	113.46 Å   113.46 Å   195.98 Å 90.00°   90.00°   90.00°	Depositor
Resolution (Å)	45.08 – 2.81 44.98 – 2.81	Depositor EDS
% Data completeness (in resolution range)	99.4 (45.08-2.81) 99.4 (44.98-2.81)	Depositor EDS
$R_{merge}$	0.07	Depositor
$R_{sym}$	(Not available)	Depositor
$\langle I/\sigma(I) \rangle$ <sup>1</sup>	1.78 (at 2.81 Å)	Xtriage
Refinement program	REFMAC 5.5.0088	Depositor
R, $R_{free}$	0.173   ,   0.234 0.171   ,   0.227	Depositor DCC
$R_{free}$ test set	1620 reflections (5.35%)	DCC
Wilson B-factor (Å <sup>2</sup> )	95.9	Xtriage
Anisotropy	0.009	Xtriage
Bulk solvent $k_{sol}$ (e/Å <sup>3</sup> ), $B_{sol}$ (Å <sup>2</sup> )	0.31 , 86.3	EDS
Estimated twinning fraction	No twinning to report.	Xtriage
L-test for twinning <sup>2</sup>	$\langle  L  \rangle = 0.50$ , $\langle L^2 \rangle = 0.33$	Xtriage
Outliers	2 of 31879 reflections (0.006%)	Xtriage
$F_o, F_c$ correlation	0.97	EDS
Total number of atoms	6147	wwPDB-VP
Average B, all atoms (Å <sup>2</sup> )	71.0	wwPDB-VP

Xtriage's analysis on translational NCS is as follows: *The largest off-origin peak in the Patterson function is 3.42% of the height of the origin peak. No significant pseudotranslation is detected.*

<sup>1</sup>Intensities estimated from amplitudes.

<sup>2</sup>Theoretical values of  $\langle |L| \rangle$ ,  $\langle L^2 \rangle$  for acentric reflections are 0.5, 0.375 respectively for untwinned datasets, and 0.333, 0.2 for perfectly twinned datasets.

## 5 Model quality [i](#)

### 5.1 Standard geometry [i](#)

Bond lengths and bond angles in the following residue types are not validated in this section: ZN, GDD, MG

The Z score for a bond length (or angle) is the number of standard deviations the observed value is removed from the expected value. A bond length (or angle) with  $|Z| > 5$  is considered an outlier worth inspection. RMSZ is the root-mean-square of all Z scores of the bond lengths (or angles).

Mol	Chain	Bond lengths		Bond angles	
		RMSZ	$\# Z  > 5$	RMSZ	$\# Z  > 5$
1	A	0.79	0/3092	0.86	3/4191 (0.1%)
1	B	0.72	1/3062 (0.0%)	0.79	0/4150
All	All	0.76	1/6154 (0.0%)	0.82	3/8341 (0.0%)

All (1) bond length outliers are listed below:

Mol	Chain	Res	Type	Atoms	Z	Observed(Å)	Ideal(Å)
1	B	1	MET	N-CA	-17.30	1.11	1.46

All (3) bond angle outliers are listed below:

Mol	Chain	Res	Type	Atoms	Z	Observed(°)	Ideal(°)
1	A	49	ARG	NE-CZ-NH2	-8.07	116.27	120.30
1	A	49	ARG	NE-CZ-NH1	7.40	124.00	120.30
1	A	229	LEU	CA-CB-CG	-5.50	102.65	115.30

There are no chirality outliers.

There are no planarity outliers.

### 5.2 Too-close contacts [i](#)

In the following table, the Non-H and H(model) columns list the number of non-hydrogen atoms and hydrogen atoms in the chain respectively. The H(added) column lists the number of hydrogen atoms added and optimized by MolProbity. The Clashes column lists the number of clashes within the asymmetric unit, whereas Symm-Clashes lists symmetry related clashes.

Mol	Chain	Non-H	H(model)	H(added)	Clashes	Symm-Clashes
1	A	3027	0	3036	51	0
1	B	2999	0	3007	81	0

*Continued on next page...*

*Continued from previous page...*

Mol	Chain	Non-H	H(model)	H(added)	Clashes	Symm-Clashes
2	A	39	0	23	1	0
2	B	39	0	23	1	0
3	A	1	0	0	0	0
3	B	1	0	0	0	0
4	A	2	0	0	0	0
4	B	3	0	0	0	0
5	A	17	0	0	2	0
5	B	19	0	0	3	0
All	All	6147	0	6089	129	0

The all-atom clashscore is defined as the number of clashes found per 1000 atoms (including hydrogen atoms). The all-atom clashscore for this structure is 11.

All (129) close contacts within the same asymmetric unit are listed below, sorted by their clash magnitude.

Atom-1	Atom-2	Interatomic distance (Å)	Clash overlap (Å)
2:B:400:GDD:H612	5:B:2019:HOH:O	1.64	0.98
1:B:230:ASN:HD21	1:B:244:VAL:H	1.16	0.91
1:B:355:ALA:HB3	1:B:356:PRO:HD3	1.58	0.84
1:A:212:GLY:HA2	1:A:215:PHE:HE2	1.49	0.78
1:B:245:LYS:H	1:B:302:GLN:HE22	1.32	0.77
1:B:278:LEU:HD13	1:B:300:ILE:HD11	1.74	0.69
1:A:355:ALA:HB3	1:A:356:PRO:HD3	1.74	0.68
1:A:278:LEU:HD13	1:A:300:ILE:HD11	1.76	0.68
1:A:173:PRO:HG2	1:B:306:ARG:HB3	1.76	0.67
1:B:390:VAL:HG12	1:B:390:VAL:O	1.95	0.66
1:B:232:LEU:HD13	1:B:330:VAL:HG13	1.77	0.66
1:B:10:GLU:HG3	1:B:243:VAL:HG11	1.78	0.65
1:B:224:ARG:HH11	1:B:347:GLU:HG3	1.62	0.64
1:B:225:ASN:HD22	1:B:248:ASN:HD21	1.45	0.64
1:B:1:MET:H1	1:B:28:SER:H	1.45	0.62
1:B:282:TYR:HD1	1:B:288:LEU:HD13	1.64	0.62
1:A:356:PRO:HB2	1:A:357:GLY:CA	2.31	0.60
1:B:263:PRO:HB2	1:B:365:LEU:HD23	1.84	0.60
1:B:327:LEU:HD22	1:B:348:LEU:HD23	1.84	0.60
1:A:356:PRO:HB2	1:A:357:GLY:HA3	1.86	0.58
1:B:257:GLY:O	1:B:261:ARG:HG3	2.03	0.58
1:B:331:TYR:CE1	1:B:345:LEU:HD23	2.38	0.57
1:A:315:GLY:HA3	1:A:318:HIS:CD2	2.40	0.57
1:B:230:ASN:ND2	1:B:244:VAL:H	1.96	0.57
1:A:271:GLU:HB2	1:A:272:PRO:HD3	1.86	0.56

*Continued on next page...*



*Continued from previous page...*

Atom-1	Atom-2	Interatomic distance (Å)	Clash overlap (Å)
1:A:249:ALA:H	1:A:271:GLU:HG2	1.70	0.56
1:A:217:ARG:HH12	1:A:220:ARG:HD3	1.69	0.56
1:A:203:TYR:OH	1:A:216:ARG:NH1	2.39	0.56
1:B:45:ASP:O	1:B:49:ARG:HG3	2.07	0.55
1:B:309:HIS:ND1	5:B:2015:HOH:O	2.33	0.55
1:A:26:LEU:HD21	1:A:178:GLU:HB2	1.90	0.54
1:B:1:MET:N	1:B:28:SER:OG	2.36	0.54
1:B:305:THR:HG23	1:B:307:ASN:O	2.06	0.54
1:A:356:PRO:CB	1:A:357:GLY:HA3	2.37	0.54
1:B:217:ARG:O	1:B:221:VAL:HG13	2.08	0.54
1:B:31:VAL:O	1:B:31:VAL:HG12	2.08	0.54
1:B:251:GLU:N	1:B:251:GLU:OE1	2.40	0.53
1:B:5:ILE:HG22	1:B:6:PRO:HD2	1.91	0.52
1:B:390:VAL:O	1:B:390:VAL:CG1	2.57	0.52
1:A:258:LEU:HD11	1:A:278:LEU:HD21	1.90	0.52
1:B:201:TRP:HB2	1:B:309:HIS:CD2	2.45	0.52
1:B:197:VAL:HG13	1:B:303:ILE:HD12	1.92	0.52
1:B:5:ILE:CG2	1:B:6:PRO:HD2	2.40	0.52
1:B:242:ASP:O	1:B:245:LYS:NZ	2.43	0.51
1:B:372:LEU:CD2	1:B:374:LEU:HD12	2.39	0.51
1:B:245:LYS:H	1:B:302:GLN:NE2	2.05	0.51
1:B:178:GLU:OE1	1:B:307:ASN:ND2	2.41	0.51
1:B:83:LEU:HD22	1:B:112:LEU:HB2	1.92	0.51
1:A:200:LEU:HB3	1:A:246:THR:HG22	1.93	0.51
1:A:6:PRO:HD3	1:A:21:GLN:CD	2.31	0.51
1:B:123:GLU:HA	1:B:123:GLU:OE2	2.11	0.51
1:B:112:LEU:HD23	1:B:389:ARG:HA	1.94	0.50
1:B:381:LEU:HD13	1:B:388:PHE:CE2	2.47	0.50
1:B:327:LEU:CD2	1:B:348:LEU:HD23	2.41	0.50
1:B:31:VAL:HG22	1:B:42:ARG:NE	2.26	0.49
1:A:1:MET:H2	1:A:28:SER:HB2	1.77	0.49
1:A:320:ARG:HB3	1:A:320:ARG:NH1	2.28	0.49
1:B:353:ALA:HB1	1:B:358:GLU:OE1	2.13	0.49
1:A:49:ARG:HD3	1:B:30:ARG:HD3	1.94	0.49
1:B:144:LYS:HD3	1:B:148:MET:HE2	1.93	0.49
1:A:179:TYR:CD2	1:A:251:GLU:HG2	2.48	0.49
1:B:72:VAL:HG21	1:B:168:ALA:HA	1.94	0.49
1:B:270:VAL:O	1:B:274:GLU:HG3	2.13	0.49
2:A:400:GDD:H612	5:A:2017:HOH:O	2.12	0.48
1:B:309:HIS:CE1	5:B:2015:HOH:O	2.66	0.48
1:B:265:ALA:HB2	1:B:273:GLN:HG2	1.95	0.48

*Continued on next page...*

*Continued from previous page...*

Atom-1	Atom-2	Interatomic distance (Å)	Clash overlap (Å)
1:A:224:ARG:HD3	1:A:347:GLU:HG3	1.96	0.48
1:B:1:MET:N	1:B:28:SER:H	2.12	0.47
1:B:197:VAL:CG1	1:B:303:ILE:HD12	2.44	0.47
1:A:339:GLU:O	1:A:342:GLN:HG3	2.14	0.47
1:B:156:ALA:HA	1:B:256:LEU:HD21	1.96	0.47
1:B:224:ARG:NH1	1:B:347:GLU:HG3	2.26	0.47
1:A:1:MET:H2	1:A:28:SER:CB	2.27	0.47
1:B:118:ASP:HB3	1:B:121:LEU:HD12	1.97	0.47
1:A:217:ARG:NH1	1:A:220:ARG:HD3	2.30	0.47
1:A:178:GLU:OE1	1:A:307:ASN:ND2	2.48	0.47
1:A:225:ASN:HD22	1:A:248:ASN:HD21	1.61	0.47
1:A:44:ASP:OD2	1:A:46:ALA:HB3	2.15	0.47
1:B:124:ALA:HB2	1:B:381:LEU:HD21	1.97	0.46
1:B:278:LEU:CD1	1:B:300:ILE:HD11	2.44	0.46
1:B:200:LEU:HB3	1:B:246:THR:HG22	1.98	0.46
1:B:124:ALA:HB2	1:B:381:LEU:CD2	2.45	0.46
1:A:358:GLU:HG3	1:A:360:PRO:HD3	1.97	0.46
1:A:9:THR:OG1	1:A:18:HIS:HD2	2.00	0.45
1:B:324:LEU:HA	1:B:348:LEU:HD21	1.98	0.45
1:B:332:HIS:HE1	1:B:360:PRO:O	1.99	0.45
1:A:306:ARG:HB3	1:B:173:PRO:HG2	1.99	0.44
1:B:325:ALA:O	1:B:329:THR:HG23	2.17	0.44
1:A:144:LYS:HD3	1:A:148:MET:CE	2.48	0.44
1:A:107:THR:HG22	1:B:2:ARG:HD2	1.99	0.44
1:B:275:LEU:O	1:B:279:LEU:HG	2.17	0.44
1:B:258:LEU:HD11	1:B:278:LEU:HD21	1.99	0.44
1:A:352:GLY:O	1:A:353:ALA:HB2	2.18	0.44
1:B:372:LEU:HD23	1:B:374:LEU:HD12	1.99	0.44
1:B:97:ARG:HB3	1:B:97:ARG:HE	1.62	0.43
1:A:161:ARG:NH2	1:A:162:TYR:OH	2.52	0.43
1:A:224:ARG:HH21	1:A:347:GLU:HG3	1.83	0.43
1:A:309:HIS:CE1	5:A:2015:HOH:O	2.72	0.43
1:A:58:VAL:HG12	1:A:60:PRO:HD3	2.00	0.43
1:B:224:ARG:HD2	1:B:224:ARG:O	2.19	0.43
1:B:370:SER:C	1:B:372:LEU:H	2.21	0.43
1:B:352:GLY:O	1:B:353:ALA:HB2	2.19	0.42
1:B:356:PRO:O	1:B:358:GLU:N	2.52	0.42
1:A:144:LYS:HD3	1:A:148:MET:HE1	2.00	0.42
1:A:118:ASP:HA	1:A:119:PRO:HD2	1.87	0.42
1:B:278:LEU:HD23	1:B:278:LEU:HA	1.78	0.42
1:A:217:ARG:CZ	1:A:217:ARG:HB3	2.50	0.42

*Continued on next page...*

Continued from previous page...

Atom-1	Atom-2	Interatomic distance (Å)	Clash overlap (Å)
1:A:172:PHE:CE1	1:B:308:PRO:HD2	2.54	0.42
1:B:198:ARG:O	1:B:302:GLN:HA	2.19	0.42
1:A:82:ILE:C	1:A:83:LEU:HD23	2.40	0.42
1:B:57:ILE:HD11	1:B:180:VAL:HG13	2.02	0.42
1:B:55:THR:HA	1:B:162:TYR:O	2.20	0.42
1:A:356:PRO:CD	1:A:357:GLY:HA3	2.50	0.41
1:A:188:LEU:HA	1:A:188:LEU:HD23	1.71	0.41
1:B:370:SER:O	1:B:372:LEU:N	2.49	0.41
1:A:131:PRO:HD2	1:A:132:HIS:CE1	2.56	0.41
1:B:361:PRO:HA	1:B:362:PRO:HD2	1.97	0.41
1:B:327:LEU:HB3	1:B:344:VAL:HG13	2.03	0.41
1:A:45:ASP:O	1:A:49:ARG:HG3	2.20	0.41
1:B:282:TYR:CD1	1:B:288:LEU:HD13	2.51	0.41
1:A:200:LEU:H	1:A:200:LEU:HD23	1.86	0.41
1:A:77:PRO:HD2	1:A:180:VAL:HG11	2.03	0.41
1:B:267:GLY:C	1:B:269:ALA:H	2.24	0.41
1:A:66:LEU:HD11	1:A:95:MET:HB3	2.03	0.41
1:B:390:VAL:HA	1:B:391:PRO:HD3	1.96	0.40
1:A:306:ARG:HA	1:A:306:ARG:HD3	1.96	0.40
1:A:204:LYS:HA	1:A:205:PRO:HD2	1.74	0.40
1:B:355:ALA:CB	1:B:356:PRO:HD3	2.37	0.40
1:B:92:ARG:HA	1:B:95:MET:CE	2.52	0.40

There are no symmetry-related clashes.

## 5.3 Torsion angles [i](#)

### 5.3.1 Protein backbone [i](#)

In the following table, the Percentiles column shows the percent Ramachandran outliers of the chain as a percentile score with respect to all X-ray entries followed by that with respect to entries of similar resolution.

The Analysed column shows the number of residues for which the backbone conformation was analysed, and the total number of residues.

Mol	Chain	Analysed	Favoured	Allowed	Outliers	Percentiles	
1	A	381/391 (97%)	347 (91%)	29 (8%)	5 (1%)	15	44
1	B	378/391 (97%)	347 (92%)	21 (6%)	10 (3%)	7	22
All	All	759/782 (97%)	694 (91%)	50 (7%)	15 (2%)	9	30

All (15) Ramachandran outliers are listed below:

Mol	Chain	Res	Type
1	A	351	ALA
1	B	38	VAL
1	B	356	PRO
1	B	357	GLY
1	A	354	LEU
1	B	32	ARG
1	B	36	PRO
1	B	353	ALA
1	B	371	SER
1	A	290	ASP
1	A	356	PRO
1	B	213	VAL
1	B	345	LEU
1	A	350	ALA
1	B	90	PRO

### 5.3.2 Protein sidechains ⓘ

In the following table, the Percentiles column shows the percent sidechain outliers of the chain as a percentile score with respect to all X-ray entries followed by that with respect to entries of similar resolution.

The Analysed column shows the number of residues for which the sidechain conformation was analysed, and the total number of residues.

Mol	Chain	Analysed	Rotameric	Outliers	Percentiles	
1	A	317/323 (98%)	295 (93%)	22 (7%)	19	48
1	B	314/323 (97%)	287 (91%)	27 (9%)	13	36
All	All	631/646 (98%)	582 (92%)	49 (8%)	16	41

All (49) residues with a non-rotameric sidechain are listed below:

Mol	Chain	Res	Type
1	A	3	LEU
1	A	16	ARG
1	A	17	LEU
1	A	38	VAL
1	A	40	LEU
1	A	42	ARG
1	A	83	LEU
1	A	91	ASP

*Continued on next page...*

*Continued from previous page...*

Mol	Chain	Res	Type
1	A	102	GLU
1	A	123	GLU
1	A	170	ASN
1	A	202	ARG
1	A	215	PHE
1	A	216	ARG
1	A	220	ARG
1	A	221	VAL
1	A	224	ARG
1	A	229	LEU
1	A	248	ASN
1	A	262	LEU
1	A	313	ASN
1	A	345	LEU
1	B	16	ARG
1	B	26	LEU
1	B	38	VAL
1	B	40	LEU
1	B	64	GLU
1	B	67	LYS
1	B	91	ASP
1	B	97	ARG
1	B	102	GLU
1	B	202	ARG
1	B	213	VAL
1	B	214	VAL
1	B	215	PHE
1	B	220	ARG
1	B	240	GLU
1	B	254	MET
1	B	294	LEU
1	B	313	ASN
1	B	316	ASP
1	B	318	HIS
1	B	319	ILE
1	B	324	LEU
1	B	345	LEU
1	B	348	LEU
1	B	354	LEU
1	B	375	GLN
1	B	385	PHE

Some sidechains can be flipped to improve hydrogen bonding and reduce clashes. All (14) such

sidechains are listed below:

Mol	Chain	Res	Type
1	A	18	HIS
1	A	21	GLN
1	A	87	ASN
1	A	170	ASN
1	A	248	ASN
1	A	318	HIS
1	A	332	HIS
1	B	18	HIS
1	B	87	ASN
1	B	230	ASN
1	B	248	ASN
1	B	302	GLN
1	B	309	HIS
1	B	332	HIS

### 5.3.3 RNA [i](#)

There are no RNA molecules in this entry.

## 5.4 Non-standard residues in protein, DNA, RNA chains [i](#)

There are no non-standard protein/DNA/RNA residues in this entry.

## 5.5 Carbohydrates [i](#)

There are no carbohydrates in this entry.

## 5.6 Ligand geometry [i](#)

Of 9 ligands modelled in this entry, 7 are monoatomic - leaving 2 for Mogul analysis.

In the following table, the Counts columns list the number of bonds (or angles) for which Mogul statistics could be retrieved, the number of bonds (or angles) that are observed in the model and the number of bonds (or angles) that are defined in the chemical component dictionary. The Link column lists molecule types, if any, to which the group is linked. The Z score for a bond length (or angle) is the number of standard deviations the observed value is removed from the expected value. A bond length (or angle) with  $|Z| > 2$  is considered an outlier worth inspection. RMSZ is the root-mean-square of all Z scores of the bond lengths (or angles).

Mol	Type	Chain	Res	Link	Bond lengths			Bond angles		
					Counts	RMSZ	# Z  > 2	Counts	RMSZ	# Z  > 2
2	GDD	A	400	3	34,42,42	1.70	2 (5%)	47,65,65	1.68	9 (19%)
2	GDD	B	400	3	34,42,42	1.64	2 (5%)	47,65,65	1.90	14 (29%)

In the following table, the Chirals column lists the number of chiral outliers, the number of chiral centers analysed, the number of these observed in the model and the number defined in the chemical component dictionary. Similar counts are reported in the Torsion and Rings columns. '-' means no outliers of that kind were identified.

Mol	Type	Chain	Res	Link	Chirals	Torsions	Rings
2	GDD	A	400	3	-	0/19/59/59	0/4/4/4
2	GDD	B	400	3	-	0/19/59/59	0/4/4/4

All (4) bond length outliers are listed below:

Mol	Chain	Res	Type	Atoms	Z	Observed(Å)	Ideal(Å)
2	B	400	GDD	O6-C6	4.78	1.36	1.24
2	A	400	GDD	O6-C6	5.12	1.37	1.24
2	A	400	GDD	C2-N2	7.34	1.49	1.34
2	B	400	GDD	C2-N2	7.38	1.49	1.34

All (23) bond angle outliers are listed below:

Mol	Chain	Res	Type	Atoms	Z	Observed(°)	Ideal(°)
2	B	400	GDD	PB-O3A-PA	-4.67	119.62	132.73
2	B	400	GDD	N3-C2-N1	-4.56	120.50	127.44
2	A	400	GDD	N3-C2-N1	-4.10	121.20	127.44
2	A	400	GDD	PB-O3A-PA	-3.73	122.26	132.73
2	B	400	GDD	C1'-N9-C4	-3.40	121.82	126.94
2	A	400	GDD	C5-C6-N1	-3.36	119.00	123.59
2	B	400	GDD	O1B-C11-C21	-3.30	102.24	108.39
2	B	400	GDD	C5-C6-N1	-3.22	119.19	123.59
2	B	400	GDD	C4-C5-N7	-3.02	106.70	109.48
2	A	400	GDD	C4-C5-N7	-2.83	106.88	109.48
2	B	400	GDD	C6-C5-C4	-2.13	118.35	120.90
2	B	400	GDD	O31-C31-C21	-2.07	105.68	110.34
2	B	400	GDD	N2-C2-N1	2.09	120.67	117.20
2	B	400	GDD	O2A-PA-O1A	2.12	124.00	112.53
2	B	400	GDD	O2B-PB-O3B	2.12	124.01	112.53
2	A	400	GDD	C31-C41-C51	2.15	113.94	110.20
2	A	400	GDD	O6A-C61-C51	2.36	119.12	111.33
2	B	400	GDD	C11-O51-C51	2.56	118.71	113.75
2	A	400	GDD	C11-O51-C51	3.05	119.66	113.75

Continued on next page...

*Continued from previous page...*

Mol	Chain	Res	Type	Atoms	Z	Observed( $^{\circ}$ )	Ideal( $^{\circ}$ )
2	B	400	GDD	C31-C41-C51	3.28	115.92	110.20
2	A	400	GDD	O51-C11-O1B	3.29	115.70	111.36
2	A	400	GDD	C6-N1-C2	3.66	121.01	115.94
2	B	400	GDD	C6-N1-C2	3.82	121.24	115.94

There are no chirality outliers.

There are no torsion outliers.

There are no ring outliers.

2 monomers are involved in 2 short contacts:

Mol	Chain	Res	Type	Clashes	Symm-Clashes
2	A	400	GDD	1	0
2	B	400	GDD	1	0

## 5.7 Other polymers [i](#)

There are no such residues in this entry.

## 5.8 Polymer linkage issues [i](#)

There are no chain breaks in this entry.



## 6 Fit of model and data ⓘ

### 6.1 Protein, DNA and RNA chains ⓘ

In the following table, the column labelled ‘#RSRZ> 2’ contains the number (and percentage) of RSRZ outliers, followed by percent RSRZ outliers for the chain as percentile scores relative to all X-ray entries and entries of similar resolution. The OWAB column contains the minimum, median, 95<sup>th</sup> percentile and maximum values of the occupancy-weighted average B-factor per residue. The column labelled ‘Q< 0.9’ lists the number of (and percentage) of residues with an average occupancy less than 0.9.

Mol	Chain	Analysed	<RSRZ>	#RSRZ>2	OWAB(Å <sup>2</sup> )	Q<0.9
1	A	385/391 (98%)	0.01	17 (4%) 38 26	49, 66, 106, 148	3 (0%)
1	B	382/391 (97%)	-0.16	15 (3%) 43 31	45, 66, 111, 156	2 (0%)
All	All	767/782 (98%)	-0.08	32 (4%) 40 28	45, 66, 109, 156	5 (0%)

All (32) RSRZ outliers are listed below:

Mol	Chain	Res	Type	RSRZ
1	A	356	PRO	7.4
1	A	203	TYR	6.4
1	A	205	PRO	5.8
1	B	215	PHE	5.0
1	B	314	LYS	4.8
1	B	212	GLY	4.6
1	B	356	PRO	4.3
1	B	213	VAL	4.1
1	A	215	PHE	3.8
1	B	357	GLY	3.6
1	A	314	LYS	3.5
1	B	354	LEU	3.3
1	A	212	GLY	3.3
1	B	313	ASN	3.3
1	A	214	VAL	2.9
1	B	33	ASP	2.9
1	B	316	ASP	2.8
1	B	358	GLU	2.8
1	B	214	VAL	2.7
1	A	31	VAL	2.6
1	A	213	VAL	2.4
1	A	358	GLU	2.3
1	B	216	ARG	2.2
1	A	294	LEU	2.2

*Continued on next page...*

*Continued from previous page...*

Mol	Chain	Res	Type	RSRZ
1	A	217	ARG	2.2
1	A	354	LEU	2.2
1	B	217	ARG	2.2
1	A	139	LEU	2.2
1	A	355	ALA	2.2
1	A	385	PHE	2.1
1	A	32	ARG	2.0
1	B	315	GLY	2.0

## 6.2 Non-standard residues in protein, DNA, RNA chains [i](#)

There are no non-standard protein/DNA/RNA residues in this entry.

## 6.3 Carbohydrates [i](#)

There are no carbohydrates in this entry.

## 6.4 Ligands [i](#)

In the following table, the Atoms column lists the number of modelled atoms in the group and the number defined in the chemical component dictionary. LLDF column lists the quality of electron density of the group with respect to its neighbouring residues in protein, DNA or RNA chains. The B-factors column lists the minimum, median, 95<sup>th</sup> percentile and maximum values of B factors of atoms in the group. The column labelled 'Q< 0.9' lists the number of atoms with occupancy less than 0.9.

Mol	Type	Chain	Res	Atoms	RSCC	RSR	LLDF	B-factors(Å <sup>2</sup> )	Q<0.9
2	GDD	B	400	39/39	0.97	0.12	-0.71	40,72,114,123	0
4	ZN	B	1392	1/1	0.99	0.14	-0.92	79,79,79,79	0
2	GDD	A	400	39/39	0.97	0.14	-0.95	34,72,133,161	0
4	ZN	B	1394	1/1	1.00	0.10	-	86,86,86,86	0
3	MG	B	401	1/1	0.98	0.18	-	118,118,118,118	0
4	ZN	B	1393	1/1	0.97	0.10	-	117,117,117,117	0
4	ZN	A	1393	1/1	0.95	0.10	-	116,116,116,116	0
4	ZN	A	1392	1/1	0.98	0.11	-	93,93,93,93	0
3	MG	A	401	1/1	0.96	0.10	-	86,86,86,86	0

## 6.5 Other polymers [i](#)

There are no such residues in this entry.