



# wwPDB X-ray Structure Validation Summary Report ⓘ

Feb 19, 2016 – 07:55 PM GMT

PDB ID : 4WV8  
Title : Crystal structure of a recombinant Vatairea macrocarpa seed lectin complexed with lactose  
Authors : Sousa, B.L.; Silva-Filho, J.C.; Kumar, P.; Lyskowski, A.; Bezerra, G.A.; Delatorre, P.; Rocha, B.A.M.; Cunha, R.M.S.; Nagano, C.S.; Gruber, K.; Cavada, B.S.  
Deposited on : 2014-11-04  
Resolution : 1.83 Å(reported)

This is a wwPDB X-ray Structure Validation Summary Report for a publicly released PDB entry.  
We welcome your comments at [validation@mail.wwpdb.org](mailto:validation@mail.wwpdb.org)  
A user guide is available at  
<http://wwpdb.org/validation/2016/XrayValidationReportHelp>  
with specific help available everywhere you see the ⓘ symbol.

---

The following versions of software and data (see [references ⓘ](#)) were used in the production of this report:

MolProbity : 4.02b-467  
Mogul : 1.7.1 (RC1), CSD as537be (2016)  
Xtriage (Phenix) : 1.9-1692  
EDS : rb-20026982  
Percentile statistics : 20151230.v01 (using entries in the PDB archive December 30th 2015)  
Refmac : 5.8.0135  
CCP4 : 6.5.0  
Ideal geometry (proteins) : Engh & Huber (2001)  
Ideal geometry (DNA, RNA) : Parkinson et al. (1996)  
Validation Pipeline (wwPDB-VP) : rb-20026982

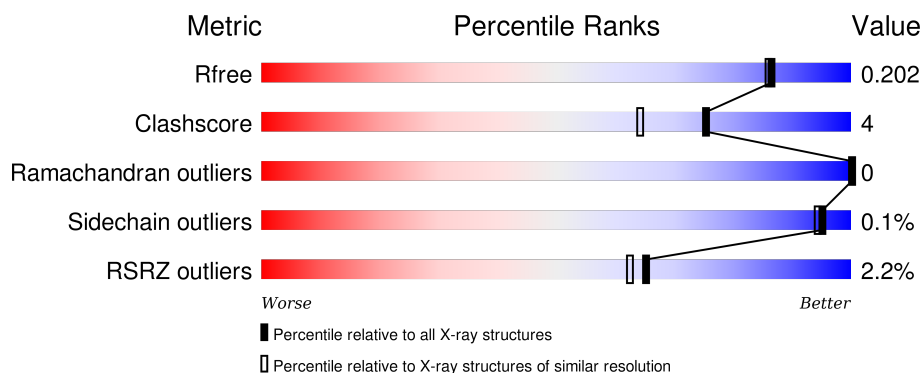
# 1 Overall quality at a glance

The following experimental techniques were used to determine the structure:

## *X-RAY DIFFRACTION*

The reported resolution of this entry is 1.83 Å.

Percentile scores (ranging between 0-100) for global validation metrics of the entry are shown in the following graphic. The table shows the number of entries on which the scores are based.



Metric	Whole archive (#Entries)	Similar resolution (#Entries, resolution range(Å))
$R_{free}$	91344	2634 (1.86-1.82)
Clashscore	102246	2862 (1.86-1.82)
Ramachandran outliers	100387	2831 (1.86-1.82)
Sidechain outliers	100360	2832 (1.86-1.82)
RSRZ outliers	91569	2639 (1.86-1.82)

The table below summarises the geometric issues observed across the polymeric chains and their fit to the electron density. The red, orange, yellow and green segments on the lower bar indicate the fraction of residues that contain outliers for  $\geq 3$ , 2, 1 and 0 types of geometric quality criteria. A grey segment represents the fraction of residues that are not modelled. The numeric value for each fraction is indicated below the corresponding segment, with a dot representing fractions  $\leq 5\%$ . The upper red bar (where present) indicates the fraction of residues that have poor fit to the electron density. The numeric value is given above the bar.

Mol	Chain	Length	Quality of chain
1	A	241	<div> <div> <div></div> <div>93%</div> <div>5% •</div> </div> </div>
1	B	241	<div> <div> <div>3%</div> <div>90%</div> <div>9% •</div> </div> </div>
1	C	241	<div> <div> <div>2%</div> <div>93%</div> <div>5% •</div> </div> </div>
1	D	241	<div> <div> <div>2%</div> <div>92%</div> <div>7% •</div> </div> </div>

The following table lists non-polymeric compounds, carbohydrate monomers and non-standard

residues in protein, DNA, RNA chains that are outliers for geometric or electron-density-fit criteria:

Mol	Type	Chain	Res	Chirality	Geometry	Clashes	Electron density
4	LBT	A	303	-	-	-	X
4	LBT	B	303	-	-	-	X
4	LBT	C	303	-	-	-	X
4	LBT	D	303	-	-	-	X

## 2 Entry composition [i](#)

There are 5 unique types of molecules in this entry. The entry contains 8314 atoms, of which 0 are hydrogens and 0 are deuteriums.

In the tables below, the ZeroOcc column contains the number of atoms modelled with zero occupancy, the AltConf column contains the number of residues with at least one atom in alternate conformation and the Trace column contains the number of residues modelled with at most 2 atoms.

- Molecule 1 is a protein called Seed lectin.

Mol	Chain	Residues	Atoms					ZeroOcc	AltConf	Trace
1	A	236	Total	C	N	O	S	0	8	0
			1879	1194	307	376	2			
1	B	237	Total	C	N	O	S	0	5	0
			1867	1188	305	372	2			
1	C	238	Total	C	N	O	S	0	8	0
			1891	1198	308	383	2			
1	D	239	Total	C	N	O	S	0	6	0
			1886	1195	307	382	2			

There are 4 discrepancies between the modelled and reference sequences:

Chain	Residue	Modelled	Actual	Comment	Reference
A	1	MET	-	initiating methionine	UNP P81371
B	1	MET	-	initiating methionine	UNP P81371
C	1	MET	-	initiating methionine	UNP P81371
D	1	MET	-	initiating methionine	UNP P81371

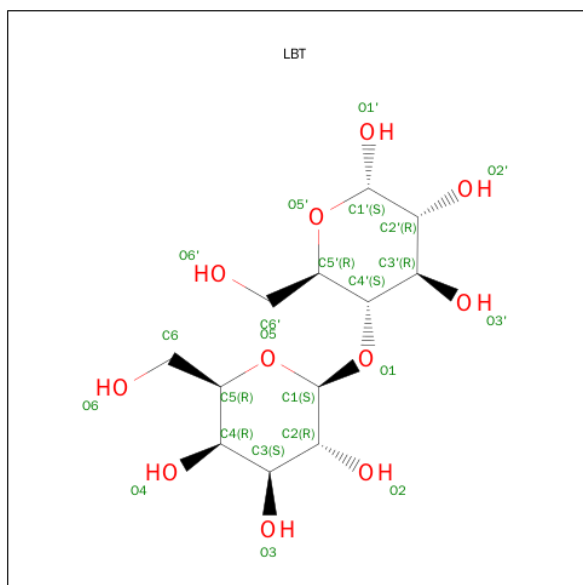
- Molecule 2 is CALCIUM ION (three-letter code: CA) (formula: Ca).

Mol	Chain	Residues	Atoms		ZeroOcc	AltConf
2	B	1	Total	Ca	0	0
			1	1		
2	A	1	Total	Ca	0	0
			1	1		
2	D	1	Total	Ca	0	0
			1	1		
2	C	1	Total	Ca	0	0
			1	1		

- Molecule 3 is MANGANESE (II) ION (three-letter code: MN) (formula: Mn).

Mol	Chain	Residues	Atoms	ZeroOcc	AltConf
3	B	1	Total Mn 1 1	0	0
3	A	1	Total Mn 1 1	0	0
3	D	1	Total Mn 1 1	0	0
3	C	1	Total Mn 1 1	0	0

- Molecule 4 is ALPHA-LACTOSE (three-letter code: LBT) (formula:  $C_{12}H_{22}O_{11}$ ).



Mol	Chain	Residues	Atoms	ZeroOcc	AltConf
4	A	1	Total C O 23 12 11	0	0
4	B	1	Total C O 23 12 11	0	0
4	C	1	Total C O 23 12 11	0	0
4	D	1	Total C O 23 12 11	0	0

- Molecule 5 is water.

Mol	Chain	Residues	Atoms	ZeroOcc	AltConf
5	A	201	Total O 201 201	0	0
5	B	180	Total O 180 180	0	0

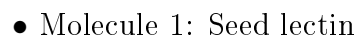
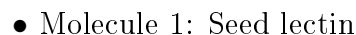
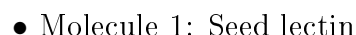
*Continued on next page...*

*Continued from previous page...*

Mol	Chain	Residues	Atoms		ZeroOcc	AltConf
5	C	163	Total 163	O 163	0	0
5	D	147	Total 147	O 147	0	0



- Molecule 1: Seed lectin



## 4 Data and refinement statistics

Property	Value	Source
Space group	C 1 2 1	Depositor
Cell constants a, b, c, $\alpha$ , $\beta$ , $\gamma$	152.64 Å   97.43 Å   78.67 Å 90.00°   94.68°   90.00°	Depositor
Resolution (Å)	82.05 – 1.83 48.71 – 1.83	Depositor EDS
% Data completeness (in resolution range)	99.4 (82.05-1.83) 99.4 (48.71-1.83)	Depositor EDS
$R_{merge}$	(Not available)	Depositor
$R_{sym}$	0.08	Depositor
$\langle I/\sigma(I) \rangle$ <sup>1</sup>	2.74 (at 1.83 Å)	Xtriage
Refinement program	REFMAC 5.8.0071	Depositor
R, $R_{free}$	0.157   ,   0.195 0.166   ,   0.202	Depositor DCC
$R_{free}$ test set	5021 reflections (5.25%)	DCC
Wilson B-factor (Å <sup>2</sup> )	13.9	Xtriage
Anisotropy	0.258	Xtriage
Bulk solvent $k_{sol}$ (e/Å <sup>3</sup> ), $B_{sol}$ (Å <sup>2</sup> )	0.37 , 50.0	EDS
Estimated twinning fraction	No twinning to report.	Xtriage
L-test for twinning <sup>2</sup>	$\langle  L  \rangle = 0.48$ , $\langle L^2 \rangle = 0.31$	Xtriage
Outliers	0 of 100813 reflections	Xtriage
$F_o, F_c$ correlation	0.95	EDS
Total number of atoms	8314	wwPDB-VP
Average B, all atoms (Å <sup>2</sup> )	16.0	wwPDB-VP

Xtriage's analysis on translational NCS is as follows: *The largest off-origin peak in the Patterson function is 4.19% of the height of the origin peak. No significant pseudotranslation is detected.*

<sup>1</sup>Intensities estimated from amplitudes.

<sup>2</sup>Theoretical values of  $\langle |L| \rangle$ ,  $\langle L^2 \rangle$  for acentric reflections are 0.5, 0.375 respectively for untwinned datasets, and 0.333, 0.2 for perfectly twinned datasets.

## 5 Model quality [i](#)

### 5.1 Standard geometry [i](#)

Bond lengths and bond angles in the following residue types are not validated in this section: CA, MN, LBT

The Z score for a bond length (or angle) is the number of standard deviations the observed value is removed from the expected value. A bond length (or angle) with  $|Z| > 5$  is considered an outlier worth inspection. RMSZ is the root-mean-square of all Z scores of the bond lengths (or angles).

Mol	Chain	Bond lengths		Bond angles	
		RMSZ	# Z  >5	RMSZ	# Z  >5
1	A	0.95	0/1927	0.91	2/2628 (0.1%)
1	B	0.91	0/1915	0.91	0/2612
1	C	0.93	0/1938	0.91	1/2643 (0.0%)
1	D	0.89	0/1933	0.89	0/2636
All	All	0.92	0/7713	0.90	3/10519 (0.0%)

Chiral center outliers are detected by calculating the chiral volume of a chiral center and verifying if the center is modelled as a planar moiety or with the opposite hand. A planarity outlier is detected by checking planarity of atoms in a peptide group, atoms in a mainchain group or atoms of a sidechain that are expected to be planar.

Mol	Chain	#Chirality outliers	#Planarity outliers
1	C	0	2

There are no bond length outliers.

All (3) bond angle outliers are listed below:

Mol	Chain	Res	Type	Atoms	Z	Observed(°)	Ideal(°)
1	C	1	MET	O-C-N	-10.46	105.97	122.70
1	A	1	MET	O-C-N	-6.25	112.69	122.70
1	A	1	MET	CA-C-N	6.21	130.86	117.20

There are no chirality outliers.

All (2) planarity outliers are listed below:

Mol	Chain	Res	Type	Group
1	C	1	MET	Mainchain

## 5.2 Too-close contacts ⓘ

In the following table, the Non-H and H(model) columns list the number of non-hydrogen atoms and hydrogen atoms in the chain respectively. The H(added) column lists the number of hydrogen atoms added and optimized by MolProbity. The Clashes column lists the number of clashes within the asymmetric unit, whereas Symm-Clashes lists symmetry related clashes.

Mol	Chain	Non-H	H(model)	H(added)	Clashes	Symm-Clashes
1	A	1879	0	1807	14	0
1	B	1867	0	1799	23	0
1	C	1891	0	1804	13	0
1	D	1886	0	1797	18	0
2	A	1	0	0	0	0
2	B	1	0	0	0	0
2	C	1	0	0	0	0
2	D	1	0	0	0	0
3	A	1	0	0	0	0
3	B	1	0	0	0	0
3	C	1	0	0	0	0
3	D	1	0	0	0	0
4	A	23	0	22	1	0
4	B	23	0	22	0	0
4	C	23	0	22	0	0
4	D	23	0	22	0	0
5	A	201	0	0	2	0
5	B	180	0	0	5	0
5	C	163	0	0	0	0
5	D	147	0	0	2	0
All	All	8314	0	7295	58	0

The all-atom clashscore is defined as the number of clashes found per 1000 atoms (including hydrogen atoms). The all-atom clashscore for this structure is 4.

The worst 5 of 58 close contacts within the same asymmetric unit are listed below, sorted by their clash magnitude.

Atom-1	Atom-2	Interatomic distance (Å)	Clash overlap (Å)
1:B:112:ASN:ND2	1:B:118[B]:ILE:HD11	1.77	0.97
1:B:115:ASN:HD21	1:B:117:SER:HB3	1.36	0.90
1:C:240:SER:O	1:C:241:ASN:HB2	1.69	0.90
1:B:1:MET:HB2	1:C:239:ASP:OD2	1.73	0.89
1:B:115:ASN:ND2	1:B:117:SER:H	1.77	0.82

There are no symmetry-related clashes.

## 5.3 Torsion angles [i](#)

### 5.3.1 Protein backbone [i](#)

In the following table, the Percentiles column shows the percent Ramachandran outliers of the chain as a percentile score with respect to all X-ray entries followed by that with respect to entries of similar resolution.

The Analysed column shows the number of residues for which the backbone conformation was analysed, and the total number of residues.

Mol	Chain	Analysed	Favoured	Allowed	Outliers	Percentiles	
1	A	242/241 (100%)	235 (97%)	7 (3%)	0	100	100
1	B	240/241 (100%)	233 (97%)	7 (3%)	0	100	100
1	C	242/241 (100%)	237 (98%)	5 (2%)	0	100	100
1	D	241/241 (100%)	234 (97%)	7 (3%)	0	100	100
All	All	965/964 (100%)	939 (97%)	26 (3%)	0	100	100

There are no Ramachandran outliers to report.

### 5.3.2 Protein sidechains [i](#)

In the following table, the Percentiles column shows the percent sidechain outliers of the chain as a percentile score with respect to all X-ray entries followed by that with respect to entries of similar resolution.

The Analysed column shows the number of residues for which the sidechain conformation was analysed, and the total number of residues.

Mol	Chain	Analysed	Rotameric	Outliers	Percentiles	
1	A	211/208 (101%)	210 (100%)	1 (0%)	92	89
1	B	209/208 (100%)	209 (100%)	0	100	100
1	C	213/208 (102%)	213 (100%)	0	100	100
1	D	212/208 (102%)	212 (100%)	0	100	100
All	All	845/832 (102%)	844 (100%)	1 (0%)	95	94

All (1) residues with a non-rotameric sidechain are listed below:

Mol	Chain	Res	Type
1	A	1	MET

Some sidechains can be flipped to improve hydrogen bonding and reduce clashes. 5 of 13 such

sidechains are listed below:

Mol	Chain	Res	Type
1	B	142	ASN
1	B	222	HIS
1	D	13	ASN
1	B	115	ASN
1	C	222	HIS

### 5.3.3 RNA [i](#)

There are no RNA molecules in this entry.

## 5.4 Non-standard residues in protein, DNA, RNA chains [i](#)

There are no non-standard protein/DNA/RNA residues in this entry.

## 5.5 Carbohydrates [i](#)

There are no carbohydrates in this entry.

## 5.6 Ligand geometry [i](#)

Of 12 ligands modelled in this entry, 8 are monoatomic - leaving 4 for Mogul analysis.

In the following table, the Counts columns list the number of bonds (or angles) for which Mogul statistics could be retrieved, the number of bonds (or angles) that are observed in the model and the number of bonds (or angles) that are defined in the chemical component dictionary. The Link column lists molecule types, if any, to which the group is linked. The Z score for a bond length (or angle) is the number of standard deviations the observed value is removed from the expected value. A bond length (or angle) with  $|Z| > 2$  is considered an outlier worth inspection. RMSZ is the root-mean-square of all Z scores of the bond lengths (or angles).

Mol	Type	Chain	Res	Link	Bond lengths			Bond angles		
					Counts	RMSZ	$\# Z  > 2$	Counts	RMSZ	$\# Z  > 2$
4	LBT	A	303	-	24,24,24	0.39	0	35,35,35	0.83	1 (2%)
4	LBT	B	303	-	24,24,24	0.86	0	35,35,35	1.70	7 (20%)
4	LBT	C	303	-	24,24,24	0.38	0	35,35,35	0.67	1 (2%)
4	LBT	D	303	-	24,24,24	0.37	0	35,35,35	0.67	1 (2%)

In the following table, the Chirals column lists the number of chiral outliers, the number of chiral centers analysed, the number of these observed in the model and the number defined in the chemical

component dictionary. Similar counts are reported in the Torsion and Rings columns. '-' means no outliers of that kind were identified.

Mol	Type	Chain	Res	Link	Chirals	Torsions	Rings
4	LBT	A	303	-	-	0/8/48/48	0/2/2/2
4	LBT	B	303	-	-	0/8/48/48	0/2/2/2
4	LBT	C	303	-	-	0/8/48/48	0/2/2/2
4	LBT	D	303	-	-	0/8/48/48	0/2/2/2

There are no bond length outliers.

The worst 5 of 10 bond angle outliers are listed below:

Mol	Chain	Res	Type	Atoms	Z	Observed(°)	Ideal(°)
4	D	303	LBT	C1-O1-C4'	-2.33	111.80	118.00
4	A	303	LBT	C1-O1-C4'	-2.33	111.81	118.00
4	C	303	LBT	C1-O1-C4'	-2.33	111.81	118.00
4	B	303	LBT	C1-O5-C5	-2.21	109.41	113.74
4	B	303	LBT	O5-C5-C6	2.85	113.76	106.38

There are no chirality outliers.

There are no torsion outliers.

There are no ring outliers.

1 monomer is involved in 1 short contact:

Mol	Chain	Res	Type	Clashes	Symm-Clashes
4	A	303	LBT	1	0

## 5.7 Other polymers [i](#)

There are no such residues in this entry.

## 5.8 Polymer linkage issues [i](#)

There are no chain breaks in this entry.

## 6 Fit of model and data [i](#)

### 6.1 Protein, DNA and RNA chains [i](#)

In the following table, the column labelled ‘#RSRZ> 2’ contains the number (and percentage) of RSRZ outliers, followed by percent RSRZ outliers for the chain as percentile scores relative to all X-ray entries and entries of similar resolution. The OWAB column contains the minimum, median, 95<sup>th</sup> percentile and maximum values of the occupancy-weighted average B-factor per residue. The column labelled ‘Q< 0.9’ lists the number of (and percentage) of residues with an average occupancy less than 0.9.

Mol	Chain	Analysed	<RSRZ>	#RSRZ>2	OWAB(Å <sup>2</sup> )	Q<0.9
1	A	236/241 (97%)	-0.18	3 (1%) 79 78	8, 11, 27, 46	0
1	B	237/241 (98%)	-0.10	8 (3%) 49 45	8, 13, 32, 59	0
1	C	238/241 (98%)	-0.13	6 (2%) 61 57	9, 14, 33, 55	0
1	D	239/241 (99%)	-0.10	4 (1%) 73 71	9, 15, 34, 67	0
All	All	950/964 (98%)	-0.13	21 (2%) 65 62	8, 13, 32, 67	0

The worst 5 of 21 RSRZ outliers are listed below:

Mol	Chain	Res	Type	RSRZ
1	C	241	ASN	7.7
1	D	114	SER	4.5
1	B	113	ASP	4.2
1	C	1	MET	3.8
1	D	118	ILE	3.6

### 6.2 Non-standard residues in protein, DNA, RNA chains [i](#)

There are no non-standard protein/DNA/RNA residues in this entry.

### 6.3 Carbohydrates [i](#)

There are no carbohydrates in this entry.

### 6.4 Ligands [i](#)

In the following table, the Atoms column lists the number of modelled atoms in the group and the number defined in the chemical component dictionary. LLDF column lists the quality of electron density of the group with respect to its neighbouring residues in protein, DNA or RNA chains. The B-factors column lists the minimum, median, 95<sup>th</sup> percentile and maximum values of B factors

of atoms in the group. The column labelled 'Q< 0.9' lists the number of atoms with occupancy less than 0.9.

Mol	Type	Chain	Res	Atoms	RSCC	RSR	LLDF	B-factors( $\text{\AA}^2$ )	Q<0.9
4	LBT	C	303	23/23	0.72	0.25	6.39	20,20,20,20	0
4	LBT	A	303	23/23	0.79	0.19	4.51	20,20,20,20	0
4	LBT	D	303	23/23	0.79	0.21	4.27	20,20,20,20	0
4	LBT	B	303	23/23	0.82	0.16	2.18	20,20,20,20	0
3	MN	A	302	1/1	1.00	0.08	0.62	20,20,20,20	0
3	MN	D	302	1/1	0.98	0.09	-0.05	24,24,24,24	0
3	MN	B	302	1/1	0.99	0.09	-0.13	21,21,21,21	0
3	MN	C	302	1/1	0.99	0.09	-0.25	23,23,23,23	0
2	CA	B	301	1/1	1.00	0.09	-0.35	10,10,10,10	0
2	CA	D	301	1/1	0.99	0.06	-1.54	12,12,12,12	0
2	CA	C	301	1/1	1.00	0.07	-2.06	14,14,14,14	0
2	CA	A	301	1/1	1.00	0.05	-3.15	8,8,8,8	0

## 6.5 Other polymers [i](#)

There are no such residues in this entry.