



wwPDB X-ray Structure Validation Summary Report ⓘ

Feb 19, 2016 – 08:03 PM GMT

PDB ID : 4WVF
Title : Crystal structure of KPT276 in complex with CRM1-Ran-RanBP1
Authors : Sun, Q.; Chook, Y.
Deposited on : 2014-11-05
Resolution : 1.80 Å(reported)

This is a wwPDB X-ray Structure Validation Summary Report for a publicly released PDB entry.
We welcome your comments at validation@mail.wwpdb.org
A user guide is available at
<http://wwpdb.org/validation/2016/XrayValidationReportHelp>
with specific help available everywhere you see the ⓘ symbol.

The following versions of software and data (see [references ⓘ](#)) were used in the production of this report:

MolProbity : 4.02b-467
Mogul : 1.7.1 (RC1), CSD as537be (2016)
Xtriage (Phenix) : 1.9-1692
EDS : rb-20026982
Percentile statistics : 20151230.v01 (using entries in the PDB archive December 30th 2015)
Refmac : 5.8.0135
CCP4 : 6.5.0
Ideal geometry (proteins) : Engh & Huber (2001)
Ideal geometry (DNA, RNA) : Parkinson et al. (1996)
Validation Pipeline (wwPDB-VP) : rb-20026982

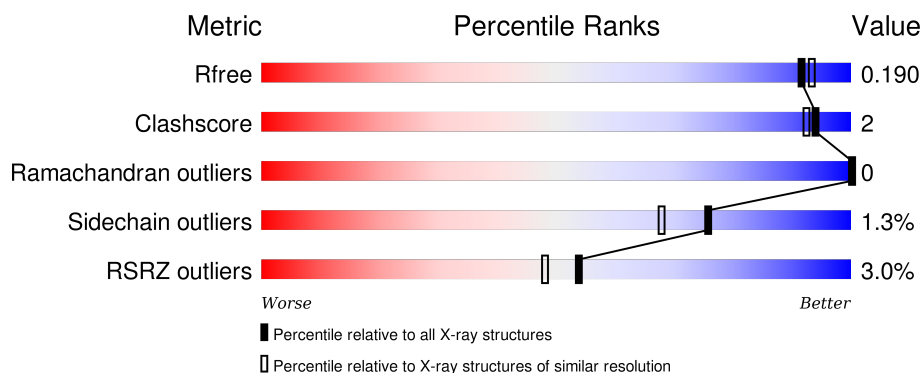
1 Overall quality at a glance

The following experimental techniques were used to determine the structure:

X-RAY DIFFRACTION

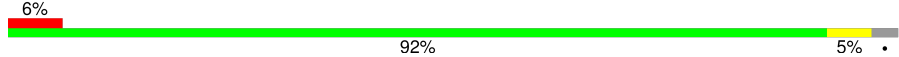

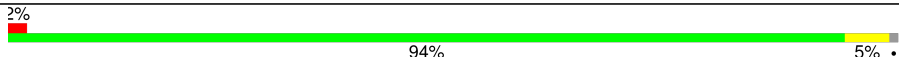
The reported resolution of this entry is 1.80 Å.

Percentile scores (ranging between 0-100) for global validation metrics of the entry are shown in the following graphic. The table shows the number of entries on which the scores are based.



Metric	Whole archive (#Entries)	Similar resolution (#Entries, resolution range(Å))
R_{free}	91344	4533 (1.80-1.80)
Clashscore	102246	5383 (1.80-1.80)
Ramachandran outliers	100387	5320 (1.80-1.80)
Sidechain outliers	100360	5319 (1.80-1.80)
RSRZ outliers	91569	4547 (1.80-1.80)

The table below summarises the geometric issues observed across the polymeric chains and their fit to the electron density. The red, orange, yellow and green segments on the lower bar indicate the fraction of residues that contain outliers for ≥ 3 , 2, 1 and 0 types of geometric quality criteria. A grey segment represents the fraction of residues that are not modelled. The numeric value for each fraction is indicated below the corresponding segment, with a dot representing fractions $\leq 5\%$. The upper red bar (where present) indicates the fraction of residues that have poor fit to the electron density. The numeric value is given above the bar.

Mol	Chain	Length	Quality of chain
1	A	216	
2	B	140	
3	C	1024	

The following table lists non-polymeric compounds, carbohydrate monomers and non-standard residues in protein, DNA, RNA chains that are outliers for geometric or electron-density-fit criteria:

Mol	Type	Chain	Res	Chirality	Geometry	Clashes	Electron density
6	EDO	A	303	-	-	-	X
7	GOL	A	304	-	-	-	X
7	GOL	C	1108	-	-	-	X

2 Entry composition [i](#)

There are 10 unique types of molecules in this entry. The entry contains 12622 atoms, of which 0 are hydrogens and 0 are deuteriums.

In the tables below, the ZeroOcc column contains the number of atoms modelled with zero occupancy, the AltConf column contains the number of residues with at least one atom in alternate conformation and the Trace column contains the number of residues modelled with at most 2 atoms.

- Molecule 1 is a protein called GTP-binding nuclear protein Ran.

Mol	Chain	Residues	Atoms					ZeroOcc	AltConf	Trace
1	A	209	Total	C	N	O	S	0	5	0
			1714	1105	294	308	7			

- Molecule 2 is a protein called Ran-specific GTPase-activating protein 1.

Mol	Chain	Residues	Atoms					ZeroOcc	AltConf	Trace
2	B	130	Total	C	N	O	S	0	1	0
			1075	683	186	201	5			

- Molecule 3 is a protein called Crm1p.

Mol	Chain	Residues	Atoms					ZeroOcc	AltConf	Trace
3	C	1017	Total	C	N	O	S	0	27	0
			8367	5386	1361	1577	43			

There are 42 discrepancies between the modelled and reference sequences:

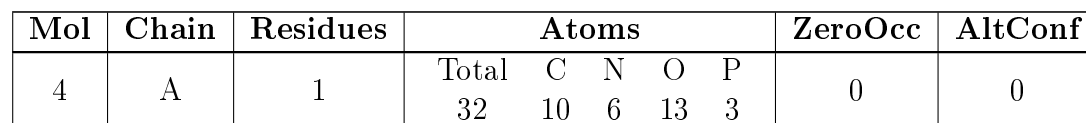
Chain	Residue	Modelled	Actual	Comment	Reference
C	-2	GLY	-	expression tag	UNP W7PTE1
C	-1	GLY	-	expression tag	UNP W7PTE1
C	0	SER	-	expression tag	UNP W7PTE1
C	?	-	VAL	deletion	UNP W7PTE1
C	?	-	GLN	deletion	UNP W7PTE1
C	?	-	ARG	deletion	UNP W7PTE1
C	?	-	LEU	deletion	UNP W7PTE1
C	?	-	PRO	deletion	UNP W7PTE1
C	?	-	ALA	deletion	UNP W7PTE1
C	?	-	THR	deletion	UNP W7PTE1
C	?	-	GLU	deletion	UNP W7PTE1
C	?	-	MET	deletion	UNP W7PTE1
C	?	-	SER	deletion	UNP W7PTE1
C	?	-	PRO	deletion	UNP W7PTE1

Continued on next page...

Continued from previous page...

Chain	Residue	Modelled	Actual	Comment	Reference
C	?	-	LEU	deletion	UNP W7PTE1
C	?	-	ILE	deletion	UNP W7PTE1
C	?	-	GLN	deletion	UNP W7PTE1
C	?	-	LEU	deletion	UNP W7PTE1
C	?	-	SER	deletion	UNP W7PTE1
C	?	-	VAL	deletion	UNP W7PTE1
C	?	-	GLY	deletion	UNP W7PTE1
C	?	-	SER	deletion	UNP W7PTE1
C	?	-	GLN	deletion	UNP W7PTE1
C	?	-	ALA	deletion	UNP W7PTE1
C	?	-	ILE	deletion	UNP W7PTE1
C	?	-	SER	deletion	UNP W7PTE1
C	?	-	THR	deletion	UNP W7PTE1
C	?	-	GLY	deletion	UNP W7PTE1
C	?	-	SER	deletion	UNP W7PTE1
C	?	-	GLY	deletion	UNP W7PTE1
C	?	-	ALA	deletion	UNP W7PTE1
C	?	-	LEU	deletion	UNP W7PTE1
C	?	-	ASN	deletion	UNP W7PTE1
C	?	-	PRO	deletion	UNP W7PTE1
C	?	-	GLU	deletion	UNP W7PTE1
C	?	-	TYR	deletion	UNP W7PTE1
C	?	-	MET	deletion	UNP W7PTE1
C	?	-	LYS	deletion	UNP W7PTE1
C	?	-	ARG	deletion	UNP W7PTE1
C	?	-	PHE	deletion	UNP W7PTE1
C	539	CYS	THR	engineered mutation	UNP W7PTE1
C	1022	CYS	TYR	cloning artifact	UNP W7PTE1

- Molecule 4 is PHOSPHOAMINOPHOSPHONIC ACID-GUANYLATE ESTER (three-letter code: GNP) (formula: C₁₀H₁₇N₆O₁₃P₃).

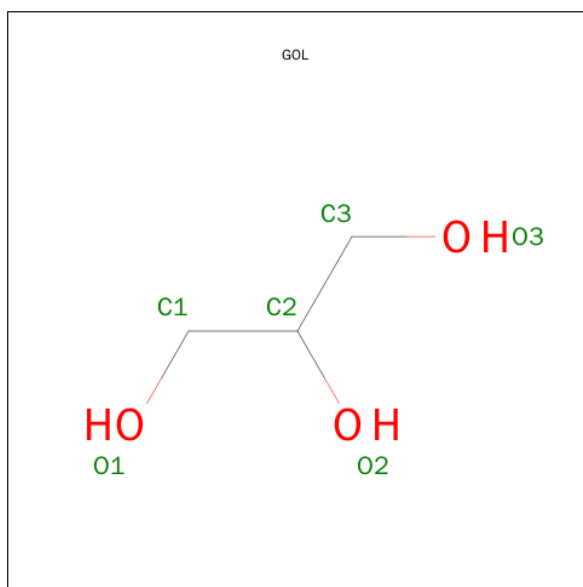


- | Mol | Chain | Residues | Atoms | ZeroOcc | AltConf |
|-----|-------|----------|-----------------|---------|---------|
| 5 | A | 1 | Total Mg
1 1 | 0 | 0 |

-
- The diagram shows the chemical structure of Ethane-1,2-diol (EDO). It consists of two carbon atoms, C1 and C2, connected by a single bond. Each carbon atom is bonded to a hydroxyl group (OH). The oxygen atom of the hydroxyl group attached to C1 is labeled O1, and the oxygen atom of the hydroxyl group attached to C2 is labeled O2. The hydrogen atoms are not explicitly shown, but the OH groups are represented by the letters O and H in red. The carbon atoms are labeled C1 and C2 in green. The entire structure is enclosed in a black rectangular box.

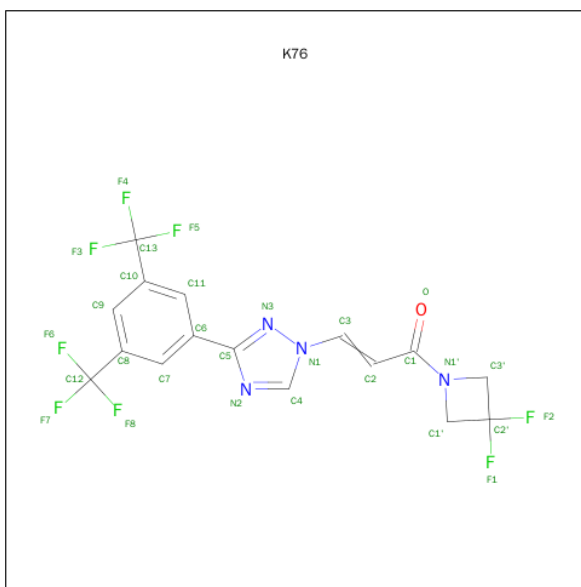
Mol	Chain	Residues	Atoms			ZeroOcc	AltConf
6	A	1	Total	C	O	0	0
			4	2	2		
6	C	1	Total	C	O	0	0
			4	2	2		

- Molecule 7 is GLYCEROL (three-letter code: GOL) (formula: $C_3H_8O_3$).



Mol	Chain	Residues	Atoms			ZeroOcc	AltConf
7	A	1	Total	C	O	0	0
			6	3	3		
7	C	1	Total	C	O	0	0
			6	3	3		
7	C	1	Total	C	O	0	0
			6	3	3		
7	C	1	Total	C	O	0	0
			6	3	3		

- Molecule 8 is (2E)-3-{3-[3,5-bis(trifluoromethyl)phenyl]-1H-1,2,4-triazol-1-yl}-1-(3,3-difluorooazetidin-1-yl)prop-2-en-1-one (three-letter code: K76) (formula: $C_{16}H_{10}F_8N_4O$).



Mol	Chain	Residues	Atoms					ZeroOcc	AltConf
8	C	1	Total	C	F	N	O	0	0
			29	16	8	4	1		

- Molecule 9 is CHLORIDE ION (three-letter code: CL) (formula: Cl).

Mol	Chain	Residues	Atoms		ZeroOcc	AltConf
9	C	3	Total	Cl	0	0
			3	3		

- Molecule 10 is water.

Mol	Chain	Residues	Atoms		ZeroOcc	AltConf
10	A	220	Total	O	0	0
			220	220		
10	B	74	Total	O	0	0
			74	74		
10	C	1075	Total	O	0	0
			1075	1075		

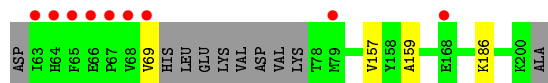
3 Residue-property plots [i](#)

These plots are drawn for all protein, RNA and DNA chains in the entry. The first graphic for a chain summarises the proportions of errors displayed in the second graphic. The second graphic shows the sequence view annotated by issues in geometry and electron density. Residues are color-coded according to the number of geometric quality criteria for which they contain at least one outlier: green = 0, yellow = 1, orange = 2 and red = 3 or more. A red dot above a residue indicates a poor fit to the electron density ($RSRZ > 2$). Stretches of 2 or more consecutive residues without any outlier are shown as a green connector. Residues present in the sample, but not in the model, are shown in grey.

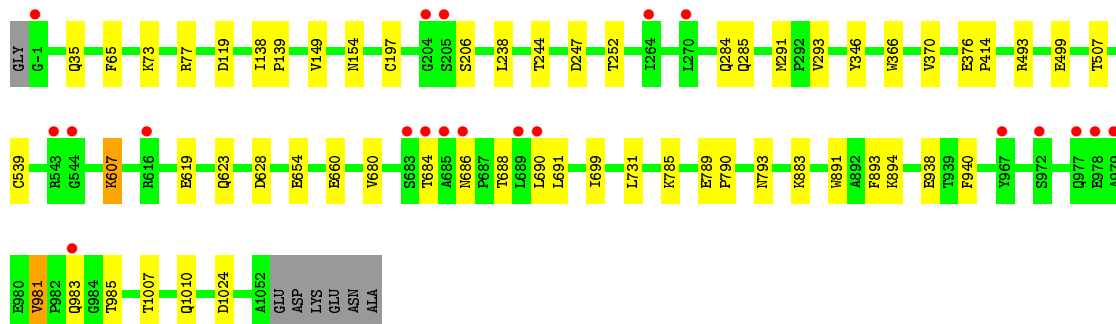
- Molecule 1: GTP-binding nuclear protein Ran



- Molecule 2: Ran-specific GTPase-activating protein 1



- Molecule 3: Crm1p



4 Data and refinement statistics

Property	Value	Source
Space group	P 43 21 2	Depositor
Cell constants a, b, c, α , β , γ	105.91Å 105.91Å 305.53Å 90.00° 90.00° 90.00°	Depositor
Resolution (Å)	50.00 – 1.80 46.80 – 1.80	Depositor EDS
% Data completeness (in resolution range)	99.1 (50.00-1.80) 99.1 (46.80-1.80)	Depositor EDS
R_{merge}	0.07	Depositor
R_{sym}	(Not available)	Depositor
$\langle I/\sigma(I) \rangle$ ¹	1.18 (at 1.81Å)	Xtriage
Refinement program	REFMAC 5.8.0049	Depositor
R, R_{free}	0.137 , 0.183 0.145 , 0.190	Depositor DCC
R_{free} test set	7993 reflections (5.28%)	DCC
Wilson B-factor (Å ²)	35.0	Xtriage
Anisotropy	0.242	Xtriage
Bulk solvent k_{sol} (e/Å ³), B_{sol} (Å ²)	0.33 , 49.3	EDS
Estimated twinning fraction	No twinning to report.	Xtriage
L-test for twinning ²	$\langle L \rangle = 0.49$, $\langle L^2 \rangle = 0.32$	Xtriage
Outliers	0 of 159437 reflections	Xtriage
F_o, F_c correlation	0.98	EDS
Total number of atoms	12622	wwPDB-VP
Average B, all atoms (Å ²)	46.0	wwPDB-VP

Xtriage's analysis on translational NCS is as follows: *The largest off-origin peak in the Patterson function is 4.43% of the height of the origin peak. No significant pseudotranslation is detected.*

¹Intensities estimated from amplitudes.

²Theoretical values of $\langle |L| \rangle$, $\langle L^2 \rangle$ for acentric reflections are 0.5, 0.375 respectively for untwinned datasets, and 0.333, 0.2 for perfectly twinned datasets.

5 Model quality [i](#)

5.1 Standard geometry [i](#)

Bond lengths and bond angles in the following residue types are not validated in this section: GOL, GNP, CL, MG, EDO, K76

The Z score for a bond length (or angle) is the number of standard deviations the observed value is removed from the expected value. A bond length (or angle) with $|Z| > 5$ is considered an outlier worth inspection. RMSZ is the root-mean-square of all Z scores of the bond lengths (or angles).

Mol	Chain	Bond lengths		Bond angles	
		RMSZ	# Z >5	RMSZ	# Z >5
1	A	0.41	0/1764	0.61	0/2388
2	B	0.37	0/1094	0.59	0/1462
3	C	0.40	1/8595 (0.0%)	0.55	2/11645 (0.0%)
All	All	0.40	1/11453 (0.0%)	0.56	2/15495 (0.0%)

All (1) bond length outliers are listed below:

Mol	Chain	Res	Type	Atoms	Z	Observed(Å)	Ideal(Å)
3	C	414	PRO	N-CD	5.28	1.55	1.47

All (2) bond angle outliers are listed below:

Mol	Chain	Res	Type	Atoms	Z	Observed(°)	Ideal(°)
3	C	376	GLU	C-N-CD	5.28	139.49	128.40
3	C	893	PHE	CB-CA-C	-5.18	100.03	110.40

There are no chirality outliers.

There are no planarity outliers.

5.2 Too-close contacts [i](#)

In the following table, the Non-H and H(model) columns list the number of non-hydrogen atoms and hydrogen atoms in the chain respectively. The H(added) column lists the number of hydrogen atoms added and optimized by MolProbity. The Clashes column lists the number of clashes within the asymmetric unit, whereas Symm-Clashes lists symmetry related clashes.

Mol	Chain	Non-H	H(model)	H(added)	Clashes	Symm-Clashes
1	A	1714	0	1724	11	0
2	B	1075	0	1070	2	0

Continued on next page...

Continued from previous page...

Mol	Chain	Non-H	H(model)	H(added)	Clashes	Symm-Clashes
3	C	8367	0	8492	30	0
4	A	32	0	13	0	0
5	A	1	0	0	0	0
6	A	4	0	6	0	0
6	C	4	0	6	0	0
7	A	6	0	8	0	0
7	C	18	0	24	1	0
8	C	29	0	9	0	0
9	C	3	0	0	0	0
10	A	220	0	0	1	0
10	B	74	0	0	1	0
10	C	1075	0	0	7	0
All	All	12622	0	11352	41	0

The all-atom clashscore is defined as the number of clashes found per 1000 atoms (including hydrogen atoms). The all-atom clashscore for this structure is 2.

The worst 5 of 41 close contacts within the same asymmetric unit are listed below, sorted by their clash magnitude.

Atom-1	Atom-2	Interatomic distance (Å)	Clash overlap (Å)
1:A:8:GLN:HG2	1:A:9:VAL:H	1.49	0.77
3:C:686:ASN:HB3	3:C:688:THR:HG22	1.70	0.73
3:C:293[B]:VAL:HG12	3:C:346:TYR:CE2	2.35	0.62
1:A:8:GLN:CG	1:A:9:VAL:H	2.13	0.60
3:C:1007:THR:H	3:C:1010:GLN:HE21	1.50	0.59

There are no symmetry-related clashes.

5.3 Torsion angles [i](#)

5.3.1 Protein backbone [i](#)

In the following table, the Percentiles column shows the percent Ramachandran outliers of the chain as a percentile score with respect to all X-ray entries followed by that with respect to entries of similar resolution.

The Analysed column shows the number of residues for which the backbone conformation was analysed, and the total number of residues.

Mol	Chain	Analysed	Favoured	Allowed	Outliers	Percentiles	
1	A	212/216 (98%)	206 (97%)	6 (3%)	0	100	100
2	B	127/140 (91%)	117 (92%)	10 (8%)	0	100	100
3	C	1043/1024 (102%)	1029 (99%)	14 (1%)	0	100	100
All	All	1382/1380 (100%)	1352 (98%)	30 (2%)	0	100	100

There are no Ramachandran outliers to report.

5.3.2 Protein sidechains ⓘ

In the following table, the Percentiles column shows the percent sidechain outliers of the chain as a percentile score with respect to all X-ray entries followed by that with respect to entries of similar resolution.

The Analysed column shows the number of residues for which the sidechain conformation was analysed, and the total number of residues.

Mol	Chain	Analysed	Rotameric	Outliers	Percentiles	
1	A	186/185 (100%)	184 (99%)	2 (1%)	80	74
2	B	113/121 (93%)	111 (98%)	2 (2%)	66	54
3	C	957/934 (102%)	944 (99%)	13 (1%)	74	65
All	All	1256/1240 (101%)	1239 (99%)	17 (1%)	76	65

5 of 17 residues with a non-rotameric sidechain are listed below:

Mol	Chain	Res	Type
3	C	539	CYS
3	C	607	LYS
3	C	883	LYS
3	C	291	MET
3	C	940	PHE

Some sidechains can be flipped to improve hydrogen bonding and reduce clashes. 5 of 6 such sidechains are listed below:

Mol	Chain	Res	Type
3	C	203	GLN
3	C	1010	GLN
3	C	434	ASN
1	A	196	GLN
3	C	983	GLN

5.3.3 RNA ⓘ

There are no RNA molecules in this entry.

5.4 Non-standard residues in protein, DNA, RNA chains ⓘ

There are no non-standard protein/DNA/RNA residues in this entry.

5.5 Carbohydrates ⓘ

There are no carbohydrates in this entry.

5.6 Ligand geometry ⓘ

Of 12 ligands modelled in this entry, 4 are monoatomic - leaving 8 for Mogul analysis.

In the following table, the Counts columns list the number of bonds (or angles) for which Mogul statistics could be retrieved, the number of bonds (or angles) that are observed in the model and the number of bonds (or angles) that are defined in the chemical component dictionary. The Link column lists molecule types, if any, to which the group is linked. The Z score for a bond length (or angle) is the number of standard deviations the observed value is removed from the expected value. A bond length (or angle) with $|Z| > 2$ is considered an outlier worth inspection. RMSZ is the root-mean-square of all Z scores of the bond lengths (or angles).

Mol	Type	Chain	Res	Link	Bond lengths			Bond angles		
					Counts	RMSZ	$\# Z > 2$	Counts	RMSZ	$\# Z > 2$
4	GNP	A	301	5	29,34,34	1.62	6 (20%)	29,54,54	1.90	7 (24%)
6	EDO	A	303	-	3,3,3	0.50	0	2,2,2	0.23	0
7	GOL	A	304	-	5,5,5	0.83	0	5,5,5	0.95	0
8	K76	C	1101	3	26,31,31	2.51	4 (15%)	33,49,49	1.93	6 (18%)
7	GOL	C	1102	-	5,5,5	0.40	0	5,5,5	0.38	0
7	GOL	C	1103	-	5,5,5	0.26	0	5,5,5	0.13	0
6	EDO	C	1104	-	3,3,3	0.66	0	2,2,2	0.23	0
7	GOL	C	1108	-	5,5,5	0.25	0	5,5,5	0.26	0

In the following table, the Chirals column lists the number of chiral outliers, the number of chiral centers analysed, the number of these observed in the model and the number defined in the chemical component dictionary. Similar counts are reported in the Torsion and Rings columns. '-' means no outliers of that kind were identified.

Mol	Type	Chain	Res	Link	Chirals	Torsions	Rings
4	GNP	A	301	5	-	0/13/38/38	0/3/3/3
6	EDO	A	303	-	-	0/1/1/1	0/0/0/0

Continued on next page...

Continued from previous page...

Mol	Type	Chain	Res	Link	Chirals	Torsions	Rings
7	GOL	A	304	-	-	0/4/4/4	0/0/0/0
8	K76	C	1101	3	-	0/21/35/35	0/3/3/3
7	GOL	C	1102	-	-	0/4/4/4	0/0/0/0
7	GOL	C	1103	-	-	0/4/4/4	0/0/0/0
6	EDO	C	1104	-	-	0/1/1/1	0/0/0/0
7	GOL	C	1108	-	-	0/4/4/4	0/0/0/0

The worst 5 of 10 bond length outliers are listed below:

Mol	Chain	Res	Type	Atoms	Z	Observed(Å)	Ideal(Å)
8	C	1101	K76	F2-C2'	-4.39	1.32	1.38
8	C	1101	K76	F1-C2'	-4.23	1.32	1.38
8	C	1101	K76	C2-C1	2.22	1.51	1.48
4	A	301	GNP	PB-O1B	2.22	1.48	1.46
4	A	301	GNP	PB-N3B	2.88	1.71	1.63

The worst 5 of 13 bond angle outliers are listed below:

Mol	Chain	Res	Type	Atoms	Z	Observed(°)	Ideal(°)
8	C	1101	K76	N3-C5-N2	-6.98	108.81	114.83
4	A	301	GNP	C5-C6-N1	-4.14	118.11	123.52
4	A	301	GNP	C6-C5-C4	-3.89	116.41	120.86
8	C	1101	K76	C3-C2-C1	-3.51	112.45	120.53
4	A	301	GNP	N3-C2-N1	-3.17	123.24	127.56

There are no chirality outliers.

There are no torsion outliers.

There are no ring outliers.

1 monomer is involved in 1 short contact:

Mol	Chain	Res	Type	Clashes	Symm-Clashes
7	C	1103	GOL	1	0

5.7 Other polymers ⓘ

There are no such residues in this entry.

5.8 Polymer linkage issues ⓘ

There are no chain breaks in this entry.

6 Fit of model and data [i](#)

6.1 Protein, DNA and RNA chains [i](#)

In the following table, the column labelled ‘#RSRZ> 2’ contains the number (and percentage) of RSRZ outliers, followed by percent RSRZ outliers for the chain as percentile scores relative to all X-ray entries and entries of similar resolution. The OWAB column contains the minimum, median, 95th percentile and maximum values of the occupancy-weighted average B-factor per residue. The column labelled ‘Q< 0.9’ lists the number of (and percentage) of residues with an average occupancy less than 0.9.

Mol	Chain	Analysed	<RSRZ>	#RSRZ>2	OWAB(Å ²)	Q<0.9
1	A	209/216 (96%)	-0.24	12 (5%) 27 22	27, 38, 89, 101	0
2	B	130/140 (92%)	-0.32	9 (6%) 20 16	39, 50, 85, 98	0
3	C	1017/1024 (99%)	-0.55	20 (1%) 68 64	27, 40, 71, 138	0
All	All	1356/1380 (98%)	-0.48	41 (3%) 54 48	27, 42, 75, 138	0

The worst 5 of 41 RSRZ outliers are listed below:

Mol	Chain	Res	Type	RSRZ
2	B	63	ILE	6.7
1	A	197	TYR	6.1
2	B	79	MET	6.0
2	B	64	HIS	5.9
2	B	69	VAL	5.8

6.2 Non-standard residues in protein, DNA, RNA chains [i](#)

There are no non-standard protein/DNA/RNA residues in this entry.

6.3 Carbohydrates [i](#)

There are no carbohydrates in this entry.

6.4 Ligands [i](#)

In the following table, the Atoms column lists the number of modelled atoms in the group and the number defined in the chemical component dictionary. LLDF column lists the quality of electron density of the group with respect to its neighbouring residues in protein, DNA or RNA chains. The B-factors column lists the minimum, median, 95th percentile and maximum values of B factors

of atoms in the group. The column labelled 'Q< 0.9' lists the number of atoms with occupancy less than 0.9.

Mol	Type	Chain	Res	Atoms	RSCC	RSR	LLDF	B-factors(\AA^2)	Q<0.9
7	GOL	C	1108	6/6	0.95	0.27	9.25	53,54,54,60	0
6	EDO	A	303	4/4	0.95	0.21	5.12	56,60,66,72	0
7	GOL	A	304	6/6	0.88	0.22	3.87	41,47,51,52	0
6	EDO	C	1104	4/4	0.83	0.20	1.64	58,73,81,87	0
8	K76	C	1101	29/29	0.97	0.14	1.57	42,55,105,123	0
4	GNP	A	301	32/32	0.99	0.06	-0.48	29,34,37,40	0
9	CL	C	1107	1/1	0.98	0.06	-0.68	81,81,81,81	0
9	CL	C	1106	1/1	0.99	0.06	-1.70	63,63,63,63	0
9	CL	C	1105	1/1	0.97	0.03	-1.73	74,74,74,74	0
5	MG	A	302	1/1	0.99	0.03	-2.30	33,33,33,33	0
7	GOL	C	1103	6/6	0.96	0.08	-	49,55,65,71	0
7	GOL	C	1102	6/6	0.84	0.25	-	74,83,92,109	0

6.5 Other polymers [i](#)

There are no such residues in this entry.