



Full wwPDB X-ray Structure Validation Report ⓘ

Jan 31, 2016 – 11:28 PM GMT

PDB ID : 1X8U
Title : Crystal structure of Siderocalin (NGAL, Lipocalin 2) complexed with Carboxymycobactin T
Authors : Holmes, M.A.; Paulsene, W.; Jide, X.; Ratledge, C.; Strong, R.K.
Deposited on : 2004-08-18
Resolution : 2.20 Å(reported)

This is a Full wwPDB X-ray Structure Validation Report for a publicly released PDB entry.

We welcome your comments at validation@mail.wwpdb.org

A user guide is available at

<http://wwpdb.org/validation/2016/XrayValidationReportHelp>

with specific help available everywhere you see the ⓘ symbol.

The following versions of software and data (see [references ⓘ](#)) were used in the production of this report:

MolProbity : 4.02b-467
Mogul : 1.7 (RC4), CSD as536be (2015)
Xtriage (Phenix) : **NOT EXECUTED**
EDS : **NOT EXECUTED**
Percentile statistics : 20151230.v01 (using entries in the PDB archive December 30th 2015)
Ideal geometry (proteins) : Engh & Huber (2001)
Ideal geometry (DNA, RNA) : Parkinson et al. (1996)
Validation Pipeline (wwPDB-VP) : trunk26865

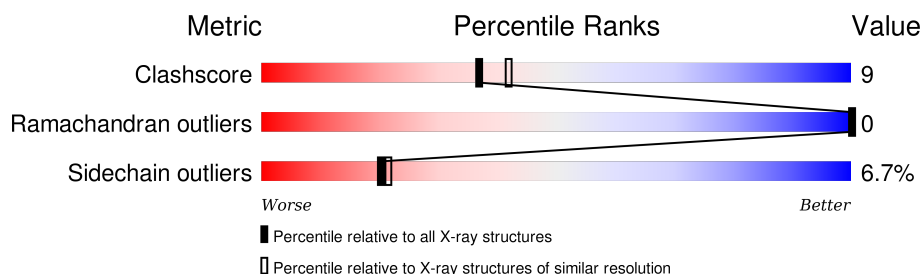
1 Overall quality at a glance

The following experimental techniques were used to determine the structure:

X-RAY DIFFRACTION

The reported resolution of this entry is 2.20 Å.

Percentile scores (ranging between 0-100) for global validation metrics of the entry are shown in the following graphic. The table shows the number of entries on which the scores are based.



Metric	Whole archive (#Entries)	Similar resolution (#Entries, resolution range(Å))
Clashscore	102246	4477 (2.20-2.20)
Ramachandran outliers	100387	4404 (2.20-2.20)
Sidechain outliers	100360	4405 (2.20-2.20)

The table below summarises the geometric issues observed across the polymeric chains and their fit to the electron density. The red, orange, yellow and green segments on the lower bar indicate the fraction of residues that contain outliers for ≥ 3 , 2, 1 and 0 types of geometric quality criteria. A grey segment represents the fraction of residues that are not modelled. The numeric value for each fraction is indicated below the corresponding segment, with a dot representing fractions $\leq 5\%$. The upper red bar (where present) indicates the fraction of residues that have poor fit to the electron density. The numeric value is given above the bar.

Note EDS was not executed.

Mol	Chain	Length	Quality of chain
1	A	178	
1	B	178	
1	C	178	

The following table lists non-polymeric compounds, carbohydrate monomers and non-standard residues in protein, DNA, RNA chains that are outliers for geometric or electron-density-fit criteria:

Mol	Type	Chain	Res	Chirality	Geometry	Clashes	Electron density
2	CM2	A	200	X	-	-	-

Continued on next page...

Continued from previous page...

Mol	Type	Chain	Res	Chirality	Geometry	Clashes	Electron density
2	CM2	B	200	X	-	-	-
2	CM2	C	200	X	-	-	-

2 Entry composition i

There are 3 unique types of molecules in this entry. The entry contains 4374 atoms, of which 0 are hydrogens and 0 are deuteriums.

In the tables below, the ZeroOcc column contains the number of atoms modelled with zero occupancy, the AltConf column contains the number of residues with at least one atom in alternate conformation and the Trace column contains the number of residues modelled with at most 2 atoms.

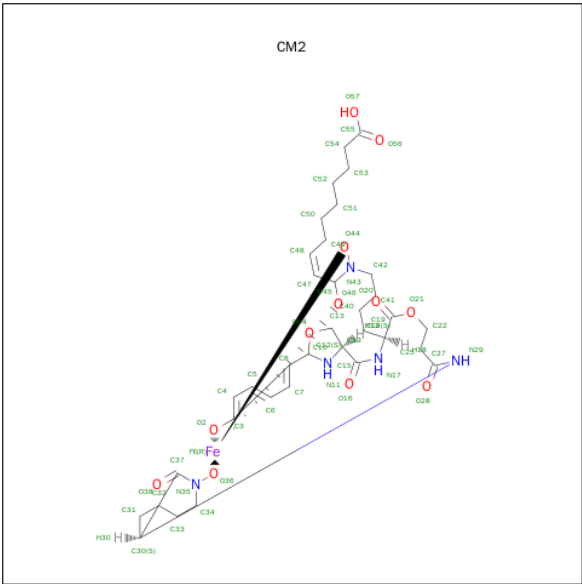
- Molecule 1 is a protein called Neutrophil gelatinase-associated lipocalin.

Mol	Chain	Residues	Atoms					ZeroOcc	AltConf	Trace
1	A	175	Total	C	N	O	S	0	0	0
			1388	903	228	253	4			
1	B	169	Total	C	N	O	S	0	0	0
			1332	871	218	239	4			
1	C	173	Total	C	N	O	S	0	0	0
			1390	903	231	252	4			

There are 3 discrepancies between the modelled and reference sequences:

Chain	Residue	Modelled	Actual	Comment	Reference
A	87	SER	CYS	ENGINEERED	UNP P80188
B	87	SER	CYS	ENGINEERED	UNP P80188
C	87	SER	CYS	ENGINEERED	UNP P80188

- Molecule 2 is CARBOXYMYCOBACTIN T (three-letter code: CM2) (formula: C₃₅H₄₉FeN₅O₁₂).



Mol	Chain	Residues	Atoms					ZeroOcc	AltConf
2	A	1	Total	C	Fe	N	O	0	0
			53	35	1	5	12		
2	B	1	Total	C	Fe	N	O	0	0
			53	35	1	5	12		
2	C	1	Total	C	Fe	N	O	0	0
			53	35	1	5	12		

- Molecule 3 is water.


Mol	Chain	Residues	Atoms		ZeroOcc	AltConf
3	A	37	Total	O	0	0
			37	37		
3	B	6	Total	O	0	0
			6	6		
3	C	62	Total	O	0	0
			62	62		

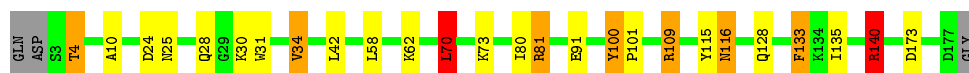
3 Residue-property plots [i](#)

These plots are drawn for all protein, RNA and DNA chains in the entry. The first graphic for a chain summarises the proportions of errors displayed in the second graphic. The second graphic shows the sequence view annotated by issues in geometry and electron density. Residues are color-coded according to the number of geometric quality criteria for which they contain at least one outlier: green = 0, yellow = 1, orange = 2 and red = 3 or more. A red dot above a residue indicates a poor fit to the electron density ($RSRZ > 2$). Stretches of 2 or more consecutive residues without any outlier are shown as a green connector. Residues present in the sample, but not in the model, are shown in grey.

Note EDS was not executed.

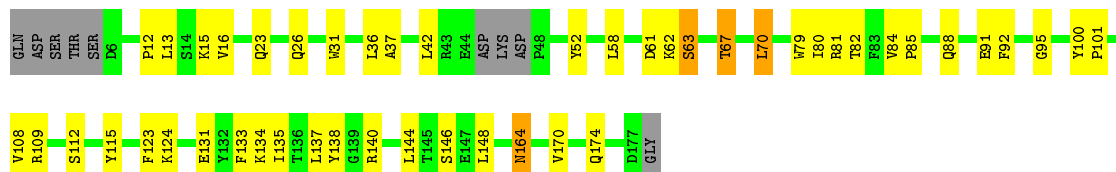
- Molecule 1: Neutrophil gelatinase-associated lipocalin

Chain A: 




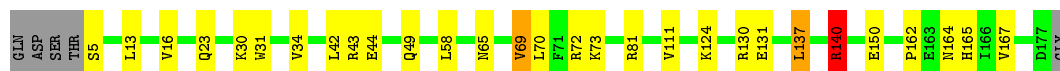
- Molecule 1: Neutrophil gelatinase-associated lipocalin

Chain B: 



- Molecule 1: Neutrophil gelatinase-associated lipocalin

Chain C: 



4 Data and refinement statistics

Xtriage (Phenix) and EDS were not executed - this section will therefore be incomplete.

Property	Value	Source
Space group	P 41 21 2	Depositor
Cell constants a, b, c, α , β , γ	114.80Å 114.80Å 119.10Å 90.00° 90.00° 90.00°	Depositor
Resolution (Å)	20.00 – 2.20	Depositor
% Data completeness (in resolution range)	(Not available) (20.00-2.20)	Depositor
R_{merge}	(Not available)	Depositor
R_{sym}	0.07	Depositor
Refinement program	CNS	Depositor
R, R_{free}	0.220 , 0.253	Depositor
Estimated twinning fraction	No twinning to report.	Xtriage
Total number of atoms	4374	wwPDB-VP
Average B, all atoms (Å ²)	36.0	wwPDB-VP

5 Model quality ⓘ

5.1 Standard geometry ⓘ

Bond lengths and bond angles in the following residue types are not validated in this section: CM2

The Z score for a bond length (or angle) is the number of standard deviations the observed value is removed from the expected value. A bond length (or angle) with $|Z| > 5$ is considered an outlier worth inspection. RMSZ is the root-mean-square of all Z scores of the bond lengths (or angles).

Mol	Chain	Bond lengths		Bond angles	
		RMSZ	$\# Z > 5$	RMSZ	$\# Z > 5$
1	A	1.16	2/1425 (0.1%)	1.20	10/1934 (0.5%)
1	B	0.86	0/1368	0.90	0/1855
1	C	1.29	3/1427 (0.2%)	1.10	3/1934 (0.2%)
All	All	1.12	5/4220 (0.1%)	1.08	13/5723 (0.2%)

All (5) bond length outliers are listed below:

Mol	Chain	Res	Type	Atoms	Z	Observed(Å)	Ideal(Å)
1	C	16	VAL	CB-CG2	6.75	1.67	1.52
1	C	111	VAL	CB-CG1	6.46	1.66	1.52
1	A	133	PHE	CE1-CZ	6.26	1.49	1.37
1	C	150	GLU	CD-OE1	5.99	1.32	1.25
1	A	34	VAL	CA-CB	5.29	1.65	1.54

All (13) bond angle outliers are listed below:

Mol	Chain	Res	Type	Atoms	Z	Observed(°)	Ideal(°)
1	A	140	ARG	NE-CZ-NH2	-18.19	111.21	120.30
1	A	140	ARG	NE-CZ-NH1	17.43	129.01	120.30
1	C	140	ARG	NE-CZ-NH1	11.38	125.99	120.30
1	C	140	ARG	NE-CZ-NH2	-9.35	115.63	120.30
1	A	140	ARG	CD-NE-CZ	9.29	136.61	123.60
1	A	140	ARG	CG-CD-NE	-7.43	96.20	111.80
1	A	70	LEU	CA-CB-CG	6.72	130.76	115.30
1	A	81	ARG	NE-CZ-NH1	5.98	123.29	120.30
1	C	140	ARG	CD-NE-CZ	5.87	131.81	123.60
1	A	140	ARG	CB-CG-CD	5.70	126.42	111.60
1	A	81	ARG	NE-CZ-NH2	-5.41	117.59	120.30
1	A	173	ASP	CB-CG-OD1	-5.39	113.45	118.30
1	A	42	LEU	CA-CB-CG	5.08	126.98	115.30

There are no chirality outliers.

There are no planarity outliers.

5.2 Too-close contacts

In the following table, the Non-H and H(model) columns list the number of non-hydrogen atoms and hydrogen atoms in the chain respectively. The H(added) column lists the number of hydrogen atoms added and optimized by MolProbity. The Clashes column lists the number of clashes within the asymmetric unit, whereas Symm-Clashes lists symmetry related clashes.

Mol	Chain	Non-H	H(model)	H(added)	Clashes	Symm-Clashes
1	A	1388	0	1359	23	0
1	B	1332	0	1302	33	0
1	C	1390	0	1373	17	0
2	A	53	0	39	7	0
2	B	53	0	41	3	0
2	C	53	0	41	5	0
3	A	37	0	0	0	0
3	B	6	0	0	0	0
3	C	62	0	0	0	0
All	All	4374	0	4155	79	0

The all-atom clashscore is defined as the number of clashes found per 1000 atoms (including hydrogen atoms). The all-atom clashscore for this structure is 9.

All (79) close contacts within the same asymmetric unit are listed below, sorted by their clash magnitude.

Atom-1	Atom-2	Interatomic distance (Å)	Clash overlap (Å)
2:A:200:CM2:C50	2:A:200:CM2:C49	1.74	1.61
2:C:200:CM2:C50	2:C:200:CM2:C49	1.76	1.57
1:B:67:THR:HB	1:B:80:ILE:HG22	1.47	0.93
1:B:164:ASN:H	1:B:164:ASN:HD22	1.02	0.93
1:C:5:SER:HA	1:C:130:ARG:HH12	1.33	0.91
1:B:144:LEU:HD22	1:B:148:LEU:HD13	1.60	0.84
1:A:28:GLN:OE1	1:A:58:LEU:HB2	1.78	0.83
2:A:200:CM2:C50	2:A:200:CM2:C48	2.58	0.82
1:B:164:ASN:HD22	1:B:164:ASN:N	1.78	0.79
1:A:81:ARG:HD2	2:A:200:CM2:H502	1.67	0.77
1:C:72:ARG:HG2	1:C:73:LYS:HE3	1.66	0.75
1:A:4:THR:HG22	1:A:4:THR:O	1.86	0.75
2:C:200:CM2:C50	2:C:200:CM2:C48	2.68	0.72
1:C:81:ARG:HG3	2:C:200:CM2:H502	1.72	0.71

Continued on next page...

Continued from previous page...

Atom-1	Atom-2	Interatomic distance (Å)	Clash overlap (Å)
1:C:5:SER:HA	1:C:130:ARG:NH1	2.05	0.71
1:B:164:ASN:H	1:B:164:ASN:ND2	1.81	0.70
1:A:31:TRP:CZ3	1:A:140:ARG:HD2	2.28	0.68
1:C:43:ARG:HG2	1:C:167:VAL:HG12	1.76	0.68
1:A:70:LEU:HD11	2:A:200:CM2:H322	1.79	0.65
1:B:144:LEU:HD22	1:B:148:LEU:CD1	2.29	0.62
1:B:170:VAL:HG23	1:B:170:VAL:O	2.00	0.61
1:B:108:VAL:HG22	1:B:123:PHE:HD1	1.66	0.61
2:B:200:CM2:H331	2:B:200:CM2:H501	1.83	0.61
1:B:108:VAL:HG22	1:B:123:PHE:CD1	2.37	0.60
1:A:81:ARG:CD	2:A:200:CM2:H502	2.32	0.60
1:C:72:ARG:HG2	1:C:73:LYS:CE	2.32	0.59
1:A:4:THR:O	1:A:4:THR:CG2	2.50	0.59
1:A:140:ARG:HG2	1:C:23:GLN:NE2	2.19	0.57
1:B:52:TYR:HB2	1:B:70:LEU:HD22	1.87	0.57
1:B:26:GLN:HB2	1:B:115:TYR:CD1	2.40	0.57
1:B:42:LEU:HD23	1:B:164:ASN:O	2.04	0.57
1:C:70:LEU:HD11	2:C:200:CM2:H322	1.88	0.56
1:A:91:GLU:OE1	1:A:109:ARG:NH1	2.34	0.55
1:A:81:ARG:NE	2:A:200:CM2:H48	2.22	0.55
1:A:81:ARG:NE	1:A:100:TYR:HE2	2.05	0.55
1:B:61:ASP:OD1	1:B:63:SER:HB2	2.07	0.55
1:B:52:TYR:CB	1:B:70:LEU:HD22	2.37	0.54
1:B:12:PRO:HD2	1:B:15:LYS:HG3	1.88	0.54
1:B:124:LYS:HD2	1:B:131:GLU:OE1	2.06	0.54
1:B:31:TRP:CE3	1:B:138:TYR:HB3	2.44	0.53
1:B:88:GLN:HB2	1:B:91:GLU:OE2	2.10	0.52
1:A:10:ALA:HA	1:A:133:PHE:CD1	2.44	0.52
1:A:100:TYR:N	1:A:100:TYR:CD1	2.77	0.51
2:C:200:CM2:C51	2:C:200:CM2:C49	2.80	0.50
1:A:24:ASP:OD2	1:A:25:ASN:N	2.45	0.50
1:C:69:VAL:C	1:C:70:LEU:HD12	2.32	0.49
1:A:31:TRP:CH2	1:A:140:ARG:HD2	2.47	0.49
1:C:70:LEU:N	1:C:70:LEU:HD12	2.27	0.49
1:B:70:LEU:HD21	2:B:200:CM2:H322	1.93	0.49
1:A:135:ILE:N	1:A:135:ILE:HD12	2.28	0.49
1:A:30:LYS:HG2	1:A:31:TRP:N	2.26	0.49
1:A:116:ASN:C	1:A:116:ASN:HD22	2.17	0.47
1:A:80:ILE:O	1:A:81:ARG:HG3	2.14	0.47
1:B:61:ASP:O	1:B:62:LYS:HB2	2.15	0.47
1:B:16:VAL:HB	1:B:109:ARG:HH11	1.80	0.47

Continued on next page...

Continued from previous page...

Atom-1	Atom-2	Interatomic distance (Å)	Clash overlap (Å)
1:A:58:LEU:HD22	1:A:62:LYS:HA	1.97	0.46
1:B:81:ARG:CZ	2:B:200:CM2:H48	2.46	0.46
1:B:52:TYR:HB2	1:B:70:LEU:CD2	2.46	0.46
1:A:81:ARG:CZ	1:A:100:TYR:HE2	2.27	0.46
1:B:23:GLN:HB3	1:B:26:GLN:HG2	1.97	0.46
1:C:30:LYS:HB2	1:C:30:LYS:HE2	1.87	0.45
1:C:43:ARG:HD2	1:C:164:ASN:HA	2.00	0.44
1:C:31:TRP:CZ3	1:C:140:ARG:HD2	2.52	0.44
1:B:37:ALA:O	1:B:134:LYS:HA	2.18	0.44
1:B:92:PHE:HB2	1:B:108:VAL:HB	2.00	0.44
1:B:164:ASN:N	1:B:164:ASN:ND2	2.47	0.44
1:B:84:VAL:HA	1:B:85:PRO:HD3	1.81	0.44
1:B:100:TYR:HA	1:B:101:PRO:HD3	1.62	0.43
2:A:200:CM2:C51	2:A:200:CM2:C49	2.81	0.43
1:C:124:LYS:HE3	1:C:131:GLU:OE1	2.18	0.43
1:A:100:TYR:HA	1:A:101:PRO:HD3	1.74	0.43
1:B:134:LYS:C	1:B:135:ILE:HG13	2.37	0.43
1:C:162:PRO:HG2	1:C:165:HIS:HD2	1.84	0.43
1:B:174:GLN:OE1	1:B:174:GLN:N	2.51	0.42
1:C:34:VAL:HG22	1:C:137:LEU:HD13	2.01	0.42
1:C:72:ARG:CG	1:C:73:LYS:HE3	2.44	0.41
1:B:82:THR:HB	1:B:95:GLY:HA3	2.02	0.41
1:A:115:TYR:O	1:A:140:ARG:HD3	2.21	0.41
1:B:123:PHE:O	1:B:133:PHE:HA	2.21	0.40

There are no symmetry-related clashes.

5.3 Torsion angles [i](#)

5.3.1 Protein backbone [i](#)

In the following table, the Percentiles column shows the percent Ramachandran outliers of the chain as a percentile score with respect to all X-ray entries followed by that with respect to entries of similar resolution.

The Analysed column shows the number of residues for which the backbone conformation was analysed, and the total number of residues.

Mol	Chain	Analysed	Favoured	Allowed	Outliers	Percentiles
1	A	173/178 (97%)	164 (95%)	9 (5%)	0	100 100

Continued on next page...

Continued from previous page...

Mol	Chain	Analysed	Favoured	Allowed	Outliers	Percentiles	
1	B	165/178 (93%)	158 (96%)	7 (4%)	0	100	100
1	C	171/178 (96%)	167 (98%)	4 (2%)	0	100	100
All	All	509/534 (95%)	489 (96%)	20 (4%)	0	100	100

There are no Ramachandran outliers to report.

5.3.2 Protein sidechains ⓘ

In the following table, the Percentiles column shows the percent sidechain outliers of the chain as a percentile score with respect to all X-ray entries followed by that with respect to entries of similar resolution.

The Analysed column shows the number of residues for which the sidechain conformation was analysed, and the total number of residues.

Mol	Chain	Analysed	Rotameric	Outliers	Percentiles	
1	A	151/163 (93%)	142 (94%)	9 (6%)	24	26
1	B	144/163 (88%)	132 (92%)	12 (8%)	14	13
1	C	153/163 (94%)	144 (94%)	9 (6%)	24	27
All	All	448/489 (92%)	418 (93%)	30 (7%)	20	21

All (30) residues with a non-rotameric sidechain are listed below:

Mol	Chain	Res	Type
1	A	4	THR
1	A	34	VAL
1	A	70	LEU
1	A	73	LYS
1	A	100	TYR
1	A	109	ARG
1	A	116	ASN
1	A	128	GLN
1	A	140	ARG
1	B	13	LEU
1	B	36	LEU
1	B	58	LEU
1	B	63	SER
1	B	67	THR
1	B	70	LEU
1	B	79	TRP

Continued on next page...

Continued from previous page...

Mol	Chain	Res	Type
1	B	112	SER
1	B	137	LEU
1	B	140	ARG
1	B	146	SER
1	B	164	ASN
1	C	13	LEU
1	C	42	LEU
1	C	44	GLU
1	C	49	GLN
1	C	58	LEU
1	C	65	ASN
1	C	69	VAL
1	C	137	LEU
1	C	140	ARG

Some sidechains can be flipped to improve hydrogen bonding and reduce clashes. All (11) such sidechains are listed below:

Mol	Chain	Res	Type
1	A	26	GLN
1	A	65	ASN
1	A	116	ASN
1	A	128	GLN
1	B	20	GLN
1	B	164	ASN
1	C	26	GLN
1	C	49	GLN
1	C	65	ASN
1	C	116	ASN
1	C	165	HIS

5.3.3 RNA ⓘ

There are no RNA molecules in this entry.

5.4 Non-standard residues in protein, DNA, RNA chains ⓘ

There are no non-standard protein/DNA/RNA residues in this entry.

5.5 Carbohydrates ⓘ

There are no carbohydrates in this entry.

5.6 Ligand geometry ⓘ

3 ligands are modelled in this entry.

In the following table, the Counts columns list the number of bonds (or angles) for which Mogul statistics could be retrieved, the number of bonds (or angles) that are observed in the model and the number of bonds (or angles) that are defined in the chemical component dictionary. The Link column lists molecule types, if any, to which the group is linked. The Z score for a bond length (or angle) is the number of standard deviations the observed value is removed from the expected value. A bond length (or angle) with $|Z| > 2$ is considered an outlier worth inspection. RMSZ is the root-mean-square of all Z scores of the bond lengths (or angles).

Mol	Type	Chain	Res	Link	Bond lengths			Bond angles		
					Counts	RMSZ	# $ Z > 2$	Counts	RMSZ	# $ Z > 2$
2	CM2	A	200	-	44,58,58	2.88	22 (50%)	47,80,80	2.93	19 (40%)
2	CM2	B	200	-	44,58,58	2.87	20 (45%)	47,80,80	2.84	18 (38%)
2	CM2	C	200	-	44,58,58	2.84	20 (45%)	47,80,80	2.94	17 (36%)

In the following table, the Chirals column lists the number of chiral outliers, the number of chiral centers analysed, the number of these observed in the model and the number defined in the chemical component dictionary. Similar counts are reported in the Torsion and Rings columns. '-' means no outliers of that kind were identified.

Mol	Type	Chain	Res	Link	Chirals	Torsions	Rings
2	CM2	A	200	-	2/2/13/18	0/42/92/92	0/1/6/6
2	CM2	B	200	-	2/2/13/18	0/42/92/92	0/1/6/6
2	CM2	C	200	-	2/2/13/18	0/42/92/92	0/1/6/6

All (62) bond length outliers are listed below:

Mol	Chain	Res	Type	Atoms	Z	Observed(Å)	Ideal(Å)
2	C	200	CM2	C8-C10	-7.05	1.39	1.51
2	A	200	CM2	C8-C10	-5.58	1.42	1.51
2	B	200	CM2	C8-C10	-4.64	1.43	1.51
2	B	200	CM2	C52-C51	-3.99	1.28	1.51
2	A	200	CM2	C52-C51	-3.87	1.29	1.51
2	B	200	CM2	C25-C27	-3.67	1.44	1.51
2	B	200	CM2	C12-C15	-3.51	1.43	1.52
2	C	200	CM2	C52-C51	-3.29	1.32	1.51

Continued on next page...

Continued from previous page...

Mol	Chain	Res	Type	Atoms	Z	Observed(Å)	Ideal(Å)
2	A	200	CM2	C12-C15	-3.12	1.44	1.52
2	C	200	CM2	C25-C27	-3.00	1.45	1.51
2	C	200	CM2	C18-C19	-2.48	1.45	1.52
2	B	200	CM2	C18-C19	-2.36	1.46	1.52
2	A	200	CM2	C30-N29	2.02	1.50	1.45
2	A	200	CM2	O16-C15	2.07	1.27	1.23
2	C	200	CM2	C49-C48	2.24	1.60	1.50
2	C	200	CM2	C13-C12	2.24	1.59	1.54
2	A	200	CM2	C12-N11	2.29	1.52	1.46
2	A	200	CM2	O21-C22	2.32	1.52	1.45
2	A	200	CM2	C41-C42	2.44	1.62	1.51
2	C	200	CM2	C4-C3	2.47	1.44	1.39
2	A	200	CM2	O20-C19	2.56	1.27	1.21
2	C	200	CM2	C15-N17	2.60	1.40	1.34
2	B	200	CM2	C4-C3	2.67	1.45	1.39
2	C	200	CM2	O21-C22	2.70	1.53	1.45
2	B	200	CM2	O21-C19	2.87	1.39	1.33
2	C	200	CM2	C6-C5	2.97	1.45	1.38
2	B	200	CM2	C12-N11	3.04	1.53	1.46
2	A	200	CM2	O21-C19	3.11	1.39	1.33
2	B	200	CM2	O16-C15	3.18	1.29	1.23
2	C	200	CM2	C39-C18	3.21	1.60	1.53
2	A	200	CM2	C4-C3	3.32	1.46	1.39
2	B	200	CM2	C39-C18	3.49	1.61	1.53
2	B	200	CM2	C7-C8	3.50	1.44	1.39
2	A	200	CM2	C45-C47	3.56	1.56	1.49
2	A	200	CM2	C39-C18	3.61	1.61	1.53
2	C	200	CM2	C6-C7	3.64	1.46	1.38
2	C	200	CM2	C33-C32	3.70	1.67	1.51
2	B	200	CM2	C33-C32	3.75	1.67	1.51
2	B	200	CM2	C45-C47	3.84	1.56	1.49
2	A	200	CM2	C7-C8	3.85	1.45	1.39
2	C	200	CM2	O21-C19	3.91	1.41	1.33
2	A	200	CM2	C6-C5	3.96	1.48	1.38
2	C	200	CM2	C45-C47	3.96	1.57	1.49
2	A	200	CM2	C33-C32	3.98	1.68	1.51
2	B	200	CM2	C6-C5	4.06	1.48	1.38
2	C	200	CM2	C27-N29	4.06	1.42	1.34
2	B	200	CM2	C6-C7	4.14	1.47	1.38
2	A	200	CM2	O14-C13	4.43	1.54	1.43
2	A	200	CM2	C6-C7	4.51	1.48	1.38
2	C	200	CM2	O14-C13	4.74	1.54	1.43

Continued on next page...

Continued from previous page...

Mol	Chain	Res	Type	Atoms	Z	Observed(Å)	Ideal(Å)
2	B	200	CM2	C50-C49	4.77	1.70	1.52
2	A	200	CM2	C3-C8	4.96	1.50	1.39
2	B	200	CM2	C3-C8	5.07	1.50	1.39
2	C	200	CM2	C3-C8	5.16	1.50	1.39
2	A	200	CM2	O38-C37	5.17	1.31	1.22
2	B	200	CM2	O14-C13	5.44	1.56	1.43
2	B	200	CM2	O38-C37	5.62	1.32	1.22
2	A	200	CM2	C27-N29	5.65	1.45	1.34
2	B	200	CM2	C27-N29	5.67	1.45	1.34
2	A	200	CM2	C50-C49	5.77	1.74	1.52
2	C	200	CM2	O38-C37	6.06	1.33	1.22
2	C	200	CM2	C50-C49	6.18	1.76	1.52

All (54) bond angle outliers are listed below:

Mol	Chain	Res	Type	Atoms	Z	Observed(°)	Ideal(°)
2	C	200	CM2	O28-C27-N29	-5.67	113.40	123.01
2	A	200	CM2	O28-C27-N29	-5.29	114.03	123.01
2	C	200	CM2	O21-C19-O20	-4.55	114.78	124.05
2	A	200	CM2	O21-C19-O20	-4.50	114.87	124.05
2	B	200	CM2	O21-C19-O20	-4.43	115.01	124.05
2	B	200	CM2	O28-C27-N29	-3.88	116.42	123.01
2	A	200	CM2	C13-C12-C15	-3.18	105.84	112.71
2	B	200	CM2	C6-C7-C8	-3.03	117.08	121.02
2	B	200	CM2	C13-C12-C15	-2.92	106.40	112.71
2	C	200	CM2	C13-C12-C15	-2.81	106.64	112.71
2	C	200	CM2	O16-C15-N17	-2.77	117.51	122.93
2	A	200	CM2	C6-C7-C8	-2.56	117.69	121.02
2	B	200	CM2	O16-C15-N17	-2.55	117.94	122.93
2	A	200	CM2	O16-C15-N17	-2.32	118.37	122.93
2	B	200	CM2	C22-O21-C19	2.18	121.47	116.59
2	C	200	CM2	C18-N17-C15	2.22	126.61	121.62
2	A	200	CM2	C18-N17-C15	2.27	126.70	121.62
2	C	200	CM2	C22-O21-C19	2.28	121.70	116.59
2	A	200	CM2	C7-C8-C3	2.31	120.49	117.76
2	C	200	CM2	C7-C8-C3	2.36	120.55	117.76
2	A	200	CM2	C7-C8-C10	2.58	123.54	120.13
2	B	200	CM2	C30-C37-N35	2.59	120.12	116.09
2	B	200	CM2	C7-C8-C10	2.60	123.56	120.13
2	B	200	CM2	C7-C8-C3	2.67	120.91	117.76
2	B	200	CM2	C52-C51-C50	2.93	129.66	114.53
2	A	200	CM2	C22-O21-C19	3.01	123.34	116.59

Continued on next page...

Continued from previous page...

Mol	Chain	Res	Type	Atoms	Z	Observed(°)	Ideal(°)
2	A	200	CM2	C52-C51-C50	3.10	130.52	114.53
2	A	200	CM2	O2-C3-C8	3.11	123.19	120.19
2	C	200	CM2	C30-C37-N35	3.16	121.00	116.09
2	A	200	CM2	O21-C19-C18	3.35	120.10	111.71
2	C	200	CM2	C52-C51-C50	3.37	131.92	114.53
2	A	200	CM2	C30-C37-N35	3.40	121.39	116.09
2	B	200	CM2	O21-C19-C18	3.51	120.50	111.71
2	B	200	CM2	C12-C15-N17	3.56	124.99	116.78
2	A	200	CM2	C12-C15-N17	3.68	125.27	116.78
2	B	200	CM2	O2-C3-C8	3.68	123.73	120.19
2	C	200	CM2	C12-C15-N17	3.78	125.50	116.78
2	C	200	CM2	O2-C3-C8	3.81	123.85	120.19
2	A	200	CM2	O28-C27-C25	4.08	129.01	121.98
2	B	200	CM2	O28-C27-C25	4.10	129.05	121.98
2	C	200	CM2	O21-C19-C18	4.15	122.12	111.71
2	C	200	CM2	C53-C54-C55	4.29	135.71	112.58
2	C	200	CM2	C49-C48-C47	4.74	139.38	125.14
2	A	200	CM2	C53-C54-C55	5.01	139.60	112.58
2	B	200	CM2	C53-C54-C55	5.11	140.12	112.58
2	A	200	CM2	C49-C48-C47	5.20	140.75	125.14
2	B	200	CM2	C49-C48-C47	5.28	141.00	125.14
2	C	200	CM2	O28-C27-C25	5.33	131.17	121.98
2	A	200	CM2	C53-C52-C51	5.60	143.44	114.53
2	B	200	CM2	C53-C52-C51	5.82	144.56	114.53
2	C	200	CM2	C53-C52-C51	6.07	145.85	114.53
2	B	200	CM2	C52-C53-C54	10.85	159.76	113.90
2	C	200	CM2	C52-C53-C54	11.19	161.17	113.90
2	A	200	CM2	C52-C53-C54	11.28	161.59	113.90

All (6) chirality outliers are listed below:

Mol	Chain	Res	Type	Atom
2	C	200	CM2	C10
2	C	200	CM2	C45
2	A	200	CM2	C10
2	A	200	CM2	C45
2	B	200	CM2	C10
2	B	200	CM2	C45

There are no torsion outliers.

There are no ring outliers.

3 monomers are involved in 15 short contacts:

Mol	Chain	Res	Type	Clashes	Symm-Clashes
2	A	200	CM2	7	0
2	B	200	CM2	3	0
2	C	200	CM2	5	0

5.7 Other polymers [i](#)

There are no such residues in this entry.

5.8 Polymer linkage issues [i](#)

There are no chain breaks in this entry.

6 Fit of model and data [i](#)

6.1 Protein, DNA and RNA chains [i](#)

EDS was not executed - this section will therefore be empty.

6.2 Non-standard residues in protein, DNA, RNA chains [i](#)

EDS was not executed - this section will therefore be empty.

6.3 Carbohydrates [i](#)

EDS was not executed - this section will therefore be empty.

6.4 Ligands [i](#)

EDS was not executed - this section will therefore be empty.

6.5 Other polymers [i](#)

EDS was not executed - this section will therefore be empty.